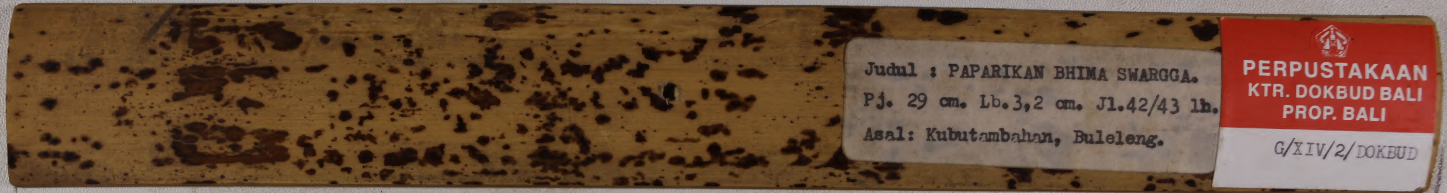


**PAPARIKAN BHIMA SWARGGA**

*Pusat Dokumentasi  
Dinas Kebudayaan Provinsi Bali*



Judul : PAPARIKAN BHIMA SWARGGA.  
Pj. 29 cm. Lb. 3,2 cm. Jl. 42/43 lb.  
Asal: Kubutambahan, Buleleng.

  
**PERPUSTAKAAN  
KTR. DOKBUD BALI  
PROP. BALI**

G/XIV/2/DOKBUD



7

1

A

பிமாவர்ஜா

பிமாவர்ஜா  
6/XIV/2



PAPARIKAN BHIMA SWARGGA

Pusat Dokumentasi

Dinas Kebudayaan Provinsi Bali

3	1
	B

Handwritten text on a palm leaf manuscript strip, featuring three circular holes for binding. The text is written in Balinese script.

3	2
	A

Handwritten text on a palm leaf manuscript strip, featuring three circular holes for binding. The text is written in Balinese script.



PAPARIKAN BHIMA SWARGGA

Pusat Dokumentasi

Dinas Kebudayaan Provinsi Bali

2  
B

Handwritten Balinese script on a palm leaf manuscript strip, featuring two columns of text.

3  
A

Handwritten Balinese script on a palm leaf manuscript strip, featuring two columns of text.



PAPARIKAN BHIMA SWARGGA

Pusat Dokumentasi

Dinas Kebudayaan Provinsi Bali

3  
B

Handwritten text on a palm leaf manuscript strip, likely in Balinese script. The text is arranged in two columns and contains several lines of characters.

4  
A

Handwritten text on a palm leaf manuscript strip, likely in Balinese script. The text is arranged in two columns and contains several lines of characters.



PAPARIKAN BHIMA SWARGGA

Pusat Dokumentasi

Dinas Kebudayaan Provinsi Bali

3 4 B

Handwritten text in Balinese script on a palm leaf manuscript strip. The text is arranged in two columns. On the left side of the strip, there is a small handwritten mark that appears to be "3".

4 5 A

Handwritten text in Balinese script on a palm leaf manuscript strip. The text is arranged in two columns. On the left side of the strip, there is a small handwritten mark that appears to be "4".



PAPARIKAN BHIMA SWARGGA

Pusat Dokumentasi

Dinas Kebudayaan Provinsi Bali

9	5 B
---	--------

Handwritten text on a palm leaf manuscript, likely in Balinese script. The text is arranged in two columns. The left column begins with a small symbol resembling a '9' or a similar character. The right column contains several lines of text, including a prominent '9' at the beginning of the first line.

6 A
--------

Handwritten text on a palm leaf manuscript, likely in Balinese script. The text is arranged in two columns. The left column begins with a small symbol resembling a '6' or a similar character. The right column contains several lines of text, including a prominent '9' at the beginning of the first line.



PAPARIKAN BHIMA SWARGGA

Pusat Dokumentasi

Dinas Kebudayaan Provinsi Bali

6  
B

Handwritten Balinese script on a palm leaf manuscript strip, featuring two columns of text.

7  
A

Handwritten Balinese script on a palm leaf manuscript strip, featuring two columns of text.



PAPARIKAN BHIMA SWARGGA

Pusat Dokumentasi

Dinas Kebudayaan Provinsi Bali

3 7 B

Handwritten text in Balinese script on a palm leaf manuscript strip. The text is arranged in two columns. The left column begins with a small mark resembling a '3' or '7' in the left margin. The script is finely etched into the surface of the dried leaf.

5 8 A

Handwritten text in Balinese script on a palm leaf manuscript strip. The text is arranged in two columns. The left column begins with a small mark resembling a '5' or '8' in the left margin. The script is finely etched into the surface of the dried leaf.



PAPARIKAN BHIMA SWARGGA

Pusat Dokumentasi

Dinas Kebudayaan Provinsi Bali

8	B
---	---

Handwritten text on a palm leaf manuscript strip, likely in Balinese script. The text is arranged in two columns. The left column begins with a small symbol resembling a '3' or '5'.

9	A
---	---

Handwritten text on a palm leaf manuscript strip, likely in Balinese script. The text is arranged in two columns.



PAPARIKAN BHIMA SWARGGA

Pusat Dokumentasi

Dinas Kebudayaan Provinsi Bali

3 9 B

Handwritten text in Balinese script on a palm leaf manuscript strip. The text is arranged in two columns, with a small hole visible on the right side of the strip.

10 A

Handwritten text in Balinese script on a palm leaf manuscript strip. The text is arranged in two columns, with a small hole visible on the right side of the strip.



PAPARIKAN BHIMA SWARGGA

Pusat Dokumentasi

Dinas Kebudayaan Provinsi Bali

no	10	10	B	Handwritten Balinese script on a palm leaf manuscript strip.
	B			

no	11	11	A	Handwritten Balinese script on a palm leaf manuscript strip.
	A			



PAPARIKAN BHIMA SWARGGA

Pusat Dokumentasi

Dinas Kebudayaan Provinsi Bali

11  
B

Handwritten Balinese script on a palm leaf manuscript strip, divided into two columns by a central hole. The text is written in a traditional script.

12  
A

Handwritten Balinese script on a palm leaf manuscript strip, divided into two columns by a central hole. The text is written in a traditional script.



PAPARIKAN BHIMA SWARGGA

Pusat Dokumentasi

Dinas Kebudayaan Provinsi Bali

12  
B

Handwritten Balinese script on a palm leaf, consisting of two columns of text. The script is finely etched into the surface of the leaf. There are two circular holes visible on the leaf, one on each side of the text columns.

13  
A

Handwritten Balinese script on a palm leaf, consisting of two columns of text. The script is finely etched into the surface of the leaf. There are two circular holes visible on the leaf, one on each side of the text columns.



PAPARIKAN BHIMA SWARGGA

Pusat Dokumentasi

Dinas Kebudayaan Provinsi Bali

13  
B

Handwritten text on a palm leaf manuscript strip, likely in Balinese script. The text is arranged in two columns. The left column begins with a small symbol resembling a stylized '3' or '9'. The script is finely etched into the surface of the dried leaf.

14  
A

Handwritten text on a palm leaf manuscript strip, likely in Balinese script. The text is arranged in two columns. The left column begins with a small symbol resembling a stylized '7' or '8'. The script is finely etched into the surface of the dried leaf.



PAPARIKAN BHIMA SWARGGA

Pusat Dokumentasi

Dinas Kebudayaan Provinsi Bali

178  
14  
B

Handwritten Balinese script on a palm leaf manuscript strip, likely containing a portion of the 'Paparikan Bhima Swargga' text.

179  
15  
A

Handwritten Balinese script on a palm leaf manuscript strip, likely containing another portion of the 'Paparikan Bhima Swargga' text.



PAPARIKAN BHIMA SWARGGA

Pusat Dokumentasi

Dinas Kebudayaan Provinsi Bali

15  
B

Handwritten text on a palm leaf manuscript strip, likely in Balinese script. The text is arranged in two columns. The left column begins with a small symbol resembling a stylized '15' or a similar character. The script is finely etched into the surface of the dried leaf.

16  
A

Handwritten text on a palm leaf manuscript strip, likely in Balinese script. The text is arranged in two columns. The left column begins with a small symbol resembling a stylized '16' or a similar character. The script is finely etched into the surface of the dried leaf.



PAPARIKAN BHIMA SWARGGA

Pusat Dokumentasi

Dinas Kebudayaan Provinsi Bali

172

16

B

Handwritten Balinese script on a palm leaf manuscript fragment. The text is arranged in approximately 10 horizontal lines across the length of the leaf. Two circular holes are visible, used for binding multiple leaves together.

173

17

A

Handwritten Balinese script on a palm leaf manuscript fragment. The text is arranged in approximately 10 horizontal lines across the length of the leaf. Two circular holes are visible, used for binding multiple leaves together.



PAPARIKAN BHIMA SWARGGA

Pusat Dokumentasi

Dinas Kebudayaan Provinsi Bali

17	B

Handwritten text on a palm leaf manuscript, likely in Balinese script. The text is arranged in two columns. The left column begins with a small symbol resembling a crescent moon and a star. The right column contains several lines of text, including a prominent numeral '0' at the beginning of the second line.

18	A

Handwritten text on a palm leaf manuscript, likely in Balinese script. The text is arranged in two columns. The left column begins with a small symbol resembling a crescent moon and a star. The right column contains several lines of text, including a prominent numeral '0' at the beginning of the second line.



PAPARIKAN BHIMA SWARGGA

Pusat Dokumentasi

Dinas Kebudayaan Provinsi Bali

18

B

B

Handwritten Balinese script on a palm leaf manuscript strip, featuring two columns of text.

19

A

A

Handwritten Balinese script on a palm leaf manuscript strip, featuring two columns of text.



PAPARIKAN BHIMA SWARGGA

Pusat Dokumentasi

Dinas Kebudayaan Provinsi Bali

19  
B

Handwritten text on a palm leaf manuscript, likely in Balinese script. The text is arranged in two columns. The left column begins with a small symbol resembling a stylized '3' or a similar character, followed by several lines of text. The right column also contains several lines of text. The script is finely etched into the surface of the dried palm leaf.

20  
A

Handwritten text on a palm leaf manuscript, likely in Balinese script. The text is arranged in two columns. The left column begins with a small symbol resembling a stylized '3' or a similar character, followed by several lines of text. The right column also contains several lines of text. The script is finely etched into the surface of the dried palm leaf.



PAPARIKAN BHIMA SWARGGA

Pusat Dokumentasi

Dinas Kebudayaan Provinsi Bali

20  
B

Handwritten text on a palm leaf manuscript strip, likely in Balinese script. The text is arranged in two columns. The left column begins with the number '20' and the letter 'B'. The script is finely etched into the natural texture of the dried leaf.

21  
A

Handwritten text on a palm leaf manuscript strip, likely in Balinese script. The text is arranged in two columns. The left column begins with the number '21' and the letter 'A'. The script is finely etched into the natural texture of the dried leaf.



PAPARIKAN BHIMA SWARGGA

Pusat Dokumentasi

Dinas Kebudayaan Provinsi Bali

21  
B

Handwritten Balinese script on a palm leaf manuscript strip, featuring two columns of text.

22  
A

Handwritten Balinese script on a palm leaf manuscript strip, featuring two columns of text.



PAPARIKAN BHIMA SWARGGA

Pusat Dokumentasi

Dinas Kebudayaan Provinsi Bali

22

22

B

22

Handwritten Balinese script on a palm leaf manuscript strip, consisting of two columns of text.

23

23

A

Handwritten Balinese script on a palm leaf manuscript strip, consisting of two columns of text.



PAPARIKAN BHIMA SWARGGA

Pusat Dokumentasi

Dinas Kebudayaan Provinsi Bali

23

Handwritten text on a palm leaf manuscript strip, likely in Balinese script. The text is arranged in two columns. The left column begins with a small symbol resembling a stylized '23' or a similar character, followed by several lines of text. The right column also contains multiple lines of text. The script is finely etched into the natural texture of the palm leaf.

24

Handwritten text on a palm leaf manuscript strip, continuing the Balinese script. The text is arranged in two columns. The left column starts with a small symbol, followed by several lines of text. The right column also contains multiple lines of text. The script is finely etched into the natural texture of the palm leaf.



PAPARIKAN BHIMA SWARGGA

Pusat Dokumentasi

Dinas Kebudayaan Provinsi Bali

24
B

Handwritten Balinese script on a palm leaf manuscript. The text is arranged in two columns. On the left side of the leaf, there is a handwritten number "24" and a small circular hole. The script is finely etched into the surface of the dried leaf.

25
A

Handwritten Balinese script on a palm leaf manuscript. The text is arranged in two columns. On the left side of the leaf, there is a handwritten number "25" and a small circular hole. The script is finely etched into the surface of the dried leaf.



PAPARIKAN BHIMA SWARGGA

Pusat Dokumentasi

Dinas Kebudayaan Provinsi Bali

25  
B

Handwritten text in Balinese script on a palm leaf, with a small tag on the left containing the number 25 and the letter B.

26  
A

Handwritten text in Balinese script on a palm leaf, with a small tag on the left containing the number 26 and the letter A.



PAPARIKAN BHIMA SWARGGA

Pusat Dokumentasi

Dinas Kebudayaan Provinsi Bali

26

B

Handwritten Balinese script on a palm leaf manuscript strip, organized into two columns. The text is written in a traditional style with dark ink on the natural brown color of the leaf. There are two circular holes visible on the strip, used for binding multiple leaves together.

27

A

Handwritten Balinese script on a palm leaf manuscript strip, organized into two columns. The text is written in a traditional style with dark ink on the natural brown color of the leaf. There are two circular holes visible on the strip, used for binding multiple leaves together.



PAPARIKAN BHIMA SWARGGA

Pusat Dokumentasi

Dinas Kebudayaan Provinsi Bali

27  
B

Handwritten text on a palm leaf manuscript strip, likely in Balinese script. The text is arranged in two columns. On the left side of the strip, there is a small handwritten mark that appears to be '27B'.

28  
A

Handwritten text on a palm leaf manuscript strip, likely in Balinese script. The text is arranged in two columns. On the left side of the strip, there is a small handwritten mark that appears to be '28A'.



PAPARIKAN BHIMA SWARGGA

Pusat Dokumentasi

Dinas Kebudayaan Provinsi Bali

28  
B

Handwritten text in Balinese script on a palm leaf manuscript strip.

29  
A

Handwritten text in Balinese script on a palm leaf manuscript strip.



PAPARIKAN BHIMA SWARGGA

Pusat Dokumentasi

Dinas Kebudayaan Provinsi Bali

29	B

Handwritten Balinese script on a palm leaf manuscript strip, divided into two columns by a central hole. The text is written in a traditional script.

30	A

Handwritten Balinese script on a palm leaf manuscript strip, divided into two columns by a central hole. The text is written in a traditional script.



PAPARIKAN BHIMA SWARGGA

Pusat Dokumentasi

Dinas Kebudayaan Provinsi Bali

၃၀	30
	B

Handwritten text on a palm leaf manuscript strip, likely in Balinese script. The text is arranged in several lines across the length of the leaf.

၃၁	31
	A

Handwritten text on a palm leaf manuscript strip, likely in Balinese script. The text is arranged in several lines across the length of the leaf.



PAPARIKAN BHIMA SWARGGA

Pusat Dokumentasi

Dinas Kebudayaan Provinsi Bali

31	31
	B

Handwritten text on a palm leaf manuscript strip, likely in Balinese script. The text is arranged in two columns. The left column begins with the characters '31 B' and the right column begins with '31 B'. The script is finely etched into the surface of the dried leaf.

32	32
	A

Handwritten text on a palm leaf manuscript strip, likely in Balinese script. The text is arranged in two columns. The left column begins with the characters '32 A' and the right column begins with '32 A'. The script is finely etched into the surface of the dried leaf.



**PAPARIKAN BHIMA SWARGGA**  
*Pusat Dokumentasi*  
*Dinas Kebudayaan Provinsi Bali*

32	32
	B

...  
 ...  
 ...

33	33
	A

...  
 ...  
 ...



PAPARIKAN BHIMA SWARGGA

Pusat Dokumentasi

Dinas Kebudayaan Provinsi Bali

33

33

B

Handwritten Balinese script on a palm leaf manuscript strip, featuring two columns of text.

34

34

A

Handwritten Balinese script on a palm leaf manuscript strip, featuring two columns of text.



PAPARIKAN BHIMA SWARGGA

Pusat Dokumentasi

Dinas Kebudayaan Provinsi Bali

34	34
	B

Handwritten Balinese script on palm leaf. The script is arranged in two columns. On the left side of the leaf, there is a small handwritten number "34". There are two circular holes punched through the leaf for binding.

35	35
	A

Handwritten Balinese script on palm leaf. The script is arranged in two columns. There are two circular holes punched through the leaf for binding.



PAPARIKAN BHIMA SWARGGA

Pusat Dokumentasi

Dinas Kebudayaan Provinsi Bali

35

35

B

Handwritten Balinese script on a palm leaf manuscript strip, likely containing a portion of the 'Paparikan Bhima Swargga' text. The script is arranged in two columns, with a small circular hole on the left side for binding.

36

36

A

Handwritten Balinese script on a palm leaf manuscript strip, likely containing a portion of the 'Paparikan Bhima Swargga' text. The script is arranged in two columns, with a small circular hole on the left side for binding.



**PAPARIKAN BHIMA SWARGGA**

*Pusat Dokumentasi*

*Dinas Kebudayaan Provinsi Bali*

36  
B

Handwritten text on a palm leaf manuscript, likely containing a portion of the story of Bhima Swargga. The script is an Indic script, possibly Balinese or Old Javanese.

37  
A

Handwritten text on a palm leaf manuscript, continuing the story of Bhima Swargga. The script is an Indic script, possibly Balinese or Old Javanese.



PAPARIKAN BHIMA SWARGGA

Pusat Dokumentasi

Dinas Kebudayaan Provinsi Bali

37  
B

Handwritten text on a palm leaf manuscript strip, likely in Balinese script. The text is arranged in two columns and includes several lines of characters.

38  
A

Handwritten text on a palm leaf manuscript strip, likely in Balinese script. The text is arranged in two columns and includes several lines of characters.



PAPARIKAN BHIMA SWARGGA

Pusat Dokumentasi

Dinas Kebudayaan Provinsi Bali

38

38

B

Handwritten Balinese script on a palm leaf, consisting of two columns of text. The script is finely etched and arranged in approximately 12 horizontal lines across the length of the leaf. There are two circular holes on the leaf, one near the left end and one near the right end.

39

39

A

Handwritten Balinese script on a palm leaf, consisting of two columns of text. The script is finely etched and arranged in approximately 12 horizontal lines across the length of the leaf. There are two circular holes on the leaf, one near the left end and one near the right end.



PAPARIKAN BHIMA SWARGGA

Pusat Dokumentasi

Dinas Kebudayaan Provinsi Bali

39	39
	B

Handwritten text on a palm leaf manuscript, likely in Balinese script. The text is arranged in approximately 10 horizontal lines across the length of the leaf. There are two circular holes visible on the leaf, used for binding.

40	40
	A

Handwritten text on a palm leaf manuscript, likely in Balinese script. The text is arranged in approximately 10 horizontal lines across the length of the leaf. There are two circular holes visible on the leaf, used for binding.



PAPARIKAN BHIMA SWARGGA

Pusat Dokumentasi

Dinas Kebudayaan Provinsi Bali

80	40
	B

Handwritten text on a palm leaf manuscript strip, likely in Balinese script. The text is arranged in two columns. The left column begins with a small symbol resembling a stylized '3' or '9' followed by a vertical line. The right column begins with a small symbol resembling a '0' or '1' followed by a vertical line. The script is finely etched into the surface of the dried leaf.

81	41
	A

Handwritten text on a palm leaf manuscript strip, likely in Balinese script. The text is arranged in two columns. The left column begins with a small symbol resembling a '2' or '3' followed by a vertical line. The right column begins with a small symbol resembling a '0' or '1' followed by a vertical line. The script is finely etched into the surface of the dried leaf.



PAPARIKAN BHIMA SWARGGA

Pusat Dokumentasi

Dinas Kebudayaan Provinsi Bali

ꦱꦫꦒ	41
	B

Handwritten Balinese script on a palm leaf, consisting of two columns of text. The script is finely etched and runs horizontally across the length of the leaf. There are two circular holes visible on the leaf, one near each end, used for binding.

ꦱꦫꦒ	42
	A

Handwritten Balinese script on a palm leaf, consisting of two columns of text. The script is finely etched and runs horizontally across the length of the leaf. There are two circular holes visible on the leaf, one near each end, used for binding.



PAPARIKAN BHIMA SWARGGA

Pusat Dokumentasi

Dinas Kebudayaan Provinsi Bali

42
B

Handwritten text on a palm leaf manuscript, likely in Balinese script. The text is arranged in two columns, with a small red mark at the top left. The script is finely etched into the surface of the leaf.

43
A

Handwritten text on a palm leaf manuscript, likely in Balinese script. The text is arranged in two columns, with a small red mark at the top left. The script is finely etched into the surface of the leaf.



PAPARIKAN BHIMA SWARGGA

Pusat Dokumentasi

Dinas Kebudayaan Provinsi Bali

ꦱꦶ	43
	B

Handwritten Balinese script on a palm leaf manuscript strip. The text is arranged in approximately 10 horizontal lines across the length of the leaf. There are three circular holes punched along the top edge of the leaf, used for binding.

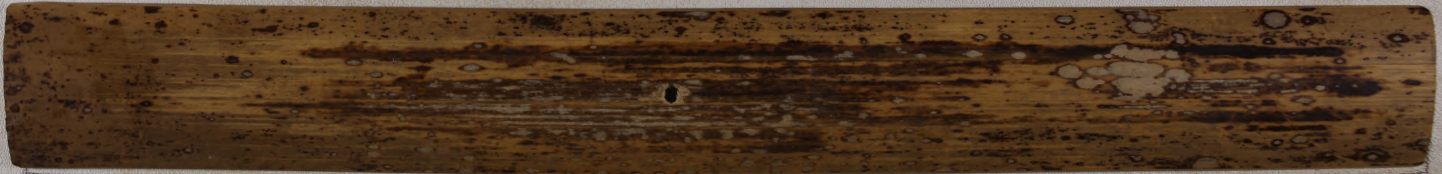
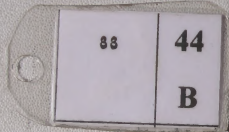
88	44
	A

Handwritten Balinese script on a palm leaf manuscript strip. The text is arranged in approximately 10 horizontal lines across the length of the leaf. There are three circular holes punched along the top edge of the leaf, used for binding.



**PAPARIKAN BHIMA SWARGGA**

*Pusat Dokumentasi  
Dinas Kebudayaan Provinsi Bali*





**PAPARIKAN BHIMA SWARGGA**

*Pusat Dokumentasi  
Dinas Kebudayaan Provinsi Bali*

