

Historic, Archive Document

Do not assume content reflects current scientific knowledge, policies, or practices.



BRAND'S PEONIES
IRISES OWN-ROOT LILACS
AND OTHER ORNAMENTALS —
FALL OF 1932

Three Unusual Collections

TO GIVE YOU

A Whole Season of Peony Pleasure

Early Flowering Collection

If you wish four excellent peonies to brighten your garden early in the season, we suggest:

Richard Carvel The best early red on the market. Wonderfully fragrant. Strong, upright grower. Very free bloomer.

Mons. Jules Elie One of the world's 26 best peonies. Fragrant. A wonderful lilac pink.

Mme. De Verneville A splendid early white; parallel in form, type and beauty to Richard Carvel and Mons. Jules Elie.

Edulis Superba A deeper pink than Mons. Jules Elie, known as the Decoration Day pink. Noted for its wonderful fragrance.

All four varieties will be in bloom at the same time, but Richard Carvel will appear first.

Regular Price—\$4.50

Collection Price

\$3.50

Late Flowering Collection

Marie Lemoine A beautiful creamy white. Probably the most fragrant of all peonies. Very late.

Grandiflora Soft shell-pink. When you think the peony season is over, you can still cut beautiful large blooms from Grandiflora.

Eugene Bigot This peony must be in your garden if you wish a very late good red. Unlike most reds, it has a delightful fragrance. A desirable cut flower with stiff, straight stems.

Claire Dubois (Crousse) Pink. Among hundreds of varieties, you occasionally find one peony which, for all-around good qualities, excels all others. Such is Claire Dubois. Immense globular form. Long incurved petals—a uniform shade of clear violet rose, tipped silvery white. A late flower otherwise comparable to the early variety, Mons. Jules Elie. Excellent cut flower.

Regular Price—\$4.00

Collection Price

\$3.00

Midseason Flowering Collection

Three from this list rate 9.0 and belong in the world's 26 best.

Sarah Bernhardt A prize-winning peony in every show room. Equally superb as a garden variety. Deep pink, tipped silver. Unusually large; delightfully fragrant.

Georgiana Shaylor Pink. We have always held that this is Mr. Shaylor's greatest flower, and we still do. If he had never produced another variety, this one alone would immortalize his name among peony lovers.

Mary Brand No red peony ever won favor so quickly. Always found among the winning reds in every show room. Comes into bloom with Frances Willard. Color so distinct, it is easily recognized by amateurs, no matter how often they see it in our fields. A red in which there is little trace of purple. One of the most satisfactory reds as a cut flower—it will last a week and hold right up stiff, if cut in the bud.

Baroness Schroeder Classed as a white but opens blush pink, fading to white. Considered one of Kelway's best productions. In the last symposium it continued to rate 9.0 after seventy-nine people had voted.

Regular Price—\$5.00

Collection Price

\$4.00

All 12 of the Above Peonies

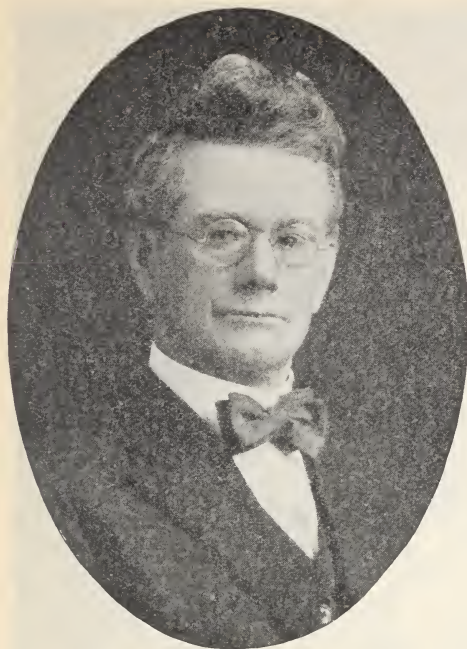
A TOTAL CATALOG VALUE OF \$13.50

Buy Them NOW As a Special Collection

A Bargain Price for
12 Beautiful Peonies

\$10.00

Do Not Take a Discount
on Any Collections



Mr. A. M. Brand

New Achievements in Prize-Winning Flowers

This book was purposely delayed in going to press until after the 29th Annual Exhibition of the American Peony Society, held at Des Moines on June 10th and 12th; also the Northwest Peony and Iris Show, held at St. Paul on June 15th and 16th.

The Brand Peony Farms entered at both exhibits.

We anticipated that these two events would evolve some thrilling news for our readers, customers, and friends. To say that the outcome was much as we expected would be far from accurate. Our entries not only attained but even far surpassed all the things we had hoped to achieve in these two momentous exhibitions of national import.

News From the Shows

At the national show in Des Moines, the Brand Peony Farms won the American Home Achievement Medal for the best new peony, the James Boyd Memorial Medal offered by the Pennsylvania Horticultural Society for the most distinguished entry in the show, five FIRST AWARDS and four SECOND AWARDS in the various classes open to national competition.

At St. Paul the Brand Peony Farms fared equally well or better, winning six FIRST AWARDS and two SECOND AWARDS in the Northwest Peony and Iris Show.

The prize-winning entries of many other exhibitors included so many of Brand's new peonies that we were pleased to see them honored instead of ourselves.

At the Des Moines show our new seedling No. 73 won the Achievement Medal as well as a first class certificate. While the entire Brand exhibit won the James Boyd Memorial Medal, we prefer to think, as others do, that our new Japanese peony, "Prairie Afire," was the crowning feature of our whole exhibit. Prairie Afire, according to the June 16th issue of the Florists' Review, was one of the most talked-of peonies in the show.

At Des Moines we placed first with three blooms each of twenty named varieties, in which we specially featured Martha Bulloch, Frances Willard, Mrs. A. M. Brand and Longfellow. We also placed first with three blooms each of ten named varieties in which we featured Victory Chateau Thierry and Frances Willard. The entry winning second award in this class likewise included many of Brand's new peonies, such as Myrtle Gentry, Phoebe Cary and Henry Avery.

In classes calling for three blooms of one variety, we placed first in the whites, second in the pinks with Victory Chateau Thierry, and third in the reds with Longfellow. We also placed first for a collection of ten or more Japanese varieties in which we specially featured our new creation, "Prairie Afire." We likewise placed first for a collection of ten or more single Chinese varieties, and even in this exhibit Brand's new peonies included Mellen Knight, Edith West and Krinkled White. The entry winning second place in this class featured one of Brand's new peonies—Flanders' Fields.

Brand's originations were heavily represented in the gold medal collection of 100 named varieties, won by Mr. W. G. DuMont of Des Moines. In this prize-winning entry,

Brand's new peonies included Mrs. John Kleitsch, Myrtle Gentry, Mrs. Harriet Gentry, Phoebe Cary, Martha Bulloch and Mrs. A. M. Brand.

In the color classes, the prize-winning entries again included many of Brand's new peonies. In the dark pinks, for instance, Martha Bulloch won first. In the reds, Richard Carvel won first, Longfellow second, and Benjamin Franklin third. In other words, all three awards in the reds were won by Brand's originations.

In a class calling for one bloom each of forty varieties, Mr. DuMont won first with an entry including such of Brand's new peonies as Mrs. A. M. Brand, Myrtle Gentry, Mrs. Frank Beach, Mrs. Harriet Gentry, and Mrs. John Kleitsch.

At St. Paul we placed first with one bloom each of 100 named varieties which, according to Florists' Review, was "a superb collection of well high perfect blooms." We also placed first with ten blooms of one variety of dark pink . . . first with six blooms of named double varieties in separate colors . . . first in the class calling for one bloom of light pink . . . first in the class calling for one bloom of dark pink . . . and first with two new seedlings, one of which took the same award at Des Moines.



James Boyd Memorial Medal Awarded Brand Peony Farms at Des Moines National Peony Show

BRAND PEONY FARMS, INC.

Box 408

Faribault, Minnesota

A. M. BRAND, President

MYRTLE GENTRY, Sec'y-Treas.



Prairie Afire on Exhibit at the National Peony Show, Des Moines, June, 1932



*American Home
Achievement Medal*

“PRAIRIE AFIRE” It Was the Talk of the Show!

“In Brand’s display,” quoting from *Florists’ Review*, “was a large vase of *Prairie Afire*, which stood up wonderfully through the three hot days of the show. The name is exceptionally appropriate. It is a Japanese type with rose-pink guard petals surrounding a cluster of red petaloids tipped gold.”

Standing at the corner of our display where the two wings of the Brand exhibit converged—there is no doubt that *Prairie Afire* was the outstanding attraction of the national show at Des Moines. Fiery red and gold at the center, then graduating to a beautiful rose-pink at the edges of the petals . . . it was the flower that everyone paused to admire. *Prairie Afire* was shown in the prime of its beauty.

Mammoth blooms, fully eight or nine inches across . . . it was indeed “the talk of the show.” The opinion of the judges and visitors confirmed our own belief, that this new creation is the emblem of conspicuous achievement; a milestone of progress in peony history.

Notwithstanding all the other awards which we won at Des Moines, the fact remains that *Prairie Afire* was the main reason why we entered. The attention bestowed on this particular flower at the national show was in itself a most generous reward for all of our effort. It is gratifying to contemplate all the pleasure and satisfaction that this unusual flower will bring to the lovers of distinctively beautiful peonies.

20,000 of These Books

—BUT—

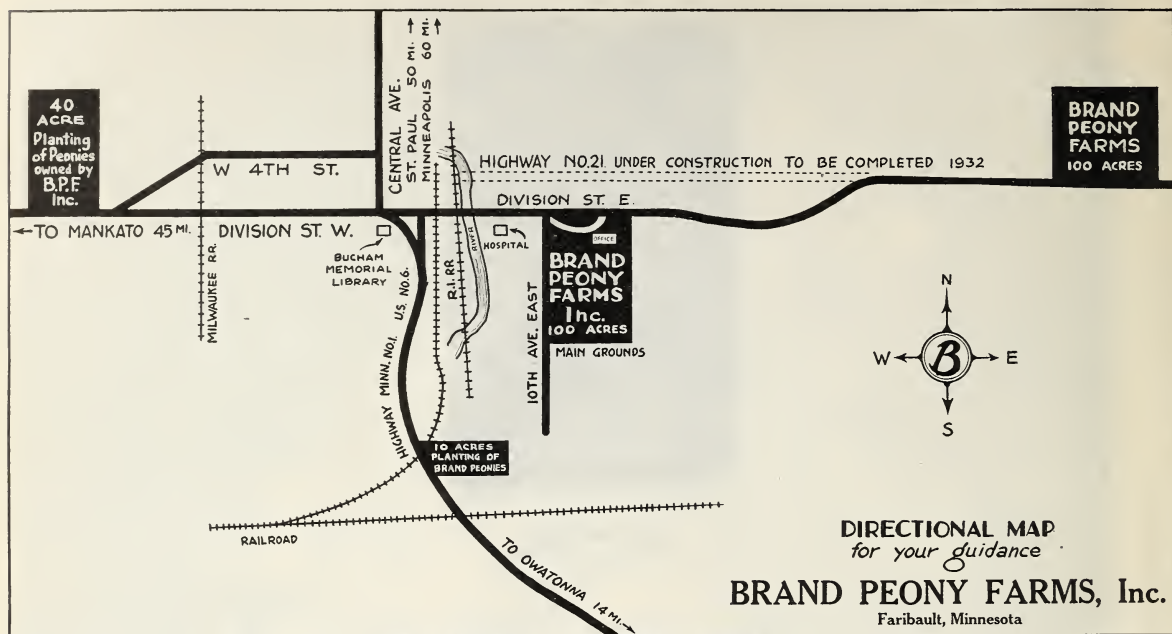
Only 100 Roots of “PRAIRIE AFIRE”

It will be years before *Prairie Afire* can be placed on the market in large quantities. The few roots we can spare now will, of course, go very quickly. To see *Prairie Afire* bloom next year in your own garden, we advise you to make your reservations promptly. If *Prairie Afire* had been available some

years ago, no price could have withheld demand until a moderate stock could be multiplied. The first stock of Brand’s new peonies have always been introduced at \$25 to \$50 a root. In comparison, *Prairie Afire* is a bargain while it lasts:

A Brand Division \$15.00.

NOW IS A GOOD TIME TO PLANT IRIS
For Special Prices and Discounts, See Pages 20 to 30, Inc.



Paste This Map on Windshield When Motoring to Brand Peony Farms

Our Peony List

ADDIELANCHEA (Brand) 8.8. White. A late mid-season creamy white with base of center petals yellow. Guard and crown petals flecked with crimson. A fine peony, comparable to Enchantresse and Grace Loomis.

A Brand Division \$3.00.

ADOLPHE ROUSSEAU (Dessert and Mechin) 8.5. Red. One of the very good early dark reds. The plant is very tall and holds its flowers so erect that it makes a fine showing.

A Brand Division \$1.00.

ALBERT CROUSSE (Crousse) 8.6. Shell pink. Albert, Felix, and Marie are three worthy peonies. Albert Crousse is a beautiful soft shell pink with narrow compact petals. An outstanding late mid-season variety.

A Brand Division \$1.00.

ALSACE LORRAINE (Lemoine) 8.8. Creamy white. A dainty and refined flower of beautiful form. Color, a rich creamy white with a suggestion of brownish yellow at the base of the petals similar to Solange.

A Brand Division \$1.00.

A. M. SLOCUM (Franklin) 9.0. White. A large, loosely built rose-type flower showing stamens. A profuse bloomer.

A Brand Division \$2.00.

A. P. SAUNDERS (ThurLOW) 8.6. Delicate pink. A large loosely built flower of true rose type. Outside petals extremely large with a ball of shorter petals unfolding in the center.

A Brand Division \$3.00.

ARCHIE BRAND (Brand) 7.5. Pink. A large, full rose-type blossom of an even shade of sea shell pink.

A Brand Division \$1.00.

ASA GRAY (Crousse) 8.1. Pink. A fragrant mottled salmon pink of true rose-type.

A Brand Division \$1.00.

ASSMANHAUSEN (G. & K.) 8.0. White. This is a splendid strong growing white with delicate pink tints. A desirable landscape variety.

A Brand Division \$2.00.

AUGUSTE DESSERT (Dessert) 8.7. Red. One of Dessert's best peonies. A flower of fine form, rounded velvety crimson petals with a silvery reflex. Stamens intermixed with the petals.

A Brand Division \$3.00.

AVALANCHE (Crousse) 8.7. White. A late mid-season variety. The flower is cone shaped and makes a splendid show flower. The blossom develops a distinct creamy white flower, surrounding a center of delicately tinted lilac-white petals with a few showing traces of carmine.

A Brand Division \$1.00.

AVIATEUR REYMOND (Dessert) 8.0. Red. A bright cherry red, shaded garnet. A loosely built mid-season variety.

A Brand Division \$1.00.

BALL O'COTTON (Franklin) 8.8. White. This is an outstanding fragrant white. It is an excellent show flower and is also a good garden variety. The plant is of medium height with strong stems and good foliage.

A Brand Division \$3.00.

BARONESS SCHROEDER (Kelway) 9.0. White. A most excellent late white coming into bloom just before Marie Lemoine. The flower opens a pale pink but soon fades to pure white. A desirable variety.

A Brand Division \$1.00.

BENJAMIN FRANKLIN (Brand) 8.1. Red. A tall dark red resembling Adolphe Rousseau in color and form. A profuse bloomer. Stems strong, usually carrying one flower to the stem.

A Brand Division \$1.00.

BETTY BLOSSOM (ThurLOW) 8.9. Soft yellow. Guard petals faintly tinted yellow with center petals clear white intermixed with a collar of short narrow staminodes heavily edged yellow, giving the entire flower a soft yellow effect.

A Brand Division \$7.50.

BISHOP BURKE (Vories). Red. A pleasing shade of rose-red which is distinctly different from other reds. Desirable both as a landscape and show variety.

A Brand Division \$7.50.

BLANCHE KING (A. M. Brand 1925). See page 14.

BRAND'S MAGNIFICENT (Brand) 8.2. Red. A very deep dark red carrying more blue than any other good peony. This variety is noted for its beautiful form, prolific bloom, broad symmetrical petals, and excellent color. A late mid-season variety.

A Brand Division \$1.00.

CANDEUR (Dessert) 8.4. Pink. A delicate pink, slightly tinted lilac-rose, fading to iridescent white. Center petals flecked carmine.

A Brand Division \$2.00.

CHARLES McKELLIP (Brand) 7.8. Red. A splendid red which we consider much underrated. This variety comes into bloom just after Mary Brand and we feel sure you will like it.

A Brand Division \$1.00.

CHARLES NEIDEL (Wettengel) 8.5. Light pink. A large flower semi-double in form. The guard petals enclose a center of irregular petals showing stamens. The general color effect is a light lilac-rose.

A Brand Division \$1.50.

CHERRY HILL (Thurlow) 8.6. Red. A very tall, semi-double, bright dark red. A splendid landscape variety.

A Brand Division \$1.50.

CHESTINE GOWDY (Brand) 8.4. Pink. A large late pink with splendid growing habits. The guard and crown petals are a light rose. These enclose a zone of fine, irregularly shaped closely set creamy petals. This variety of color is the object of special admiration.

A Brand Division \$1.00.

CLAIRE DUBOIS (Crousse) 8.7. Pink. A very fine large, late, bright rose pink. The best cut flower of its color in its season.

A Brand Division \$1.00.

CLEMENCEAU (Dessert) 8.5. Pink. A large late mid-season pink resembling that fine variety, Sarah Bernhardt. The flower is somewhat larger than Sarah Bernhardt.

A Brand Division \$2.00.

COMMANDER (A. M. Brand). Red. See page 14.

CORNELIA SHAYLOR (Shaylor) 9.1. Pink. We think that this is one of Mr. Shaylor's best peonies. A very late variety with heavy stems and excellent foliage. It opens a decided pink but gradually fades to an almost pure white with a greenish tint at the base of the petals.

A Brand Division \$5.00.

CORONATION (Kelway) 8.5. Pale pink. This is a distinctly shaped beautiful flower with good foliage and strong stems. Late mid-season. Opens a pale rose pink with crown petals flecked with crimson on edges.

A Brand Division \$2.50.

COURONNE D'OR (Calot) 8.1. White. Outer petals a pure white; then a ring of yellow stamens surrounding a tuft of center petals, tipped carmine. A late white coming into bloom just before Marie Lemoine.

A Brand Division \$1.00.

C. W. SCHOCH (Franklin). Red. An excellent late dark red showing no stamens. Very brilliant in the field. An excellent flower.

A Brand Division \$3.00.

DAVID HARUM (Brand) 8.4. Red. An even shade of Tyrian-rose, more distinct in color and form than any other red variety. An upright growing plant with very strong stems which hold the blooms erect. Midseason.

A Brand Division \$2.00.

DESIRE (Brand) 8.5. Pink. Very large flower, rather loosely built, with long broad petals showing stamens. Flowers very fine on well established plants.

A Brand Division \$1.00.

DR. H. BARNSBY (Dessert) 8.1. Red. A late light purplish crimson with strong stamens and good foliage.

A Brand Division \$1.00.

DUCHESS DE NEMOURS (Calot) 8.1. Creamy white. An early almost pure white with shadings of green at the base of the petals. A good flower.

A Brand Division \$1.00.

E. B. BROWNING (Brand) 9.1. White. A very late white coming into bloom with Marie Lemoine. The buds of this variety are often as large as the entire blooms of other fair sized peonies. Very fragrant.

A Brand Division \$2.00.

EDULIS SUPERBA (Lemon) 7.6. Deep pink. An early Decoration Day deep pink that deserves a place in every garden.

A Brand Division \$1.00.

EDWIN C. SHAW (Thurlow) 9.1. Pink. A very fragrant late mid-season pink. Medium height; fairly floriferous; very strong stems and excellent foliage. We consider this one of Thurlow's very best peonies.

A Brand Division \$5.00.

E. J. SHAYLOR (Shaylor) 8.7. Pink. A deep rose pink, shading lighter at the tips of the petals. Surrounding the center petals is a distinct band of petals edged and tipped with gold. A late mid-season variety.

A Brand Division \$3.00.

ELISA (Dessert) 8.5. Pink. A soft shade of bright pink with a distinct shading of salmon at the base of the petals. A loosely built flower showing stamens.

A Brand Division \$2.50.

ELWOOD PLEAS (Pleas) 8.7. Pink. A late mid-season, fragrant pale rose pink changing to light flesh-pink.

A Brand Division \$1.00.

ELLA CHRISTIANSEN (Brand) 9.0. See page 14.

ENCHANTRESSE (Lemoine) 8.9. White. A charming very late white. An excellent show flower. Prolong your blooming season by adding this excellent variety to your list.

A Brand Division \$1.00.

EUGENE VERDIER (Calot) 8.3. Pink. Often confused with L'Indispensable. Outer guard petals a lilac white, yet the general effect is a pale hydrangea pink with narrow petals of a creamy white.

A Brand Division \$1.00.

EUGENIE VERDIER (Calot) 8.6. Pink. A fragrant, desirable, delicate hydrangea pink. Early mid-season.

A Brand Division \$1.00.

EUNICE SHAYLOR (Shaylor) 8.9. Flesh-pink. A mid-season semi-double variety; beautiful on matured plants. Outer petals are a light pink. Center petals are a flesh-white with a circle of golden stamens around the center tuft. A good show flower.

A Brand Division \$5.00.

EXQUISITE (Kelway) 8.5. Pink. A mid-season, bright rose pink with long, narrow, pointed petals. Fragrant. Mid-season to late.

A Brand Division \$1.00.

FANNY CROSBY (Brand) 7.7. Yellow. Large light pink guard petals surround a central globe of deep yellow incurved petals. Early.

A Brand Division \$1.50.

FANNIE LEE (Vories) 8.4. Red. A strong robust plant producing a profusion of medium sized flowers of a beautiful shade of American Beauty red.

A Brand Division \$6.00.

FARIBAUT (Brand) 8.2. Pink. A late variety coming into bloom with Marie Lemoine. A deep rose pink with a silvery sheen. A free bloomer.

A Brand Division \$1.00.



Duchesse de Nemours



View Entering Main Grounds of the Brand Peony Farms at the East

FELIX CROUSE (Crousse) 8.4. A deep rose-red showing no stamens. It consists of a central bomb of incurved petals surrounded by broad prominent guard petals. A good all purpose red.

A Brand Division \$1.00.

FESTIVA MAXIMA (Meillez) 9.3. White. This is the oldest of our real good peonies. The blossom is true rose-type with broad guard petals surrounding a compact inner mass of rich white petals flecked crimson.

A Brand Division \$1.00.

FLORENCE MacBETH (Sass) 9.2. Shell-pink. A large, late mid-season shell-pink. This is a new and very promising variety.

A Brand Division \$10.00.

FRANCES SHAYLOR (Shaylor) 8.6. White. A large iridescent white interspersed with incurved yellow staminodes. Mid-season.

A Brand Division \$2.50.

FRANCES WILLARD (Brand) 9.1. White. Frances Willard is a very fine white which we believe gives universal satisfaction. It opens an exquisite blush white, occasionally with a carmine touch, changing to pure white. Usually found in the winning classes in every show room.

A Brand Division \$1.50.

FRANCOIS ROUSSEAU (Dessert) 8.2. A large early rich crimson with a dark silky sheen.

A Brand Division \$1.00.

FRANKIE CURTIS (Vories) 9.3. White. Except for color, this flower resembles Mons. Jules Elie. The guard petals are large and surround a great ball of narrow petals. This flower looks like a great chrysanthemum.

A Brand Division \$6.00.

GALATHEE (Lemoine) 8.1. Pink. A very fine late pink. The plant is tall, floriferous, good stems and foliage. This is a fine variety.

A Brand Division \$1.50.

GENERAL GORCAS (Van Leeuwen) 8.5. A large white with some petals edged or flecked crimson. A strong, tall, free flowering variety.

A Brand Division \$3.00.

GEORGIANA SHAYLOR (Shaylor) 8.9. Pink. A large, late mid-season light rose pink. Fragrance pleasing; plant medium height; floriferous; good stems and foliage. If Mr. Shaylor had never produced another peony, this one alone would immortalize his name among peony lovers. We always include it in our collections if our stock is sufficient to supply the demand.

A Brand Division \$2.00.

GERMAINE BIGOT (Dessert) 8.5. Pink. A mid-season light rose pink, loosely formed, and showing stamens. A good all purpose flower.

A Brand Division \$1.00.

GIGANTEA (Calot) 8.2. A fragrant brilliant rose pink with guards and collar tipped with silvery white.

A Brand Division \$1.00.

GOLDEN DAWN (Gumm) 8.6. Anemone type; mid-season. Yellowish center with broad guard petals of ivory-white. Very similar to Primevere and Laura Dessert.

A Brand Division \$3.00.

GRACE OTT (Gumm) 8.8. Red. A mid-season dark crimson showing bright yellow stamens. The plant is tall, erect, and a very free bloomer.

A Brand Division \$2.00.

GRANDIFLORA (Richardson) 8.8. Pink. A soft shell-pink, shading to white with faint shadings of rose. When one thinks the peony season is ended, he can still go out and cut fine blooms of Grandiflora.

A Brand Division \$1.00.

HANSINA BRAND (A. M. Brand) 9.1. See page 14.

HAZEL KINNEY (A. M. Brand) 9.0. See page 14.

HELEN WOLAVER (Brand) 7.9. Pink. A very late variety that does not come to perfection until the plant is about four years old. The guard petals are prominent, very stiff, of a deep pink. These petals are drawn away, leaving a compact mass of petals in the center of rose bud shape. Sweet scented and resembles a rose more than a peony.

A Brand Division \$1.00.

HENRY AVERY (Brand) 8.8. Light pink. A late mid-season variety. Guards and center petals a bright light pink. Between the guard and center petals is a very distinct collar, from an inch to an inch and a half wide of creamy yellow petals. This gives the flower a very striking appearance. This is a handsome peony making a fine garden variety as well as a striking show variety.

A Brand Division \$2.00.

HENRY M. VORIES (Vories) 8.9. Light pink. A large flat flower made up of long broad petals of great substance. A beautiful light salmon pink with darker shadings at base of petals. A tall growing very late variety with strong stiff stems.

A Brand Division \$5.00.

H. F. REDDICK (Brand) 7.7. Red. A good red peony especially valuable for its fine growing habits and its profuse blooming. Good for commercial purposes and garden effects.

A Brand Division \$1.00.

INSPECTEUR LAVERGNE (Doriat) 8.5. Red. A fine new early red with broad guard petals enclosing a center of narrower petals. The coloring is unusual. As this is a recent European introduction, it is not widely distributed and the stock is scarce.

A Brand Division \$12.50.

JAMES BOYD (Thurlow) 8.9. Flesh pink. Flesh, changing to nearly white, tinted at base of petals with yellowish salmon. Guard petals notched at tips, giving a fringed effect. Very fragrant. Late.

A Brand Division \$2.50.

JAMES KELWAY (Kelway) 8.7. White. This variety received a rating of 8.7 when the last symposium was taken, after 49 people had voted. This fact, alone, places it among the good varieties. The flower is very large, loose and semi-rose in type. It opens a rose white changing to milk white with base of the petals tinged yellow. The fragrance is strong and pleasing.

A Brand Division \$1.00.

JAMES R. MANN (Thurlow 1920) 8.7. Pink. Large, deep, rosy pink, with one or two crimson streaks in the center of the flower and an occasional marking on back of guard petals. Central petals incurved, giving a very graceful effect. Mid-season.

A Brand Division \$3.00.

JEANNOT (Dessert) 9.2. Pink. A large, imbricated cup-shaped flower of fine form. Flesh pink, slightly tinged lavender, with salmon pink shadings at base of petals. A very fine show flower, coming into bloom late in the season.

A Brand Division \$3.00.

JUBILEE (Pleas) 8.9. White. Very large, flat, ivory-white flowers. Petals long, narrow, and loosely arranged, producing a very attractive feathery effect. Everyone familiar with peonies knows that Jubilee is a fine flower. Its only defect is a weak stem, yet one can well afford to support such a beautiful flower.

A Brand Division \$1.00.

JUDGE BERRY (Brand) 8.6. Pink. This is a fine delicate pink coming into bloom with that very early deep pink, *Edulis Superba*. Its attractive, large flat flowers are of excellent color and texture. Coming at the beginning of the peony season, when most varieties are of small or medium size this immense flower has a peculiar distinction, and will be wanted by every peony buyer who wishes a really good early pink.

A Brand Division \$2.00.

JUNE DAY (Franklin) 9.0. Pink. We think June Day is one of the very best of Mr. Franklin's introductions. A flower of striking beauty, light flesh with lavender shadings on the edge of the central petals. Pleasing fragrance, upright grower with dark green foliage.

A Brand Division \$3.00.

KARL ROSENFELD (Rosefield) 8.8. Red. A brilliant and striking variety, coming into bloom early midseason. Flowers very large, semi-rose type, and slightly fragrant. Desirable as a cut flower.

A Brand Division \$1.00.

KATHERINE HAVEMEYER (Thurlow) 9.0. Originator's description: "Large, rose-type, flesh pink in color; guard petals broad and rounded, somewhat notched at the ends. Center petals narrow and fringed. Full, high

center. Sweet fragrance. Midseason to late. Honorable Mention, American Peony Society, London, Ontario, 1922." Of all of Thurlow's peonies, which we regard very highly, Katherine Havemeyer is one of the finest.

A Brand Division \$4.50.

KELWAY'S GLORIOUS (Kelway) 9.8. White. Although not as symmetrical as *Le Cygne*, we believe this wonderful variety is fully as good and deserves as high a rating. Immense blooms with very long petals, so arranged that the entire bloom resembles a great downy ball of the most exquisite, delicate, snow white lace. For a peony of great size, probably no other can exhibit such perfection of beauty.

A Brand Division \$4.00.

KELWAY'S QUEEN (Kelway) 8.8. Pink. The stocks of this variety have been badly mixed and many spurious sorts have been sold under the name of *Kelway's Queen*. Once the genuine variety is seen, there can be no mistake. It is a distinct peony, both in flower and plant. We have the true variety and guarantee our stock of *Kelway's Queen* to be absolutely genuine. A large, compact, rose type flower of uniform mauve, with center flecked crimson. A tall, strong grower, very profuse bloomer. Late midseason. One of *Kelway's* finest. Very distinct color, a great show flower.

A Brand Division \$4.00.

LADY ALEXANDRA DUFF (Kelway) 9.1. Pink. One of the largest and most beautiful of all peonies. An immense, loosely built flower with great broad rounded petals. A pale blush pink, fading to white, with yellow stamens. When not disbudbed, the central flower is loosely double, of a rather flattened, circular form; central petals touched with carmine. A beautifully formed flower; sweet scented. Very floriferous. Very showy. Opening after the central flower, the side flowers come semi-double, saucer-shaped, showing stamens.

A Brand Division \$1.00.

LaFAYETTE (Dessert) 7.8. Pink. Rose type. Mid-season. Flowers are large, last well, and the petals are beautifully fringed. Color, a lovely shade of salmon-pink.

A Brand Division \$1.00.

LA FEE (Lemoine) 9.2. Pink. A scarce variety, seldom seen in any garden. Plants tall with but few stalks to the plant. Long narrow sharply pointed foliage. Flowers very large, loosely built, with long narrow petals sharply notched at the edges. Guards mauve-rose. Collar creamy white. A beautiful mottling of different shades of pink. Strikingly beautiful, both in the field and show room.

A Brand Division \$2.50.

LA FRANCE (Lemoine) 9.0. Pink. A flower that gives wonderful results in our soil and climate. Blooms very large, true rose type. Color a true uniform apple blossom pink, with crimson splashes on the guards. Tall, strong, robust plant—a suitable support for enormous blooms. In the years when *La France* is in prime, no flower in the pinks outranks it in the shows.

A Brand Division \$2.00.



Judge Berry



Leaving Brand Peony Farms, Furthest Field to the West, This Illustration Gives a View of Only Half the Field Containing Forty-two Acres. Rows Are 60 Rods in Length.

LAKE O'SILVER (Franklin). Pink. This is a light pink silver-tipped variety, with golden anthers prominently showing throughout the flower. The central petals are a darker pink. The bloom is very large, often seven to eight inches in diameter on established plants. It is an extremely free bloomer. Very desirable.

A Brand Division \$2.00.

LA LORRAINE (Lemoine) 8.6. Pink. A large flower, nicely rounded, with great broad petals beautifully arranged. Color, a soft even shade of creamy pink. In our opinion, this flower is not fully appreciated, for it is one of the choicest of all peonies and should rate well above 9.0. From our first observation of the flower, this has been our constant impression. When shown together with magnificent blooms of *Le Cygne*, *Therese*, *Kelway's Glorious* and *Mme. Jules Dessert*, we have seen blooms of *La Lorraine* which showed up equally beautiful; and we think it is just as good a flower.

A Brand Division \$3.00.

LA PERLE (Crousse) 8.5. Pink. A floriferous variety with strong stems and good foliage. Guard petals a rose-pink with a slightly darker center, showing flecks of crimson. Beautiful both in the bud and open flower.

A Brand Division \$1.00.

LA ROSIERE (Crousse) 8.3. White. Large flowers in clusters; straw-yellow at the center, shading to a creamy white border—this is indeed a striking variety. Pleasing fragrance. The flower is loose, showing a band of yellow stamens which light up the flower with a yellowish cast.

A Brand Division \$1.00.

LAURA DESSERT (Dessert) 8.8. Yellow. This peony, *Primevere*, and *Fanny Crosby* are the three finest yellow peonies. The flower is round, of rose type. Guard petals creamy white, enclosing a dome-like center of pure canary yellow. Like *Fanny Crosby*, the plant is an upright grower, holding blossoms erect for good landscape value. Like all yellows, it must be developed inside away from the sun to preserve its color.

A Brand Division \$3.00.

LAURA VORIES (Vories). Not yet rated. Pink. Like all the rest of Vories' new famous seedlings, this is a strong, robust plant. Flowers are large, delicate flesh-white, shading to a deeper pink in the center, with a few central petals edged crimson. A beautifully formed peony.

A Brand Division \$2.00.

LAVERNE CHRISTMAN (A. M. Brand) 8.9. See page 15.

LE CYGNE (Lemoine) 9.9. White. A flower of true rose type, perfect in form. Creamy white with no tracings of color. Strong, medium height stems; each one produces a perfect bloom. Flowers large and delightfully fragrant. *Le Cygne* is the highest rated peony and fully deserves its rating. Early midseason.

A Brand Division \$3.00.

LIBELLULE (Dessert) 8.2. Pink. Very excellent flower, flesh color, slightly shaded and splashed carmine, straw and salmon at base; very pleasant fragrance. (In-producer's description).

A Brand Division \$2.00.

LILLIAN GUMM (Gumm) 8.8. Pink. A new flower of outstanding qualities, good enough to be repeatedly singled out from hundreds of varieties in the field. Very large, globular in form, rose type, with great broad petals, and a cupped center. Color, uniform apple blossom pink with more brilliant shadings at the base of petals. We are confident this is a coming flower.

A Brand Division \$2.50.

LIVINGSTONE (Crousse) 8.1. Pink. A deep pink that comes into bloom just before *Grandiflora*. Blossoms very large, compact, perfect rose type. Center petals flecked with carmine. One of the most satisfactory of the late pink peonies.

A Brand Division \$1.00.

LONGFELLOW (Brand) 9.0. Red. Everyone concedes Longfellow one of the most popular red peonies because of its distinct, fadeless color and general dependability, both for cutting and garden decoration. It is as striking in the field as in the show room. It comes into bloom early midseason. The plant has excellent foliage and strong stiff stems. The flower is a bright crimson and is always found among the winning classes in every show room.

A Brand Division \$1.50.

LORA DEXHEIMER (Brand) 8.4. Red. To us, the splendid habit and brilliant color of this plant have exceptional merit. We first selected it from the seed bed in 1904. Each succeeding year it has grown in our esteem. Color, intense flaming crimson. Early midseason. A variety that ranks with Longfellow. From all parts of the country, we have reports of the wonderful qualities of Lora Dexheimer.

A Brand Division \$1.00.

LOVELINESS (Hollis) 8.8. Pink. Produces very large, flat, hydrangea pink flowers; blooms of wonderful beauty. It is Hollis' best peony. Plants tall with heavy foliage and stems strong enough to hold the immense blooms erect. The flowers, a uniform shade of pink, make wonderful show flowers.

A Brand Division \$1.00.

LUETTA PFEIFFER (Brand 1916) 8.7. Pink. Very large, semi-double, pinkish white. Foliage, large and clean; stems long and stout. Immense blooms are produced in great profusion. Petals are long, broad, of great substance; a pure hydrangea pink interspersed with just enough golden stamens to be beautifully fascinating. Blooms early.

A Brand Division \$2.00.

LUELLA SHAYLOR (Shaylor). White. Midseason. Another very fine Shaylor variety with so much yellow in the white as to give the entire flower a distinct yellow cast. Wonderfully rich in appearance.

A Brand Division \$5.00.

MABEL L. FRANKLIN (Franklin) 9.0. Pink. Outer petals a light pink with extreme center petals a darker

pink. Short, creamy petals are intermingled near the crown of the flower, adding greatly to its beauty. Light margin of lavender on the inner petals. Delightfully fragrant.

A Brand Division \$4.00.

MADELON (Dessert 1922). Pink. A beautiful silvery pink among the latest of Dessert's originations. Petals imbricated and slightly touched with carmine. A splendid late variety.

A Brand Division \$5.00.

MARGUERITE GAUDICHAU (Millet) 8.1. Pink. A medium shade of light rose-pink, almost white at edge of petals. A very large bloom, slightly fragrant. Petals are toothed and jagged in the center, giving an irregular carnation-like appearance. Late.

A Brand Division \$1.00.

MARIE LEMOINE (Calot) 8.5. White. Has the most pleasing and pronounced fragrance of any peony. A sulphur-white, occasionally showing a carmine tip. One of the most beautiful of all peonies. Very late; it should be in every collection.

A Brand Division \$1.00.

MARIE CROUSSE (Crousse) 8.9. Pink. A very attractive flower. Color, very delicate shell pink bordering on salmon. Stiff, upright stems. Fragrant. Midseason to late. A splendid variety, distinct in color from any other pink you may have. A most desirable sort for distant effect. Such a clear pure self color—it attracts the eye, even when blooming among a hundred different pinks.

A Brand Division \$1.00.

MARIE JACQUIN (Verdier) 8.3. White. A flower with purest white guards; then a collar of yellow stamens surrounding a row of shorter pure white petals, then a tuft of yellow stamens, giving the flower a pronounced water-lily effect. One of the most dainty peonies in the list. The stems are erect, a clean light green, as is also the foliage. The flower is semi-double, held perfectly erect, and on young plants it often comes a beautiful single.

A Brand Division \$1.00.

4 Distinctive Peonies

IN

4 Different Colors

All Belong In

The World's 26 Best Peonies

IF PURCHASED SEPARATELY . . . A TOTAL VALUE OF \$6.50

Collection Price . . **\$4** . . You Save \$2.50

LONGFELLOW (Brand) 9.0. Here is a real red that holds its color in the sun. In looking over a field of peonies, you can easily spot Longfellow, so intensely brilliant **\$1.50**

FRANCES WILLARD (Brand) 9.1. A fine white, so wonderful that it seems to give universal delight. A midseason variety. With such fine growing habits, Frances Willard makes a splendid flower both in the garden and the show rooms. **\$1.50**

TOURANGELLE (Dessert) 9.4. An excellent late pink of peculiar shade. It is really a pearly white suffused with shades of delicate salmon and La France Rose. A wonderful show flower. **\$1.50**

WALTER FAXON (Richardson) 9.3. One of the finest show flowers grown. This is a real salmon pink, so different from any other pink peony. Once you see it, you cannot forget this distinctive flower. **\$2.00**



Planting of Therese

MARTHA BULLOCH (Brand) 9.1. Pink. Very tall, very large, late—one of the greatest of all peonies. We must judge peonies not alone by individual taste but by performance over a long period. The great peonies receive the awards at the large shows. The Northwest Peony Show is staged alternate years in St. Paul and Minneapolis. Outside of the National Show, it is the largest Peony Show in America, taken year after year. Here peonies from all varieties are shown at their best by expert showmen. The class that brings out the best flowers is the class that calls for ten vases, one each of ten varieties, three blooms to a vase. Into this class go the ten best vases of each exhibitor. Martha Bulloch is almost invariably in the exhibit that wins first. Bright old-rose pink; center of lighter rose, and pink. Rose-like fragrance. Tall, straight stems. Immense blooms. The most beautiful peony of its size.

A Brand Division \$2.00.

MARY BRAND (Brand) 8.7. No red peony ever won favor so quickly as Mary Brand. Always found among the winning reds in every show room. Comes into bloom with Frances Willard. Color so distinct, it is easily recognized by amateurs, no matter how often they see it in our fields. A rose type peony showing stamens. A red in which there is little trace of purple. One of the most satisfactory reds as a cut flower as it will last a week and hold right up stiff, if cut in the bud.

A Brand Division \$1.00.

MARY B. VORIES (Vories) 8.0. White. A large rose type flower showing a few stamens. Opens a large, round, cup-shaped flower, flat on top. Pure white, with just an occasional faint tracing of carmine. Late. Very strong stems.

A Brand Division \$5.00.

MARY P. KING (Franklin) 8.7. Pink. One of the good new varieties sent out in recent years. We regard it very desirable. Large, semi-double, crown type. Uniform light rose pink, shaded deeper at the center with crimson markings.

A Brand Division \$2.00.

MARY WOODBURY SHAYLOR (Shaylor) 9.0. Pink. A very large flower of most refined beauty, borne erect on very strong dwarfish stems. Outer petals are a delicate light shell pink; central petals a yellowish creamy white tinted salmon. Very fragrant; a most beautiful sort. Midseason.

A Brand Division \$2.00.

MIDNIGHT (Brand) 7.3. Dark red. Often called the "BLACK PEONY"—it is almost as dark as Mons. Martin

Cahuzac, considered the darkest red. Medium early, preceding Longfellow. Flowers are large and borne on long, stiff stems. For a very dark red peony, order this variety.

A Brand Division \$1.00.

MILTON HILL (Richardson) 9.0. Pink. A very beautiful flower of a delicate shade of salmon pink, resembling Walter Faxon. Seen in the show room in first class form, this variety is impossible to beat in its color. It received a rating of 9.0 with sixty-three voting. We can never supply the demand for roots. To obtain Milton Hill, you should reserve your stock of this variety.

A Brand Division \$2.00.

MINNIE SHAYLOR (Shaylor) 8.9. Pink. Semi-double, large, midseason. Rather openly built, consisting of several rows of fluffy, crepe-like petals of clear, light pink, serrated at the tips of the central petals. Stamens very prominent, carpels green with pink base. A beautiful flower that will rank among the finest.

A Brand Division \$10.00.

MISS SALWAY (Kelway) 7.8. Pink. The true Miss Salway is one of the most refined and beautiful peonies. Its low rating of 7.8 was an injustice and misfortune, as many had the old variety Solfatarre which they had bought for Miss Salway. The true variety is crown type, guards and center a delicate flesh pink with a creamy white collar of smaller petals, irregularly notched. Sweetest of fragrance; in every way a most desirable flower.

A Brand Division \$1.50.

MLLE. LEONIE CALOT (Calot) 8.1. Pink. Typical rose type. Very delicate, rose-white, center of deeper shading, slight carmine tips. Fine form, medium height, rather spreading habit. Late midseason. A great favorite with many admirers.

A Brand Division \$1.00.

MME. AUGUSTE DESSERT (Dessert 1899) 8.6. Rose. Very large flower, semi-rose type. Uniform violet rose, petals slightly flecked crimson. Erect, medium height, free bloomer. Early midseason.

A Brand Division \$1.00.

MME. de VERNEVILLE (Crousse) 7.9. White. We feel this variety is much underrated. Flower large, very full, bomb type. Guard petals sulphur white; center petals rose white with carmine touches. Good substance. Stems, long and strong. An ideal cut flower. Pleasing fragrance. Comes into bloom after Festiva Maxima, and we regard it superior in beauty.

A Brand Division \$1.00.

MME. EDOUARD DORLAT (Dessert-Dorlat) 8.6. White. Loose, globular flower, large size with beautiful rounded petals, slightly tipped and penciled crimson on the edges. The outer petals reflex about a cupped center; stamens visible among the petals. Having watched this variety for six years, we regard it as one of the best flowers coming from Europe in late years.

A Brand Division \$5.00.

MME. EMILE GALLE (Crousse) 8.5. Pink. Blooms of this variety are large, compact, flat rose type. Color, delicate sea shell pink with touches of heliotrope and lavender. Strong, medium tall plant; a free bloomer. Extra fine in the bud. Comes into bloom with the very late ones of which it is one of the best. Often mistaken for Tourangelle.

A Brand Division \$1.00.

MME. EMILE LEMOINE (Lemoine) 8.9. White. A rare, beautiful peony; strong grower, free bloomer. Flowers very large, uniform in shape and size. Plant rather tall with strong erect stems. Bloom is very perfect in form, with large rounded rose-like petals of a tender glossy white, overlaid with a sheen of delicate satiny pink, covered with tiny dots of deeper pink. Petals of great substance.

A Brand Division \$1.00.

MME. GAUDICHAU (Millet) 8.8 Red. Strictly a first-class red. Very dark crimson, it resembles M. Martin Cahuzac, although it's a much prettier plant. Flowers are large, loose, and stand the sun remarkably well. Late midseason. Stems are red; foliage both in the spring and again in the fall is of dark reddish color.

A Brand Division \$2.00.

MME. JULES DESSERT (Dessert) 9.4. Pink. One of the finest of all peonies—flowers very large, well-formed, with long, broad petals. Blooms held rigidly erect on good straight stems of medium height. Color a creamy white, lighted with buff and salmon shades. A few golden stamens appear to beautify an already beautiful flower. Always among the main prize winners at the great shows.

A Brand Division \$1.50.

MME. MANCHET (Dessert 1913) 8.5. Pink. Large, imbricated, very full flower. Silver lilac, shaded purplish pink at the base of petals. Very late.

A Brand Division \$1.00.

MODELE DE PERFECTION (Crousse 1875) 7.8. Pink. Large compact, cup-shaped, rose. Color flesh pink, marked with bright rose deepening in the center. Good erect habits. Strong stems. Wonderful bloomer. Fragrant. A very distinct and very desirable late variety.

A Brand Division \$1.00.

MODESTE GUERIN (Guerin) 7.8. Pink. This is a rose pink. The flowers are large, compact, and bomb-shaped. Extra fine in the bud. Medium early, a free bloomer, and very fragrant.

A Brand Division \$1.00.

MONSIEUR DUPONT (Calot) 8.3. One of the old standard peonies, always desirable. A glistening ivory white, with center petals bordered with carmine. Golden stamens mingled with the petals throughout the flower. Deliciously fragrant, wonderfully prolific, a consistent bloomer. Appears just before Couronne d'Or.

A Brand Division \$1.00.

MONS. JULES ELIE (Crousse) 9.3. Pink. One of the largest, most beautiful peonies; in fact, the largest of the globe type varieties. An immense self-colored flesh pink, shading a trifle deeper toward the base of petals. Great prominent broad guard petals enclose an immense ball of incurved narrow petals of the same color, all covered with an intense silvery sheen.

A Brand Division \$1.00.

MONS. MARTIN CAHUZAC (Dessert) 8.8. A shade darker than Midnight or Prince of Darkness. If you wish the darkest red peony grown, order this one. Flowers medium to large, rose type, with stamens. Color a deep maroon red. One of the most earnestly sought peonies.

A Brand Division \$1.50.

MONT. BLANC (Lemoine) 8.4. The stocks of this variety have been badly confused. Many do not have the genuine. We have incurred much expense to true up our stock so we know we have only the genuine. Milk-



BRAND'S

64 Page Manual

International Authority

ON

Successful Peony Culture

Full of interesting information, covering the history, the cultivation, and the description of all outstanding varieties of peonies.

After you read our book, we believe you will agree with us that there are few questions about the peony left unanswered.

50c a copy—only 25c a copy with each order of \$3.00 to \$5.00.

FREE WITH EVERY ORDER
AMOUNTING TO MORE THAN \$5.00

Correspondence

Each day we answer many letters in reply to questions asked by our friends. Practically all of these questions are answered in our Manual. Our correspondence has grown to the point where it is difficult to take care of it and it was for this reason we wrote the Manual. If our customers who have the Manual will read it carefully, it may save us a letter. This book is sent free to those who purchase of us and to others a small charge is made. The book is worth more than the price asked and if you do not have a copy we urge you to get one.

white with center slightly tinted rose. Large, very compact, globular flower, borne on stiff medium height stems. Very fine.

A Brand Division \$1.50.

MR. L. VAN LEEUWEN (Nieuwenhugzan). Red. Outer petals very large and cupped; center petals form a beautiful rosebud center. Very tall robust grower; most profuse bloomer. Flowers very large, color of the Red Radiance Rose. Took first prize at Ft. Wayne National Show as best vase of twenty reds. Very striking.

A Brand Division \$5.00.

MRS. A. G. RUGGLES (Brand) 8.3. Pink. Resembles Therese. When grown in the same row and in bloom at the same time, critical visitors have taken all the plants for Therese. Mrs. A. G. Ruggles should be disbudded to give the best blooms. In an occasional year, this variety is disappointing; then other years it is simply wonderful. In 1926 it was the finest flower in our entire fields.

A Brand Division \$1.50.

*Reine Hortense*

MRS. A. M. BRAND (A. M. Brand) 9.6. See page 15.

MRS. CHARLES GILBERT (Shaylor). Pink. Large, loose, the exact color of Therese but it blooms later. Combines remarkable delicacy of color with exceptionally beautiful form.

A Brand Division \$5.00.

MRS. C. S. MINOT (Minot) 9.2. Pink. Very large. Late. Guard petals large, flesh pink with coppery tints on outer surface; center incurved flesh white darkening to cream pink; a few golden stamens showing; occasionally a purple blotch. Semi-dwarf, strong stiff stems. Unusually good—we class it as one of the very best.

A Brand Division \$10.00.

MRS. DEANE FUNK (A. M. Brand). See page 15.

MRS. EDWARD HARDING (Shaylor) 9.3. White. A very fine flower of perfect form and delicate, lacy quality. Midseason. Plant medium height, free flowering, and stiff stems.

A Brand Division \$2.50.

MRS. F. A. GOODRICH (A. M. Brand) 9.0. See page 15.

MRS. FRANK BEACH (A. M. Brand) 9.0. See page 15.

MRS. HARRIET GENTRY (A. M. Brand). See page 15.

MRS. JOHN M. KLEITSCH (A. M. Brand). See page 15.

MRS. JOHN M. LEWIS (Lewis) 8.2. Red. Midseason dark crimson. Color similar to Cherry Hill. Plant medium tall; robust habit; floriferous.

A Brand Division \$2.00.

MRS. ROMAINE B. WARE (A. M. Brand) 9.1. See page 15.

MYRTLE GENTRY (A. M. Brand) 9.1. See page 15.

NANCY DOLMAN (Vories) 9.1. Rose-pink. Large, late, rose-pink with fluffy petals, becoming pinkish white in center. Plant tall, robust, and floriferous. Stems strong and foliage good.

A Brand Division \$6.00.

NELL SHAYLOR (Shaylor). Too new to be rated. A large beautiful creamy white with lots of yellow in the flower. A very striking and beautiful flower.

A Brand Division \$5.00.

NINA SECOR (Secor) 9.0. White. Flowers medium to large. Tall, graceful, light green stems. Rather narrow, clean, light green foliage. Bloom absolutely pure white, of true rose type. Built high with a cupped rosebud center. Very fragrant. One of the very best pure whites. Much like Kelway's Glorious. For years we have watched this flower, greatly impressed with its wonderful qualities. Now in bloom on old established plants in our own fields, we are still more impressed and we venture that its rating will climb still higher.

A Brand Division \$4.00.

NYMPHAEA (Thurlow) 8.8. White. Large flat flowers with wide, silky petals of delicate creamy white, notched at tips, edges somewhat rolled; yellow stamens in center reflect a golden light throughout. Fragrant. Midseason. Remindful of a water-lily only much larger and more beautiful than any water-lily we have ever seen. Very refined; a real addition to our growing list of good peonies.

A Brand Division \$1.50.

OCTAVIE DEMAY (Calot) 8.5. Pink. A very early flesh pink. Collar has ribbon-like white petals; center a deeper pink than guard petals. Rather dwarfish plant, yet an excellent cut flower, as the foliage extends to the ground. In the delicate pinks, the best early cut flower.

A Brand Division \$1.00.

OFFICINALIS RUBRA 8.6. Red. Large, round bloom of vivid crimson. The deep bright red peony of olden times. Earliest of all good peonies. Very desirable in this latitude; often in bloom on Memorial Day. The red "piney" of our grandmothers' gardens.

A Brand Division \$1.00.

OPAL (Pleas) 8.5. Pink. Guard petals a delicate pink, fading to white; the center is opal pink. Tall vigorous plant; profuse bloomer. One of the daintiest and most beautiful of all Pleas' peonies.

A Brand Division \$1.00.

PERRETTE (Dessert) 8.3. White. A beautiful flower borne in clusters. White, slightly tinged flesh and straw-yellow. Pleasing fragrance. A variety that must be seen to be appreciated.

A Brand Division \$2.00.

PETER PAN (Hollis, 1907) 8.6. Double type; large; late. Irregularly cupped flowers of bright old-rose, opening flat, showing a fluffy center of yellow stamens mixed with long, shaggy petals, a few of which are edged red; moderate rose fragrance. Average height; floriferous; stiff, wiry stems. Foliage small and glossy.

A Brand Division \$1.00.

PHILIPPE RIVOIRE (Riviere) 9.2. Red. Very fine bright crimson. Beautiful form, splendid in plant growth; most fragrant of the reds. Midseason. A fine show flower. No stamens. Most distinct in color of all the reds; not bright like Mary Brand or Longfellow yet it shows an absence of the purple which is so objectionable. The extremely beautiful form and uniform soft color makes a flower loved by all who see it. The true stock is very scarce; much spurious stock is on the market but ours is absolutely true.

A Brand Division \$5.00.

PHILOMELE (Calot) 7.7. Rose. Medium size. Flat crown type. Guards bright violet rose; anemone center of amber yellow petals, changing to cream. As flower develops, a crown of bright rose appears in the center. Midseason. A strong, free bloomer, very desirable with much deep yellow in make-up. A very striking landscape sort.

A Brand Division \$1.00.

PHOEBE CARY (Brand) 8.8. Pink. Much like Martha Bulloch. Introduced in 1907, it met such quick demand that our stock was almost gone before we knew. What we had for sale last year was gone before the season was over, and we were obliged to refund on late orders. A true rose type. Petals large, broad, of good substance, slightly cupped. Color a beautiful rose pink with center slightly deeper in shade. Pleasing fragrance. Late in season with Marie Lemoine. Tall plant; abundant clean, light green foliage.

A Brand Division \$2.50.

PHYLLIS KELWAY (Kelway) 8.8. Pink. Very large, loosely built, the most exquisite beauty. Color deep lavender flesh with long rays of lighter lavender playing the length of the petals through the deeper colors. A row of broad petals surrounds a loosely built cup-shaped center of long narrow petals intermingled with conspicuous yellow stamens. Long, stiff stems hold blossoms erect—a gorgeous beauty in the rays of sunlight—one of the most brilliant and striking peonies in the list.

A Brand Division \$4.00.

PIERRE DUCHARTRE (Crousse) 8.2. Pink. Beautifully formed globular flower, often mistaken for La France. Beautiful symmetrical form with great broad rounded petals; true rose type. Color a pale lilac flesh with glossy reflex, bordered with silver. We have always considered this peony as not being fully appreciated and much underrated. It is in a class with Reine Hortense, Livingstone, La Perle, etc.

A Brand Division \$1.00.

PRESIDENT COOLIDGE (A. M. Brand). See page 15.

PRESIDENT WILSON (Thurlow) 9.3. Pink. A large flower, on very stout stems of medium length. A very pleasing soft pink changing to shell pink, the guards sometimes showing crimson markings. Asked to examine a private show of wonderful peonies staged by Mr. E. C. Shaw, I was asked to pick out the best vase of flowers without looking at the labels; and my choice was a vase of President Wilson. One of the great peonies.

A Brand Division \$5.00.

PRIDE OF ESSEX (Thurlow) 8.9. A delicate light pink, blooming in midseason. Tall plant, vigorous and free blooming. Large, loose, rose type flower—a very fine variety.

A Brand Division \$2.00.

PRIMEVERE (Lemoine) 8.6. A fine yellow peony. Guard petals creamy white, enclosing a central ball of sulphur yellow. If cut in the bud, as it begins to open, so the flower may develop away from the sun, it will hold a clear yellow color, very beautiful.

A Brand Division \$1.50.

RACHEL (Lemoine) 8.3. Pink. Not to be confused with another bearing the same name originated by Terry. This is a tall-growing variety, with long, straight stems. Color a beautiful shade of soft pink with salmon shadings. Late midseason.

A Brand Division \$2.00.

RAOUL DESSERT (Dessert) 9.0. Pink. Large, globular, high built, with long broad petals. Flowers perfect in form with pleasing fragrance are borne on tall stout stems. Color much like Walter Faxon and Souv. de Louis Bigot only more brilliant with shadings more marked. A much better plant and performer in the field than either.

A Brand Division \$3.00.

REINE HORTENSE (Calot) 8.7. Pink. A showflower usually found in the winning classes. Sometimes sold under the name of President Taft. Tall growing, it produces lots of large perfectly-formed flowers on long, stiff stems. Color a uniform hydrangea pink, minutely splashed on a white background; also prominently flecked with crimson. Truly a wonderful flower—we can seldom supply the demand.

A Brand Division \$1.00.

RENEE MARIE (Dessert) 8.4. White. A flower very elegant in form, soft flesh pink, shaded salmon, fading to silvery white, flecked with carmine. Good strong stems. Very erect. Free midseason bloomer.

A Brand Division \$1.00.

REV. H. TRAGITT (A. M. Brand). See page 15.

RICHARD CARVEL (Brand) 8.8. Red. An early crimson parallel to the pink Mons. Jules Elie. With its extra early blooming qualities, large size, and splendid habits, this variety is already a well-established favorite. The demand is increasing so rapidly, we advise you to order early. A single plant on the lawn is attractive and delightful, beautiful and lasting. A valuable cut flower. The best of all early dark reds. Unlike most reds, the odor is pleasant and pronounced, a very rare quality in the reds.

A Brand Division \$1.50.

ROSA BONHEUR (Dessert) 9.0. Pink. A very fine midseason flower. Color, light violet rose with guard petals flecked crimson. Erect, medium strong grower. Flowers are large, flat, of rose type.

A Brand Division \$2.00.

ROSE SHAYLOR (Shaylor 1920) 9.1. Very large, midseason, pale flesh pink, tinted rose-pink. Creamy yellow at the base of petals; center petals strongly marked at

the edges with crimson. Tall, strong, free flowering; stiff stems. Good foliage.

A Brand Division \$10.00.

ROSETTE (Dessert) 8.8. Pink. Pretty flower of fine shape like a Captain Christy rose, silvery flesh shading to a salmon at base of petals and flecked crimson on the edges. A splendid variety of erect habit.

A Brand Division \$2.00.

SARAH BERNHARDT (Lemoine) 9.0. Pink. Another variety that prevails in the show room. So well known, it seems unnecessary to say that it should be in every garden. Semi-rose type. Late midseason. Color, apple blossom pink with each petal silver tipped. Agreeable fragrance.

A Brand Division \$1.00.

SARAH K. THURLOW (Thurlow) 9.1. Pink. A large, very late, delicate pink with coloring similar to Tourangelle. The stems are long and slender but support the flowers well. Fragrant.

A Brand Division \$5.00.

SILVIA SAUNDERS (Saunders) 8.7. A beautiful little flower reminding of a semi-double wild prairie rose. Semi-double blooms open out flat slightly cupped. Around the edge is a double row of wide rounded rose-colored petals which in turn surround a central cluster of short stamens with delicate light green carpels, tipped bright pink. Delicately beautiful—a peony masterpiece.

A Brand Division \$7.00.

SOLANGE (Lemoine) 9.7. Pink. Color a deep orange salmon, or Havana-brown at the heart, overlaid with a delicate, tender, rich cream. Rose type. Midseason. A splendid variety.

A Brand Division \$2.00.

SOUVENIR de LOUIS BIGOT (Dessert) 9.1. Salmon pink. Color, a brilliant rose, slightly tinted carmine at the base, turning to a salmon pink. Resembles Walter Faxon in color but stands up much better in the field.

A Brand Division \$2.00.

STANDARD BEARER (Hollis) 8.5. Pink. Color, light violet rose. Resembles Mons. Jules Elie. Medium tall plant; strong, stiff stems; very free bloomer.

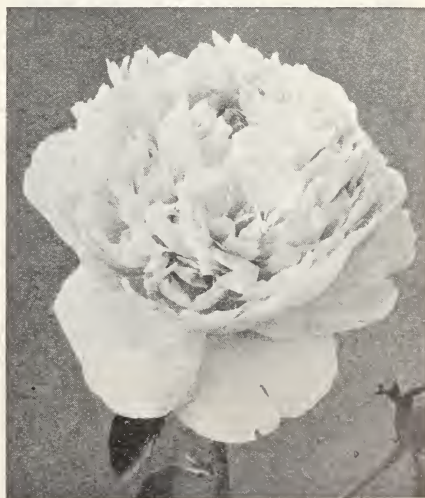
A Brand Division \$2.00.

STRASSBURG (Goos & Koenemann) 8.4. Pink. Rose. Very large bloom; exquisite form. Flowers very large, loosely built, semi-rose. Petals very large, broad, delicate lilac-rose. This German firm has sent out many beautiful peonies, all distinct, but in their entire list this is one of the best. Stock of this variety is very scarce.

A Brand Division \$2.00.

SUZETTE (Dessert 1912) 8.2. Rose. A pretty flower of fine shape. Bengal rose. Slightly tinted carmine purple. Petals interspersed with golden stamens. Strong habit.

A Brand Division \$2.00.



Sarah Bernhardt



Mrs. A. M. Brand

THERESE (Dessert) 9.8. Pink. Very large; somewhat loosely built; long narrow pointed petals. Plant of medium height with strong stems. Usually produces large typical flowers, even on one-year plants, if they are allowed to bloom. Early midseason pink, fading toward the center, and illumined by a golden yellow glow in the depths. A supreme flower for exhibition purposes.

A Brand Division \$2.00.

TOURANGELLE (Dessert) 9.4. Pink. Rose type; late midseason; a vigorous grower, bearing large high-built flowers with cupped centers. Color, delicate pearly white, suffused with shades of delicate salmon and La France rose. In discussing which are the very best peonies, we never hesitate to place this one among them.

A Brand Division \$1.50.

Descriptive List of Brand's New Peonies

BLANCHE KING (A. M. Brand 1925). Deep pink. Peony lovers have been constantly searching for a good, deep, late pink. We have now found this flower in Blanche King. This new variety is of wonderful size, symmetrical and of true rose-type. It is a glowing deep pink that holds its color in the field and also develops into a wonderful show flower. This variety was first exhibited at the National Peony Show held in London, Ont., Canada in 1922. Here it received an award of merit and attracted a great deal of attention. Our stock was limited at that time and we sold more stock of this variety than we should. We did not exhibit this variety again until this season at the St. Paul Show. Here Blanche King was very much in evidence as we had sufficient stock to again make a good showing. Here it was awarded the prize for the best flower at the show and also won first in a class of twenty best dark pink.

A Brand Division \$15.00.

COMMANDER (A. M. Brand 1928). Red. An extra large, high built flower; very compact. A cone-shaped rose type peony. Color, a true self Solferino red. Although late it blooms consistently, which cannot be said of most late varieties. After every other red in our fields was gone this year, we could still go out and bring in excellent flowers of this variety for our show room. A real acquisition to our quality list of Brand's reds.

A Brand Division \$3.00.

ELLA CHRISTIANSEN (A. M. Brand 1925) 9.0. Pink. Although not so deep a pink as Blanche King, Ella Christiansen is so distinct from the delicate pinks in coloring as to be a real acquisition. The flower is exceedingly large, both on the plant in the field and when handled as a cut

VENUS (Kelway) 8.3. Pink. Especially good as a cut flower. Both buds and foliage are clean. Flowers of medium size; compact; pale hydrangea pink. Large petals. Tall growing; a very free bloomer.

A Brand Division \$1.00.

VICTOIRE de LA MARNE (Dessert) 8.2. Red. Mid-season; a large globular flower; brilliant dark crimson with a silver reflex; intense in color, very striking. A loosely formed flower with strong, vigorous stems. No matter what critics may say of the color, this flower is one that always attracts much attention both in the field and show room; it is almost universally admired.

A Brand Division \$1.50.

VICTORY CHATEAU THIERRY (A. M. Brand) 8.9. See page 15.

WALTER FAXON (Richardson) 9.3. Pink. A remarkable flower, at its best in the show room. Cut in the bud, held in a dark cool room for a day or two, then brought into the light—it develops as a flower of wonderful coloring and exquisite beauty. Color, the most vivid of all pinks, the only "real pink" as someone has said. To anyone acquainted with its color, a mere glance over the show room will disclose every vase of this beautiful flower. Flowers medium size, attractive in form. In the fields it does not hold up as well as *Souv. de Louis Bigot*, to which it is similar in color. Unique for show purposes or home decoration.

A Brand Division \$2.00.

WIESBADEN (Goos & Koenemann 1911) 8.2. Semi-rose type. Flesh white and light rose; intermingled golden stamens. Free bloomer.

A Brand Division \$2.00.

W. F. CHRISTMAN (Franklin) 8.8. Pink. A beautiful flesh pink. Flowers of fine form, rose type, very large, and double. Fragrant. A Brand Division \$2.50.

WILTON LOCKWOOD (Shaylor) 8.8. A very loosely built flower of a light rose-pink, illumined throughout by the bright yellow glow from the hidden stamens. A tall midseason variety.

A Brand Division \$2.00.

WINNIFRED DOMME (Brand) 8.3. Scarlet Red. No matter how many good reds you have, you will still want Winnifred Domme. Unlike most reds, it has practically no purple; the nearest scarlet of all peonies. The plant is dwarfish but stems are strong and erect, each producing a single bloom. In the next symposium, we believe this variety will be rated 9.0 or better.

A Brand Division \$1.50.

flower. As a bloomer, it is probably the most profuse of this exclusive list. Petals are long, narrow, and heavily serrated on the edges. The flower first opens cup-shaped, then flat. Irresistibly appealing—Ella Christiansen receives the unbounded praise of every visitor. We like it better every year.

A Brand Division \$10.00.

HANSINA BRAND (A. M. Brand 1925) 9.1. Pink. A flower of beautiful form and great size. Plant very tall and strong; holds the mammoth blooms erect. Color, glistening flesh pink with a salmon reflex shading toward the base of the petals. Very distinct. As it fades, it resembles a perfectly formed specimen of *Solange*, for which it is often mistaken in our show room. Yet *Solange* sometimes fails to develop its flowers at all or produces imperfect bloom, while *Hansina Brand* comes good every year. One of the very best of this particular group.

A Brand Division \$10.00.

HAZEL KINNEY (A. M. Brand 1925) 9.0. Delicate pink. I can still remember this beautiful flower as it appeared on the plant the first time. The form was so superb and the color so pure; it impressed us at once as a flower of great promise, which it since has proved. A great show flower when displayed alongside the very best. True rose type. Color, a delicate, clear hydrangea pink. Medium height plant; clean, light green foliage; late mid-season; a prolific bloomer.

A Brand Division \$10.00.

LAVERNE CHRISTMAN (A. M. Brand) 8.9. Pink. A very large deep pink of varied shadings. The flower resembles a good Therese. The plant is tall and a vigorous grower. This variety received an Award of Merit at St. Paul, Minnesota, in the National Show held during 1923. Very late.

A Brand Division \$12.50.

MRS. A. M. BRAND (A. M. Brand 1925) 9.6. Pure white. When this flower was a two-year-old, we were first attracted with its large, uniform, remarkable white blooms; the clean, thrifty, light green stocks; the luxuriant foliage. Blooms cut in the bud and taken inside develop in remarkable form. Opens a pure, glistening white; pure rose type; a large flat flower with prominent guards and petals of wonderful substance. Received the Gold Metal of the American Peony Society, St. Paul, 1923. Very late.

A Brand Division \$12.50.

MRS. DEANE FUNK (A. M. Brand). Too new to be rated, Pink. Large and peculiarly beautiful in formation. The broad guards and half of the petals turn outward, gracefully downward, then up. Next is a distinct band of golden stamens as in Phyllis Kelway. Lighting up the entire flower, these stamens enclose a rosebud cup-shaped center of large incurving petals. Color, a Walter Faxon pink. Magnificent in the show room; holds up well as a cut flower; beautiful in the field. Among the five or six best seedlings we ever produced.

A Brand Division \$10.00.

MRS. FRANK BEACH (A. M. Brand 1925) 9.0. Ivory White. A very large, flat, perfect rose type flower with long, narrow, lacinated petals of the same lacy effect as in Jubilee. Blooms equally large as Jubilee but borne finely erect on rather dwarfish plants with very strong stems. Much as we admire Jubilee, it is handicapped by a weak stem. Mrs. Frank Beach is a glorified Jubilee. Deep cream, it fades but little even when developed in the field. Like Le Cygne, this variety develops a flower true to type even on a yearling. Blooms profusely as a two-year-old. Received an Award of Merit, American Peony Society, London, Ontario, 1922. Late midseason. Sweetly fragrant.

A Brand Division \$12.50.

MRS. F. A. GOODRICH (A. M. Brand 1925) 9.0. Pink. Our estimation of this peony is constantly rising. Large, deep pink, great broad petals of splendid substance, arranged in the most perfect form, true rose type. Mr. Goodrich chose this flower in our fields to be named for his wife. Received an Award of Merit, London, Ontario, 1922. Very late. Fragrant.

A Brand Division \$15.00.

MRS. HARRIET GENTRY (A. M. Brand 1925). White. One of the most refined flowers in the list. Another white of most perfect rose type. Petals very large, of the purest glistening white, arranged in wonderful perfection. Comparable to a perfect specimen of that wonderful flower, Mirielle. Mrs. Harriet Gentry invariably blooms well with flowers of utmost beauty, while Mirielle gives perfect bloom so seldom that we do not recommend it.

A Brand Division \$15.00.

MRS. JOHN M. KLEITSCH (A. M. Brand 1925) 9.0. Pink. The flower that claimed everyone's attention the third day of the St. Paul-Minneapolis show. On the first day the buds taken to this show just started to open; the second day they were about half out; the third day they were in full bloom—the most remarkable vase of peonies in the whole vast room. Color a violet rose with distinct lavender cast. Petals long, broad, pointed, of great substance. Pleasing and perfect in form—a wonderful flower of true rose type. Very late; fragrant. Took first prize as the best flower in the entire show, 1923 Northwest Peony and Iris Show.

A Brand Division \$12.50.

MRS. ROMAINÉ B. WARE (A. M. Brand 1925) 9.1. Pink. One of the most delicately beautiful peonies ever produced. First selected from the seed bed because of its striking beauty of form. True rosebud effect in the center,

the petals radiating in peculiar fashion to give a pleasing effect to the entire bloom. Returning from the National Show at Boston, I stopped with my good friend Harry F. Little. Mrs. Romaine B. Ware was in full bloom. Of this wonderful flower Mr. Little said, "I think this one of the daintiest of all peonies in its perfect beauty." Exquisitely delicate; medium size; rose type. Medium height plant; profuse bloomer; midseason. Fragrant.

A Brand Division \$10.00.

MYRTLE GENTRY (A. M. Brand 1925) 9.1. Pink. A plant of splendid growth and clean appearance holds the beautiful great flower erect and well above the foliage. Immense flowers of perfect rose form with great broad, nicely rounded petals of wonderful substance. Color, beautiful pink with tints of flesh and salmon. While all of these new peonies have a pleasing odor, this one is the sweetest; the fragrance of a tea rose. Awarded Silver Medal at St. Paul Show in 1923.

A Brand Division \$10.00.

PRESIDENT COOLIDGE (A. M. Brand 1923). Too new to be rated. Pink. Large, beautiful flowers; a rather uniform lavender pink. Irregular petals in unique irregular formation. The prominent guards stand out from the rest of the flower; very attractive from a distance. The entire flower is climaxed by a striking rosebud effect. Blooms carried well above the foliage on strong stems. A late peony, remarkable both as a show flower and landscape variety.

A Brand Division \$10.00.

REV. H. TRAGITT (A. M. Brand 1923). White. Very large, of true rose type. Great blooms of the most perfect form resemble large balls of snow. The dwarf plants with strong stems hold the great white blooms erect. Very sturdy, even growth—planted in rows, they present a remarkable sight when in bloom. So profuse, the blooms cover the whole plant with a solid mass of white. Usually pure white, yet occasionally a faint trace of red shows on an inner petal. Globular in form; great broad snow-white petals of great substance. This variety resembles Le Cygne but it is late while Le Cygne is early.

A Brand Division \$4.00.

VICTORY CHATEAU THIERRY (Brand) 8.9. Pink. A very large flower with immense, broad, evenly arranged, rounded petals of great substance; petals remindful of those on Lady Alexandra Duff. A clear bright pink, gradually fading to a lighter pink. This variety is the earliest of all of these new peonies; and, like Richard Carvel and Judge Berry, is seldom seen in the show room. The plant is of medium height with very strong stems that hold the large cup-shaped blossoms well erect. We consider this variety one of the very best in this list of new ones.

A Brand Division \$10.00.



Myrtle Gentry

You may choose any 10 in the foregoing list of Brand's New Peonies for \$100—the entire list, A TOTAL VALUE OF \$182, for \$150

Good Garden Peonies at Attractive Prices

We have a large surplus of all the following varieties growing in our fields and we must reduce this surplus this fall. We cannot afford to describe each of these varieties in detail in our general list and offer them at prices such as these. However, in collections of three, six, or more, chosen from this list, we will send out splendid BRAND DIVISIONS at exceptionally low prices. Some of these peonies are found in almost every garden, so we leave the choice to you.

Any 3, YOUR CHOICE, for \$1.75;
Any 3, our choice, for \$1.25.

Any 6, YOUR CHOICE, for \$3.00;
Any 6, our choice, for \$2.00.

12 or more, YOUR CHOICE, for \$5 per doz.;
12 or more, our choice, for \$3.50 per doz.

If you make the selection, you will choose your own colors. If we make the selection, we will choose from those of which we have the largest stock but we will give you different colors. Whether you make the selection or have us do it, EVERY VARIETY WILL BE LABELED AND TRUE TO NAME.

- A. J. DAVIS—an early mid-season bright red.
ALBA SULFUREA—a yellowish white.
ALEX DUMAS—pink, interspersed with salmon and white.
AMANDA YALE—pale pink fading to white.
ARCHIE BRAND—a sea-shell pink.
ASA GRAY—mid-season mottled pink.
ATROSANGUINEA—mid-season bright red.
AUG. d' HOUR—solferino red without stamens.
BEN FRANKLIN—very tall landscape red.
BOULE DE NEIGE—mid-season white.
DELACHEI—late mid-season dark red.
DELICATISSIMA—early light pink.
DUCHESS DE NEMOURS—early creamy white.
ELLA W. WILCOX—late, fragrant, deep shell-pink.
ENCHANTMENT—late, mid-season hydrangea pink.
FELIX CROUSSE—deep rose red without stamens.
FESTIVA MAXIMA—fine early white.
FLORENCE NIGHTINGALE—a late fragrant white.
GIGANTEA—rose pink, tipped silvery white. Fragrant.
GLOIRE DE CHAS. GOMBAULT—mid-season pink; profuse bloomer.
GRANDIFLORA NIVEA PLENA—very early white.
JEANNE d'ARC—early mid-season soft pink with salmon and yellow petals.
LADY BERESFORD—blush pink.
LAFAYETTE—salmon pink with silvery reflex.
LA PERLE—soft cup-shaped pink.
LA ROSIERE—creamy white showing band of yellow stamens.
LA TULIPE—fragrant delicate lilac pink. Late.
LIVINGSTONE—very late deep pink.
LORD KITCHENER—very early bright red. Bomb type.
LOUISA BRAND—excellent late blush pink.
MARGUERITE GAUDICHAU—late mid-season shell pink.
MARGUERITE GERARD—flesh pink showing yellow stamens.
MAUD L. RICHARDSON—tall, lilac rose.
MIDNIGHT—early deep maroon.
MLLE. CHENOWOSKY—very late deep pink.
MME. BOUQUET—late dark red.
MME. CALOT—early mid-season light pink.
MME. CROUSSE—a splendid mid-season creamy white.
MME. DE VERNEVILLE—early white.
MME. DUCEL—early mid-season deep pink.
MME. FOREL—glossy pink with silvery reflex. Very fragrant.
MME. GEISSLER—large deep pink.
MOOSE HULL—fragrant, variegated light pink.
MRS. CAREW—silvery blush pink, with carmine edges.
OCTAVIE DEMAY—a very early flesh pink. Good cut flower. Fragrant.
OLD SILVER TIP—deep rose red with silver edge. Profuse bloomer.
PHILOMELE—guard petals violet rose surrounding ball of yellow petals.
PIERRE DESSERT—early dark red.
PIERRE REIGNOUX—early mid-season rose red.
PRES. ROOSEVELT—a deep bluish red.
PRINCE OF DARKNESS—early rich dark maroon.
RACHEL—a good bright red.
RUBRA SUPERBA—a very late red.
RUTH BRAND—a good early pink.
SHENANDOAH—a very late fragrant red.
SISTERS ANNIE—a shell-pink showing yellow stamens.
UMBELLATA ROSEA—a very early light pink. Fragrant.
WM. PENN—a very fragrant deep late pink.

NOTE:—If you are interested in a large planting of one or more varieties, write us for special prices. Many of these sorts are most excellent for the cut flower trade; and, if we can ship in lots of twenty-five or more to a kind, we can make still lower prices.

The High **4**

4 Outstanding Peonies
4 Different Colors
4 Highest Ratings

Each One Supreme In Its Own Respective Color

IF PURCHASED SEPARATELY . . . A TOTAL VALUE OF \$12.00

Collection Price \$10.00 You Save \$2.00

The highest rated white, the highest rated red, the highest rated pink, and the highest rated cream (or ivory white) . . . four of the world's best peonies . . . ALL FOR \$10.00:

- Le CYGNE (Lemoine) 9.9.** White. True rose type. A creamy white with no tracings of color. Strong, medium height stems. Large blooms, delightfully fragrant. Early midseason. The highest rated of all peonies. **\$3.00**
- PHILIPPE RIVOIRE (Riviere) 9.2.** Red. Very fine bright crimson. Beautiful form; splendid growing habits. A fine show flower. Its color is the most distinct and uniform of all the reds. Midseason. **\$5.00**
- THERESE (Dessert) 9.8.** Pink. Very large blooms with long, narrow, pointed petals. Early midseason pink, fading toward the center and illumined by a golden yellow glow in the depths. A supreme flower for exhibition **\$2.00**
- SOLANGE (Lemoine) 9.7.** A favorite variety of unusual coloring; a creamy white with a suffusion of buff and pale salmon-pink. When well grown the form of the flower is perfect. This variety is invariably in the prize-winning classes. **\$2.00**

Good Single Peonies

Few people are familiar with the beauty of the single peony. When we see a good one, we often think it is prettier than the doubles because of its delicacy and wonderful substance. For both house decoration and garden effects, the single peony has an artistic value different from the double form. The main bud opens first; but before it has passed its prime the lateral buds also open, making the plant a mass of bloom. The singles hold well both in wind and sun. They survive heavy winds and

rains apparently better than the doubles. They come into bloom at least a week before the earliest doubles. This lengthens the peony blooming season. In the past, many have hesitated to order the singles because they were expensive, and they could buy the more massive doubles for less. But we have greatly reduced our prices on singles, having multiplied our stocks, and we now offer the very best of the single varieties at prices within the means of all.

Our List of Singles

ALBIFLORA (The Bride) (Dessert 1902) 8.4. White. Very large. White with long yellow stamens. Tall, fragrant, very early. Free blooming in clusters. A third larger bloom than the ordinary Albiflora. Identical with La France.

A Brand Division \$1.00.

DARKNESS (Brand 1913) 8.2. Red. Large; very dark, maroon with darker markings in lower half of petals, surrounding a bold cluster of golden stamens. Tall, strong stems. Good bloomer. Very early. Ideal for cut flowers because of its charming blend of color and delightful fragrance.

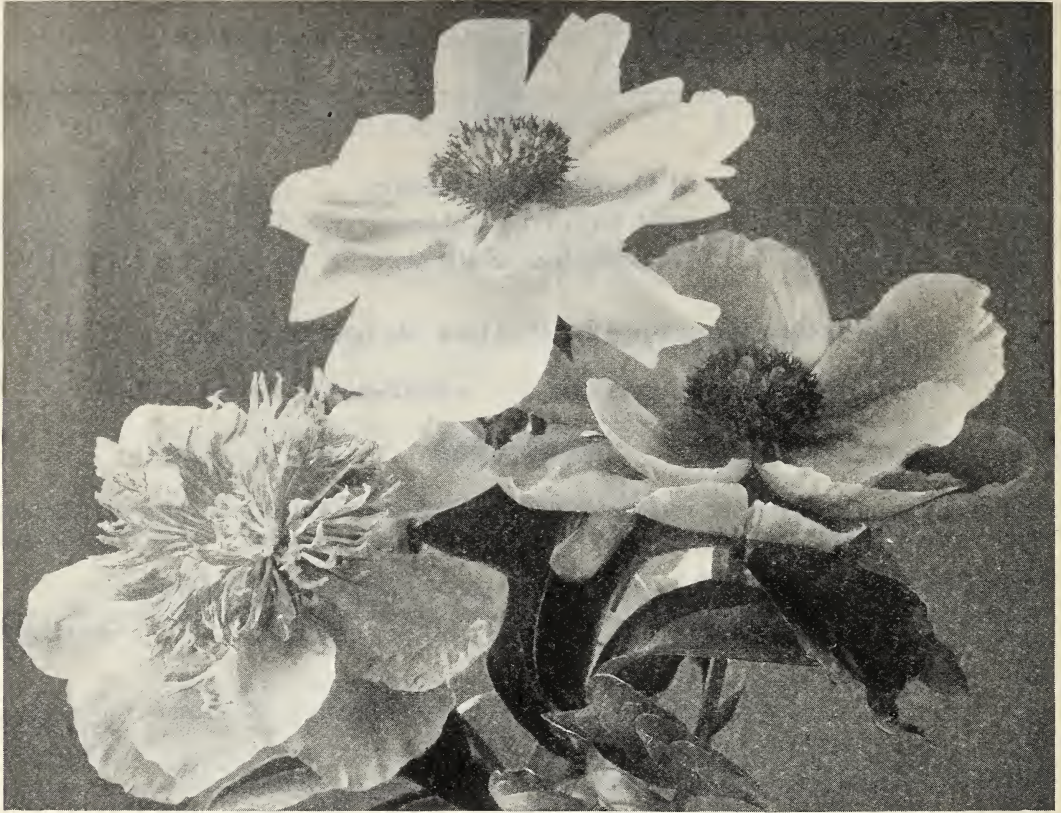
A Brand Division \$2.00.

DEPARTING SUN. Red. There are two peonies of this name; one a single, the other a Japanese. This is the single. A bright attractive red. The petals, of great substance, hold up well after cutting. Many singles do not hold their shape well after cutting but Departing Sun does. Very striking.

A Brand Division \$3.00.

EDITH WEST (Brand 1920). White. Resembles Albiflora but comes into bloom later. The flower is not quite as large but the petals have more substance than Albiflora.

A Brand Division \$2.00.



Toro No Maki (Jap.) Albiflora (Single) Harriet Olney (Single)

FLANDERS' FIELDS (A. M. Brand 1928). Red. Eight years ago in one of our seedling beds of many varieties, we noticed a most conspicuous red. Even from twenty rods' distance, this brilliant color stood out from all the others. The next season it was just as noticeable. The second fall we lifted and divided the plant for a three-year test, and last season completed its second three-year test. Every year, in every way, it has proven a splendid flower. A single of the most brilliant red. Two rows of petals surround a large prominent center of golden stamens. Petals of great substance stand out flat; rich and velvety in appearance.

A Brand Division \$5.00.

HARRIET OLNEY (Brand 1920). Pink. Flowers large; petals long, broad and shapely. Color, a soft rose combined with attractive prominent yellow center. Medium length stems, perfectly straight, hold the large flower erect. Midseason.

A Brand Division \$2.00.

KRINKLED WHITE (A. M. Brand 1928). White. First noticeable in the bud which resembles the bud of a pale pink tulip just ready to burst. The bud is comparatively small and beautiful in effect. As it opens, it expands into a large flower with great broad pure white petals, crinkled like crepe paper. A most beautiful effect. Stems tall, straight, slender but strong; clean light green. Splendid both as a show flower and field flower. Award of merit, Des Moines National Show.

A Brand Division \$5.00.

LA NUIT (Shaylor) 7.7. Very rich dark carmine with an intense velvety sheen. Medium height stems, slender but erect. Medium size flowers; very pretty; they last well in the sun.

A Brand Division \$1.00.

LE JOUR (Shaylor) 8.6. White. Very large; in fact the largest single white peony. Purest white with great heavy petals; center, an immense tuft of golden stamens. Strong upright plant holds the great blooms well erect

when the side buds have been disbudded. This and **Krinkled White** are the two best white singles.

A Brand Division \$2.00.

L'ETINCELANTE (Dessert) 8.4. Dark Pink. Very large flowers; decidedly cup-shaped; great broad petals of deep bright pink, heavily margined with silver; a large center of bright yellow stamens. Tall thrifty plant, wonderful as a landscape variety.

A Brand Division \$1.50.

MADLINE GAUTHIER (Dessert) 8.5. Light Pink. Early midseason. Dessert is noted for his Singles. This is a good specimen; a beautiful flesh pink of most perfect form.

A Brand Division \$3.00.

MAFEKING (Kelway) 8.2. Very large; midseason; smooth cupped guards of dark ruby red; center a great tuft of golden stamens with ruddy filaments; carpels nearly white. Wild mint-like fragrance. Tall; free blooming; bright dark red.

A Brand Division \$3.00.

MARGUERITE DESSERT (Dessert 1913) 8.5. Pale pink. Medium size flower. Petal similar to the double, **Asa Gray**. Central tuft of golden stamens. Very desirable.

A Brand Division \$3.00.

MELLEN KNIGHT (Brand 1920). Red. Tall, straight growing; strong enough to hold the flowers well up. Petals long, narrow, and evenly rounded on the edges, giving a beautiful effect both at close examination and from a distance. Color, a bright, rich crimson. Extra good.

A Brand Division \$2.00.

PERLE BLANCHE (Dessert) 8.4. Large, early, mid-season. Very valuable for landscape effect because of its erect habit and lovely white flowers in beautiful contrast with an immense central cushion of golden stamens.

A Brand Division \$2.00.

PRESIDENT LINCOLN (A. M. Brand). Too new to be rated. The great red single. Of the many single reds that we have tested out, this is unquestionably the best. A tall variety with strong, stout stems. Flowers large for a

single; held straight up. Two rows of brilliant red petals, of most perfect form and the greatest substance, surround a very striking center of rich yellow stamens. Holds its color well in the sun.

A Brand Division \$10.00.

PRIDE OF LANGPORT (Kelway 1909) 8.9. Pink. An immense flower of brilliant, soft peach-pink. Wonderfully beautiful; retains its color in the sun almost a week after it opens; the finest light single.

A Brand Division \$3.00.

AKASHIGATA (Japan). Bright rose. A new Japanese variety not yet rated. After growing it about five years, we consider it very satisfactory. Guard petals a bright rose, surrounding a heavy center of filamental petals of bright pink bordered with gold.

A Brand Division \$2.00.

AKULA. A rich dazzling carmine with center petaloids heavily bordered gold.

A Brand Division \$2.00.

ALMA (Shaylor) 8.5. Pink. Guard petals a delicate pale pink, enclosing a mass of incurved petals.

A Brand Division \$1.00.

ALTAR CANDLES (Pleas) 8.0. Flesh Pink. Very nicely shaped; an evenly formed row of delicately colored flesh pink petals, surrounding a center of completely transformed narrow filamental petals which open cream-white. Very floriferous; one of the most dependable Japanese peonies.

A Brand Division \$1.50.

AMA-NO-SODE (Japan) 9.2. Very large. Midseason. Flower has two rows of long widespread petals of rose-pink, forming a saucer-like cup about an immense center of long yellow staminodes with flattened, crinkled tips, stained with rose.

A Brand Division \$5.00.

ANTWERPEN. Carmine pink. Flower of enormous size. Two rows of petals. Certificate of Merit Antwerp 1920. A beautiful new Japanese peony from Holland. Wonderfully fine.

A Brand Division \$25.00.

EMMA. Dark lilac pink. Two rows of perfectly shaped round petals.

A Brand Division \$3.00.

EVA. Bright light lilac crimson. Very lovely shade. Large round petals. Free bloomer. Unsurpassed for landscaping.

A Brand Division \$3.00.

EXQUISITE (Japan 1912) 8.9. White. A large row of pure white guard petals surround a larger center of white filamental petals bordered with yellow. A splendid variety.

A Brand Division \$3.00.

FLAMBOYANT (Japan) 8.5. Violet Crimson. Large. Very evenly shaped petals. Color, just a trifle lighter shade than King of England. Center filled with partially transformed staminodes, light yellow edged with gold and red. Also known as Kamenno-Kerogoma.

A Brand Division \$1.50.

FUGI-NO-MINE. Opens a very pale pink and changes immediately to a pure white. Center of very bright yellow petaloids which are straight and form a perfect half globe. Late and very striking.

A Brand Division \$1.50.

FUJI-ZOMO-GORONO (Japan). A large delicate pink with large, well formed petals surrounding a great center of pure gold staminodes.

A Brand Division \$3.00.

FUYAJO (Japan) 9.2. The highest rated dark Japanese peony. Rich, dark, mahogany red petals surround a full center of broad petaloids of the same dark rich color as the outer petals.

A Brand Division \$3.00.

GEISHA. A clear bright red. Two rows of petals. Compact, pure yellow center. Tall stems.

A Brand Division \$10.00.

HAKODATE. Pure white with a great heart of gold. Large flower perfectly shaped. A wonderful variety.

A Brand Division \$25.00.

HENRI POTIN (Doriat 24). A rich deep china pink shaded carmine. Rich shadings of salmon.

A Brand Division \$2.00.

ISANI GIDUI 9.3. Very large. Midseason. Two rows of very broad rounded guard petals of pure white. Center, a rounded mass of thin staminodes of rich buff yellow. Considered the most beautiful white Japanese peony.

A Brand Division \$5.00.

JOSEPHINE. Light carmine red. Large, pure yellow center. Guard petals, round and incurved. Tall straight stems. Very showy variety.

A Brand Division \$2.00.

SCHWINDT (Goos & Koenemann). Not yet rated. Pink. Blooms in clusters. Large silvery pink, beautifully formed. Excellent for landscaping. Stock scarce.

A Brand Division \$1.50.

WATTEAU (Goos & Koenemann). Not yet rated. White. Large snow-white guard petals. Center flesh with a mass of golden stamens. Resembles Albiflora, the Bride, but comes into bloom much later.

A Brand Division \$2.50.

Japanese Peonies

KAMENO-KEROGOMA. This is the same as Flamboyant.

KING OF ENGLAND (Kelway) 8.6. Red. A rich uniform shade of deep red. Large, uniformly rounded petals of great substance. Center a large tuft of long self-colored petaloids, prominently edged with gold.

A Brand Division \$3.00.

MEIGETSUKO (Moonbeam). Bright lilac rose. Two rows of stiff petals. Pure yellow center.

A Brand Division \$2.00.

MIKADO 8.6. The peony shown at the Chicago World's Fair in 1893 by the Japanese Government. A rich red with long rounded petals of brilliant red surrounding a great dome of golden staminodes. Exceedingly brilliant.

A Brand Division \$1.50.

MR. G. F. HEMERIK. A very fine pink variety. Immense flower. Two rows of petals, with a great heart of thick petaloids. A new Japanese peony from Holland, showing great merit.

A Brand Division \$15.00.

MRS. MAC (Franklin). A splendid Japanese peony brought out by Mr. Franklin. We have tried it out some ten years and like it exceedingly. Very strong plant, covered with delicate pink typical Japanese blooms, flushed and flecked with deeper tones of pink.

A Brand Division \$2.50.

NIPPON BEAUTY (Auten). Dark maroon red throughout. This good Japanese at the National Peony Show at Peoria, Illinois was awarded the \$100 prize offered by the Brand Peony Farms for a new Japanese worthy of great merit.

A Brand Division \$50.00.

PRINCESS DULEEP SINGH (Kelway) 8.7. Broad guard petals of a soft shade of deep wild rose. Center a spherical tuft of rose and gold staminodes.

A Brand Division \$3.00.

RASHOEMON (Japan) 8.7. One of the best of the Japanese varieties for landscape planting, because of the clean beautiful appearance of the plant itself. Large blossoms. Color a deep rose red. Center prominent cream yellow.

A Brand Division \$3.00.

SOME-GA-NOKA (Japan) 9.0. The highest rated bright red Japanese peony. Guards, a rich dark brilliant red. Center, a ball of golden yellow staminodes, partially transformed and streaked red.

A Brand Division \$2.00.

SOSHI. Clear dark red. Two rows of round petals which do not spread. Petaloids, yellow, edged red. The color neither burns nor fades in the sun.

A Brand Division \$4.00.

SURUGU. Pure red. Two rows of rounded petals which hold their form well as the flower ages. Thick yellow petaloids. A beautiful, neat flower. New.

A Brand Division \$5.00.

TAIHO (Japan). A new variety from Japan not yet rated. Broad guard petals of clear, delicate pink with a central tuft of creamy yellow staminodes.

A Brand Division \$1.00.

TOKIO 8.9. Large to very large. Midseason. Cupped, waving guard petals of dull rose-pink; center composed of large, loose staminodes, narrow at the base with wide tips tinted pale yellow and stained pink on the upper half, with buff edges. Very tall. Dark, broad foliage.

A Brand Division \$3.00.

TORO NO MAKI (Japan). 9.0. White. One of the finest of all the Japanese peonies. It comes into bloom midseason. A double row of lilac white guard petals surround a center of amber yellow. A very striking variety in the field and as a cut flower.

A Brand Division \$5.00.

TORPILLEUR (Dessert 1913) 8.0. Rose Red. A large fine flower, held rigidly erect on long stiff stems. The guard petals are deep rose red with center petals of the same color tipped with cream. A splendid variety, distinctly different from all other Japs.

A Brand Division \$2.00.



Iris in the Border

Selected Iris

Why the Iris is so popular

Nowadays every garden must have iris. There are many reasons for the growing demand. In the first place, iris are as beautiful as the rarest orchids; their form perhaps more distinctive, their coloring more varied. During recent years, many new varieties have appeared with wonderful new combinations of color. One may now enjoy all shades; from the palest lavender to the deepest purple, from the most delicate cream to the deepest gold. With pure white, delicate blue, deep blue, pink, rose, maroon and bronze—now, more than ever, the flower justifies its name, Iris, "The Rainbow."

There are also practical reasons why the iris is so popular. It is inexpensive. New varieties are produced so quickly and they multiply so rapidly that even the recent varieties do not long remain expensive. Large stocks of the good old sorts are very cheap. Moreover, iris blooms quickly. Plants set out this year will blossom next, and they soon form large clumps. The rules to follow are few and easy:

CULTIVATION. Iris should be planted in a sunny location; and in dry, well drained soil. Unlike the wild flag, garden iris cannot stand water around the roots. Do not plant deep. The bulb or rhizome should be just below the surface. Spread out the roots and pack the soil around them. No fertilizer should touch the rhizomes. A very little, well-rotted manure may be applied to the surface of the ground. Bone meal and finely ground limestone are good.

Iris soon forms big clumps with masses of rhizomes and roots which are likely to rot. It is hard to keep grass out of these clumps. That is why iris should be taken up,

divided, freed from grass roots, and reset once in four or five years. The best time to plant or reset is just after the blooming season. July and August are probably the best months, but iris may be planted any time of the year when not in bloom or when the ground is not frozen.

SUGGESTIONS. The sunny side of a shrubby hedge is a good place for iris. Unlike the peony, it is not likely to be robbed of moisture and food by the larger plants. It is especially beautiful with lilacs or *Spirea Van Houttii* as a background. All these bloom at once. The colors of the lilac harmonize with the iris, and both contrast beautifully with *Spirea white*.

As suggested in connection with peonies, iris is a good companion for peonies in a hedge which borders a walk or drive. First the two flowers may be alternated; later, when the peonies need all the space, the border may be widened and the iris moved to the front.

Clumps of iris are useful to give color in a border of herbaceous plants. After the blooming season the ragged tops of the leaves may be trimmed off so the foliage of surrounding plants will partially cover them.

For large grounds, extensive plantings of iris give wonderful effects. It may be planted in beds as borders of walks, drives or pools. Beds may be arranged also to form an iris garden—a month or more of joy.

Best results are obtained by planting groups of one variety together, so arranged as to harmonize with each other. For this reason, we offer a very low price on three of a kind.

5% Discount on all orders, accompanied by cash, received or before August 15th. This discount does not apply to special offers or collections.

Our Iris List

AKSARBEN (J. Sass). A striking velvety plicata, with soft yellow ground, prominently veined, Prussian-red.
Each 25c; 3 for 60c.

ALABASTER (Andr.). New, snow-white, fine form, wonderful texture. Edges slightly ruffled; beard nearly white with shadings of yellow. 36 inches.
Each 50c; 3 for \$1.25.

ALBERT VICTOR (Barr). Standards soft blue; Falls beautiful lavender. Large and fine. 40 inches.
Each 25c; 3 for 50c.

ALCAZAR (Vilm). Standards light bluish-violet; Falls deep reddish-purple. 42 inches.
Each 25c; 3 for 50c; 12 for \$1.25.

ALLURE (Murrell 27). 40 in. An attractive, distinct new color. Canary-yellow, overlaid with violet pink. Silver medal English Iris Society.
Each \$2.00.

AMBASSADEUR (Vim). In richness of coloring, fine form, and growing habits—truly one of the most beautiful of all irises. Standards smoky, reddish violet. Falls dark velvety purple-maroon. Very rich.
Each 25c; 3 for 60c; 12 for \$2.00.

AMBER (Dykes). Called the best yellow iris to date. Uniform citron-yellow; delicate bronze markings on the haft.
Each \$1.00.

AMBIGUE (Vilm). Standards a beautiful smoky red; Falls a velvety, reddish brown. A fine variety, strong-growing and free-flowering. 30 inches.
Each 25c; 3 for 60c.

ANNA FARR (Farr). Large flower with broad petals of good substance. Standards and Falls purest white flushed violet blue. Most beautiful.
Each 25c; 3 for 60c; 12 for \$2.00.

ANN LESLIE (Sturt. 1918). Standards white, faintly flushed rose; Falls red dahlia-carmine—a distinct and unusual color; decided orange beard. 27 inches.
Each 25c; 3 for 60c; 12 for \$2.00.

ANN PAGE (Hort). A beautiful lovely pale blue, rated one of the best in its color. Long, conical Standards of a uniform light wisteria violet. Falls Bradley's violet. Resembles Crusader.
Each 25c; 3 for 60c; 12 for \$2.00.

APACHE (Farr). A new and interesting color, Indian Red. Very taking and distinct. Standards coppery purple; Falls dark crimson-brown with heavy light brown reticulations on the haft. 20 inches. Strong growers.
Each 25c; 3 for 60c; 12 for \$2.00.

APHRODITE (Dykes). A clear bright yellow pink self; no veining to mar its beautiful color. Best of all so-called pink irises. 4 ft.
Each \$1.00.

ARCHEVEQUE (Vilm. 1911). Standards deep purple-violet; Falls rich, deep velvety violet—an unusual and rich color effect rarely found in irises.
Each 25c; 3 for 60c.

ARGYNNIS (Williamson). Granted an award of merit by American Iris Society. A tall true variegata, distinct in coloring. Standards strontian-yellow, narrowly margined Aniline yellow; Falls a solid, dark violet-carmine. Late midseason. 40 inches.
Each 35c; 3 for 75c.

ARLINGTON (Simpson). 36 in. Fine large flowers of rich red purple effect. Good substance and perfect form.
Each 35c; 3 for 75c.

ASIA (Yeld). Standards pale lavender; Falls light violet purple. Both standards and falls of immense size. Taken all in all, this is a wonderful iris; many say it's the finest grown.
Each 25c; 3 for 60c; 12 for \$2.00.

AUREA (Jacques). Standards and Falls, rich chrome-yellow; large flowers of perfect form. The best standard pure yellow. 24 inches.
Each 25c; 3 for 50c; 12 for \$1.25.

AURIFERO (Mohr-Mitchell). Standards palest lavender; Falls flushed rosy-lavender. Tall; brilliant golden beard; large flowers. 42 inches.
Each 50c.

BALDWIN (H. P. Sass 27). 40 in. A fine large flower. A beautiful violet-self much admired.
Each \$1.50.

BARTON HARRINGTON (Fryer). Standards bright golden yellow; Falls brown tinged with red, bordered bright golden yellow. Fragrant.
Each 25c; 3 for 50c; 12 for \$1.25.

BEAU IDEAL (Sass). A striking plicata. White bordered rich violet. 36 inches.
Each 25c.

BEN BOW (Bliss). Dark bluish violet. Self color. 36 inches.
Each 50c; 3 for \$1.00.

BLUE BOY (Foster). Standards and Falls a rich purple with blue beard. 15 inches.
Each 25c; 3 for 50c; 12 for \$1.25.

BLUET (Stur). Standards and Falls a blue tone. Beautiful garden effect. 24 inches.
Each 25c; 3 for 50c; 12 for \$1.25.

BRANDYWINE (Farr). Generally regarded the best of all Mr. Farr's irises. Standards and Falls, light hyssop-violet; entire flower lit up by a prominent bright orange beard. Large flower of fine form.
Each 25c; 3 for 50c; 12 for \$1.25.

BRILLIANT (Dykes 24). A late brilliant red toned iris that is very fragrant.
Each 35c; 3 for \$1.00.

BRITONESS (Dykes 28). 30 in. A very large primrose yellow iris. As large as Moonlight. In the collection that won the challenge cup in England, also the English Iris Society medal.
Each \$3.50.

BRONZE SPHYNX (Danenhauer 1929). A large and beautiful ruffled bronze with base of Falls heavily reticulated brown. Standards cupped and beautifully frilled. A wonderfully profuse bloomer. Stems of strong medium height, covered with many blooms open at once.
Each \$2.00.

BRUNO (Bliss). A Dominion Seedling. Very large blooms; beautiful form; great substance. Standards, light purple with yellow flush at the base; Falls, rich velvety deep violet. A preferred variety, now much used in producing new irises.
Each \$1.00; 3 for \$2.00.

BUTO (H. P. Sass 26). 30 in. A very dark rich royal-purple iris of perfect form and great size. Very rich in coloring.
Each \$1.00.

CAMELLIARD (Sturt. 27). 48 in. A distinct soft-yellow blend, overlaid wine. Late. Very large flowers.
Each \$2.00.

CANDLELIGHT (Andrews). New. One of the most outstanding irises produced in recent years. Large flowers; pale pinkish lavender; illuminated by a rich golden glow. Very vigorous. We heartily recommend it. 48 inches.
Each \$1.00.

CAPRICE (Vilm.). 30 inches. Standards and Falls light purple blending to soft lavender at base of petals. Very fine.
Each 25c; 3 for 50c; 12 for \$1.25.

CARDINAL (Bliss). One of the most superb of the Dominion family. Standards, lavender overlaid with rose; Falls, rich raisin purple, very broad and rounded. Most striking; wonderfully rich.
Each \$1.00; 3 for \$2.00.

CAROLINE E. STRINGER (Sass). Standards and Falls, delicate light pink. Large flowers; petals beautifully frilled; bright yellow beard. 33 inches.
Each 50c; 3 for \$1.00.

CECILE MINTURN (Farr). Standards and Falls uniform shade of rose; light beards. Large.
Each 25c; 3 for 50c; 12 for \$1.25.

CELESTE (Lemon). 30 in. Standards and Falls pale verbena-violet with tracings of pure white throughout; beard white and prominent. A very delicate flower in appearance. A strong grower.
Each 25c; 3 for 50c; 12 for \$1.25.



A Suggestive Border Planting for a Drive to the Garage

CHALLENGER (Jacob Sass 1930). Standards very large, overlapping, dark purple; Falls dark blackish violet. Flaring. White beard, tipped orange. One of the very largest intermediates. New.

Each \$2.00.

CHESTNUT (Jacob Sass 1930). Standards cinnamon drab, ruffled; Falls cream, faintly dotted petunia violet with brown stripes on a yellow haft. A fine ruffled blend. New; distinct.

Each \$1.50.

CHIEF (Jacob Sass). A large royal purple intermediate. Late. 22 inches.

Each 50c.

CHURCHMOUSE (H. P. Sass 29). 36 in. A new and very distinct coloring among iris. A hays-brown self. Very pretty. Nothing like it.

Each \$1.00; 3 for \$2.00.

CINNABAR (Wmsn. 28). 42 in. A splendid large flower of very rich tones. A rich velvety red. One of the most striking irises in our garden this year.

Each \$1.50.

CLARIDAD (Mohr). 36 in. One of the bearded irises. Fine form and great substance.

Each 75c.

CLEMATIS (Bliss). Standards and Falls light lavender violet. Clematis-like flower. 30 inches.

Each 50c.

CLUNY (Vilmoren) 8.6. An early, very tall variety, with large flowers. Standards wisteria-violet; Falls delicate, bluish-violet. Of the finer irises this is one of the most dependable in this climate.

Each 25c; 3 for 50c; 12 for \$1.25.

COLONOL CANDELLOT (Millet) 8.0. A medium sized iris with flowers of a very striking color. Standards bronze, splashed with reddish lavender; Falls dark velvety, crimson, slightly reticulated with white at throat. 33 inches. An iris with lots of red in it.

Each 25c; 3 for 50c; 12 for \$1.25.

CONCHOBAR (Bliss 26). 48 in. A flower of great size, tall and well branched. Standards lavender, overlaid bronze; Falls rich plum-purple.

Each \$2.00.

COPPERSMITH (Shull). Handsome. Large flowers on tall stems. Standards crimson-purple; Falls Dahlia carmine. General appearance, rich coppery red. 42-inch.

Each \$1.00.

CORONADO. A beautiful iris very similar to Asia but earlier and a bit more reddish in tone.

Each 50c.

CORONATION (Moore 27). 36 in. A large deep yellow of splendid form and substance.

Each \$1.00.

CORRIDA. One of the best of the light blue irises for massing. Rather a deep, light blue; almost a self which we like very, very much.

Each 25c; 3 for 50c; 12 for \$1.25.

CRUSADER (Foster). Standards a light shade; Falls a deeper shade of violet blue. 40 inches.

Each 25c; 3 for 50c; 12 for \$1.25.

DALILA (Denis). Standards pale flesh pink; Falls rich reddish crimson, shaded purple. Yellow throat, blotched brown; orange beard. Distinct and very effective.

Each 25c; 3 for 50c; 12 for \$1.25.

DAMOZEL (Mor.). Very fine shaped plicata. Standards blue-lavender etched; Falls white lavender, veined border. 34-inch.

Each 25c; 3 for 50c; 12 for \$1.25.

DEJAZET (Vilmoren) 8.3. The flowers are very large, distinct and very rich in coloring. Plant grows to about 18 inches with short stems heavily covered with bloom. Standards ruffled, smoky rose-orange; Falls pure reddish-violet.

Each 25c; 3 for 50c; 12 for \$1.25.

DIMITY (Bliss 1919) 8.3. Standards white, slightly veined mauve; Falls wide and long with finely veined lavender on the upper half. 36 inches. An iris that is different.

Each 25c; 3 for 50c; 12 for \$1.25.

DISTINCTION (Cay. 25). 32 in. A handsome outstanding uniform soft rose. New.

Each \$1.50.

DOLLY MADISON (Williamson). Flowers very large, often 4½ inches high by 5 inches wide. It is a seedling of Lent A. Williamson and carries the good sturdy qualities of that parent together with even greater size. In going through a most complete collection of the best iris last year I think this was our favorite. An immense mauve-lilac pink of most outstanding quality. Without question one of the best new things.

Each \$1.00.

DOMINION (Bliss). We paid \$45.00 for our first rhizome of this iris which we never regret. The first distinct advance in many years toward better iris. Standards bluish-violet; Falls rich Indigo-purple. Most perfect form, great size, gorgeous coloring.

Each \$1.00.

DORA LANGDON (Bliss) 8.1. Well branched variety. 30 inches. Standards delicate lavender with slight suffusion of yellow; Falls intense red-lilac, fading to yellow on the edges and at the base.

Each 25c; 3 for 50c; 12 for \$1.25.

DOROTHEA K. WILLIAMSON (Williamson). One of the very finest of the beardless sorts. A rich velvety blue-purple. Very distinct; it should be in every garden. Likes more moisture than bearded iris.

Each 50c.

DR. CHAS. H. MAYO (Fryer 24). 40 in. This is Mr. Fryer's best iris. A very early variety with distinct pink tones which make it most desirable.

Each 50c; 3 for \$1.00.

DREAM (Sturtevant) 8.5. A very graceful tall-growing variety; vigorous growth; good bloomer. A uniform soft violet. Most delicate and pleasing color. Well branched stalk, 40-inch.

Each 25c; 3 for 50; 12 for \$1.25.

DR. HIDERSHIDE (Pfeiffer). A fine dark blue, almost uniform, heavily branched. Shows up wonderfully in mass either in field or inside.

Each 25c; 3 for 50; 12 for \$1.25.

DUCHESS SARAH (Yeld). A new iris of much promise. A beautiful violet.

Each \$1.00.

DUKE OF YORK (Perry). A flower of great size; vigorous grower. Branched stems over 4 feet high. Standards broad, cupped, bluish lavender; Falls drooping, same color, lit up by a bold orange beard.

Each 25c; 3 for 50c; 12 for \$1.25.

EDGEWOOD (Hall 26). 45 in. A soft pink and pale yellow bi-color; good substance and nicely branched; very nice.

Each \$1.50.

EDITH SCOVILLE (Pfeiffer 1928). Self color. Standards and Falls, a rich uniform purple wine color; beard bright yellow. Very hardy, thrifty, and profuse bloomer. Splendid in field and show room. 30 inches.

Each 25c; 3 for 50c; 12 for \$1.25.

E. H. JENKINS (Bliss). A splendid flower both in the garden and show room. Standards light violet; Falls litho purple, shading lighter toward the edges. Low, well branched; many flowers in bloom together. 45 inches.

Each 35c; 3 for 60c.

EL CAPITAN (Mohr). 48 in. One of the largest and tallest of irises. A beautiful violet. Does exceedingly well in California.

Each \$1.00.

ELIZABETH EGELBERG (Egelberg). We have been greatly impressed with this beautiful new variety. Flowers of enormous size; one stem is enough for a vase. The general effect is pink. A vigorous grower. We heartily recommend it. 48-inch.

Each \$2.50.

ELSINORE (Hall). A charming flower of primrose-yellow, bordered with purple. 36-inch.

Each \$1.50.

EUPHONY (H. Sass 29). Beautiful blend of chamois yellow. Ruffled flowers on well branched stems. A delightful flower.

Each \$1.00.

EVADNE (Bliss). A very nice iris with rose-violet Standards and red Falls. Good.

Each 35c; 3 for \$1.00.

EVENING GLOW (Tuthill). Although a recent introduction, we feel this variety has great promise. The general effect is pale lavender-blue. Heavy orange beard. Excellent foliage. 36-inch.

Each 25c; 3 for 50c; 12 for \$1.25.

F. B. SCHERMERHORN (Pfeiffer). A lavender blue self. Another fine new iris that shows up unusually well inside when displayed in masses.

Each 25c; 3 for 50c; 12 for \$1.25.

FLAMMENSCHWERT (G. & K.). Largely regarded as the best of the blended bicolors, even better than Marsh Marigold, The Inca or Maori King. Standards a bright Empire yellow; Falls rich velvety deep brown; intense yellow border. Brilliant; very striking.

Each 25c; 3 for 50c; 12 for \$1.25.

FOLKWANG (Goos & K.). Standards light bright pink; Falls Claret-red with brownish-yellow veinings. A wonderful blending of colors. One of the very best of the many really good irises sent out by this famous firm.

Each 50c; 3 for \$1.25.

FRA ANGELICA (Vilmoren). A new iris from Vilmoren with beautiful sunset tints. Striking.

Each 50c; 3 for \$1.25.

FREIDA MOHR (Mohr). Good enough in the originator's opinion to bear the name of his wife. A beautiful flower both in form and color. Unusually tall with clean foliage; ideal for either mass planting or for specimen flowers. A pink bicolor. Standards a light pinkish violet; Falls a deep lilac rose. 50-inch.

Each \$1.00; 3 for \$2.50.

FRITJOFF (G. & K.). General effect, light purple. Standards lavender; falls soft purple. Tallest of the intermediates.

Each 25c; 3 for 50c; 12 for \$1.25.

FRO (Goos & K.). A brilliant rich colored variegata; one of the best in its color class. Standards Empire Yellow; Falls rich velvety Bordeaux; narrow yellow border. 24-inch.

Each 25c; 3 for 50c; 12 for \$1.25.

GAULOIS (Cay. 26). Golden yellow Standards suffused with bronze; Falls bordeaux red. Much liked.

Each \$1.00.

GEORGIA (Farr) 8.3. General effect pink. Standards and Falls phlox purple; light center; white beard tipped orange.

Each 25c; 3 for 50c; 12 for \$1.25.

GEO. TRIBOLET (Williamson). A magnificent iris with deep violet Standards and velvety red purple Falls. 40 inches. For real quality and richness of color this is an iris hard to beat.

Each 50c; 3 for \$1.25.

GEO. YELD (Perry). Standards light apricot, shaded rose; Falls rose-crimson, edged buff. 40 inches. A most beautiful and attractive iris.

Each 25c; 3 for 50c; 12 for \$1.25.

GERMAINE PERTHUIS (Millet) 9.1. Received a special award, Paris Iris Commission. General effect purple; Standards beautiful shade of violet-purple; Falls deep velvety rich violet. Fragrant. Thrifty. Highly recommended.

Each \$1.00; 3 for \$2.00.

GLAMOUR (Bliss 22). 36 in. A beautiful iris with violet Standards and rich purple Falls.

Each \$1.00.

GLOWING EMBERS (Sturt.). Standards tan, slightly flushed violet; Falls rich velvety pansy-purple; conspicuous orange beard. Vigorous grower; considered one of Miss Sturtevant's finest. 48-inch.

Each 50c; 3 for \$1.25.

GOBELIN RED (Danenhauer 1929). An absolutely new color; actually ox blood red, contrasting sharply with the known "red iris" by complete lack of red purple in make-up. Now used as a foundation to develop a race of fine reds. By request, a bench has been placed under the apple tree near the original plant. An outstanding beauty! Flowers of medium size; very finely formed and carried. Unusually long blooming period. Stems and leaves are thin, strong, erect. This variety alone is reward enough for ten years' effort.

Each \$5.00.

GOLD CREST (Dykes). A beautiful blue violet with white beard tipped orange; lovely color.

Each 25c; 3 for 50c; 12 for \$1.25.

GOLDEN GLORY (Jackson 1927). Standards pinard yellow deepening to lemon chrome at base; Falls baryia yellow deepening to pinard yellow at base. Practically a large yellow self.

Each \$1.00.

GOLDEN PROMISE (Neely 1924). 30 in. Standards deep yellow; Falls soft yellow faintly flushed soft-lavender.

Each 50c.



A Small Section of One of Our Two-Year-Old Iris Fields

GOLDDLOCKS (Wayman 1930). 36 in. A great yellow. The Standards, Falls and styles are a uniform light yellow, of striking beauty, with a lustrous velvety sheen, and of the most beautiful appearance throughout the entire flower. A very fine new iris.

Each \$20.00.

GOLD IMPERIAL (Sturtevant). One of the finest of all yellow irises. A pure yellow self of beautiful clear coloring. A lemon-chrome-yellow of beautiful form on a thrifty vigorous plant. One of the few good yellows.

Each 25c; 3 for 60c.

GRACE STURTEVANT (Bliss 1926). 36 in. In our opinion the greatest of all the Dominion seedlings and the greatest iris Mr. Bliss has sent out. In our gardens the most striking thing this year. A rich brilliant iris. A very rich velvety brown with a most brilliant golden beard.

Each \$5.00.

HALO (Yeld 1917). Standards a light violet; Falls a dull bluish violet. A vigorous grower of good habit. Resembles Lord of June.

Each 35c; 3 for 85c.

HARPALION (Perry). A tall iris with lavender Standards, and lavender blue Falls. Very pretty.

Each 35c; 3 for \$1.00.

HARRIET PRESBY (Presby). 44 in. A fragrant late, pink-toned lilac that can be seen all over the garden.

Each 25c; 3 for 60c.

HENRI RIVIERE (Millet 1927). 42 in. A splendid new French variety seldom seen as yet. Standards pure lemon yellow; Falls mauve, with yellowish reflex and a canary-yellow throat.

Each \$5.00.

HER MAJESTY. 32 inches. Late. Standards soft rose; Falls red, deeply veined. An extra fine variety, the general color effect of which is pink.

Each 25c; 3 for 60c.

IDEAL (Cay. 1923). 30 in. Standards pure blue; Falls rich deep blue. Certificate of Merit French National Horticultural Society.

Each 25c; 3 for 60c.

IMPERATOR (Cayeux). Large, late flowering, with cupped Standards and straight hanging Falls of raisin purple. Strong superb plant. 40-inch.

Each 25c; 3 for 60c.

INDIAN MAID (Pfeiffer). A very pretty and striking iris by Mr. Pfeiffer. Standards lavender with dark maroon Falls.

Each 25c; 3 for 50c; 12 for \$1.25.

INGEBORG (Goos & K.). 79. Very early intermediate. Pure clear white. 18 inches. Very desirable for an early white.

Each 25c; 3 for 50c; 12 for \$1.25.

IRIS KING (Goos & K.). Standards a buff yellow; Falls velvety garnet brown, shaded ox-blood red with an intense, well defined yellow border. A brilliant iris. 24 inches.

Each 25c; 3 for 50c; 12 for \$1.25.

ISOLENE (Vilmoren). Standards pinkish buff-tinged cinnamon; Falls mauve with yellow tinting at center. Three feet. The straight hanging falls make the flower look long. A most beautiful iris but in the north must be well drained and lightly mulched for winter.

Each 25c; 3 for 50c; 12 for \$1.25.

JACINTO (Berry). Standards light Lobelia violet; Falls Ageratum violet. Excellent. 44-inch.

Each 50c; 3 for \$1.25.

JACQUELINE GUILLOT (Cayeux). Very large flowers of pure lavender blue. Stalks strong and well branched; free flowering; wonderfully fragrant. Very satisfactory. 36-inch.

Each 50c; 3 for \$1.25.

JAPANESEQUE (Farr). Standards white with streaks of lavender flecked violet; Falls deep violet with lavender edge. The six petals stand out horizontally like those of a Japanese iris; therefore distinctly different.

Each 25c; 3 for 50c; 12 for \$1.25.

JEAN CHEVEREAU (Cayeux). New. Standards primrose-yellow, shading to buff; Falls cream stippled and edged red; Yellow beard. Beautifully odd-colored.

Each 25c; 3 for 60c.

JUBILEE (Sass). Standards a rich peach color; Falls creamy-white, dotted and veined light brown. Flower ruffled. 30-inch.

Each 25c; 3 for 50c; 12 for \$1.25.

JULIA MARLOWE (Shull). A tall stately flower with pink tones of Chinese-violet and raisin purple. Large, Magnifica form. 40-inch.

Each 50c.

JUMBO (Jacob Sass). Standards Vanderpool's violet; Falls mulberry purple with distinct brown stripes on haft.

Each 50c.

JUNIATA (Farr). Standards and Falls clear blue, deeper than Dalmatica. Tallest of the bearded irises. Large, fragrant flowers.

Each 25c; 3 for 50c; 12 for \$1.25.

KANSAS (Timmerman 1931). 40 in. A new, very deep, pink-toned iris of real merit. Large sized flowers of heavy texture, well placed on tall stems.

Each \$2.00.

KATHERINE E. LEES (Pfeiffer). White and delicate lavender; Standards ruffled; fragrant, tall grower. Very beautiful.

Each 25c; 3 for 50c; 12 for \$1.25.

KATHERYN FRYER (Fryer 1917). Standards large bright yellow; Falls velvety maroon, veined white in center, yellow at base. Orange beard. Fragrant. 32 in.

Each 25c; 3 for 50c; 12 for \$1.25.

KING KARL (Sass). A heavily ruffled richly colored plicata. Ground color cream, deeply frilled, dotted with a rich brown. Best of the Sass Plicatas. Award of Merit by American Iris Society.

Each 50c.

KING MIDAS (Mead 1929). A splendid new iris that always arrests the eye. Standards golden buff, suffused garnet brown; Falls velvety iridescent garnet-brown, edged golden buff, with heavy orange beard. Center of flower illuminated with glowing yellow lights.

Each \$5.00.

KING TUT (H. Sass 1926). 30 in. One of the brightest of all the irises. General garden effect bright glowing red. Standards cocoa brown; Falls Hessian Brown. From a distance one of the reddest of all irises.

Each \$1.50.

KLAMATH (Klein 1930). 40 in. A big dark violet, the falls having a reddish tinge with a broad light edge.

Each \$12.00.

KOCHII. A wild iris from southern Europe. Very early, hardy, and profuse bloomer. 12 to 18 inches. A uniform, rich, dark blackish purple. Everybody likes it.

Each 25c; 3 for 50c; 12 for \$1.25.

LABOR (La-Boar) (Cayeux). Standards dark violet heliotrope; Falls darker shade than standards. General effect, reddish copper. A wonderful color, very distinct. One of the comparatively new introductions. We highly recommend it. 36-inch.

Each 75c; 3 for \$2.00.

LADY BYNG (Bliss). A beautiful flower that might be classed as clear pale lavender or orchid bordering on pink. Profuse bloomer. A sister flower to Susan Bliss, 36-inch.

Each 25c; 3 for 50c; 12 for \$1.25.

LE CORREGE (Vilm.). Standards smoky bronze; Falls plum red; brilliant prominent beard; spikes long and well branched. Very striking both for garden and show room. 46-inch.

Each \$1.50.

LENT A. WILLIAMSON (Williamson). 42 inches. Early. Standards very broad, soft violet; Falls very large velvety royal purple. Brilliant gold beard. Massive. An American iris that ranks first.

Each 25c; 3 for 50c; 12 for \$1.25.

LEOTA (Fryer). Standards pure white; Falls large pure white, heavily veined with blue. A tall growing variety. Flowers large. Profuse blooming. One of the very choice whites.

Each 25c; 3 for 50c; 12 for \$1.25.

LINDBERGH (Arb. 1928). Soft lavender blue standards with dark blue falls, with a distinct lighter border. A beautiful flower.

Each \$1.00.

LONA (Sass). Another beautiful, richly colored, ruffled Plicata of which Sass has produced so many. A soft buff, heavily marked purple at the edges. 30 inches. Very striking.

Each 50c.

LORD LAMBOURNE (Perry). Standards a soft shade of rose fawn; Falls a rich crimson with white reticulations at the base. Heavy bright yellow beard. 44-inch.

Each 50c.

LORD OF JUNE (Yeld) 9.1. As irises come and go, I believe we shall always keep Lord of June and class it as one of the greatest. Standards broad and floppy, light chicory-blue; Falls large, broad, lavender-violet. Several great blooms open at once.

Each 25c; 3 for 50c; 12 for \$1.25.

LOS ANGELES (Mohr-Mitchell 1927). Immense white flowers of beautiful form and great substance, the standards faintly edged blue. An outstanding iris.

Each \$2.50.

LOUIS BEL (Denis 1925). Standards very dark pansy violet; Falls a still darker velvety black violet. One of the darkest of all irises.

Each \$1.00.

MAGENTA (Cayeux 1927). 39 in. A self in the deepest amethyst violet; a glorious flower.

Each \$3.00.

MAGNA CHARTA (Dan. 1931). A pure white flower, strikingly dotted with splotches of intense blue ranging in size from minute spots to blotches a half an inch long to an eighth inch wide. A very distinct and attractive iris.

Each \$5.00.

MAGNIFICA (Vilmoren) 8.7. Standards white flushed with violet blue; Falls long, drooping, deep reddish violet, reticulated chestnut. Great large blooms; tall strong well-branched stems. 40-inch.

Each 25c; 3 for 60c; 12 for \$2.00.

MAGNIFICENT (Fryer 1923). A large, bright red-toned self. Much redder than Opera. Honorable mention by American Iris Society.

Each 75c.

MAJESTIC (Bliss) 8.8. A Dominion seedling. Very large flowers of fine form and lasting quality. Standards round, light lavender to mauve shaded bronze at base; Falls straight hanging, rich raisin-purple. Free bloomer; stout stems; 36-inch.

Each 25c; 3 for 60c; 12 for \$2.00.

MANON LESCAUT (Danenhauer 1929). One of those indescribable things called plicata, but which are not. Standards, cream delicately edged with violet; a fine line divides a cream white center; then a wider area overlaid with violet. Falls much the same except for the unusual cream and purple beard. Enriched with red brown coloring in the throat. Very strong; develops rapidly; blooms lavishly.

Each \$2.00.

MAORI PRINCESS (Shull). Resembles Marsh Marigold, except much richer in color. The richest of all the yellow bicolor blends.

Each 75c.

MARJORIE TINLEY (Perry). Enormous flowers borne on strong branching stems over 4 feet. Standards broad incurved, soft lavender blue; Falls deeper shade of same color with very showy orange beard. Falls held out horizontally to give the flower a beautiful form.

Each 25c; 3 for 50c; 12 for \$1.25.

MARY BARNETT (Crumbler). To be like Princess Beatrice is a fine recommendation. Mary Barnett is a Princess Beatrice improved! A larger flower with a great golden beard, so intensely brilliant it enlightens the whole flower.

Each 50c; 3 for \$1.00.

MARY GIBSON (Perry). Standards a beautiful shade of light bronze, overlaid old rose; Falls old rose, suffused bronze. Distinct; fragrant; free flowering; a vigorous grower. 42-inch.

Each 50c; 3 for \$1.00.

MARY ORTH (Farr). Standards light blue-violet; Falls velvety dark blue violet. A fine blue bicolor, regarded as one of Mr. Farr's best. 30-inch.

Each 35c; 3 for 60c.

MATILDA (Jacob Sass). Standards soft bluish violet, sprinkled on a white ground; Falls same color. Medium large flower. 30-inch. The nearest to a blue plicata.

Each 50c.

MAY SADLER (Perry 1925). 32 in. A very pretty variety. Standards a striking shade of violet-rose; Falls a dark madder-crimson.

Each \$1.00.

MEDRANO (Vilmoren) 8.4. Standards coppery red-purple; Falls rich dark maroon-purple. Crest heavily flecked; orange beard. A very rich and distinct color. An odd and attractive iris that adds greatly to any collection because of its dark colors which contrast strikingly with the lighter varieties.

Each 25c; 3 for 60c.

MESTOR (Perry). Standards a light violet blue; Falls a rich violet purple. Large; very free flowering. An iris you'll like. 42-inch.

Each 35c; 3 for \$1.00.

MICHELLINE CHAIRRAIRE (Denis). A wonderful white, of large size, good substance. Very tall with strong stems. Pure white with golden reticulations. 4 to 5 feet.

Each \$1.00.

MIDGARD (Sass). A wonderful blending of pink and yellow. General effect, a rich shade of pink. Large flowers, perfectly formed. We can strongly recommend this variety. 36-inch.

Each \$1.00.

MIDWEST (Sass). A fine iris of large size and heavily ruffled. Standards white flushed purple; Falls white bordered purple. Fine. 30-inch.

Each 25c; 3 for 50c; 12 for \$1.25.



Iris in Full Bloom—Brand Peony Farms

MILDRED PRESBY (Farr). Standards ivory-white, faintly flushed lavender; Falls rich pansy-violet, faintly edged lavender white. Considered by many as Mr. Farr's very best iris. 32-inch.

Each 25c; 3 for 50c; 12 for \$1.25.

MLLE. SCHWARTZ (Denis). Standards and Falls, a uniform soft light lavender blue. Distinct and beautiful. 48-inch.

Each 50c; 3 for \$1.00.

MME. CECIL BOUSGANT (Millett 1923). 36 in. A pleasant shade of violet-rose, with an orange beard tipped blue to match the tips of the styles. Award of Merit Paris Exposition 1925.

Each \$1.00.

MME. CHEREAU (Lemon). 42 inches. Mid-season. Standards and Falls pure white with clear frilled lavender edge. This is undoubtedly the best to date of the frilled varieties.

Each 25c; 3 for 50c; 12 for \$1.25.

MME. CHOBAUT (Dennis 1916). Standards creamy pink, dotted bronze-red, darkest at edges; Falls white, edged russet at top and has a purple tip. Medium height and size.

Each 25c; 3 for 50c; 12 for \$1.25.

MME. DURRAND (Denis). 60 in. Very large. Standards buff yellow, flushed mauve; Falls light Ampero purple, flushed buff. Considered one of the choicest.

Each \$1.00.

MME. HENRI CAYEUX (Cayeux). Standards reddish violet purple; Falls dark purple with edges lighter. Very fine. 36-inch.

Each 50c; 3 for \$1.00.

MOA (Bliss). Standards pure violet; Falls deep violet purple. Enormous flowers of great substance. A Dominion Seedling. 42-inch.

Each 75c.

MONSIGNOR (Vilm.). 28 inches. Late. Standards richest satiny velvet; Falls deep purple-crimson. Very large and one of the very best.

Each 25c; 3 for 50c; 12 for \$1.25.

MOONLIGHT (Dykes). Standards pale amber yellow; Falls sulphur yellow, with heavy greenish gold reticulation. Broad lemon yellow beard. Fragrant. A large, well formed flower. Well named. 36-inch.

Each 50c; 3 for \$1.25.

MORNING SPLENDOR (Shull). Standards Petunia violet; Falls velvety raisin purple; general effect, rich crimson. Everything considered, we think there is no greater, no finer iris than this one. In size, form, color and substance, it is everything desirable. Very fragrant; free blooming. Awarded the Silver Medal of the Garden Club of America in 1926. 42-inch.

Each 25c; 3 for 60c; 12 for \$2.00.

MOTHER OF PEARL (Sturtevant). Standards and Falls, light bluish lavender with a faint creamy undertone. Large flowers; beautiful form; a popular favorite.

Each 25c; 3 for 60c; 12 for \$2.00.

MRS. ALAN GRAY (Foster). One of the most beautiful of iris. General color effect pink. Very fine for massing. Often gives a second crop of bloom in August.

Each 25c; 3 for 50c; 12 for \$1.25.

MRS. HORACE DARWIN (Foster). 28 inches. Standards pure white; Falls white, slightly veined. One of the best of whites.

Each 25c; 3 for 50c; 12 for \$1.25.

MRS. HETTIE MATTON (Perry). Standards purple fawn, flushed bronze; Falls rich crimson purple; golden yellow beard. Flowers large. Strong grower; profuse bloomer. 36-inch.

Each 50c.

MRS. H. F. BOWLES (Perry). Standards soft brown, overlaid with old gold; Falls brilliant brick red. Very distinct. 36-inch.

Each 50c.

MRS. MARION CRAN (Perry). One of the very finest of the soft rose pinks. Large flowers of perfect shape. For a real pink, this is the one to order. 48-inch.

Each \$1.00; 3 for \$2.00.

MRS. TINLEY (Bliss). High widely branched grower. An early variety producing abundant large self-colored blooms of soft lavender to pleroma-violet.

Each 25c; 3 for 50c; 12 for \$1.25.

MRS. VALERIE WEST (Bliss) Dominion seedling. We think this the greatest of all the Bliss irises. Falls of enormous size and great substance, rich deep crimson brown; Standards large, lavender shot with bronze. Strong stem. 40 inches. Well branched. Far and away better than the average run of the good Dominion seedlings.

Each \$4.00.

MUSCADIN (Cayeux 1925). 36 in. Rich canary standards and metallic violet-blue falls, overlaid claret, with a broad margin of bright yellow.

Each 50c.

MY MARYLAND (Sheets 1930). Standards Petunia violet, flushed rose, shaded buff at base; Falls deep velvety amaranth-purple, overlaid garnet-brown. Similar to Glowing Embers but redder and more striking.

Each \$15.00.

NAIAD ATLANTA (Danenhauer 1929). Color, entirely flesh-pink effect with true pink standards. A beautiful flesh-pink flower of medium size, carried at varying heights throughout the plant on strong, straight stalks of varying length.

Each \$5.00.

NAOMI (Sturtevant). 36 in. A combination of lilac and dahlia carmine with buff style.

Each 75c.

NEBRASKA (H. P. Sass). Standards apricot yellow, ruffled; Falls, same color, striped and clouded brown; dark yellow beard. 34-inch.

Each \$1.00.

NEHAWKA (Jacob Sass). A self-colored plicata, but the darkest purple of all of them.

Each 50c.

NIMBUS (Shull). An iris that we have always thought very much of. A large iris of good color and fine stately form. Standards arched, light lobelia-violet with a narrow darker edge; Falls velvety deep purple. 36 inches. A very rich dark iris.

Each 25c; 3 for 60c.

NINA WELLS (Fos. 1909). Standards light violet; Falls deep purple, with white reticulations at haft. Large flowers, borne on stout stems. 48 inches.

Each 25c; 3 for 50c; 12 for \$1.25.

NOCTURNE (Shull 1926). 36 in. An exceedingly rich dark blue. Petals of great substance. Form of flowers very beautiful.

Each \$3.00.

OLD GOLD (H. P. Sass). Standards, primoline yellow, ruffled; Falls, Old Gold, overlaid buff; a few stripes on haft. Distinct yellow beard tipped brown. 28-inch.

Each 50c

OMAHA (H. P. Sass). Standards and Falls reddish purple. A deep rose bordering to red. 30-inch.

Each \$1.50.

OPERA (Vilmoren) 8.7. A very bright violet-red bicolor, much admired. We sell out every year long before the season is over. Standards bright purple; Falls rich deep red purple. 32-inch.

Each 25c; 3 for 50c; 12 for \$1.25.

OPHELIA (Cayeux). A fine combination of color blending. Standards and Falls, orange cream, mauve and bronze; heavy orange beard. One of the most beautiful of the new irises. 36-inch.

Each \$1.00.

OREGON BEAUTY (Kleinsorge). 38-in. Gigantic flower of great substance, with aconite-violet standards and widely flaring velvety purple falls.

Each \$2.50.

OSSIAN. Standards canary yellow; Falls soft rose red, deeply veined. This is one of the most showy irises of its class. Distinctly different. Tall. Velvety purple. A handsome clean-cut iris.

Each 25c; 3 for 50c; 12 for \$1.25.

OTOE (H. P. Sass). A deep-toned purple red. New.

Each 50c.

PADUSOY (Sass). A deep lilac rose self. Falls nicely flaring. Very heavy texture.

Each 50c.

PARC DE NEUILLY (Verdier). Standards and Falls navy blue of reddish tinge, with an everchanging effect.

Each 25c; 3 for 50c; 12 for \$1.25.

PEAU ROUGE (Cayeux). Standards coppery-red, faintly shaded violet; Falls deep blood red with light brownish yellow beard. One of the best of the cheaper red toned iris.

Each 35c; 3 for \$1.00.

PEERLESS (Dykes). A wonderful mahogany-red flower; most perfect form. Standards very broad, erect, reddish violet; Falls long, straight hanging, deep purple-red; rich golden beard. A masterpiece. 38-inch.

Each \$1.00.

PENN TREATY (Danenhauer 1929). A cross between Ambassador and Sou. de Mme. Gaudichau and inherits very rich qualities from both parents. A deep rich velvet or blackish violet. Perfect form; very thick texture. Standards, Dauphins violet; Falls, deep blackish violet. Of all the irises in our garden, this is undoubtedly the richest in color. We class it as one of the very greatest and most beautiful.

Each \$8.00.

PERFECTION (Barr). 30 inches. Midseason. Standards lavender, flecked with deeper shade; Falls rich velvety lavender. A very fine iris. Has a wonderful amount of bloom to the stalk.

Each 25c; 3 for 50c; 12 for \$1.25.

PHYLLIS BLISS (Bliss) 8.9. A beautiful rosy lavender self. Standards are arched; Falls are drooping. Both are a soft light lavender, shaded lighter at the haft. 36 inches. This variety carries a delicate lavender tint in general effect, while the color tone of its sister iris Susan Bliss is pink.

Each 25c; 3 for 50c; 12 for \$1.25.

PIONEER (Bliss). An immense red-purple of beautiful form. Standards large, bright, ampara-purple; Falls very broad and of great substance, warm deep pansy-purple. Wonderful flower.

Each 50c; 3 for \$1.25.

PLUIE D'OR (Cayeux 1928). A large golden yellow. The yellow that everybody wants. Large bloom, fine texture, well branched stalks.

Each \$5.00.

PONGEE (Bretschneider 1931). 38 in. A light buff-colored self with a beautiful frosty iridescence. A bright golden beard enlivens the flower.

Each \$5.00.

PRAIRIE GOLD (Sass). A beautiful deep rich yellow. 32 inches. Not a tall flower but wonderful for landscape effect. Mr. Sass considers this as fine an iris as he has ever sent out.

Each 35c; 3 for \$1.00.

PRIMROSE (Sturt.). Standards amber yellow; Falls a lighter yellow; center a clear lemon yellow. Long blooming; splendid form and substance. 30-inch.

Each 50c.

PRINCESS OSRA (Bliss). A very fine white iris with wide border of pale violet; heavy orange beard. 36-inch.

Each 50c.

PRINCESS WENONAH (Pfeiffer 1929). Standards and Falls, beautiful uniform shade of light lavender, similar in color to Caroline Stringer. Prominent yellow beard. Heavy stiff stem, well branched. General effect pink. 30-inch.

Each 50c; 3 for \$1.00.

PROFUSION (Pfeiffer). White tinged with lavender; a profuse bloomer and robust grower. We consider this a great improvement of Florentina Alba.

Each 25c; 3 for 50c; 12 for \$1.25.

PROSPER LAUGIER (Verdier). 30 inches. Standards fiery bronze; Falls velvety ruby purple. Of all the standard varieties this is undoubtedly the most striking and distinct.

Each 25c; 3 for 50c.

PROSPERO (Yeld) 8.1. An enormous flower on a strong stem 4 feet tall. Standards deep lavender; Falls Anthracene Violet. Probably the hardest and most thrifty of all the large irises.

Each 25c; 3 for 50c; 12 for \$1.25.

PUMILA (Baby Iris). Deep purple, very rich and effective when bordering the taller forms. These are among the earliest to bloom. They are very dwarf and make a fine border plant.

Each 25c; 3 for 60c; 12 for \$2.00.

QUAKER LADY. Standards smoky lavender, with yellow shadings; Falls ageratum-blue and old gold; stigmas yellow; yellow beard, 38 inches.

Each 25c; 3 for 50c; 12 for \$1.25.

QUEEN CATERINA (Sturtevant) 9.0. Because of its fine color combined with beautiful form, this is one of the finest irises. Standards domed; Falls well rounded and drooping. Both a pale lavender violet. Very beautiful.

Each 25c; 3 for 60c; 12 for \$2.00.

QUEEN OF MAY (Salter). Standards and Falls a soft rose lilac, almost pink. A beautiful tall growing variety. 32 inches.

Each 25c; 3 for 50c; 12 for \$1.25.

RAGUSA (H. P. Sass 1929). Standards fancy purple, erect; Falls blackish red purple; five to seven flowers on a 26-inch stem. One of the best dark red purple blends of the intermediates.

Each \$3.00.

RAMONA (Mohr). A wonderful blending of colors, hard to describe. A petunia-violet flushed crimson-brown with orange buff haft. Fragrance of mignonette.

Each 25c; 3 for 50c; 12 for \$1.25.

RED WING (Sass 1926). 36 in. Standards light brown; Falls dahlia carmen; a large flower with intense reddish tints.

Each \$2.50.

RHEIN NIXE (Goos & K.) 8.2. General effect white and light purple. Standards white; Falls pansy violet, bordered bluish white; flaring haft reticulated olive. 36 inches. An indispensable iris.

Each 25c; 3 for 50c; 12 for \$1.25.

RHEINTRAUBE (Goos & K.). Where one wants a medium-toned blue for mass effect in the garden, this is the variety. Rheintraube will make the finest blue mass planting.

Each 25c; 3 for 50c; 12 for \$1.25.

RHEINGAUPERLE (G. & K.). Standards soft rose pink; Falls a brightest shade of rose.

Each 50c.

ROMOLA (Bliss). Dominion Seedling. Standards pale lilac, tinged ivory yellow; Falls rich velvety red violet. Vigorous; free flowering; large, beautiful blooms. 42-inch.

Each \$1.00.

ROSA BONHEUR (Cayeux 1926). 30 in. Standards pale metallic yellow; Falls pale yellow, overlaid lavender violet. Very nice flower.

Each 50c.

ROSE MADDER (Sturtevant) 8.2. General effect rosy purple. Standards light purple with dark narrow margin; Falls darker and very rich; orange beard. Fragrant. Beautiful. 40-inch.

Each 25c; 3 for 60c; 12 for \$2.00.

ROSE UNIQUE (Farr). Standards and Falls violet rose. An early iris much admired. General effect a deep pink. 24 inches.

Each 25c; 3 for 50c; 12 for \$1.25.

ROSEWAY (Bliss). Standards and Falls violet rose; vivid orange beard. General color effect very pink. 30 inches.

Each 25c; 3 for 50c; 12 for \$1.25.

RUTH PFEIFFER (Pfeiffer). Another one of Mr. Pfeiffer's light shades of which he has brought out so many good ones. A soft blending of white and lavender in beautiful combination. Tall, fragrant, very profuse. Praised by Mr. F. X. Schriener in his 1929 iris book as one of the best of its color.

Each 25c; 3 for 50c; 12 for \$1.25.

ROBERT W. WALLACE (Perry). Standards rich violet; Falls deep purple. Striking orange beard. One of the very best of the rich dark colored irises. Immense flowers. A free flowering dark pallida; good form and substance. 42-inch.

Each 50c.



Another Field of Choice Irises—Brand Peony Farms

SALONIQUE (Cayeux). An iris with striking and pleasing contrasts. Standards white; Falls velvety purple. Each 25c; 3 for 60c.

SAN LOUIS REY (Mohr-Mitchel 1923). 40 in. Flowers of beautifully rounded form, of the same color as Opera, only they are twice as large. A fine red. Each \$1.00.

SEMINOLE. Soft violet rose. Falls rich velvety crimson. Brilliant orange beard. Midseason. 28 inches. Each 35c; 3 for \$1.00.

SENSATION (Cayeux 1925). 48 in. A wonderful cornflower blue iris of perfect form and substance; great big flowers on tall, stout stems. A wonderful blue. Each \$3.00.

SEQUIOIAH (Shull). Standards light lilac; Falls pansy purple, shading to rich velvety red purple. Charming. Each \$1.00.

SHASTA (Mohr-Mitchel 1927). 40 in. Snow-white with faint traces of amber at center. A wonderful outstanding white. Each \$1.00.

SHEKINAH (Sturt.). The finest tall pale yellow. One of the best of the pale yellows. Very nice. Each 25c; 3 for 50c; 12 for \$1.25.

SHERWIN WRIGHT (Kohankie). A bright deep yellow and one of the best of the old standard sorts. Each 25c; 3 for 50c; 12 for \$1.25.

SIMONE VAISSIERE (Millet). Standards white, slightly shaded blue; Falls violet-blue. Resembles Lord of June, though standards are of better substance; more brown in the falls. Wonderful. Each 35c; 3 for \$1.00.

SIR GALAHAD (Schull). Standards mauve; Falls pansy-violet. A striking brilliant bicolor; very large fragrant flowers. You will like it. 40-inch. Each 50c; 3 for \$1.00.

SIR MICHAEL (Yeld 1925). 48 in. One of the finest irises ever brought out. Standards clear lavender blue; Falls a rich velvety red-purple; beard a brilliant red gold. A great iris. Many regard this as the finest of all irises. Each \$4.00.

SNOW WHITE (Sturt.). A pure clear white. Beautified by a greenish haft; tall, strong, hardy. Like White Knight, except much larger and somewhat taller. 36-inch. Each \$1.00.

SOLFERINO (Cayeux 1925). 46 in. A lilac red, much like but larger than Aphrodite. Each \$1.00.

SOLANA (Shull). Clear yellow standards; deep red falls. 36 inches. Each 25c; 3 for 50c; 12 for \$1.25.

SOUV. de Let. MICHAUD (Mil. 1923). A large glistening light blue iris, of wonderful perfection of form, color, substance, branching and fragrance. Each \$1.00.

SOUV. de MME. GAUDICHAU (Millet) 9.0. Standards very rich deep blue-purple; Falls deeper shade almost black purple. Beard blue, tipped yellow. A wonderful iris with every imaginable good quality. Has won more awards than most any other. 36-inch. Each 25c; 3 for 50c; 12 for \$1.25.

STEEPWAY (Scott). Standards reddish fawn; Falls rosy-mauve with brown reticulations. A tall growing variety with rounded standards and falls. Very artistic in landscape planting. Each 25c; 3 for 50c; 12 for \$1.25.

SUNSET (Denis). Standards beautiful golden; Falls same color suffused blue-violet; prominent deep yellow beard. Vigorous; free flowering; late fragrant. 42-inch. Each 25c; 3 for 50c.

SUSAN BLISS (Bliss). Rich rose pink self with a delicate purple sheen. Pale orange beard. Vigorous; free flowering; excellent garden flower. Rhizomes always small. Increases rapidly. 38-inch. Each 25c; 3 for 50c; 12 for \$1.25.

SWAZI (Bliss 1922). 38 in. A dark blue-purple, late and fine. One of the best of the Dominion race. Usually rich and fine. Each \$1.00.

SYLVIA LUCAS (Pfeiffer). Standards blue; Falls purple. Tall strong stem, 36 to 40 inches. Each 25c; 3 for 50c; 12 for \$1.25.

SWEET LAVENDER (Bliss). Standards pale lavender; Falls deep rose lavender. 42 inches. Each 25c; 3 for 50c; 12 for \$1.25.

TAJ MAHAL (Sturt.). A very fine white with large petals of great substance. Tall stems, well branched. One of the very best whites. 42-inch. Each 35c; 3 for \$1.00.

TENEBRAE (Bliss) 8.8. A dark colored Dominion seedling of dependable growth. Standards violet purple, darker at center; Falls velvety blackish purple; center flushed straw yellow. 36-inch. Each 25c; 3 for 60c.

THAIS (Cayeux 1926). 38 in. A beautiful large pink flower with strong stems. A much clearer pink than Susan Bliss. Extra fine pink. Each \$1.00.

THORSTEN (G. & K. 1927). A flower of beautiful form with rich plush-like petals in a blue and pansy violet bi-color. Each \$1.00.

WM. MOHR (Mohr 1925)

A most striking and beautiful iris. Immense blooms of pale lilac with standards flushed darker; the whole flower beautifully veined Manganese Violet. Looking at these enormous flowers of exquisite beauty, it would hardly seem that they could be hardy in our cold northern climate; yet, fortunately, they are!

Each \$1.00

THRUDWANG (G. & K. 1927). A very brilliant yellow bi-color of fine form with bright yellow standards and rich plum-purple falls. Fine for massing.

Each 75c.

TITAN (Bliss). A Dominion seedling. Standards light violet blue; Falls violet purple. When first introduced, it sold at \$50 per rhizome. Very striking, of fine form and texture. Hardy plant; strong massive stems. 38-inch.

Each 75c.

TROJANA. Standards overlap, light lavender violet; Falls manganese violet, drooping. Very tall. Beard blue.

Each 25c; 3 for 50c; 12 for \$1.25.

TROOST (Denis 1908). Standards deep rosy purple; Falls veined violet changing to brown. Unique and beautiful. 2 feet.

Each 25c; 3 for 50c; 12 for \$1.25.

TROSTRINGER (H. P. Sass). A cross between C. E. Stringer and Trojana. Taller than either of these two good irises. General effect pink or rose purple.

Each 50c; 3 for \$1.25.

TRUE CHARM (Sturtevant). A beautiful Plicata of elegant form. Flowers white with delicate blue-lavender margin. Hardy, vigorous grower. 40-inch.

Each 25c; 3 for 50c; 12 for \$1.25.

TRIANON. Standards yellow; Falls yellow with bluish reflections. A vigorous grower and very floriferous. Late. 28 inches.

Each 25c; 3 for 50c; 12 for \$1.25.

VALENCIA (Mohr). A beautiful bright orange buff self. Large flowers; excellent form; remarkable substance. A popular favorite. 36-inch.

Each 50c.

VALERY MAYET (Denis). Standards coppery-rose, flushed orange; Falls deep velvety bronzy red. Medium size flowers on tall, high-branched stalks. A color gem. 30-inch.

Each 25c; 3 for 50c; 12 for \$1.25.

VERT GALLANT (Cayeux 1929). 48 in. A very large flower of great substance, brilliant coloring and the finest form. Standards are a blending of coppery fawn and soft lilac; Falls intense garnet red with bronze edge. An outstanding iris in every way.

Each \$20.00.

VESPER GOLD (Wmson. 1927). 38 in. A grand iris. One of those where the blending of colors is so perfect as to please every eye. A yellow iris where the blended tints are orange to red.

Each 50c.

VIKING (Bliss). A fine large blue bi-color of beautiful form and substance.

Each 50c.

VIRGINIA MOORE (Shull). Standards and Falls a bright chrome yellow. Flowers large. A splendid yellow. 36 inches.

Each 25c; 3 for 50c; 12 for \$1.25.

WACONDA (Sass 1931). 38 in. Standards a deep fuchsia red; Falls rich velvety violet-carmine. The general effect of this flower is a metallic light red. A new iris.

Each \$6.00.

WAMBLISKA (Sass 1930). 50 in. A great tall new white of immense size. A beautiful white of the finest form, carrying an undertone of blue at the base of petals.

Each \$12.00.

WEDGEWOOD (Dykes). Standards and Falls an even tone of rich blue. Large flowers with prominent white beard. As the flower ages it fades to a lighter blue which doesn't mar its beauty. Prolific. 42-inch.

Each 50c.

WHITE & GOLD (Nicholls 1927). A large pure glistening satiny white. No markings. Brilliant golden beard and flaring falls.

Each \$1.00.

WHITE QUEEN (Gey 1918). A pure white iris that we like very much. The color is pure with slight tracings of green on the haft which only adds to the beauty of the flower.

Each 50c.

WILD ROSE (Sturt.). An iris well named. A dainty satiny-pink. One you will admire. 36-inch.

Each 35c; 3 for 80c.

YELLOW MOON (Sturt.). Standards and Falls a soft yellow. A variety of wonderful texture. A real addition to any garden. 36-inch.

Each 35c; 3 for 80c.

YOLANDE (Millet). Standards and Falls, dark velvety blue. Enormous flowers of great substance. Strong, hardy grower; a wonderful landscape variety.

Each 25c; 3 for 60c.

ZANARDALLIA. 36 in. One of the best of the blue irises. A real blue with beautifully shaped petals.

Each 25c; 3 for 50c; 12 for \$1.25.

ZULU (Bliss 1925). 38 in. A deep steely blue, and dark velvety purple. Very late.

Each \$1.00.

ZWANENBURG (Denis). Standards and Falls cream, blotched greenish yellow. A very odd color. 20 inches.

Each 25c; 3 for 50c; 12 for \$1.25.

“SENSATION” Iris Collection

12 Beautiful Varieties
Each One a Masterpiece

IF PURCHASED SEPARATELY . . . A TOTAL VALUE OF \$12.00

Collection Price . . . **\$10.00** . . . Sent Postpaid

BRUNO—A bronze and red-purple of exceptional merit	\$ 1.00
CARDINAL—Wonderfully rich lavender and raisin-purple	1.00
GERMAINE PERTHIUS—Fragrant deep violet purple	1.00
GEORGE TRIBOLET—Velvety dark red purple	.50
MARY BARNETT—One of the best light blues	.50
MRS. MARION CRAN—One of the finest of the soft rose-pinks	1.00
OPHELIA—A combination of orange cream and mauve	1.00
PIONEER—An immense reddish purple. Extra fine	.50
ROMOLA—A large flower tinted lilac and red-violet	1.00
SENSATION—A wonderful new blue. You will like it	2.50
SNOW WHITE—A strong, vigorous white with green markings	1.00
TROSTRINGER—A real delicate pink	.50
WEDGEWOOD—One of the best true blue irises	.50

A Total Catalog Value of . . . \$12.00

Special Offers on Fine Iris

Our stock of many of the very best Iris has multiplied so rapidly that we now wish to give our customers the benefit of this increase. Collections frequently include one or more varieties which are already in most gardens. Therefore, if you wish, you can now make up your own collection from the following fine varieties, all of which are individually described in this catalog:

Alcazar	Evening Glow	Mrs. Tinley
Ambassadeur	F. B. Schermerhorn	Nimbus
Amber	Fritjof	Nina Wells
Anne Leslie	Gold Crest	Opera
Apache	Isolene	Sweet Lavender
Azure	Japanesque	Souv. de Mme. Gaudichau
Barton Harrington	Katherine E. Lees	Susan Bliss
Bluet	Kathryn Fryer	True Charm
Blue Boy	Kochii	Parc. de Neuilly
Caprice	Midwest	Phyllis Bliss
Celeste	Mildred Presby	Prospero
Cluny	Mme. Chereau	Rheintraube
Col. Candelot	Mme. Chobaut	Rhein Nixe
Dalila	Morning Splendor	Rose Unique
Dream	Mother of Pearl	Ruth Pfeiffer
Duke of York	Mrs. Alan Gray	Shekinah
Edith Scoville	Mrs. H. Darwin	

In Offers 1 to 5 Inclusive

EVERY VARIETY WILL BE LABELED AND TRUE TO NAME

—Offer No. 1—

You may select any 10 of the above fifty varieties for

\$1.50 Postpaid

—Offer No. 2—

You may select any 25 of the above fifty varieties for

\$3.00 Postpaid

—Offer No. 3—

We will send you one each of the fifty varieties for

\$5.25 Postpaid

—Offer No. 4—

For exceptional mass effect, you may select 5 each of 20 kinds—100 fine iris for

\$10.00 Postpaid

—Offer No. 5—

You may select 10 each of 10 kinds—100 plants for

\$8.00 Postpaid

—Offer No. 6—

If you do not care to keep the names and will save us the labeling cost, we will send you 100 of any one kind or a mixed lot of 100 for

\$6.00 Postpaid

—Offer No. 7—

Chosen from our surplus, we will send you fifteen good varieties, not labeled but all different for

\$1.00 Postpaid

New Improved French Lilacs

Far More Beautiful Than the Common Lilac

"THE OWN-ROOT LILAC IS THE ONLY LILAC ONE SHOULD PLANT."

REFERENCE: Read Journal of the Arnold Arboretum, Volume XII, No. 2, article entitled, "Graft Blight—A disease of the Lilac related to the employment of certain understocks in propagation."

The common lilac is one of the hardiest and longest lived of all the flowering shrubs. Old lilac bushes may be seen all about the city of Faribault, planted by the first white settlers when they came here nearly 90 years ago. These old bushes are large and thrifty; there is no apparent reason why they should not live still another ninety years to beautify the yards which they adorn. These are the old fashioned lilacs.

For many years hybridists have been at work improving the lilac. The most of this work has been done in France, and from there the great bulk of our improved lilacs have come. For this reason, these new lilacs are called Improved French Lilacs.

These new lilacs usually come to us propagated either on the root of the common lilac or on a root of one of the many varieties of privet. Neither of these understocks has proven satisfactory. The common lilac is a rapid grower and throws up many suckers from its roots. As a rule, these suckers grow more rapidly than the graft of the Improved Lilac and the result is that the choice lilac top is overgrown and choked out. Again, where privet is used as an understock—if the lilac is not planted deep enough so that the union of lilac and privet is at least a foot under ground—the privet root will kill out in the winter or, if it lives, it sends up privet suckers about the lilac top which prove a great nuisance.

Finding several years ago that good lilacs, propagated in either of these ways, were very disappointing in our cold climate, we set about to bring out the improved lilac on its own root. We find that we can work some varieties onto their own roots very readily, while it is very difficult to grow others in this way. Some of these stubborn sorts seem to unite readily with the root of *Villosa*, a hardy lilac that seldom sends up any sprouts, and we are using this *Villosa* root where we are compelled to do so but not otherwise.

Advantage of the Own-Root Lilac. The lilac you buy from us is on its own root. If this lilac sends up a sucker, the sucker is the same as the bush from which it springs. It grows at the same rate as does the mother bush and when it blooms, the bloom is identical with that of the original plant of which it is a part.

We have never had any success with these new lilacs where they were on common lilac root and not more than 50% success where they were grafted on privet root, yet we have always had perfect success with Own-Root Lilacs, so we believe the Own-Root Lilac is the only lilac to plant and to offer our customers; and we believe an improved lilac on its own root is just as long lived as the common lilac.

Growing an Improved Lilac on its own root is a slow process. It actually takes us two years longer to produce a lilac of a given grade on its own root than it would take to produce the same grade on privet. Yet we insist on sending out only those lilacs that will prove satisfactory, so our customers can depend upon receiving only genuine own-root plants.

We have a wonderful deep rich alluvial soil; the soil in which the lilac revels. This contributes to strong thrifty tops with a large, well-balanced root system. This spring our stock will be unusually fine.

How to Plant. Lilacs can be planted either in spring or fall. In the spring, it should be done very early before the buds start. To allow the French Lilac its natural spread, the plants should be set out not less than eight feet apart. Dig a hole as large as a bushel basket. Fill back rich top soil and tramp down firmly until you can place the plant on this soil so that when roots are spread out naturally the crown will be an inch or two lower than it was in the nursery. Work the soil in carefully among the roots until the hole is half full; then tramp this down unusually hard. Then pour in a full pail of water. After this has settled away, fill the hole with loose mellow soil until it is rounding full; then tramp lightly. Keep plants well hoed.

Fertilizers. A lilac likes a sweet soil and responds wonderfully to applications of lime. Use four quarts of lime to a large bush each year. Any good well-balanced fertilizer can be used with good results.

Pests. Oystershell scale and the lilac borer are about the only enemies of the lilac. For oystershell scale, if affected, use a Miscible Mineral Oil Spray as a dormant spray just before the buds open in the spring. This must be done thoroughly while the scale is at its tenderest stage. Spray early in the day so the bushes will be dry by night. The lilac borer is best handled by prevention. If bushes are kept well cultivated and growing, there is but little borer trouble. Where the borer is at work, he may be taken and killed by running a small wire into the hole and twisting it around to accomplish this. One can also shoot carbon bisulphide into the burrow of the borer with a medicine or fountain pen dropper; then plug up the entrance with putty.



Congo



Katherine Havemeyer

Our Lilac Collection

We have over 160 kinds of the best lilacs. Whenever we hear of a new one, we buy it and try it out.

We bloom all of these in our trial gardens. In this way we can choose from the entire range of varieties, compare one with the other, and eventually retain the best.

We find some of the older sorts as good as the best of the new ones. These we retain. We find many superb things among the newer sorts. These we add definitely to our list. But we also find many of both old and new that we can do without. These we drop. It is our constant aim to keep an offering of new lilacs as good as the best.

This fall we are offering an unusually fine list of French Lilacs. With but few exceptions they are all recent introductions. Since we offer no new lilac until we have it on its own root, we may not always offer these same lilacs as soon as those who grow them on privet.

If you were to try to write a description of the most beautiful sunset you ever saw, you would be in the same position that we are in today when we try, in the brief descriptions we give, to convey the beauty of all the lilacs we offer. The best we can do is to give you the color, form, size, and type; leaving you to imagine the rest.

Remember, the following list are mostly new lilacs, all of the very best. They are own-root lilacs. New lilacs on their own root are decidedly scarce. If you want any of these for fall, place your order early. We do not have many of any one kind and they will not last long.

Our List Of All Choice Standard Sorts

ALINE MOCQUERIS. Double. One of the dark lilacs on the purplish red order. Compact bush of medium height; profuse bloomer, much admired.

Own-Root, 3 to 4 Foot, \$1.50.

ALPHONSE LAVALLE. Blue. Double. Tall, robust growing; makes a very shapely bush. Panicles long, broad, shapely, and compact. Opens an intense blue, but as the florets develop it changes to a beautiful shade of lavender. A wonderful bloomer. Splendid sort.

Own-Root, Strong 2 to 3 Foot, \$1.50; 4 to 5 Foot, \$3.00.

AMONOE. A very pretty panicle of medium size, held erect. Single. A pure medium pink.

Own-Root, 3 to 4 Foot, \$1.00.

BELLE de NANCY. Double large; satiny rose, showing white towards the center. General color effect, deep pink.

Own-Root, Strong 3 to 4 Foot, \$1.00.

CAPITAINE BALTET. Single. Immense flowers of a rich purple lilac shade. Huge florets. Generally classed as the best lilac on the pink order.

Own-Root, 3 to 4 Foot, \$5.00.

COMPTE de ADRIEN MONTIBELLO. Double. When we have asked those who have large collections of lilacs to name the ten varieties they consider the best, Comte de Adrien Montibello is almost invariably named among them. A very double, very large, compact panicle of as near a good blue as can be found in lilacs.

Own-Root, 2 to 3 Foot, \$3.50; 3 to 4 Foot, \$5.00.

CONGO. Immense, single, wine-red. This is the best lilac of its color. I have asked many lilac experts for their choice of the twelve most beautiful lilacs. Almost without exception Congo is one of the first named. We place Congo among the six best of all lilacs. We have only a few to offer.

Own-Root, 3 to 4 Foot, \$5.00.

DE CAISNE. Single. Panicle medium size. Color a clear azure blue with darker blue in center of floret and petals edged bright pink. Very attractive. Mr. Wister, in his book on the Lilac, gives De Caisne the highest rating of any blue lilac.

Own-Root, Strong 2 to 3 Foot, \$5.00.

EDITH CAVEL. A very showy, pure milk-white; buds suffused cream and pale sulphur. Panicles extra large, long, and cone-shaped.

Own-Root, 2 to 3 Foot, \$5.00.

EMILE GENTIL. A bright cobalt-blue, a shade seldom found in lilacs. Dense clusters of extra large flowers. One of the very choice sorts.

Own-Root, 2 to 3 Foot, \$5.00.

EDMOND ABOUT. Double. A bush of large, strong, heavy foliage. Large panicle with large florets. Reverse of petals blue, fading to lavender as bloom opens. Very choice.

Own-Root, Strong 2 to 3 Foot, \$3.50; 3 to 4 Foot, \$4.00.

ELLEN WILMOT. Double. A large bush with very stout limbs and large, thick, light green leaves. The flowers come in immense panicles of creamy white, made up of double florets almost twice the size of those of any other double white. In our estimation, this is the greatest double white lilac and one of the three or four finest of all lilacs.

Own-Root, 3 to 4 Foot, \$5.00.

GEHEIMRAT SINGLEMARK. Single. A very deep blue; very striking and distinct color. If you are looking for an unusual lilac, here it is!

Own-Root, Strong 2 to 3 Foot, \$2.00; 3 to 4 Foot, \$3.00.

GEORGES BELLAIRE. Double. Large compact truss. A very pleasant shade of red-purple. A striking lilac.

Own-Root, Extra Fine 3 to 4 Foot, \$3.00.

GLOIRE de LORRAINE. A single. A crimson pink in the bud, but on opening it is a clear mauve. Trusses unusually large. A dwarf grower.

Own-Root, 3 to 4 Foot, \$1.00.

GRACE ORTHWAITE. A real pink lilac. Single. Upright spreading bush. Extremely thrifty. Panicles rather open, of medium size. Bloom comes well above the foliage. Such a distinct pink, it is noticeable from a long distance. We regard it the best of all pink lilacs.

Own-Root, 2 to 3 Foot, \$2.00; 3 to 4 Foot, \$3.00.

HUGO KOSTER. Double. One of the newer sorts and quite an improvement over older varieties of its color. Panicles very large, broad at base, and tapering nicely towards the top. Color a deep lavender with tracings of pink. Florets large and of great substance.

Own-Root, 2 to 3 Foot, \$2.00; 3 to 4 Foot, \$3.00.

HENRI MARTIN. Double. Extremely long graceful panicles. Beautiful blue lavender—a splendid new lilac.

Own-Root, 2 to 3 Foot, \$3.00; 3 to 4 Foot, \$4.00.

HIPPOLYTE MARINGER. Double. A large to very large, light pinkish-lilac; with long, open trusses.

Own-Root, 2 to 3 Foot, \$3.00.

JACQUES CALOT. Single. Very large panicles of rosy pink flowers with the individual florets very large.

Own-Root, 3 to 4 Foot, \$2.00.

JEAN MACE. Double. Bluish mauve. Very pretty lilac with neatly formed panicle.

Own-Root, Strong 2 to 3 Foot, \$2.00; 3 to 4 Foot, \$3.00.

JULES SIMON. Double. Immense flower with very large florets. Deep purplish blue to lavender.

Own-Root, Strong 2 to 3 Foot, \$3.00.

JULIEN GERADIN. Double. Large full flowers of a bright cobalt-blue. We have only five plants of this variety to offer this season.

Own-Root, 2 to 3 Foot, \$5.00.

KATHERINE HAVEMEYER. Double. A splendid new lilac which we have not had long enough to bloom on old bushes; but on 3 to 4 foot bushes, in the show beds, it gave us some wonderful deep blue panicles. Looks very choice to us.

Own-Root, Strong 2 to 3 Foot, \$2.00; 3 to 4 Foot, \$3.00.

LEON GAMBETTA. Double. Panicles of the greatest size. Buds and reverse of petals very pink, which gives the flower a general pink effect. Deep pink buds open into very double little rose-like florets of the faintest pink and lavender. We still say it's the finest of all lilacs and we want to emphasize this. There are many fine lilacs but we believe this is the most beautiful of all.

On Villosa Root, 3 to 4 Foot, \$5.00.

LEON SIMON. Double. Strong upright-growing plant with strong foliage. Panicles long, beautifully formed and held well up. Buds swell very large before they open and are a deep reddish pink on the reverse side. Florets open like little roses of a deep bluish lavender.

Own-Root, Strong 3 to 4 Foot, \$3.00.

L'ONCLE TOM. Double. Very dark red. It is hard to say just which is the darkest lilac. Most people say it's L'Oncle Tom. We have just 10 plants to offer.

Own-Root, 3 to 4 Foot, \$3.00.

MARECHAL LANNES. Semi-double. Large panicles with extra large florets. A peculiar shade of blue-violet. A prodigious bloomer even on very small bushes. Many lilac connoisseurs class this new one as among the very best. Distinct. Only 20 plants available.

Own-Root, 2 to 3 Foot, \$5.00.

MARX MICHELI. Double. A very compact panicle, composed of several smaller ones. A striking deep mauve.

Own-Root, 3 to 4 Foot, \$2.00.

MIRABEAU. Single. An early, free blooming, deep hellebore-red expanding

Own-Root, 3 to 4 Foot, \$2.00.

MISS FLORENT STEPMAN. Single. Tall upright grower; light, clean foliage; long, medium, compact panicles. Pure white with large beautiful florets.

Own-Root, 2 to 3 Foot, \$1.50.

MME. ABEL CHATNEY. Double. Beautiful, great, round, globe-shaped buds like Lily-of-the-Valley, which open very slowly into a very large bloom of pure white. A sort very much admired.

Own-Root, 3 to 4 Foot, \$1.00.

MME. CASIMER PERIER. Double. Creamy white. This is a very thrifty-growing variety. It produces a profusion of large panicles of very double, creamy white flowers. The bush is of medium height, compact, with bright, light green foliage. This is a splendid variety, but we have worked up a large stock, so we are making a special price. Everyone should plant one of these beautiful lilacs.

Own-Root, 2 to 3 Foot, \$1.00.

MONT BLANC. Single white. This beautiful lilac is one of the very best of the single whites, if not the best of all. The plant is compact and shapely in growth, with clean foliage. The panicles are large, rather compact, and of beautiful form. The florets are immense in size. Color a creamy white. Probably the best single white.

Own-Root, 2 to 3 Foot, \$1.50; 3 to 4 Foot, \$2.00.

OLIVER de SERRIES. Double. Tall bush, good grower. Large to very large open panicles. Large florets with large individual petals. A clear, clean, pleasing lavender. One of the extra choice lilacs. Almost in a class with Leon Gambetta.

Own-Root, 3 to 4 Foot, \$4.00.

PHILOMON. A very strong-growing lilac that is one of the most floriferous of all the purplish red varieties. Panicles literally cover the bush when in bloom. Panicles large, compact, pure purplish red.

Own-Root, 4 to 5 Foot, \$3.00.

PRESIDENT FALLIERES. A lavender rose marked with white. Panicles large, loose and showy. Very large. Only 10 plants to offer.

Own-Root, 3 to 4 Foot, \$5.00.

PRESIDENT LOUBET. Double. Red. One of the very choicest. Medium height plant. Panicles appear rather small just as the florets begin to open but they slowly develop as the florets continue to open until they become immense. A bright red in the bud stage, but showing considerable white on the inner edge of the opened petal. One of the very best.

On Villosa Root, 2 to 3 Foot, \$3.00; 3 to 4 Foot, \$5.00.

PRESIDENT POINCARE. Double. Very thrifty plant; grows into a large, heavy-limbed bush. Panicles large to very large, globular, made up of many lobes. Petals very

large, purplish red on outside, turning to lavender blue as they open. An immense and impressive bloom. Very striking.

Own-Root, 3 to 4 Foot, \$5.00.

PRESIDENT VIGER. Double. Tall, upright-growing bush of great vigor. Long, conical panicles, held erect well above the foliage. A beautiful flower of lilac shades, tinted with blue.

Own-Root, 2 to 3 Foot, \$1.00; 3 to 4 Foot, \$1.50.

REAUMUR. Single. Violet-carmine. Panicles of immense size, even on small plants. One 3 to 4 foot plant had one great bloom last season (1931) 16 inches through by 16 inches deep. Very showy. A sensational new lilac.

Own-Root, 2 to 3 Foot, \$5.00.

RENE-JARRY-DESLOGES. Double. Azure lilac-mauve with rose reflex. Panicles very large. A rare, delicate shade of blue.

Own-Root, 2 to 3 Foot, \$2.00; 3 to 4 Foot, \$3.00.

STATZGARTNER ROTHPLEZ. Single. An upright-growing shrub with long cone-shaped panicles. A rich red-purple. We have only 16 of these to offer.

Own-Root, 2 to 3 Foot, \$3.00.

THUNBERG. Double. Very large, long, slender spikes, generally two to the panicle. Buds and reverse of florets a violet mauve with a reddish appearance from a distance. Florets are large; open a light lilac, twisting and turning as they open, so that the color of the bud is intermingled with that of the inside of the petals. This makes, all in all, a very striking lilac which we chose as one of the best of the entire collection. Strong grower.

Own-Root, Strong 2 to 3 Foot, \$3.50; 3 to 4 Foot, \$5.00.

VIRGINAL. Single. A tall-growing variety that produces a very large open panicle of a rich creamy white color.

Own-Root, 2 to 3 Foot, \$1.00; 3 to 4 Foot, \$1.50.

VIOLETTA. Double. One of the very darkest lilacs. Deep bluish violet—a very unusual color. Large open panicle with very large individual florets. New. Very scarce. We have only 12 of these to offer.

Own-Root, 3 to 4 Foot, \$5.00.

VOLCAN. One of the most robust and shapely growing of all of the best lilacs. As near a true deep red as we have. Panicles which are very long, large, and shapely, come up well above the foliage. These panicles look rather open as they are in the bud stage but as they develop they open into one of the finest, most shapely, and largest of all these lilacs. We have but a few plants in this variety for sale, as the demand for it is so great from people who see it on our grounds when in bloom that we seldom have any left.

Own-Root, 2 to 3 Foot, \$2.50; 3 to 4 Foot, \$4.00.

WALDECK ROUSSEAU. Double. A very large, rather open panicle, composed of large, very double florets on many branches. Large flower and very fine. Deep violet fading lighter.

Own Root, 2 to 3 Foot; \$2.50; 3 to 4 Foot, \$5.00.



Oliver de Serries



Lilac Hedges in Full Bloom on Brand Peony Farms

Some Extra Early Lilacs —To— Prolong Your Blooming Season

The following lilacs are hybrids between different French Lilacs and the hardy early-blooming lilac, *Geraldii*, found growing wild in north China. These lilacs are all from three days to a week earlier than the regular run of French Lilacs and thus prolong the lilac season by that length of time.

BERRYER (On *Villosa*). Semi-double. A beautiful clear mauve with deeper shadings toward red. One of the very choicest of the early hybrids; distinctly different; also the latest of this new line of lilacs. Exceedingly pretty.

On *Villosa* Root, 3 to 4 Foot, \$3.00.

BUFFON. Single. One of the very earliest of the early hybrids. Individual florets large and of fine substance.

We think *Buffon* very choice. Color is a rich delicate mauve-pink of the finest quality. Panicles very large.
Own-Root, 3 to 4 Foot, \$5.00.

LAMARTINE. Single. Earliest to bloom of all the new early hybrids. Immense open panicles with very large florets. An even shade of pink.

Own-Root, Strong 3 to 4 Foot, \$3.00.

PASCAL. Single. Early. Very large thrifty bush. Medium late. Lacy delicate pink. Panicles come in great open plume-like bouquets. Very tall growing lilac.

On *Villosa*-Root, 3 to 4 Foot, \$2.50.

VAUBAN. Double. Another of the early hybrids. The most rapid grower in all our list of lilacs. Large plume-like panicles; delicate pink.

Own-Root, 3 to 4 Foot, \$2.50.

SPECIAL PRICE ON EXTRA EARLY LILACS

One each of the above five early lilacs:

—List Price \$16.00—

Collection Price **\$10.00** You Save \$6.00

Final Lilac Collection

Naturally, the law of average cannot possibly regulate the demand for all lilacs so evenly as to prevent a surplus of some and a shortage of others. It is nothing unusual to find that the varieties in which we have a surplus include the very finest. To keep our stocks arranged in balanced quantities, we are willing to send these out at a special low price which provides for this Final Collection Offer:

Three Fine French Lilacs, All Different Colors, All Labeled, Our Selection

\$2.50



President Hayes Lilac Used as a Screen

Lilacs for Hedges and Screens

COMMON LILAC. As a trimmed hedge there is no shrub that does better in the north than the common lilac. Where a low trimmed hedge is desired, the Common Purple is generally used. For tall untrimmed hedge, either Common Purple or Common

White is planted as desired. There is no danger of the hedge, or any part thereof, ever killing out. We have a very large stock in both Common Purple and Common White at very low prices:

Common Purple, 2 to 3 Foot: 5 to 10 plants @ 25c; 10 or more @ 20c.
 Common Purple, 3 to 4 Foot: 5 to 10 plants @ 30c; 10 or more @ 25c.
 Common Purple, 4 to 5 Foot: 5 to 10 plants @ 60c; 10 or more @ 50c.
 Common White, 2 to 3 Foot: 5 to 10 plants @ 30c; 10 or more @ 25c.
 Common White, 3 to 4 Foot: 5 to 10 plants @ 35c; 10 or more @ 30c.

Mme. Casimer Perier

Mme. Casimer Perier is the greatest double white lilac for tall hedge purposes. A hedge of this variety grows to a uniform height. In blooming season it is absolutely covered with a mass of pure creamy white throughout its entire length.

Own-Root, 2 to 3 Foot: 10 for \$5; 20 for \$ 8.
 Own-Root, 3 to 4 Foot: 10 for \$6; 20 for \$10.
 Own-Root, 4 to 5 Foot: 10 for \$8; 20 for \$15.

We can supply Charles Tenth in a red and President Carnot in a lavender at the same price as Mme. Casimer Perier.

Special Lilac Offers

Japonica

Single. A very fine lilac where a small tree is wanted in the rear corner of a lot or as a small lawn tree. Grows into a very clean and trim tree about 20 feet high; heavy, dark green, glossy foliage; great plume-like panicles of creamy white.

Own-Root, Strong 2 to 3 Foot, \$1; 3 to 4 Foot \$1.50.

President Hayes

President Hayes is one of the best of the selected Persian Lilacs. Panicles are very large, in great quantity, and carried well on the outside of the bush. A great variety for large masses and long screens. We grow it on its own root in great quantity and offer it at very attractive prices.

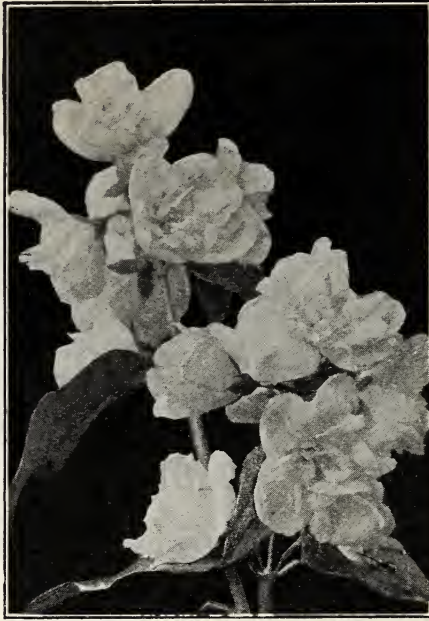
Own-Root, Strong 3 to 4 Foot 50c; 10 for \$3.50;
 50 for \$15; 100 for \$25.

Villosa

Villosa is another excellent lilac for both large and small plantings. Grows into a very large shrub, about 10 feet high, with great, large, heavy, waxy-like leaves. Comes into bloom when all other lilacs are gone. Panicles large, broad, plume-like, and of a delicate pink color.

Own-Root, Strong 3 to 4 Foot, \$1.00; 10 for \$5.
 Choice Select 4 to 5 Foot Specimen Plants, \$2.50; 10 for \$15.

See Sensational Lilac Offer, Including 10 New Named Varieties, on Outside Back Cover.



Philadelphus Virginal

Improved Philadelphus Mock Orange or Sweet Syringea

Wonderful improvements have been made in late years in that grand shrub, the Philadelphus; or, as it is better known to us, the Sweet Syringea or Mock Orange.

The Lemoines of France, the same men who produced the most of our new lilacs, have also produced these beautiful new Philadelphus.

The older varieties are single. The new ones come in singles, semi-doubles and doubles. They are more beautiful than the older sorts, as their blooms are larger, borne in greater profusion, and of more exquisite form. These different Philadelphus may be selected as to their final growth in sizes to suit almost any want. Some are real dwarf, others are of

medium height, while still others grow into plants eight or ten feet high. Most of them are very sweetly scented. Often a single bush, with its beautiful bloom, will scent the air of an entire city block.

Philadelphus bloom after the large white spirea are gone. They are in bloom with the peony, being wonderful to use with this flower in making up beautiful baskets.

More Philadelphus should be used in shrubbery plantings. They are one of our most satisfactory shrubs, and far surpass in beauty many of the shrubs more commonly used. Our stock contains all the newest sorts.

Our List of Philadelphus

ALABATREE. A very showy variety; large, dense panicles of pure white flowers. A compact, bushy plant of medium height. When fully grown this variety is about five feet high.

Strong 2 to 3 Foot, 50c; 3 to 4 Foot, 60c.

AUREA. Grown more for the foliage than the flowers. Covered all summer with intense yellow foliage. Best of our yellow foliage plants.

2 to 3 Foot, 60c.

BANNIER. Upright growing, attaining a height of about 5 feet. Good dark green foliage. Large semi-double blooms, nearly pure white, usually in clusters of 5 or 6. Very sweet; one of the most profuse bloomers. Very desirable.

2 to 3 Foot, 60c; 3 to 4 Foot, 75c.

BOUQUET BLANC. Develops an upright shapely bush with dark rich foliage. Flowers come in clusters; large, pure white. Very sweetly scented. One of the hardiest and most dependable bloomers. Extra choice.

2 to 3 Foot, 50c; 3 to 4 Foot, 60c.

From

Post Office

County

State

PLACE
STAMP
HERE

Brand Peony Farms, Inc.

Faribault,

Box 408

Minnesota

DAME BLANCH. A dwarf variety growing to about 2 to 3 feet. Dense masses of medium sized, pure white, intensely sweet-scented flowers.

2-foot bushes, 50c.

GLACIER. We consider this variety one of the very best of the newest sorts. The flowers are wonderfully attractive in appearance; double blooms are produced in large clusters of 6 to 8, of a rich cream color. Grows about five feet high. One of the choice kinds.

2 to 3 Foot, 50c; 3 to 4 Foot, 60c.

MT. BLANC. A medium growing variety; wonderful as a hedge to grow on a line between lots. Flowers large, pure white, semi-double. Produced in great profusion. One of the most prolific of all.

2 to 3 Foot, 50c; 3 to 4 Foot, 60c.

NORMA. Strong growing; reaches a height of eight feet. To name the most beautiful of these wonderful Philadelphia, if that be possible, we would be inclined to choose Norma. Flowers of great size, single, with a rich waxy-like appearance.

2 to 3 Foot, 50c; 3 to 4 Foot, 60c.

OPHELIA. Long arching branches, covered with great masses of large glistening white flowers with white gold-tipped stamens. Very fragrant.

2 to 3 Foot, 50c; 3 to 4 Foot, 60c.

PYRAMIDAL. A medium tall variety. Bush grows upright and slender. Nice to fit into a small corner. Large single white. Very sweetly scented.

2 to 3 Foot, 50c; 3 to 4 Foot, 60c.

VIRGINAL. Double. White. Everblooming. Everything considered, this is the most sensational of all the Philadelphia. In fact, we regard it the most valuable acquisition to the flower garden of recent years. The bush is a moderately strong grower, with us attaining a height of six to seven feet. Rather open sparse foliage to make the wonderful blooms all the more conspicuous. Flowers pure white, double, often two inches in diameter. Begins to bloom about June 15th with us, and blooms profusely for about three weeks. Then it rests a few weeks and starts to bloom again, continuing with a small amount of bloom until frost.

2 to 3 Foot, 50c; 3 to 4 Foot, 60c.

Extra Select Specimens, 3 to 4 Foot, \$1.00.

VOI LACTIA. One of the very newest of the Philadelphia. Flowers very large, waxy, pure glistening white. Sweetly scented. Bush large, with thrifty light green foliage. Flower and plant both fine.

3 to 4 Foot, 75c.

Special Philadelphia Offer

One each of the 12 kinds listed, a total value of \$7.40:

Collection Price..... **\$5.40** You Save \$2.00

Philadelphia for Hedges

Almost all varieties of Philadelphia make wonderful plants to use as tall screen hedges, as backgrounds, or between lots. Write for prices in special quantities.



Side View of Philadelphia in Full Bloom and Close-Up of Virginal



Planting of Hardy Phlox

Phlox

No other flower fits into the late color scheme of the garden as well as the perennial phlox. Starting to bloom in midseason, they carry loads of the most brilliant color far into the fall or until touched with frost.

Phlox come in many colors; from the purest white through the many shades of pink, lavender, red, purple, to the deepest crimson.

For best results, the soil should have well rotted

manure worked in, and the planting should be in a fairly sunny location. Water heavily during dry spells. If lower leaves turn rusty and dry up during the summer, water and spray the plants heavily with cold water and dust with powdered sulphur such as is used to control black spot on roses. If the first flower spikes are cut off as soon as the flowers fall and the plants are well watered, a second setting of bloom will come on and continue late into the fall.

Our Phlox Collection

There are many new phlox coming out all the time, but few of these are any better than those which have been longer tried. We buy the new ones as they are offered and try them out in our gardens. We save the few really good ones and discard the rest. We offer at all times what we consider the best in phlox.

NOTE—When you order phlox from us you get a real Brand Peony Farms plant. Our phlox plants are of the same quality as our Brand Division peony roots. Our plants are selected No. 1, one-year field-grown plants.

Do not compare the prices for our phlox plants with cheaper prices where orders are filled with plants commonly called Baby Phlox Plants.

PRICES FOR PHLOX, ALL POSTPAID

1 Phlox of any one variety.....	\$0.35
3 Phlox of any one variety.....	.75
6 Phlox of any one variety.....	1.25
12 Phlox of any one variety.....	2.00

In collections A, B, and C, we are offering three equally good combination values. We have tried to arrange the varieties in each of these three collections so that one is just as desirable as the other. Each collection consists of ten first class sorts; all seasons, all colors. We will send any one of these collections postpaid for \$2.25, any two to one address for \$4.00, or all three collections for \$5.50 postpaid.

Collection A

BEACON. A fine brilliant bright cherry red. Trusses of most beautiful form.

EUROPE. A large beautifully formed flower; great white florets with carmine eye.

FLORA REIDY. A pure rich white with large florets of beautiful form and substance.

JULES SANDEAU. A very large flowering pure pink. One of the finest.

MILLY VON HOBOKEN. A pure soft pink self color. Grows tall, thrifty and branching. Large well shaped flower. A splendid new one.

MISS LINGARD. An early white phlox with waxy leaves and glistening petals. The cut-and-come-again phlox. Very much used by florists for cut flowers.

PANTHEON. A clear deep carmine-pink with a faint halo. One of those dependable varieties.

PROF. VIRCHOW. Large, flat flowers; bright carmine overlaid with orange scarlet.

RIVERTON JEWELL. A beautiful mauve-rose, made very striking by a large brilliant carmine-red eye.

SPECIAL FRENCH. A wonderful blush pink with a salmon eye. A profuse blooming, attractive new phlox with immense trusses.

Collection B

Collection C

BRIDESMAID. Large, beautifully formed white, with carmine eye.

ECLAIREUR. A purplish crimson with white aureole. One of the phlox that seldom kills out.

ENCHANTRISS. A beautiful salmon pink. Looks very much like Elizabeth Campbell, but a much better grower.

FRAU VON LASSBERG. The purest snow white in cultivation, large open truss, wonderful cut flower.

R. P. STRUTHERS. Rosy carmine with claret eye. Wonderful variety as it stands up so well in hot sun.

RYNSTROM. Very large trusses of rosy-pink flowers. Shade of Paul Neyron Rose. Very free flowering.

SIEBOLD. Orange scarlet with red eye. Very thrifty, profuse bloomer. Immense spikes and many of them.

THOR. Great trusses and immense florets. Deep salmon pink with aniline red eye. A charming variety.

VON HOCHBERG. A medium tall growing, very thrifty sort. Deep brilliant red. One of the very best of the Red Phlox.

WIDAR. Very large individual florets of lavender purple with large white center. Large panicles; very attractive.

CHAMPS ELYEES. Very large trusses and florets in a most pleasing dark purple.

DEUTSCHLAND. Flowers of moderate size of intense fiery scarlet. The most dazzling phlox we have ever seen.

ELIZABETH CAMPBELL. A very large, soft, even, salmon pink with distinctly lighter halo. Often sought after most of all.

ETHEL PRICHARD. A fairly tall-growing new phlox, with large panicles of individual florets of the greatest size. A delightful French-mauve. Almost a blue.

FERDINAND CORTEZ. A most pleasing deep rose-pink with salmon shadings towards the center.

FIREBRAND. A brilliant orange scarlet. A very free flowering variety of medium height. One of the most brilliant phlox known.

MRS. JENKINS. One of the best whites ever produced. Beautiful large trusses of perfect form with large beautiful florets. Pure white. Early.

PRIME MINISTER. A great large white with a large crimson red eye. Eye very prominent.

RHEINLANDER. Mottled salmon-pink, intensified by a distinct claret-red eye. Flowers and truss of large size.

SUNSET. A distinct phlox among the new ones. A beautiful shade of salmon-red.



Enchantress

New Phlox

ALPHA. A beautiful new phlox with the same long spikes and the same waxy leaves as Miss Lingard; also blooms at the same time. Color a bright mauve self. Cut and come again.

BETTY LOU. Bright orange-scarlet with claret center; medium height, with many lateral branches affording a long season of bloom.

COMUS. Clear pink, overlaid bright orange-scarlet; florets large; medium height, the plant being well branched from the ground. This new variety is similar in habit to Jules Sandeau, blooming somewhat later in season and more attractive in color.

COQUELICOT. One of the most brilliant of all phlox. A bright piercing scarlet.

GEN'L VON HEUTZ. A desirable new phlox with a peculiarly pleasing habit of growth. Large florets and trusses of a pleasing salmon red.

J. H. KOEHLER. A new phlox from Mr. Fryer. A very delicate shade of true salmon pink.

MIA RUYS. A low-growing, much branched phlox, not over 18 inches high. Extra large flowers and trusses of a pure waxy white.

MRS. HARDING. A new deep rose pink, shaded salmon. Large trusses of beautiful form.

MRS. SCHOLTEN. A free flowering phlox with very large trusses. Rich, velvety, deep salmon pink.

VESTA. A very thrifty new phlox. Early. Bright geranium red, with deep carmine center.



Milly von Hoboken



Frau von Lassberg

Any three of the above new phlox for \$1.00 post-paid. The entire collection of ten for \$2.75 postpaid.

Phlox Subulata Atropurpurea

(NEW)

Much better, brighter and richer than the old varieties

Here is a distinctive new introduction which adds much to the dignity and desirability of the creeping phlox group. Its lavish flower expanse stands out pre-eminently in its class during the spring season—the rich wine-color of B. Compte, slightly darker at the eye.

Strong clumps, 50c.



Siebold Phlox



Regal Lily

TIGER LILY (Double). A handsome lily of easy culture. Produces great quantities of large, showy, brilliantly colored flowers in August and September. Develops bold branching heads, each often carrying twenty large, rich,

Lilies

Plant in any light sandy or loamy well-drained soil. Well rotted cow manure should be thoroughly mixed into the soil used for planting; then top dress with the same afterwards. Do not use fresh manure. Plant 5 to 6 inches deep in a pocket of clean sand. Mulch in fall with leaves or straw.

NOTE:—Wherever lily bulb sizes are given, it means the circumference. All lily prices are **POST-PAID**.

CANDIDUM. The Madonna Lily. Beautiful pure white, delicately scented flowers, borne in large numbers on stems three or more feet high. Hardy in southern Minnesota. A strikingly beautiful flower. Ready in September.

Large bulbs 35c; 3 for \$1.00; 12 for \$3.50.

ELEGANS. One of the hardiest of all lilies. From Japan. Rather dwarf. Thrives in almost any location. The flowers are large, on erect stems; various shades of yellow, orange and red. The different varieties range in height from 1½ to 2 feet. Never kills out. Blooms in June and July. Mixed.

Large bulbs, Each 30c; 10 for \$2.50.

REGALE (The Regal Lily). The hardiest of all the really fine lilies. The most sensational lily added to our gardens in many years. Can be grown practically anywhere in the United States in well drained soil. White, streaked with a delightful coral pink on the outside of petals. Throat heavily touched with gold. Perfume exquisite.

3- to 4-inch Bulbs, Each 15c; 6 for 75c; 12 for \$1.00.

4- to 5-inch Bulbs, Each 20c; 6 for 90c; 12 for \$1.75.

5- to 6-inch Bulbs, Each 25c; 3 for 60c; 12 for \$2.25.

6- to 7-inch Bulbs, Each 30c; 3 for 70c; 12 for \$2.75.

7- to 8-inch Bulbs, Each 50c; 3 for \$1.25; 12 for \$4.50.

TENUFOLIUM (Coral Lily). This is a splendid lily to plant for mass effect or in rock gardens. The flowers are bright scarlet, about an inch in diameter, and produced in great quantities. The foliage is fern-like. This variety grows from one to two feet high.

Each 25c; 3 for 70c; 12 for \$2.50.

orange-scarlet flowers, spotted crimson brown. This is the double type of the old tiger lily and is much prettier than the single. The hardiest lily grown. Never dies out.

Large bulbs, Each 25c; 10 for \$2.00.

Lily Collection

1 bulb each of the above 5 kinds—a regular value of \$1.40—for \$1.25 **POSTPAID**.

Delphinium

The Delphinium or Perennial Larkspur is one of the most indispensable plants in the garden. It works nicely into so many places. It starts blooming in June and continues throughout the season until frost, providing the old spike is cut off and the root well watered as soon as the first bloom falls. New shoots then will soon appear and the second crop of blooms will quickly follow. Delphinium should be planted in full sun in mellow soil, enriched with well-rotted manure. Water as soon as planted.

Wrexham Hollyhock Strain

Our plants this fall will be in assorted colors of this wonderful English strain. They will be sent out at the proper planting season.

12 strong 2-year field-grown plants in assorted colors, \$5.25 Postpaid.

1 white, 1 light blue, 1 dark blue—3 strong 2-year plants, \$1.50 Postpaid.



Delphinium Planting

Oriental Poppies

For real gorgeousness—something remindful of the warm, extravagant colors of the East—nothing in all the world of flowers can compare with the Oriental Poppy. Coming with the early peonies, they give the garden a touch no other flower can give.

The Oriental Poppy blooms, ripens its seed pods, and then the top dies to the ground. The root remains perfectly dormant for several weeks and then starts a new growth. It is during this dormant period that it is most safely moved; generally during late August and September. We fill our oriental poppy orders during that period. Please do not order oriental poppies after September 15th.

We supply a large root. We do not handle the small oriental poppy roots sold at cheap prices. The illustration shown at right does not do justice to the poppy bloom. The dark heavy center of the flower photographed in such a way as to leave the beautiful petals almost entirely subdued. It is the brilliant color and beautiful design of these glorious petals which form the real beauty of the Oriental Poppy.

BEAUTY OF LIVERMORE. A splendid oriental poppy with good stiff stems. Immense, deep red flowers. Blooms later than Wurtembergia.
Each \$1.00.

LULA A. NEELEY. When this wonderful poppy first came out, it sold for \$15 a root. Stout stems. Medium sized, cup-shaped, brilliant red flowers.
Each \$1.00.

MRS. PERRY. Where the red or orange will not blend well with other flowers, use Mrs. Perry—a beautiful large salmon pink.
Each \$1.00.

OLYMPIA. A new semi-double poppy; bright orange-scarlet. Very nice. Ten days earlier than the rest in the list.
Each \$1.00.

ORANGE QUEEN. An early variety. Blooms of greatest size. Stout straight stems. Brilliant deep orange.
Each \$1.00.



Oriental Poppy

PRINCESS VICTORIA LOUISE. Large, soft, lilac rose. Beautiful. One of the finest named sorts.
Each \$1.00.

WURTEMBERGIA. We consider this the best red oriental poppy. It has a beauty of color together with immense size and richness seldom seen in any flower.
Each \$2.00.

1 strong root from each of these
7 BEAUTIFUL VARIETIES
—\$5.25 Postpaid—



Bleeding Heart

Bleeding Heart

This is one of the old time flowers from Grandmother's Garden, of which we will never tire. The flowers, which are pink with a white center and heart-shaped, come in long graceful drooping racemes. Foliage is fern-like and dainty. A valuable flower for planting in the shade. Very hardy and lives year after year. Grows one to two feet tall and blooms in May.

Each 50c; 12 for \$4.00.



Tulips

We are offering none other than strictly first size tulips. This assures large uniform blooms next spring. Do not be confused by cheaper prices on bulbs. This can only mean smaller bulbs; therefore smaller and less satisfactory blooms.

All tulip prices are POSTPAID.

Darwin Tulips

Long-stemmed, giant-flowering tulips in all colors; late blooming. For beds, among shrubs, for the hardy border, or as foundation planting.

Rainbow Mixture: 45c doz.; \$1.50 for 50; \$2.75 for 100.

Darwin Tulips—Clara Butt

	1 Doz.	50	100
AFTERGLOW. 26 inches high; deep rosy-orange, with salmon-tinted edge.....	\$.075	\$2.75	\$5.25
BARONNE DE LA TONNAYE. 26 inches high; vivid rose-pink55	1.95	3.75
BARTIGON. 22 inches high, fiery crimson-scarlet.....	.55	1.95	3.75
BLUE AMIABLE. 24 inches high; clear lavender.....	.75	2.75	5.25
CENTENAIRE. 26 inches high; rich violet-rose.....	.65	2.45	4.75
CITY OF HAARLEM. 28 inches high; brilliant vermilion-scarlet90	3.50	6.50
CLARA BUTT. 20 inches high; clear salmon-pink.....	.45	1.50	3.50
DREAM. 26 inches high; soft mauve and heliotrope65	2.45	4.75
EUROPE. 24 inches high; fiery salmon-scarlet.....	.55	1.95	3.75
FARNCOMBE SANDERS. 25 inches high; rose-scarlet55	1.95	3.75
FAUST. 24 inches high; deep pansy-violet.....	.75	2.75	5.25
GRETCHEN. 22 inches high; pale rose.....	.45	1.50	2.75
KING HAROLD. 24 inches high; deep oxblood-red.....	.65	2.45	4.75
LA TRISTESSE. 24 inches high; slaty-blue.....	.65	2.45	4.75
LA TULIPE NOIRE. 24 inches high; almost black.....	.65	2.45	4.75
MADAME KRELAGE. 28 inches high; bright lilac-rose65	2.45	4.75
PRIDE OF HAARLEM. 26 inches high; brilliant rosy-carmine45	1.50	3.50
PRINCESS ELIZABETH. 26 inches high; rich deep pink65	2.45	4.75
PROFESSOR RAUWENHOFF. 24 inches high; brilliant cherry-red65	2.45	4.75
WM. COPELAND. 22 inches high; mauve.....	.65	2.45	4.75
REV. EWBANK. 20 inches high; lavender-violet.....	.55	1.95	3.75
WILLIAM PITT. 22 inches high; bright glowing carmine65	2.45	4.75
WHITE QUEEN. 24 inches high; white.....	.65	2.45	4.75

May Flowering or Cottage Tulips

Similar to the Darwins; very graceful in appearance, the blossoms being carried on long, stout stems. As there is no yellow Darwin, the May-Flowering Tulips of this color are planted with the Darwins where yellow is desired.

Rainbow Mixture: 55c a dozen; \$1.95 for 50; \$3.75 for 100.

	1 Doz	50	100
BOUTON D'OR. Golden yellow.....	\$.055	\$1.95	\$3.75
FAIRY QUEEN. Heliotrope and amber-yellow65	2.45	4.75
INGLESOMBE PINK. Soft rose-pink...	.55	1.95	3.75
INGLESOMBE SCARLET. Scarlet; black base65	2.45	4.75
INGLESOMBE YELLOW. Rich yellow.65	2.45	4.75
MOONLIGHT. Primrose-yellow65	2.45	4.75
PICOTEE. White; pink edge.....	.55	1.95	3.75
THE FAWN. Fawn with rose.....	.65	2.45	4.75

Breeder Tulips

The Darwin's greatest rival. As tall and stately as that superb variety and even larger in size. Wonderful color combinations in harmonious blendings of purple and bronze, yellow and bronze, gray and lilac, old-gold and maroon. Late to bloom; flowers are excellent for cutting, many of them being sweetly scented.

Rainbow Mixture: 65c a doz.; \$2.45 for 50; \$4.75 for 100.

	1 Doz.	50	100
APRICOT. Bronze-buff, shaded apricot...\$.075	\$2.75	\$5.25	
BRONZE QUEEN. Golden bronze.....	.75	2.75	5.25
CARDINAL MANNING. Wine-red,orange .75	2.75	5.25	
GOLDEN BRONZE. Golden yellow, bronze .75	2.75	5.25	
LOUIS XIV. Bluish-purple, golden bronze .85	3.25	6.25	
PANORAMA. Terra cotta, mahogany....	.75	2.75	5.25

DOLLAR SPECIALS

(All these collections postpaid in U. S. A. east of the Rockies.)

\$1 **PEONY** **\$1**
Collection C

This collection consists of four fine peonies in four different colors—Ambassador (white), Umbellata Rosa (light pink), Sunrise (dark pink), The Indian (red). A beginner's collection of four good kinds for those who feel they can't spend much money for peonies this year. Last year these four sold for \$4.00.

Now all four for only \$1.00 Postpaid

\$1 **FLOWERING PLUM** **\$1**
The Rose Tree of China

That beautiful shrub seen all over the northern part of the country early in the spring. Bushes covered with little pink double roses before the leaves come. Prunus Triloba or The Rose Tree of China—prettiest shrub of all for the north.

3 nice strong bushes—total value \$1.50— all for only \$1.00 Postpaid.

\$1 **LILIES** **\$1**
Collection C

We have some beautiful lily bulbs in Elegans, Double Tiger, Tenuifolium, and Regale, in sizes smaller than those listed elsewhere in this catalog—small bulbs, yet all in sizes that will bloom next year:

2 Elegans	3 Tenuifolium
2 Double Tiger	3 Regale

10 blooming-size lily bulbs for only \$1.00 Postpaid.

\$1 **PHLOX** **\$1**
Offer Extraordinary

We have many beautiful phlox of which we have lost the names. They are all of the varieties listed in our catalog. In all colors—red, lavender, white, white with a red eye, apple blossom pink, salmon pink, purple, etc.

We will send 8 beautiful phlox, all different—a total value of \$1.60.

All for \$1.00 Postpaid

\$1 **IRIS** **\$1**
Collection C

In many good and beautiful irises, we have a larger stock than we know we will regularly sell. These come in all colors. Many people do not care for the names, just so they get nice flowers. We will send 25 irises—all different, all colors, all named varieties, not labeled,

For only \$1.00 Postpaid

\$1 **PHLOX** **\$1**
Collection E

To make this offer now, we have grown large quantities of six different phlox:

1 each of Widar (lavender and white), Van Lassburg (pure white), Africa (rich red), Bridesmaid (white with red eye), Pantheon (rose pink), Eclairneur (purplish rose).

1 strong plant each of all 6 for only \$1.00 Postpaid.

\$1 **"BIG LITTLE 3"** **\$1**
Collection

We have some beautiful 1-year little flowering crabs, purposely grown for this collection:

HOPA—The red flowering crab, hardy in Minnesota. Covered all over with deep rose-colored blossoms.

DOLGO—Hanson's hardy crab. Grows into a beautiful ornamental tree. Covered in fall with great loads of blood-red crabs—fine for jelly.

FLOWERING PLUM—Beautiful shrub of The Rose Tree of China.

1 each—3 beautiful flowering trees—for only \$1.00 Postpaid.

\$1 **ASTERS** **\$1**
Blooming in Late Fall

The fall-blooming asters give a touch of real color to the garden long after other flowers are gone. After the first frosts have nipped all else, these beautiful asters are still there:

CHARM—double violet.
 ERICA—clear pink.
 FELTHAM BLUE—anilene blue
 ROSEUM SUPERBURN—almost red.
 EMPEROR—large blue.

1 each of the 5 varieties—a total value of \$1.50.

All for \$1.00 Postpaid

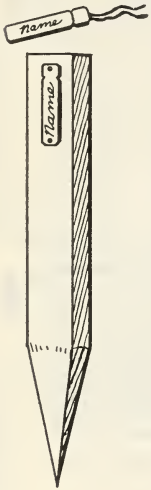
—Collection Offer No. 17—

You may have one each of the above eight special collections, a super-value:

Only **\$7.00**

(Postpaid Anywhere in U. S. A. East of the Rockies.)

Department of Gardeners' Equipment and Supplies



Copper Wired Labels

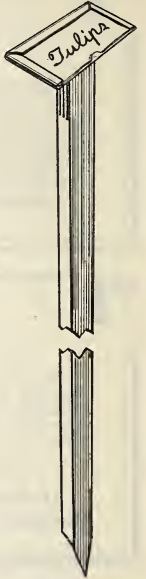
A low-priced yet well-made wooden label. Fine for use in marking any kind of flowers when in bloom, such as Gladiolus, Dahlias, Peonies, etc. We use this label ourselves. 3½-in. by ½-in. White pine, painted and copper wired. The best low-priced label.

100 for 40c; 1000 for \$3.00 Postpaid.

Peerless Plant Marker

Where one is using garden markers for choice plants, show beds, etc., there is nothing better than the Peerless. Very neat and very durable. Name plate is set at an angle so it is easy for anyone to read without lifting or pulling up the stake. Carries name card 1½x 3¼ inches. (See illustration at right.)

12 for \$2.00 Postpaid.



Wooden Garden Stake

A splendid inexpensive stake with which to mark rows of flowers or individual flowers in the garden. Painted white pine, 12"x1½" wide. A neat stake that will last a year; and then, if repainted, it will last several years more.

100 for \$2.50 Postpaid.

Large Field Stakes

(See illustration at upper left.) We can supply the stake that we use in staking all our peony fields. A pine stake 24" long by 1½" square. We use these stakes by the thousands and find them the most satisfactory for general field use. Uniform and nice looking. These prices for the stakes do not include the label as shown in the cut, which is described and priced separately above:

Unpainted in the rough, 100 for \$2.50; 1000 for \$20.00. Painted 2 coats best white paint, 100 for \$5.00; 1000 for \$45.00. (By Express or Freight.)

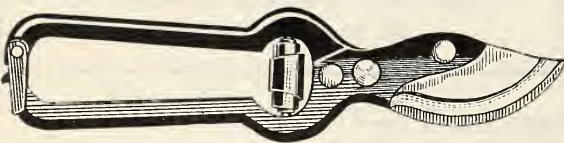
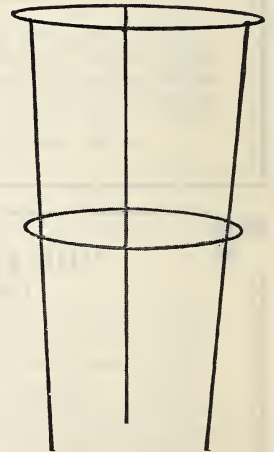
"Rigid" Peony Supports

Choice peonies should be protected by good supports so that the blooms will not be beaten to the ground in a wind storm or heavy rain.

We can supply the "RIGID" Peony Support (shown in the illustration) which is the kind we buy for our own use. This support is well made of 3-gauge galvanized wire—24-inch tops—48 inches tall.

Prices f. o. b. Faribault or factory: Each 60c; 12 for \$6.00.

Shipped by freight or express. If ordered ahead of time, they can go by freight at a good saving. Write for prices where larger quantities are wanted.



Pruning Shears

We carry two good styles of pruning shears—both with malleable iron handles and steel blades. The same shears that we use in our own work.

Standard, 9 inches long, 95c Postpaid.

Rose and Garden Shears, 6 inches long, 85c Postpaid.



Dividing Knife

We have tried all kinds of knives for dividing, and find this the handiest and best. An ideal knife for all kinds of garden and nursery work. Razor Steel Blade fastened into selected cocobolo handle by two brass rivets.

Each \$1.00



To Make PLANTS THRIVE

We Encourage
A Liberal Use

—of—

Dunlop Imported Granulated Moss Peat

Used as a moisture-holding mulch—to keep down weeds—to lighten stiff, heavy soils—to aerate the plant roots and to improve the general fertility of the soil—DUNLOP MOSS PEAT makes an excellent all-round soil medium for lawn, garden, shrubs, plants and flowers.

To insure delivery in good order, DUNLOP MOSS PEAT is first thoroughly dried and then securely packed in lined burlap bales—20 bushels of standard size and bulk, with minimum moisture content. (Shipping weight approximately 160 pounds). A bale covers about 350 square feet one inch deep. Can be purchased also in half-bale quantities. Complete directions for various uses will be furnished with each shipment. Prices f. o. b. Faribault or Minneapolis:



1/2 Bale.....	\$ 2.75
1 Bale.....	5.00
3 Bales.....	14.25
5 Bales.....	22.50

We grow many lines of nursery stock not described in this catalog. At right is a field of *Spiraea Van Houttii*.



TO KILL ANTS

and

Plant Insects

—We Recommend—



Both for chewing and sucking insects as well as ants, here is a powerful, double-action insecticide. While EVERGREEN kills all plant-destroying insects, it will not injure even the most tender foliage—non-poisonous to humans or pets. May be used on fruits and vegetables before eating. Easy to mix and apply. So concentrated that one ounce makes six gallons of spray for use on plant lice or two gallons of spray for the killing of ants. The necessary strength of each solution depends on the purpose for which it is used. Complete directions and dilution table furnished with each bottle. List prices do not include postage.



1-oz. bottle 35c; 6-oz. bottle \$1.00; 1 pt. \$2.00; 1 qt. \$3.50; 1 gal. \$11.50.

Flowers of Sulphur

We recommend Flowers of Sulphur, especially for use in dusting rose bushes for Black Spot. Equally good to ward off Botritis from the peonies. Splendid for any fungus disease. Genuine Flowers of Sulphur:

1 lb. 40c; 3 lbs. \$1.00 Postpaid.

Seeds

During the course of the season as the seeds of the different flowers mature, we gather quantities of these seeds from our very choicest specimens for our own plantings. We always have some of this seed left over which we offer to our customers, who can therefore depend upon always receiving absolutely fresh seed from us. Planting instructions will be found on the seed packets.

Long Spurred Aquilegia

(Columbine)

Mrs. Scott Elliott Strain Aquilegia is easy to establish and thrives in almost every garden. We have chosen our seed from our own planting which includes practically every color.

25c a packet.

Delphinium Seed

Fresh seed will be sent out in July or August. It should be planted immediately on arrival. Order your seed now and it will be sent to you just as soon as the new crop is ripe. Delphinium seed loses its vitality very fast and the sooner it is planted after you get it, the better. Seed collected from good select specimen spikes, all shades, all strains.

Extra Select Seeds, \$1.00 a packet; (about 200 seeds).

Coreopsis

(Lanceolata Grandiflora)

2 feet. Blooms from June to October. Large orange-yellow flowers, carried on long, graceful stems. The best all-yellow cut flower that blooms continuously.

Seed, 1/4 oz. 25c; packet 10c.

Gaillardia

(Blanket Flower)

2 feet. Blooms June to October. Another continuous-blooming perennial. Large golden-yellow flowers with variegated markings of red.

Seed, 10c a packet.

Hollyhock

Nothing so fine for a background for the garden as a plentiful planting of gorgeous hollyhocks. Our seed will be freshly gathered from plants carrying the most gorgeous, deep brilliant colors and also from other plants of the most delicate shades. Hollyhocks are grown best by scattering the seed in the late summer, just where you want them to grow; then don't disturb the plants.

Finest mixture, all shades, regular packet 15c; large packet 25c.

Lily Regale

We have a large blooming of Regal Lily this season and will offer the seed to our customers. Seedling bulbs will flower the second year.

About 250 Seeds to a packet, 25c.

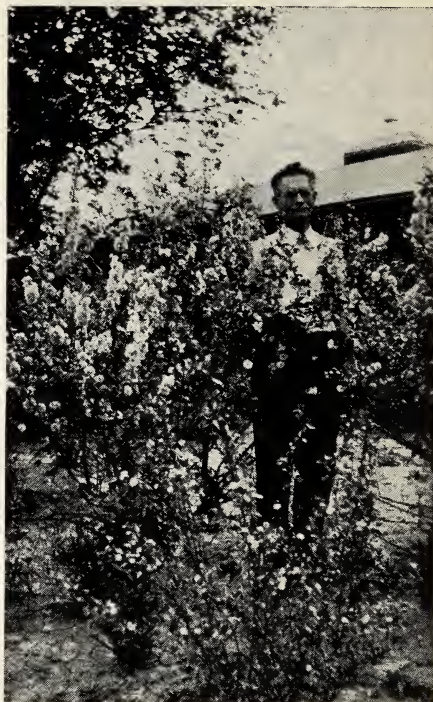
Sweet Wivelsfield

Beautiful flowers of the Sweet William family, only much larger and prettier than Sweet William. They come in many brilliant colors.

25c a packet.

Peony Seed

Each year we save large quantities of peony seeds for our own planting. Of late years we have had a constantly growing demand from our customers for this seed. Again this fall we will select seed for the best possible results. From seed so saved we have grown all the wonderful peonies that bear our name, including Longfellow, Mary Brand, Henry Avery, Martha Bulloch, Richard Carvel, Mrs. A. M. Brand, Victory Chateau Thierry, Myrtle Gentry, Mrs. Deane Funk, and others.



Prunus Triloba
Second Year After Planting

From the seed sent out by us this fall, there is the possibility of getting one good peony, as good as some of these, or even a better peony than any of these. You may originate a peony better than anyone else has produced. This makes an interesting experiment. To a flower lover, it is the most fascinating sport in the world.

This seed will be offered in six different very desirable combinations.

Packet of 50 seeds selected from all first class singles	\$1.00
Packet of 50 seeds selected from all first class Japanese	1.00
Packet of 50 seeds selected from all first class doubles, all colors.....	1.00
Packet of 50 seeds selected from all first class double brilliant red.....	1.00
Packet of 50 seeds selected from all first class double whites	1.00
Packet of 50 seeds selected from all first class double pinks	1.00
One packet of each of the above six, all six packages for	5.00
Very highest grade of all doubles and Japanese peony seed, mixed, per quart.....	10.00

"Prairie Afire"

Our new Japanese peony, Prairie Afire, is producing lots of seed this year. We will gather this seed and offer it to our customers this fall when it is ripe. Remember, this seed will not produce Prairie Afire blooms but there is a possibility that it will produce some very fine new Japanese peonies.

25 seeds for \$1.00.

Any of the foregoing offers is an opportunity to get some remarkable peony seed, and a wonderful chance to produce a world's best peony.

Exhibition Hyacinths

Hyacinths are among the most popular of spring-flowering bulbs, not alone for outdoor culture but equally so for indoor planting.

Indoor Culture: Use well pulverized soil; plant the bulbs so that the top appears just above the surface of the soil; water thoroughly, and put in a cool, dark, but ventilated place until the roots are well established; then bring to light. Do not start forcing too early—December and later is most successful.

Largest size bulbs, especially adapted to indoor forcing:

Each 20c; 3 for 50c; 12 for \$1.50.

GERTRUDE. Deep rose-pink.

GRAND MAITRE. Deep porcelain-blue.

KING OF THE BLUES. Dark blue.

LA VICTOIRE. Brilliant rosy-red.

L'INNOCENCE. Pure white.

YELLOW HAMMER. Golden yellow.

Some of Our Mail!

CANNOT FIND WORDS FOR EXPRESSION

Omaha, Neb.

I cannot find the words to express my opinion when I opened my package and saw those wonderful big healthy looking peony roots. They were so firm and solid that it seemed like I was holding a rod of iron instead of peony roots, and I must say that you were most generous and I want to thank you for filling my order as requested.—Mrs. L. B.

"BRAND'S PEONIES FOREVER"

Maywood, Ill.

If you treat everyone as you have my neighbors and myself I am sure you ought to receive enough praise to quite turn any mortal's head. Brand's forever, says I.—B. McE.

SUPERIOR STOCK BETTER THAN PROMISED

South Norwalk, Conn.

Your shipment of peony roots arrived in perfect condition and have all been put carefully each in its own little bed while I wait in impatient anticipation the passing of the months until such time as they shall appear again transformed into creatures of glowing, glorious beauty. You fulfilled your promise that you would send superior stock and more than fulfilled my most sanguine expectations. In my experience I have never seen such divisions, not even when I have paid high prices for two-year-olds.—A. N. P.
Fort Wayne, Ind.

The roots delivered on my order were considerably better than any I have received elsewhere.—H. S.

"BRAND DIVISIONS ARE MORE THAN YOU CLAIM"

Duluth, Minn.

Your shipment of my order for Iris and Peonies reached here Saturday and everything came through in fine shape. The Brand Divisions are all and more than you claim for them.—J. H. M.

RECOMMENDS BRAND PEONIES

Bryant, Iowa.

The peony roots arrived O. K. I was delighted with them and in all my life I have never seen such wonderful divisions. I have had divisions from well-known and reliable firms, but they could not compare by 50% with those which you sent. I shall try and recommend your firm to anyone who is looking for peonies. I only feel sorry that I did not know about you years ago.—J. F. D.

THANKS FOR THE EXCELLENT STOCK

Bartlesville, Okla.

My shipment was received very promptly and seemed in good condition. The Grootendorst rose plants are the finest I have received and I have bought from many houses. Thanks for the excellent stock.—J. K.

"EXCEED MY EXPECTATIONS"

Baltimore, Md.

The Peony plants I ordered from you arrived today. They are wonderful looking and really exceed my expectations. Your Manual is a wonderful and instructive work and I appreciate your kindness in sending this free of charge. I would not take \$10 for this book if I could not get another. I am sure that any further orders that I may have will come to you.—H. M.

IT PAYS TO BUY BRAND DIVISIONS

Enid, Okla.

Your catalog guarantees that you will not send out less than 3-eye peony divisions. Today my neighbor and I counted 17 (believe it or not) eyes on one root received this morning. To persons who have to count their nickels, if not their pennies, your prices seem rather high but we have waited longer to have our peony bed in order to buy from you. You see, we have had "Brand Divisions" before and we know something of the beauty that awaits us.—Mrs. W. H. C.

BUSINESS RULES

Read Before Ordering

HOW TO REMIT: Send your remittance—either a Post Office Money Order, Bank Draft, or Personal Check—to the BRAND PEONY FARMS and not otherwise. Address your letter to Brand Peony Farms, Box 408, Faribault, Minn.

DISCOUNTS: We have lowered our prices and we cannot offer large discounts or prepay charges. If we should promise to prepay charges, we should also wish to cut the expense. To do so we should have to send out smaller roots. We have decided to give all of our customers a DISCOUNT OF 5% on all orders amounting to \$5.00 or more. This discount will make up for postage or express charges and we will send you our same large divisions. The discount will also be fair to everyone.

SUBSTITUTIONS: We will not substitute without permission. However, if you send in an order late in the season, it will save delay if you name a second choice or give us permission to send a variety of equal or better value of the same color.

OUR GUARANTEE: We guarantee our stock to be true to name. Should a mistake occur and a customer receive a root that eventually proves not true to name, we will replace this root with one that is true and the customer may retain the root first received. We fill all orders personally and we take great pride in sending out satisfactory roots. After you receive our shipment, we want you to report at once anything that is not satisfactory and we will make proper adjustment. After your roots are planted, we cannot assume further responsibility for them.

Order Blank, for your convenience, on the back of this page.

To Hasten Your Peony Blooms To Prolong Your Peony Season

—Plant These—

Super-Early

3 VARIETIES

—Enjoy Them—

2 Weeks Earlier
2 Weeks Longer

Blooming very early, in continuous succession . . . these three varieties give you two whole weeks of peony beauty **AHEAD OF ALL THE OTHERS!**

LACINIATA—The Earliest Peony to Bloom

A single. Brilliant vermilion red. Great golden heart of stamens. Blooms with the early tulips. Absolutely hardy. Unaffected by hard late frost. The foliage is heavily cut like that of the Fern Leaf Sumac.

A BRAND DIVISION \$2.00

TENUIFOLIA FLORA PLENA—Next Earliest to Bloom

A double. Very brilliant crimson. Finely cut foliage, so much like that of the cosmos. Every season we receive numerous requests for the name of this flower. Tenuifolia should always be carefully mulched the first winter after planting. Plant as early in the fall as practicable. Very scarce. We have but a small stock to spare this fall.

A BRAND DIVISION \$3.00

OFFICINALIS RUBRA—Next Earliest to Bloom

That large brilliant red peony so often seen as a favorite in old gardens. In latitude of southern Minnesota it generally blooms by Decoration Day. It does not begin to pass out until just before the main crop of other peonies appear.

A BRAND DIVISION \$1.00

Fully two weeks preceding the early Chinese peonies—Laciniata blooms first, then Tenuifolia, then Officinalis Rubra. Each remains till the next appears. The last of the trio remains to be succeeded by Octavie Demay, Richard Carvel, Edulis Superba, and Festiva Maxima. They hasten the coming of peony time . . . they lengthen the peony season.

Super-Early Collection

IF PURCHASED SEPARATELY A TOTAL VALUE OF \$6.00

Collection Price . . . **\$5.00** . . . For All Three



A Most Sensational Lilac Offer

10 Beautiful Named French Lilacs

Among the new French Lilacs which we have been successful in propagating on their own root, there are ten choice varieties in which we have now multiplied our stocks sufficiently so that we can make an unusual offer. This offer comprises one each of these ten beautiful named French Lilacs in large 3-to-4-foot bushes—all grown on their own roots—all colors—all named and correctly labeled. A TOTAL VALUE OF \$13.00 as priced singly in the following list. All ten for only.....

\$7.50

Express Collect

Charles Tenth. Red. Single. One of the most dependable of the red singles. Very thrifty. Begins blooming very young and produces great quantities of large, nicely shaped panicles.

Own-Root, 3 to 4 Foot, \$1.00

Charles Joly. Double. Purple Red. One of the very best of the double dark reds. Bush medium both in size and height, limbs growing very upright. Rather large blooms, held erect well above the foliage; very striking. We consider this the best double red in our list.

Own-Root, 3 to 4 Foot, \$1.50

Charles Sargent. Double. Medium tall growing variety. Very shapely and vigorous plant. Color, a beautiful light lavender. Very double flower with florets; long narrow pointed petals.

Own-Root, 3 to 4 Foot, \$1.50

Maurice de Vilmoran. Double. Tall, upright-growing bush; very stout limbs; long, compact, cone-shaped panicles of a beautiful bluish lilac. Very choice.

Own-Root, 3 to 4 Foot, \$1.50

Marie Le Graye. Single. Pure creamy white. To us, this good single French Lilac is a special sensation. Panicles, very large and rather openly built. The individual petals and florets are very large. Blooms profusely, often as a two-year-old. Sells very readily at a good price as a cut flower.

Own-Root, 3 to 4 Foot, \$1.00

Mme. Lemoine. Double. One of the best of the double whites—a pure snow-white without tinge of cream. Foliage dark green. Panicles large, long, erect; large individual florets.

Own-Root, 3 to 4 Foot, \$1.00

President Carnot. Lavender. Double. One of the most profuse bloomers. Panicles very large, regular in form, rather oblong and compact. Florets very large in the bud. Back of floret deep reddish blue, center bluish violet. Very vigorous and dependable.

Own-Root, 3 to 4 Foot, \$1.50

President Grevy. Double. Light blue. Immense panicles; very double and symmetrical. A clear, soft, delicate blue—President Grevy is one of the older sorts and still one of the most desirable of all.

Own-Root, 3 to 4 Foot, \$1.50

Rubra de Marly. Single. This lilac in color is very much like the beautiful old lilac of our grandmother's garden. But there is a decided tinge of pink to it. Its panicle is larger, and it is a tremendous annual bloomer.

Own-Root, 3 to 4 Foot, \$1.00

William Robinson. Double. Invariably well liked; always chosen as one of the best. Very compact panicles, almost round. When florets are about to open, the bloom gives a very striking pinkish red effect which gives place to a lavender as the florets fully open and their reverse side turns back. Very much admired.

Own-Root, 3 to 4 Foot, \$1.50

This collection cannot be sent by post, as our strong shrubs are too large to be shipped by mail.