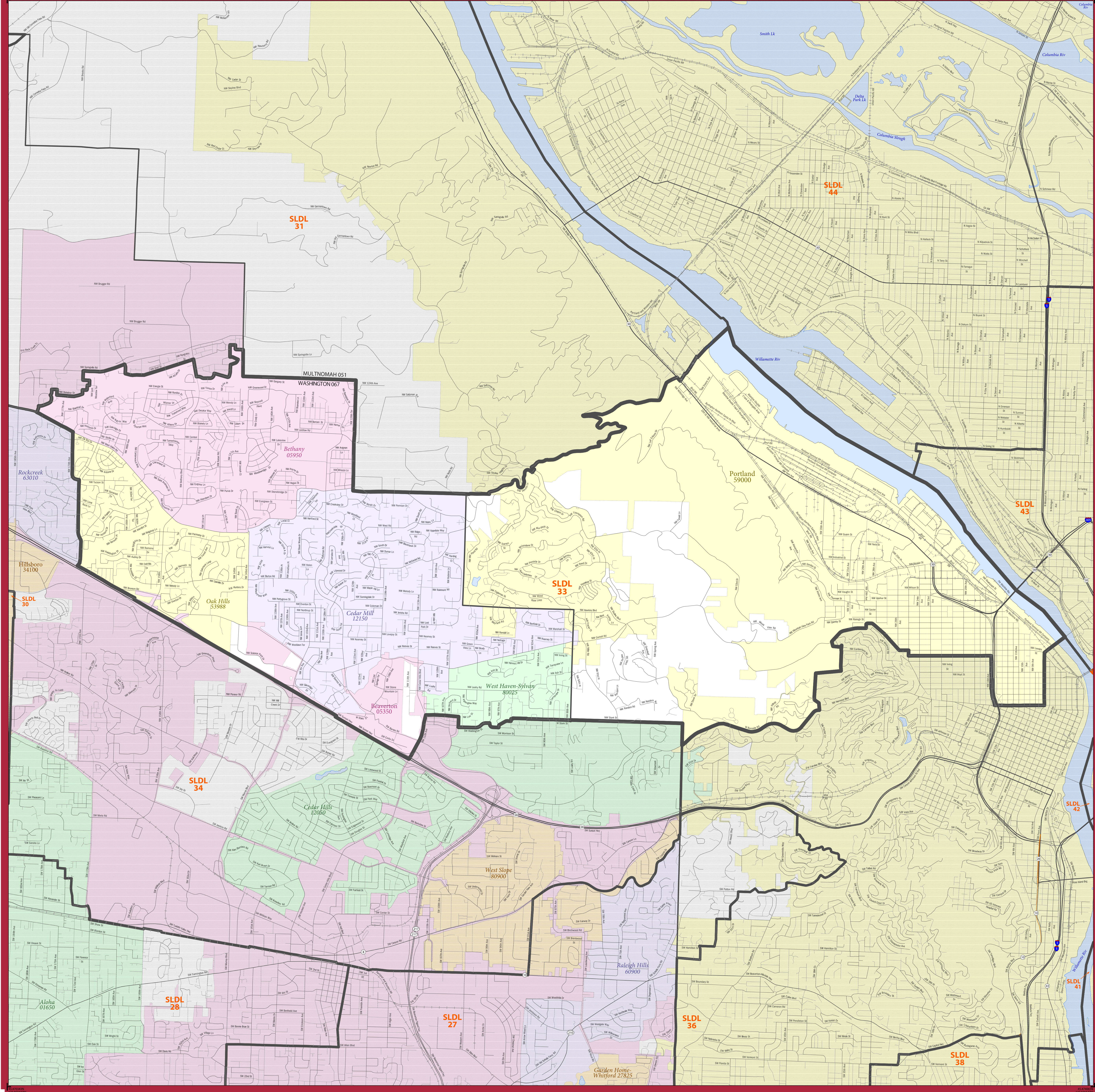


STATE LEGISLATIVE DISTRICT REFERENCE MAP: State House District 33 (Oregon)



LEGEND

| SYMBOL DESCRIPTION | SYMBOL | SYMBOL | SYMBOL | SYMBOL | SYMBOL |
|---|-----------|-----------------------|--------|--------|--------|
| International | — · — · — | CANADA | | | |
| Federal American Indian Reservation | ■ ■ ■ ■ ■ | L'ANSE RES 1880 | | | |
| Off-Reservation Trust Land | ■ ■ ■ ■ ■ | T1880 | | | |
| State American Indian Reservation | ■ ■ ■ ■ ■ | Tama Res 9400 | | | |
| State Legislative District - Lower (House) | — — — — — | SLDL 94 | | | |
| State (or statistically equivalent entity) | — · — · — | NEW YORK 36 | | | |
| County (or statistically equivalent entity) | — — — — — | ERIE 029 | | | |
| Minor Civil Division (MCD) | — · — · — | Bristol town 07485 | | | |
| Consolidated City | ● ● ● ● ● | MILFORD 47500 | | | |
| Incorporated Place ² | ■ ■ ■ ■ ■ | Davis 18100 | | | |
| Census Designated Place (CDP) ² | ■ ■ ■ ■ ■ | Incline Village 35100 | | | |

| DESCRIPTION | SYMBOL | DESCRIPTION | SYMBOL |
|---------------|--------|----------------------|-----------|
| Interstate | — 1 — | Water Body | ■ ■ ■ ■ ■ |
| U.S. Highway | — 2 — | Pleasant Lake | ■ ■ ■ ■ ■ |
| State Highway | — 3 — | Outside Subject Area | ■ ■ ■ ■ ■ |
| Other Road | — 4 — | | |
| Railroad | — 5 — | | |

Where international, state, county, and/or MCD boundaries coincide, the map shows the boundary symbol for only the highest-ranking of these boundaries.

1. MCD boundaries are shown in the following states in which some or all MCDs function as general-purpose governmental units: Connecticut, Illinois, Indiana, Kansas, Maine, Massachusetts, Michigan, Minnesota, Missouri, Nebraska, New Hampshire, New Jersey, New York, North Dakota, Ohio, Pennsylvania, Rhode Island, South Dakota, Vermont, and Wisconsin. (Note that Illinois and Nebraska have some counties covered by nongovernmental precincts and Missouri has most counties covered by nongovernmental townships.)

2. Place label color corresponds to the place fill color.
Label colors: Davis Davis Davis Davis Davis

State legislative districts are delineated based on the results from the 2010 Decennial Census, all other legal boundaries and names are as of January 1, 2010. The boundaries shown on this map are for Census Bureau statistical data collection and tabulation purposes only; their depiction and designation for statistical purposes does not constitute a determination of jurisdictional authority or rights of ownership or entitlement.

Geographic Vintage: 2010 Census (reference date: January 1, 2010)
Data Source: U.S. Census Bureau's MA/TIGER database (BAS13)
Map Created by: Geography Division: May 19, 2013

Projection: Albers Equal Area Conic
Datum: NAD 83
Spheroid: GRS 80
1st Standard Parallel: 42 43 45
2nd Standard Parallel: 45 34 55
Central Meridian: -120 34 56
Latitude of Projection's Origin: 41 59 44
False Easting: 0
False Northing: 0

The plotted map scale is 1:2148

Scale bar: 0 0.6 1.2 1.8 2.4 3.0 Kilometers

Scale bar: 0 0.4 0.8 1.2 1.6 Miles

United States Census Bureau

PARENT SHEET 1
Total Sheets: 1
Index Sheets: 0
Parent Sheets: 1

NAME: State House District 33
ENTITY TYPE: State Legislative District - Lower (House)
ENTITY CODE: 033
ST: Oregon (41)
COU: Multnomah (051), Washington (067)

SLDL REF MAP (PART) 2504030001