

Historic, archived document

Do not assume content reflects current scientific knowledge, policies, or practices.

62,43

LIBRARY

RECEIVED

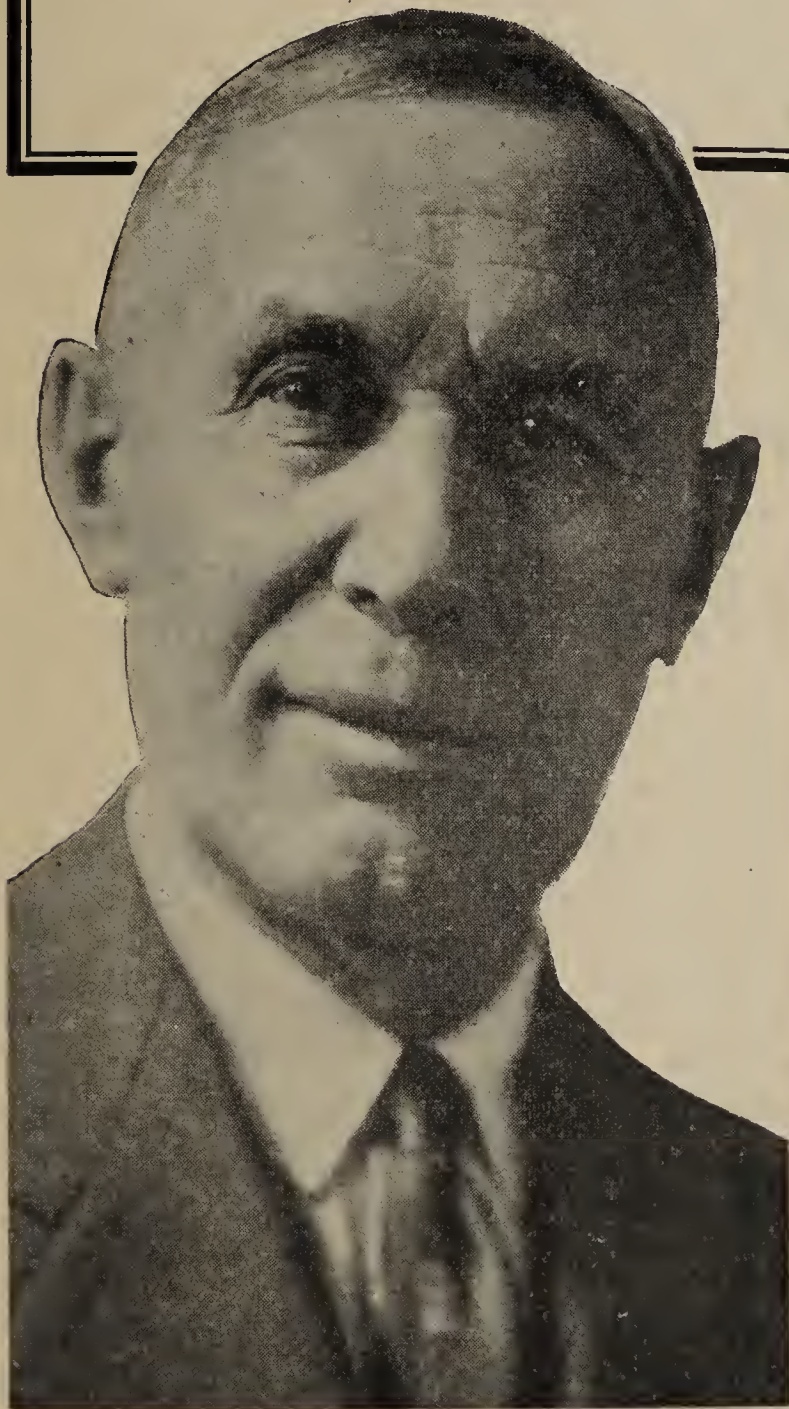
★ JAN 25 1933 ★

U. S. Department of Agriculture

Here is Your

“GOOD TIMES”

CATALOG



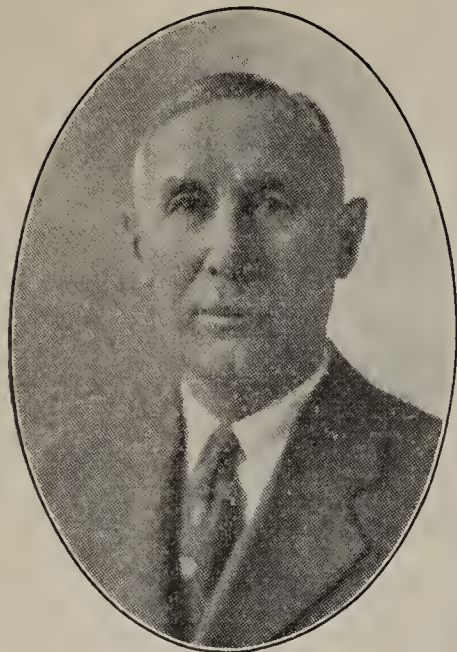
*“More For
Your Money”*

Charles A. Pfeiffer

I have planned this new Catalog of ours to create “good times” for as many of our friends and customers as possible. This is the first big catalog you have ever received from us that was just printed in black and white without showing any of the flowers in their natural colors. We cut out the color this year because it costs money and instead of giving our money to the printers, we are going to do the opposite and are cutting all the prices down to the very rock bottom. This means the greatest bargains in history for everyone. Please remember this as you look through the following pages.

The Pfeiffer Nursery

Winona, Minnesota



C. A. PFEIFFER

*The Very Finest
Prize-Winning
Varieties*
Now Offered Here at
BARGAIN PRICES

I REALIZE that very few people this year are in a position where they can spend money without being pretty careful to spend it wisely. We have planned this catalog to give you more for your money than ever before.

"When you go to the trouble of planting flowers you might just as well put in something that is going to surprise and delight not only yourself but also all your friends and neighbors." My old customers keep repeating that idea over and over in their letters and also when

they come out here on our place and meet us face to face.

There certainly is a tremendous difference between just the ordinary "garden varieties" of plants and real pedigreed prize-winners. I don't have to tell this to the people who have been growing flowers for years, but sometimes the younger people don't seem to understand it.

The reason I mention this is because every single, last plant we have on our place is the prize-winning type. It not only gives far bigger blooms with much brighter colorings,

Peony Specials

Collection No. 1

This is a Collection of four beautiful Peonies. Not the highest priced or the highest rated, but four fine Peonies you will be proud to start with. It consists of a dark pink, light pink, white and dark red. Last year these four Peonies sold for \$3.00, this year you can have them in this Collection for only \$1.00.

- Edulis Superba—Dark pink
- Susan B. Anthony—White
- Rachel—Dark red
- La Perle—Light pink

ALL 4 For ONLY \$1.00 Postpaid

Collection No. 2

This Collection consists of six extra fine, high rated Peonies. The only reason we are able to list them in a Bargain Collection like this is because our stock of these varieties is unusually large. Because of this we are able to pass along to you this extremely high class Bargain for one-third of their last years list price.

- Albert Crousse—Seashell pink
- Baroness Schroeder—Flesh white
- Chestine Gowdy—Silvery pink
- Karl Rosefield—Dark red
- Mons. Jules Elie—Lilac pink
- Chas. McKellip—Crimson

ALL 6 For ONLY \$2.00 Postpaid

INDEX

to Pfeiffer's "Goodtimes"
Catalog

	Pages
Introduction.....	1 to 4
How and When to Plant Peonies.....	5
Peonies, Alphabetical List.....	6 to 11
Peony Bargains.....	12
Iris Introduction.....	13
Iris Listings.....	13 to 20
Iris Bargains.....	21
Hardy Perennials.....	22 and 23
Hardy Phlox.....	24
Rock Garden Plants.....	25
Tulips.....	26 and 27
Other Dutch Bulbs.....	27
Tulip Bargains.....	28
Hardy Lilies.....	28
Order Blank.....	29
Free Plant Offer.....	30
Narcissus.....	31
Gladiolus reminder.....	31
Bulb planting guide.....	31
6-\$1.00 Bargains for \$5.00.....	32

See Page 30 for FREE BULB OFFER

"More for Your Money"

but also the foliage is uniformly heavier and more brilliant and stately. These well-nourished, full-bodied bulbs are less subject to attacks by insects and fungus growths and are generally more hardy. This is due first of all to the careful selection of varieties and then to the care that we give to the maturing bulb so that it will reach you in the most perfect growing condition.

ACRES AND ACRES OF BARGAINS

Further on in this catalog you will find page after page of bargains, some of them seeming almost incredible to the experienced flower-gardener. In more than one case the price has been cut to one-fourth of what it was a couple of seasons ago. Nearly everything is at least cut in half compared to former prices on these quality strains of genuine prize-winners.

ORDER NOW IF POSSIBLE

As mentioned before, we have done everything we know how to cut expenses so that the very lowest of low prices could be quoted to you here. Even the dozens of diggers, planters and other men we employ have taken a voluntary cut in wages this year in order to help out our plan to offer you the lowest prices in history—and we in turn have not laid off

any one while there was work to do around the place. This catalog is being printed in black and white instead of in colors and the saving passed on to you. We are not doing any big, expensive "publicity" advertising and this saving we also pass on to our customers and our customers' friends. Therefore, such remarkably low prices as you will find on the following pages probably never will be repeated again in our day. Remember, too, that the flowers planted now will mature to reign over your garden and flower beds for many years to come. They will be a delight during the coming season and for many more seasons to follow. You thus not only save money by planting now but you also will have the flowers to enjoy this next, coming season.



L. E. PFEIFFER

See Page 29 for Special Order Blank

Pfeiffer's Tulip Bargains

MIXED DARWIN

This Collection consists of over 15 varieties of the finest Darwin Tulips grown. The colors include dark red, bright pink, yellow, black, rose, light pink, bright red, violet and many others. Truly a wonderful collection.

40 Bulbs - \$1.00
85 Bulbs - 2.00
135 Bulbs - 3.00

ALL POSTPAID

MIXED BREEDER

These giant flowering varieties are becoming more popular every year. They bloom at the same time as the Darwins, and this Collection consists of such colors as copper bronze, violet and rose bronze, velvety purple, mahogany, dark purple, maroon, purple flushed gold, and many others. A balanced Collection at prices never before equalled.

24 Bulbs - \$1.00
50 Bulbs - 2.00
110 Bulbs - 4.00

ALL POSTPAID

BUY NOW!

Save Money . . Get the Healthiest
Stock . . Brightest Blooms . .
All Positively Guaranteed

Prices shown in this catalog are by far the lowest we have ever quoted. There are bargains by the dozens on every page. Such an opportunity cannot come again. Conditions are changing rapidly. Prices next spring are bound to be higher. Get your order on the way just as soon as you can.

WHAT Others Say

OMAHA, NEBRASKA

Last fall I purchased your Peony Collections A and B, totaling eleven roots.

Am pleased to state that all have thrived and bloomed beautifully, some having as many as six or seven large blossoms. The Mme. Emile Galle and Luetta Pfeiffer were particularly fine.

Be sure that I am on your mailing list when your new catalog is ready for distribution. —L. D.

MADISON, WISCONSIN

A few days ago I received your catalog No. 31, and I note the heading, "My Book on How to Grow Prize Winning Flowers", and how true the remark of "Prize Winning Flowers" is.

In the fall of 1929 I purchased two Therese from you, and in our June Peony show held in Madison this year a bloom from one of these plants was judged the best Peony in the show.

You can imagine the thrill we had from this award, considering this was its second year for the plant. —E. M. L.

MINNEAPOLIS, MINNESOTA

All my Irises which I received from you last year are in fine condition. I purchased a two dollar collection and was richly rewarded with a number of fine blooms. Please send me a catalog as soon as possible as I want to add many new plants to this collection. —Miss L. B.

RICHMOND, INDIANA

Last fall I ordered one of your Surprise Collections of Iris, and among them was a lovely white with blue edging. It was so lovely that it was stolen, and I wish to replace it. Do you know what the variety was? The Surprise Collection was perfectly wonderful, I did not know there were so many lovely Iris. —M. F. L.

CLARENDON, VIRGINIA

I just want to let you know how well the Tulips turned out that were ordered from you last fall, and I am proud to report that I have the best looking Tulips in the neighborhood. —Mrs. C. W. H.

WE HAVE always done all we know how to deserve your confidence and good will. We guarantee absolutely that everything we say further on about each and every flower we offer you is true in every way. We also insure you against any possible mistakes that might be made, in packing your selections and guarantee that plants and bulbs are true to name. Then we go a step farther and guarantee that when the bulbs reach you they will be in good, healthy growing condition. You can help us here by having your Express Agent or Postmaster make a note on your receipt if anything has happened to the package in transit. Return anything not received in good condition to us at once, and we will gladly replace it or refund your money. Remember, we are actually the growers of every Peony, Iris and other perennial that we offer you. We grow them, dig them, pack them fresh from our loam soil right here under the ideal growing conditions found only in this section of the upper Mississippi Valley. Your order, big or little, anything from one bulb to a carload will be appreciated and we will give it the very best attention.

C. O. D. SHIPMENTS. C. O. D. orders must be accompanied by 25% of the total amount in cash, money-order, or check. You then pay the balance C. O. D. on delivery plus collection charges. We prepay carrying charges on orders over \$1.00 when remittance in full accompanies order. This is better than C. O. D. because there is no collection charge and you save money. Make remittances payable to The Pfeiffer Nursery.

NOTE: We refer our new friends for business references to Duns or Bradstreet's or the First National Bank of Winona.

“More for Your Money”

PEONIES HOW AND WHEN TO PLANT

All Peonies are not alike any more than all members of the “white race” are the same. It is this individuality that first appealed to C. A. Pfeiffer as a home gardener and it is what we have devoted a great deal of time to developing in our Peonies grown here at Winona. In the varieties offered on the following pages you will find the Peonies that appeal to you most, the ones you will be proud to show to friends.

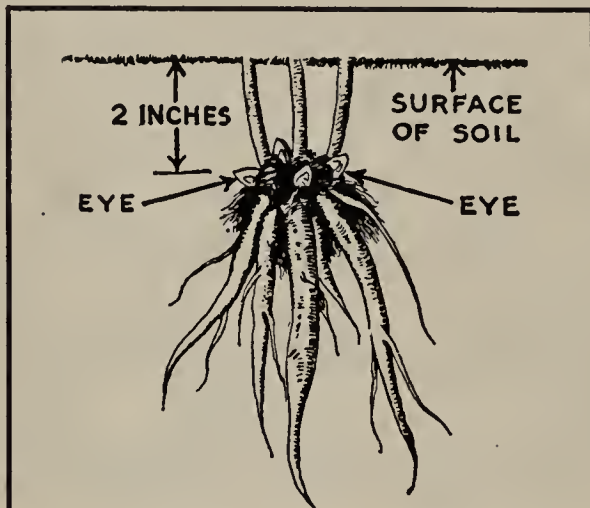
A PEONY GARDEN WITH A WEALTH OF BLOOM. For those of you who love flowers but have never yet grown Peonies, there is a world of pleasure awaiting you. If you do not now have a flower garden, but aspire to have one some day, a few Peonies planted this fall will make a splendid beginning. Not until you grow these gorgeous flowers yourself can you know of the keen delight of watching the development of the seemingly insignificant bud into a marvelously beautiful bloom, and of the enjoyable thrill of cutting these exquisite flowers for the house or for your friends.

PEONY RATINGS. The figures at the left in the Peony descriptions are the official ratings given by the American Peony Society; 10 points being perfect. Any Peony rating 7.0 is good, over 8.0 very good, and over 9.0 exceptionally good.

HARDY AND LONG LIVED. Peonies are easy to grow, perfectly hardy and when established in the garden, become a permanent fixture in the landscape. They bear large and showy flowers of a great range of colors. Some are delicately scented, proving themselves to be ideal for cut flowers.

VARIETY OF USES. The Peony is fine as a specimen plant, for massing, for borders, for cover in front of shrubbery, and is one of the very best low hedging plants. It gives color and variety to every form of landscape decoration. It is hardy in almost any climate and any soil, is easily established and requires a minimum of care. It is almost, but not quite, immune from plant diseases and insect pests.

PLANTING AND CULTIVATING PEONIES. Peonies require a reasonably fertile, well drained soil and should have full sun at least part of the day. If planted in a shady place, plants are apt to be spindly, and will not produce typical bloom. If possible, plant them in an open space away from trees and shrubbery,



How to Plant Peony Roots

Make hole deep and wide enough to accommodate the roots. Plant so that the “eyes” are NOT more than two inches below the surface. TOO DEEP PLANTING IS OFTEN THE REASON WHY PEONIES DO NOT BLOOM.

in the open sunlight. Plant so that the buds or eyes are about two inches below the surface of the ground. Deep planting is detrimental to their blooming habit, and sometimes the cause of their not blooming at all. Space the plants about three feet apart. For hedge plant 24 inches apart.

FERTILIZING. A little bone meal or prepared fertilizer scattered around the plant, but not in contact with the stems, worked into the soil is beneficial for better blooms. Never let fertilizer of any kind come in contact with the roots.

SIZE OF ROOTS. After many years growing Peonies, we have found by experience that a plant with 3 to 5 strong, well developed buds or eyes, and a properly balanced root system will produce the best results in the shortest time.

TIME OF PLANTING. Peonies planted in September and October become established before winter sets in, and will usually bloom in the spring. We advocate fall planting for the amateur grower; but they can be successfully planted in the spring providing the plants are dug in the fall and kept in a dormant condition over winter.

Place the plants in your garden where they can remain permanently for eight or ten years. Cover lightly with straw or coarse hay after the ground freezes, the first fall.

ABOUT ANTS AND BEES. When the buds begin to swell in the spring, they are frequently covered with ants and bees; but do not become alarmed, as all these insects are after the honey that exudes from the buds, and they will not cause any injury.

FINAL—BUT IMPORTANT. While many Peonies will bloom the first year, most varieties will not reach their full normal development, or produce typical bloom, until their third year. In cutting bloom, be sure to leave part of the foliage on the plant for the future development of the roots and buds.



Just a Few of the Many Medals and Cups awarded to Pfeiffer Nursery Flowers.

PFEIFFER'S PEONIES

In Alphabetical Order



Small section from a three year Peony field

- 8.5 **ADOLPHE ROUSEAU** (Dessert, 1890) Garnet-red. One of the darkest and most brilliant velvety reds, with large, shell-like petals on tall, stiff stems. Early midseason; an extra fine landscape variety. **75c each.**
- 8.7 **ALBATRE** (Crousse, 1885). White. Very large. Fragrant, strong grower and profuse bloomer. Late midseason. **50c each.**
- 8.6 **ALBERT CROUSSE** (Crousse, 1893) Very large, compact, bomb type flower. Delicate seashell-pink with crimson flecks. An excellent standard variety. **50c each.**
- 7.6 **ALBA SULPHUREA** (Calot, 1860). White. Large, bomb-shaped, white flower, center sulphur-yellow. Midseason. Fine for cut flowers. **40c each.**
- 8.8 **ALSACE-LORRAINE** (Lemoine, 1860). Creamy white. Very large, creamy white flowers, center delicately tinted with brownish yellow. Painted petals resembling a water lily. Tall. Vigorous grower. Late. **\$1.00 each.**
- 7.3 **ALEXANDRE DUMAS** (Guerin, 1862). Rose and salmon. Brilliant pink crown-shaped flowers. Early and a very profuse bloomer. **40c each.**
- 7.5 **ARCHIE BRAND** (Brand, 1913). Deep seashell-pink. Very large, bomb-shaped flower of an even seashell-pink with silvery border; delicately scented like a rose. Profuse bloomer. Medium early **75c each.**
- 8.1 **ASA GRAY** (Crousse, 1886). Lilac-pink. Large, compact, pale lilac flower of semi-rose type. Prolific bloomer, fragrant and very striking appearance. Medium early. **75c each.**
- 8.7 **AUGUSTE DESSERT** (Dessert, 1920). Intense pink, each petal edged with narrow silver border. Midseason. **\$2.75 each.**
- 7.8 **AUGUSTINE D'HOUE** (Calot, 1867). Red. Extremely large, showy bloom of very deep brilliant or solferino-red, silvery reflex, bomb type. Medium early. **50c each.**
- 8.0 **AUORE** (Dessert, 1904). Milky white. Extra large, flat, loose bloom, semi-rose type. Fragrant and fine. Late. **75c each.**
- 8.7 **AVALANCHE** (Crousse, 1886). Pure snow-white. Fragrant, waxy, snow-white blooms opening like a rosebud. Center petals edged with carmine. Strong, tall, midseason variety. Very free bloomer. **50c each.**
- 8.5 **BAYADERE** (Lemoine, 1910) Pure white. Large, globular flowers of creamy white with a golden heart. Midseason. **\$2.00 each.**
- 9.0 **BARONESS SCHROEDER** (Kelway, 1889). Flesh-white. Plume-shaped flower with irregularly shaped petals. Fragrant; strong, tall grower and free bloomer. Midseason. Regarded as one of the world's best white Peonies. **75c each.**
- 8.1 **BEN FRANKLIN** (Brand, 1907). Crimson-red. Very tall, erect stems carrying individual crimson-red, rose type blossoms in great profusion. Medium early; fine for massing for cut flowers and as a landscape variety. **50c ea.**
- 7.8 **CHARLES McKELLIP** (Brand, 1907). Crimson. Probably the most perfectly formed bright red Peony, especially beautiful in the bud and when half open. Semi-rose type. Midseason. **75c ea.**
- CHARLES VERDIER**. Deep rose. Sort of a mystery Peony, origin unknown, so it has never been listed for rating. Resembles a large rosebud. One of the most prolific late varieties. A free and reliable bloomer. **50c each.**
- 8.6 **CHERRY HILL** (ThurLOW, 1915). Deep garnet-red. One of the earliest red Peonies. Beautiful sheen, long stiff stems. Semi-rose type. **\$1.00 each.**
- 8.4 **CHESTINE GOWDY** (Brand, 1913). Silvery pink. Delicate pink cone-shaped flower with creamy white petals surrounding the prominent ball of pink center petals. A late midseason variety, fragrant and fine for cutting. **50c each.**
- 8.7 **CLAIRE DUBOIS** (Crousse, 1886). Satiny pink. Very large, rose type flower, uniform soft pink color, borne erect on strong, stiff stems. One of the very best late varieties. **75c each.**
- 8.1 **COURONNE D'OR** (Calot, 1873). White. Large, flat, semi-rose type, pure white flowers with a ring of yellow stamens around a tuft of center carmine tipped petals. Late. **50c each.**
- 7.1 **DELACHEI** (Delache, 1856). Red. Large, compact, rose type, violet-crimson blossoms slightly tipped with silver. One of the best old standard varieties. Late midseason. **50c each.**
- 7.5 **DELICATISSIMA** (Unknown). Delicate pink. Rose type flower; fragrant, free bloomer, early and especially good for commercial cut flowers. **50c each.**
- 8.1 **DUCHESS DE NEMOURS** (Calot, 1856). Sulphur-white. Another of the best of the older varieties. Crown type, sulphur-white blossoms, free bloomer and a vigorous grower. Early. **50c each.**
- 7.8 **DUC DE WELLINGTON** (Calot, 1859). Creamy white. Large, bomb-shaped, white blossoms, sulphur center. Tall, erect growth. Midseason. **50c each.**
- 7.6 **EDULIS SUPERBA** (Lemoine, 1824). Bright rose-pink. Very fragrant. Early. Usually called the Decoration Day Peony. Excellent cut flower variety. **40c each.**
- 9.2 **E. B. BROWNING** (Brand, 1907). White. A tall, commanding white rose type, soft pink in the bud. A very attractive flower. Very large and late bloomer. **\$2.00 each.**
- 8.7 **ELWOOD PLEAS** (Pleas, 1900). Light shell-pink. Large size, flat, full double, light pink blooms in clusters, opening several on a stalk. Robust grower. Late midseason. **\$1.00 each.**
- 8.9 **ENCHANTRESS** (Lemoine, 1903). Late white. **\$1.50 each.**
- 8.0 **ETTA** (Terry). Pale pink. Very large, rose type, fragrant, even pink blooms. Very late. **75c each.**
- 8.6 **EUGENIE VERDIER** (Calot, 1864). Pale hydrangea-pink. Collar lighter, center deeper, flecked crimson. Large, medium, compact rose type, tall, free bloomer. Midseason. Distinct from Eugene Verdier **50c each.**

"More for Your Money"

- 8.3 **EUGENE VERDIER** (Calot, 1864). Hydrangea-pink. Very large, compact, typical rose type. Outer guard petals lilac-white. Fragrant; very erect, dwarf habit, with strong stems; free bloomer. Late. This variety should not be confused with Eugenie Verdier or L'Indispensable. We have the genuine Eugene Verdier. **75c each.**
- 7.7 **FANNY CROSBY** (Brand, 1907). Soft pink guard petals, canary yellow center. Midseason. **75c each.**
- 7.8 **FARIBAULT** (Brand, 1918). Deep rose with silver sheen, much like a rose. Free bloomer. Late. **75c each.**
- 8.4 **FELIX CROUSSE** (Crousse, 1881). Rich red. Large, globular flowers are a rich, brilliant, effective red. Rose type. Late midseason. **50c each.**
- 9.3 **FESTIVA MAXIMA** (Miellez, 1851). White. Extra large rose type. Pure white with carmine flecking in the center. Fragrant; early; most popular all white Peony. **50c each.**
- 9.1 **FRANCES WILLARD** (Brand, 1907). Creamy white. Large flower with cup-shaped center, enclosing golden stamens. Very fragrant. Midseason. **\$1.00 each.**
- 7.5 **FLORAL TREASURE** (Rosenfield, 1900). Lilac-rose. Very large rose type; free bloomer. Midseason. **50c each.**
- 8.2 **FRANCOIS ROUSSEAU** (Dessert, 1909). Brilliant red. Rose-shaped, showing stamens among the petals. Early. **\$1.50 each.**
- 8.9 **GEORGIANA SHAYLOR** (Shaylor). Pale rose-pink with lighter center. The flowers are large with extremely broad petals; midseason. One of Shaylor's best. **\$2.00 each.**
- 8.6 **GOLDEN DAWN** (Gumm, 1923). Ivory-white with yellowish center. Very fragrant. Much like Primevere. **\$4.00 each.**
- 8.2 **GROVER CLEVELAND** (Terry, 1904). Dark crimson. Very large, compact rose type; medium height. Late midseason. **75c each.**
- 8.8 **GRANDIFLORA** (Richardson, 1883). Shell-pink. Very large, flat rose type, with fine, lacy petalage. Very late. **50c each.**
- 7.3 **GOLDEN HARVEST** (Rosenfield, 1900). Lilac-rose. Guard petals enclosing creamy white petals surrounded by pink-carmine tipped petals. Early. **75c each.**
- 9.1 **HANSINA BRAND** (Brand, 1925). Medium to deep pink, long erect stem. A remarkable and distinct Peony. Given an award of merit at the London, Ont., International Show. **\$10.00 each.**
- 7.9 **HARRIET FARNSLEY** (Brand, 1916). Flesh-pink. Rose type. Very late. **50c each.**
- 9.0 **HAZEL KINNEY** (A. M. Brand, 1925). Light flesh-pink; large. Midseason. **\$15.00 each.**
- 7.7 **H. F. REDDICK** (Brand, 1913). Dark crimson with gold stamens; beautiful. Profuse bloomer. Midseason. **50c each.**
- 8.8 **HENRY AVERY** (Brand, 1907). Light pink. Large crown type; flesh-pink with clear yellow petals forming a collar around a rose-pink center. Good bloomer; erect. Midseason. **\$2.00 each.**
- 7.9 **JEANNE D'ARC** (Calot, 1858). Pink and white. Soft pink guards, creamy white collar, central crown tipped carmine. Fragrant; free bloomer. **50c each.**
- 9.2 **JEANNOT** (Dessert, 1918). Flesh-pink. Globular rose type, pink with lavender tint. Late. A fine landscape plant. **\$3.00 each.**
- 8.9 **JUBILEE** (Pleas, 1908). White. Very large, flat rose type, white shading to rose; distinctive and strong. **\$1.00 each.**
- 8.6 **JUDGE BERRY** (Brand, 1901). Soft pink. Very large, flat, semi-rose type. Bud opens pink, the petals open farther and farther back until it becomes a great flat disk of variegated pink and white blooms of surpassing beauty, seven to eight inches in diameter. Very early, with a delicate fragrance. **\$1.50 each.**
- 9.0 **JUNE DAY** (Franklin). Light pink, deepening toward center of flower. Rose type. Some of the central petals edged with lavender. Delicate rose fragrance. Midseason. **\$3.00 each.**
- 8.8 **KARL ROSENFELD** (Rosenfield, 1908). Rich crimson. Large, semi-rose type. Tall, strong plant. Midseason. **75c each.**
- 9.8 **KELWAY'S GLORIOUS** (Kelway, 1909). White. Very large, full double rose type; free bloomer. A really fine white Peony. **\$4.00 each.**
- 8.3 **LA ROSIERE** (Crousse, 1888). White. Large, fragrant, semi-double white blooms with golden yellow stamens. Midseason. **50c each.**
- 9.0 **LA FRANCE** (Lemoine, 1901). Rose-white. Very large, compact rose type, guard petals splashed crimson. Very fragrant; strong, tall, free bloomer. Late. **\$1.50 each.**
- 9.2 **LA FEE** (Lemoine, 1906). Mauve-rose. Very large, compact crown type flowers. Very fragrant; tall and vigorous. Early midseason. **\$2.50 each.**
- 9.1 **LADY ALEXANDRA DUFF** (Kelway, 1902). Flesh-pink. Very large, flat, semi-rose flowers, distinctly striped with carmine. Strong and vigorous; profuse bloomer. Midseason. **\$1.00 each.**
- 8.6 **LA LORRAINE** (Lemoine, 1901). Creamy white. Large, globular blooms. Tall grower, free bloomer. Midseason. **\$3.00 each.**
- 7.5 **LA TULIPE** (Calot, 1872). Blush white. Very large, flat, semi-rose type; outer guard petals splashed crimson. Free bloomer. Midseason. **50c each.**
- 8.5 **LA PERLE** (Crousse, 1885). Pink. Very large, compact, globular flowers, flecked carmine. Fragrant. Strong grower. Midseason. **50c each.**
- 7.3 **LA SUBLIME** (Parmentier, 1850). Crimson. A fine, tall crimson. **75c each.**
- 8.8 **LAURA DESSERT** (Dessert, 1913). Creamy white. Large, full flower, cream-white guards, bright canary-yellow center. An early and superb variety. **\$3.50 each.**
- 8.4 **LORA DEXHEIMER** (Brand, 1913). Flaming crimson. Immense semi-rose blooms, stiff stems; prolific. Early. **\$1.00 each.**
- 9.9 **LE CYGNE** (Lemoine, 1907). Milk-white. Large, semi-rose type, perfectly formed, globular flowers. Petals very much incurved, very fragrant, erect, medium tall, stiff stems. Free bloomer. Midseason. The finest white in existence. **\$3.00 each.**
- 7.3 **L'INDISPENSABLE** (Origin unknown). Pink. Rose type. Late midseason. Must not be confused with Eugene Verdier. **50c each.**
- 8.8 **LILIAN GUMM** (Gumm, 1921). Deep rose-pink; very fine fragrance. One of the very largest Peonies. Late midseason. **\$3.00 each.**



Looking across Peony field toward L. E. Pfeiffer home

Charles A. Pfeiffer's "GOODTIMES" Catalog



Le Cygne, highest rated Peony in the world.

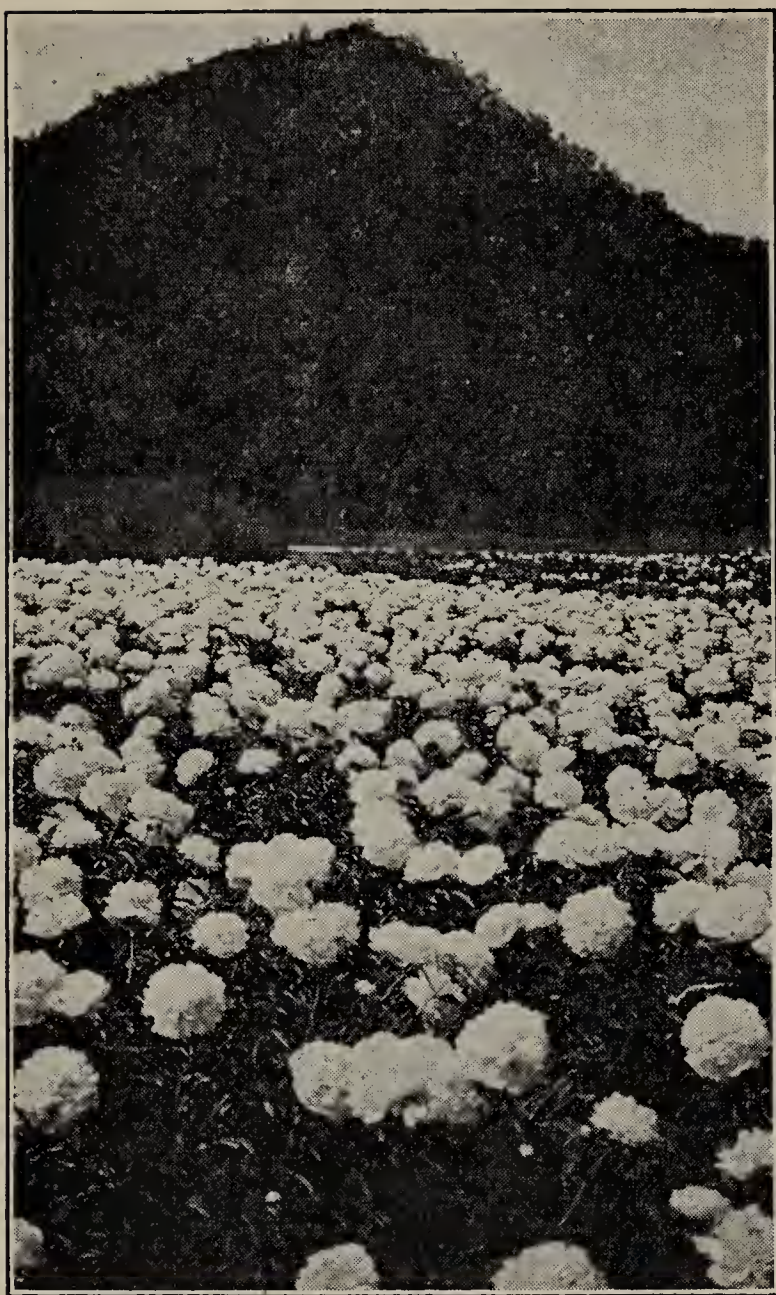
- 8.1 **LIVINGSTONE** (Crousse, 1879). Pale lilac-rose. Large full blooms, silver tipped; upright, erect grower. Late. Extra good variety. **\$1.00 each.**
- 9.0 **LONGFELLOW** (Brand, 1907). Brilliant cherry, golden stamens surround the center. Good bloomer. Late midseason. One of the finest reds in existence. **\$1.50 each.**
- 6.9 **LOUIS VAN HOUTTE** (Calot, 1867). Carmine-rose. Semi-rose type, silver tipped with fiery reflex. Fragrant. Midseason. **50c each.**
- 8.8 **LOVELINESS** (Hollis, 1907). Pink. Very large, flat hydrangea-pink flowers. Strong, upright stem. Late bloomer. **\$1.00 each.**
- 8.7 **LUETTA PFEIFFER** (Brand, 1916). A beautiful semi-double, pinkish white, often eight to ten inches in diameter. These immense flowers are borne on long, stiff, upright stems. The blooms are made up of large, pure glistening petals interspersed with golden stamens. Petals are edged and blotched with stripes of brilliant carmine. It is a very early, profuse and dependable bloomer. Fragrant. It opens a light pink and gradually fades to the daintiest pink, and then almost white. The foliage of the plant is a shiny dark green. **\$2.00 each.**
- 9.0 **MABEL FRANKLIN** (Franklin, 1920). Blended pink. Collar of creamy petals surrounds the center, outer pink petals tinged with lavender. Fragrant. **\$5.00 each.**
- 8.3 **MARIE JAQUIN** (Verdier). Pale pink, midseason. **\$1.00 each.**
- 8.1 **MME. CALOT** (Meillez, 1856). Hydrangea-pink. Large, globular rose type. Early, profuse bloomer. Very fragrant. **50c each.**
- 7.9 **MME. CROUSSE** (Calot, 1866). White. Large, crown type, center petals crimson flecked. Free bloomer. Midseason. **50c each.**
- 7.9 **MME. DE VERNEVILLE** (Crousse, 1885). Pure white. Center tipped carmine. Very large, full bomb shape, medium height. Strong grower and exceptionally free bloomer. Fragrant. Early. **50c each.**
- 8.9 **MME. EMILE LEMOINE** (Lemoine, 1899). Large, full blooms of soft flesh-pink. Tall strong stems. Midseason. **\$1.00 each.**
- 8.5 **MME. EMILE GALLE** (Crousse, 1881). Shell-pink. Large, compact, flat flowers of the rose type. Milk-white center. Free and reliable bloomer. Late. **50c each.**
- 9.4 **MME. JULES DESSERT** (Dessert, 1909). White, shaded with buff and salmon tints; large flower. Medium height, strong grower. Midseason. A superior variety. **\$1.50 each.**
- 8.6 **MME. AUGUSTE DESSERT** (Dessert, 1899). Violet-rose. Semi-rose type, large, perfect flower tinged with carmine. A good, free blooming, early mid-season variety. **\$1.50 each.**
- 8.2 **MARCELLA DESSERT** (Dessert, 1899). Creamy white, lightly spotted with lilac, center flecked crimson; crown type. Midseason; fragrant. **\$1.50 each.**
- 7.5 **MARECHAL VAILLANT** (Calot, 1867). Light red. Rose type, immense blooms. Late. **50c each.**
- 8.9 **MARIE CROUSSE** (Crousse, 1892). Pale lilac-rose. Enormous, full, globular flowers on long, strong stems. Midseason. **\$1.00 each.**
- 8.5 **MARIE LEMOINE** (Calot, 1869). Pure white. Large, very compact, rose type, center cream-white. Fragrant. Medium height. Extra strong stems. Very late. **50c each.**
- 9.1 **MARTHA BULLOCH** (Brand, 1907). Rose-pink. Enormous, cup-shaped blooms often ten inches across. Outer petals shading to silvery shell-pink, stalk strong and erect. Fragrant. Gigantic size and exquisitely beautiful. **\$2.00 each.**
- 8.7 **MARY BRAND** (Brand, 1907). Vivid Crimson. Golden stamens through the center; very fragrant. One of the best of all reds. Immense heads of bloom. **\$1.00 each.**
- 9.0 **MARY WOODBURY SHAYLOR** (Shaylor). Pink. The guard petals are shell-pink and the center a creamy yellow. Dwarf grower with stiff stems. Profuse bloomer. **\$2.50 each.**
- 8.4 **MARGUERITE GERARD** (Crousse, 1892). Flesh-pink. Enormous, flat flowers with broad petals, blooming in clusters. A free bloomer in late midseason. Medium height and spreading habit. **50c each.**
- 7.3 **MIDNIGHT** (Brand, 1907). Deep maroon. Loose, semi-rose type. Medium early plume-shaped flowers. **50c each.**
- MISS HENNIGER** (Terry). Cream-white, with very long, open petals, giving it the chrysanthemum effect so much desired in Peonies. Strong grower and free bloomer. Midseason. Buds show a trace of flesh-pink, but mature bloom is pure white. **\$1.00 each.**
- 9.2 **MONS. JULES ELIE** (Crousse, 1888). Lilac pink. Enormous full flower, crown type, resembles a chrysanthemum; glossy lilac-pink with a silvery sheen. Early bloomer. Very fragrant. One of the highest rated of the older varieties. **75c each.**
- 7.8 **MODELLE DE PERFECTION** (Crousse, 1875). Violet-rose; large, compact flower, very symmetrical. Medium dwarf plant. Free bloomer. Late. **\$1.00 each.**
- 9.0 **MILTON HILL** (Richardson, 1891). Shell-pink. Large flat flower of perfect rose shape. Strong, medium height with sturdy stems. Late. **\$2.00 each.**
- 8.2 **MOSES HULL** (Brand, 1907). Deep rose-pink. Very large, loose, cupped, tufted petaloids, somewhat mottled. Delicate fragrance. Midseason. **50c each.**
- 8.3 **MONS. DUPONT** (Calot, 1872). Creamy white. Well formed, cup-shaped bloom, center splashed with crimson and showing stamens. Tall, erect, fragrant. Late midseason. **75c each.**
- 8.8 **MONS. M. CAHUZAC** (Dessert, 1899). Dark red. Medium to large, globular rose type; medium height. Early midseason. The darkest Peony grown. **\$1.75 each.**
- 8.3 **MRS. A. G. RUGGLES** (Brand, 1913). Light pink. Large, semi-double type. Petals long and fringed. Late. Strong grower and a wonderful flower. **\$2.00 each.**
- 9.6 **MRS. A. M. BRAND** (Brand, 1925). Beautiful pure white, of immense size, exquisite form. Good, strong stems, healthy light green foliage. Awarded the gold metal at the 1925 American Peony Show in St. Paul. **\$10.00 each.**
- 7.8 **MRS. CAREW** (Brand, 1907). Delicate pink. Large, full flower; often comes in clusters of four to six. Midseason. **50c each.**
- 9.0 **MRS. FRANK BEACH** (Brand, 1925). Beautiful creamy white flower like Jubilee. Dwarfish grower. Late. Given an award of merit at the London, Ontario International Show. **\$5.00 each.**
- 9.0 **MRS. JOHN M. KLEITSCH** (Brand, 1925). Deep lavender-pink, broad, stiff petals and a color not duplicated by any other Peony. **\$7.50 each.**
- 9.1 **MYRTLE GENTRY** (Brand, 1925). Large flowers of delicate salmon-pink. Tall, erect grower and a regular and profuse bloomer. Very fragrant. Awarded the American Peony Society's silver medal at St. Paul, 1925. **\$5.00 each.**
- 9.0 **NINA SECOR** (Secor). Pure white. Beautiful clear white of large size and splendid form. Very late. **\$4.00 each.**
- 8.5 **OCTAVIE DEMAY** (Calot, 1867). Pale pink. Very large, flat crown type. Exceedingly fragrant. Very dwarf habit. Free bloomer. Early. **50c each.**
- OFFICINALIS ROSEA**. Deep rose-pink. Similar to the *Officinalis Rubra*. **50c each.**
- OFFICINALIS RUBRA**. The old deep bright red Peony of the old-time garden. Very early. **75c ea.**

"More for Your Money"

- 7.4 **OLD SILVER TIP** (Brand, 1918). Soft madder-rose Semi-rose type. Petals silver tipped. Very prolific. Late midseason. **\$1.00 each.**
- 8.8 **PHOEBE CAREY** (Brand, 1907). Shell-pink, loosely formed blooms of exquisite loveliness, deeper center. Fragrant. Very late. **\$2.00 each.**
- 9.2 **PHILLIPPE RIVOIRE** (Rivoire, 1911). Very dark crimson. Large, well formed, cup-shaped flowers of rose type. Strong grower. Fragrant. Early. A very striking and large bloom. **\$5.00 each.**
- 7.7 **PHILOMELE** (Calot, 1861). Old rose, collar of buff petals. **\$1.00 each.**
- 9.0 **PHYLLIS KELWAY** (Kelway, 1908). Very large, rose-pink paling to white in center, showing many stamens. Floriferous. Midseason. **\$4.00 each.**
- 8.2 **PIERRE DUCHARTRE** (Crousse, 1895). Deep pink. Large, compact, globular blooms. Rose type. Fragrant. **\$1.00 each.**
- 8.9 **PRIDE OF ESSEX** (Thurlow, 1916). Deep flesh pink. **\$2.00 each.**
- 8.6 **PRIMEVERE** (Lemoine, 1907). Buff with sulphur yellow center. Large, flat flower. Tall, strong and free bloomer. Very fragrant. Midseason. Nearest approach to a yellow Peony. **\$1.50 each.**
- 8.5 **PRINCE OF DARKNESS** (Brand, 1907). Dark maroon. Large, loose, semi-rose type. Early One of the darkest Peonies in existence. **50c each.**
- 7.2 **PURPUREA SUPERBA** (Delache, 1855). Carmine-rose. Large, fine formed flowers of even color. Very tall, free bloomer. Midseason. **50c each.**
- 7.2 **QUEEN VICTORIA** (Kelway, 1830). White; bomb type. Early midseason. Good for cut flowers. An old standby. **50c each.**
- 7.9 **RACHEL** (Terry, 1900). Garnet-red. Rose type; medium height, profuse bloomer. Midseason. Extra good. **40c each.**
- 8.3 **RACHEL** (Lemoine, 1904). Soft pink. Well shaped, round flower. Strong, straight stems. **\$2.00 each.**
- 9.0 **RAOUL DESSERT** (Dessert, 1910). Clear mauve. Rose type, enormous, compact flower, mauve shaded carmine-pink and tinted silvery white. Free bloomer. Late midseason. Very attractive. **\$3.00 each.**
- 8.7 **REINE HORTENSE** (Calot, 1857). Soft pink. Semi-rose type, center of flower prominently flecked crimson. Midseason. Extra fine. **\$1.00 each.**
- 8.8 **RICHARD CARVEL** (Brand, 1913). Bright crimson. Large, bomb type; tall, profuse bloomer. Very fragrant. A magnificent early crimson Peony. **\$1.00 each.**
- 9.0 **ROSA BONHEUR** (Dessert, 1905). Light rose. Very large, flat flowers, borne in clusters. Rose type. Midseason. Extra fine. **\$1.50 each.**
- 7.4 **ROSE HERE** (Brand, 1907). Bright crimson. Strong grower, free bloomer; fine for cutting. Early. **50c each.**
- 8.8 **ROSETTE** (Dessert, 1918). Silvery flesh, shaded salmon at base of petals, flecked crimson; shaped like a rose. A splendid early variety of erect habit. **\$2.00 each.**
- 7.2 **RUBRA SUPERBA** (Richardson, 1871). Rich red. Very large, full double blooms; very fragrant. One of the really good late varieties. **50c each.**
- 9.0 **SARAH BERNHARDT** (Lemoine, 1906). Apple blossom pink, tipped silver; large size flowers in huge clusters. Magnificent. **\$1.00 each.**
- 7.7 **SISTER ANNIE** (Brand, 1907). Pink suffused with deep rose. Flat rose type with stamens showing their petals. Tall, stout stem. Midseason. **50c each.**
- 9.7 **SOLANGE** (Lemoine, 1907). The color of this variety is a cream-white with a suffusion of buff and pale salmon-pink. Double type. Very large and late. Compact, globular form, opening slowly and not acquiring full development for several days. An excellent exhibition variety. In seasons of moist and warm conditions buds sometimes fail to open. The plant is of medium height, only moderately floriferous. Very faint and not pleasing fragrance. Foliage and stems of average quality **\$2.00 each.**
- 7.6 **SOUV. DE L'EXPOSITION UNIVERSELLE** (Calot, 1867). Violet-rose, silvery reflex on tips. Very large, flat flower. Fragrant. Free bloomer. Late midseason. **50c each.**
- 8.8 **SOUVENIR DE LOUIS BIGOT** (Dessert, 1913). Bengal rose. Very large, convex bloom with fringed petals. Rose type. Midseason. Brilliant and beautiful. **\$2.00 each.**
- SUSAN B. ANTHONY** (Brand, 1907). Creamy pink. Semi-rose type. Midseason. Very pretty. **50c each.**
- 8.2 **SUZETTE** (Dessert, 1911). Bengal rose. Slightly shaded carmine-purple with silvery reflex and golden stamens. Medium size, strong, stout stems. Midseason. **\$1.00 each.**
- TENUIFOLIA**. Fern leaf, double red **\$2.00 each.**
- 9.8 **THERESE** (Dessert, 1904). One of the French masterpieces. Second highest rated Peony; and considered one of the world's finest varieties. The flowers are of enormous size, and true rose type, with delicate fragrance. Color rich satiny pink, with a lighter center. The plant is of vigorous growth, and very free blooming. With us always blooms the first year from planting. Medium height, strong stems. Heavy foliage. **\$2.00 each.**
- 9.4 **TOURANGELLE** (Dessert, 1910). Pearly white, overlaid with delicate mauve and shades of the La France rose. Very full, large, flat rose type flowers. Strong grower, free bloomer. Late midseason. One of the desirable varieties. **\$1.50 each.**
- 7.4 **UMBELLATA ROSEA** (Dessert, 1895). Violet-rose, shading to amber-white center. Large, informal rose type. Fragrant. Strong and free bloomer. Very early. **50c each.**
- 8.3 **VENUS** (Kelway, 1883). Pale hydrangea-pink. Tall, free bloomer. Extra fine for cut flowers. Midseason. **50c each.**
- 8.2 **VICTOIRE DE LA MARNE** (Dessert, 1915). Amaranth-red, silvery reflex. Very attractive, globular bloom of great size. **\$1.50 each.**
- 8.9 **VICTORY CHATEAU THIERRY** (Brand, 1925). Pure clear pink, petals of large size. Very fragrant and resembling a large Darwin Tulip. Strong grower and early. **\$15.00 each.**
- 9.3 **WALTER FAXON** (Richardson, 1904). Vivid salmon-shell-pink of a luminous intensity, unique in Peonies. This remarkable variety is at its best in the show room. The flowers are double, of medium size and attractive form; mildly fragrant. Fairly floriferous; good stems and foliage. **\$2.00 each.**
- 8.8 **W. F. CHRISTMAN** (Franklin). Flesh-pink An attractive flower, full rose type. Fragrant. Strong, sure bloomer. Midseason. **\$2.00 each.**
- 7.9 **WM. PENN** (Brand, 1907). Rose. Immense compact blooms, edges of petals notched. Strong, free bloomer. Very fragrant. Midseason. **40c each.**



Enjoy a Peony garden like this.



Photograph of one of our fields showing Sarah Bernhardt at its Best.

SINGLE PEONIES

- 8.4 **ALBIFLORA, THE BRIDE** (Dessert, 1902). Single white. Very large, fragrant, single white with long, yellow stamens. Very early, free blooming and tall. **\$1.00 each.**
BALLOIL (Origin unknown). Single red. **\$4.00 each.**
DUCHESS OF BEDFORD (Kelway). Single pink. **\$4.50 each.**
- 8.5 **MADLINE GAUTHIER** (Dessert, 1908). Large; early midseason. Light flesh-pink petals of waxy texture surrounding a center of yellow stamens and green-yellow carpels with red base and tips; fragrance poor. Medium tall; floriferous; strong, upright stems. **\$2.00 each.**
- 8.5 **MARGUERITE DESSERT** (Dessert, 1913). Very large; midseason. White, thickly powdered with pale rose-pink dots; small cluster of golden yellow stamens in center; carpels tipped red; fragrance faint but pleasing. Tall. Very floriferous; strong stems and foliage. **\$1.50 each.**
- 8.6 **NELLIE** (Kelway). Medium to large; midseason; two rows of undulated petals, rose-pink at first fading almost white; small tuft of yellow stamens in center; carpels ruddy green; dark rose tips and pink kernels at base. Dwarf; floriferous; stiff stems; blooms in clusters. Foliage narrow and wavy. **\$2.00 each.**
- 8.9 **PRIDE OF LANGPORT** (Kelway, 1909). This fine variety carries the highest rating of all the pink singles. The guard petals are large and well rounded, surrounding a center of long, yellow stamens, light green, tipped pink. It is a tall and vigorous grower with small, wiry stems that carry the flowers in clusters. The soft, pleasing pink color and delightful habit of growth make this a very desirable variety. **\$3.00 each.**
- VENISE** (Dessert, 1913). Single pink. **\$1.50 each.**

JAPANESE PEONIES

- 9.2 **AMA NO SODE** (Japan). Exceptionally large flower; petals bright rose-pink forming a saucer-like cup about an immense center of long, yellow staminoids with flattened, crinkled tips stained with rose; carpels green with yellowish tips and white kernels at the base. Medium height; vigorous growth; very floriferous; strong stems. Good foliage. **\$5.00 each.**
- BOBBIE BEE** (Hollis, 1907). Carmine-red, with gold center. **\$1.50 each.**
- CROWN ON CROWN**. Shades of pink. **\$1.00 each.**
- DAYBREAK**. Pale rose. **\$1.00 each.**
- 9.2 **FUYOJA** (Origin unknown). Medium size; mid-season. Dark purplish crimson guard petals of smooth texture and heart-shaped outline; center a cluster of dark old rose petaloids heavily tipped with pale buff or cream; carpels green; tipped pink and white; slightly fragrant. Tall; floriferous; strong stems. Foliage ruffled and tinged with red. **\$2.00 each.**
- GERALDINE** (Kelway). Carmine-violet. **\$1.00 each.**
- 8.2 **GOLD MINE** (Hollis, 1907). Medium size; mid-season. Dark rose-pink of irregular, cupped form; center of narrow whitish petaloids stained light pink and tipped with yellow; carpels ruddy green with pink tips and yellow base; poor fragrance. Medium growth; fairly floriferous; stiff stems. **\$2.00 each.**
- LEMON QUEEN**. Cream-white **\$1.00 each.**
- 7.6 **LA BOLAS** (Kelway). Dark crimson. **50c each.**
- 8.6 **MIKADO** (Japan, 1893). A very decorative garden variety which was introduced to this country by the Japanese exhibit at the Chicago World's Fair in 1893. Generally considered one of the best red Peonies of its type. A fine exhibition variety. It is medium size; midseason. Waved cupped petals of dark, dull crimson; center broad and flat, composed of thick staminoids stained dark rose-red, edged throughout their length and tipped with pale buff-yellow; carpels pale green, with white kernels at base and stringy buff-yellow tips. Tall; very floriferous; erect stems. Abundant, close-set foliage. **\$1.50 each.**
- 8.7 **RASHOEMON** (Japan). This is a variety that attracts very much attention in the field, not only because of the beauty of the flower but on account of the pleasing appearance of the plant. The foliage is a clear, glossy green, with crinkled and painted leaves. The blooms are large, the outer row of petals a deep rose-red surrounding a large tuft of crinkled golden filamental petals. **\$3.00 each.**
- 9.0 **SOME GANOKO** (Origin unknown). A dark red Japanese Peony of superior merit. It has two rows of guard petals instead of the usual one, and the guard petals are cup-shaped and are as lustrous as if they were varnished. As a cut flower it has no superior in color, is not as desirable for landscape purposes as Mikado or Rashoomon. **\$2.50 each.**
- TAKARADAMA** (Origin unknown). White; late. **\$2.50 each.**
- 9.4 **TAMATE BOKU** (Origin unknown). Very large; midseason. Enormous cupped petals of dark old rose-pink; center composed of very long, thread-like staminoids yellow at the base, with rose-pink, flat, crinkled tips tinted buff and yellow at the edges; downy pale green carpels with vivid pink line at the base and striking rose-red tips; faintly fragrant. Medium height, strong pyramidal habit; fairly free flowering; strong, stems. Leathery leaves. Generally considered the finest Japanese Peony. **\$15.00 each.**
- 8.9 **TOKIO** (Origin unknown). Very large; midseason. Cupped, waving guard petals of dull rose-pink; center of large, loose staminoids, narrow at the base with wide tips tinted pale yellow. Very tall; vigorous; fairly floriferous; strong, stiff stems. Dark, broad foliage. **\$2.50 each.**
- 9.0 **TOR NO MAKI** (Origin uncertain). Very large; mid-season. Long, undulated guard petals of pale bluish white, fading to pure white; center of whitish staminoids edged and suffused yellow at the tips; carpels pale green; slightly fragrant. Medium height; good growth and foliage; fairly floriferous; strong stems. **\$5.00 each.**

"More for Your Money"

NEW PEONIES ORIGINATED BY OURSELVES

For over twenty years we have been growing Peonies from seed. We have not tried to put a lot of varieties onto the market, but have enjoyed the work so much and have saved varieties that are so good that we thought our friends might like them as well as we do, so we are offering about a dozen of them for sale this year for the first time.

We have made the descriptions just as brief as we possibly can in order to save space. Many of them are unusually fine, and we know you will be as proud to have them in your garden as we are to have them in ours.

In addition to offering these plants we are going to offer seed. We believe you will enjoy growing them just as much as we have, but we must warn you not to attempt it unless you have lots of patience, because it takes a long time to get results.

How to Grow Peonies from Seed

The seed should be planted early in the fall, soon after it ripens. Plant the seed about an inch deep and two or three inches apart in a good loam soil as early in the fall as is possible, and most of them will then sprout the next spring, although some may take two seasons.

They should be allowed to grow for at least two years, when the little plants should be taken up and transplanted to about 18 inches apart. After this transplanting it may take two or three years more before they will come into bloom, but when they do, you will be amazed at the different colors you will get. You never know whether they will be single or double, but there is something fascinating about it all, and the hope that you may have something real outstanding is always there to encourage you in your efforts. You very rarely get a new variety that has outstanding qualities sufficient to justify naming it, but this does not mean they are not beautiful, and once you get started with this work, you will have a hard time to ever stop it.



Typical bloom of the Japanese type of Peony.

PEONY SEED . . . Big Fat Ones . . . 50 for \$1.00 Postpaid

ANN PFEIFFER (Pfeiffer, 1932). Double deep rose, fragrant, mammoth size, blooms 8 to 10 inches in diameter, medium tall, midseason, good bloomer. **\$5.00 each.**

BLUSHING BRIDE (Pfeiffer, 1932). Single delicate pink fading to white, early, rather dwarf, free bloomer, good size flower. **\$5.00 each.**

ELAINE (Pfeiffer, 1932). Double, medium tall, delicate pink, flecked crimson in the center, midseason, fragrant. **\$3.00 each.**

FLAMING YOUTH (Pfeiffer, 1932). Single, crimson, early robust grower, profuse bloomer, wonderfully fine variety for landscaping. **\$2.50 each.**

HELENE WILLIAMS (Pfeiffer, 1932). Hydrangea pink, medium early, fragrant, profuse bloomer. **\$1.00 each.**

GOLDEN BEAUTY (Pfeiffer, 1932). Jap type, dwarf habit, white guard petals, bright yellow center, yellowish green carpels. Excellent landscape variety. **\$5.00 each.**

FRANCES HERNDON (1932, Pfeiffer). Deep rose, fragrant, yellow stamens showing through the petals, medium tall, free bloomer, midseason. **\$2.00 each.**

IRENE COE (Pfeiffer, 1932). Semi-double, sea-shell pink, fragrant, good bloomer **\$2 ea.**

LEONA CAUSTIN (Pfeiffer, 1932). Semi-double, deep rose pink, large bloom, medium tall, free bloomer, mid-season. **\$2.00 each.**

LULU WILSON (Pfeiffer, 1932). Single, very large, light pink, profuse bloomer, medium height, earliest of all. **\$1.00 each.**

MARIAN PFEIFFER (Pfeiffer, 1925). Brilliant bright double red without a trace of magenta or purple. An outstanding red with a decidedly spicy rose geranium fragrance. Rose type, tall, profuse bloomer. **\$10 each.**

PFEIFFER'S PRIDE. Late double, rose type of fine form; outer petals a peculiar shade of light pink, shading deeper to the center, with a ring of yellow stamens surrounding a tuft of deeper pink blotched with crimson. Strong, stiff stems of medium height, pleasing fragrance. A really fine new Peony. **\$5.00 each.**

RUTH MARKLE (Pfeiffer, 1932). Double light pink, tall, fragrant, good propagator, late. **\$2.00 each.**

SETTING SUN (Pfeiffer, 1932). Single dark crimson, profuse bloomer, medium height, early. **\$2.00 each.**

VIRGINIA MARY (Pfeiffer, 1932). Full double dark rose pink, rose type, early, excellent cut flower variety. **\$1.00 each.**



Two Peony fields, showing thousands of plants at their best.

PEONY BARGAIN OFFERS

Collection No. 1

This is a Collection of four beautiful Peonies. Not the highest priced or the highest rated, but four fine Peonies you will be proud to start with. It consists of a dark pink, light pink, white and dark red. Last year these four Peonies sold for \$3.00, this year you can have them in this Collection for only \$1.00.

Edulis Superba—Dark pink
Susan B. Anthony—White
Rachel—Dark red
La Perle—Light pink

All 4 for Only **\$1**
 Postpaid

Collection No. 2

This Collection consists of six extra fine, high rated Peonies. The only reason we are able to list them in a Bargain Collection like this is because our stock of these varieties is unusually large. Because of this we are able to pass along to you this extremely high class Bargain for one-third of their last years list price.

Albert Crousse—Seashell pink
Baroness Schroeder—Flesh white
Chestine Gowdy—Silvery pink
Karl Rosefield—Dark red
Mons. Jules Elie—Lilac pink
Chas. McKellip—Crimson

All 6 for Only **\$2**
 Postpaid

Collection No. 3

Extra Fine, All Prize Winners. The varieties in this Collection are included in all of the world's best Collections.

Sarah Bernhardt—Apple blossom pink..... \$1.00
Mons. M. Cahuzac—Darkest red..... 1.75
Mary Brand—Vivid Crimson..... 1.00
Marie Crousse—Lilac rose..... 1.00
Mme. Emile Lemoine—Flesh white..... 1.00
La France—Rose white..... 1.50
Jubilee—Mammoth white..... 1.00
Richard Carvel—Early bright crimson..... 1.00

Total new low price **\$9.25**

All 8 for Only **\$7.50**
 Postpaid

Collection No. 4

Your Own Selection
 Order By Number

- 1 **Cherry Hill**—Garnet red
- 2 **Claire Dubois**—Satiny pink
- 3 **Elwood Pleas**—Shell pink
- 4 **Fanny Crosby**—Yellow center
- 5 **Frances Willard**—Creamy white
- 6 **Luetta Pfeiffer**—Blush pink
- 7 **Mary Brand**—Vivid crimson
- 8 **Reine Hortense**—Soft pink, flecked red
- 9 **Suzette**—Bengal rose
- 10 **Karl Rosefield**—Rich crimson
- 11 **Eugene Verdier**—Hydrangea pink
- 12 **Francois Rosseau**—Brilliant red
- 13 **Lady Alex. Duff**—Flesh pink
- 14 **Richard Carvel**—Bright crimson

YOUR CHOICE

\$5 for any 7 **\$9**
 All 14 for

Collection No. 5

DeLuxe-Super Quality

The World's highest rated Peonies at prices no more than ordinary ones sold for a year ago.

99 **Le Cygne**..... \$3.00
 98 **Therese**..... 2.00
 97 **Solange**..... 2.00
 94 **Tourangelle**..... 1.50
 93 **Walter Faxon**..... 2.00
 91 **Martha Bullock**..... 2.00
 90 **Longfellow**..... 1.50

Total new low price **\$14.00**

All 7 for Only **\$10**
 Postpaid

Collection No. 6

Jap Collection

Fuyoja—Maroon red
Mikado—Red
Geraldine—Carmine violet
La Bolas—Dark crimson
Crown on Crown—Shades of pink

All real good varieties, and for less than Fuyoja cost alone a year ago.

All 5 for Only **\$5**
 Postpaid

“More for Your Money”

PFEIFFER'S IRIS

The Perennials of Unusual Blendings of Color and Beauty

Irises are undoubtedly one of the most popular of all the hardy perennials. No other perennial plant available to our gardens combines so many good qualities. They are inexpensive, extremely hardy, may be grown under a great variety of conditions with a minimum amount of care, and they have a wonderful range of colors from the lightest pale yellow to rich gold and deep bronze, delicate pale blues, and lavenders to dark blue and violet to deepest purple, light pink to claret and deep maroon, all the shades of lavender, mauve, violet and pure white, with an endless array of combination colors.

Irises are of easy culture, and can be planted almost any time the ground is not frozen, they will do best in a sunny, well drained location in a medium loose, mellow soil. Irises must be planted shallow; many people plant too deep and the plants rot. The rhizome or fleshy part of the root should be just under the surface of the ground. If your location is a low spot where water will stand, it is advisable to make raised beds, so the water cannot stand around the roots. Good drainage is necessary. If the soil is sour, an application of hydrated lime is advisable. Never use manure.

A WORD ABOUT PLANTS AND PRICES

Our prices are based on strong, single divisions, and we always send out the best plants available. It should be understood that while we strongly advise planting in July and August, the plants are not as large or well developed as they are in the fall, but it is to your advantage to have the plants make their growth in your garden rather than our own. For southern states, better results might be obtained if Irises are planted in September or October.

MASS PLANTING ADVISABLE

An Iris display in the garden is much more effective if they are planted in groups of from three to a dozen plants of each variety, and to stimulate an interest for mass planting, we are making attractively low prices by the dozen on many varieties.

COLLECTIONS

Largely for the benefit of the beginner in Iris growing we are offering some exceptional collections and combinations listed on another page. For the Iris fancier who wants the best and knows just what he or she wants, we have a list of varieties that will appeal to you.

GUARANTEE

All plants are guaranteed to be true to name, vigorous and healthy when received. If found to be otherwise, we will either replace with true stock or refund your money. Mistakes are made, but not intentionally.

Prices include prepayment of postage in the United States only.

RATINGS OF IRIS

The figures at the left of varieties on these pages are the latest revised ratings as given by the American Iris Society in 1927, 100 points being perfect. Two ratings

are given on Iris: the first two figures are Exhibition ratings, and the next two are Garden ratings.

PRIZE WINNING IRISES

The quality of our plants is unsurpassed. At the Minneapolis Iris Show held in Minneapolis June 2nd and 3rd, 1932 under the auspices of the Minnesota Horticultural Society at the Northwestern National Bank Building, we made twenty three entries and won twenty one prizes, fourteen firsts, six seconds and one third, besides the Sweepstakes for the most prize points scored, and a silver loving cup for the most comprehensive display at the show. This we did after carrying the flowers 143 miles in an automobile. When you get plants from Pfeiffers you get these prize winning strains at no additional cost to you.

LIST OF IRIS VARIETIES

Our list of Iris for 1932 will compare favorably with any collection in the United States. We have discarded practically every variety that does not rate seventy or better, and have added many of the highest rated, and best varieties in existence.

In the list following, the letter "S" means the "standards" or upright petals; the letter "F" means the "falls" or drooping petals.

79-81 **ABENDA** (Perry). S. light lilac-pink, tinted buff; F. cherry-red in color. An excellent landscape variety. 36 inches. 35c each; 3 for 90c.

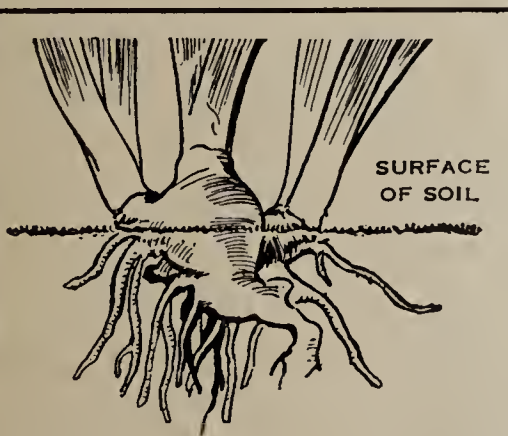
83-82 **AFTERGLOW** (Sturt, 1917). Soft, grayish lavender-pink, shading to rich yellow through the center. 25c each; 3 for 60c.

ALABASTER (Andrews, 1926). A very fine white flower of good form and texture. 50c each; 3 for \$1.25

86-87 **ALCAZAR** (Vilmorin). A giant in flower and growth. S. light bluish violet; F. deep purple, bronze veined throat. Beautiful. 3 to 4 feet. 15c each; 12 for 25c.



Single Stem of
Lent A. Williamson



HOW TO PLANT IRIS ROOTS

Set plants on light, well drained soil where water will not stand. The rhizome or fleshy part of the root should be at the ground level. If soil is sour, ground limestone is beneficial. Use no fertilizer.

Charles A. Pfeiffer's "GOODTIMES" Catalog



Iris field one year after planting.

- 85-85 **ALVARADO** (Mohr-Mitchell, 1926). 40 inches. Deep rich purple blooms; seedling of Lent A. Williamson and Conquistador. Tall, vigorous grower. **40c each; 3 for \$1.00.**
- 74-75 **AMAS**. Blue-violet bi-color. Large flower. 32 inches. **25c each; 3 for 60c.**
- 92-91 **AMBASSADEUR** (Vilmorin). An aristocrat among Irises. It is one of the greatest Irises in the world, regardless of price. It is a very large flower, with smoky, reddish violet standards and dark velvety purple-maroon falls of good texture; heart and styles yellow. 3 feet high. **Special price this year, 25c each; 3 for 60c.**
- 88-88 **AMBER** (Dykes, 1924). Very striking, fine, pure, deep yellow with prominent reddish gold beard. Strong grower. 40 inches. Very large flower. **25c each; 3 for 60c.**
- 75-80 **AM. BLACK PRINCE**. S. and F. rich velvety dark purple. 24 inches. **15c each; 2 for 25c.**
- 80-77 **ANNA FARR** (Farr). S. white, bordered pale blue; F. pure white, pale blue markings at base. **25c each; 3 for 60c.**
- ANNIE LAURIE** (Moore, 1927). This is as fair as its namesake. The standards and falls are changeable orchid shades. The coloring is the most delicate and beautiful imaginable. The falls are a trifle darker orchid than the standards. Yellow beard. The stamens have midrib of lavender. Large blossoms. Height 3 feet. Hardy. **50c each; 3 for \$1.25.**
- 86-85 **ANN PAGE** (Hort., 1919). A lovely pale blue with large flowers of splendid shape. S. and F. pale lavender-blue; F. heavily penciled brown at the haft. Similar in color to the Crusader. Stems stout and erect. 36 inches. **25c each; 3 for 60c.**
- 81-88 **APHRODITE** (Dykes, 1922). A clear bright violet-pink self, with no veinings to detract. The best of the violet-pinks; good size, personal form and a prolific bloomer. **35c each; 3 for 90c.**
- ARAPAHOE**. S. lavender, F. darker reticulated white at the base. White beard, medium height. **25c each; 3 for 60c.**
- 79-81 **ARCHEVEQUE** (Vilmorin). S. deep purple-violet; F. rich, deep velvety violet. **25c each; 3 for 60c.**
- ARIEL** (Murrell). 24 inches. Light violet self. The flower is of good shape and color, and is a profuse bloomer. Low grower. **25c each; 3 for 60c.**
- 92-88 **ASIA** (Yeld, 1920). S. pale lavender suffused and reticulated yellow at the base; F. light violet-purple, pale at the edges and heavily reticulated at the haft; bright yellow beard. Exceedingly strong and free flowering. 54 inches. **25c each; 3 for 60c.**
- AURIFERO** (Mohr-Mitchell, 1927). 42 inches. Tall standards of palest lavender and flaring falls of flushed rosy lavender. A brilliant golden beard gives its center a glow which is its distinctive note. Large flowers and rampant growth. **50c each; 3 for \$1.25.**
- 90-89 **BALLERINE** (Vilmorin). S. clear light blue; F. darker blue. Tall and large. 48 inches. **25c each; 3 for 60c.**
- 86-85 **BANDOLLERO** (Mohr Mitchell, 1926). 40 inches. The flowers are beautifully veined and of a distinctive light blue. Tall and vigorous. **35c each; 3 for 90c.**
- 69-71 **BLUE JAY** (Farr). S. bright, clear blue; F. intense dark blue. 30 inches. **25c each; 3 for 60c.**
- BRENTHIS** (Williamson, 1927). A fine large flower with standards of lavender violet tinged with yellow. Falls pansy violet with a white throat tinged yellow. **50c each.**
- 91-90 **BRUNO** (Bliss, 1922). S. rose tinted, shading to yellow at the base. F. deep rich velvety red-purple of exceptional size and substance. Very distinct. 3 feet. **50c each; 3 for \$1.25.**
- BUTO** (Sass, 1927). A very large, rich velvety deep royal purple flower of perfect form and fine satiny texture. Very early. **\$1.00 each.**
- 84-80 **B. Y. MORRISON** (Sturt., 1918). S. pale lavender-violet; F. velvety raisin-purple, widely bordered with lavender. Slow grower until well established, strong with slender stalk and foliage. 33 inches. **25c each; 3 for 60c.**
- 96-91 **CANDLELIGHT** (Andrews, 1926). Large flowers of pale pinkish lavender illuminated by a golden glow, producing a soft color effect. A very tall and vigorous growing plant. The highest rated of any exhibition Iris and truly a most outstanding variety. No real Iris lover should be without this variety. **\$1.00 each.**
- 84-83 **CANOPUS** (Bliss, 1919). Dominion seedling. S. reddish violet; F. rich pansy-violet marked with red-brown on cream base. Yellow beard. Large flower of pleasing fragrance. Strong, branching spikes. 33 inches. **25c each; 3 for 60c.**
- 67-74 **C. A. PFEIFFER** (Fryer). S. large, blue; F. pansy-violet. Very fragrant and showy. Very good for mass planting. **15c each; 2 for 25c; \$1.00 per dozen.**
- 71-72 **CAPRICE** (Vilmorin, 1898). S. reddish purple; F. a shade deeper, blending to a soft lavender at the base. **15c each; 2 for 25c.**
- 92-90 **CARDINAL** (Bliss, 1919). One of the rich flowers of the dominion race. S. distinctive shade of lavender, overlaid rose; F. a rich velvety prune-purple of wonderful glossy texture. Stock of this variety is very scarce. **\$1.00 each; 3 for \$2.50.**
- 84-83 **CAROLINE E. STRINGER** (Sass, 1925). Large, delicately rose flushed flower of exceptional substance. 33 inches. **50c each; 3 for 1.25.**
- 72-77 **CAVALIER**. Standards violet blue, Falls blue purple. **25c each; 3 for 60c.**
- 79-81 **CECIL MINTURN** (Farr). S. and F. a uniform shade of Cattleya rose. Free bloomer. 24 inches. **25c each; 3 for 60c.**
- 66-72 **CELESTE**. Pure azure-blue. 30 inches. **15c each; 2 for 25c.**
- 84-82 **CHALICE** (Sturt., 1924). A very beautiful true yellow self even to the markings on the haft. **25c each; 3 for 60c.**
- 82-85 **CHASSEUR** (Vilmorin, 1923). The tallest and best yellow Iris. The flowers are large, with broad standards and well rounded falls of clear, deep yellow, shaded lighter at the center of the falls and marked purplish red at the tips. 36 inches. **50c each; 3 for \$1.25.**
- CHESTNUT** (Sass, 1930). S. Cinnamon drab ruffled. F. cream dotted petunia violet, very fine. **\$1.00 each.**
- CHICOREE**. S. and F. Dark blue. 30 inches tall. **25c each; 3 for 60c.**
- CHIEF** (Sass, 1926). Dark royal purple, flowers exceptionally large, a fine low growing Iris effective in mass plantings. 24 inches. **35c each.**

"More for Your Money"

- CINNABAR** (Williamson, 1928). A splendid violet purple bi-color, one of the very best of the Williamson introductions. Large flower of fine form. 42 inches. **\$1.50 each.**
- 85-85 CITRONELLA** (Bliss). S. pure lemon-yellow; F. morocco-red with a yellow line through the center and a yellow margin; red-brown markings on yellow base of F. Splendid flower of good substance. 33 inches. **25c each; 3 for 60c.**
- 80-80 CLUNY** (Vilmorin, 1920). S. soft lilac-blue; F. darker. Early. 39 inches. **25c each; 3 for 60c.**
- 88-85 CONCHOBAR** (Bliss, 1921). Red, purple. A rival to Bruno. **50c each; 3 for \$1.25.**
- 93-92 CORONATION** (Moore, 1927). This is the yellow Iris all of us have been looking for. Standards, falls, beard and stamens are golden yellow. The same color as Sherwin-Wright except for a little lighter on the very tips of the falls. The flowers are as large as Monsignor, and of good substance. It is a long and profuse bloomer, and is strong and hardy. Height 3 to 4 feet. It attracts immediate attention even in a large field of Iris. We believe that this is the best large dark yellow Iris on the market, and that a great future is ahead of it. **\$1.00 each; 3 for \$2.50.**
- 82-84 CORRIDA** (Millet, 1914). Sky-blue self, of delicate and graceful habit. S. light violet-blue; F. deeper shade. Free flowering and late. 42 inches. **25c each; 3 for 60c.**
- 85-83 CRIMSON GLOW** (Millet, 1924). Brilliant crimson-rose in color with the flowers large and well shaped. Orange beard with broad falls and frilled standards. Very free flowering and a wonderful variety for landscape effect. **50c each; 3 for \$1.25.**
- 85-85 CRUSADER** (Forster, 1913). S. light blue; F. deep violet-blue with orange beard. Very good form and color, large flowers. 42 inches. **25c each; 3 for 60c.**
- 81-82 DAMOSEL** (Morrison, 1922). Large, free flowering; plicata filling, rosy lavender, creamy texture, and fine form. Medium tall. **25c each; 3 for 60c.**
- DEESSE** (Cayeaux, 1926). 36 inches. One of the finest Iris. The falls are a very brilliant red tone, with lavender standards. **50c each.**
- DEJAH** (Perry). S. dark silver-blue; F. bright mauve, bold yellow and white beard. Mid-season. 40 inches. **25c each; 3 for 60c.**
- 78-78 DIMITY** (Bliss, 1917). S. white, veined and penciled mauve; F. wide, long and spreading, veined with lavender. Beard white tipped with brown. 36 inches. **25c each; 3 for 60c.**
- 93-91 DOLLY MADISON** (Williamson, 1927). 36 inches. Large flowers, 4½ inches high and 5 inches wide. Mauve standards arching and shading yellow at the base. Broad, flaring falls of lilac, maroon veined. Beard bright orange. Very free flowering, distinct in form and an exceptionally robust variety. One of the finest introductions of recent years. **\$1.00 each.**
- 88-82 DOMINION** (Bliss, 1917). This variety started a new era in Iris breeding. The newest and finest Iris have Dominion bloom. Standards light bluish violet, large and erect; Falls deep rich indigo purple, velvet arched and of exceptional substance. 36 inches. **\$1.00 each.**
- DR. CHAS. H. MAYO** (Fryer, 1923). 40 inches. This is Fryer's finest introduction. A beautiful soft pink-toned Iris. It is very fragrant, early, has a long flowering season and a very rugged constitution. **50c each; 3 for \$1.25.**
- 89-87 DUKE OF BEDFORD** (Bliss, 1922). S. deep violet; F. velvety black-purple. Dominion seedling. 36 inches. **50c each; 3 for \$1.25.**
- 85-84 DREAM** (Sturt., 1918). A tall growing variety of graceful Pallida habit. 36 inches. S. lilac-pink; F. slightly darker with orange beard, almost the same color as Susan Bliss. It is a strong, vigorous grower and free bloomer. Flowers of medium size; stalks tall but well branched, moderately fragrant. Very popular and in big demand. **25c each; 3 for 60c.**
- DUKE OF YORK** (Perry, 1925). A giant flower, perfect shape. S. soft mauve-blue faintly stained bronze. S. soft mauve blue, orange beard. 48 inches. **25c each; 3 for 60c.**
- EL CAPITAN** (Mohr-Mitchell, 1926). S and F. Bluish violet. Majestic flowers with flaring falls, are beautifully posed on a noble spike. **75c each.**
- 75-76 ELDORADO** (Vilmorin). S. yellowish bronze; F. bright violet-purple. 30 inches. **15c each; 2 for 25c.**
- ELIZABETH EGELBERG.** Flowers are carried on a strong stiff stem that starts branching near the ground and carry as many as 9 open flowers at one time. Standards, broad and overlapping, a beautiful blend of pink and lavender. Falls, flaring almost horizontal, aconite violet. The general effect being a beautiful mauve pink. 48 inches. **\$3.00 each.**
- ELSINORE** (Hall, 1925). 3 feet. Flowers of primrose, yellow, bordered with purple, **\$1.00 each; 3 for \$2.50.**
- 83-86 ESPLENDIDO** (Mohr, 1924). A very large, red-purple bicolor, with beautifully branched stems. **25c each; 3 for 60c.**
- 85-87 EVADNE** (Bliss, 1921). S. deep rose-violet, slightly tinted buff; F. very rich velvety rose-violet, deeper than S. F. veined reddish brown on white base. Burnt orange beard. Splendid flower of good substance. 36 inches. **35c each; 3 for 90c.**
- 76-78 FAIRY** (Kennicott). White delicately suffused soft blue. Very fragrant. 38 inches. **15c each; 2 for 25c.**
- 80-80 FLAMMENSCHWERT** (G. & K., 1920). Improved Iris King, much taller and larger flowers. S. clear golden yellow. **25c each; 3 for 60c.**
- 70-73 FLAVESCENS.** The common early pale yellow Iris. 30 inches. **15c each; 2 for 25c.**
- 68-67 FRANKLIN BEYNON** (Perry, 1923). Color of Mrs. Alan Grey, but a foot taller and flowers twice as large. **25c each; 3 for 60c.**
- 89-85 FRIEDA MOHR** (Mohr-Mitchell, 1926). It is a pink bicolor with deep lilac-rose falls and standards of pinkish lilac. It far exceeds any other Iris of similar color, in size, shape, vigor of growth, and brilliancy of color. Selected from all the other Mohr seedlings to bear the name of the originator's wife. An outstanding variety among the new introductions and for many years to come it will be one of the very finest of Irises. 42 inches. **\$1.00 each.**
- 82-82 GAVIOTA** (Mohr, 1924). A creamy white with both S. and F. distinctly edged yellow. Medium size flower of unusual color. **25c each; 3 for 60c.**



Iris field two years after planting.

Charles A. Pfeiffer's "GOODTIMES" Catalog

- 90-88 **GEO. J. TRIBOLET** (Williamson, 1926). 42 inches. A fine velvety blackish red-purple with deep violet standards. Tall and vigorous. A truly magnificent Iris. **35c each; 3 for 90c.**
- 91-90 **GERMAINE PERTHUIS** (Millet, 1924). S. violet-purple; F. deeper violet lighted with a prominent yellow beard. The flower is of unequalled velvety appearance and deliciously scented. A descendent of Mme. Gaudichau. **75c each; 3 for \$2.00.**
- 89-86 **GLAMOUR** (Bliss, 1922). 36 inches. A very fine Dominion seedling. S. mauve tinted heliotrope. F. red purple. A very handsome variety **50c each; 3 for \$1.25.**
- 86-87 **GOLD IMPERIAL** (Sturtevant, 1924). A yellow self of a wonderful bright color. S. and F. empire to lemon-chrome-yellow, beard orange. 36 inches. **25c each; 3 for 60c.**
- 65-65 **GERTRUDE** (Peterson, 1907). S. and F. a rare shade of violet-blue. 32 inches. **15c each; 2 for 25c.**
- 83-81 **HALO** (Yeld). An Iris of the Lord of June type with colors somewhat similar to Ann Page. 40 inches. **25c each; 3 for 60c.**
- 79-82 **HARMONY** (Dykes, 1923). S. and F. deep rich purple-blue. **25c each; 3 for 60c.**
- 70-74 **HER MAJESTY** (Perry, 1903). S. lovely rose-pink; F. bright crimson tinged a brighter shade. 30 inches. **15c each; 2 for 25c.**
- 83-84 **IMPERATOR** (Cayeux). S. red-violet tinted buff; F. deeper red-violet with brown markings at the base. Very large, late flowering of good size and excellent form. **35c each; 3 for 90c.**
- 80-80 **IRIS KING** (Goos and Koenemann, 1907). S. clear lemon-yellow; F. rich maroon bordered yellow. One of the most popular of the Irises. **25c each; 3 for 60c.**
- 83-84 **ISOLINE** (Vilmorin, 1904). S. silvery lilac, 4 inches long; F. beautiful mauve. 36 inches. Very large flowers, beautiful and distinct Iris. **15c each; 2 for 25c.**
- 68-86 **JAPANESE** (Farr, 1922). S. lavender-white, flecked violet; F. deep violet, edged pale lavender, beard copper yellow. It has the appearance of a Japanese Iris, as if there were six falls and no standards. **25c each; 3 for 60c.**
- 73-71 **JEANNE D'ARC** (Verdier, 1907). Patterned white; fragrant. **25c each. 3 for 60c.**
- 85-84 **JUBILEE** (Sass, 1923). 30 inches. Late. Ruffled erect soft yellow standards; Falls creamy white, tinged yellow at the tip. A fine flower of excellent form and unique coloring. **35c each.**
- 85-84 **JULIA MARLOWE** (Shull, 1924) 40 inches. Very large flowers with violet standards and raisin-purple falls of Magnifica shape. The colors produce a glowing pink and red effect in the sun. Strong, well branched stalks. **35c each.**
- 78-81 **JUNIATA** (Farr, 1909). S. and F. clear blue, large, fragrant flowers, very tall, 3 to 4 feet. **15c each; 2 for 25c.**
- 80-83 **LADY BYNG** (Bliss, 1922). 36 inches. A very beautiful flower of clear pale lavender with a suffusion of rose. Very free growing. A sister seedling of Susan Bliss **25c each; 3 for 60c.**
- 88-88 **LENT A. WILLIAMSON** (Williamson, 1918). S. very broad, campanula-violet; F. broad and drooping, velvety violet-purple; beard yellow. Large flowers on stout stems. Vigorous grower. 42 inches. **15c each; 2 for 25c.**
- 88-78 **LEONATO** (Hort., 1922). S. pale lavender passing to silvery heliotrope; F. slightly darker, widely expanded, 2½ inches across at the haft with dark reticulations on a white ground. Very fragrant and exceedingly large. 48 inches. **50c each.**
- LEOTA** (Fryer). A creamy white, fading to pure white, tall and early. Vigorous grower and profuse bloomer. **25c each; 3 for 60c.**
- 76-79 **LOHENGRIN** (Goos & Koenemann, 1909). S. and F. soft mauve, shading nearly to white. 30 inches. **15c each; 2 for 25c.**
- 88-78 **LORD OF JUNE** (Yeld, 1911). S. pale lavender-violet. Strong, vigorous grower, fragrant. A large, free flowering Iris universally admired. **25c each; 3 for 60c.**
- 73-78 **LORELEY** (Goos & Koenemann, 1910). S. canary-yellow; F. ultra-marine-blue, bordered cream. 30 inches. Very free blooming, early and extending over a long period. **15c each; 2 for 25c.**
- LOS ANGELES** (Mohr-Mitchell, 1927). Giant white flowers of fine shape and great substance; The standards faintly edged pale blue. 42 inches. **\$2.50 each.**
- LOUDOUN** (Fendall, 1924). 36 inches. An exquisite variety. S. soft amber-yellow. F. white, flushed amber. **50c each.**
- 69-70 **MADAME CHEREAU** (Lemon, 1911). White frilled with wide border of clear blue. 36 inches. An old favorite. **15c each; 2 for 25c.**
- 81-80 **MADAME CHOBOUT** (Denis, 1916). S. white, shot with pale chalcedony-yellow, shading to wine-red. F. white edged with lilac, a most pleasing contrast of colors. 36 inches. **25c each; 3 for 60c.**
- 92-89 **MME. DURRAND** (Denis, 1912). S. cinnamon-buff, flecked lilac; F. flushed with lilac on a ground of old gold shading to amber at the throat. Stalks widely branched. 60 inches. **75c each.**
- 86-85 **MME. HENRI CAYEAUX** (Cayeux, 1924). 42 inches. Very large flowers with standards of reddish violet-purple and falls of dark velvety purple with lighter edges. A handsome variety of the Ambassadeur type. **50c each.**
- 78-80 **MA MIE** (Cayeux, 1906). S. and F. clear white, frilled violet-blue. Best of the Mme. Chereau type. **25c each; 3 for 60c.**
- 87-85 **MAGNIFICA** (Vilmorin, 1920). 42 inches. One of the finest Irises in cultivation, perfect form, large flower, delicious fragrance and rich color. It is a brilliant crimson toned bicolor. **25c each.**

79-79 **MAGNIFICENT** (Fryer, 1923). S. ampero-purple; F. Rood's violet. Reticulated brown and yellow at base. Conspicuous orange beard. F. very large and long. 30 inches. **50c each.**

88-87 **MAJESTIC** (Bliss, 1923). One of the best dominion seedlings. S. circular and arching, nearly 3 inches broad, light lavender and mauve, stained light bronze at the base. F. straight, hanging smooth and flat, 2½ inches broad, rich velvety raisin-purple. **35c each.**

88-90 **MARY BARNETT** (Cumbler, 1926). A fine new Iris described as a larger Princess Beatrice with a glorious golden beard whose reflection pervades the whole bloom. Free flowering and very vigorous. **50c ea.**



Iris drive through one of our big fields

"More for Your Money"

- 72-72 **MARY GARDEN** (Farr, 1913). S pale yellow, flushed pale lavender; F. cream ground, minutely dotted and striped with lavender, violet and maroon. A unique flower that should be in every collection. **15c each; 2 for 25c.**
- 84-85 **MARY GIBSON** (Perry, 1923) S. light rose suffused buff; F. deeper rose, slightly suffused violet and buffed with bronze markings on a cream base. Orange beard. Very pleasing color; an excellent bloomer of good substance, on tall stems. 42 inches. **25c each; 3 for 60c.**
- 81-81 **MARY ORTH** (Farr, 1920). S. light violet-blue; F. dark violet-blue. One of the best of the Farr Irises. 18 to 24 inches. **25c each; 3 for 60c.**
- 84-87 **MEDRANO** (Vilmorin, 1920). S. reddish copper with suggestions of violet; F. dark crimson-purple. Late 30 inches. A beautiful dark variety. **25c each; 3 for 60c.**
- 88-84 **MLE. SCHWARTZ** (Denis, 1916). A tall mauve self color, large, free flowering, flower 48 inches high. **25c each; 3 for 60c.**
- 81-80 **MIDWEST** (Sass, 1923). A fine ruffled plicate of large size and pleasing form. S. flushed and dotted Matthews purple. Vigorous plant with stalks well branched. 30 inches. **25c each; 3 for 60c.**
- 86-87 **MILDRED PRESBY** (Farr, 1923). S. white; F. rich velvety pansy-violet with narrow edge of lavender. White-yellow beard. Considered by many the best Iris originated by the late Mr. Farr. 30 inches. **35c each; 3 for 90c.**
- 74-74 **MITHRAS** (Goos & Koenemann, 1910) S light yellow; F. brilliant wine-red with a narrow border of deep yellow. **15c each; 2 for 25c.**
- 90-97 **MOA** (Bliss, 1919). Enormous flowers with pure violet arching standards and broad falls of a deep velvety pansy-violet. It is the tallest of the dominion race. Very free flowering with individual flowers of great substance. A magnificent Iris. **\$1.00 each.**
- 85-84 **MOONLIGHT** (Dykes, 1923). A giant silvery white flower, as large as the giant flowered varieties in other colors. Throat beautifully marked greenish gold with a striking yellow beard. Very fragrant. **50c each; 3 for \$1.25.**
- 91-91 **MORNING SPLENDOR** (Shull, 1923). S. petunia-violet; F. rich raisin-purple. An excellent flower, large, of rich color and good substance. One of the best of all the American introductions. 48 inches. **25c each; 3 for 60c.**
- 74-77 **MONSIGNOR** (Vilmorin, 1907). S. richest satiny violet; F. deep purple-crimson. One of the popular standard varieties. Late. 28 inches. **15c each; 2 for 25c.**
- MOTHER MACHREE** (Moore, 1927). The color is changeable gray and blue. Yellow beard and markings in the throat. Stamens cream, faint lavender midrib. Mother Machree is more beautiful, more delicate in coloring and more worthy of the name than Quaker Lady. Large flowers, late midseason. Red spathes. Wonderful cut flower, appearing more beautiful when brought indoors. Height 3 feet. Hardy. **25c each; 3 for 60c.**
- MOTHER OF PEARL (Special)**. A beautiful Iris. Very popular with everyone. This Iris is undoubtedly one of the world's best. It is a vigorous grower, prolific bloomer and of a wonderful substance and beauty. It is almost impossible to describe its rare beauty and it should be seen to be appreciated. It was originated by Miss Sturtevant in 1921. The S. and F. are pale blue-lavender with a faint creamy undertone. Large flowers of perfect form and exceptional substance that have a distinct luster of iridescence, or pearly effect, from which the flower is so aptly named. Special price this year. **25c each; 3 for 60c.**
- MRS. A. K. LODGE**. Standards and falls, lavender pink. **25c each; 3 for 60c.**
- 71-74 **MRS. ALAN GRAY** (Forster, 1909). General color effect pinkish lilac. Fine for massing. **15c each; 2 for 25c.**
- MRS. CUTHBERTSON** (Perry). A rosy purple, apricot, grayish combination, large and tall. Similar, but bluer toned than Lord Lambourne by Perry. **25c each; 3 for 60c.**
- MRS. EDWARD HARDING** (Perry, 1925). 48 inches. Large, well formed flowers with standards of violet-purple and falls of dark velvet violet-purple overlaid black, bronze-yellow beard. A tall, beautiful Pallida variety. **\$1.50 each.**



Queen Caterina

- 63-70 **MRS. H. DARWIN** (Foster, 1903). S. snow-white, slightly reticulated violet at the base. 24 inches. **15c each; 2 for 25c.**
- 80-83 **MRS. H. F. BOWLES** (Perry, 1923). S. smoky tan; F. red-mahogany-brown reticulated at the base. A good, medium sized bloomer. Mid-season. 36 inches. **25c each; 3 for 60c.**
- 61-78 **MRS. S. H. SMITH** S. rich yellow; F. same color, shaded light yellow in center. **15c each; 2 for 25c.**
- 92-91 **MRS. VALERIE WEST** (Bliss, 1925). 36 inches. The large standards are lavender shot with bronze and the falls deep, rich velvety red-purple. The flowers are very large and finely held on a strong stem. This is one of the strongest growing and most vigorous of the dominion seedlings. **\$4.00 each.**
- 69-77 **MRS. W. E. FRYER** (Fryer, 1917). S. shaded heliotrope; F. purple-crimson, bordered a lighter shade. 32 inches. **40c each; 3 for \$1.00.**
- NELLIE GRAY** (Moore, 1927) Tall, lavender. Very graceful, free bloomer. Really about the best of the color. Darker than Celeste. **75c each; 3 for \$2.00.**
- 70-65 **NIBELUNGEN** (Goos & Koenemann, 1910). S. fawn-yellow; F. bluish violet. 30 inches. Free flowering. **15c each; 2 for 25c.**
- 83-82 **OCHRACEA** (Denis, 1919). This flower has been sold under the name of Sunset and Ochracea Caerulea, but is recognized by the American Iris Society as Ochracea. S. yellowish buff of real old gold, finely arched and of great substance; F. coppery yellow heavily suffused blue-violet in the center of the segments and reticulated and dotted brown at the haft with a prominent yellow beard. A flower of wonderful color, strong growing, free-flowering, sweetly scented and late. 30 inches. **25c each.**
- OLD GOLD** (Sass, 1929). A flower of fine form and substance of a distinctive old gold blend; standards ruffled, late. **50c each.**

Charles A. Pfeiffer's "GOODTIMES" Catalog

- 82-83 **OPERA** (Vilmorin, 1916). S. bright, rich pansy-violet, shading to brownish violet at base; F. a rich velvety violet-purple. 30 inches. A very striking medium sized Iris with flowers of magnificent color. **25c each; 3 for 60c.**
- 82-84 **PALEMOM** (Perry). S. very light buff tinted lilac; F. buff suffused deep lilac-purple. The flower lights up at the center like Afterglow. An early bloomer of medium size. 36 inches. **35c each.**
- 77-80 **PARC DE NEUILLY** (Verdier, 1910). Rich violet with orange beard. Extremely large and very beautiful flower. 30 inches. **15c each; 2 for 25c.**
- PARISIENSIS.** Large, showy, deep purple, delicately penciled white. One of the earliest. 24 inches. **15c each; 2 for 25c.**
- 78-82 **PEAU ROUGE** (Cayeaux, 1923). S. coppery red; F. bronze-blood red; beard brownish yellow. Probably the reddest Iris yet introduced. 24 inches. **25c each.**
- 91-89 **PEERLESS** (Dykes, 1924). 38 inches. A magnificent mahogany-red flower of perfect form and very large. A brilliant rich gold beard lights up the whole flower. It takes a plant of two years growth to give characteristic bloom because the stems are so tall and thick and the flowers so large and of great substance. **\$1.50 each.**
- 69-79 **PERFECTION** (Barr, 1916). S. light lavender-blue flaked with deeper blue; F. brilliant deep violet-purple with an orange-yellow beard. 30 inches. **15c each; 2 for 25c.**
- 89-90 **PIONEER** (Bliss, 1924). A beautiful red-purple, nearly a self. S. large and incurved, color bright ampero-purple. F. very broad and strong, deep pansy purple set off by a bright orange beard. One of Bliss' best varieties. **35c each.**
- 86-84 **PRAIRIE GOLD** (Sass, 1926). Very fine flower of uniform deep rich yellow coloring. Fine for landscape effect. 24 inches. Late. **35c each.**
- 88-88 **PRIMROSE** (Sturtevant, 1923). S. amber-yellow; F. lighter barium-yellow. 30 inches. **35c each; 3 for 90c.**



Lord of June in our Winona fields.
Note—Mississippi Valley hills in background.

- 73-81 **PRINCE LOHENGRIN** (Mohr, 1923). This new seedling, a cross between Juniata and Lohengrin, is introduced as an improved Lohengrin. It grows nearly a foot taller, is slightly pinker in color and has a better arrangement of the flower. **25c each.**
- 81-80 **PRINCESS OSRA** (Bliss, 1922). A very beautiful white variety dotted with lavender on both S. and F. The prettiest of the new plicates. **25c each.**
- 90-90 **PRINCESS BEATRICE** (Barr). 40 inches. A soft lustrous lavender. A large flower of perfect shape. Unsurpassed in its color. **25c each.**
- 74-74 **PRINCESS VICTORIA LOUISE** (Goos & Koene-mann, 1910). S. sulphur-yellow; F. rich plum bordered cream. 30 inches. An early, free-flowering variety of strong and vigorous growth. **15c each; 2 for 25c.**
- 83-84 **PROSPER LAUGIER** (Verdier, 1914). S. light bronze-red; F. velvety ruby-purple, orange beard. 30 inches. One of the best of the bronze varieties. **15c each; 2 for 25c.**
- 81-82 **PROSPERO** (Yeld, 1920). S. pale lavender flushed yellow around the base; F. deep red-purple. Vigorous, tall variety bearing enormous flowers of fine shape. 48 inches. **25c each; 3 for 60c.**
- 95-95 **PRUISSIMA** (Mohr-Mitchell, 1927). A pure white Iris of great size, fine form and substance. Its vigor and tall, well branched stems make it one of the finest white Irises in commerce. Needs extra winter protection in the colder states of the North. **\$2.00 each.**
- 72-75 **QUAKER LADY** (Farr, 1909). S. smoky lavender with yellow shading; F. soft lavender and old gold. A very attractive medium sized variety. 36 inches. **15c each; 2 for 25c.**
- QUEEN ALEXANDRA** (Farr, 1910). S. purplish lilac; F. lilac reticulated bronze at the base. 22 inches. **15c each; 2 for 25c.**
- 88-88 **QUEEN CATERINA** (Sturtevant, 1917). Large, iridescent, pale lavender with yellow beard. 42 inches. An excellent variety. **25c each; 3 for 60c.**
- 76-76 **QUEEN EMMA.** White. **15c each; 2 for 25c.**
- 71-74 **QUEEN OF MAY** (Salter, 1859). S. and F. purplish lilac or rose. Vigorous grower and free bloomer. Good for mass effect. 32 inches. **15c each; 2 for 25c.**
- RAMONA** (Mohr, 1924). A new plant of striking colors, petunia violet, flushed cinnamon-brown, lightened up by an orange beard; fine form and substance and vigorous in growth. **25c each; 3 for 60c.**
- 74-74 **RAFFET** (Vilmorin, 1920). S. Bradley's violet; F. dark, with violet veinings; stalks low and well branched. Very late. **25c each; 3 for 60c.**
- RED WING** (Sass, 1928). 36 inches. A gigantic flower. General color effect is bronzy red. The flower is of perfect shape and is carried on tall stiff stems. A great acquisition. **\$2.00 each.**
- 62-83 **RHEIN NIXE** (Goos & Koenemann, 1910). S. pure white; F. deep blue with white edge. 36 inches. The finest of the older varieties. **15c each; 2 for 25c.**
- RODNEY** (Bliss, 1919). S. and F. self violet-blue. Free bloomer. 40 inches. **25c each; 3 for 60c.**
- 68-71 **ROSE SALTERN** (Bliss). A plicata, snow-white; S. and F. penciled a bright blue; more profuse flowering than Ma Mie or Mme. Chereau. Late. **25c each; 3 for 60c.**
- 87-89 **ROMOLA** (Bliss, 1924). One of the very best of the dominion seedlings, the blooms are very large, gracefully formed and delicately toned. S. pale lilac tinged pale ivory-yellow at the base; F. velvety red-violet. A free flower, strong grower, with well branched spikes. About 42 inches. **\$1.00 each.**
- 63-69 **ROSE UNIQUE** (Farr, 1910). S. and F. bright rose. The nearest approach to a pink Iris. Very early. **15c each; 2 for 25c.**
- 74-78 **ROSEWAY** (Bliss, 1919). S. purple; F. duller shade; orange beard. One of the brightest red Pallidas. 36 inches. **25c each; 3 for 60c.**
- R. W. WALLACE** (Perry, 1923). 42 inches. A beautiful rich deep purple Iris. Taller and darker colored than Germaine Perthuis. Strong and vigorous. A magnificent Pallida. **50c each.**
- 77-78 **SALONIQUE** (Cayeaux). S. cream, shading to buff at base; F. very rich red-purple with some white and brown lines at the base; splendid shape, good quality; yellow beard. 36 inches. **25c each; 3 for 60c.**
- 85-84 **SAN GABRIEL** (Dean, 1921). S. lavender-violet, arched. F. widely flaring, darker in color, finely reticulated brown at the haft; well branched. 48 inches. **50c each.**

"More for Your Money"

83-83 SEMINOLE (Farr, 1920). A rich dark violet-rose, the falls a little deeper than the standards. In the same color range as Opera, but is taller and a closer approach to red. One of the brightest of the so-called reds for landscape use. It is a free bloomer with a bright orange beard. Makes a splendid mass effect. **25c each; 3 for 60c.**

SENSATION (Cayaux, 1925). Flowers of immense size, perfect in form and of exceptionally strong texture. A self color of clear corn flower blue. The Falls are horizontal and stand out clearly. 48 in. **\$2.50 each.**

84-84 SHEKINAH (Sturtevant, 1918). S. and F. pale lemon-yellow. The first clear yellow of good size and height. Strong grower. 36 inches. **15c each; 2 for 25c.**

77-76 SHERWIN WRIGHT (Kohankie, 1915). Vigorous and free flowering. Bright golden yellow. **15c each; 2 for 25c.**

85-84 SIMONE VAISSIERE (Millet, 1921). S. white shaded azure; F. brilliant aniline-blue; throat veined golden and maroon on white base. Very beautiful. 30 inches. **35c each; 3 for 90c.**

SIR MICHAEL (Yeld, 1925). S. clear iridescent lavender blue, F. deep rich purple, suffused red brown. The flowers are large and massive with a remarkable rich blending of colors in the velvety falls. 48 inches. **\$4.00 each.**

85-87 SNOW WHITE (Sturtevant, 1926) 36 inches. A handsome new white Iris with pale green markings, of good form, size and substance. It is larger and much taller than White Knight, which is making it a very popular white Iris. It is very floriferous and a strong, vigorous grower. **75c each; 3 for \$2.00**

92-90 SOUVENIR DE LOETITIA MICHAUD (Millet, 1923). 48 inches. Standards and falls of lobelia-blue with golden yellow veins on a white ground at the haft. Enormous blooms of perfect shape and substance on tall, well branched stalks. It is perfectly hardy, a strong grower and a free bloomer. Worthy of its high rating. **75c each; 3 for \$2.00.**

91-88 SOUVENIR DE MADAME GAUDICHAU (Millet, 1914). S. violet; F. velvety purple. 42 inches. One of the most striking Irises. Early. **25c each; 3 for 60c.**

85-86 SUSAN BLISS (Bliss, 1922). Uniform shade of deep rose-pink; the beard a light orange, very free blooming and of a robust constitution. One of the best pink varieties. 42 inches. **25c each; 3 for 60c.**

89-84 SWAZI (Bliss, 1922). A dominion seedling. S. bluish violet; F. velvety blackish violet. Magnificent flower and a vigorous plant. 36 inches. Stock limited. **\$1.00 each.**

85-87 SWEET LAVENDER (Bliss). S. splendid pale lavender; F. broad, horizontal and a deeper rose-lavender than S. Medium. 30 inches. **25c each; 3 for 60c.**

82-81 TAJ MAHAL (Sturtevant, 1921). Fine white. 36 inches. One of the satisfactory whites. **25c each; 3 for 60c.**

88-88 TENEBRAE (Bliss, 1922). A dependable free flowering, dominion seedling of a rich dark color. S. rich violet-purple, tinged dark maroon-purple rich violet-purple, tinged dark maroon-purple at the center; F. rich velvety blackish purple. 36 inches. **25c each; 3 for 60c.**

THE PEACOCK (Thomas). formerly Unicolored blue shaded with peacock shades of green and some yellow casts. Wonderful luster sheen in the sun. Vigorous grower. **50c each.**



A little corner out of one of our two year Iris fields.

THE SORCERER (Dr. Floore). Very much like Mme. Gaudichau but a bit larger and with a little more luster. **\$1.00 each.**

84-82 TROADES (Perry). S. dull rose color; F. bright rose-crimson. Tall; splendid branched stems. **25c each; 3 for 60c.**

85-85 TROPIC SEAS (Shull, 1924). 48 inches. A beautiful deep blue-purple Iris with the falls showing a tinge of mulberry. Tall, vigorous grower. **25c each.**

85-86 VALENCIA (Mohr-Mitchell, 1926). 30 inches. A beautiful bright orange-buff self color. Flowers of good form and substance. Very hardy and prolific. **50c each; 3 for \$1.25.**

79-82 VALERY MAYET (Denis, 1912). S. coppery rose; F. deep red-brown, unusual color combination. **25c each; 3 for 60c.**

89-89 VESPER GOLD (Williamson, 1927). A new distinct yellow with soft violet flush and gold and maroon veinings on the falls. 30 inches. Late. **50c each.**

VOCTORINE (Lemoine, 1840). White with pansy-violet falls. **25c each; 3 for 60c.**

73-76 VIOLACEA GRANDIFLORA. A massive rich blue; vigorous; free blooming. **15c each; 2 for 25c.**

87-87 WEDGEWOOD (Dykes, 1923). A rich, true blue self. Both S. and F. are a uniform color of Wedgewood blue shading to white at the base of the segments with a white beard. Probably the best blue Iris. 42 inches. **35c each; 3 for 90c.**

71-72 W. F. CHRISTMAN (Fryer). S. white, tinged violet; F. purple with light border. Fragrant. 22 inches. **15c each; 2 for 25c.**

79-80 WHITE KNIGHT (Saunders, 1916). Beautiful snow-white without markings of any kind. Considered one of the best whites. **25c each; 3 for 60c.**

WHITE QUEEN (Geylenkek). Syn., Queen Mary. A small, white flower, with throat and beard greenish white. A prolific bloomer, several days earlier than White Knight. 30 inches. **25c each.**

80-80 WILD ROSE (Sturtevant, 1921). 33 inches. A dainty pale wild-rose-pink with white beards. Smooth, satiny texture. If you like pink Iris you will surely like this variety. **25c each; 3 for 60c.**

WM. MOHR (Mohr, 1925). 32 inches. This is a remarkable Iris. The ground color is pale lilac, standards are flushed darker, the whole flower is beautifully veined manganese violet. The flower has great substance, reported quite hardy, but we advise covering lightly for safety. **\$1.00 each.**

85-85 YELLOW MOON (Sturtevant). A light creamy yellow pallet of satiny smooth texture and fine form. A fine garden suggestion. Medium. **25c each; 3 for 60c.**



Just another field of Pfeiffer Iris taken one year after planting.

- 87-82 **YOLANDE** (Millet, 1923). 40 inches. Enormous dark velvety blue flowers of beautiful form and great substance. A strong, hardy grower and one of the most floriferous Iris we know. Especially good for landscape planting. **35c each.**
- 70-75 **ZANARDELLI**. S. and F. clear, beautiful blue. 28 inches. **15c each; 2 for 25c.**
- 79-74 **ZUA** (Crawford, 1914). Dwarf. Very fragrant, crinkled and ruffled. Large flower of unique pearl-gray coloring. **25c each; 3 for 60c.**
- ZWANENBURG** (Denis, 1909). S. cream, striped maroon; F. dark olive-brown, flaked violet. Large flower of exquisite coloring. **15c each; 2 for 25c.**

Dwarf and Intermediate Varieties

- ATROVIOLACEA**. 5 inches. Earliest of all to bloom. Standards reddish purple, falls a trifle darker. **15c each; 2 for 25c; \$1.00 per doz.**
- AZUREA**. 5 inches. Very fine clear blue. **25c each; 3 for 60c; \$1.50 per doz.**
- COERULEA**. 5 to 6 inches. A lovely sky blue. Very early. **25c each; 3 for 60c; \$1.50 per doz.**
- CYANEA**. Dark purple. **10c each; 3 for 25c; 75c per doz.**
- DWARF FAIRY**. White splashed violet. **15c each; 2 for 25c; \$1.00 per doz.**
- FLORIDA**. 8 inches. Soft yellow standards and falls, very fragrant. **25c each; 3 for 60c; \$1.50 per dozen.**
- MOROCAIN**. 8 to 10 inches. Darkest of all the Dwarfs. Rich velvety dark purple. Profuse bloomer. **25c each; 3 for 60c.**
- ORANGE QUEEN**. 6 to 8 inches. Clear deep yellow. **25c each; 3 for 60c; \$1.50 per dozen.**
- SCHNEE KUPPE**. 8 to 10 inches. Fine dwarf white. **25c each; 3 for 60c; \$1.50 per doz.**
- HELGE**. Lemon-yellow. **15c each; 2 for 25c; \$1.00 per doz.**
- WALHALLA**. Blue and purple. **15c each; 2 for 25c; \$1.00 per doz.**

Siberian and Beardless Iris

- ORIENTALIS**. Blue purple. **15c each; 2 for 25c; \$1.00 doz.**
- SIBIRICA BLUE**. Blue and white. **15c each; 2 for 25c; \$1.00 doz.**
- SNOW QUEEN**. White. **25c each; 3 for 60c; \$1.50 doz.**
- SUPERBA**. Purple. **25c each; 3 for 60c; \$1.50 doz.**
- EMPEROR**. Fine, tall, dark blue. **50c each; 3 for \$1.25.**
- PERRY'S BLUE**. Fine, tall, sky-blue. **25c each; 3 for 60c; \$1.50 doz.**
- DOROTHY K. WILLIAMSON**. Vivid purple. **25c each; 3 for 60c; \$1.50 doz.**
- SHELFORD GIANT**. Canary-yellow. **\$1.00 each.**

Iris Originated by Ourselves

- KATHARINE E. LEES**. White and delicate lavender, standards ruffled; fragrant; tall **25c each; 3 for 60c; \$1.50 doz.**
- RUTH PFEIFFER**. Color somewhat similar to above, different form and a few days later, larger bloom, tall and fragrant. Praised by Mr. F. X. Schreiner in his 1929 Iris book as "one of the finest of its kind". **25c each; 3 for 60c; \$1.50 doz.**
- FORTUNA**. Reddish purple. **25c each; 3 for 60c; \$1.50 doz.**
- LILIAN ROSE**. Dainty pink. **25c each; 3 for 60c; \$1.50 doz.**
- LOIS**. Light blue. **15c each; 2 for 25c; \$1.00 doz.**
- SYLVIA LUCAS**. Blue and purple. **25c each; 3 for 60c; \$1.50 doz.**
- PROFUSION**. White, tinged lavender; a profuse bloomer. **15c each; 2 for 25c; \$1.00 doz.**
- E. W. ROENING**. Fawn and heliotrope. **25c each; 3 for 60c; \$1.50 doz.**
- DR. HIDERSHIDE**. Dark blue, heavily branched. **25c each; 3 for 60c; \$1.50 doz.**
- F. B. SCHERMERHORN**. Lavender-blue self. **25c each; 3 for 60c; \$1.50 doz.**
- IMPROVED KING**. Golden yellow and mahogany. **25c each; 3 for 60c; \$1.50 doz.**
- DONALD MAXSON**. Heliotrope and wine. **15c each; 2 for 25c; \$1.00 doz.**
- W. H. ELLER**. Tall lavender. **15c each; 2 for 25c; \$1.00 doz.**
- HELEN FRANCES**. Tall lavender. **25c each; 3 for 60c; \$1.50 doz.**
- MISS GEORGIANA**. Purple and lilac. **15c each; 2 for 25c; \$1.00 doz.**
- EMMA BEAL**. Dark blue. **25c each; 3 for 60c; \$1.50 doz.**
- BELSHAZZAR**. S. dusky fawn; F. purple. **40c each; 3 for \$1.00.**
- INDIAN MAID**. S. clouded lavender; F. dark reddish maroon. **15c each; 2 for 25c; \$1.00 doz.**
- EDITH SCOVILLE** (Pfeiffer, 1928). Self color. S. and F. a rich uniform purple-wine color; bright orange beard. 28 inches. **25c each; 3 for 60c; \$1.50 each.**
- GRACE CAMERON** (Pfeiffer, 1929). S. and F. beautiful uniform shade of dark lavender; F. slightly reticulated violet at the base; S. incurved and ruffled. Stout, erect stem. 24 inches. Beard yellow tipped white. Pleasing fragrance. **50c each; 3 for \$1.00; \$3.00 doz.**
- HILTON LUCAS** (Pfeiffer, 1929). S. a delicate shade of tinted lavender, incurved and ruffled. F. a rich pansy-violet edged with a lighter border. Prominent yellow beard. Tall, well branched stem. 30 inches. Delightfully fragrant. A real beauty. **75c each.**
- PRINCESS WENONAH** (Pfeiffer, 1929). S. and F. beautiful uniform shade of light lavender, similar in color to Caroline Stringer. Quite prominent yellow beard. Extra strong, heavy, well branched. 30 inches. **50c each; 3 for \$1.00; \$3.00 doz.**
- FLORENCE IRENE**. A beautiful new blended rose-pink. S. incurved soft pink. F. rather horizontal, a deeper shade of rose-pink. Flower of good size and substance. Tall, stately spike. Very fine. **50c each; 3 for \$1.00; \$3.00 doz.**

"More for Your Money"

IRIS BARGAIN OFFERS



SURPRISE No. 1
Collection

We usually have a surplus of many different varieties of Iris, and for those who just want a big array of color and do not care for the names, we make up this Collection of unnamed varieties. We guarantee you at least \$4.00 worth of plants at the regular list price.

25 VARIETIES UNLABELED
All Different
ONLY \$1.00 POSTPAID



IRIS COL. No. 2

In this Collection we have made up as wide a range of color as is possible with sixteen varieties. With our greatly reduced prices this will become our most popular Collection. Needless to say, with Pfeiffer Quality considered, you will have to look a long time to find an Iris bargain that will equal this one. All properly labeled.

Ambassadeur	Flammenschwert
Mother of Pearl	Amber
Queen Caterina	Dream
Lord of June	Madame Chobaut
Mrs. Cuthbertson	Mlle. Schwartz
Sweet Lavender	Salonique
White Knight	Seminole
Dejah	Troades

16 Varieties, low list price \$4
POSTPAID for Only **\$2**

IRIS COL. No. 3

SUPER QUALITY EXTRA HIGH CLASS
The varieties used in this Collection are, regardless of price, amongst the worlds best Iris. If you want the very finest Iris, you can have them at these new reduced prices. Many of them cost more apiece two years ago than we are asking now for the entire Collection. All properly labeled.

Cardinal	\$1.00
Coronation	1.00
Dolly Madison	1.00
Elsinore	1.00
Mrs. Edward Harding	1.50
Mrs. Valerie West	4.00
Peerless	1.50
Romola	1.00
Swazi	1.00
Bruno50
Conchobar50
Germaine Perthuis75

\$14.75

New low retail value \$14.75
NOW ONLY, Postpaid . . . **\$10**



Prize Winning Iris

Iris Col. No. 4
Dwarf and Intermediate
1 each of eleven varieties listed under this heading on page 20
\$2.45 VALUE FOR ONLY \$2.00 POSTPAID

Iris Col. No. 5
Siberian and Beardless
1 each of the eight varieties listed as Siberian and Beardless, on page 20 including Shelford Giant
\$2.80 VALUE FOR ONLY \$2.50 POSTPAID

Iris Col. No. 6
Iris Originated by Ourselves
1 each of 23 varieties listed on page 20
\$6.55 VALUE FOR ONLY \$4.00 POSTPAID



At the Minneapolis Iris Show held June 2nd and 3rd, 1932, Pfeiffer's Iris won 21 prizes, the Sweepstakes for the most prize points scored and the silver loving cup for the most comprehensive display. All this after packing and carrying the flowers 143 miles in a car which speaks volumes for the prize winning qualities of our stock.

Hardy Perennial Flowers

Achillea - Milfoil

Achilleas are of easy culture and grow in any good garden soil, preferring sunny locations. They are useful for the border and for cutting.

BOULE DE NEIGE (Ball of Snow). Small, white flowers, wonderful for cutting to fill in with other flowers. Blooms in June. **20c each; \$2.00 per doz.**

THE PEARL. Pure white flowers borne in the greatest profusion on strong, erect stems. 2 feet high. **20c each; \$2.00 per doz.**

Artemisia

SILVER KING. A plant of rare beauty and charm for landscaping or cutting. For landscape effect from early summer until late fall Artemisia Silver King is a most outstanding plant. It thrives in ordinary soil, growing to a height of about 3 feet in almost perfect symmetrical form. The stems are well branched and thickly covered with bright silver colored foliage, but these quickly divide into a delicate lacy shape with the appearance of small flower buds all over the branches. **25c each; 3 for 60c; \$2.50 per doz.**

Astilbe - Spirea

JAPONICA. This is one of the few attractive perennials that thrive either in moderate shade or in the open. Perfectly hardy. Large, plummy heads of creamy white or pink; flowers in June or July. 3 to 4 feet. **Either variety, 30c each; \$3.00 per doz.**

Boltonia

ASTEROIDES. Grows to 6 or 7 feet in height and produces an amazing number of small, daisy-like, white flowers in late fall. Fine for cutting in combination with Delphinium. **20c each; \$2.00 per doz.**

LATISQUAMA. Slightly more upright in growth than Asteroides, with larger flowers of lavender-pink. **Each 20c; \$2.00 per doz.**

Coreopsis

LANCEOLATA GRANDIFLORA. A beautiful hardy border plant, grows 18 to 24 in. high and produces its bright yellow flowers in great profusion. By cutting off old flowers, will bloom until fall. **20c each; \$2.00 per doz.**

Clematis Recta

CLEMATIS RECTA. A shrubby clematis, growing about 3 feet in height. Blooms early in June. Covered with panicles of creamy white flowers that are fine to mix in bouquets. **50c each.**

Dictamnus - Gas Plant

The Dictamnus is one of the most satisfactory hardy plants in cultivation, both on account of splendid flowers and its rich, durable foliage. **50c each.**

Dicentra - Bleeding Heart

SPECTABILIS. An old-fashioned favorite. Its long racemes of graceful, heart-shaped, pink flowers are always attractive. Flowers in May. 18 to 30 inches. **Heavy roots, 50c each.**

Daisy

In the garden they are classed among the most known hardy plants. All varieties are fine for cut flowers.

ALASKA (Shasta Daisy). Large, pure white flowers, yellow center. **20c each; \$2.00 per doz.**

MEMORIAL DAISY (Leucanthemum). A very hardy and early flowering Daisy. Flowers not so large as Alaska or Shasta, but its extreme earliness (usually before Memorial Day), makes it a desirable variety. **20c each; \$2.00 per doz.**

PAINTED DAISY (Pyrethrum roseum hybridum). Very hardy and one of the choicest of the perennials. The fernlike foliage is attractive when the plants are not in bloom, and the flowers range from white, through shades of pink to deep cerise. Fine for cut flowers in May and June. **20c each; \$2.00 per doz.**

Delphinium - Perennial Larkspur

Indispensable to the herbaceous garden. Their long, showy spikes of flowers bloom from June until frost in the fall; and furnish the most satisfactory blues to any color scheme.

BELLADONNA. The most continuous blooming of the Delphiniums. Color is a clear turquoise-blue. Very beautiful and fine for cutting. **2-yr. clumps, 20c each; \$2.00 per doz.**

BELLAMOSUM. The dark blue form of the popular Belladonna. **2-yr. clumps, 20c each; \$2.00 per doz.**

CHINESE BLUE. A very pretty variety with fine, feathery foliage and intense gentian-blue flowers in open panicles. **1-yr. clumps, 20c each; \$2.00 per doz.**

CHINESE WHITE. A pure white form of the above. **1-yr. clumps, 20c each; \$2.00 per doz.**

GOLD MEDAL HYBRIDS. These are in all shades of blue and purple. Mixed colors only. **25c each; \$2.50 per doz.**

WREXHAM HYBRIDS. An extra fine strain of large flowering Delphiniums. Mixed colors only. **2-yr. clumps, 50c each; \$5.00 per doz.**

GAILLARDIA (Blanket flower). Flowers in different combinations of yellow, orange and maroon red. Blooms all summer. Fine for cutting. **Each 20c; 3 for 50c.**



Memorial Daisy

"More for Your Money"

Gypsophila - Baby's Breath

Invaluable for cutting to fill in with bouquets. Also fine for filling in bare places in the border. The plant forms a dense, spreading bush, covered with tiny, white flowers. **Roots, 25c each; \$2.50 per doz.**

BRISTOL FAIRY. A double Gypsophila of great vigor producing large panicles of flowers, and blooming more or less continuously all summer if the early bloom is cut. **2 year roots, \$1.00 each.**

EHRLEI. New. Flowers pure white, almost as large as Achilleas, a fine filler for all kinds of bouquets and floral pieces. **2 year roots, \$1.00 each.**

Hemerocallis - Yellow Day Lily

Well known family resembling lilies in character and bloom, usually sweet scented, and bearing a great quantity of yellow flowers during long periods of summer. Very showy in the garden. 2 to 4 feet in height.

DR. REGEL. Handsome, rich orange-yellow. Flowers in May. Very fragrant; fine for cutting. $1\frac{1}{2}$ feet. **35c each; \$3.00 per doz.**

FLAVA (Lemon Lily). Sweet scented; clear full yellow. Flowers in June. $2\frac{1}{2}$ feet. **25c each; \$2.50 per doz.**

GOLD DUST. A lighter shade of yellow than Dr. Regel, and a few days later to bloom. 2 to $2\frac{1}{2}$ feet. **30c each; \$2.50 per doz.**

THUNBERGII. A tall growing late variety, blooms in July. Flowers are of large size and lemon yellow color. **35c each; \$3.00 per doz.**

Heuchera - Coralbells

ALBA. Delicate creamy white flowers on a 12 to 18 inch stem. Flowers in June. **20c each; \$2.00 per doz.**

ROSEA. Light rose-colored flowers on stems 16 to 24 inches. Very delicate and attractive. **50c each.**

Lily-of-the-Valley

A liberal top dressing of well-decayed manure will be well repaid in the size of bloom and length of stem of these sweetly scented flowers. **Clumps, 25c each; \$2.00 per doz.**

Lychnis - Campion

A fine old-fashioned flower bearing large heads of bright red flowers that are very striking. These combined with Achillea and blue Delphinium make an ideal patriotic bouquet on July 4th. Blooms early July. 2 to 4 feet. **20c each; \$2.00 per doz.**

Monarda or Bergamot - Oswego Tea

Showy plants growing from 2 to 3 feet high, with aromatic foliage and producing their bright flowers in July and August.

DIDYMA, CAMBRIDGE SCARLET. Brilliant crimson-scarlet. **20c each; \$2.00 per doz.**

DIDYMA ROSEA. Similar to above, but with rose-colored flowers. 3 feet. **20c each; \$2.00 per doz.**

Oriental Poppies

These Poppies are the regal representatives of the popular Papaver family.

ORIENTALE. Brilliant, showy scarlet; flowers in May and June. Very showy. Must be transplanted when dormant in August and September. **20c each; \$2.00 per doz.**

New Oriental Poppies

EDNA PERRY. Bright lovely pink. **\$1.00 each.**

LULU NEELEY. Considered the best red that Dr. Neeley has introduced. Beautiful deep dark red, an outstanding Poppy. **\$2.00 each.**

PROSPERPINE. Chinese red, decidedly black center. Very fine. **\$1.50 each.**

WURTEMBERGIA. Enormous cerise scarlet flowers often 10 inches in diameter, one of the most outstanding reds. **\$1.50 each.**



Hybrid Delphinium

Platycodon - Balloon Flower

Closely related to the Campanulas. Attractive, open, bell-shaped flowers, and buds that look like small balloons. Blue or white. **Each 20c; 3 for 50c; \$2.00 per doz.**

Pentstemon

GRANDIFLORUS. Wisconsin's most handsome and decorative wild flower. Easily grown in almost any soil. The flower spikes grow 2 to 3 feet tall, of dainty lavender-blue, and are unlike anything else in the garden. Blooms in May and June. Fine for cut flowers. Plant in an open sunny place. **Each, 25c; 3 for 65c; \$2.50 per doz.**

Ranunculus Yellow Buttercup

Well known, double yellow Buttercup. Effective either as a cut flower or grouped in hardy border, blooming in great abundance in May and June. 24 inches. **20c each; \$2.00 per doz.**

Spirea - Dropwort

FILIPENDULA. Numerous corymbs of white flowers, 15 to 24 inches high, in June and July. Pretty fernlike foliage. **25c each; \$2.50 per doz.**



A beautiful border of Hardy Phlox

HARDY PHLOX

	Each	Doz.
BRIDESMAID. White with a crimson eye.....	\$.20	\$2.00
DR. C. H. MAYO. White with red eye; tall.....	.30	3.00
ECLAIREUR. Brilliant carmine-rose.....	.20	2.00
ELIZABETH CAMPBELL. Light salmon-pink.....	.30	3.00
ENCHANTRESS. Rich salmon-pink.....	.30	3.00
FIREBRAND. Extra fine new red... ..	.30	3.00
FRAU ANTOINE BUCHNER. Large, pure white.....	.20	2.00
GEN. VON HEUTZ. Salmon-red; white and carmine eye.....	.20	2.00
GEORGE STROHLEIN. Orange-red.....	.20	2.00
INDEPENDENCE. White.....	.20	2.00
J. H. KAHLER. Extra fine pink... ..	.50	5.00
KOENIGSHOFER. Scarlet; extra large.....	.20	2.00
MILLY VON HOBOKEN. Light mauve-rose. Dark eye.....	.20	2.00
MISS LINGARD. Early white, lilac eye.....	.20	2.00
MRS. JENKINS. Pure white.....	.20	2.00
PANTHEON. Rose-pink.....	.20	2.00
PAUL DUTRIE. Lavender.....	.20	2.00
PRINCESS ELIZABETH. White with large crimson eye.....	.20	2.00
PROF. VIRCHOW. Bright carmine overlaid scarlet.....	.30	3.00
RHEINLANDER. Soft pink with deeper eye.....	.20	2.00
R. P. STRUTHERS. Bright rose-carmine.....	.20	2.00
RICHARD WALLACE. Pure white with crimson eye. Tall.....	.20	2.00
RISING SUN. Bright salmon-pink... ..	.20	2.00
RIVERTON JEWEL. Pink, with crimson-red eye.....	.20	2.00
RIJNSTROOM. Solid deep pink... ..	.20	2.00
SIEBOLD. Orange-scarlet.....	.20	2.00
THOR. Salmon-pink, red eye; tall... ..	.30	3.00
VON HOCHBERG. Bright crimson... ..	.20	2.00
WIDAR. Lavender-blue shading to white toward center.....	.20	2.00

Please note the excellent list of varieties we are offering this year. Not less than three plants of any variety at the dozen rate.

The Phlox is one of the foremost indispensable plants for the border. Not only in a group by itself is the Phlox effective, but intermingled with the other hardy perennials in the garden or border it lends beauty and color to the surrounding plants. There are so many places where a planting of brilliant colored Phlox would increase the beauty of the grounds that it is useless to mention them all. An experienced gardener will tell you that because of the dependability and long blooming period of the Phlox it is the very backbone of the perennial garden. It starts blooming in July and blooms profusely until late in September when the hard killing frosts stop it. The demand for Phlox increases every year, which proves that its popularity is spreading rapidly. Here at our nursery where the rows run right up to the highway, their brilliance seems to be an irresistible force that compels tourists to stop, admire them and place orders for them before they leave.

Phlox is less exacting than many of the perennials but does best in a rich, loamy soil in open sunlight. For best results about two feet apart and divide the clumps and transplant every two or three years. Colors vary from lily-white through all the pinks, reds, to dark purple.

We are especially proud of our Phlox offering this year due to the high quality of the roots and the wide selection of colors and varieties. Prices are extremely low considering the time it has taken to develop these plants. We suggest that you make selections early.

Not less than 3 of any variety will be sold at dozen rates.

Phlox Collection No. 1

One each of the following six varieties: Eclairer, carmine rose; Independence, white; R. P. Struthers, red; Rheinlander, soft pink; Siebold, orange scarlet; Thor, Salmon pink.

ALL SIX ONLY \$1.00 Postpaid

Phlox Collection No. 2

Fifteen Choice Phlox, 3 each of the following five varieties: Thor, salmon pink; Siebold; orange scarlet; Riverton Jewell, pink with red eye; Frau Anton Buchner, pure white; Eclairer, brilliant carmine rose.

ALL FIFTEEN ONLY \$2.00 Postpaid

Phlox Collection No. 3

One each of all twenty-nine varieties, each properly labeled.

Actual list price \$6.70

Postpaid for ONLY 5.50

Three each of all twenty-nine varieties

Postpaid for Only \$15.00

“More for Your Money”

Rock Garden Plants

This form of a flower garden is increasing in popularity by leaps and bounds.

It is not necessary to own a large estate to have a rockery or rock garden, as they can be built to fit the small home grounds as well, proper consideration being given to the location. The best site is on sloping ground where there is good drainage but with a little care can be built on the level or any place available. A sunny situation is best as most rock plants are sun loving. For complete details on how to plan and plant a rock garden send 10c for booklet on “What, When and How to Plant,” which you may deduct from your order for plants amounting to \$2.50 or more.

AQUILEGIA alpina. A dwarf, blue and white Columbine with attractive foliage. May. 10-12 inches. **Each, 25c; 3 for 65c; \$2.50 per doz.**

ALYSSUM saxatile compactum (Goldentuft). A glow of golden yellow in the rockery. April. 9 to 12 inches. **Each, 25c; 3 for 65c; \$2.50 per doz.**

ARABIS alpina (Rock Cress). Heads of white flowers in April. One of the earliest to flower. Plant in a well drained spot. Trim back after flowering to keep foliage neat and attractive. **Each, 25c; 3 for 65c; \$2.50 per doz.**

ARMERIA lauchiana (Sea Pink or Thrift). A low growing mat of dark green foliage with rose-colored flowers on 6-inch stems. Free bloomer. June to end of season. **Each, 30c; 3 for 65c; \$3.00 per doz.**

CAMPANULA carpatica (Harebell). A pretty species growing in compact tufts. Eight inches high. Flowers clear blue. Blooms June to October. **Each, 25c; 3 for 65c; \$2.50 per doz.**

DIANTHUS caesius (Cheddar Pink). Close growing tufts of grayish leaves that are ornamental in the rockery even when not in flower. Clove-scented single pink flowers. June. 6 to 8 inches high. Free bloomer. **Each, 25c; 3 for 65c; \$2.50 per doz.**

DIANTHUS deltoides (Maiden Pink). Small rose flowers in profusion, with pretty green foliage. June. 6 to 8 inches. **Each, 25c; 3 for 65c; \$2.50 per doz.**

FESTUCA glauca. Tufts of blue-green foliage. A group of this pretty grass makes a delightful contrast in the rock garden. **Each, 25c; 3 for 65c; \$2.50 per doz.**

GYPSOPHILA repens (Creeping Gypsophila). A very attractive creeping plant for the rockery, with a profusion of white flowers in July and August. Only a few inches high but will cover a space of 18 to 20 inches. **Each, 25c; 3 for 65c; \$2.50 per doz.**

LINUM alpinum (Flax). For the rock garden in full sun. Prostrate branches of fine foliage and pale blue flowers all summer. **Each, 25c; 3 for 65c; \$2.50 per doz.**

NEPETA Mussini (Catnip). Gray foliage and lavender-blue flowers. Low growing but rather long trailing branches, especially attractive in the rockery. **Each, 25c; 3 for 65c; \$2.50 per doz.**

PHLOX subulata (Moss Pink). Low growing Phlox, flowering May. Valuable in the rock garden. White, rose and lavender. Any of the above Phlox, **each, 25c; 3 for 65c; \$2.50 per doz.**

SAPONARIA ocymoides (Rock Soapwort). A showy dwarf trailing plant for the rock garden or rock walls. Pink flowers. May and June. **Each, 25c; 3 for 65c; \$2.50 per doz.**

STATICE incana. Rather coarse small white flowers in large panicles. Effective in the rockery. Flowers can be dried for winter. **Each, 25c; 3 for 65c; \$2.50 per doz.**

THYMUS serpyllum (Mother of Thyme). Creeping plant with fragrant leaves and pink flowers. For crevices in walls and steps and dry sunny places in the rock garden. **Each, 25c; 3 for 65c; \$2.50 per doz.**

TUNICA saxifraga (Coat Flower). A pretty dwarf plant with pink flowers and fine foliage. Flowers most of the summer. **Each, 25c; 3 for 65c; \$2.50 per doz.**

VERONICA teucrium (Speedwell). Intense deep blue flowers on prostrate stems, flowers in June **Each, 30c; 3 for 65c; \$2.50 per doz.**

VIOLA jersey gem. Sweet scented violet colored flowers are borne on stems that stand up in all kinds of weather. Fine for the border or rockery **25c each; 3 for 65c; \$2.50 per doz.**

VIOLA lutea. Clear yellow flowers. **Each, 25c; 3 for 65c; \$2.50 per doz.**

VINCA minor (Periwinkle). Trailing plant with oval dark green leaves and blue flowers. **Each, 25c; 3 for 65c; \$2.50 per doz.**

Sempervivum

SEMPERVIVUM arachnoideum (Cobweb Houseleek). Medium-sized green rosettes of leaves connected by fine silvery, weblike hairs, hence the name. Star-shaped rose-colored flowers. **Each, 25c; 3 for 65c; \$2.50 per doz.**

arenarium. Tiny rosettes of green leaves, in bunches. Spreads readily. Fine for the small rock garden. **Each, 35c; 3 for 85c; \$3.00 per doz.**

Doellianum. Hairy rosettes of green leaves, tinted red at the tips. Red flowers, June and July. **Each, 35c; 3 for 85c; \$3.00 per doz.**

Funcki. Brownish rosettes with green tips giving a little different color effect. **Each, 35c; 3 for 85c; \$3.00 per doz.**

gloiberum. Flattened rosettes 2 or 3 inches across with pale yellow flowers in June. **Each, 35c; 3 for 85c; \$3.00 per doz.**

tectorum (Hen and Chickens). Broad rosettes of green with reddish tips, flowers pale red **Each, 25c; 3 for 65c; \$2.50 per doz.**

Sedum - Stonecrop

Sedums vary widely in form of growth, flowers and foliage, are easy to grow, and the low growing varieties are especially useful in the rock garden.

SEDUM acre (Golden Moss). Low growing green fleshy leaves, covered with star-shaped yellow flowers useful for covering dry bare places. **Each, 20c; 3 for 50c;**

album. Somewhat like Acre in style and growth, but the leaves have a bluish cast and the growth is heavier. Flowers are nearly white. Rampant grower. **Each, 20c; 3 for 50c.**

Ewersi. Blue-gray foliage and dull rose-colored flowers in summer. 6 inches. For clefts in the rockery. **Each, 20c; 3 for 50c.**

Forsterianum. A very attractive form with branches something like very dense spruce branchlets. Leaves have a bluish cast, flowers yellow. **30c each; 2 for 50c.**

reflexum. Light green fleshy leaves touched with bronze in the fall. Yellow flowers **Each, 20c; 3 for 50c.**

sarmentosum (String Sedum). Spreading light green foliage and greenish yellow flowers. Requires good drainage. Attractive growing over the face of a rock. Vigorous grower. **Each, 20c; 3 for 50c.**

spectabile (Showy Stonecrop). Grows from 12 to 18 inches tall. Useful in the rockery and valuable in the perennial border. Pink flowers in September. Will do well in either sun or shade **Each, 20c; 3 for 50c.**

spectabile Brilliant. Similar to the preceding variety but flowers are dark rose or red color. **Each, 20c; 3 for 50c.**

stoloniferum coccineum. Dark rose-colored flowers and foliage has a reddish tinge during summer. **Each, 20c; 3 for 50c.**

ROCK GARDEN COLLECTION

Sedum Collection

1 Each of all nine varieties of Sedums labeled. \$1.90 Value **\$1.50**
for ONLY Postpaid

TULIPS Charles A. Pfeiffer's Choice Dutch Bulbs

When and How to Plant

Tulips and other Dutch bulbs can be planted any time in the fall before the ground freezes, but October and November are the two best months. Plant Tulips in beds or borders four to five inches deep and about six inches apart. A light covering of straw or hay is advisable in the Northern States but do not put this on until after the ground is frozen solid.

DARWIN TULIPS

Darwin Tulips are beautifully outlined, cup-shaped and carried on tall, stiff stems. They are unexcelled either as bedding Tulips or for cut flowers. The colors vary from jet black, crimson, scarlet and purple to lilac, mauve, pink, yellow and all the intermediate blended and pastel shades.

The bulbs furnished on the following list are Super-Quality, top size bulbs that are sure to please you.



A Tulip field blooming at Pfeiffer's

DARWIN TULIPS

	PER DOZ.	PER 100
Baronne de la Tonnaye, Vivid rose....	\$.50	\$3.50
Centenaire, Rosy purple.....	.50	3.50
Chant de Cygne, Large fiery red, blue base.	.75	6.00
Clara Butt, Soft bright salmon-pink.....	.50	3.50
Dream, Large lilac.....	.70	5.00
Farncombe Sanders, Fiery scarlet.....	.50	3.50
Gretchen, Light pink.....	.50	3.50
Inglescombe Yellow, Finest yellow.....	.50	3.50
King Harold, Dark red.....	.60	4.00
La Tulipe Noire, The true black Tulip..	.60	4.00
Le Notre, Lively rose.....	.60	4.00
La Fiancee, Lilac rose, large.....	.60	4.00
Louis de la Valliere, Orange-red.....	.70	5.00
Mme. Krelage, Rosy pink, edge light rose..	.50	3.50
Mrs. Potter Palmer, Finest purple.....	.60	4.00
Petrus Hondius, Soft rosy carmine.....	.60	4.00
Pride of Haarlem, Carmine-rose.....	.50	3.50
Princess Elizabeth, Vivid rose.....	.60	4.00
Prof. Rauwenhoff, Rose red.....	.50	3.50
Rev. H. Ewbank, Heliotrope-lilac.....	.50	3.50
The Sultan, Black.....	.50	3.50
White Queen, Nearly pure white.....	.60	4.00
Wm. Pitt, Fiery red.....	.60	4.00

3 each of the preceding 23 varieties labeled for \$3.00 Postpaid

10 each of the preceding 23 varieties labeled for \$9.00 Postpaid

Lily-Flowered Tulips

This is an entirely new strain of Tulips that is just being developed. The flowers are borne on long straight, strong stems and as the name implies, they have the grace, shape and beauty of a Lily. They are a wonderful addition to the Tulip family and you should by all means include some of them in your planting this fall. They are classed with the late varieties, blooming at the same time as the Darwins or Cottage.

	PER DOZ.	PER 100
Mixed colors.....	\$.60	\$ 4.50

BREEDER TULIPS

Because of their immense size, their rare colorings and their complete dependability, Breeder Tulips are rapidly becoming more popular every year. They are the parent Tulip that the many colors of Darwins have been developed from. They bloom in May about the same time as the Darwins. The colors include many found in no other flower, such as browns, bronzes, purples, blue-blacks, deep mauves, dull gold and dark lilac, all exquisitely blended.

	PER DOZ.	PER 100
Apricot, Apricot orange.....	\$.60	\$4.50
Bacchus, Dark blue, plum color, large...	.75	5.50
Bronze Queen, Bronzy yellow-apricot...	.60	4.00
Cardinal Manning, Violet and rose-bronze.....	.60	4.00
City of Haarlem, Brilliant carmine.....	.85	6.50
Copernicus, Copper-bronze.....	.60	4.00
Dom Pedro, Coffee-brown.....	.85	6.50
Faust, Dark purple-maroon.....	.80	6.00
Fairy (Panorama), Mahogany.....	.60	4.00
Godet Parfait, Dark plum color, white base	.70	5.00
Louis XIV, Purple, flushed golden bronze.	.70	5.00
Orange Beauty, Beautiful orange.....	.85	6.50
Prince Albert, Brilliant mahogany-brown.	.60	4.50
Professor Schotel, Clear lilac violet.....	.70	5.00
Sanspareil, Blue-violet.....	.70	5.00
St. James, Old rose edged bronze.....	.70	5.00
Velvet King, Velvety purple.....	.80	6.00
Vulcan, Violet bordered orange.....	.85	6.50

3 each of the preceding 18 varieties labeled for \$3.00 Postpaid

10 each of the preceding 18 varieties labeled for \$9.00 Postpaid

“More for Your Money”

May-Flowering or Cottage Tulips

	PER DOZ.	PER 100
Gesneriana Lutea , Golden yellow, sweet scented.....	\$.50	\$3.00
Gesneriana Spathulata , Bright scarlet..	.60	4.00
John Ruskin , Salmon-rose, yellow margin..	.50	3.50
Orange King , Beautiful orange.....	.60	4.00
Picotee (Maidens Blush) White, pink margin..	.50	3.00

3 each of the preceding 5 varieties labeled for 60c postpaid
 10 each of the preceding 5 varieties labeled for \$1.75 postpaid

Early Double Tulips

	PER DOZ.	PER 100
Azalea , Rose, very fine.....	\$.65	\$5.00
Murillo , White, tinged rose.....	.55	4.00
Rubra Maxima , Crimson-scarlet.....	.65	5.00
Salvator Rosa , Deep rose and white.....	.65	5.00
Tearose , Primrose yellow.....	.65	5.00
Titian , Orange-red, yellow edged.....	.65	5.00

3 each of the preceding 6 varieties labeled for 90c
 10 each of the preceding 6 varieties labeled for \$2.70

Early Single Tulips

	PER DOZ.	PER 100
Cramoisi Brilliant , Brilliant crimson.....	\$.50	\$3.50
Diana , Pure white.....	.55	4.00
Ibis , Deep rose.....	.55	4.00
Keizerskroon , Scarlet, broad yellow edge..	.65	5.00
Yellow Prince , Pure yellow, shaded orange	.65	5.00

3 each of the preceding 5 varieties for 70c
 10 each of the preceding 5 varieties for \$2.00

Parrot or Dragon Tulips

	PER DOZ.	PER 100
Crimson Beauty , Dazzling dark red....	\$.60	\$4.00
Lutea Major , Splendid yellow.....	.60	4.00
Markgraaf , Yellow and red.....	.60	4.00
Mixed50	3.50

What to Know About Tulips

Tulips can be obtained and must be planted only in the fall. A covering of straw or hay is recommended after the ground is frozen solid in the North. To those who are confused about the different varieties, we want to say that they do not all bloom at once. Some are early, some late. The order they bloom in is as follows: Single Early, Double Early, Rembrandt, Darwin, Cottage, Lily Flowered, then Parrots and lastly the beautiful, stately Breeders.

By planting some of each type you can understand how easy it is to have Tulips blooming from early spring to early summer.

Other Dutch Bulbs

	PER DOZ.	PER 100
Crocus , Fine mixed.....	\$.35	\$2.00
Muscari , Heavenly Blue, (Blue Grape Hyacinths).....	.35	2.00
Scilla Sibirica , Clear deep blue.....	.40	2.50
Snowdrops35	2.00

Pfeiffer's Dutch Hyacinths

The varieties or colors listed below have been selected for their free flowering qualities, and are especially suited for outdoor planting

	EACH	PER THREE	PER DOZ.
Blue	\$.20	\$.50	\$1.75
Purple20	.50	1.75
White20	.50	1.75
Red20	.50	1.75
Pink20	.50	1.75



Darwin Tulips used as a border

Mixed Darwin Tulips

This Collection consists of over fifteen varieties of the finest Darwin Tulips grown. The colors include dark red, bright pink, yellow, black, light pink, bright red, violet and many others, truly a wonderful collection

40 Bulbs - \$1.00
 85 Bulbs - 2.00
 135 Bulbs - 3.00

All Postpaid

Mixed Breeder Tulips

These giant flowering varieties are becoming more popular every year. They bloom at the same time as the Darwins, and this Collection consists of such colors as copper bronze, violet and rose-bronze, velvety purple, mahogany, dark purple, maroon, purple flushed gold, and many others. A well balanced Collection at prices never before equalled.

24 Bulbs - \$1.00
 50 Bulbs - 2.00
 110 Bulbs - 4.00

All Postpaid

Pfeiffer's Fine Hardy Lilies

Candidum (Madonna Lily). Clear waxy white fragrant Flowers. Bulbs should be planted in August or early September to insure the necessary fall growth which this variety needs. Because of this fact we are not including them in our Lily Collection. Large bulbs 40c each; 3 for \$1.00.

Elegans. Flowers held erect on the stem. Orange, slightly spotted. 1 to 2 feet. June. 25c each; \$2.50 per doz.

Regale (Regal Lily). White, shading to yellow in the center, and tinted pink on the outside. Blooms in July. 2 to 3 feet. Large bulbs 30c each; 4 for \$1.00.

Tenuifolium (Coral Lily). Small, bright scarlet flowers on slender stems, 1 to 2 feet. June-July. Pleasing fragrance. 25c each; \$2.50 per doz.

Tigrinum (Tiger Lily). The old fashioned Tiger Lily of our gardens. Orange spotted purple. Large bulbs 25c each; \$2.00 per doz.

Umbellatum (Candlestick Lily). Orange-red flowers in upright umbels, resembles Elegans but grows taller and is a few days later. Large bulbs 25c each; \$2.00 per doz.

Lily Collection No. 1

5 FOR \$1.00

1 Liliun Tigrinum.....	\$.25
1 Liliun Regale.....	.30
1 Liliun Umbellatum.....	.25
1 Liliun Tenuifolium.....	.25
1 Liliun Elegans.....	.25

\$1.30

VALUE \$1.30
 POSTPAID FOR ONLY \$1.00

Lily Collection No. 2

15 FOR \$2.00
 3 Each Of The Above
 5 Varieties

15 LILIES POSTPAID FOR ONLY \$2.00



Liliun Regale—The Regal Lily

Write your order on this sheet and it will be promptly shipped at proper time for planting

ORDER SHEET

THE PFEIFFER NURSERY

WINONA, MINNESOTA

Growers of

Prize Winning Peonies, Iris, Gladiolus, Tulips, etc.

Ship to (Name)..... Date.....

Street or
R.F.D. No..... Ship by.....

Town or City.....

County and State.....

Quantity	Name of Plants	Price Each		Total Price

(See opposite side for Free Offer)

FREE PLANTS *and* BULBS

Just Send Us the Names and Addresses of Home-Owning Neighbors
and Friends Who Have Gardens and might be Interested in Flowers

As a means of putting our catalog into the hands of more flower lovers, and to acquaint them with PFEIFFER QUALITY, Bargain Offers and Collections, we ask the cooperation and help of all Pfeiffer customers.

All we ask of you is that when you send in your order for \$2.00 or more, you include the names and addresses of a few of your friends or neighbors who own their homes, love flowers and might be interested in our products.

If you have sent in names before please send names other than those previously sent.

Remember, the names and addresses must be sent in with an order for \$2.00 or more. Then for your kindness we will include something extra, (Our Selection), absolutely free, and postpaid to your door as all our orders are.

NO FREE PLANTS UNLESS ABOVE REQUIREMENTS ARE COMPLIED WITH

THE PFEIFFER NURSERY

Winona, Minn.

“More for Your Money”

NARCISSUS

At Give-Away Prices

Also called Daffodils and Jonquils. The colors are mostly yellow or white and combinations of both. The varieties we offer are hardy, and should be planted outdoors. The blooming season in northern states is April and May, making them a welcome addition when flowers are scarce. The stock we offer is all of our own growing, strictly first class, and at prices you will not find duplicated elsewhere.

	PER DOZ.	PER 100
King Alfred, All yellow, large trumpet.....	\$1.50	\$10.00
Princeps, Early, Bi-color.....	.60	4.00
Sir Watkin, Sulphur yellow perianth, deep yellow cup, tinged with orange.....	.75	6.00
Laurens Koster (Poetaz), Creamy white with orange-yellow cup Five or more blooms per stem.....	.75	5.00
Poeticus (Pheasants Eye), Pure white, scarlet edged cup. Fine for naturalizing.....	.75	5.00

18 Mixed Narcissus Bulbs \$1.00

ALL PRICES ARE POSTPAID

GLADIOLUS BULBS

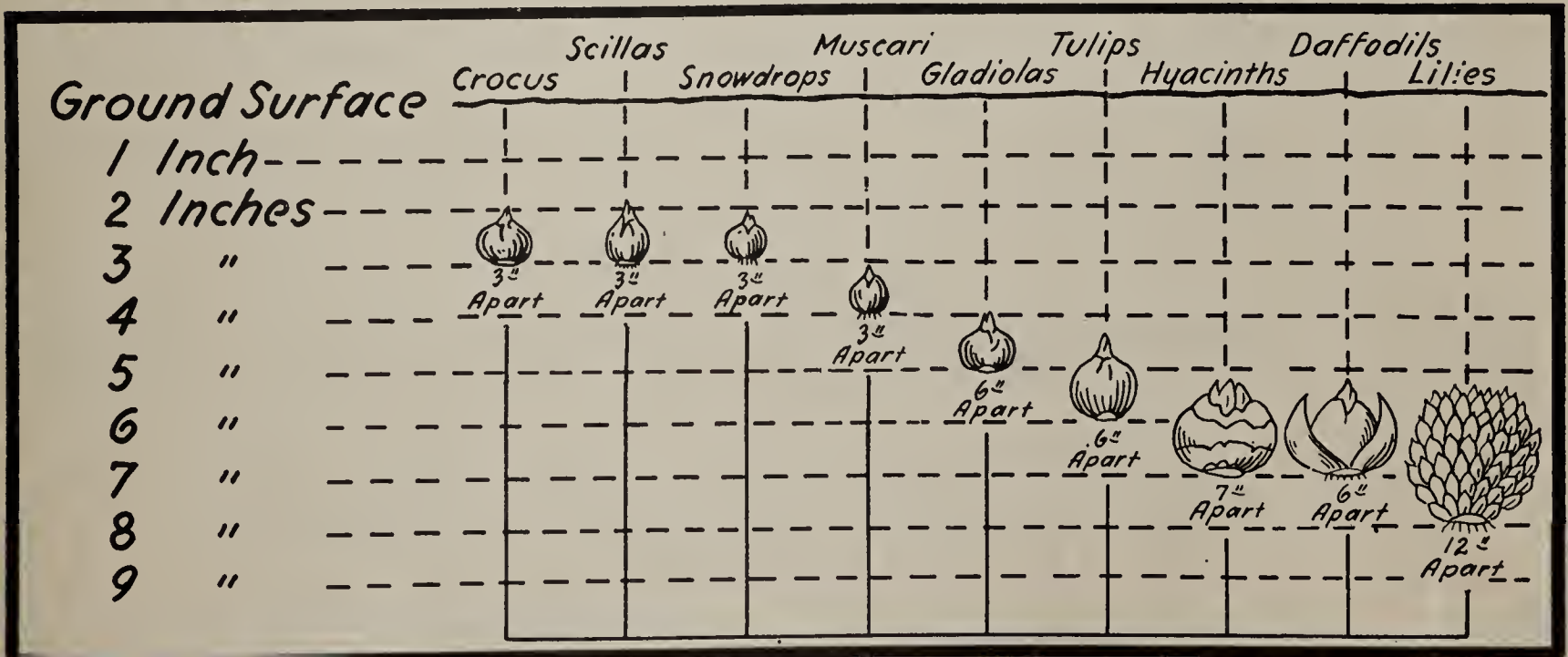
We grow them by the millions on an extensive scale, nearly 40 acres in Glads again this year.

We will have all of the good standard varieties and many of the newer and better kinds. We expect to issue a special Glad List early next winter, and you can rest assured, our prices on them will be lower than ever.

If you are interested, be sure your name is on our mailing list so you will receive a copy just as soon as it is issued.

Better Gardening

A sixty-four page booklet entitled Better Gardening, giving complete instructions on What, When and How to Plant will be mailed to any address in U. S. for 10c. You may deduct this 10c from your order for plants amounting to \$2.50 or more.



The above sketch shows how far apart and how deep to plant different varieties of bulbs.

\$1.00 Bargains

\$1

PEONY

Collection No. 1

This is a Collection of four beautiful Peonies. Not the highest priced or the highest rated, but four fine Peonies you will be proud to start with. It consists of a dark pink, light pink, white and dark red. Last year these four Peonies sold for \$3.00, this year you can have them in this Collection for only \$1.00.

Edulis Superba—Dark pink
Susan B. Anthony—White
Rachel—Dark red
La Perle—Light pink

All 4 For Only \$1.00 Postpaid

\$1

IRIS

Collection No. 1

We usually have a surplus of many different varieties of Iris, and for those who just want a big array of color and do not care for the names, we make up this Collection of unnamed varieties. We guarantee you at least \$4.00 worth of plants at the regular list price.

ONLY \$1.00 POSTPAID

25 Varieties Unlabeled
All Different

\$1

TULIPS

Mixed Darwin

This Collection consists of over 15 varieties of the finest Darwin Tulips grown. The colors include dark red, bright pink, yellow, black, rose, light pink, bright red, violet and many others. Truly a wonderful mixture of all these colors.

40 Bulbs - \$1.00

All Postpaid

\$1

PHLOX

Collection No. 1

One each of the following six varieties: Eclairer, carmine rose; Independence, white; R. P. Struthers, red; Rheinlander, soft pink; Siebold, orange scarlet; Thor, Salmon pink.

All Six Only \$1.00 Postpaid

\$1

LILY

Collection No. 1

5 FOR \$1.00

1 Liliun Tigrinum.....	\$.25
1 Liliun Regale.....	.30
1 Liliun Umbellatum.....	.25
1 Liliun Tenuifolium.....	.25
1 Liliun Elegans.....	.25

Value \$1.30 \$1.30

POSTPAID FOR ONLY \$1.00

\$1

NARCISSUS

Also called Daffodils and Jonquils. The colors are mostly yellow or white and combinations of both. The varieties we offer are hardy, and should be planted out doors. The blooming season in northern states is April and May. The stock we offer is all of our own growing, strictly first class, and at prices you will not find duplicated elsewhere.

18 Mixed Narcissus Bulbs \$1.00

ALL PRICES ARE POSTPAID

\$6 .. worth for only .. \$5

Every Collection on this page is an outstanding bargain. In addition to this you can have all six of them for the price of five.

The Pfeiffer Nursery, Winona, Minnesota