

Historic, Archive Document

Do not assume content reflects current scientific knowledge, policies, or practices.

62.67

★ MAR 20 1911
U. S. Department of Agriculture



QUALITY SEEDS
The Templin-Crockett-Bradley Co
5700 Detroit Ave. Cleveland, O

SEMENTY



All of this modern, fireproof building, containing more than 38,000 square feet of floor space, is devoted exclusively to the handling of your orders

Mr. and Mrs. Gardener—Everywhere, U. S. A.

DID you ever stop to think how closely the success of your garden is related to the success of our business? Both depend primarily on the vitality of the seeds we send you. The fact that our business has reached the great magnitude it now has is entirely due to the extreme care we exercise in selecting the seed and testing it before sending it to you. Our growth has been made possible only because of the yearly success of thousands of gardens.

Proof of our watchfulness over quality is told repeatedly in the hundreds of letters written to us each year by customers. They point to some outstanding feature of their gardens and are kind enough to say that we are responsible. Reports of one hundred and forty bunches of celery from one packet of seed, ten dollars' worth of tomatoes sold from one packet, first prizes at county and state fairs in many states; all of these things help to form the reason why we dare to call our seeds, "QUALITY SEEDS".

The few varieties that we offer have been selected because they will all give the best crop returns. That the average gardener wants just these kinds is evidenced by the enormous demand. For example, more than three hundred thousand packets of Asters were sold by us last year. If it were not for this great volume of one kind of seeds, the price would have to be higher than three cents per packet and this is true with all the varieties we offer.

The ability to secure only the highest quality seeds is gained by years of experience and study. We have learned who the trustworthy growers are, which of

them are most careful in maintaining quality, and why one grower may produce good corn but not necessarily the best cabbage seed.

We realize that the element of service to our customers is second only to quality in importance. Facilities for the prompt and accurate filling of orders have been added from time to time as the business has grown. Just last summer we built the one story addition shown in the rear of the main building in the illustration above. This was done to enable us to carry a larger stock of bulbs and shrubs and to give us more room in which to fill the orders in that department. All of this in your interest.

You will be welcome during any spring rush to come in and go through the big Templin-Crockett-Bradley plant while it is in operation. You would be interested in the manner in which the more than two hundred employes are able to fill the thousands of individual orders each day.

We wish you success this season and we know that "QUALITY SEEDS" will help.

All prices include delivery charges.

The Templin-Crockett-Bradley Company FEB -9 1920

5700 Detroit Avenue, Cleveland, Ohio

© 1 A 562656

"Quality Seeds"

Are Carefully Selected for You

When you buy "Quality Seeds" you are protecting your interests because one very important factor in gardening is the quality of the seeds used. We are sure of the quality because our growers take every precaution in selecting stock seeds and in handling during the growing and harvest season. Besides this, we make careful tests right here in our building when the seeds arrive. This double check makes it possible for us to guarantee our seeds as we do at the bottom of this page.

Standardizing Our Varieties Means a Saving for You

Experts tell us and our own experience teaches us that these standard varieties will give the greatest amount of general satisfaction. The price of three cents per packet could not possibly be maintained if we offered any large part of the thousands of varieties which are grown. With the small list, we find that the demand for each variety is greatly increased so that we can buy in large quantities and do the packeting automatically by machine rather than by hand. This is a direct saving to you.

This Catalog Tells How Many Seeds are in Each Packet

Because it will help you to determine how many packets of each variety of seeds you will need for your garden, we tell you how many seeds each packet will contain. Just notice this feature in this catalog and on the enclosed order blank. This leaves no uncertainty in your mind as to how much your money will buy.

Why You Should Use Our Order Blank

You should use the enclosed order blank because it is almost a complete catalog in itself. Three easy steps. First, fill in your name and address at the top in the space provided; second, place the proper figures for the number of items you wish to order in the columns headed, "No.;" third, fill in the total prices, for the goods selected, in the columns headed, "PRICE." Isn't that easy? No names of seeds, bulbs or shrubs to write out. No letter paper needed, for you don't even have to write a letter of instruction. Each item is numbered consecutively on the order blank just as it appears in the catalog. Try it for yourself and see how easy it is.

All Prices Quoted Include Delivery Charges.



Our Guarantee

We guarantee all seeds to be true to name and of strong vitality as described in this catalog. Should any prove to be unsatisfactory, we will replace them with other seeds of purchaser's selection or refund the price paid for such items.

Our interests are mutual.

The Templin-Crockett-Bradley Co.

3 QUALITY VEGETABLE SEED 3

CENTS
PER
PACKET

In the following seven pages of vegetable seeds we have selected just a few of what we believe to be the very best and most desirable varieties, and most distinct types in each class, believing that a multitude of varieties is confusing to the purchaser. We also state approximately the number of seeds each 3 cent packet will contain.

CENTS
PER
PACKET

1 Asparagus

Columbian Mammoth White. A very strong-growing variety, producing very large, white stalks, equal in flavor to the green varieties. $\frac{1}{4}$ ounce pkt. (300 seeds) 3 cts., ounce 10 cts. For Asparagus Roots, see page 17.



No. 2

No. 5

Green-Podded Bush Beans

Each 3-cent packet of Bush Beans will contain 65 to 75 seeds.

2 Burpee's Stringless Green-Pod One of the most popular of the green-podded varieties. Early, very productive and always free from strings. Whether for home or market, we know of no variety combining more good qualities. Pkt. 3 cts., $\frac{1}{4}$ lb. 12 cts., lb. 40 cts.

3 Giant Stringless Green-Pod An exceedingly productive and very handsome variety. A few days later than Burpee's Stringless. Pkt. 3 cts., $\frac{1}{4}$ lb. 12 cts., lb. 40 cts.

4 Thousand-to-One, or Old Refugee A standard, very productive variety for main crop. Largely used for canning. Pkt. 3 cts., $\frac{1}{4}$ lb. 12 cts., lb. 40 cts.

Yellow or Wax-Podded Bush Beans

5 New Webber Wax We asked our bean-grower to name what he considered the best Wax Bean. His reply was, "Webber Wax." Very vigorous, healthy, and wonderfully productive. Broad, flat, golden yellow pods that are absolutely free from strings. Pkt. 3 cts., $\frac{1}{4}$ lb. 15 cts., lb. 50 cts.

6 Refugee Wax Another splendid new Wax Bean. Pods 4 to 5 inches long, thick, fleshy, and stringless. Pkt. 3c., $\frac{1}{4}$ lb. 12c., lb. 45c.

7 Golden Wax One of the best-known varieties. Extra-early and productive. Pods fleshy, and tender. Pkt. 3 cts., $\frac{1}{4}$ lb. 12 cts., lb. 45 cts.

Pole Beans

8 Kentucky Wonder or **Old Homestead.** The most useful and satisfactory of all the green-podded Pole Beans. Early; wonderfully prolific; pods very long, in clusters. May be planted with corn. Pkt. (65 to 75 Beans) 3 cts., $\frac{1}{4}$ lb. 12 cts., lb. 45 cts.

9 Golden Cluster Wax One of the best wax-podded pole varieties. Pods 6 to 8 inches long, golden yellow, and stringless. Pkt. (about 50 Beans) 3 cts., $\frac{1}{4}$ lb. 15 cts., lb. 50 cts.



Bush Lima Bean

Lima Beans

10 New Wonder Bush Lima The recognized standard of bush Lima Bean quality. Pods large. This matures in midseason. Pkt. 3 cts., $\frac{1}{4}$ lb. 15 cts., lb. 50 cts.

11 King of the Garden Pole Lima One of the best for main crop. Produces until killed by frost. Best quality. Pkt. 3 cts., $\frac{1}{4}$ lb. (about 75 seeds) 12 cts., lb. 45 cts.

Table Beets

Each 3c. packet will contain about 300 seeds.

12 Crosby's Egyptian One of the most popular table Beets for home or market. Extremely early, dark blood-red. Pkt. 3c. large (oz.) pkg., 15c.

13 Crimson Globe This splendid variety is largely planted for main crop. Uniform, globe-shaped, perfectly smooth, without rootlets. Flesh is rich blood-red, sweet and tender. Pkt. 3 cts., large (ounce) pkg. 15 cts.

14 Detroit Dark Red Very popular throughout the West. Uniform turnip-shaped. Pkt. 3 cts., large (ounce) pkg. 15 cts.

15 Eclipse One of the best known. Extra-early, round, smooth, blood-red roots. We offer best imported French-grown seed of this variety—a guarantee of finest quality. Pkt. 3 cts., large (ounce) pkg. 15 cts.

16 Swiss Chard or **Spinach Beet.** No other garden vegetable will produce more nutritious food from a small space than Swiss Chard. Of rapid vigorous growth. The foliage and leaf-stalks used same as asparagus or spinach. Pkt. (300 sds.) 3c., oz. pkg. 15c.



Crosby's Egyptian Beets



Swiss Chard

17 Mangel-Wurzel

Golden Giant. Very large, smooth roots, growing more than half above ground. Easy to harvest. An immense cropper and good keeper. Just the thing for poultry or stock in winter. Pkt. (300 seeds) 3 cts., ounce 12 cts., $\frac{1}{4}$ lb. 40 cts.

18 Brussels Sprouts

Perfection. Belongs to the cabbage family. Small heads of delicious quality form along the stem. Pkt. (400 to 500 seeds) 3 cts.

Cabbage

Each 3-cent packet of Cabbage will contain 400 to 600 seeds.

19 Early Jersey Wakefield The best-known and most popular early variety. Uniform, oval, solid heads. More largely grown for early market than any other variety, and equally desirable for the home garden. There is more Wakefield Cabbage seed sold than of all other early varieties combined. Pkt. 3 cts., 1/4 ounce 12 cts.

20 Copenhagen Market A desirable early variety from Denmark. Solid round heads of excellent quality. Claimed to be as early as Jersey Wakefield, with much larger, more solid heads. If you have never grown this variety give it a trial. Pkt. 3 cts., 1/4 ounce 20 cts.



Burpee's Surehead

21 Fottler's Improved Brunswick. Very popular and desirable. The large, solid, flat heads, on short stems, have few outer leaves. Unsurpassed for fall and winter use. Pkt. 3 cts., 1/4 oz. 10 cts.

22 Surehead "Burpee's" Uniform, large, round, flat heads. Very solid and of fine quality. Largely grown for main-crop winter use. Pkt. 3 cts., 1/4 ounce 12 cts.

23 Flat Dutch Premium Late. This is the finest strain of Late Flat Dutch Cabbage on the market. The heads are flat and grow remarkably large, even, and very solid. Stems grow short, and the quality of the Cabbage is very fine. It is universally popular and probably more largely grown than any other main crop variety. Pkt. 3 cts. 1/4 ounce 12 cts.

24 Danish Ballhead Very popular winter variety from Denmark. Medium, round, very solid heads of superior quality. A good keeper. Pkt. 3 cts. 1/4 ounce 15 cts.

25 Red Dutch Pickling Popular for slaw and pickling. Pkt. 3 cts.

26 Pe-Tsai or Celery Cabbage. A new vegetable from China, that is attracting much attention. By tying up the large outer leaves it blanches like celery. As a salad it rivals the finest lettuce, or cooked like cabbage or spinach it makes splendid greens. For main crop sow the seed last of August, and transplant a foot apart when large enough. Store in a cool cellar for early winter use. Pkt. (500 seeds) 3 cts., 1/4 ounce 10 cts.



Early Jersey Wakefield



Pe-Tsai

Cauliflower



Cauliflower

27 Early Snowball We believe this to be the very best variety in existence. It is early, of dwarf compact growth and sure to produce fine heads. Very much depends on the quality of Cauliflower seed. We handle only the very best Danish grown seed from a well known reputable grower, which we confidently recommend. Pkt. (300 to 400 seeds) 10 cts., 1/8 ounce pkt. 25 cts.

Carrots

Each 3-cent packet of Carrot will contain one-sixth ounce, about 1,500 seeds.

28 Danvers Half-Long The most popular Carrot in cultivation. The roots will average 1 1/2 to 2 inches in diameter, and 5 to 6 inches long, holding their thickness well to the point. More largely grown than any other variety. Pkt. 3 cts., ounce 15 cts., 1/4 lb. 40 cts.

29 Guerande or Oxheart. Short, thick roots, 2 to 3 inches or more in diameter; abrupt, blunt points. Easily gathered. Finest quality for table use; also desirable for winter poultry food. Pkt. 3 cts., ounce 15 cts., 1/4 lb. 40 cts.

30 Mastodon Giant White. Best and largest stock Carrot grown. Nearly half its length grows above ground, making it easy to harvest. A wonderfully heavy yielder. Unsurpassed for feeding poultry and stock. Pkt. 3 cts., ounce 15 cts., 1/4 lb. 40 cts.



Celery

Celery

Each 3-cent packet of Celery will contain 1,000 to 2,000 seeds.

31 New Easy Blanching A new variety of stocky, medium growth. Matures quickly and is easily blanched. Tender, brittle, nutty flavor. Try it. Pkt. 3 cts., 1/4 ounce 15 cts.

32 Golden Self-Blanching The best of all early self-blanching varieties. Very largely grown for early market. Foliage light yellow, blanching easily. Pkt. (1,000 seeds) 3 cts., 1/4 ounce 20 cts.

33 Giant Pascal This is the standard variety to grow for winter use, being a good keeper. Broad, heavy, ribbed stalks of excellent quality. A universal favorite. Pkt. 3 cts., 1/4 oz. 10 cts.

34 Celeriac Turnip-rooted Celery. The large, solid, turnip-like roots are highly esteemed for boiling or flavoring soups, etc. Pkt. 3 cts., 1/4 ounce 10 cts.

35 Georgia Collards These belong to the cabbage family, and are largely grown in the South to use as boiling greens during the winter months. Also valuable for furnishing green forage for poultry, as it continues to grow all winter in the South. Pkt. about 1,000 seeds, 3 cts., 1/4 ounce 10 cts.



Carrots

Sweet Corn

Each 3-cent packet of Sweet Corn will contain one ounce



Golden Bantam

41 Pop Corn

36 Extra-Early White Cory This is an improvement over the Early Cory, being much larger and having a white cob. We believe it to be the best of the extra-early varieties. Pkt. 3 cts., ¼ pound 10 cts., lb. 35 cts.

37 Golden Bantam A very early Sweet Corn with golden-yellow grains. Generally considered the sweetest and tenderest variety in existence. Probably more extensively grown than any other early variety. Ears 6 to 7 inches long. Pkt. 3 cts., ¼ lb. 10 cts., lb. 35 cts.

38 New Golden Cream A golden-yellow type of the popular Country Gentleman. Medium early. Kernels long and pointed, placed irregularly on slender cob. You will be delighted with its sweet and delicious flavor. Pkt. 3 cts., ¼ lb. 12 cts., lb. 40 cts.

39 Country Gentleman or Shoe Peg. A well-known, medium-early variety which is *par excellence* where quality is desired. Very productive. Market-gardeners who supply hotels and high-class restaurants depend on this for main crop. Pkt. 3 cts., ¼ lb. 10 cts., lb. 35 cts.

40 Stowell's Evergreen The standard main-crop variety, excelling all other late sorts in productivity and fine quality. The most popular canning variety. The stock we offer is a specially narrow, deep grained strain grown for us by a man of twenty years' experience. We confidently recommend it. Pkt. 3 cts., ¼ lb. 10 cts., lb. 35 cts.

Improved White Rice. Every boy likes to grow Pop-Corn, and this is the most popular and satisfactory variety to plant, as it is very productive and its popping qualities are unexcelled. Pkt. 3 cts., ¼ lb. 10 cts., lb. 35c.



Country Gentleman



Imp. White Spine

other variety excels it in productiveness, and in color, form and quality it is all that can be desired. Normal size 5 to 6 inches long and 2 inches in diameter. Pkt. 3c. ½ oz. 10c.



Eggplant

plants blanched in autumn by tying up the outer leaves. Pkt. 3c. ½ oz. 10c.

49 Kohlrabi **Early White Vienna.** Also called Turnip-rooted Cabbage. Forms large tubers on the stem above ground. Should be used while young and tender. Plant at intervals for a continuous supply. Pkt. (400 to 500 seeds) 3 cts.

50 Kale or **Borecole.** Popular boiling-greens for fall, winter and spring. Quite hardy and deserves more general cultivation in the North. Pkt. (600 to 700 seeds) 3c; ½ ounce 10c.

51 Leek **Broad London Flag.** Belongs to the onion family, but does not form bulbs. The long thick neck of the plant is blanched in the fall and used same as young onions, having a sweet, onion-like flavor. Popular in South, but little known in North. Pkt. 3c.

Cucumbers

Each 3-cent packet of Cucumber will contain 100 to 125 seeds

42 Early Klondyke An extra-early strain of White Spine, remarkable for its shapely fruit and uniformly dark green skin. Popular with southern planters. Equally desirable for the home garden. Pkt. 3 cts. ½ ounce 10 cts.

43 Davis' Perfect Long, even fruits of uniformly fine form and smooth dark green skin. The handsome fruit always brings the top price in market. Thick, solid, white flesh, with very few seeds. Pkt. 3 cts., ½ ounce 12 cts.

44 Improved White Spine The best known and universally satisfactory variety, more extensively grown than any other. No



Improved Long Green

other variety excels it in productiveness, and in color, form and quality it is all that can be desired. Normal size 5 to 6 inches long and 2 inches in diameter. Pkt. 3c. ½ oz. 10c.

45 Westerfield's Chicago Pickle

This variety is preferred above all others by many of the largest pickling establishments, as it meets the most exacting requirements of critical pickle makers. It is the right size, shape, color, and quality. Vines healthy and very productive. Pkt. 3 cts., ½ ounce 10 cts.

46 Improved Long Green

A model in size, form, and beauty; uniformly long and smooth. Deep green in color, and a universal favorite for slicing. Fruit 12 to 15 inches long. Vines vigorous and productive. Short crop; supply limited. Pkt. (75 seeds) 3 cts., ½ ounce 15 cts.

47 Eggplant **New York Spineless.** The Eggplant is becoming more and more popular, and deservedly so. This is decidedly the best variety to plant. Fruit large, smooth, glossy, rich purple. Plants should be started early in hotbed and transplanted June 1. Pkt. (200 seeds) 3 cts., ½ ounce 10 cts.

48 Endive **Green Curled.** Highly prized as a salad during autumn and winter, or served like spinach. The Green Curled is the best-known and most desirable variety. Seed should be planted in July, and plants blanched in autumn by tying up the outer leaves. Pkt. 3c. ½ oz. 10c.



Kohlrabi

Lettuce

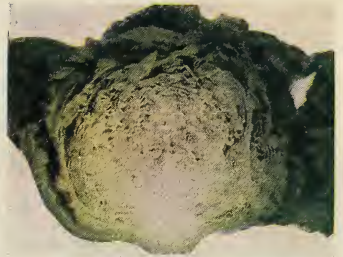
Each 3-cent packet of Lettuce will contain about 1,000 seeds

52 Early Curled Simpson One of the most satisfactory varieties for early outdoor planting, forming large, loose heads of an attractive yellowish green. The leaves are very tender. The best cut-and-come-again leaf Lettuce. Pkt. 3 cts., 1/2 ounce 10 cts.

53 Burpee's Wayahead An extra-early head Lettuce producing medium-sized heads which are tightly folded, the inner leaves blanching to a rich, buttery yellow. Always crisp and tender. A desirable home-garden Lettuce. Pkt. 3 cts., 1/2 ounce 10 cts.

54 Big Boston A large cabbage variety, forming big, compact heads. For both home and market. A fine, big, crisp, tender cabbage Lettuce. Pkt. 3 cts., 1/2 ounce 10 cts.

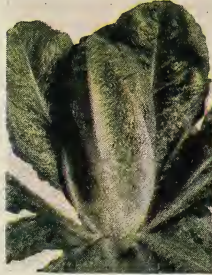
55 Early Prize Head This popular Lettuce forms large, tender, loose heads of bright green, crimped leaves, tinted brownish red. A very attractive and desirable early Lettuce. Pkt. 3 cts., 1/2 ounce 10 cts.



Improved Hanson

56 Improved Hanson In table quality the Hanson is perfection itself, being free from bitter taste. Forms immense, tender crisp heads. Pkt. 3 cts., 1/2 ounce 10 cts.

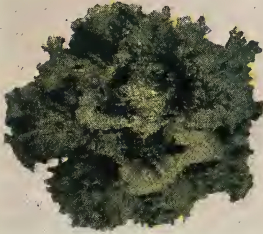
57 New York or Wonderful. Excellent for midsummer use, being noted for its heat-resisting qualities. Forms large heads that blanch creamy white. Of excellent quality. Belongs to the cabbage-head class. Pkt. 3 cts., 1/2 ounce 15 cts.



Cos

58 COS Romaine or Celery. An entirely distinct type of Lettuce that should be more largely grown. By many considered superior in quality to all others. Forms oblong heads of large size, the main rib of each leaf curving inward, and blanching white and tender. Whether grown in early spring, midsummer or autumn the leaves are always crisp and tender. Pkt. 3 cts., 1/2 ounce 10 cts.

59 California Cream Butter Also called Royal Summer Cabbage, and German Butter. A very reliable heading variety, outer leaves being spotted with brown. The heads are of a rich, golden yellow inside, and of a tender, buttery quality. Medium early, withstanding the summer heat. Also very desirable for autumn and early winter use. Pkt. 3 cts., 1/2 ounce 10 cts.



Early Curled Simpson

Muskmelon

Each 3-cent packet contains 100 to 125 seeds

60 Banana The melons grow 15 to 20 inches in length, in color and form not unlike a huge banana. Flesh thick, salmon in color, and of delicious quality. Pkt. 3 cts., 1/2 ounce 10 cts.

61 Osage or Miller's Cream. Sometimes called "the Queen of Melons." Is fast becoming one of the most popular varieties. Size medium to large. Skin dark green, slightly netted. Flesh rich salmon, very thick, and of extra-sweet melting quality. Pkt. 3 cts., 1/2 ounce 10 cts.

62 Rocky Ford or Golden Netted Gem. The best-known variety, largely grown around Rocky Ford, Colo., for city markets. Flesh green, thick, juicy, and of delicious flavor. Pkt. 3 cts., 1/2 oz. 10c.



Osage or Miller's Cream

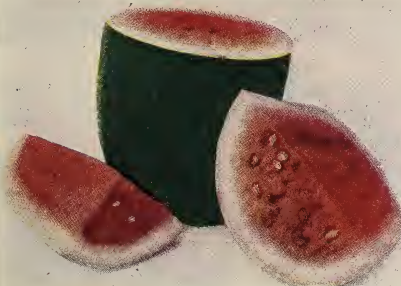
Watermelon

Each 3c. packet of Watermelon will contain 50 to 60 seeds

63 Tom Watson Probably the most popular melon now in cultivation. Grows to large size—40 to 50 pounds, oblong, dark green. Pkt. 3 cts., ounce 10 cts.

64 Halbert's Honey One of the finest melons. Medium size, oblong, dark green. Too tender to ship. Flesh deep red, sweet, and luscious. Pkt. 3 cts., ounce 10 cts.

65 Sweetheart Large, heavy fruit, half oval in shape. Solid deep red flesh of superior quality. A good keeper. Pkt. 3c., oz. 10c.



Tom Watson Watermelon



Kokra

66 Mustard Chinese Curled. Very large, curled leaves, of very rapid growth. Much used in the South for salad and boiling-greens, same as spinach. Claimed to be very healthful. Pkt. (1000 seeds) 3 cts., ounce 15 cts.

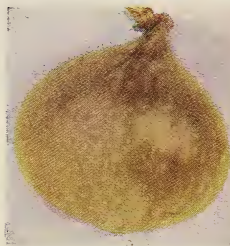
67 Okra or Gumbo, White Velvet. Largely used in the South, both as a separate dish and for soups. The tender seed-pods are cooked like asparagus. Should be more largely grown in the North. Pkt. (100 to 125 large seeds) 3 cts., oz. 10 cts.

68 Moss Curled. Very useful for flavoring soups, stews, and for garnishing. Use the tender green leaves. The leaves may also be dried, pulverized to a powder, and kept in bottles for winter use. Pkt. 3 cts., 1/2 ounce 10 cts.

69 Parsley Hamburg Turnip-Rooted. The roots are used instead of the leaves, and are esteemed for flavoring soups, etc. Pkt. (600 to 800 seeds) 3 cts.

Onions

Each 3-cent packet of Onions will contain 600 to 700 seeds



Prizetaker

and sweet. Best-known red Onion. **Pkt. 3 cts., ½ ounce 15 cts., ¼ lb. 75 cts.**

72 Prizetaker A splendid large-growing variety for home use. With favorable conditions they may be grown from seed, to weigh two pounds or more. Handsome, straw-yellow skin, resembling the imported Spanish Onion. **Pkt. 3 cts., ½ ounce 20 cts., ¼ lb. \$1.00.**

73 Southport White Globe The most attractive white Onion grown, always commanding the highest market prices. Perfect globe-shape, and clear, transparent skin; flesh crisp, and mild in flavor. **Pkt. 3 cts., ½ ounce 20 cts., ¼ lb. \$1.10.**

74 Southport Red Globe A beautiful, large, globe-shaped red Onion. Largely grown in the Onion sections for fall and winter markets. The seed we offer was especially grown for us from perfect, globe-shaped stock. **Pkt. 3 cts., ½ oz. 15 cts., ¼ lb. 90 cts.**

A special selection of the popular Yellow Globe Danvers, more extensively sections of Ohio than all other varieties com-



No. 74 No. 73 No. 70

Garden Peas

Each 3-cent packet of Peas will contain 75 to 100 seeds



Alaska Peas

75 Extra-Early Alaska or Earliest of all. The hardest of the extra-early varieties. Peas smooth, bluish green, very good quality. Always plant this variety for first-early. **Pkt. 3 cts., ¼ lb. 15 cts.**

76 First-in-Market Extra-early, smooth, white-seeded. Wonderfully prolific. Height 2 ft. Well-filled pods 2 ½ to 3 ins. long. **Pkt. 3 cts., ¼ lb. 15 cts.**

77 Nott's Excelsior An extra-fine Pea of dwarf, compact growth, 15 to 18 inches. The best of the larger wrinkled types. Very productive. Large, tightly packed pods of delicious sweet Peas. **Pkt. 3 cts., ¼ lb. 18 cts.**

78 Thomas Laxton A grand Pea in every respect. Height 18 inches, maturing just after Nott's. Peas a trifle larger and of exceptionally fine quality. You can make no mistake in planting this variety. **Pkt. 3 cts., ¼ lb. 18 cts.**

79 Alderman A splendid tall, main-crop variety, requiring brush to support it. Much more productive than the dwarfier varieties. Large, well-filled pods and of the most delicious quality. **Pkt. 3 cts., ¼ lb. 18 cts.**

80 Dwarf Gray Sugar

The pods are broken and cooked like string beans, while young and tender. Highly prized by many. Height of vines, 18 to 20 inches. Very productive. **Pkt. 3 cts., ¼ lb. 13 cts.**



Large Sugar Parsnips

81 Parsnip Large Sugar, or Hollow Crown. The standard variety for table use or stock-feeding. Large, smooth roots. Is enormously productive. **Pkt. (500 to 600 seeds) 3 cts., large ½ ounce pkt. 10 cts.**

Peppers

82 New Royal King A fine new variety, an improvement over the popular Ruby King. A very heavy bearer. Thick-meat and of mild flavor. Our seed was procured from the introducer. Owing to its fine quality, you can make sales at highest prices, even when the market is glutted with other varieties. **Pkt. (200 seeds) 3 cts., ½ ounce 10 cts.**



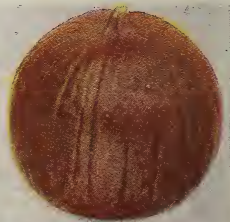
Royal King Pepper

83 Small Hot Varieties A mixture including Cayenne, Celestial, Tabasco, Coral Gem, Red Mexican and Red Cherry. Excellent for making pepper sauce, etc.; also very interesting to grow as ornamental plants in the garden or transplanted into large pots, for house decoration. **Pkt. (150 seeds) 3 cts., ½ ounce 10 cts.**

Pumpkins

84 Small Sugar Pie Fruit small in size, orange-yellow, flattened and slightly ribbed. Flesh thick and very sweet. Vines very prolific. The best for pies. **Pkt. (40 to 50 seeds) 3 cts., ounce 15 cts.**

85 Jumbo or King of Mammoths. Fruit grows to enormous size—often 150 to 200 pounds. Orange skin and yellow flesh of good quality for pies. Plant singly in rich soil, and beat your neighbors at the county fair next fall. **Pkt. (20 seeds) 3 cts., oz. 15 cts.**



Small Sugar Pumpkin

86 Rhubarb Victoria. Easily grown from seed, requiring two years or more to grow to mature size. **Large pkt. 3 cts., ounce pkt. 15 cts.** For Rhubarb roots, see page 17.

Radish

Each 3-cent packet of Radish will contain 300 to 400 seeds



No. 87 and No. 88

90 Philadelphia White Box

A very popular variety, quite similar to Scarlet Globe, except in color, being pure white. Has a small top, matures quickly. Pkt. 3 cts., 1/2 ounce 10 cts.

91 French Breakfast Half-long or olive-shaped. Bright scarlet, except tip, which is white. Pkt. 3 cts., 1/2 ounce 10 cts.

92 Early Long Scarlet Quick grower; handsome, long slender roots, and short top. One of the earliest and most dependable. Pkt. 3 cts., 1/2 ounce 10 cts.



New Crimson Giant

89 New Crimson Giant

A fine new Radish. Not quite so early as the Scarlet Globe, but growing quickly to a much larger size. It is deep globe or slightly olive-shaped, and crimson-scarlet color. Pkt. 3 cts., 1/2 ounce 10 cts.

A very popular variety, quite similar to Scarlet Globe, except in color, being pure white. Pkt. 3 cts., 1/2 ounce 10 cts.

Half-long or olive-shaped. Bright scarlet, except tip, which is white. Pkt. 3 cts., 1/2 ounce 10 cts.

Quick grower; handsome, long slender roots, and short top. One of the earliest and most dependable. Pkt. 3 cts., 1/2 ounce 10 cts.

93 Long White Icicle

A very fine long Radish. Medium early. Long, slender, transparent, white roots. They are of fine quality, having a peculiar freshness not found in other varieties. Pkt. 3 cts., 1/2 ounce 10 cts.

94 Chartier or Shepherd A well-known and very popular old variety. Entirely distinct from any other Radish. Fine for medium-early or fall planting. Pkt. 3 cts., 1/2 ounce 10 cts.

95 Above Summer Varieties Mixed A mixture of the above summer varieties, interesting and desirable. Pkt. 3 cts., 1/2 ounce 10 cts.



Nos. 92-94-93

96 Winter Radishes Winter Radishes should be planted about August 1. If planted in early spring they will run to seed without forming roots. Each packet will contain several varieties, including California White, Chinese Rose, Black Spanish, etc. Pkt. 3 cts., 1/2 ounce 10 cts.



Custard and Crookneck Squashes

99 Prolific Orange Marrow A very popular old variety for fall and early winter use. Skin light orange; flesh deep yellow, rich, and sweet. Very prolific. Pkt. (20 to 25 seeds) 3 cts., ounce 15 cts.

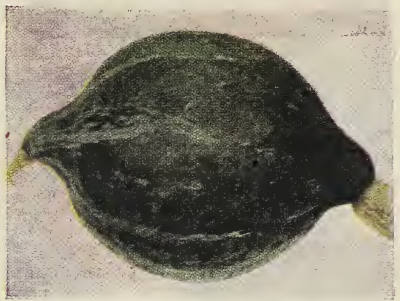


Spinach

Squash

97 Bush Golden Custard Also called Early Yellow Bush. The skin and flesh are golden yellow. Pkt. 3 cts., 1/2 ounce 10 cts.

98 Bush Summer Crookneck The best-known bush Squash. The shape is shown in illustration. Skin and flesh deep golden yellow. Excellent quality. One of the best. Pkt. 3 cts., 1/2 ounce 10 cts.



Genuine Hubbard Squash

100 Genuine Hubbard For main fall and winter crop the Hubbard stands at the head of the list. Dark green, hard, warted shell and solid golden yellow flesh of highest quality. Pkt. (25 seeds) 3c., oz. 20 cts.

101 Mammoth Chili A mammoth exhibition Squash. Has been grown to weigh more than 200 pounds. Skin and flesh orange-yellow, of very good quality. Pkt. (15 to 20 seeds) 3 cts., ounce 20 cts.

102 Salsify Vegetable Oyster. Why don't you grow Salsify? It is one of the most delicious and nutritious of vegetables. In soup it has a delicious oyster flavor. Also fine if fried in butter, or boiled and made into fritters. It is perfectly hardy and should remain in the garden for spring use. The seed-crop was very short last season. Pkt. (about 250 seeds) 3 cts., 1/2 ounce 15 cts.

103 Spinach Bloomsdale. Spinach is the most useful vegetable grown for greens. For a continual supply, the seed should be sown at intervals from early spring until autumn. The Bloomsdale has thick, dark green, wrinkled leaves. A favorite with market-gardeners, and equally desirable for home use. There is no more nutritious food grown than Spinach. Pkt. 3 cts., ounce 10 cts.



Salsify

Tomatoes

Each 3-cent packet of Tomato will contain 200 to 300 seeds.



Sparks' Earliana

104 Sparks' Earliana There are a number of Tomatoes that are claimed to be the earliest, but we have never found any earlier than Sparks'. The fruit is of medium size, always smooth, bright scarlet and of excellent quality. But no extra-early Tomato compares in size and quality to the later main-crop varieties. Pkt. 200 seeds 3 cts., 1/4 ounce 10 cts.

105 New Stone The standard main-crop variety. The fruit is of uniformly large size, smooth, very solid, and of best table quality. Largely grown for canning. Not early but dependable for main crop. Pkt. 3 cts., 1/4 ounce 10 cts.



New Stone and Burpee's Matchless Tomatoes

106 New John Baer Claimed to be extra-early. Medium large, beautiful brilliant red, solid, excellent quality, and enormously productive. We believe it worthy a trial by all Tomato growers. Pkt. 200 seeds 3 cts., 1/4 oz. 15 cts.

107 Burpee's Matchless This variety is well named. It is matchless in size, form, regularity of growth, and quality. Color rich cardinal-red. Uniformly large and smooth. We do not know of a better main-crop Tomato. Pkt. 300 seeds 3 cts., 1/4 ounce 10 cts.

108 Red Rock An extraordinarily solid, smooth, bright red Tomato. A heavy producer of fine fruit of excellent quality. Very popular with canners and truckers. Pkt. 300 seeds 3 cts., 1/4 ounce 10 cts.

109 Ponderosa This is not only the largest but also the heaviest Tomato grown. Color glowing purple-crimson. Considered by many the best table variety in existence, especially by those who prefer a tomato quite free from acid. Being very solid, with few seeds, it is desirable for slicing. Pkt. (150 seeds) 3 cts., 1/4 oz. 20 cts.

Garden Turnips

Each 3-cent packet of Turnip contains 1/8 ounce, 1200 to 1500 seeds

110 Purple-Top Strap-Leaf The best known and most popular Turnip in cultivation. Needs no description. Pkt. 3 cts., 1/2 ounce 10 cts.

111 Purple-Top White Globe This is one of the handsomest and most desirable varieties grown. Very similar to the above variety except in shape, being a perfect globe-shape. For home and market. Pkt. 3 cts., 1/2 oz. 10 cts.



No. 110 Turnips No. 112

112 White Egg Forms a beautiful, egg-shaped root with thin, white skin. Flesh always firm, solid, and sweet. Pkt. 3 cts., 1/2 ounce 10 cts.

113 Golden Ball or Orange Jelly. One of the most delicate and sweetest of yellow-fleshed Turnips yet introduced. Medium in size. Uniformly smooth and solid. Keeps well and is a superior table variety. Pkt. 3 cts., 1/2 ounce 10 cts.

114 Rutabaga American Swede. Produces uniformly large, globe-shaped Turnips. Purple above ground, and yellow below. Flesh very solid, rich yellow, fine-grained, and very sweet. Largely grown for market and stock. Always solid, and will keep until late spring. Pkt. 3 cts., 1/2 ounce 10 cts.



Turnip No. 111 and Rutabaga No. 114

MISCELLANEOUS SEED

115 Extra Quality Lawn Grass

To produce a fine carpet-like lawn requires the proper blending of several varieties of grass. One variety will be brightest in early spring; another will withstand the hot, dry summer sun. Others succeed best in the shade; while still others are best for late autumn. Our mixture is made up in the proper proportions of all these varieties, including white clover.

The seed we offer is absolutely pure, clean seed, and should not be compared with the chaff so often sold in the corner grocery.

Price, large packages containing sufficient seed to mend bare places in early spring, 10 cts. Pound package, sufficient for 500 square feet, the equivalent of two to three quarts of chaffy seed, 45 cts.; three pounds for \$1.10.

116 Pure White Clover

It is often advisable to include a larger proportion of White Clover, especially in poor clay soil. Also for renovating old lawns the Clover will often take hold where other grasses fail. For this purpose we supply clean, pure seed. 1/4 lb. 25 cts., 1 lb. 85 cts.

117 Peanut Extra-Early Spanish. It is not generally known that Peanuts can be successfully grown in the North. By planting the extra-early Spanish, they mature a nice crop if planted on light, sandy soil in full sunshine. The nuts are not quite so large as the ones usually sold, but are very solid and sweet. Just what the boys will want to plant. Plant just like beans, after the soil is quite warm, usually last of May. Large pkt. 5 cts.

118 Sunflower Mammoth Russian. The best egg-producing food known for poultry. Every farmer should plant some of the seed in any out-of-the-way place at any time in May or June. Single heads will often measure 12 to 15 inches across and contain an immense quantity of seed. Hang the heads in the poultry-house, where the hens can reach them, and they will do the rest. Large pkt. about 100 seeds 3 cts., 1/4 lb. 15 cts.

119 Tobacco Connecticut Seed Leaf. A popular variety, best adapted and most generally grown in northern sections, where southern varieties do not succeed. Pkt. 1000 seeds 3 cts., 1/4 ounce 10 cts.

CENTS
PER
PACKET

In selecting the following list of Flower Seeds, we have been careful to include only varieties of easy culture that we believe will give general satisfaction. There are a thousand and one varieties of flowers, many of which require special cultural conditions requiring expert knowledge. All such varieties have been omitted as they are certain to disappoint the purchaser.

CENTS
PER
PACKET

Quality Aster Seeds

The Aster seed here offered is of the very best quality, grown for us by the most careful and trustworthy growers in America. No better Aster seed is obtainable, no matter what prices are asked for them. Last season we sold more than 300,000 packets of Aster seed. Each 3-ct. pkt. of Asters contains about 150 seeds.

121 Queen of the Market The best of the extra-early varieties, fully two weeks ahead of all others. Flowers quite large and perfectly double. Mixed colors. Pkt. 3 cts.

122 American Branching Very popular. Strong habit, 2 to 2½ feet in height. Large, perfectly double flowers on long stems. All colors mixed. Pkt. 3 cts.

123 Giant Branching Comet Large, medium-early, double flowers on long stems. Broad irregular petals. One of the best types. All colors mixed. Pkt. 3 cts.

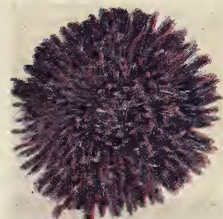
124 New King A distinct new type. Very large double flowers, with long, narrow, folded, needle-like petals. One of the best of the newer types. Pkt. 3 cts.

125 Ostrich Plume A fine type of Giant Comet, having very long, irregularly twisted petals, producing a plume-like effect. Flowers very large, on long stems. All colors mixed. Pkt. 3 cts.

126 Extra Quality Mixed Asters A mixture of all the above and several other types. If you order only one packet of Aster seed, select this one. Pkt. 3 cts., ¼ ounce. 20 cts.



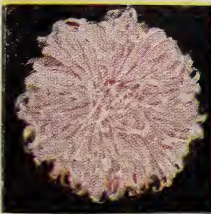
Giant Comet



New King



American Branching



Ostrich Plume

127 Sweet Alyssum Little Gem. Dwarf, compact habit. Blooms early spring to frost. Excellent for bordering beds or walks; also desirable for hanging-baskets or vases. Flowers pure white, fragrant, completely covering the plants. Pkt. (600 to 800 seeds) 3 cts.

128 Baby's Breath Gypsophila. Easily grown. Annuals, 12 to 15 in. high. Flowers are pure white, very small, star-like, and produced in feathery sprays. Pkt. (600 to 800 seeds) 3 cts.

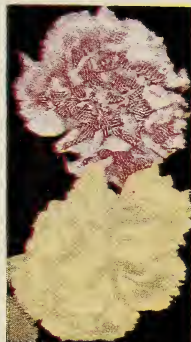
132 Calif. Poppy Eschscholtzia. Very handsome, fernlike, single, showy flowers thruout the summer in orange, yellow, crimson and maroon. Pkt. (600 to 800 seeds) 3 cts.



California Poppy

136 Carnations, Marguerite

These lovely, fragrant Carnations produce fine double flowers from seed sown in the garden early in the spring. The plants begin to bloom in about four months. When well started, the young plants should be transplanted to stand twelve inches apart. They are quite hardy, flowering the first season until late in the fall and can be potted for winter blooming. Mixed colors. Pkt. (250 seeds) 10 cts.

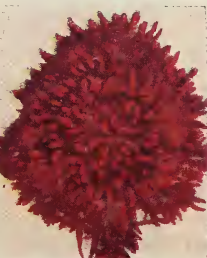


Carnation

133 Calendula Scotch Marigold. An old popular flower, of easy culture, blooming continually until frost. Double flowers, in all shades yellow. Pkt. 100 seeds 3 cts.

134 Calliopsis or Coreopsis. One of the leading plants for the flower garden, making a very showy border plant, producing flowers in nearly every shade of yellow, orange, crimson, red and brown. Sow where they are to remain, and thin to one foot apart. Pkt. (500 to 600 seeds) 3 cts.

135 Candytuft One of our most useful and popular annuals. Completely covered with clusters of flowers that are esteemed for bouquets. Also grown as border plants. All varieties mixed. Pkt. (500 seeds) 3 cts.



Chinese Wool Flower

129 Double Balsam Lady's Slipper. Neat, symmetrical, well-branched, delicate-colored, wax-like flowers in profusion along branches. Blooms all summer, scarlet, white, pink, purple, bluish, spotted. Pkt. (200 seeds) 3 cts.

130 Blanket Flower Gaillardia. Very showy annuals of easy culture. Blooms from early spring to frost. Flowers on long stems in orange, brown, bronze, maroon, and crimson. Mixed varieties. Pkt. (150 seeds) 3 cts.

131 Bachelor's Button Centaurea. One of the most popular and desirable old-fashioned garden annuals. Quite hardy, coming up each spring. Pkt. (200 seeds) 3 cts.



Bachelor's Button

137 Chinese Wool Flower A distinct form of plumed Celosia, each stem bearing beautiful ball-shaped flower heads of brilliant purplish crimson. The curled petals give the appearance of wool. Very attractive. Pkt. (250 seeds) 10 cts.

138 Cockscomb Very showy annuals with extra large, velvety flower-heads or combs, of very easy culture. Cut when partially open, and hung in a dark closet to dry, for winter decorations. Dwarf, large-flowering type. Pkt. (300 to 400 seeds) 3 cts.



Pinks

139 China and Japan Pinks

Dianthus One of the most popular and satisfactory annuals grown. They are of easy culture and comprise a large variety of types and brilliant colors. The Japanese, or Heddewigii class is remarkable for its size and gorgeous colors. Many of them are deeply fringed. They are quite hardy and with protection will winter over and bloom very freely in early spring. Our mixture contains many varieties of Chinese and Japanese sorts. Pkt. (300 to 400 seeds) 3 cts.

140 Cosmos Giant-Flowering. Very desirable, tall, graceful annuals, 5 to 6 feet high, with large, single, showy flowers from August to October. To provide a succession of flowers, we include both the new early giant-flowering and late giant-flowering varieties in each packet. They should produce an abundance of flowers from August until killed by frost. Colors, white, pink, yellow and crimson. Pkt. (150 seeds) 3 cts.



Cosmos

141 Dahlias New Single. These beautiful new single Dahlias are very easily grown from seed, and will produce an abundance of flowers in many colors the first year. After the frost kills the tops, dig up the roots and store them in the cellar. Pkt. (75 to 100 seeds) 3 cts.



Single Dahlias

143 Helichrysum Everlasting. Popular straw-flowers. Largely grown for winter bouquets. The flowers should be cut when just commencing to open and hung in a dark place, tops down, to dry. Pkt. (150 seeds) 3 cts.

142 Kochia Mexican Fire-Bush. Also called Belvedere, or Summer Cypress. Of very easy culture, soon forming perfect, symmetrical little trees, the foliage turning to fiery red in September. Splendid for hedges or as single specimen plants. Pkt. (400 to 500 seeds) 3 cts.

144 Ice Plant Mesembryanthemum. Very interesting annuals of low, trailing habit. The foliage and stems are covered with crystalline formations that glisten in the sun. Useful for hanging-baskets and vases. Of easy culture. Pkt. (500 or more seeds) 3 cts.



Four O'clocks

145 Four-O'Clock Marvel of Peru. One of the most popular and desirable annuals, of the easiest culture. Fine for hedges between the lawn and garden, or along driveways. Produce a dazzling effect. Packet (50 seeds) 3 cts., 1/2 ounce 10 cts.

146 Larkspur Annual. Quick-growing, free-flowering annuals producing pretty spikes of flowers in great abundance. A mixture of various types and colors. Pkt. (300 to 400 seeds) 3 cts.

147 Nigella Love-in-a-Mist. Compact, free-flowering annuals with pretty, white and light blue flowers nestled among the feathery foliage. Pkt. 3 cts.

148 Amaranthus Love-Lies-Bleeding. Rapid-growing annuals; ornamental foliage; long, drooping panicles of flowers. Of very easy culture. Pkt. (500 or more seeds) 3 cts.



Larkspurs

149 Marigold Tall African. Has very large double, yellow and orange flowers. The French type is more dwarf, with smaller flowers. Each packet contains both varieties, which may be separated when transplanting. Pkt. (150 or more seeds) 3 cts.

150 Dwarf Marigold Legion of Honor. Quite dwarf in habit; fine for borders. Pretty single brown and yellow flowers all summer. Pkt. (about 150 seeds) 3 cts.

151 Mignonette Fine for cut-flower work, owing to its delightful fragrance. For a continual supply, plant at intervals. Very difficult to transplant. Several varieties, mixed. Pkt. (500 or more seeds) 3 cts.

152 Scabiosa Mourning Bride. Also called "Pin-Cushion Flower." Easily grown, desirable annuals, blooming until frost. Pkt. (150 seeds) 3 cts.

Nasturtiums

Everything considered, we place the Nasturtium at the head of the list of annual flowers. They are so easily grown, require so little care, and produce their cheerful flowers so abundantly throughout the entire season.

153 Dwarf The dwarf varieties are the most desirable for bedding or borders, where space is limited. Our mixture comprises many of the best varieties. Pkt. (40 to 50 seeds) 3 cts., ounce 20 cts.

154 Lilliput A miniature type of Dwarf Nasturtiums, of many beautiful varieties and brilliant colors. Pkt. (about 20 seeds) 3 cts.

155 New Ivy-leaved A desirable new type of climbing Nasturtiums having ivy-like foliage and brilliant scarlet flowers. Very desirable. Pkt. (20 to 25 seeds) 3 cts.

156 Tall or Climbing For trailing over porch lattice or arbors, or for covering fences or unsightly places, also for vases, we consider the tall varieties most desirable. There is also a greater variety in colors, including the brilliant Lobbianum type. Mixture, including all types. Pkt. (50 seeds) 3 cts. ounce 15 cts.



African Marigolds



Nasturtiums



Giant Pansy

157 Giant Pansies A superb mixture of many choicest, Giant flowering varieties, including white, yellow, pink, red, maroon, purple, etc., in various combinations bordered, blotched, etc. **Pkt. (200 seeds) 10 cts.**

158 Petunia, Giants of California We have been fortunate in securing a supply of seed of these marvelous flowers. We saw them in bloom and know that they are the genuine Giant Strain including many varieties and colors, a large percentage being of the beautiful ruffled type. Usually sold at 25c per packet. **Our price, packet (150 seeds) 10c.**

159 Petunia Hybrida. For an abundance of large showy flowers throughout the entire summer nothing can compare with the common Petunia. You'll like it in your garden. **Packet (about 1,000 seeds) 3 cts.**



California Giant Petunia

160 Phlox Drummondii Very brilliant, showy annuals that should have a place in every garden. Seed sown in early spring will soon produce a fine display of many bright colors. **Pkt. (250 seeds) 3c.**

161 Poppies For brilliant, dazzling effect, nothing can equal the Poppy. Sow the seed very early in the spring where they are to bloom, as they cannot be transplanted. Many types and colors, both single and double. **Mixed packet (about 1,000 seeds) 3 cts.**

162 Painted Daisy Showy annuals of easy culture. Daisy-like flowers, the petals having the appearance of being painted. **Pkt. (200 seeds) 3 cts.**



Poppies

163 Rose Moss Portulaca. Low-growing annuals of easy culture, requiring bright sunshine, producing a dazzling carpet-like effect all summer long. **Packet (1,000 seeds) 3 cts.**

164 Snapdragons Antirrhinum. Hardy annuals. Very popular, producing many spikes of very attractive flowers throughout the summer. Fine for cut-flowers. **Packet (about 500 seeds) 3 cts.**

165 Ten-Weeks' Stocks Nothing can excel the Stocks in beauty and fragrance. Flowers large and double. Bloom about ten weeks after sowing seed. Mixture, including the popular "Cut-and-Come-Again." **Packet (150 seeds) 3 cts.**



Sweet Pea

166 Sweet Peas For exquisite fragrance and distinctive beauty the Sweet Pea has no rival. More than two hundred thousand packets were ordered last season, requiring more than a ton of seed. We do not list them in separate varieties, but make up a mixture of all the best large-flowering or grandiflora varieties in the proper blending. Cultural instructions on each packet. **Pkt. (about 100 seeds) 3 cts., ounce 15 cts.**

167 Spencer Sweet Peas New Giant Ruffled or Orchid-flowering type. Flowers somewhat larger than the grandiflora, the petals being ruffled. Finest mixture. **Pkt. (about 50 seeds) 3 cts., 1/2 oz. 15c.**

168 Dwarf Cupid Sweet Peas An entirely distinct type of Sweet Peas only 8 to 10 inches high. Suitable for borders. Flowers large and fragrant. Choice mixture. **Packet (50 to 60 seeds) 3 cts.**

169 Verbenas Of low spreading growth, forming a carpet of bright colors when in bloom. Begin to bloom in July, and continue until frost. Choice mixture, including the large-flowering type. **Packet (about 200 seeds) 3 cts.**



Giant Zinnias

170 Giant Zinnias The Zinnia, or "Youth and Old Age," requires little care and blooms freely throughout the season. Produce very large, double flowers as compared with the common type. **Packet (75 seeds) 3 cts.**

Climbing Vines

171 Balloon Vine Pretty climbing vines, having curious balloon-like seed-pods. **Pkt. (40 to 50 seeds) 3 cts.**

172 Cypress Vine Fern-like foliage and pretty, star-shaped flowers. 6 to 8 feet. **Pkt. (about 40 seeds) 3c.**

173 Hyacinth Bean Rapid climber; trusses of flowers resembling the Hyacinth. **Pkt. (40 to 50 seeds) 3c.**

174 Japanese Morning-Glory Very rapid climber, very large, attractive flowers of rare beauty. **Pkt. (50 seeds) 3 cts.**

175 Morning-Glory Too well known to need description. Splendid mixture. **Pkt. (150 seeds) 3 cts.**



Foxglove

Hardy Perennials

176 Canterbury Bells, or Campanula favorite. Showy, large "bellflowers" in greatest profusion. **Pkt. (500 or more seeds) 3 cts.**

177 Foxglove, or Digitalis. Tall spikes of very showy flowers. Should be in every garden. **Pkt. (500 seeds) 3c.**

178 Hollyhock Old-fashioned, tall, dignified flowers for background planting. Mixed. **Pkt. (about 50 seeds) 3 cts.**

179 Sweet May Pinks "Clove" or Scotch Pinks. Every garden should have a few clumps of these flowers. All colors, mixed. **Pkt. (150 seeds) 3 cts.**

180 Sweet William Very easy culture, requiring little attention. Mixed colors. **Pkt. (250 seeds) 3 cts.**

SUMMER-FLOWERING BULBS AND ROOTS

In this department we have selected an assortment of popular summer-flowering bulbs and roots. Much of this stock we grow ourselves at our Rocky River Nursery. Others we contract for with reliable growers in large quantities. Our prices will be found to be very reasonable, considering the quality of stock we handle. Cultural instructions will be furnished with each order.



King Humbert

Cannas **Large-Flowering.** For beds on the lawn, where a tropical effect is desired, we know of no plant so satisfactory. They keep the yard and lawn ablaze with color. There are a hundred or more varieties in cultivation. We have selected just a few of the best and most distinct types and colors.

Two Best New Cannas

301 King Humbert Four feet. New, handsome bronze foliage and immense bright orange-scarlet flowers. Very fine bloomer. 15 cts., 2 for 25 cts., 12 for \$1.25.

302 Queen Helen Yellow Humbert. A wonderful new sport from King Humbert. Foliage green. Large golden-yellow flowers, spotted red. 15 cts., 2 for 25 cts., 12 for \$1.25.

303 The two best Cannas for 25 cts.

Large Flowering Cannas

304 California 4 feet. Orange-salmon, with yellow margins.

305 Crimson Bedder 3 feet. Intense crimson-scarlet. One of the very best Cannas.

306 Florence Vaughan 4 feet. Golden-yellow flowers, dotted red.

308 Madam Crozy

307 Hungaria 3½ feet. Very large flowers; color clear bright pink.

309 Wyoming 4½ feet. Magnificent large orange flowers and bronze foliage.

Price of above 6 cannas 10 cents each, any 3 for 25 cts., 12 for 90 cts. **310** The set of 6-varieties for 50 cts.



Queen Helen

Quality Dahlias

It is useless to attempt to keep pace with the development of the hundreds of new varieties of Dahlias that are being introduced. In accordance with our established policy we have selected just a few of the very best varieties in the various types, as we believe this plan will be most satisfactory to our patrons.

CACTUS DAHLIAS

311 General Buehler Velvety maroon sometimes tipped white. Very handsome. 15 cts.

312 Rheinkoenig Ideal, large pure white. True cactus type. 15 cts.

313 Country Girl Large pure golden-yellow. See illustration. 15 cts.

DECORATIVE DAHLIAS

314 Kalamazoo Large yellow. Each petal tipped pure white. 15 cts.



Show Dahlia

315 Gustav Doazon Very large, full double brilliant orange-scarlet. 15 cts.

Very large, full double

316 Henry Patrick Large double, pure snow white. A grand variety. 15 cts.



Cactus Dahlia

SHOW DAHLIAS

317 Arabella Primrose, shaded delicate lavender-pink. Very double. 15 cts.

318 Manhattan Beauty Golden-yellow, tipped carmine. 15 cts.

319 Red Warrior Large, double, brilliant cardinal-red. 15 cts.

POMPON DAHLIAS

320 White Dove Small very double pure white flowers in great profusion. 12 cts.

321 Fireball Small double scarlet. A veritable ball of fire. 12 cts.

NEW DOUBLE PEONY DAHLIAS

322 D. Van Rystem Flowers large, perfect peony form. Color delicate silvery mauve-pink. Sold last season at 75 cts. Our price, 20 cts.

323 The above set of 12 choice named Dahlias for \$1.50.

324 Oxalis "Shamrock" Pretty summer flowering bulbs, fine for bordering beds or for pot culture and hanging baskets. The foliage closely resembles the Irish Shamrock. Winter the bulbs same as gladioli. 15 bulbs for 10 cts., 50 for 25 cts.



Pompon Dahlia



Decorative Dahlia

GLADIOLI BULBS

The most useful and popular of all summer-flowering bulbs. They are so easily grown, and are so inexpensive that every home should have an assortment. They are one of our specialties. We have more than half a million blooming bulbs ready to supply the demand, and our prices will be found very reasonable, considering the quality of the bulbs. All named Gladioli will be 1st size bulbs carefully labeled. Winter the bulbs in the cellar like potatoes.

Best Six New Gladioli



Mrs. Pendleton

326 Mrs. Frank Pendleton One of the most exquisitely colored, and finest formed Gladioli in existence; also one of the largest. Color delicate blush-pink, with large, brilliant crimson blotches on lower petals. Extra fine. Each 10c., 6 for 50c.

327 Niagara A charming variety. Flowers very large, delicate cream-yellow, splashed with carmine-rose in the throat. Each 10 cts., 6 for 50 cts.

328 Panama A grand new variety, which evokes words of praise wherever exhibited. Flower and spike very large. Color rich lively pink. Each 10c., 6 for 50c.

329 Peace A grand white flower, of large size, with delicate lilac feathering on lower petals. Splendid tall, graceful spikes. Each 10 cts., 6 for 45 cts.

330 Schwaben Very vigorous, producing tall spikes with fifteen to twenty large flowers. The best yellow to date. Clear canary, shading to soft sulphur-yellow. Each 10 cts., 6 for 45 cts.

331 War The largest and best of the dark reds. Extra-large spikes. Deep blood-red, shaded maroon. Sure to please. Each 10 cts., 6 for 45 cts.

332 Set of Six Best Gladioli for 50 cts.



Schwaben

Eight Most Popular Named Gladioli

333 America Unquestionably the most popular gladiolus in existence. Immense spike. Color delicate soft pink. 5 cts., 6 for 25 cts.

334 Chicago White A desirable new variety. Very early. White with lavender markings. 5 cts., 6 for 25 cts.

335 Halley Extra early; salmon-rose. Lower petals blotted creamy-white. 6 cts., 6 for 30 cts.

336 Independence Deep rose-pink with darker red throat markings. Splendid large spike. 5 cts., 6 for 25 cts.

337 Mrs. Francis King Brilliant vermilion-scarlet with irregular light and dark shadings. One of the best. 5 cts., 6 for 25 cts.



Panama

338 Primulinus Hybrid. A distinct new extra early type from Africa. Slender spikes. Colors in delicate fawn, salmon, orange, etc. 5c., 6 for 25c.

339 Princeps Rich crimson-scarlet, with magnificent large white blotch on lower petals. Flowers are very large and fine as an Amaryllis. 8 cts., 4 for 30 cts.

340 Sulphur Queen Pure canary-yellow with distinct crimson markings on lower petals. One of the best yellow varieties. 5 cts., 6 for 25 cts.

341 For 35 cts. We will mail the set of 8 varieties, first size blooming bulbs, but not labeled.

Four Sets for \$1.25.

Superfine Mixed Gladioli Bulbs

A splendid mixture made up from the above and many other choice named varieties. Big values where a choice assortment is wanted at a nominal expense. This is not a cheap mixture as there is not a poor variety in it.

342 1st Size One and 1/8 to 1 1/2 inches and up in diameter. 12 for 35 cts., 50 for \$1.25. **343 2nd Size** About 1 inch in diameter. Every bulb guaranteed. 12 for 25c, 50 for \$1.00.

344 Quality Collection of Choice Named Gladioli

This splendid collection contains 15 carefully selected new and popular named varieties. All strong one year old bulbs 3/8 to 7/8 inch in diameter. Every bulb guaranteed to bloom, and at the same time grow to 1st size bulbs, worth three times what you pay for them. Anticipating a heavy demand for this collection, we have grown more than a half million bulbs. A rare opportunity to secure a choice collection at a nominal cost. Cultural instructions with each collection. Bulbs will not be separately labeled. Price 25 Cents Postpaid, 5 Collections for \$1.00.

345 Golden Yellow Calla Lily Elliotiana. We have been fortunate in securing a quantity of bulbs of this rare flower. Flowers are large, rich golden yellow. Foliage green, spotted white. A splendid pot plant. Mammoth blooming bulbs, 40 cts. each.

Tuberose

346 Double Dwarf Pearl No flower is more fragrant than the Tuberose. It is of very easy culture, producing tall spikes of fragrant, white flowers in August and September. Extra large first size bulbs 8c, 2 for 15c, 6 for 40c.



Double Tuberose



Gladiolus

HARDY HERBACEOUS ROOTS

No home is complete without an assortment of hardy roots. They require little attention and increase in size and beauty each year. Everything listed on this page is perfectly hardy, and our prices are reasonable when quality is considered.

Butterfly or Orchid-Flowering Iris ("Lilies of France")

Very popular, old-fashioned, hardy garden favorites, requiring little attention. Splendid for permanent borders along the driveway or edge of shrubbery. We have selected four of the most distinct varieties as described below.



Butterfly Iris

351 Mrs. H. Darwin Large, handsome flowers. Clear waxy white, lower petals veined violet.

352 Honorabilis Standards golden yellow, falls rich mahogany. Very effective.

353 Mme. Chereau Pure white, broadly margined with clear blue. Very beautiful.

354 Mandraliscae Rich lavender-purple. Very large.

Price of above 4 Butterfly Iris, 10 cents each, 3 for 25 cents.

355 Set of 4 Butterfly Iris not labeled, 30 cts.



Japanese Iris

Oriental or Siberian Iris

360 Snow Queen Narrow grass-like foliage and an abundance of delicate graceful flowers on long stems. White, yellow blotch. 15 cts.

361 Royal Purple Same style with rich purple flowers and yellow base. 12 cts.

362 The two Oriental or Siberian Iris for 25 cts.

Japanese Iris

Kampferii. The largest of all the Iris family. Flowers 6 to 8 inches across on stiff upright stems; 3 to 4 ft. high. Hardy. Bloom throughout July.

363 Gold Bond Semi-double, 6 petals. White, yellow band. 15 cts., 2 for 25 cts.

364 Purple and Gold Violet-purple. Large semi-double. 15 cts., 2 for 25 cts.

365 The two Beautiful Japan Iris for 25 cts.

Yellow Day Lilies (Hemerocallis)

370 Middendorffii Dwarf habit, with clusters of golden yellow flowers in May and June. 15 cts.

371 Luteola Two and one-half feet high. Large orange-yellow flowers in July and August. 15 cts.

372 The two varieties for 25 cts., postpaid.

Lily of the Valley

Universally admired for their dainty little pure white bell shaped flowers and exquisite fragrance. Easily grown, perfectly hardy everywhere, preferring a moist shady location. We have 150,000 fine Holland grown plants ready to fill your orders. 3 for 15 cts., 12 for 50 cts., 50 for \$1.50, 100 for \$2.75.



Yellow Day Lily

Four Best Chinese Peonies

First of all in the list of hardy plants for size, beauty and ease of culture. Should be in every garden in the land. There are hundreds of varieties, but these are the very best.

Lily of the Valley

381 Duchesse de Nemours Sulphur white, changing to pure white. One of the most profuse blooming varieties. 30 cts.

382 Felix Crousse Large round perfectly double; deep crimson with cardinal shadings. Considered the best red to date. 60 cts.

383 Festiva Maxima Largest and most popular white. Extra early, very double, center petals slightly tipped crimson. 35 cts.

384 Mons. Jules Elie The peerless pink. One of the largest, handsomest, most lasting and satisfactory peonies in existence. 65 cts.

385 Set of four best peonies for \$1.75



Hardy Phlox

Hardy Garden Phlox

One of the most desirable classes of hardy plants for the garden or lawn. Once planted they require no further attention, increasing in size from year to year.

391 Athis Large panicles, bright salmon-rose. Of strong vigorous habit.

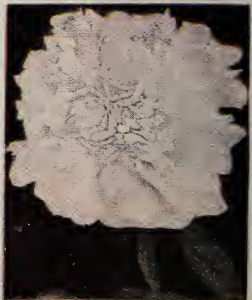
392 Bridesmaid Blush-white with brilliant red eye. Dwarf habit; very fine.

393 M. P. Langier Probably the best bright-red variety, quite distinct.

394 Pantheon The peerless pink. Extra strong grower, pure bright pink.

395 Von Lassburg The best pure white. Snow white panicles.

15 cents each. 396 Set of 5 not labeled, 50 cents.



Peonies

HARDY FLOWERING SHRUBS

Every home should be surrounded by a carefully selected assortment of hardy shrubs. By careful selection a continual succession of flowers may be had throughout the season. Once established they require little attention, increasing in size and effectiveness from year to year. The following list has been selected with great care, and contains only varieties of real merit. The stock we handle is strong one and two-year-old, field-grown, dormant stuff. 12 to 18 inches high. Cut back for packing.



Double Althea

the corners of their handkerchiefs. Double, velvety brown flowers in June and July. 4 to 5 feet. Each 20 cts., 2 for 35 cts.



Bush Honeysuckle

the ground under their



Lilac

430 **Snowball** *Viburnum Opulus*. Well-known, old favorite shrubs, covered in May and June with great white balls of snow-white flowers. Height 5 to 6 feet. Each 15 cts., 2 for 25 cts.



Bridal Wreath

Double Althea *Rose of Sharon*. Desirable hardy shrubs or small trees, easily grown, and forming symmetrical small trees 6 to 8 feet high; also grown as flowering hedges. Large, showy, double flowers in abundance from July to October. We carry them in two colors. 401 **Double White**, each 20 cts. 402 **Double Red**, each 20 cts. 403 The two for 35c.

404 **Japanese Barberry** *Berberis Thunbergii*. Decidedly the most desirable and useful shrub in cultivation. Of neat, graceful, dwarf habit, unequalled for ornamental hedges, for bordering clumps of larger shrubs, or grown as single specimens. More extensively planted than any other shrub. The fragrant yellow flowers are followed by scarlet berries that remain on the plants all winter. Is recommended by the U. S. Government. We handle only two-year, field-grown plants, 12 to 18 in. high. Each 10cts., 6 for 50 cts., \$6.00 per 100.

406 **Calycanthus** *Sweet Shrub*. This is the old-fashioned fragrant "Shrub" that the children tie in



Calycanthus

408 **Deutzia** *Pride of Rochester*. A Japanese shrub of vigorous habit, 6 to 7 feet. An abundance of double blush-white flowers along the branches in July. Each 15c, 2 for 25c.

410 **Forsythia** *Golden Chain*. 6 to 8 feet. Vigorous habit and a profusion of golden-yellow drooping flowers in early spring, before the leaves appear. Graceful curving branches. Each 15 cts., 2 for 25 cts.

412 **Hydrangea** *Paniculata Grandiflora*. One of the most popular and best known of all the flowering shrubs. Immense panicles of white flowers from July to September, changing to greenish-pink. Grown as single specimen plants, in clumps with other shrubs, or as ornamental hedges, it will always give satisfaction. Price 15 cts., Extra strong plants 25 cts.

415 **Hills of Snow** *Hydrangea Arborescens Grandiflora*. The most valuable shrub introduced in recent years, surpassing all others in the size and profusion of its magnificent flower-heads, which are similar to the old Snowball in appearance, but much larger in size. The branches literally bend to a load of monstrous, snow-white flowers. To prove its hardiness, we saw it in full bloom around Muskoka Lakes in northern Canada. Succeeds in either shade or full sunshine. Just the shrub to plant out in front of a north porch. Price 25 cts. each. 5 for \$1.00.

418 **Bush Honeysuckle** *Lonicera Tartarica*. 4 to 6 feet. Neat habit, glossy green foliage, and pretty little pink flowers in pairs, ("Twin Honeysuckle"), followed by bright red berries. Each 20 cts.

420 **Persian Lilac** Dwarf growing, with slender branches and narrow leaves. Blooms much earlier and more freely than the common lilac. 20 cts. 3 for 50 cts.

Mallow Marvels One of the most valuable introductions in recent years. Grows 5 or 6 feet high, producing in August and September an abundance of mammoth flowers 6 to 8 inches across. Always attracts attention. Should have been listed on Herbaceous page as the tops die down and should be removed. 423 Small roots 15 cts. 424 Extra heavy roots 25 cts.

425 **Mock Orange** Very popular shrubs growing 8 to 10 feet high, with a profusion of large white flowers in June and July. 15 cts. 2 for 25 cts.

432 **Snowberry** *Symphoricarpos Racemosus*. Neat shrubs of slender medium growth, having pretty, small, pink flowers in June, followed by waxy-white berries in autumn and early winter. 3 to 4 feet. Each 15 cts., 2 for 25 cts.

434 **Spirea** *Anthony Waterer*. A very desirable perpetual blooming shrub forming neat, round bushes two feet high, with large, flat corymbs of rosy crimson flowers from June to September. Useful for bordering clumps of large shrubs, or planting around porches. 15c each, 2 for 25c, doz. \$1.

436 **Bridal Wreath** *Spirea Van Houttei*. One of the most beautiful and graceful ornamental shrubs in the entire collection. Very largely used in all landscape work. For ornamental hedges, in clumps with other shrubs. In universal demand. 15c, 2 for 25c, 5 for 50c, 12 for \$1.

437 **Weigela Rosea** A beautiful shrub that blooms in May, June and July. The flowers are produced so profusely as to almost entirely hide the foliage. Price 20 cts.



Weigela

HARDY ROSES

No other plant can take the place of the Rose. If you can afford nothing else, you must have Roses. We sell annually 75,000 to 100,000 Hardy Roses of the various classes. We do not handle the small Roses grown in little pots in greenhouses. Our Roses are all dormant, field grown, and will bloom freely the first year. Tops cut back before shipping.

Hardy Roses are very scarce this season, with wholesale prices more than double last season's prices, and we are advised prices will be still higher next year.



Hybrid Perpetual

Hybrid Perpetual Roses

These are the beautiful "June Roses," so universally popular. They are the largest and richest in coloring of all Roses and perfectly hardy everywhere. There are a hundred or more varieties, but we confine our list to the best five, as follows:

451 Frau Karl Druschki **White American Beauty.** Very large; pure snow-white; very free, perpetual bloomer. A grand Rose. **50 cts.**

452 General Jacqueminot The famous red garden Rose. Large, double, brilliant crimson, fragrant flowers. Popular everywhere. **45 cts.**

453 Mrs. John Laing An exceptionally hard-some Rose, Vigorous; fine habit. Color, soft, satiny shell-pink. Very double and fragrant. **45 cts.**

454 Paul Neyron The largest Rose in existence. Mammoth, full, double, fragrant flowers of bright deep rose. **60 cts.**

455 Prince Camille de Rohan Very dark velvety crimson, changing to intense maroon. Darkest red variety. **50c.**

456 For \$2.00 We will send prepaid the above set of 5 Hybrid Perpetual Roses and guarantee satisfaction.



Climbing American Beauty

458 Climbing American Beauty

diameter, on long stems, each being surmounted by one splendid climbing Rose that produces flowers in clusters. Absolutely hardy everywhere, vigorous climber, with glossy green foliage, not subject to mildew. The real American Beauty Color. Strong field grown plants. **30 cts.**

This grand New Rose produces large double flowers 2 1/2 to 3 inches in diameter unlike all other climbing Roses that produce flowers in clusters. Absolutely hardy everywhere, vigorous climber, with glossy green foliage, not subject to mildew. The real American Beauty Color. Strong field grown plants. **30 cts.**



Thousand Beauties

459 Thousand Beauties Entirely distinct from all other Climbing Roses. The flowers are produced in immense clusters. The individual flowers of graceful and elegant form. Color delicate soft pink when first open, changing to deep carmine. Should be included in every Rose collection. **30 cts.**

New Perkins Climbing Roses

This is the most desirable type of Climbing Roses to plant. They are far superior to the Crimson Rambler class in every way, being more vigorous, and not subject to mildew, retaining their glossy green foliage throughout the season. For profusion and quality of flowers they have no equal.

460 Dorothy Perkins The original "Perkins" Rose, and the most popular pink climber. Clear shell-pink, double; immense clusters. **25 cts.**

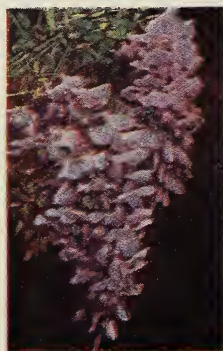
461 Excelsa **Crimson Perkins.** Brilliant crimson, double flowers in immense clusters. Better in every respect than the popular Crimson Rambler. **25 cts.**

462 White Dorothy Perkins A magnificent pure white climbing Rose, identically like Dorothy Perkins, except in color. **25 cts.**

463 ABOVE SET OF THREE PERKINS CLIMBING ROSES FOR 60 CENTS



Dorothy Perkins



Chinese Wisteria

Hardy Climbing Vines

Nothing adds more to the attractiveness of any home than a few well-selected hardy vines. For porches, arbors, etc., and for hiding outbuildings and unsightly places, they are indispensable. We list only a few of the most desirable varieties.

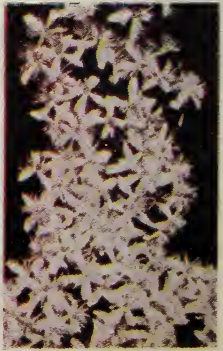
466 Ampelopsis **Veitchii or Japan Ivy.** Popular hardy climbing vine that clings to and completely covers any wall. 1-year vines, each **25 cts.**

467 Clematis **Paniculata or "Snowbank".** Sweet-scented Japanese Clematis. Completely covered in September with a mantle of snow-white flowers. **20c ea.**

468 Honeysuckle **Hall's Japan.** Very rapid climber. Evergreen foliage, creamy-white, fragrant flowers from June to August. Each **20 cts., 21 or 35 cts.**

469 Honeysuckle **Scarlet Trumpet or Sempervirens.** Quite distinct from Hall's Japan. Trumpet shaped scarlet flowers in clusters. Ea. **15c 2 for 25c.**

470 Chinese Wisteria Hardy, rapid-climbing vine, having large clusters of light purple, very fragrant flowers in June and July. 2-year vines **25c.**



Clematis Paniculata

SMALL FRUITS

Every home garden should have a well selected assortment of Small Fruits. Our space being limited, we have selected just a few of the most desirable varieties which we are prepared to supply in strong, one year old, field-grown plants.



Currant

Hardy Grape Vines

476 **The Popular Concord** No item that we list in this catalogue will give greater satisfaction than Grape Vines. Owing to extreme scarcity, and unreasonably high prices, we have decided to offer only the popular Concord, of which, fortunately, we have secured a very fine supply. There are probably five times as many Concord planted as of all other varieties combined, because it is the best all around grape in existence. **Strong well rooted one year old vines. 15 cts., 2 for 25 cts., 12 for \$1.25**



Concord Grapes

Currants & Gooseberries

No garden is complete that does not contain a few Currant and Gooseberry bushes. They will repay you well for the little space they occupy. Where is the housewife who does not like to make the finest of all (currant) jelly. The following are the most satisfactory varieties, which we supply at nominal prices.

- 481 **Currant** **Fay's Prolific.** The leading market Currant. Large, red berries on long bunches. Excellent quality; very prolific and easily picked. **Each 15 cts., 2 for 25 cts.**
- 482 **Currant** **Pres. Wilder.** Large clusters of brilliant red berries of rich, mild flavor. Wonderfully productive. **Each 15 cts., 2 for 25 cts.**
- 483 **Downing Gooseberry** A large, handsome, pale yellow berry of excellent quality. Robust habit, productive and free from mildew. **Each 15 cts., 2 for 25 cts.**
- 484 **Houghton Gooseberry** Enormously productive. Berries medium size, pale red. Excellent and reliable. **Each 12c. 3 for 30c.**
- 485 **For 45 cents** we will send postpaid the set of four Currants and Gooseberries. Strong plants, guaranteed to please you.

Everbearing Raspberry

- 487 **St. Regis** A splendid new early, red raspberry that is well worthy a place in every garden. A genuine, practical, profitable, productive perpetual bearing variety. It produces an abundant main crop like the common varieties. The old canes continue to produce fruit until middle of August, when they should be removed to make room for the young canes, which are already beginning to ripen fruit, continuing in increasing quantities until last of October. The berries are bright crimson of good size and excellent quality. **Strong, well rooted plants, Price, 10 cts. 3 for 25 cents. 12 for 85 cents.**



St. Regis Raspberry

Everbearing Strawberry

- 491 **Progressive** Wouldn't it be nice to be able to pick strawberries all summer? Well, that is just what you can do if you plant this new variety. It is just as easy to grow as the common varieties, will produce an abundant crop in June and then keep right on bearing all summer on the young plants. You can pick ripe Strawberries in increasing quantities from July until October. Sure to become popular when better known. Of superior quality and the only variety that will produce a crop the first year. **Price 6 for 25 cts., 12 for 45 cts., 50 for \$1.00.**



Strawberries

494 Asparagus Roots

Every home-garden should contain an Asparagus-bed. Once planted it will require little care, and there is no other vegetable you can plant that will produce a greater quantity of desirable, nourishing food from the same space. An ordinary sized bed, 6 by 10 feet, requiring 50 roots to plant, when established will furnish a daily supply for three or four persons for two months or more each season. Plant two-year-old roots and save two years' time, as compared with planting seed. We offer **Columbian Mammoth** in strong, 2-year roots, at **12 for 30 cts., 25 for 50 cts., 50 for 85 cts. Postpaid.**

- 495 **Rhubarb Roots** A few clumps of Rhubarb in a corner of the garden will furnish a continual supply of material for pies and sauces during the early summer months. **Strong roots, 4 for 25 cts., doz. 75 cts.**



Asparagus

Duchesse de Nemours

Four of the best
CHINESE PEONIES
In Existence
See Page 14

Felix Crousse

M. Jules Elie

Festiva Maxima

Flowers One-Fourth Natural Size