

C

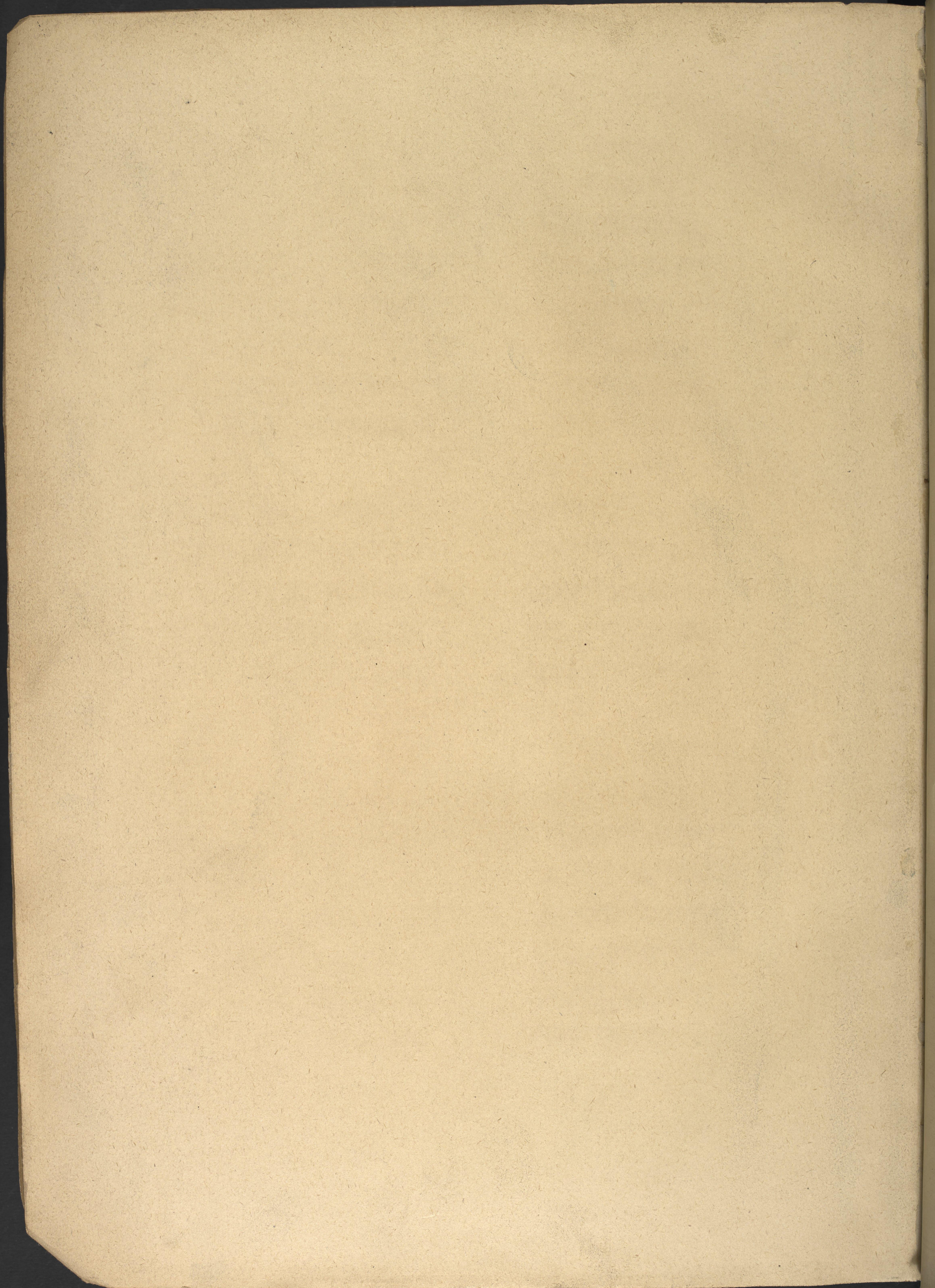
HAGIOGRAPHIA
WITH
TARGUM
& ARAB. VERS.
HEBREW

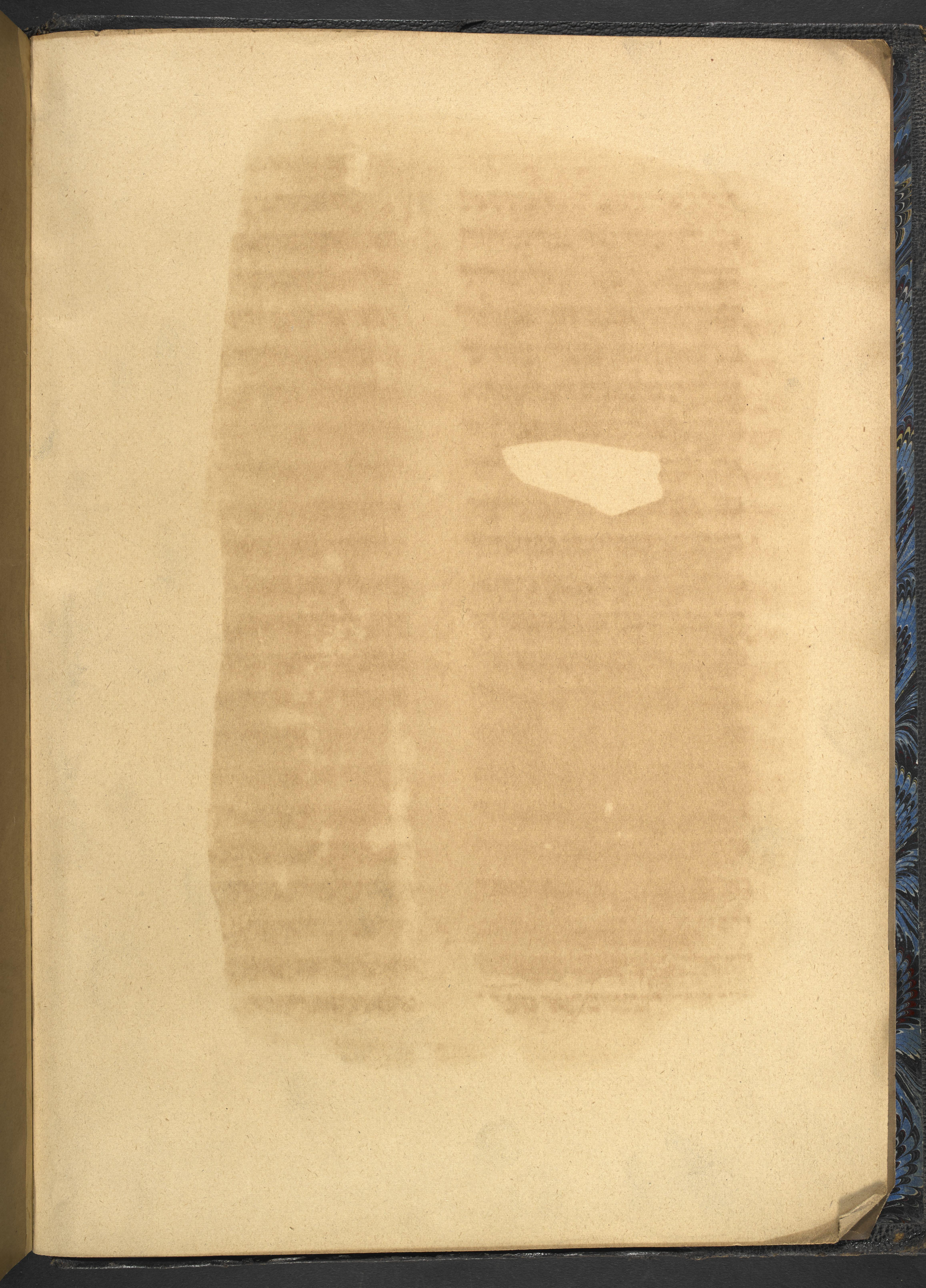
BRIT. MUS.

ORIENTAL

2375

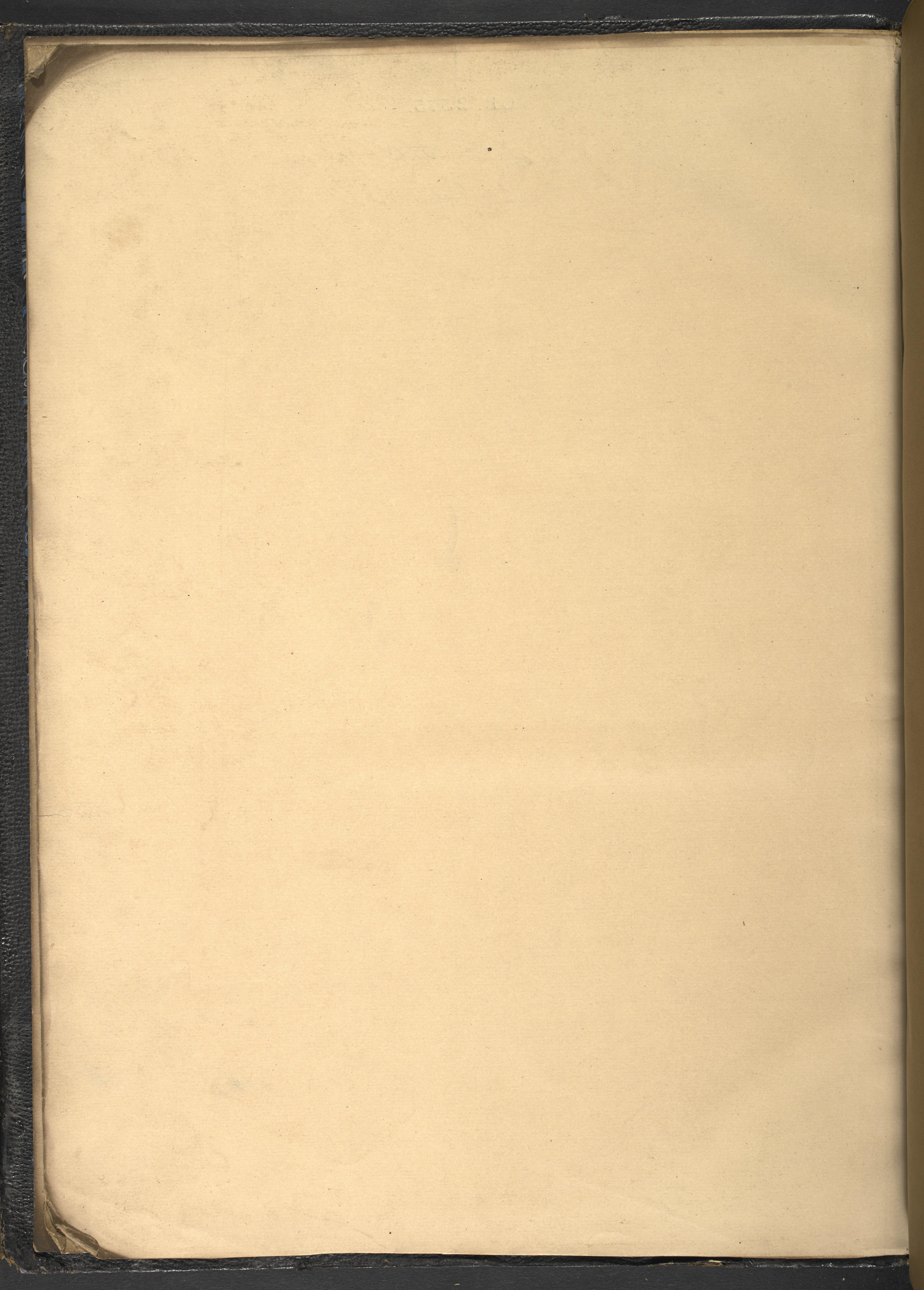






316 folia G. G. J. (Augt. 1881)

Ex. Jm.



OR. 2375.

13^t of M. W. Shepive.

23 July 1881.

~~Or. 56. d.~~

~~Or. 60. d.~~

~~OR 55 f.~~

OR 55 f

Σ:

470 f

