

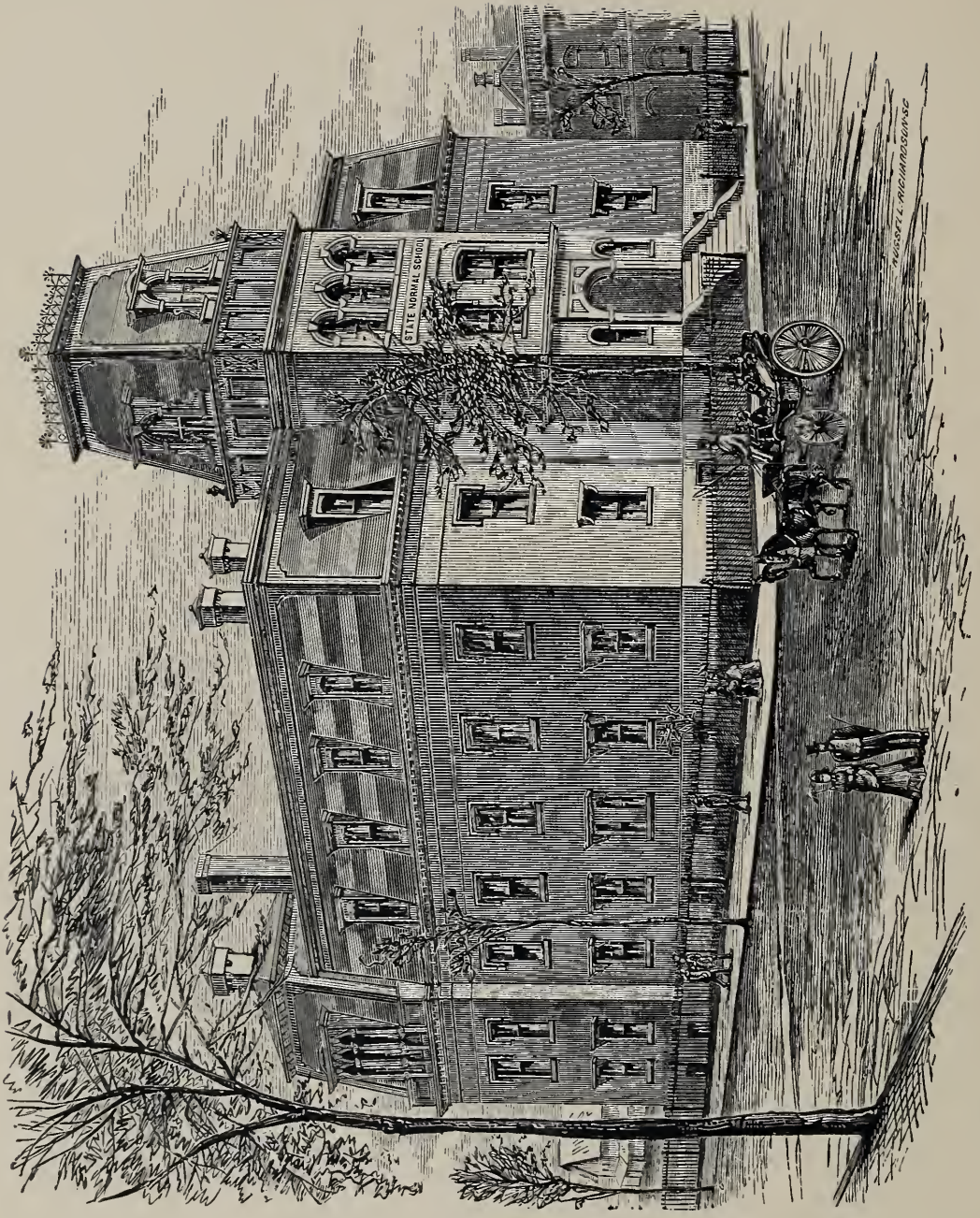
REGISTER AND CIRCULAR  
OF THE  
STATE NORMAL SCHOOL,  
SALEM, MASS.



1890-1891.







State Normal School, Salem, Mass.

REGISTER AND CIRCULAR

OF THE

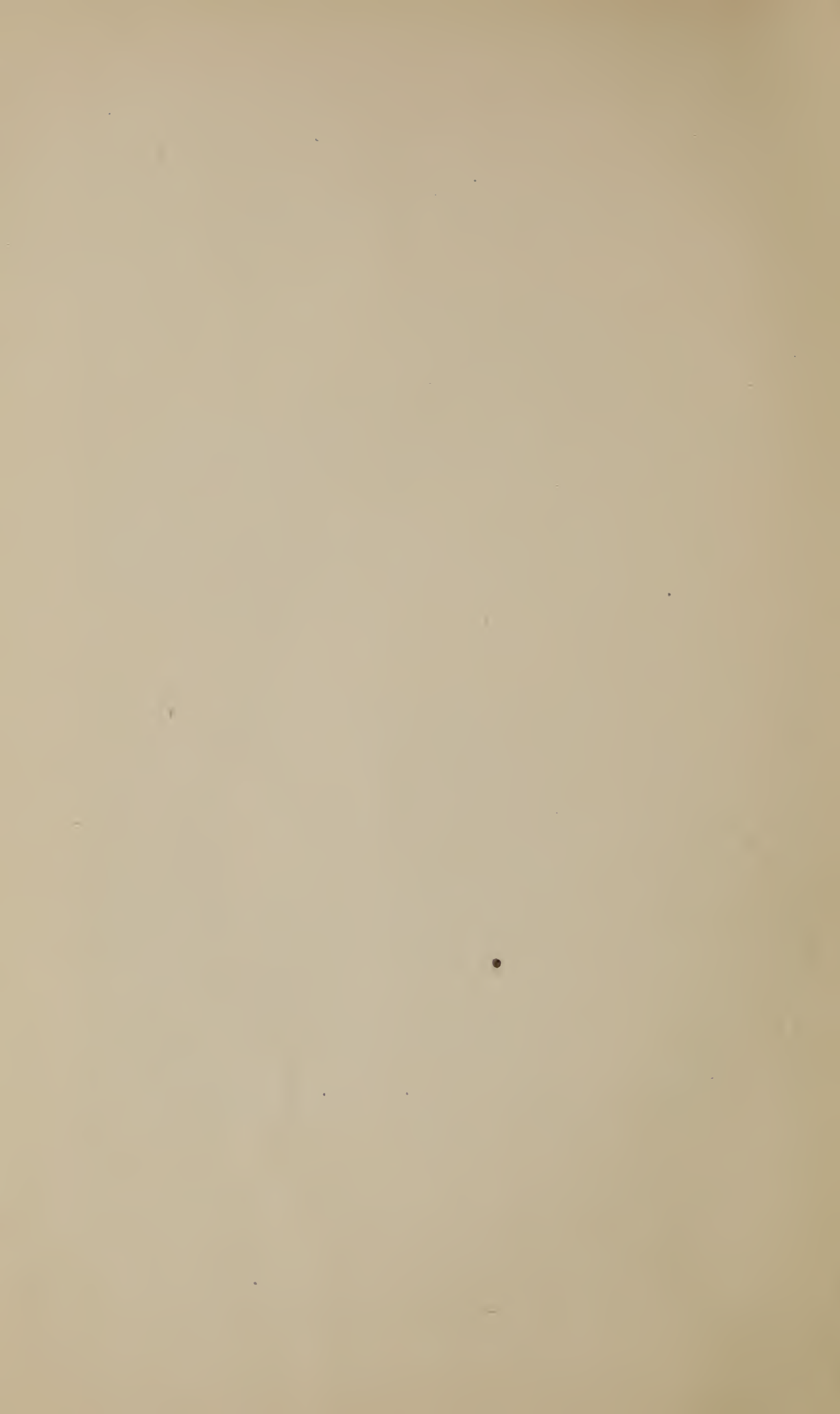
STATE NORMAL SCHOOL,

SALEM, MASS.



1890-1891.

BOSTON :  
WRIGHT & POTTER PRINTING CO., STATE PRINTERS,  
18 Post Office Square.  
1891.



# REGISTER FOR THE YEAR 1890-91.

## BOARD OF EDUCATION.

HIS EXCELLENCY GOVERNOR WILLIAM E. RUSSELL, CAMBRIDGE.

HIS HONOR LIEUTENANT-GOVERNOR WILLIAM H. HAILE, SPRINGFIELD.

REV. ELMER H. CAPEN, D.D.	. . . . .	COLLEGE HILL.
HON. ELIJAH B. STODDARD	. . . . .	WORCESTER.
REV. ALONZO A. MINER, D.D.	. . . . .	BOSTON.
MRS. ALICE FREEMAN PALMER	. . . . .	CAMBRIDGE.
ADMIRAL P. STONE, LL.D.	. . . . .	SPRINGFIELD.
MRS. KATE GANNETT WELLS	. . . . .	BOSTON.
HON. MILTON B. WHITNEY	. . . . .	WESTFIELD.
GEORGE I. ALDRICH, A.M.	. . . . .	QUINCY.

## OFFICERS OF BOARD OF EDUCATION.

HON. JOHN W. DICKINSON, A.M., SECRETARY.

C. B. TILLINGHAST, Esq., ASSISTANT SECRETARY AND TREASURER.

GEORGE A. WALTON, A.M., AGENT	. . . . .	WEST NEWTON.
GEORGE H. MARTIN, A.M., AGENT	. . . . .	LYNN.
ANDREW W. EDSON, A.M., AGENT	. . . . .	WORCESTER.
G. T. FLETCHER, A.M., AGENT	. . . . .	NORTHAMPTON.
HENRY T. BAILEY, AGENT	. . . . .	NORTH SCITUATE.

## BOARD OF VISITORS.

REV. ELMER H. CAPEN, D.D.	. . . . .	COLLEGE HILL.
GEORGE I. ALDRICH, A.M.	. . . . .	QUINCY.
HON. JOHN W. DICKINSON, A.M.	. . . . .	NEWTONVILLE.

## INSTRUCTORS.

DANIEL B. HAGAR, A.M., Ph.D., PRINCIPAL.

ELLEN M. DODGE.	MARY E. GODDEN.
CAROLINE J. COLE.	JESSIE P. LEAROYD.
SOPHIA O. DRIVER.	CHARLES E. ADAMS.
HARRIET L. MARTIN.	ABBIE E. RICHARDS.
E. ADELAIDE TOWLE.	M. JEANNETTE BROOKINGS.
HARRIET D. ALLEN.	CHARLES F. WHITNEY.

## REGISTER OF STUDENTS

FOR THE

TERM ENDING JANUARY 20, 1891.

## SPECIAL STUDENTS.

Grace J. Burleigh . . . . .	Salem.
Emma L. Corson . . . . .	Salem.
Gertrude A. Fuller . . . . .	Salem.
Louise E. Mäder . . . . .	Mahone Bay, N. S.
Carlotta H. Pulsifer . . . . .	Salem.
Lizzie W. Richardson . . . . .	Salem.

## ADVANCED CLASS.

Mary A. Comey . . . . .	Lynn.
Frances L. Ellis . . . . .	Danvers.
Mary A. Mack . . . . .	Danversport.
Clarabel Mosman . . . . .	North Reading.
Mary Elizabeth Poole . . . . .	Peabody.
Florence I. Shepard . . . . .	Middleton.
Abby A. Sutherland . . . . .	Salem.
Hamie S. Thompson . . . . .	Middleton.

## CLASS A.

Alice M. Abbott . . . . .	New Market, N. H.
Florence J. Alley . . . . .	East Cambridge.
Isabelle R. Blackman . . . . .	Cambridge.
Alice B. Bodwell . . . . .	Salem.
Jane R. K. Brown . . . . .	Tyngsborough.
Jennie R. Brown . . . . .	Pigeon Cove.



Lizzie Campbell . . . . .	Danvers.
Fannie C. Carleton . . . . .	Beaver Brook.
Ellen B. Collier . . . . .	Somerville.
Agnes A. Comey . . . . .	Lynn.
Mabel E. Cutts . . . . .	Kittery Point, Me.
Caroline S. Dalton . . . . .	Peabody.
Jennie E. Gallagher . . . . .	Woburn.
Alice S. Graham . . . . .	Manchester.
Mary Abbie Grant . . . . .	Salem.
Florence C. Haskell . . . . .	Manchester.
Louise F. Heinritz . . . . .	Holyoke.
Annie G. Hughes . . . . .	Boston.
Lilla S. Keniston . . . . .	Everett.
Alice M. Layton . . . . .	Salem.
Hattie May Legro . . . . .	Malden.
Susie L. Lord . . . . .	Salem.
Jessie W. Low . . . . .	Essex.
Alice M. Macdonald . . . . .	Everett.
Ellen Genevieve Moriarty . . . . .	Salem.
Nellie M. Parsons . . . . .	Saugus.
Bertha J. Patten . . . . .	Lynn.
Nellie Pearson . . . . .	Hampton Falls, N. H.
Emma Ruddock . . . . .	Groveland.
Eva Gertrude Simpson . . . . .	Gloucester.
Lulu L. F. Spiller . . . . .	Beverly.
Emma L. Stetson . . . . .	Salem.
Jennie E. Sutherland . . . . .	Salem.
Mary E. G. Walsh . . . . .	Salem.
Lizzie F. Webber . . . . .	Bedford.
Mary H. Wilkins . . . . .	Middleton.
Abigail Frances Wilson . . . . .	Peabody.
Hattie B. Witherell . . . . .	Lowell.

## CLASS B.

Susie B. Baker . . . . .	Georgetown.
Frances E. Bard . . . . .	Salem.
Rose S. Bent . . . . .	North Reading.
Sallie A. Bowen . . . . .	Salem.
M. Louise Brennan . . . . .	Cambridge.
Mabel C. Bryant . . . . .	Gloucester.

---

Lois M. Burley . . . . .	Everett.
Dorothy M. Coleman . . . . .	Newington, N. H.
Hannah Josephine Daly . . . . .	Salem.
Elizabeth M. Dodge . . . . .	Newburyport.
Mary A. Doyle . . . . .	Beaver Brook.
Carrie Imogene Goodale . . . . .	Tunbridge, Vt.
Carrie C. Goodell . . . . .	Salem.
Mabel Lillian Griffin . . . . .	Lynn.
Caroline P. Hayward . . . . .	Andover.
Elizabeth R. Healy . . . . .	Gloucester.
Mary E. Hooper . . . . .	Danvers.
Laura E. Horne . . . . .	Berwick, Me.
Eva C. Jenkins . . . . .	Lynn.
Laura Grace Johnson . . . . .	Salem.
Mary F. Kauffmann . . . . .	East Lexington.
Alicia C. King . . . . .	Lynn.
Emma T. Laurence . . . . .	Port Hastings, C. B.
Julia May Leach . . . . .	Blake, Fla.
Florence Emily Martin . . . . .	Salem.
Joanna F. McGrath . . . . .	Rockport.
Isabelle H. Miller . . . . .	Lynn.
Mary D. Morse . . . . .	Manchester.
Mary Newman . . . . .	Newbury.
Laura Alida Nickerson . . . . .	Rockport.
Corinne H. Nutter . . . . .	Bath, N. H.
Nellie A. O'Connell . . . . .	Peabody.
Colletta A. Parker . . . . .	Melrose.
Ethel S. Pearson . . . . .	Candia, N. H.
Mary A. Phillips . . . . .	Salem.
Gracie E. Pitcher . . . . .	Salem.
Annie L. Prince . . . . .	Wenham.
Eva M. Purinton . . . . .	Ipswich.
Grace A. Reed . . . . .	Burlington.
Annie E. Reynolds . . . . .	Woburn.
Jennie F. Reynolds . . . . .	Lynn.
Lucy W. Roby . . . . .	Reading.
Livonia P. Rust . . . . .	Gloucester.
Margaret L. Sullivan . . . . .	Medford.
Lucy Ethel Swett . . . . .	Peabody.
Mary A. Underhill . . . . .	Ipswich.

Jennie Lillian Upham . . . . .	Lynn.
Hattie G. West . . . . .	Chelsea.
Mary E. Whearty . . . . .	Bay View.
Alice M. Winslow . . . . .	Malden.
Lena B. Winter . . . . .	Lynn.
Mabel P. Woodbury . . . . .	Danvers.

## CLASS C.

Alice E. Abbott . . . . .	North Reading.
Mabel W. Bancroft . . . . .	Peabody.
Elizabeth A. Bartlett . . . . .	Epping, N. H.
Marguerite W. Battersby . . . . .	Boston.
Josephine L. Burnham . . . . .	Essex.
Georgetta Campbell . . . . .	Chelsea.
Ida May Cartland . . . . .	Wakefield.
Alice M. Clancy . . . . .	Danvers Centre.
Susan E. Cobb . . . . .	Salem.
Emma L. Colley . . . . .	Salem.
Mary E. Crowley . . . . .	Medford.
Hannah P. Currier . . . . .	Everett.
Louise Curtis . . . . .	Gloucester.
Belle M. Felker . . . . .	North Barrington, N. H.
Ethel L. Fogg . . . . .	Lynn.
Mary E. Francis . . . . .	Salem.
Laura A. Fuller . . . . .	Salem.
Alice L. Gates . . . . .	Everett.
Susanna Goodwin . . . . .	Marblehead.
Grace L. Hayes . . . . .	Peabody.
M. Isabelle Hutt . . . . .	Swampscott.
Agnes M. James . . . . .	Somerville.
Gertrude A. Jones . . . . .	Wakefield, N. H.
Josephine A. Kelley . . . . .	Tapleville.
Alice A. Murphy . . . . .	Brookline.
Isabelle A. Nauss . . . . .	Gloucester.
Catharine G. O'Brien . . . . .	Cambridgeport.
Mary E. Parkhurst . . . . .	South Bristol, Me.
Etta L. Paul . . . . .	Rockport.
Charlotte M. Poore . . . . .	Byfield.
Henrietta W. Rogers . . . . .	Derry, N. H.
Alice C. Ropes . . . . .	Salem.

Alice E. Sawtelle . . . . .	Lynn.
Margaret L. Shanahan . . . . .	South Groveland.
Caroline E. Shirley . . . . .	Andover, N. H.
Luella M. Sidmore . . . . .	Danversport.
Eliza M. Sutherland . . . . .	Lynn.
Elizabeth F. Taaffe . . . . .	West Newton.
Grace Rolston Torr . . . . .	Peabody.
Agnes Morton True . . . . .	Amesbury.
Luella Turner . . . . .	Salem.
Alice M. Watts . . . . .	West Boxford.
Marion C. Whipple . . . . .	Peabody.
Susie E. White . . . . .	Lynn.
Ada F. Whitney . . . . .	Boston.

## CLASS D.

Florence I. Abbott . . . . .	Andover.
Lillie M. Adams . . . . .	Georgetown.
Clara E. Baird . . . . .	Gloucester.
Mary W. Baker . . . . .	Tewksbury.
Abbie F. Beane . . . . .	Newington, N. H.
Eliza W. Beard . . . . .	Wenham.
Alice C. Bernard . . . . .	Beverly.
Bertha M. Boultenhouse . . . . .	Amesbury.
Harriet M. Brown . . . . .	Everett.
Lilian F. Brown . . . . .	Salem.
Narcissa Burnham . . . . .	Beverly.
Mary A. Clark . . . . .	Peabody.
Clara H. Coburn . . . . .	Saugus.
Mary L. Cogswell . . . . .	North Andover.
Emma H. Dame . . . . .	Farmington, N. H.
Millie A. Damon . . . . .	Kittery, Me.
Alice G. Davenport . . . . .	Medford.
Cora M. E. Davison . . . . .	Winthrop.
Lovicy I. M. Davison . . . . .	Winthrop.
Edna L. Dennett . . . . .	Everett.
Bessie F. Dodge . . . . .	Wenham.
Mary A. Doran . . . . .	North Cambridge.
Minnie A. Doran . . . . .	Cambridge.
Mary E. Driscoll . . . . .	Salem.
Charlotte A. Eaton . . . . .	North Reading.

Margaret A. English . . . . .	East Cambridge.
Mary E. Farmer . . . . .	Billerica.
Susan E. Farnham . . . . .	Peabody.
Dollie M. Farnum . . . . .	North Andover.
Alice Farrar . . . . .	Amesbury.
Edith M. Ferguson . . . . .	Topsfield.
Anna M. Folan . . . . .	Salem.
Harriet O. Giles . . . . .	Rockport.
Annie B. Haraden . . . . .	Manchester.
Mary R. Hennessey . . . . .	Salem.
Catherine F. Hollis . . . . .	Wakefield.
Grace M. Horney . . . . .	Rochester, N. H.
Bessie E. Huntoon . . . . .	Lowell.
Minnie J. Hurley . . . . .	Farmington, N. H.
Mabel L. Kelley . . . . .	Lynn.
Grace A. Knowlton . . . . .	Hamilton.
Stymie P. Loggie . . . . .	Medford.
Angie M. Lurvey . . . . .	Pigeon Cove.
Ellen T. Maguire . . . . .	Pigeon Cove.
Mary A. Mahoney . . . . .	North Andover.
Sarah W. Matthews . . . . .	Boxford.
Agnes M. Merrow . . . . .	South Peabody.
Ellen Nugent . . . . .	Gloucester.
Rebecca M. O'Connell . . . . .	Wakefield.
Florence A. Oliver . . . . .	Chelsea.
Elizabeth R. Osborn . . . . .	Peabody.
Mabel A. Patch . . . . .	Salem.
Grace M. Pattee . . . . .	Peabody.
Bertha L. Peabody . . . . .	Middleton.
Emma Penney . . . . .	North Cambridge.
Maude A. Pingree . . . . .	Georgetown.
Lillian E. Rich . . . . .	Middleton.
Nettie E. Runnels . . . . .	South Newbury, Vt.
Mary A. Sheehan . . . . .	Peabody.
M. Agnes Sheridan . . . . .	Somerville.
Grace Shorey . . . . .	Somerville.
Abbie A. Smith . . . . .	Malden.
Harriet W. Stewart . . . . .	Swampscott.
Alice M. Sullivan . . . . .	Tapleyville.
Mary Sutton . . . . .	Bay View.

---

Cora M. Swift . . . . .	Lynn.
Anna E. Thompson . . . . .	Stratham, N. H.
Evelyn G. Thompson . . . . .	Middleton.
Esther B. Wadsworth . . . . .	Chelsea.
Anna M. Warren . . . . .	Georgetown.
Jennie Webb . . . . .	Somerville.
Ellen M. Weeks . . . . .	Littleton, N. H.
Clara N. Wentworth . . . . .	Rochester, N. H.
Harriet L. Weston . . . . .	Reading.
Janet C. Whigham . . . . .	Pigeon Cove.
Flora G. Whitney . . . . .	Winchester.
Bertha L. A. Wilkins . . . . .	Hillsboro' Centre, N. H.
Ella M. Willand . . . . .	Dover, N. H.

## SUMMARY.

Special Students . . . . .	6
Advanced Class . . . . .	8
Class A (Senior) . . . . .	38
Class B . . . . .	52
Class C . . . . .	45
Class D . . . . .	78
Whole number for the term . . . . .	227
Whole number for seventy-three terms . . . . .	3,670

## REGISTER OF STUDENTS

FOR THE

TERM ENDING JUNE 30, 1891.

## SPECIAL STUDENTS.

Gertrude A. Fuller . . . . .	Salem.
Susie L. Lord . . . . .	Salem.
Ellen Genevieve Moriarty . . . . .	Salem.
Jennie E. Sutherland . . . . .	Salem.
Esther B. Wadsworth . . . . .	Chelsea.

## ADVANCED CLASS.

Mary A. Comey . . . . .	Lynn.
Frances L. Ellis . . . . .	Danvers.
Annie G. Hughes . . . . .	Boston.
Mary A. Mack . . . . .	Danversport.
Clarabel Mosman . . . . .	North Reading.
Mary Elizabeth Poole . . . . .	Peabody.
Florence I. Shepard . . . . .	Middleton.
Hamie S. Thompson . . . . .	Middleton.

## CLASS A.

Susie B. Baker . . . . .	Georgetown.
Frances E. Bard . . . . .	Salem.
Rose S. Bent . . . . .	North Reading.
Sallie A. Bowen . . . . .	Salem.
M. Louise Brennan . . . . .	Cambridge.
Mabel C. Bryant . . . . .	Gloucester.
Lois M. Burley . . . . .	Everett.
Dorothy M. Coleman . . . . .	Newington, N. H.

---

Agnes A. Comey . . . . .	Lynn.
Elizabeth M. Dodge . . . . .	Newburyport.
Jennie E. Gallagher . . . . .	Woburn.
Carrie Imogene Goodale . . . . .	Tunbridge, Vt.
Mabel Lillian Griffin . . . . .	Lynn.
Mary E. Hooper . . . . .	Danvers.
Laura E. Horne . . . . .	Berwick, Me.
Eva C. Jenkins, . . . . .	Lynn.
Mary F. Kauffmann . . . . .	East Lexington.
Emma T. Laurence . . . . .	Port Hastings, C. B.
Alice M. Macdonald . . . . .	Everett.
Florence Emily Martin . . . . .	Salem.
Joanna F. McGrath . . . . .	Rockport.
Isabelle H. Miller . . . . .	Lynn.
Mary D. Morse . . . . .	Manchester.
Mary Newman . . . . .	Newbury.
Laura Alida Nickerson . . . . .	Rockport.
Corinne H. Nutter . . . . .	Bath, N. H.
Nellie A. O'Connell . . . . .	Peabody.
Colletta A. Parker . . . . .	Melrose.
Nellie Pearson . . . . .	Hampton Falls, N. H.
Gracie E. Pitcher . . . . .	Salem.
Annie L. Prince . . . . .	Wenham.
Eva M. Purinton . . . . .	Ipswich.
Annie E. Reynolds . . . . .	Woburn.
Lucy W. Roby . . . . .	Reading.
Livonia P. Rust . . . . .	Gloucester.
Lula L. F. Spiller . . . . .	Beverly.
Lucy Ethel Swett . . . . .	Peabody.
Mary A. Underhill . . . . .	Ipswich.
Jennie Lillian Upham . . . . .	Lynn.
Lizzie F. Webber . . . . .	Bedford.
Hattie G. West . . . . .	Chelsea.
Mary E. Whearty . . . . .	Bay View.
Alice M. Winslow . . . . .	Malden.
Mabel P. Woodbury . . . . .	Danvers.

## CLASS B.

Mabel W. Bancroft . . . . .	Peabody.
Elizabeth A. Bartlett . . . . .	Epping, N. H.



---

Josephine L. Burnham . . . . .	Essex.
Mary E. Cashman . . . . .	Danvers.
Alice M. Clancy . . . . .	Danvers Centre.
Susan E. Cobb . . . . .	Salem.
Mary E. Crowley . . . . .	Medford.
Hannah P. Currier . . . . .	Everett.
Louise Curtis . . . . .	Gloucester.
Hannah Josephine Daley . . . . .	Salem.
Mary A. Doyle . . . . .	Beaver Brook.
Belle M. Felker . . . . .	North Barrington, N. H.
Ethel L. Fogg . . . . .	Lynn.
Mary E. Francis . . . . .	Salem.
Laura A. Fuller . . . . .	Salem.
Alice L. Gates . . . . .	Everett.
Carrie C. Goodell . . . . .	Salem.
Susanna Goodwin . . . . .	Marblehead.
Grace L. Hayes . . . . .	Peabody.
Elizabeth R. Healy . . . . .	Gloucester.
M. Isabelle Hutt . . . . .	Swampscott.
Laura Grace Johnson . . . . .	Salem.
Gertrude A. Jones . . . . .	Wakefield, N. H.
Josephine A. Kelley . . . . .	Tapleyville.
Alicia C. King . . . . .	Lynn.
Julia May Leach . . . . .	Blake, Fla.
Alice A. Murphy . . . . .	Brookline.
Isabelle A. Nauss . . . . .	Gloucester.
Catharine G. O'Brien . . . . .	Cambridgeport.
Mary E. Parkhurst . . . . .	South Bristol, Me.
Etta L. Paul . . . . .	Rockport.
Mary A. Phillips . . . . .	Salem.
Charlotte M. Poore . . . . .	Byfield.
Grace A. Reed . . . . .	Burlington.
Henrietta W. Rogers . . . . .	Derry, N. H.
Alice C. Ropes . . . . .	Salem.
Nellie M. Roundy . . . . .	Fitzwilliam, N. H.
Alice E. Sawtell . . . . .	Lynn.
Margaret L. Shanahan . . . . .	South Groveland.
Caroline E. Shirley . . . . .	Andover, N. H.
Luella M. Sidmore . . . . .	Danversport.
Margaret L. Sullivan . . . . .	Medford.

Eliza M. Sutherland . . . . .	Lynn.
Elizabeth F. Taaffe . . . . .	West Newton.
Grace Rolston Torr . . . . .	Peabody.
Agnes Morton True . . . . .	Amesbury.
Luella Turner . . . . .	Salem.
Lucy E. Warner . . . . .	Peabody.
Alice M. Watts . . . . .	West Boxford.
Marion C. Whipple . . . . .	Peabody.
Susie E. White . . . . .	Taunton.
Ada F. Whitney . . . . .	Boston.
Lena B. Winter . . . . .	Lynn.

## CLASS C.

Alice E. Abbott . . . . .	North Reading.
Lillie M. Adams . . . . .	Georgetown.
Clara E. Baird . . . . .	Gloucester.
Mary W. Baker . . . . .	Tewksbury.
Abbie F. Beane . . . . .	Newington, N. H.
Eliza W. Beard . . . . .	Wenham.
Alice C. Bernard . . . . .	Beverly.
Bertha M. Boultenhouse . . . . .	Amesbury.
Harriet M. Brown . . . . .	Everett.
Lilian F. Brown . . . . .	Salem.
Narcissa Burnham . . . . .	Beverly.
Georgetta Campbell . . . . .	Chelsea
Mary A. Clark . . . . .	Peabody.
Clara H. Coburn . . . . .	Saugus.
Emma L. Colley . . . . .	Salem.
Florence A. Cushing . . . . .	Wakefield.
Emma H. Dame . . . . .	Farmington, N. H.
Millie A. Damon . . . . .	Kittery, Me.
Alice G. Davenport . . . . .	Medford.
Edna L. Dennett . . . . .	Everett.
Bessie F. Dodge . . . . .	Wenham.
Mary A. Doran . . . . .	North Cambridge.
Minnie A. Doran . . . . .	Cambridge.
Mary E. Driscoll . . . . .	Salem.
Charlotte A. Eaton . . . . .	North Reading.
Mary E. Farmer . . . . .	Billerica.

---

Susan E. Farnham . . . . .	Peabody.
Dollie M. Farnum . . . . .	North Andover.
Alice Farrar . . . . .	Amesbury.
Anna M. Folan . . . . .	Salem.
Harriet O. Giles . . . . .	Rockport.
Annie B. Haraden . . . . .	Manchester.
Catherine F. Hollis . . . . .	Wakefield.
Grace M. Horney . . . . .	Rochester, N. H.
Bessie E. Huntoon . . . . .	Lowell.
Minnie J. Hurley . . . . .	Farmington, N. H.
Agnes M. James . . . . .	Somerville.
Mabel L. Kelley . . . . .	Lynn.
Grace A. Knowlton . . . . .	Hamilton.
Stymie P. Loggie . . . . .	Medford.
Angie M. Lurvey . . . . .	Pigeon Cove.
Ellen T. Maguire . . . . .	Pigeon Cove.
Mary A. Mahoney . . . . .	North Andover.
Ellen Nugent . . . . .	Gloucester.
Rebecca M. O'Connell . . . . .	Wakefield.
Elizabeth R. Osborn . . . . .	Peabody.
Mabel A. Patch . . . . .	Salem.
Grace M. Pattee . . . . .	Peabody.
Emma Penney . . . . .	North Cambridge.
Nettie E. Runnels . . . . .	South Newbury, Vt.
Mary A. Sheehan . . . . .	Peabody.
M. Agnes Sheridan . . . . .	Somerville.
Grace Shorey . . . . .	Somerville.
Abbie A. Smith . . . . .	Malden.
Harriet W. Stewart . . . . .	Swampscott.
Alice M. Sullivan . . . . .	Tapleyville.
Anna E. Thompson . . . . .	Stratham, N. H.
Anna M. Warren . . . . .	Georgetown.
Jennie Webb . . . . .	Somerville.
Ellen M. Weeks . . . . .	Littleton, N. H.
Clara N. Wentworth . . . . .	Rochester, N. H.
Janet C. Whigham . . . . .	Pigeon Cove.
Flora G. Whitney . . . . .	Winchester.
Bertha L. A. Wilkins . . . . .	Hillsboro' Centre, N. H.
Ella M. Willand . . . . .	Dover, N. H.

## CLASS D.

Clara E. Atwood . . . . .	Salem.
Elizabeth H. Batchelder . . . . .	North Reading.
Bessie M. Bingay . . . . .	Everett.
Nellie J. Bumstead . . . . .	Jewett City, Conn.
Helen J. Burt . . . . .	Everett.
Estelle F. Campbell . . . . .	Everett.
Laura E. Clark . . . . .	Beverly.
Josephine S. Cleary . . . . .	Danvers.
Agnes M. Dow . . . . .	Wakefield.
Margaret A. English . . . . .	East Cambridge.
Mabel Farrington . . . . .	Peabody.
Edith M. Ferguson . . . . .	Topsfield.
Hannah B. Ford . . . . .	Roxbury.
Sarah L. Gillelan . . . . .	Hampton, N. H.
Addie C. Gray . . . . .	Farmington, N. H.
Grace E. Hanson . . . . .	Beverly.
Jennie M. Harmon . . . . .	Swampscott.
Edna W. Hodgkins . . . . .	Atlantic.
Isabelle S. Jordan . . . . .	Upper Gloucester, Me.
Catherine L. Kelley . . . . .	Wakefield.
Gertrude C. Knox . . . . .	Dover, N. H.
Hattie I. Lake . . . . .	Middleton.
Mary E. Lane . . . . .	Nahant.
Bertha C. Lawrence . . . . .	Falmouth.
Florence L. Macdonald . . . . .	Peabody.
Marian L. Macdonald . . . . .	Everett.
Julia G. McHugh . . . . .	Cambridge.
Hattie K. McLeod . . . . .	Topsfield.
Gertrude M. McNeil . . . . .	Rockport.
Agnes M. Merrow . . . . .	South Peabody.
Kate T. Morrilly . . . . .	Fitchburg.
Jessie I. Murray . . . . .	Middleton.
Florence A. Oliver . . . . .	Chelsea.
Emma Pearson . . . . .	Hampton Falls, N. H.
Lilla B. Perkins . . . . .	Ogunquit, Me.
Edith M. Randall . . . . .	Andover.
Mary A. Ray . . . . .	Topsfield.
Minnie E. Smith . . . . .	Salem.

Augusta E. Storer . . . . .	Wells, Me.
Alice L. Story . . . . .	Essex.
Evelyn G. Thompson . . . . .	Middleton.
Jennie Towne . . . . .	Spencer.
Harriet L. Weston . . . . .	Reading.
Louise G. White . . . . .	Wakefield.

## SUMMARY.

Special Students . . . . .	5
Advanced Class . . . . .	8
Class A (Senior) . . . . .	44
Class B . . . . .	53
Class C . . . . .	65
Class D . . . . .	44
Whole number for the term . . . . .	219
Whole number for the year . . . . .	269
Whole number for seventy-four terms . . . . .	3,707

# STATE NORMAL SCHOOL, SALEM, MASS.

This institution was established by the Commonwealth of Massachusetts, with the liberal co-operation of the city of Salem and the Eastern Railroad Company, for the direct preparation of female teachers to instruct in the common and high schools required by law. It is under the charge of the State Board of Education, and of a special Board of Visitors. During the period that has elapsed since the reception of the first class, in September, 1854, three thousand seven hundred and seven ladies have been members of the school, one thousand seven hundred and ninety-three of whom have received diplomas upon the honorable completion of the prescribed course of study.

### SCHOOL YEAR AND TERMS.

The school year is divided into two terms, each containing nineteen weeks of study, with a week's recess near the middle of each term.

A new class is admitted at the beginning of each term.

Terms begin.	Terms end.
1891, September 1.	1892, January 19.
1892, February 9.	1892, June 28.
1892, September 5.	1893, January 24.

### ADMISSION.

Candidates for admission must be at least sixteen years of age ; *must present on the day of examination a satisfactory certificate of*

good moral character, and of their presumed qualification for admission to the school; must declare their full intention of faithfully observing the regulations of the school during their connection with it, and of afterwards teaching in the public schools of Massachusetts;\* and must pass a satisfactory examination in reading, spelling, defining, writing, arithmetic, English grammar, geography, and the history of the United States. A greater age and higher attainments than those prescribed, with some experience in teaching, render the course of study in the institution still more useful.

*Especial attention should be given to these requirements, as they will be STRICTLY ENFORCED.*

An examination for admission takes place on the first day of each term, commencing at 8 o'clock A.M., or as soon after that hour as candidates can reach Salem.

*Ladies who propose to apply for admission are requested to notify the principal of their intention as early as possible.*

Applications for circulars and other information should be made to the principal.

#### COURSE OF STUDY.

The Board of Education have prescribed the following branches of study for the two-years course in the normal schools of the State:—

Arithmetic, algebra, geometry, book-keeping; physics, astronomy, chemistry, botany, physiology, zoölogy, mineralogy, geology, geography; reading, orthography, etymology, grammar, rhetoric, literature, composition; penmanship, drawing, singing, gymnastics; psychology, science and art of teaching, school organization, history of education; civil polity of Massachusetts and of the United States, school laws of Massachusetts, and history.

---

\* Ladies designing to teach in other States or in private schools may be admitted by paying fifteen dollars a term for tuition.

The order in which these studies are to be taken is decided by the principal of each school, with the approval of the Board of Visitors.

The following additional studies are assigned for the four-years course :—

Advanced physics, advanced chemistry, higher mathematics (including plane and solid geometry, higher algebra, and trigonometry), general history, Latin and French; Greek or German, in addition, is optional with the principal and the Board of Visitors of each school.

#### ADVANCED COURSE.

Graduates of the regular course who desire to prepare themselves for the higher departments of teaching are permitted to take an advanced course, which occupies two years, and includes instruction and training in the Latin, French and German languages, the higher mathematics, and the other branches required to be taught in the high schools of Massachusetts. Graduates of the school who may desire to take the advanced course are requested to communicate with the principal as early as possible. *A new class is formed at the beginning of each fall term.*

#### TWO-YEARS COURSE IN DETAIL.

The following are the studies which are carried through the course, with the number of exercises per week :—

Reading (2) ; English composition, including rhetoric (2) ; vocal music (2) ; spelling, defining and etymology (4) ; drawing (2) ; number (4).

#### *Class D (lowest).*

English grammar, anatomy and physiology, geography, and arithmetic, each four exercises per week.

#### *Class C.*

English grammar, geography, arithmetic, geometry, each four exercises, and botany, two exercises.



*Class B.*

Physics, chemistry, English literature, United States history, arithmetic (half term), algebra (half term), each four exercises.

*Class A.*

Astronomy (half term), geology (half term), object lessons given to classes of children, psychology applied to principles and methods of teaching and school management, mental philosophy, school laws, civil government, book-keeping, zoölogy.

## AIMS AND METHODS OF STUDY AND TRAINING.

The ends chiefly aimed at in this school are the acquisition of the necessary knowledge of the principles and methods of education and of the various branches of study, the attainment of skill in the art of teaching, and the general development of the mental powers.

From the beginning to the end of the course all studies are conducted with especial reference to the best ways of teaching them. Recitations, however excellent, are not deemed satisfactory unless every pupil is able to teach others that which she has herself learned. In every study the pupils in turn occupy temporarily the place of teacher of their classmates, and are subjected to their criticisms as well as those of their regular teacher. Teaching exercises of various kinds forms a large and important part of the school work. During the senior term object lessons are given to classes of primary-school children, so that every pupil obtains, before graduating, considerable experience in teaching children to observe, think, and give expression to thought.

The studies are conducted upon the topical plan. Text-books are used, to a large extent, as books of reference. The committing of text-books to memory is avoided as far as possible, the scholars being trained to depend upon thoughts rather than words.

The great object of the school is to make the pupils investigate, think, and speak for themselves; to make them independent, self-reliant, and ready to meet whatever difficulties may arise.

The pupils are carefully trained in the manufacture of simple and inexpensive apparatus for the illustration of physics and chemistry.

#### DISCIPLINE.

The discipline of the school is made as simple as possible. Pupils are expected to govern themselves, to do without compulsion what is required, and to refrain voluntarily from all improprieties of conduct. Those who are unwilling to conform cheerfully to the known wishes of the principal and his assistants are presumed to be unfit to become teachers.

It is not deemed necessary to awaken a feeling of emulation, in order to induce the scholars to perform their duties faithfully. The ranking of scholars according to their comparative success in their studies is not here allowed. Faithful attention to duty is encouraged for its own sake, not for the purpose of obtaining certain marks of credit.

#### PROMOTIONS AND GRADUATIONS.

Promotions from one class to another are made at the close of each term, by means of thorough written examinations. These examinations include every study pursued during the term, and the result in each study must be satisfactory to entitle the pupil to advance to the study next in order. In the senior term a special examination is had in all the branches taught in the common schools, and only those who pass it successfully are permitted to graduate. Young ladies who possess good natural abilities and right habits of study find no serious difficulties in passing the required examinations.

#### LIBRARY, APPARATUS AND MUSEUM.

The institution has a valuable library, containing, in works for general reference and reading, and in text-books, about nine thousand volumes. It has, also, a fair supply of philosophical apparatus, and a museum containing a large collection of specimens illustrating various departments of science.

An important addition to the means of practical instruction in chemistry has been made, whereby a large number of pupils can, at the same time, engage in chemical investigations, free from all danger of inhaling injurious gases.

The friends of the higher education of women can confer a great benefit upon the institution by making donations to its library and museum. Any aid in this direction will be gratefully acknowledged.

#### ART ROOM.

A room has been handsomely fitted up and furnished for the purpose of affording facilities for instruction and training in the higher departments of drawing. A large number of beautiful casts, models and patterns have been obtained from London, and have been conveniently arranged in the room, thus giving to the members of the school advantages not formerly enjoyed.

#### ESSEX INSTITUTE AND PEABODY ACADEMY OF SCIENCE.

The important advantages offered by these well-known and most useful institutions are freely enjoyed by members of the normal school. The large and, in some respects, unequalled museum and cabinet belonging to the institute and academy afford rare opportunities for studies in various departments of science; and the instructive meetings of the Essex Institute, for the discussion of historical and scientific subjects, possess great value for all who are interested in the study of history and of nature.

#### EXPENSES, AID, ETC.

Tuition is free to those who comply with the condition of teaching in the public schools of Massachusetts, wherever they may have previously resided. A small fee (two dollars) is paid by each pupil at the beginning of the term, for incidental expenses.

The text-books required are mostly furnished, without charge, from the school library. It is recommended, however, that pupils should bring with them, for purposes of reference and comparison, the text-books which they have already studied; and they should, especially, be provided with a dictionary and a recent atlas.

The price which is paid by the pupils for board (not usually including washing, or separate fire and lights) varies from three to four dollars per week, according to the accommodations furnished. Pupils who prefer to board themselves can obtain good rooms for about one dollar a week.

Pupils who come to the school daily by railroads obtain season tickets at one-half of the usual rates.

For the assistance of those who find even the moderate expenses of the school burdensome, the Commonwealth makes an annual appropriation. This aid is distributed at the close of each term, among pupils from Massachusetts who merit and need the aid, in sums varying according to the distance of their residences from Salem, but not exceeding in any case one dollar and fifty cents per week. In this distribution, the first term of a pupil's connection with the school is not reckoned, unless she enters prepared to complete the prescribed course of study in less than two years.

Aid is also rendered, in cases of special merit and need, from the income of the fund of five thousand dollars, for which the school is indebted to the munificent bequest of NATHANIEL I. BOWDITCH, Esq., of Brookline.

SALEM, May, 1891.