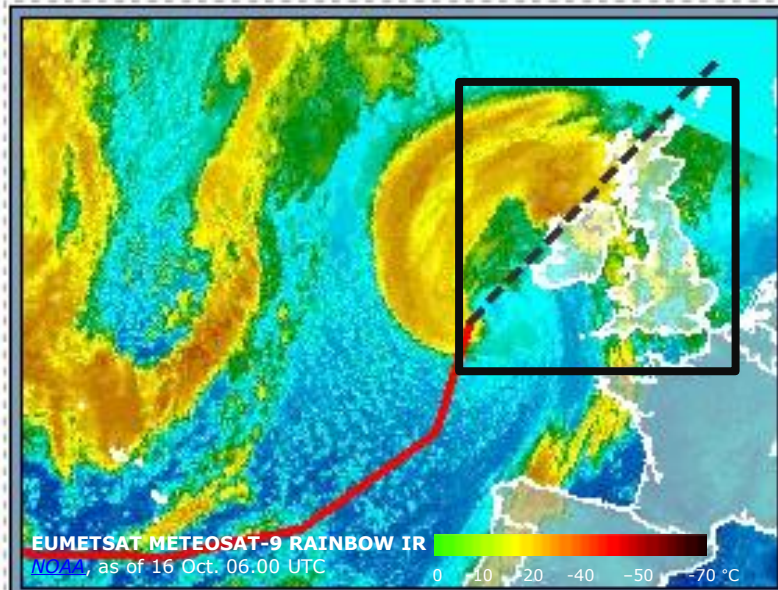


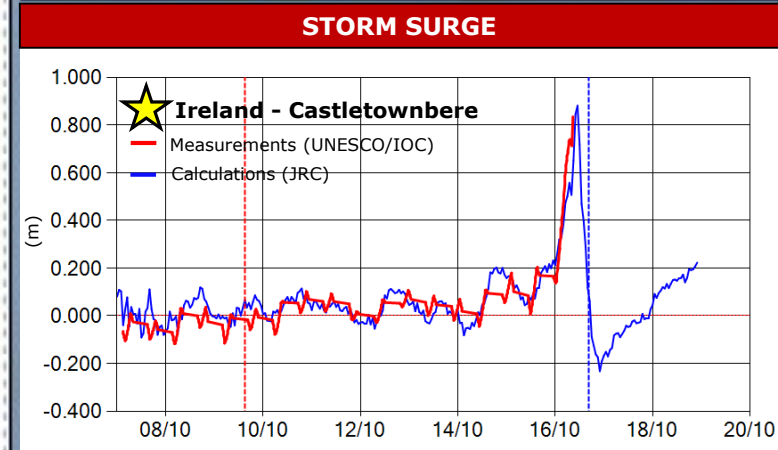
Emergency Response Coordination Centre (ERCC) – DG ECHO Daily map | 16/10/2017 Ireland, United Kingdom | Extra Tropical Cyclone OPHELIA



SITUATION OVERVIEW - IRELAND ON 16 OCT.

- 2
- 120 000

Source: Media



TRACK

- Hurricane OPHELIA
- Ex-Hurricane OPHELIA
- Approx. position of Ex-Hurricane OPHELIA

STORM SURGE
JRC Calculations (Meteo: ECMWF)

- < 1 m
- 1-1.5 m

RAINFALL ACCUMULATION
As of 16 October at 6.00 UTC
Source: Met Office

Rainfall (mm / hour)

0.01 0.5 1 2 4 8 16 32

WIND MEASUREMENTS

XX km/h Mean speed (as of 16 Oct. 12 UTC, UK MET OFFICE)

COPERNICUS EMS activation
(EMSR249 © 2017 EU)

- Area of Interest
- People dead
- Houses without electrical power

