



88066597



U.S. Department of the Interior  
Bureau of Land Management

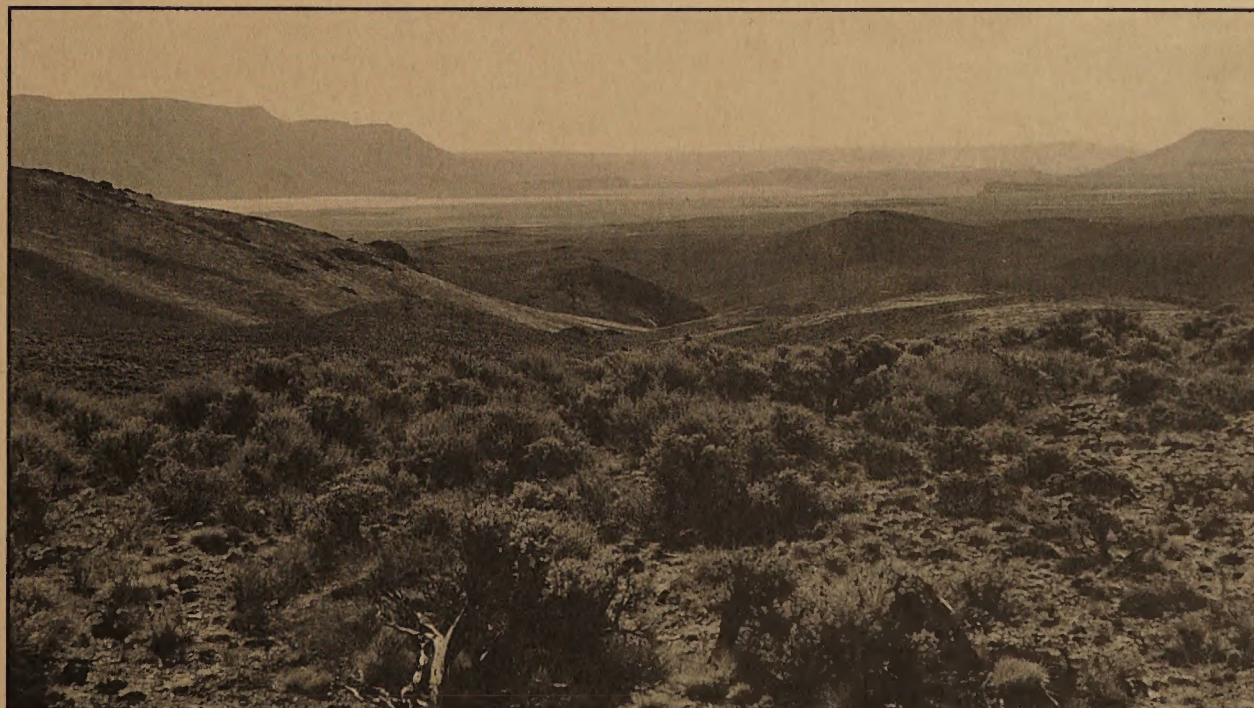
Lakeview Resource Area  
Lakeview District Office  
HC 10 Box 337  
1300 South G Street  
Lakeview, Oregon 97630-9701

**MASTER COPY**

August 1999

---

# *Lakeview Resource Area Planning Update*



HD  
243  
.07  
L354  
1999

Cover Photo: Warner Valley as viewed from the Coyote Hills. (Photo taken by Paul Whitman).

As the Nation's principal conservation agency, the Department of the Interior has responsibility for most of our nationally owned public lands and natural resources. This includes fostering the wisest use of our land and water resources, protecting our fish and wildlife, preserving the environmental and cultural values of our national parks and historic places, and providing for the enjoyment of life through outdoor recreation. The Department assesses our energy and mineral resources and works to assure that their development is in the best interest of all our people. The Department also has a major responsibility for American Indian reservation communities and for people who live in Island Territories under U.S. Administration.

**BLM/OR/WA/PL-99-026+1792**

**U.S. Department of the Interior  
Bureau of Land Management**

**Lakeview Resource Area  
Lakeview District Office  
HC 10, Box 337  
1300 South G Street  
Lakeview, Oregon 97630-9701**

**August 1999**

**Introduction**

This *Planning Update* is part of the Bureau of Land Management's (BLM) continuing commitment to keep you informed of the management of the public lands in south central Oregon. It is our hope that this annual update will help you understand land management decisions and proposals involving the BLM's Lakeview Resource Area of the Lakeview District. This document is not intended to be a comprehensive description of all activities, but rather a summary of current land use plan maintenance and implementation activities for the following approved land use plans: the *Warner Lakes Management Framework Plan* and the *High Desert Management Framework Plan* (as amended). Any comments regarding the format or content of the document should be sent to the attention of: Planning and Environmental Coordinator, at the address listed above.

**We Have Moved!**

The Lakeview District and Resource Area Offices of the BLM have been planning for several years to relocate into a new building with the Fremont National Forest Supervisor's Office. This move is part of an overall effort by our agencies to provide better customer service. This move was completed in February 1999. Please note our address change on the top of this page. Most staff phone numbers have remained the same, though some did change as a result of this move. The main switchboard phone number is 541-947-2177. Stop by and see our new office the next time you are in the area.

**What You Can Find In This Document**

Updates like this one are published annually. While a flexible format will be maintained, major sections similar to those described below will be included in each edition.

**Feature Report:** Reports in this section highlight high profile projects or planning efforts in the Lakeview Resource Area, many of which require the preparation of an Environmental Assessment (EA) or Environmental Impact Statement (EIS).

**Summary of Plan Implementation:** This section identifies the annual work completed this fiscal year.

**Environmental Assessment Register:** Listed in this section are those environmental assessments (EA's) started or expected to be completed in FY99. This section is included to improve public participation opportunities in the project planning/NEPA process.

## Feature Reports

### Introduction

The Lakeview District of the Bureau of Land Management encompasses approximately 3.5 million acres in Klamath, Lake, and part of Harney counties in southeastern Oregon (Figure 1). The district is divided into two resource areas: Klamath Falls and Lakeview Resource Areas. The two resource areas differ somewhat in the major types of management activities that occur due to the differences in the types of natural resource values present. A summary of completed and planned management activities for the Klamath Falls Resource Area is being published as a separate document. A summary of completed and planned management activities for the Lakeview Resource Area is the subject of in this document.

The Lakeview Resource Area consists of approximately 3.2 million acres of BLM-administered land in Lake and Harney counties (Figure 2) which were formerly known as the Warner Lakes and High Desert Resource Areas.

The sections that follow contain feature stories on major proposals being considered within the resource area. ***For those interested in remaining on our mailing list for specific projects, a mailing list update form is included at the end of this document.***

### Land Use Planning

Management direction for the Lakeview Resource Area is specified in the *Warner Lakes and High Desert Management Framework Plans* (MFPs), as amended, the *Lakeview Grazing Management Final Environmental Impact Statement*, and *Record of Decision*. Any management action proposed within the resource area must conform to the direction specified in these documents. Actions which do not conform require the preparation of a plan amendment or must be dropped from consideration. To date, three plan amendments have been completed. The *Warner Lakes MFP*

was amended in 1989 to officially designate the Warner Wetlands area as an Area of Critical Environmental Concern (ACEC) and outline special management direction. The *High Desert MFP* was amended in 1996 to officially designate the Lake Abert area as an ACEC and outline special management direction.

The *Warner Lakes MFP* was amended more recently to adopt a proposed jurisdictional transfer of lands between the Lakeview Resource Area and the Hart Mountain National Antelope Refuge. This amendment is discussed further in the following section.

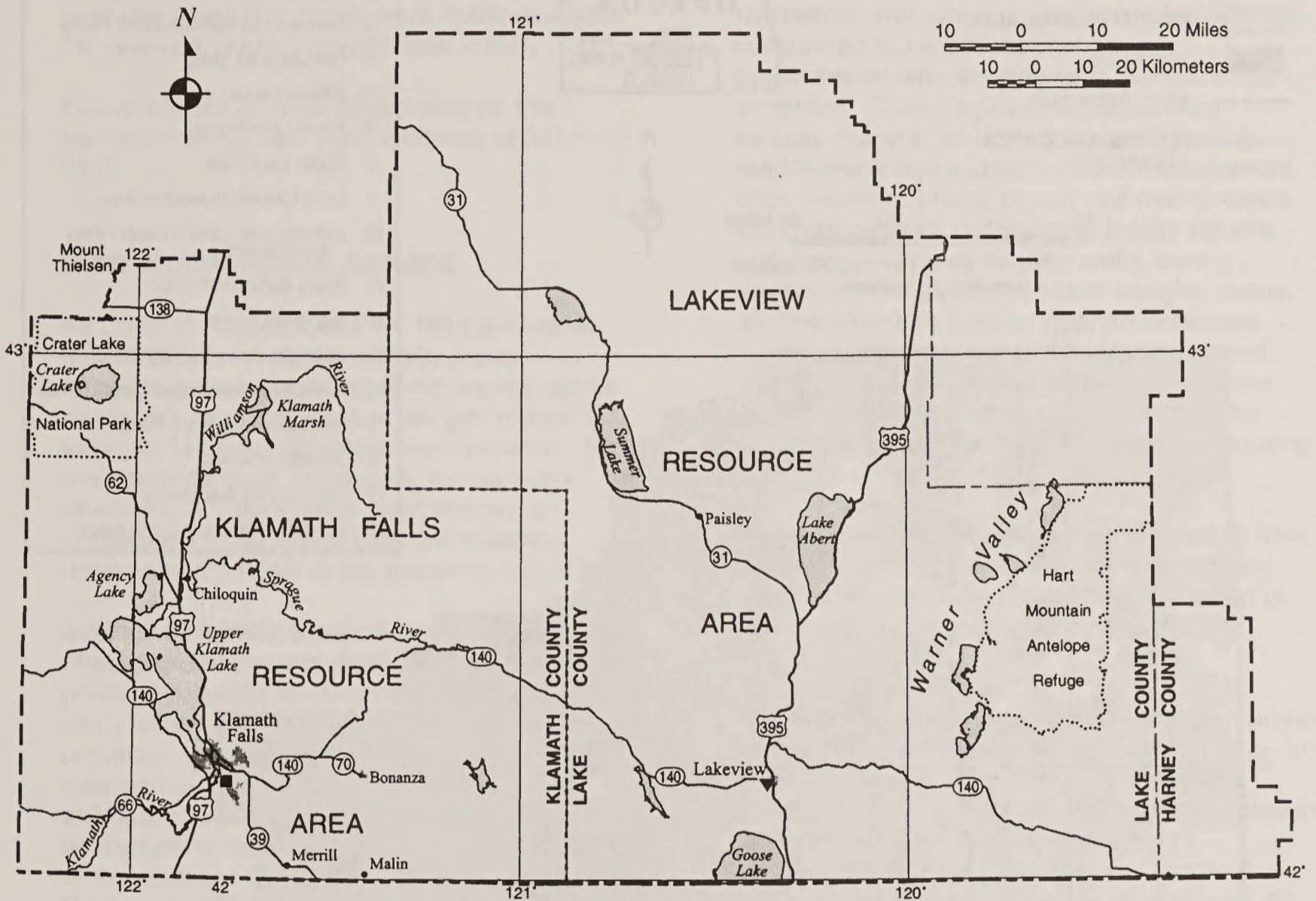
### Jurisdictional Land Transfer/Warner Lakes Management Framework Plan Amendment

The Lakeview District and Hart Mountain National Antelope Refuge (USFWS) initiated a joint-agency planning process in 1997 for a proposal to conduct a jurisdictional land transfer between the two agencies. The lands are located in south central Lake County, Oregon, along the south and west boundaries of the refuge (figures 1 and 2). The action would transfer management of approximately 12,880 acres of BLM-administered lands to the USFWS and approximately 7,870 acres of USFWS-administered lands to the BLM.

Three public scoping meeting were held in fall 1997. An inter-agency draft planning/EA document was prepared and circulated for public comment. Only a few comments were received. Prior to the completion of the final plan amendment, legislation authorizing the transfer was signed by the President in late 1998. This legislation removed the need to complete the planning process and specified that:

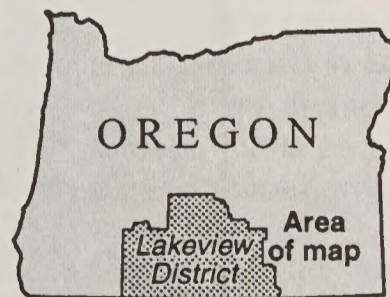
*1) all BLM lands transferred to the USFWS would be managed in accordance with the USFWS plan (i.e. no livestock grazing; lands withdrawn from mineral entry).*

U.S. DEPARTMENT OF THE INTERIOR  
 Bureau of Land Management  
 Lakeview District  
**FIGURE 1 - GENERAL LOCATION MAP**  
 1999



**LEGEND**

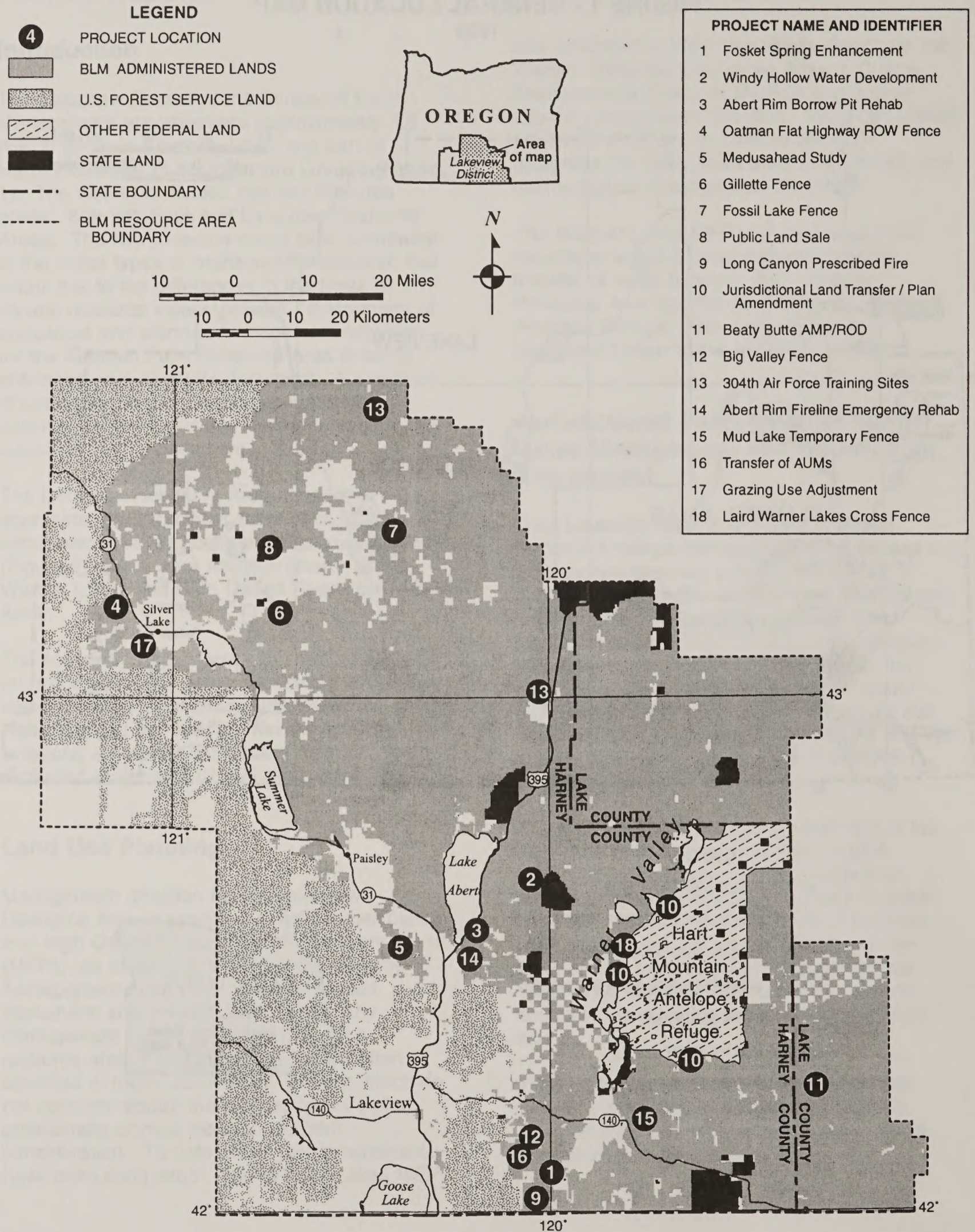
- ▼ BLM DISTRICT OFFICE
- BLM RESOURCE AREA OFFICE
- - - BLM DISTRICT BOUNDARY
- ..... BLM RESOURCE AREA BOUNDARY
- · - · - STATE BOUNDARY
- (97)— U. S. HIGHWAY
- (39)— STATE HIGHWAY



U.S. DEPARTMENT OF THE INTERIOR  
 Bureau of Land Management  
 Lakeview District

**FIGURE 2 - LAKEVIEW RA PROJECT LOCATIONS**

1999



**LEGEND**

- 4** PROJECT LOCATION
- BLM ADMINISTERED LANDS
- U.S. FOREST SERVICE LAND
- OTHER FEDERAL LAND
- STATE LAND
- STATE BOUNDARY
- BLM RESOURCE AREA BOUNDARY

**PROJECT NAME AND IDENTIFIER**

- 1 Fosket Spring Enhancement
- 2 Windy Hollow Water Development
- 3 Abert Rim Borrow Pit Rehab
- 4 Oatman Flat Highway ROW Fence
- 5 Medusahead Study
- 6 Gillette Fence
- 7 Fossil Lake Fence
- 8 Public Land Sale
- 9 Long Canyon Prescribed Fire
- 10 Jurisdictional Land Transfer / Plan Amendment
- 11 Beaty Butte AMP/ROD
- 12 Big Valley Fence
- 13 304th Air Force Training Sites
- 14 Abert Rim Fireline Emergency Rehab
- 15 Mud Lake Temporary Fence
- 16 Transfer of AUMs
- 17 Grazing Use Adjustment
- 18 Laird Warner Lakes Cross Fence

2) approximately 11,020 acres of BLM-managed lands in the Guano Creek Wilderness Study Area (WSA) and other lands along Guano Creek would be managed in accordance with the refuge plan (i.e. no livestock grazing).

3) all USFWS lands transferred to the BLM would be managed in accordance with BLM land use plans (i.e. lands were made available for livestock grazing and mineral entry).

Persons wishing more information on this transfer may contact Paul Whitman at 541-947-6110.

### **Plan Maintenance Actions**

43 Code of Regulations Part 1610.5-4 states that "resource management plans and supporting components shall be maintained as necessary to reflect minor changes in data" or to refine "a previously approved decision". Plan maintenance does not require formal public involvement, interagency coordination, or preparation of an EA or EIS, but must be documented as part of the planning record.

**Interior Columbia Basin Ecosystem Management Project (ICBEMP):** continues to produce scientific documents related to this study area. To a large degree, these documents do not represent new data or information, but rather a compilation and/or analysis of existing data across the broad landscape of the Columbia River basin and part of the northern Great Basin within eastern Oregon and Washington, northern Nevada, Idaho, western Montana, and western Wyoming.

This data is incorporated into existing land use plans via the plan maintenance process. In addition, a process has been developed to incorporate this information, when appropriate, into on-going project planning pending the completion of the *ICBEMP Eastside EIS*.

**Rangeland Management:** minor adjustments have been made over time in the implementation of the rangeland management program. These adjustments are periodically reported in the form of *Rangeland Program Summary Updates*. This has been done as separate mailers prior to 1993. Since 1993,

they have been published as part of this annual planning update document. This update is discussed further in the Rangeland Program Summary Update section of this document.

**Road, Recreation, and Range Improvement, and Other Facility Maintenance Actions:** the day-to-day, routine maintenance of road, recreation, and range improvement facilities are considered to be actions that are in conformance with existing land use plans, as amended. These types of activities may include, but are not limited to: road grading, road surface replacement, culvert replacement, ditch cleaning, bridge repair, trail maintenance, sign replacement, recreational facility repairs, and maintenance of existing wells, spring developments, pipelines, water troughs, dams, allotment/pasture fences, riparian enclosure fences, wildlife guzzlers, fish structures, and similar structures. Some of the maintenance responsibilities for these structures may be conducted by livestock permittee or cooperating agencies under cooperative agreements.

These types of activities are considered to have minor environmental effects and are typically categorically excluded from the preparation of National Environmental Policy Act (NEPA) documents.

The amount and type of maintenance performed varies from year-to-year and is conducted on an as-needed basis. Currently, the Lakeview Resource Area (and/or its cooperators) maintain approximately 2500 miles of roads, 11 recreational facilities, 400 miles of fence, 8 spring developments, 43 miles of pipelines, 23 wells, 45 reservoirs, 76 waterholes, and 28 wildlife guzzlers.

**Draft Land Health Standards:** the Standards for Land Health for Public Lands in Oregon and Washington were developed in consultation with Resource Advisory Councils and Provincial Advisory Committees, tribes and others. These standards meet the requirements and intent of 43 Code of Federal Regulations, Subpart 4180 (Rangeland Health) and are intended to provide a clear statement of agency policy and direction for those who use public lands, and for those who are responsible for their management and accountable for their condition.

## **Lakeview Resource Area Planning Update**

The objectives of the land health standards are to promote healthy sustainable ecosystems; to accelerate restoration and improvement of public lands to properly functioning conditions and to provide for the sustainability of industry and communities that are dependent upon productive, healthy public lands. These standards are similar to those developed in the last several years for livestock grazing practices. The final version of the standards are expected to be approved in the near future.

The Lakeview Resource Area is currently in the process of evaluating the draft standards for conformance with our existing land use plans (as amended). The results of this evaluation will be reported in a future *Planning Update*.

## **Lakeview Resource Area Resource Management Plan (RMP)**

The BLM is required to monitor and evaluate existing land use plans at "appropriate intervals and standards" (43 Code of Federal Regulations Part 1610.4-9) as established by the District Manager. The appropriate interval for the *Warner Lakes and High Desert Management Framework Plans*, and *Lakeview Grazing Management Final Environmental Impact Statement* was set at five years. The evaluation process is intended to identify potential issues or new information that may require the initiation of the plan amendment or revision process. These plans were formally evaluated in 1986, 1991, and most recently in 1997. The results of this recent plan evaluation are available upon request.

The Interior Columbia Basin Ecosystem Management Project and the Rangeland Standards and Guidelines address many of the current management issues on the Lakeview Resource Area. However, they do not address all potential management issues needing to be examined within the resource area. One of the main findings of the evaluation is the need to address wild and scenic river eligibility, Areas of Critical Environmental Concern (ACEC), Research Natural Areas (RNAs), caves, off-highway vehicle use, and visual resources in a

future Resource Management Plan (RMP) .

The resource area has recently initiated a RMP. This planning effort will incorporate the expected requirement from the *ICBEMP ROD* to conduct a Sub Basin Review. The Sub Basin Review process is intended to be a highly collaborative mid-scale analysis of resource conditions at a sub basin scale. This will provide a unique opportunity for other Federal, State, and local agencies, and tribal governments to be involved in the planning process.

It is expected that an *Analysis of the Management Situation (AMS)* document will be prepared based on sub basin and other logical boundaries. The AMS will be made available for public review in FY2000. Tribal consultation and public scoping has already been initiated and will continue throughout the process.

Issues that have been identified for analysis in the RMP include:

- 1) *What areas, if any should be designated and managed as special management areas?*
- 2) *How can upland ecosystems be managed and restored to achieve desired future conditions?*
- 3) *How should riparian areas and wetlands be managed to protect and restore natural functions?*
- 4) *How should vehicle access be managed?*
- 5) *How should lands be managed to meet the needs of local communities and Native American Tribes?*

The resource area staff have completed one Area of Critical Environmental Concern (ACEC) and one Wild and Scenic River evaluation report and are near completion on an additional ACEC evaluation report. These evaluations can be made available upon request. These documents will also soon be available on the district webpage at <http://www.or.blm.Lakeview>. To provide comments or request further information on this planning effort contact Dwayne Sykes, RMP Team Leader, at 541-947-



### **Beaty Butte Allotment Management Plan (AMP) Implementation**

The *Beaty Butte AMP and EIS* was completed in 1998. It covers management on about 500,000 acres of public land and 40,000 acres of private land located east of Adel in southeastern Lake and southwestern Harney Counties, Oregon (Figure 2).

To date, a number of prescribed fires and new pasture fences have been completed or in the process of implementation. Persons wishing more information may contact Les Boothe at 541-947-6141.

### **304<sup>th</sup> Air Rescue Squadron Training Sites**

In the spring of 1995, the 304th Air Force Rescue Squadron approached several BLM Districts and National Forests in Oregon and Washington about a proposal to locate numerous helicopter rescue training landing sites on public lands. Two sites were proposed within the Lakeview Resource Area. The BLM provided numerous comments on the proposal and suggested an alternative site. The Air Force adopted the alternate site (Figure 2)

The two proposed sites (Alkali Lake landing strip and Peters Creek Sink Gravel Pit) are approximately 1-2 acres in size. Training exercises would typically involve 2-3 helicopters deploying and recovering rescue personnel at the site using a hoist/cable, fast rope, rappelling, and/or rope ladder. Helicopters may land or hover over a site for 15-30 minutes, possibly as often as once a week. About 40% of the training exercises would occur during the day and 60% at night. The proposal does not include any ground disturbance, facility construction, major vegetation clearing, or need for ground vehicle access.

The BLM and the Forest Service cooperated in the preparation of an EA in late 1998. The Forest Service acted as the lead agency. The EA was made available for public review in late December 1998. A total of 3 comments were

received which mainly dealt with use of specific Forest Service sites. The BLM completed a Finding of No Significant Impact (FONSI) covering the use of sites on BLM-administered lands. The Forest Service has prepared a separate FONSI and decision document for lands it administers. The BLM has completed a memorandum of understanding (MOU) with the Air Force to formalize an agreement over the use of the sites on BLM-administered lands.

Those desiring more information on the action may contact Paul Whitman or Dan Stewardson at 541-947-2177.

### **Ecological Site Inventory**

An Ecological Site Inventory (ESI) has been ongoing within the Lakeview Resource Area for about 11 years and will continue this year. This inventory, performed in cooperation with the Natural Resources Conservation Service (NRCS), gathers information about soil and vegetation conditions. The BLM has the lead responsibility for collecting data on BLM-administered lands while the NRCS is responsible for private and some Forest Service lands within Lake, Harney Counties. This inventory data is indispensable in providing basic information on soil types, vegetation/range conditions, wildlife habitat conditions, and for making resource management decisions.

There are about 200 U.S. Geological Survey quadrangle (quad) maps contained within the survey area. To date, about 125 quads in southern/central Lake County and about 30 in southwestern Harney County have been mapped. It is expected that about 20 more quads will be mapped this field season in northern Lake County.

The NRCS is currently in the process of publishing the soil data in paper map form for the southern third of Lake County. Mapping for Harney County, though complete, has not been published to date. Copies of the soil maps are available for viewing at local NRCS Offices.

The NRCS has also completed the digitizing of the southern Lake County soil data for use in geographic information system (GIS). The Burns District has recently completed digitizing

## **Lakeview Resource Area Planning Update**

the soil data for all of Harney County. Vegetation, range condition, and sample site location data are in the process of being input into the GIS. For more information on these efforts, contact Paul Whitman at 541-947-6110.

### **Volunteer Activities**

Volunteers have contributed many thousands of hours of time helping to conduct surveys and construct projects within the district, resulting in hundreds of thousands of dollars in savings to the government. Volunteers assist the BLM in accomplishing many things that otherwise could not be done due to budget limitations. A couple of student volunteer programs currently being used include the Apprenticeship in Science and Engineering program and the Resource Apprenticeship Program for Students (RAPS). There continues to be many opportunities for individuals or groups to volunteer time and experience. Some examples of the types of help we have obtained in the past and are looking for in the future include:

- \* Recreation: camp site hosts, river ranger patrols, and adopt a trail or campsite and help maintain it.
- \* Fish and wildlife: assist in conducting surveys, monitoring, and habitat restoration.

- \* Archaeology and history: assist in surveys and inventory.
- \* Wild horses: assist in herd monitoring.
- \* Engineering and surveying: assist in constructing and maintaining facilities, signs, roads, and trails.
- \* Range and forest management: assist in range improvement projects, tree plantings, and research.
- \* Administrative support: assist office staff in administrative tasks such as typing, word processing, and answering phones.

There are other possibilities depending on your specific interests, experience, or desires. If you have time, energy, experience, enthusiasm, or interest we can use your help. If you are interested in any of the opportunities above, or have other ideas contact Scott Senter at 541-885-4141.

# Plan Implementation Summary

## Introduction

This section provides a general overview of the Lakeview Resource Area's natural resource management programs. General program descriptions are followed by the recent major accomplishments and a listing of the work planned for the remainder of this fiscal year.

## Botanic Resource Management

The botany program ensures that native plants and their habitats, including special status species (i.e. Federal or state-listed) are protected in the operation of the BLM's multiple use programs. This is achieved by conducting plant surveys on public lands, including site-specific project clearance surveys for sensitive/cultural plants, monitoring population trends of sensitive species (*Gratiola heterosepala*, *Astragalus tetraopterus*, *Ivesia rhypara* var. *rhypara*, *Cymopterus nivalis*, *Pedicularis centranthera*, and *Eriogonum prociduum*) and developing habitat management plans to ensure their protection (*Gratiola heterosepala*, *Eriogonum crosbyae*, *Ivesia rhypara* var. *rhypara*, *Rorippa columbiana*, and *Eriogonum cusickii*). This also involves participating in impact analyses for project proposals, allotment evaluations, and rangeland standards and guides assessments.

Program staff also participate in a variety of public outreach/education programs such as "Celebrate Wildflowers", Resources and People (RAP) camp, state/county fair exhibits, professional conference presentations, and botany field trips. For further information on this program contact Lucile Housely at 541-947-6131.

\* A number of botanical clearances were completed in FY98 in support of a variety of proposed projects including firewood cutting areas, fences, rights-of-ways, and prescribed fire sites. Over 40,000 acres of clearances have been completed in the Beaty Butte allotment in preparation for several prescribed fire

projects.

\* All sensitive plant sites have been located with global positioning system technology (GPS) and monitoring will continue (approximately 175 acres total). This includes:

1) Monitoring existing Conservation Agreement areas for *Eriogonum cusickii* and *Cymopterus nivalis* and conflicts with off-highway vehicle use and monitoring existing Conservation Agreement areas for *Rorippa columbiana*.

2) Continuing to monitor and write Conservation Agreements for *Ivesia rhypara rhypara* and *Eriogonum crosbyae* sites.

3) Continuing monitoring studies and correcting erosion problems at *Gratiola heterosepala* sites.

4) Setting up monitoring techniques to evaluate grazing impacts on *Eriogonum prociduum* in a recently created study enclosure in the Elk Butte area and monitoring other locations of this species.

5) Repaired an existing enclosure fence and attempted reintroduction of *Plagiobothrys salsus* to an area of historic occurrence as part of a cost-share project with the Oregon Native Plant Society. This site will be monitored in the future.

6) Revisited 2 known sites of *Symphoricarpos longifolius* and will search for new populations.

7) Photographed and mapped one disjunct population of *Opuntia fragilis*. Contacted private land owners and U.S. Forest Service for information on other possible locations.

\* Continued monitoring of Fisher Canyon prescribed fire (with assistance from The Nature Conservancy) and

## Lakeview Resource Area Planning Update

other recent prescribed/wild fire areas including Dingo Fire, Devil's Garden WSA Fire, Flat Fire, Spaulding Burn, Stud Horse Burn, and Long Canyon Burn.

- \* Will continue to consult with Native American tribes concerning culturally important plants and the effects of fire on these plants. Also developing a plant identification guide.
- \* Will continue inventory of cryptobiotic crusts and development of a forb plant list for use in the Ecological Site Inventory (ESI).
- \* Initiated a study of plant dynamics and tree classes within the Lost Forest ACEC/RNA with the Clackamas Community College as a challenge cost share project.
- \* Will conduct a plant inventory along the Lake Abert shoreline as a challenge cost share project.
- \* Worked with an Oregon State University Researcher on *Mimulus latidens* and *M. evanesans* as a challenge cost share project.
- \* Continue to assist in the riparian vegetation portion of the on-going Proper Functioning Condition for streams and wetlands.
- \* Completed botanical portion of wild and scenic river inventories of area stream corridors (refer also to the "Wild and Scenic Rivers" section of this document).
- \* Completed a review of existing ACEC/RNAs management plans and an analysis of botanical values within potential ACEC/RNA nominations in preparation for the upcoming RMP (refer also to the "Areas of Critical Environmental Concern" section of this document).

- \* Will continue to develop predominantly native seed mixes for use in site rehabilitation work and erosion control for such projects as mine land and gravel pit reclamation, and road/powerline rights-of-way, and wildfire rehabilitation.

## Noxious Weed Management

The encroachment of noxious weeds across the resource area is reducing resource values of native plant communities and adjacent agricultural croplands, rendering habitats unusable by some wildlife, decreasing property values, reducing biological diversity, and increasing the economic burden to maintain recreation and wilderness areas. Over the last several years, the noxious weed management program has been more assertive in inventory, management, and coordination with other agencies and adjacent landowners. More information on the Noxious Weed Management Program can be obtained by contacting Erin McConnel at 541-947-6133.

- \* Continued noxious weed control program through a contract which targeted treatment of numerous sites in Lake and Harney Counties totalling approximately 200 acres.
- \* Continued to develop partnerships and support of the Warner Basin Working Group as part of a cooperative effort to develop the Warner Basin Weed Management Area Plan with private landowners, other Federal agencies, state, and county governments.

## Cultural/Paleontological Resource Management

The cultural and paleontological programs identify, plan the appropriate use of, and manage cultural and paleontological resources on public land. These programs must comply with federal and state law governing preservation, as well as the principles of multiple use. The programs strive to protect

these resources for scientific and research purposes, as well as for future generations.

In addition to routine project clearances conducted prior to ground disturbing activities, the Lakeview Resource Area has used as many as five archaeological field school programs in a given year to collect this type of resource data. This provides field research experience to college students while substantially reducing data collection costs to the government.

The University of Nevada (Reno), University of Oregon, and South Dakota School of Mines all conducted field schools in the resource area in FY98 and FY99 which emphasized cultural clearance work in the Beaty Butte allotment, Fossil Lake area, several mineral leasing areas, and other portions of the resource area.

Proposed projects are also routinely coordinated with tribal governments including the the Klamath Tribes, Ft. Bidwell Paiute Tribe, Burns Paiute Tribe, and the Confederated Tribes of the Warm Springs Reservation, to try to ensure that tribal interests are not impacted. Over the past several years, consultation has occurred regarding the existence of, and potential management impact on, culturally important plant species. For further information contact Bill Cannon at 541-947-6111.

## Forestry Management

Approximately 15,000 acres of ponderosa pine transitional forest exists in the Lakeview Resource Area. It serves as a transitional zone between the more heavily forested Fremont and Deschutes National Forests to the west and the shrubland/high desert habitats that comprise the majority of the resource area lands. In addition, several hundred thousand acres of juniper woodlands occur on the Lakeview Resource Area. None of these lands are classified as commercial forest land. The forestry/woodland program focuses mainly on making special forest products available to the public on an as-needed basis.

Numerous permits were issued in FY98 and FY99 for firewood, boughs, posts, and poles, primarily from juniper woodlands. Firewood permits constitute the majority of all permits

issued. Timber trespasses (illegal timber cutting) occasionally happen and are investigated whenever they occur. Further information concerning the forestry management program can be obtained by contacting Ken Tillman at 541-947-6112.

## Fire/Aviation Management

The BLM's fire and aviation programs are important support programs. Fire management has two major foci: suppressing wild fires and conducting prescribed burns to reduce fuel buildup and benefit wildlife habitat, range conditions, and other resources. Across the resource area, approximately 20 wild fires totalling about 602 acres were suppressed in FY98. The aviation program supports various activities in a given year including fire fighting and wild horse/wildlife surveys.

- \* A district-wide Fire Management Plan (FMP) was completed in FY98. It integrates wildfire management operations involving suppression, fuels treatment and prescribed burning for hazard reduction and ecosystem restoration/maintenance from the current land management plans. Contact John Glenn at 541-947-6271 for further information.

- \* Prescribed fire plans for a number of burn units identified in the *Beaty Butte AMP/ROD* have been completed and about 3,000 acres were burned in FY98. An additional 6,000 acres will be burned in fall 1999. Contact Matt Webb at 541-947-6147 for more information.

- \* Prescribed fire plan for the Long Canyon area (EA#OR-010-98-10) was completed. Burning will occur in fall 1999. Contact Matt Webb at 541-947-6147 for more information.

## Hazardous Materials Management

This program focuses on protecting public health and safety and the environment. A major

## **Lakeview Resource Area Planning Update**

part of the program involves the investigation and cleanup of public land sites contaminated with hazardous materials in conformance with federal and state laws. For further information contact Jim Peterson at 541-947-6109.

## **Lands, Realty, and Road Management**

These programs support other BLM resource management programs and authorize specific land uses by the public. These actions include specific land use authorizations, direct land sales, land acquisitions, control of unauthorized use and occupancy (trespass violations), transportation plan development and maintenance, road maintenance, and road closures. About 150-200 miles of roads are maintained annually (out of about 2,500 miles of existing BLM roads). Refer to the section on "Road, Recreation, and Range Improvement, and Other Facility Maintenance Actions" at the beginning of this document for further information on road maintenance activities.

Further information on these programs can be obtained by contacting Dan Stewardson (lands/realty) or Jim Platt (transportation) at 541-947-2177.

## **Law Enforcement**

The major emphasis of the law enforcement program continues to be the coordination of law enforcement efforts with local law enforcement agencies, the prevention of cultural resource destruction, protection of special forest products, and prevention of theft or destruction of public property. For further information contact Del Barton at 541-947-6138.

## **Minerals Management**

The minerals program focuses on administration of mining claims, mainly for sunstones; leasable minerals such as sodium and geothermal resources; and saleable minerals, such as sand and gravel on public lands. Major work performed in FY98 and continuing in FY99 includes continuing an abandoned mine land

inventory, processing minor gravel/rock sales, free use permits, etc., conducting mining compliance checks, and mining claim occupancy determinations. For further information contact Dennis Simontacchi at 541-947-6116 or Ken Tillman at 541-947-6112.

## **Recreation Management**

Public lands in the Lakeview Resource Area offer a wide variety of recreation opportunities. The program strives to provide quality recreation while protecting sensitive resources, expanding visitor services and interpretation, and enhancing outdoor recreation through partnerships. Initiatives such as the Back County Byways and Watchable Wildlife provide focus and funding to increase recreation opportunities.

A recreation map series has recently been completed and published for the north and south halves of the resource area. These maps are available to the public at all Oregon/Washington BLM offices, at local Forest Service offices, and local businesses in Christmas Valley, Summer Lake, Adel, and Plush. for a cost of \$4.00.

This program oversees the issuance of special or commercial recreation permits for such activities as wilderness therapy schools, hunting guide services, and special events like bicycle races. Approximately 11 existing recreational facilities are maintained on an annual basis. This includes such things as replacing or repairing visitor registration boxes and counters, picnic tables, signs, and pit toilets at Crack in the Ground, Christmas Valley Sand Dunes, Buck Creek, Highway Well Rest Area, Duncan Reservoir, and the Warner Wetlands.. For further information concerning the recreation program contact Trish Lindaman at 541-947-6136.

\* Continued construction of a scenic overlook of the Warner Wetlands ACEC, adjacent to Hart Mountain National Antelope Refuge. Four interpretive signs were installed, and a parking lot and short hiking trail were

constructed.

\* Provided increased law enforcement patrols of high use recreation areas during the summer months.

\* Remarked canoe trails in the Warner Wetlands between Stone Corral, Turpin, and Campbell Lakes with taller markers due to high water levels. A map showing the marked route is available upon request from the Lakeview District Office. A map showing designated vehicle routes, as well as those currently under water and impassable, is also available.

\*The Oregon Back Country Discovery Route, part of an off-highway vehicle route from Mexico to Canada, was established through the resource area. The route uses existing roads.

## **Special Areas Management**

### **Wild and Scenic Rivers**

In conjunction with the Fremont National Forest, five rivers within the resource area have been considered for potential eligibility for further study under the Wild and Scenic River Act over the last several years. The five rivers studied are Dairy Creek, South Fork of the Sprague River, Honey Creek, Little Honey Creek, and Deep Creek. Documents are available that contain preliminary findings, information as to the significance of the outstandingly remarkable values, and tentative classifications. Of the five rivers, only the BLM portion of Little Honey Creek and the Forest Service portions of South Fork of the Sprague River, and parts of Dairy and Deep Creeks were found eligible.

An inter-disciplinary team has recently completed an evaluation of all remaining water-related features within the Lakeview Resource Area for potential eligibility. Two additional stream segments were determined to be eligible through this evaluation: Twelve-Mile Creek and Guano Creek. The results of this effort will be used in the development of the Lakeview Resource Area Resource Management Plan (RMP). The evaluation is available upon

request and can also be found on the district's website (<http://www.or.blm.Lakeview>). For further information contact Trish Lindaman at 541-947-6136.

### **Wilderness**

In 1991, the BLM in Oregon completed the wilderness reporting process. This report recommended all or portions of 9 of the 12 wilderness study areas (WSAs) in the Lakeview Resource Area (totalling about 274,200 acres) be designated as wilderness. The report was signed by the Secretary of the Interior and has been forwarded to the President. However, until Congress acts on final wilderness designation for the State of Oregon, all 12 WSAs (totalling about 423,270 acres) will continue to be managed under the wilderness interim management policy so as not to impair their wilderness values. This includes conducting routine patrols, restricting vehicle use to existing roads/trails, and other interim measures. More information on wilderness management can be obtained by contacting Trish Lindaman at 541-947-6136.

### **Areas of Critical Environmental Concern (ACECs)/Research Natural Areas (RNAs)**

The resource area currently has 5 designated ACECs: Devil's Garden Lava Bed, Lost Forest/Sand Dunes/Fossil Lake, Lost Forest Research Natural Area (RNA), Warner Wetlands, and Lake Abert. Several of these areas overlap with existing WSAs. Only the Warner Wetlands and Lake Abert ACECs have a detailed management plan in place. Management of the other three areas is currently handled under the wilderness interim management policy. Implementation of the Warner Wetlands ACEC plan is described in other sections of this document.

Recent implementation of the Lake Abert ACEC plan includes a completion of approximately 3.5 miles of fence along the western shore to protect the riparian/shoreline zone. There has also been considerable interest in commercial harvest of brine shrimp by several parties. Regulation of harvest activities falls under the jurisdiction of the Oregon Department of Fish and Wildlife (ODFW). The BLM continues to coordinate with the ODFW on these harvest

## Lakeview Resource Area Planning Update

activities.

In preparation for the start of a RMP, the resource area staff have completed one interdisciplinary ACEC evaluation report covering a 1.1 million acre Pronghorn ACEC proposal submitted by the Oregon Natural Desert Association and have nearly completed an interdisciplinary ACEC evaluation process for all other lands within the resource area. Currently, 15 areas (nominated by the Natural Heritage Database, the public, Tribal members, and BLM staff) are being evaluated in detail to see if they meet the relevance/importance criteria for ACEC designation in accordance with the BLM 1613 ACEC planning guidance. The results of this evaluation are being documented in two separate reports. The *Pronghorn ACEC Evaluation Report* is currently available upon request. Both documents will also be made available on the district's webpage (<http://www.or.blm.Lakeview>) in the near future. Those areas found to meet the criteria will be considered for designation in the Lakeview Resource Area RMP.

Those desiring more information on ACECs or the evaluation process should contact Paul Whitman at 541-947-6110 or Lucile Housley at 541-947-6131.

### **Aquatic, Riparian, Wetland, and Wildlife Management**

About 140,000 acres of wetlands and 131 stream miles of riparian habitat occur within the resource area. A major portion of these are located in the Warner Valley. In 1989, the *Warner Lakes Plan Amendment for Wetlands and Associated Uplands* was completed, which addressed management in the Warner Wetlands and emphasized inventory of riparian conditions, revising grazing practices, and implementing wildlife habitat improvement projects.

Across the resource area, management activities also include water quality and riparian monitoring and implementation of habitat improvement projects, non-point source pollution control, water rights documentation,

and project maintenance.

The wildlife and fisheries (aquatic) programs ensure that fish, wildlife, and special status species habitats are protected or enhanced during the operation of the BLM's multiple use programs. These programs are coordinated with habitat management efforts of the Oregon Department of Fish and Wildlife (ODFW). This is achieved by conducting habitat/animal surveys, developing habitat management or other special plans to ensure protection of critical wildlife values, designing habitat enhancement projects, and monitoring. For further information contact Vern Stofleth (wildlife) at 541-947-6135, or Alan Munhall (aquatic/riparian) at 541-947-6120.

- \* Continue PFC assessment surveys on approximately 100,000 acres of wetland habitats.
- \* Continue a water rights inventory.
- \* Continue an aquatic habitat inventory including approximately 80 miles of stream temperature monitoring and 10 miles of Rosgen channel classification.
- \* Conduct a redband trout population study.
- \* Conduct a macroinvertebrate study on various spring sites in cooperation with Oregon State University.
- \* Continue to conduct aerial compliance surveys to insure that livestock are managed in accordance with the Warner Sucker Biological Opinion.
- \* Continue Foskett Dace habitat recovery project.
- \* Continue to participate in an on-going juniper woodland ecology study with Dr. Rick Miller, Oregon State University.
- \* Continue Warner Wetland habitat enhancement projects including prescribed fire and dike, headgate, and fence maintenance.



\* Continue to maintain big game and upland bird waterholes/guzzlers in cooperation with the Oregon Department of Fish and Wildlife.

\* Continue to cooperate with the Animal and Plant Health Inspection Service (APHIS), the ODFW, and several National Forests in the preparation of an annual animal damage control work plan covering the management of coyotes, and problem cougars and bears on public lands. APHIS is the responsible lead agency for the planning and implementation of this effort.

\* Initiated a sage grouse habitat use study in the Beaty Butte area in FY98 to document the effects of prescribed fire.

\* Began gathering and compiling of existing sage grouse data for use in preparation of a BLM-wide sage grouse conservation strategy plan.

## Wild Horse Management

Wild horse management focuses on managing two Wild Horse Herd Management Areas (HMA's), which are located in the Paisley Desert and Beaty Butte areas. However, some horses occur outside of these two designated herd management areas. The goal of the program is to keep horses within the herd management areas and to manage horse numbers at viable levels, while maintaining the natural habitat in an ecological balance.

Existing minimum and maximum herd numbers were established within exiting land use and herd mangement plans. For the Paisley HMA these herd numbers are 60 to 110 animals. For the Beaty Butte HMA the appropriate herd levels are 100 to 250 horses. Excess animals are gathered at various times and made available for adoption to the general public through the Adopt-a-Horse program. Management efforts also include monitoring horse numbers and range conditions in the herd management areas and inspecting adopted horse facilities.

The next horse gather is scheduled for August 1999 for the Beaty Butte herd. More information can be obtained by contacting Bob Hopper at 541-947-6140.

## Range Program Summary (RPS) Update

### Introduction

The Lakeview Resource Area administers livestock grazing activities on about 3.2 million acres. Each year, grazing licenses authorizing animal unit months (AUMs) are issued for about 125 public land allotments. A percentage of the grazing fees collected goes into the U.S. Treasury, but most is returned to the county or BLM district in which it originated to be used for range improvement projects designed to benefit wildlife and watershed resources while improving conditions for livestock grazing. The range program collects inventory data and monitors range conditions on public lands. Information on vegetation utilization levels and trend are collected and evaluated to determine whether allotment goals and objectives are being met.

A Range Program Summary (RPS) Update is published periodically to keep the public informed on progress made in implementing the range program as outlined in the existing land use plans (*Warner Lakes and High Desert Management Framework Plans*, as amended, *Lakeview Grazing Management EIS*, and *Record of Decision (ROD)*). The RPS Update includes information on the season of use and forage allocation by allotment. The ROD states that "adjustments will be made (to the number and location of range improvements) as funding levels change and as site specific examinations identify other resource considerations." It also states that the "list of improvements is subject to change after individual operators are consulted, AMP's developed, and the benefit/cost ratio analyzed."

Initial consultation and a benefit/cost ratio analysis was completed after publication of the ROD and resulted in changes in the list of projects proposed. This was reported in the first *RPS Update* published in fall 1982.

## **Lakeview Resource Area Planning Update**

However, operator consultation and economic analyses continue in response to new operators, changing economic conditions, and AMP development. These changes/adjustments have been reported periodically (along with range management program implementation progress) in subsequent *RPS Updates*. This was last published, in complete form, as part of the 1997 *Planning Update*.

Recent updates to the range management program are listed in the following section. The main changes that have occurred since the 1997 *Planning Update* was published relate to the completion of the *Beaty Butte AMP/ROD* and the implementation the *Rangeland Standards and Guidelines*. It is expected that a complete summary of the range management program implementation will be published as part of the *Analysis of the Management Situation (AMS)* prepared for the *Lakeview Resource Area RMP* within the next year.

## **Rangeland Standards and Guidelines**

Recently, *Standards for Rangeland Health and Guidelines for Livestock Grazing Management* were completed by the Southeastern Oregon Resource Advisory Council (RAC). These standards and guidelines will be implemented gradually over a 10-year period, generally by incorporation into future livestock grazing permit renewals and new permits at the time the permit is issued. The five standards include:

### **Standard 1 - Upland Watershed Function**

Upland soils exhibit infiltration and permeability rates, moisture storage, and stability that are appropriate to soil, climate, and landform.

### **Standard 2 - Riparian/Wetland Watershed Function**

Riparian-wetland areas are in properly functioning physical condition appropriate to soil, climate, and landform.

### **Standard 3 - Ecological Processes**

Healthy, productive, and diverse plant and animal populations and communities appropriate to soil, climate, and landform are supported by ecological processes of nutrient cycling, energy flow, and the hydrologic cycle.

### **Standard 4 - Water Quality**

Surface water and groundwater quality, influenced by agency actions, complies with State water quality standards.

### **Standard 5 - Native, Threatened and Endangered, and Locally Important Species**

Habitats support healthy, productive, and diverse populations and communities of native plants and animals (including special status species and species of local importance) appropriate to soil, climate, and landform.

*Standards and Guidelines Assessments* have been prepared for the following allotments to date:

Beaty Butte 0600 (1998)  
Vinyard Individual 0201 (1999)  
Hickey Individual 0202 (1999)  
Lane Plan II 0206 (1999)  
Lane Plan I 0207 (1999)  
Sagehen 0208 (1999)  
Round Mountain 0211 (1999)  
Rahilly-Gravelly 0212 (1999)  
O'Keefe Individual 0216 (1999)

Copies of these documents are available upon request.

## **Rangeland Projects**

This update contains a list of a number of projects, evaluations, and monitoring efforts have been completed in FY98 and FY99. In addition, existing projects, which include such things as waterholes, spring developments, pipelines, wells, and fences are monitored and maintained, as necessary. Further information concerning the range management program can

be obtained by contacting Bob Hopper at 541-947-6143.

\* Cattleguards: one completed in FY98 and one planned for construction in FY99.

\* Allotment Evaluations: one (Vineyard) planned for completion.

\* Allotment Monitoring: collect trend, forage utilization, and weather data on about 90+ allotments.

\* Allotment Management Planning: completed the *Beaty Butte AMP/ROD* in FY98.

\* Fencing: In FY98, initiated construction on about 4 miles of riparian protection (Cave Springs) fence along the southwestern shore of Lake Abert to implement the *Lake Abert ACEC Plan Amendment* (Allotment 0424). This fence and an additional 4 miles of fence (Cave Springs II Fence) were completed in FY99. Completed the Buckaroo Pass fence (8 miles) and the Guano Creek (5 miles) fences in the Beaty Butte (0600) allotment in FY99. Completed the Flagstaff Bench (3 miles) pasture division fence in the Bluejoint allotment (0512).

\* Constructed 7.6 miles of pipelines in allotments 0216, 0428, 0600, and 0700.

\* Prescribed Fire: prepared and implemented burn plans for prescribed fires in two burn units identified in the *Beaty Butte AMP/ROD* totalling about 3,000 acres. Additional burn plans covering about 6,000 acres have been prepared and will be implemented in fall 1999.

**Grazing Permit Renewals:** a total of six, 10-year grazing permits were renewed in FY98. A total of 17 out of 22 permits have been renewed thus far in FY99.

## 1998-99 Environmental Assessment (EA) Register

The National Environmental Policy Act (NEPA) requires that an environmental analysis of the potential effects be completed for any on-the-ground actions before their approval and that such analysis be open to the public. Those project proposals that are of sufficient magnitude or public controversy as to potentially require the preparation of an Environmental Impact Statement (EIS) are highlighted at the front of this document. The availability of EAs and EISs are made known through the publication of legal notices and, in some cases, news releases in local news papers. The Lakeview Resource Area routinely publishes these notices in the *Lake County Examiner* (Lakeview, OR) and occasionally uses the *Herald and News* (Klamath Falls, OR), *The Bulletin* (Bend, OR), and the *Burns Times/Herald* (Burns, OR), depending on where the proposed project is located. The Lakeview Resource Area staff has recently analyzed or initiated several proposed actions requiring the preparation of EAs. The locations of on-going project EAs are shown on map 2. This EA list and location map has also recently been posted on the Lakeview District's webpage at <http://www.or.blm.Lakeview>. This list and map will be updated regularly in the future.

To receive a copy of an EA, please submit a written request to the district office, identifying the EA by register number and project name. Please let us know of your interest in an EA as early as possible to give the staff time to fully consider your input. In addition, future environmental documents will soon be made available on the Lakeview District's webpage at <http://www.or.blm.Lakeview>. Contact Paul Whitman (Ph: 541-947-6110; mail address: [pwhitman@or.blm.gov](mailto:pwhitman@or.blm.gov)) for further information.

Insert EA register here

## SCHEDULE OF RECENT AND PROPOSED ENVIRONMENTAL ASSESSMENTS

BUREAU OF LAND MANAGEMENT \* LAKEVIEW DISTRICT \* HC 10 BOX 337 \* LAKEVIEW, OR 97630  
PHONE NUMBER: (541) 947-2177

| LAKEVIEW RESOURCE AREA |   |  |                          |                                  |                   |                 | June 1999 |  |
|------------------------|---|--|--------------------------|----------------------------------|-------------------|-----------------|-----------|--|
| MAP NO.                | TITLE AND PROJECT DESCRIPTION   | LOCATION   | SPECIAL AREA(S) AFFECTED | STATUS OF ANALYSIS               | DECISION DATE     | CONTACT PERSON  |           |  |
| 1                      | <b>FOSKETT SPRING ENHANCEMENT</b> (EA#OR-010-95-03) - Create instream habitat and stabilize bank soils for Fosskett Speckled Dace.              | About 8 miles southeast of Adel.                             | T & E species habitat    | EA on hold.                      |                   | Alan Munhall    |           |  |
| 2                      | <b>WINDY HOLLOW WATER DEVELOPMENT</b> (EA#OR-010-98-02) - Construct a well, pipeline, and develop spring.                                       | Allotment 517  |                          | EA on hold.                      |                   | Dave Pacioretty |           |  |
| 4                      | <b>OATMAN FLAT HIGHWAY RIGHT-OF-WAY FENCE</b> (EA#OR-010-98-04) - Construct about 4 miles of fence along Hwy. 31 ROW to keep cows off the road. | Allotment 705 northwest of Silver Lake, OR.                  |                          | EA completed February 19, 1999.  | April 8, 1998.    | Dave Pacioretty |           |  |
| 5                      | <b>MEDUSAHEAD STUDY</b> (EA#OR-010-98-06) - Seed and treat about 1/8 acre site on an experimental basis.  | West of Valley Falls, OR.                                    |                          | EA completed September 24, 1998. | October 30, 1998. | Dick Mayberry   |           |  |
| 6                      | <b>GILLETTE FENCE</b> (EA#OR-010-98-07) - Construct about .75 miles of fence to create 2 pastures.  | Allotment 102  |                          | EA completed July 6, 1998.       | August 20, 1998.  |                 |           |  |
| 7                      | <b>FOSSIL LAKE FENCE</b> (EA#OR-010-98-08) - Construct about 1.8 miles of fence to exclude grazing on private lands.                            | Allotment 10103  |                          | EA completed December 4, 1998.   | January 12, 1999. | Theresa Romasko |           |  |
| 8                      | <b>PUBLIC LAND SALE</b> (EA#OR-010-98-09) - Public sale of 320 acres in Christmas Valley area.  | T.25S., R.18E., Sec. 32: W1/2.                               |                          | EA completed October 14, 1998.   | January 7, 1999.  | Dan Stewardson  |           |  |
| 9                      | <b>LONG CANYON PRESCRIBED FIRE</b> (EA#OR-010-98-10) - Burn about 3,000 acres for fuel reduction and ecosystem management purposes.             | South of Adel, OR; Allotment 0211.                           |                          | EA completed August 31, 1998.    | April 20, 1999.   | Matt Webb       |           |  |
| 12                     | <b>BIG VALLEY FENCE</b> (EA#OR-010-98-10) - Construct about 3.5 miles of fence.   | Allotment 0207; Big Valley Pasture; T.40S, R.22E, Secs. 1-4. |                          | EA started September 1998.       |                   | Les Boothe      |           |  |

Lakeview Resource Area Planning Update

|           |  |   |                                   |                                 |                    |                 |
|-----------|--|---|-----------------------------------|---------------------------------|--------------------|-----------------|
| <b>14</b> | <b>ABERT RIM FIRELINE EMERGENCY REHAB</b><br>(EA#OR-010-99-01) - Rehabilitate about 0.5 mile of catlike with hand tools and reseed with native seed. | Base of Abert Rim.  | Abert Rim WSA.                    | EA completed November 10, 1998. | November 10, 1998. | Trish Lindaman  |
| <b>15</b> | <b>MUD LAKE TEMPORARY FENCE</b> (EA#OR-010-99-02) - Construct about 0.25 mile of temporary electric fence.   | Southwest corner of Mud Lake; T.39S., R.25E., Sec. 1.             |                                   | EA completed March 18, 1999.    | April 26, 1999.    | Les Boothe      |
| <b>16</b> | <b>TRANSFER OF AUMS</b> (EA#OR-010-99-03) - Transfer 252 AUMs from Sagehen allotment to Fisher Lake allotment.                                       | Sagehen (0208) and Fisher Lake (0222) Allotments.                 |                                   | EA completed April 7, 1999.     |                    | Les Boothe      |
| <b>17</b> | <b>GRAZING USE ADJUSTMENT</b> (EA#OR-010-99-04) - Transfer AUMs from Ward Lake to Silver Creek-Bridge Creek allotment.                               | Ward Lake (0704) and Silver Creek-Bridge Creek (0700) Allotments. |                                   | EA started March 1999.          |                    | Theresa Romasko |
| <b>18</b> | <b>ABERT RIM BORROW PIT REHAB</b> (EA#OR-010-99-05) - Bury deer carcasses and emergency rehab of access road built in trespass.                      | Abert Rim borrow pit; Southeast side of Lake Abert..              | Abert Rim WSA.                    | EA completed May 17, 1999.      | May 27, 1999.      | Trish Lindaman  |
| <b>19</b> | <b>LAIRD WARNER LAKES CROSS FENCE</b> (EA#OR-010-99-06) - Construct about 0.5 miles of fence to reduce livestock concentration.                      | Allotment 0507.   | Adjacent to Warner Wetlands ACEC. | EA completed May 17, 1999.      | June 30, 1999      | Dave Pacioretty |

# Mailing List Update for the Lakeview Resource Area

In our effort to serve you more efficiently we continually update our mailing list. Because the BLM is involved in many different management activities and material is made available to you at no cost, we would appreciate it if you would take a minute to make sure we have your correct name and address. Listed below are the different mailing lists that are used when a project is proposed and public input sought. After deciding which types of activities you would be interested in receiving information, mark the appropriate space provided below and **mail to us by October 1, 1999**, at the address below. If you have changed your name or address please supply us with your old name or address. **IF YOU ARE NO LONGER INTERESTED IN LAND MANAGEMENT ISSUES WITHIN THE LAKEVIEW DISTRICT, PLEASE LET US KNOW AND WE WILL REMOVE YOU FROM OUR MAILING LIST.** Thank you for helping us keep our mailing costs down.

## Planning

Land Use Plan Updates (like this document) \_\_\_\_\_  
Lakeview Resource Area Resource Management Plan \_\_\_\_\_

## Resource Management

Recreation \_\_\_\_\_  
Off-Highway Vehicles (OHVs) \_\_\_\_\_  
Cave Management \_\_\_\_\_  
Range Management \_\_\_\_\_  
Cultural/Paleontological Resource Management \_\_\_\_\_  
Hydroelectric Energy Management \_\_\_\_\_  
Geothermal Energy Management \_\_\_\_\_  
Mineral Management \_\_\_\_\_  
Fish and Wildlife Management \_\_\_\_\_  
Sensitive/Threatened and Endangered Fish and Wildlife Management \_\_\_\_\_  
Fire Management (includes prescribed fire) \_\_\_\_\_  
Botany Management \_\_\_\_\_  
Sensitive/T&E Plant Management \_\_\_\_\_  
Noxious Weed Management \_\_\_\_\_  
Wild Horse Management \_\_\_\_\_  
Areas of Critical Environmental Concern \_\_\_\_\_  
Wilderness Management \_\_\_\_\_  
Wild and Scenic River Management \_\_\_\_\_  
Wetland/Riparian Area Management \_\_\_\_\_  
Forest Management (includes forest health/timber sales) \_\_\_\_\_  
Lands/Right-of-Ways/Roads \_\_\_\_\_  
Hazardous Waste Management \_\_\_\_\_

\_\_\_\_\_ Please remove my name from all mailing lists

\_\_\_\_\_ Please change my name and/or address to:

New Name/Address: \_\_\_\_\_  
\_\_\_\_\_  
\_\_\_\_\_

Old Name/Address: \_\_\_\_\_  
\_\_\_\_\_  
\_\_\_\_\_

**Lakeview Resource Area Planning Update**

In our effort to have you more actively participate in our planning process, we are providing you with a mailing list of resource areas within the Lakeview District. This mailing list is intended to provide you with information regarding the various types of activities that are being conducted in the resource areas. We would like to have your contact information and address to be able to contact you when a project is proposed and public input is needed. This mailing list is intended to provide you with information regarding the various types of activities that are being conducted in the resource areas. We would like to have your contact information and address to be able to contact you when a project is proposed and public input is needed. This mailing list is intended to provide you with information regarding the various types of activities that are being conducted in the resource areas. We would like to have your contact information and address to be able to contact you when a project is proposed and public input is needed.

| Resource Area | Planning | Management | Monitoring |
|---------------|----------|------------|------------|
| 1             |          |            |            |
| 2             |          |            |            |
| 3             |          |            |            |
| 4             |          |            |            |
| 5             |          |            |            |
| 6             |          |            |            |
| 7             |          |            |            |
| 8             |          |            |            |
| 9             |          |            |            |
| 10            |          |            |            |
| 11            |          |            |            |
| 12            |          |            |            |
| 13            |          |            |            |
| 14            |          |            |            |
| 15            |          |            |            |
| 16            |          |            |            |
| 17            |          |            |            |
| 18            |          |            |            |
| 19            |          |            |            |
| 20            |          |            |            |
| 21            |          |            |            |
| 22            |          |            |            |
| 23            |          |            |            |
| 24            |          |            |            |
| 25            |          |            |            |
| 26            |          |            |            |
| 27            |          |            |            |
| 28            |          |            |            |
| 29            |          |            |            |
| 30            |          |            |            |
| 31            |          |            |            |
| 32            |          |            |            |
| 33            |          |            |            |
| 34            |          |            |            |
| 35            |          |            |            |
| 36            |          |            |            |
| 37            |          |            |            |
| 38            |          |            |            |
| 39            |          |            |            |
| 40            |          |            |            |
| 41            |          |            |            |
| 42            |          |            |            |
| 43            |          |            |            |
| 44            |          |            |            |
| 45            |          |            |            |
| 46            |          |            |            |
| 47            |          |            |            |
| 48            |          |            |            |
| 49            |          |            |            |
| 50            |          |            |            |
| 51            |          |            |            |
| 52            |          |            |            |
| 53            |          |            |            |
| 54            |          |            |            |
| 55            |          |            |            |
| 56            |          |            |            |
| 57            |          |            |            |
| 58            |          |            |            |
| 59            |          |            |            |
| 60            |          |            |            |
| 61            |          |            |            |
| 62            |          |            |            |
| 63            |          |            |            |
| 64            |          |            |            |
| 65            |          |            |            |
| 66            |          |            |            |
| 67            |          |            |            |
| 68            |          |            |            |
| 69            |          |            |            |
| 70            |          |            |            |
| 71            |          |            |            |
| 72            |          |            |            |
| 73            |          |            |            |
| 74            |          |            |            |
| 75            |          |            |            |
| 76            |          |            |            |
| 77            |          |            |            |
| 78            |          |            |            |
| 79            |          |            |            |
| 80            |          |            |            |
| 81            |          |            |            |
| 82            |          |            |            |
| 83            |          |            |            |
| 84            |          |            |            |
| 85            |          |            |            |
| 86            |          |            |            |
| 87            |          |            |            |
| 88            |          |            |            |
| 89            |          |            |            |
| 90            |          |            |            |
| 91            |          |            |            |
| 92            |          |            |            |
| 93            |          |            |            |
| 94            |          |            |            |
| 95            |          |            |            |
| 96            |          |            |            |
| 97            |          |            |            |
| 98            |          |            |            |
| 99            |          |            |            |
| 100           |          |            |            |

**BUREAU OF LAND MANAGEMENT**  
**Lakeview District**  
**ATTN: Planning & Environmental Coordinator**  
**HC 10 Box 337**  
**Lakeview, OR 97630**

Lakeview Resource Area Planning Update









**UNITED STATES  
DEPARTMENT OF THE INTERIOR  
BUREAU OF LAND MANAGEMENT**

**LAVEKIEW RESOURCE AREA  
LAKEVIEW DISTRICT OFFICE**

**HC 10 Box 337  
1300 South G Street  
Lakeview, Oregon 97630-9701**

**OFFICIAL BUSINESS  
PENALTY FOR PRIVATE USE, \$300**

**FIRST CLASS MAIL  
US POSTAGE & FEES PAID  
Bureau of Land Management  
Permit No. G-76**