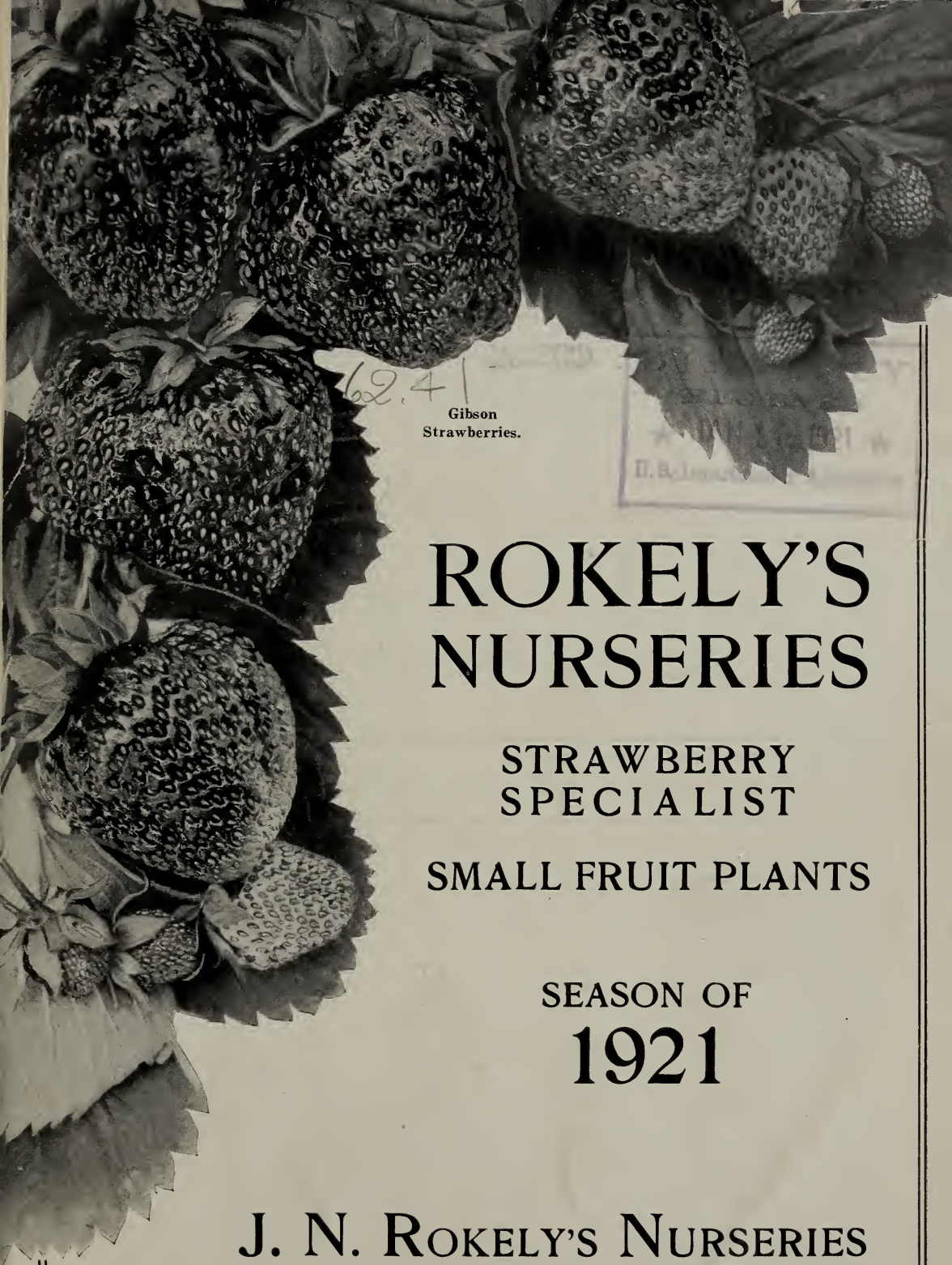


## **Historic, Archive Document**

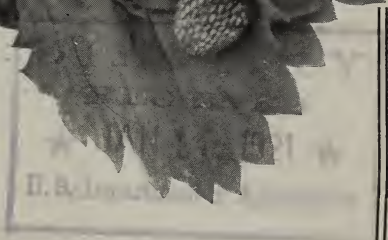
Do not assume content reflects current scientific knowledge, policies, or practices.





62.41

Gibson  
Strawberries.



# ROKELY'S NURSERIES

STRAWBERRY  
SPECIALIST

SMALL FRUIT PLANTS

SEASON OF  
**1921**

**J. N. ROKELY'S NURSERIES**  
Bridgman, Michigan

## To Our Friends and Patrons

We are again handing you our Catalog of small fruit plants, and we take this opportunity of thanking you for the past business and for the nice letters we receive from many of you each year, praising our plants and also for passing the good word along to your friends and neighbors as their letters indicate.

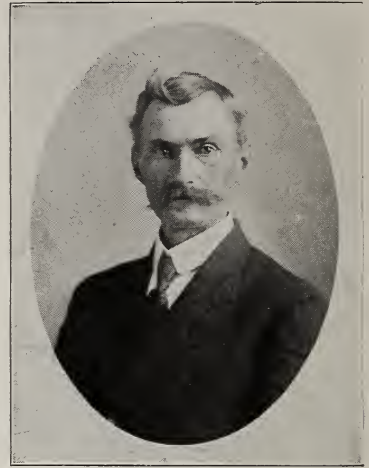
While the past season has been one of the driest seasons we have had for a number of years, we have succeeded (by continuous cultivation) to grow a good stock of well rooted plants, but be sure to place your order **early** as some varieties are always sold out before the season is over. We acknowledge receipt of your order (by card) same day order is received, so if you do not hear from us promptly write us about it. We also notify you by card the day your order is shipped.

**A WORD TO THE NEW BEGINNER.** In preparing our Catalog we only aim to list varieties that we know are the best, and you will make no mistake in ordering any variety that we have listed, they are all good varieties and they have the vitality too. Let us prove that statement. If you are in doubt as to varieties you wish to order, we want you to feel perfectly at liberty to call on us.

We will appreciate having your order at an early date and wishing you a prosperous year, I remain,

Yours very truly,

J. N. ROKELY.



## General Information

When writing, please be sure to sign your name **plainly**, also give your Postoffice, County and State.

**SUBSTITUTION**—We will not substitute one variety for another without your permission, unless order is received too late in season to permit correspondence. In this case, some variety having same season and variety will be substituted.

**TERMS**—Cash with order or part cash and the balance any time before shipment is made. We give references as to our reliability which all are at liberty to investigate. For information as to our standing and reliability, please refer to the Postmaster, or Express Agent of Bridgman, or the Farmers and Merchants Bank, Benton Harbor, Michigan; Bridgman State Bank, Bridgman, Michigan. (In writing to any of the above please enclose stamp for reply.)

**TIME TO ORDER**—Order early. The earlier the better. If anything more is needed it can be added later. If not prepared to send the full amount, send part and the order will be booked; the balance may be sent any time before shipment is made.

**METHODS OF SHIPPING**—By express; this is the safest, and, all things considered, the best way to ship plants, especially strawberry plants. Large orders of cane plants may be shipped by freight, and as a rule they arrive in good condition. Certificate of nursery inspection goes on every package of plants we send out. We have the Adams Express Co.

**SEASON OF SHIPPING**—We commence to ship the last of March or first of April, according to season.

**WE DO NOT ISSUE A FALL CATALOGUE**, but we will supply you with what plants you may want at any time after plants are matured in the fall.

**Rokely Plants are dependable and true to name. All orders have careful attention.**



## Strawberry Plants

There is no fruit growth that should be so generally planted in the home garden. Five hundred plants will give you all the fruit that you want for your table use and for canning for winter. Strawberries as a fruit are in a class by themselves. You will make no mistake in ordering any of the varieties listed herewith for either the home garden or for commercial use.

✓ **AROMA (S)**—Late. This is one of our best and most popular varieties. Berry is very large and one of the best shippers, always selling at top prices owing to its large size and fine appearance. Plant is healthy and puts out plenty of runners. The demand for Aroma plants is very heavy.

✓ **AUGUST LUTHER (S)**—Ripens early and continues to bear till practically every berry reaches a good size. Fruit is very uniform in shape and size; plants healthy and good plant maker. It succeeds best on rather light soil.

✓ **BEDERWOOD (S)**—Ripens early, only a few days later than August Luther, and continues to bear heavy pickings of berries till the late varieties are practically gone. The Bederwood is about as firm as Bubach. Plants are healthy, deep rooted and a great drouth-resister.

✓ **CHARLES I**—This is the earliest berry to ripen that we have in this section and always sells for extra high prices on the Chicago market. Plants are medium in size, vigorous and healthy and a good plant maker; fruit is large, regular in form with fair color and firmness. It is the large early berry that gets the big money; add to this the great productiveness of this variety and you have a combination that is mighty hard to beat in an early berry.

**THE ROOT GROWTH IS VERY HEAVY  
ON OUR GROUNDS.**





Field of Gibson in Fruiting Season.

**GANDY (S)**—Late. This has been one of the leading varieties with fruit growers all over the country for many years. Berry is large and firm, a good market variety, ripens a few days later than Aroma. It resembles the Aroma very much.

**DR. BURRILL**—Is an improved Senator Dunlap, and was originated by Dr. Reasoner of Illinois, who originated the famous Senator Dunlap. It is a cross of Senator Dunlap and Crescent, both being wonderful producers. This new berry is the biggest cropper of all strawberries. Berries are very large and uniform in size and shape. Most of you know what Senator Dunlap is and what loads of nice berries they are producing everywhere.

**WM. BELT (S)**—The plant is very large, a most luxuriant grower, and remarkably productive. Berry is very large, conical and uniform in shape. Color of Wm. Belt is extra fine, being brilliant glossy red. This valuable late variety should be planted on well drained soil, as it sometimes rusts on wet soil. Wm. Belt is a profitable late variety.



Wm. Belt.



Dr. Burrill.



Gandy.



✓ **HAVERLAND (P)**—Medium early, very productive, fruit large and fine, one of the most popular and well tested varieties; one of our heavy croppers; an all round profitable kind. Demand for this variety is very heavy.

✓ **SENATOR DUNLAP (S)**—This berry is one of the Warfield type, has perfect blossoms, is hardy, productive, a splendid keeper and is able to hold its own under most any rough and tumble methods of cultivation to which it is likely to be subjected. Senator Dunlap is a very hardy berry, having good-sized and even fruit of a very beautiful dark red color. It is a berry to grow for home use or market. The Senator Dunlap is now one of the greatest all round varieties under cultivation. We sell as many of these plants every year as we do of all other varieties put together.



Progressive Fall-Bearing Strawberries.

**WARFIELD (P)**—This is one of the great standard varieties that has been the leader all over the country before the Senator Dunlap was introduced. It resembles the Dunlap, but has an imperfect blossom. You will make no mistake by planting Warfield and using Senator Dunlap along with them.

**GIBSON (S)**—Gibson commences to ripen with Senator Dunlap, but owing to its great productiveness it continues till quite late. It is a strong grower, with long roots that withstand dry weather; has dark green foliage and lots of it. Berry is extra large and the vines are loaded with fruit. We advise all to try a few Gibson this spring; you will be delighted with them.

**BRANDYWINE (S)**—Late. Large size, good quality, good shape, firm and productive. Dark red, fine flavor and good market variety. We can recommend them as a good all round berry.

**POCOMOKE (S)**—One of the best varieties in existence, not only for its enormous productiveness, but on account of its beauty, adaptability to all soils, its foliage, enduring the dry hot weather, its firmness and high flavor. The plant is a strong, robust grower, with deep roots and lots of them. Perfect blossoms and is an enormous yielder of large, red berries. It ripens evenly and is one of the best shippers yet introduced. You will make no mistake in planting Pocomoke.

**SAMPLE (P)**—Season medium late. The Sample is a great favorite with us. Very productive. We have fruited it for many years. It is our choice for table and canning, yet it is hard to choose between Sample and Dunlap. Both of them are splendid berries for home use and for market. The Sample is a very heavy plant maker and the plants are large and thrifty.

## A Wonderful New Strawberry "THE BILLY SUNDAY"

The plants are very hearty—a great crown maker—tall, dark green foliage, long, heavy fruit stalks, making the berries easily gathered. The berries are very large, glossy red, slightly wedge shape, uniform in shape and size, a delicious, sweet flavor and it ought to make a good shipper. They fruit a long season, and throw out late bloom that develops large berries, making a frost resister. They begin to ripen with Haverland and end with Sample. A perfect flowering variety and a good plant maker. We have only a very few of the Billy Sunday plants this year, and can only offer twenty-five plants to each customer for \$1.00.

You should not fail to place your order early for this variety as undoubtedly we will be sold out before planting time.



Billy Sunday.

East Lansing, Mich., July 22, 1914.

Dear Sir:—

The Billy Sunday Strawberry plants were exceedingly fine with us this year, although before fruiting time it was unusually dry. The quality is very high. The plants are very productive, and we think very highly of them.

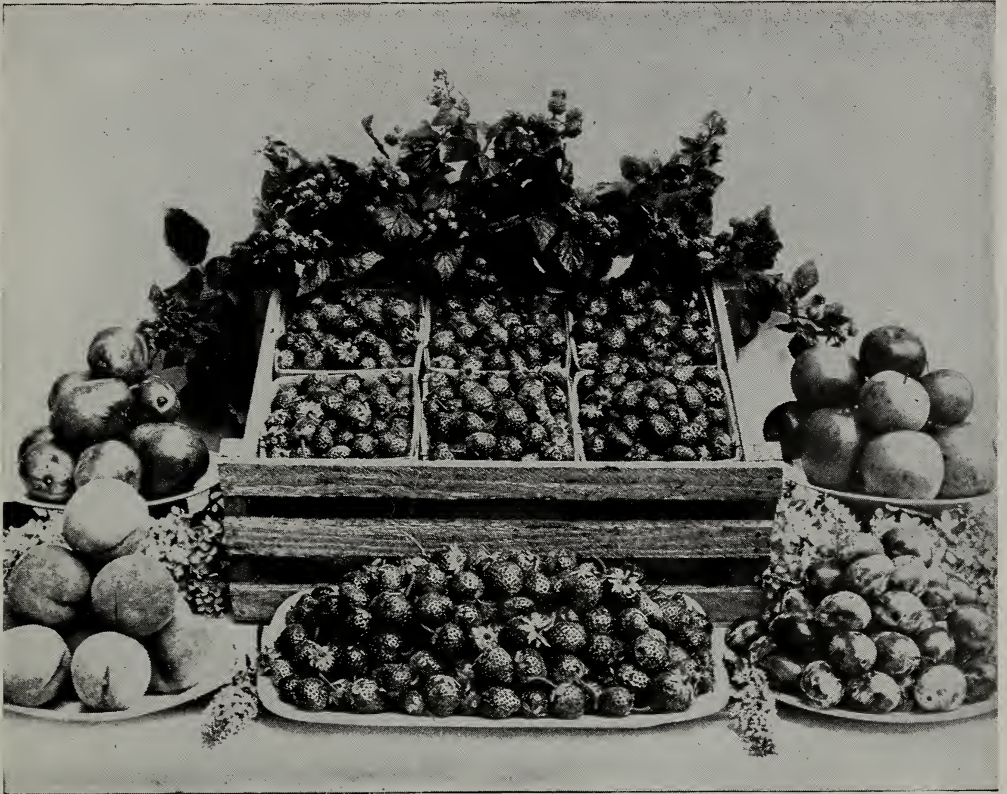
Very truly yours,

H. J. ESTACE.

**Note:—**We wish to bring to the attention of our customers the fact that the Gibson and Pocomoke are now recognized by leading growers and nurserymen as being one and the same variety. We still retain both names as some of our customers know the variety by one name and not the other. You will certainly make no mistake in ordering some of these plants.

USE THE ORDER BLANK IN THE BACK OF CATALOGUE AND BE SURE  
TO WRITE YOUR NAME AND ADDRESS PLAINLY





Superb Everbearing.

## Everbearing Strawberries

The Everbearing Strawberry is no longer an experiment but it is a decided success. They will produce a big crop of fruit the same season they are planted and will start to produce in June of the next season and bear abundantly all summer and fall.

**PROGRESSIVE**—It is no uncommon thing to find a cluster of berries on young plants of Progressive even before they are rooted; in fact, it produces so heavily that the blossoms must be carefully kept off until mid-summer, or else the plants will completely exhaust themselves before they get a chance to bed up. The quality of the fruit of this variety ranks with the best. It is medium in size, highly colored, being red to the core. The berry parts readily from the cap and if not left on too long after it is ripe, it will carry well. We have a very fine stock of these this year.

**SUPERB**—The Superb is well named and is the best producer. After planting in early Spring with blossoms kept off until midseason, or until about four weeks before you want ripe fruit you can get a crop the same season you plant; the following spring you will get a regular crop of fruit and then more fruit the following fall. The fruit of the Superb is medium to large and very attractive; seeds are prominent. In addition to being fall bearing variety, Superb is an exceptionally desirable kind for the regular spring crop and immensely productive.

We advise those purchasing Black or Purple Raspberry plants to have them shipped early in April and if not ready to plant them they may be trenched in until ready. Later in the spring they start new growth and will not stand packing and shipping nearly so well.



Columbian Raspberries.

## Raspberries

Raspberries will grow and do well on any ground that will produce good field crops. Soil must be comparatively dry or well drained. We generally set raspberries about four feet apart in the row and the rows six feet apart.

### Red Varieties

**CUTHBERT**—Leading late variety, all over the country. A very rank grower. Very productive. Fruit large and of good quality. If you want a good, all around late red raspberry, plant the Cuthbert.

**KING**—This is the best money making red raspberry today. The first to ripen and yields very large crops. Berry is bright red and very attractive, very firm in quality and will not turn dark after picked as some other varieties will. All of our big fruit growers here at Bridgman are growing more of the King than of any variety of red raspberry. Plant the King for a money crop.

### Purple Varieties

**HAYMAKER**—Of same type as Columbian, fruit a little more acid and later, prolonging the season. Enormous producer. Delicious for table use and splendid for canning and shipping. The bush is hardy and free from disease.

**COLUMBIAN (Purple Cap)**—This variety is remarkable for vigor and productiveness. It will yield at least a third more than the most productive Black Raspberry. It is also hardier than any of the Black Caps. It propagates from the tips, the same as Black Caps. Fruit is large and somewhat conical in shape, of excellent quality, having a distinct flavor of its own; the color is a dark red when ripe, bordering on purple; it is not as firm as black caps, but will stand shipping nicely to near markets and sells at same prices as Black Raspberries. Commences to ripen about with the Gregg and has a long season, the best of all for canning, preserves and jams. Plants are scarce; order early.

## The Great "St. Regis" Everbearing Raspberry

Succeeds upon all soils, whether light, sandy or heavy clay. In growth it is strong and stocky, with a great abundance of healthy, dark green foliage; it is the only variety known that gives a crop of fruit the same year planted and two crops the year after. Plants set in early spring will give a small crop of fruit in the fall following. About the middle of August it commences to set fruit on the young canes and bears continuously until frost. The berries are large, beautiful and attractive. Bright crimson, large size, rich, sugary raspberry flavor. Flesh is firm and meaty. A good shipper. Wonderfully productive, the first or main crop equal to any red variety known. The St. Regis Everbearing Raspberry is a money maker par excellence and cannot be recommended too highly. Plant it and succeed whether growing for home use or market.

## Black Varieties

**CUMBERLAND**—This raspberry is placed on the market with the full assurance that it is the most profitable market variety yet known because of its immense size, firmness and great productiveness. Cumberland is very hardy, having withstood a temperature of sixteen degrees below zero without injury. Extra productive. Fruit is jet black and of fine quality. Ripens before Gregg.

**GREGG**—Fruit very fine and covered with bloom. Gregg has been the leading market variety all over the country. A good all around late black cap. In quality they are hard to beat. They are large and productive.

**KANSAS**—This variety is a general favorite with growers all over the country. Ripens just after Soughegan. Firm, handsome and of the best quality. Bush a strong grower; stands drouth and cold. Very productive. It is about as large as Gregg. Strong, healthy canes.



Cumberland is a Black Cap That Never Disappoints.

**RASPBERRIES—Continued.**

**PLUM FARMER**—While this is not a brand new sort, having been grown in New York State for several years, it is not widely disseminated. It is a fine grower, being more free from disease of black caps than other varieties. It ripens very early and most of the fruit is produced in one week. The fruit is very large, thick meated and very firm, making a good berry to evaporate or ship to distant markets.



Eldorado Blackberries.

## Blackberries

There is a great and increasing demand for blackberries. The more intensive culture of farm lands has reduced the supply of wild ones. They are easily cultivated in long, narrow rows, which should be well cultivated and fertilized to get the best results.

**ELDORADO**—This is undoubtedly one of our finest blackberries. Its large size and delicious quality put it far in advance of other standard varieties. It is the hardiest blackberry in cultivation, it will stand the Northern climate uninjured. It is very productive, and has not failed to ripen a crop since its introduction, so we have confidence in recommending it as far superior to anything we know on the market. We are confirmed in this by endorsements of nearly all the agricultural experiment stations and the U. S. Department, Washington, D. C., which has tested the variety and reports as follows: "Sweet, rich and extra good. It is certainly far superior to the Snyder, and we have never tested anything to equal it." It has been cultivated 20 years, and, under careful tests at different experiment stations for years, has never winter-killed or failed to produce a full crop of the finest fruit. The canes are very vigorous and hardy, enduring the winters of the far Northwest without injury, and their yield is enormous. The berries are large, jet black, borne in large clusters and ripen well together; they are very sweet, melting and pleasing to the taste; have no hard core and keep for four or five days after picking with quality unimpaired.

## Dewberries

**LUCRETIA DEWBERRY**—The best of the blackberry family. Berries are far larger and better than any blackberry; of unequalled excellence; sweet and luscious throughout and of brightest black color. Its trailing habit renders it less liable to winter-kill. Propagates from the tips. Plant in rows six feet apart and plants three feet apart in the row.

## Grapes

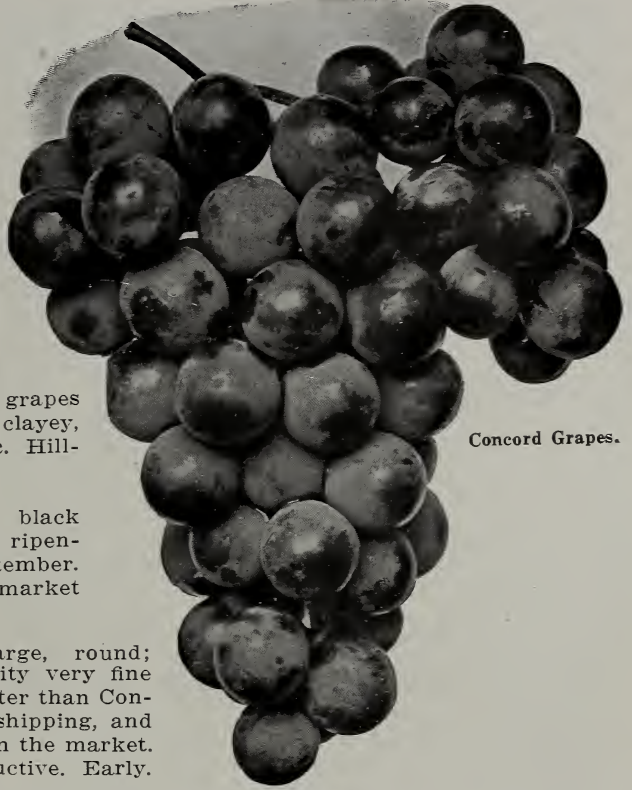
The grape is the most healthful of all fruits, and the most highly esteemed for its many uses. It can be grown by everyone who has a garden, a yard or a wall. It can be confined to a stake, bound to a trellis, trained over an arbor or extended until it covers a large tree or building, and still it yields graceful bunches of luscious fruit. Enormous profits have been realized from this fruit. Vines produce from 40 to 50 pounds of fruit the fourth year from planting. Good grapes are grown on various soils; clayey, loamy, gravelly, black, sandy, etc. Hill-sides are good for grapes.

**CONCORD**—Large, purplish black grape, very hardy and productive, ripening about the middle of September. This is one of the most popular market grapes. Midseason.

**MOORE'S EARLY**—Very large, round; black with a blue bloom; quality very fine and is classed as better and sweeter than Concord; they stand handling and shipping, and have an established reputation on the market. Vines extremely hardy and productive. Early.

**NIAGARA**—Large, slightly oval; pale yellow with a white bloom; the quality is equal to Concord and is the standard white grape of the country. Bunches are large and compact. Vines vigorous, hardy and very productive.

**WORDEN**—Large, round; black; flesh has a fine flavor unlike any other grape; delicious and melting; a dessert and market sort. It is considered far superior to Concord in every way. The vine is hardy and very productive. Early midseason.



Concord Grapes.

## Gooseberries

**DOWNING**—We are offering this variety with the full assurance that it is the best gooseberry under cultivation. Berry is yellowish green when ripe, one of the very largest varieties, and they will produce more fruit than any variety we have ever grown.

### HOW TO PREPARE THE SOIL FOR STRAWBERRIES

One important and advantageous feature of the strawberry business not always appreciated is the fact that strawberry in any ordinary soil yields large harvests of fruit. Also to fertilize, we prefer stable manure over anything else. If the soil is strong enough to produce a large crop of corn or potatoes, it will grow a fine crop of strawberries without the application of any fertilizer.

The best time to apply the manure is in winter, just when the soil tiller has ample time at his command in which to do this work. It should be spread evenly over the entire surface, so that it will mulch the ground. Not only does it enrich the ground when thus applied, but it also keeps the soil from puddling, and in the spring it will plow up loose and mellow as a garden. After the plowing is done go over the field with harrow or disc until the soil and manure are thoroughly mixed together. It should be pulverized finely to the depth of the plowing.

If your soil is sandy, or loose, black soil, it should be rolled firmly, but if it be clay or stiff black soil, roll it only enough to crush the clods. If the harrow follows directly after the breaking plow, before the clods have time to dry out and become hard the clods will crumble and it will be unnecessary to roll at all. We recommend that this course be followed if you have but one team; plow a while and then harrow thoroughly the new plowed ground.

If for any reason you cannot haul manure during the winter, then wait until spring, plow your ground as outlined above, then set the plants. After this is done you may spread the fine manure between the rows and the cultivator will mix the manure into the soil. We often have manured our plants in this way, and the results are excellent. In fact, it is an ideal way.

In some localities stable manure cannot be had, and in such cases commercial fertilizers may be used. A fertilizer best adapted to the needs of the strawberry should contain the three principal plant-food ingredients in about the following proportions: Nitrogen, 3 per cent; Potassium, 9 per cent; Phosphorus, 7 per cent.

A commercial fertilizer should be applied and thoroughly worked into the soil before the plants are set.



London Market  
Currants.

way, yields immensely, can be shipped almost any distance, and is easily gathered and packed.

The secret of success is well drained soil. Prepare it well, set  $2\frac{1}{4}$  by 4 feet covering the crown with two inches of soil. Do not let water stand on the ground, especially when manure is freshly applied. While a heavy feeder, it should have its fertilizer distributed over the year, not gorged with heavy applications, which cause a fermentation disastrous to the plant. Top dress in September and February with good manure. As soon as growth starts in the spring rake off the straw portions and work the other in. If the growth begins to look quite yellow in hot weather remove any decaying stalks and cultivate shallow in and between the rows.

**GIANT CRIMSON**—Early, just before Asparagus; immense stalks, tender, delicately flavored; productive and continues long in use; the best variety for general use. Large, thrifty roots.

## Currants

### LONDON MARKET—

Strong grower; large fruit and very productive; holds its foliage and is not liable to attack of worms and borers. Plant is extremely vigorous.

## Asparagus

Asparagus is a good crop to have in the home garden, the tender stalks are very delicious, nutritious and appetizing and are relished by nearly everyone, coming so very early in spring, when something of this kind is needed to tone up the system after a dearth of such luxuries. Asparagus should be planted both for home consumption as well as for market. 100 hills will give a fine supply all spring and summer for any small family; larger families should have more.

Asparagus is a great moneyed crop; it is grown very extensively in Southern Illinois, where it is planted by the hundreds of acres, and thousands of dollars are realized from the sale of the stalks every year, netting in many instances \$500 and more per acre.

An asparagus bed once started will last for forty to fifty years and give profitable cuttings. Asparagus is easy to culture. Plant on good soil, just so it is well drained.

## Rhubarb or Pie Plant

Coming in so early, Rhubarb finds a ready market, being relished by everyone. The city garden should have a dozen or two and every farm can add to its income from Rhubarb. It is easily produced in a commercial







# Price List for 1921

For Parcel Post shipments add 20c per 100 plants for Strawberry; 50c for Raspberry and Blackberry plants, and 75c for Grape plants, and Currants.

## STRAWBERRY PLANTS.

	100	250	500	1,000
August Luther (S) .....	\$1.00	\$2.00	\$3.50	\$6.00
Aroma (S) .....	1.00	2.00	3.50	6.00
Bederwood (S) .....	1.00	2.00	3.00	5.00
Billy Sunday .....	25 for 1.00			
Brandywine (S) .....	1.00	2.00	3.50	6.00
Charles I. (S) .....	1.00	2.00	3.50	6.00
Dr. Burrill (S) .....	1.00	2.00	3.50	6.00
Gandy (S) .....	1.00	2.00	3.50	6.00
Gibson (S) .....	1.00	2.00	3.50	6.00
Haverland (P) .....	1.00	2.00	3.50	6.00
Pocomoke (S) .....	1.00	2.00	3.50	6.00
Senator Dunlap (S) .....	1.00	2.00	3.00	5.00
Sample (P) .....	1.00	2.00	3.50	6.00
Steven's Late Champion (S) .....	1.00	2.00	3.50	6.00
Wm. Belt (S) .....	1.00	2.00	3.50	6.00
Warfield (P) .....	1.00	2.00	3.00	5.00

## EVERBEARING STRAWBERRIES

Progressive (S) .....	\$2.00	\$4.00	\$8.00	\$15.00
Superb (S) .....	2.00	4.00	8.00	15.00

## RED RASPBERRIES

Cuthbert .....	\$2.00	\$4.50	\$9.00	\$18.00
King .....	2.00	4.50	9.00	18.00
St. Regis (Everbearing) .....	3.50	8.00	15.00	30.00

## BLACK RASPBERRIES

Cumberland (Best Black Cap) .....	\$2.00	\$5.00	\$10.00	\$18.00
Kansas .....	2.00	5.00	10.00	18.00
Gregg .....	2.00	5.00	10.00	18.00
Plum Farmer .....	2.00	5.00	10.00	18.00

## PURPLE RASPBERRIES

Columbian .....	\$3.50	\$8.50	\$16.00	\$30.00
Haymaker .....	3.50	8.50	16.00	30.00

## BLACKBERRIES

Eldorado .....	\$3.50	\$8.00	\$16.00	\$30.00
Lucretia Dewberry .....	3.00	7.00	13.00	25.00

## CURRANTS

	Doz.	100
London Market .....	\$2.00	\$15.00

## GOOSEBERRIES

	Doz.
Downing .....	\$2.50

## GRAPE PLANTS

	Doz.	100
Concord .....	\$2.00	\$15.00
Moore's Early .....	2.25	
Worden .....	2.25	
Niagara (White) .....	2.50	

## ASPARAGUS

	100	250	500	1,000
Palmetto .....	\$1.00	\$2.25	\$4.25	\$8.00
Conover .....	1.00	2.25	4.25	8.00

## RHUBARB

	Doz.
Giant Crimson (Early) .....	\$1.00

Varieties of Strawberry plants marked (P) are pistillate and must have staminate varieties set every third or four row. Those marked (S) are staminate and fertilize themselves; they may be set in large patches alone with best results.

We are connected with long distance telephone and telegraph offices. Prompt attention given to all inquiries.



## Senator Dunlap

*The Most Profitable Strawberry Grown.*

There are more acres of Senator Dunlap planted in the United States than any other berry. It will grow successfully in all climates and on all soils. You will make no mistake if you plant freely of this variety

**J. N. ROKELY NURSERIES**  
Bridgman, Michigan