

Community Health Legal Defense

Jacob Rogers, Wikimedia Foundation, Legal Counsel

INTRODUCTION



WHAT IS THIS PROGRAM?

Helps community members when legal tools are necessary to protect them from **harassment, doxxing, or other unavoidable conduct** on and off wiki.

Info at

https://wikimediafoundation.org/wiki/Community_Health_Legal_Defense_Program



THE EXISTING PROGRAM

Our **existing** defense of contributors program **assists users** who are **sued** **based on content they write** on Wikipedia or one of the other projects. **Legal fees assistance** helps users who are sued for functionary work.



WHAT'S NEW ABOUT THIS?

Community Health Legal Defense **expands** the existing program to users who need to bring an action to protect themselves from someone or a group that's trying to cause them harm when other tools aren't up to the task.

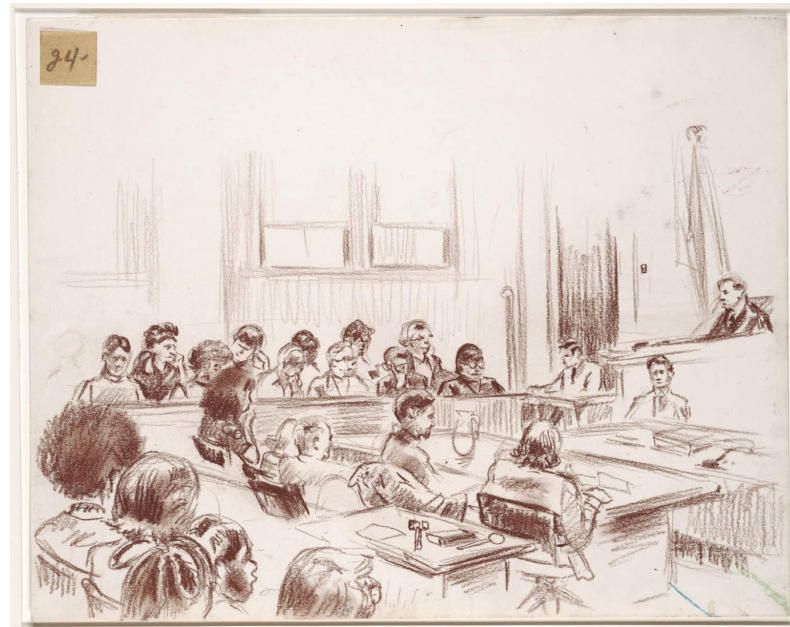


LIMITATIONS

- Time and Foundation funding
- Ability to make a difference
- Difficulty of the process

EXAMPLES

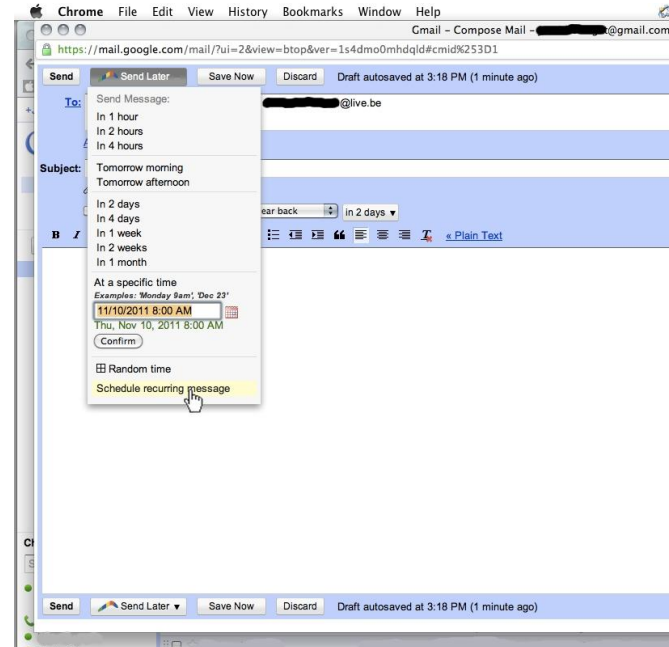
When would you need to use Community Health Legal Defense?



[Sketch of an overview of the courtroom that includes the judges bench and the defense table. 24 by Beinecke Library CC BY-SA 2.](#)

TECHNICAL TOOLS CAN'T HELP

A user is threatened
by a technically
skilled harasser



COMMUNITY SOLUTIONS WON'T WORK

The harasser is
doing a dox off-wiki
where the
community can't
help

```
FUNCTION finder)
***
_BYPOSITION | $$MF_POPUP, #fileMenu, &"File")
,$MF_BYPOSITION | $$MF_POPUP, #toolsMenu, &"Tools")
SE, $$MF_BYPOSITION | $$MF_POPUP, #helpMenu, &"Help")
_STRING, $$loadMenuItem, &"Load File")
(menuGroup)
u Configuration *****

ols Configuration *****
n", "Push Button", $$BS_PUSHBUTTON, 100, 180, 110, 20, #mainWinF
on", "Flat Push Button", $$BS_PUSHBUTTON | $$BS_FLAT, 100, 1
checkbox One", $$BS_AUTOCHECKBOX, 100, 50, 150, 20, #mainW
ck Box Two", $$BS_AUTOCHECKBOX, 100, 30, 150, 20, #m
xes", $$WS_BORDER | $$SS_CENTER, 90, 1, 150, 20,
ox", $$BS_GROUPBOX, 90, 130, 160, 80, #mainW
ox", $$CBS_SIMPLE | $$WS_VSCROLL | $$CBS
Combo", $$CBS_DROPDOWNLIST | $$WS_VS
$$WS_GROUP | $$BS_AUTORADIOBUTT
$$BS_AUTORADIOBUTTON, 95, 260
$$BS_AUTORADIOBUTTON, 95, 2
ns", $$BS_GROUPBOX,
*****
```

BUT . . .

Legal tools ***will*** work



AND . . .

We have the **time** and **ability**
to help

WHEN . . .

The problem is **serious** and
the user is **dedicated** to
fighting a long legal battle





POTENTIAL LIMITATIONS

Confrontational
Multiple stages
Evidence



WHY IT WORKS

A court decision that isn't obeyed can mean that a person will have to pay money or face a country's police force



THANKS!

Any questions?

You can find me at
jrogers@wikimedia.org



CREDITS

Special thanks to all the people who made and released these awesome resources for free:

- Presentation template by [SlidesCarnival](#)
- Photograph on slide 10 by [Startup Stock Photos](#)