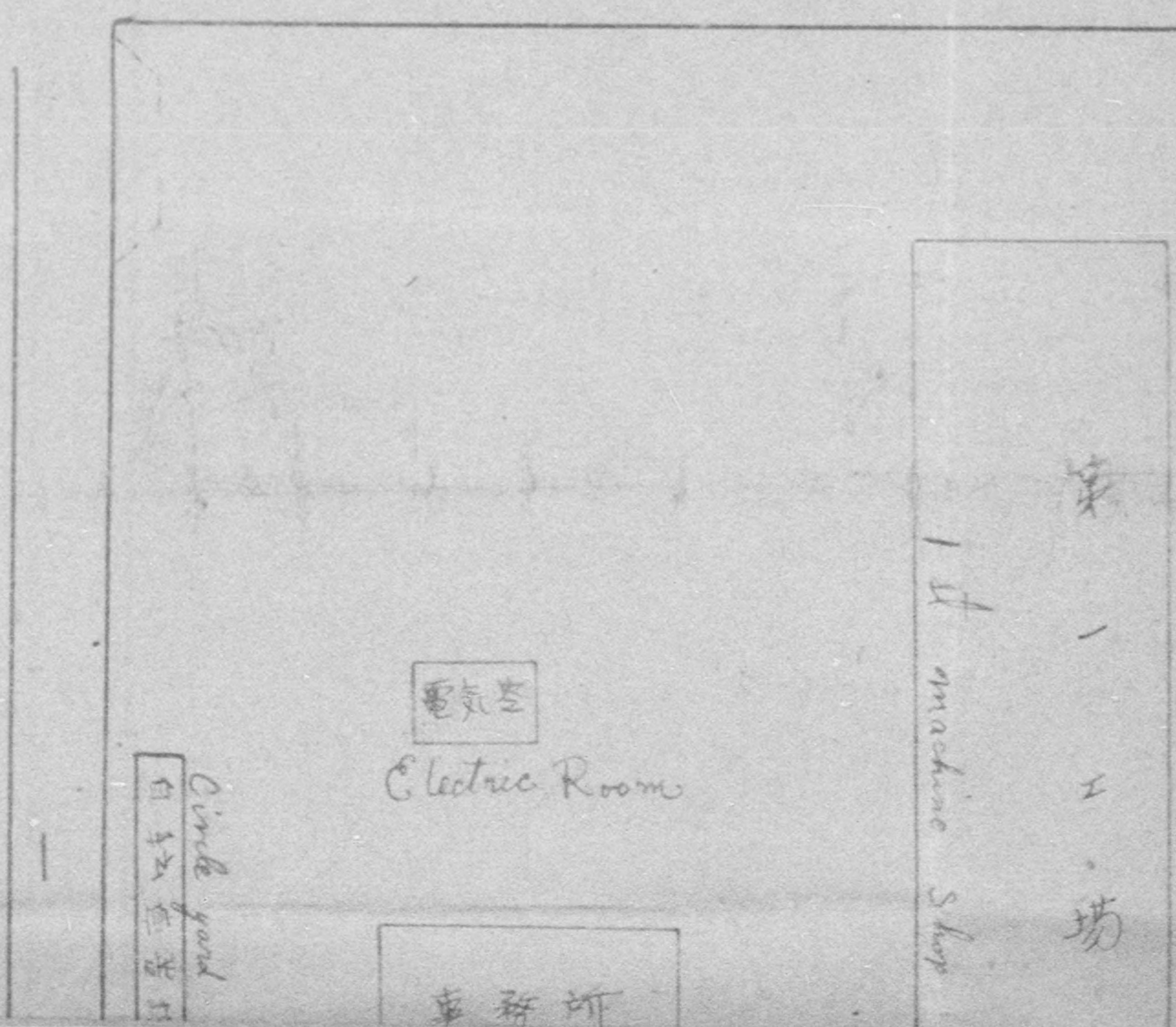


Miscellaneous	<u>15 Basis</u>
Total	<u>123 Basis</u>

This figure is equivalent of 63 % of the total number of machineries of the factory.

大東村工株式会社

The view of build



村工株式会社建築物配圖

縮尺 $\frac{1}{600}$

view of building Arrangements

Scale

倉庫
Store House

木型場

1st machine Shop
第一工場

W.C.
水洗場

2nd machine Shop
第二工場

W.C.
水洗場

3rd machine Shop
第三工場

W.C.
水洗場

Store House
木型場
第四工場
Casting

1
00

木
型
場

Wood
Working
Shop

S
Tore
House

架

山

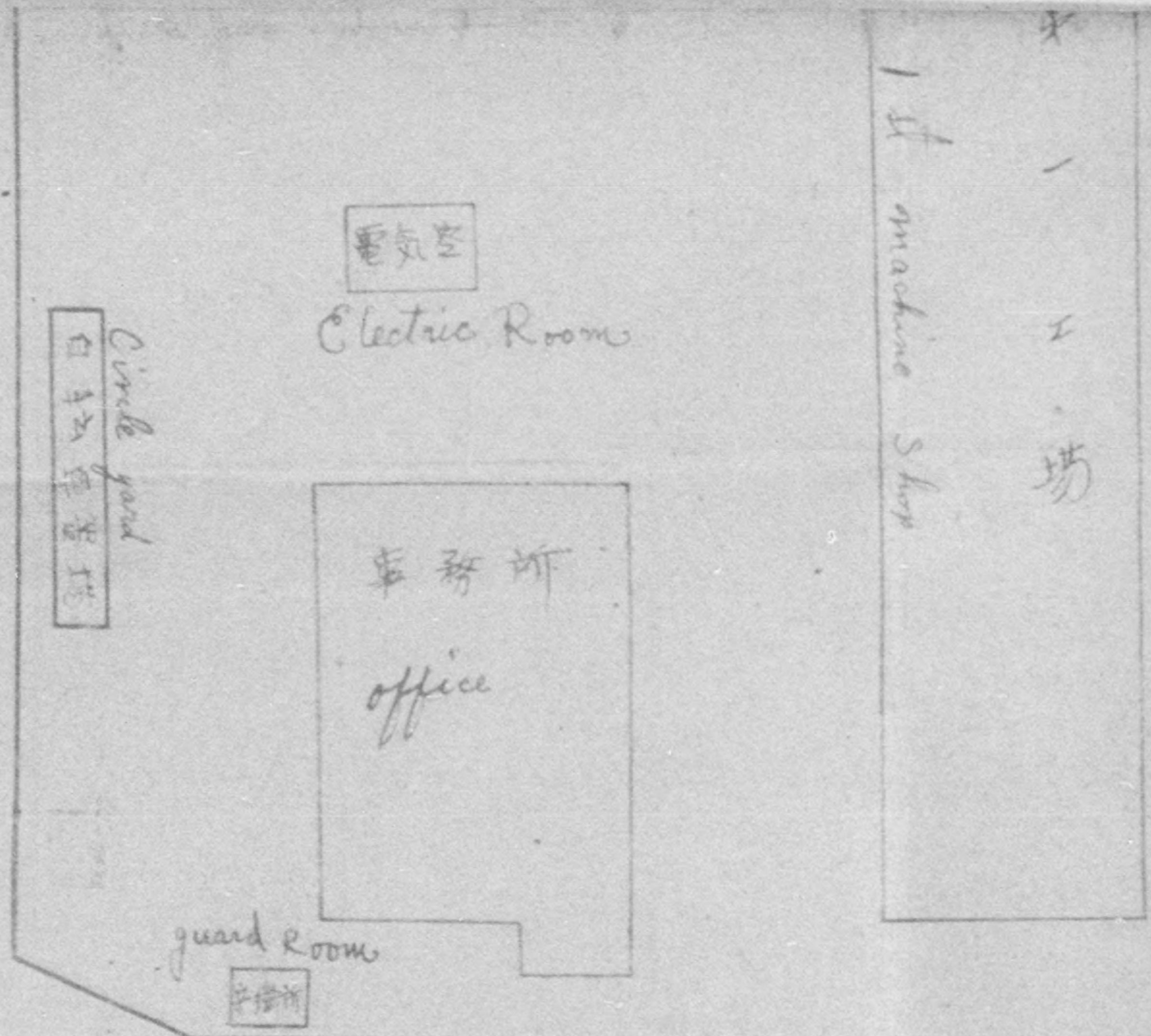
2

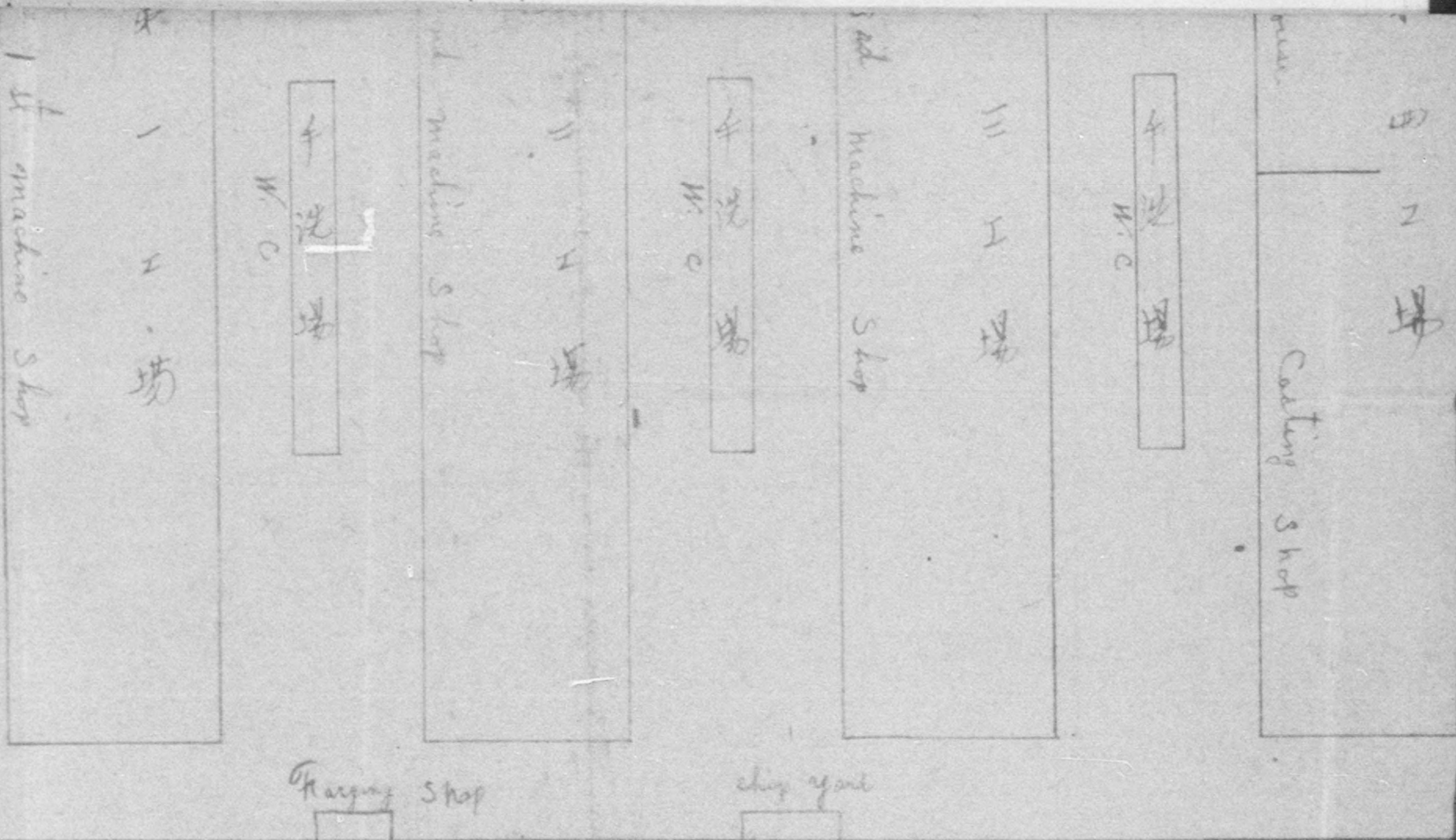
場

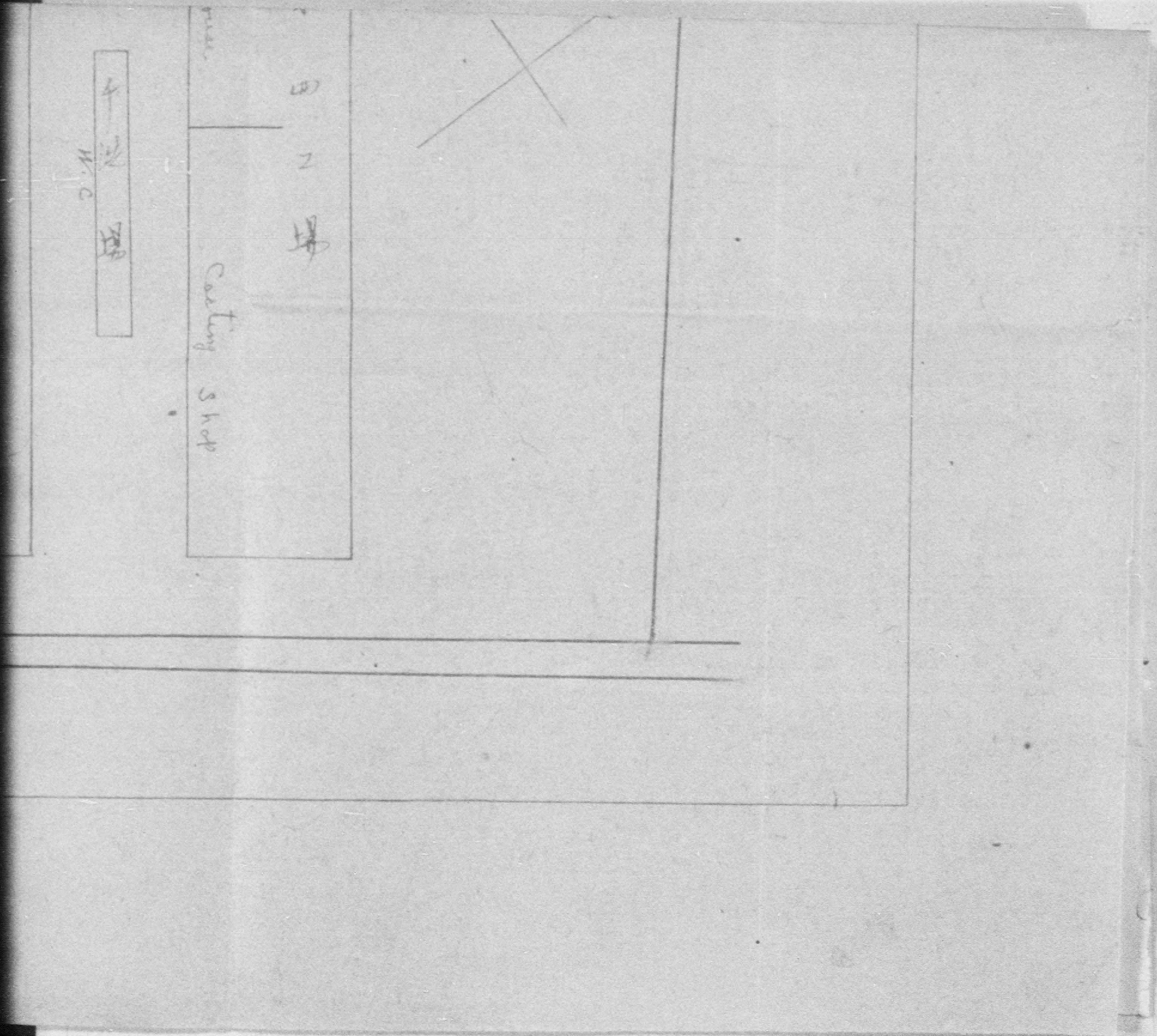
Casting

4
N.C.
場









Description of machineries equipment.

Location	Description	Type & dimension	Purpose.	Quant.	Maker.
#1 Factory	Boring machine	Horizontal 70 mm	Hotbulb		
#3 Factory	"	" 90 "	engine	1	Unknown.
"	"	" 90 "	"	1	Yamashita
"	"	" 60 "	"	1	Funabashi
"	"	" 75 "	"	1	Yamashita
				1	Unknown
			Total	5 basis	
#1 Factory	Drilling machine	Bench 10 inch	Not using	3	Minorikawa
#2 Factory	"	" 10 "	Hotbulb		
#3 Factory	"	" 10 "	engine	3	"
Pattern	"	" 10 "	"	2	"
Factory	"	" 10 "	Pattern		
#1 Factory	"	Branch 12 "	production	1	"
"	"	" 20 "	Not using	1	Yamashita
"	"	" 20 "	"	1	"
"	"	" 22 "	Automobile		
			parts	1	"
			Hotbulb		
			engine	3	Sugimoto
#2 Factory	"	" 25 "	"	1	Bufallo
#3 Factory	"	" 22 "	"	3	Sugimoto
#1 Factory	"	Upright 24 "	"	2	Tokio Kosaku
"	"	" 15 "	"		Kikai.
#2 Factory	"	" 24 "	"	2	Seikenki
			"	2	Tokio Kosaku
#3 Factory	"	" 15 "	"		Kikai
#2 Factory	"	" 15 "	"	1	Seikenki
"	"	" 15 "	"	1	Herbert
#3 Factory	"	Radial 3 F.	Not using	2	Hayashikaku
"	"	" 5 "	Hotbulb		
			engine	1	Hibi
			"	1	Rokuroku
			Total	36 basis	
#1 Factory	Gear Hobbers	Single			
#2 Factory	"	spindle 18 inch	Not using	1	Unknown
"	"	" 24 "	Hotbulb		
"	"	" 24 "	engine	3	Igawa
"	Gear finishing	Tooth chamfering	"	1	Yamashita
"	"	"	Not using	1	"
			Total	6 basis	

#1 Factory	Grinding machine	external cylindrical	24"	Not using	1	Unknown.
#2 Factory	"	"	2m	Hotbulb engine	1	Kaijinkikai
"	"	"	1m	Automobile parts	1	Shinohara
"	"	"	40"	"	1	Toji
"	"	Surface	18"	Hotbulb engine	1	Asahina
"	"	"	12"	Automobile parts	1	Kokusanseiki
"	"	Tool Internal cylindrical	10"	cutter polish	1	Unknown
#3 Factory	"	"	10"	Hotbulb engine	1	Seimitsukikai
				Not using	2	Naxos
				Total	10	basis
#1 Factory	Lathe	Engine	3.5f	not using	1	Yamashita
#2 Factory	"	"	"	Automobile parts	1	"
#1 Factory	"	"	4f	Not using	4	Suyama
#2 Factory	"	"	4f	Automobile parts	1	"
"	"	"	"	"	1	Kato
#1 Factory	"	"	4.5f	Not using	4	Showa
"	"	"	"	"	1	Yamashita
#2 Factory	"	"	5f	Hotbulb engine	6	Yoshikawa
"	"	"	"	Automobile parts	2	Unknown
"	"	"	"	Hotbulb engine	3	Yamashita
#1 Factory	"	"	"	"	5	Showa
#2 Factory	"	"	6f	Not using	1	Yamashita
"	"	"	"	Hotbulb engine	2	Saga
"	"	"	"	"	10	Yamashita
#3 Factory	"	"	"	"	4	"
"	"	"	"	Automobile parts	1	Unknown.
"	"	"	"	Hotbulb engine	3	Yamashita
#2 Factory	"	"	8f	"	1	Unknown
"	"	"	"	"	1	Yamashita
#3 Factory	"	"	"	"	1	"
#1 Factory	"	"	"	Under repair	1	Tokiokikai

#2 Factory	Lathe	Engine	10f	Hotbulb engine	1	Dean Smith
"	"	"	"	"	2	Lodge & Shipley
"	"	"	12f	"	1	Unknown
"	"	"	16f	"	1	Shiosawa
Pattern Factory	"	Pattern	6f	Pattern production	1	Yanagi
					Total	60 basis
#1 Factory	Milling machine	Horizontal		Not using Hotbulb engine	10	Yamashita
"	"	"		Automobile parts	7	"
"	"	"		Not using	2	Nakasato
"	"	Universal		"	1	Nakasato
"	"	"		Hotbulb engine	4	Yamashita
"	"	"		"	1	"
#2 Factory	"	Horizontal		Not using Hotbulb engine	1	Unknown
"	"	Universal		"	7	Yamashita
"	"	Vertical		"	1	"
"	"	Universal		Not using	1	Unknown
"	"	Vertical		"	1	"
					Hotbulb engine	1 Enshu
					Total	37 basis
#3 Factory	Planer	Double housing	12f	Hotbulb engine	1	Mitsuboshi
"	"	"	"	"	1	Matsushita
"	"	"	"	Not using	1	Unknown
"	"	"	8f	Hotbulb engine	1	"
"	"	"	"	Not using	1	"
"	"	"	6f	Hotbulb engine	2	"
"	"	"	"	"	1	Kurokawa
					Total	8 basis
#2 Factory	Shaper	Double housing	24"	Hotbulb engine	3	Yamashita
"	"	"	"	Not using	1	"
"	"	"	20"	"	1	Kusunoki
#3 Factory	"	"	24"	Hotbulb engine	3	Chiba
"	"	"	"	"	1	Yamashita

#2 Factory	Slotter	8" Hotbulb		
"	"	engine	1	Unknown
		6" "	1	Hayashikaku
		Total	<u>11</u>	basis
#3 Factory	Hack saw	6" Not using	1	Unknown
Store	"	Hotbulb		
		engine	1	Unknown
		Total	<u>2</u>	basis
	Miscellaneous	Not using	4	
	polishing etc	Hotbulb		
		engine	<u>15</u>	
		Total	<u>19</u>	basis

Number of machineries to be used for Hotbulb engines

123 Basis

A HISTORY OF DAITO KIKO KABUSHIKI KAISHA

Daito Kiko Kabushiki Kaisha are established succeeding an enterprise of the former Yamashita Tekkojo carried on personally by Mr. Iwajiro Yamashita who is present President of the Company.

The establishment of Yamashita Tekkojo was in September 1931 and were producing machines in connection with the fibre industry until 1938, while in spite of his intention he was compelled to covert the productions into machine tools since 1939 due to the progress of Chinese affair.

On February 1944, investing all the equipments organized in limited company and renamed as Daito Kiko Kabushiki Kaisha.

On September 1944 enlarged the production of machine tools, receiving as order from Nagoya Military Arsenal accomodated with 20 basis of their machine tools, in addition December of the same year, by order of the Government started to produce aeroplane parts granting the use of 49 machine tools from Nakajima Hikoki K.K., Arai factory together with a part of own equipment. While before such productions are showed progress the war was over and accordingly the borrowed machineries were returned to Nakajima Hikoki K. K. and Arsenal respectively.

After the war we, right away undertake the conversion of productions and started under the conversion permission granted by the authority the production of Hotbulb engines for fishing boat, considering the enbarrasment of fishery of this district and to remedy the food condition of the country.

Our excellent technique with a complete equipment of the factory enabled us the production of superior engines and they are highly

reputed among the fishery of this district and are enjoying with quantity of orders for them.

We are, therefore paying unceasing study and efforts in production of such engines and sincerely ~~was~~ hope to be able to succeed the production of the same.

A. Name of Company: Daito Kiko Kabushiki Kaisha.

B. Name of Factory: -do-

C. Location of Company & Factory:

a. Location of Company: No.4880, Komatsu, Onoguchi-mura,
Hamana-gun, Shizuoka-ken.

b. Location of Factory: -do-

D. Date of establishment and first operation:

a. Date of establishment: February 1st, 1944.

b. Date of first operation: February 1st, 1944.

E. History of Factory:

a. Daito Kiko Kabushiki Kaisha are established succeeding an enterprise of the former Yamashita Tekkojo carried on personally by Mr. Iwajiro Yamashita who is present President of the Company.

The establishment of Yamashita Tekkojo was in September 1931 and was producing machines in connection with the fibre industry until 1938, while in spite of his intention he was compelled to convert the productions into machine tools since 1939 due to the progress of Chinese affair.

b. On February 1944, investing all the equipments organized in limited company and renamed as Daito Kiko Kabushiki Kaisha. On September 1944 enlarged the production of machine tools, receiving an order from Nagoya Military Arsenal accomodated with 20 basis of their machine tools, in addition December of the same year, by order of the Government started to produce aeraplane parts granting the use of 49 machine tools from Nakajima Hikoki K.K., Arai factory together with a part of

own equipment. While before such productions are showed progress the war was over and accordingly the borrowed machineries were returned to Nakajima Hikoki K. K. and Arsenal respectively.

- c. After the war converted the productions into Hotbulb engines for fishing boat and are operating actively with a capacity since August of 20 basis of Standard 15, 20 and 30 HP per month and are paying utmost efforts to the development of the fishery in Shizuoka Prefecture and also contributing to the remedy of the present food condition of the country.

An excellent technique with a complete equipment of the factory enabled this factory the production of superior engines and they are highly reputed among the fishery of Shizuoka prefecture and are enjoying with ~~with~~ quantity of orders for them.

This company are, therefore paying unceasing study and efforts in production of such engines and sincerely hope to be able to succeed the production of the same.

F. Production during a period from year 1934 to 1937:
(This period belongs to Yamashita Tekkojo)

Year.	Article.	Quant.	Value.
1934	Calender	15	3600
	Dicker	12	800
	Mercerize machine	20	550
	Centrifugal pump	84	40
	Reeling machine repair	8	2000
	Printing machine repair	5	1500
	Drying machine roller	10	2500
			25,000
			126,460
1935	Dicker	48	800
	Dehydrating machine	25	250
	Drying machine	20	2500
	Reeling machine repair	8	2000
	Centrifugal pump	120	40
			4,800

Year	Article	Quant.	@	Value.
1935	Printing machine repair	12	2000	24,000 <u>139,450</u>
1936	Dicker	45	800	36,000
	Dehydrating machine	60	250	15,000
	Drying machine	20	2500	50,000
	Laundry machine	42	850	35,700
	Centrifugal pump	120	55	6,600
	Reeling machine repair	10	2000	20,000 <u>163,300</u>
1937	Dicker	55	1200	66,000
	Mercerize machine	40	1200	48,000
	Dehydrating machine	60	350	21,000
	Laundry machine	48	850	40,800
	Drying machine for reeling	8	4000	32,000
	Mercerize machine (mangle)	5	8000	40,000
	Reeling machine repair	8	2000	16,000 <u>263,800</u>

Number of machineries equipment as of end of 1937.

Lathe	16 basis
Milling machine	2 "
Drilling machine	10 "
Shaper & Slotter	3 "
Planer	2 "
Boring machine	2 "
Gear cutting and generating machine	1 "
Grinding machine	1 "
Hack saw	1 "
Miscellaneous	<u>3 "</u>
Total	41 basis

G. Productions during a period from year 1938 to 1941.

REMARKS: This period belongs to Yamashita Tekkojo.

Year	Article	Quant.	@	Value.
1938	Dicker	60	1200	72,000 Yen
	Dehydrating machine	80	350	28,000
	Laundry machine	60	850	51,000

Year	Article	Quant.	⑥	Value.
1938	Centrifugal pump	145	70	10,150 Yen
	Lathe (shop contract)	150	2300	<u>345,000</u>
				506,150
1939	Turbine pump for mining	120	1500	180,000
	Lathe	240	2300	552,000
	Drilling machine	140	600	<u>84,000</u>
				816,000
1940	Turbine pump for mining	130	1500	195,000
	High speed cutting machine	130	1600	208,000
	Lathe	200	2300	460,000
	Shaper	60	5500	<u>330,000</u>
				1,193,000
1941	Milling machine	80	8284	662,720
	High speed cutting machine	360	1600	576,000
	Attachment of milling machine	50	2470	<u>123,500</u>
				1,362,220

Number of machineries equipment increased during 1938-1941.

Lathe	25 basis
Milling machine	15 "
Drilling machine	12 "
Planer	4 "
Shaper & Slotter	6 "
Boring machine	3 "
Gear cutting and generating machine	4 "
Grinding machine	2 "
Hack saw	1 "
Miscellaneous	<u>12 "</u>

Total 84 basis

Number of machineries equipment as of end of 1941: 125 Basis.

H. Productions during a period from year 1942 to 1945.

Year	Article	Quant.	⑥	Value.
1942	Milling machine	150	8284	1,242,600 Yen
	Attachment on above	140	2470	<u>345,800</u>
				1,588,400

Year.	Article.	Quant.	Value.
1943	Milling machine	192	8284 1,590,528 Ye.
	Attachment on above	210	2470 518,700
			<u>2,109,228</u>
1944	On Feb. renamed as Daito Kiko Kabushiki Kaisha.		
	Milling machine	186	8284 1,540,824
	Attachment on above	120	2470 296,400
			<u>1,837,224</u>
1945	Milling machine	30	8284 248,520
	Rocker arm	80000	11.40 1,112,000
			<u>1,360,520</u>

I. Number of machineries provided for during 1942-1945.
(quantities increased during wartime)

Lathe	18 basis
Milling machine	19 "
Grinding machine	5 "
Drilling machine	12 "
Gear cutting and generating machine	1 "
Shaper & Slotter	2 "
Planer	2 "
Miscellaneous	4 "
Total	<u>63 basis</u>

Number of machineries increased after the war: 6 Basis.

Number of machineries as of end of October 1946: 194 Basis.

J. Productions after the war:

a. Productions (monthly) since conversion into civilian industry.
Reconversion permit No.43 dated 1st Jan. 1946 granted by
Shizuoka Prefectural Government.

Month.	Article.	Quant.
Feb. 1946	Transmission case (automobile parts)	117 pcs
Mar. 1946	Transmission case (")	563 "
	Steering arm (")	80 "

Month	Article.	Quant.
Apl. 1946	Transmission case (automobile parts)	779 pcs
	Transmission case cover (")	400 "
	Steering arm (")	235 "
May 1946	Hotbulb engines for fishing boat	4 basis
June 1946	Hotbulb engines for fishing boat	9 "
	Steering arm (automobile parts)	150 pcs
	Cooling water pump (")	46 sets
July 1946	Hotbulb engines for fishing boat	8 basis
	Hotbulb engines parts	60 pcs
	Cooling water pump (automobile parts)	100 sets

b. Objection for future productions:

Article	1946 Quant.	1947 Quant.
Hotbulb engines for fishing boat	40 basis	180 basis

K. Equipments (only usable)

a. Machine tools	Quantities at present.	
	Domestic made.	Foreign made.
Lathe	64 basis	8 basis
Drilling machine	33 "	1 "
Boring machine	5 "	0
Milling machine	36 "	0
Grinding machine	8 "	2 "
Gear cutting and gear finishing machine	4 "	0
Shaper & Slotter	10 "	0
Planer	7 "	0
Hack saw	1 "	0
Miscellaneous	19 "	0

Other producing equipment:

Article.	Quant.	Capacity.
Transformer	7	310 KVA
Motor	5	25 HP
Compressor	1	5 HP
Crane	3	Handling
Casting shop:		
Electric furnace	0	
Other cupola	1	1500 kg/a day
Heat treatment shop:		
Electric furnace	0	
Other furnace	1	

L. Percentage of this factory's monthly principal production against National and Prefecture.

Article.	National production.	Prefecture production.	This factory' production.	Percentage.
Hotbulb engine for fishing boat.	170 basis	30 basis	20 basis	12 % of National 67 % of Prefecture

M. The reason of necessity of the plant to be remain:

It is well known that the fishery of Shizuoka Prefecture are very active since before the war and the amount of catch are also one in a thousand in the country, while more than half of the fishing boats were destroyed during the war and in spite of urgent revival are required, the production in Shizuoka prefecture are not showing well advance with a monthly production of hardly 30 basis of small hotbulb engines of under standard 50 HP.

For your information this factory are at present producing easily 20 basis a month and their excellent technique are no comparison with other factories and are responding to the demand of the

fishery in Shizuoka Prefecture.

Further more this factory has already constructed a Refrigeration storage and a repair shop for engines for fishing boat at Maisaka-cho, Hamana-gun as their sister factory and a permission for the purchase of necessary machineries for the factory has been granted by the Shizuoka Military Government Team and with a close combination of both factories, this company are responding to the demand of the fishery of Enshu district in Shizuoka Prefecture in the equipping of new fishing boats with their engines and all of the repair works. It is certain that this factory are contributing to the urgent revival of the fishery in Shizuoka Prefecture and also to the remedy of the present food condition.

Under the circumstances we would be very much obliged if you would give your kind consideration to this and release from the reparative items ~~the~~ of the following machineries in order to enable this factory to continue production of above mentioned articles.

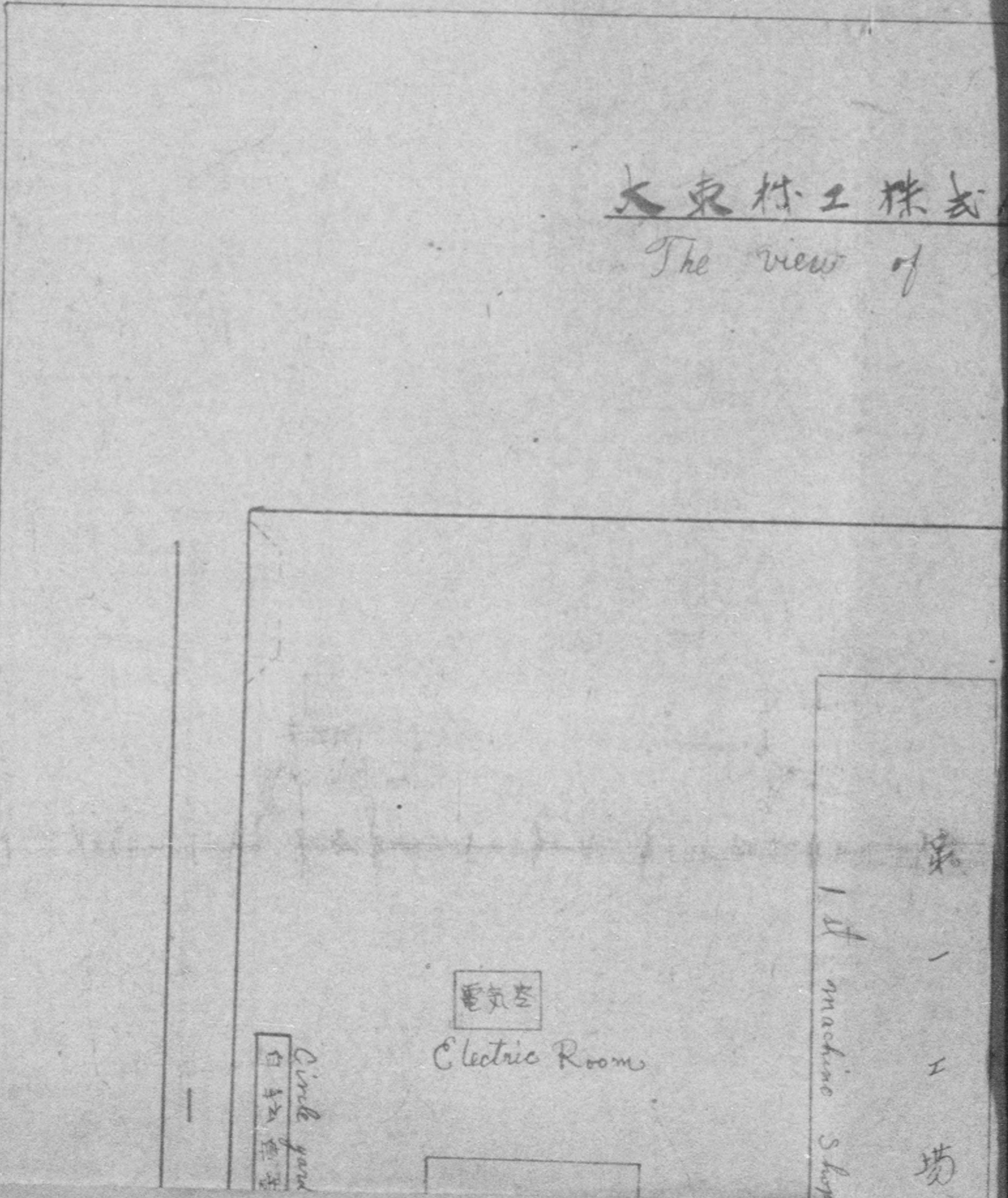
Lathes	41 Basis
Drilling machines	22 "
Boring machines	5 "
Milling machines	17 "
Grinding machines	3 "
Gear cutting and gear finishing machine	4 "
Shapers	7 "
Slotters	2 "
Planers	6 "
Hack saw	1 "

Miscellaneous	<u>15 Basis</u>
Total	<u>123 Basis</u>

This figure is equivalent of 63% of the total number of machineries of the factory.

大東村工場

The view of



日本株式会社建築物配置図

縮尺 $\frac{1}{600}$

view of building Arrangements

Scale

倉庫
Store House

大型場

1st machine Shop
工場

車洗場
W.C.

2nd machine Shop
工場

車洗場
W.C.

3rd Machine Shop
工場

車洗場
W.C.

Store House
Cost

1
600

庫
House

木
型
場

Wood
Working
Shop

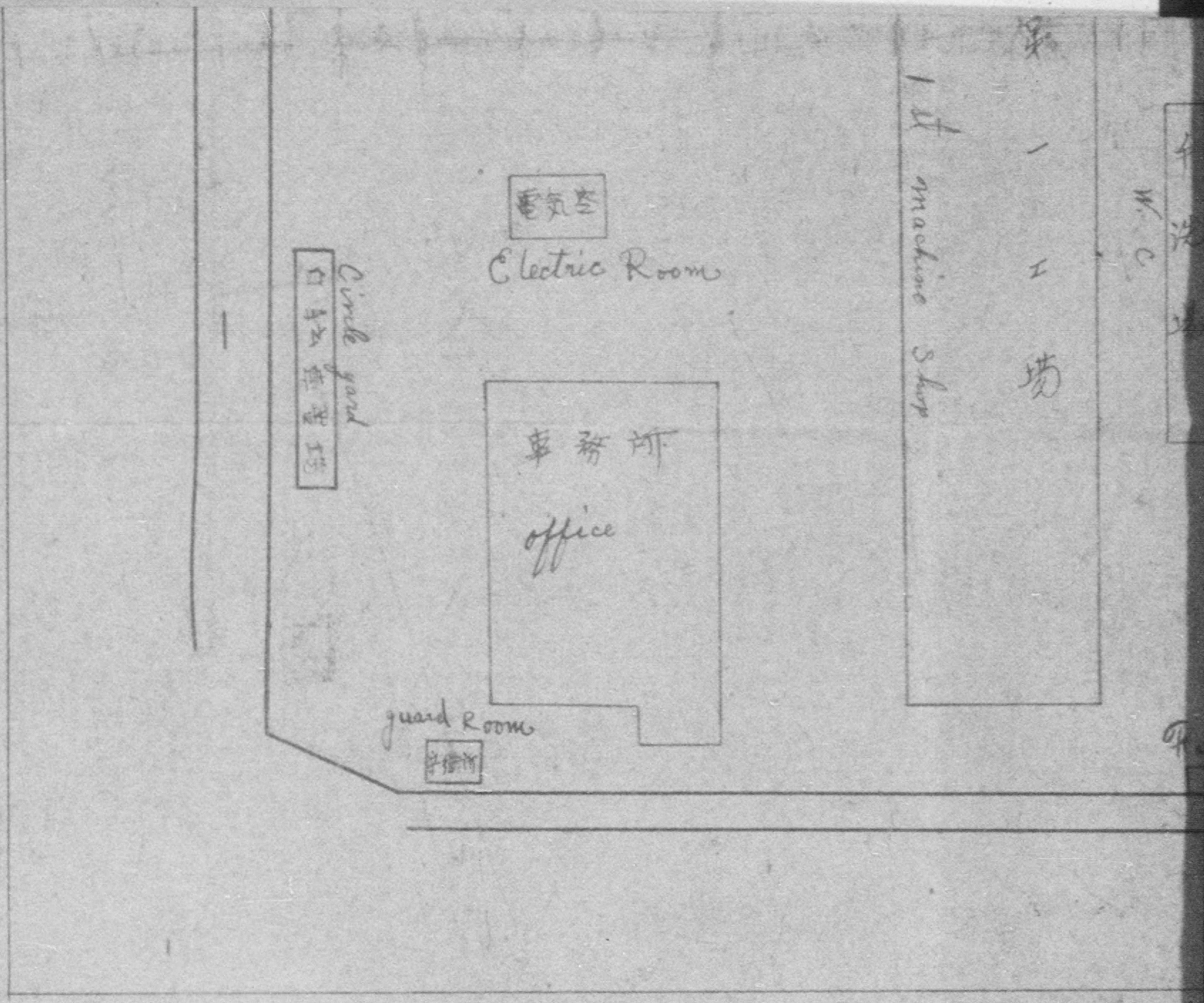
三
工
場

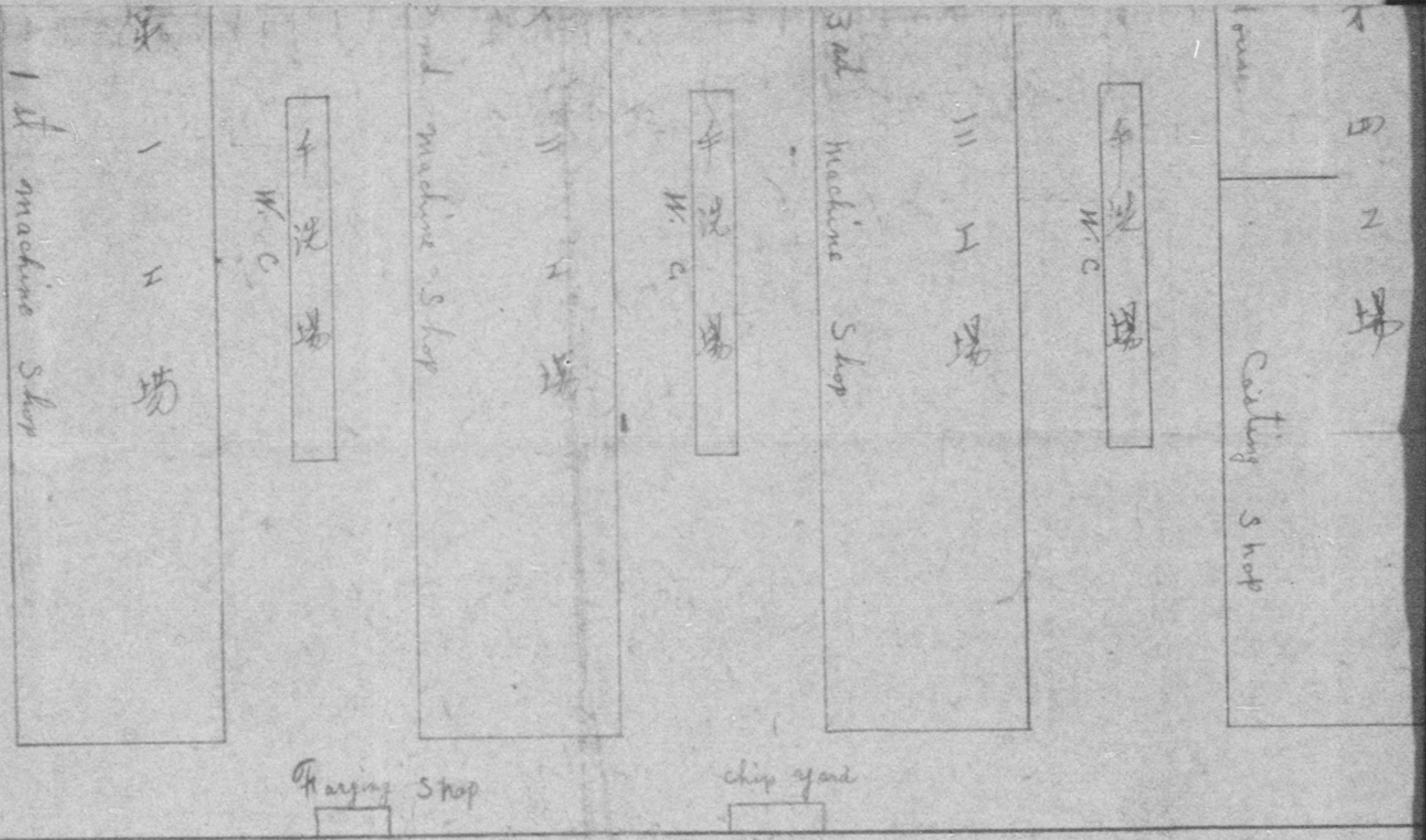
牛
場

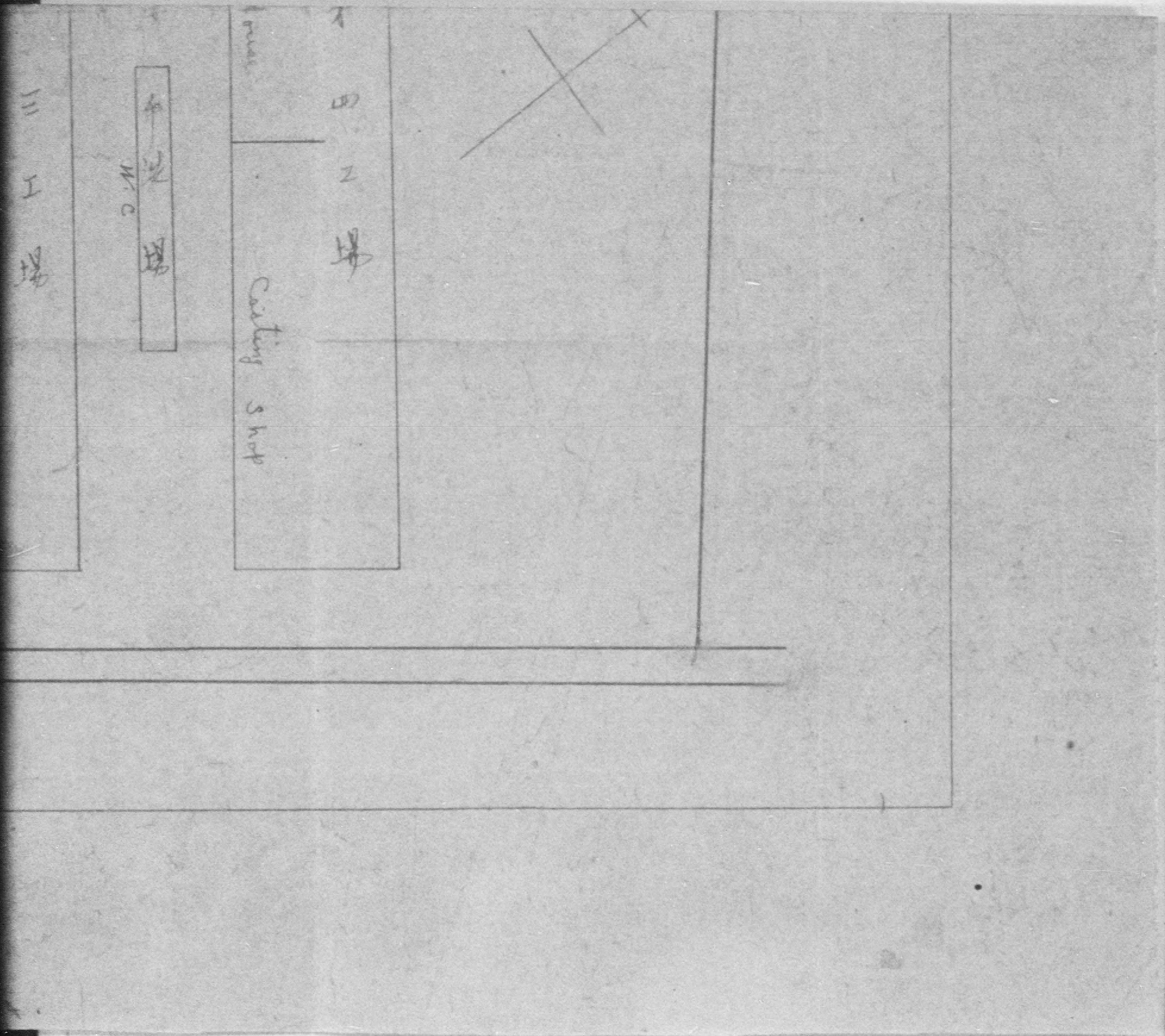
Store House
Calt

第
四
工
場









5

Description of machineries equipment.

Location	Description	Type & dimension	Purpose.	Quant.	Maker.
#1 Factory	Boring machine	Horizontal 70 mm	Hotbulb engine	1	Unknown.
#3 Factory	"	" 90 "	"	1	Yamashita
"	"	" 90 "	"	1	Funabashi
"	"	" 60 "	"	1	Yamashita
"	"	" 75 "	"	1	Unknown
				Total	5 basis
#1 Factory	Drilling machine	Bench 10 inch	Not using	8	Minorikawa
#2 Factory	"	" 10 "	Hotbulb engine	3	"
#3 Factory	"	" 10 "	"	2	"
Pattern Factory	"	" 10 "	Pattern production	1	"
#1 Factory	"	Branch 12 "	Not using	1	Yamashita
"	"	" 20 "	"	1	"
"	"	" 20 "	Automobile parts	1	"
"	"	" 22 "	Hotbulb engine	3	Sugimoto
#2 Factory	"	" 25 "	"	1	Bufallo
#3 Factory	"	" 22 "	"	3	Sugimoto
#1 Factory	"	Upright 24 "	"	2	Tokio Kosaku Kikai.
"	"	" 15 "	"	2	Seikenki
#2 Factory	"	" 24 "	"	2	Tokio Kosaku Kikai
#3 Factory	"	" 15 "	"	1	Seikenki
#2 Factory	"	" 15 "	"	1	Herbert
"	"	Radial 3 F.	Not using	2	Hayashikaku
#3 Factory	"	" 5 "	Hotbulb engine	1	Hibi
"	"	" 5 "	"	1	Rokuroku
				Total	36 basis
#1 Factory	Gear Hobbers	Single spindle 18 inch	Not using	1	Unknown
#2 Factory	"	" 24 "	Hotbulb engine	3	Igawa
"	Gear finishing	Tooth chamfering	"	1	Yamashita
"	"	"	Not using	1	"
				Total	6 basis

#1 Factory	Grinding machine	External cylindrical	24"	Not using	1	Unknown.
#2 Factory	"	"	2m	Hotbulb engine	1	Kaijinkikai
"	"	"	1m	Automobile parts	1	Shinohara
"	"	"	40"	"	1	Toji
"	"	Surface	18"	Hotbulb engine	1	Asahina
"	"	"	12"	Automobile parts	1	Kokusanseik
"	"	Tool Internal cylindrical	10 "	cutter ^{polish grinding}	1	Unknown
#3 Factory	"	"	10 "	Hotbulb engine	1	Seimitsukika
				Not using	2	Naxos
				Total	10	basis
#1 Factory	Lathe	Engine	3.5f	not using	1	Yamashita
#2 Factory	"	"	"	Automobile parts	1	"
#1 Factory	"	"	4f	Not using	4	Suyama
#2 Factory	"	"	4f	Automobile parts	1	"
"	"	"	"	"	1	Kato
#1 Factory	"	"	4.5f	Not using	4	Showa
"	"	"	"	"	1	Yamashita
#2 Factory	"	"	5f	Hotbulb engine	6	Yoshikawa
"	"	"	"	Automobile parts	2	Unknown
"	"	"	"	Hotbulb engine	3	Yamashita
#1 Factory	"	"	"	"	5	Showa
#2 Factory	"	"	6f	Not using	1	Yamashita
"	"	"	"	Hotbulb engine	2	Saga
"	"	"	"	"	10	Yamashita
#3 Factory	"	"	"	"	4	"
"	"	"	"	Automobile parts	1	Unknown.
"	"	"	"	Hotbulb engine	3	Yamashita
#2 Factory	"	"	8f	"	1	Unknown
"	"	"	"	"	1	Yamashita
#3 Factory	"	"	"	"	1	" S
#1 Factory	"	"	"	Under repair	1	Tokiokikai

#2 Factory	Lathe	Engine	10f	Hotbulb engine	1	Dean Smith
"	"	"	"	"	2	Lodge & Shipley
"	"	"	12f	"	1	Unknown
"	"	"	16f	"	1	Shiosawa
Pattern Factory	"	Pattern	6f	Pattern production Total	1	Yanagi
					60	basis
#1 Factory	Milling machine	Horizontal		Not using Hotbulb engine	10	Yamashita
"	"	"		Automobile parts	7	"
"	"	"		Not using	2	Yamashita
"	"	Universal		Not using	1	Nakasato
"	"	Universal		"	4	Yamashita
"	"	"		Hotbulb engine	1	"
"	"	"		Not using	1	Unknown
#2 Factory	"	Horizontal		Hotbulb engine	7	Yamashita
"	"	Universal		"	1	"
"	"	Vertical		Not using	1	Unknown
"	"	Universal		"	1	"
"	"	Vertical		Hotbulb engine	1	Enshu
					Total	57 basis
#3 Factory	Planer	Double housing	12f	Hotbulb engine	1	Mitsuboshi
"	"	"	"	"	1	Matsushita
"	"	"	"	Not using	1	Unknown
"	"	"	3f	Hotbulb engine	1	"
"	"	"	"	Not using	1	"
"	"	"	6f	Hotbulb engine	2	"
"	"	"	"	"	1	Kurokawa
					Total	8 basis
#2 Factory	Shaper	Universal	24"	Hotbulb engine	3	Yamashita
"	"	"	"	Not using	1	"
"	"	"	20"	"	1	Kusunoki
#3 Factory	"	"	24"	Hotbulb engine	3	Chiba
"	"	"	"	"	1	Yamashita

#2 Factory	Slotter	8" Hotbulb engine	1	Unknown
"	"	6" "	1	Hayashikaku
		Total	<u>11</u>	basis
#3 Factory	Back saw	6" Not using	1	Unknown
Store	"	" Hotbulb engine	1	Unknown
		Total	<u>2</u>	basis
	Miscellaneous polishing etc	Not using Hotbulb engine	4	
		Total	<u>15</u>	
			<u>19</u>	basis

Number of machineries to be used for Hotbulb engines

123 Basis

A HISTORY OF DAITO KIKO KABUSHIKI KAISHA

Daito Kiko Kabushiki Kaisha are established succeeding an enterprise of the former Yamashita Tekkojo carried on personally by Mr. Iwajiro Yamashita who is present President of the Company.

The establishment of Yamashita Tekkojo was in September 1931 and were producing machines in connection with the fibre industry until 1938, while in spite of his intention he was compelled to covert the productions into machine tools since 1939 due to the progress of Chinese affair.

On February 1944, investing all the equipments organized in limited company and renamed as Daito Kiko Kabushiki Kaisha.

On September 1944 enlarged the production of machine tools, receiving as order from Nagoya Military Arsenal accomodated with 20 basis of their machine tools, in addition December of the same year, by order of the Government started to produce aeroplane parts granting the use of 49 machine tools from Nakajima Hikoki K.K., Arai factory together with a part of own equipment. While before such productions are showed progress the war was over and accordingly the borrowed machinerics were returned to Nakajima Hikoki K. K. and Arsenal respectively.

After the war we, right away undertake the conversion of productions and started under the conversion permission granted by the authority the production of Hotbulb engines for fishing boat, considering the enbarresment of fishery of this district and to remedy the food condition of the country.

Our excellent technique with a complete equipment of the factory enabled us the production of superior engines and they are highly

reputed among the fishery of this district and enjoying with quantity of orders for them.

We are, therefore paying uncessing study and efforts in production of such engines and sincerely ~~may~~ hope to be able to succeed the production of the same.

Sheet

- A. Name of Company: Daito Kiko Kabushiki Kaisha.
- B. Name of Factory: -do-
- C. Location of Company & Factory:
- a. Location of Company: No.4880, Komatsu, Onoguchi-mura,
Hamana-gun, Shizuoka-ken.
- b. Location of Factory: -do-
- D. Date of establishment and first operation:
- a. Date of establishment: February 1st, 1944.
- b. Date of first operation: February 1st, 1944.
- E. History of Factory:
- a. Daito Kiko Kabushiki Kaisha are established succeeding an enterprise of the former Yamashita Tekkojo carried on personally by Mr. Iwajiro Yamashita who is present President of the Company.
- The establishment of Yamashita Tekkojo was in September 1931 and was producing machines in connection with the fibre industry until 1938, while in spite of his intention he was compelled to convert the productions into machine tools since 1939 due to the progress of Chinese affair.
- b. On February 1944, investing all the equipments organized in limited company and renamed as Daito Kiko Kabushiki Kaisha. On September 1944 enlarged the production of machine tools, receiving an order from Nagoya Military Arsenal accommodated with 20 basis of their machine tools, in addition December of the same year, by order of the Government started to produce aeroplane parts granting the use of 49 machine tools from Nakajima Hikoki K.K., Arai factory together with a part of

own equipment. While before such productions are showed progress the war was over and accordingly the borrowed machineries were returned to Nakajima Hikoki K. K. and Arsenal respectively.

c. After the war converted the productions into Hotbulb engines for fishing boat and are operating actively with a capacity since August of 20 basis of Standard 15, 20 and 30 HP per month and are paying utmost efforts to the development of the fishery in Shizuoka Prefecture and also contributing to the remedy of the present food condition of the country.

An excellent technique with a complete equipment of the factory enabled this factory the production of superior engines and they are highly reputed among the fishery of Shizuoka prefecture and are enjoying with ~~with~~ quantity of orders for them.

This company are, therefore paying unceasing study and efforts in production of such engines and sincerely hope to be able to succeed the production of the same.

F. Production during a period from year 1934 to 1937:
(This period belongs to Yamashita Tekkojo)

Yaer.	Article.	Quant.	©	Value.
1934	Calender	15	3600	54,000 Yen
	Dicker	12	800	9,600
	Mercerize machine	20	550	11,000
	Centrifugal pump	84	40	3,360
	Reeling machine repair	8	2000	16,000
	Printing machine repair	5	1500	7,500
	Drying machine roller	10	2500	25,000
				<u>126,460</u>
1935	Dicker	48	800	38,400
	Dehydrating machine	25	250	6,250
	Drying machine	20	2500	50,000
	Reeling machine repair	8	2000	16,000
	Centrifugal pump	120	40	4,800

Year	Article	Quant.	@	Value.
1935	Printing machine repair	12	2000	24,000
				<u>139,450</u>
1936	Dicker	45	800	36,000
	Dehydrating machine	60	250	15,000
	Drying machine	20	2500	50,000
	Laundry machine	42	850	35,700
	Centrifugal pump	120	55	6,600
	Reeling machine repair	10	2000	20,000
				<u>163,300</u>
1937	Dicker	55	1200	66,000
	Mercerize machine	40	1200	48,000
	Dehydrating machine	60	350	21,000
	Laundry machine	48	850	40,800
	Drying machine for reeling	8	4000	32,000
	Mercerize machine (mangle)	5	8000	40,000
	Reeling machine repair	8	2000	16,000
				<u>263,800</u>

Number of machineries equipment as of end of 1937.

Lathe	16 basis
Milling machine	2 "
Drilling machine	10 "
Shaper & Slotter	3 "
Planer	2 "
Boring machine	2 "
Gear cutting and generating machine	1 "
Grinding machine	1 "
Hack saw	1 "
Miscellaneous	<u>3 "</u>
Total	41 basis

G. Productions during a period from year 1938 to 1941.

REMARKS: This period belongs to Yamashita Tekkojo.

Year	Article	Quant.	@	Value.
1938	Dicker	60	1200	72,000 Yen
	Dehydrating machine	80	350	28,000
	Laundry machine	60	850	51,000

Year	Article	Quant.	@	Value.
1938	Centrifugal pump	145	70	10,150 Yen
	Lathe (shop contract)	150	2300	<u>345,000</u>
				506,150
1939	Turbine pump for mining	120	1500	180,000
	Lathe	240	2300	552,000
	Drilling machine	140	600	<u>84,000</u>
				816,000
1940	Turbine pump for mining	130	1500	195,000
	High speed cutting machine	130	1600	208,000
	Lathe	200	2300	460,000
	Shaper	60	5500	<u>330,000</u>
				1,193,000
1941	Milling machine	80	8284	662,720
	High speed cutting machine	360	1600	576,000
	Attachment of milling machine	50	2470	<u>123,500</u>
				1,362,220

Number of machineries equipment increased during 1938-1941.

Lathe	25 basis
Milling machine	15 "
Drilling machine	12 "
Planer	4 "
Shaper & Slotter	6 "
Boring machine	3 "
Gear cutting and generating machine	4 "
Grinding machine	2 "
Hack saw	1 "
Miscellaneous	<u>12 "</u>

Total 84 basis

Number of machineries equipment as of end of 1941: 125 Basis.

H. Productions during a period from year 1942 to 1945.

Year	Article	Quant.	@	Value.
1942	Milling machine	150	8284	1,242,600 Yen
	Attachment on above	140	2470	<u>345,800</u>
				1,588,400

Year.	Article.	Quant.	@	Value.
1943	Milling machine	192	8284	1,590,528 Yen
	Attachment on above	210	2470	518,700
				<u>2,109,228</u>
1944	On Feb. renamed as Daito Kiko Kabushiki Kaisha.			
	Milling machine	186	8284	1,540,824
	Attachment on above	120	2470	296,400
				<u>1,837,224</u>
1945	Milling machine	30	8284	248,520
	Rocker arm	80000	11.40	1,112,000
				<u>1,360,520</u>

I. Number of machineries provided for during 1942-1945.
(quantities increased during wartime)

Lathe	18 basis
Milling machine	19 "
Grinding machine	5 "
Drilling machine	12 "
Gear cutting and generating machine	1 "
Shaper & Slotter	2 "
Planer	2 "
Miscellaneous	4 "
Total	<u>63 basis</u>

Number of machineries increased after the war: 6 Basis.

Number of machineries as of end of October 1946: 194 Basis.

J. Productions after the war:

- a. Productions (monthly) since conversion into civilian industry.
Reconversion permit No.43 dated 1st Jan. 1946 granted by
Shizuoka Prefectural Government.

Month.	Article.	Quant.
Feb. 1946	Transmission case (automobile parts)	117 pcs
Mar. 1946	Transmission case (")	563 "
	Steering arm (")	80 "

Month	Article.	Quant.
Apl. 1946	Transmission case (automobile parts)	779 pcs
	Transmission case cover (")	400 "
	Steering arm (")	235 "
May 1946	Hotbulb engines for fishing boat	4 basis
June 1946	Hotbulb engines for fishing boat	9 "
	Steering arm (automobile parts)	150 pcs
	Cooling water pump (")	46 sets
July 1946	Hotbulb engines for fishing boat	8 basis
	Hotbulb engines parts	60 pcs
	Cooling water pump (automobile parts)	100 sets

b. Objection for future productions:

Article	1946 Quant.	1947 Quant.
Hotbulb engines for fishing boat	40 basis	180 basis

K. Equipments (only usable)

a. Machine tools	Quantities at present.	
	Domestic made.	Foreign made.
Lathe	64 basis	8 basis
Drilling machine	33 "	1 "
Boring machine	5 "	0
Milling machine	36 "	0
Grinding machine	8 "	2 "
Gear cutting and gear finishing machine	4 "	0
Shaper & Slotter	10 "	0
Planer	7 "	0
Hack saw	1 "	0
Miscellaneous	19 "	0

Other producing equipment:

Article.	Quant.	Capacity.
Transformer	7	310 KVA
Motor	5	25 HP
Compressor	1	5 HP
Crane	3	Handling
Casting shop:		
Electric furnace	0	
Other cupola	1	1500 kg/a day
Heat treatment shop:		
Electric furnace	0	
Other furnace	1	

L. Percentage of this factory's monthly principal production against National and Prefecture.

Article.	National production.	Prefecture production.	This factory' production.	Percentage.
Hotbulb engine for fishing boat.	170 basis	30 basis	20 basis	12 % of National 67 % of Prefecture

M. The reason of neccessity of the plant to be remain:

It is well known that the fishery of Shizuoka Prefecture are very active since before the war and the amount of catch are also one in a thousand in the country, while more than half of the fishing boats were destroyed during the war and in spite of urgent revival are required, the production in Shizuoka prefecture are not showing well advance with a monthly production of hardly 30 basis of small hotbulb engines of under standard 50 HP.

For your information this factory are at present producing easily 20 basis a month and their excellent technique are no comparison with other factories and are responding to the demand of the

fishery in Shizuoka Prefecture.

Further more this factory has already constructed a Refrigeration storage and a repair shop for engines for fishing boat at Maisaka-cho, Hamana-gun as their sister factory and a permission for the purchase of necessary machineries for the factory has been granted by the Shizuoka Military Government Team and with a close combination of both factories, this company are responding to the demand of the fishery of Enshu district in Shizuoka Prefecture in the equipping of new fishing boats with their engines and all of the repair works. It is certain that this factory are contributing to the urgent revival of the fishery in Shizuoka Prefecture and also to the remedy of the present food condition.

Under the circumstances we would be very much obliged if you would give your kind consideration to this and release from the reparative items ~~the~~ of the following machineries in order to enable this factory to continue production of above mentioned articles.

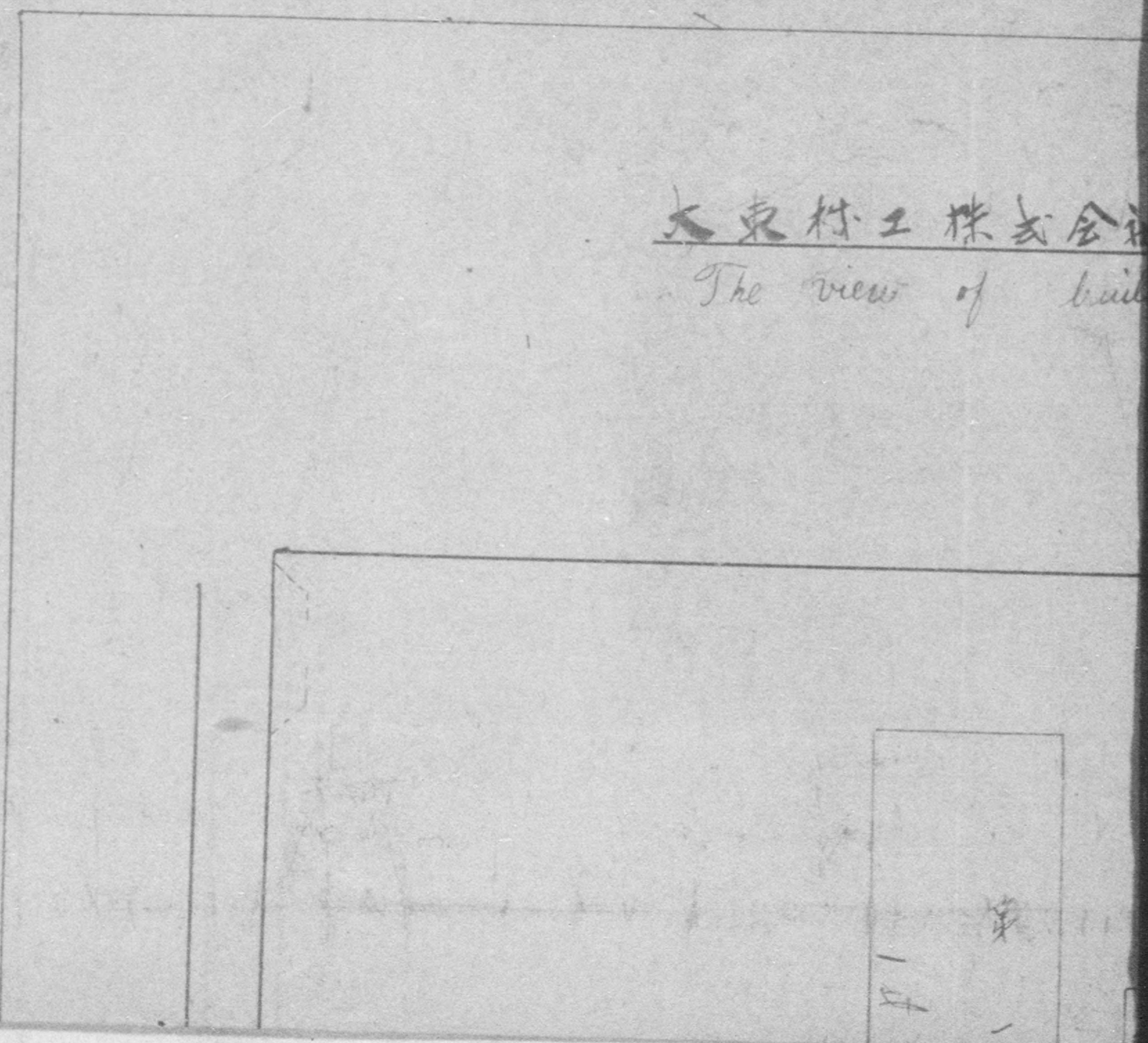
Lathes	41 Basis
Drilling machines	22 "
Boring machines	5 "
Milling machines	17 "
Grinding machines	3 "
Gear cutting and gear finishing machine	4 "
Shapers	7 "
Slotters	2 "
Planers	6 "
Hack saw	1 "

Miscellaneous	<u>15 Basis</u>
Total	<u>123 Basis</u>

This figure is equivalent of 63 % of the total number of machineries of the factory.

大東村工株式会社

The view of build



村工株式会社建築物配置図

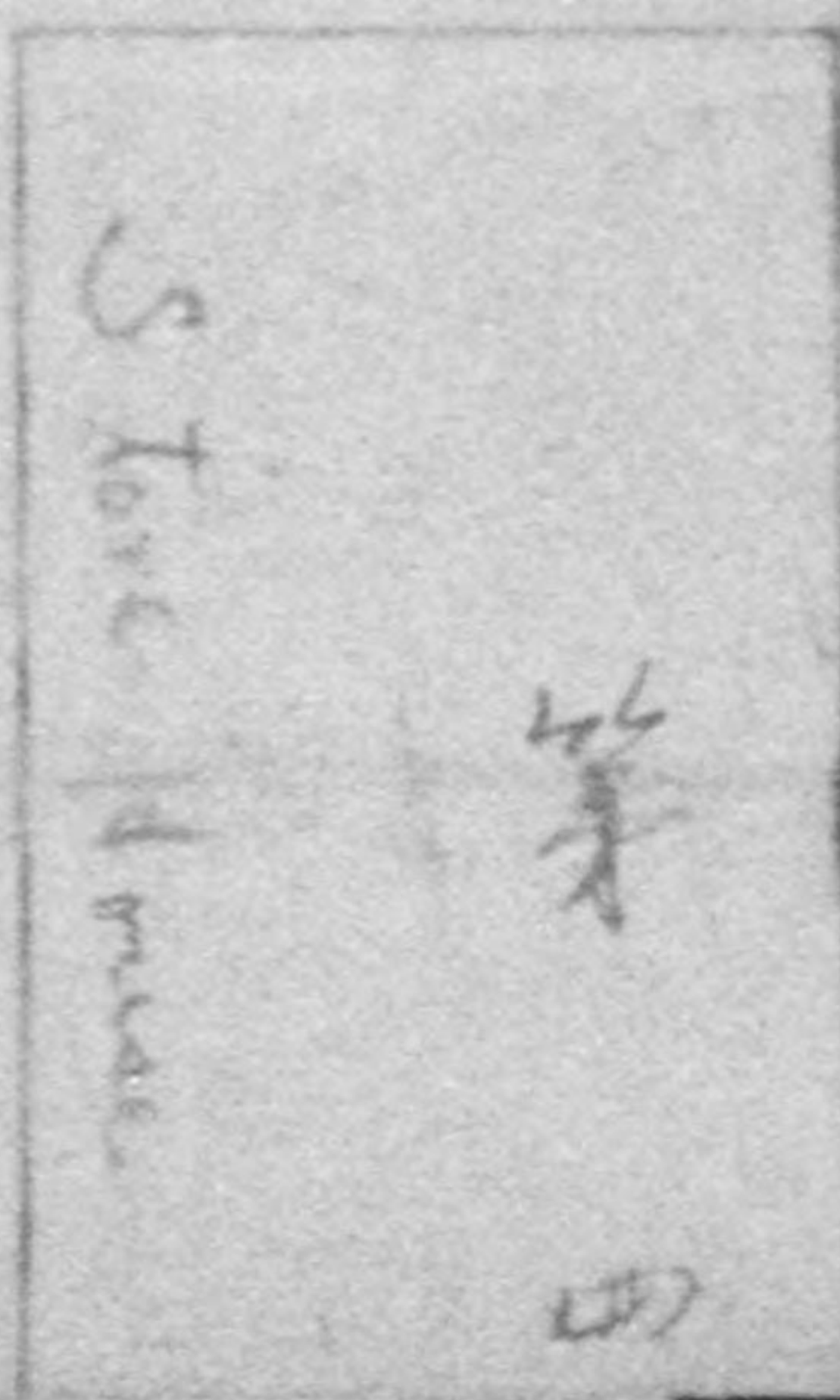
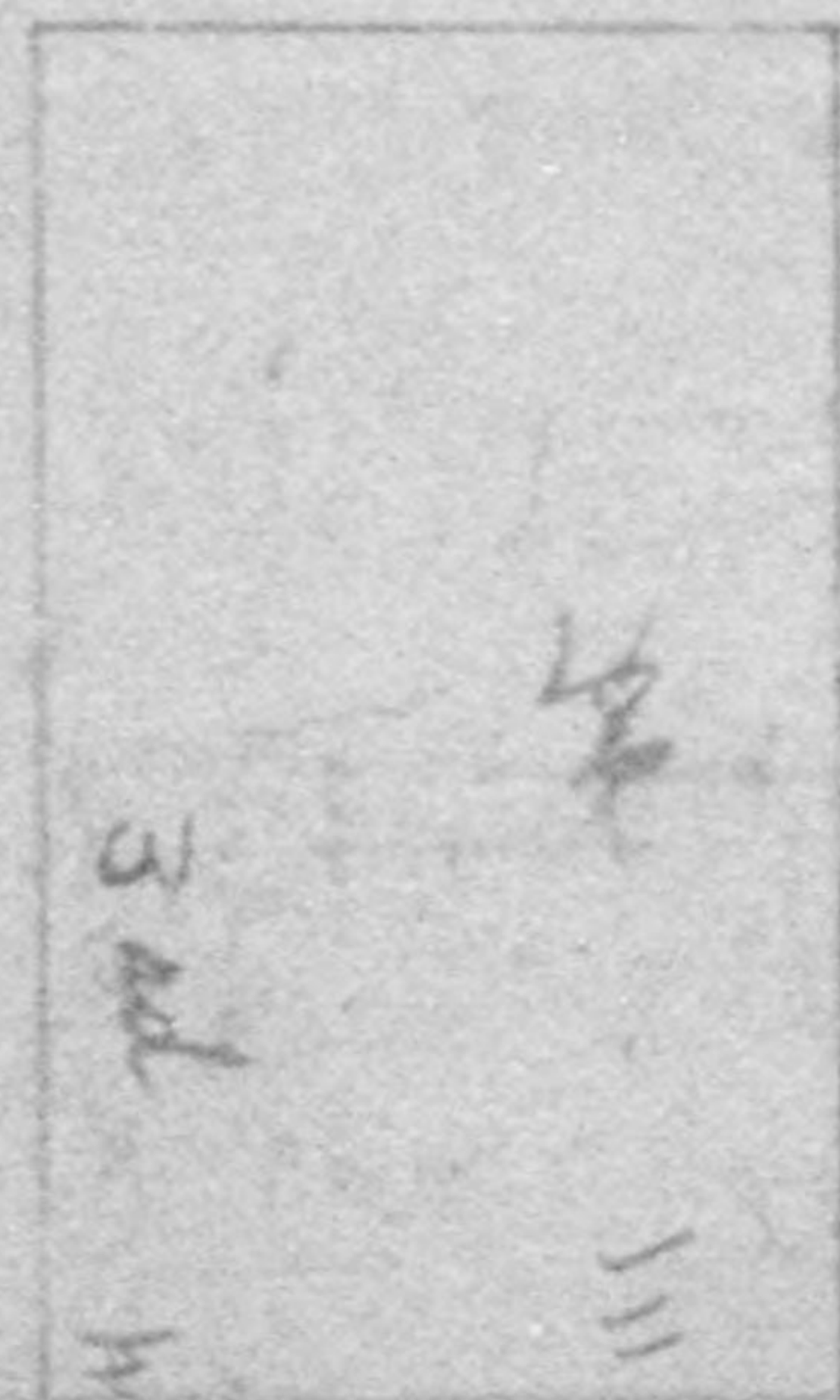
縮尺 $\frac{1}{600}$

view of building Arrangements

Scale

倉庫
Store House

木型場



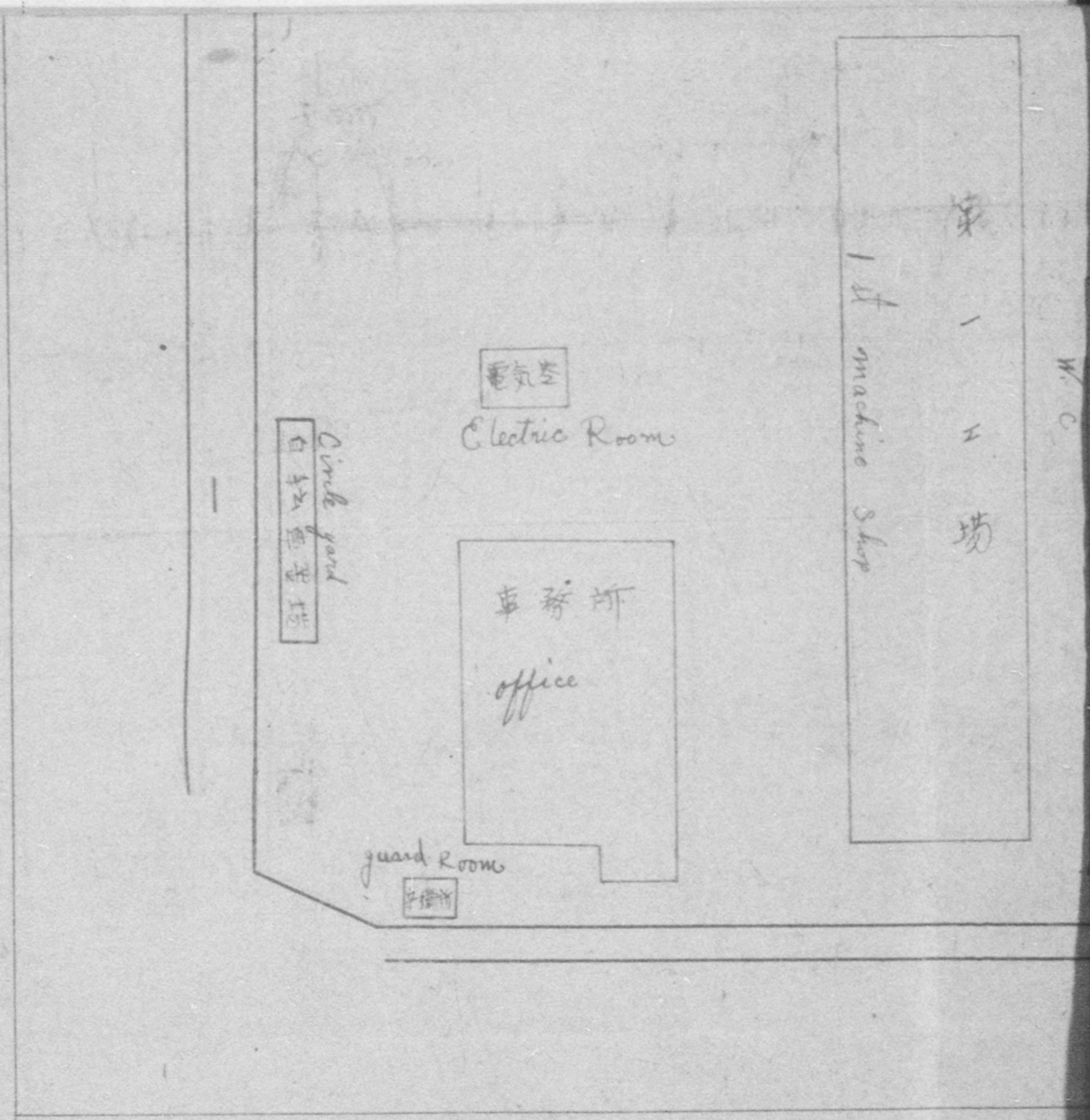
木型場

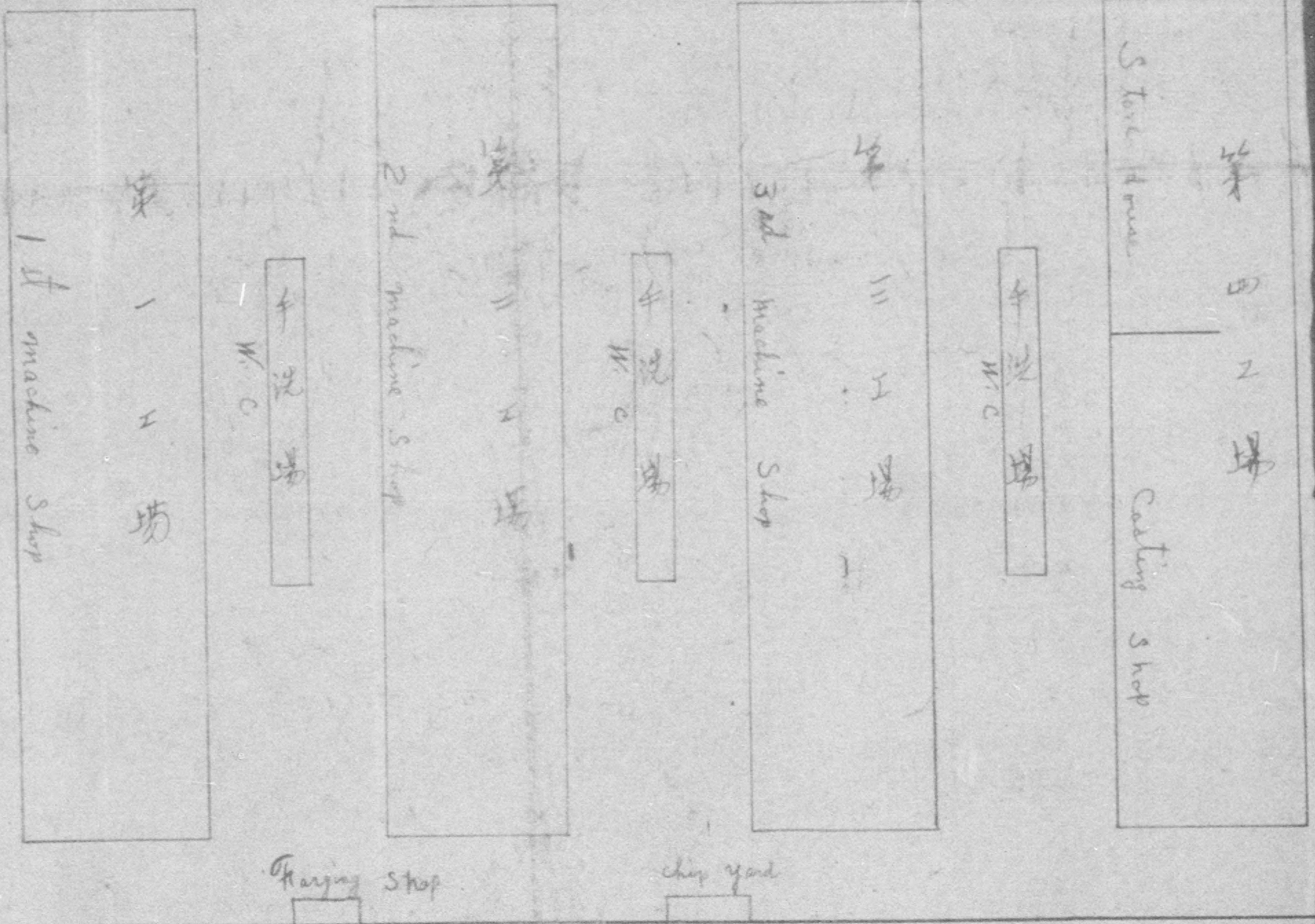
Wood Working Shop

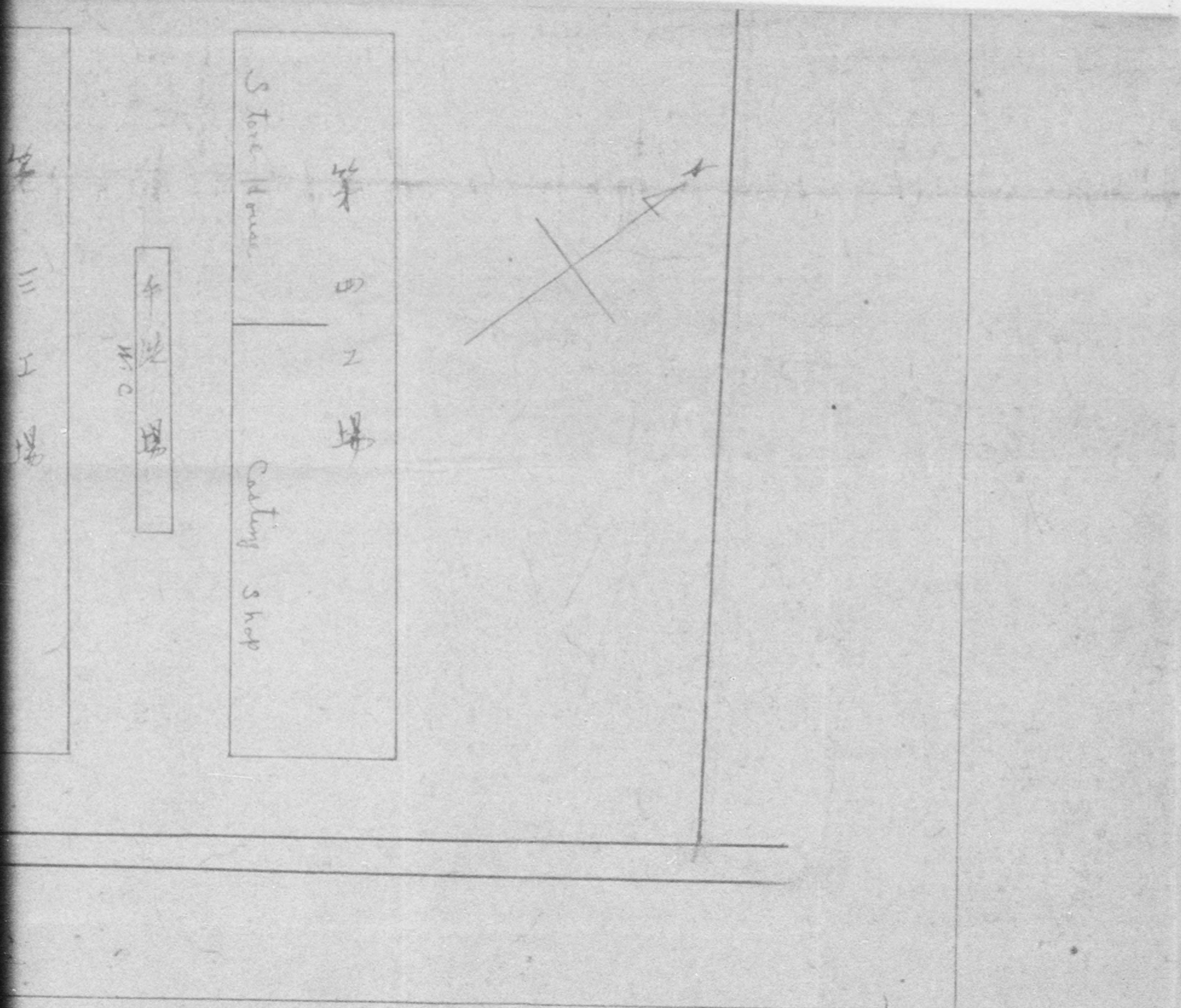
Steel House

竹田









Description of machineries equipment.

Location	Description	Type & dimension	Purpose.	Quant.	Maker.
#1 Factory	Boring machine	Horizontal 70 mm	Hotbulb engine	1	Unknown.
#3 Factory	"	" 90 "	"	1	Yamashita
"	"	" 90 "	"	1	Funabashi
"	"	" 60 "	"	1	Yamashita
"	"	" 75 "	"	1	Unknown
				Total	5 basis
#1 Factory	Drilling machine	Bench 10 inch	Not using	8	Minorikawa
#2 Factory	"	" 10 "	Hotbulb engine	3	"
#3 Factory	"	" 10 "	"	2	"
Pattern Factory	"	" 10 "	Pattern production	1	"
#1 Factory	"	Branch 12 "	Not using	1	Yamashita
"	"	" 20 "	"	1	"
"	"	" 20 "	Automobile parts	1	"
"	"	" 22 "	Hotbulb engine	3	Sugimoto
#2 Factory	"	" 25 "	"	1	Buiallo
#3 Factory	"	" 22 "	"	3	Sugimoto
#1 Factory	"	Upright 24 "	"	2	Tokio Kosaku Kikai.
"	"	" 15 "	"	2	Seikenki
#2 Factory	"	" 24 "	"	2	Tokio Kosaku Kikai
#3 Factory	"	" 15 "	"	1	Seikenki
#2 Factory	"	" 15 "	"	1	Herbert
#3 Factory	"	Radial 3 F.	Not using	2	Hayashikaku
"	"	" 5 "	Hotbulb engine	1	Hibi
"	"	" 5 "	"	1	Rokuroku
				Total	36 basis
#1 Factory	Gear Hobbers	Single spindle 18 inch	Not using	1	Unknown
#2 Factory	"	" 24 "	Hotbulb engine	3	Igawa
"	Gear finishing	Tooth chamfering	"	1	Yamashita
"	"	"	Not using	1	"
				Total	6 basis

#1 Factory	Grinding machine	External cylindrical	24"	Not using	1	Unknown.
#2 Factory	"	"	2m	Hotbulb engine	1	Kaijinkikai
"	"	"	1m	Automobile parts	1	Shinohara
"	"	"	40"	"	1	Toji
"	"	Surface	18"	Hotbulb engine	1	Asahina
"	"	"	12"	Automobile parts	1	Kokusanseiki
"	"	Tool Internal cylindrical	10 "	cutter ^{polish} _{grinding}	1	Unknown
#3 Factory	"	"	10 "	Hotbulb engine	1	Seimitsukikai
				Not using	2	Naxos
				Total	10	basis
#1 Factory	Lathe	Engine	3.5f	not using	1	Yamashita
#2 Factory	"	"	"	Automobile parts	1	"
#1 Factory	"	"	4f	Not using	4	Suyama
#2 Factory	"	"	4f	Automobile parts	1	"
"	"	"	"	"	1	Kato
#1 Factory	"	"	4.5f	Not using	4	Showa
"	"	"	"	"	1	Yamashita
#2 Factory	"	"	5f	Hotbulb engine	6	Yoshikawa
"	"	"	"	Automobile parts	2	Unknown
"	"	"	"	Hotbulb engine	3	Yamashita
#1 Factory	"	"	"	"	5	Showa
#2 Factory	"	"	6f	Not using	1	Yamashita
"	"	"	"	Hotbulb engine	2	Sega
"	"	"	"	"	10	Yamashita
#3 Factory	"	"	"	"	4	"
"	"	"	"	Automobile parts	1	Unknown.
"	"	"	"	Hotbulb engine	3	Yamashita
#2 Factory	"	"	8f	"	1	Unknown
"	"	"	"	"	1	Yamashita
#3 Factory	"	"	"	"	1	" S
#1 Factory	"	"	"	Under repair	1	Tokiokikai

#1 Factory	Grinding machine	External cylindrical 24"	Not using	1	Unknown.
#2 Factory	"	" 2m	Hotbulb engine	1	Kaijinkikai
"	"	" 1m	Automobile parts	1	Shinohara
"	"	" 40"	"	1	Toji
"	"	Surface 18"	Hotbulb engine	1	Asahina
"	"	" 12"	Automobile parts	1	Kokusanseiki
"	"	Tool Internal cylindrical 10 "	cutter ^{polish} _{grinding}	1	Unknown
#3 Factory	"	" 10 "	Hotbulb engine	1	Seimitsukikai
			Not using	2	Naxos
			Total	10	basis
#1 Factory	Lathe	Engine 3.5f	not using	1	Yamashita
#2 Factory	"	" "	Automobile parts	1	"
#1 Factory	"	" 4f	Not using	4	Suyama
#2 Factory	"	" 4f	Automobile parts	1	"
"	"	" 4.5f	"	1	Kato
#1 Factory	"	" "	Not using	4	Showa
#2 Factory	"	" "	"	1	Yamashita
"	"	" 5f	Hotbulb engine	6	Yoshikawa
"	"	" "	Automobile parts	2	Unknown
"	"	" "	Hotbulb engine	3	Yamashita
#1 Factory	"	" "	"	5	Showa
#2 Factory	"	" 6f	Not using	1	Yamashita
"	"	" "	Hotbulb engine	2	Sega
"	"	" "	"	10	Yamashita
#3 Factory	"	" "	"	4	"
"	"	" "	Automobile parts	1	Unknown.
"	"	" "	Hotbulb engine	3	Yamashita
#2 Factory	"	" 8f	"	1	Unknown
#3 Factory	"	" "	"	1	Yamashita
#1 Factory	"	" "	"	1	" S
			Under repair	1	Tokiokikai

#2 Factory	Lathe	Engine	10f	Hotbulb		
"	"	"	"	engine	1	Dean Smith
"	"	"	"	"	2	Lodge & Shipley
"	"	"	12f	"	1	Unknown
"	"	"	16f	"	1	Shiosawa
Pattern				Pattern		
Factory		Pattern	6f	production	1	Yanagi
				Total	60	basis
#1 Factory	Milling machine	Horizontal		Not using	10	Yamashita
"	"	"		Hotbulb		
"	"	"		engine	7	"
"	"	"		Automobile		
"	"	Universal		parts	2	Kawasata
"	"	Universal		Not using	1	Nakasato
"	"	"		"	4	Yamashita
"	"	"		Hotbulb		
"	"	"		engine	1	"
#2 Factory	"	Horizontal		Not using	1	Unknown
"	"	"		Hotbulb		
"	"	Universal		engine	7	Yamashita
"	"	Vertical		"	1	"
"	"	Universal		Not using	1	Unknown
"	"	Vertical		"	1	"
				Hotbulb		
				engine	1	Eashu
				Total	37	basis
#3 Factory	Planer	Double housing	12f	Hotbulb		
"	"	"	"	engine	1	Mitsuboshi
"	"	"	"	"	1	Matsushita
"	"	"	"	Not using	1	Unknown
"	"	"	8f	Hotbulb		
"	"	"	"	engine	1	"
"	"	"	"	Not using	1	"
"	"	"	6f	Hotbulb		
"	"	"	"	engine	2	"
				"	1	Kurokawa
				Total	8	basis
#2 Factory	Shaper	Bankin	24"	Hotbulb		
"	"		"	engine	3	Yamashita
"	"		"	Not using	1	"
#3 Factory	"		20"	"	1	Kusunoki
"	"		24"	Hotbulb		
			"	engine	3	Chiba
				"	1	Yamashita

#2 Factory Slotter

" "

8" Hotbulb engine	1	Unknown
6" "	1	Hayashikaku
Total	<u>2</u>	11 basis

#3 Factory Hack saw
Store

6" Not using	1	Unknown
" Hotbulb engine	1	Unknown
Total	<u>2</u>	2 basis

Miscellaneous polishing etc

Not using	4
Hotbulb engine	<u>15</u>
Total	19 basis

Number of machineries to be used for Hotbulb engines

123 Basis

#2 Factory Slotter

" "

8" Hotbulb engine	1	Unknown
6" "	1	Hayashikaku
Total	<u>2</u>	11 basis

#3 Factory Hack saw
Store

6" Not using	1	Unknown
" Hotbulb engine	1	Unknown
Total	<u>2</u>	2 basis

Miscellaneous polishing etc

Not using	4
Hotbulb engine	<u>15</u>

Total 19 basis

Number of machineries to be used for Hotbulb engines

123 Basis

A HISTORY OF DAITO KIKO KABUSHIKI KAISHA

Daito Kiko Kabushiki Kaisha are established succeeding an enterprise of the former Yamashita Tekkojo carried on personally by Mr. Iwajiro Yamashita who is present President of the Company.

The establishment of Yamashita Tekkojo was in September 1931 and were producing machines in connection with the fibre industry until 1938, while in spite of his intention he was compelled to covert the productions into machine tools since 1939 due to the progress of Chinese affair.

On February 1944, investing all the equipments organized in limited company and renamed as Daito Kiko Kabushiki Kaisha.

On September 1944 enlarged the production of machine tools, receiving an order from Nagoya Military Arsenal accommodated with 20 basis of their machine tools, in addition December of the same year, by order of the Government started to produce aeroplane parts granting the use of 49 machine tools from Nakajima Hikoki K.K., Arai factory together with a part of own equipment. While before such productions are showed progress the war was over and accordingly the borrowed machineries were returned to Nakajima Hikoki K. K. and Arsenal respectively.

After the war we, right away undertake the conversion of productions and started under the conversion permission granted by the authority the production of Hotbulb engines for fishing boat, considering the embarrassment of fishery of this district and to remedy the food condition of the country.

Our excellent technique with a complete equipment of the factory enabled us the production of superior engines and they are highly

reputed among the fishery of this district and are enjoying with quantity of orders for them.

We are, therefore paying unceasing study and efforts in production of such engines and sincerely ~~may~~ hope to be able to succeed the production of the same.

SHIZUOKA PREFECTURAL GOVERNMENT

6, November, 1946.

SUBJECT: Recommendation for the Release from Reparation
of Daito Kiko K.K.

TO : Commanding Officer,
Shizuoka Military Government Team

1. Standard type of hot-bulb engines used on fishing boats which are essential for the stabilization of people's living, are being manufactured by the subject company at the rate of 20 engines per month which is 67% of the total production in the prefecture.
2. The subject company, by the request of the fishermen's guild, has built a repair shop for the hot-bulb engines at Malsaka-cho, Hamana-gun, and is under taking most of the equipping of new fishing boats with its engines and all of the repair works in the western districts of the prefecture and is greatly contributing to the revival of fishing industry.
3. The subject company, as stated in its application, is originally a manufacturer of machines used in textile industry and not a machine tool manufacturer.

From the above-mentioned reasons, the continued operation of the subject company is absolutely necessary for the rehabilitation and stabilization of people's living and we would be much obliged if you would give your favourable consideration.

T. Kobayashi
T. KOBAYASHI, (K.Y.)
Governor,
Shizuoka Prefecture.

442

SHIZUOKA PREFECTURAL GOVERNMENT

6, November, 1946.

SUBJECT: Recommendation for the Release from Reparation
of Daito Kiko K.K.

TO : Commanding Officer,
Shizuoka Military Government Team

1. Standard type of hot-bulb engines used on fishing boats which are essential for the stabilization of people's living, are being manufactured by the subject company at the rate of 20 engines per month which is 67% of the total production in the prefecture.
2. The subject company, by the request of the fishermen's guild, has built a repair shop for the hot-bulb engines at Maisaka-cho, Hamana-gun, and is under taking most of the equipping of new fishing boats with its engines and all of the repair works in the western districts of the prefecture and is greatly contributing to the revival of fishing industry.
3. The subject company, as stated in its application, is originally a manufacturer of machines used in textile industry and not a machine tool manufacturer.

From the above-mentioned reasons, the continued operation of the subject company is absolutely necessary for the rehabilitation and stabilization of people's living and we would be much obliged if you would give your favourable consideration.

T. Kobayashi
T. KOBAYASHI, (Ch. 4)
Governor,
Shizuoka Prefecture.

Incl 2

SHIZUOKA PREFECTURAL GOVERNMENT

6, November, 1946.

SUBJECT: Recommendation for the Release from Reparation
of Daito Kiko K.K.

TO : Commanding Officer,
Shizuoka Military Government Team

1. Standard type of hot-bulb engines used on fishing boats which are essential for the stabilization of people's living, are being manufactured by the subject company at the rate of 20 engines per month which is 67% of the total production in the prefecture.
2. The subject company, by the request of the fishermen's guild, has built a repair shop for the hot-bulb engines at Maisaka-cho, Hamana-gun, and is under taking most of the equipping of new fishing boats with its engines and all of the repair works in the western districts of the prefecture and is greatly contributing to the revival of fishing industry.
3. The subject company, as stated in its application, is originally a manufacturer of machines used in textile industry and not a machine tool manufacturer.

From the above-mentioned reasons, the continued operation of the subject company is absolutely necessary for the rehabilitation and stabilization of people's living and we would be much obliged if you would give your favourable consideration.

T. Kobayashi
T. KOBAYASHI, (T.Y.)
Governor,
Shizuoka Prefecture.

Incl 2³

SHIZUOKA PREFECTURAL GOVERNMENT

6, November, 1946.

SUBJECT: Recommendation for the Release from Reparation
of Daito Kiko K.K.

TO : Commanding Officer,
Shizuoka Military Government Team

1. Standard type of hot-bulb engines used on fishing boats which are essential for the stabilization of people's living, are being manufactured by the subject company at the rate of 20 engines per month which is 67% of the total production in the prefecture.
2. The subject company, by the request of the fishermen's guild, has built a repair shop for the hot-bulb engines at Maisaka-cho, Hamana-gun, and is under taking most of the equipping of new fishing boats with its engines and all of the repair works in the western districts of the prefecture and is greatly contributing to the revival of fishing industry.
3. The subject company, as stated in its application, is originally a manufacturer of machines used in textile industry and not a machine tool manufacturer.

From the above-mentioned reasons, the continued operation of the subject company is absolutely necessary for the rehabilitation and stabilization of people's living and we would be much obliged if you would give your favourable consideration.

T. Kobayashi
T. KOBAYASHI, (L.Y.)
Governor,
Shizuoka Prefecture.

Incl 2³

證 明 書
Certificate

會社名
Name of Company

住 所
Location

大東 機工 株式會社
Date Kito Kabushiki Kaisha

靜岡縣濱名郡小野口村小松四八八〇番地
4880, Komoto, Onogoshi-mura, Hamana-gun, Shizuoka-ken

右ハ漁船用流玉機關製造ニ優劣ナハ技術ヲ有シ其ノ製品並ニ製造能力
Above mentioned company have a excellent technique in production of lathe engines
for fishing boat with a capacity of monthly productions of 20 tons and contributing to the develop-
ment of fishing in this Prefecture and we are relying on them greatly.

昭和二十一年十月二十八日
28th Oct. 1946

證 明 書

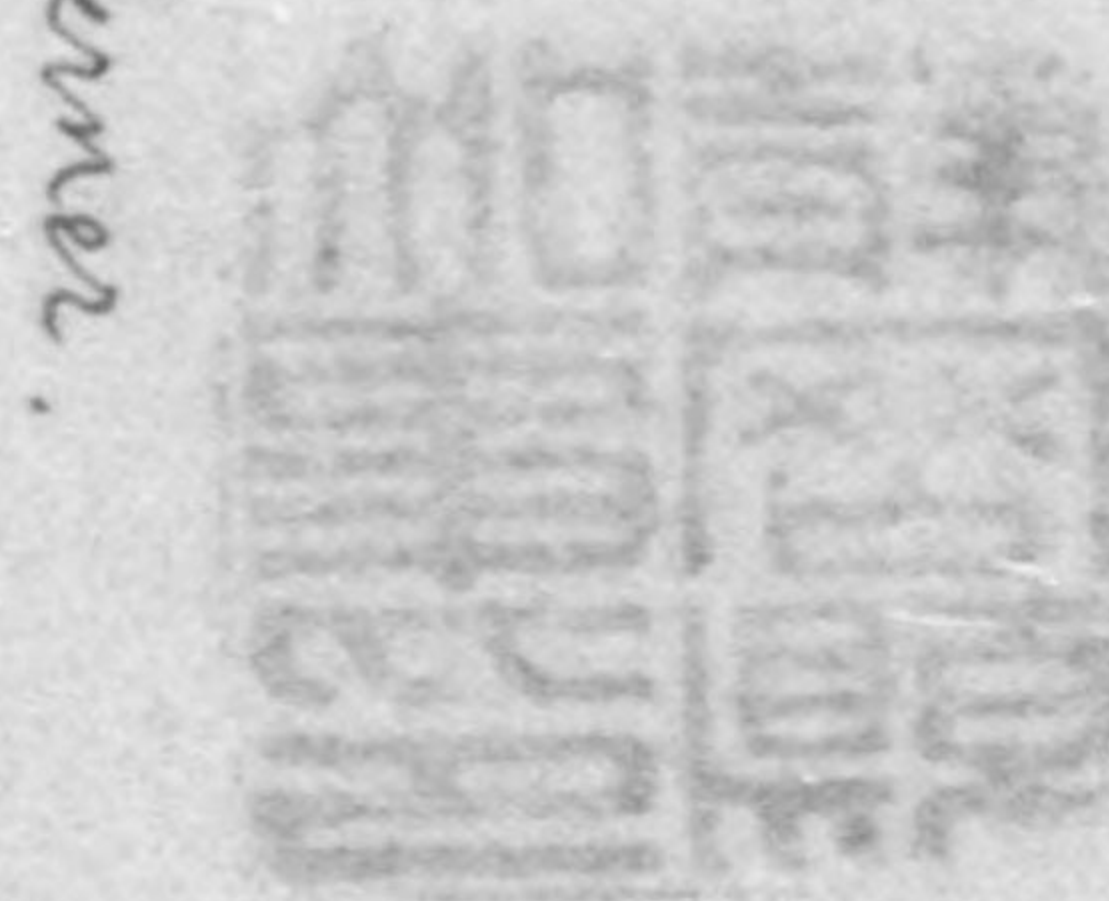
Certified

昭和二十一年十月二十八日
28th Oct. 1946

小林武治

靜岡縣政府
Shizuoka Prefectural Government

Governor



April 3

C E R T I F I C A T E

28th October 1946.

To Whom it may concern.

Dear Sirs:

We, the undersigned hereby certify that Daito Kiko Kabushiki Kaisha of No. 4880, Komatsu, Onoguchi-mura, Hamana-gun, Shizuoka-ken have a excellent technique in production of Hotbulb engines for fishing boat with a capacity of monthly productions of 20 basis and are contributing to the development of the fishery in this prefecture and we are relying on them greatly.

We are, Yours truly,

SHIZUOKA PREFECTURAL GOVERNMENT,

.....
GOVERNOR.

Incl 3

C E R T I F I C A T E

copy

28th October 1946.

To Whom it may concern.

Dear Sirs:

We, the undersigned hereby certify that Daito Kiko Kabushiki Kaisha of No. 4880, Komatsu, Onoguchi-mura, Hamana-gun, Shizuoka-ken have a excellent technique in production of Hotbulb engines for fishing boat with a capacity of monthly productions of 20 basis and are contributing to the development of the fishery in this prefecture and we are relying on them greatly.

We are, Yours truly,

SHIZUOKA PREFECTURAL GOVERNMENT,

.....
GOVERNOR.

Incl 3^s

C E R T I F I C A T E

copy

28th October 1946.

To Whom it may concern.

Dear Sirs:

We, the undersigned hereby certify that Daito Kiko Kabushiki Kaisha of No. 4880, Zomatsu, Onoguchi-mura, Hamana-gun, Shizuoka-ken have a excellent technique in production of Hotbulb engines for fishing boat with a capacity of monthly productions of 20 basis and are contributing to the development of the fishery in this prefecture and we are relying on them greatly.

We are, Yours truly,

SHIZUOKA PREFECTURAL GOVERNMENT,

.....
GOVERNOR.

Recd 3³

C E R T I F I C A T E

copy

28th October 1946.

To Whom it may concern.

Dear Sirs:

We, the undersigned hereby certify that Deito Kiko Kabushiki Kaisha of No. 4880, Komatsu, Onoguchi-mura, Hamana-gun, Shizuoka-ken have a excellent technique in production of Hotbulb engines for fishing boat with a capacity of monthly productions of 20 basis and are contributing to the development of the fishery in this prefecture and we are relying on them greatly.

We are, Yours truly,

SHIZUOKA PREFECTURAL GOVERNMENT,

.....
GOVERNOR.

Dec 34

C E R T I F I C A T E

November 2nd, 1946.

To Whom it may concern.

Dear Sirs;

We, the undersigned hereby certify that Daito Kiko Kabushiki Kaisha of No.4880 Komatsu, Onoguchi-mura, Hamana-gun Shizuoka-ken are producing Hotbulb engines for fishing boat with a capacity of monthly productions of 20 basis of ^{Standard} 15 H.P., besides are under preparation in production of 20 and 30 H.P. and are contributing greatly to the revival of the fishery in Shizuoka prefecture.

We are, Yours truly,

UNYUSHO KAIUNSO KYOKU SENPAKUKYOKU,

(Ministry of Transportation,
General Marine Transportation Office,
Ships Bureau,)

Director.

Incl 4

C E R T I F I C A T E

November 2nd, 1946.

To Whom it may concern.

Dear Sirs;

We, the undersigned hereby certify that Daito Ziko Kabushiki Kaisha of No.4880, Komatsu, Onaguchi-mura, Hamana-gun Shizuoka-ken are producing Hotbulb engines for fishing boat with a capacity of monthly productions of 20 basis of Standard 15 H.P., besides are under preparation in production of 20 and 30 H.P., and are contributing greatly to the revival of the fishery in Shizuoka Prefecture.

We are, Yours truly,

UNYUSHO KAIUNSOXYOKU SENPAKUKYOKU,
(Ministry of Transportation,
General Marine Transportation Office,
Ships Bureau)

Director.

Incl 4³

C E R T I F I C A T E *Copy*

November 2nd, 1946.

To Whom it may concern.

Dear Sirs;

We, the undersigned hereby certify that Daito Kiko Kabushiki Kaisha of No.4880, Komatsu, Onaguchi-mura, Hamana-gun Shizuoka-ken are producing Hotbulb engines for fishing boat with a capacity of monthly productions of 20 basis of Standard 15 H.P., besides are under preparation in production of 20 and 30 H.P., and are contributing greatly to the revival of the fishery in Shizuoka Prefecture.

We are, Yours truly,

UNYUSHO KAIUNBOKYOKU SENPAKUKYOKU,
(Ministry of Transportation,
General Marine Transportation Office,
Ships Bureau)

Director.

Incl 4

C E R T I F I C A T E

To Whom it may concern.

November 1st, 1946.

Dear Sirs;

We, the undersigned hereby certify that Daito Kiko Kabushiki Kaisha of No.4880, Komatsu, Onoguchi-mura, Hamana-gun Shizuoka-ken are the member of Shizuokaken Nainenki Kogyokai and are producing monthly over 20 basis of Hotbulb engines for fishing boat (standard 15, 20, 30 HP) with a excellent technique and a complete equipment of the factory and are unavoidable factory for the development of the fishery under the present food condition of the country.

We are,

Yours truly,

NIPPON HAKUYO MAINENKI TOSEI KUMIAI,

Lucl

C E R T I F I C A T E

November 1st, 1948.

To Whom it may concern.

Dear Sirs;

We, the undersigned hereby certify that Daito Kiko Kabushiki Kaisha of No.4880, Komatsu, Onoguchi-mura, Hamana-gun, Shizuoka-ken are the member of Shizuokaken Nainenki Kogyokai and are producing monthly over 20 basis of Hotbulb engines for fishing boat (Standard 15, 20, 30 HP) with a excellent technique and a complete equipment of the factory and are unavoidable factory for the development of the fishery under the present food condition of the country.

We are, Yours truly,

NIPPON HAKUYO NAINENKI TOSEI KUMIAI.

.....

Handwritten signature

C E R T I F I C A T E

copy

November 1st, 1946.

To Whom it may concern.

Dear Sirs;

We, the undersigned hereby certify that Daito Kiko Kabushiki Kaisha of No.4880, Komatsu, Onoguchi-mura, Hamana-gun, Shizuoka-ken are the member of Shizuokaken Nainenki Kogyokai and are producing monthly over 20 basis of Hotbulb engines for fishing boat (Standard 15, 20, 30 HP) with a excellent technique and a complete equipment of the factory and are unavoidable factory for the development of the fishery under the present food condition of the country.

We are, Yours truly,

NIPPON HAKUYO NAINENKI TOSEI KUMIAI.

.....

Incl 5th

證明書
Certificate

會社名
Name of Company

住所
Address

大東 鐵工 株式會社
Daigo Tetsu Kogyo K.K.

静岡県浜名郡小野口村小松四八八〇番地
No. 4880, Komatsu, Onyachi-mura, Hamanogun, Shizuoka Ken.

右ハ日本船用内燃機試制組合員ニシテ且下跪玉機關ニ轉換活潑ニ製作ヲ
進行中ニシテ月産台數二十台(農林用馬力十五馬力)當地漁業界ノ復興ニ貢
獻スル所大ナリ
boats of 15HP and are contributing greatly to the fishery in this district.
尚三十馬力、二十馬力 船玉機關モ製作準備中ナリ
They are also preparing for the production of 20 and 30 HP engines at present.
昭和二十一年十月 日

右相違ナキコトヲ證明ス

右相違ナキコトヲ證明ス
Certificate

昭和二十一年十月二十五日

25 Oct. 1946

東海海運局清水支局

Tohoku Kaimenko Kaisha Shizuoka Branch



2nd 6

C E R T I F I C A T E

copy

25th, October 1946.

To Whom it may concern.

Dear Sirs;

We, the undersigned hereby certify that Daito Kiko Kabushiki Kaisha of No. 4880, Komatsu, Onoguchi-mura, Hamana-gun, Shizuoka-ken are the member of Nippon Senpaku Nainenki Tosei Kumiai and are operating actively production of Hotbulb engines for fishing boat with a capacity of monthly productions of 20 basis of 15 HP and are contributing greatly to the fishery in this district. They are also preparing for the production of 20 and 30 HP engines at present.

We are, Yours truly,

TOKAI KAIUNKYOKU, SHIMIZU BRANCH,

.....

Incl 62

C E R T I F I C A T E

copy
25th, October 1946.

To Whom it may concern.

Dear Sirs;

We, the undersigned hereby certify that Daito Kiko Kabushiki Kaisha of No. 4880, Komatsu, Onoguchi-mura, Hamana-gun, Shizuoka-ken are the member of Nippon Senpaku Nainenki Tosei Kumiai and are operating actively production of Hotbulb engines for fishing boat with a capacity of monthly productions of 20 basis of 15 HP and are contributing greatly to the fishery in this district. They are also preparing for the production of 20 and 30 HP engines at present.

We are,

Yours truly,

TOKAI KAIUNKYOKU, SHIMIZU BRANCH,
.....

Incl 6³

C E R T I F I C A T E

copy

25th, October 1946.

To Whom it may concern.

Dear Sirs;

We, the undersigned hereby certify that Daito Kiko Kabushiki Kaisha of No. 4880, Komatsu, Onoguchi-mura, Hamana-gun, Shizuoka-ken are the member of Nippon Senpaku Nainenki Tosei Kumiai and are operating actively production of Hotbulb engines for fishing boat with a capacity of monthly productions of 20 basis of 15 HP and are contributing greatly to the fishery in this district. They are also preparing for the production of 20 and 30 HP engines at present.

We are, Yours truly,

TOKAI KAIUNKYOKU, SHIMIZU BRANCH,

.....

Incl 64

證明書
Certificate

一 會社名
Name of Company
大東 濠工株式會社
Daito Kito Kabushiki Kaisha

一 住所
Location
靜岡縣濱名郡小野口村小松四八八〇番地
4880, Komatsu, Onigouchi-mura, Yamana-gun, Shizuoka-ken.

右ハ本縣西部地方ニ於ケル唯一ノ漁船用燒玉機關製造工場ニシテ十五馬力、二十馬力、三十馬力等月産二十台ノ製造能力ヲ保有シ本縣漁業ノ發展ニ重大ナル關係ヲ有スル工場ナリ

Above mentioned company are the only factory in production of hot bulb engines for fishing boat in the Western district of this prefecture and they have a capacity of monthly production of 20 boats of 15, 20 and 30 H.P. and closely connected with the development of industry in this Prefecture.

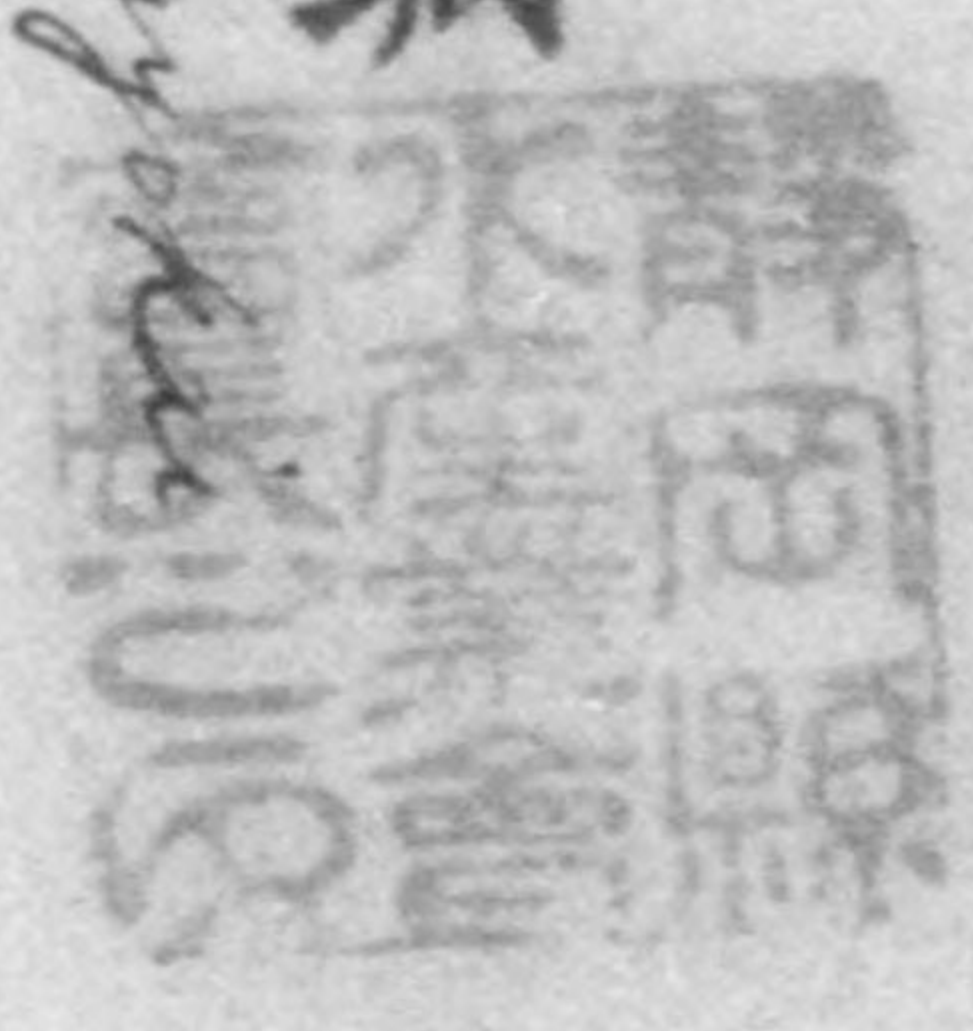
昭和二十一年十月二十八日

28th Oct. 1946

右證明書

Certificate

靜岡市追手町二二九
靜岡縣水産業會
會長 勝亦干城



Shizuoka-Ken Suison gyokai

Incl 7

C E R T I F I C A T E

28th, October 1946.

To Whom it may concern.

Dear Sirs;

We, the undersigned hereby certify that Daito Kiko Kabushiki Kaisha of No.4880, Komatsu, Onoguchi-mura, Hamana-gun, Shizuoka-ken are the only factory in production of Hotbulb engines for fishing boat in the Western district of this Prefecture and they have a capacity of monthly production of 20 basis of 15, 20 and 30 HP and closely connected with the development of fishery in this Prefecture.

We are, Yours truly,

SHIZUOKAKEN SUISANGYOKAI,

.....

Incl 7

C E R T I F I C A T E

28th, October 1946.

To Whom it may concern.

Dear Sirs;

We, the undersigned hereby certify that Daito Kiko Kabushiki Kaisha of No.4880, Komatsu, Onoguchi-mura, Hamana-gun, Shizuoka-ken are the only factory in production of Hotbulb engines for fishing boat in the Western district of this Prefecture and they have a capacity of monthly production of 20 basis of 15, 20 and 30 HP and closely connected with the development of fishery in this Prefecture.

We are, Yours truly,

SHIZUOKAKEN SUISANGYOKAI,

.....

Incl 7³

C E R T I F I C A T E *copy*

28th, October 1946.

To Whom it may concern.

Dear Sirs;

We, the undersigned hereby certify that Daito Kiko Kabushiki Kaisha of No.4880, Komatsu, Onoguchi-mura, Hamana-gun, Shizuoka-ken are the only factory in production of Hotbulb engines for fishing boat in the Western district of this Prefecture and they have a capacity of monthly production of 20 basis of 15, 20 and 30 HP and closely connected with the development of fishery in this Prefecture.

We are, Yours truly,

SHIZUOKAKEN SUISANGYOKAI,
.....

Incl 74

證書
Certificate

一 會社名
Name of Company

一 住 所
Address

大 塚 機 工 株式会社
Osaka Kiko K.K.

靜岡縣濱名郡小野口村小松四八八〇番地
No. 4880, Konatsu, Onoguchi-mura, Hamana-gun, Shizuoka Ken.

右ハ當會ノ特約工場ニシテ月産二十日(農林馬力十五馬力)ノ製造能
Above mentioned company has a capacity of monthly production of 20 tons of hotball engines
力ヲ有シ其ノ優秀ナル技術ハ他社ノ遠ク及バザル所ニシテ靜岡縣西部
(IHP) for fishing boat and made a special contract with our association. Their excellent technique are no comparison
地方漁業ノ發展ノ爲ニ必要快ク可カラザル工場ナリ
with others and numbers of their production are already in operation in this district. We assert that they
尙同社ノ製品ハ既ニ當地漁場ニ於テ多數活躍中ナリ
are unavoidable factors for the development of fishery in the western district of Shizuoka-ken.

右
Certified
明
入

昭和廿一年拾月廿二日

29 Nov. 1946

靜岡縣濱名郡舞阪町

舞阪町漁業會

Matsubacho Ryogyokai



CERTIFICATE

28th October 1946.

To Whom it may concern.

Dear Sirs:

We, the undersigned hereby certify that Daito Kiko Kabushiki Kaisha of No. 4880, Komaten, Onoguchi-mura, Hamar-gun, Shizuoka-ken have a capacity of monthly production of 20 basis of Hotbulb engines (15 HP) for fishing boat and made a special contract with our association.

Their excellent technique are no comparison with others and number of their products are already in operation in this district.

We assert that they are unavoidable factory for the development of the fishery in the Western district of Shizuoka Prefecture.

We are, Yours truly,

MAISAKACHI CYOGYOKAI.

.....

82

CERTIFICATE

copy

28th October 1946.

To Whom it may concern.

Dear Sirs:

We, the undersigned hereby certify that Daito Kiko Kabushiki Kaisha of No. 4880, Komatsu, Onoguchi-mura, Hamamatsu-gun, Shizuoka-ken have a capacity of monthly production of 20 basis of Hotbulb engines (15 HP) for fishing boat and made a special contract with our association.

Their excellent technique are no comparison with others and number of their products are already in operation in this district.

We assert that they are unavoidable factory for the development of the fishery in the Western district of Shizuoka Prefecture.

We are, Yours truly,

MAISAKACHI GYOGYOKAI,

.....

True

C E R T I F I C A T E

28th October 1946.

To whom it may concern.

Dear Sirs:

We, the undersigned hereby certify that Daito Kiko Kabushiki Kaisha of No. 4880, Komatsu, Onoguchi-mura, Hamana-gun, Shizuoka-ken have a capacity of monthly production of 20 basis of Hotbulb engines (15 HP) for fishing boat and made a special contract with our association.

Their excellent technique are no comparison with others and number of their products are already in operation in this district.

We assert that they are unavoidable factory for the development of the fishery in the Western district of Shizuoka Prefecture.

We are, Yours truly,

MAISAKACHU GYOGYOKAI,

.....

Inclosure

C E R T I F I C A T E

29th October 1946.

To whom it may concern.

Dear Sirs:

We, the undersigned hereby certify that Daito Kiko Kabushiki Kaisha of No. 4880, Komatsu, Onoguchi-mura, Hamana-gun, Shizuoka-ken have a capacity of monthly production of 20 basis of Hotbulb engines (15 HP) for fishing boat and made a special contract with our association.

Their excellent technique are no comparison with others and number of their products are already in operation in this district.

We assert that they are unavoidable factory for the development of the fishery in the Western district of Shizuoka Prefecture.

We are, Yours truly,

MAISAKACHE GYOGYŪKAI,

.....

Incl 84

STATEMENT OF JAPANESE WAR INDUSTRIES DESIRING TO RECONVERT
OR TO RESUME OPERATION

Date 17 Dec. 1945.

1. Name of firm Daito Industrial Co. Ltd.

2. Official Address (main Office) 4880, Komaba, Onoguchi-cho,
Hamana-gun, Shizuoka prefecture

3. Address of Factory Same as above

4. Date incorporated or commenced operation February, 1944

5. Names of items manufactured during war Machine Tools airplanes part

6. What commodities will be manufactured? Special domestic pumps, small
engines for fishing ship, small engines for agriculture,

7. The present machinery, tools and equipment in the factory can be used,
without modification or conversion in any way in the production of
civilian goods. Refrigerators, fans & Kettles, Automobile parts

Yes - No S.O.

8. The above information is acknowledged to be true and correct. I am
authorized to sign for the above company.

Name of applicant : Shinsu, Onda.
relationship to company making application Manager of the factory

STATEMENT OF JAPANESE WAR INDUSTRIES DESIRING TO RECONVERT
OR TO RESUME OPERATION

Date 17 Dec, 1945.

1. Name of firm Daito Industrial Co. Ltd.
2. Official Address (main office) 4880, Komatsu, Onomichi-mura,
Hamana-gun, Shizuoka prefecture
3. Address of Factory Same as above
4. Date incorporated or commenced operation February, 1944
5. Names of items manufactured during war Machine Tools airplane part
6. What commodities will be manufactured? Special domestic pumps, small
engines for fishing ship, small engines for agriculture,
Refrigerators, Fans & Kettles, Automobile parts.
7. The present machinery, tools and equipment in the factory can be used, without modification or conversion in any way in the production of civilian goods.
- Yes - No - S.O.
8. The above information is acknowledged to be true and correct. I am authorized to sign for the above company.

Name of applicant : Shino, Onda.Relationship to company making application Manager of the factory

Application for the permission of conversion to the
essential consumers commodities.

Daito Kiko Kabushiki-kaisha.
(Daito Industrial Co. Ltd.)

Application for the permission of conversion to the essential consumers commodities.

- 1 Name Daito Kiko Kabushiki-kaisha.
(Daito Industrial Co. Ltd.)
- 2 Capital 2000000 yen (Authorized capital.)
- 3 Ownership Iwajiro, Yamashita. (25% Director of company)
Masasuke, Murakami. (25%)
- 4 Relation to the government No relation
- 5 Date of foundation

A Company	1 February 1944
B Factory	10 July 1944
- 6 Location

A company	No. 4880, Kenatsu, Oneguochi-mura, Hanana-gun, Shizuoka prefecture.
B Factory	<i>As stated above</i>
- 7 General description of machinery and plant

A The site of company in square meter	10500	
B Building		
Machine shop	6950	
Casting shop	1050	
Warehouse	1650	
Office etc.	2900	
C Equipment		
Name	Quantity	
Machine tools	263	
Industrial machines	2	
Electric machines	23	
Machines for wood-working	3	
Minute measuring apparatus	5	
Casting furnace	1	
D Stocked materials		
Name	For military enterprise	For popular enterprise
Cast iron	20 ten	160 ten
Steel	3	27
Non ferrous	15	8

8 Number of employees

68

9 Production before the war

Name
Machine tools

Quantity of each month
40

10 Production during the war

Name
Machine tools
Aeroplane part
(Recker arms)

Quantity of each month
30
8500

11 Future plan of production

Items expected to be manufactured	Quantity of each month	Principal material			Time to be begun	Remarks
		cast iron	steel	non ferrous		
		kg	kg	kg		
Special domestic pumps	100	1300	80	22	1 Nov. 1945	
Small engines for fishing ship (from 6HP to 60)	10	19500	2300	560	10 Nov. 1945	
Small engines for agriculture (from 2HP to 8)	20	1500	500	28	1 April 1946	
Refrigerators (1HP to 5HP)	20	6000	1000	370	10 March 1946	
Pans & Kettles	1000			1125	1 Nov. 1945	We discontinue the work when it was made up to 2000 pieces
Automobile parts						In negotiation

26 October 1945.

Iwajiro, Yamashita,

STATEMENT OF JAPANESE WAR INDUSTRIES DESIRING TO RECONVERT
OR TO RESUME OPERATION

Date 17, Dec. 1945.

- 58
1. Name of firm Daito Industrial Co. Ltd.
2. Official Address (main office) 4830, Komatsu, Onoguchi-mura,
Hamana-gun, Shizuoka prefecture
3. Address of Factory Same as above
4. Date incorporated or commenced operation February, 1944
5. Names of items manufactured during war Machine tools Airplane part
6. What commodities will be manufactured? Special domestic pumps, Small
engines for fishing ship, Small engines for agriculture,
Refrigerators, Fans & Kettles, Automobile parts
7. The present machinery, tools and equipment in the factory can be used, without modification or conversion in any way in the production of civilian goods.
Yes - S.O.
8. The above information is acknowledged to be true and correct. I am authorized to sign for the above company.

Name of applicant :

Shuichi Onda

Relationship to company making application

Manager of this factory

Application for the permission of conversion to the
essential consumers commodities.

Daito Kiko Kabushiki-kaisha.
(Daito Industrial Co. Ltd.)

Application for the permission of conversion to the essential consumers commodities.

- 1 Name Daito Kiko Kabushiki-kaisha.
(Daito Industrial Co. Ltd.)
- 2 Capital 2000000 yen. (Authorized capital)
- 3 Ownership Iwajiro, Yanashita. (25% Director of company)
Masuzuke, Murakami. (25%)
- 4 Relation to the government. No relation.

- 5 Date of foundation.
 - A Company 1 February 1944
 - B Factory 10 July 1944

- 6 Location
 - A Company No. 4880, Kenatsu, Oneguchi-mura,
Hamana-gun, Shizuoka prefecture.
 - B Factory As stated above

- 7 General description of machinery and plant.
 - A The site of company in square meter 10500
 - B Building
 - Machine shop in square meter 6950
 - Casting shop 1050
 - Warehouse 1650
 - Office etc. 2900
 - C Equipment

Name	Quantity
Machine tools	263
Industrial machines	2
Electric machines	23
Machines for seed-perking	3
Minute measuring apparatus	5
Casting furnace	1
D Stocked materials	

Name	Per military enterprise	Per popular enterprise
Cast iron	20 ten	160ten
Steel	3	27
Non ferrous	15	8

Application for the permission of conversion to the essential consumers commodities.

- 1 Name Daito Kiko Kabushiki-kaisha.
(Daito Industrial Co. Ltd.)
- 2 Capital 2000000 yen. (Authorized capital)
- 3 Ownership Iwajiro, Yanashita. (25% Director of company)
Masasuke, Murakami. (25%)
- 4 Relation to the government. No relation.
- 5 Date of foundation.
A Company 1 February 1944
B Factory 10 July 1944

- 6 Location
A Company No. 4880, Kenatsu, Oneguchi-mura,
Hamana-gun, Shizuoka prefecture.
B Factory As stated above

- 7 General description of machinery and plant.
A The site of company in square meter 10500
B Building
Machine shop in square meter 6950
Casting shop 1050
Warehouse 1650
Office etc. 2900

C Equipment

Name	Quantity
Machine tools	263
Industrial machines	2
Electric machines	23
Machines for wood-working	3
Minute measuring apparatus	5
Casting furnace	1

D Stocked materials

Name	Per military enterprise	Per popular enterprise
Cast iron	20 ten	160ten
Steel	3	27
Non ferrous	15	8

8 Number of employees

68

9 Production before the war

Name
Machine tools

Quantity of each month
40

10 Production during the war

Name
Machine tools
Aeroplane part
(Rocker arms)

Quantity of each month
30
8500

11 Future plan of production

Items expected to be manufactured	Quantity of each month	Principal material			Time to be begun	Remarks
		cast iron	steel	non ferrous		
		kg	kg	kg		
Special domestic pumps	100	1300	80	22	1 Nov. 1945	
Small engines for fishing ship (from 6HP to 60)	10	19500	2300	560	10 Nov. 1945	
Small engines for agriculture (from 2HP to 8)	20	1500	500	28	1 April 1946	
Refrigerators (1HP to 5HP)	20	6000	1000	370	10 March 1946	
Pans & Kettles	1000			1125	1 Nov. 1945	We discontinue the work when it was made up to 2000 pieces
Automobile parts						In negotiation

26 October 1945.

Iwajiro, Yamashita.

AIRCRAFT
(Type of Industry)

File No. _____

Daito Kiko Co. Ltd.
(Name of Industry)

Iwajiro Yamashita.

Headquarters
25th Infantry Division, APO 25
Office of the AC of S, G-2

INDUSTRIAL SURVEY QUESTIONNAIRE

1. Date of Inspection _____ Serial Number of Installation _____

2. Inspecting Officer: _____
(Name, Rank, Unit)

3. Address: No. 4880, Komatsu, Onoguchimura Hamanagun, Shizuoka.

4. Coordinate Location: _____

5. History and Capital Structure: _____

a. Date of Construction: 1 February 1944

b. Date of First Operation: 1 February 1944

c. 1935-1941 Production (Annual value in Yen; quantities of principal products by unit or weight) _____
Nil.

d. Present Capitalization in Yen ¥ 5,608,180. --

e. Changes in Capital Structure since 1935: The company was founded in 1 February 1944 and the capital is 2,000,000 Yen (Authorized capital). No changes in capital structure.

f. Name and address of parent company: Nissan motor-vehicles Co. Ltd. No. 2, Tokura-cho, Kanagawa, Yokohama.

g. Number of shares outstanding: 40,000 shares.

h. Value of each share: ¥ 50. --

i. Number of stock holders (Name of each individual owning more than 10% of total stocks) _____

Iwajiro Yamashita. Itaro Tabata.
Yoshio Saito.
Noboru Nakane.

j. Funds received from Government (Bounties, subsidies, etc) _____
Nil.

6. General Description:

a. Principal Products:

(1) Wartime: Horizontal Milling machine

Aeroplane parts: Rocker arm, Piston, Impeller, Balance weights, Small engines for fishing boats.

(2) Present: Parts of motor vehicles: Piston, Transmission case cover, Steering arm etc.

(3) Planned for 1946-1947: Please turn over.

b. Capacity:

P.T.O.

(1) Wartime: _____

(2) Present: _____

(3) Planned for 1946-1947: _____

c. Number of Employees:

(1) Wartime: _____ 553

(2) Present: _____ 128

(3) Planned for 1946-1947: _____ 300.

7. Machinery and Equipment in Plant at Present:

<u>Description</u>	<u>Quantity</u>	<u>Condition</u>
<u>Machine tools</u>	<u>263</u>	<u>Good</u>
<u>Industrial machines</u>	<u>2</u>	<u>"</u>
<u>Other equipments</u>	<u>38</u>	<u>"</u>

8. Present stocks of raw materials, supplies and unfinished products:

<u>Description</u>	<u>Quantity</u>	<u>Condition</u>
<u>Pig-iron</u>	<u>180 ton</u>	
<u>Steel</u>	<u>30 ton</u>	
<u>Non ferrous</u>	<u>23 ton</u>	

9. Present stocks of finished products:

<u>Description</u>	<u>Quantity</u>	<u>Condition</u>
<u>Attachments of milling machines</u>	<u>16</u>	
<u>Lathes</u>	<u>3</u>	