

Historic, Archive Document

Do not assume content reflects current scientific knowledge, policies, or practices.

60,47

PRICE LIST

LIBRARY
for RECEIVED
★ OCT 20 1932 ★

Fall 1932



Plant This Fall



We are sending this condensed Price List now that our customers may be able to send their orders early. It will be to our mutual interest if you will send your orders now. Note *special low prices on Fruit Trees* of which we have a splendid stock.

THIS LIST CANCELS ALL PREVIOUS QUOTATIONS

NEW HAVEN NURSERIES

(J. Bagby & Sons Co.)

NEW HAVEN

-

MISSOURI

THE WAY WE DO BUSINESS WITH YOU

Terms Cash, unless otherwise agreed upon. **ALL ORDERS TO BE SENT C. O. D. MUST BE ACCOMPANIED BY ONE-FOURTH THE AMOUNT IN CASH.** Remit by Money Order, Cash or Check. When cash is sent be sure to Register the letter.

Order Early It is important that you order early. For the benefit of customers who wish to order early, but do not care to spare all of the money when the order is sent, we will accept early orders **IF 10 PER CENT OF THE AMOUNT** is sent with order, and we will reserve the stock for you. Balance to be sent when you order the stock shipped.

Directions for Ordering Write name and address plainly. Always state distinctly the sizes and grades of stock ordered as per the grades given in this list. When varieties named cannot be furnished, we reserve the right to substitute such varieties as will fill the season as nearly as possible, unless prohibited in the order. If we make mistakes, they are accidental, and we wish to right them.

Prices The prices in this list are for the goods **F. O. B. New Haven, Missouri.**

15% additional must be sent when you wish your stock shipped by parcel post. Any amount not used for prepaying packages will be refunded. If no money is sent for postage, then shipment will go by express **COLLECT.** Owing to postal regulations trees larger than 3 to 4 feet cannot be sent by parcel post. Write for special quotations on larger quantities than indicated in this list.

Packing All goods are packed free. Notwithstanding this fact, we use the utmost care and pack all orders, large or small, according to the distance and our customers' best interests. **Everything is correctly labeled.**

Our Guaranty We use the greatest care possible to have our stock true-to-name, and should any prove not true, we stand ready to replace it free of charge, or to refund the purchase price, but it is mutually agreed between the purchaser and ourselves that we shall not at any time be held responsible for any sum greater than the amount originally paid for said stock. **We guarantee stock to reach customers in good condition.**

All shipments will be accompanied by **Certificate of Inspection of the State Entomologist.** Good stock, true-to-name, sold direct to the planter at reasonable prices is our aim.

We solicit correspondence and personal inspection of our stock, confident that it will compare favorably with the best.

Our Location NEW HAVEN is on the Missouri Pacific railroad and also on the Missouri River, sixty-seven miles west of St. Louis. Our soil is the very best for producing well-ripened stock with splendid roots. Our facilities for prompt shipments are first class.

GET YOUR ORDER FREE!

This price list is our best agent, but we would like to offer you a means of being one of our salesmen by having you get orders for us. And we will pay you, too. Get orders on the "Club Lot" basis. Get up a club among your neighbors, and on club orders amounting to \$10.00 or more, at single, ten, or fifty rates, we allow you 10 per cent additional in stock. We put up each order in a separate package, so that upon receipt of goods you have only to hand out the different lots as ordered. Of course, the more orders you get the more nursery stock we send you **FREE OF CHARGE.** It should be very easy for you to get your own order free in this manner. Try this easy way of saving money.

**Write for Special Prices*

APPLES



Delicious

The Apple is a real money-maker. By planting judicious selections of summer, fall and winter sorts, a constant succession of this most desirable fruit will be obtained. Our stock of apples is exceptionally good this season. All of our apples are grown on Missouri River upland, on well-branched whole roots, smooth, clean, and well-grown in every respect. No better trees can be bought for any price.

PRICES

	Each	10	50	100
Two-year, extra select.....5 to 6 ft.	30c	\$2.75	\$12.50	\$22.00
Two-year, first class.4 to 5 ft.	25c	2.25	10.00	18.00
Two-year or one-year.....3 to 4 ft.	22c	2.00	8.50	15.00
One-year.....2 to 3 ft.	20c	1.75	7.00	12.00

GRIMES GOLDEN—DOUBLE WORKED

	Each	10	50	100
One-year.....3 to 4 ft.	35c	\$3.25	\$15.00	\$27.50
One-year.....2 to 3 ft.	30c	2.75	12.50	22.00

SUMMER APPLES

- Benoni.** Red striped; flesh yellow and tender.
- Carolina Red June.** Red; flesh white.
- Duchess.** Large yellow; streaked with red.
- Early Harvest.** Bright straw color; flesh white.
- Liveland Raspberry.** White striped and marbled crimson. Flesh white; blooms late; bears young.
- Red Astrachan.** Yellow with deep crimson. Last of July.
- Yellow Transparent.** Yellow skin; white flesh. A fine apple.

FALL APPLES

- Grimes Golden.** Medium size; golden-yellow; flesh tender, mild sub-acid. The best fall apple.
- Grimes Golden (Double Worked).** Same as Grimes Golden but budded on stock resistant to collar rot.
- Malden Blush.** Yellow with red blush. Bears large crops.
- Wealthy.** Red skin; white flesh. An early bearer.

on Large Quantities of Stock



WINTER APPLES

- Ben Davis.** Red striped; white flesh.
- Delicious.** Fruit large, nearly covered with red. Fine-grained, crisp and juicy; of fine quality.
- Gano.** Red cheek on yellow ground; flesh white.
- Huntsman Favorite.** Golden-yellow with red cheek.
- Ingram.** Striped bright red; flesh greenish-yellow.
- Jonathan.** Fruit a brilliant glossy red with spicy rich acid flavor. Succeeds everywhere.
- King David.** Dark red; flesh white. Similar to Jonathan.
- Mammoth Black Twig.** Large deep red apple. A fine-growing tree and a good keeper.
- Rome Beauty.** Large yellow, shaded with red.
- Stayman Winesap.** Fruit large deep red. A heavy producer.
- Willow Twig.** Large pale green, blushed with red.
- Winesap.** Fruit a deep red in color, fine flavor and keeps exceedingly well if put in a cool place. It is of medium size and is always in demand.
- Winter Banana.** Large pale yellow; pink blush.
- York Imperial.** Large smooth yellow, shaded red, with indistinct red stripes.

CRAB APPLES

- Hyslop.** Deep crimson. Large. A good keeper.
- Transcendent.** Yellow, striped with red. Fine for cooking.
- Whitney.** Large glossy green, splashed with carmine.
- Yellow Siberian.** Fruit very large, very juicy, and excellent for preserves, jelly or pickles.

WE GUARANTEE SATISFACTION in quality and condition of the goods on ARRIVAL, and our guaranty means that you can get your money back or other stock for unsatisfactory goods reported rejected when received and held for our order.

You Should Plant

An Assortment of These Healthy

True to Name

Peach Trees



Plant the proper peaches and realize good profits from your work. Our peaches are "the proper peaches" to plant because they are stocky, nicely headed with smooth, straight bodies, are well-rooted, and free from all disease. We are headquarters for true-to-name trees and can supply them to you at BARGAIN PRICES.

PRICES

	Each	10	50	100
4½ to 6 feet; extra select. . .	25c	\$2.25	\$10.00	\$18.00
3½ to 5 feet; first class.	22c	2.00	9.00	16.00
2½ to 4 feet, medium.	20c	1.75	7.50	12.00
2 to 3 feet; small.	17c	1.50	5.50	9.00

EARLY

Alexander. White freestone. Early in July.
Carman. White semi-cling. Last of July. Hardy; large. About three weeks earlier than Elberta.
Greensboro. White freestone. Last of June.
Hiley. White freestone. Last of July.
Mayflower. Red semi-cling. Very early; about June 20th.
Red Bird Cling. White clingstone. July.

MID-SEASON

Belle of Georgia. White freestone. August.
Captain Ede. Yellow freestone. August.
Champlon. Creamy-white freestone, with red cheek. Beautiful appearance. Rich and juicy. August 15th.
Crawford's Early. Yellow freestone. Last of July.
Crawford's Late. Yellow freestone. Last of August.
Chinese Cling. White clingstone. August.

are Extra Good



- Early Elberta.** Yellow freestone. August.
Elberta. The very finest yellow freestone in cultivation. An excellent shipper. Ripens the latter part of August.
Elberta Cling. Yellow clingstone. August.
J. H. Hale. Yellow freestone. Ripens a few days later than Elberta, and larger. Productive and a good shipper.
Mamie Ross. White freestone. August.
Miller Cling. White clingstone. August.
Rochester. Yellow freestone. August.
Old Mixon Cling. White cling. Large, white flesh, with deep red cheek; rich and good; one of the best. August.
South Haven. A large yellow freestone. Heavy bearer and very hardy. Early in August.

LATE

- Gold Dust Cling.** Yellow clingstone. September 1st to 10th.
Heath Cling. White clingstone. September 15th.
Henrietta. Yellow clingstone. September 25th.
Indian Blood Cling. Red to the seed. Medium size. September.
Krummel. Yellow freestone. September 10th to 25th.
October Beauty. Yellow clingstone. Last of September.
Ringgold Cling. White clingstone. September. Improved Heath Cling.
Stump. White freestone. September.



DO NOT WAIT TO SEND IN YOUR ORDER. DO IT NOW, and be sure of getting just the varieties and sizes that you want. We will not ship out your order until the proper season for planting at such date as you may desire.

After Making Out Your Order



PLUM

A few plum trees should be included in every home and commercial orchard. They are easy to grow and will thrive and bear well in almost any type of soil.

PRICES

	Each	10	50	100
Extra select 5 to 6 ft.	30c	\$2.75	\$12.50	\$22.00
First class 4 to 5 ft.	25c	2.25	10.00	18.00
Medium 3 to 4 ft.	22c	2.00	8.50	15.00

America. Glossy red. Heavy cropper at an early age. Medium size. Ripens in August.

Abundance. Large purplish-red. Quality the very best. Early in July.

Black Beauty. Large. Very dark purple, almost black when fully ripe. Flesh yellow. Flavor of damson when cooked. Ripens in June.

Burbank. Large clear cherry-red, thin lilac bloom. Flesh yellow. Extra fine quality. Last of July.

German Prune. Skin dark purple; yellow flesh. Very large. August.

Red June. Vermilion-red. Productive. Fair size. Ripens in July.

Shropshire Damson. Similar to Common Damson but larger. Dark purple skin, with yellow flesh. Very productive. September.

Wild Goose. Medium size. Bright red skin; yellow flesh. Abundant cropper. Tree long-lived. Ripens in July.

APRICOT

PRICES

	Each	10	50	100
Extra select 4½ to 6 ft.	30c	\$2.75	\$12.50	\$22.00
First class 3½ to 5 ft.	25c	2.25	10.00	18.00
Medium 2½ to 4 ft.	22c	2.00	8.50	15.00

Moorpark. Large orange color. Red cheek. Firm and juicy. July.

Superb. Ripens early. Fruit medium size; salmon-color. Good quality. Hardy and productive.

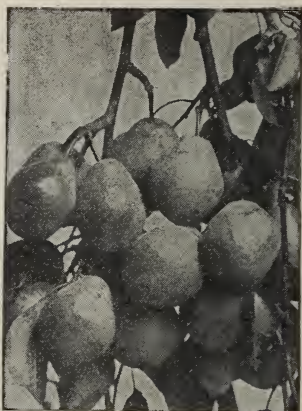
Royal. Yellow with red cheek. Hardy. Abundant bearer. June.

QUINCE

	Each	10
Select. 3 to 4 feet	90c	\$8.00

Champion. Large; oval; firm and of excellent quality. Ripens late and good keeper.

Please Give this List to a Friend



CHERRY

Everyone should have a few cherry trees. The sour cherries do not grow very large and can be planted in almost any back yard. Be sure to select a location, however, that is well drained, as sour cherry trees cannot stand "wet feet." Sweet cherries thrive anywhere, and in addition to their wonderful crops of fruit, make excellent shade trees as they are tall, upright growers.

PRICES

	Each	10	50	100
2-year extra select 4 ½ to 6 ft.	40c	\$3.75	\$17.50	\$32.00
2-year first-class. 3 ½ to 5 ft.	35c	3.25	15.00	28.00
2-year medium. . . . 2 ½ to 4 ft.	30c	2.75	12.50	22.00

Black Tartarian. Black, sweet cherry. Large. Meaty, productive. June.

Belle de Choisy. Large red, semi-sweet. Ripens in clusters. June.

Early Richmond. Bright red, sour cherry. Medium size, Ripens first of June.

Gov. Wood. White, sweet cherry. White skin; pink cheek. Large. Early June.

Magann. Black, sweet cherry. Medium size. Tree long-lived and makes a fine shade tree. June.

Montmorency. Large dark red, sour cherry. Very meaty, juicy, and succeeds everywhere. Middle of June.

PEAR

The pear is a thrifty, upright grower and will bear heavy crops even when planted in sod or heavy clay.

PRICES

	Each	10	50	100
2-year extra select . . . 5 to 7 ft.	40c	\$3.75	\$17.50	\$32.00
2-year first-class. . . . 4 to 5 ft.	35c	3.25	15.00	28.00
1-year Whips. 3 to 4 ft.	30c	2.75	12.50	22.00

Kieffer. Fine large pear; fine flavor and quality. Trees most blight resistant. October.

Garber. Fruit large, bright yellow, with red cheek. Fine for canning. September.

Write for Prices on



GRAPE VINES

Two-year, No. 1.		Each	10	50	100
Concord.	Black.....	15c	\$1.20	\$5.00	\$8.00
Moore's Early.	Black.....	20c	1.75	7.50	12.00
Worden.	Black.....	20c	1.50	6.00	10.00
Catawba.	Red.....	20c	1.50	6.00	10.00
Delaware.	Red.....	20c	1.75	7.50	12.00
Niagara.	White.....	20c	1.50	6.00	10.00

BERRIES & MISC.

	Each	10	50	100
DEWBERRY. Lucretia.....	...	50c	\$2.25	\$4.00
BLACKBERRY. Early Harvest, Snyder.....	...	50c	2.25	4.00
Mercereau.....	...	55c	2.50	4.50
BLACK RASPBERRY. Cumberland, Plum Farmer.....	...	40c	1.50	2.75
RED RASPBERRY. Cuthbert.....	...	45c	1.75	3.00
Latham.....	...	50c	2.25	4.00
GOOSEBERRY. Houghton, Downing.....	15c	\$1.25	5.00
RHUBARB (Victoria).....	8c	70c	3.00

EVERGREENS

	Each
American Arbor Vitae. 2 to 3 feet.....	\$2.00
Chinest Pyramidal Arbor Vitae. 2 to 3 feet.....	2.50
Mugho Pine. 12 to 15 inches.....	2.50

CLIMBING VINES

	Each	10
BOSTON IVY. Two-year, No. 1.....	40c	\$3.50
CLEMATIS PANICULATA. White.....	35c	3.00
CLEMATIS JACKMANII. Purple.....	50c	4.50
HONEYSUCKLE (Hall's Japan). White to yellow.....	35c	3.00
WISTERIA. Two-year, No. 1, purple.....	45c	4.00

Baby Chicks for Fall or Spring

SHADE & ORNAMENTAL TREES



Shade trees are very easily grown as they require very little attention after they are planted. The planting of trees around your home is the best investment you can make. Do it now.

CATALPA BUNGEI (Umbrella Catalpa). 12 to 18 feet. Grafted on a straight stem, it makes an umbrella-shaped top without pruning.

	Each	10
5 to 7 feet.....	60c	\$5.00
4 to 5 feet.....	50c	4.50
3 to 4 feet.....	45c	4.00

CATALPA (Speciosa). 30 to 35 feet. Hardy Catalpa. Excellent for post timber as it is very resistant to rot. Write for special prices on larger quantities.

	Each	10	50	100
8 to 12 feet.....	25c	\$2.25	\$10.00	\$17.50
6 to 8 feet.....	20c	1.75	7.50	13.00

ELM (American). 60 to 100 feet. A native tree of large size. Wide-spreading head and graceful drooping branches. A hardy grower. One of the best park and street trees.

	Each	10
8 to 10 feet.....	80c	\$7.00
6 to 8 feet.....	60c	5.00

ELM (Chinese). 50 to 60 feet. A hardy, rapid grower. Slender branches, compact habit of growth with small attractive leaves.

	Each	10
8 to 10 feet.....	90c	\$8.50
6 to 8 feet.....	80c	7.50

MAPLE (Soft). 60 to 80 feet. A native tree of very rapid growth. Hardy everywhere and easily transplanted.

	Each	10
8 to 12 feet.....	60c	\$5.00
6 to 8 feet.....	50c	4.50
4 to 6 feet.....	45c	4.00

POPLAR (Lombardy). 60 to 80 feet. A tall, rapid grower. Always makes a striking feature in any landscape.

	Each	10
8 to 12 feet.....	50c	\$4.50
5 to 8 feet.....	40c	3.50

PUSSY WILLOW. 10 to 15 feet. Very popular for ornamental purposes, because of the attractive catkins formed on the branches early in the spring.

	Each	10
2 to 3 feet.....	40c	\$3.00

SYCAMORE. 100 to 130 feet. One of the tallest of our native trees. One of the best trees for cities.

	Each	10
5 to 7 feet.....	75c	\$6.50
4 to 6 feet.....	65c	5.50

TULIP TREE. 80 to 100 feet. A tall, robust tree of magnificent appearance.

	Each	10
5 to 7 feet.....	60c	\$5.00
4 to 5 feet.....	50c	4.50

Make Your House a Home

ORNAMENTAL SHRUBBERY

A few shrubs placed about your property will quickly transform your house into a home that you can justly be proud of, and the investment is very small, compared to the pleasure and actual value you secure from them. Regardless of how beautiful and well-kept your house may be, it will not look well if the grounds surrounding it are bare.

	Each	10		
ALTHEA (Rose of Sharon). 2 to 3 feet. Assorted colors.....	35c		\$3.00	
BARBERRY (Japanese). 18 to 24 inches. Green leaf.....	25c		2.00	
BARBERRY (Red Leaf). 18 to 24 inches.....	40c		3.50	
BUTTERFLY BUSH. 2 to 3 feet. Lavender.....	30c		2.50	
DEUTZIA (Pride of Rochester). 2 to 3 feet. White with pink edge.....	35c		3.00	
FORSYTHIA (Golden Bell). 2 to 3 feet. Yellow.....	30c		2.50	
HYDRANGEA (Arborescens Grandiflora). 2 to 3 feet. White.....	35c		3.00	
HYDRANGEA (Paniculata Grandiflora). 2 to 3 feet. Pink.....	35c		3.00	
LILAC. White and purple. 2 to 3 feet.....	50c		4.50	
MOCK ORANGE. White. 2 to 3 feet.....	35c		3.00	
SNOWBERRY. White. 2 to 3 feet.....	35c		3.00	
Red. 2 to 3 feet.....	25c		2.00	
SPIREA. Anthony Waterer. Red. 18 to 24 inches...	40c		3.50	
Van Houtti. 5 to 7 feet. An extremely graceful shrub with long, drooping branches, completely covered with clusters of white flowers in May and June. Makes a beautiful hedge. Perfectly hardy.				
	Each	10	50	100
2 to 3 feet.....	20c	\$1.75	\$8.00	\$14.00
18 to 24 inches.....	16c	1.40	6.00	10.00
SNOWBALL (Common). White. 2 to 3 feet.....	35c		3.00	
WEIGELA. (2 to 3 feet.) Rosea. Pink.....	35c		3.00	
Eva Rathke. Red.....	40c		3.50	



Spirea Van Houtti

HEDGING

Remove those unsightly fences and replace them with some of our fine sure-to-grow Hedge Plants. Use them for fences, dividing your property from your neighbor's (they should gladly help you), as a hedge along the front or to serve as a screen in the back. Hedge plants can be trimmed to any desired height.

PRIVET (California). A vigorous growing variety of fine habit; thick, glossy.

	10	50	100
2-year, 2 to 3 feet, heavy.....	\$.70	\$3.00	\$5.00
2-year, 18 to 24 inches.....	.60	2.50	4.00

PRIVET (Ibodium). A new variety. Similar to California Privet in growth and appearance. Perfectly hardy.

	10	50	100
2-year, 2 to 3 feet, heavy.....	\$.70	\$3.00	\$5.00
2-year, 18 to 24 inches, first-class.	.60	2.50	4.00

SPIREA (Van Houtt). 5 to 6 feet. An extremely graceful shrub with long, drooping branches, completely covered with clusters of white flowers in May and June. Makes a beautiful hedge. Perfectly hardy.

	10	50	100
2-year, 2 to 3 feet.....	\$1.75	\$8.00	\$14.00
2-year, 18 to 24 inches.....	1.40	6.00	10.00

ROSES



HARDY CLIMBERS

40c each; 5 or more, 35c each.

Emily Gray. Yellow. Silver Moon. White.
Paul's Scarlet. Red. Cl. American Beauty. Pink.

Roses—Hybrid Teas

45c each; 5 or more, 40c each.

Pink

Radiance J. J. L. Mock

Yellow

Luxemburg Sunburst
Hugonis, or Golden Rose of China, 75c each.

White

K. A. Victoria White Maman Cochet

Red

Gruss an Teplitz Hoosier Beauty
Red Radiance

We Know We Can Please YOU

DISTANCE FOR PLANTING

Standard Apples.....30 to 35 feet apart each way
 Standard Pears and Strong-Growing Cherries.....20 feet apart each way
 Duke and Morello Cherries.....18 feet apart each way
 Standard Plums and Apricots...18 to 20 feet apart each way
 Peaches.....18 to 20 feet apart each way
 Grapes.....rows 8 to 16 feet apart, 7 to 16 feet in rows
 Currants and Gooseberries.....3 to 4 feet apart
 Raspberries and Blackberries.....3 to 4 by 5 to 7 feet apart

NUMBER OF TREES ON AN ACRE

35 feet apart each way	35	20 feet apart each way.	110
30 feet apart each way	50	18 feet apart each way.	135
25 feet apart each way	70	15 feet apart each way.	205

RULE—Multiply the distance in feet between the rows by the distance the plants are apart in the rows, and the product will be the number of square feet for each plant or hill, which, divided into the number of square feet in an acre (43,560), will give the number of plants or trees to the acre.

Proper planting and cultivation with correct pruning and spraying is the best insurance on an orchard.

SPRAY MATERIALS

Scalecide is truly the complete dormant spray. Applied in the fall it controls scale of all kinds, bud-moth, pear psylla, peach leaf-curl, and fungous cankers. The delayed dormant spray with Scalecide controls scale, aphid, pear thrips, leaf miner, case bearer, leaf roller, European red mite, bud-moth, and fungous cankers. And in addition year-after-year use of Scalecide invigorates the trees. Scalecide is guaranteed to make a better orchard than lime-sulfur.

Scalecide is pleasant to use; it does not injure even the eyes. It is non-poisonous. It saves half the labor of spraying—a tankful of dilute Scalecide goes as far as two tankfuls of dilute lime-sulfur. Scalecide saves the cost of nicotine; saves the cost of spreader; saves more than three-fourths the freight and haulage. A fifteen-gallon drum of Scalecide covers the same trees as a fifty-gallon barrel of lime-sulfur.

PROPORTIONS

For small quantities of spray solution, these figures will help you to get the proper mixture. Be accurate.

MATERIAL

Scalecide—Dilution recommended, 1 gallon to 15 gallons of water. 3 cupfuls (1½ pints), equivalent for 3 gallons of water.

Sulfocide—Dilution recommended, 1 gallon to 200 gallons of water. Four tablespoonfuls (2 ounces), equivalent for 3 gallons of water.

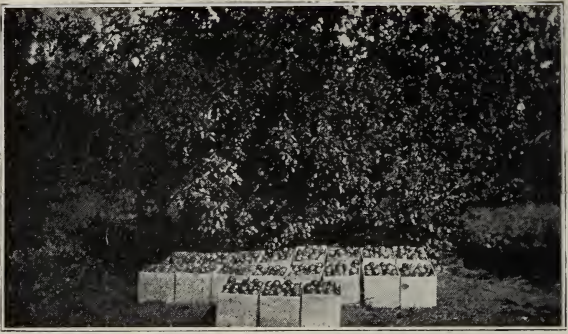
PRICES

Scalecide		Sulfocide	
50-gal. bbl.....	\$28.00	50-gal. bbl.....	\$60.00
30-gal. bbl.....	22.50	30-gal. can.....	39.00
15 gals.....	\$11.50	10-gal. can.....	15.00
Drum re- turnable 2.00	} 13.50	5-gal. can.....	8.75
10-gal. can.....		10.00	1-gal. can.....
5-gal. can.....	6.00	1-qt. can.....	1.00
1-gal. can.....	1.60	1-pt. can.....	.70
1-qt. can.....	.70		

Pints, quarts and gallons shipped by express or parcel post only.

F. O. B. NEW HAVEN, MO.

Send Your Order Now



It Pays to Plant

BAGBY GROWN FRUIT TREES

They Grow and Bear True To Name

When you buy Fruit Trees, you want the best that can be produced. **BAGBY** grown trees have been on the market for 60 years. When you buy them you are getting the best money can purchase, and you know what the crop will be. Our varieties are correct, our grades full, and all culls go on the brush pile. High quality and

ABSOLUTE SATISFACTION GUARANTEED

with a record of 60 years' square dealing to back the guaranty.

Visitors Always Welcomed at Our Nurseries. It will be a pleasure to show you our stock.

New Haven Nurseries

J. BAGBY & SONS COMPANY

New Haven

Missouri

Bagby Trees are Full of Vitality because they are Grown Right. They Bring Results.

