

SHIN-BASHI—STATION

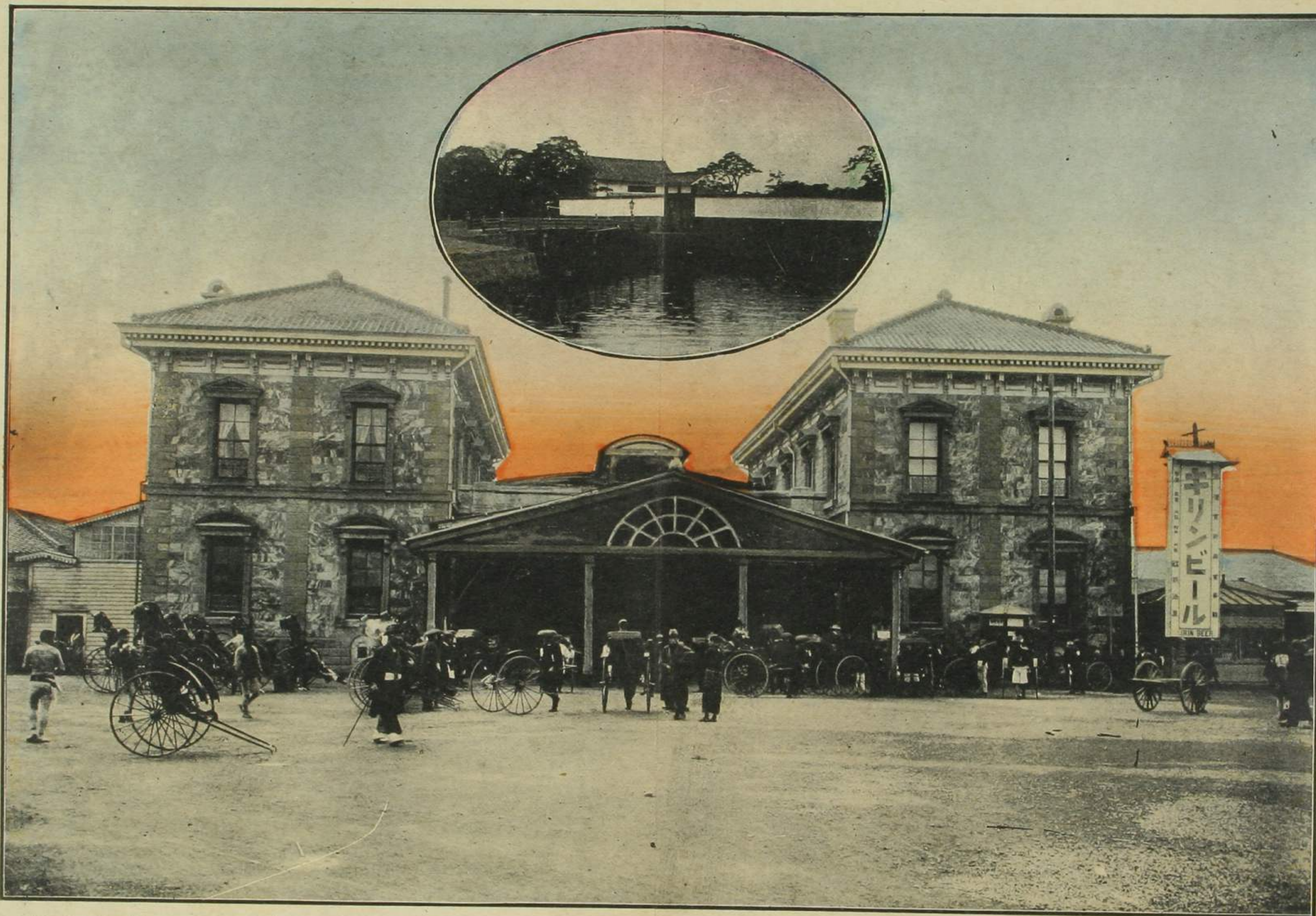
(留沙區芝)

宮離濱 (圖上)

(口芝區芝)

場車停橋新

都市第一の起點たるが故旅客發着の吞吐其雜沓言語に絶せり上圖は幕府の頃御濱御殿と稱し維新後離宮となす御苑品海に臨み遠く房總の帆影を望見し風光頗る快濶を極む



本邦始めて京濱間の鐵道を経營せし時に建設せる停車場にして構造美觀を缺くと雖も

Shimbashi Station, though it is not beautiful, yet as it is a important for departure. There crowds many passengers. Above picture is the palace at Hama where is a fine view,

