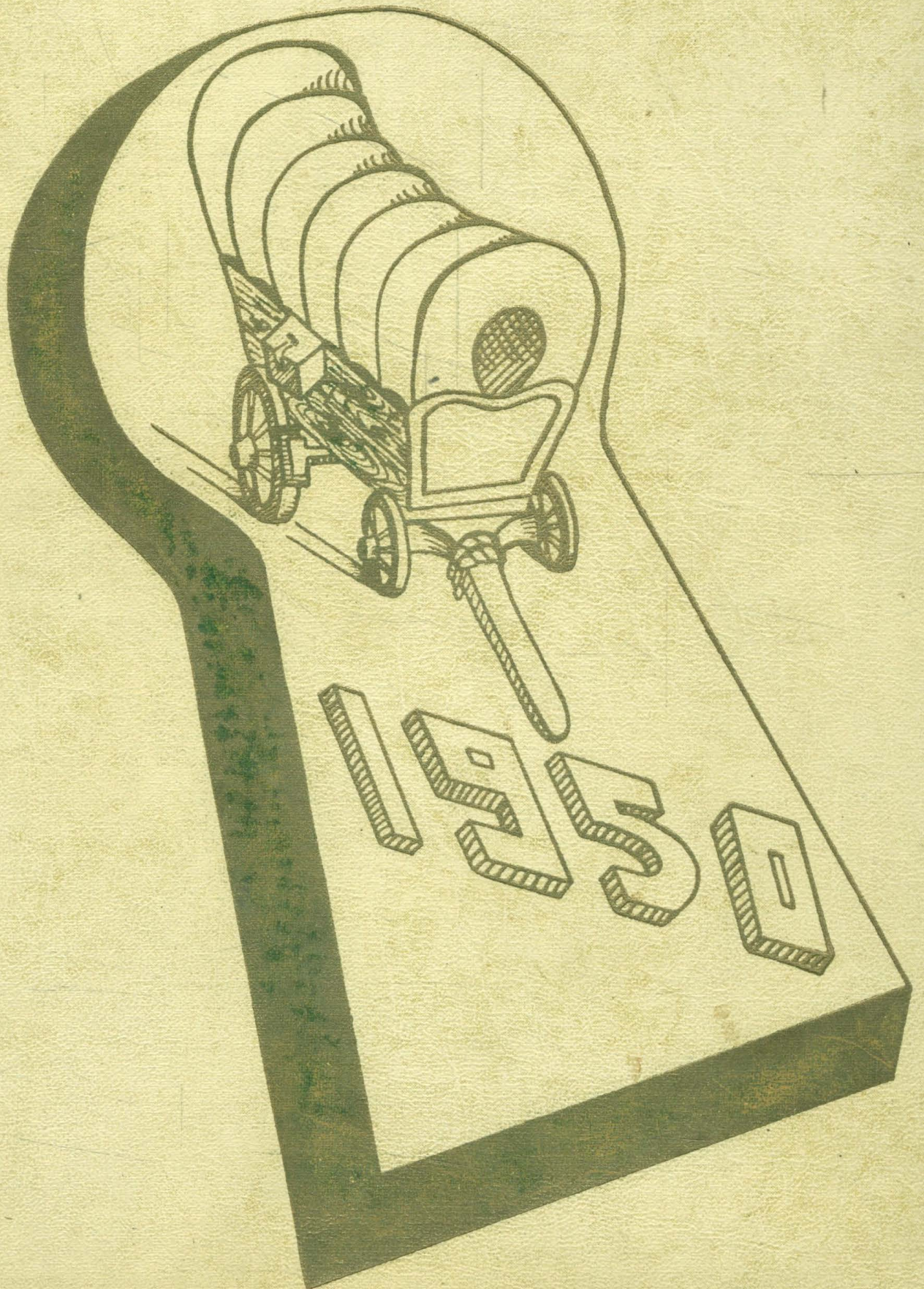
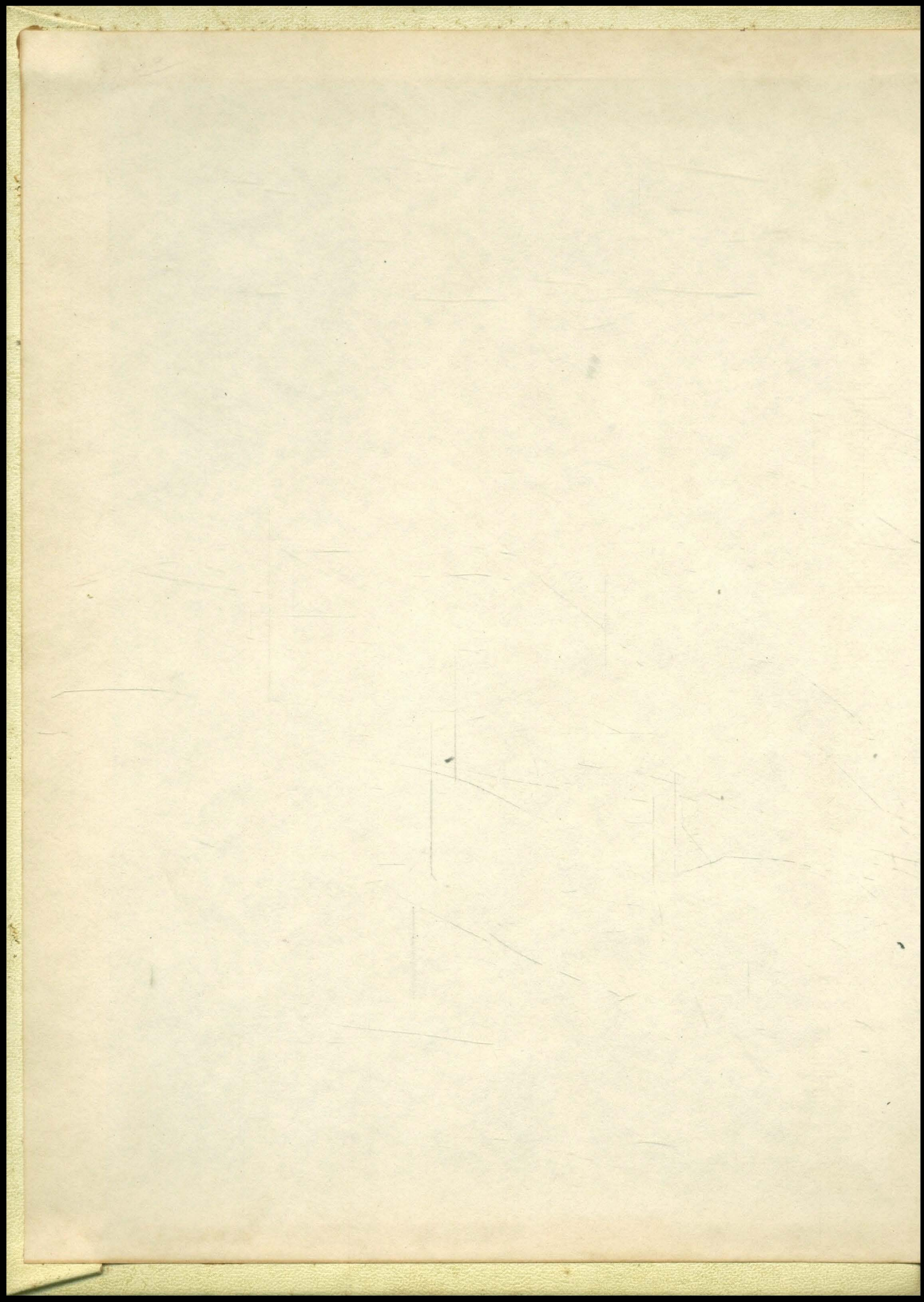
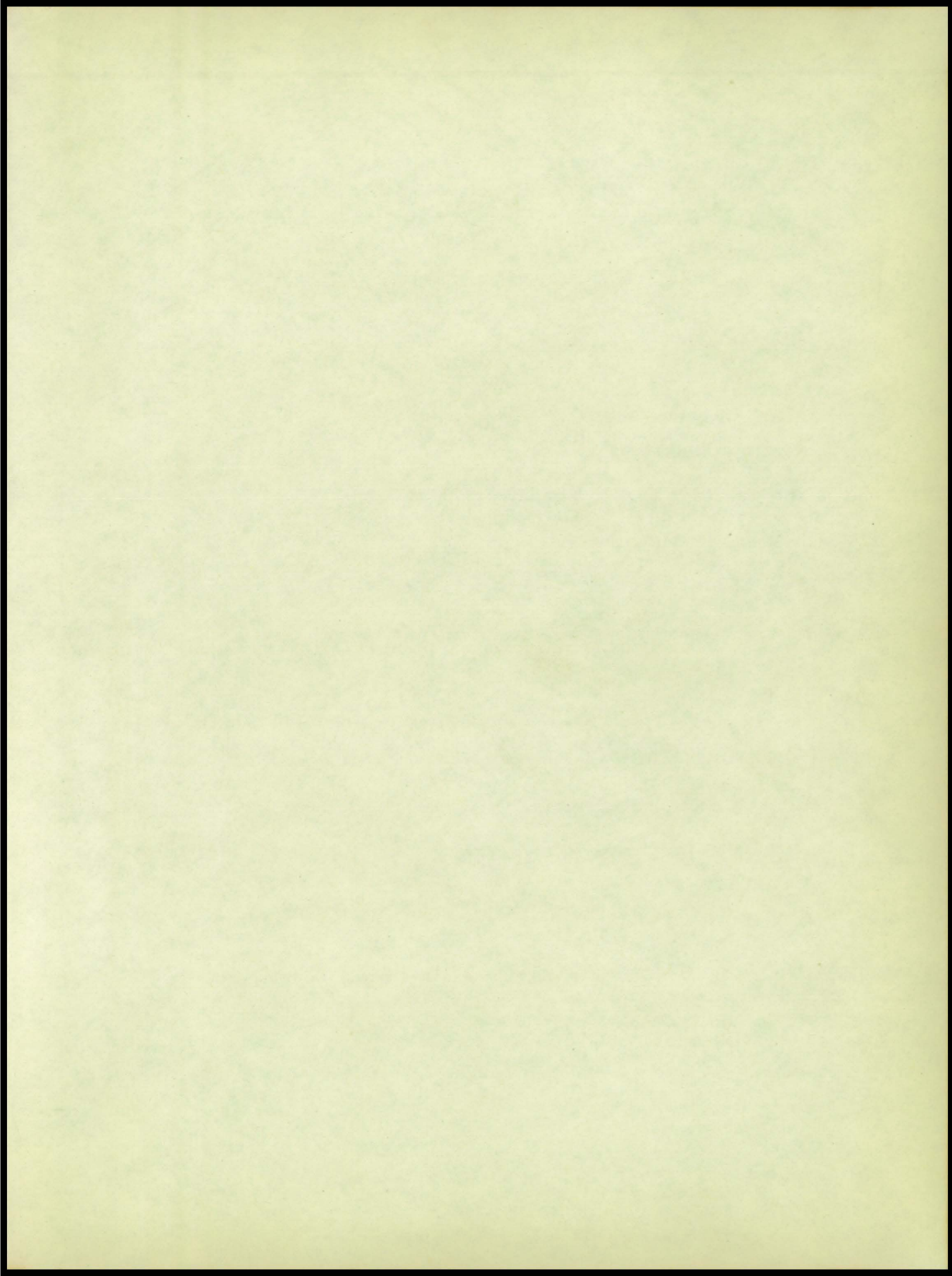
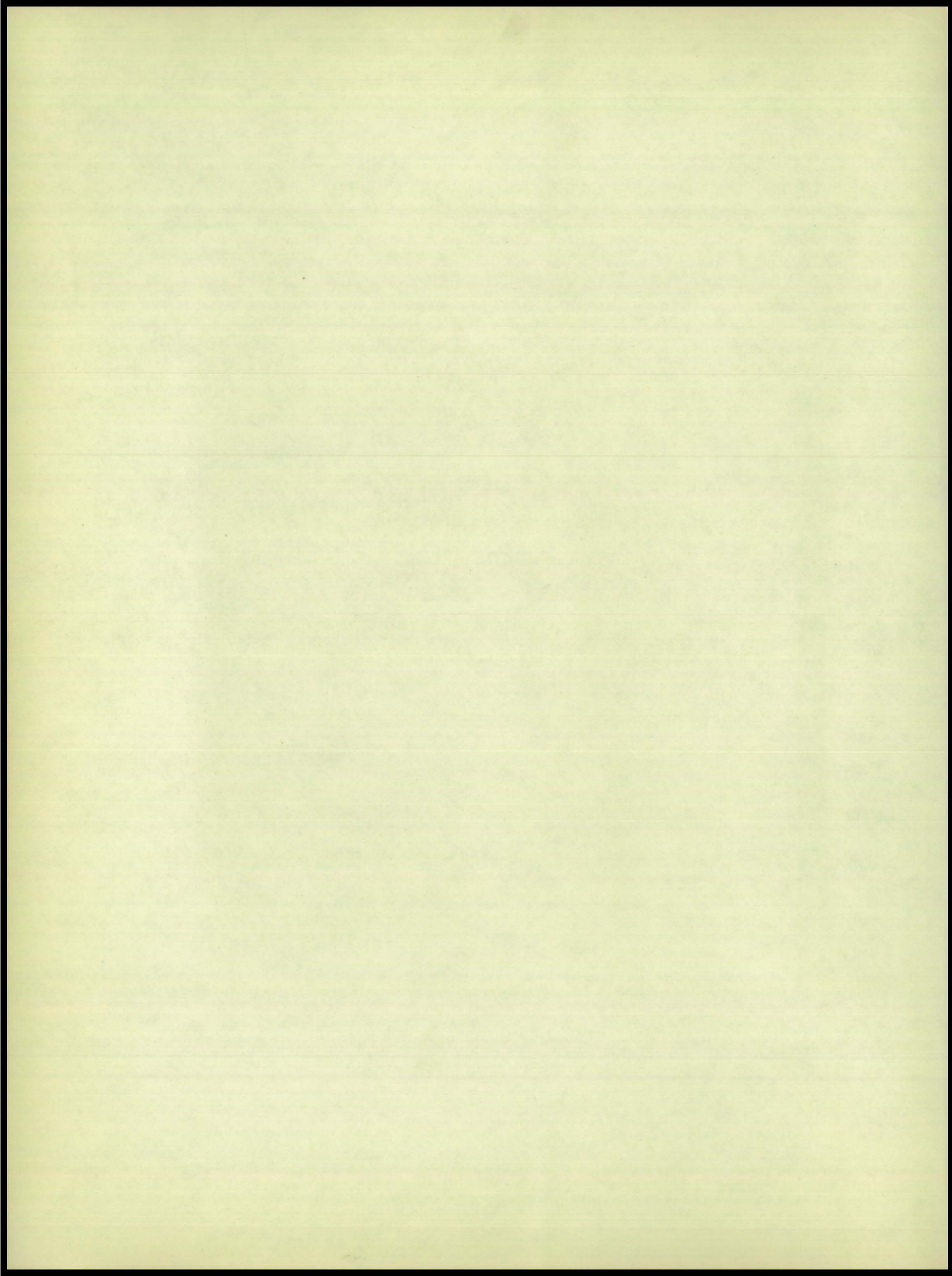


WAGON TRAILS









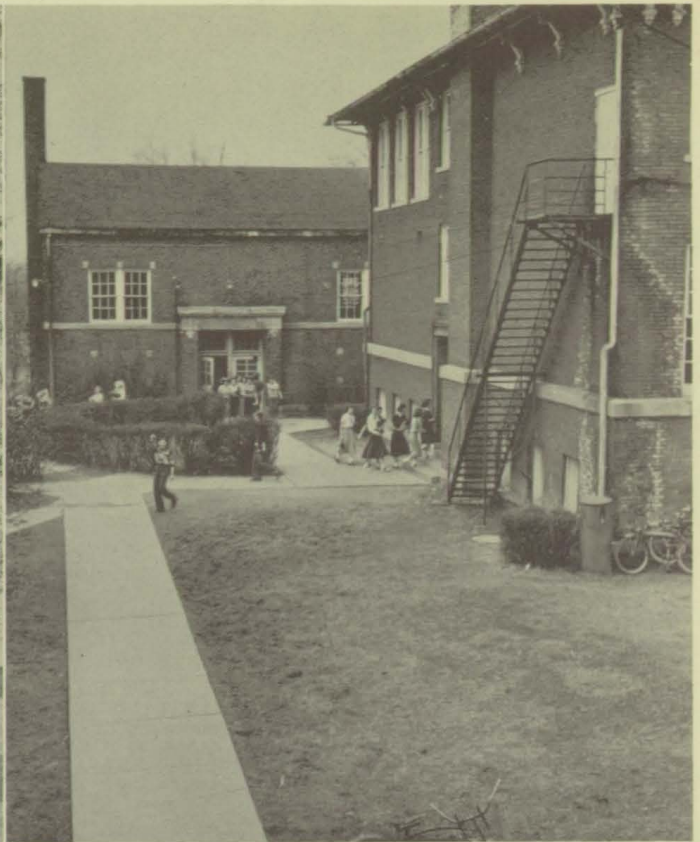
Senior Class
of
MOORESVILLE HIGH SCHOOL
presents
Wagon Trails
of 1950



We invite you to view our High School Year with us.
Looking through the keyholes we see



Oh . Mooresville High, we love your name; to your colors we'll be true.
We'll always try to keep the fame of Dear Old Gold and Blue.



The students on the playground ----- the pathways that we knew, the archway which we enter to grow in wisdom, too.



Oh . Mooresville High, we love your name; to your colors we'll be true.
We'll always strive to keep alive our trust and love for you.

. . . . the Administration
and the
Faculty



School Board



B. F. Jones, Treasurer



Fred R. Glidden, Secretary



Walter Smitherman, President

Student Council



Standing: Harold Weddle, Allen Kinnett, Dugger Sheets, Merle Goldman, Boyd Head
Sitting: Gloria Perry, Sandra Armstrong, Anita Sloan, Tim Johnson, Patsy Spangle, Marcia Emerson



OUR SUPERINTENDENT

Merely to say that we are fortunate in having such a man as Mr. Laughlin as our superintendent is certainly an understatement. For, in the person of Mr. Laughlin, we have all the qualities that could possibly be asked for in a superintendent or a friend.

We feel that having such a leader of our school will surely have a fine effect on the character and future success of all the students.

OUR PRINCIPAL

Mr. Truax, who for many years has been associated with Mooresville High School in the capacity of teacher, this year became our principal. He not only carries out this added responsibility successfully and intelligently, but he also teaches physics, electricity, and industrial arts.

Mr. Truax's fun-loving disposition makes every assignment entertainment and every duty a pleasure. We appreciate his spiritual, moral, and intellectual guidance.



OFFICE GIRL

Mrs. Fields is our very capable and efficient office girl and secretary. She very generously helps us with our problems and cheers our days with her friendly manner.

Faculty



HAROLD BELL, B.S., Hanover College, basketball and baseball coach, teaches social studies and health.



JOHN VAN LIEW, B.S., Illinois University, M.A., Columbia University, our athletic director, teaches physical education and health and safety.

BASIL BOWMAN, B.S. In Ag., Purdue University, teaches vocational agriculture.



LORNA WALKER, B.P.S.M., Indiana University, teaches music to the grade school and directs the high school vocal groups.

JEAN EGGLESTON, B.S., Indiana State Teachers College, is head of our commercial department.



RUTH SPROAT, B.S., Purdue University, teaches home economics.



HELEN GUSE, B.S., Purdue University, teaches biology, chemistry, and civics.



ELIZABETH VAN LIEW, A.B., Millikin University, teaches mathematics.

MIRIAM HASSAN, B.S., A.B., Elizabethtown College, teaches English, biology, and physical education.





BETTY NAY, A.B., Butler University, M.A., Texas Christian University, teaches English.



VIRGINIA RICE, A.B., Butler University, teaches Latin and English.

ROBERT REYNOLDS, B.S., Indiana State Teachers College, is our band director.



FORREST SCHEP-
PER, B.S., Indiana State Teachers Col-
lege, teaches indus-
trial arts, civics, and
U. S. history.

GRADE PRINCIPAL



MR. WARRINER

GRADE SCHOOL FACULTY



BACK ROW (L. to R.): Ned Smith, Dollyne Pollock, Texa Smith, Eva Dell Anderson, Earl Warriner.

FRONT ROW: Cecile Johnson, Dorothy Ragsdale, Mary McKamey, Martha Copeland.



THE COOKS

The old familiar adage, "The shortest way to a student's heart is through his stomach", has been adapted by Mrs. Myrick and Mrs. Harshman who have endeared themselves to us all by their culinary art.



THE FEEDERS

These students are invaluable help during the noon hour in serving the hungry hordes. They are left to right: Alice Pearcy, Joan Keller, Hollis Miller, Loretta Stevens, John Cook, Evelyn Kellum, Carl Keller, Nancy Van Hoy and Carolyn Rice.

THE NURSE

Mrs. Aldrich, a friend to all students of M.H.S. in time of aches and pains, capably administers healing potion.



JANITORS



The patient endurance of the DeHoney brothers, Jim and Denzel enables them to perform the janitorial duties without complaints.

. . . . The Seniors



my step
a none

In August we
had bit on

7:30

SAROLTA ANN BEALL

Band 3, 4
Chorus 4
Library 4
B.O.O.T.S. 2, 3, 4
Paper Staff 2, 3, 4
Latin Club 4
Girl's Glee Club 4
G.A.A. 1
Majors: Home Ec., Science,
English



WILMA BEAN

Chorus 1, 2, 3, 4
Girl's Glee Club 1, 2, 3, 4
B.O.O.T.S. 3, 4
G.A.A. 1
Secretary of Class 4
Latin Club 4
Girl's Vocal Sextette 1, 2, 3, 4
Girl's Trio 3, 4
Junior Class Play 3
Majors: Home Ec., English

BILL COX

Football 2, 3, 4
Baseball 1, 3, 4
Basketball 1, 2, 3, 4
Class play 3, 4
Letterman's Club 3, 4
Annual staff - advertising
editor 4
Majors: English, Math., Sci-
ence, Industrial Arts



MYRLE CRAWFORD

Girl's Vocal Sextette 1, 2, 3, 4
Chorus 1, 2, 3, 4
Girl's Glee Club 1, 2, 3, 4
Paper Staff 1, 2, 3, 4
Junior Class Play 3
G.A.A. 1
Latin Club 4
B.O.O.T.S. 3, 4
Majors: Commerce, Home Ec.,
English

DIANE DEHONEY

Latin Club 1, 2
Sunshine Club 1, 2
Annual staff 4
Martinsville H. S. 1, 2
Majors: English, History,
Commerce



EVELYN DENNY

Band 1, 2, 3, 4
Chorus 4
Girl's Glee Club 4
Paper Staff 2, 3, 4
B.O.O.T.S. 2, 3, 4
Speech Play 4
G.A.A. 1, 2
Majors: English, History, Home
Ec., Commerce

DON DUGGER

Football 3
Basketball 3
Track 1, 4
Baseball 4
Washington High School 1, 2
Majors: English, History



MARCIA EMERSON

Chorus 2, 4
Paper Staff 3
Class Secretary 3
Class Officer (Student Council) 4
Annual Staff 4
Junior Class Play 3
Majors: Commerce, English

MARY JANE FIELDS

Class President 1
Paper Staff 2, 3, 4
Class Play 3
B.O.O.T.S. 2
4-H 2
Majors: History, English,
Home Ec., Commerce



DORIS GIBBS

Glee Club 1
G.A.A. 1
Sec.-Treas. of class 2
Annual staff 4
Majors: History, Home Ec.,
Commerce, English

BETHEL GOLDMAN

Class Play 4
G.A.A. 1, 2, 3, 4
G.A.A. President 3
Annual staff 4
Majors: Commerce, English,
History, Home Ec.



JOANN GUNNELL

G.A.A. 1, 2, 3
Class Play 4
Chours 1, 2
Glee Club 1, 2
Majors: Commerce, Home Ec.,
History, English

JAMES HACKETT

Annual staff 4
Majors: English, Industrial
Arts.



CHARLES HAGEE

Letterman's Club 3, 4
Football 2, 3, 4
Baseball Manager 3
Basketball Manager 3
Annual Photography Editor 4
Paper Staff 3, 4
Class Play 4
Majors: English, Math, Science
Industrial Arts

DOROTHY HARTMAN

Library 3, 4
Chorus 1
Glee Club 1
Majors: English, Home Ec.,
Commerce, History



NORMAN JOHNSON

Track 3, 4
Baseball 2, 3, 4
Basketball 3, 4
Football 3, 4
Football Captain 4
Student Council 4
Letterman's Club 4
Majors: Industrial Arts,
English

ROSALEE JOHNSON

Chorus 1, 2, 3, 4
Glee Club 1, 2, 3, 4
Latin Club 4
Paper staff 3, 4
G.A.A. 1, 4
Student Council 1
Student librarian 4
Majors: Home Ec., English



CARL KELLER

Chorus 1, 4
Football 2, 3, 4
Track 2, 3, 4
Baseball 3, 4
Boy's Glee Club 4
Class President 2
Co-chairman of Jr.-Sr. banquet
Majors: English, Industrial
Arts

JOAN KELLER

Girl's Vocal Sextette 1, 2, 3, 4
Clarinet Quartet 1, 2, 3, 4
Band 1, 2, 3, 4
Chours 2, 3, 4
Paper staff 3, 4
B.O.O.T.S. 3, 4
Class Play 3
Class Secretary 1
Student Council 2
Band Treasurer 4
Annual Staff Treasurer 4
Latin Club 4
Majors: Science, English



EVELYN KELLUM

Girl's Vocal Sextette 1, 2, 3, 4
Chours 1, 2, 3, 4
Girl's Vocal Trio 3, 4
Girl's Glee Club 1, 2, 3, 4
Paper Staff 2, 3, 4
Jr. Class Play 3
Class Historian 2
Sec. of Latin Club 4
Co-Literary Editor of Annual 4
Majors: English, History,
Home Ec.

VANNALEE KINNETT

Paper staff 2, 3, 4
Annual staff 4
Majors: History, English,
Home Ec., Commerce



ROBERT LEWIS

Football manager 2
Annual 4
Majors: English, Industrial
Arts



JACK MACKENZIE

Basketball 1, 2, 3, 4
Football 2, 3, 4
Baseball 1, 2
Track 3, 4
Class President 4
Chairman of play setting 3
Letterman's Club 2, 3, 4
Majors: Industrial Arts,
English



BARBARA MADGE

Annual 4
Majors: History, Home Ec.,
Commerce, English



JEANNE MARINE

"Y" Teens 1, 2
Annual staff 4
Student Council 3
Speech class play 4
G.A.A. 3, 4
Student Librarian 4
Rushville H. S. 1, 2
Majors: English, Commerce,
History, Home Ec.



BARBARA McCOY

Vice-Pres. of G.A.A. 3
G.A.A. 1, 2, 3, 4
B.O.O.T.S. 2
Annual Staff 4
Paper Staff 3
Majors: English, History, Home
Ec., Commerce



HOLLIS E. MILLER

Chorus 1, 2, 3, 4
Football 3
Basketball 1, 3
Baseball 3, 4
Track 2, 3, 4
Boy's Glee Club 4
Manager of Football 4
Majors: English, History



MARY LOU OVERPECK

G.A.A. 1
B.O.O.T.S. 2, 3, 4
Paper staff 4
Girl's Glee Club 4
Chorus 4
Majors: English, History,
Commerce, Home Ec.



ALICE PEARCY

G.A.A. 1, 4
G.A.A. Reporter 4
B.O.O.T.S. 3, 4
Chorus 1, 2, 3, 4
Girl's Vocal Sextette 1, 2, 3, 4
Girl's Vocal Trio 3, 4
Paper Staff 2, 3, 4
Latin Club 4
Student Director of Play 3
Co-chairman of Jr.-Sr. banquet 3
Majors: Home Ec., English



LOIS PERIGO

Spanish Club 2
Glee Club 1, 2, 3, 4
Double Sextette 2
Sunshine Club 1, 2, 3
Band 1, 2, 3
Orchestra 2, 3
Brass Sextette 2
Chorus 4
Boonville High 1, 2, 3
Majors: English, History, Com-
merce



DON PERRY

Basketball 1, 2, 3, 4
Football 4
Baseball 4
Letterman's Club 4
Majors: Industrial Arts,
English



DAVID QUILLEN

Basketball 1, 2, 3, 4
Football 2, 3
Annual staff - Business manager
Class President 3
Letterman's Club 2, 3, 4
Majors: Industrial Arts,
English, Science, Math.

THELMA RENNER

B.O.O.T.S. 2
G.A.A. 1
Class play 3
Majors: Commerce, Home Ec.,
English, History



MARJORIE ROSE

Chorus 1, 2, 3, 4
Glee Club 1, 2, 3, 4
B.O.O.T.S. 2, 3, 4
G.A.A. Treasurer 1
Paper staff 1, 2, 3, 4
Annual staff - co-editor
Band 3
Latin Club 4
Class historian 1
Class treasurer 4
Majors: English, Math., Sci-
ence

JAMES RINGER

Basketball 1, 2
Football 2, 3, 4
Junior Class Play
4-H Judging Team 2, 3, 4
Student Council 1
Majors: Agriculture, English,
Industrial Arts



WAYNE REMSTER

Baseball 2, 4
Majors: English, Agriculture

JOHN SMITH

4-H 3
Annual Staff 4
Majors: Science, History
English



PHYLLIS SMITH

G.A.A. 1, 2, 3, 4
Chorus 2
Glee Club 2
B.O.O.T.S. 2
Paper staff 3, 4
Majors: English, Commerce
Home Ec.

BARBARA STEMBEL

G.A.A. 1, 2
Paper staff 3, 4
B.O.O.T.S. officer 2, 3, 4
Annual staff - co-literary editor
Class Historian 3, 4
Latin Club 4
Majors: English, Home Ec.,
Science



LORETTA STEVENS

Band 1, 2, 4
Chorus 2, 3, 4
B.O.O.T.S. 3, 4
Girl's Glee Club 2, 3, 4
Paper staff 2, 3, 4
Asst. Editor of Paper 4
Band Librarian 1, 2
Band Vice-President 4
G.A.A. 1
Majors: Commerce, English

LOWELL SWINNEY

Student Council 2, 3
 Basketball 1, 2, 3, 4
 Vice President 4
 F.F.A. 2,3
 4-H 3, 4
 Livestock Judging Team 2, 3, 4
 Co-chairman of Prom 3
 Class Play 4
 Majors: English, Agriculture,
 Industrial Arts



ANN TAYLOR

Band 1, 2, 3, 4
 Chorus 3, 4
 Girl's Vocal Sextette 1, 2, 3, 4
 Clarinet Quartet 1, 2, 3, 4
 Girl's Glee Club 3, 4
 Latin Club 4
 Paper staff 2, 3, 4
 4-H Club 1, 2, 3
 B.O.O.T.S. 3, 4
 Majors: History, English

PHILIP TRUAX

Basketball 1, 2, 3
 Track 1, 2, 3, 4
 Football 2, 3, 4
 Co-chairman of Prom 3
 Sec.-Treas. Lettermen's Club
 2, 3, 4
 Annual staff - Co-editor
 Majors: Math., Science, English



JERRY VAN HORN

Football 1
 Shortridge 1
 Center Grove 2
 Majors: English, Commerce
 Shop

VIRGINIA WARTHEN

G.A.A 1
 Annual staff 4
 Majors: Home Ec., English,
 History, Commerce



PATTY YARGER

Chorus 4
 Glee Club 4
 Band 1, 2, 3, 4
 Paper staff 1, 2, 3, 4
 G.A.A. 1
 Latin Club 4
 B.O.O.T.S. 3, 4
 Class Play 4
 Majors: English, Home Ec.

Front Row: J. Smith, Shaffner, Hackett,
 Remster, Hagee, Perry, Van
 Horn.
 Second Row: Percy, Kellum, J. Keller,
 Yarger, Taylor, Stevens, Rose,
 Bean, Dehoney, Miss Nay.
 Third Row: Fields, R. Johnson, Marine,
 Madge, Emerson, P. Smith,
 McCoy, Gibbs, Denny, Craw-
 ford, Miss Guse.
 Fourth Row: Cox, Warthen, Gunnell, Goldman,
 Perigo, Overpeck, Stembel,
 Kershaw, Kinnett, Hartman,
 Truax.
 Top Row: Lewis, N. Johnson, Quillen,
 Mackenzie, Miller, C. Keller,
 Swinney.



CLASS HISTORY

As wide-eyed, green "froshies" we, the Senior Class of 1950, entered the portals of M. H. S. early in the fall of 1946, seventy-eight strong. According to time honored custom we were duly initiated. We wore our clothes wrong side out, learned a speech crammed full of hard words, and in various other ways showed our respect for the seniors. As a reciprocal of our initiation party we gave a barn dance for the school. Our class officers were: President, Mary Jane Fields; Vice-president, Duane Blasche; Sec.-Treasurer, Joan Keller; Class Historian, Marjorie Rose; and Student Council members Rosalee Johnson and James Ringer. Capably advising us were faculty members Miss Betty Nay and Mrs. Helen Harvey.

On September 13, 1947, we, as Sophomores, elected the following people to lead us: Carl Keller, President; Donald Perry, Vice-president; Doris Gibbs, Secretary-Treasurer; Evelyn Kellum, Historian; and Joan Keller and Lowell Swinney, Student Council representatives. Our faculty advisors that year were Miss Mary McCleary and Mr. John Van Liew. During this year we sponsored a "Jive Town Party" for the high school.

As Juniors we presented our class play "We Shook the Family Tree" by Hildegard Dolson. We earned money by selling refreshments during noon hours and at football and basketball games. Leading our class were: David Quillen, President; Norman Johnson, Vice-president; Marcia Emerson, Sec.-Treasurer; Barbara Stembel, Historian; Jeanne Marine and Lowell Swinney, Student Council members; and Miss LaVerne Ostermyer and Mr. Wallace Potter, Sponsors. At the end of the year we entertained the Senior Class with a banquet and prom. We decorated the banquet in maroon and gray, the colors of the Senior Class. The motif of the prom, "Friday the Thirteenth," was carried out by using horseshoes to represent good luck.

The most eventful year of our school career was, of course, our last. That year weighty problems rested upon our shoulders. It was our duty not only to live up to our glorified position as seniors, but also to initiate the freshmen, to sponsor dances after games as a money making undertaking, to present a class play, and, above all, to make plans for graduation. At the beginning of the year we elected the following people to lead us; Jack Mackenzie, President; Lowell Swinney, Vice-president; Marjorie Rose, Treasurer; Wilma Bean, Secretary; Barbara Stembel, Historian; and Marcia Emerson and Norman Johnson, Student Council members. Our class sponsors were Miss Helen Guse and Miss Betty Nay. During the year we chose our class colors, blue and white; our flower, the yellow rose; and our motto, "We have crossed the bay and are now headed out to sea."

Years have passed





JUNIORS



Front Row: Charles Gregory, Beldon Wade, Darrell Sheets, Ronnie Trester, Elwood Wilcher, Mackie Pygman, Allen Monical, Charles Shrake, Bruce Smitherman, Larue Brewer.

Second Row: Dwayne Copeland, Mary Alice Parks, Connie Laudig, Ruth Long, Dorothy Belle Riggs, Peggy Beasley, Pat Lugar, Jo Simms, Phyllis Park.

Third Row: Kenneth Park, Jacob DeGroot, Charles McKamey, Margaret Plummer, Beverly Gregory, Mary Lou Carlisle, Imogene Forrester, Elsie King, Bonnie Twa, Lillie Gentry.

Fourth Row: Jimmie Sloan, George Boyer, Bill Shipley, Carolyn Rice, Hazel Hamilton, Marilyn Jo McDaniel, Norman Blunk, Joyce Francis, John Cook, Rhea Brown, Mrs. Van Liew, Sponsor.

Fifth Row: Robert Dyer, Jack Wrightsman, Bob Bowman, Francis Whilhide.

Sixth Row: Mr. Reynolds, Sponsor, Kent Rooker, Loren Spoon, Kenneth Wright, Deward King, Don Moore, Charles Schroughams, Walter Welch, Charles Meade, Bill Fields, Jesse Horton.

CLASS OFFICERS

Front Row (L to R): Marilyn Jo McDaniel, Student Council; Mary Lou Carlisle, Treasurer; Connie Laudig, Secretary; Mary Alice Parks, Historian. **Back Row:** Beldon Wade, Vice-president; Darrell Sheets, Student Council; Elwood Wilcher, President.



SOPHOMORES



Front Row: Mr. Bowman, Sponsor, P. Scott, I. Scott, C. Sawyers, L. Soots, M. Bush, L. Johnson, C. Tapscott, D. Stanley, P. Henderson, Miss Sproat, Sponsor. **Second Row:** P. Rairdon, P. Terrell, J. Sawyers, V. Mann, M. Whitlow, D. Earles, W. Farmer, P. Chase, S. Armstrong, B. Capito, R. Allen, B. Story. **Third Row:** S. A. Hughes, C. Bean, M. Vinson, N. Van Hoy, K. Bennett, S. Laudig, L. Rhodes, B. Keltner, L. Allen, P. Lunsford, K. Comer. **Fourth Row:** R. Olleman, J. Wise, S. Settle, H. Elkins, M. Spoon, B. Dobbins, D. Bingham, R. Beck, E. Magenheimer, J. Goff. **Fifth Row:** J. Mincy, C. Sheets, D. Swinney, J. Allman, B. Williams, M. Goldman, A. Modlin, R. Allen, E. McCammack. **Sixth Row:** D. Allen, C. Bailey, E. Gregory, H. Bush, C. Johnson, R. Lee, L. Shupe, C. Warthen, M. Gentry. **Seventh Row:** A. Harrison, D. Willhide, D. Pearson, B. Perry, C. Snyder, C. Earles, N. Patrum, J. Zigler, E. Hilt.

CLASS OFFICERS

Seated (L to R): Donald Swinney, President; Kay Bennett, Historian; Merle Goodman, Student Council; Sandra Armstrong, Student Council; Jack Wise, Vice-president. **Standing:** Bob Dobbins, Secretary. **Deceased:** Barney Perry, Treas.





FRESHMEN



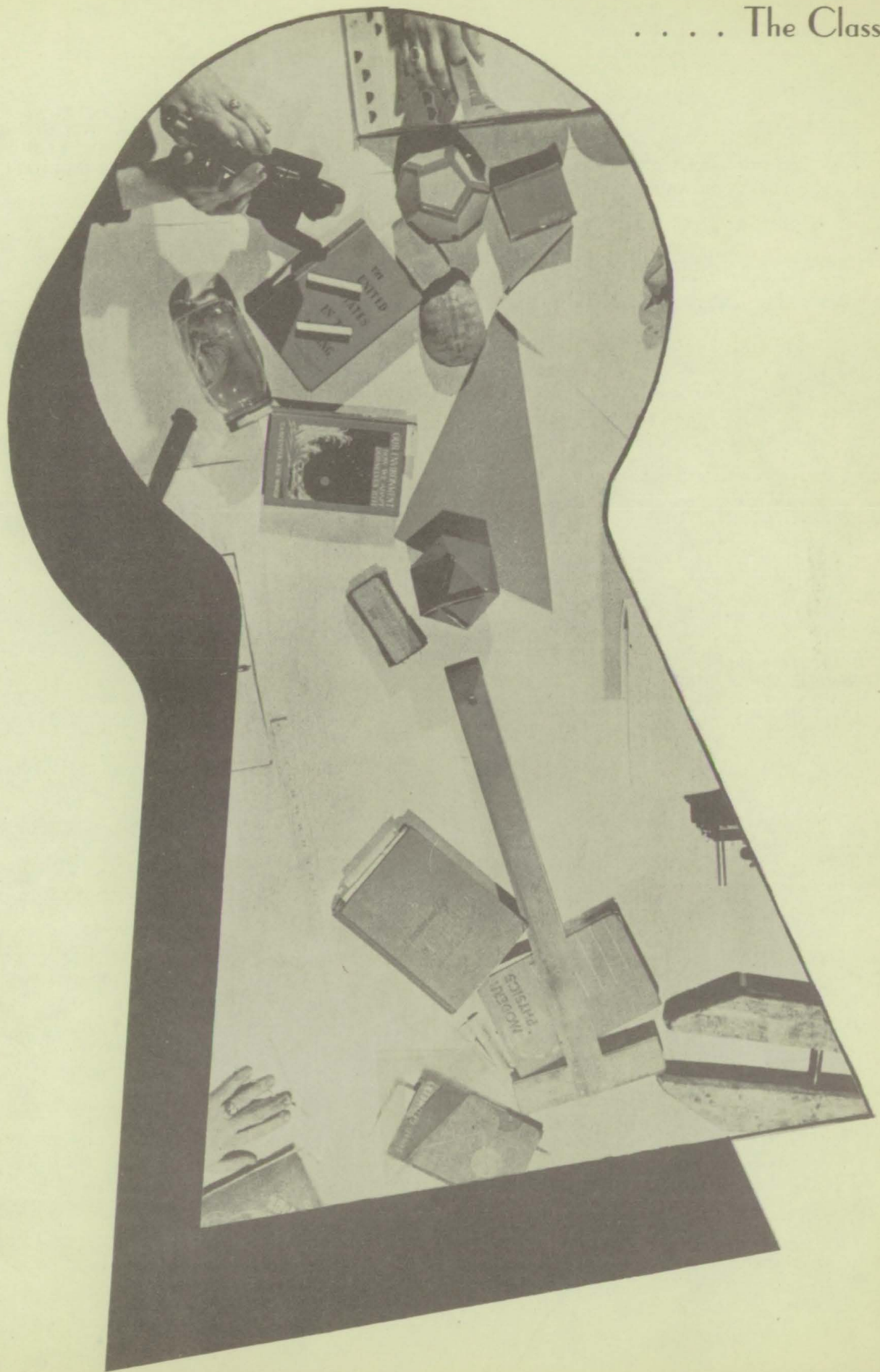
Front Row: Mr. Schepper, Sponsor, J. Ragsdale, K. Jensen, B. Welch, M. Hensley, N. Rusie, C. Poe, R. Clark, L. Robinson, K. Baker, M. Lewis, V. Wilcher, H. Giffen, Mrs. Hassen, Sponsor. **Second Row:** K. D. Haught, G. Antrim, B. Nevins, B. Nowlin, M. Swinney, S. Spangle, S. Perigo, M. Rusie, V. Boltinghouse, P. Neal, I. McClure, W. Wrightsman, B. Wood. **Third Row:** J. Pease, D. Renner, F. Painter, B. McHaffie, M. Lugar, J. Kays, C. Clark, T. Rigdon, B. Smith, J. Markham, E. Davenport, J. Pease, R. Mincy. **Fourth Row:** C. Mann, R. Arvin, J. Hadley, L. Bocock, D. Byers, G. Perry, B. Cottingham, D. Wise, B. Van Horn, N. Smith, R. Dyer, R. Delap, J. Martin, R. Kinnett. **Fifth Row:** B. Koehnlein, B. Smith, J. Cox, D. Wright, R. Hagee, H. Weddle, R. Parks, P. Sawyer, C. Poe, M. Rairdon, A. King, T. Huff, J. Rooker, N. Hughes, D. Whitaker. **Sixth Row:** D. Olleman, C. Bain, B. Beasley, G. Lockhart, D. Bruin, J. Turley, N. Ferguson, C. Gentry, D. Cunningham, F. Neitzel, H. Cordray, B. Turley, H. Holdcroft, J. Hart.

CLASS OFFICERS

Seated: Gloria Perry, Student Council. **Standing:** Harold Weddle, Student Council; Jim Hadley, Vice-president; Marvin Swinney, President; Don Wright Secretary.



. . . . The Classes



Languages

Three years of English is required for graduation. An additional year of English and two years of Latin may be elected by those who desire further work in this field. Students pursuing these courses are pictured below.



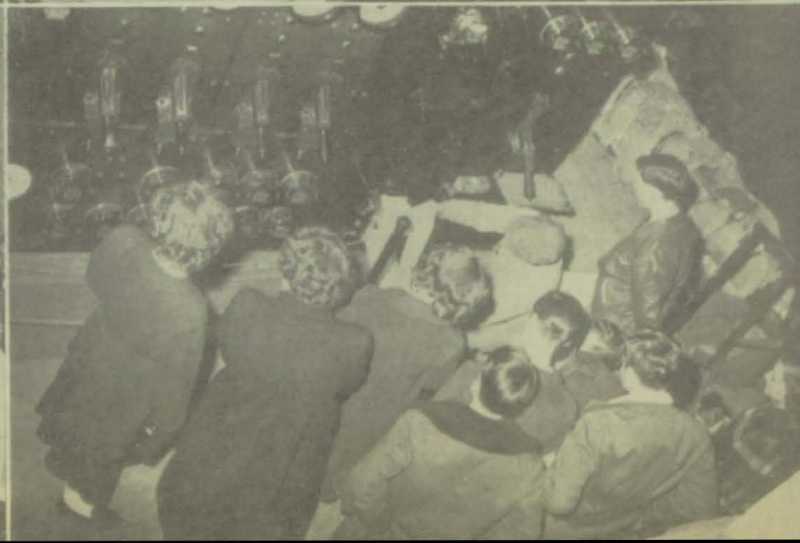
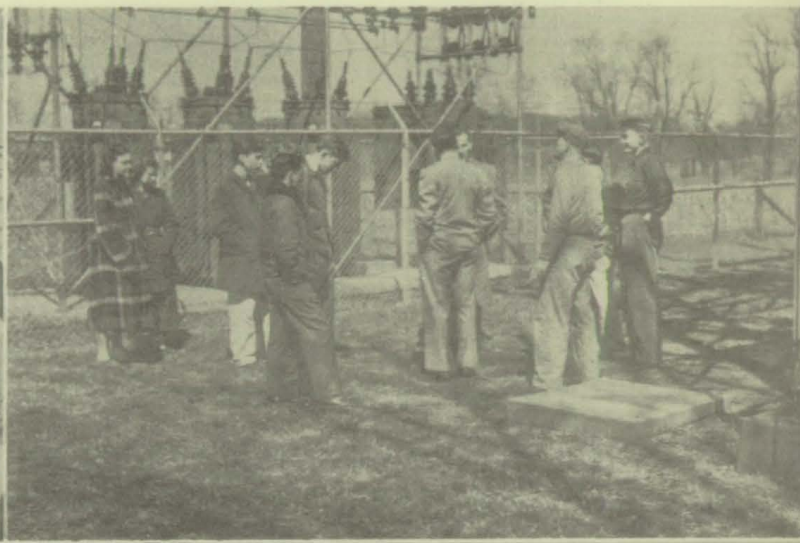
. . . . Mathematics

One year of mathematics, either algebra or general mathematics, is required for graduation. Plane and solid geometry and advanced algebra are electives and may be taken after the freshman year. This year several students. Mary Anne Lugar, Irene McClure, and Audrey Modlin, who are pictured below, entered the State contests in algebra and geometry and represented our school very well.



Science

One year of science, biology, is required; it is usually taken during the freshman year. Chemistry and physics may be taken later in the high school career. The classes in session are pictured below as well as the physics class on tour at the Mooresville Public Service Company.



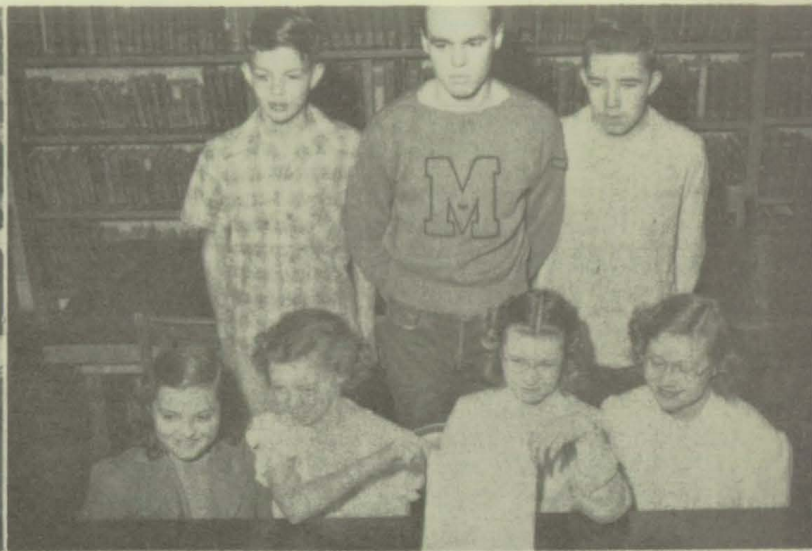
. . . . Commerce

Included in the commercial course are one and one-half years of typing, two years of shorthand, general business, and bookkeeping. This year Loretta Stevens and Marjorie Rose entered the first annual commercial contest at the Indiana Central College. Each girl placed third in her division. They are shown below receiving their awards. Also shown are pictures of the classes at work.



Social Studies

Two compulsory courses, United States history and civics, and an elective, world history, are offered to students. Shown below are two classes of civics, seniors who study one semester of government and one semester of sociology; a world history class; and two United States history classes. Also shown are the students who won recognition in the Bill of Rights essay contest sponsored by the American Legion Auxiliary.



. . . . Agriculture

Vocational agriculture is offered to all four grades in high school to train the boys to be future farmers. Much practical experience is gained through field trips to near by farms where they observe plant and animal life. Commendable work has been achieved by the various judging teams this year.



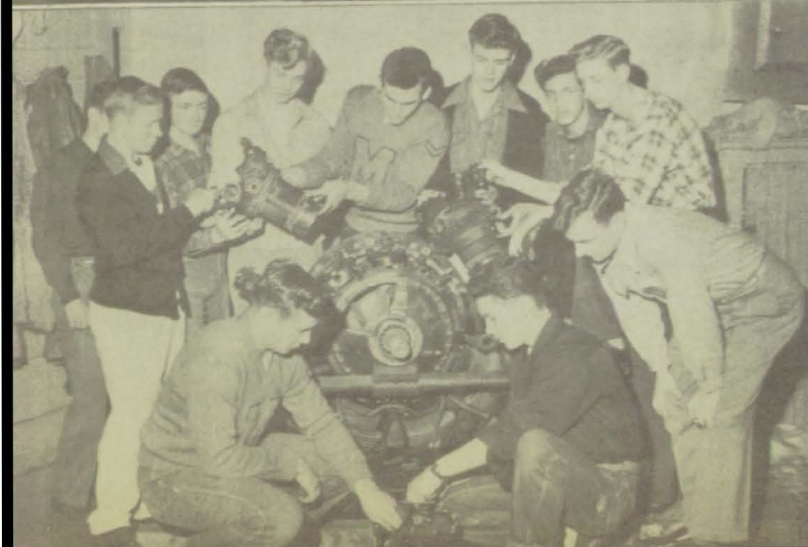
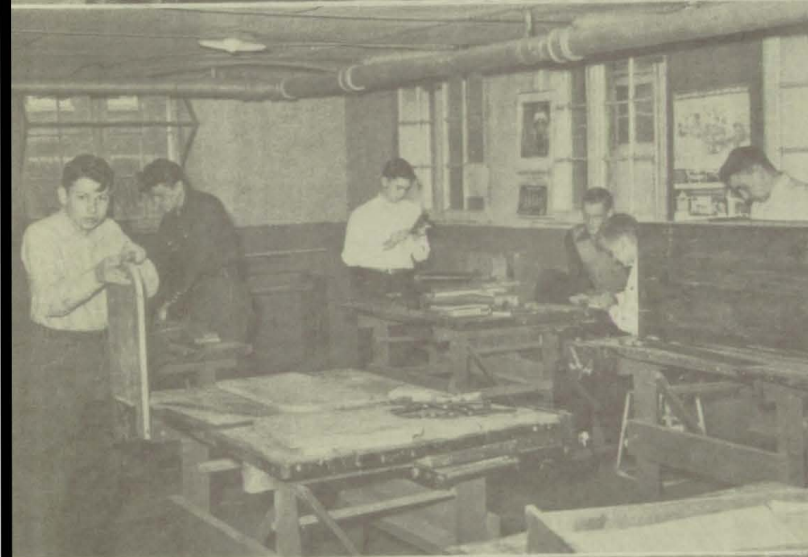
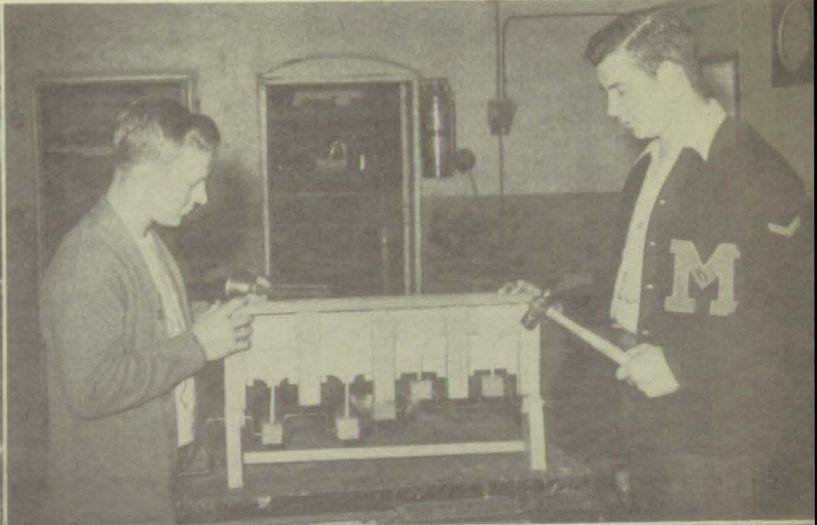
Home Economics

Three courses are offered to girls of M.H.S. to train them for their future roles of housewives and mothers. The first year, consisting of sewing, color harmony, and foods, is compulsory, as is the study of hygiene in the first semester of the second year. In the second semester of the second year and during the third year, foods, housing, and advanced clothing may be studied. Two classes of elementary home economics and one of each of the others are shown below.



. . . Industrial Arts

Offered to boys of M.H.S. are wood-working, mechanical drawing, and physics course, consisting of electricity and auto-mechanics. These courses are all elective. Pictures of the boys at work are shown below.



Physical Education

One year of physical education is required of every freshman. In the sophomore year the course is supplemented with a course in health for boys and either health or home nursing for the girls.





FRONT ROW: R. Hagee, J. Mincy. SECOND ROW: S. Settle, P. Truax, D. Perry, B. Cox, C. Keller, Bob Allen, A. Modlin, Rich Allen. THIRD ROW: Mr. Smith, Ass't Coach, D. Wright, C. Hagee, J. Mackenzie, J. Ringer, M. Spoon, D. Sheets, N. Johnson, K. Wright, H. Shaffner, Mr. Van Liew, Coach. FOURTH ROW: Mr. Bell, Ass't Coach, C. Gregory, J. Cox, E. Davenport, H. Elkins, D. Copeland, B. Dobbins, C. Balley, J. Wise, E. Lockhart, J. Zigler, C. Bain, N. Smith.



KELLER



SHAFFNER



PERRY



COX



MACKENZIE



SHEETS



RINGER



SPOON

FOOTBALL SCORES

		MHS	OPP
Sept. 9	Crawfordsville.....	7	19
Sept. 16	Decatur Central.....	6	0
Sept. 23	Danville.....	12	20
Sept. 30	Greenfield.....	13	0
Oct. 7	Greenwood.....	28	13
Oct. 14	Brownsburg.....	6	0
Oct. 21	Plainfield.....	31	12
Oct. 26	Lawrence Central.....	0	31



ALLEN



TRUAX



HAGEE



JOHNSON



WRIGHT



MILLER, Mgr.

Varsity Basketball Team



Scott



Mackenzie



Quillen



Settle



Perry



Swinney



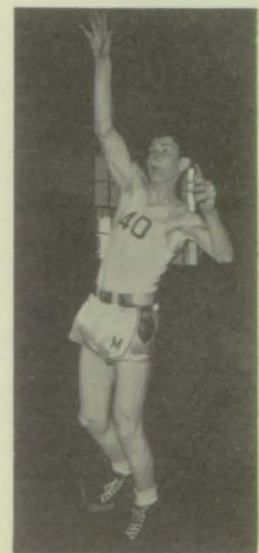
Wrightsman



Johnson



Wright



Cox

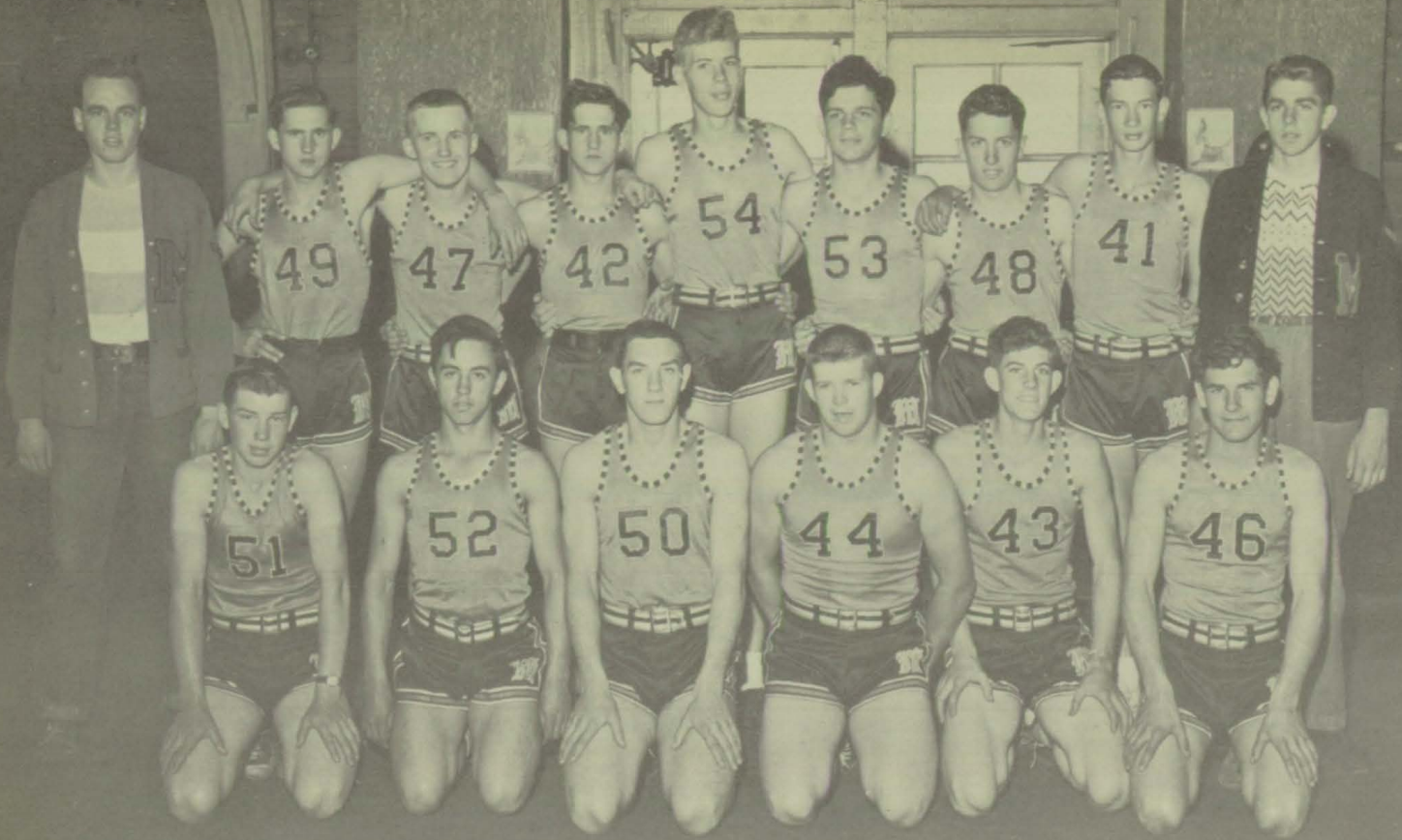


CENTER: Mr. Harold Bell, Coach
 LEFT: Darrell Sheets, Mgr.
 RIGHT: Richard Olleman, Mgr.



VARSITY SCORES

		MHS	OPP
Nov. 18	Martinsville.....	41	52
Nov. 22	Center Grove.....	51	40
Nov. 30	Monrovia.....	42	44
Dec. 2	Brownsburg.....	46	32
Dec. 9	Speedway.....	36	48
Dec. 16	Ellettsville.....	50	60
Dec. 23	Spencer.....	48	42
Dec. 31	Invitational Tourney at Plainfield		
	Speedway.....	29	32
	Monrovia.....	62	38
Jan. 4	Decatur Central.....	51	38
Jan. 6	Danville.....	71	42
Jan. 14	Zionsville.....	48	53
Jan. 20	University.....	46	36
Jan. 21	Manual.....	40	48
Jan. 27	Greenwood.....	60	57
Feb. 1	Clayton.....	61	50
Feb. 3	Plainfield.....	51	48
Feb. 7	Charlton.....	70	58
Feb. 15	Monrovia.....	52	46
Feb. 17	Avon.....	60	33
Sectional Tourney			
	Eminence	78	44
	Smithville	57	58



FRONT ROW (L to R): M. Goldman, A. Modlin, R. Dobbins, D. Copeland, B. Bowman, D. Swinney, BACK ROW: D. Sheets, Mgr., Rich Allen, C. Gregory, Robert Allen, K. Wright, M. Spoon, D. Capito, C. Gentry, R. Olleman, Mgr.

B Team

B- TEAM SCORES

	MHS	OPP
Martinsville.....	19	32
Center Grove.....	18	29
Monrovia.....	34	19
Brownsburg.....	31	15
Speedway.....	24	26
Ellettsville.....	18	35
Spencer.....	28	15
Decatur Central.....	29	37
Danville.....	28	26
Zionsville.....	35	34
University.....	27	39
Manual.....	22	16
Greenwood.....	59	43
Clayton.....	37	23
Plainfield.....	34	24
Charlton.....	25	26
Monrovia...	40	29
Avon.....	41	19



FRONT ROW (L to R): J. Hadley, C. Bain, R. Whitaker, D. Almond, B. Beasley. BACK ROW: R. Hagee, Mgr., F. Painter, R. Dyer, J. Ragsdale, E. Lockhart, E. Davenport, D. Wright, Mr. Van Liew, Coach.

Freshman Team

Junior High Team

CENTER: R. Keltner, Mgr. FRONT ROW (L to R): Mr. Smith, Coach, R. Plummer, G. Record, T. Rose, J. Bain, B. Head, H. Hamilton, SECOND ROW: B. Rhodes, J. Hensley, D. Greeson, R. Baldwin, M. Mackenzie, H. Rooker.





FRONT ROW: Robert Story, Charles Gregory, Dwayne Copeland, Audrey Modlin, Bill Cox, Carl Keller. SECOND ROW: Charles Hagee, Manager, Hollis Miller, Jack Wrightsman, Norman Johnson, Darrell Sheets, Mr. Van Liew, Coach.

Baseball

SCORES 1949

	MHS	OPP
Lawrence Central.....	2	13
Decatur Central.....	1	7
Danville.....	4	17
Plainfield.....	0	13
Brownsburg.....	7	14
Greenwood.....	1	8

ROSTER

Pitchers.....	Forrester, Johnson
Catcher.....	Gregory
First Base.....	Bowman
Second Base.....	Modlin
Third Base.....	Cox
Short Stop.....	Keller
Left Field.....	Wrightsmen
Right Field.....	Miller



FRONT ROW: Hollis Miller, Robert Dyer, Jack Wrightsman, Richard Allen, Audrey Modlin. SECOND ROW: Phillip Truax, Jack Mackenzie, Norman Johnson, Carl Keller, Don Stanley, Kenneth Wright, Mr. Potter, Coach.

Track

SCORES 1949

Mooresville.....	63
Speedway.....	46

Triangular Meet	
Decatur Central.....	56
Mooresville.....	64
Plainfield.....	17

Linton Relays	
Mooresville.....	10

Triangular Meet	
Martinsville.....	90
Mooresville.....	34
Franklin.....	32

Mooresville.....	55
Danville.....	54

Sectionals	
Mooresville.....	2

Mid-State Conference	
Mooresville.....	11

ROSTER

100.....	Truax, Keller, Allen
120.....	Truax, Keller, Allen
440.....	Miller, Spoon
880.....	Wrightsmen, Dyer
Mile.....	Wrightsmen, Hagee
High Jump.....	Truax, Mackenzie
Pole Vault.....	Wright
Broad Jump.....	Miller, Stanley
Shot Put.....	Johnson
880 Relay.....	Miller, Allen, Keller, Truax
Mile Relay.....	Dyer, Spoon, Wrightsmen, Stanley
Fr. 880 Relay.....	Bob Allen, Rich Allen, Settle, Modlin



. . . . Activities



Band



Band

SEATED, FIRST ROW (L to R): Taylor, Carlisle, Yarger, Keller, Lewis, Butcher, Bennett, Welsch, McHaffie. SECOND ROW: Nevins, Rice, Rusie, Almond, Mackenzie, Coleman, Perigo, Bowman, Monical, Koehlein, Greeson, Lopossa. THIRD ROW: Gregory, Patrum, Pearson, Poe, Van Hoy, Ragsdale, M. Hensley, Story, Haight, Sloan, Spangle, J. Hensley, Comer, Wade. STANDING: R. Reynolds, Director, Kirkendoll, Stevens, Denny, Beall, Antrim, Ulrey, Swinney.



Band Staff
President, B. Wade; Vice-President, L. Stevens; Secretary, M. Carlisle; Librarian, C. Rice; Treasurer, J. Keller; Captain, A. Monical; Reporter, K. Bennett; Director, R. Reynolds; Drum Major, M. Swinney.



Chorus

L to R: Parks, Denny, Bean, Bennett, N. Rusie, Poe, Yarger, Taylor, Stevens, Spoon, Whitaker, C. Keller, Percy, Haught, Lewis, Beall, Emerson, Mrs. Walker, M. Rusie, Overpeck, McHaffie, Carlisle, Rice, Nevins, Mead, Patrum, Brewer, Koehnlein, Pearson, Miller, Magenheimer, Welsch, S. Perigo, Allen, J. Keller, Johnson, Lugar, Kellum, Crawford. ABSENT: Rose, L. Perigo.



Glee Club

FIRST ROW: Parks, Crawford, SECOND ROW: Denny, Bean, Emerson, N. Rusie. THIRD ROW: Bennett, Poe, Kellum, Johnson. FOURTH ROW: Lugar, Keller, M. Rusie, McHaffie, FIFTH ROW: Lewis, Overpeck, Yarger, S. Perigo. SIXTH ROW: Taylor, Allen, Beall, Stevens. SEVENTH ROW: Percy, Welsch, Carlisle, Rice. ABSENT: L. Perigo, Rose.

. . . . Vocal

The Piano
 Duke Ellington, comprehens
 demonstrating the versatility of the creative Ellington techn
 includes: IN A MELLOW-TONE, I GOT IT BAD,
 Price 60c



JUNIOR SEXTETTE
 Carolyn Rice, Mary Lou Carlisle, Shirley
 Laudig, Connie Laudig, Pat Lugar and Phyl-
 lis Park.



CLARINET QUARTETTE
 Carolyn Rice, Joan Keller, Ann Taylor,
 Mary Lou Carlisle.



SENIOR TRIO
 Wilma Bean, Alice Pearcy and Evelyn Kellum.



SENIOR SEXTETTE
 BACK: Evelyn Kellum, Ann Taylor, Alice
 Pearcy.
 FRONT: Myrle Crawford, Wilma Bean.



THEY WON'T BE AROUND ANYMORE
 FRONT ROW: Ann Taylor, Pat Yarger,
 Evelyn Denny.
 BACK ROW: Loretta Stevens, Joan Keller,
 Sarolta Beall.



THE OLD-TIMER AND THE NEWCOMER
 Beldon Wade (Oldie) and Jot Comer (Newcomer)



FRONT ROW (L to R): Hughes, Tapscott, Wilcher, Griffin, Rusie, Goldman, Lewis, Chase, Bush. SECOND ROW: Park, Poe, Wise, Baker, Huff, Neal, Hamilton, Soots, Allen, M. A. Lugar. OFFICERS: Pearcy, Reporter; Carlisle, President; Riggs, Treasurer; P. Lugar, Vice-President; Laudig, Secretary; Mrs. Hassan, Sponsor.

G. A. A.

Lettermen's Club

FRONT ROW: Charles Hagee, Don Perry, Audrey Modlin, Dwayne Copeland, Sammy Settle, Jack Wrightsman, Bob Capito, Don Dugger. BACK ROW: Charles Gregory, Phil Truax, Darrell Sheets, Bob Bowman, Mackie Pygman, Kenneth Wright, Mickey Spoon, Pete Scott, Norman Johnson, Jim Ringer, Richard Olleman, Hollis Miller, Carl Keller.





STANDING: Ronald Park, James Zigler, Donald Wright, Claude Earles, Jack Rooker, Marvin Swinney, Bob Smith, Dale Allman, Jimmy Allman, Jacob Degroot, Charles Snyder, Wayne Welsch, George Boyer, Merle Goldman. FRONT ROW: Mr. Bowman, Jack Pease, Lowell Swinney, Harlan Elkin, Jack Wise. CENTER: "Chapter Pig".

F. F. A.

B. O. O. T. S.

FRONT ROW: Myrle Crawford, Evelyn Denny, Joan Keller, Alice Percy, Ann Taylor, Wilma Bean, Sarolta Beall. BACK ROW: Loretta Stevens, Patty Yarger, Mary Lou Overpeck, Marjorie Rose, Miss Sproat, Mrs. Eggleston, Joyce Francis, Barbarba Stembel.





Editorial Staff

FRONT ROW (L to R): Miss Nay, Charles Hagee, Earl Magenheimer, Beldon Wade, Robert Story, Jimmy Sloan, Mackie Pygman, Dorothy Belle Riggs, Connie Laudig. BACK ROW: Myrle Crawford, Evelyn Kellum, Barbara Stembel, Evelyn Denny, Kay Bennett, Kay Comer, Joan Keller, Ann Taylor, Betty McHaffie, Mary Lou Carlisle, Pat Lugar. ABSENT: Alice Percy.

CAMPUS CRIER

STANDING (L to R): Marjorie Rose, Phyllis Smith, Sarolta Beall, Van-nalee Kinnett, Margaret Plummer, Peggy Beasley, Marilyn McDaniel, Mrs. Eggleston, Mary Jane Fields. CENTER: Loretta Stevens. SEATED Mary Lou Overpeck, Carolyn Rice, Charles Shrake.

Production Staff





Senior Play, "In Spring the Sap"

Prudence Prim (Joan Gunnell), a nurse; Mrs. Gertrude Hawley Stickney (Alice Percy), of Stickney Fellowship Foundation; J. Oliver Twibbley (Bill Cox), inventor and Justice of Peace; Mrs. Mince (Loretta Stevens), soda shop proprietor Prof. Squintin Glower (Carl Keller), hypnotist; Josephine Skibutski (Bethel Goldman), professional football player and Rocky's steady; Dr. Matilda Guppie (Mary Lou Overpeck), President of University; Melville Kadenza (Charles Hagee), young poet; Violet (Patty Yarger), Mrs. Mince's pretty daughter; Henry Graves (Jim Ringer), hearse driver; Pam Broomwell (Evelyn Denny), impish co-ed; Vickie Wickerson (Barbara McCoy), prettiest co-ed at University; Philip Dill (Lowell Swinney), track team manager; Susie-Mae Younghope (Jeanne Marine), young bride to be.

Mrs. Sherman (Mary Jane Fields), Freddie's mother; Hildegard Dolson (Joan Keller), no longer wants to be a wallflower; Mrs. Dolson (Wilma Bean), a busy mother; Sally (Evelyn Kellum), Hildegard's younger sister; Ellie May (Myrtle Crawford), admired Bob; Jill (Marcia Emerson), a pretty popular girl; Paige (Thelma Renner), a mischievous little girl; BACK ROW: Mr. Sherman (Jim Ringer), a big boy in knickers; Mr. Dolson (Hollis Miller), Hildegard's father; Jimmy (Don Perry), younger brother; Bobby (Phil Truax), older brother.

Junior Play, "We Shook the Family Tree"





FRONT ROW: Evelyn Kellum, Wilma Bean, Louise Soots, Margaret Bush, Doris Gibbs, Joann Gunnell. BACK ROW: Mary Jane Fields, Elsie King, Peggy Beasley, Mary Alice Park, Phyllis Smith. ABSENT: Alice Percy, Myrle Crawford, Pat Yarger.

Office Help

Librarians

FRONT ROW: Carolyn Bean, Mattie Sawyers, Carol Jo Sawyers, Rosa-lee Johnson, Ann Taylor. BACK ROW: Bonita Keltner, Miss Rice, Dorothy Hartman, Sarolta Beall, Patty Rairdon.





Latin Club

FRONT ROW: Simms, Crawford, Park, Chase, Keltner, Van Hoy, Bean, Parks, C. Laudig. SECOND ROW: Percy, Taylor, Yarger, Keller, Kellum, Lugar, Beall, Stembel, S. Laudig, Gregory. BACK ROW: Brewer, Monical, Sloan, Carlisle, Fields, Rice, Mincy, Soots, Tapscott, Vinson, Wade. ABSENT: Rose, Johnson.

Around School





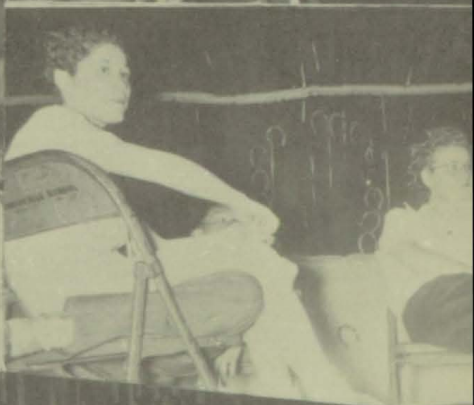
Annual Staff

SEATED (L to R): Mary Lou Overpeck, Wilma Bean, Barbara Stembel, Marjorie Rose, Lois Perigo, Patty Yarger, Jeanne Marine, Myrle Crawford, Ann Taylor, Marcia Emerson, Loretta Stevens. STANDING: Mr. Truax, Charles Hagee, Philip Truax, Joan Keller, Alice Pearcy, Bill Cox, Evelyn Kellum, Hollis Miller, Lowell Swinney.

FRONT ROW: Joan Keller, Business Secretary; Barbara Stembel, Co-literary Editor; Marjorie Rose, Co-editor; Evelyn Kellum, Co-literary Editor. BACK ROW: Bill Cox, Chairman-Advertisement; Charles Hagee, Chairman-Photography; Phil Truax, Co-editor.

Committee Heads





Once Upon a Time



Celice
Percy



Joan
Keller



Norman
Johnson



Maria
Emerson



Barbara
Stembel



Bill
Cot



Evelyn
Kellum



Loretta
Stevens



Hollis
Miller



Rosalee
Johnson



Patty
Yarger



Wayne
Remster



Swelta
Beall



Thelma
Renner



David
Zuller



Myrtle
Crawford



Vannale
Kennitt



Don
Papp



Thelma
Bean



Ann
Taylor



Phil
Truan



Virginia
Warden



Mary Louise
Overbeck



John
Smith



Mary Jane
Hicks



Myrtle
Rose



Jack
Mackenzie



Bethel
Keldman



Diana
De Hoeny



June
Lingie



Evelyn
Denny



Phyllis
Smith



Joann
Gunnell



Lois
Piriso



Betty
Nary

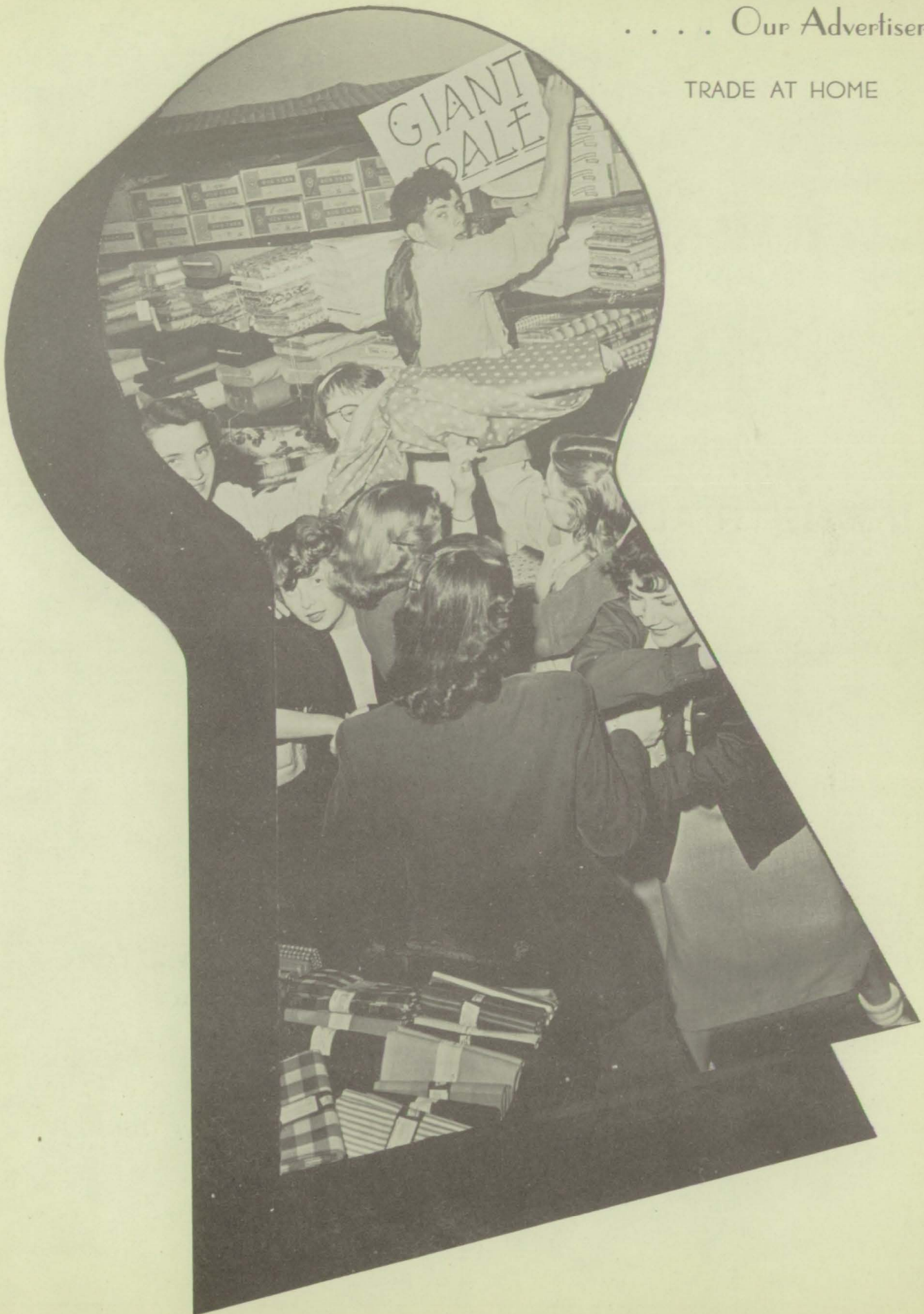


Barbara
McCoy



. . . . Our Advertisers

TRADE AT HOME





Best Wishes to the Class of '50

INDUSTRIAL ENGINEERING ASSOCIATES

CHARLES AND SARA HARAD

Sportsman Truss

Compliments of

**B. F. JONES
DEPARTMENT STORE**

Mooresville, Indiana

Compliments of

**SPANGLE MOTOR
COMPANY**

YOUR FRIENDLY DEALER

INVITATION

By becoming a depositor of this institution, you open your way to many privileges which lead to broader business relations.

If you are not a depositor here we will be pleased to have you with us so that you may find out by actual experience what it means to be affiliated with a real bank.

CITIZENS BANK

Mooreville, Indiana

Member of Federal Deposit
Insurance Corporation



GIBBS REGAL STORE

COMPLIMENTS OF

MOOREVILLE PUBLIC SERVICE CO.

LIGHT-POWER-WATER

There's A Lift To Living Electrically

Phone 134

Mooreville, Indiana

VESTAL MOTOR CO., INC.

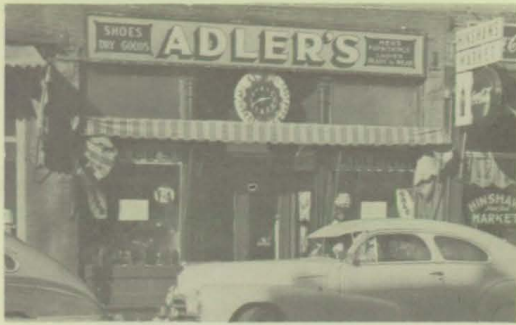
CHEVROLET

SALES

&

SERVICE

Mooreville, Indiana



**ADLERS DEPARTMENT
STORE**

Compliments of
**HARVEY FUNERAL
SERVICE**
Phone 19 Mooresville, Indiana

**H
A
Y
E
S**



**D
R
U
G
S
T
O
R
E**

**MOORESVILLE FOOD
MARKET**

8 West Main Phone 30

Compliments of
**SMITHERMAN
HATCHERIES**

Phone 24
Mooresville, Indiana

Standard Oil Products
Goodyear Tires
Phone 85



ALLISON TIRE CO.

**MOORESVILLE
UPHOLSTERY SHOP**

Furniture Custom Built
Estimates Gladly Given
Expert Workmanship
Established 1914
Prompt Service

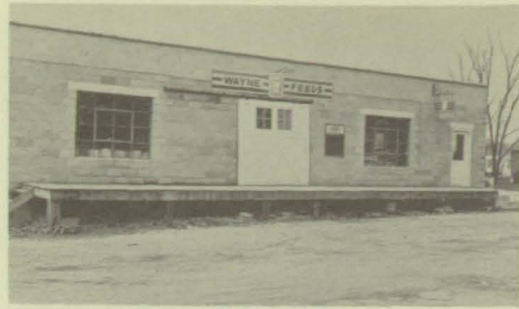
H. Stevens Prop. Phone 485F12
R. R. #1 Mooresville, Indiana



P. O. KELLER & SON



**MOORESVILLE FEDERAL
SAVINGS & LOAN ASS'N.**
Moorsville, Indiana
Savings Earning 2½%



**MOORESVILLE
FEED & LUMBER CO.**

SERVICE CLEANERS

The highest quality cleaners
at the lowest, possible price

Guy Myers, Prop.

21 West Main Phone 15

**TOWN & COUNTRY
SHOP**

Carole King Dresses
Ship & Shore Blouses

Phone 63 Moorsville, Indiana

ALLEN'S BODY SHOP

24-Hour Wrecker Service
Glass Installed
Wrecks Rebuilt

Automobile, Truck and
Tractor Painting

We Have a Complete Line of Grills

Phone 324 178 N. Scruggs St.
Moorsville, Indiana

Compliments of

CARLISLE & SON

Funeral Directors

Moorsville, Indiana

NELSON & SON

HARDWARE

Filter Queen Air Purifiers

JONES HARDWARE

PLUMBING & ELECTRICAL

SUPPLIES

Hoover Sweepers

Skelgas Dealers Phone 168

<p align="center">THE CRADLE Infants' and Children's Wear Shower Gifts Phone 137 Mooresville, Indiana</p>	<p align="center">DALE'S RADIO Radio & Electronic Service Phone 26 18 N. Indiana</p>
<p>MOORESVILLE WELDING SHOP General Repair-Blacksmithing-Oxy-Acetylene-Electric Arc-Structural Steel Fabricating Phone 305 Residence 122</p>	<p align="center">Compliments of COLEMAN AGENCY Phone 151 Mooresville, Indiana</p>
<p align="center">CORNELL SHOE SERVICE 13 N. Indiana Mooresville, Indiana</p>	<p align="center">Compliments of DR. PAUL E. CARSON Mooresville, Indiana</p>
<p align="center">Interior Decorating Painting of All Kinds BEN H. COOPER Phone 287 Mooresville, Indiana</p>	<p align="center">CONGRATULATIONS TO CLASS OF 1950 SOHIO PIPE LINES CO.</p>
<p align="center">AUDREY'S BEAUTY SHOPPE 109 Carter Street Phone 104 Mooresville, Ind.</p>	<p align="center">W. O. DENNY & SON General Auto Repair 247 E. Washington Street Phone 72 Mooresville, Ind.</p>
<p align="center">Compliments of PALMER'S PURE OIL SERVICE STATION Tires, Batteries & Lubrication</p>	<p align="center">COPELAND APPLIANCES 16 East Main Street Complete Line of Frigidaire Appliances</p>
<p align="center">MOORESVILLE TIMES East Main St. Phone 89</p>	<p align="center">A. H. LUSTY Electrical Contractor Mooresville, Indiana</p>
<p align="center">Compliments of MOORESVILLE BAKERY East Main St. Phone 81F20</p>	<p align="center">Compliments of TAYLOR'S RESTAURANT 15 West Main Street Phone 12 Mooresville, Indiana</p>

**HUNDLEY'S 5c & 10c
AND APPLIANCE STORE**

10 E. Main St. Phone 51

Compliments of

DR. R. W. VAN BOKKELEN

**MOORESVILLE
HOME & AUTO SUPPLY**

Firestone Tires
Tubes Batteries
East Main Phone 32

Compliments of

VOELZ & SON

**TOMPKINS JEWELRY
STORE**

Mooresville, Indiana

**BURTON'S D-X
TIRES AND BATTERIES**

Phone 68 Mooresville, Indiana

TRADE AT HOME

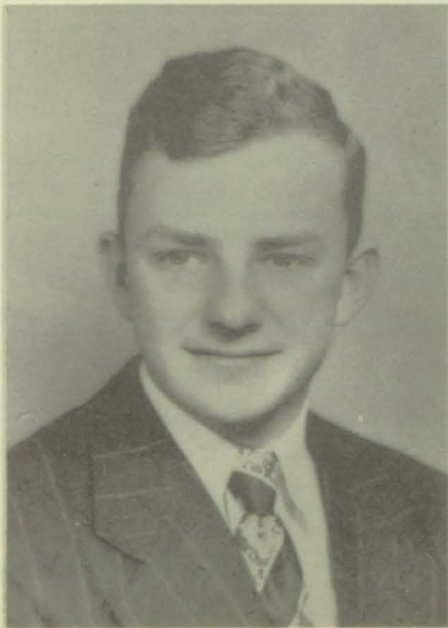
PATRONIZE THESE ADVERTISERS

We Seniors of 1950 wish to thank all those
who have been of assistance in making
it possible to publish this annual . . .

THANKS!



CO-EDITORS



PHIL TRUAX



MARJORIE ROSE

