

1868 – 1869

August Wilson

WILLIAMSPORT

DICKINSON SEMINARY

1868--1869.

Male and Female.

WILLIAMSPORT,

PENNSYLVANIA.

F. J. BURROWS.

J. CORCORAN.

A. BEEDE.

BEEDE, CORCORAN & BURROWS,

(SUCCESSORS TO H. L. HOLDEN.)

REBELS AND REAL ESTATE

A N D

DEALERS IN COAL OIL.

Entrance on Pine Street, Holden's Block, Opposite the Court House,

WILLIAMSPORT, PA.

1868-1869

REAL ESTATE SAVINGS BANK

OF

Holden, Lentz & Sallade

H. L. HOLDEN.

GEO. W. LENTZ.

J. SALLADE.

CORNER THIRD & PINE STREETS,
WILLIAMSPORT, PENN'A.

Six per cent. interest paid on all deposits remaining thirty days, and upwards.

Administrators, Executors and Attorneys, who collect, and are compelled to hold the funds any length of time, and all other parties or individuals, will find it to their interest to deposit in this bank.

Bank open at all seasonable hours. Drafts sold and Collections made at reasonable rates.

J. D. WALLACE,
Bookseller & Stationer,

22 W. THIRD STREET, NEAR COURT. WILLIAMSPORT, PA.

Keeps on hand constantly all the Text Books used in

Williamsport Dickinson Seminary;

Also, the largest and finest collection of

Standard, Miscellaneous and Professional Works

To be found outside of the larger cities.

A FULL LINE OF STATIONERY,

Adapted to the wants of students and the community generally.

News Depot in Connection.

Closing out a large stock of Wall Paper at a very small advance on first cost.

WILLIAMSPORT, June, 1869.

F. J. BURNOWS,

J. COBCORANE

A. BEEDE.

BEDE, COBORN & BURNOWS,

(SUCCESSORS TO H. L. HOLDEN.)

DEALERS IN COAL,

A. M. D.

DEALERS IN COAL,

Entrance on Pine Street, Holden's Block, Opposite the Court House.

WILLIAMSPORT, PA.

1868-1869

REAL ESTATE SAVINGS BANK

OF

Holden, Lentz & Sallade

H. L. HOLDEN.

GEO. W. LENTZ.

J. SALLADE.

CORNER THIRD & PINE STREETS,
WILLIAMSPORT, PENN'A.

Six per cent. interest paid on all deposits remaining thirty days, and upwards.

Administrators, Executors and Attorneys, who collect, and are compelled to hold the funds any length of time, and all other parties or individuals, will find it to their interest to deposit in this bank.

Bank open at all seasonable hours. Drafts sold and Collections made at reasonable rates.

J. D. WALLACE,
Bookseller & Stationer,

22 W. THIRD STREET, NEAR COURT. WILLIAMSPORT, PA.

Keeps on hand constantly all the Text Books used in

Williamsport Dickinson Seminary;

Also, the largest and finest collection of

Standard, Miscellaneous and Professional Works

To be found outside of the larger cities.

& FULL LINE OF STATIONERY,

Adapted to the wants of students and the community generally.

News Depot in Connection.

Closing out a large stock of Wall Paper at a very small advance on first cost.

WILLIAMSPORT, June, 1869.

IMPORTANT.
CITY MUSIC STORE,

No. 17 West Third Street,
WILLIAMSPORT, PENN'A.

THE PIANO FORTE WARE ROOM connected with the City Music Store is one of the finest in the State. Purchasers will find here an advantage over Philadelphia or New York. In the same room can be seen Pianos from the three most celebrated makers in this country :

STEINWAY & SONS, New York.

CHICKERING & SONS, Boston,

DECKER BROTHERS, New York.

Also, the GOLD MEDAL PIANO, by KNABE & CO., Baltimore.

The room is kept by

D. S. ANDRUS & CO.

Wholesale and Retail Dealers in

PIANOS,

Warranted for 7 Years. The celebrated

M E L O D E O N S ,

Made by PRINCE & Co., Buffalo. Warranted for five Years.

CABINET ORGANS,

By MASON & HAMLIN,

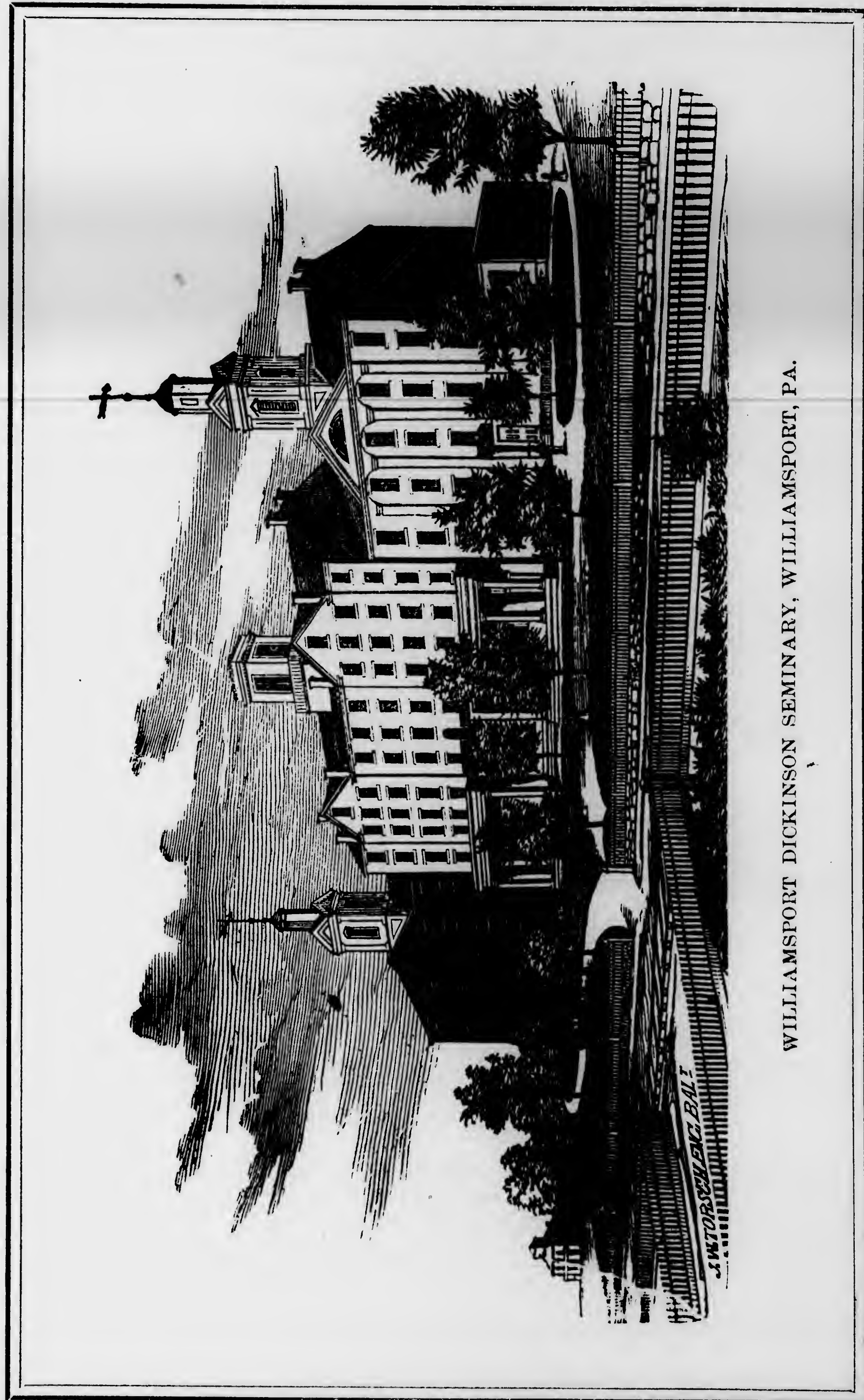
Also, Sheet Music and Music Books, Piano Stools,

EMBROIDERED PIANO COVERS, VIOLIN STRINGS, &c.

Pianos, Melodeons and Cabinet Organs are kept to rent. The rent applied if the instrument is purchased.

Pianos and Organs tuned and repaired by leaving directions at the Store as above.

P. O. Box, 2506,
WILLIAMSPORT, PA. } **D. S. ANDRUS & CO.**



WILLIAMSPORT DICKINSON SEMINARY, WILLIAMSPORT, PA.

TWENTY-FIRST ANNUAL CATALOGUE
OF THE
OFFICERS AND STUDENTS
OF
Williamsport Dickinson Seminary,
FOR THE ACADEMICAL YEAR,
FROM
AUGUST 27, 1868, TO JUNE 23, 1869.

WILLIAMSPORT, LYCOMING CO., PA.

WILLIAMSPORT, PA.:
HUSTON & CO., PRINTERS.
1869.

DIRECTORS.

ABRAM UPDEGRAFF, President,	-	-	<i>Williamsport.</i>
REV. IRVIN H. TORRENCE, Secretary,	-	-	<i>Philadelphia.</i>
REV. JAMES, H. BROWN,	-	-	<i>Baltimore, Md.</i>
REV. T. M. REESE,	-	-	<i>Williamsport,</i>
REV. B. B. HAMLIN, A. M.	-	-	"
SAMUEL LOVE, Esq.,	-	-	"
COL. JACOB SALLADE,	-	-	"
HON. ELI SLIFER,	-	-	<i>Lewisburg.</i>
JOHN WEISEL, Esq.,	-	-	<i>Williamsport.</i>

VISITING COMMITTEES.

CENTRAL PENNSYLVANIA CONFERENCE.

REV. E. W. KIRBY.	REV. B. F. STEVENS.
-------------------	---------------------

PHILADELPHIA CONFERENCE.

REV. JACOB DICKERSON.	REV. R. J. CARSON.
-----------------------	--------------------

BALTIMORE CONFERENCE.

REV. JOSEPH FRANCE.	REV. J. H. C. DOSH.
---------------------	---------------------

FACULTY.

REV. THOMPSON MITCHELL, D. D., PRESIDENT,	<i>Moral Philosophy and Belles Letters.</i>
H. A. CURRAN, A. M.,	<i>Ancient and German Languages.</i>
CHARLES J. LITTLE, A. M.,	<i>Mathematics.</i>
H. C. MOYER,	<i>Natural Science.</i>
F. S. LAW, A. B.,	<i>Instrumental and Vocal Music.</i>
MISS ANNA M. THOMSON, PRECEPTRESS,	<i>French Language.</i>
MISS FANNIE B. ROWLAND,	<i>Painting and Drawing.</i>
	<i>Higher English.</i>
MISS MAGGIE S. TAYLOR,	<i>Preparatory Department.</i>

CLASS GRADUATING.

JUNE 23, 1869.

Miss Madge J. Strine, B. S. Lemuel H. Beers, A. B.
 Miss Rosa C. Vail, A. B. Jacob S. Comp, A. B.
 *Jacob L. Steinmetz, A. B.

* Class 1868.

STUDENTS.

LADIES.

NAMES.	RESIDENCES.
Bailey, Addie	Williamsport.
Barret, Emma P.	"
Blish, S. Adie	Hampton.
Conner, Sarah E.	Marion Station, Md.
Cramer, Carrie S.	Williamsport.
Cramer, Julia K.	"
Crever, Mary H.	"
Crownover, Clara C.	"
Dart, Libbie	"
Dodson, Jessie F.	"
Dodson, Ida M.	"
Edler, Fannie J.	"
Edler, Mary F.	"
Edwards, Fannie	"
Fleschhut, Carrie C.	Laporte.
Foulk, Jennie	Williamsport.
Friling, Emma C.	Sunbury.
Gibson, Louisa M.	Emporium.
Gillespie, Clara E.	Big Run.
Griggs, Rebecca E.	Rose Valley.
Hagenbuch, Mattie M.	Williamsport.
Hagenbuch, Tillie B.	"
Hahn, Lizzie S.	Milesburg.
Harden, Octavia	Williamsport.
Harris, Bell M.	Wrightsville.
Hoffman, Mary E.	Martinsburg, W. Va.
Holmes, Lucy C.	Williamsport.
Holmes, Aggie J.	"
Horner, Margie	Baltimore, Md.
Horner, Mary J.	" "

NAMES.	RESIDENCES.
Howell, Elma V. - - - -	<i>Ashland.</i>
Keith, Sophia P. - - - -	<i>Broad Top City.</i>
Kline, Maggie F. - - - -	<i>Sunbury.</i>
Long, Lizzie - - - -	<i>Williamsport.</i>
McDonald, Mary A. - - - -	<i>Pen Yan, N. Y.</i>
McLaughlin, Emma J. - - - -	<i>New Germantown.</i>
Millar, Maggie J. - - - -	<i>New York City.</i>
Millar, Fannie E. - - - -	" " "
Morrison, Mattie E. - - - -	<i>New Germantown.</i>
Morrison, Virginia H. - - - -	<i>Williamsport.</i>
Mott, Frank B. - - - -	"
Myers, Ellie C. - - - -	<i>Lancaster.</i>
Neeld, Phoebe E. - - - -	<i>Williamsport.</i>
Nowell, Annie M. - - - -	<i>Friendship, Md.</i>
Poser, Augusta. - - - -	<i>Williamsport.</i>
Pott, Annie E. - - - -	"
Price, Alice C. - - - -	"
Price, Ida, - - - -	"
Rank, Clara E. - - - -	"
Reese, Annie - - - -	<i>Wilkesbarre.</i>
Reese, Bessie - - - -	"
Reese, Emma - - - -	"
Reinhold, Hannah - - - -	<i>Williamsport.</i>
Rogers, Lizzie W. - - - -	"
Scholl, Sarah, - - - -	"
Schultz, Lizzie A. - - - -	"
Stevenson, Susan - - - -	"
Stratford, Annie - - - -	<i>Lewistown.</i>
Stratford, Emma - - - -	"
Strine, Madge J. - - - -	<i>Martinsburg, W. Va.</i>
Stroh, Kate - - - -	<i>Sunbury.</i>
Thomas, Elida - - - -	<i>Williamsport.</i>
Trowbridge, Mary - - - -	<i>Toledo, Ohio.</i>
Tubbs, Kate - - - -	<i>Laurenceville.</i>
Updegraff, Lucy L. - - - -	<i>Williamsport.</i>
Updegraff, Sallie H. - - - -	"
Vail, Rosa C. - - - -	<i>Princess Bay, St. Isl'd.</i>
Wagner, Emma C. - - - -	<i>Bellefonte.</i>
Warner, Guelielma - - - -	<i>Muncy.</i>
White, Emma - - - -	<i>Hampton.</i>

NAMES.	RESIDENCES.
Winegardner, Sallie H. - - - -	<i>Williamsport.</i>
Winslow, Clara E. - - - -	"
Wise, Susan - - - -	"
Woodward, Anna R. - - - -	"
Wright, Ada M. - - - -	"



STUDENTS.

GENTLEMEN.

NAMES.	RESIDENCES.
Addams, J. V. R.	Reading.
Albright, G. S.	Trexlerstown.
Alexander, J. F.	Milheim.
Appleman, P. S.	Hagerstown, Md.
Ashman, L.	Three Springs.
Atwood, C. M.	Williamsport.
Bates, C. H.	"
Beers, L. H.	Orbisonia.
Bender, H. R.	Greencastle.
Bennett, H. C.	Williamsport.
Bishop, W. B.	Strasburg.
Bloom, W. H.	Williamsport.
Bogle, R.	Milton.
Bowman C. S.	St. Charles, Ill.
Brewer, W. M.	Fall Brook.
Bryan, J.	Williamsport.
Brittain, H. J.	Vineland, N. J.
Bryson, W.	Centralia.
Buckalew, W. J.	Bloomsburg.
Buckingham, W. R.	Shamokin.
Buckingham, J. D.	"
Caldwell, B. C.	Williamsport.
Campbell, I. P.	Pine Grove.
Campbell, R. P.	" "
Carrow, J. F.	Still Pond, Md.
Carver, W. A.	Havre de Grace, Md.
Chaney, J. C.	Dunkirk, Md.
Cole, G. D.	Chicago, Ill.
Comp, J. S.	Markleville.
Conner, B. C.	Marion Station, Md.

NAMES.	RESIDENCES.
Conner, T. F.	Lime Ridge.
Coulbourn, W. J.	Burnettsville, Md.
Coulbourn, I. H.	Marion Station.
Cramer, A.	Williamsport.
Cramer, J. W.	"
Crawford, M.	"
Crawford, W. F.	"
Curtin, H. R.	Roland.
Dart, W.	Williamsport.
Davis, W. C.	Hustentown.
Deaver, E. E. A.	West Dublin.
Dietrick, E. P.	Williamsport.
Dietrick, F. P.	"
Dummire, W. W.	Mc Veytown.
Earley, R. M.	Leesburg.
Edgar, S. W.	Espy.
Edkin, S. H.	Williamsport.
Edwards, W. J.	Strasburg.
Elden, W. P.	Williamsport.
Elden, M.	"
Ellwert, C. G.	"
Erieg, W. G.	"
Evans, G. J.	Statington.
Faus, T. S.	Unityville.
Fox, J. C.	Buckhorn.
Fredericks, J. T.	Lock Haven.
Freeman, R. N.	Williamsport.
Geise, F. P.	"
Gilbert, H.	Salladasburg.
Gray, T. D.	Caledonia.
Guldin, J.	Montgomery Station.
Hagerman, T. S.	Williamsport.
Hamlin, B. B.	Huntingdon.
Hammond, W. S.	Williamsburg.
Harden, W. C.	Williamsport.
Harrison, J. J.	"
Harshbarger, H.	Zion.
Hart, F. I.	Williamsport.
Hartranft, U. C.	Dewart.
Harvey, J. Don	Williamsport.

NAMES.	RESIDENCES.
Haulman, V. T. - - - -	<i>St. Thomas.</i>
Hays, J. K. - - - -	<i>Williamsport.</i>
Heathcote, F. M. - - - -	"
Heim, A. W. - - - -	<i>Shamokin.</i>
Hepburn, W. M. - - - -	<i>Williamsport.</i>
Hill, T. J. - - - -	<i>Willow Springs.</i>
Hill, F. P. - - - -	<i>Lime Ridge.</i>
Hilliard, F. N. - - - -	<i>Williamsport.</i>
Hilliard, W. L. - - - -	"
Hobson, J. H. - - - -	<i>Dover, Del.</i>
Hoffman, W. F. - - - -	<i>Williamsport.</i>
Hoffman, J. A. - - - -	"
Hopewell, J. H. - - - -	<i>Oil City.</i>
Horner, M. T. - - - -	<i>Baltimore, Md.</i>
Howell, A. P. - - - -	<i>Shamokin.</i>
Humes, A. J. - - - -	<i>Williamsport.</i>
Humes, D. J. - - - -	"
Hunt, J. - - - -	<i>Salem, N. J.</i>
Hunter, F. T. - - - -	<i>Williamsport</i>
Jones, E. - - - -	<i>Duncannon.</i>
King, J. E. - - - -	<i>Williamsport.</i>
Kinley, L. - - - -	<i>Cogan Station.</i>
Koons, G. W. - - - -	<i>Loyal Sock.</i>
Kramer, I. A. - - - -	<i>Williamsport.</i>
Kramer, C. L. - - - -	"
Larkins, H. - - - -	<i>Barre.</i>
Lewis, C. L. - - - -	<i>East Branch, N. Y.</i>
Linton, C. A. - - - -	<i>Williamsport.</i>
Lloyd, E. L. - - - -	"
Love, H. C. - - - -	<i>Center Line.</i>
Loveland, H. D. - - - -	<i>Lamar.</i>
Lundy, W. - - - -	<i>Warrensville.</i>
Mankey, C. - - - -	<i>Williamsport.</i>
Mansel, J. - - - -	<i>Warrensville.</i>
Mattison, E. L. - - - -	<i>Williamsport.</i>
McCloskey, A. E. - - - -	<i>Heiner's Run.</i>
McCloskey, M. - - - -	"
McCollum, W. E. - - - -	<i>Jerseytown.</i>
McEntire, J. C. - - - -	<i>Pleasant Gap.</i>
Meek, R. C. - - - -	<i>Slifer.</i>

NAMES.	RESIDENCES.
Miller, A. C. - - - -	<i>Williamsport.</i>
Miller, W. H. H. - - - -	"
Milnes, W. B. - - - -	<i>Espy.</i>
Montgomery, J. - - - -	<i>Orangeville.</i>
Mitchell, M. J. - - - -	<i>Williamsport.</i>
Mitchell, J. H. - - - -	"
Moore, J. - - - -	"
Moore, J. M. C. - - - -	"
Mowrer, L. K. - - - -	<i>Danville.</i>
Moyer, A. J. - - - -	<i>Crescent.</i>
Mumper, A. M. - - - -	<i>Dillsburg.</i>
Mundy, F. - - - -	<i>Williamsport.</i>
Mundy, R. - - - -	"
Mundy, H. - - - -	"
Mussina, T. S. - - - -	"
Newell, J. - - - -	<i>Salem, N. J.</i>
Oplinger, G. T. - - - -	<i>Danielsville.</i>
Opp, J. A. - - - -	<i>Muncy.</i>
Ort, R. B. - - - -	"
Otto, J. - - - -	<i>Williamsport.</i>
Patton, Jr., J. - - - -	<i>Curwinsville.</i>
Potts, W. - - - -	<i>Philadelphia.</i>
Potts, L. - - - -	"
Price S. - - - -	<i>Williamsport.</i>
Reed, W. E. - - - -	<i>Lairdsville.</i>
Reed, G. F. - - - -	"
Redfoot, A. G. - - - -	<i>Loyal Sock.</i>
Reese, T. M. - - - -	<i>Wilkesbarre.</i>
Reese, F. P. - - - -	"
Rentz, W. F. - - - -	<i>Montgomery Station.</i>
Richardson, M. K. - - - -	<i>Aberdeen.</i>
Rickart, F. E. - - - -	<i>Armstrong.</i>
Riddle, C. S. - - - -	<i>Montoursville.</i>
Rishel, A. - - - -	<i>Danville.</i>
Rothrock, J. G. - - - -	<i>Williamsport.</i>
Ruch, L. - - - -	"
Runnells, C. A. - - - -	"
Runyan, H. M. - - - -	"
Sage, W. G. - - - -	<i>Emporium.</i>
Sayre, F. M. - - - -	<i>Laporte.</i>

NAMES.	RESIDENCES.
Sayre, A. M.	Laporte.
Schock, J. F.	Manor Hill.
Seydell, J. A.	Williamsport.
Shadle, Will T.	Nippenose.
Shrade, L.	Williamsport.
Shultz, J.	"
Slate, J. W.	"
Smith, C. H.	Linglestown.
Smith, J.	Williamsport.
Smith, S.	Cogan Station.
Soloman, H.	Williamsport.
Spangler, J. L.	Center Hill.
Spottswood, W. F.	Williamsport.
Stabler, E.	Parkton, Md.
Stearns, G. L.	Williamsport.
Stearns, C. R.	"
Sterner, G. W.	Bloomsburg.
Strieby, J.	Williamsport.
Strohm, W. H.	Center Hill.
Sturgis, C. A.	Lewisburg.
Swope, G. H.	Fairfield.
Thomas C. N.	Williamsport.
Tonner, J. W.	Milesburg.
Tosier, F. A.	Caledonia.
Troxell, H. G.	Williamsport.
Tull, J. E.	Marion Station, Md.
Twitmyer, J.	Zion Center.
Ulman, H.	Williamsport.
Ulman, H. A.	"
Updegraff, D. S.	"
Updegraff, S.	"
Van Reed, J. L.	Reading.
Walton, T. H.	Muncy.
Waltz, M. T.	Cogan Station.
Weaver, T. M. C.	Bellefonte.
Weaver, T. I.	Slatington.
Weigel, E.	Armstrong.
Whittington, J. H.	Marion Station, Md.
Whittington, W. E.	"
Wilder, J. T.	Linden.

Williams, J. M.	Slatington.
Williamson, A.	Cogan Station.
Wilson, C. T.	Harre De Grace, Md.
Wilson, T. P. S.	Williamsport.
Winslow, R. S.	"
Wise, H.	Loyal Sock.
Wise, V.	Armstrong.
Wolfe, H. L.	Milesburg.
Wright, E.	Williamsport.
Young, A. T.	"
Youngman, J. M.	"
Zirnhelt, J. S.	Swatara.

Course of Study.

Upon completing the following Course, the Student will be entitled to the Degree of Bachelor of Arts. To those who omit the languages, a Scientific Diploma will be given. Those not wishing to complete the Course, can pursue such studies as they desire, subject to the action of the Faculty.

PREPARATORY.

FIRST CLASS.

Spelling and Defining,	- - - - -	Sander's Series.
Geography,	- - - - -	Mitchell.
Arithmetic—Mental,	- - - - -	Brooks.
" Written,	- - - - -	Robinson.
English Grammar,	- - - - -	Clark.
First Lessons in English Composition.	- - - - -	Quakenbos.
General History,	- - - - -	Goodrich.

SECOND CLASS.

Reading,	- - - - -	Parker and Watson.
Geography and Map Drawing,	- - - - -	Mitchell.
English Grammar,	- - - - -	Clark.
History of the United States,	- - - - -	Goodrich or Quakenbos.
Etymology,	- - - - -	Lynd.
Arithmetic,	- - - - -	Test Examples, Robinson.
Composition and Declamation.	- - - - -	

CLASSICAL AND SCIENTIFIC.

FIRST YEAR—FIRST TERM.

English Grammar,	- - - - -	Clark.
Modern History,	- - - - -	Willson.
Algebra,	- - - - -	Loomis.
Latin Grammar,	- - - - -	Harkness.

SECOND TERM.

Advanced Composition and Rhetoric,	- - - - -	Quakenbos.
Modern History—continued,	- - - - -	Willson.
Algebra,	- - - - -	Loomis.
Greek Grammar and Reader,	- - - - -	Harkness.
Greek Grammar,	- - - - -	Hadley.
Classical Antiquities,	- - - - -	

THIRD TERM.

Advanced Composition and Rhetoric,	- - - - -	Quakenbos.
Physical Geography,	- - - - -	Mitchell.
Physiology,	- - - - -	Hitchcock.
Algebra,	- - - - -	Loomis.
Latin—Cæsar,	- - - - -	
Greek Grammar,	- - - - -	Hadley.
DURING THE YEAR—Orthography, Reading, Composition, Declamation, and Vocal Music.		

SECOND YEAR—FIRST TERM.

Ancient History and Geography,	- - - - -	Willson.
Biblical Antiquities,	- - - - -	Nevin.
Astronomy,	- - - - -	Mattison's Burritt.
Zoology,	- - - - -	Agasiz.
Geometry,	- - - - -	Loomis.
Latin—Cæsar or Cornelius Nepos,	- - - - -	
Greek—Anabasis,	- - - - -	Owen.
Latin and Greek Prose Composition.	- - - - -	Arnold.

SECOND TERM.

Ancient History and Geography,	- - - - -	Willson.
Natural Philosophy,	- - - - -	Peek's Ganot.
Mental Philosophy,	- - - - -	Upham.
Geometry,	- - - - -	Loomis.
Latin—De Senectute or Ovid,	- - - - -	
Greek—Anabasis; Greek Testament,	- - - - -	Owen.
Latin and Greek Prose Composition.	- - - - -	Arnold.

THIRD TERM.

Rhetoric,	- - - - -	Quakenbos.
Philosophy of History and Chronology,	- - - - -	Willson.
Constitution of United States,	- - - - -	Sheppard.
Mental Philosophy,	- - - - -	
Natural Philosophy,	- - - - -	Peek's Ganot.
Latin—Virgil or Sallust,	- - - - -	
Greek—Memorabilia and Odyssey,	- - - - -	Owen.
Latin and Greek Prose Composition,	- - - - -	Arnold.
DURING THE YEAR—Composition, Declamation and Vocal Music.		

THIRD YEAR—FIRST TERM.

Moral Philosophy,	- - - - -	Wayland.
Evidences of Christianity,	- - - - -	Paley.
Chemistry,	- - - - -	Youmans.
Botany,	- - - - -	Gray.
*Trigonometry, (Plain and Spherical,) Mensuration, Leveling, Surveying and Navigation,	- - - - -	Loomis.
Latin—Cicero's Orations,	- - - - -	
Greek—Select Orations of Demosthenes and Iliad,	- - - - -	

SECOND TERM.

Political Economy,	- - - - -	Wayland.
Logic,	- - - - -	Coppee.

Geology, - - - - -	Hitchcock.
*Analytical Geometry, - - - - -	Loomis.
*Mechanical Philosophy, - - - - -	Snell, s Olmstead.
Latin—De Officiis and Livy, - - - - -	
Greek—Edipus Tyrannus of Sophocles, - - - - -	

THIRD TERM.

Butler's Analogy, - - - - -	Emory & Crooks.
Chemistry, - - - - -	Youmans.
Geology, (continued,) - - - - -	Hitchcock.
*Calculus, Differential and Integral, - - - - -	Loomis.
*Practical Astronomy, - - - - -	Loomis.
Use of the Globes, - - - - -	Keith.
Latin—Horace and Tacitus, - - - - -	
Greek—Prometheus of Æschylus, - - - - -	

DURING THE YEAR—Composition, Declamation and Elocution.

MODERN LANGUAGES.

GERMAN COURSE.

Grammar, - - - - -	Woodbury.
Reader, - - - - -	"
Wilhelm Tell, - - - - -	Schiller.
Jungfrau von Orleans, - - - - -	"
Iphigenie auf Tauris - - - - -	Goethe.
Faust, - - - - -	"
Dictionary, - - - - -	Adler.

FRENCH COURSE.

Grammar, - - - - -	Fasquelle.
Colloquial Reader, - - - - -	"
Paul et Virginia, - - - - -	St. Pierre.
Classic Reader, - - - - -	De Fivas.
Corinne, - - - - -	Mme De Stael.
L'Allemagne, - - - - -	"
Les Miserables, - - - - -	Victor Hugo
Dictionary, - - - - -	Surene.

ORNAMENTAL BRANCHES.

DRAWING AND PAINTING.—This department receives liberal attention. Superior facilities are furnished, under a competent Instructor, exclusively devoted to this department, for the study and practice of Linear and Perspective Drawing, Pastal and Monochromatic Painting, Painting in Oil, and in Water Colors.

MUSIC.—Music receives special attention.

The Ladies are allowed to substitute these branches, together with German and French, for some of the higher studies in Mathematics, and for the Greek Language.

* For those studies marked with a * others may be substituted. Thus the Course may be accomodated to the wants of Ladies and Gentlemen.

The classes in Mensuration, Leveling and Surveying, are practiced in the use of the Quadrant and other iustruments, and in Plotting.

In the department of Ancient Languages, the classes are practiced in oral and written exercises in Latin and Greek, throughout the Course; and, in the third year, in writing translations from Latin into Greek, and from Greek into Latin. In addition to the books above named, Zumpt's Latin Grammar and Kuhner's Greek Grammar are used.

Anthon's Classical Dictionary, Smith's Dictionary of Greek and Roman Biography and Mythology, Ramshorn's Latin Synonyms, Robinson's Lexicon of the New Testament, and Forbiger's Ancient Geography, are recommended as books of reference.

Lectures will be given from time to time in the various departments.

The classes in the First Year of Academic studies have exereises in reading and analyzing Milton, Thompson, and other poets, in connection with a course of familiar lectures on the principles of English Grammar.

A NORMAL CLASS will be formed, (when required,) and special attention will be given to those who may wish to prepare themselves for the important duties of teaching.

A BIBLICAL CLASS will also be formed for the benefit of such as have the Ministry in view.

Location.

WILLIAMSPORT is one of the most beautiful and healthy places in the State. It has never been subject to epidemics of any kind. Many coming to the School sickly, have returned fully restored. The location is central and accessible from all quarters. Rail Roads bring us within a few hours' ride of Elmira, Lock Haven, Erie, Danville, Pottsville, Harrisburg, Hollidaysburg, Philadelphia, Baltimore and New York. No more desirable position for a Seminary of Learning can be found.

ORGANIZATION.

The school is organized on the most approved plan of the best institutions of New York and New England. It embraces both sexes, under the same government and instruction. The President and the other members of the Faculty occupy apartments in the building, eat at the same table, and have a constant oversight of all the Students.

The Ladies' private and public rooms are entirely separate from the others, and there is no association of the sexes but in the presence of their instructors. *The Ladies and Gentlemen have less freedom of intercourse here than at home.*

The happy influence, *mutually exerted*, in their slight association in the recitation-room, at the table, and in the public exercises of the Chapel, is to be seen in the cultivation of a cheerful and animated disposition,—in the formation of good habits and manners,—in ardent devotion to study,—and in the attainment of high moral character. These with many other valuable results, have established the fact, that the best plan for a school is, according to the evident design of Providence in the constitution of society, on the basis of a well regulated Christian family.

ACCOMMODATIONS.

The buildings will accommodate (two in a room) over two hundred students. They are of brick, heated by furnaces in the cellar, and supplied with water. The rooms are large and well ventilated. In the entire arrangement of the buildings great care has been had for the comfort and health of the occupants. The grounds contain about five acres, affording sufficient room for exercise and play.

BOARDING, ETC.

By the following list of prices it will be seen that our total charges are quite as low as those of any institution of like grade in this State; not excepting

those schools in which cheap scholarships have been sold. We desire to place the cost of education to the lowest point possible, and thus afford to the masses, sound intellectual, and moral culture. Board, including washing (10 pieces), room and fuel, is \$3.80 per week.

CALENDER AND EXPENSES.

The Seminary Year is divided into three unequal terms. Pupils are received at any time. Deduction for absence is made on recommendation of the Faculty to the Treasurer. Bills payable in advance.

	COMMENCES.	ENDS.
FALL TERM, - - -	Aug. 26, 1869.	December 15—16 weeks.
WINTER TERM, - - -	Jan. 6, 1870.	March 30—12 "
SUMMER TERM, - - -	Mar. 31, 1870.	June 22—12 "

	PER WEEK,	PER YEAR OF 40 WEEKS.
Board, Washing, Fuel and furnished Rooms,	\$3.80	\$152.00

TUITION.	PER TWELVE WEEKS.
" Preparatory Department, - - -	\$5 00
" " " " - - -	6 00
" Scientific " - - -	7 00
" " Lectures, - - -	1 00
" Classical " - - -	8 00
Incidental Charges, heating and cleaning public rooms, halls, &c., - - -	1 00
Total charge in Preparatory Department, per year, - - -	\$175 33
" " Scientific " " - - -	178 66
" " Classical " " - - -	182 00

Music, Drawing, Painting, and Modern Languages, and Wax Fruit, extra, as follows:

	PER TERM.
German and French, each - - -	\$3 50
Drawing, - - -	4 00
Monochromatics and Pastel Painting, each - - -	5 00
Painting in Water Colors, - - -	5 00
Oil Painting, - - -	8 00
Piano Music, (with use of instrument for practice,) - - -	12 00
Melodeon, " - - -	12 00
Vocal " - - -	1 00

Students remaining less than a Term will be charged at the rate of \$3.95 per week for board, &c. No deduction made for absence except in cases of protracted sickness.

Wash Bowls and Pitchers furnished at cost and taken back at same price, if uninjured. The same rule for Door Keys.

Five dollars must be left on deposit, on entering, to cover damages that the student may do, to room or other property. This will be returned, when the student leaves, in case he has done no injury to room or property.

VACATIONS.

There are two vacations. One of three weeks at the close of the Fall Term, to include the holidays; another of nine weeks at the close of the School Year.

TERMS OF ADMISSION.

1. The Student must be well recommended as to moral character. The School is not designed to be a House of Refuge.

2. Must arrange with the Treasurer, all bills, before attending Recitations.
3. Must take at least four studies, unless excused by the Faculty.
4. Minors must deposit with the President all spending money, to be returned in such amounts as he may think best.
5. Must agree to comply with all the Rules and Regulations of the School.

N. B.—Each Student will be considered a member of the Institution, until due notice shall have been given of intention to leave, and permission obtained of the President.

ROOMS AND CLOTHING.

The rooms are furnished with all heavy articles, but the Students must bring their own sheets (for double beds,) pillows, pillow cases, blankets, counterpanes and towels, and find their own brooms, mirrors, coal oil and lamps. Bed clothes, pillows, and pillow cases will be furnished, if desired, at 30 cents per week extra. Those who prefer us to do so will please inform us in advance.

Students should be supplied with warm, durable clothing, heavy boots and shoes, an umbrella, and a pair of slippers to be worn while in the building. *All articles of clothing should be carefully marked with the full name.*

APPARATUS.

The Seminary is furnished with a collection of apparatus, together with full sets of Globes, Maps and Charts, and a Cabinet of Minerals, thus affording facility for illustration and experiment.

DISCIPLINE.

The discipline is mild, but firm and impartial. While every encouragement will be given to the orderly and studious, and due allowance be made for youthful indiscretions, yet the lawless and refractory cannot long remain among us.

RELIGIOUS SERVICES.

Every Student is required to attend religious services at the opening and close of school, each day, as well as public worship, morning and evening, every Sabbath, *at such place as parents or guardians may designate.*

N. B.—Each Student must be supplied with a Bible, to be read *without note or Sectarian comment*, in the morning and evening services of the Chapel. The whole school read in concert.

LITERARY SOCIETIES.

Besides the regular weekly exercises in Composition and Declamation, there are three flourishing Literary Societies in the Institution; the "Belles Lettres," "Gamma Epsilon," and "Tripartite Union," each of which prepares and reads to the school a paper once a month. About 1,700 volumes are in the Societies' Libraries.

MERIT AND DEMERIT.

A strict weekly record is kept of all the exercises of the school, from which record the Students will be graded.

A record of demerits is also kept. Tardiness, unexcused absences from required exercises, and all disorderly conduct will subject the student to demerit marks. Ten such marks bring a private reproof before the Faculty; Twenty, a public reprimand before the whole school; and Thirty may send the offender away. Sessional reports are sent to parents when requested.

A WORD TO PARENTS.

1. Try to have your children here on the first day of the term, *but not before*, as we will not be ready to receive them. The classes are on the second day formed and it will be better for all concerned that the student start regularly with his class.

2. If possible do not call them away during the session. Absence, if only for a few days, disarranges the class, and is generally the beginning of irregularity on the part of the scholar.

3. Do not allow your children to leave the school before the examinations, unless it cannot be avoided. Serious inconvenience, to all concerned, often arises from a neglect of this caution.

4. Supply them *very sparingly* with spending money. Parents cannot be too cautious on this point.

5. Select for your child one of the Instructors, as a Patron, to distribute his funds. In this way a more judicious use of your money will be made, and your child will be kept from many temptations.

N. B.—These last two suggestions are to be regarded as established rules of the school.

Students not boarding in the Institution, must observe the following additional rules:

1. Attend Evening Prayers.
2. Must attend all the Seminary Exercises punctually.
3. Must spend the intervals between recitations in the Study Hall.
4. Must account for all absence by written excuse without delay, time and number of recitations being specified.
5. Must not visit the rooms of boarders without permission.

By-Laws.

1. During the hours of study, the students shall not be unnecessarily absent from their rooms.
2. At the time appointed to attend prayers, recitation, lecture, or other exercise, each student shall repair *quietly and promptly* to the place designated.
3. At no time shall any student loiter in the halls, or about the doors, or indulge in jumping, wrestling, loud talking, whistling, or any other unnecessary noise, or soil the building with tobacco.
4. The students shall not be absent from their rooms at night after the hour of study indicated by the ringing of the bell, nor shall they attend parties or mixed assemblies, without permission from the President; nor shall they at any time, visit taverns, eating houses, or other places of public resort, or on any occasion indulge in the use of intoxicating liquors.
5. All profane and indecent language, playing at games of chance, injuring the property of the Institution or of citizens, quarrelling, fighting, the carrying of fire-arms or other dangerous weapons, are strictly forbidden.
6. No student shall leave the limits of the town for a longer time than one hour without permission from the President.
7. Each student will be held strictly accountable for any damage he or she may cause to the Seminary property. Damages by unknown parties may be assessed on the school.
8. The Teachers must, at all times, have access to the students' rooms, and if it be judged necessary, the rooms will be cleaned at the expense of the occupants.
9. Cleanliness of person and of apparel, and a gentlemanly and lady-like deportment must be observed by all.
10. No water, dirt or other material, shall be thrown from any window in the buildings, or down the hot-air flues, or in the halls after they have been cleaned.
11. Students must have their rooms swept and in order, and their lights extinguished, at the established hours.
12. No student will be allowed to go a bathing, skating, fishing, gunning or riding, without permission.
13. The students must not visit the kitchen, dining-room or any other room, except for civil and polite purposes.

14. The Sabbath must be strictly observed by all. No walking about, visiting, or receiving of visits, will be allowed. All must attend public worship twice during the day, at such places as they or their guardians may prefer.
15. No lady shall, at any time, receive calls from gentlemen at her own room. Friends from a distance can see the ladies in the parlor.
16. The young ladies will not be allowed to leave the Seminary grounds, at any time, without permission; and the gentlemen will be restricted at the discretion of the Faculty.
17. No student shall change his or her room, or boarding place, without special permission from the President.
18. No student will be permitted to leave the school, during the session, without an express request from the parent or guardian, made to the President, and with the consent of the Faculty.
19. Any student who, without just cause, shall fail to attend the examinations, will be considered as under censure.
20. Permission to be absent from any exercise must be obtained, if possible, before the absence occurs.
21. No student will be permitted to leave any class without the consent of the Faculty.
22. The Ladies and Gentlemen must not visit each others' apartments, walk or ride together, without permission; nor converse together from the windows.
23. Students from the neighborhood will not be permitted to visit home at such times as will interfere with the regular exercises of the school.
24. Any offending student may be punished, according to the nature of the offence, by private or public reproof, suspension, dismissal or expulsion.
25. Students dismissed or expelled, must leave the premises at once.
26. None but students can attend the Society meetings, unless by express permission of the Faculty.
27. No special meeting of the students shall be held at any time, without permission of the President.
28. Any temporary prudential regulation for the government of the school that the Faculty may see fit to adopt, shall be equally binding with these By-Laws.

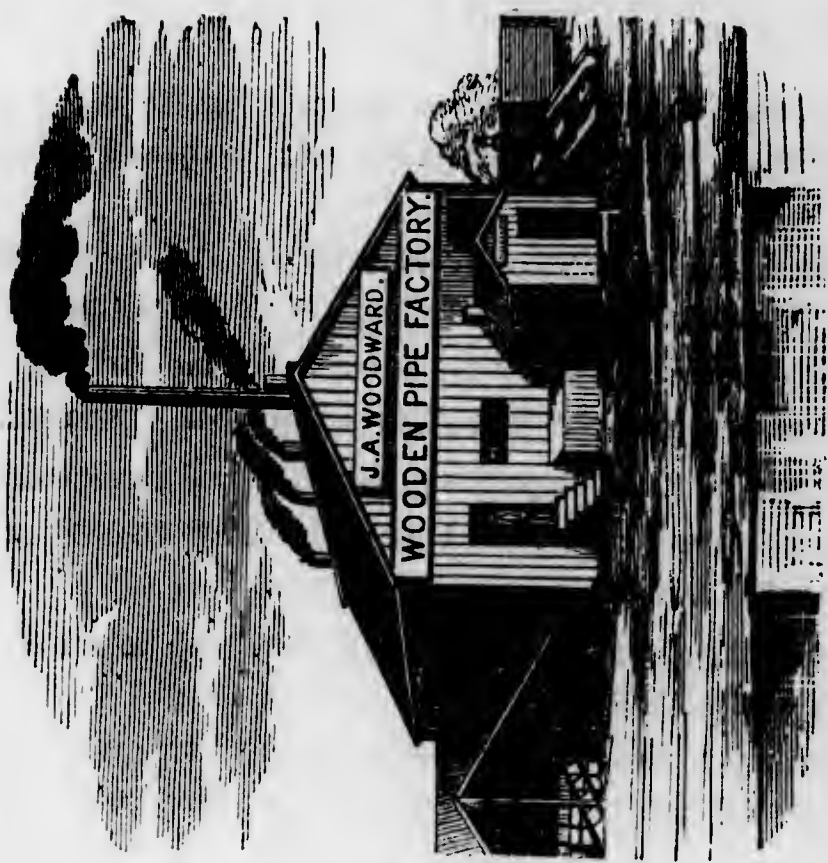
WYCKOFF'S PATENT
WOODEN WATER AND GAS PIPE.

OVER FORTY MILES SOLD
WITHIN TWO YEARS.

CIRCULARS SENT FREE,
To all applicants.

SEND FOR ONE,
Before using any other kind of Pipe.

All sizes, and at all prices, in stock at
all times; if not, will be made
to order.



Conceded by those using it most to be
The Cheapest and best Pipe
IN USE.
Particularly adapted to the use of
Water, Gas, Rail Road & Mining
COMPANIES.
A specialty made of
FARMERS' PIPE,
For supplying their houses and barn
with pure soft water from
their springs.

Manufactured by J. A. WOODWARD, Williamsport, Pa.

A. Eschenbach,
PRACTICAL PIANO MAKER AND TUNER,
And Dealer in all kinds of
Musical Instruments and Fancy Goods,
No. 17 W. THIRD ST., WILLIAMSPORT, PA.

JOHN CRAMER & SON,
Merchant Tailors.
CLOTHS, CASSIMERES & VESTINGS,
KEPT CONSTANTLY ON HAND.
No. 30 East Fourth Street, Williamsport. Pa.

D. TRAINER & SON,
WHOLESALE & RETAIL DEALERS IN
Hats, Caps, Furs AND Straw Goods,
No. 27 WEST THIRD STREET,
D. TRAINER, } WILLIAMSPORT, PA.
G. F. TRAINER. }

EMPIRE STORE,
No. 74 Market Street,
SHANBACHER & HERRING,
Merchant Tailors,
AND DEALERS IN
Ready-Made Clothing, Gents' Furnishing Goods.
WILLIAMSPORT, PA.

L. McDOWELL,

No. 24. E. Third St., Williamsport, Pa.
Wholesale and Retail Dealer in

Building & General Hardware,

FARMING IMPLEMENTS, &c., &c.
IRON, BELTING, SADDLERY & COACH-WARE.

A WORD TO THE AFFLICTED.

**HAGENBUCH'S
PECTORAL
COUGH SYRUP.**

This Syrup gives instant relief in all affections of the LUNGS and THROAT, such as COUGHS, COLDS, ASTHMA, CROUP, BRONCHITIS, HOARSENESS or TIGHTNESS of the CHEST. By its action as a stimulating EXPECTORANT and TONIC, it cures DYSPEPSIA, it produces appetite, stimulates the system and builds up the failing strength while it drives from the system and lungs the seeds of consumption. Try but a single bottle. And for all aches and pains use

Dr. Allen's Green Mountain Oil, Lightning Cure,

Prepared only by *G. M. Hagenbuch*

DRUGGIST,
WILLIAMSPORT, PENN'A.

D. R. JAMESON,

DEALER IN

BOOTS & SHOES,

No. 16 EAST THIRD ST.,

WILLIAMSPORT, PENNSYLVANIA.

GLESS & NIEMEYER,

BOOK BINDERS

AND

Manufacturers of Blank & Memorandum Books.

74 W. FOURTH STREET.

WILLIAMSPORT, PA.

WRIGHT & JEWELL,

Wholesale and Retail Dealers in

Groceries & Provisions,

FLOUR, FEED, WOOD & WILLOW-WARE,

Cor. 3rd & William Sts., W'msport, Pa.

L. L. STEARNS,

Dealer in Staple and Fancy

Dry Goods, Carpets, Oil-Cloths, Groceries,



No. 1 W. Third Street, Williamsport, Penn'a.

AGENT FOR THE HOWE SEWING MACHINES.

L. McDOWELL,

No. 24. E. Third St., Williamsport, Pa.

Wholesale and Retail Dealer in

Building & General Hardware,

FARMING IMPLEMENTS, &c., &c.

IRON, BELTING, SADDLERY & COACH-WARE.

A WORD TO THE AFFLICTED.

**HAGENBUCH'S
PECTORAL**

COUGH SYRUP.

This Syrup gives instant relief in all affections of the LUNGS and THROAT, such as COUGHS, COLDS, ASTHMA, CROUP, BRONCHITIS, HOARSENESS or TIGHTNESS of the CHEST. By its action as a stimulating EXPECTORANT and TONIC, it cures DYSPEPSIA, it produces appetite, stimulates the system and builds up the failing strength while it drives from the system and lungs the seeds of consumption. Try but a single bottle. And for all aches and pains use

Dr. Allen's Green Mountain Oil, Lightning Cure,

Prepared only by *C. H. Hagenbuch*

DRUGGIST,
WILLIAMSPORT, PENN'A.

D. R. JAMESON,

DEALER IN

BOOTS AND SHOES,

No. 16 EAST THIRD ST.,

WILLIAMSPORT, - - PENNSYLVANIA.

SISS & NIEMEYER,

BOOK BINDERS

AND

Manufacturers of Blank & Memorandum Books,

74 W. FOURTH STREET.

WILLIAMSPORT, PA.

WRIGHT & JEWELL,

Wholesale and Retail Dealers in

Groceries & Provisions,

FLOUR, FEED, WOOD & WILLOW-WARE,

Cor. 3rd & William Sts., W'msport, Pa.

L. L. STEARNS,

Dealer in Staple and Fancy

Dry Goods, Carpets, Groceries,
Oil-Cloths
&c., &c., &c.

No. 1 W. Third Street, Williamsport, Penn'a.

AGENT FOR THE HOWE SEWING MACHINES.