

Historic, archived document

Do not assume content reflects current scientific knowledge, policies, or practices.



Old White Pines from the Hicks Nurseries on the property of Mr. Fred Stadelman, Great Neck. These were planted for their beauty, not for any utilitarian purpose. Many people want pines to enjoy all summer and winter. Mr. Stadelman writes as follows:
"I cannot help writing to let you know how delighted we are with the white pines. Your men handled them with marvelous ease and skill."

HICKS NURSERIES
WESTBURY, LONG ISLAND, NEW YORK
1925

FOREWORD

YOU and we are interested in the best development of your country place.

The cost of planting is low, you can get a collection of fruit, flowers and trees for five, ten or twenty dollars. A visit to Hicks Nurseries for two berry bushes, a grape vine or a hardy flower for thirty cents may thus be your best investment for food or beauty. A doctor said, "I get more fun coming to your nursery, getting an apple tree and planting it than I would having you do the whole place."

The sign, "Welcome to Hicks Nurseries," means you are welcome to drive or walk around any time. There are eight miles of roads. A former catalogue said, "Roam around, pick a flower here and a twig there to get acquainted, but do not pick half a \$10.00 rhododendron."

Another catalogue said, "Every family on quarter of an acre, best for children, best for business." How, can be learned by looking around the country, at the Hicks Nurseries, and by this and some of the other Hicks catalogues.

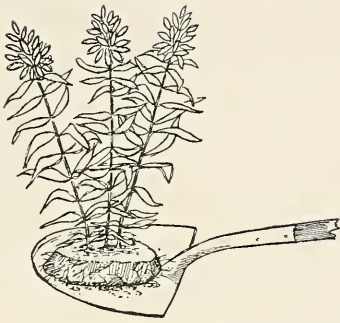
See the name on the stake, look up the price in this catalogue, pick out the plants you want, see a salesman or foreman, arrange to have it put in your car or delivered.

Arrange to have a salesman call and take your order or help you stake or sketch the arrangement of your garden and orchard.

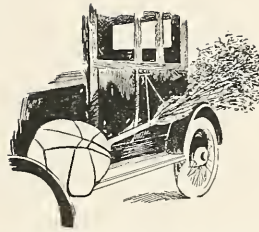
HICKS NURSERIES

WESTBURY, L. I.

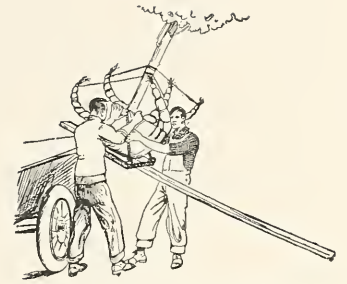
Telephone 68, Westbury



Almost everything comes up with a clump of dirt on the roots. It can be wrapped in paper, burlap, paper pot, strawberry box or put direct into the large boxes in your car. Bring some fruit boxes and fiber-board boxes and get more for your money.



Bundle of fruit trees with the roots in mud, straw and burlap.



Tree is loaded on a truck by roller skids and laid down to go under wires. It is unloaded by standing it up and sliding it off on your grounds. It may weigh five or ten tons. The Hicks tree-moving crews handle it as easily as a safe is put into a bank. For shade trees 8 to 30 years old this way gives you the most for your investment any time in spring, summer or autumn.

GUARANTEE

We guarantee every plant from our nursery, and give new ones for those that do not grow satisfactorily. The cost of planting and transportation of replaced trees is borne by the purchaser.

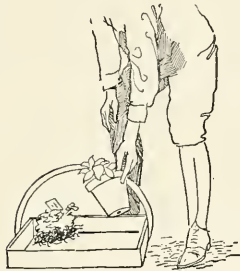
PRICES, DELIVERY, PACKING

The prices in this list are for trees and plants dug and loaded at our nurseries. On request we shall be pleased to estimate the cost of delivery or the cost of freight or express. Five plants are sold at the 10 rate and 50 at the 100 rate.

All packing will be charged for at cost.

SUMMER PLANTING

Summer planting is practical with over 80% of different kinds and sizes of trees from the Hicks Nurseries. The fun of seeing, wanting, having and enjoying is yours without remembering until next season. Summer planting is economical.



You can carry some in pots and some have a fibrous root system which will hold a clump of soil without wrapping. This is particularly true of Rhododendrons and Azaleas, of which you can see tens of thousands of little plants just right for economical planting in summer.



ARROWWOOD

Big shrubs like this are available by the thousands in the summer. They are broad and bushy because they were cut back a few years ago. They hold a big ball of peaty soil. Give them a drink occasionally and you save time and money and have plants that will harmonize because they are native; economical because you pay only the collecting and transplanting. Price per plant may be higher but the number of plants and years of waiting make them cheapest for height and spread.



It is a simple matter to tie the roots in burlap or sew them, as opposite. Another system is Hicks platforms and canvas that will hold balls of earth sixteen feet in diameter and three feet deep.



Large evergreen prepared for planting any time of the year. Some are root-pruned several years previous to make more small feeding roots in the ball.



Shrubs in the nursery can have a ball of earth sewed in burlap.



Scotch Pine with laurel and rhododendron underneath. View in the garden of Mr. Vincent Park, Great Neck, L. I. The trees and shrubs from Hicks Nurseries were used to enclose this lovely garden. A stroll around the place shows new pictures at frequent intervals.

Shade Trees

MAPLES are broad shouldered trees, the Norway and Red being round headed, with the Sugar upright ovate. They make cool, shaded lawns, walks, playgrounds, and create the setting for a new house. For time-saving Norway and Red Maples 20 to 35 years old, see *Home Landscapes* stock list, and come and see the trees.



Norway Maple. It is fun to pick them out.

Norway Maple—*Acer platanoides*

Height	Diameter	Each
14-16 feet	2½ inches	\$8.00
16-18 feet	3 inches	12.00
18-22 feet	5 inches	45.00

Sugar Maple—*Acer saccharum*

Height	Diameter	Each
10-12 feet	1½ inches	\$2.50
12-14 feet	2 inches	6.00
18-20 feet	4 inches	40.00

DOGWOOD. Description can do little to lead people to plant Dogwood. To those who know Dogwood, no description is adequate.

White Flowering Dogwood—*Cornus florida*

Height	Each
3-4 feet	\$3.00
5-6 feet	4.00
6-8 feet	6.00

Japanese Dogwood—*Cornus kousa*—Blooms a month later.

Height	Each
1-2 feet	\$0.75
2-3 feet	1.00



Tall, old beech trees from the Hicks Nurseries make an effective screen even in winter, with bright russet leaves. Residence of Mr. B. Blackwell, Plandome, L. I.



Hornbeam, beech-like trees for a pleached alley.

BEECH. Lighten up your woodland with a grove of Beech. The repose and dignity of old Beech can be yours in these trees. Make a grove of low branched trees to shut out the street. A hedge will divide one out-door room from another. Mix them with pine, hemlock, oak, and dogwood. Hedges of beech and hornbeam trimmed for vertical walls 16 to 20 feet high and as many years old are ready to wall your garden, laundry yard or formal garden.

American Beech—*Fagus americana*

Height	Each
3-4 feet	\$4.00
4-5 feet	5.00
5-6 feet	8.00
6-8 feet	10.00

English Beech—*Fagus sylvatica*

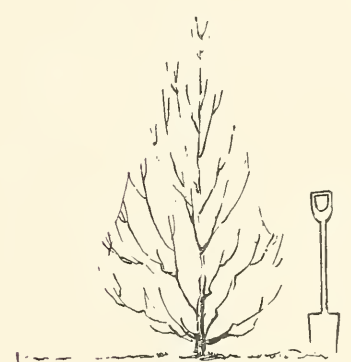
Height	Each
4-5 feet	\$5.00
6-8 feet	10.00
8-10 feet	20.00

Purple Beech—*Fagus sylvatica purpurea*

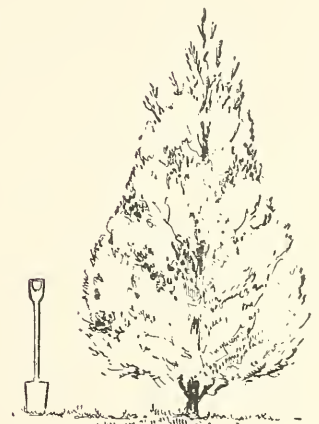
Height	Each
4-5 feet	\$10.00
5-6 feet	18.00
6-8 feet	20.00

FLOWERING CRAB APPLE. *Malus.* We all love the old apple trees for pink blossoms, fragrant perfume, and broad, hovering branches. They will make beautiful domes eight feet high and twelve feet broad in half a dozen years. Birds and you can eat the frozen fruit. Red vein crab has red foliage like the blood leaf Japanese maple.

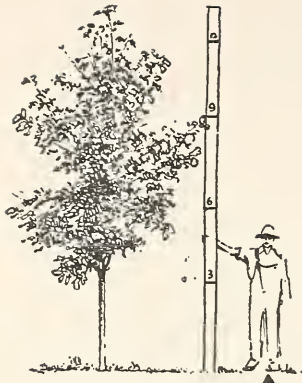
Height	Each
3-5 feet	\$2.50



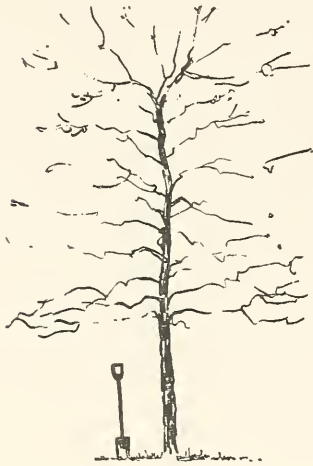
American Beech, grown as perfectly as possible.



English Beech—Nine feet.



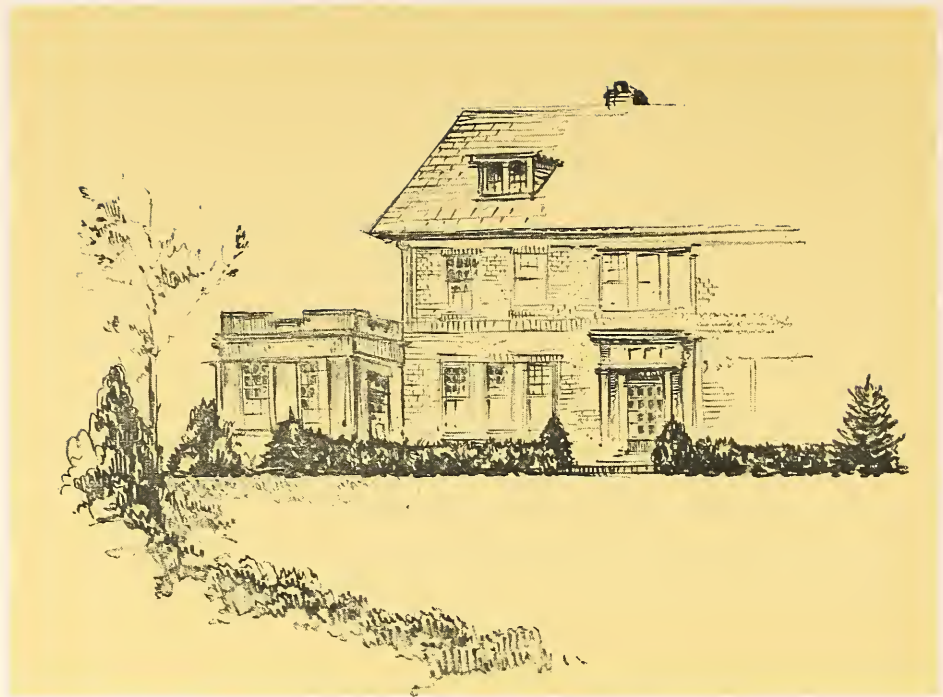
Oak trees fourteen years old. Such trees delivered with ball of earth give immediate results at moderate cost.



Oak trees, twenty years old, give cool shade and dignified landscape.



Linden, showing broad, shady top. These and other shade trees can be planted all summer.



Simplicity is not carried to the extreme in this foundation of Japanese Yew, flat form, at the edge of the pavement terrace, and the taller Japanese Yew and other evergreens at the corners. Both the house and the planting show good taste in architecture. Complexity, confusion and too much contrast is carried to the extreme around many houses.

OAKS. The highest beauty and usefulness of a region is in what nature has put there. Oaks predominate on Long Island. You enthuse in May for the pale gray of the Oak leaves when they are the size of a squirrel's ear, and again in autumn for the blaze of scarlet and crimson. Your oak enthusiasm can revel in the collection at the Hicks Nurseries. Oaks 20 to 50 years old are waiting your selection.

Scarlet Oak—*Quercus coccinea*

Height	Diameter	Each
10 feet	1½ inches	\$6.00
12-14 feet	2 inches	12.00
14-16 feet	2½ inches	18.00

Pin Oak—*Quercus palustris*

Height	Diameter	Each
12-14 feet	2 inches	\$8.00
14-16 feet	2½ inches	9.00
16-20 feet	3 inches	15.00
14-20 feet	4 inches	30.00

Red Oak—*Quercus rubra*

Height	Diameter	Each
8-10 feet	2½ inches	\$3.00
12-16 feet	2½ inches	18.00

LINDENS fulfill the desire for the beauty of symmetry and repose. They are calm, well fed, dark green. The time-saving advantage to you is apparent in these trees, which are fifteen or twenty-five years old. See Stock List and *Home Landscapes*.

Small-leaved Linden—*Tilia cordata*

Height	Diameter	Each
10 feet	2 inches	\$6.00
14-16 feet	4 inches	40.00
16-20 feet	5 inches	60.00

Silver Linden—*Tilia tomentosa*

Height	Diameter	Each
18-22 feet	5 inches	\$50.00
20-24 feet	6 inches	75.00



The foundation planting at the residence of Mr. Pelham, Great Neck. Japanese Yew, Pfitzers Juniper, Japanese Spurge make a dignified composition that is good the year round, and will not soon close the windows. The path border is dwarf Japanese Yew.

Evergreens

COME and see the greenhouses, irrigated and shaded beds and the acres of baby evergreens. Buy them at 50 cents and have the fun of growing the common, the beautiful, the new and the rare. We have greatly extended the list of good plants available.

Firs are Christmas trees, tall and spiry, with balsam fragrance. A fundamental idea of a garden is enclosure. These tall trees can be part of your enclosing wall of green. For a community Christmas tree there are firs and spruce 20 feet high.

NIKKO Fir—*Abies brachyphylla*

Height	Each
10-12 feet	\$50.00

White Fir—*Abies concolor*—Blue-green foliage, very broad and solid trees.

Height	Each
3 feet	\$6.00
5 feet	12.00
8-10 feet	40.00

JAPANESE CYPRESS are not expensive and you can buy them in any size. Small plants for small gardens, and green plants for all winter landscape are now very popular. Foundation planting in the right way should use increasing quantities of the dark green and dwarf kinds.

Dwarf Retinospora—*Chamaecyparis obtusa gracilis nana*—Heirlooms of the Japanese.

Height	Each
6-10 inches	\$1.00

Hinoki Cypress—*Chamaecyparis obtusa magnifica*—Dark green, dense, slow.

Height	Each
1½-2 feet	\$3.00



White Fir are broad and solid, blue green in color.



Plume Retinospora



Moss Retinispora.



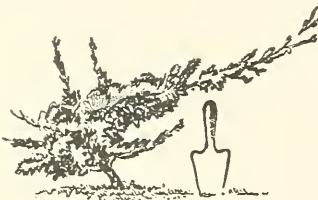
Needle Juniper.



Pfitzers Juniper.



Meyers Juniper. Picturesque, irregular low growth of blue and red tinged foliage.



Prostrate Juniper.



A little cottage on a little plot with a narrow space between the house and the drive can be as beautiful as if larger. Use narrow and dwarf trees and cover plants. Tuck in flowers.

Plume Retinispora—*Chamaecyparis pisifera plumosa*—Feathery bright green.

Height	Each
1½-2 feet	\$2.25

Golden Plume Retinispora—*Chamaecyparis pisifera plumosa aurea*—Bright yellow.

Height	Each
1½-2 feet	\$2.25

Moss Retinispora—*Chamaecyparis pisifera squarrosa*—Bright blue, charming.

Height	Each
1½-2 feet	2.50

JUNIPERS. You can classify the Junipers as exclamation points, cushions, and the carpet form. The exclamation points are the Red Cedar, Swedish Juniper, Needle Juniper, and *Juniperus stricta glauca*. The cushion shaped are the Common Juniper and Pfitzers Juniper. The carpet are the prostrate and trailing forms. This list is a few of the many hardy, beautiful and little known kinds you will find in the Hicks Nurseries.

Pfitzers Juniper—*Juniperus chinensis pfitzeriana*.

Height	Each
1½ feet spread	\$3.00

Common Juniper—*Juniperus communis*.

Height	Each
1½ feet spread	\$3.00

Meyers Juniper—*Juniperus squamata meyeri*—Blue, tinged with red.

Height	Each
1-1½ feet	\$3.00

Needle Juniper—*Juniperus rigida*—Use as a point at the house foundation.

Height	Each
3-4 feet	\$5.00

Spiny Greek Juniper—*Juniperus stricta glauca*.

Height	Each
8-12 inches	\$1.50

Red Cedar—*Juniperus virginiana*, 1 to 30 feet. Write for prices.



Let the foundation show in places, is the principle of the landscape architect, E. G. Davis, Ithaca, N. Y. Residence of Mr. George B. Hedges, Westbury.

SPRUCE, like the firs, have spiry tops. It is best to come and look at them, as names and descriptions are not equal to studying the many colors, blue and green, and sizes.

Douglas Spruce—*Pseudotsuga douglasi*. A good Christmas tree.

Height	Each
2 feet	\$4.00
3 feet	6.00
4 feet	10.00
6-8 feet	15.00

PINES should be most extensively planted of all evergreens on Long Island. They are native on Long Island, and they are more certain to reach a happy old age. If you know trees, you are undoubtedly a pine enthusiast, and we will help you all we can. Car loads and barge loads 15 to 30 years old are available.

Korean Pine—*Pinus koraiensis*.

Height	Each
2-3 feet	\$5.00

Mugho Pine—*Pinus montana mughus*. Cushion shape.

	Each
1-1½ feet spread	\$4.00
1½-2 feet spread	5.00

Austrian Pine—*Pinus nigra austriaca*. Best for seashore.

Height	Each
8-10 feet	\$50.00
10-12 feet	65.00

Macedonian Pine—*Pinus peuce*.

Height	Each
5-6 feet	\$8.00
6-7 feet	10.00



Scotch Pine give most cubic feet of immediate screen for the investment. Blue green color.



White Pine twenty-four feet high, with laurel and rhododendron under.



Red Pine, six to eight feet high, are very solid, dark green, and hardy.



Japanese Yew, flat form. One of the best low dark green evergreens.



Dwarf Japanese Yew.



Hicks Japanese Yew.



American Arborvitae.

Red Pine—*Pinus resinosa*. Dark green and solid.

Height	Each
6-8 feet	\$25.00
8-10 feet	60.00

White Pine—*Pinus strobus*. Best for screens.

Height	Each
4-6 feet	\$6.00
6-8 feet	12.00
8-10 feet	18.00
10-12 feet	30.00
12-14 feet	40.00

Scotch Pine—*Pinus sylvestris*.

Height	Each
8-10 feet	\$25.00
12-14 feet	50.00

YEW. The beauty of the Yew is well known through the English Yew. Unfortunately, equable climate and dull winter sun of England do not permit the English Yew to be hardy here. The Japanese Yew is hardy, however, and similar in appearance, so makes a good substitute, even to its bright red berries.

Japanese Yew—*Taxus cuspidata-capitata* (upright) form—Shaped like a Spruce or Fir.

Length	Each
1-1½ feet	\$2.50
2-3 feet	5.00

Japanese Yew—*Taxus cuspidata* (flat form).

Height	Each
12 inches by 12 inches	\$2.00
1½ feet by 1½ feet	5.00
4 feet by 6-8 feet	50.00-100.00

Dwarf Japanese Yew—*Taxus cuspidata nana brevifolia*—Get several for your evergreen garden and for the foundation planting.

Height	Each
8-10 inches	\$3.00
1 foot by 1½ feet	6.00

Hicks Japanese Yew—*Taxus media hicksii*.

Height	Each
1-1½ feet	\$5.00
2 feet	10.00

ARBORVITAE is a fast growing plant, has graceful foliage of a good green color in summer, and dull green tinged with brown in winter.

American Arborvitae—*Thuja occidentalis*—For foundation planting.

Height	Each
3-4 feet	\$4.00

Booth's Arborvitae—*Thuja occidentalis boothii*—A compact dark green globe for foundation planting and low hedges to be used for garden border.

Height	Each
1-1½ feet	\$2.50

Pyramidal Douglas Arborvitae—*Thuja occ. Douglasi pyramidalis*.

Height	Each
1½-2 feet	\$2.00

Siberian Arborvitae—*Thuja occ. warreana*.

Height	Each
1-1½ feet	\$2.50
2-3 feet	3.50

HEMLOCK is a graceful dark green tree that likes the cool north slopes of the mountains and shelter of other trees.

Height	Each
2-3 feet	\$4.00
3-4 feet	6.00
6 feet	15.00

Hemlock Hedges. 600 feet long, 16 x 16 feet, 50 years, 400 feet long, 8 x 6 feet.

Shrubs

FOR fragrance and beauty of flower, Azaleas, Lilacs, Forsythia, Weigelia, and Deutzia. Strong growing plants to make mass foliage are Blueberry, Viburnums, Dogwood, Syringa, and Honeysuckle. Berry-bearing shrubs for fall and winter are Chokeberries, Viburnums, Honeysuckle, Dogwood, Barberries, Snowberries, and a host of others. Pick branches of foliage and flowers to study. You will find it the cheapest and in many respects the best way to develop the beauty and seclusion of your country home.

Aronia arbutifolia—Red Chokeberry. Feeds the birds in late winter.
Height, 2-3 feet Each, \$1.00 Per Ten, \$9.00

Aronia melanocarpa—Black chokeberry—Plant by the thousand.
Height, 2-3 feet Each, \$0.75 Per Ten, \$6.50

Azalea hinodigiri—Hinodigiri Azalea—Brilliant scarlet in early May.
Height, 8-10 inches Each, \$2.50

Azalea japonica—Lemon yellow.
Height, 12-18 inches Each, \$2.50

Azalea kaempferi—Torch Azalea—Orange—Plant in the woods.
Height, 1-1½ feet Each, \$1.25

Azalea nudiflora—Pinxterbloom—Wild pink azaleas are widely scattered over Long Island on shady cool slopes.

Height, 2 feet Each, \$1.50

Azalea vaseyi—Pink-shell Azalea—Buy little ones in bloom.
Height, 1-1½ feet Each, \$1.25

Azalea viscosa—Swamp Azalea—Sturdy shrubs with big balls of earth. We can supply collected plants by the thousands. Tell us length and height of border you want for estimate. White tinged with pink, June and July.

Height, 2-3 feet Each, \$1.50

Berberis thunbergi—Japanese Barberry.
Height, 1-1½ feet . Each, \$0.35 . Per Ten, \$3.00 . Per Hundred, \$20.00

Clethra alnifolia—Summer Sweet—With the swamp azalea available in the same way.

Height, 2-3 feet Each, \$0.75 Per Ten, \$6.50

Cornus mas—Cornelian Cherry—Bright yellow, before forsythia,
Height, 2-3 feet Each, \$0.75 Per Ten, \$6.50

Deutzia magnifica—A sturdy shrub soon six feet, white, May, used for hedges and screens.

Height, 2-3 feet Each, \$0.75 Per Ten, \$6.50

Euonymus alatus—Winged Euonymous.
Height, 2-3 feet Each, \$1.00

Forsythia fortunei—Golden Bell—The first big show of spring, used for wild banks and tall screens.

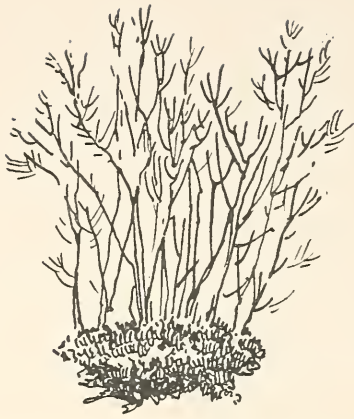
Height, 3-4 feet Each, \$0.75 Per Ten, \$6.50

Hamamelis virginiana—Common Witch Hazel—Yellow, December.
Height, 2-3 feet Each, \$0.75 Per Ten, \$6.50

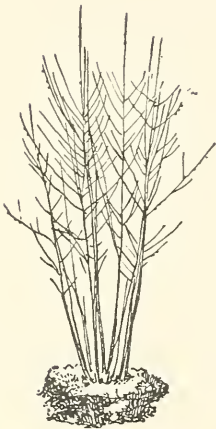
Hibiscus syriacus—Rose of Sharon—Hollyhock-like flowers, pink and white, July.

Height, 2-3 feet Each, \$0.75 Per Ten, \$6.50

Hydrangea arborescens—Hills of Snow—use for border or hedge.
Height, 1-2 feet Each, \$0.75 Per Ten, \$6.50



High Bush Blueberry. Wide heavy balls of earth and big broad shouldered shrubs that give the most in time saving foliage. Beautiful autumn foliage. Sturdy oak like branches. Use truckloads for tall screening, hedges, and underplanting. Plant all summer.



Arrowwood. Plants offered are now bigger than this picture, six to seven feet high, and nearly as wide. The big ball of earth on the roots makes them economical because you do not have to wait several years. See page 3.

- Hydrangea paniculata grandiflora—Hydrangea Peegee.
 Height, 2-3 feet Each, \$0.75 Per Ten, \$6.50
- Ilex verticillata—Common Winterberry—Hollyberries all winter.
 Height, 2-3 feet Each, \$0.50 Per Ten, \$4.50
- Ligustrum ovalifolium—California Privet—For hedges, plant one foot apart.
 Height, 2-3 feet . Each, \$0.25 . . Per Ten, \$2.00 . . Per Hundred, \$15.00
 3 year bushy.
- Lonicera tatarica—Tartarian Honeysuckle—Fragrant, pink and white, May, currant-like fruit for the birds in July.
 Height, 2-3 feet Each, \$0.75 Per Ten, \$6.50
- Philadelphus coronarius—Sweet Mock Orange—The memory of this should lead you to plant in quantity for fragrance and for tall screens.
 Height, 2-3 feet Each, \$0.75 Per Ten, \$6.50
- Prunus triloba—Double Flowering Plum—Pink roses in early May.
 Height, 2-3 feet Each, \$1.50 Per Ten, \$12.50
- Rhodotypos kerrioides—Jet Bead.
 Height, 2-3 feet Each, \$0.75 Per Ten, \$6.50
- Spiraea thunbergi—Thunberg Spirea.
 Height, 1½-2 feet Each, \$0.50 Per Ten, \$4.50
- Spiraea van houtei—Van Houtei Spirea—Elmshaped snowbanks, eight feet for tall borders, at the corners of the house and hedges.
 Height, 2-3 feet Each, \$0.75 Per Ten, \$6.50
- Symplocos paniculata—Asiatic Sweetleaf—Robins egg blue berries.
 Height, 2-3 feet Each, \$2.00
- Symphoricarpos racemosus—Snowberry. Big, white, September.
 Height, 2-3 feet Each, \$0.50 Per Ten, \$4.50
- Symphoricarpos vulgaris—Coralberry—A tangle, spreading like strawberries for borders and banks.
 Height, 1½-2 feet Each, \$0.50 Per Ten, \$4.50
- Syringa vulgaris, Common Lilac—You remember the fragrance.
 Height, 2-3 feet Each, \$1.75 Per Ten, \$15.00
- Vaccinium corymbosum—High bush blueberry—The best food and the best big shrub available in lots of 10,000, with big balls of earth.
 Height, 2-3 feet Each, \$1.50 Per Ten, \$12.50
- Viburnum dentatum—Arrowwood—Available, like the last, up to eight feet; use both for economy, and beauty and privacy.
 Height, 2-3 feet Each, \$0.75 Per Ten, \$6.50
- Viburnum dilitatum—Japanese Bush Cranberry—Bright red all winter, edible.
 Height, 2-3 feet Each, \$1.00 Per Ten, \$9.00
- Weigelia rosea—Pink bells in rhododendron time.
 Height, 3-4 feet Each, \$0.75 Per Ten, \$6.50

Broad Leaved Evergreens

WITH broad leaved evergreens Long Island has its greatest opportunity and greatest need for beautifying the landscape. It is especially favorable to broad leaved evergreens, because the climate near the ocean is moist. Where it is protected from wind, as around the house foundation, under your shrubs and trees and in the woods, they are sure to be happy and beautiful. The soil that is open and porous, as our prevailing sandy soil, suits them. The plants themselves tell you how to arrange, how to tuck leaves around them. Come and see the following and many others. You can practice the sport and art of gardening all summer, for they come up with a little ball of felt-like roots. Economy is in these little plants; you had best get them by the hundred, with a few to bloom this year. Redecorate your landscape, which may be dull and commonplace.

Berberis verruculosa—Warty Barberry—New from China—red, bronze and silver, for foundation planting, yellow flowers.

Height, 6-8 inches Each, \$1.00

Calluna—Scotch Heather in variety—Pink and white bells, green or red foliage, plant it near the shore or on sandy hills. Feather-down your shrubs and evergreens in the flower garden and rock garden.

Height, 3-6 inches Each, \$0.75

Cotoneaster horizontalis—Rock Cotoneaster—Bright red apple fruits.

3 in pots Each, \$0.75

Euonymus—Wintercreepers in variety—Carpet the woods, use as a hardy substitute for English Ivy.

Height, 6-12 inches Each, \$0.75

Ilex crenata—Japanese Holly—Box-like foliage with black berries.

Height, 1-1½ feet Each, \$1.50

Ilex glabra—Inkberry Holly—Native on Long Island, a rounded bush with black berries.

Height, 8-12 inches Each, \$1.25

Ilex opaca—American Holly—Mix them in your woods, shrub border and foundation.

Height, 2-3 feet Each, \$4.00

Kalmia latifolia—Mountain Laurel—Sweeps of pink in May, beautiful foliage all the year. Plant by the thousand any time.

Height, 1½-2 feet Each, \$2.50

Pachistima canbyi—Mountain Lover—Bronze red mat, six inches.

Height, 6 inches Each, \$0.75

Pachysandra terminalis—Japanese Pachysandra—Cover plant with laurel-like foliage.

Height	Each	Per Ten	Per Hundred
3-5 inches	\$0.35	\$2.00	\$18.00

Rhododendron—Cawtawbiense Hybrids—Select little seedlings, some in flower, at fifty cents up.

Height, 2-3 feet Each, \$12.00

Rhododendron maximum—Rosebay Rhododendron.

Height, 1½-2 feet Each, \$3.00

Vince minor—Common Periwinkle (Myrtle) Evergreen cover plant.

Height	Each	Per Ten	Per Hundred
3-inches	\$0.30	\$2.50	\$20.00

Rare Plants

AS you have noted in this catalogue, Hicks Nurseries is not the ordinary list but gives you better service in time-saving plants, native plants that are sure to be happy, and in new, rare and beautiful plants. Cuts, sketches and color plates can not convey their beauty adequately. The nursery is open, you can roam around and get acquainted, whether in the long daylight-saving evenings or on a holiday. Many are not listed.

Corylus colurna—Tree Hazel—From a tree in Highland Park, Rochester, 25 feet high.

Height, 3 feet Each, \$2.00

The cotoneasters are a new group of shrubs from China giving the joy of the apple, the hawthorn and the spirea, for they are one family. Graceful sprays of white flowers in May and bright fruits in fall and winter. Good foliage and vigorous growth.

Cotoneaster acutifolia—Peking cotoneaster—Black fruit, grows 12 feet.

Height	Each
3 feet	\$1.00

We refer to the following, and many others.

MRS. H. BACHMAN,
Douglas Manor

MRS. E. W. MARLOW
Douglaston

DR. P. G. COLE, Forest Hills
Landscape Architects,

Olmsted Bros.
MR. A. H. VOSE . . . Forest Hills

MR. H. BENDEL . . . Great Neck

MRS. W. D. CAMPBELL, Great Neck

MR. CHRYSLER . . . Great Neck

MR. F. C. NAUGHTON, Great Neck

MRS. A. PELHAM . . . Great Neck

MR. A. RICHARDSON, Great Neck

MR. C. P. TOWNSEND, Great Neck

MR. W. F. VREELAND, Great Neck

MRS. R. D. WYCKOFF, Great Neck
Landscape Architect,

Clarence Fowler

THE TOWERS, Jackson Heights,
Landscape Architect,

Noel Chamberlin

MRS. J. S. LOVERING, Hewlett,
Landscape Architects,

Movius & Sadler

MRS. H. ESK MOLLER, Hewlett,
Landscape Architect,

Noel Chamberlin

MISS J. J. SMITH . . . Hewlett

MR. WILFORD TAUPIER . Hewlett

HEWLETT BAY CO. . . . Hewlett

MR. SLOAN Hewlett

MR. THOMAS ROULSTON, Halesite

MRS. C. C. STELL Halesite

LAWYER'S BUILDING . . Mineola

MRS. R. B. ANDERSON,
Port Washington

MRS. A. BAUER, Port Washington

MRS. FAY . . . Port Washington

MRS. E. G. HUBBARD
Port Washington

Cotoneaster dielsiana—Diels cotoneaster—6 feet, crimson autumn foliage.

Height, 2 feet Each, \$1.50

Cotoneaster faveolata—Pink flowers, scarlet autumn foliage.

Height, 2-3 feet Each, \$1.50

Cotoneaster multiflora var. calocarpa—Showy flowers, large red fruit.

Height, 2-3 feet Each, \$3.00

Cotoneaster nitens—Purplish black fruit.

Height, 1-1½ feet Each, \$1.00

Cotoneaster rotundifolia—Round Leaf Cotoneaster—Bright red fruit.

Height, 1½-2 feet Each, \$1.50

Cotoneaster simonsi—Simons Cotoneaster—4 feet, pink-white flowers, reddish fruit, dark crimson autumn foliage.

Height, 2-3 feet Each, \$1.00

Cotoneaster zabeli—Zabels Cotoneaster—Flowers pink, fruit red, 6 feet, bright yellow autumn.

Height, 2-3 feet Each, \$1.50

Enkianthus campanulatus—Redvein Enkianthus—Like highbush huckleberry, pink bells in May.

Height, 1-2 feet Each, \$1.25

Rosa hugonis—Father Hugos Rose—Mound of golden long before other roses.

2 years Each, \$2.50

Teucrium chamaedrys—Chamaedrys Germander—An evergreen mat with aromatic foliage for borders, banks, and rock garden. Pink flowers.

Height, 3 inches Each, \$0.50

Vines

YOU may say "Our place is all finished: There is no room." You can add vines to clamber over the trees and shrubs, to carpet the ground and hold the mulch of leaves, to hold a bank or just for their own beauty.

Bower Actinidia, Actinidia arguta—Goose-berry like fruit and orange blossoms. Virginia creeper with five pointed leaves has brilliant red leaves with the first Sumac. Clematis paniculata, Sweet Autumn Clematis—A Milkyway in August. Celastrus orbiculata, Japanese Bittersweet—A drift of orange all winter. Jasminum nudiflorum, Winter Jasmine—Golden stars after a warm week. Wisteria—Is available by the hundred for a bluff. Mr. Louis C. Tiffany, Cold Spring Harbor, has decorated his woodland with it.

The prices on vines are \$0.50 to \$1.00 each, \$4.50 to \$6.50 per ten.

Hardy Garden Flowers

HARDY garden flowers you can plant and enjoy immediately. The pleasure of a trip to the nursery is finding the colors and plants you like. When you see your neighbor's garden planted with primroses, iris, phlox, chrysanthemums and asters come to the nursery and you can plant them the same day or the next. Your ideas for color harmony can first be tried by picking flowers in the Hicks Nurseries. Then dig your plants and place them together. Country shopping gives many hours of pleasure to many people.

Unless otherwise noted in *Home Landscapes* and Stock List, all varieties are 30 cents each, \$2.50 per ten, \$20.00 per hundred. A few extra sized clumps usually divided at higher rates.

This condensed list contains but few of the many varieties offered. Achillea parmica—The Pearl—Whitebuttons all summer, sod of green, for borders.

Aconitum—Monkshood—Tall purple in late autumn, rare.
Althea—Hollyhocks—Stately plants growing up to six feet.
Anchusa—Dropmore Bugloss—Wealth of blue in June and later.
Aquilegia—Columbine—Favorites in the garden and woods.
Asters glorify the autumn landscape. Many new varieties and colors.

with large flowers.

Boltonia. White asters liked for backgrounds and extensive naturalizing.

Campanula—Bellflower—Blue and white bells that are always decorative.

Chrysanthemums. Plant in the spring and re-decorate your garden when they bloom in autumn.

Delphinium—Larkspur—Pale blue, deep blue and purple.

Dianthus barbatus—Sweet William—Cheerful sweeps of pink for a small investment.

Dianthus deltoides—Maiden Pink—Good sod for dry banks.

Dianthus plumarius—Grass Pink—Carnation-like blue foliage.

Digitalis—Foxglove—Purple, pink and white, three feet; plant hundreds in woodland borders.

English Daisy. The children delight to make their own gardens with these.

Funkia—Hosta—Plantain lily.

Gaillardia—Blanket flower—Wide flash of yellow, orange and bronze.

Hemerocallis—Daylily—Tall stems and yellow flowers.

Iris, Japanese, German, Siberica and dwarf. Select and plant in bloom.

Mallow. Decorate the meadows with these. Gigantic, red flowers.

Paeony. An old garden favorite.

Phlox. Pink, salmon, white—all summer. Select in bloom.

Platycodon—Balloon flower—White, blue. Campanula-like flowers.

Primrose, for borders and naturalizing.

Salvia Azurea—Azurea sage—Blue, 3 feet, August.

Sedum—Stonecrop—In variety for rocks and sandy banks.

Stokesia laevis—Stokes Aster—Blue, all summer.

Sweeps of color that take care of themselves can be achieved by planting in your grounds with your knowledge, our knowledge of soil and exposure and our plants. It is a type of gardening that may become the best. You can start any time. It is not expensive.

Roses

CLIMBING ROSES, \$0.75 each, \$6.00 per ten

CLIMBING AMERICAN BEAUTY	Rich carmine
AMERICAN PILLAR	Cherry pink with white center
DORTHY PERKINS	Pink or white
DR. W. VAN FLEET	Pink
EXCELSA	Brilliant scarlet crimson
SILVER MOON	Single white, yellow center
ROSERIE	Deep pink or carmine
PAUL'S SCARLET CLIMBER	Shining scarlet

They bloom all summer and are a joy to every home. Protect them during the winter by mounding up the plants one foot high with earth and cover when frozen with strawy manure. Come and take them home with you, they are potted.

We refer to the following, and many others.

MR. FRANK T. LYONS

Port Washington

MR. H. P. METZ, Port Washington

MR. C. T. PASTOR,

Port Washington

R. R. STATION, Port Washington

ROCKVILLE CENTER HIGH SCHOOL,
Rockville Center

Landscape Architect,

Noel Chamberlin

MR. G. B. HEDGES, Westbury

Landscape Architect,

E. Gorton Davis

HYBRID TEA ROSES, \$1.25 each, \$10.00 per ten

ALEX HILL GRAY, yellow	KAISERIN AUGUSTA VICTORIA, white
BETTY, coppery yellow	LADY ASHTOWN, carmine pink
CHATEAU DE CLOS VOUGEOT, scarlet	LOS ANGELES, flame pink
DEAN HOLE, silvery carmine	MME. BUTTERFLY, suffused apricot
DORTHY PAGE ROBERTS, coppery pink	MME. HERRIOTT, reddish copper
DUCHESS OF WELLINGTON, yellow	LADY HILLINGDON, apricot yellow
ETOILE DE LYON, golden yellow	MRS. AARON WARD, Indian yellow
GENERAL SUP. A. JANSSEN, carmine	MRS. A. R. WADDELL, coppery red
GRUSS AN TEPLITZ, crimson scarlet	MRS. WAKEFIELD CRISTIE-MILLER,
HADLEY, bright red	OPHELIA, salmon rose
HARRY KIRK, clear yellow	PRINCE OF BULGARIE, deep salmon
J. L. Mock, pink	SUNBURST, bright orange

Fruits

IF you want a place where you can come and get fruit and berries in good assortment whenever you think about it, Hicks Nursery is the place. You can put them in your car or tie them on the running board. The time of the year does not make 5% difference. Your car will get home quick enough to prevent all the leaves drying out, even in summer. When your neighbors have currants or apples you can plant them. The difficulties of spraying and fear of stealing is a lazy excuse for not growing your own.

The distance apart is not important; how much fruit you can grow on your area is a game that interests you and profits you. Water helps.



Large-Sized Apple.

APPLES 5-6 ft. 2 yr.	\$.75 each \$6.50 per ten
DWARF APPLES, 2 yr.	\$1.00 each \$9.00 per ten
LARGE SIZED APPLES up to 8 inches in diameter. Select at the Nursery.	
BALDWIN. Red; November to April	NORTHERN SPY. Red; Nov. to March.
DELICIOUS. Red; Winter	RED ASTRACHAN. August
DUCHESS. Red; Aug. Sept.	ROME BEAUTY. Red; December
EARLY HARVEST. Yellow; August	SPITZENBURG. Red; Winter
FALL PIPPIN, Yellow; Fall	SWEET BOUGH. Yellow; August
GRAVENSTEIN. Red; August	TRANSCENDENT CRAB. October
JONOTHAN	WEALTHY. Red; Sept. to December
MCINTOSH. Red; October, November	YELLOW TRANSPARENT. July
PEARS 5-6 ft. 2 yr.	\$1.25 each \$11.00 ten
DWARF PEARS 2 ft. 2 yr.75 each 6.50 ten
PEACHES 4-6 ft. 1 yr.60 each 5.50 ten
CHERRIES 4-5 ft. 2 yr.	1.50 each 12.50 ten
GRAPES 1 yr.30 each 2.50 ten
RHUBARB.35 each 10.00 ten
RASPBERRIES.	1.50 ten \$10.00 per hundred
BLACKBERRIES.	1.50 ten 10.00 per hundred
GOOSEBERRIES.50 each 4.00 ten
CURRANTS.50 each 4.00 ten
ASPARAGUS.	4.00 per hundred
EUROPEAN FILBERTS 2-3 yr.	2.00 each \$17.50 ten
BUTTNERS ZELLER	ITALIAN RED
EARLY GLOBE	RED LAMBERT
WHITESBOG BLUEBERRIES, Improved large. \$16.00 to \$18.00 per ten.	