



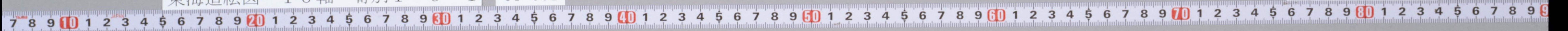
東海道繪圖卷第八

赤坂ヨリ
宮内省

11
9-1

東海道繪圖 10軸 寄別1-6-1 08-001

国立国会図書館





東海道繪圖卷第八

赤坂ヨリ
宮口迄

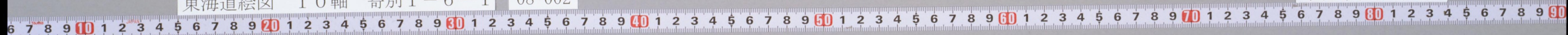


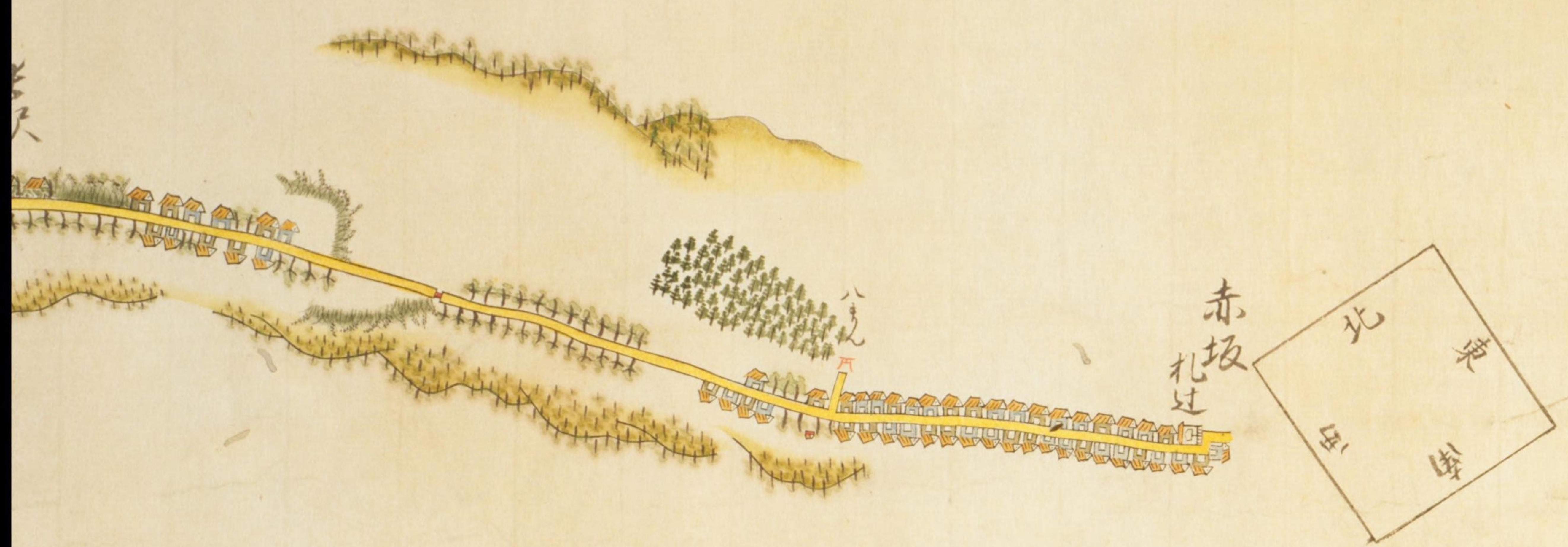
16

1

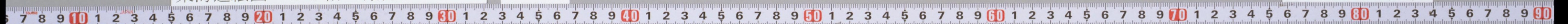
東海道繪圖 10軸 寄別1-6-1 08-002

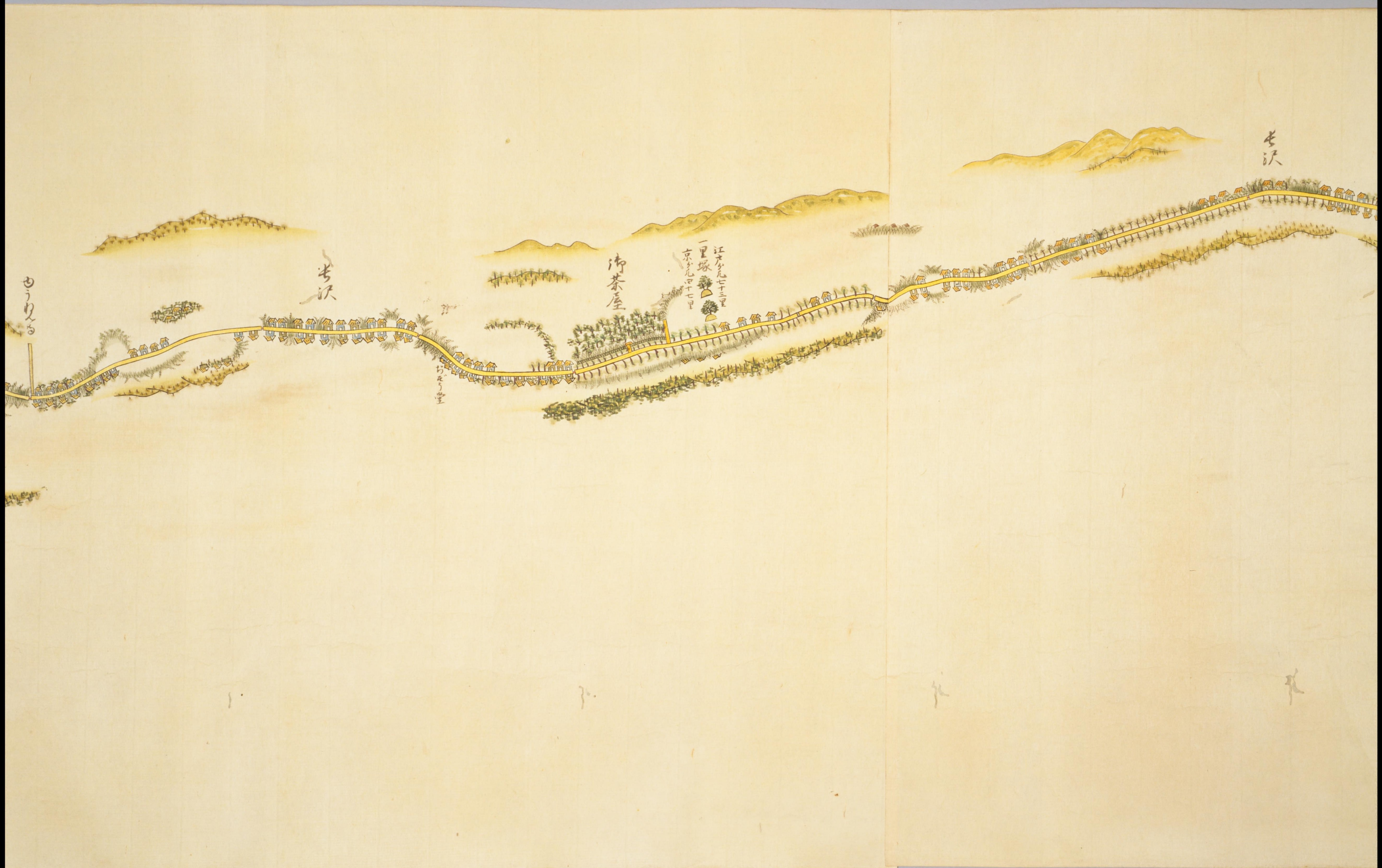
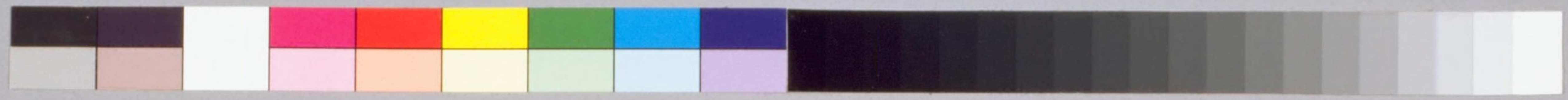
国立国会図書館





2. 1. 21





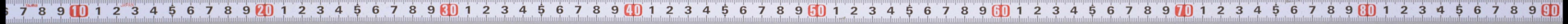
由うりる

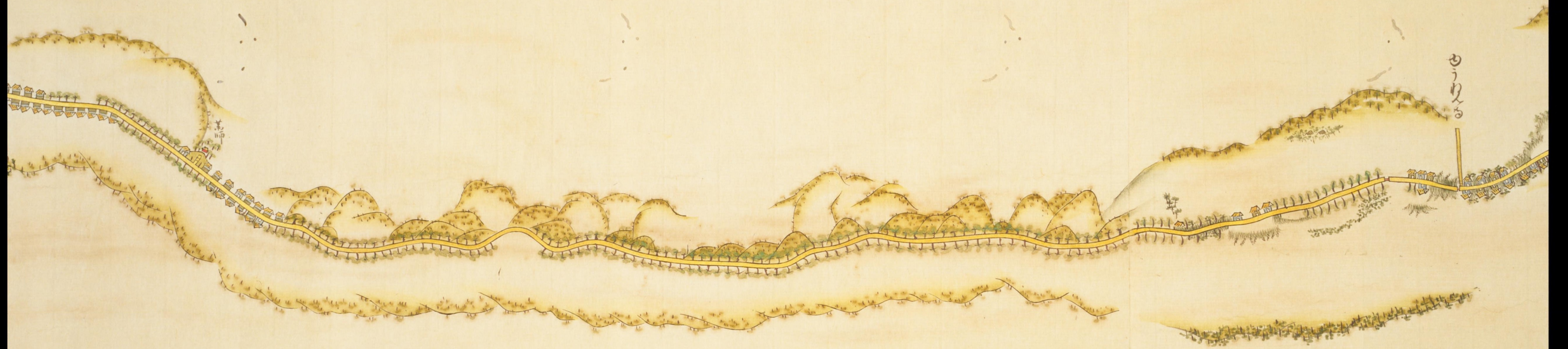
古沃

新茶屋

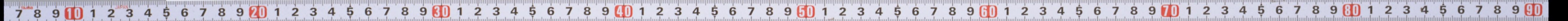
江戸分九十三里
一里塚
京分九十七里

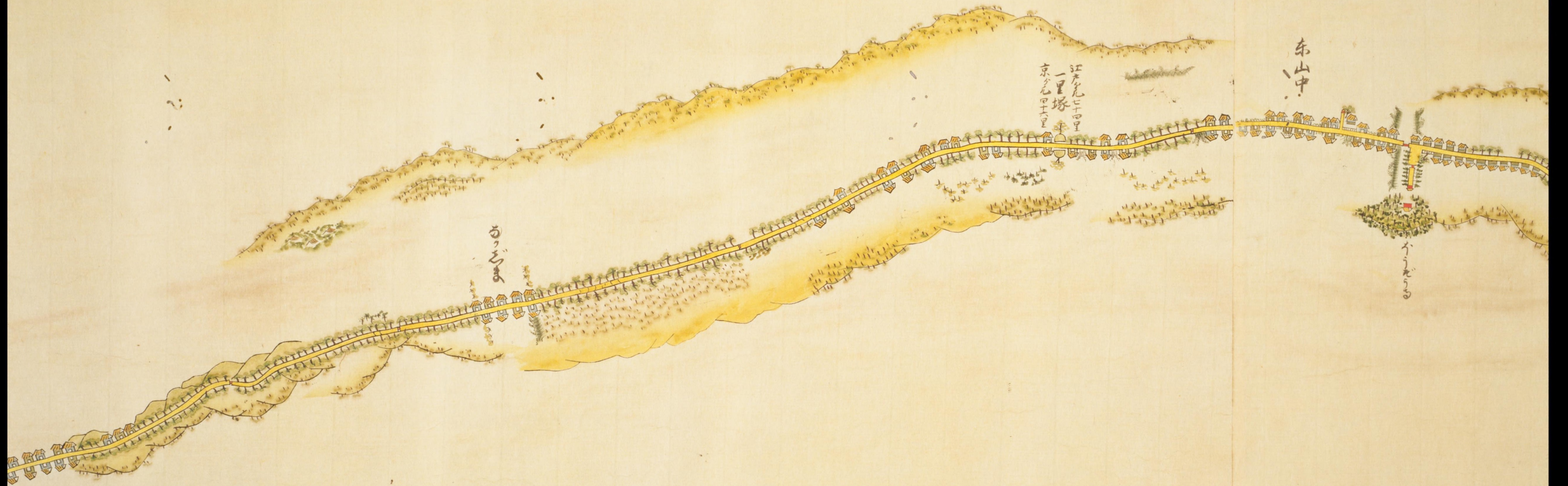
古沃





ゆりる







北
海
道
東

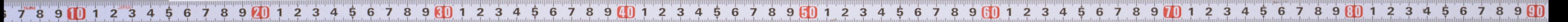
有
川
札
辻

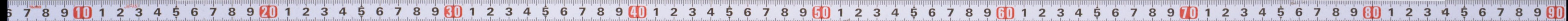
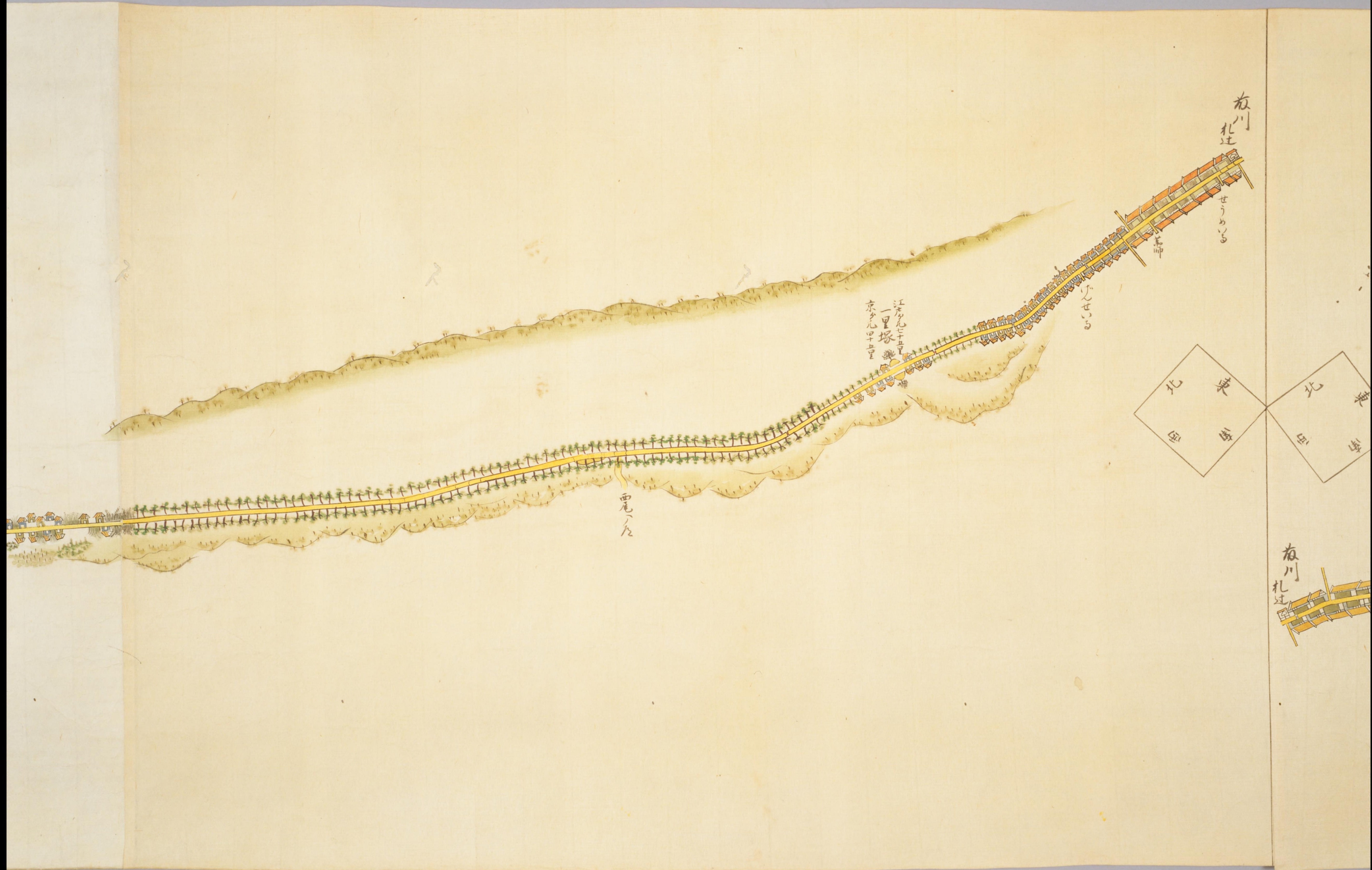


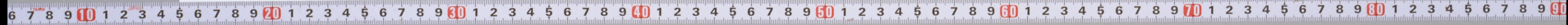
八
丈
山
何
ぞ
の
木

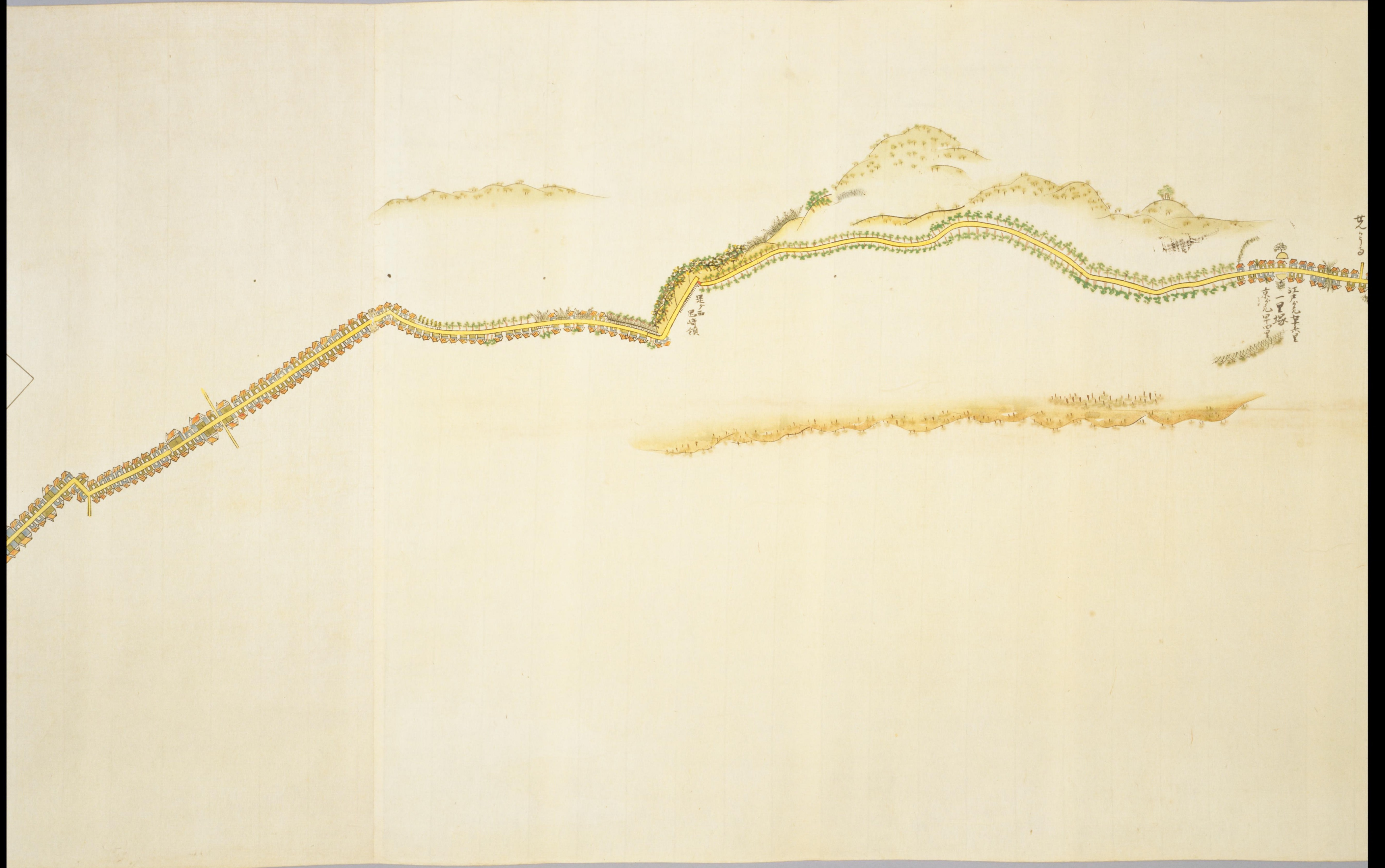
ま
さ
か

山
中





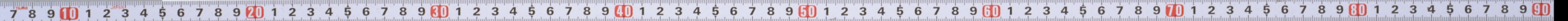


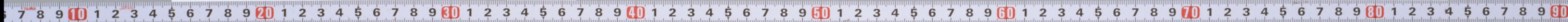


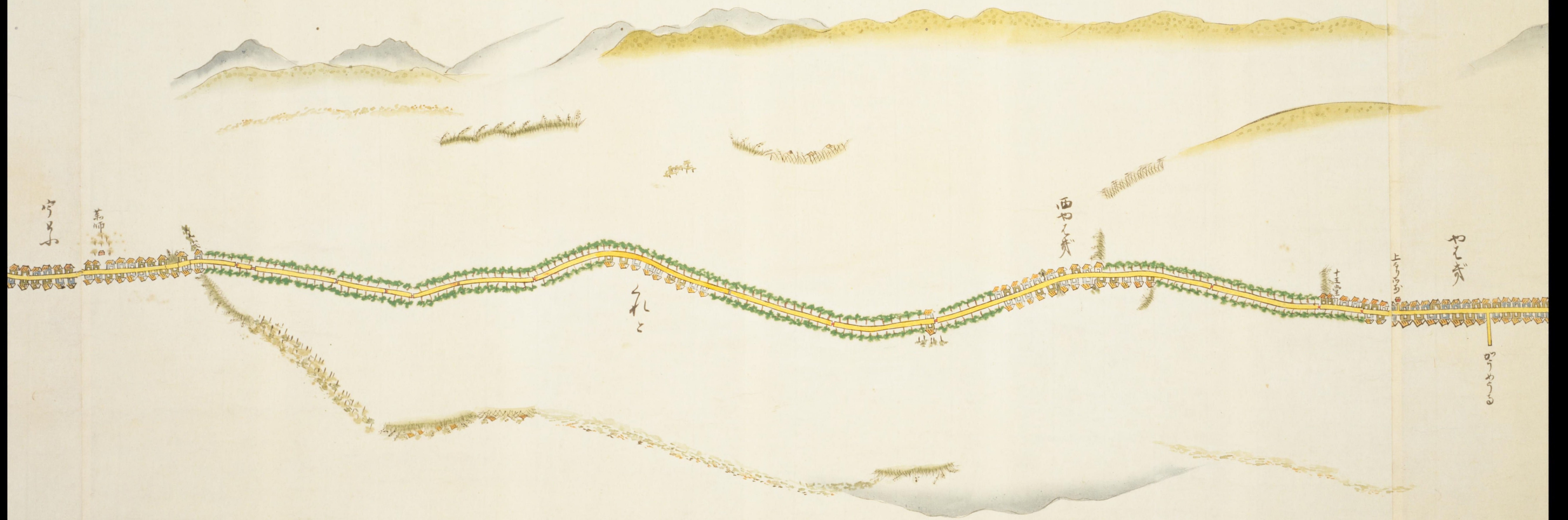
廿二

江ノ上
一里塚
東ノ上
西ノ上

東ノ上
西ノ上







宇治

茶師

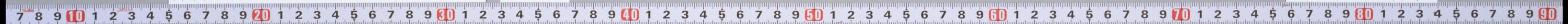
西宮

やま

上り

のり

と





大塚

是ノ東也峠領
西芥屋領

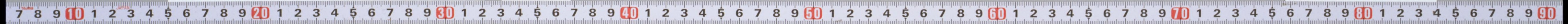
江戸九七八里
一里塚
東九四十二里

古

古

古

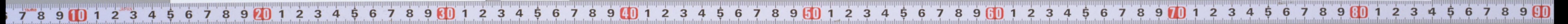
古





ら
ま
ま

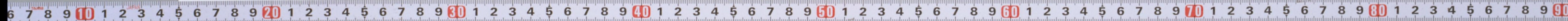
乃
い
け

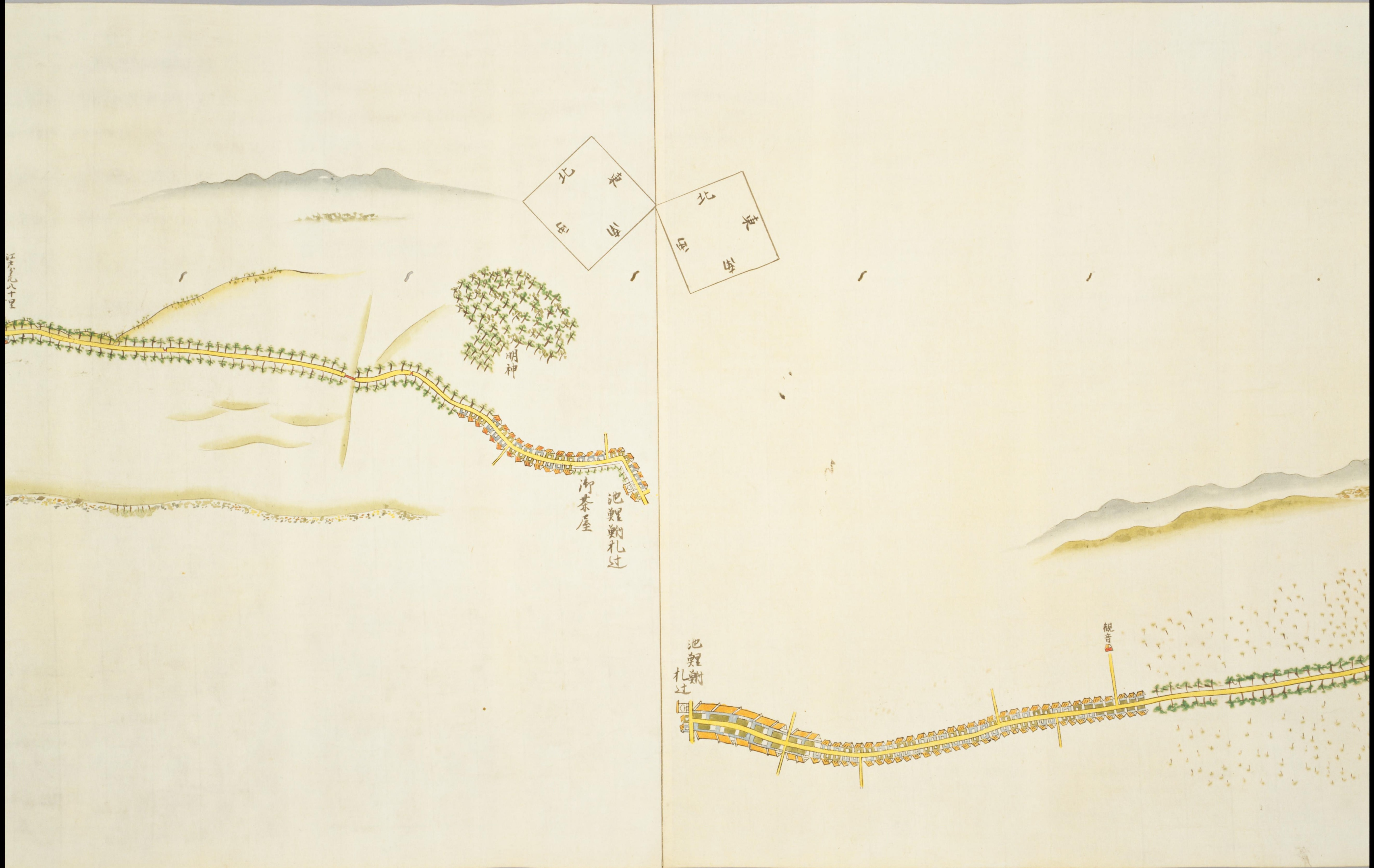




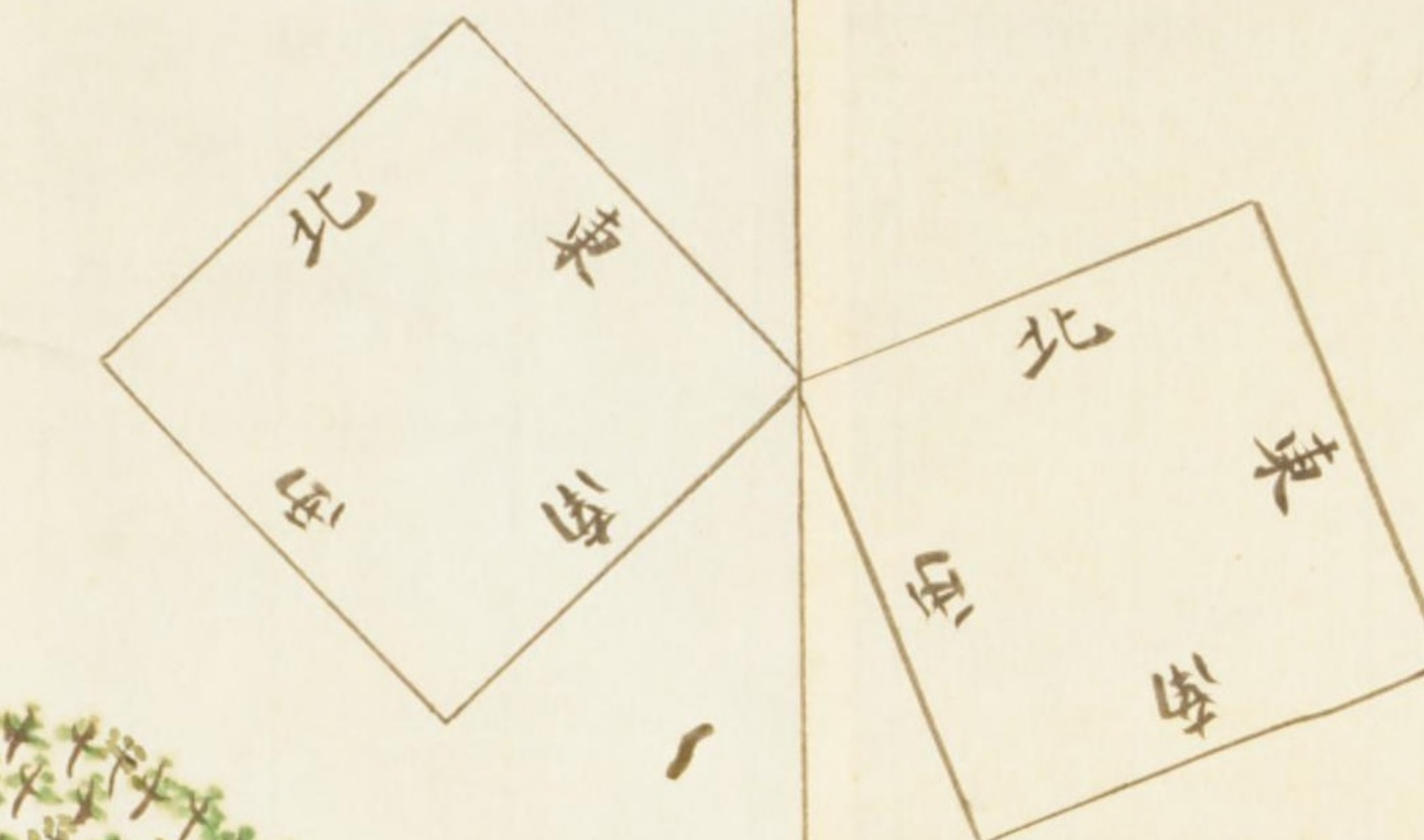
江戸七九里
一里塚
京九四里

宇志多





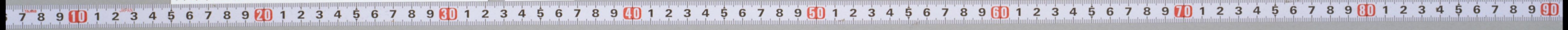
江
九
八
十
里

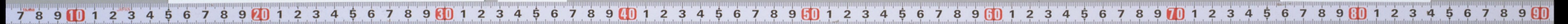
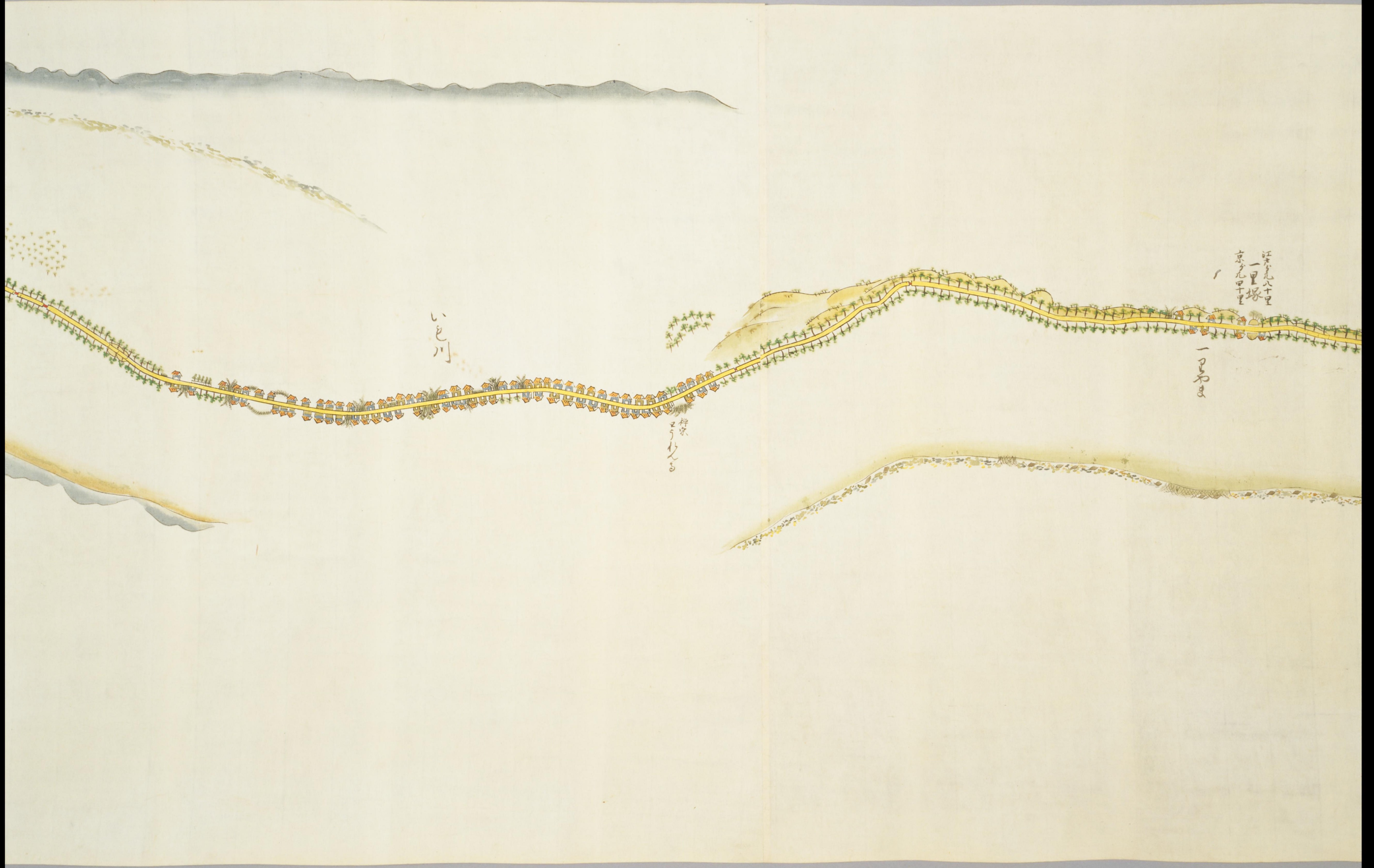
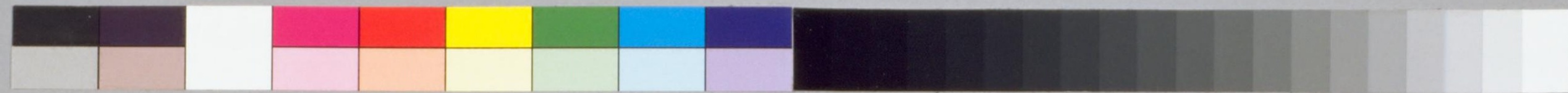


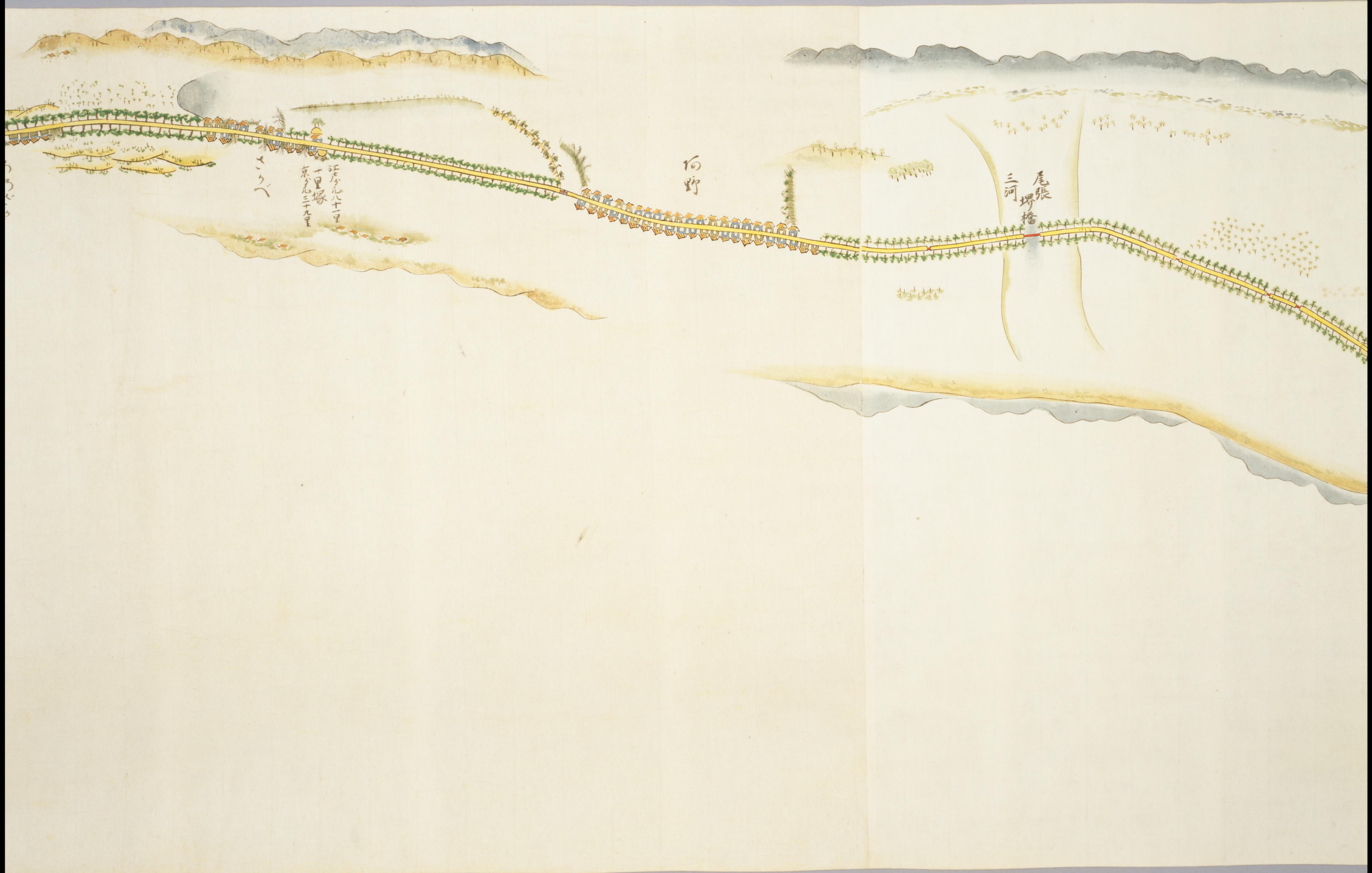
池廻
茶屋

池廻
札

観音



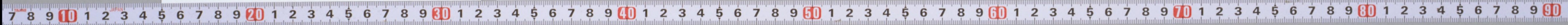


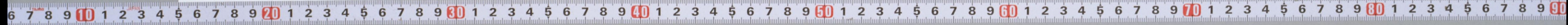
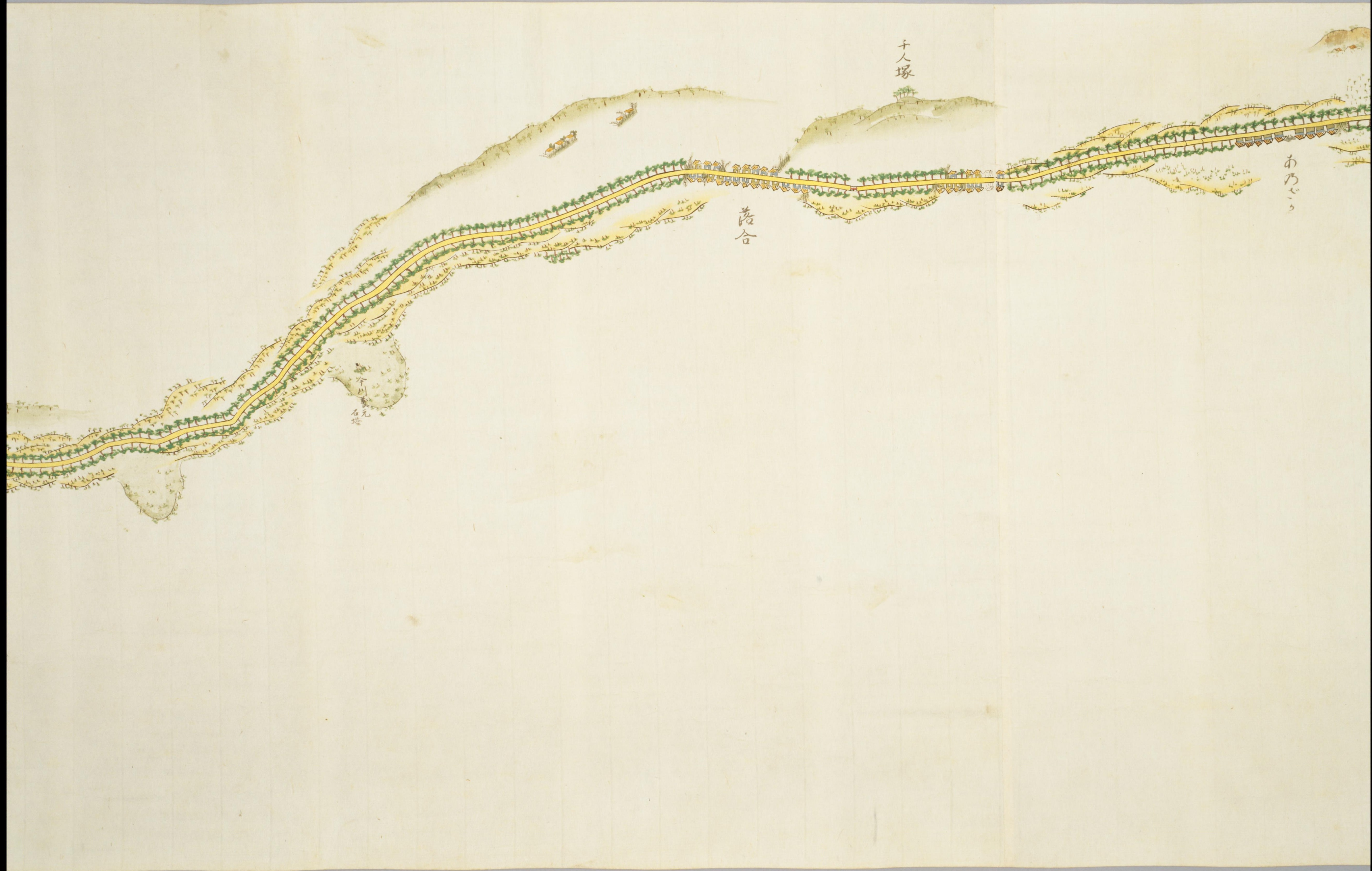


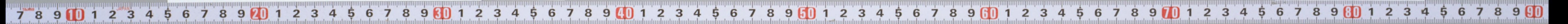
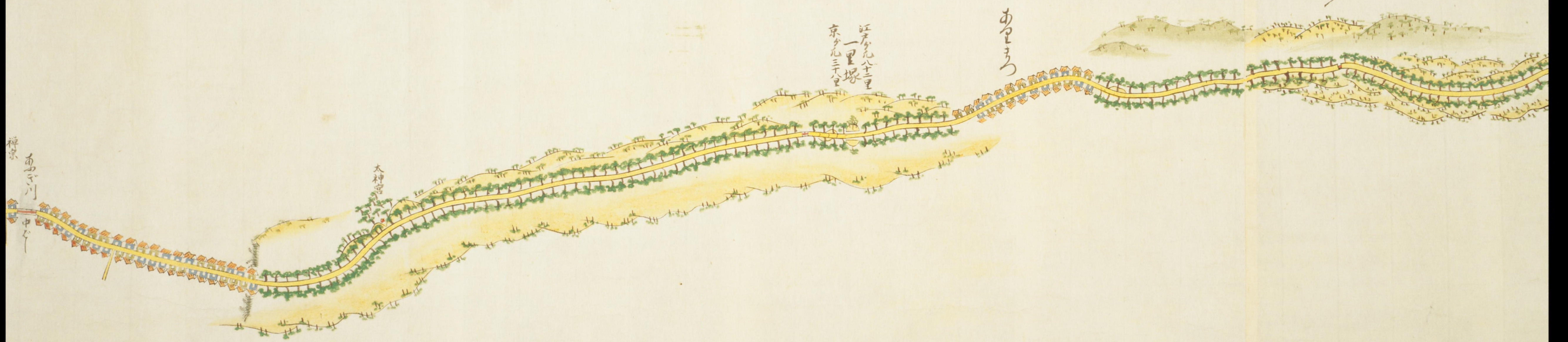
江戸八十里
一里塚
東九三十三里
こくへ

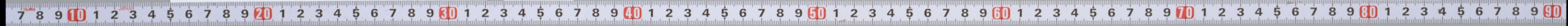
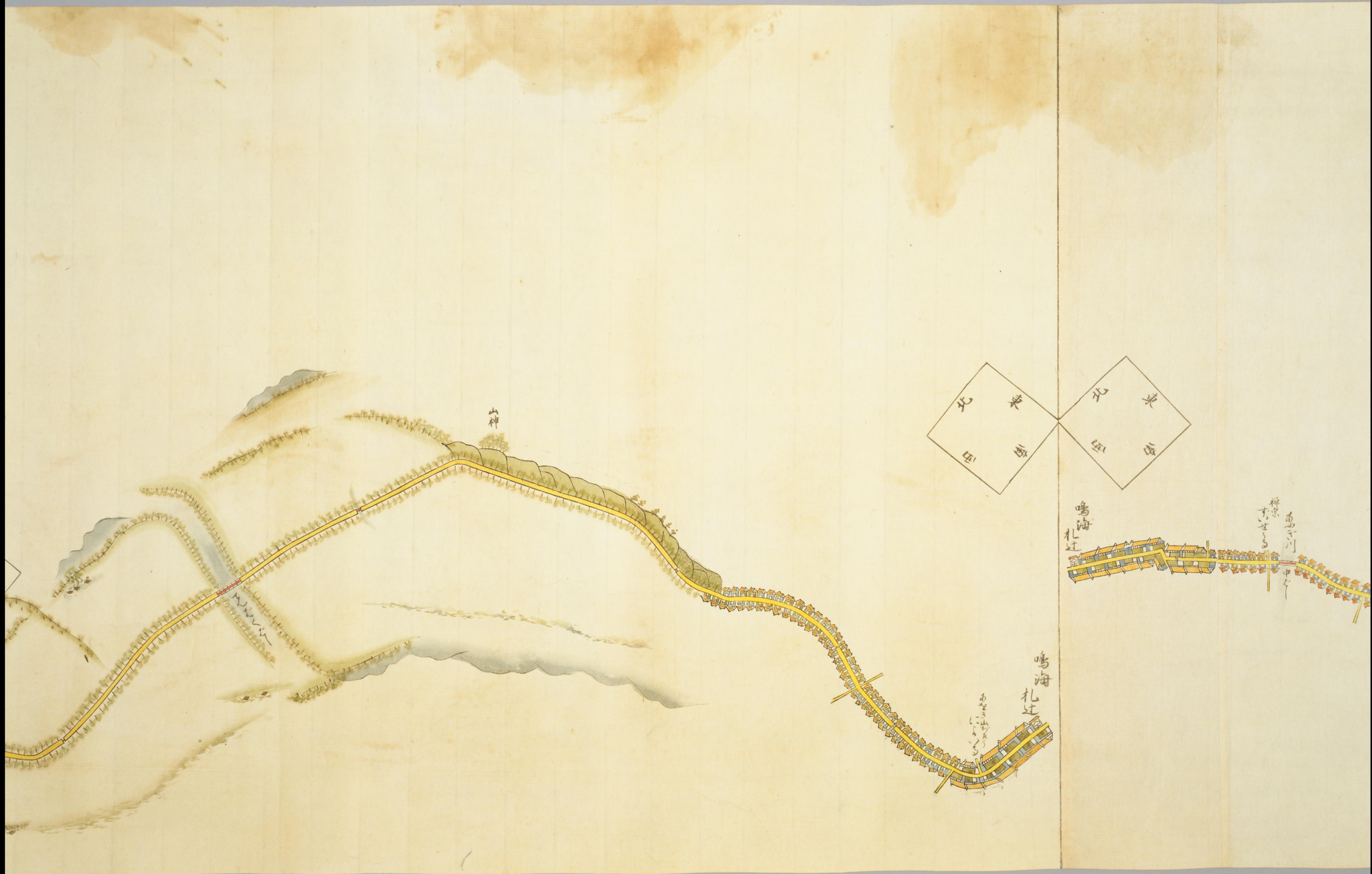
河野

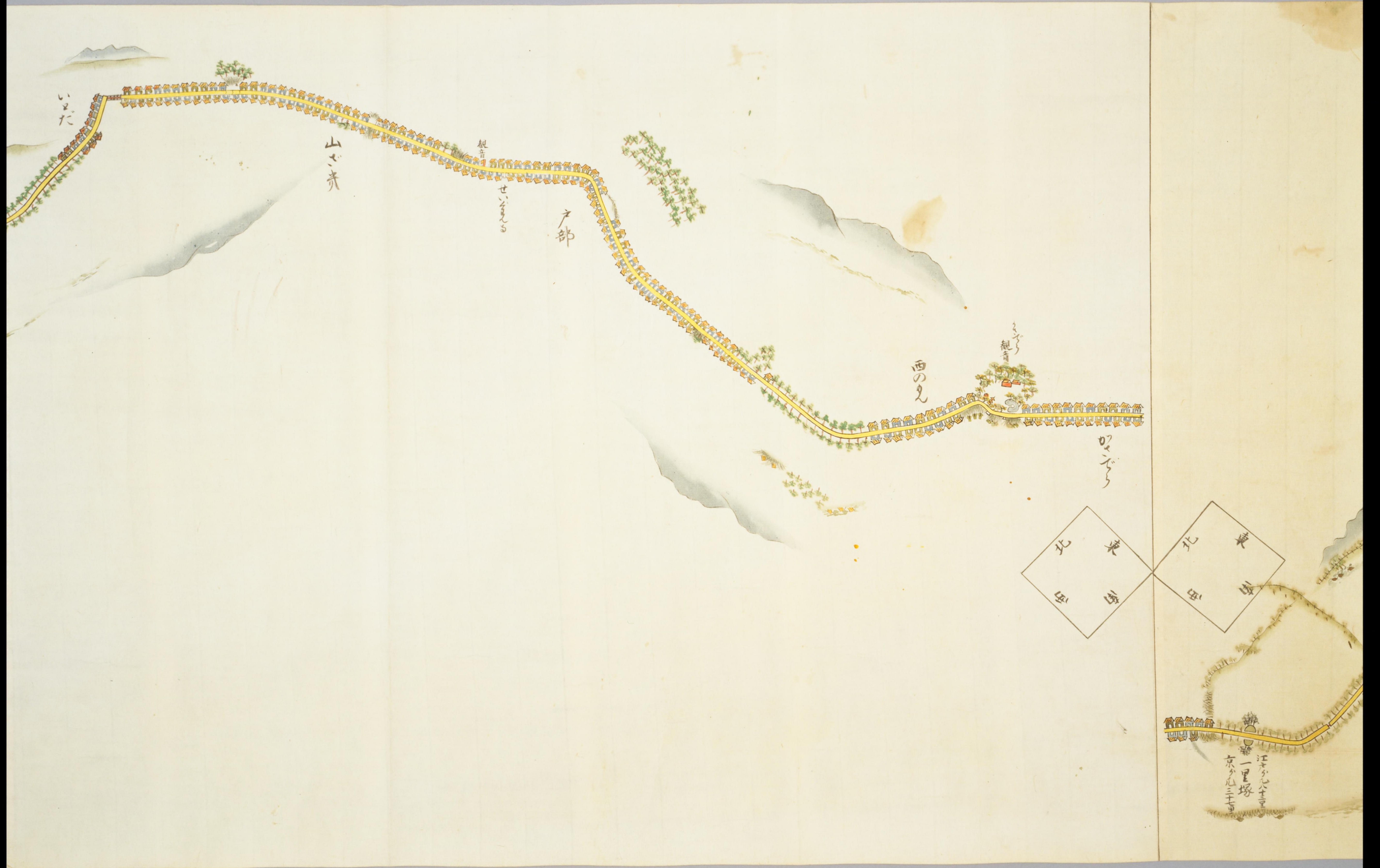
尾張
三河
橋

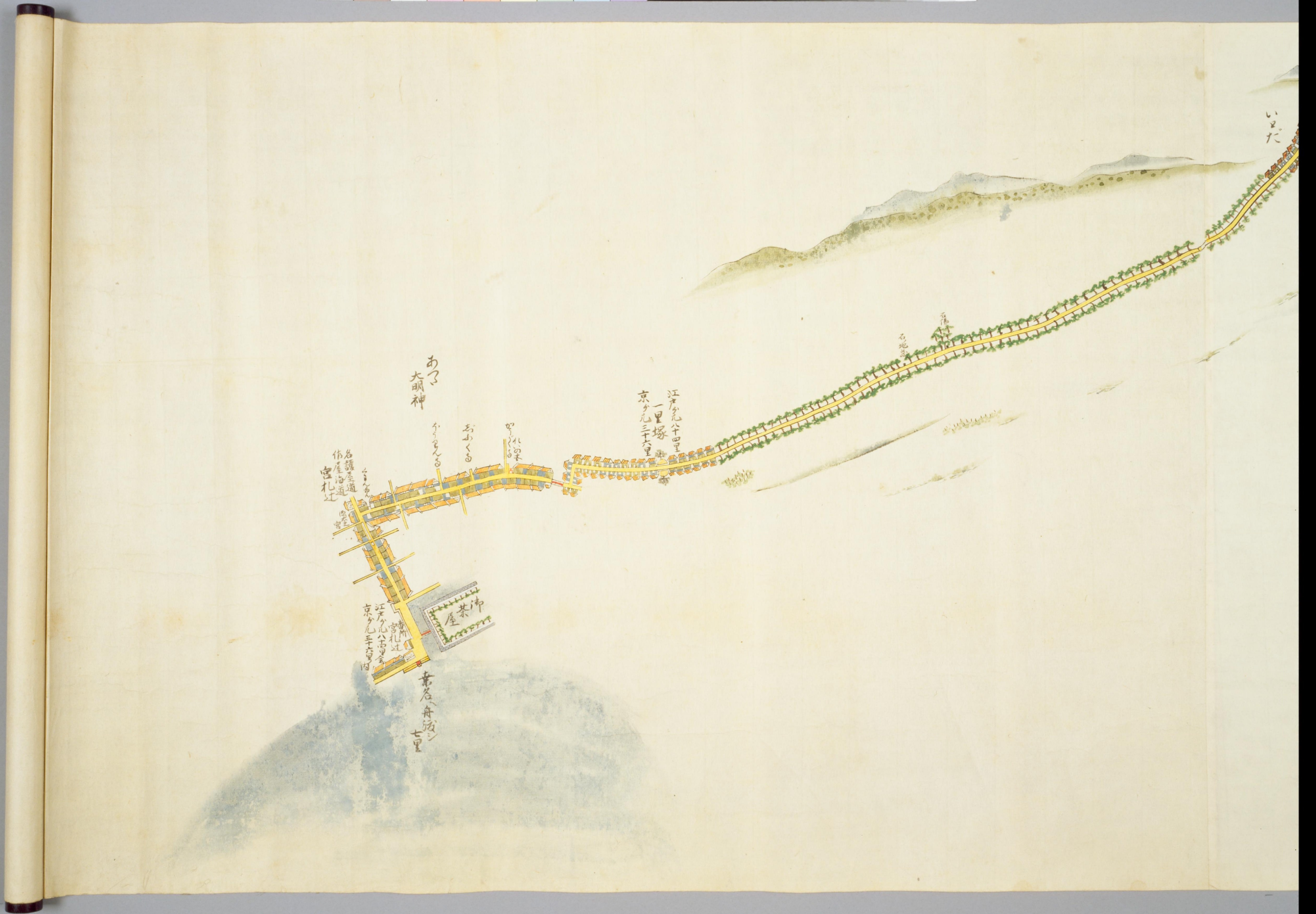












あつし
大町神
かろん
おあく
甲州の茶
江戸九十四里
一里塚
京九三十六里

名護屋道
作屋油道
宮札辻

茶屋
江戸九十四里
宮札辻
京九三十六里

東名舟坂
七里

