

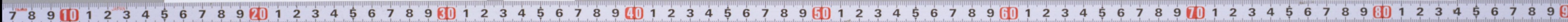


東海道繪圖卷第十 土山司
京之予

10
1

東海道繪圖 10軸 寄別1-6-1 10-001

国立国会図書館





東海道繪圖卷第十
土山ヨリ
京マテ

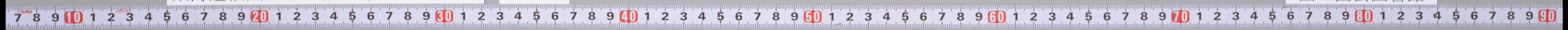


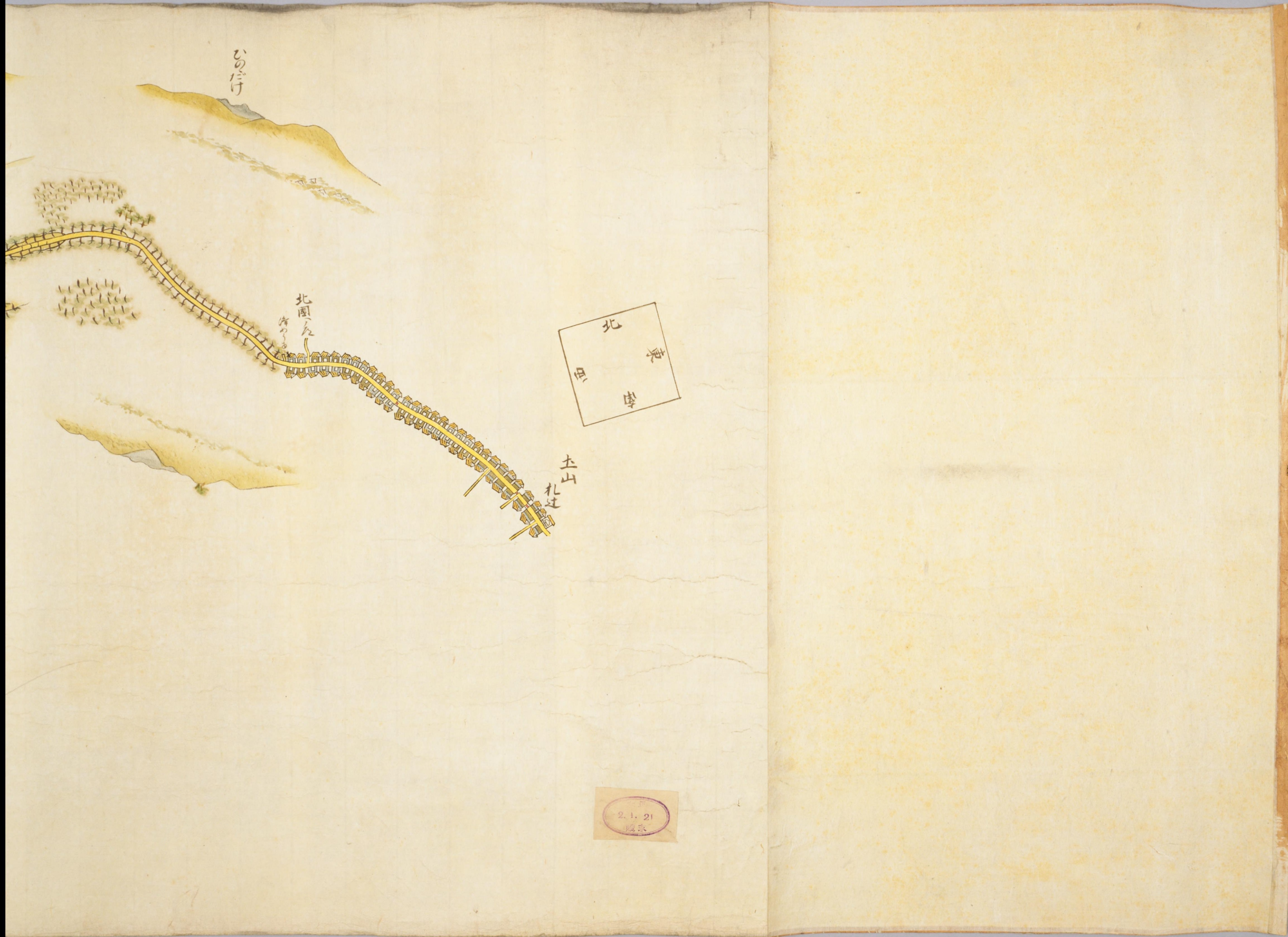
1-6
-1



東海道絵図 10軸 寄別1-6-1 10-002

国立国会図書館





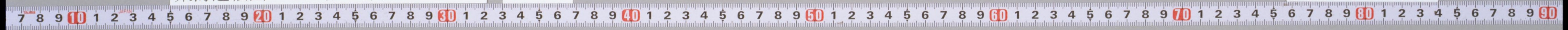
いのだけ

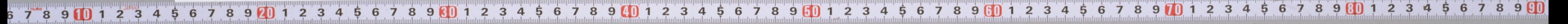
北園
の
左

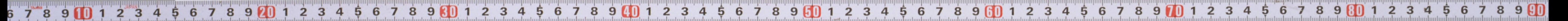
北
海
亭

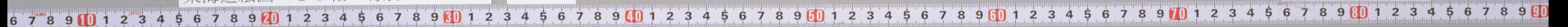
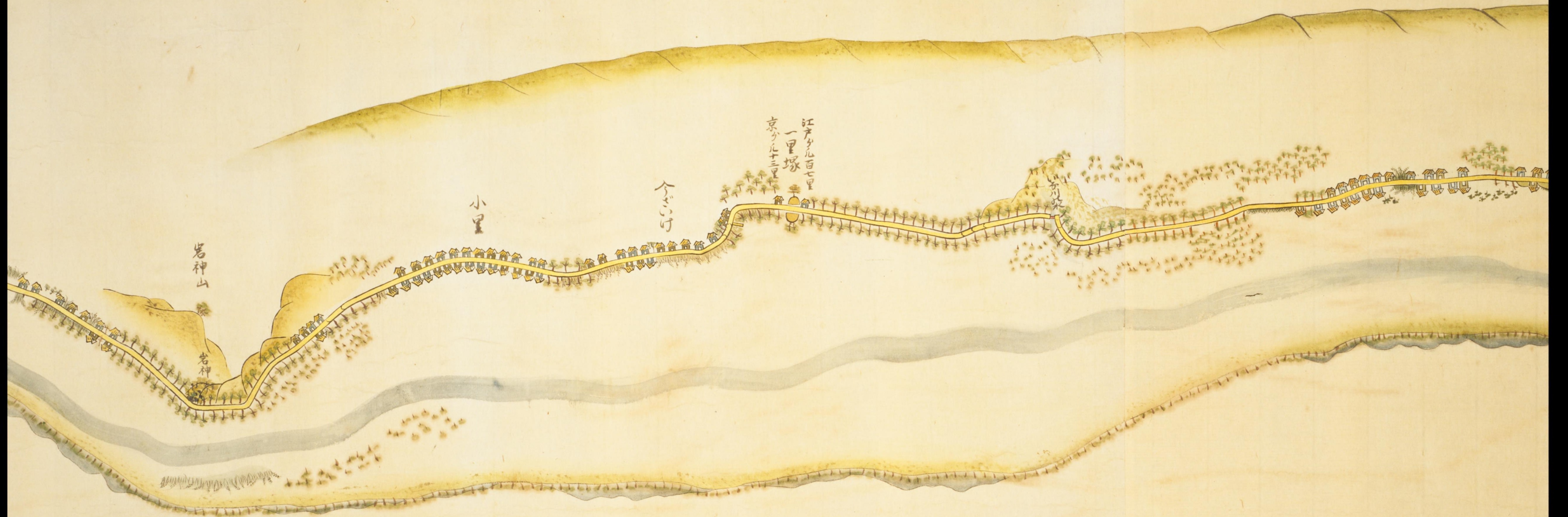
土山
札辻

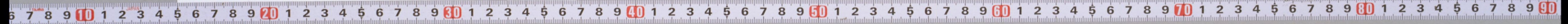
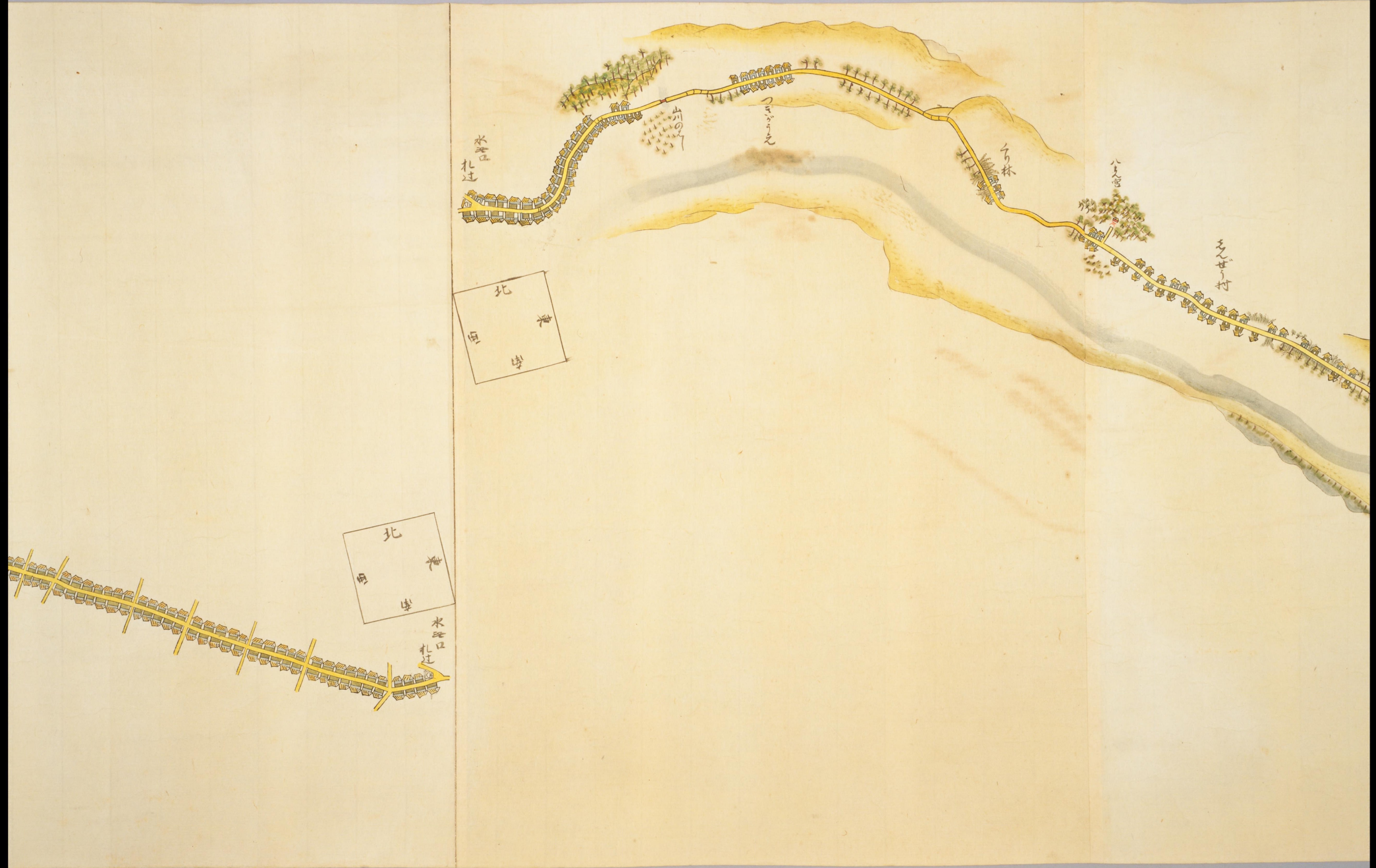
2.1. 21
蔵本

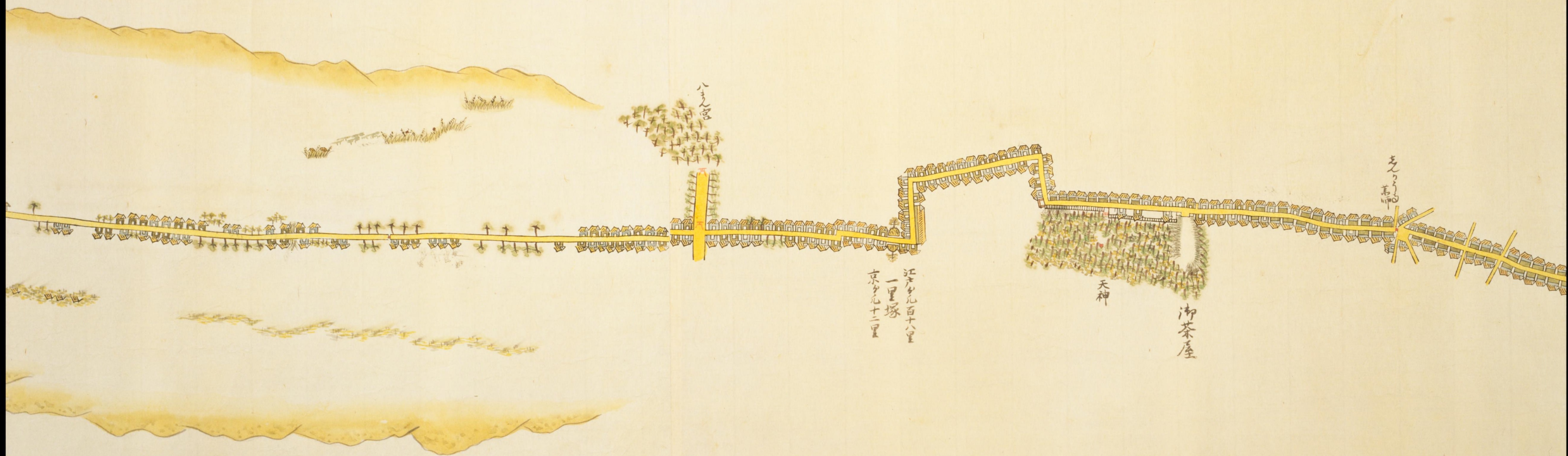












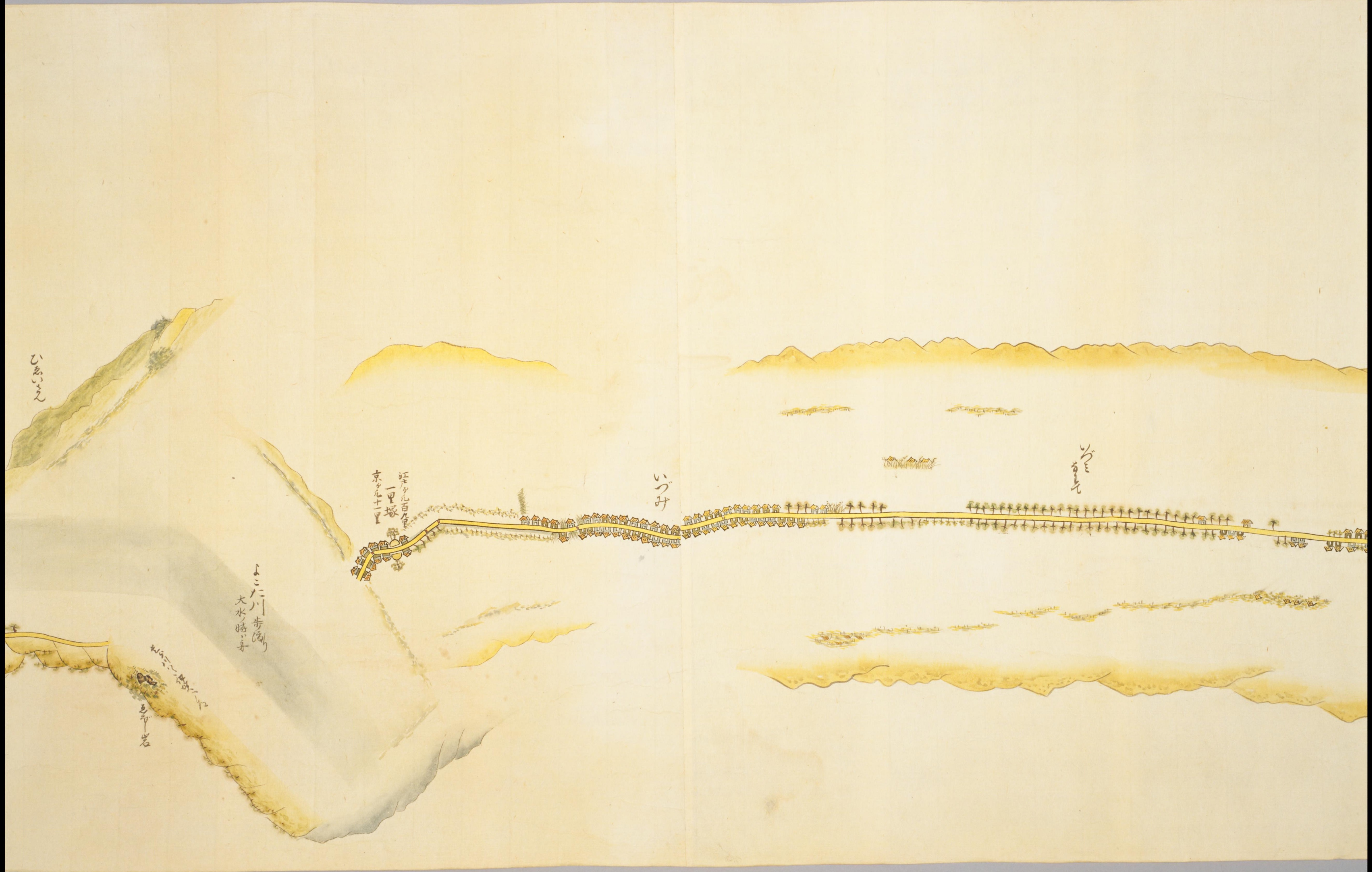
江戸九百八里
一里塚
京九十二里

天神

御茶屋

走馬
馬印





ひあいえ

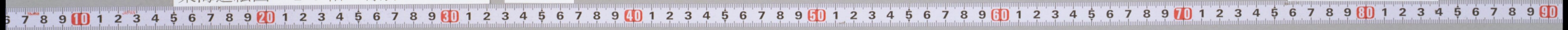
江戸から百々
一里塚
京から十一里

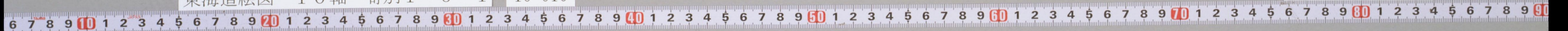
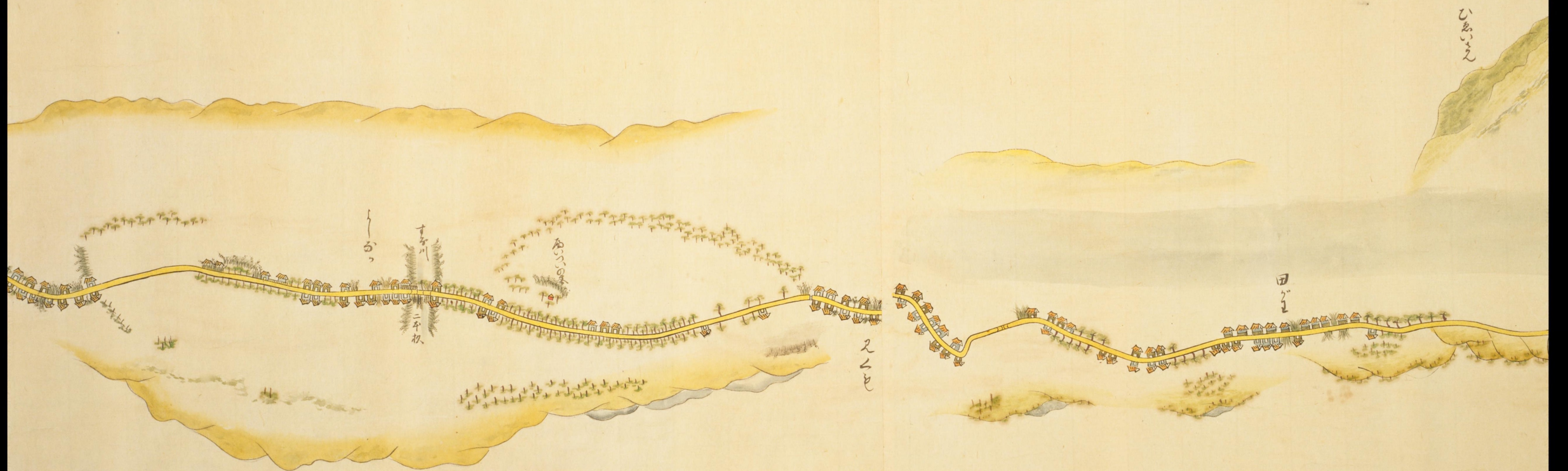
いづみ

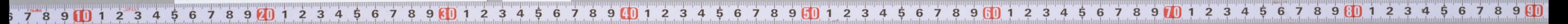
いづみ

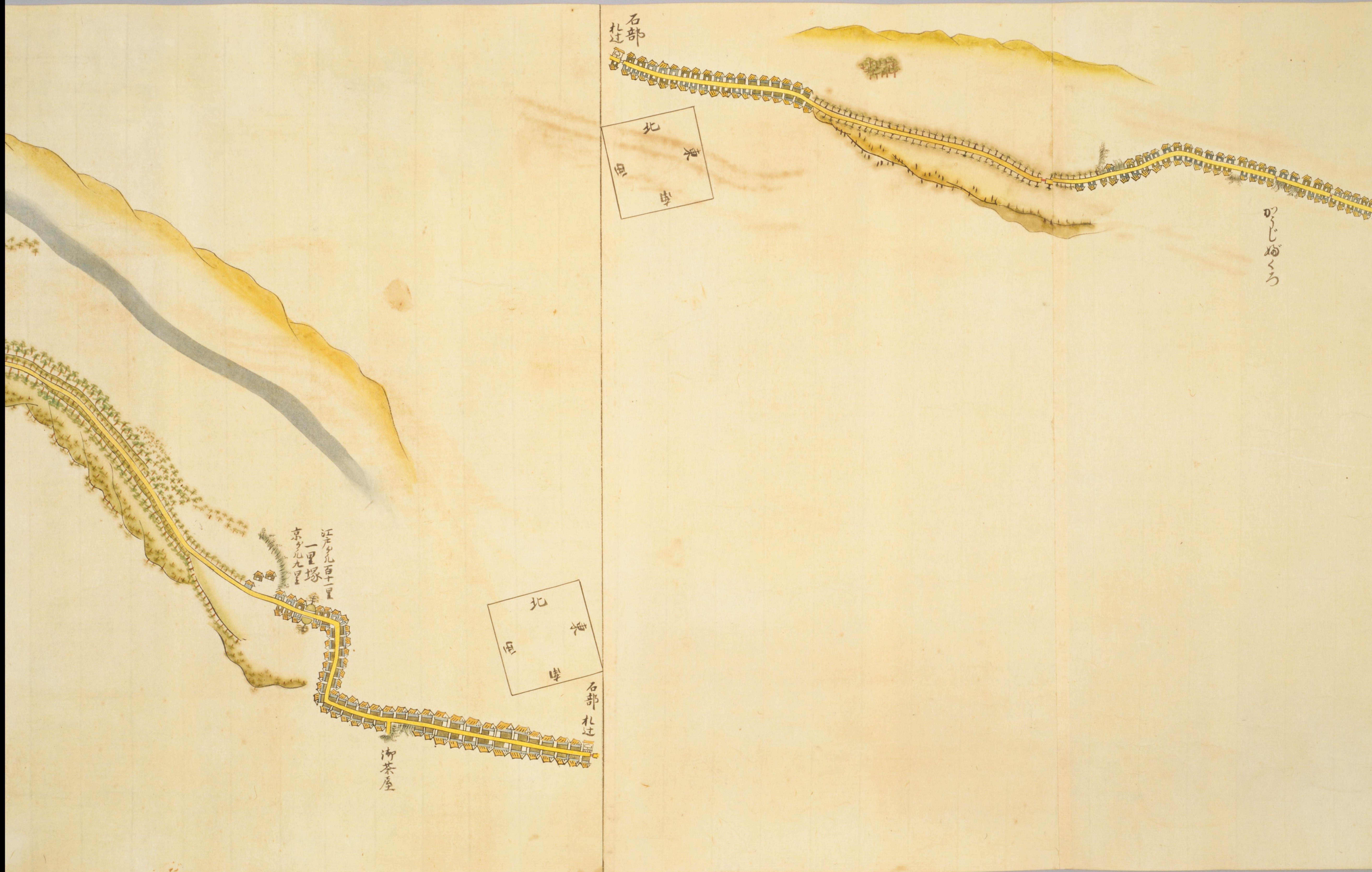
よこた川歩
大水踏舟

名取岩

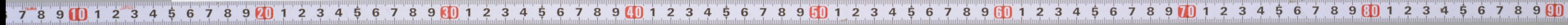


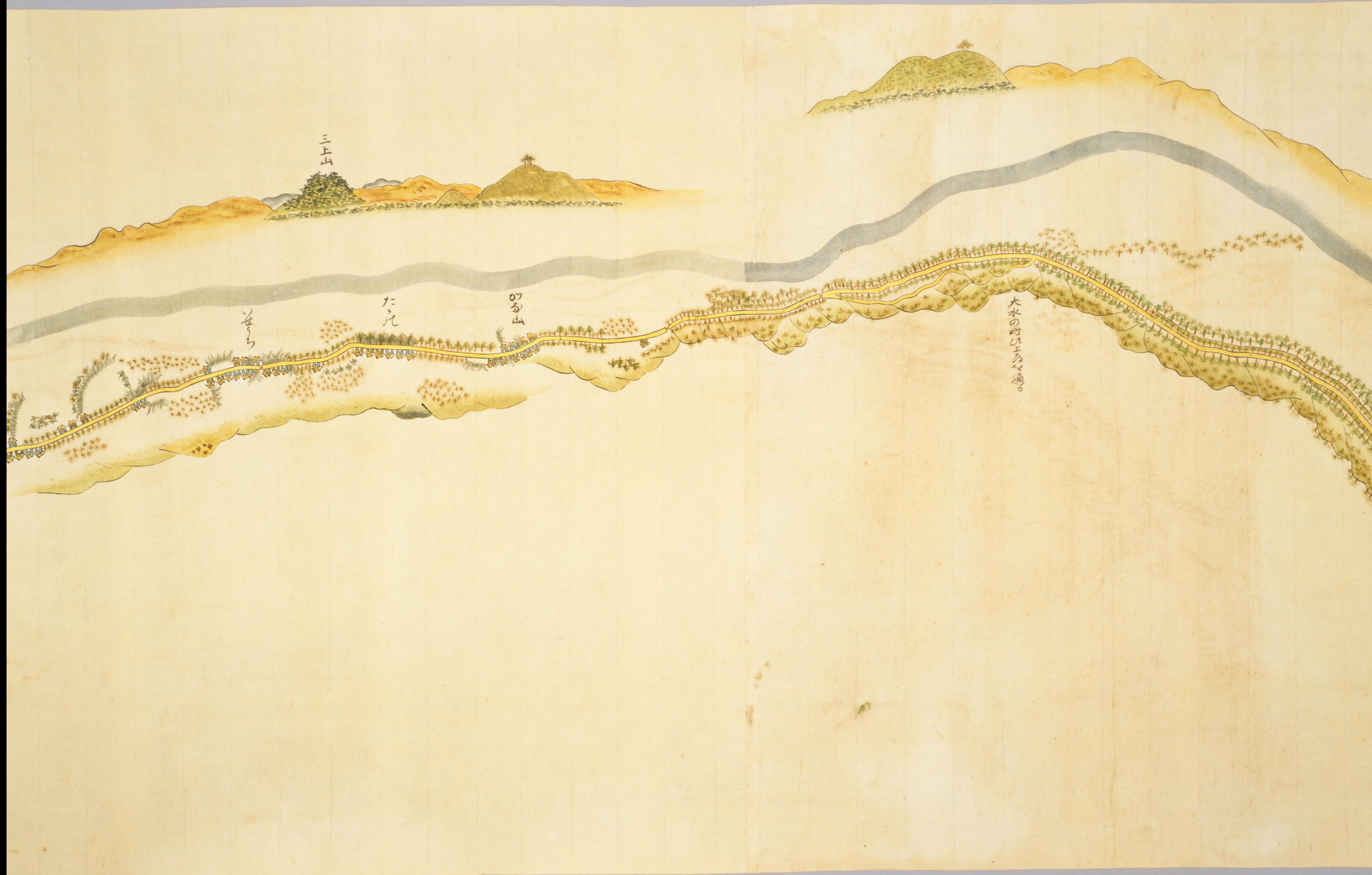






つじのくろ





三上山

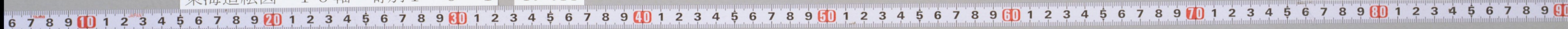
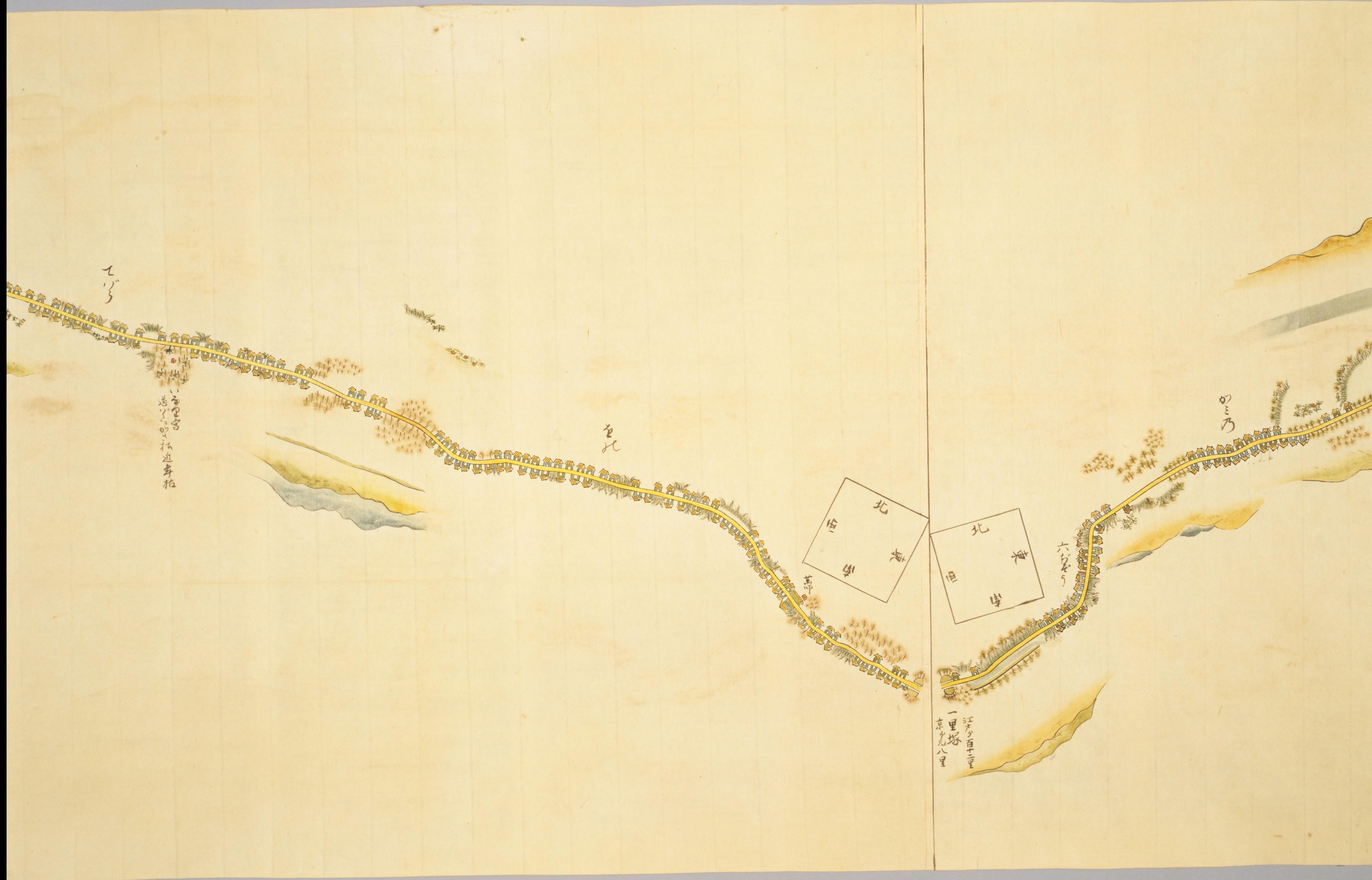
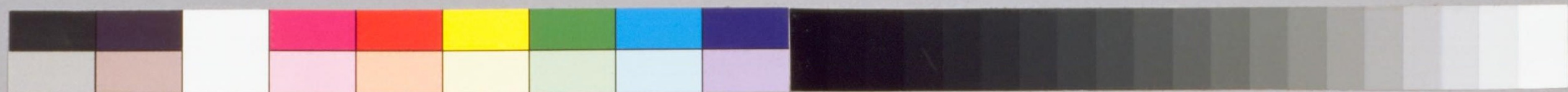
ソウラ

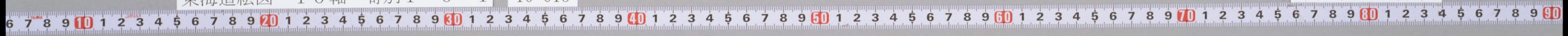
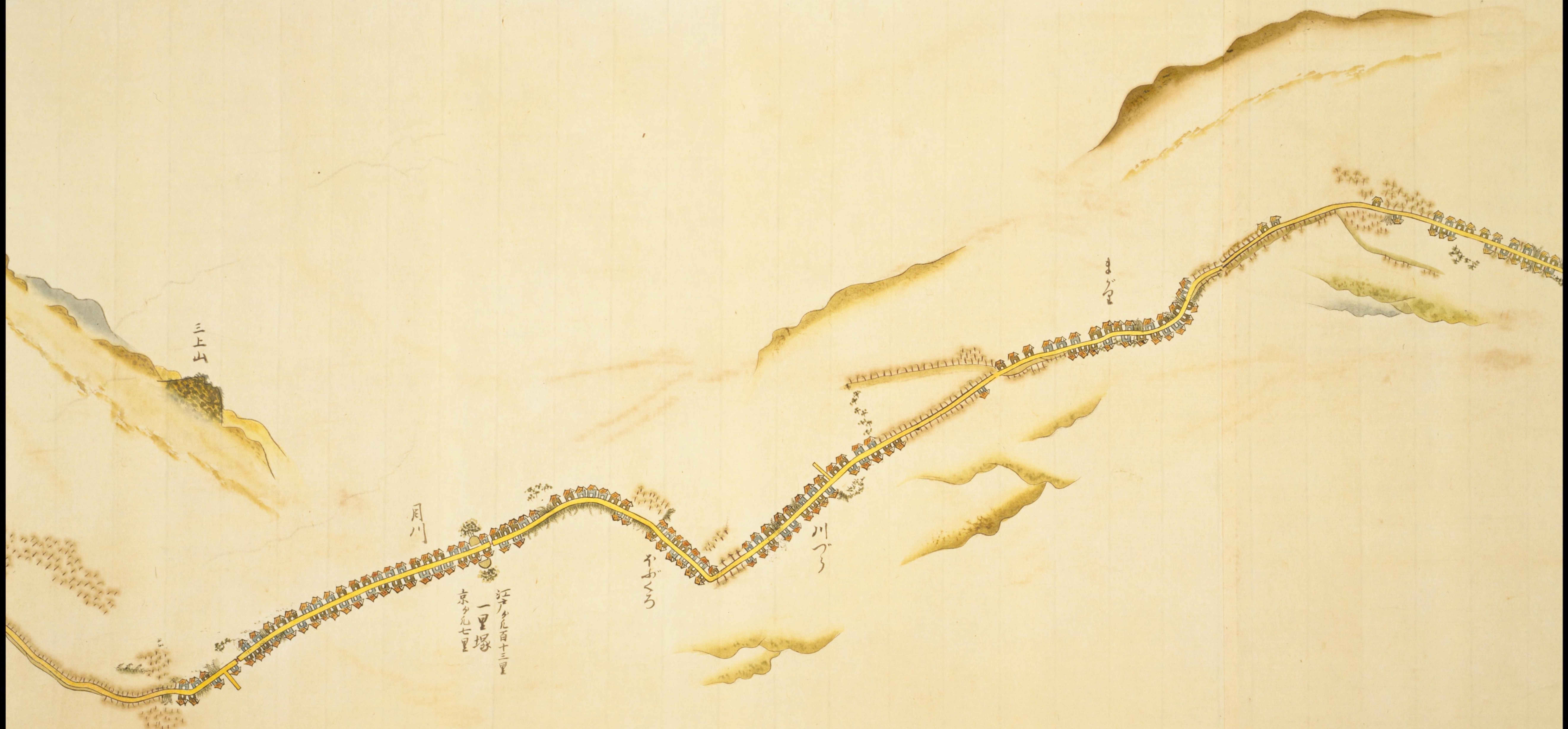
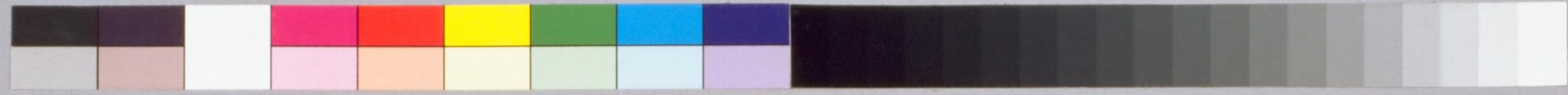
たれ

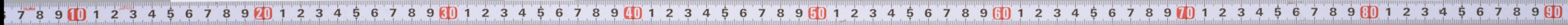
のり

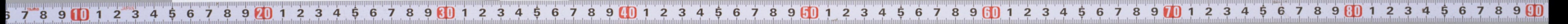
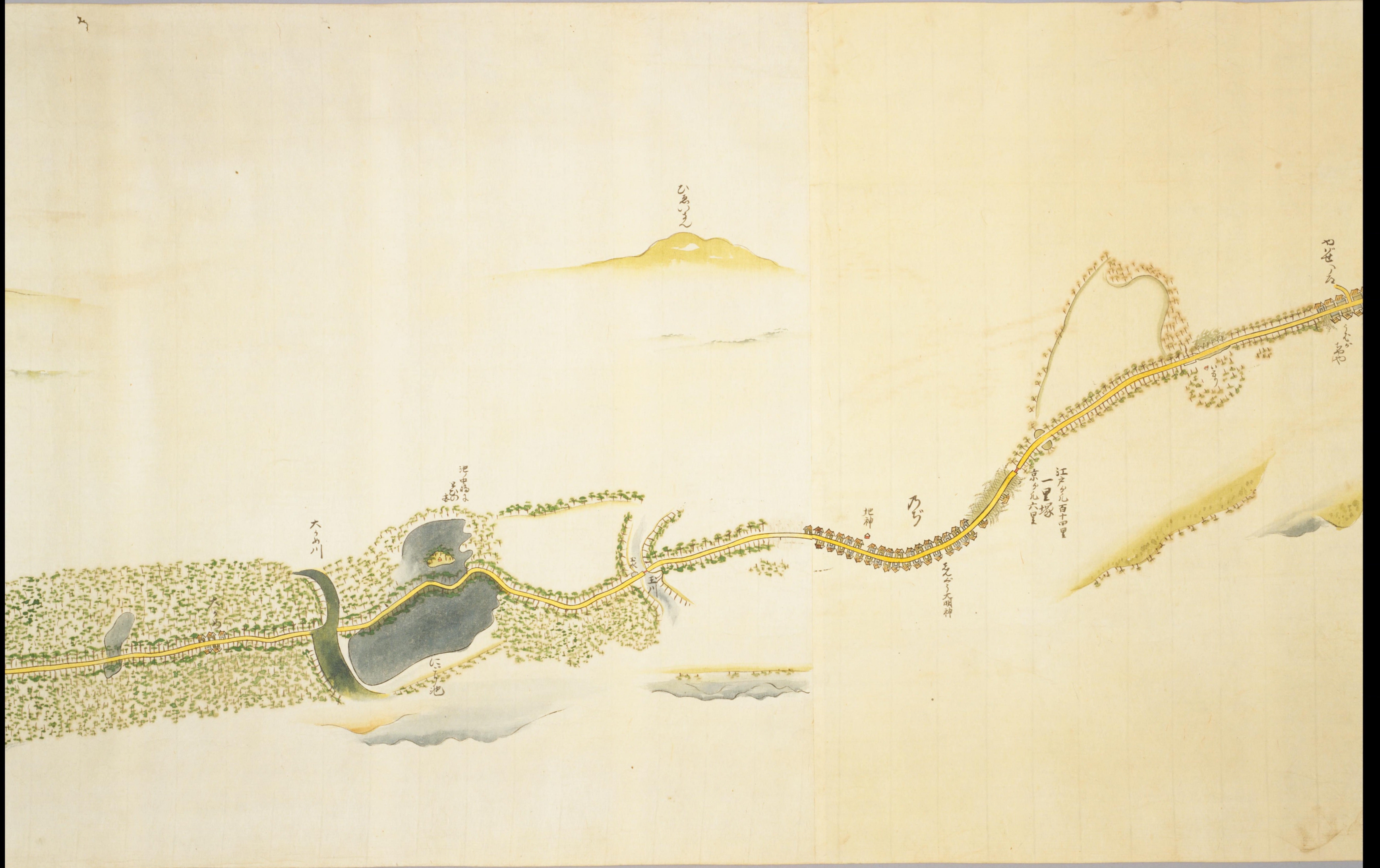
大水の時よみ心通る

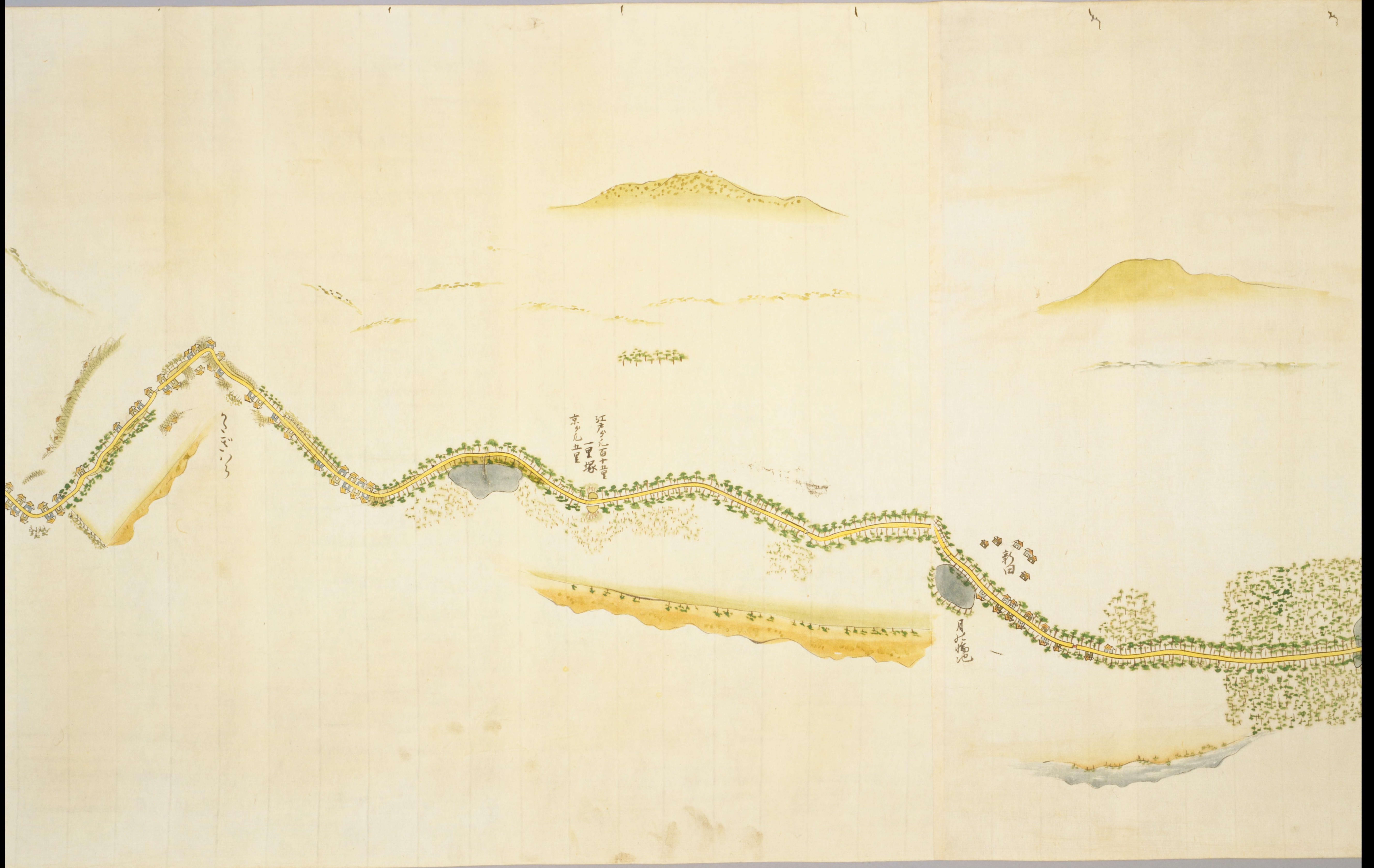
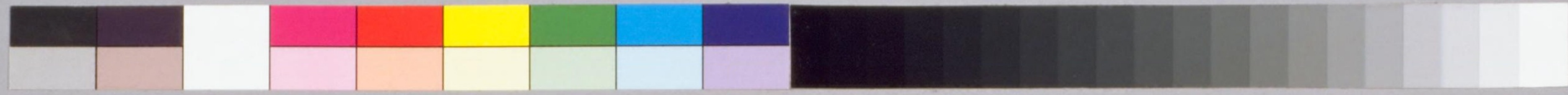












江戸
一里塚
京
九
里

白
菊
池

月
輪
池

