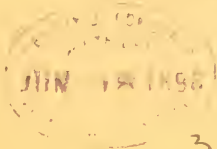


F 129

.I8 P6



Picturesque ITHACA



36304 - B² - 1

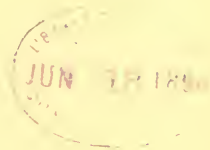
PICTURESQUE

ITHACA

PHOTO-GRAVURES

✓ Copyright, 1896, by
TAYLOR & PRESWICK,
The Corner Bookstore,
Ithaca, N. Y.

THE ALBERTYFF CO., N. Y.



F129
.I816



ITHACA FROM SOUTH HILL.



POST OFFICE AND STATE STREET.

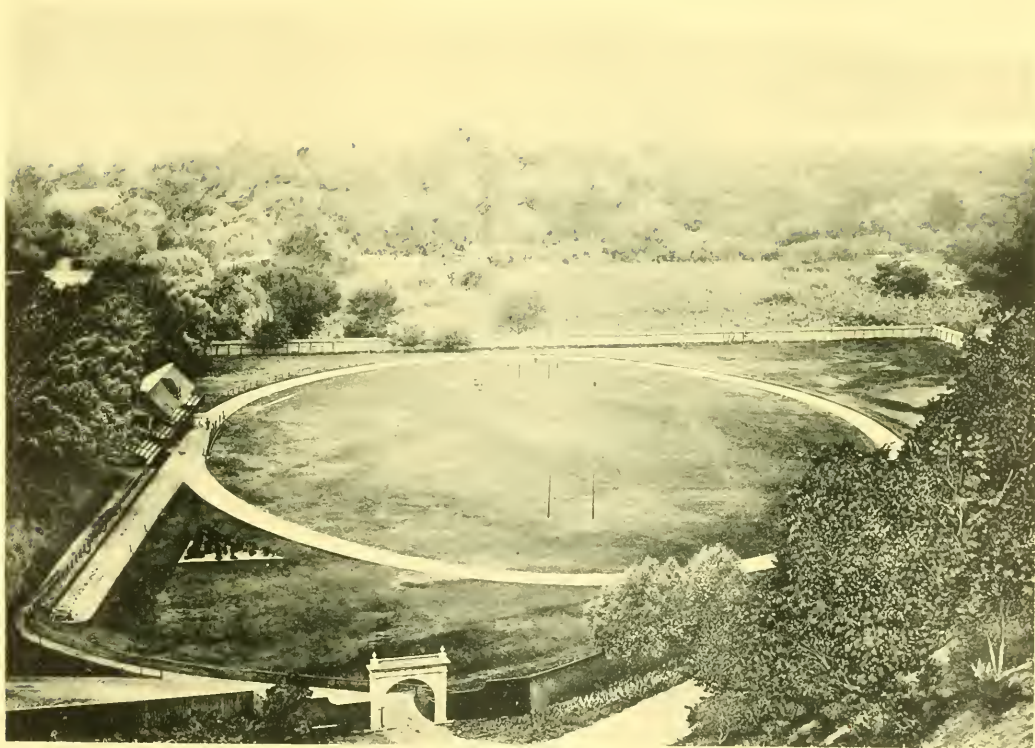


STATE STREET.

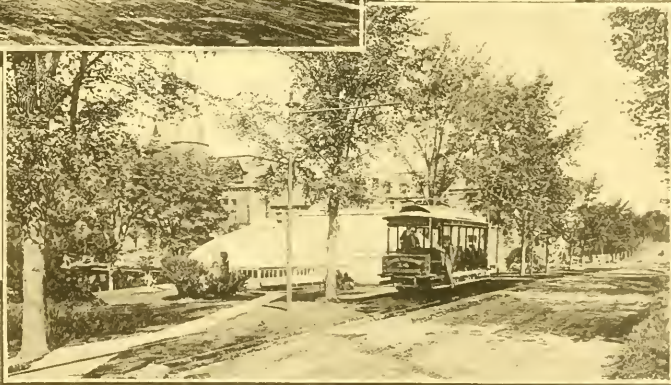
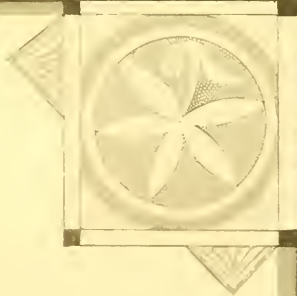
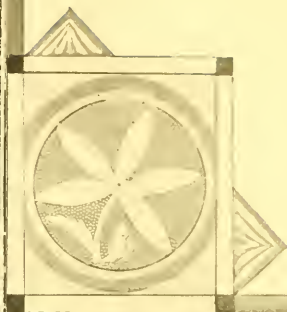


STATE STREET M. E. CHURCH.

UNITARIAN CHURCH & N. AURORA STREET.

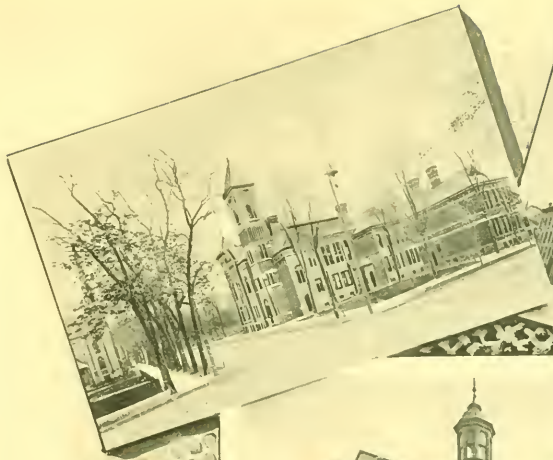


ATHLETIC FIELD—CORNELL UNIVERSITY.



ALONG THE CAMPUS.





HIGH SCHOOL.

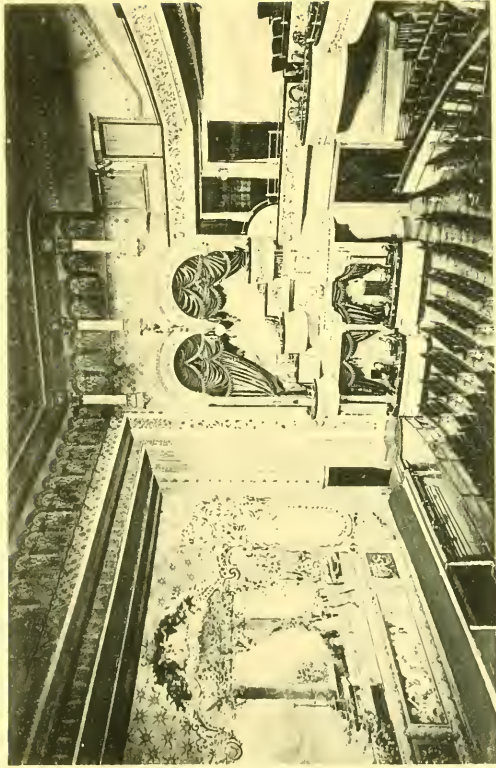
TRUST CO. AND ITHACA SAVINGS BANK.

CORNELL LIBRARY AND MASONIC TEMPLE



CITY HOSPITAL.

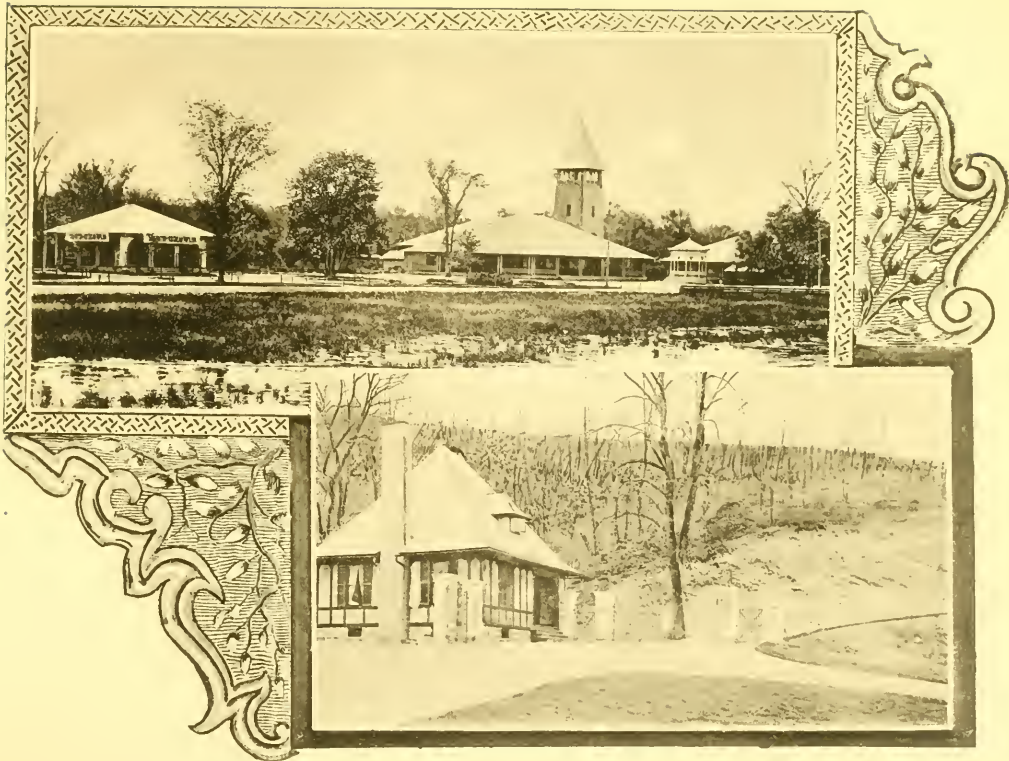
S. ALBANY STREET.



INTERIOR OF LYCEUM.

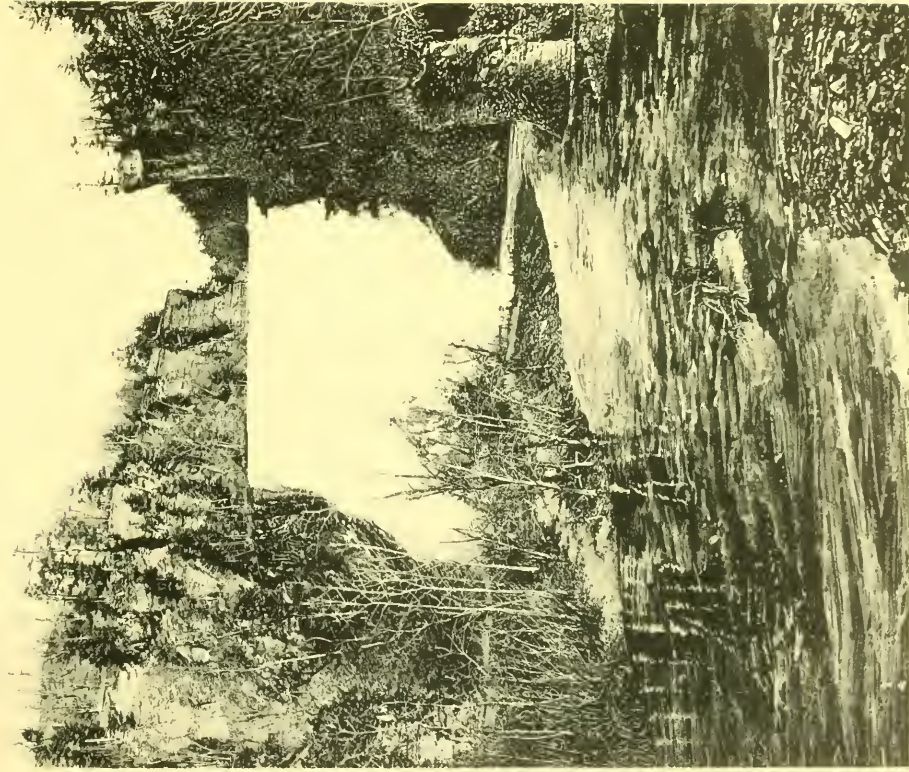


CLINTON HOUSE.



RENWICK PARK.

ENTRANCE TO LAKE VIEW CEMETERY.

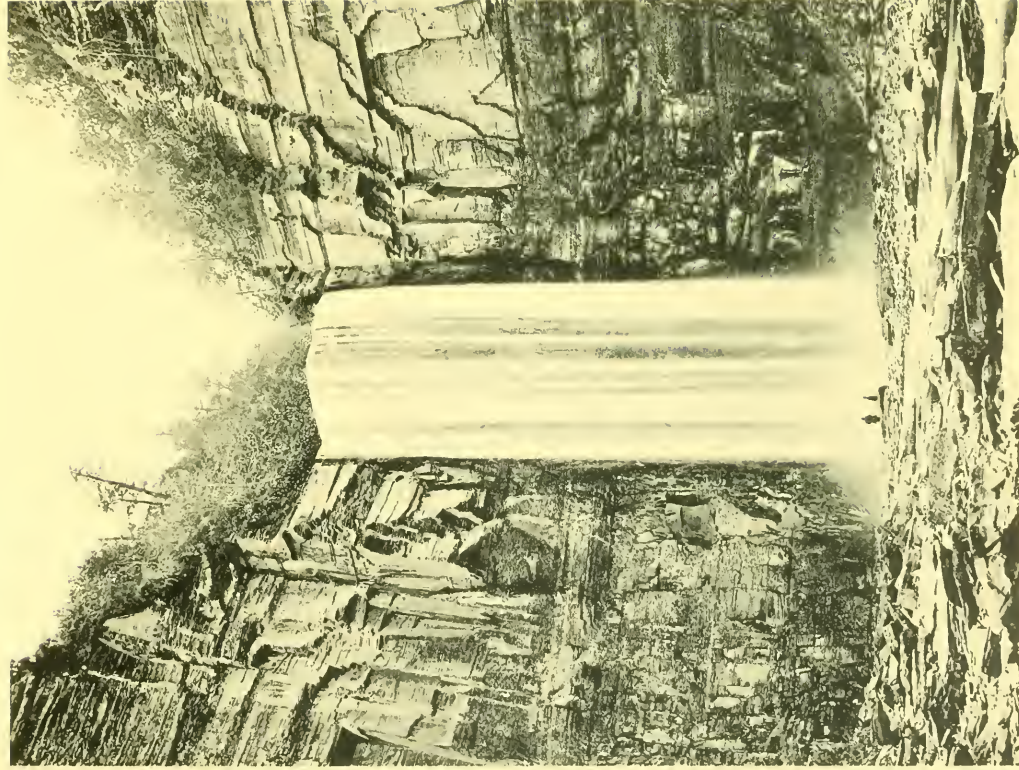


MAIN FALL, ITHACA GORGE



FLUME FALL.

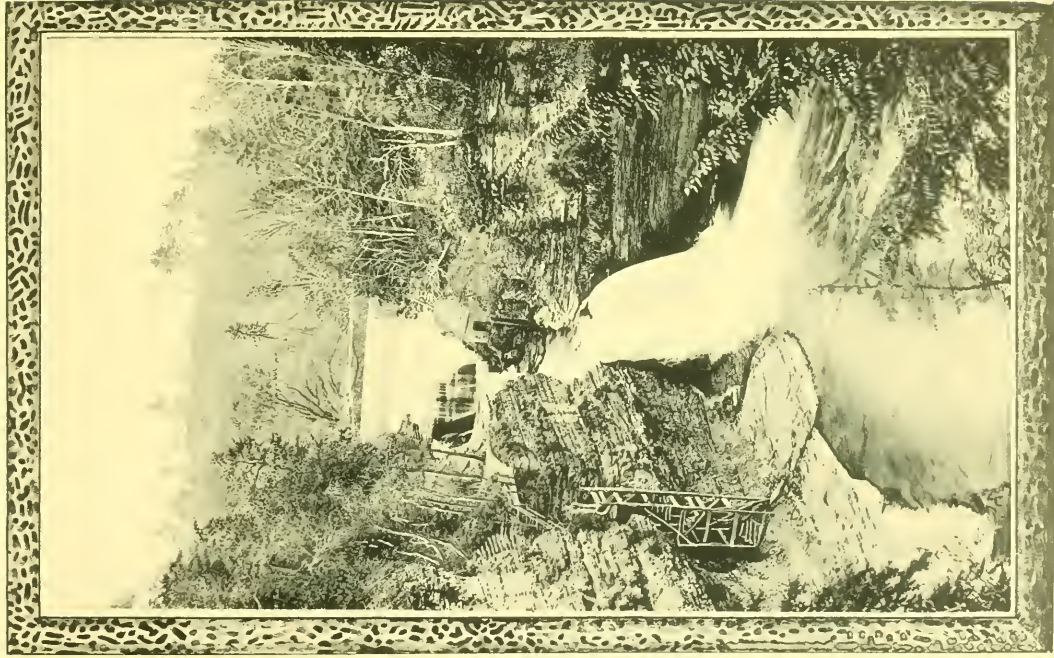
SWINGING BRIDGE.



TAUGHANNOCK FALLS.



IN TAUGHANNOCK RAVINE.

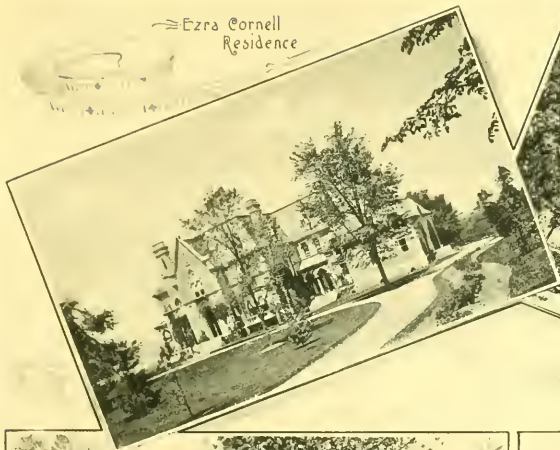


TRIPHAMMER AND FLUME.



WINTER SCENES.

⇒ Ezra Cornell
Residence



⇒ Henry W Sage
Residence.



HON. ANDREW D. WHITE'S RESIDENCE.

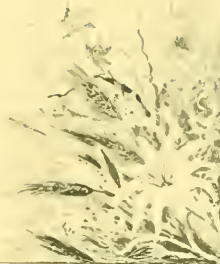


PRES. J. G. SCHURMAN'S RESIDENCE.



CAYUGA LAKE.

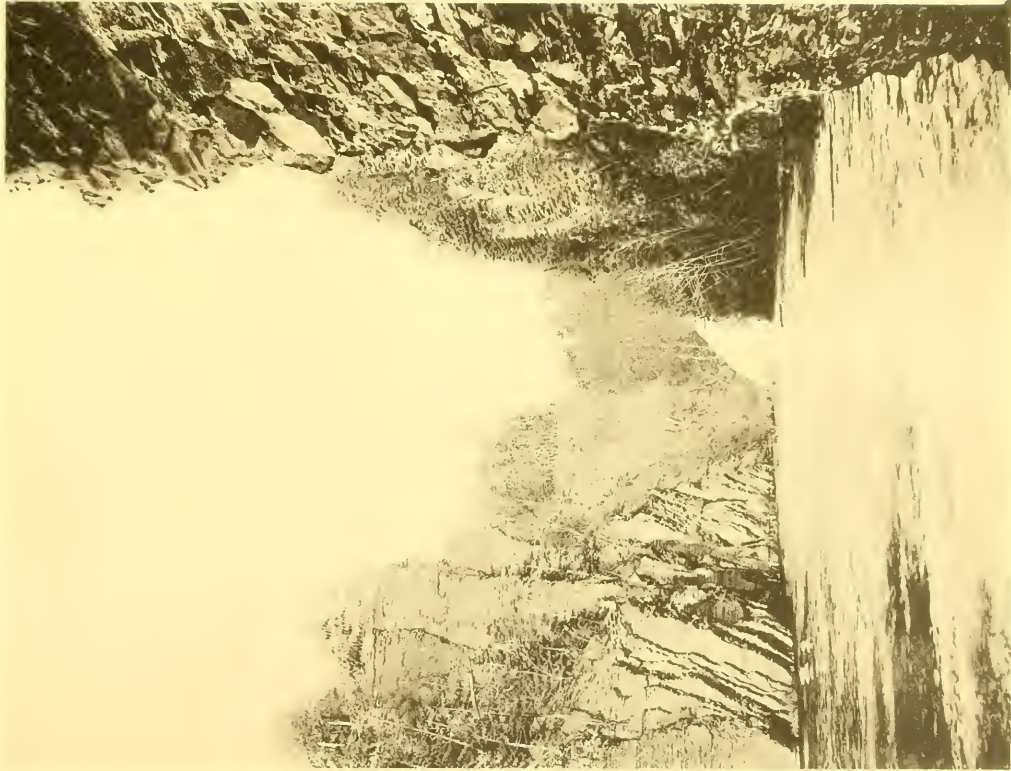
FISKE MANSION.



CASCADILLA SCHOOL

BOAT HOUSE.

CASCADILLA SCHOOL



FOREST FALL.



TUNNEL—ITHACA GORGE.

CASCADILLA BRIDGE.

WILLOW AVENUE.

HK196-78



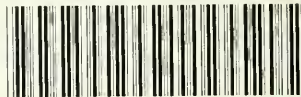


MAY 78



N. MANCHESTER,
INDIANA

LIBRARY OF CONGRESS



0 014 109 214 5

