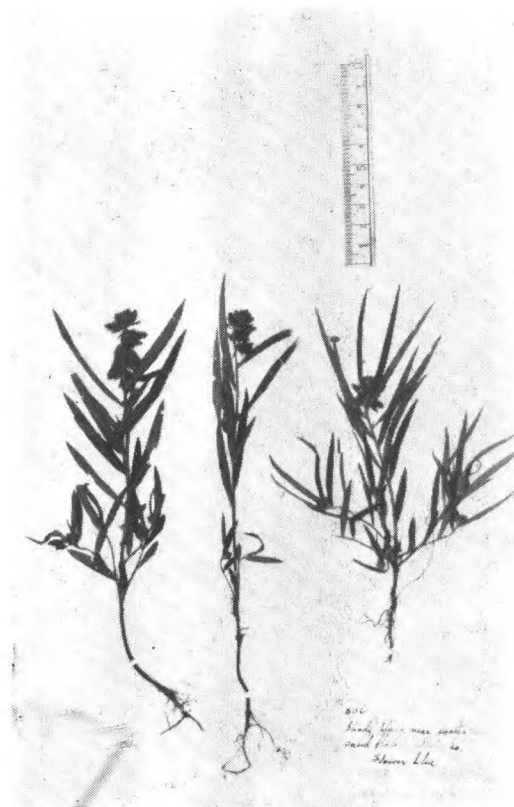




Crotalaria saltiana Andr.
Tsiang 865, 广东



Crotalaria sessiliflora Linn.
N. H. Cowdry 506 河北北戴河

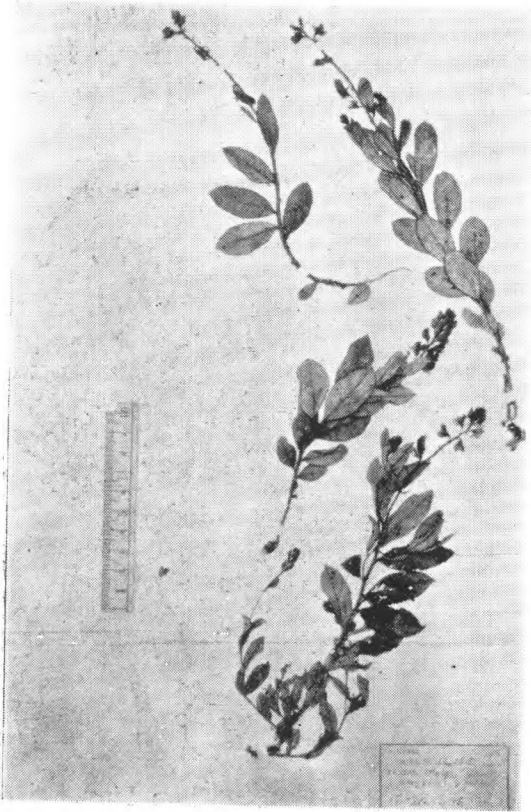


Crotalaria tetragona Roxb.
Henry 10181. 云南蒙自江河谷



Crotalaria uncinella Lam.
Lau, 475 海南

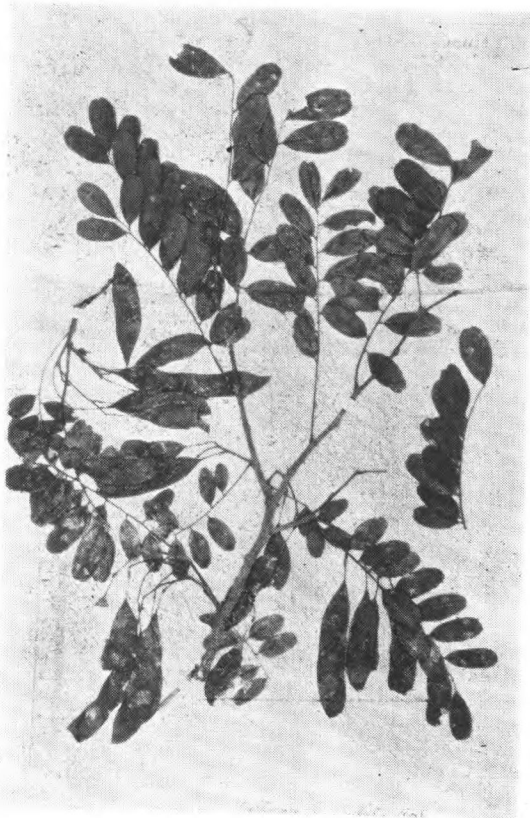
黄檀屬 *Dalbergia* L. f.



Croton yunnanensis Franch.
Henry 10155 云南蒙自



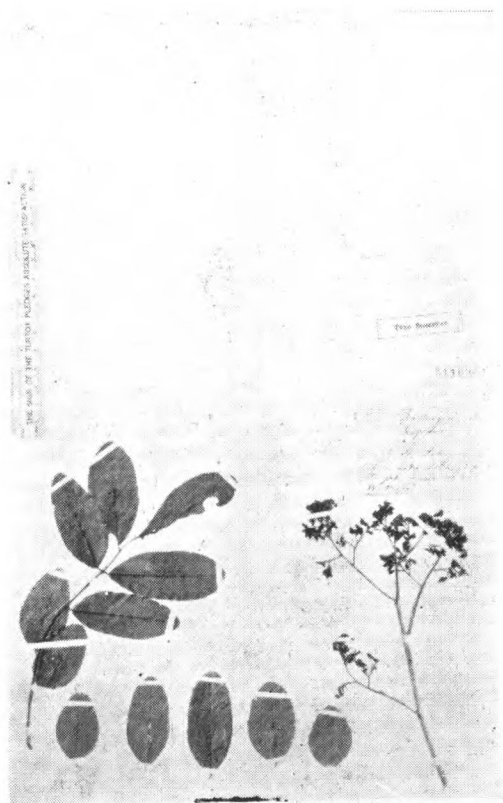
Dalbergia Balansae Prain
Balansa 2289 (isotype) Tonkin (东京)
Monte Bavi



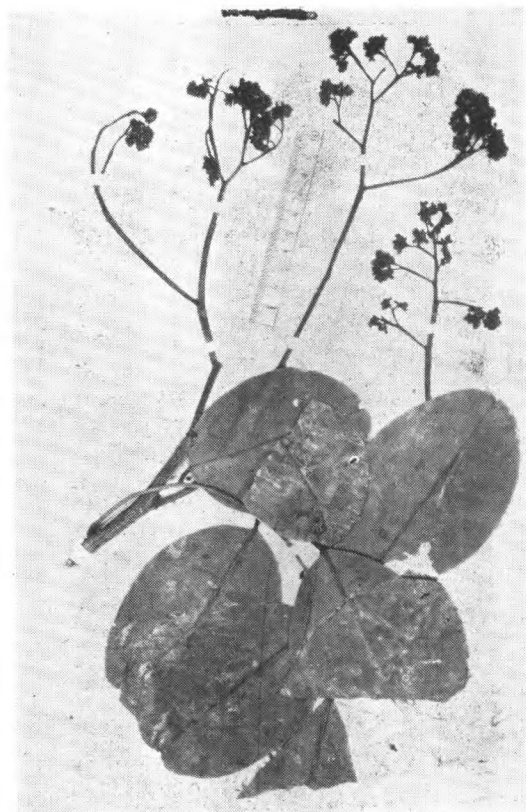
Dalbergia fusca Pierre
Henry 11667B. 云南思茅



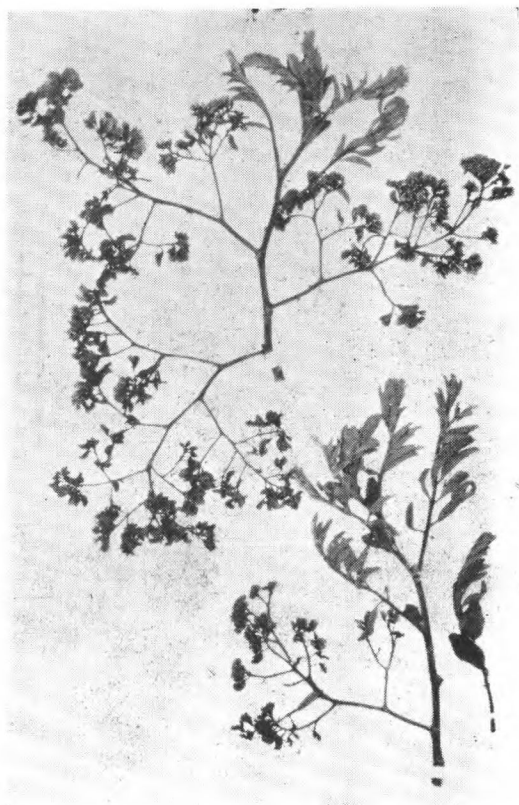
Dalbergia Henryana Prain
Henry 11248 (type) 云南蒙自东南



Dalbergia hupehensis Hance
Walter's Herb. Hance 21189 (type)
湖北宜昌



Dalbergia obtusifolia Prain
Henry 13287 (type) 云南思茅

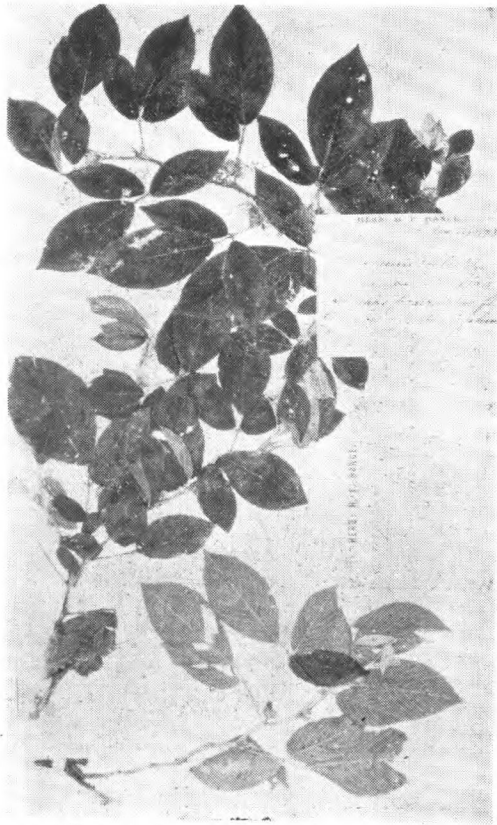


Dalbergia szemaensis Prain
Henry 11895 (type) 云南思茅西山



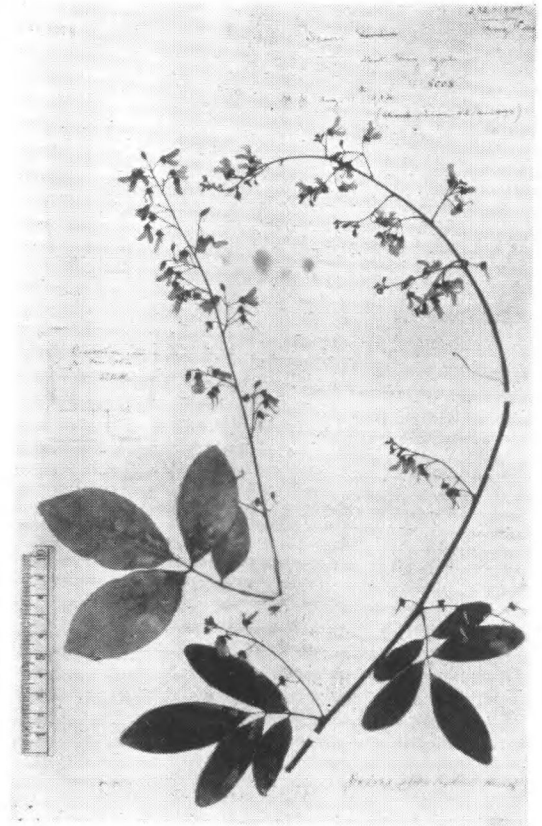
Dalbergia yunnanensis Franch.
Henry 10205 云南蒙自北山

Dendrolobium Bth.



Dendrolobium triangulare (Retz.)
Schindl.
Sampson in Herb. Hance 4875 广东西江

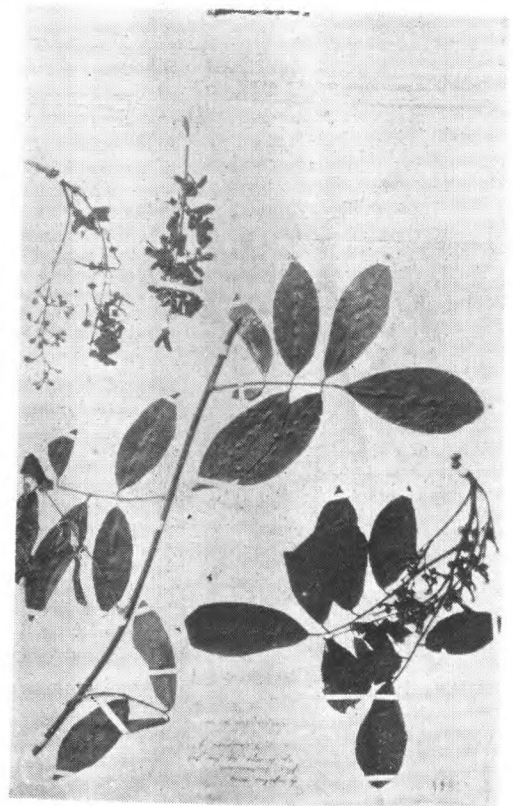
魚藤屬 *Derris* Lour.



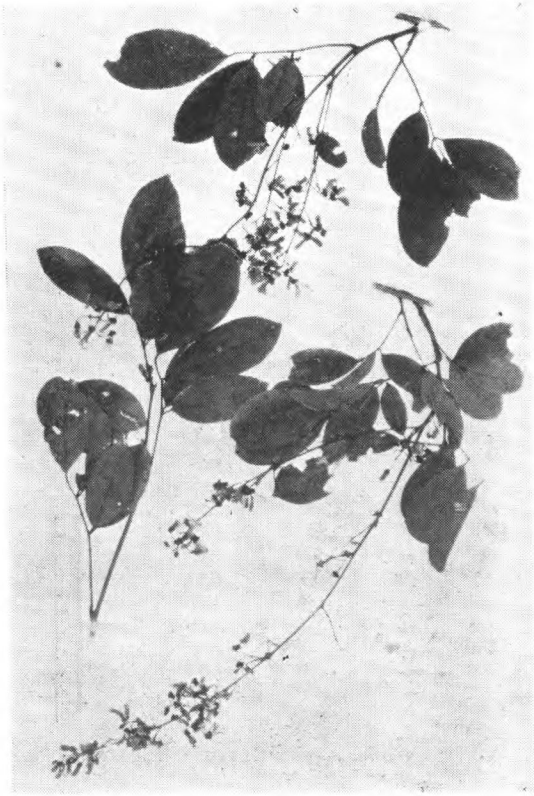
Derris alborubra Hemsl.
Bot Mag. t. 8008 (type)



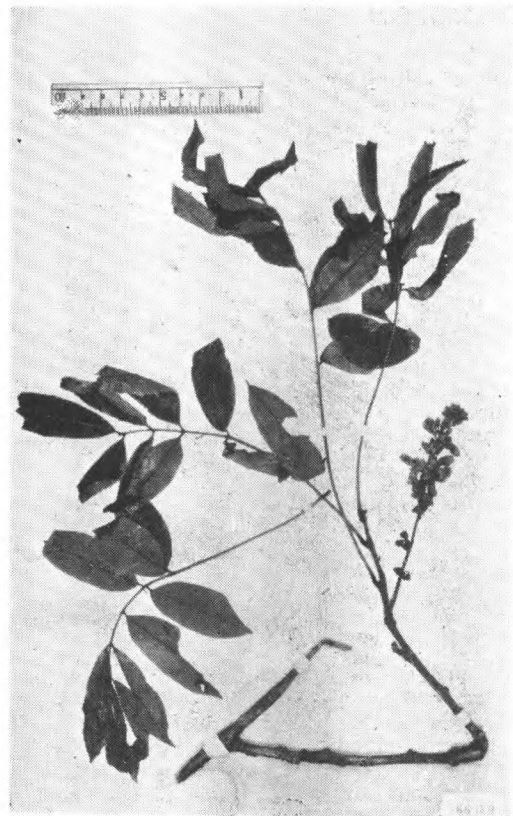
Derris Fordii Oliv.
Ford 58 (type) 广东



Derris Hancei Hemsl.
Sampson in Herb. Hance (type) 珠江

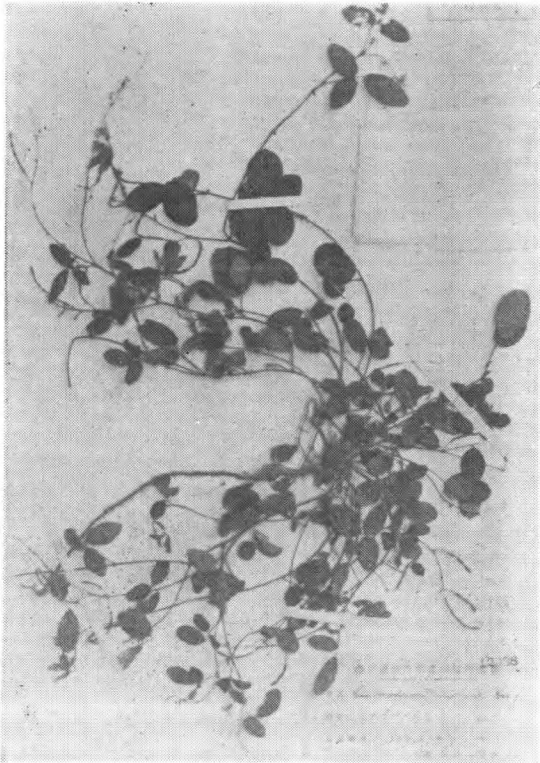


Derris laxiflora Bth.
Ford. 499 (type) 台湾西北

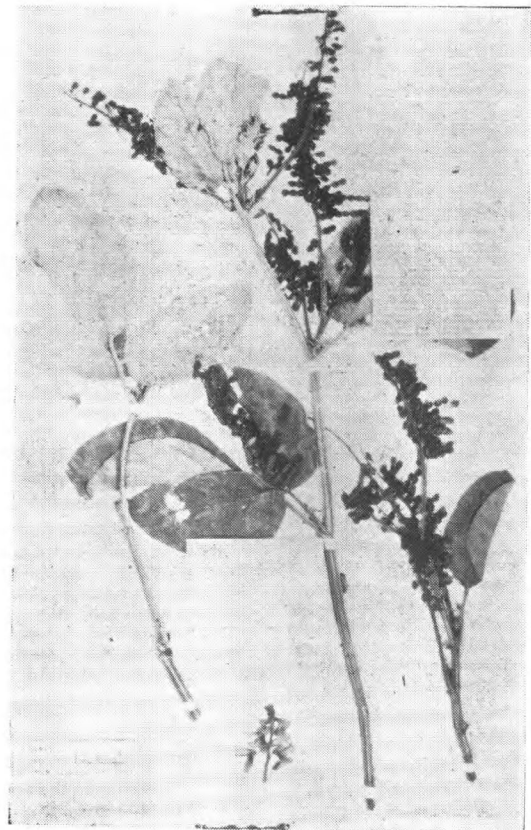


Derris scabricaulis (Franch.) Gagnep.
Delavay 2563. (isotype.) 云南大坪子

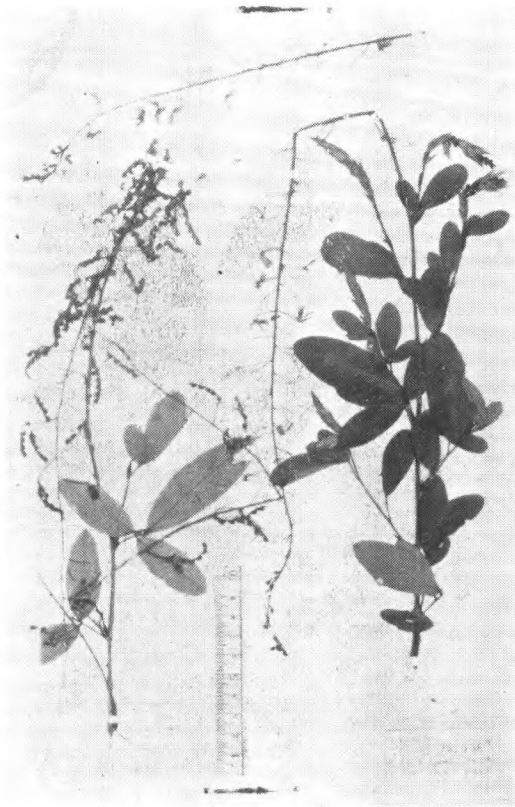
山馬蝗屬 *Desmodium* Desv.



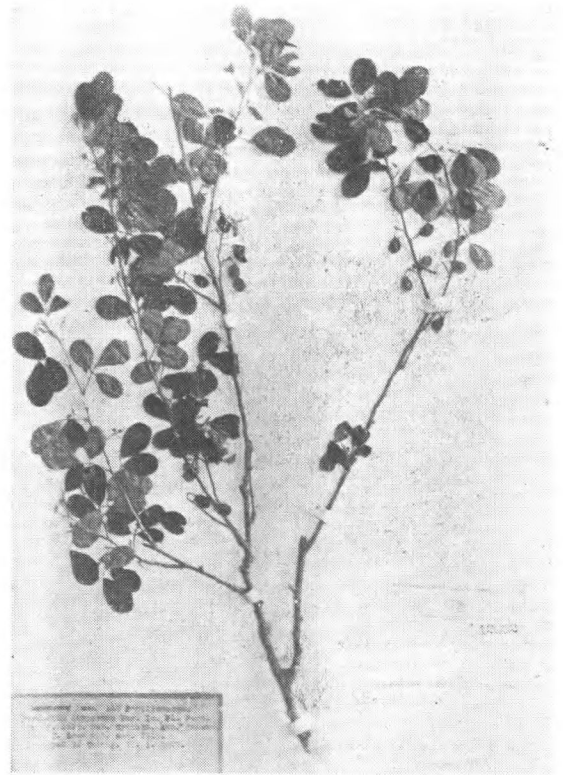
Desmodium akoense Hay.
Y. Matsuda 95, (isotype) Ako, 台湾



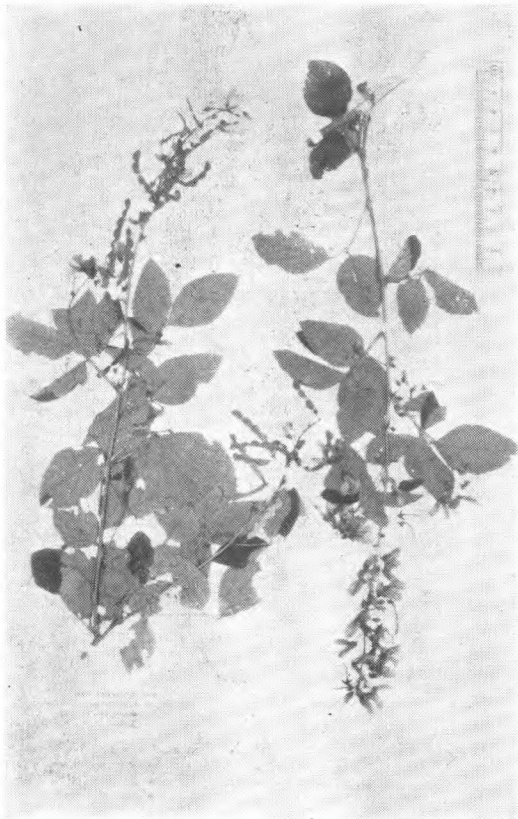
Desmodium amethystinum Dunn
Henry 12614B. (type) 云南思茅



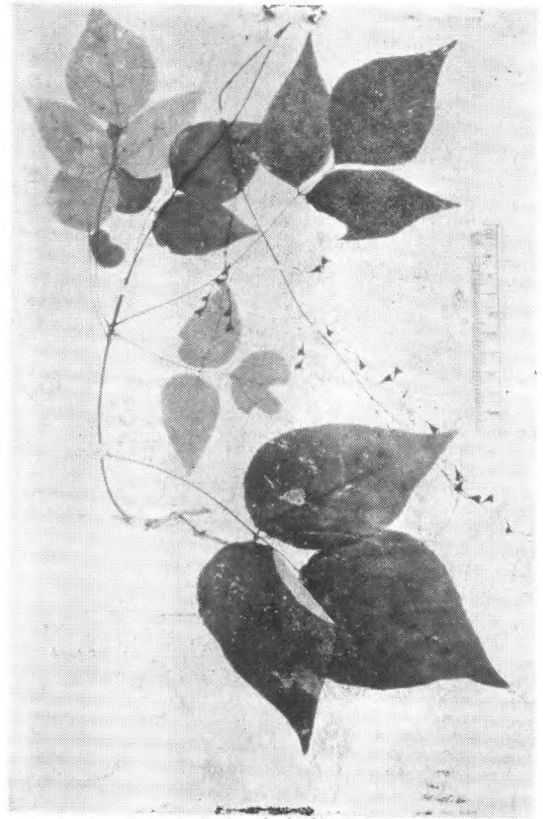
Desmodium concinnum DC.
Henry 12, 436a. 云南思茅西山



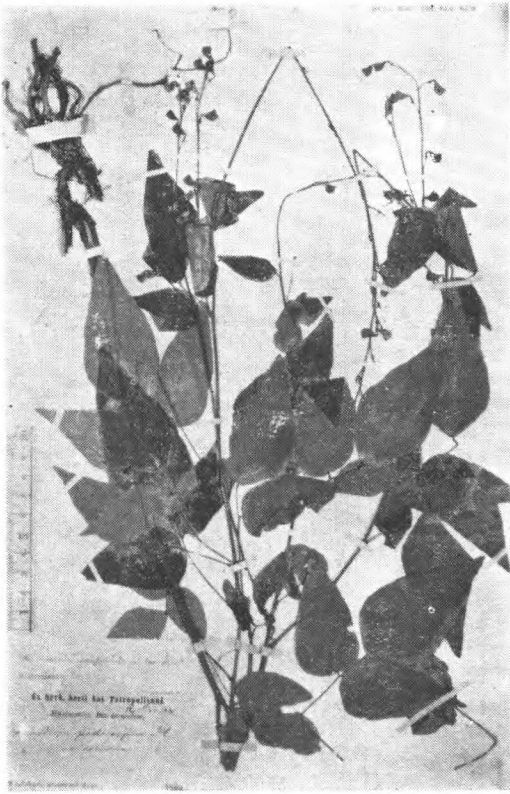
Desmodium dispernum Hay.
T. Soma 423, (isotypus) Ako, 台湾



Desmodium Esquirolii Lévl.
Schneider 3230. 云南丽江石鼓



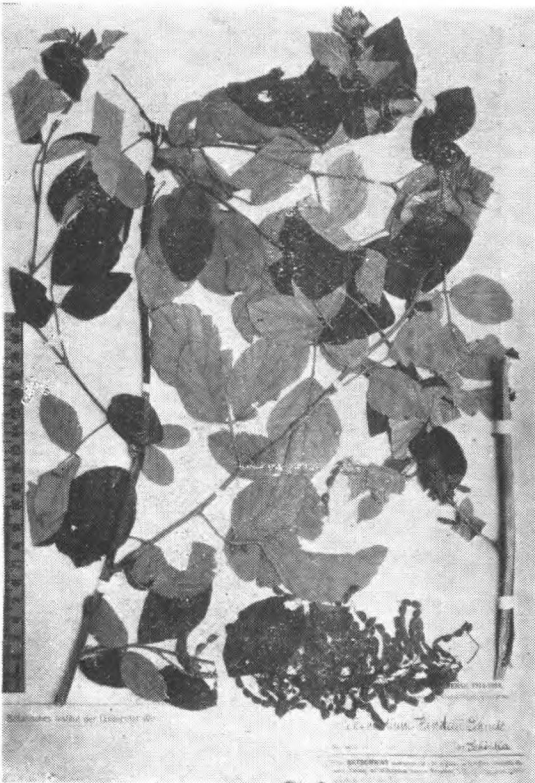
Desmodium fallax Schindl.
Henry 6449a, 湖北房县



Desmodium fallax Schindl. var.
manshuricum (Max.) Nakai
Maxim. (isotype) 东北 (东南)



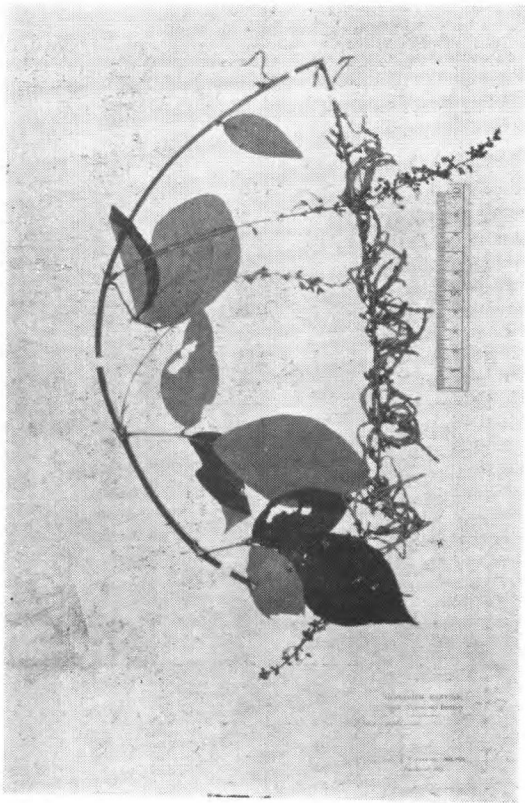
Desmodium gangeticum (L.) DC.
Hance 446 香港, Playfair 222 台湾



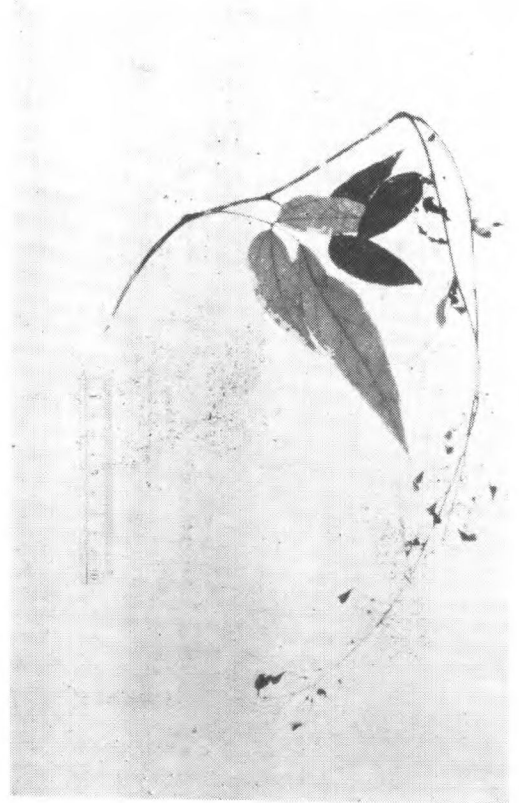
Desmodium Handelii Schindl.
H.-M. 2113. (type) 西康雅石龙口谷



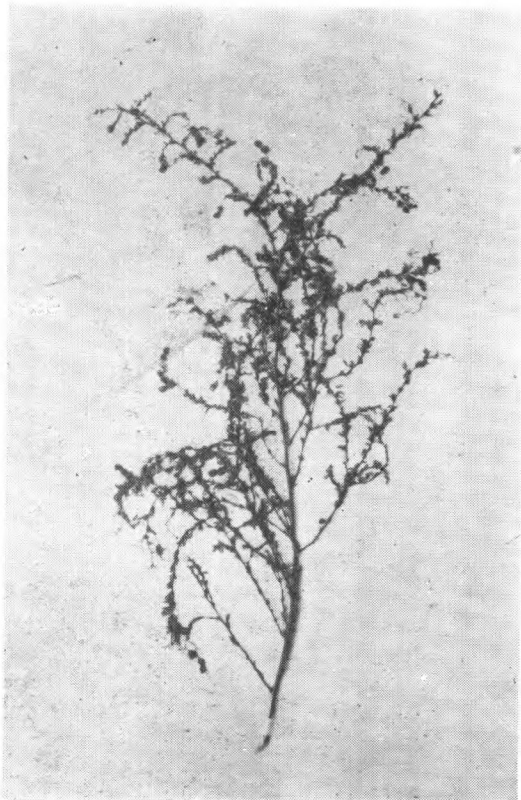
Desmodium heterocarpum (Linn.) DC.
Parkers 80. 广东, Champ. 517,
C. Wright 香港



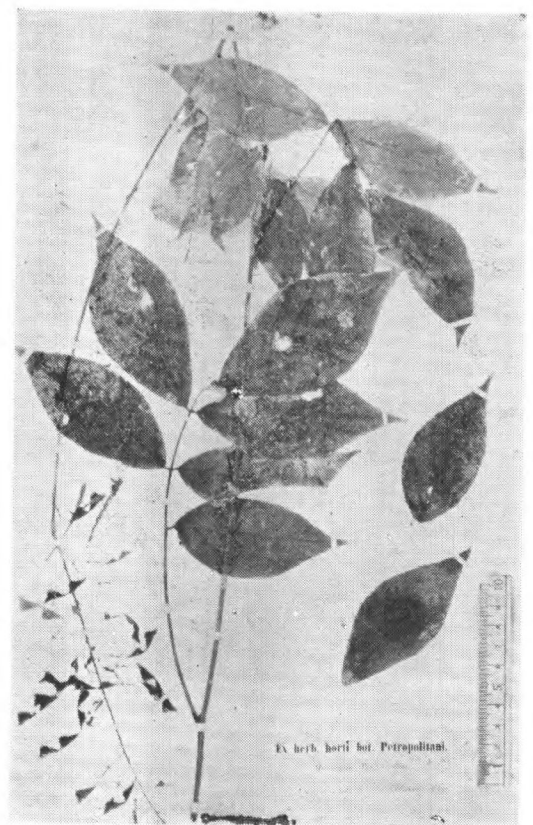
Desmodium laxiflorum DC.
Cavalerie 4287. 云南



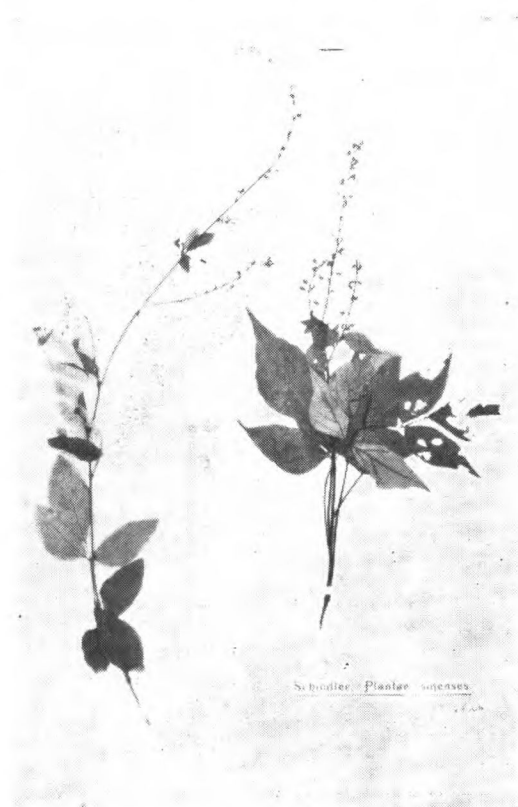
Desmodium laxum DC.
W. R. Price 939. 台湾阿里山



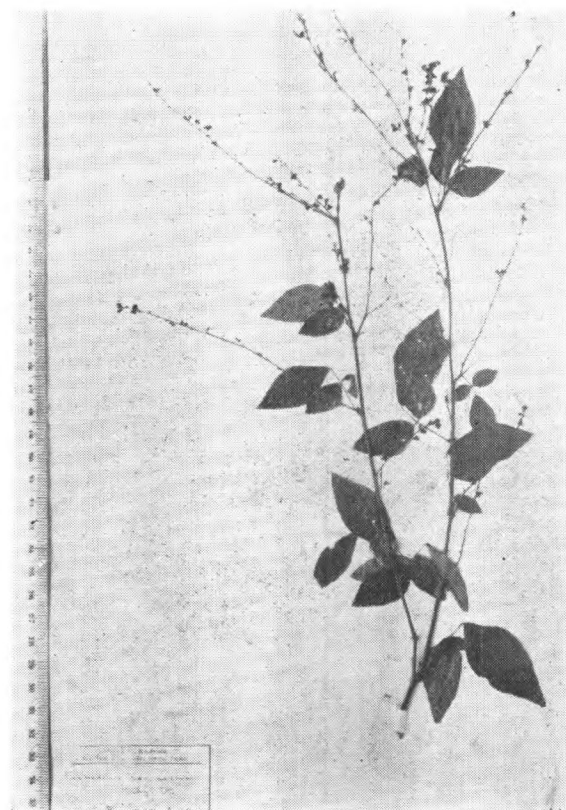
Desmodium microphyllum (Thbg.) DC.
Thbg. (holotype)



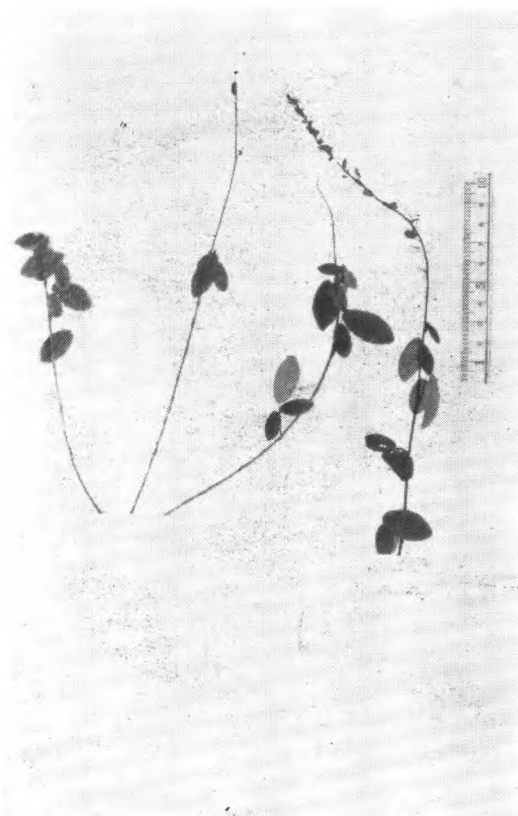
Desmodium Oldhami Oliv.
Maxim, 东北



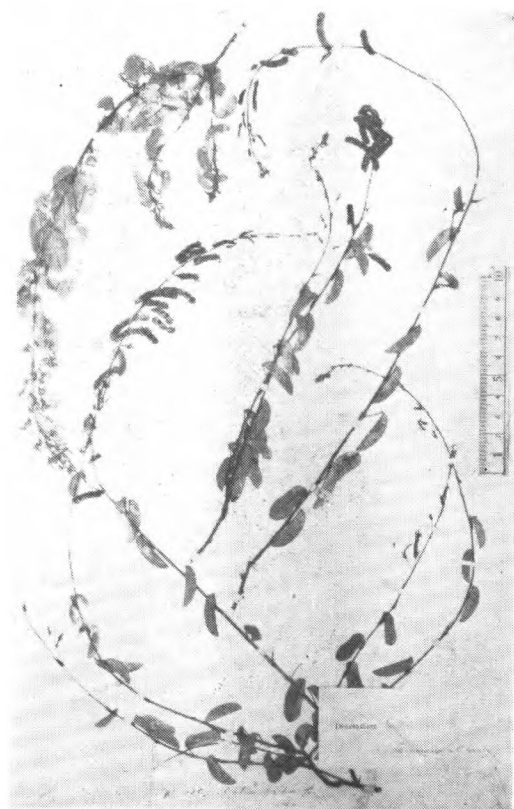
Desmodium podocarpum DC.
Schneider 309a. 江西廬山牯岭



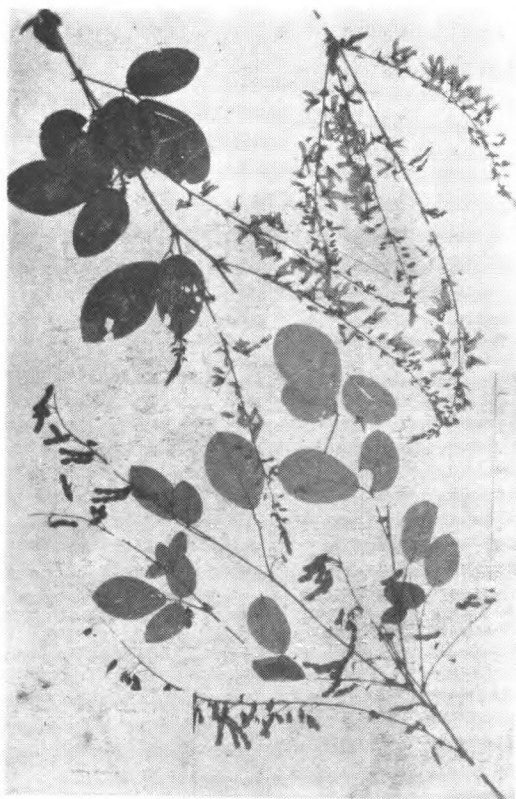
Desmodium racemosum (Thbg.) DC.
Thbg. (type) 日本



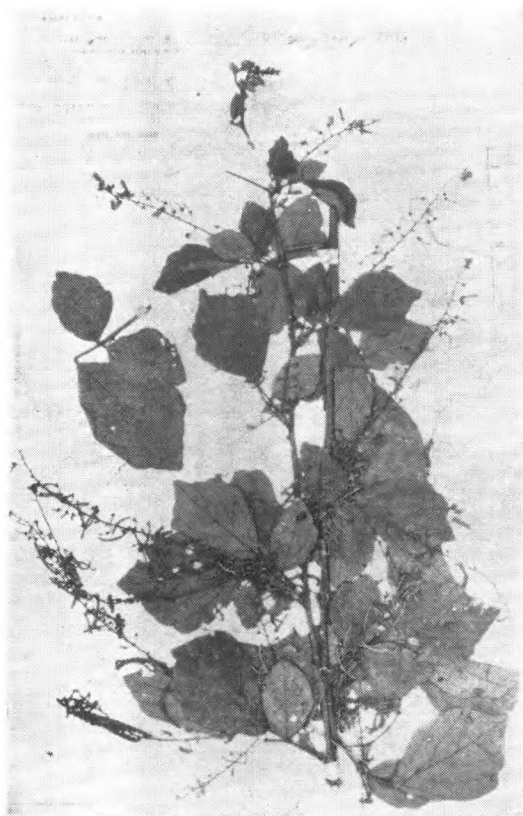
Desmodium reticulatum Champ.
Wright 128, Champ. 254 (type) 香港



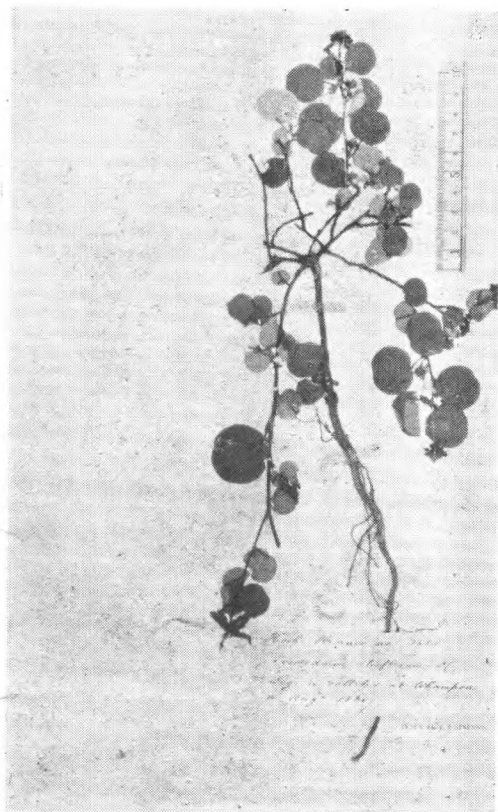
Desmodium rubrum (Lour.) DC.
Playfair 38 (type?) 广东北海



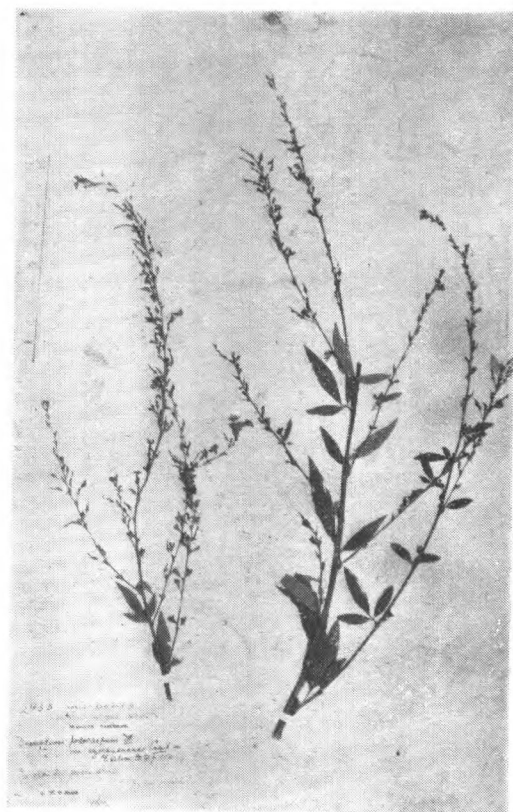
Desmodium sambuense (D. Don) DC.
Wils. 1079A. 湖北



Desmodium sequax Wall.
Delavay 3015. 云南 (近大坪子)



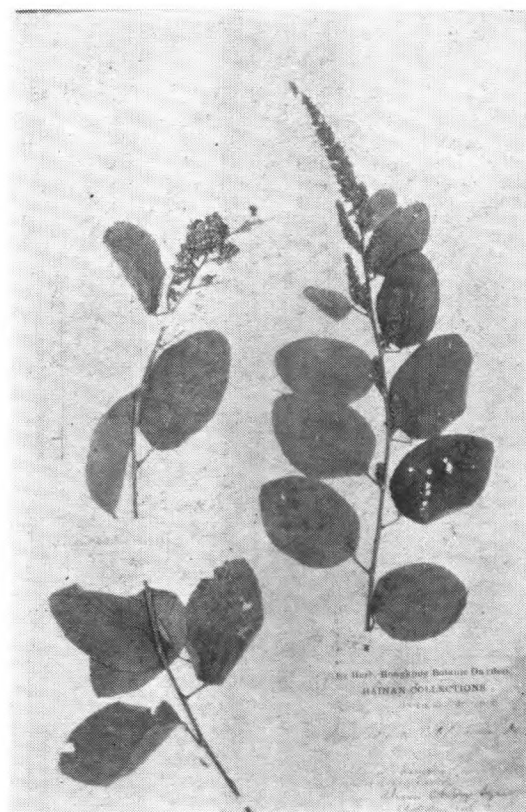
Desmodium styracifolium (Osbeck) Merr.
Herb Hance 3883. 广东黄埔



Desmodium szechuenense (Craib) Schindl.
Wils. 2933. 四川雅州府

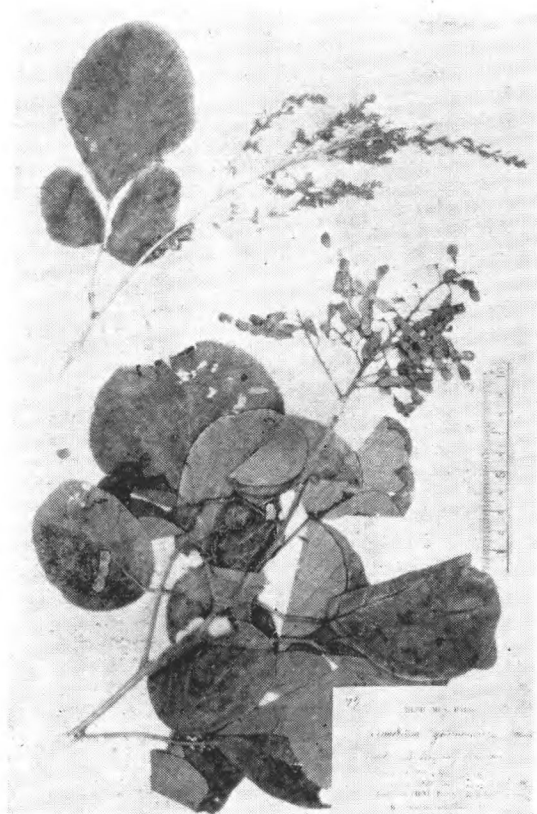


Desmodium triflorum (Linn.) DC.
Wright 127. 香港

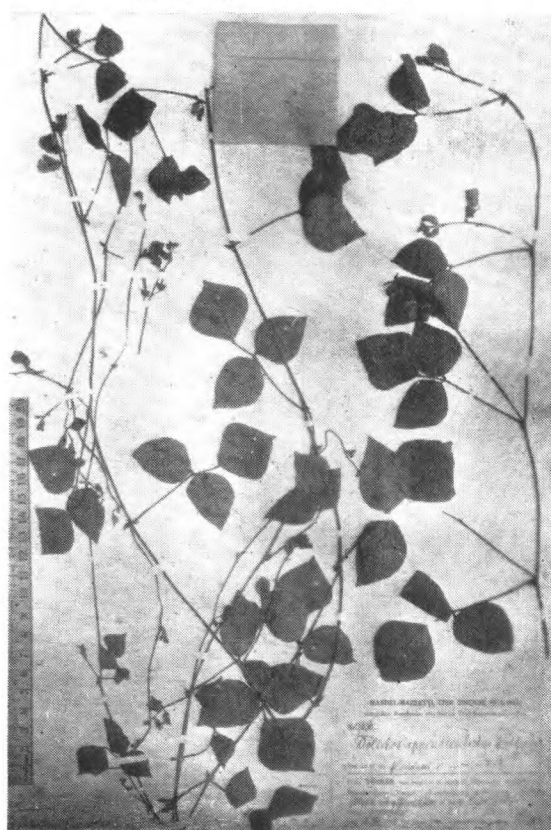


Desmodium velutinum (Willd.) DC.
Ford 498, 香港 376. 海南

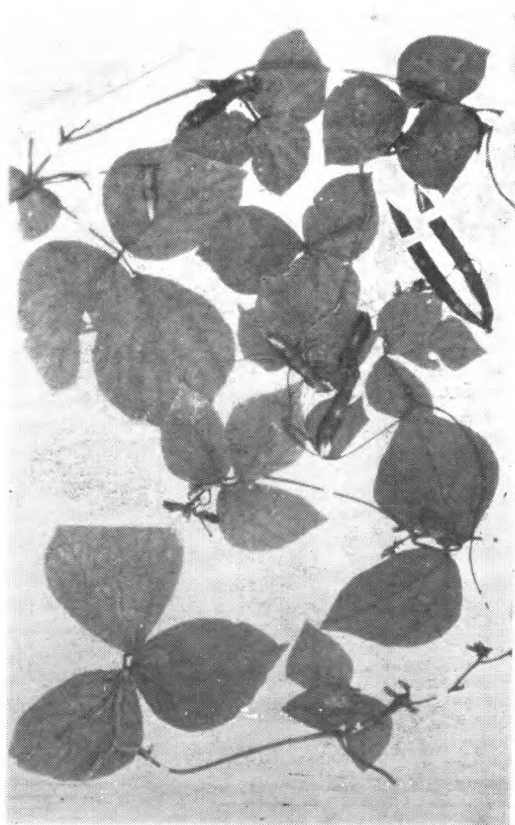
蘿豆屬 *Dolichos* L.



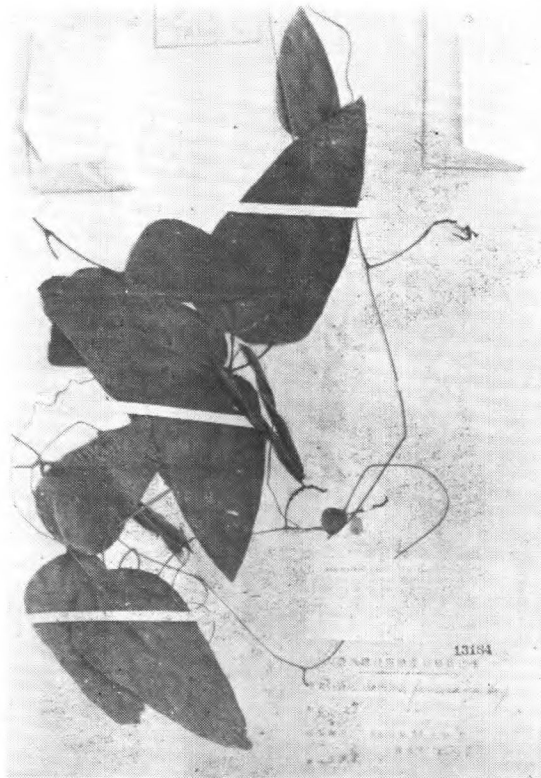
Desmodium yunnanense Franch.
Delavay 1985. 云南大坪子



Dolichos appendiculatus H.-M.
H.-M. 7636. (type) 云南丽江金沙江边

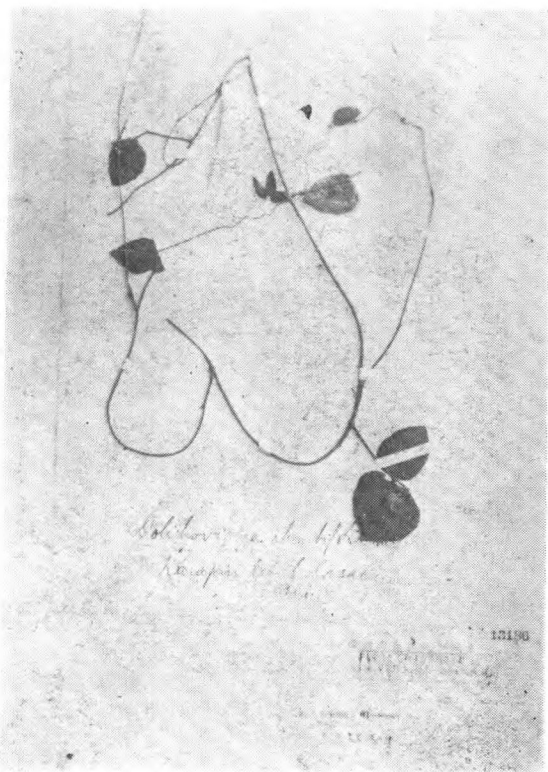


Dolichos Lagopus *Dunn*
Henry 12378 (syntype.) 云南思茅

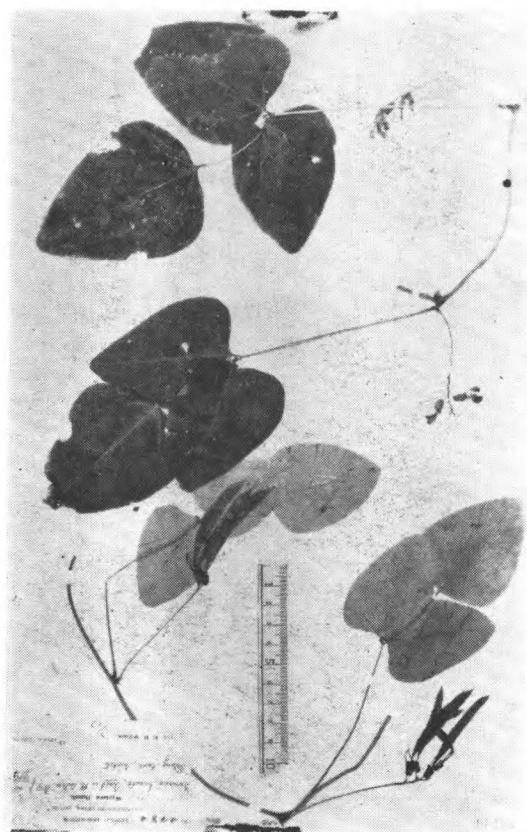


Dolichos pilosus *Klain*
Y. Matsuda 无号 (isotype.) Kiukyokudo
台湾

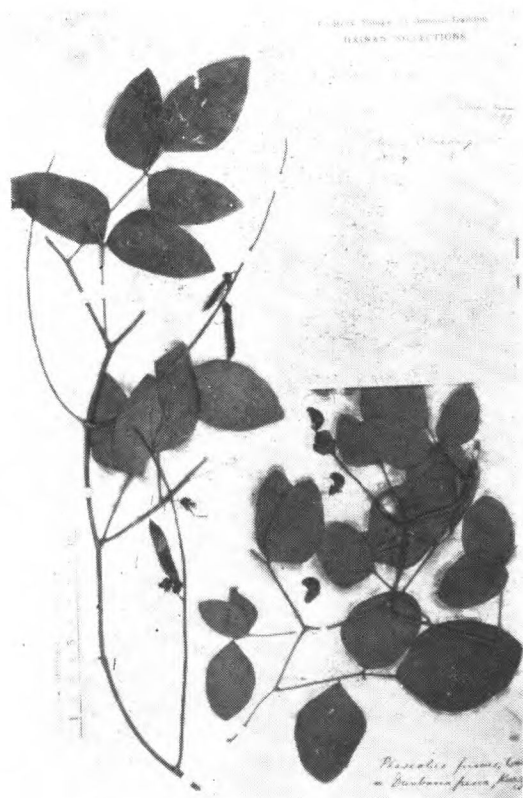
小雞藤屬 *Dumasia* *DC.*



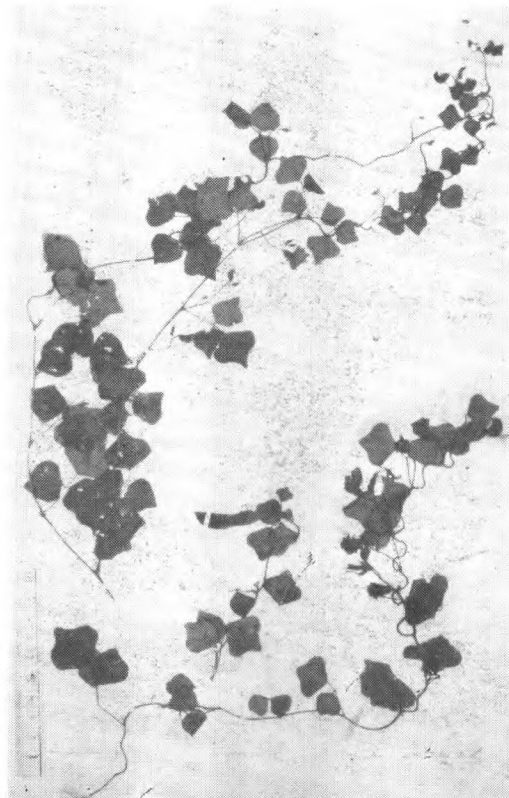
Dolichos rhombifolius (*Hay.*) *Hosok.*
S. Sasaki 无号 (isotype) Karapin,
Kagi, 台湾



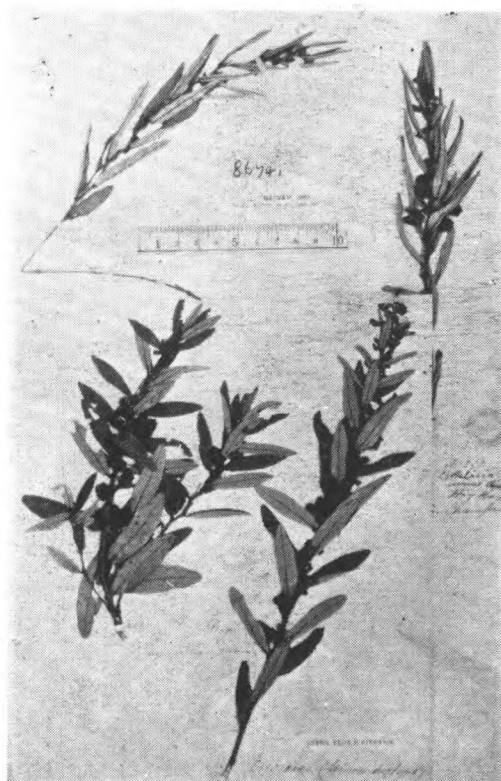
Dumasia hirsuta *Craib*
Wils. 3483. (isotype) 湖北巴东

野扁豆屬 *Dunbaria* Wight et Arn.

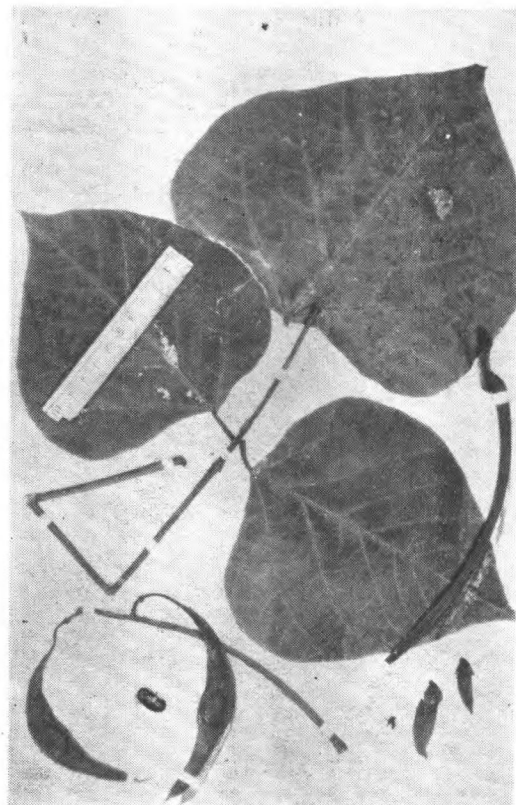
Dunbaria fusca (Wall.) Kurz.
Ford 358 海南



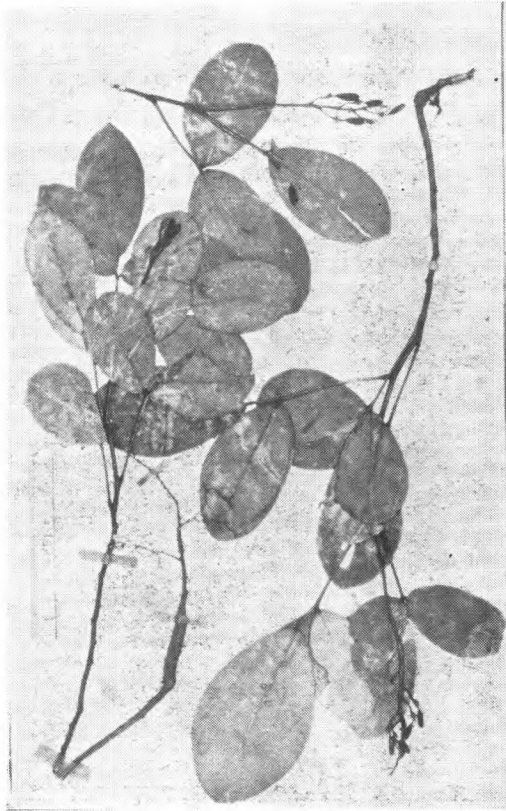
Dunbaria villosa (Thbg.) Makino
E. Faber 浙江宁波

毛瓣花屬 *Eriosema* Desv.

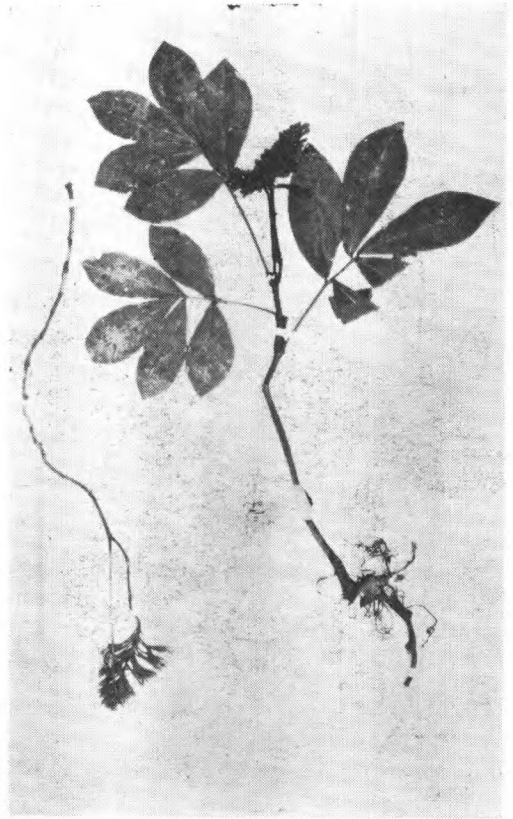
Eriosema chinense Vogel
Champ. 252, 香港 Henry 8674 海南

刺桐屬 *Erythrina* Linn.

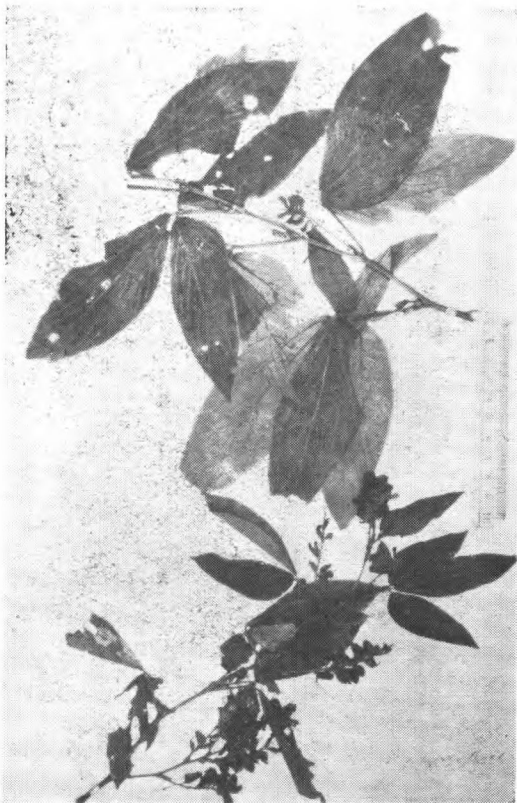
Erythrina arborescens Roxb.
Henry 10061. 云南蒙自

山豆根屬 *Euchresta* Benn.

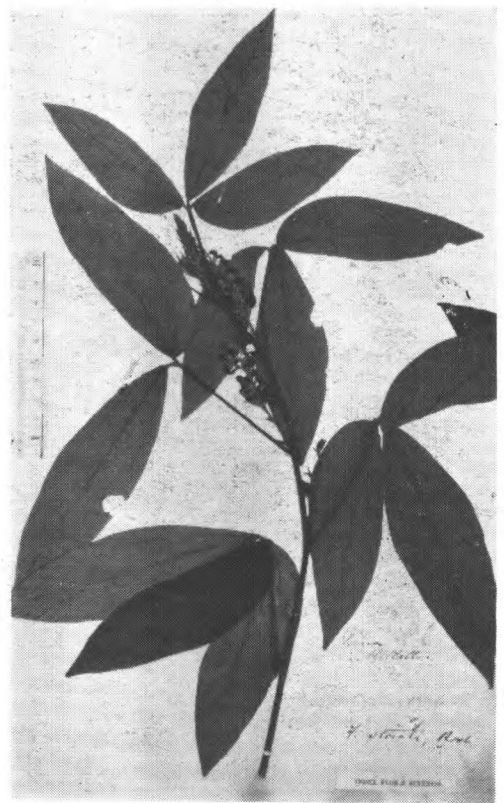
Euchresta japonica Oliv.
Oldham 385 (type) 日本长崎



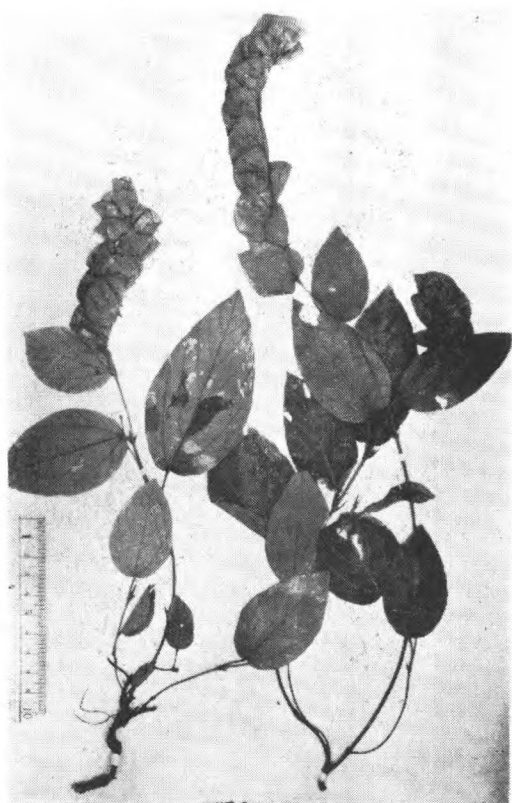
Euchresta tubulosa Dunn
Wils. 1175. 湖北

千斤拔屬 *Flemingia* Roxb. ex Aiton

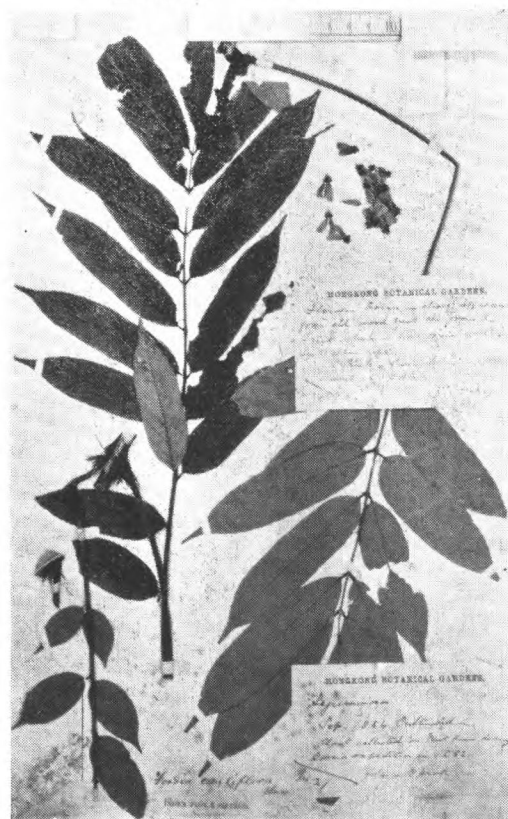
Flemingia macrophylla (Willd.) O.Ktze.
Sampson. 广东西江



Flemingia stricta Roxb.
Millett 中国

福特木屬 *Fordia* Hemsl.

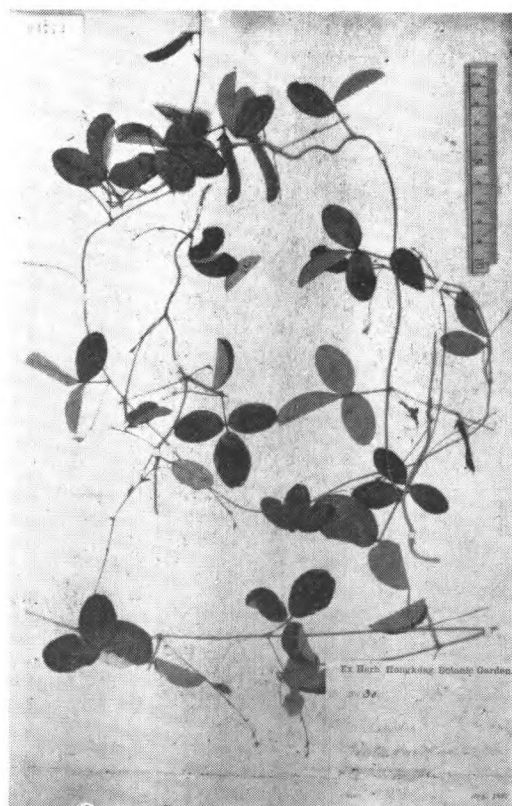
Flemingia strobilifera (Linn.) R. Br.
Ford 31 广东



Fordia cauliflora Hemsl.
Ford 21 (type) 广东西江

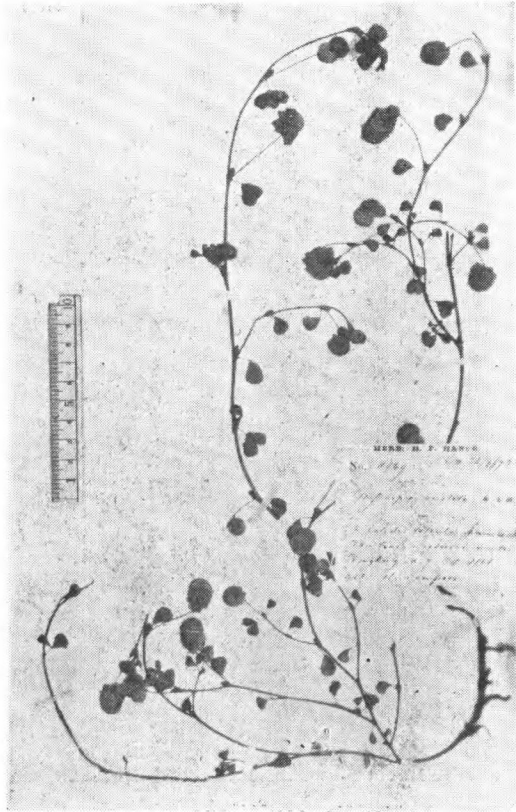
乳豆屬 *Galactia* P. Browne.

Fordia microphylla Dunn
Henry 9439 云南蒙自



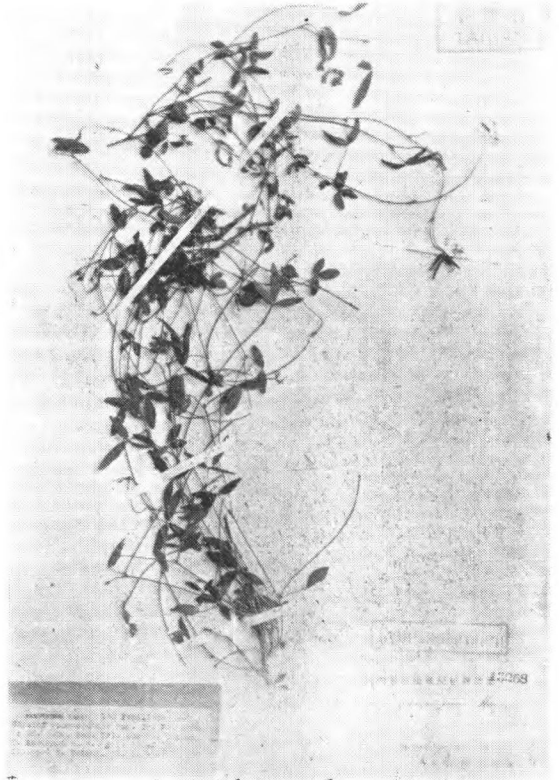
Galactia tenuiflora Willd. ex Wight et
Arn.
Ford 30. 广东

苞覆花屬 *Geissaspis* Wight et Arn.

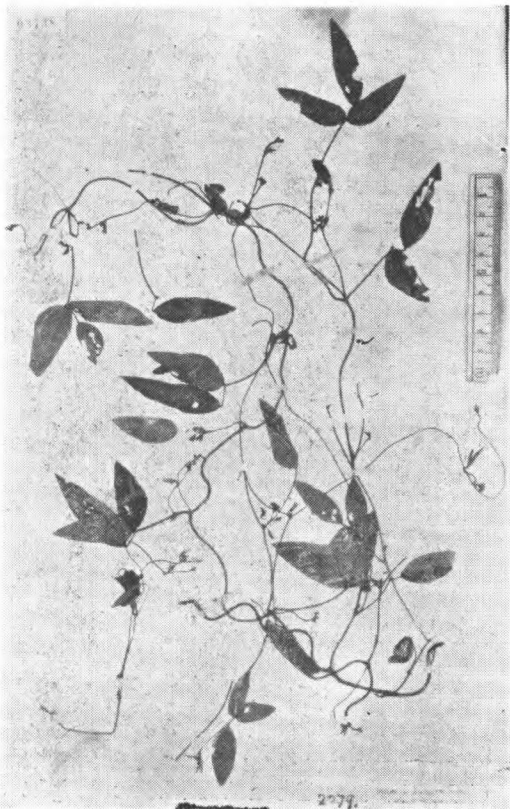


Geissaspis cristata Wight et Arn.
Sampson 8069. 广东九龙半島

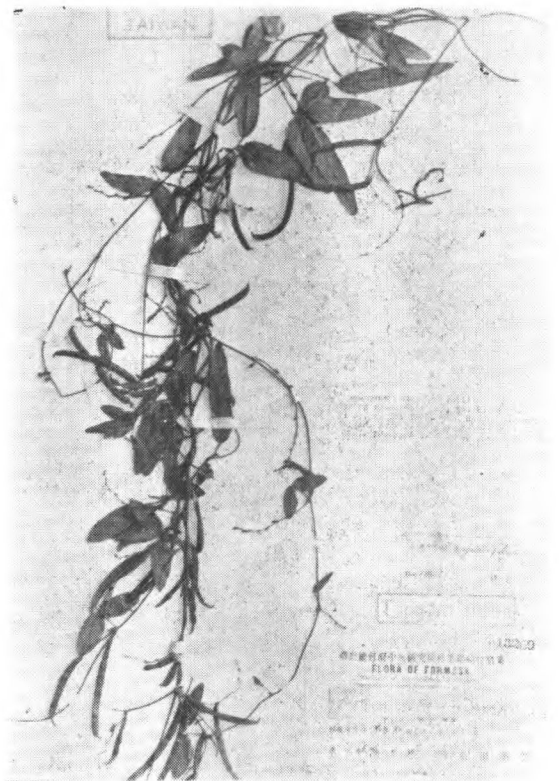
大豆屬 *Glycine* Linn.



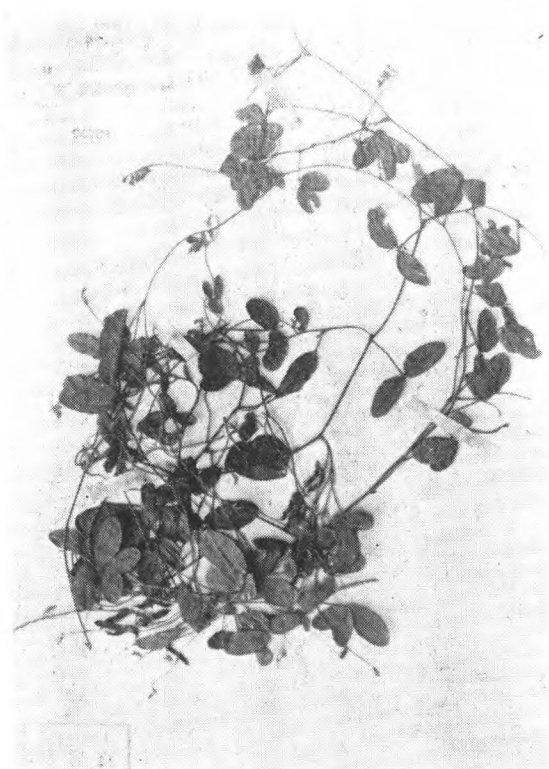
Glycine pescarensis Hay.
T. Kawakami 无号 (isotype)
台湾 (Bokoto, Taiwan)



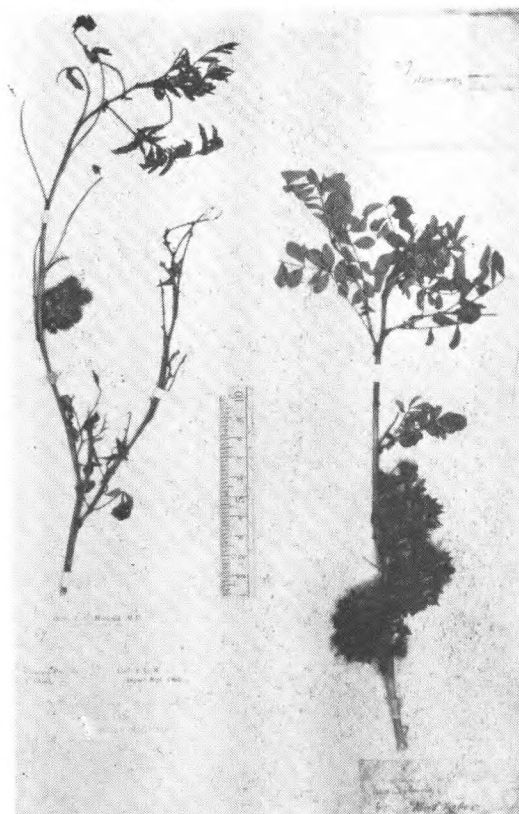
Glycine Soja S. et. Z.
Henry 2279 湖北宜昌



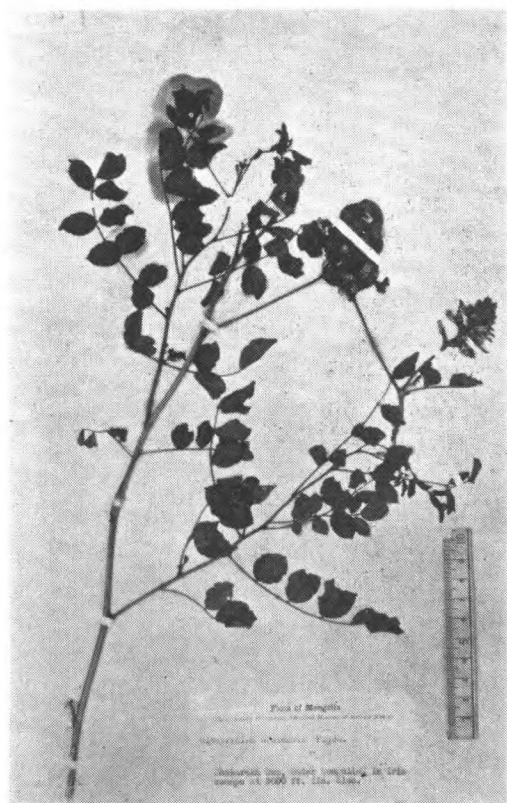
Glycine subonensis Hay.
Y. Matsuda 无号 (isotypus) Subon-sha,
Ako, 台湾

甘草屬 *Glycyrrhiza* Linn.

Glycyrrhiza tomentella Hay.
T. Soma A5, (*Lectypus*) Heito, Ako,
台湾



Glycyrrhiza aspera Pall.
Masny in Herb. 新疆哈密 Potanin



Glycyrrhiza echinata Linn.
A. C. Maingay 29, Chaney 135
辽宁营县



Glycyrrhiza foetida Desf.
T. L. Bullock 322 牛庄



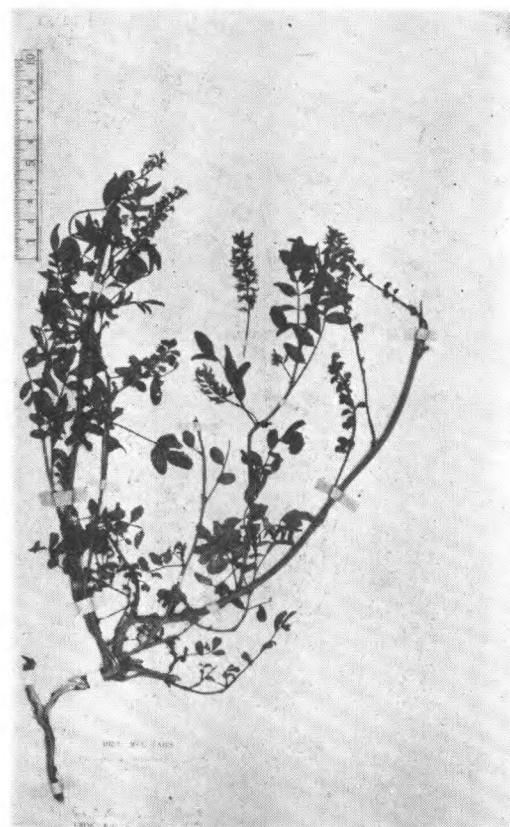
Glycyrrhiza glabra Linn.
H. Appleton 天山帕米尔



Glycyrrhiza pallidiflora Maxim.
Maxim. (isotype) 黑龙江

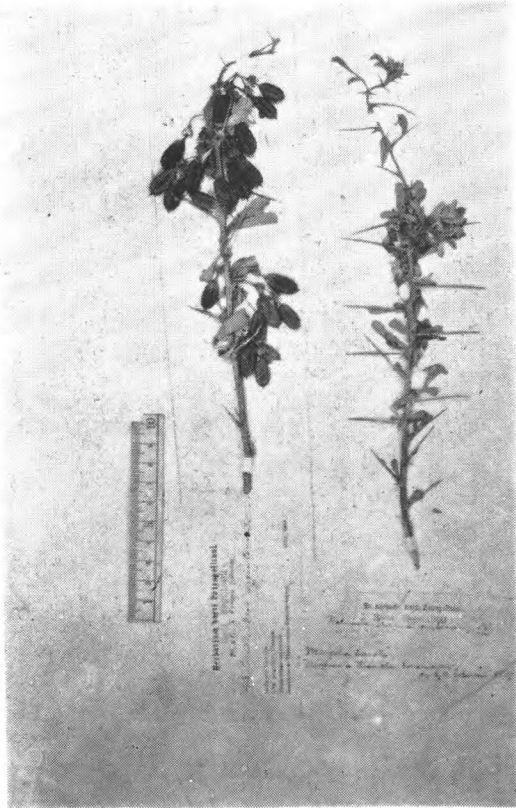


Glycyrrhiza squamulosa Franch.
Potanin



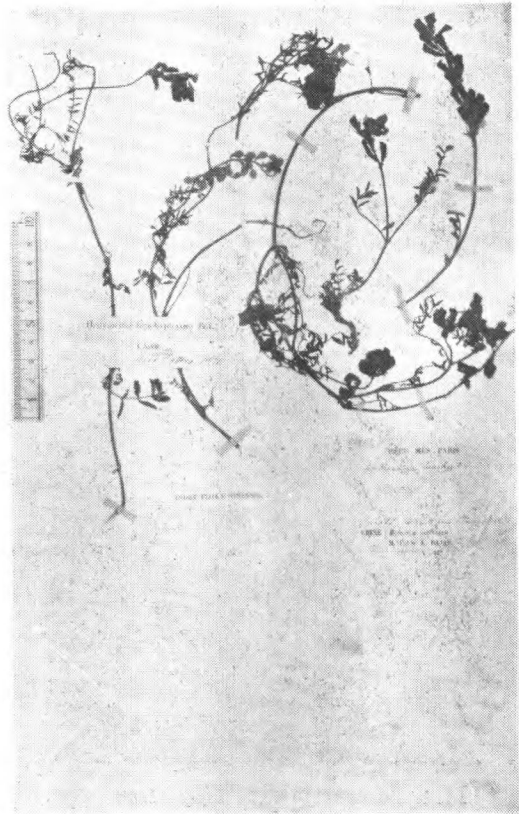
Glycyrrhiza uralensis Fisch.
David 2908, (isotype) 热河

盐豆木屬 *Halimodendron* Fisch.

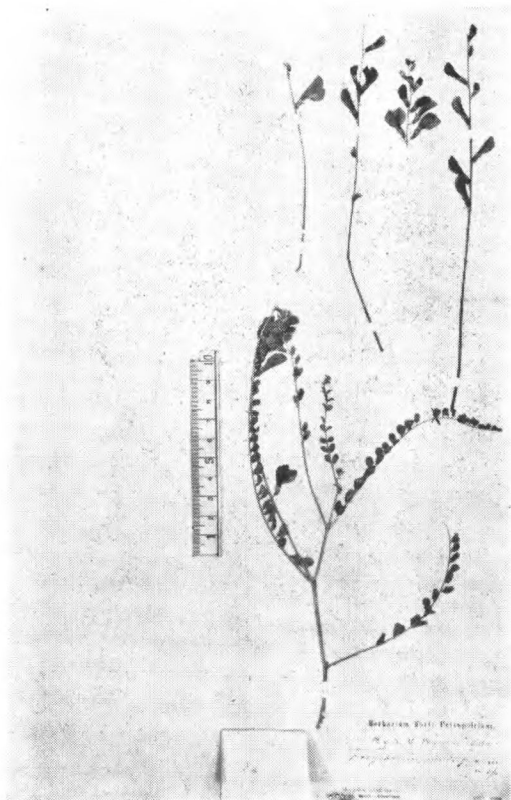


Halimodendron Halodendron (Pall.)
Voss.
Potanin 天山

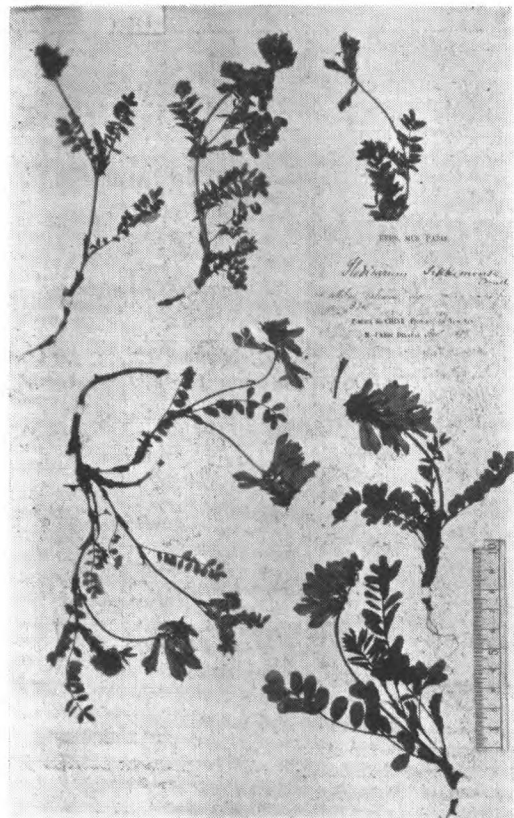
岩黄耆屬 *Hedysarum* (Tourn.) Linn.



Hedysarum brachypterum Bge.
David 2793. 热河 Bge. (isotype) 中国北部



Hedysarum multijugum Maxim.
Przewalski (1879) (isotype)
蒙西南戈壁



Hedysarum sikkimense Bth.
Delavay. Yen-tze-hay Pratt 32
西康打箭炉

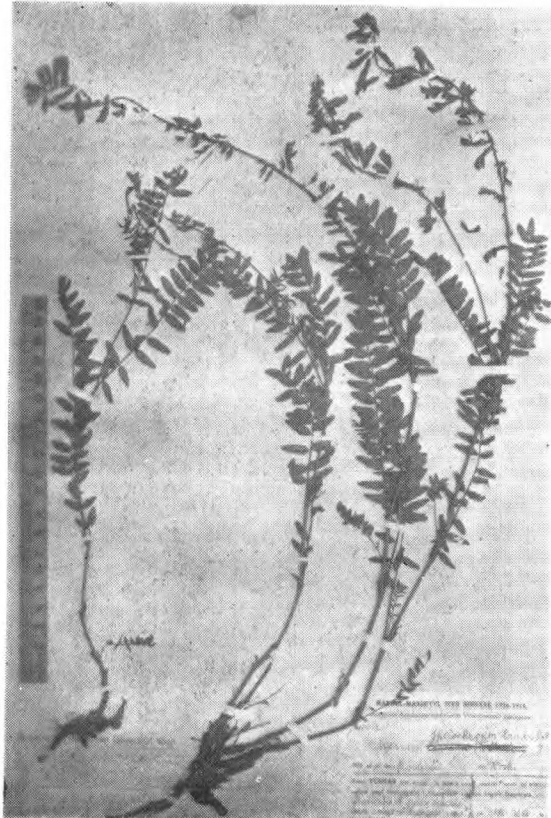


Hedysarum sikkimense Bth. var.
rigidum H.-M.
H.-M. 4041. (type) 云南丽江玉龙山



Hedysarum tanguticum B. Fedts.
Forrest 5823. 云南丽江东坡

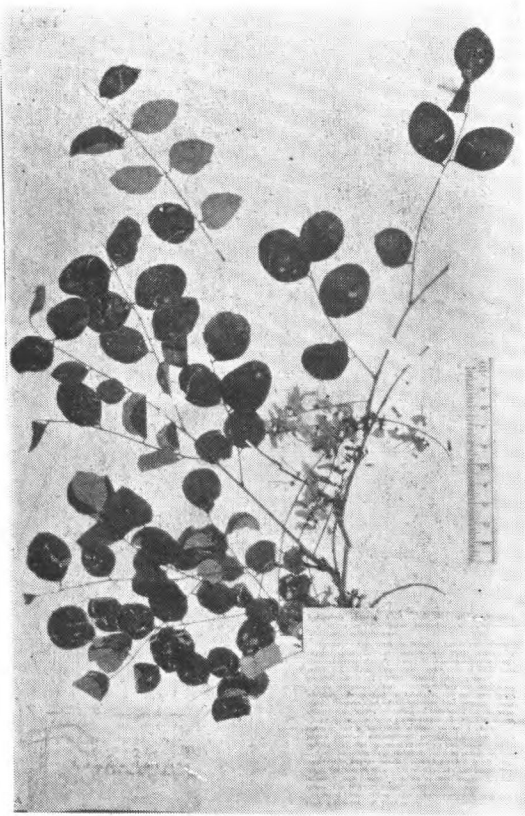
槐藍屬 *Indigofera* Linn.



Hedysarum thiochroum H.-M.
H.-M. 4652. (type) 云南中甸东南



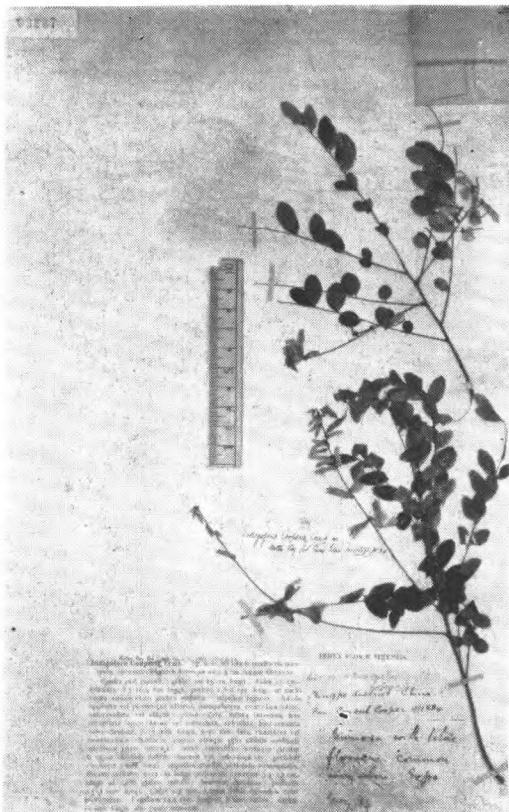
Indigofera argutidens Craib
Forrest. 2651 (Holotype) 云南丽江



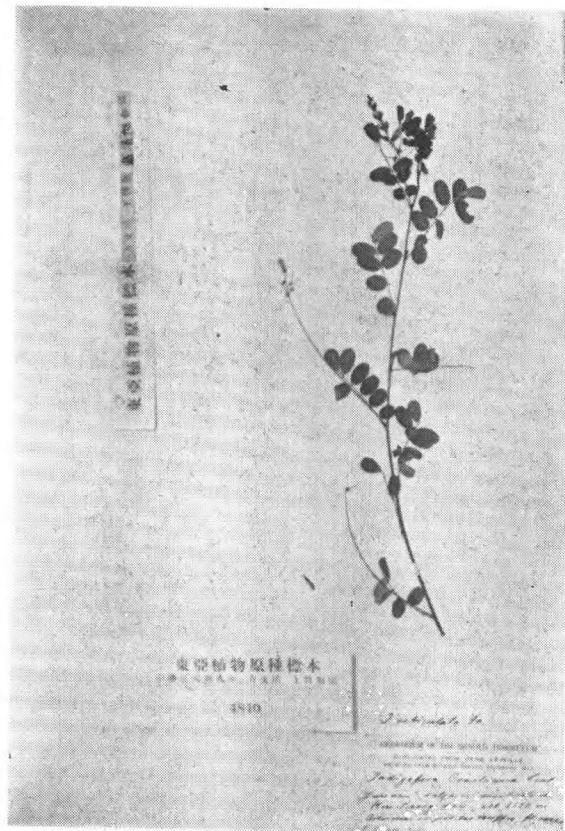
Indigofera chalara Craib
Wils. (Veitch) 1230 (type) 湖北兴山



Indigofera cinerascens Franch.
Delavay 519 (isotype) 云南太坪子



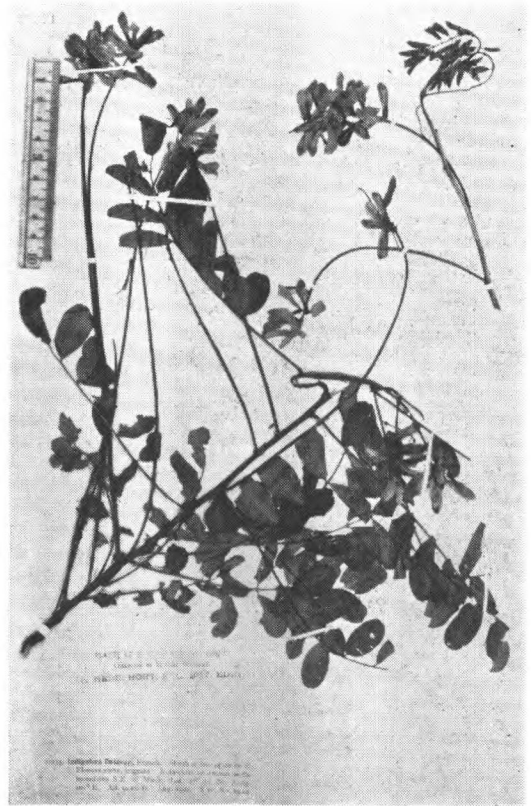
Indigofera Cooperi Craib
Cooper (type) 浙江宁波



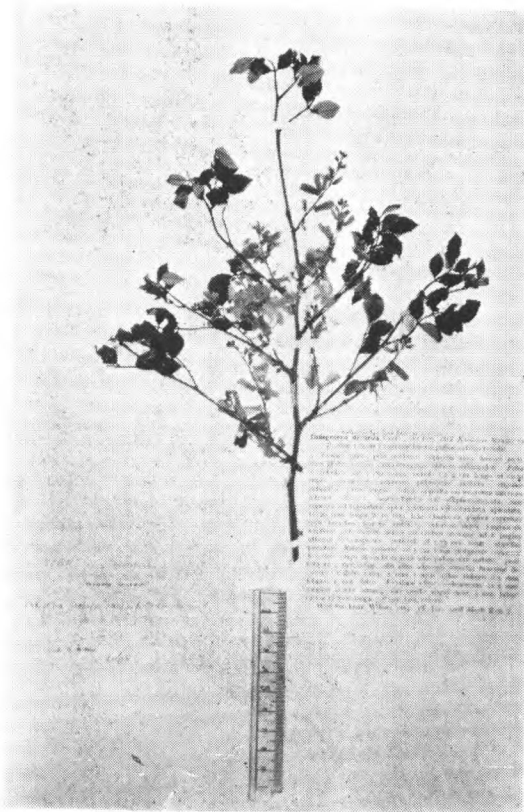
Indigofera Craibiana Lévl.
Maire (Cotype) 云南



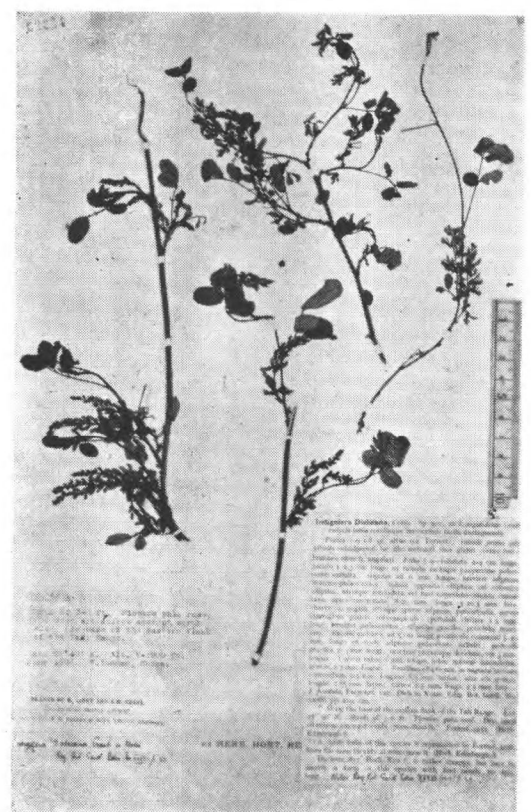
Indigofera decora Lindl.
Fortune 60. 福建廈門



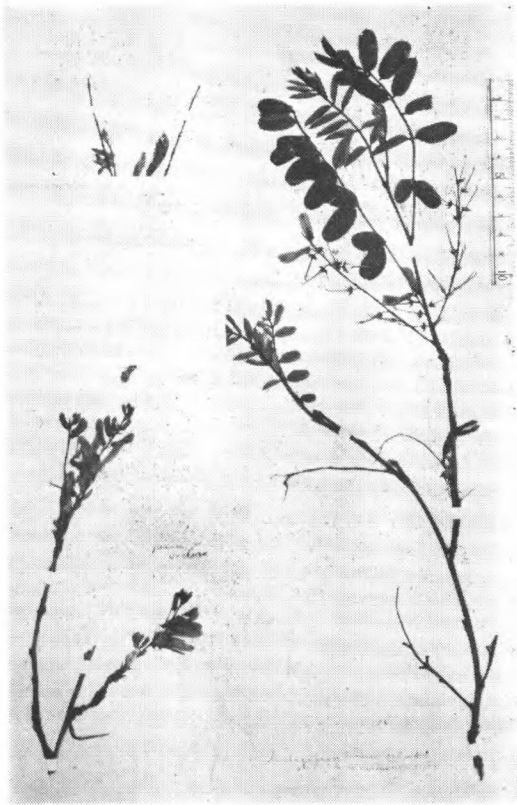
Indigofera Delavayi Franch.
Forrest 22155. 四川木里



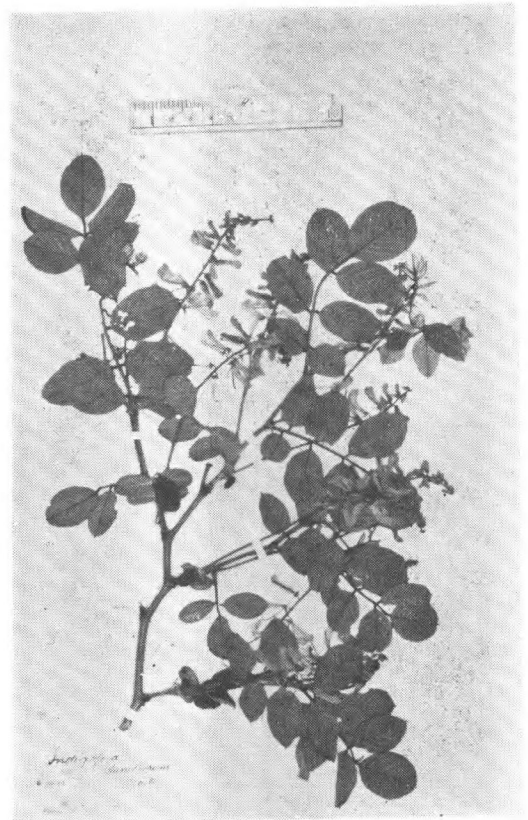
Indigofera dichroa Craib
Wils. 3084 (type) 四川瓦山



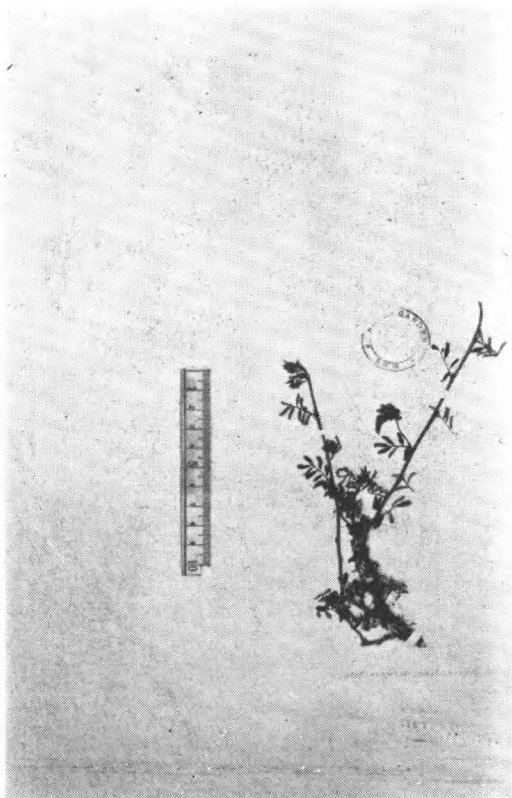
Indigofera Dielsiana Craib
Forrest. 4251 (isotype) 云南大理蒼山脚



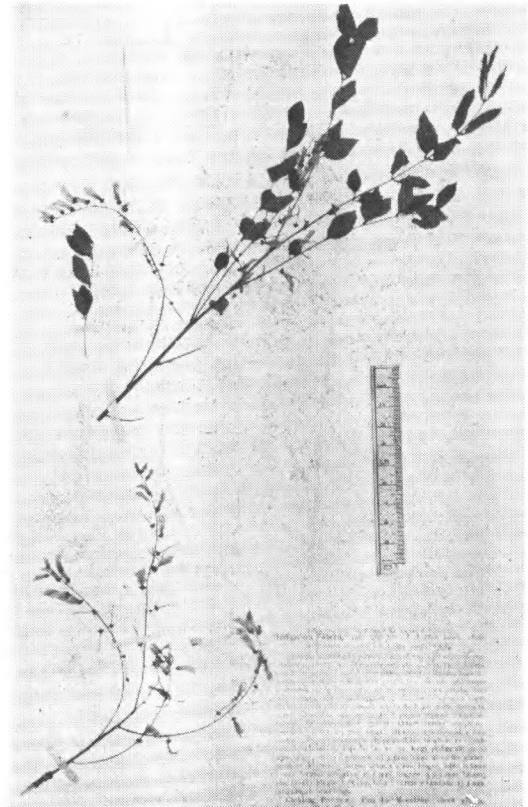
Indigofera Duclouxii Craib
Ducloux 706 (type) 云南昆明



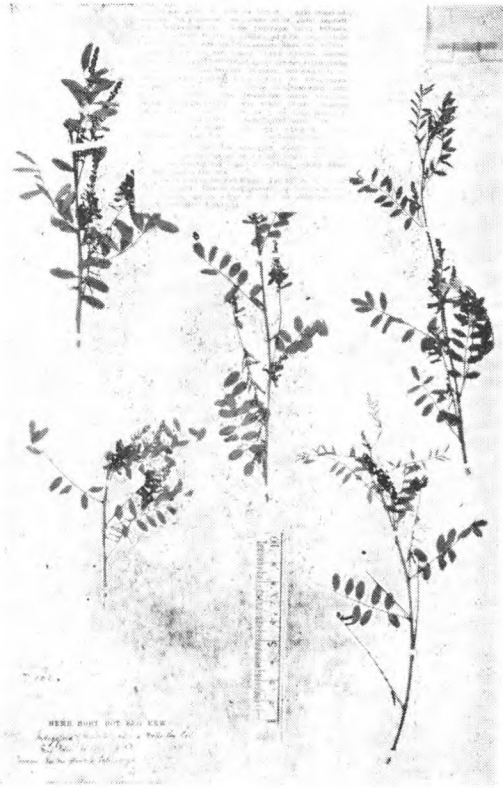
Indigofera dumetorum Craib
Forrest 12499 (type?) 云南



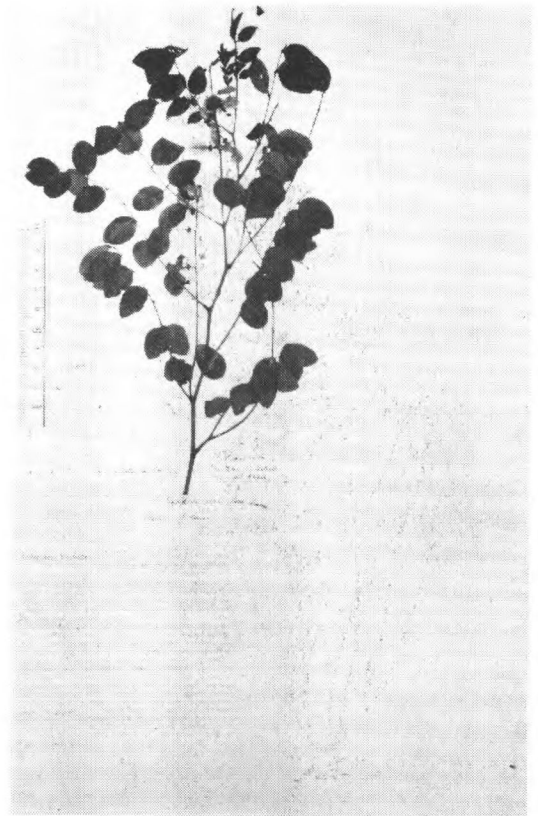
Indigofera endecaphylla Jacq.
Forrest 5587. 云南



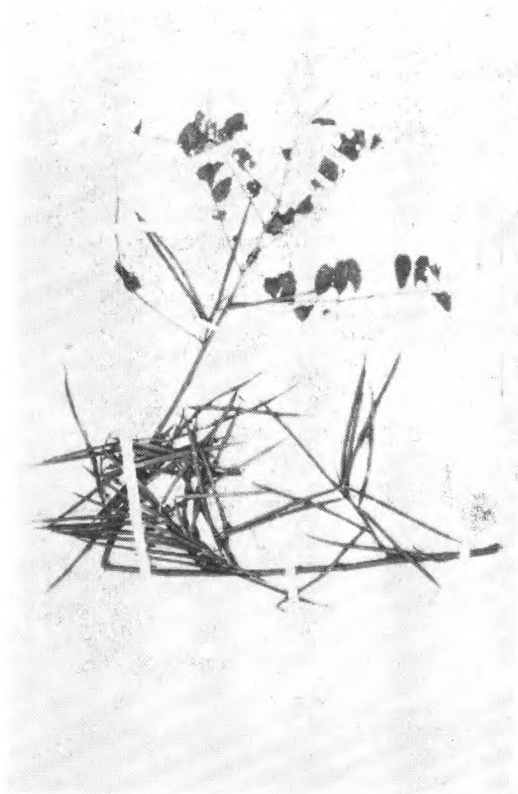
Indigofera Faberii Craib
Faber 243 (type) 浙江天台



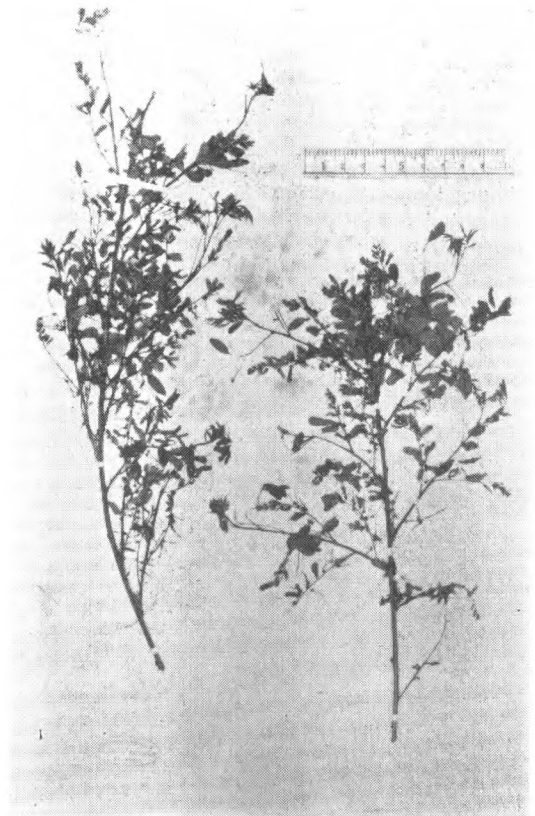
Indigofera Forrestii Craib
Forrest 7000 (type) 云南大理东坡



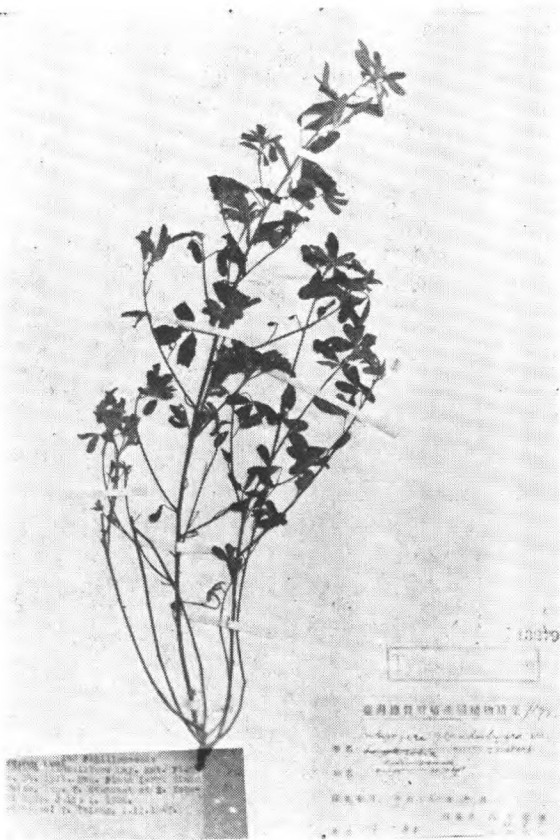
Indigofera Fortunei Craib
Fortune 43. (type) Silver Island



Indigofera galegoides DC.
McClure C.C.C. 8285. 海南



Indigofera Gerardiana R. Graham
Monbeig 云南



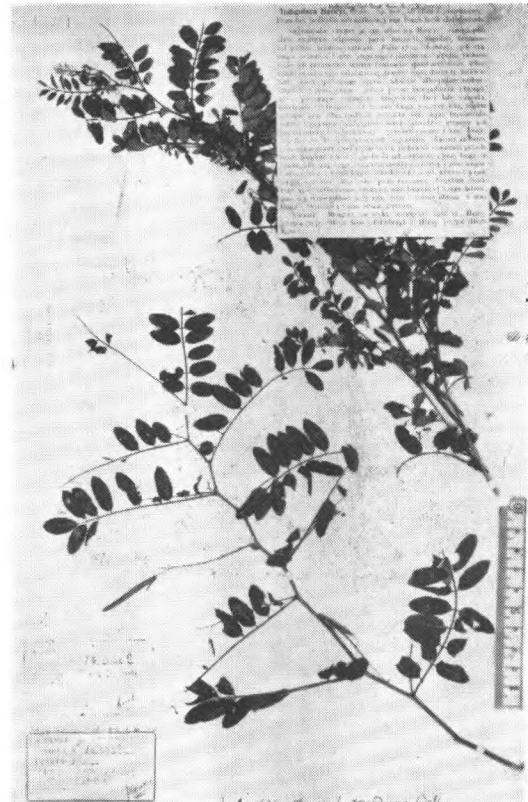
Indigofera glandulifera Hay.
T. Kawakami et Z. Kobayashi 1598.
(iso-syntypus.) Pinan, Taito,
台湾



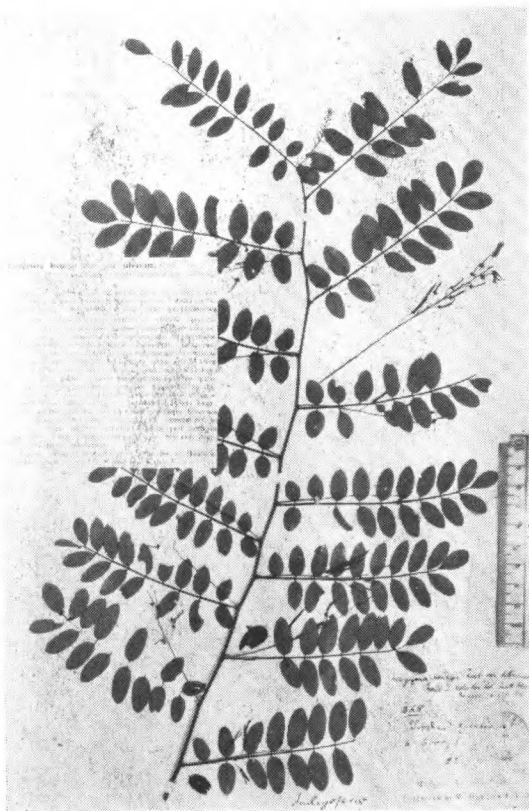
Indigofera Hancockii Craib
Hancock 332 (type) 云南蒙自



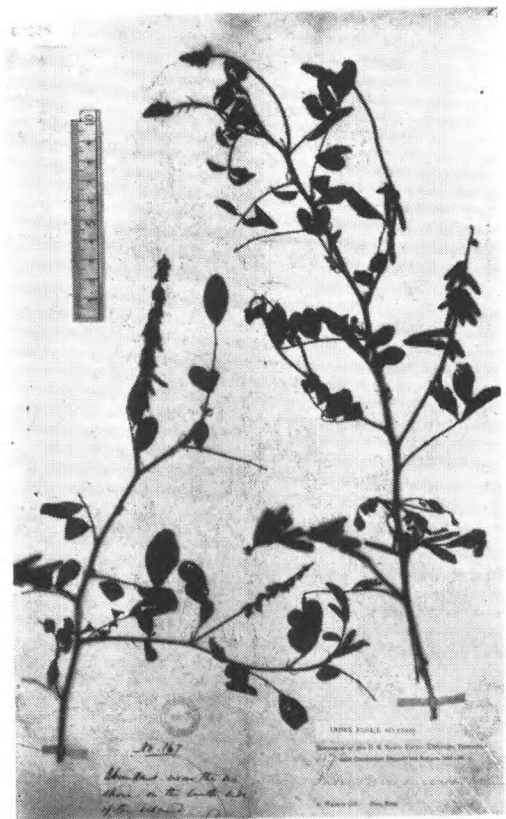
Indigofera hendecaphylla Jacq.
Henry 12495. 云南思茅



Indigofera Henryi Craib
Henry 10050 A, 10050B (type)
云南蒙自



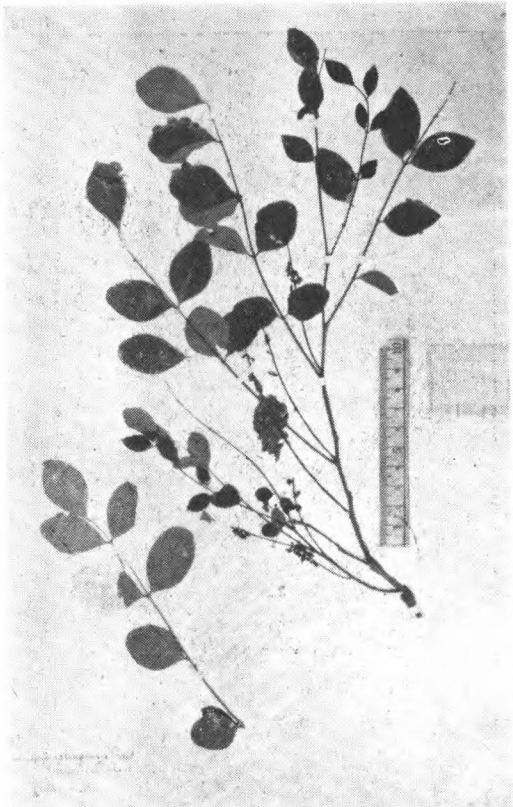
Indigofera Henryi Craib var. *silvarum*
Craib. Hancock 368. (type) 云南蒙自



Indigofera hirsuta Linn.
Wright 117, Wilford 167 香港



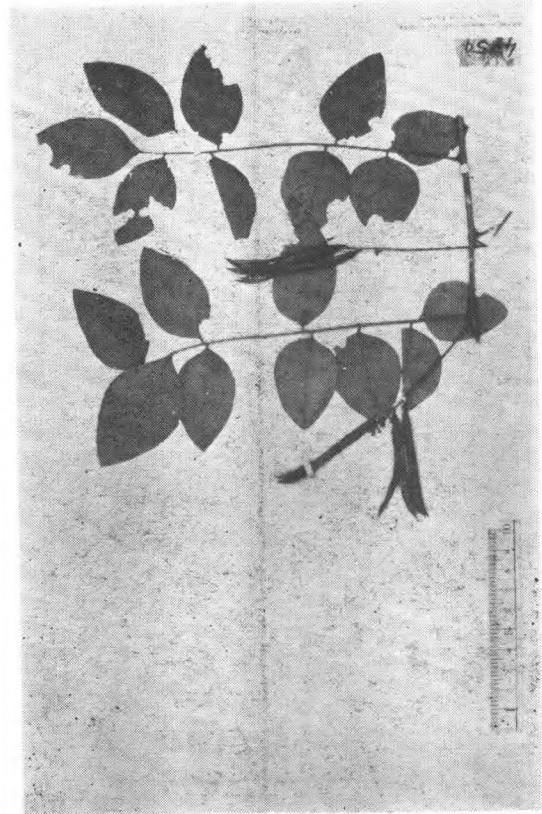
Indigofera Hosiei Craib
Hosie (1910) (type) 陕西甘肃



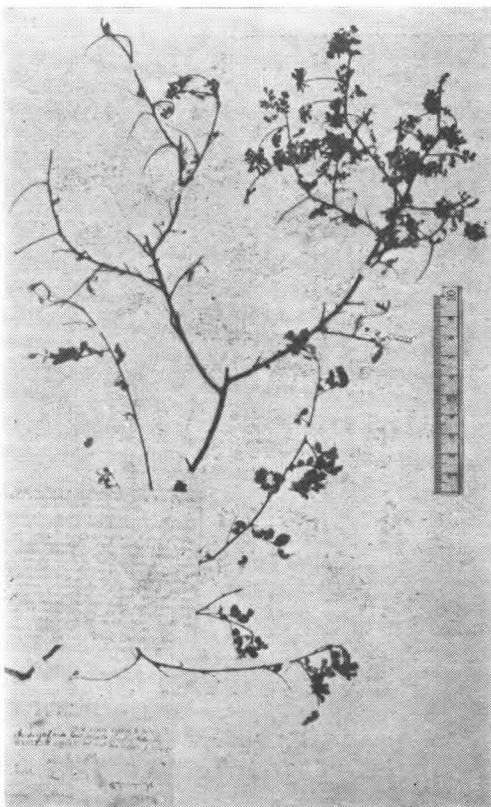
Indigofera ichangensis f. *calvescens*
Craib
Wilson 3082. (type) 湖北兴山



Indigofera ichangensis Craib *forma*
leptantha Craib
Henry 3865 (type?) 湖北宜昌



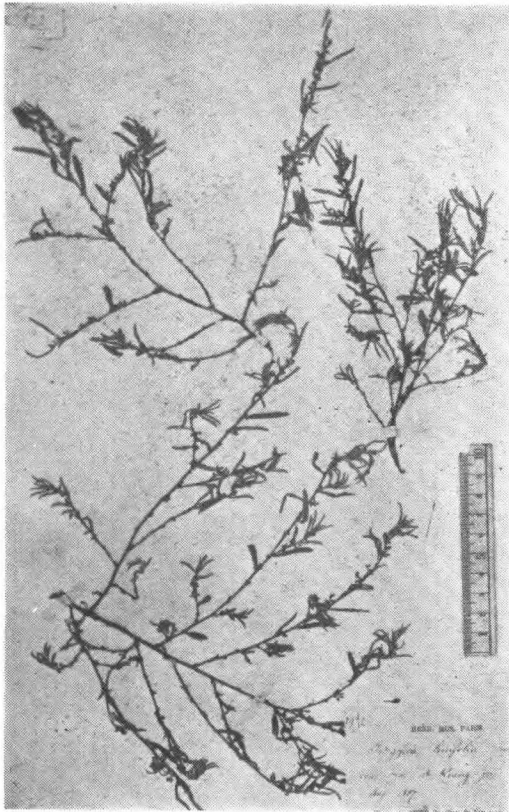
Indigofera ichangensis Craib *forma*
rigida Craib
Henry 4259 (type) 湖北宜昌



Indigofera Kirilowii Maxim. ex
Palibin forma coreana Craib
Caries 173 (type) 朝鮮济物浦



Indigofera lenticellata Craib
Wils. (Veitch) 3386 (type)
四川岷江谷



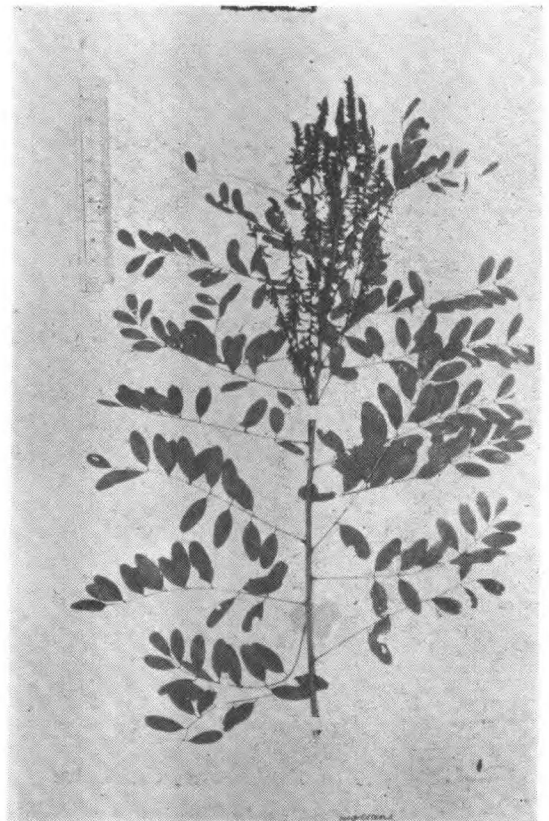
Indigofera linifolia (Linn. f.) Retz.
Delavay 1972 云南姜营 (Kianyn)



Indigofera mentzeana Craib
Henry 10627 (type) 云南蒙自



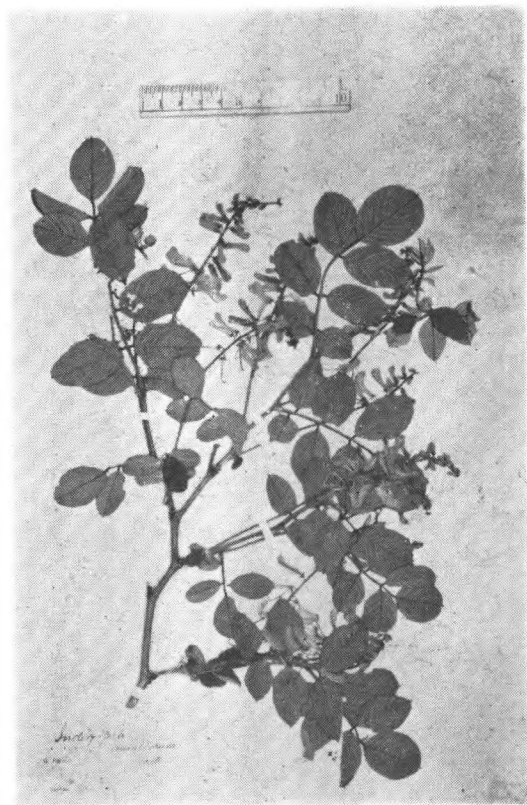
Indigofera myosurus Craib
Wils. (Veitch) Exp. 3382. (type) 四川



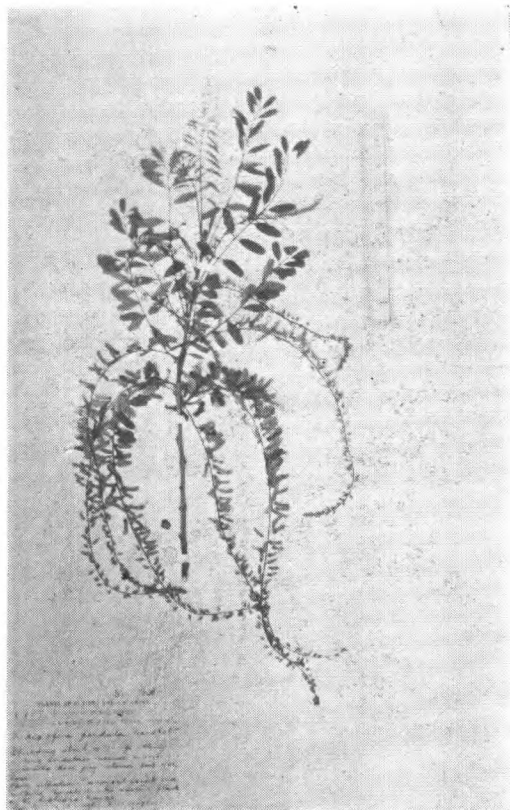
Indigofera nigrescens Kurz
Henry 11212. 云南蒙自



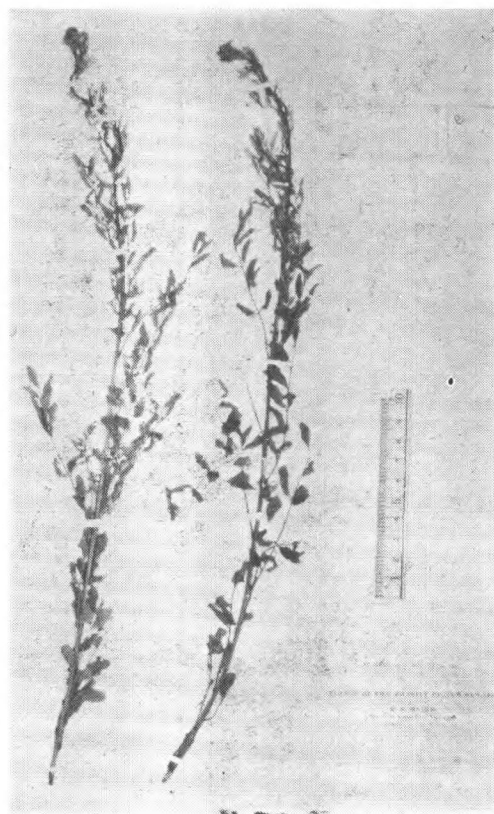
Indigofera Pampaniniana Craib
Maire 2427 (type) 云南



Indigofera Parkesii Craib
Parkes (type) 广东?



Indigofera pendula Franch.
Forrest 2197 云南丽江



Indigofera proterantha (Pamp.) Gagnep.
Maire 1850. 云南



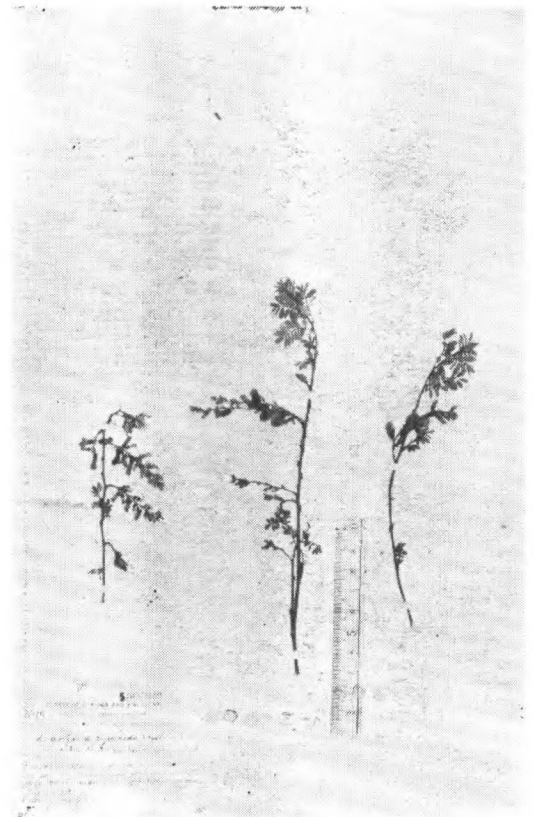
Indigofera pseudotinctoria *Matsm.*
Faber 751, 岷江 Ford. 6. 广东



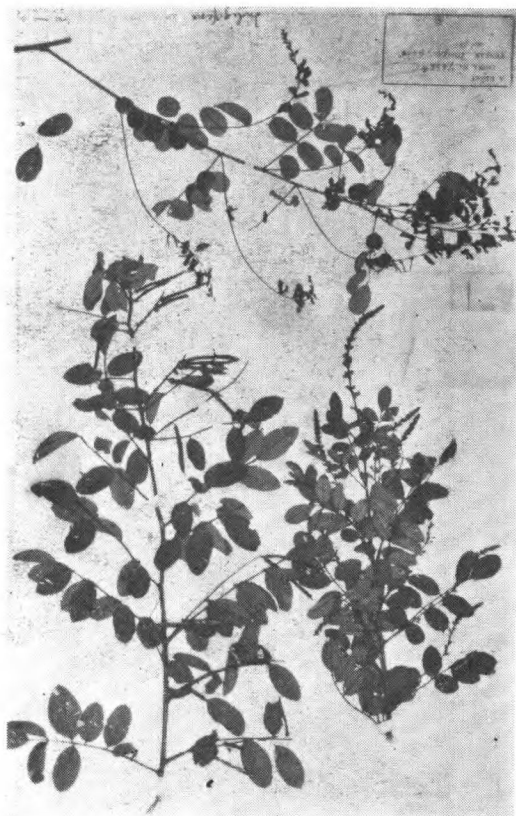
Indigofera pulchella *Roxb.*
Henry 10980 云南红河独板



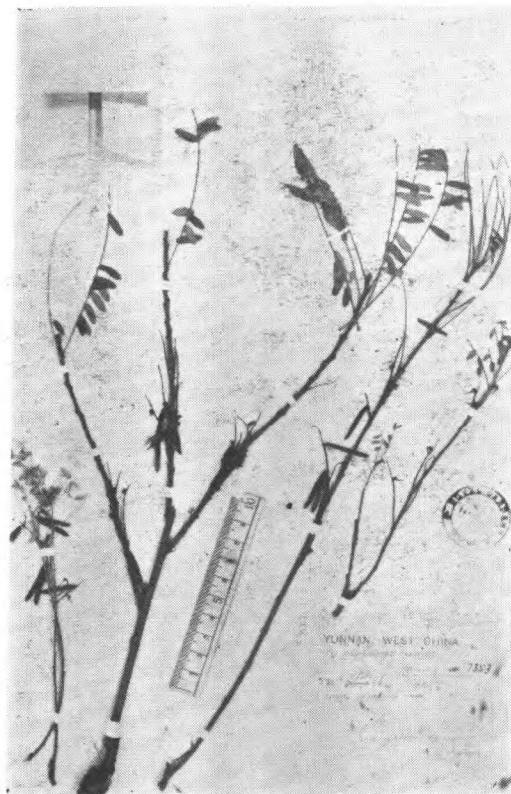
Indigofera reticulata *Franch.*
Delavay 1964 (isotype)
云南大坪子黄黎坪



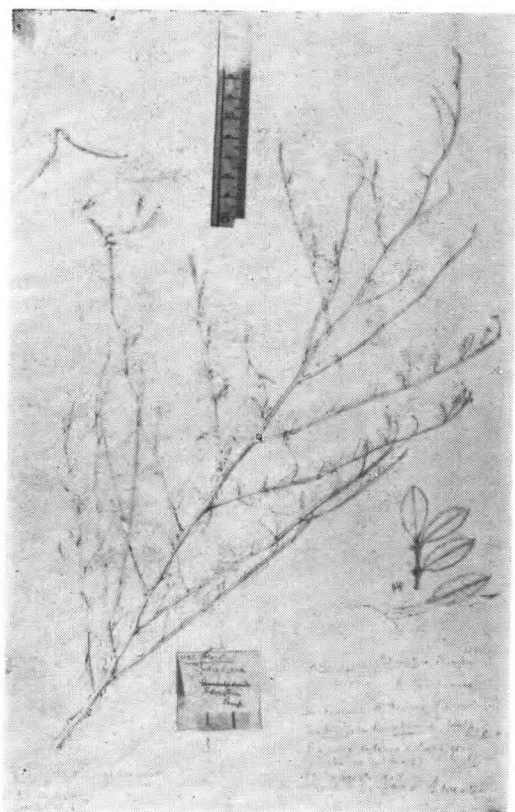
Indigofera rigioclada *Craib*
Forrest 2099 type 云南丽江东坡



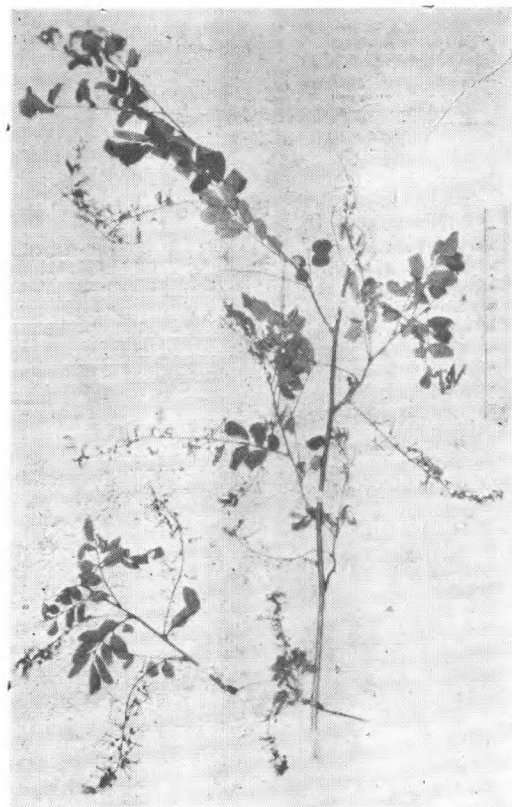
Indigofera scabrida Dunn
Henry 9686A (type) 云南蒙自



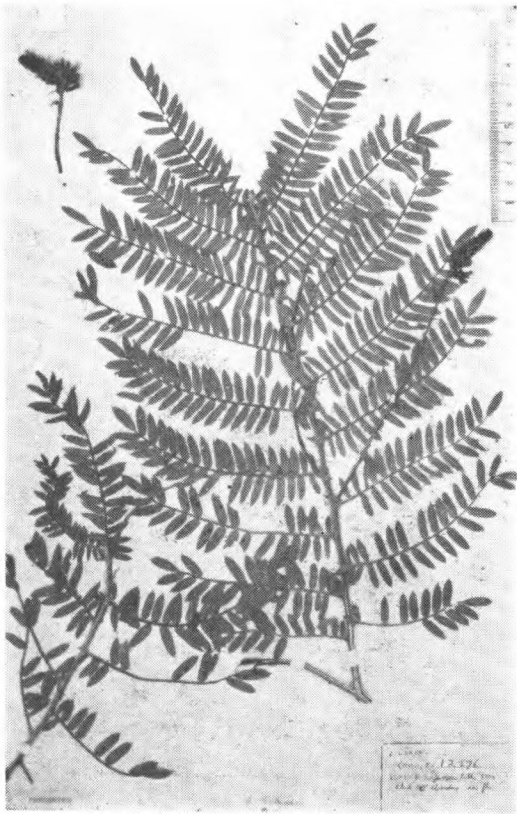
Indigofera sensitiva Franch.
Forrest 7353. 云南鹤庆



Indigofera Silvestrii Pamp.
Silvestri 1091 (type) 湖北襄阳



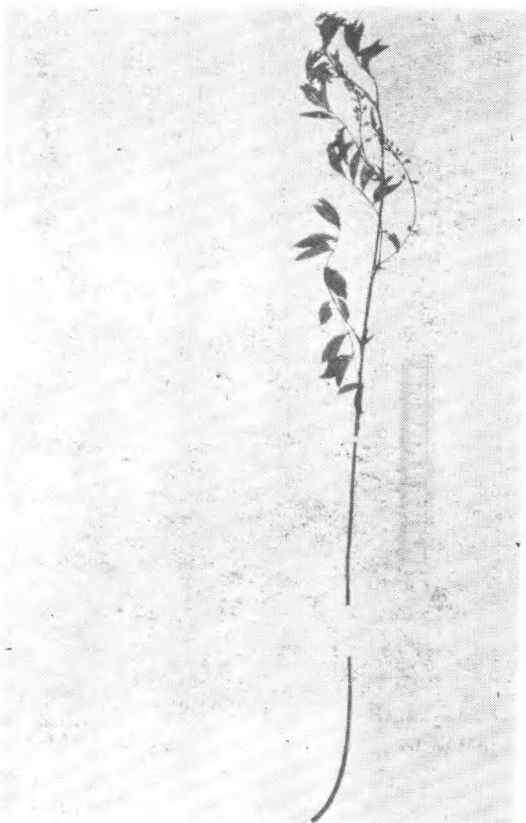
Indigofera Souliei Craib
Soulie 870 (type) 西康打箭炉



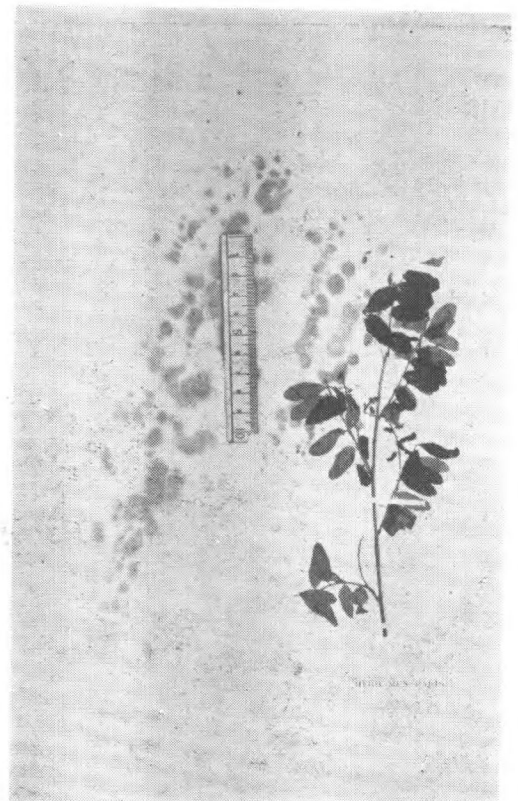
Indigofera stachyoides Lindl.
Henry 12276 云南思茅



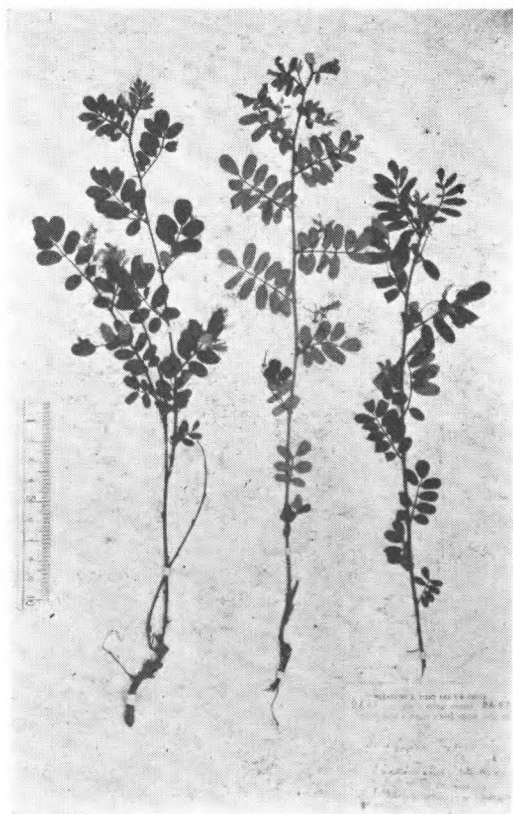
Indigofera stricta Craib
Henry 13720 (type) 云南蒙自



Indigofera subnuda Craib
Carles (type) 上海



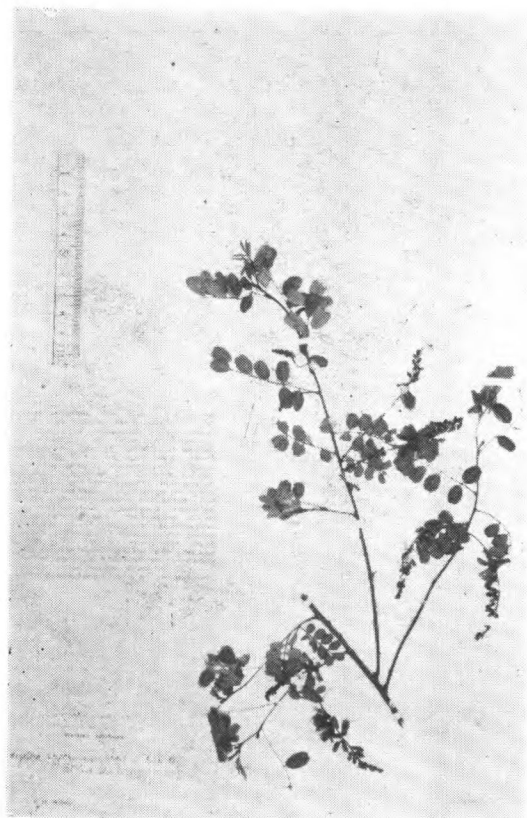
Indigofera subsecunda Gagnep.
Maire (isotype) 云南 Pi-ka-kang



Indigofera subverticillata Gagnep.
Monbeig 58 (isotype?) 西藏



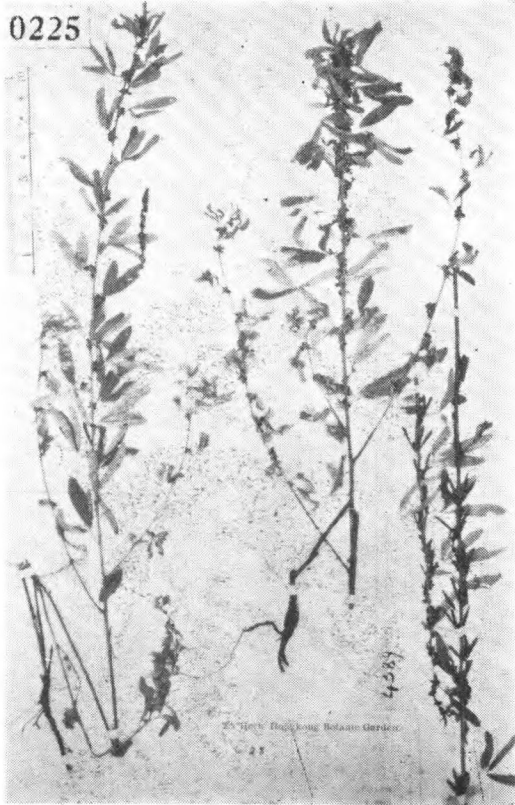
Indigofera suffruticosa Mill.
Ching 7483 广西



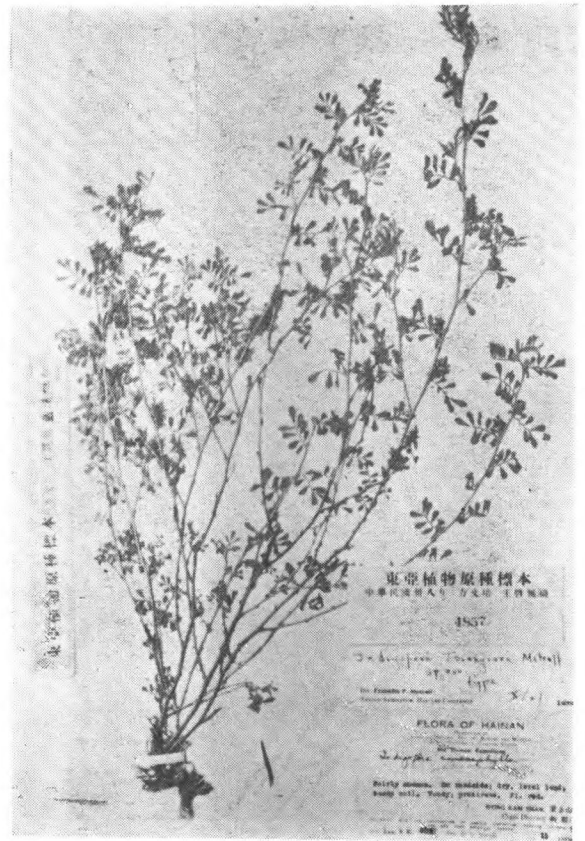
Indigofera sechuenensis Craib
Wils. 3075A (type) 四川岷江谷茂县



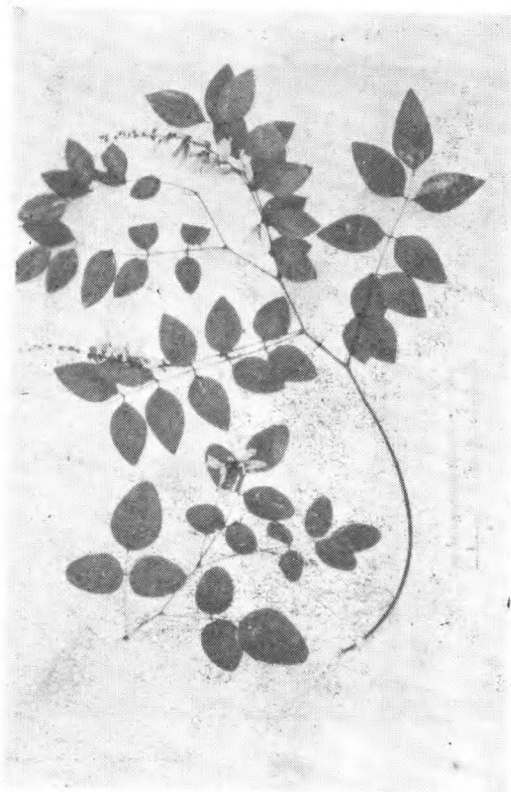
Indigofera tengyuehensis Tsai et Yu
Rock 8042 (isosytype) 云南



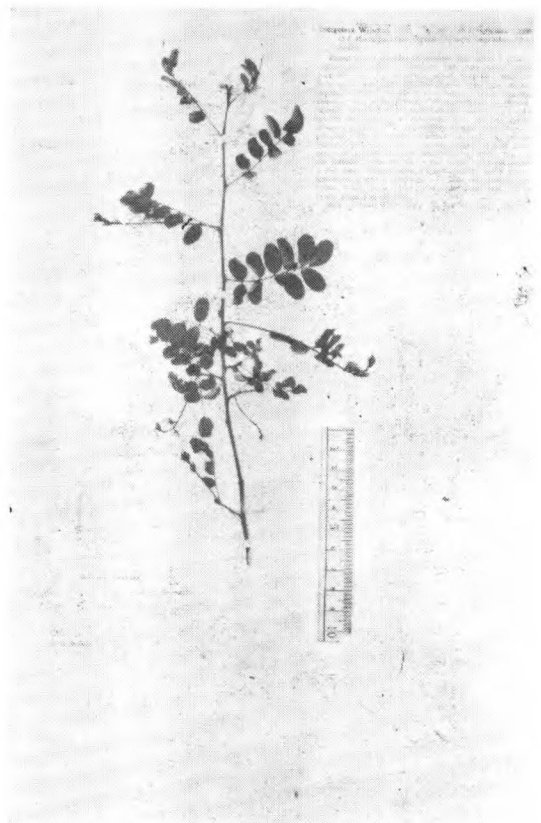
Indigofera trifoliata Linn.
Ford 28. 广东, Henry 4389 湖北宜昌



Indigofera trifoliata Linn.
Lau 602, (type) 海南

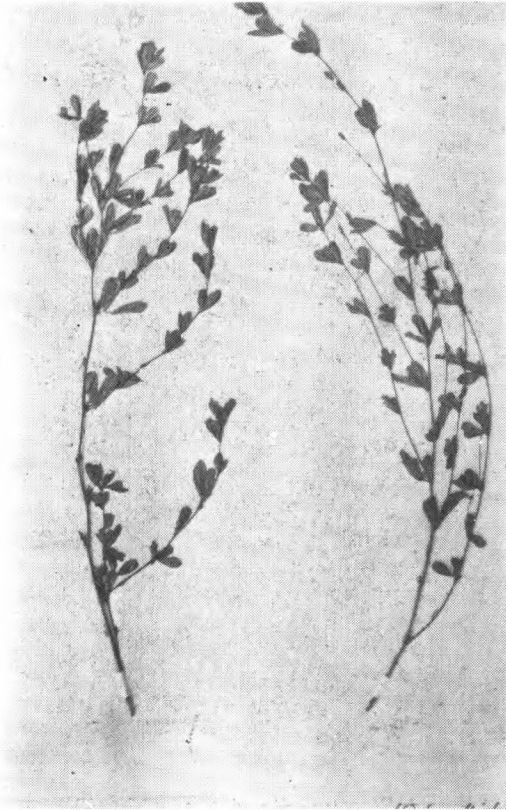


Indigofera venulosa Champ.
Champ. (type) 香港



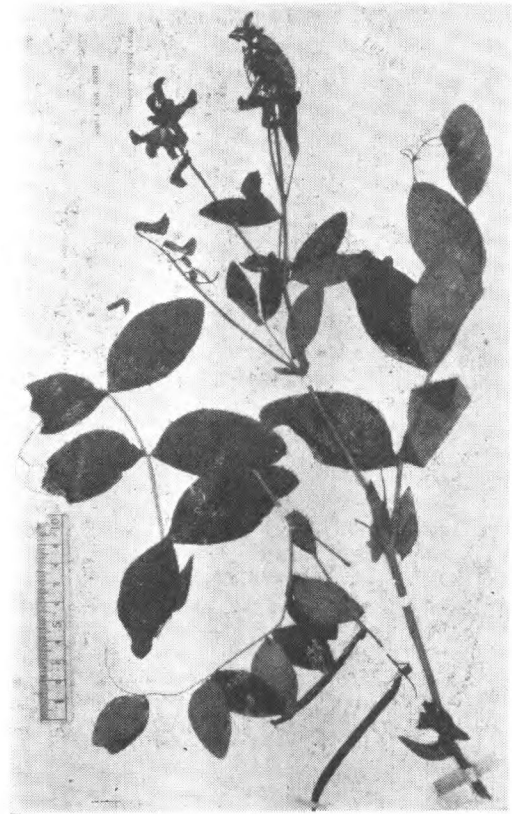
Indigofera Wilsonii Craib
Wils. 3074 (type) 四川岷江谷

雞眼草屬 *Kummerowia* Schindl.



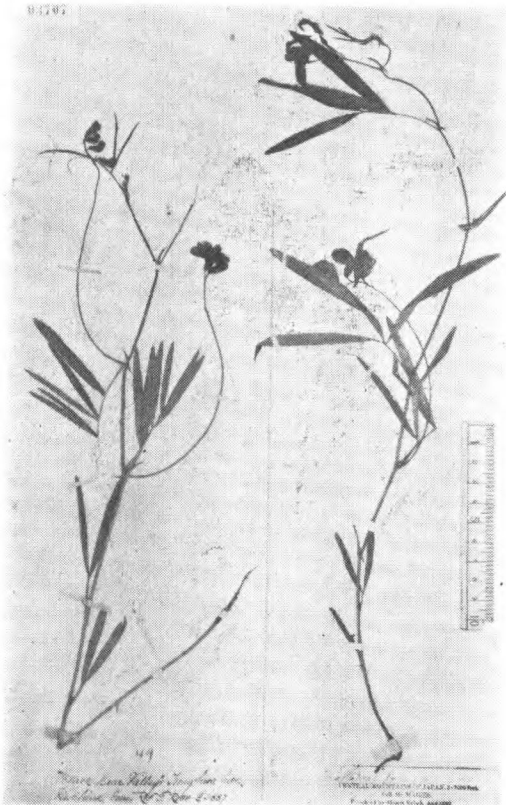
Kummerowia striata (Thbg.) Schindl.
Thbg. (holotype)

山黧豆屬 *Lathyrus* Linn.

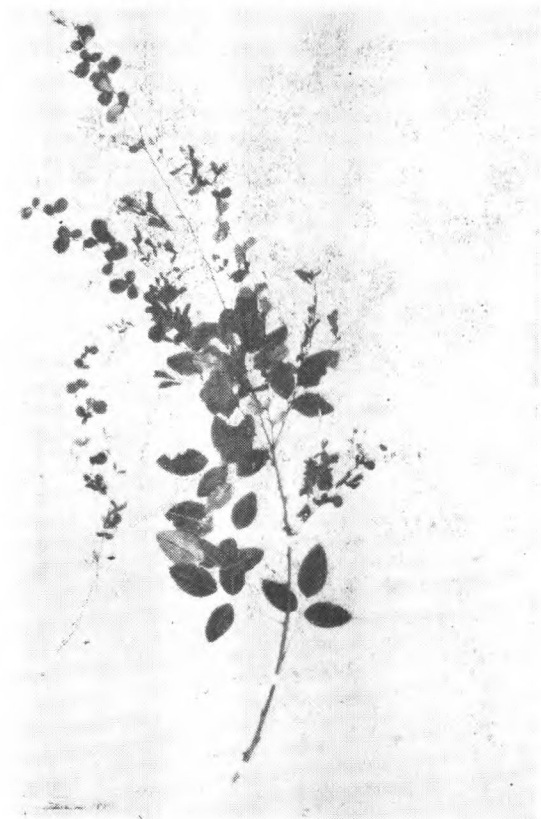


Lathyrus Davidii Hance
David 2215 (isotype) 北京四圍諸山

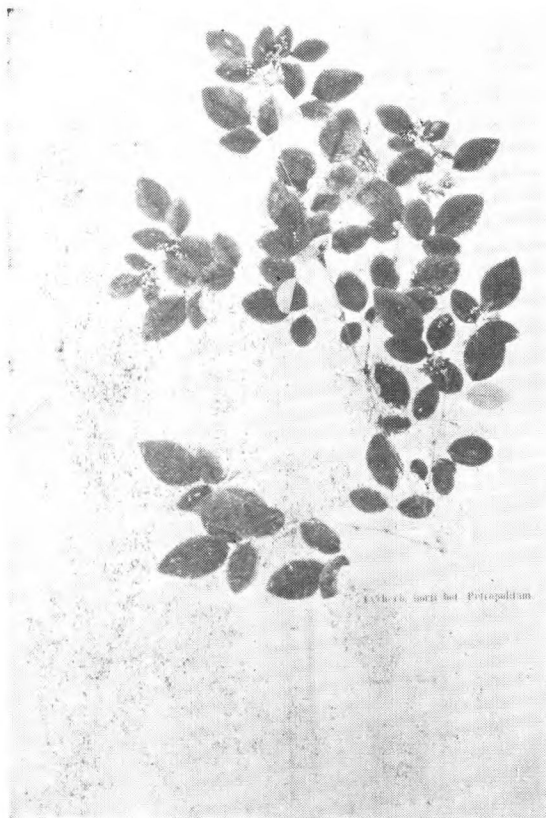
胡枝子屬 *Lespedeza* Michx.



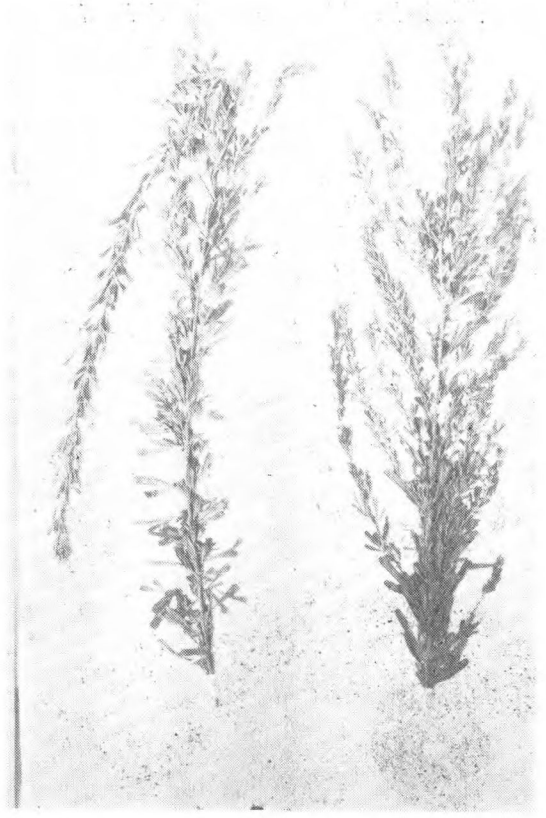
Lathyrus quinquenervius (Miq.) Litv.
T. Ross 49 吉林敦化黑熊谷



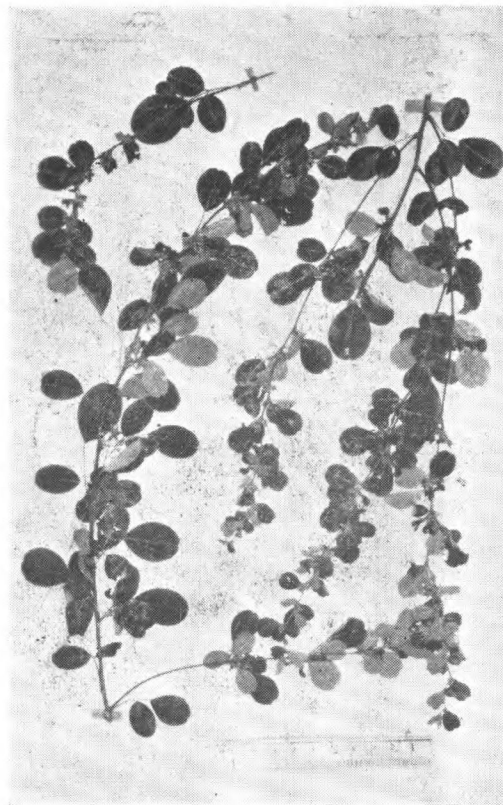
Lespedeza bicolor Turcz.
Tatarinow (1859). 华北



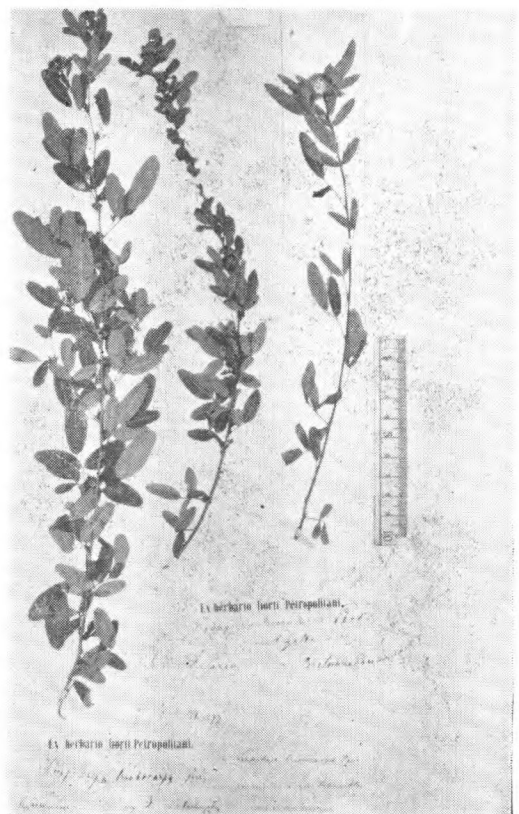
Lespedeza buergeri Miq.
Maxim. 日本横滨



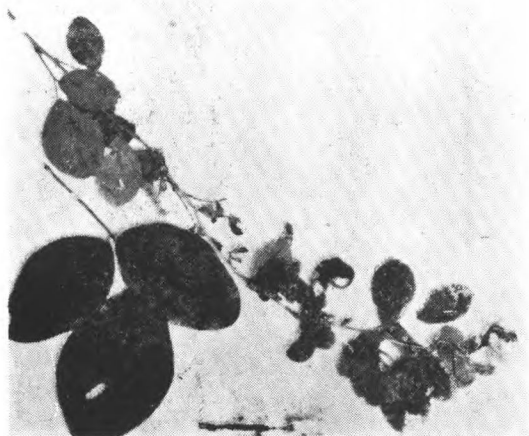
Lespedeza cuneata (Dum-Cours.)
G. Don



Lespedeza cyrtobotrya Miq.
Oldham 20, 336. 日本长崎



Lespedeza daurica (Maxim.) Schindl.
Bretschneider 196, 197. 北京



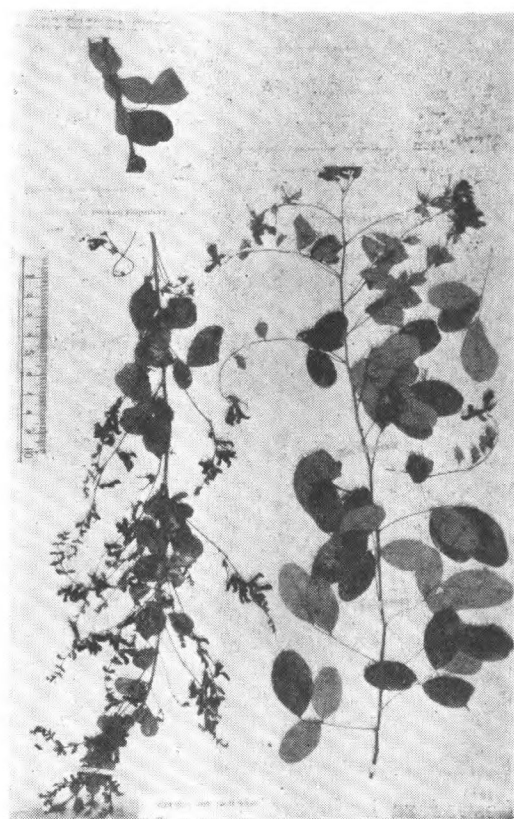
Lespedeza Davidii Franch.
David 925 (type) 江西九江



Lespedeza floribunda Bge.
Carles 47. Chin Kiang (江苏镇江)



Lespedeza Fordii Schindl.
Ford 27, 29 (type) 广东



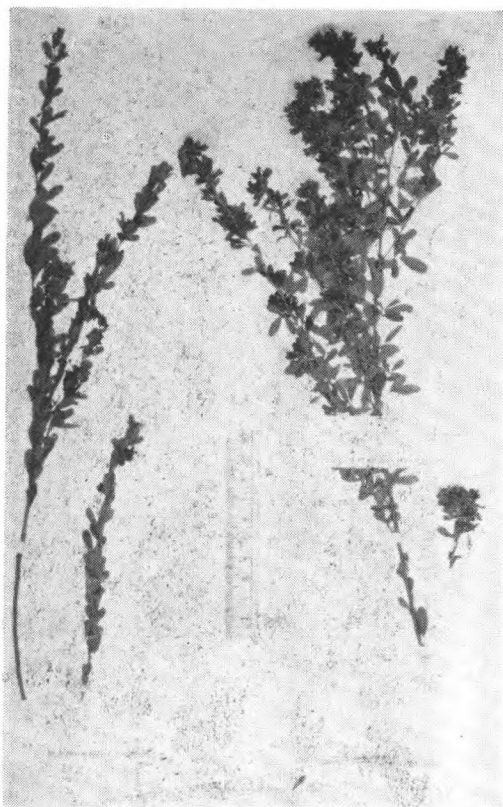
Lespedeza formosa (Vogel) Koehne
Vachell 201 (locotype) 澳門, Shearer 九江



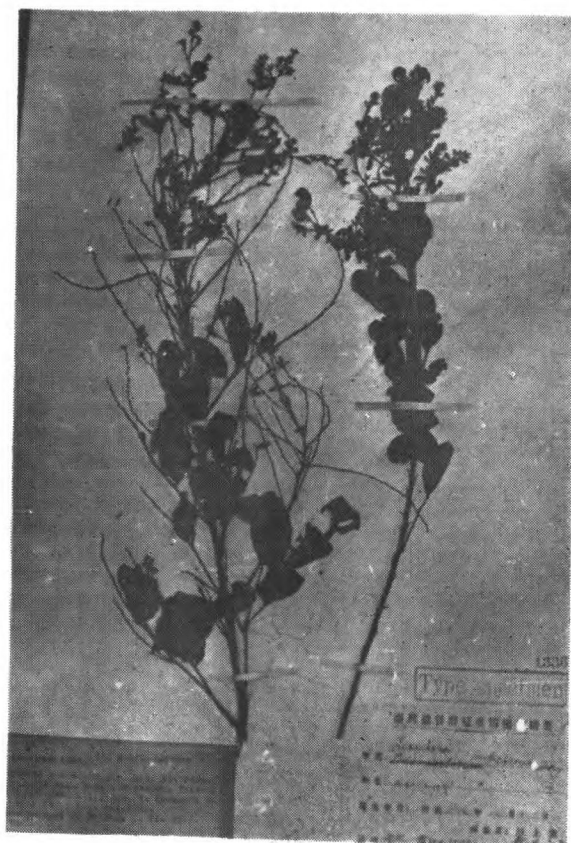
Lespedeza Forrestii Schindl.
Forrest 10427, 云南



Lespedeza hedysaroides (Pall.) Kitagawa
(syntype) 青島



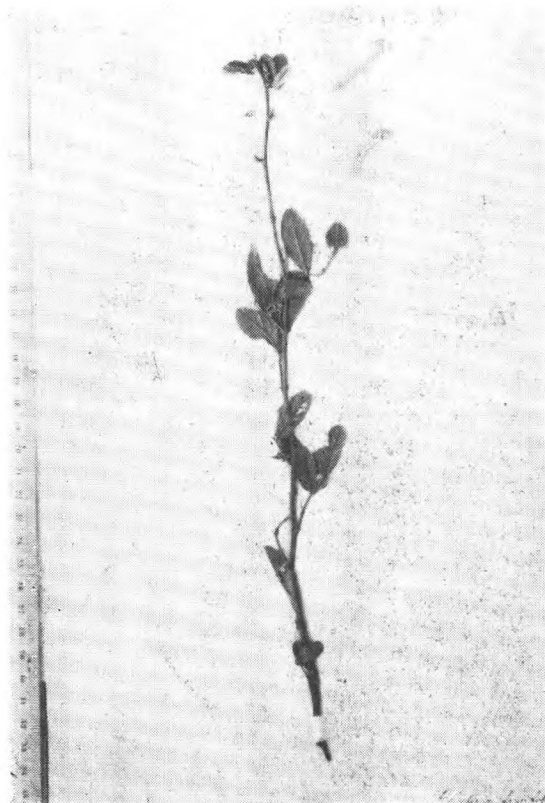
Lespedeza hedysaroides (Pall.) Kitagawa
var. *inschanica* (Maxim.) Kitagawa
Tatarinow 1859 (isotype) 北京附近阴山



Lespedeza pubescens Hay.
T. Kawakami et U. Mori 1136
(syntypus) 台湾

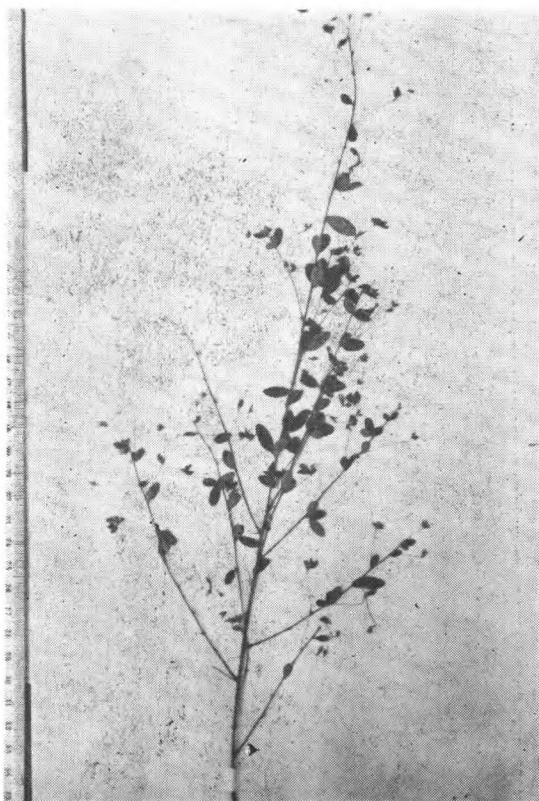


Lespedeza Thunbergii (DC.) Nakai
Thbg. (type)

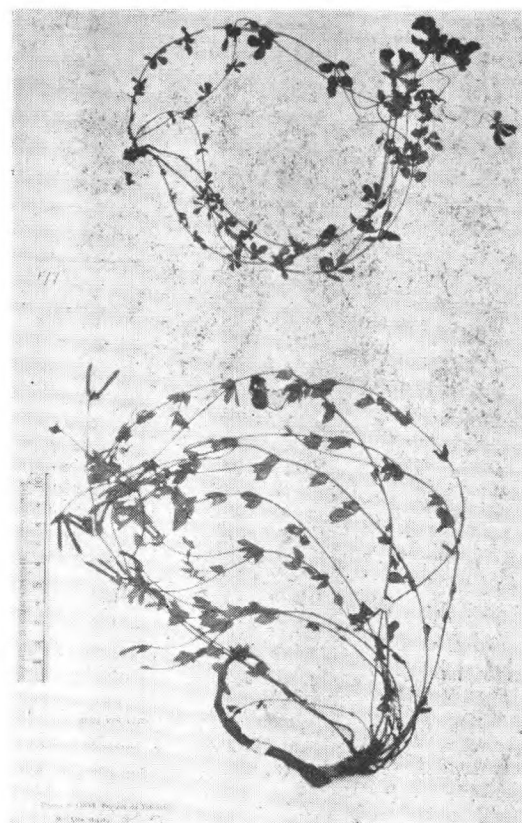


Lespedeza tomentosa (Thbg.) Sieb.
Thbg. (holotype)

牛角花屬 *Lotus* Linn.

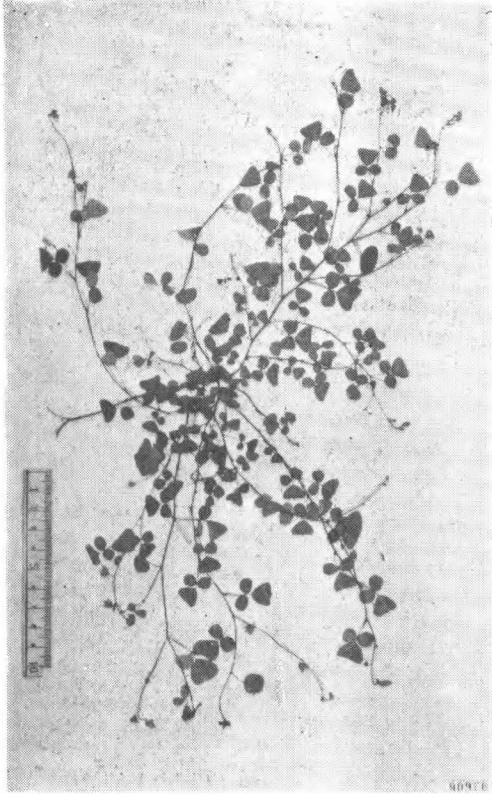


Lespedeza virgata (Thbg.) DC.
Thbg. (holotype.)



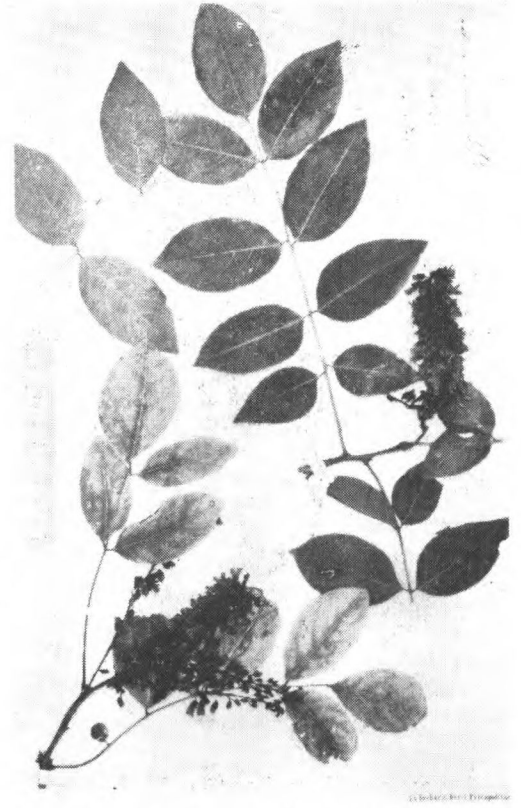
Lotus corniculatus Linn.
Delavay 518. 云南大坪子,
Pratt 177. 西康打箭炉

蝴蝶叶屬 *Lourea* Neck.

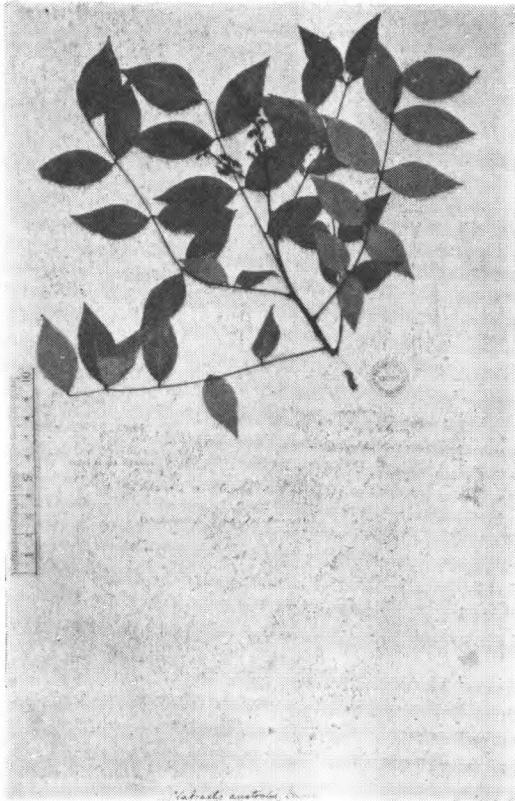


Lourea obcordata (Poir.) Desv.
Ex herb. Hk. 中国

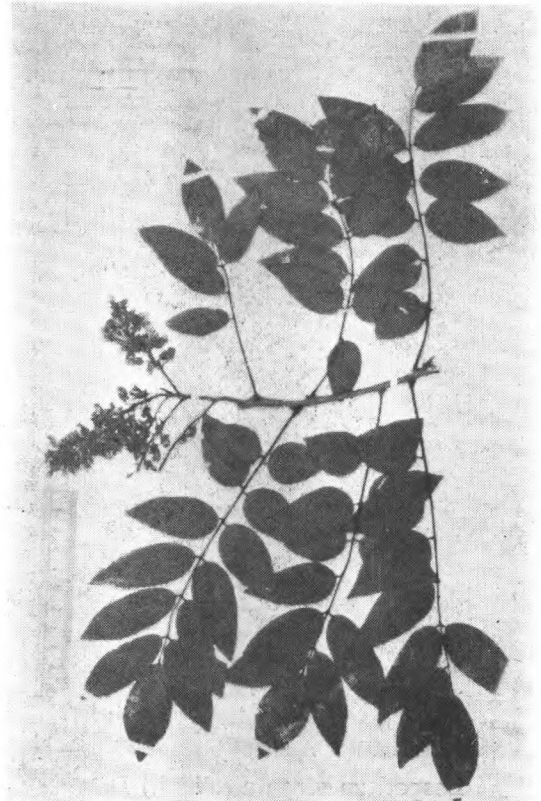
馬鞍樹屬 *Maackia* Rupr. et Maxim.



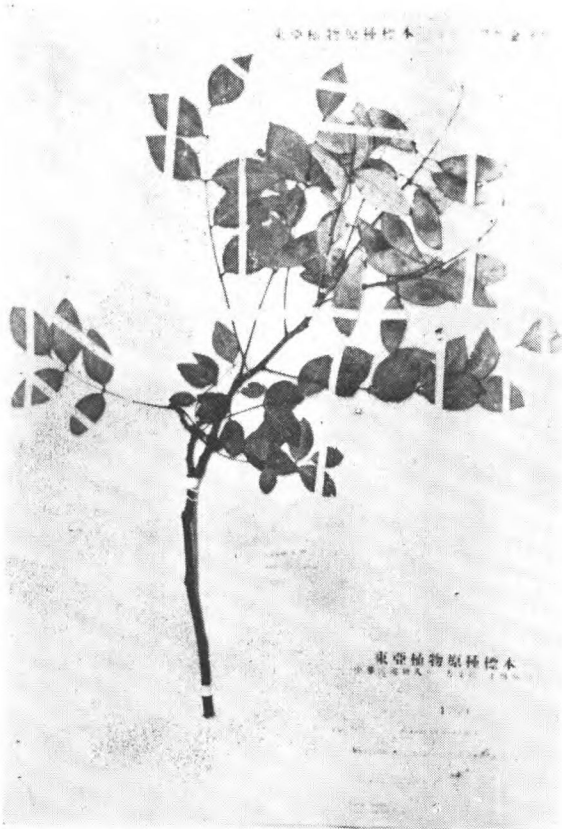
Maackia amurensis Rupr. et Maxim.
Maack (type) 黑龙江烏苏里



Maackia australis (Dunn) Takeda
Ex Herb. Benth. (type) 广东



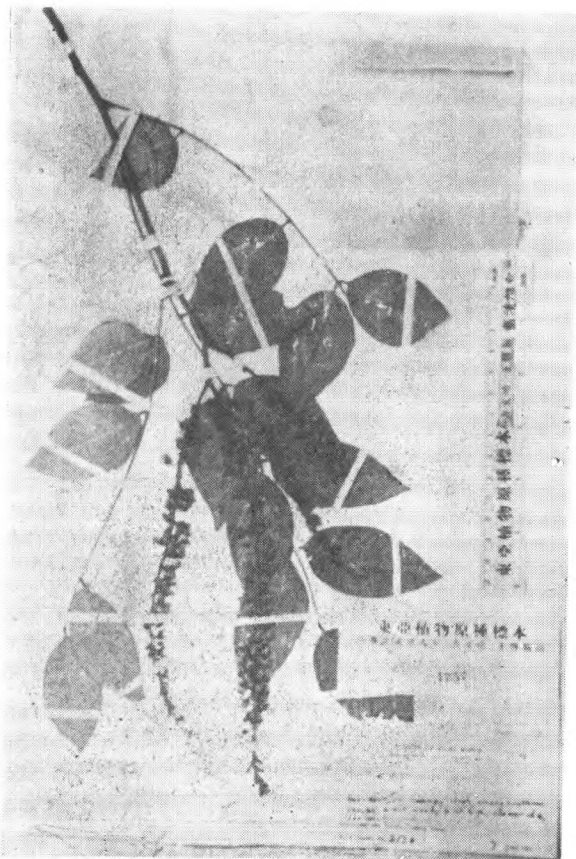
Maackia chinensis Takeda
Wils. 709, (isotype) 湖北兴山



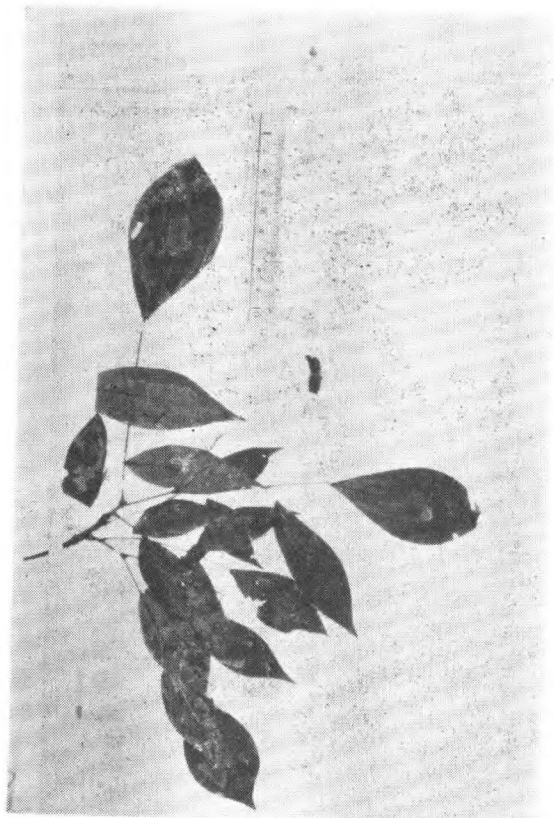
Maackia ellipticarpa Merr.
Taam 1693, (isotype) 香港



Maackia Fauriei (Lévl.) Takeda
Faurie 1692 (isotype)

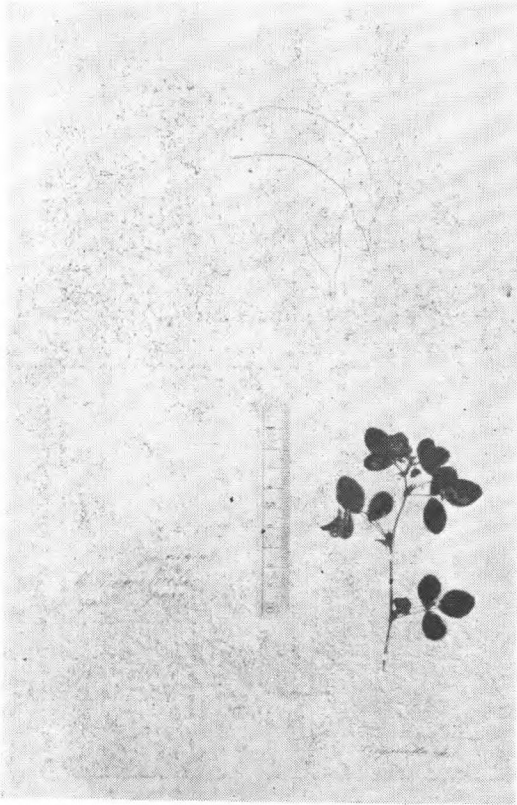


Maackia lantaoensis Merr.
Taam 2134 (isotype) 香港

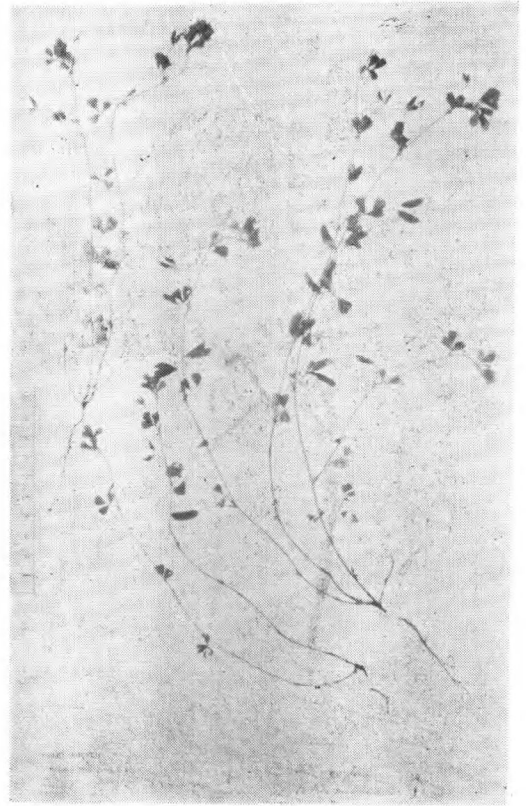


Maackia tenuifolia (Hemsl.) H.-M.
Cooper (type) 浙江宁波

苜蓿屬 *Medicago* L.



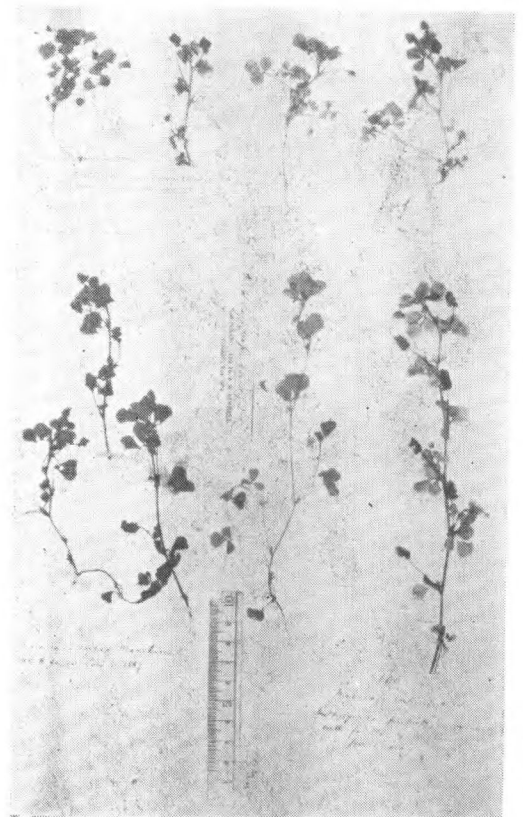
Medicago archiducis-Nicholai G. Sirj.
Learner (type) 甘肃及西藏东北



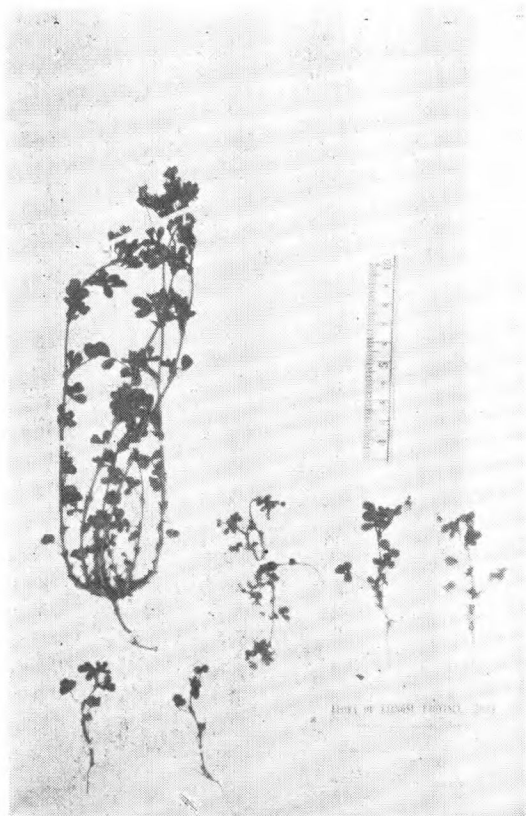
Medicago Edgeworthii Sirj.
Soulié 358. 西藏东部



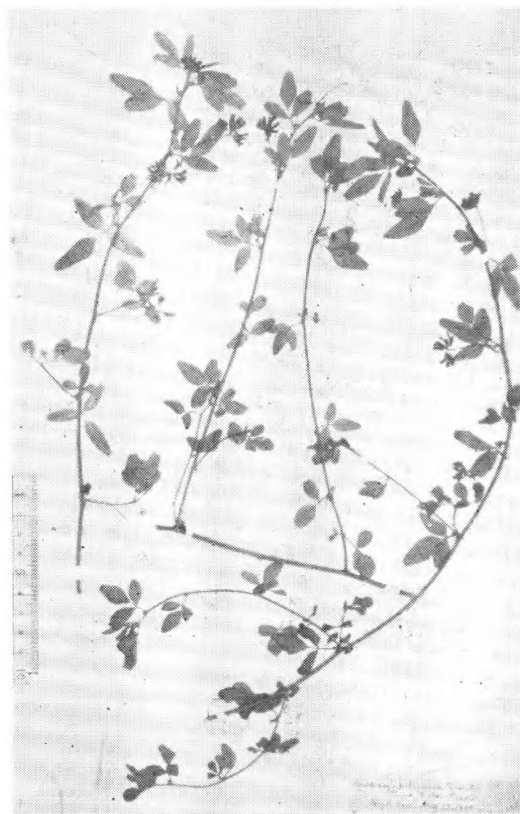
Medicago hispida Gaertn.
Oldham 190. 台湾, E. Faber 40,87 上海



Medicago lupulina L.
Wright 38. 琉球, Hance 666 香港
Bushell 北京附近



Medicago minima (L.) Lam.
A. N. Steward ex Herb. Nanking 1903.
南京

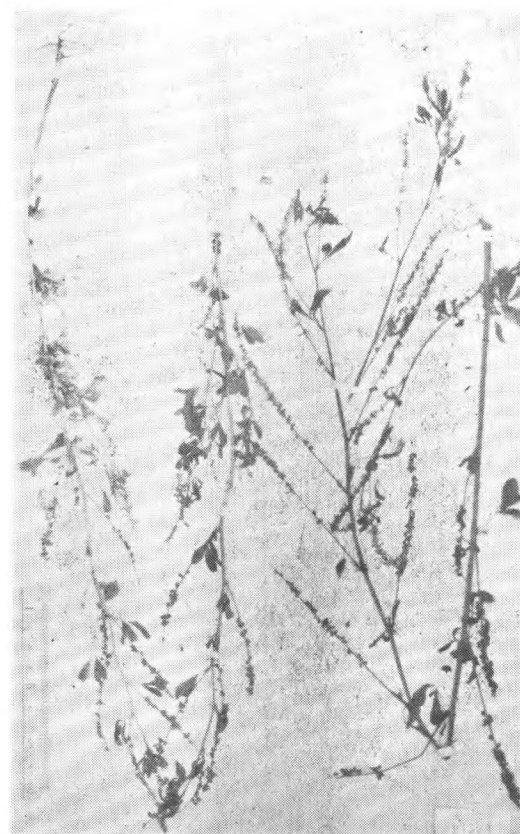


Medicago ruthenica (Linn.)
Chaney 562 内蒙草地

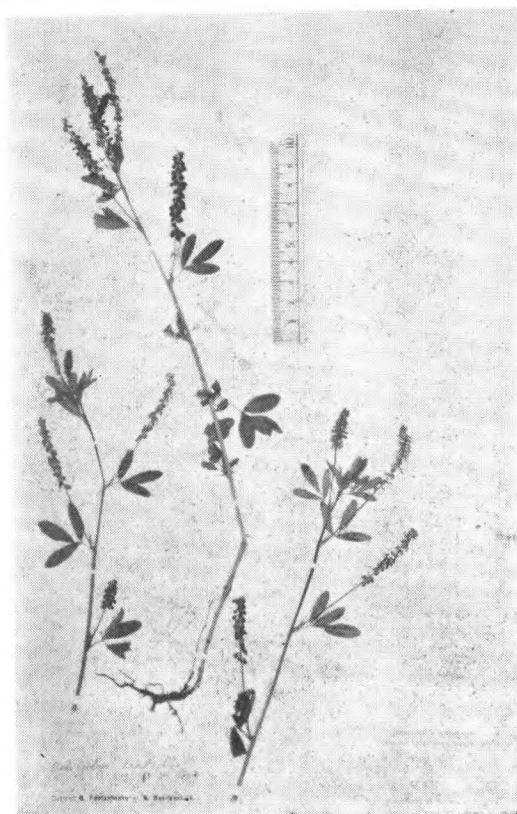
草木犀屬 *Melilotus* Juss.



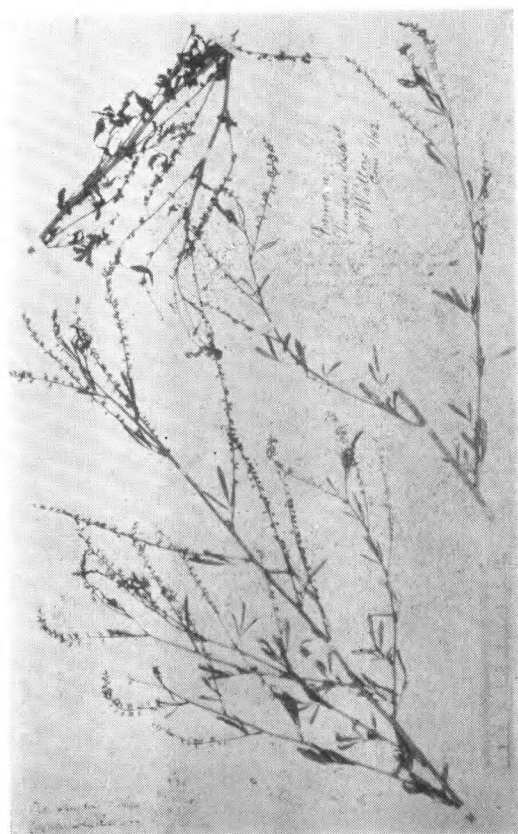
Melilotus alba (L.) Desr.
Forbes 山东芝罘山



Melilotus altissima Thuil.
Faber 743 长江, Ford 广东西江



Melilotus dentata (M. et K.) Persoon
Appelton 660. 帕米尔天山

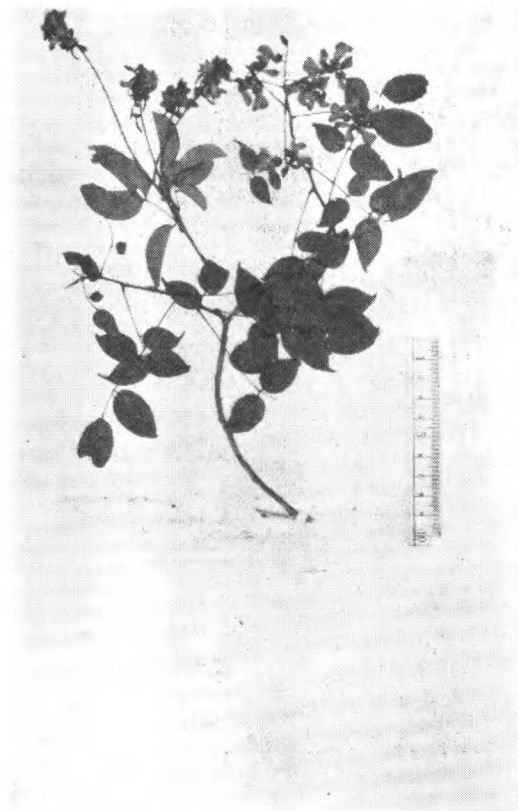


Melilotus indica Allioni
Ross 336. 辽宁瀋阳,
Wattes 91. 台湾淡水

雞血藤屬 *Millettia* Wight et Arn.



Melilotus suaveolens Ledeb.
Bretschneider 179. 北京



Millettia Championi Bth.
Champ. (type) 香港



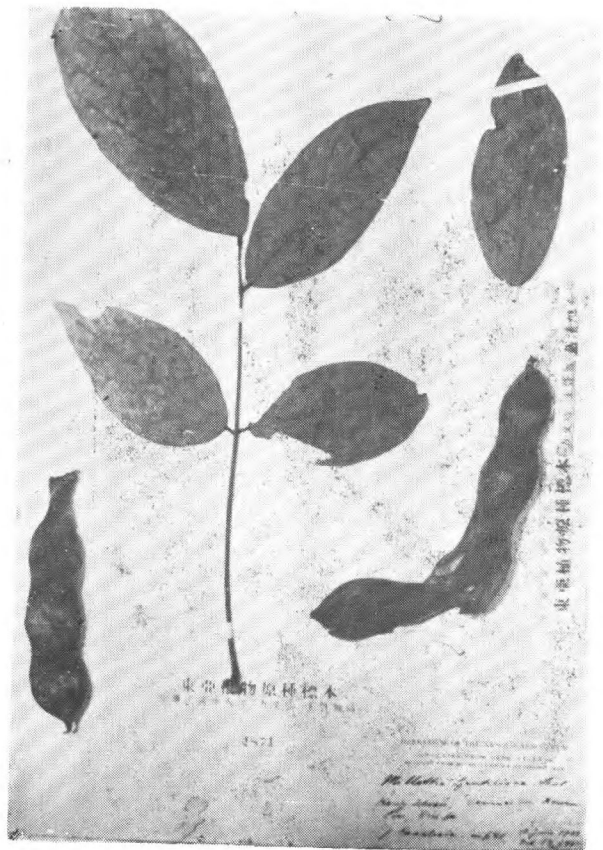
Millettia Cubitti Dunn
Henry 10939 (type) 云南红河独板



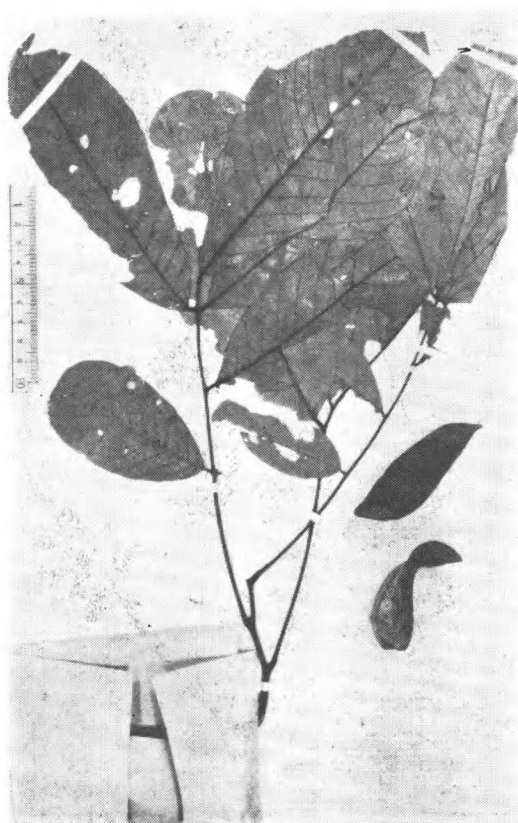
Millettia Dielsiana Harms
Wils. 3412 四川



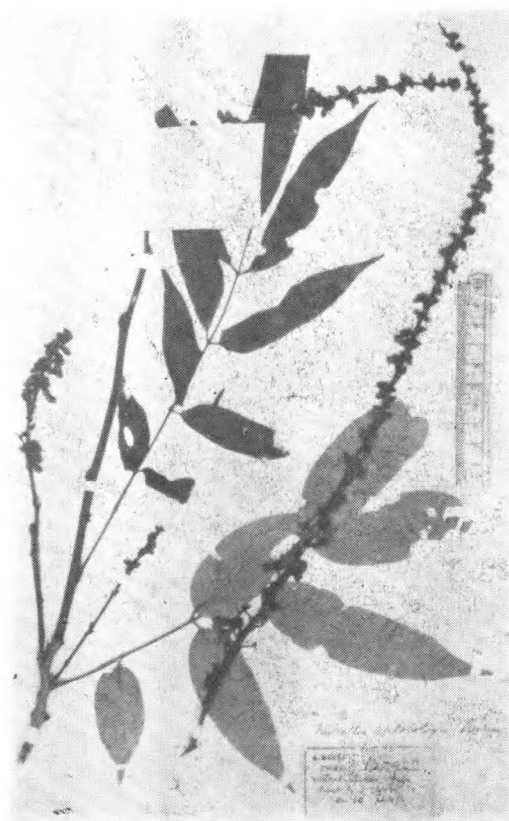
Millettia Fordii Dunn
Ford 62 (type) 广东



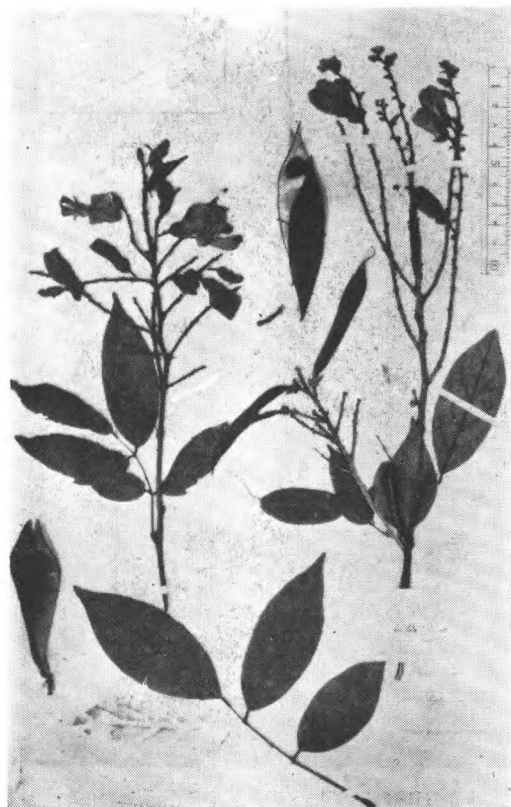
Millettia Gentiliana Lévl.
Cavalerie 641, (type) 贵州黄草壩



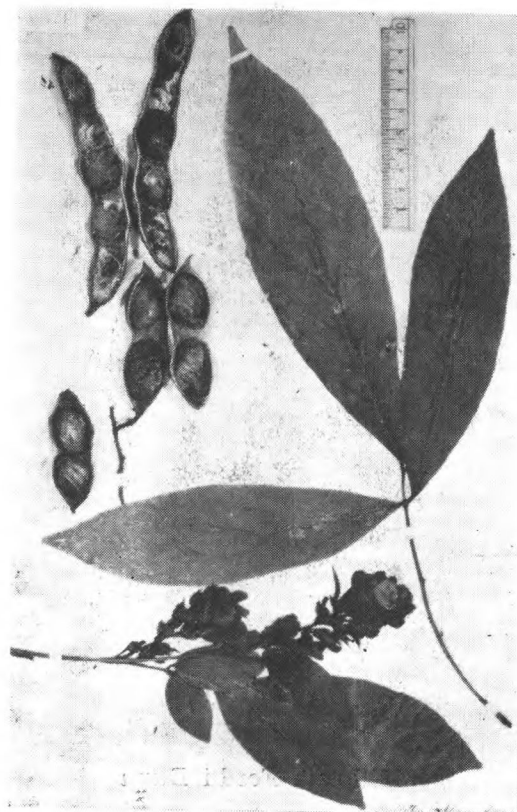
Millettia lasiopetala (Hay.) Merr.
McClure 8043. 海南那大笔架岭



Millettia leptobotrya Dunn
Henry 12792A, (type) 云南思茅



Millettia nitida Bth.
Millett (type) 广东香港



Millettia oosperma Dunn
Henry 11670C (type) 云南蒙自