

Cut

n.y.

National acad.
of design
1906 Winter

1906

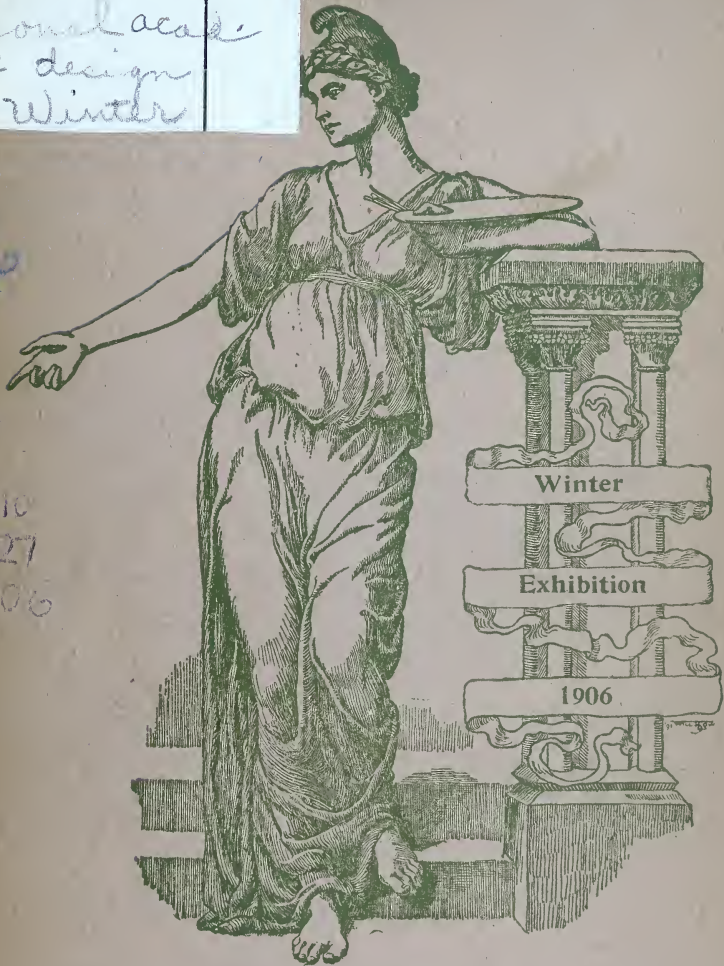
REF

N

6510

N27

1906



NATIONAL ACADEMY
OF DESIGN

M. Knoedler & Co.

invite attention to their
carefully selected collection of

PAINTINGS

and Water Colors of various schools

Old English Mezzotints
and Colored Sporting Prints

355 Fifth Avenue

Cor. 34th St., N. Y.

London :

15 Old Bond Street

Paris :

23 Place Vendôme

PAINTINGS BY AMERICAN ARTISTS

CHOICE EXAMPLES ALWAYS ON VIEW

FREQUENT SPECIAL EXHIBITIONS

ALSO A FINE SELECTION OF

VOLKMAR POTTERY

WILLIAM MACBETH

450 Fifth Avenue

New York

SCHAUS' ART GALLERIES

415 FIFTH AVENUE
BETWEEN 37TH AND 38TH STREETS

NEW YORK

HIGH CLASS OIL PAINTINGS
DUTCH WATER COLORS
FINE ENGRAVINGS AND ETCHINGS
ARTISTIC FRAMING

ILMAN COLLAMORE & CO.

IMPORTERS OF

Rare China

Artistic Faiences

Oriental Porcelains,



Rich Cut Glass,

Plates,

and Bric-a-Brac.

*Fifth Avenue and 30th Street,
New York.*

THE FIRST "BANK OF DEPOSIT" THAT PROVIDED SEPARATE
BANKING FACILITIES FOR WOMEN, A.D. 1869

JAMES STILLMAN, President

JOHN L. RIKER, Vice-President

J. S. CASE, Cashier

WM. A. SIMONSON, 2d Vice-President

WM. PABST, Asst. Cashier

The Second National Bank

OF THE CITY OF NEW YORK

Fifth Avenue, corner 23d Street (under Fifth Avenue Hotel)

—AND—

Fifth Avenue Safe Deposit Company

Capital, Surplus and Undivided Profits, \$1,760,000

Fifth Avenue, cor. 23d Street (Fifth Avenue Hotel)



Digitized by the Internet Archive
in 2016



NO. 92. PORTRAIT OF MISS FAIR.

BY A. BREWSTER SEWELL, A.N.A.

National Academy of Design

WINTER EXHIBITION

1906

HELD AT 215 WEST FIFTY-SEVENTH STREET
NEW YORK

OPEN DECEMBER 22D 1906 TO JANUARY 19TH 1907
10 A.M. TO 6 P.M. AND 8 P.M. TO 10 P.M.

ILLUSTRATED
CATALOGUE

PRICE, TWENTY-FIVE CENTS

The Knickerbocker Press, New York

THE GETTY CENTER
LIBRARY

The National Academy of Design

Founded 1825

and the

Society of American Artists

Founded 1877

were united

April 7th, 1906

All members of the Society of American Artists

becoming members of

The National Academy of Design

INDEX TO ILLUSTRATIONS.

ARTIST	NO.
Barse, G. R., Jr., N.A.....	56
Beal, Gifford.....	74
Browne, Matilda.....	315
Carlsen, Emil, N.A.....	351
Cox, Louise (Mrs. Kenyon Cox), A. N. A.....	318
Dougherty, Paul, A.N.A.....	347
Drake, W. H. A.N.A.....	35
Foote, Will Howe.....	349
Henri, Robert, N.A.....	306
Loeb, Louis, N. A.....	292
Mora, F. Luis, N. A.....	46
Newell, G. Glenn.....	153
Norton, William E.....	260
Redfield, Edward W, N. A.....	240
Sewell, A. Brewster, A. N. A. (Frontispiece).....	92
Thorne, William, A. N. A.	242
Walcott, H. M., A.N.A.....	297

COPYRIGHT 1906 BY THE
NATIONAL ACADEMY OF DESIGN

OFFICERS OF THE
NATIONAL ACADEMY OF DESIGN

1906-1907

COUNCIL.

FREDERICK DIELMAN, PRESIDENT.
HERBERT ADAMS, VICE-PRESIDENT.
H. W. WATROUS, CORRESPONDING SECRETARY.
WILL H. LOW, RECORDING SECRETARY.
LOCKWOOD DE FOREST, TREASURER.

F. D. MILLET,	J. C. NICOLL,
KENYON COX,	FRANCIS C. JONES,
BEN FOSTER,	WM. SERGEANT KENDALL.

JURY OF SELECTION.

HERBERT ADAMS,	SAMUEL ISHAM,
J. W. ALEXANDER,	H. BOLTON JONES,
EDWIN H. BLASHFIELD,	WM. SERGEANT KENDALL,
EMIL CARLSEN,	FREDERICK W. KOST,
WILLIAM M. CHASE,	WILL H. LOW,
CARLTON T. CHAPMAN,	GEORGE W. MAYNARD,
KENYON COX,	FRANK D. MILLET,
ELLIOT DAINGERFIELD,	J. FRANCIS MURPHY,
LOUIS PAUL DESSAR,	LEONARD OCHTMAN,
FREDERICK DIELMAN,	EDWARD H. POTTHAST,
BEN FOSTER,	WILLIAM T. SMEDLEY,
ROBERT HENRI,	HENRY B. SNELL,
WILLIAM H. HOWE,	C. Y. TURNER,
	IRVING R. WILES.

HANGING COMMITTEE.

FRANCIS C. JONES,	LOUIS LOEB,
FRED'K G. R. ROTH.	

CLERK OF THE ACADEMY.

PHILIP CARL SÜS.

ACADEMICIANS.

	ELECTED.
ABBAY, EDWIN A. Morgan Hall, Fairford, Gloucestershire, England.	1902
ADAMS, HERBERT. 131 West 11th St.,	1899
ALEXANDER, J. W. 123 East 63d St.,	1902
BARSE, GEORGE R., Jr. Katonah, Westch. Co., N. Y.,	1899
BEAUX, CECILIA. East Gloucester, Mass.,	1902
BECKWITH, J. CARROLL. 58 West 57th St.,	1894
BENSON, FRANK W. Salem, Mass.,	1905
BLASHFIELD, EDWIN H. 48 West 59th St.,	1888
BITTER, KARL. Weehawken, N. J.,	1903
BREVOORT, J. R. 390 N. Broadway, Yonkers, N. Y.,	1863
BRIDGMAN, FRED'K A. 146 Boulevard Malesherbes, Paris.	1881
BRISTOL, JOHN B. 120 East 23d St.,	1875
BROWN, J. G. 51 West 10th St.,	1863
BRUSH, GEORGE DE FOREST (Elect). . Dublin, N. H.,	1906
BUTLER, GEORGE B. 116 West 88th St.,	1873
BUTLER, HOWARD RUSSELL. 35 Wall St.,	1899
CALVERLEY, CHARLES. Essex Fells, Caldwell, N. J.,	1875
CARLSEN, EMIL. 43 East 59th St.,	1906
CHASE, WILLIAM M. 303 Fifth Ave.,	1890
CHURCH, F. S. Carnegie Hall,	1885
CLINEDINST, B. WEST. 1000 Madison Ave.,	1898
COLMAN, SAMUEL. 267 Central Park, West,	1862
COX, KENYON. 145 West 55th St.,	1903
CRANE, BRUCE. P. O. Box 1692, N. Y. City,	1901
CURRAN, C. C. 16 West 61st St.,	1904
DAINGERFIELD, ELLIOTT. 145 West 55th St.,	1906
DANA, W. P. W. 57 Onslow Gardens, S. W., London, England.	1863
DAVIS, C. H. Mystic, Conn.,	1906
DEARTH, H. G. Carnegie Hall,	1906
DE FOREST, LOCKWOOD. 7 East 10th St.,	1898
DESSAR, LOUIS PAUL (Elect). 27 West 67th St.,	1906

ELECTED.

DEWING, THOMAS W.....	51 West 10th St.,	1888
DIELMAN, FREDERICK.....	51 West 10th St.,	1883
DU MOND, FRANK V. (Elect)....	27 West 67th St.,	1906
DUVENECK, FRANK (Elect).Art Academy, Cincinnati,		1906
EAKINS, THOMAS.	1729 Mt. Vernon St., Philadelphia,	
Pa.....		1902
FOSTER, BEN.....	253 West 42d St.,	1904
FOWLER, FRANK.....	106 West 55th St.,	1899
FRENCH, DANIEL CHESTER.....	125 West 11th St.,	1901
GAUL, GILBERT..	610½ Church St., Nashville, Tenn.,	1882
GRAFLY, CHARLES.	2200 Arch St., Philadelphia Pa.,	1905
GRISWOLD, C. C.....	262 West 12th St.,	1867
GUY, SEYMOUR JOSEPH.....	51 West 10th St.,	1867
HALL, GEORGE HENRY.....	96 Fifth Ave.,	1868
HAMILTON, HAMILTON.....	138 Fremont St.,	
Peekskill, N. Y.....		1889
HARRISON, ALEXANDER.....	118 East 40th St.,	1901
HARTLEY, J. S.....	145 West 55th St.,	1891
HASSAM, CHILDE (Elect).....	27 West 67th St.,	1906
HENNESSY, W. J.....	Saville Club, London, Eng.,	1863
HENRI, ROBERT.....	80 West 40th St.,	1906
HENRY, E. L.....	7 West 43d St.,	1869
HOMER, WINSLOW.....	Scarboro, Me.,	1865
HOWE, WILLIAM H.....	Bronxville, N. Y.,	1897
HOWLAND, ALFRED C.....	318 West 57th St.,	1882
INNESS, GEORGE, Jr.....	145 West 58th St.,	1899
ISHAM, SAMUEL.....	80 West 40th St.,	1906
JOHNSON, DAVID.....	Walden, Orange Co., N. Y.,	1861
JONES, FRANCIS C.....	33 West 67th St.,	1894
JONES, H. BOLTON.....	33 West 67th St.,	1883
KENDALL, WM. SERGEANT.....	26 West 8th St.,	1905
KOST, F. W. (Elect).....	146 West 55th St.,	1906
LAFARGE, JOHN.....	51 West 10th St.,	1869
LIPPINCOTT, WILLIAM H.....	7 West 43d St.,	1897
LOEB, LOUIS.....	58 West 57th St.,	1906
LOW, WILL H.....	135 East 40th St.,	1890
MACMONNIES, FREDERICK W.....	Giverny-par-	
Vernon, Eure, France.....		1906
MACNEIL, HERMON A. (Elect)...	145 West 55th St.,	1906

	ELECTED.
MAGRATH, WILLIAM.....	11 East 14th St., 1876
MAYNARD, GEORGE W.....	7 West 43d St., 1885
MELCHERS, GARI (Elect)...	20 Rue Galvani, Paris, 1906
France	
MILLER, CHARLES H.....	Queens, L. I., 1875
MILLET, F. D.....	6 East 23d St., 1885
MOELLER, LOUIS.....	Edenwald, Wakefield, N. Y., 1895
MORA, F. LUIS.....	142 East 18th St., 1906
MORAN, THOMAS.....	24 West 22d St., 1884
MOWBRAY, H. SIDDONS.....	66 West 11th St., 1891
MURPHY, J. FRANCIS.....	222 West 23d St., 1887
NEHLIG, VICTOR.....	Abroad, 1870
NICOLL, J. C.....	51 West 10th St., 1885
NIEHAUS, CHARLES H.....	148 West 36th St., 1906
OCHTMAN, LEONARD.....	Cos Cob, Conn., 1904
PALMER, WALTER L.	5 Lafayette St., Albany, N. Y., 1897
PARRISH, MAXFIELD.....	Windsor, Vt., 1906
PARTON, ARTHUR.....	318 West 57th St., 1884
PERRY, E. WOOD.....	2 West 16th St., 1869
PORTER, BENJAMIN C.	3 North Washington Sq., 1880
POTTER, EDWARD C. (Elect)...	Greenwich, Conn., 1906
POTTHAST, EDWARD H.....	318 West 57th St., 1906
PROCTOR, A. PHIMISTER. . .	Bedford, Westchester Co., 1904
N. Y.,.....	
RANGER, HENRY W. (Elect).....	727 West 67th St., 1906
REDFIELD, EDWARD W.....	Centre Bridge, Pa., 1906
REID, ROBERT.....	142 East 33d St., 1906
ROTH, FRED'K G. R.....	27 Cottage Place, White 1906
Plains, N. Y.....	
RYDER, ALBERT P. (Elect).....	308 West 15th St., 1906
SARGENT, JOHN S.....	33 Tite St., Chelsea, S. W., 1897
London, Eng.....	
SELLSTEDT, L. G.....	78 West Mohawk St., Buffalo, 1875
N. Y.....	
SHATTUCK, AARON D.....	Granby, Conn., 1861
SHIRLAW, WALTER.....	39 West 25th St., 1888
SHURTLEFF, R. M.....	44 West 22d St., 1890
SMEDLEY, WM. T.....	Bronxville, N. Y., 1905
SMILLIE, GEORGE H.....	156 East 36th St., 1882
SMILLIE, JAMES D.....	440 West End Ave., 1876

ELECTED.

SNELL, HENRY B.....	37 West 22d St.,	1906
SAINT-GAUDENS, AUGUSTUS.....	Windsor, Vt.,	1889
TARBELL, EDMUND C. (Elect).....	Tavern Club, Boston,	
Mass.....		1906
THAYER, ABBOTT H.....	Monadnock, N. H.,	1901
TIFFANY, LOUIS C.....	27 East 72d St.,	1880
TRYON, D. W.....	226 West 59th St.,	1891
TURNER, C. Y.....	Carnegie Hall,	1886
VEDDER, ELIHU.....	Abroad,	1865
VINTON, FREDERIC P.....	247 Newbury St., Boston,	1891
VOLK, DOUGLAS.....	215 West 57th St.,	1899
VONNOH, ROBERT W.....	33 West 67th St.,	1906
WALKER, HENRY O.....	Lakewood, N. J.,	1902
WALKER, HORATIO.....	Care of N. E. Montross,	
372 Fifth Ave.....		1891
WARD, EDGAR M.....	51 West 10th St.,	1883
WARD, J. Q. A.....	119 West 52d St.,	1863
WATROUS, HARRY W.....	58 West 57th St.,	1895
WEIR, JOHN F., Yale School of Art, New Haven,		
Conn.....		1866
WEIR, J. ALDEN.....	51 West 10th St.,	1886
WELDON, C. D.....	51 West 10th St.,	1897
WHITRIDGE, WORTHINGTON.....	Summit, N. J.,	1861
WIGGINS, J. CARLETON.....	1079 Dean St., B'klyn,	1906
WILES, IRVING R.....	106 West 55th St.,	1897
WILMARTH, LEMUEL E.....	352 Adelphi St., Brooklyn,	1873
YEWELL, GEORGE H.....	51 West 10th St.,	1880

ASSOCIATES.

ALLEN, THOMAS	12 Commonwealth Ave., Boston.
ARMSTRONG, D. MAITLAND	61 Washington Sq. South.
BACHER, OTTO H.	Lawrence Park, Bronxville, N. Y.
BALLIN, HUGO	146 West 55th St.
BELL, E. A.	226 Central Park, South
BIRNEY, WILLIAM VERPLANCK	58 West 57th St.
BOGERT, GEORGE H.	Abroad.
BOSTON, JOSEPH H.	203 Montague St., Brooklyn.
BRICHER, A. T.	2 West 14th St.
BRIDGES, MISS FIDELIA	Canaan, Conn.
BUNCE, WM. GEDNEY	Hartford, Conn.
BURROUGHS, BRYSON	50 East 86th St.
CALDER, ALEXANDER S.	534 S. Euclid Ave., Pasadena, Cal.
CHAPMAN, CARLTON T.	58 West 57th St.
CHASE, ADELAIDE COLE	95 Beacon St., Boston, Mass.
CLARK, WALTER	134 Meadow Lane, New Rochelle, N. Y.
CLARKE, THOMAS SHIELDS	50 Riverside Drive.
COFFIN, WM. A.	58 West 57th St.
COLE, TIMOTHY (Elect)	Abroad.
COLEMAN, C. C.	care of National Academy of Design
COOK, WALTER (Elect)	3 West 29th St.
COUSE, E. IRVING	58 West 57th St.
COX, LOUISE	75 West 55th St.
CROWNINSHIELD, FREDERICK	314 West End Ave.
CRAIG, THOMAS B.	Rutherford, N. J.
CUSHING, HOWARD G.	252 Boyleston St., Boston, Mass.
DAY, FRANCIS	27 West 67th St.
DEHAVEN, F.	23 West 24th St.
DELUCE, PERCIVAL	114 East 23d St.
DEWEY, CHARLES MELVILLE	218 West 23d St.
DOUGHERTY, PAUL	27 West 67th St.
DRAKE, W. H.	37 West 22nd St.
EARLE, L. C.	Montclair, N. J.
EATON, C. WARREN	318 West 57th St.
FAXON, WM. BAILEY	152 West 57th St.

FERGUSON, HENRY A.....	226 West 78th St.
FLAGG, MONTAGUE.....	253 West 42d St
FRAZEN, AUGUST.....	Carnegie Hall.
FRAZIER, KENNETH.....	58 East 78th St.
FREER, FREDERICK W.....	224 Ontario St., Chicago.
FULLER, HENRY BROWN.....	Windsor, Vermont.
FULLER, LUCIA FAIRCHILD.....	Windsor, Vermont.
GAUGENGIGL, I. M.....	5 Otis Place, Boston, Mass.
GAY, EDWARD.....	Mount Vernon, N. Y.
GILBERT, CASS (Elect).....	11 East 24th St.
GLACKENS, WM. J.....	3 North Washington Square.
GREEN, FRANK RUSSELL.....	211 West 85th St.
GROLL, ALBERT L. (Elect).....	121 East 23d St.
HARPER, WILLIAM ST. JOHN.....	166 West 107th St.
HARRISON, BIRGE.....	7 West 43d St.
HASTINGS, THOMAS (Elect).....	28 East 41st St.
HERTER, ALBERT.....	578 Fifth Ave.
HILLS, LAURA C.....	66 Chestnut St., Boston, Mass.
HUBBELL, HENRY S.....	125 Blvd., Montparnasse, Paris.
HYDE, WILLIAM H.....	105 East 61st St.
JONGERS, ALPHONSE.....	58 West 57th St.
KEITH, DORA WHEELER.....	115 East 23d St.
KLINE, WM. FAIR.....	244 West 14th St.
KONTI, ISIDORE (Elect).....	292 Riverdale Ave., Yonkers, N. Y.
LATHROP, FRANCIS.....	29 Washington Sq.
LATHROP, W. L.....	New Hope, Pa.
LOCKWOOD, WILTON.....	280 Boyleston St., Boston, Mass.
LOOMIS, CHESTER.....	Englewood, N. J.
LOOP, Mrs. HENRY A.....	Saratoga Springs, N. Y.
LYMAN, JOSEPH.....	Century Club.
MACEWEN, WALTER.....	11 Place Pigalle, Paris, France.
MACMONNIES, MARY F.....	Giverny-par-Vernon, Eure, France.
MARSH, FRED. DANA.....	Nutley, N. J.
MARTINY, PHILIP.....	80 Washington Square.
MAYER, CONSTANT.....	Abroad.
MCCORD, GEORGE H.....	114 East 23d St.
MCKIM, CHARLES F.....	160 Fifth Ave.
MIELATZ, C. F. W. (Elect).....	135 East 15th St.
MOSCHOWITZ, PAUL.....	114 East 23d St.
NIEMEYER, JOHN HENRY	251 Lawrence St., New Haven, Conn.

National Academy of Design

NETTLETON, WALTER	Stockbridge, Mass.
O'DONOVAN, W. R.....	31 St. Nicholas Place.
PARSONS, CHARLES.....	Boonton, N. J.
PEARCE, CHARLES SPRAGUE...	Auvers, Seine-et-Oise, France
PLATT, CHARLES A.....	"The Players" 16 Gramercy Park
POORE, H. R.....	45 Ridge St., Orange, N. J.
POST, GEORGE B. (Elect).....	33 East 17th St.
PRELLWITZ, EDITH MITCHELL.....	247 West 71st St.
PRELLWITZ, HENRY.....	247 West 71st St.
PYLE, HOWARD	Wilmington, Del.
REHN, F. K. M.....	222 West 23d St.
REMINGTON, FREDERIC.....	New Rochelle, N. Y.
RICE, WILLIAM M. J.....	55 West 33d St.
ROBINSON, WILL S.....	202 West 74th St.
SARTAIN, WILLIAM.....	152 West 57th St.
SATTERLEE, WALTER.....	96 Fifth Ave.
SCHOFIELD, W. ELMER .1523	Chestnut St., Philadelphia, Pa.
SCHREYVOGEL, CHARLES....	1232 Garden St., Hoboken, N. J.
SEWELL, AMANDA BREWSTER.....	25 West 67th St.
SEWELL, R. V. V.....	25 West 67th St.
SHERWOOD, ROSINA EMMET.....	251 Lexington Ave.
STORY, GEORGE H.....	230 West 59th St.
STORY, JULIAN.....	The St. James, Philadelphia, Pa.
THORNE, WILLIAM.....	58 West 57th St.
ULRICH, CHARLES F.....	Abroad
VAN BOSKERCK, ROBERT W.....	58 West 57th St.
VAN LAER, A. T.....	30 East 57th St...
VONNOH, BESSIE POTTER.....	33 West 67th St.
WALCOTT, H. M.....	Rutherford, N. J.
WEBB, J. LOUIS.....	32 East 42d St.
WEINMAN, ADOLPH A.....	97 Sixth Ave.
WHITTEMORE, WM. J.....	318 West 57th St.
WOLF, HENRY.....	110 East 91st St.
WOODBURY, CHARLES H....	194 Clarendon St., Boston, Mass.

DECEASED ACADEMICIANS.

	ELECTED.	DIED.
AGATE, FRED S.....	1826	1844
AMES, JOSEPH.....	1870	1872
AUDUBON, V. G.....	1846	1860
BAKER, GEORGE A.....	1851	1880
BEARD, JAMES H.....	1872	1893
BEARD, WILLIAM H.....	1862	1900
BELLOWS, A. F.....	1861	1883
BENNETT, WILLIAM J.....	1828	1844
BIERSTADT, ALBERT.....	1860	1902
BLAUVELT, CHARLES F.....	1859	1900
BLUM, ROBERT.....	1893	1903
BOGLE, JAMES.....	1861	1872
BOUGHTON, GEORGE H.....	1871	1905
BRANDT, CARL L.....	1872	1905
BROWN, HENRY K.....	1851	1886
CAFFERTY, J. H.....	1853	1896
CASILEAR, JOHN W.....	1851	1893
CHAPMAN, JOHN G.....	1836	1889
CHURCH, FREDERIC E.....	1849	1900
COLE, THOMAS.....	1826	1848
COYLE, JAMES.....	1826	1828
CRANCH, CHRISTOPHER P.....	1864	1892
CROPSY, JASPER F.....	1851	1900
CUMMINGS, THOMAS SEIR.....	1826	1894
DANFORTH, M. L.....	1826	1862
DARLEY, F. O. C.....	1852	1888
DE HAAS, M. F. H.....	1867	1895
DE ROSE, A. L.....	1833	1836
DOLPH, J. H.....	1898	1903
DUGGAN, PAUL P.....	1851	1861
DUNLAP, WILLIAM.....	1826	1839
DURAND, ASHER B.....	1826	1886

National Academy of Design

	ELECTED.	DIED.
EDMUNDS, F. W.....	1840	1863
EHNINGER, JOHN W.....	1860	1889
ELLIOTT, CHARLES L.....	1846	1868
EVERS, JOHN.....	1826	1884
FLAGG, GEORGE W.....	1851	1897
FLAGG, JARED B.....	1849	1899
FRAZEE, JOHN.....	1826	1852
FREEMAN, JAMES E.....	1833	1844
FROTHINGHAM, JAMES.....	1831	1864
GIFFORD, R. SWAIN.....	1878	1905
GIFFORD, SANFORD R.....	1854	1880
GIGNOUX, REGIS.....	1851	1882
GRAY, HENRY PETERS.....	1842	1877
GREENE, E. D. E.....	1858	1879
HALL, MISS ANNE.....	1833	1863
HART, JAMES M.....	1859	1901
HART, WILLIAM.....	1858	1894
HASELTINE, W. STANLEY.....	1861	1900
HICKS, THOMAS.....	1851	1890
HOVENDEN, THOMAS.....	1882	1895
HUBBARD, RICHARD W.....	1858	1888
INGHAM, CHARLES C.....	1826	1863
INMAN, HENRY.....	1826	1846
INNESS, GEORGE.....	1868	1894
IRVING, J. B.....	1872	1877
JONES, ALFRED.....	1851	1900
KENSETT, J. F.....	1849	1872
LAMBIN, GEORGE C.....	1868	1896
LANG, LOUIS.....	1852	1893
LAUNITZ, R. E.....	1833	1870
LE CLEAR, THOMAS.....	1863	1882
LEUTZ, E.....	1860	1868
LINTON, WILLIAM J.....	1882	1897
LOOP, HENRY A.....	1861	1895
MARSIGLIA, G.....	1826	1850
MARTIN, HOMER D.....	1874	1897
MAVERICK, PETER.....	1826	1831
MAYR, C.....	1849	1850

Deceased Academicians

15

	ELECTED.	DIED.
McENTEE, JARVIS.....	1861	1891
MIGNOT, LOUIS R.....	1859	1870
MINOR, ROBERT C.....	1897	1904
MOONEY, EDWARD.....	1840	1887
MORSE, S. F. B.....	1826	1872
MORTON, JOHN L.....	1831	1871
MOUNT, S. A.....	1842	1868
MOUNT, WILLIAM S.....	1832	1868
PAGE, WILLIAM.....	1836	1885
PARADISE, J.....	1826	1834
PEALE REMBRANDT.....	1826	1860
POTTER, EDWARD T.....	1826	1826
PRATT, R. M.....	1851	1880
PRUD'HOMME, JOHN F. E.....	1846	1892
QUARTLEY, ARTHUR.....	1886	1886
REINAGLE, HUGH.....	1826	1834
RICHARDS, T. ADDISON.....	1851	1900
RICHARDSON, ANDREW.....	1833	1876
RITCHIE, ALEXANDER H.....	1871	1895
ROBBINS, HORACE WOLCOTT.....	1878	1904
ROGERS, JOHN.....	1863	1904
ROGERS, NATHANIEL.....	1826	1844
ROSSITER, THOMAS P.....	1849	1871
SHEGOGUE, JAMES H.....	1843	1872
SHUMWAY, HENRY C.....	1832	1844
SMILLIE, JAMES.....	1851	1885
SONNTAG, WILLIAM L.....	1861	1900
SPENCER, F. R.....	1846	1875
STAIGG, RICHARD M.....	1861	1881
STEARNS, JUNIUS B.....	1849	1885
STONE, WILLIAM O.....	1859	1875
SUYDAM, JAMES A.....	1861	1865
TAIT, ARTHUR F.....	1858	1905
THOMPSON, LAUNT.....	1862	1894
THOMPSON, MARTIN E.....	1826	1877
THOMPSON, WORDSWORTH.....	1875	1896
TOWN, ITHIEL.....	1826	1851
TWIBILL, GEORGE W.....	1833	1836

National Academy of Design

	ELECTED.	DIED.
VAN ELTEN, KRUSEMAN.....	1883	1904
VERBRYCK, CORNELIUS.....	1841	1844
WARNER, OLIN L.....	1889	1896
WEIR, ROBERT W.....	1829	1889
WENZLER, A. H.....	1860	1871
WHITE, EDWIN.....	1849	1877
WHITEHORNE, JAMES.....	1833	1888
WOOD, THOMAS WATERMAN.....	1871	1903
WRIGHT, CHARLES C.....	1826	1853
WYANT, ALEXANDER H.....	1869	1892

DECEASED ASSOCIATES.

	ELECTED.	DIED.
ADAMS, JOSEPH ALEXANDER.....	1833	1880
AGATE, ALFRED T.....	1832	1846
AUDUBON, J. W.....	1847	1862
BLONDELL, J. D.....	1854	1877
BOGARDUS, Mrs. M.....	1845	1888
BOUTELLE, D. W. C.....	1852	1884
BRADFORD, WILLIAM.....	1874	1892
BROWN, J. APPLETON.....	1896	1902
BRYANT, HENRY.....	1837	1881
BUNNER, A. F.....	1890	1897
CARPENTER, FRANCIS B.....	1852	1900
CHAMPNEY, J. WELLS.....	1882	1903
CHASE, HARRY.....	1883	1889
CHENEY, S. W.	1848	1856
CLONNEY, JAMES G.....	1834	1867
CLOVER, LEWIS P.....	1840	1896
COLYER, VINCENT.....	1849	1888
CRANCH, JOHN.....	1853	1891
CUMMINGS, THOMAS A.....	1852	1859
DALLAS, J.....	1854	1857
DAVIS, ALEXANDER JACKSON.....	1827	1892
DEAS, CHARLES.....	1839	1867
DIX, CHARLES TEMPLE.....	1861	1873
DODGE, JOHN W.....	1832	1894
EATON, C. HARRY.....	1894	1901
EATON, J. O.....	1866	1875
FANSHAW, S. R.....	1841	1888
FISHER, ALANSON.....	1842	1884
FITCH, JOHN L.....	1870	1895
FULLER, GEORGE.....	1853	1884
GREATOREX, Mrs. ELIZA.....	1869	1897
HAYS, W. J.....	1852	1875

	ELECTED.	DIED.
HILL, JOHN.....	1833	1879
HOPE, JAMES.....	1871	1892
HOWS, JOHN A.....	1862	1874
INMAN, JOHN O'BRIEN.....	1865	1896
IRWIN, BENONI.....	1889	1896
JEWETT, WILLIAM S.....	1845	1873
JONES, THOMAS D.....	1853	1881
KAPPES, ALFRED.....	1887	1894
KUNTZE, EDW. J.....	1869	1870
KYLE, JOSEPH.....	1849	1863
LANMAN, CHARLES.....	1842	1895
LAY, OLIVER I.....	1876	1890
LAZARUS, JACOB H.....	1849	1891
LOPEZ, CHARLES ALBERT.....	1906	1906
MARCHANT, E. D.....	1833	1887
MATTESON, THOMAS H.....	1847	1884
MAY, EDWARD H.....	1849	1887
McILHENNEY, C. MORGAN.....	1892	1904
MEGAREY, JOHN.....	1844	1845
MORGAN, WILLIAM.....	1862	1900
MOUNT, HENRY S.....	1827	1841
NEWCOMBE, GEORGE W.....	1832	1845
NICHOLS, EDWARD W.....	1861	1871
NIMS, JEREMIAH.....	1841	1841
OAKLEY, GEORGE.....	1827	1869
ODDIE, WALTER M.....	1833	1865
OGILVIE, CLINTON.....	1864	1900
PARADISE, JOHN W.....	1833	1862
PHILIP, F. W.....	1833	1841
PICKNELL, WILLIAM L.....	1891	1897
POPE, JOHN.....	1857	1880
POWELL, W. H.....	1854	1879
RANNEY, WILLIAM.....	1850	1857
REINHART, B. F.....	1871	1885
REINHART, CHARLES STANLEY.....	1891	1896
RONDEL, FREDERICK.....	1861	1892
RYDER, PLATT P.....	1868	1896
SAINTIN, JULES ÉMILE.....	1859	1894

Deceased Associates

19

	ELECTED.	DIED.
SCOTT, JULIEN.....	1870	1901
SMITH, THOMAS L.....	1869	1884
SWAIN, WILLIAM.....	1836	1847
TALBOT, JESSE.....	1845	1879
THOMPSON, CEPHAS G.....	1861	1888
THOMPSON, JEROME.....	1851	1886
THOMPSON, THOMAS.....	1834	1852
THORNDYKE, GEORGE Q.....	1861	1887
VOLLMERING, JOSEPH.....	1853	1887
WALDO, SAMUEL L.....	1847	1861
WARREN, A. W.....	1863	1873
WEINDEL, CARL.....	1839	1845
WIGHTMAN, THOMAS.....	1849	1888
WILLIAMSON, JOHN.....	1861	1885
WILSON, MATTHEW.....	1843	1892
WITT, J. H.....	1885	1901
WOTHERSPOON, W. W.....	1848	1888
WUST, ALEXANDER.....	1861	1876

DECEASED MEMBERS OF THE SOCIETY OF AMERICAN ARTISTS

	ELECTED.	DIED.
BLUM, ROBERT FREDERICK.....	1882	1903
BROWN, JOHN APPLETON.....	1892	1902
BUNKER, DENNIS MILLER.....	1885	1890
COLE, JOSEPH FOXCROFT.....	1890	1892
COLLINS, ALFRED QUINTON.....	1889	1903
DUBOIS, CHARLES E.....	1880	1885
EICHELBERGER, ROBERT A.....	1888	1890
EVANS, JOE.....	1891	1898
FITZ, BENJAMIN RUTHERFORD.....	1888	1891
FULLER, GEORGE.....	1880	1884
GIFFORD, ROBERT SWAIN.....	1877	1905

Society of American Artists

	ELECTED.	DIED.
HARDIE, ROBERT GORDON	1897	1904
HOVENDEN, THOMAS	1881	1895
PICKNELL, WILLIAM LUCIEN	1880	1897
QUARTLEY, ARTHUR	1881	1886
REINHART, CHARLES STANLEY	1882	1896
ROBINSON, THEODORE	1881	1896
STEWARDSON, EDMUND A	1891	1892
TABER, EDWARD MARTIN	1895	1896
TYLER, ALICE KELLOGG	1891	1899
WARNER, OLIN LEVI	1877	1896
WHITMAN, SARAH DE ST. PRIE	1880	1904
WYANT, ALEXANDER H	1878	1892

On April 7th, 1906, the National Academy of Design and the Society of American Artists were united.

THE FOUNDERS.

On the 8th of November, 1825, a number of young Artists and Students established the New York Drawing Association; and soon after, on the 19th of January, 1826, they resolved themselves into a new organization, to be known as the National Academy of the Arts of Design. They thereupon chose from their number fifteen artists, who were directed to choose fifteen others, the thirty thus selected to constitute the New Society.

Of this body of Founders of the National Academy of Design, whose names are here recorded, the last survivor, Thomas S. Cummings, N.A., who was for many years the Treasurer, and at one time the Vice-President, of the Academy, died September 25, 1894.

THE FIRST FIFTEEN.

CUMMINGS, THOMAS S.	MARSIGLIA, G.
DANFORTH, M. L.	MAVERICK, PETER.
DUNLAP, WILLIAM.	MORSE, S. F. B.
DURAND, ASHER B.	POTTER, EDWARD T.
FRAZEE, JOHN.	REINAGLE, HUGH.
INGHAM, CHARLES C.	TOWN, ITHIEL.
INMAN, HENRY.	WALL, W. G.
WRIGHT, CHARLES C.	

THE SECOND FIFTEEN.

AGATE, FRED. S.	PARADISE, JOHN W.
ANDERSON, ALEXANDER J.	PARADISE, J.
COLE, THOMAS.	PEALE, REMBRANDT.
COYLE, JAMES.	ROGERS, NATHANIEL.
EVERS, JOHN.	THOMPSON, MARTIN E.
JEWETT, WILLIAM S.	VANDERLYN, JOHN.
MAIN, WILLIAM.	WALDO, SAMUEL.
WILSON, D. W.	



IN THE LIFE CLASS.

Drawn by a Member.

DEPARTMENT OF SCHOOLS.

ALL CLASSES FREE TO STUDENTS ADMITTED BY
THE SCHOOL COMMITTEE.

In the list of students of the National Academy for the past eighty years may be found the names of nearly all the most eminent artists of America.

The schools are in session day and evening, from the first Monday in October to the middle of May, and offer every facility for study and development to art students.

The ANTIQUE Rooms, equipped with a very large and varied collection of casts, are open to all students daily, from 8 A.M. to 10 P.M. The Day Classes are in charge of Francis C. Jones, N.A., and Emil Carlsen, N.A. The Night Class is in charge of Edgar M. Ward, N.A.

The DAY LIFE Classes and the NIGHT LIFE Class are in charge of Edgar M. Ward, N.A.

The PAINTING Classes (for men and for women from 1 to 4 P.M.) are in charge of Geo. W. Maynard, N.A.

The ILLUSTRATION Class (for men and women, from 1 to 4 P.M.) is in charge of Charles Louis Hinton.

The STILL LIFE Class (for men and women, from 9 A.M. to noon, and from 1 to 4 P.M.) is in charge of Francis C. Jones, N.A., and Emil Carlsen, N.A.

The Sculpture Class, from 7 to 10 P.M., is in charge of Hermon A. MacNeil, N.A.

The ETCHING Class is in charge of Charles F. W. Mielatz, A.N.A.

The SKETCH Class, for the study of the draped living model, is open to all the students from 4.30 to 5.30 P.M.

In the COMPOSITION Class, which is designed to develop the inventive and imaginative faculties, original sketches of prescribed subjects are made; it is in charge of Geo. W. Maynard, N.A.

A course of LECTURES ON PERSPECTIVE is given during each annual session by Frederick Dielman, N.A., and also a course of LECTURES ON ART ANATOMY by J. Scott Hartley, N.A.

LECTURES ON THE HISTORY OF PAINTING (illustrated) by A. T. Van Laer, A.N.A.

Other Special Lectures are given from time to time.

The Suydam and Elliott Medals, in silver and bronze, will be awarded in the Life and Antique Schools for the best drawing at the close of each year.

Money prizes from the Cannon and Hallgarten School Funds will also be awarded in the PAINTING and COMPOSITION Classes.

HARRY W. WATROUS, N.A.,
Corresponding Secretary.

SCHOOL COMMITTEE, { WILL H. LOW, N.A.
J. C. NICOLL, N.A.
WM. SERGEANT KENDALL, N.A.

Circulars, containing rules, conditions of admission, and other details, may be had on application to the Clerk of the Academy.

EXTRACTS FROM THE CHARTER.

AS AMENDED AND MADE PERPETUAL

BY THE LAWS OF THE STATE OF NEW YORK, CHAPTER 292,
PASSED APRIL 24TH, 1873.

From Section 2, of the Amendments:

The said Society, in addition to its present corporate powers, may take, receive and hold real and personal property to any amount, by grant, gift, devise or bequest, for the proper uses and purposes of said Society; and may so take and receive the same absolutely or conditionally or in trust, and for any estate or term, or to be held perpetually; and any person or persons may endow said corporation by grant, devise, or bequest made to any trustee or trustees, the principal to be held, managed, and preserved as a perpetual fund and the income to be applied to such uses of said Society as the donor or donors may prescribe.

FORM OF LEGACY TO THE SOCIETY.

I hereby give, devise and bequeath to the Society called the National Academy of Design, chartered by the State of New York.....
.....
for the proper use and purposes of said society.

PRIZES.

THE CARNEGIE PRIZE.

The annual prize of Five Hundred Dollars, instituted by Mr. Andrew Carnegie, is awarded by the jury for the most meritorious oil painting in the Exhibition by an American artist, portraits only excepted, the picture to be the property of the artist. The same artist may not receive the prize in two successive years, and not more than twice in all. The founder of the prize reserves an option for two days after the announcement of the award for the purchase of the prize picture at the listed price.

The Carnegie Prize has been awarded in previous years at the Exhibitions of the Society of American Artists as follows:

1901	AUTUMN	JOHN W. ALEXANDER
1902	OCTOBER FOG	J. FRANCIS MURPHY
1903	THE BOY WITH THE ARROW	DOUGLAS VOLK
1904	AT THE PIANO	CHARLES C. CURRAN
1905	THE DAWN	LOUIS LOEB
1906	JUNE*	CHILDE HASSAM
1906	MISTY NIGHT	BEN FOSTER, N.A.

Awarded at the Winter Exhibition of the Academy.

THOMAS R. PROCTOR PRIZE.

1904, ROBERT VONNOH, A.N.A. 1906, FRANK W. BENSON, N.A.
1905, THOMAS EAKINS, N.A. 1907, WILLIAM T. SMEDLEY, N.A.

Method of Award.

Consent having been obtained from the various parties controlling these prizes, they are awarded by the Jury of Selection at a meeting held in the galleries, after the pictures are hung, in time to announce decisions at the opening of the Exhibition.

* On April 7th, 1906, the National Academy of Design and the Society of American Artists were united.

THE WEBB PRIZE.

The Webb Prize of Three Hundred Dollars was instituted in 1887 by Dr. W. Seward Webb, of New York, and has been awarded at the Exhibitions of the Society of American Artists, as follows:

EXHIBITION	TITLE OF PICTURE	ARTIST
1887	BROOK AND FIELDS	J. FRANCIS MURPHY
1888	WINDMILLS	JOHN H. TWACHTMAN
1889	THE FIRST LEAVES	DWIGHT W. TRYON
1890	WINTER LANDSCAPE	THEODORE ROBINSON
1891	THE RAIN	WILLIAM A. COFFIN
1892	EXPLORERS	RUGER DONOHO
1893	DEERFIELD VALLEY	HENRY G. DEARTH
1894	SPRING	CHARLES A. PLATT
1895	PLAZA CENTRALE, HAVANA	CHILDE HASSAM
1896	GLOUCESTER HARBOR	WILLARD L. METCALF
1897	SIGNS OF SPRING	BRUCE CRANE
1898	EVENING, HONFLEUR	GEORGE H. BOGERT
1899	CLOUDS AND HILLS	W. L. LATHROP
1900	AUTUMN IN BRITTANY	W. E. SCHOFIELD
1901	MISTS OF THE MORNING	BEN FOSTER
1902	EARLY SPRING	H. BOLTON JONES
1903	THE DAWN	LOUIS LOEB
1904	AUTUMN SUNRISE	LEONARD OCHTMAN
1905	NIGHT—OLD WINDHAM	EMIL CARLSEN
1906	THE RIVER DELAWARE	EDWARD W. REDFIELD

There will be no further mention of this prize as it has been discontinued.

SOUTH GALLERY

NO. 1 TO NO. 100 INCLUSIVE.

MEMORANDA.

N.A.—National Academician; A.N.A.—Associate of the National Academy.

☞ For information in regard to Works for Sale, inquire of Mr. H. V. ALLISON, at the desk in the South Gallery.

A commission of ten per cent. will be charged on all sales effected, and all sales of works in the Exhibition effected during the course of the same shall be subject to this commission, whether made by the Academy or the Artist. No work entered for sale shall be withdrawn from sale during the course of the Exhibition except on payment of the commission on listed price.

A commission to execute an exhibited work of sculpture in any material shall be considered a sale.

All payments must be made before the close of the Exhibition to the order of LOCKWOOD DE FOREST, Treasurer, and works sold cannot be delivered until paid for.

NO.	ARTIST
1. TAPPAN ZEE, HUDSON	J. B. Bristol, N.A.
2. NIGHT MISSION	Jerome Myers
3. SOLDIERS' AND SAILORS' MONUMENT	Chas. C. Curran, N.A.
4. THE BLUE ROOM	Eleanor C. Winslow

- | NO. | ARTIST |
|--|---|
| 5. THE ABSENT ONE | W. Verplanck Birney, A.N.A. |
| 6. SPRING | Chas. A. Burlingame |
| 7. OCTOBER | Chas. H. Woodbury, A.N.A. |
| 8. WINDY SEPTEMBER | W. L. Lathrop, A.N.A. |
| 9. MR. ROBERT SCHWARZENBACH | Wilhelm Funk
Owned by Mr. Schwarzenbach. |
| 10. THE POOL—EVENING. | Otto C. Wigand |
| 11. THE PARDONER, THE CANON, THE
HABERDASHER, THE DOCTOR OF
PHYSIC, AND THE MARINER. | R. V. V. Sewell, A.N.A. |
| 12. THE KNIGHT, THE YEOMAN, AND
ATTENDANT. | R. V. V. Sewell, A.N.A. |
| 13. THE NOSTRAND HOMESTEAD | Emma Lilers |
| 14. NEIGHBORS | Freeman Clark |
| 15. YULE-TIDE | Wm. J. Whittemore, A.N.A. |
| 16. HARRY | Edith Mitchell Prellwitz, A.N.A. |
| 17. THE HEART OF THE CITY | C. E. Cookman |



NO. 35. ROBBERS OF THE DESERT.
BY W. H. DRAKE, A.N.A.



NO.	ARTIST
18.	GIRL IN FURS Mrs. Guinness
19.	THE DESERT, SOUTHERN UTAH Thomas Moran, N.A.
20.	A LAZY HERD E. C. Volkert
21.	MOONLIGHT, AMSTERDAM George H. Bogert, A.N.A.
22.	WHERE THE RIVER MEETS THE SEA Joseph Benjamin Davol
23.	MOUNTAIN CLOUDS J. C. Nicoll, N.A.
24.	A GREY DAY IN EARLY SPRING Olive P. Black
25.	THE TERRACE William Thorne, A.N.A.
26.	THE COMING STORM D. J. Gue
27.	THE TIDE IS OUT Edward Gay, A.N.A.
28.	SCHELPENFISHER (HOLLAND) Wm. Ritschel
29.	PORTRAIT OF MY SON Albert Sterner
30.	THE SUMMIT (RAGGED MT., ME.) Gustave Wiegand
31.	BURNING BRUSH Henry R. Poore, A. N. A.

NO.		ARTIST
32.	THE RETURN	C. Myles Collier
33.	PORTRAIT OF MRS. WILFRED WORCESTER	Mary Foote
34.	MIDNIGHT (MAINE)	Gustave Wiegand
35.	ROBBERS OF THE DESERT	W. H. Drake, A.N.A.
36.	A CITY WINTER	Alson Clark
37.	LAND OF THE HOPI INDIAN	A. L. Groll, A.N.A. Elect
38.	AFTER STORM	Henning Rydén
39.	SUMMIT OF THE ALPS	Edward H. Potthast, N.A.
40.	SOLITUDE	Andrew T. Schwartz
41.	ARABELLE	Robert David Gauley
42.	OFF THE FLORIDA COAST	Chas. H. Woodbury, A.N.A.
43.	FERRY, GIUDECCA CANAL	Robert K. Ryland
44.	THE CLIFF	Cullen Yates
45.	SPRING BLOSSOMS	Gustave Wiegand



NO. 46. THE PIRATE AND THE PRISONER.
BY F. LUIS MOR, N.A.



- | NO. | ARTIST |
|-----|---|
| 46. | THE PIRATE AND THE PRISONER
F. Luis Mora, N.A. |
| 47. | APPLE-BLOSSOMS AT MOONRISE
Earl H. Brewster |
| 48. | THE FLUME WAY
Edward F. Rook |
| 49. | AT ANCHOR
H. L. Hildebrandt |
| 50. | PORTRAIT
Childe Hassam, N.A.(Elect) |
| 51. | PORTRAIT OF LADY AND CHILD.
A. Brewster Sewell, A.N.A.
Owned by Geo. W. Bacon, Esq. |
| 52. | SHEEP PASTURE
Wm. S. Robinson, A.N.A. |
| 53. | FIRST SPRING OUTING
Wm. H. Howe, N. A. |
| 54. | CLOUDS AND UPLANDS
Guy C. Wiggins |
| 55. | CONTENTMENT
Matilda Browne |
| 56. | VIS-À-VIS
G. R. Barse, Jr., N.A. |
| 57. | AN INDIAN BOY
E. Irving Couse, A.N.A. |
| 58. | CANAL AT LAMBERTVILLE
Edward W. Redfield, N.A. |
| 59. | A BOULDER
Cullen Yates |

- | NO. | ARTIST |
|-----|--|
| 60. | PORTRAIT OF BOY WITH WHIP
Lydia F. Emmet
Owned by F. R. Appleton, Esq. |
| 61. | THE POOL
Edward Adam Kramer |
| 62. | EARLY MORNING
Ernest Lawson |
| 63. | EDGE OF THE FOREST
A. G. Schulman |
| 64. | THE POEM: A PORTRAIT
Maurice Fromkes
Owned by Craven Betts |
| 65. | NARRAGANSETT BAY
Reynolds Beal |
| 66. | SUMMER
Chas. C. Curran, N.A. |
| 67. | UPLAND ACRES
Bruce Crane, N.A. |
| 68. | LANSALLOS STREET, POLPERRO
Henry B. Snell, N.A. |
| 69. | MACKEREL BOATS
Lewis Herzog |
| 70. | ANNE
Louise Cox (Mrs. Kenyon Cox), A.N.A. |
| 71. | SPRING MORNING
C. G. Voorhees |
| 72. | PORTRAIT OF MRS. J.
Wm. M. Chase, N.A.
Owned by Mrs. Martin Joost |

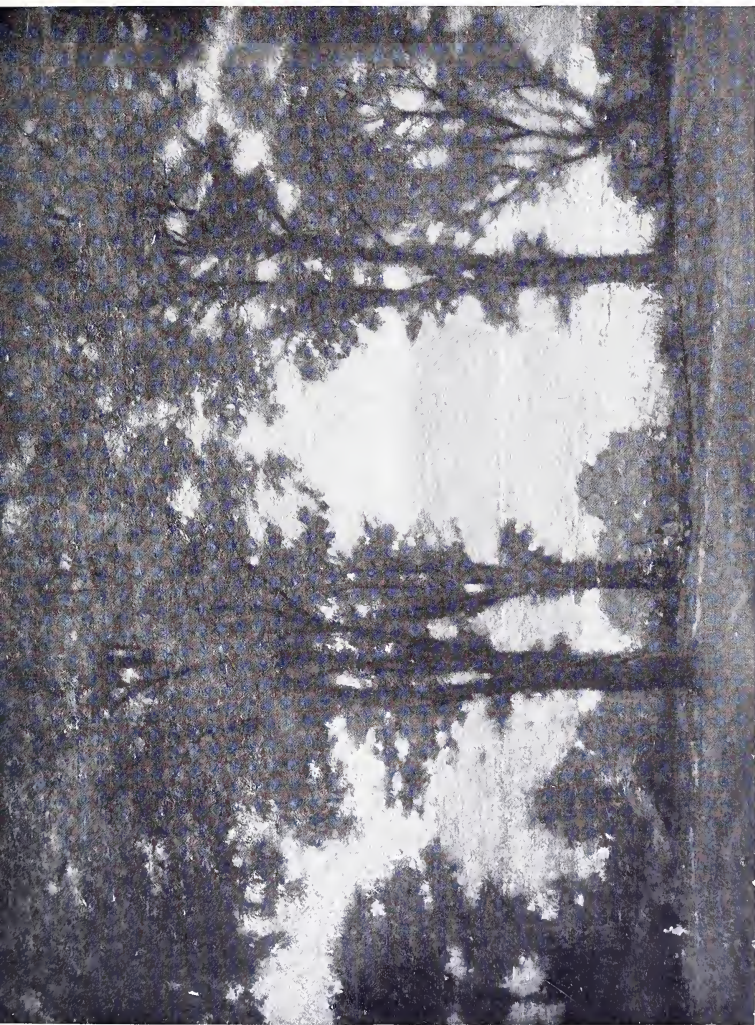


NO. 56. VIS-À-VIS.
BY G. R. BARSE, JR., N.A.



NO.	ARTIST
73. IN THE ADIRONDACKS	R. M. Shurtleff, N.A.
74. HUDSON RIVER IDYL	Gifford Beal
75. BREEZY WEATHER	E. Loyal Field
76. SYLVIA	Edwin A. Abbey, N.A. Owned by Hon. W. A. Clark
77. APPROACHING STORM	Max H. Antlers
78. NOVEMBER MOONRISE	Chas. Warren Eaton, A.N.A.
79. IN THE FOREST	Ernest Meyer
80. DR. FRANCIS W. KITCHEL	F. Luis Mora, N.A.
81. AN OHIO LANDSCAPE	Arthur Schneider
82. THE COMING STORM	Walter Shirlaw, N.A.
83. MOONRISE	Henry C. White
84. A LIGHT ON THE SEA	Winslow Homer, N.A.
85. CLOUDS AT CRAGSMOOR	Chas. C. Curran, N.A.
86. THE VISITOR	F. S. Church, N.A.

- | NO. | ARTIST |
|-----|--|
| 87. | SUMMER, PONT DE L'ARCHE
Robt. W. Van Boskerck, A.N.A. |
| 88. | GIRL IN BLUE
Robert Henri, N.A.
Owned by the National Academy of Design. |
| 89. | A BREEZY DAY
Arthur Parton, N.A. |
| 90. | LUMBERMEN
John Gordon Saxton |
| 91. | OFF SOUNDINGS
Carlton T. Chapman, A.N.A. |
| 92. | PORTRAIT OF MISS FAIR
A. Brewster Sewell, A.N.A.
Owned by Mrs. F. N. Doubleday |
| 93. | COMING FOG
G. Glenn Newell |
| 94. | THE SERGEANT-AT-LAW, THE CLARK,
THE HOST, THE POET CHAUCER, THE
MANCIPLE, AND THE COOK.
Robert V. V. Sewell, A.N.A. |
| 95. | EARLY SPRING
Wm. S. Robinson, A.N.A. |
| 96. | APRIL—WESTCHESTER
A. T. Van Laer, A.N.A. |
| 97. | ARTHUR FOREST (PORTRAIT)
Francis Day, A.N.A.
Owned by Arthur Forest, Esq. |
| 98. | THE CHÂTEAU
Wm. O. Swett, Jr. |



NO. 74. HUDSON RIVER IDYL,
BY GIFFORD BEAL.



NO.
99. NEAR THE SHORE ROAD

ARTIST

Emma Eilers

100. EAST RIVER, N. Y.

George Clowes Everett

CENTRE GALLERY.

NO. 101 TO NO. 127 INCLUSIVE.

NO.	ARTIST
101.	THE LIGHT OF LOVE Francis Day, A.N.A.
102.	GAINSBOROUGH GIRL Walter Russell
103.	RICHMOND CASTLE George H. Bogert, A.N.A.
104.	A BIG CATCH H. L. Hildebrandt
105.	ST. JOHN'S CHAPEL AND PARK, VARICK ST., 1840 E. L. Henry, N.A.
106.	AUTUMN EVENING Frank Russell Green, A.N.A.
107.	THE SUMMER MOON Gustave Wiegand
108.	THE OAKS, EARLY MORNING IN SEPTEMBER William A. Coffin, A.N.A.
109.	MOONRISE, KATWISK Paul King
110.	LOVERS J. G. Brown, N.A.

NO.	ARTIST
111.	ARABIAN NIGHTS W. Granville-Smith
112.	ON THE ROAD G. Glenn Newell
113.	PORTRAIT OF A GIRL Harry W. Coate
114.	BRABANCONNE Gari Melchers, N.A. Owned by Gen'l Rush C. Hawkins
115.	THE PRAYER PLUMES E. Irving Couse, A.N.A.
116.	FORT GEORGE HILL E. Lawson
117.	SPRINGTIME Chas. H. Davis, N.A. Owned by National Academy of Design
118.	UNDER THE WILLOWS Edward Gay, A.N.A.
119.	WINTER SHEPHERD H. R. Poore, A.N.A.
120.	THE BROOK Olive P. Black
121.	A SUMMER CLOUD Joseph H. Boston
122.	A BREEZY DAY Paul Moschcowitz, A.N.A.
123.	EVENING Blendon Campbell

NO.		ARTIST
124.	THE QUARREL	W. Verplanck Birney, A.N.A.
125.	THE TWO MOTHERS	Dora Wheeler Keith, A.N.A.
126.	PORTRAIT OF MISS DOROTHY DOUBLEDAY	A. Brewster Sewell, A.N.A. Owned by Mrs. F. N. Doubleday
127.	SPRING WOODS	C. G. Voorhees

EAST GALLERY.

NO. 128 TO NO. 176 INCLUSIVE.

NO.	ARTIST
128.	THE THOROUGHBRED Walter Douglas
129.	OLD APACHE SCOUT Bert Phillips
130.	PORTRAIT OF "MARK TWAIN" S. J. Woolf
131.	AUTUMN'S ENDING William Rau
132.	A DUTCH HOMESTEAD G. L. Herdle
133.	PETIT DÉJEUNER Matilda Brownell
134.	SUNKEN REEF George Wharton Edwards
135.	PORTRAIT OF A GENTLEMAN Charles Noël Flagg Owned by Francis R. Cooley
136.	THE NAUTILUS Hugh H. Breckenridge
137.	HILLS NEAR MONTCLAIR E. Lawson

- | NO. | ARTIST |
|------|---|
| 138. | PROFESSOR HIRAM CORSON, LL.D.
John H. Niemeyer, A.N.A. |
| 139. | HARBOR HILL FROM "THE CHESTNUTS"
Emma Eilers |
| 140. | IN THE HUDSON RIVER HIGHLANDS
Gifford Beal |
| 141. | OCTOBER SUNLIGHT
Fredk. R. Shaler |
| 142. | NORTHWEST WIND
Chas. H. Woodbury, A.N.A. |
| 143. | THE OPALS
Carle J. Blenner |
| 144. | NOON ON BARNEGAT BAY
Edward Browaski |
| 145. | OPEN-AIR RESTAURANT, BOMBILLA
Walter Pach |
| 146. | THE MUSIC MASTER
M. Petersen |
| 147. | APRIL ON CHIPMUNK POINT
Allen B. Talcott |
| 148. | PORTRAIT OF A BOY
Frank Fowler, N.A. |
| 149. | THE CANAL
Arthur Powell |
| 150. | THE WANING YEAR
Chas. Warren Eaton, A.N.A. |
| 151. | SPRING—MADISON SQUARE
John Sloan |



NO. 153. THE TOILERS.

BY G. GLENN NEWELL.



- | NO. | ARTIST |
|---|--|
| 152. THE TRAGIC ACTOR | John Lambert |
| 153. THE TOILERS | G. Glenn Newell |
| 154. THE GATHERING HOUR | Alex. Fournier |
| 155. THE YELLOW SCARF | Elisabeth R. Finley |
| 156. THE STORY HOUR | I. H. Caliga |
| 157. WHERE THE COAST RANGE MEETS
THE SEA | Lockwood de Forest, N.A. |
| 158. SOUTH BLUFF, MASON'S ISLAND | Silas S. Dustin |
| 159. THE MILL POND, ASHFIELD, MASS. | Henry A. Ferguson, A.N.A. |
| 160. THE PHLOX GARDEN | Hugh H. Breckenridge |
| 161. EVENING ON LONG ISLAND | Charles H. Miller, N.A. |
| 162. NINA, DAUGHTER OF HENRY GOLDEN
DEARTH | J. Campbell Phillips
Owned by Henry Golden Dearth |
| 163. "A PASTORAL"—DECORATIVE PANEL | Louis David Vaillant |
| 164. LINEKIN BAY, ME. | C. J. Taylor |

- | NO. | ARTIST |
|------|---|
| 165. | ON THE BRONX RIVER
Geo. H. Smillie, N.A. |
| 166. | PORTRAIT OF MISS BEATRICE L.
HECHT
Victor D. Hecht |
| 167. | LOW TIDE, BAILEY'S ISLAND, ME.
A. T. Bricher, A.N.A. |
| 168. | SASSAFRAS TREES
Will J. Quinlan |
| 169. | A BIT OF ACOMA, N. M.
Mathias Sandor |
| 170. | LEGEND
Bryson Burroughs, A.N.A. |
| 171. | NEAR SKYRIE
Charles Veinz |
| 172. | PORTRAIT IN COSTUME
S. J. Woolf
Owned by Robert Paton Gibbs, Esq. |
| 173. | SHEEP PASTURES
F. De Haven, A.N.A. |
| 174. | PARK SHADOWS
Charles Austin Needham |
| 175. | "EMMY LOU"
Charles Louis Hinton |
| 176. | ON THE TERRACE
Rosina E. Sherwood, A.N.A. |

WEST GALLERY.

NO. 177 TO NO. 233 INCLUSIVE.

NO.	ARTIST
177. IN THE BEAVERKILL	Arthur Parton, N.A.
178. ALASKAN MOORE	Carl Remquit
179. THE MINIATURE PAINTER	Ella Conde Lamb
180. THE FIRST LIGHT	Eliot Candee Clark
181. SUMMER	F. De Haven, A.N.A.
182. THE THAW	J. C. Magee
183. FROM THE LIDO—SUNSET	Eliot Candee Clark
184. AUTUMN	Josephine Pitkin
185. THE MINE ACCIDENT	William Rau
186. PORTRAIT OF MISS OLIVE DE LUCE	Percival de Luce, A.N.A.
187. A DECEMBER MORNING	W. Merritt Post

NO.		ARTIST
188.	BANKS OF THE BRONX	Orrin S. Parsons
189.	EARLY OCTOBER	Guy C. Wiggins
190.	LANDSCAPE	John Gordon Saxton
191.	LONGSHOREMAN	Frederick W. Freer, A.N.A.
192.	TRAIN YARD, GRAND CENTRAL STATION, N. Y.	Colin Campbell Cooper
193.	AFTERNOON, WESTPORT, CONN.	Joseph H. Boston
194.	SYLVIA	Mathilde de Cordoba
195.	THE BRONX IN SUMMER	Lewis Cohen
196.	CATTLE DRINKING	G. Laurence Nelson
197.	BADENWEILER, GERMANY	Joseph Lyman, A.N.A.
198.	SUNSHINE AND WHITE HOUSES	Helen M. Turner
199.	GRAY DAY, PROVINCETOWN, MASS.	Louise L. Heustis
200.	ROSES	Alice M. Preston
201.	VENICE	E. Wood Perry, N.A.



NO. 297. THE COTILLION.
BY H. M. WALCOTT, A.N.A.



NO.	ARTIST
202.	IN THE ADIRONDACK WOODS M. Seymour Bloodgood
203.	PORTRAIT Mary Theresa Hart Owned by Miss Sloane
204.	OCTOBER LANDSCAPE W. Granville-Smith
205.	THE SUNLIT HILL Carleton Wiggins, N.A.
206.	RUTH Lorenzo James Hatch Owned by Mrs. A. B. Cheney
207.	PORTRAIT OF MRS. COATS Lydia F. Emmet
208.	AN ENGLISH BARNYARD Anna Fisher
209.	THE SHADOW OF QUEBEC Birge Harrison, A.N.A.
210.	STUDY S. J. Woolf
211.	WILLIAM H. POWELL, ESQ. Irving R. Wiles, N.A.
212.	EBB-TIDE, EAST ROCKAWAY, L. I. Chas. A. Burlingame
213.	CURIOSITY Geo. Henry Hall, N.A.
214.	LANDSCAPE Eliot Candee Clark

- | NO. | ARTIST |
|------|---|
| 215. | SCH EVENINGEN WOMAN
Walter Florian |
| 216. | THE GRAY HARBOR
Earl H. Brewster |
| 217. | SOLDIERS' SERVICE IN ST. GILES
CATHEDRAL, EDINBURGH
Sydney Adamson |
| 218. | THE HYDRANGEA BUSH
Robt. Vonnoh, N.A. |
| 219. | AN AUTUMN NIGHT
Lyll Carr |
| 220. | SPANISH CAFÉ
F. Luis Mora, N.A. |
| 221. | OCTOBER RAIN
Chas. Morris Young |
| 222. | CONNECTICUT LAUREL FIELD IN JUNE
A. T. Van Laer, A.N.A.
Owned by Mr. Munson |
| 223. | EVENING, WESTCHESTER
Walter C. Hartson |
| 224. | THE MISTS OF EVENING
Arthur Hoeber |
| 225. | PORTRAIT OF MME. J.
Wm. C. Rice |
| 226. | AUTUMN FIRES
Walter Satterlee, A.N.A. |
| 227. | ON THE CONNECTICUT RIVER
Guy C. Wiggins |



NO. 240. LOWLANDS OF THE DELAWARE.

BY EDWARD W. REDFIELD, N.A.

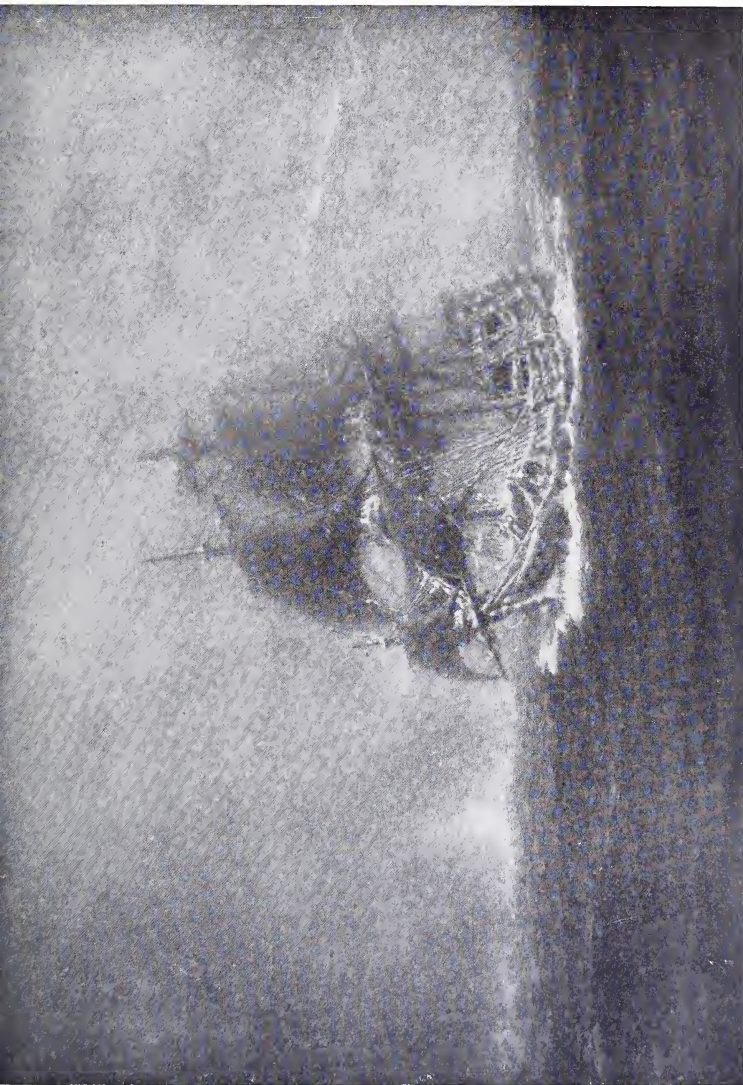


NO.	ARTIST
228. GIRL WITH ROSE	Robert K. Ryland
229. MR. UDO BRACHVOGEL	Walter Florian
230. PORTRAIT OF RICHARD ALDRICH	Matilda Brownell
231. PORTRAIT	Wm. M. J. Rice, A.N.A.
232. EVELYN	Charles Frederick Naegele
233. AT THE WHARF	John C. Vondrous

VANDERBILT GALLERY.

NO. 234 TO NO. 355 INCLUSIVE.

NO.	ARTIST
234.	REFLECTIONS Walter Shirlaw, N.A.
235.	MUSIC IN THE MOONLIGHT Charles Caryl Coleman, A.N.A.
236.	SUMMER SHOWERS Wm. H. Howe, N.A.
237.	SENTINELS Paul Moschcowitz, A.N.A.
238.	PORTRAIT Irving R. Wiles, N.A.
239.	DAWN William Rau
240.	LOWLANDS OF THE DELAWARE Edward W. Redfield, N.A.
241.	OTSEGO HILLS Thomas R. Manley
242.	JUNE William Thorne, A.N.A.
243.	THE MERRY-GO-ROUND C. R. Bacon
244.	AUGUST MORNING Carleton Wiggins, N.A.



NO. 260. THE ANCIENT MARINER,
BY WILLIAM E. NORTON.



NO.	ARTIST
245.	NORWAY MAPLES W. Granville-Smith
246.	IN THE MOUNTAINS OF EAST TEN- NESSEE E. L. Henry, N.A.
247.	LANDSCAPE Otto H. Bacher, A.N.A.
248.	ENGLISH SETTER Wm. J. Hays
249.	AT THE HORSE SHOW Wm. J. Hays
250.	PORTRAIT OF MISS H. Victor D. Hecht
251.	AMERICAN FOXHOUND Wm. J. Hays
252.	TREE GROUP Gustave Cimiotti, Jr.
253.	A SUMMER AFTERNOON Charlotte B. Coman
254.	WHALE SHIPS CRUISING William E. Norton
255.	THE RETURN OF THE REDWINGS Allen B. Talcott
256.	A MEXICAN WELL, CUERNAVACA Thomas Moran, N.A.
257.	NANCY M. H. Bancroft
258.	EAST ROCK, NEW HAVEN John F. Weir, N.A.



- | NO. | ARTIST |
|-------------------------------------|------------------------------|
| 273. A SUN-SHOWER | M. Petersen |
| 274. VIEWING THE CHERRIES, TOKIO | Genjiro Yeto |
| 275. A GIANT SURGE | F. K. M. Rehn, A.N.A. |
| 276. NEW ENGLAND HILLS | I. A. Josephi |
| 277. THE BOUQUET | Marion Powers |
| 278. THE LITTLE JUNE IDYLLE | Childe Hassam |
| 279. NEAR NARAGANSETT, R. I. | Geo. H. Smillie, N.A. |
| 280. PORTRAIT OF MRS. ROBERT HUNTER | Sergeant Kendall, N.A. |
| | Owned by Robert Hunter, Esq. |
| 281. GREY SKIES | Arthur Parton, N.A. |
| 282. SUNRISE AT BYRCLIFFE | Leonard Ochtman, N.A. |
| 283. PASSAIC RIVER, N. J. | L. C. Earle, A.N.A. |
| 284. PORTRAIT OF MR. DAVID BINGHAM | W. T. Smedley, N.A. |
| | Owned by Mr. Bispham |
| 285. HARBOR—NIGHT EFFECT | Fredk. R. Shaler |

NO.	ARTIST
286. THE GULF STREAM	Winslow Homer, N.A.
287. AT DUSK, KATWISK	Paul King
288. "DOROTHY D." (PORTRAIT)	William T. Smedley, N.A.
289. RISING TIDE	Henning Rydén
290. VERMONT HILLSIDES	Fred'k Ballard Williams
291. DUST STORM, FIFTH AVENUE	John Sloan
292. MIRANDA	Louis Loeb, N.A.
293. ON A SEASHORE	C. Myles Collier
294. SAND DUNES	Paul Moschcowitz, A.N.A.
295. A CABBAGE GARDEN	Henry B. Snell, N.A.
296. PORTRAIT OF R. W. GILDER	Cecilia Beaux, N.A.
	Owned by Mrs. R. W. Gilder
297. THE COTILLION	H. M. Walcott, A.N.A.
298. MALINES, BELGIUM	Colin Campbell Cooper
299. REVERIE	Robert David Gauley



NO. 315. NEAR THE QUARRY.
BY MATILDA BROWNE.



NO	ARTIST
300.	STREET OF THE THATCHED ROOFS Florence Francis Snell
301.	WINTER P. Schmauss
302.	THE SEA POOL Joseph Benjamin Davol
303.	THE END OF THE DAY Clara D. Davidson
304.	THE SUNNY STREET Florence Francis Snell
305.	NORTHEAST STORM C. R. Sheeler, Jr.
306.	SPANISH GIRL Robert Henri, N.A.
307.	UP AGAINST IT Walter Douglas
308.	THE SOAP BUBBLES Lucia Fairchild Fuller, A.N.A.
309.	DARK SAIL—GLOUCESTER HARBOR C. R. Sheeler, Jr.
310.	PORTRAIT Alexander Roche, R.S.A. Owned by Ben Foster, N.A.
311.	OLD HOUSES OF MONTREUIL-SUR-MER Everett L. Warner
312.	SERENE SUNSET Bryson Burroughs, A.N.A.
313.	A MOUNTAIN LAKE Abraham L. Kroll

NO.	ARTIST
314.	OLD CHURCH, FRENEUSE R. W. Van Boskerck, A.N.A.
315.	NEAR THE QUARRY Matilda Browne
316.	MISS G. Robert David Gauley
317.	FERRY TO ST. GEORGE, S. I. F. Luis Mora, N.A.
318.	LITTLE MISS M. Louise Cox (Mrs. Kenyon Cox), A.N.A.
319.	A STORMY DAY Olive P. Black
320.	THE QUIET HOME Leonard Ochtman, N.A.
321.	OVERLOOKING SCRANTON Frederick Crane
322.	MOTHER AND CHILD George De Forest Brush, N.A.
323.	MY MOTHER Abraham L. Kroll Owned by Mrs. M. N. Kroll
324.	MISTY NIGHT Ben Foster, N.A.
325.	ON THE COAST Frederick Crane
326.	"STUMPED" H. W. Watrous, N.A.
327.	UNA AND THE LION W. H. Drake, A.N.A.



NO. 318. LITTLE MISS M.
BY LOUISE COX (MRS. KENYON COX), A.N.A.





NO. 242. JUNE.

BY WILLIAM THORNE, A.N.A.



NO.	ARTIST
328.	GIRL IN THE FUR CAPE Robert Henri, N.A.
329.	A STORM COMING William Rau
330.	THROUGH THE FORD Geo. Innes, Jr., N.A.
331.	NOVEMBER M. De Forest Bolmer
332.	THE BALLOON, CREW HEAVING ANCHOR Henry Reuterdahl
333.	LATE AFTERNOON Robert F. Williams
334.	AN OLD ROAD Elliott Daingerfield, N.A.
335.	PORTRAIT OF MR. D. I. M. Gaugengigl, A.N.A.
336.	STREET SCENE Louise Pope
337.	PARK SCENE Louise Pope
338.	MRS. FRESHMUTH Thomas Eakins, N.A.
339.	EARLY MORNING, NAPLES Josephine Pitkin
340.	STREET SCENE, MADRID Mrs. Mabel R. Ward
341.	SUNLIGHT R. M. Shurtleff, N.A.

NO.	ARTIST
342.	PORTRAIT—A. B. W. J. N. Marble
343.	WAITING FOR DAWN Gilbert Gaul, N.A.
344.	ON THE ROAD TO FONTAINEBLEAU— MOONLIGHT Wilhelm Funk
345.	PORTRAIT OF COURTLANDT H. PALMER, ESQ. Albert Herter, A.N.A.
346.	ARRANGEMENT IN BLACK—THE FAN KIMONA Salvatore Anthony Guarino
347.	LAND AND SEA Paul Dougherty, A.N.A. Owned by J. R. Andrews, Esq.
348.	EVENING CALM Benjamin Eggleston
349.	YOUNG WOMAN IN BLACK AND WHITE Will Howe Foote
350.	PORTRAIT OF MRS. S. Chas. C. Curran, N.A. Owned by Mrs. E. M. Scott
351.	STILL LIFE Emil Carlsen, N.A.
352.	THE WATERSPOUT F. De Haven, A.N.A.
353.	THE HARPSICHOED Ed. A. Bell, A. N. A.



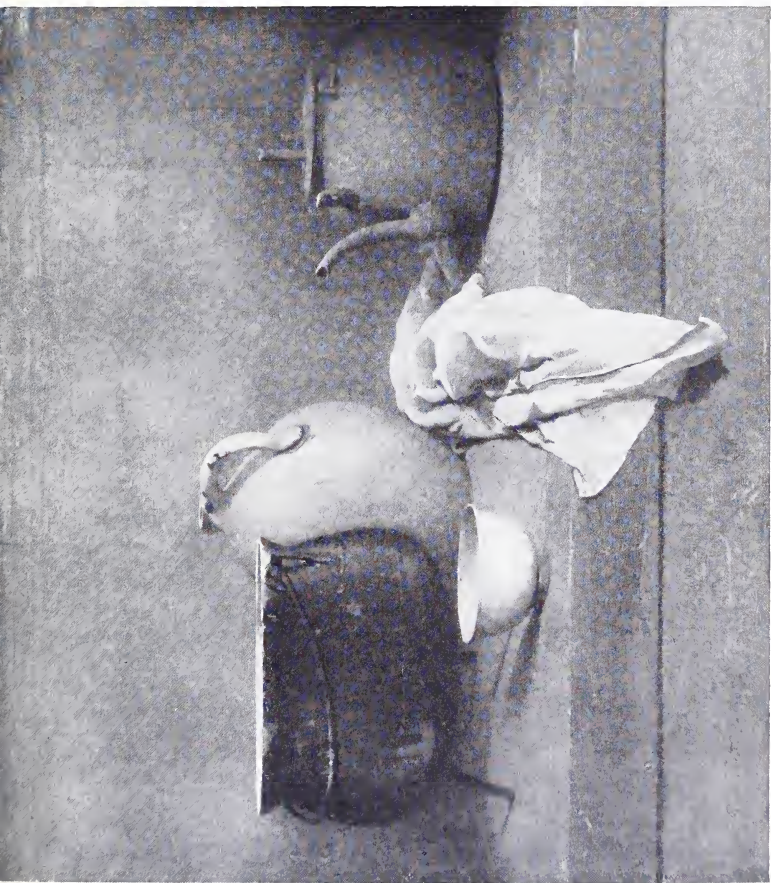
NO. 347. LAND AND SEA.
BY PAUL DOUGHERTY, A.N.A.





NO. 349. YOUNG WOMAN IN BLACK AND WHITE.
BY WILL HOWE FOOTE.





NO. 351. STILL LIFE.
BY EMIL CARLSEN, N. A.





NO. 292. MIRANDA.

BY LOUIS LOEB, N.A.



NO.

ARTIST

354. NOVEMBER FIELDS

Bruce Crane, N.A.

355. COW AND CALF

DeWitt M. Lockman

SCULPTURE.

NO. 356 TO NO. 371 INCLUSIVE.

NO.	ARTIST
356.	BUST OF LEWIS STUYVESANT CHANLER Sergeant Kendall, N.A. Owned by Mrs. Richard Aldrich
357.	PORTRAIT BUST—R. W. GILDER E. O. Rosales Owned by R. W. Gilder
358.	THE COMPETITOR R. Tait McKenzie
359.	MIRANDA J. Scott Hartley, N.A.
360.	“WASHING BABY”—LIONESSE AND CUBS A. Humphreys
361.	CLIMBING POLAR-BEAR Fred’k G. R. Roth, N.A.
362.	EDWIN SWIFT CLYMER Charles Grafty, N.A.
363.	GROUP, MOTHER AND CHILD Caroline Peddle Ball
364.	GWENDOLYN R. Hinton Perry
365.	YOUNG LION WITH ANTELOPE Eli Harvey

Sculpture

59

NO.	ARTIST
366.	THE SUPPLE JUGGLER R. Tait McKenzie
367.	THE KISS Bessie Potter Vonnoh, A.N.A.
368.	TIGER EATING J. Davidson
369.	PUMA Fred'k G. R. Roth, N.A
370.	YOUNG LION WITH RABBIT Eli Harvey
371.	CHRIST AND THE ADULTEROUS WOMAN V. Alfano

NAMES AND ADDRESSES OF ARTISTS

WHOSE WORKS ARE IN THE PRESENT EXHIBITION

- Abbey, Edwin A., N.A., 76.
Adamson, Sydney, 156 Fifth Ave., 217.
Alfano, V., 145 West 55th Street, 371.
Antlers, Max H., 41 Washington Sq. South, 77.
- Bacher, Otto H., A.N.A., Lawrence Park, Bronx-
ville, N. Y., 247.
Bacon, C. R., Ridgefield, Conn., 243.
Ball, Caroline Peddle, Westfield, N. J., 363.
Ballin, Hugo, A.N.A., 146 West 55th Street, 259.
Bancroft, M. H., 145 West 55th Street, 257.
Barse, G. R., Jr., N. A., 7 West 43d Street, 56.
Beal, Gifford, 27 West 67th Street, 74, 140.
Beal, Reynolds, 318 West 57th Street, 65.
Beaux, Cecilia, N.A., 13 East 8th Street, 296.
Bell, Ed. A., A.N.A., 226 West 59th Street, 353.
Birney, W. Verplanck, A.N.A., 58 West 57th Street,
5, 124.
Black, Olive P., 10 Avon Street, Cambridge, Mass.,
24, 120, 319.
Blenner, Carle J., 58 West 57th Street, 143.
Bloodgood, M. Seymour, 1947 Broadway, 202.
Bogert, George H., A.N.A., 381 Fifth Avenue, 21,
103.
Bolmer, M. De Forest, 80 West 40th Street, 331.
Boston, Joseph H., 203 Montague Street, Brooklyn,
121, 193.

- Breckenridge, Hugh H., Fort Washington, Pa., 136,
160.
- Brewster, Earl H., 42 Washington Square, 47, 216.
- Bricher, A. T., A.N.A., 2 West 14th Street, 167.
- Bristol, J. B., N. A., 120 East 23d Street, 1, 265.
- Browaski, Edward, 44 Pine Street, 144.
- Brown, J. G., N. A., 51 West 10th Street, 110.
- Browne, Matilda, Greenwich, Conn., 55, 315.
- Brownell, Matilda, Carnegie Hall, 133, 230.
- Brush, George De Forest, N.A., 322.
- Burlingame, Chas. A., 191 Clinton Street, Brooklyn, 6,
212.
- Burroughs, Bryson, A.N.A., 50 East 86th Street, 170,
312.
- Caliga, I. H., 142 Federal Street, Salem, Mass., 156.
- Campbell, Blendon, 33 West 67th Street, 123.
- Carlson, Emil, N.A., 43 East 59th Street, 351.
- Carr, Lyell, 146 West 55th Street, 219.
- Chapman, Carlton T., A.N.A., 58 West 57th Street,
91, 264.
- Chase, Wm. M., N.A., 303 Fifth Avenue, 72.
- Church, F. S., N.A., Carnegie Hall, 36.
- Cimiotti, Gustave, Jr., 51 West 10th Street, 252.
- Clark, Alson, Watertown, N. Y., 36.
- Clark, Eliot Candee, 939 Eighth Avenue, 180, 183, 214.
- Clark, Freeman, 107 West 64th Street, 14.
- Coate, Harry W., 6 East 17th Street, 113.
- Coffin, William A., A.N.A., Jennerstown, Pa., 108.
- Cohen, Lewis, Carnegie Hall, 195.
- Coleman, Charles Caryl, A.N.A., Players,' 16 Gramercy
Park, 235.
- Collier, C. Myles, Van Dyck Studios, 32, 293.
- Coman, Charlotte B., Vandyke, 939 Eighth Ave., 253.

- Cookman, C. E., 146 West 55th Street, 17.
Cooper, Colin Campbell, 58 West 57th Street, 192, 298.
Cordoba, Mathilde de, Stonington, Conn., 194.
Couse, E. Irving, A.N.A., 58 West 57th Street, 57, 115.
Cox, Louise (Mrs. Kenyon Cox), A.N.A., 75 West 55th Street, 70, 318.
Crane, Bruce, N.A., Box 1692 Gen. P. O., 67, 271, 354.
Crane, Frederick, 33 West 67th Street, 321, 325.
Curran, Chas. C., N.A., 16 West 61st Street, 3, 66, 85, 350.
- Daingerfield, Elliott, N.A., 145 West 55th Street, 334.
Davidson, Clara D., 7 West 42d Street, 303.
Davidson, J., 121 East 23d Street, 368.
Davis, Chas. H., N.A., Mystic, Conn., 117.
Daval, Joseph Benjamin, Ogunquit, Me., 22, 302.
Day, Francis, A.N.A., 27 West 67th Street, 97, 101.
De Forest, Lockwood, N.A., 7 East 10th Street, 157.
DeHaven, F., A.N.A., 23 West 24th Street, 173, 181, 352.
De Luce, Percival, A.N.A., 114 East 23d Street, 186.
Dougherty, Paul, A.N.A., 27 West 67th Street, 347.
Douglas, Walter, 134 West 23d Street, 128, 307.
Drake, W. H., A.N.A., 37 West 22d Street, 35, 327.
Dufner, Edward, 1036 Elmwood Avenue, Buffalo, 272.
Dustin, Silas S., 146 West 23d Street, 158.
- Eakins, Thomas, N.A., 1729 Mt. Vernon Street, Philadelphia, Pa., 338.
Earle, L. C., A.N.A., 9 Union Street, Montclair, N. J., 283.

- Eaton, Chas. Warren, A. N.A., 318 West 57th Street,
78, 150.
- Edwards, George Wharton, 86 Trinity Place, 134.
- Eggleston, Benjamin, 712 Arbuckle Building, Brook-
lyn, 348.
- Eilers, Emma, 751 St. Mark's Avenue, Brooklyn, 13,
99, 139.
- Emmet, Lydia F., New Rochelle, N. Y., 60, 207.
- Everett, George Clowes, 139 Sterling Place, Brooklyn,
100.
- Ferguson, Henry A., A.N.A., 226 West 78th Street, 159.
- Field, E. Loyal, 2 East 33d Street, 75.
- Finley, Elisabeth R., 106 West 55th Street, 155.
- Fisher, Anna, 939 Eighth Avenue, 208.
- Flagg, Chas. Noël, Hartford, Conn., 135.
- Florian, Walter, Sherwood Studios, 215, 229.
- Foote, Mary, Carnegie Hall, 57th Street, 33.
- Foote, Will Howe, 939 Eighth Avenue, 349.
- Foster, Ben, N.A. 253 West 42d Street, 324.
- Fournier, Alex., East Aurora, N. Y., 154.
- Fowler, Frank, N.A. 106 West 55th Street, 148.
- Freer, Frederick W., A.N.A., 224 East Ontario Street,
Chicago, Ill., 191.
- Fromkes, Maurice, 939 Eighth Avenue, 64.
- Fuller, Lucia Fairchild, A.N.A., 78 East 55th Street,
308.
- Funk, Wilhelm, 119 West 42d Street, 9, 344.
- Gaugengigl, I. M., A.N.A., 5 Otis Place, Boston, Mass.,
335.
- Gaul, Gilbert, N.A., 610½ Church Street, Nashville,
Tenn., 343.

- Gauley, Robert David, Van Dyck Studios, 56th Street and 8th Avenue, 41, 299, 316.
- Gay, Edward, A.N.A., Mount Vernon, N. Y., 27, 118.
- Grafly, Charles, N.A., 2200 Arch Street, Philadelphia, Pa., 362.
- Granville-Smith, W., 96 Fifth Avenue, 111, 204, 245.
- Green, Frank Russell, A.N.A., 211 West 85th Street, 106.
- Groll, A. L., A.N.A., Elect, 121 East 23d Street, 37.
- Guarino, Salvatore Anthony, 10 East 14th Street, 346.
- Gue, D. J., 114 East 23d Street, 26.
- Guinness, Mrs., 8 Washington Square, 18.
- Hall, Geo. Henry, N.A., 96 Fifth Avenue, 213.
- Harrison, Birge, A.N.A., Bearsville, N. Y., 209.
- Hart, Mary Theresa, 11 East 14th Street, 203.
- Hartley, J. Scott, N.A., 125 West 55th Street, 359.
- Hartson, Walter C., 71 West 137th Street, 223.
- Harvey, Eli, 80 Washington Square, East, 365, 370.
- Hassam, Childe, N. A. Elect, 27 West 67th Street, 50, 278.
- Hatch, Lorenzo James, Bronxville, N. Y., 206.
- Hays, Wm. J., 145 East 23d Street, 248, 249, 251.
- Hecht, Victor D., 80 West 40th Street, 166, 250.
- Henri, Robert, N. A., 80 West 40th Street, 88, 306, 328.
- Henry, E. L., N.A., 7 West 43d Street, 105, 246.
- Herdle, G. L., 28 State Street, Rochester, N. Y., 132.
- Herter, Albert, A.N.A., 142 East 33d Street, 345.
- Herzog, Lewis, 80 West 40th Street, 69.
- Heustis, Louise L., 53 East 56th Street, 199.
- Hildebrandt, H. L., 27 West 67th Street, 49, 104.
- Hinlon, Charles Louis, 115 Pipe Line Roads, Tuckahoe, N. Y., 175.

- Hoeber, Arthur, 96 Fifth Avenue, 224.
Homer, Winslow, N.A., Scarboro, Me., 84, 286.
Howe, Wm. H., N.A., Bronxville, N. Y., 53, 236
Humphreys, Al., 2137 Crotona Avenue, Bronx, 360.
- Inness, Geo., Jr., N.A., 381 Fifth Avenue, 330.
- Jones, H. Bolton, 33 West 67th Street, 262.
Joseph, I. A., 54 West 39th Street, 276.
- Keith, Dora Wheeler, 33 West 67th Street, 125.
Kendall, Sergeant, N.A., 26 West 8th Street, 268,
280, 356.
King, Paul, 107 East 27th Street, 109, 287.
Kramer, Edward Adam, 1871 Monroe Avenue, Bronx,
61.
Kroll, Abraham L., 312 East 116th Street, 313, 323.
- Lamb, Ella Conde, 360 West 22d Street, 179.
Lambert, John, 324 South 7th Street, Philadelphia,
Pa., 152.
Lathrop, W. L., A.N.A., New Hope, Bucks Co., Pa., 8.
Lawson, Ernest, 450 West 23d Street, 62, 116, 137.
Lockman, DeWitt M., 58 West 57th Street, 355.
Loeb, Louis, N.A., 58 West 57th Street, 292.
Lyman, Joseph, A. N. A., 7 West 43d Street, 197.
- Magee, J. C., 4156 Leidy Avenue, 182
Manley, Thomas R., Montclair, N. J., 241.
Marble, J. N., 58 West 57th Street, 342.
Maynard, Richard F., 33 West 67th Street, 261.
McKenzie, R. Tait, 121 South 18th Street, Phila-
delphia, Pa., 358, 366.
Melchers, Gari, N. A., 80 West 40th Street, 114.
Meyer, Ernest, 124 West 99th Street, 79.

- Miller, Charles H., N.A., "Queen's Court," Queens, L. I., 161.
- Mora, F. Luis, N.A., 142 East 18th Street, 46, 80, 220, 317.
- Moran, Thomas, N. A., 24 West 22d Street, 19, 256.
- Moschcowitz, Paul, A.N.A., 114 East 23d Street, 122, 237, 294.
- Myers, Jerome, 113 East 59th Street, 2.
- Naegele, Charles Frederick, 27 West 67th Street, 232.
- Needham, Charles Austin, 145 East 23d Street, 174.
- Nelson, G. Laurence, 33 West 67th Street, Care of Mr. F. Crane, 196.
- Newell, G. Glenn, 58 West 57th Street, 93, 112, 153.
- Nicoll, J. C., N.A., 51 West 10th Street, 23, 267.
- Niemeyer, John H., A.N.A., Yale Art School, 138.
- Norton, William E., 1931 Broadway, 254, 260.
- Ochtmann, Leonard, N.A., 156 Carnegie Hall, 282, 320.
- Pach, Walter, 1135 Park Avenue, 145.
- Parsons, Orrin S., Lawrence Park, Bronxville, N. Y., 188.
- Parton, Arthur, N.A., 489 Fifth Avenue, 89, 177, 281.
- Perry, E. Wood, N.A., 2 West 16th Street, 201.
- Perry, R. Hinton, 51 West 10th Street, 364.
- Peterson, M., 42 West 60th Street, 146, 273.
- Phillips, Bert, Taos, N. M., 129.
- Phillips, J. Campbell, Carnegie Hall, Studio 1108, 162.
- Pitkin, Josephine, 27 West 67th Street, 184, 339.

- Poore, H. R., A.N.A., 45 Ridge Street, Orange, N. J.,
31, 119.
- Pope, Louise, 74 South Washington Square, 336, 337.
- Post, W. Merritt, 27 West 67th Street, 187.
- Potthast, Edward H., N.A., 318 West 57th Street,
39.
- Powell, Arthur, 53 West 24th Street, 149.
- Powers, Marion, Studio, "The Bartol," Huntington
Avenue, Boston, Mass., 277.
- Prellwitz, Edith Mitchill, A.N.A., 247 West 71st
Street, 16.
- Preston, Alice M., 126 East 12th Street, 200.
- Quinlan, Will J., 229 Woodworth Avenue, Yonkers,
N. Y., 168.
- Rau, William, 1276 Lexington Avenue, 131, 185, 239,
329.
- Redfield, Edward, N.A. W., Centre Bridge, Pa., 58, 240
- Rehn, F. K. M., A.N.A., The Chelsea, West 23d Street,
263, 275.
- Remquit, Carl, 107 Kent Street, Brooklyn, 178.
- Reuterdaahl, Henry, 163 West 23d Street, 332.
- Rice, Wm. C., 122 West 114th Street, 225.
- Rice, Wm. M. J., A.N.A., 231.
- Ritschel, Wm., 400 West 23d Street, 28.
- Robinson, Wm. S., A.N.A., 202 West 74th Street, 52,
95.
- Roche, Alexander, R.S.A., 135 West 47th Street, 310.
- Rook, Edward F., Old Lyme, Conn., 48.
- Rosales, E. O., 13 East 8th Street, 357.
- Roth, Fred'k G. R., N. A., 27 Cottage Place, White
Plains, N. Y., 361, 369
- Russell, Walter, 15 West 67th Street, 102.

- Rydén, Henning, 1947 Broadway, 38, 289
Ryland, Robert K., 50 East 86th Street, 43, 228,
270
- Sandor, Mathias, 107 East 27th Street, 169.
Satterlee, Walter, A.N.A., 96 Fifth Avenue, 226.
Saxton, John Gordon, Old Lyme, Conn., 90, 190.
Schamberg, Morton L., 1626 Chestnut Street, Phila-
delphia, Pa., 269.
Schmauss, P., 123 Fifth Avenue, 301.
Schneider, Arthur, 107 East 27th Street, 81.
Schulman, A. G., 788 Broadway, 63.
Schwartz, Andrew T., 6 East 17th Street, 40.
Sewell, A. Brewster, A.N.A., Oyster Bay, L. I., 51,
92, 126.
Sewell, Robert, V. V., A.N.A., Oyster Bay, L. I., 11,
12, 94.
Shaler, Fred'k. R., 42 S. Washington Square, 141, 285.
Sherwood, Rosina E., A.N.A., 251 Lexington Avenue,
176.
Shirlaw, Walter, N.A., 93 Madison Avenue, 82, 234.
Shuler, C. R., Jr., 1626 Chestnut Street, Philadelphia,
Pa., 305, 309.
Shurtleff, R. M., N.A., 44 West 22d Street, 73, 341.
Sloan, John, 165 West 23d Street, 151, 291.
Smedley, William T., N.A., Bronxville, N.Y., 284, 288.
Smillie, Geo. H., N.A., 156 East 36th Street, 165, 279.
Snell, Florence Francis, 37 West 22d Street, 300, 304.
Snell, Henry B., N.A., 37 West 22d Street, 68, 295.
Sternner, Albert, 10 West 33d Street, 29.
Swett, Wm. O., Jr., 139 West 55th Street, 98.
- Talcott, Allen B., 27 West 67th Street, 147, 255.
Taylor, C. J., 16 Gramercy Park, 164.

Thorne, William, A.N.A., 58 West 57th Street, 25,
242.

Turner, Helen M., 3 Rutherford Place, 198.

Vaillant, Louis David, 152 West 53d Street, 163.

Van Boskerck, Robt. W., A.N.A., 58 West 57th Street,
87, 314.

Van Laer, A. T., A.N.A., 30 East 57th Street, 96,
222.

Vein, Charles, 349 Broadway, 171, 266.

Volkert, E. C., Bronxwood Park, Williamsbridge,
20.

Vondrous, John C., 336 East 74th Street, 233.

Vonnoh, Bessie Potter, A.N.A., 33 West 67th Street, 367

Vonnoh, Robt., N.A., 33 West 67th Street, 218.

Voorhees, C. G., Care of A. P. & S. Co., 71, 127.

Walcott, H. M., A.N.A., Rutherford, N. J., 297.

Ward, Mrs. Mabel R., 298 Summit Avenue, Summit,
N. J., 340.

Warner, Everett L., 400 West 57th Street, 311.

Watrous, H. W., N.A., 58 West 57th Street, 326.

Weir, John F., N.A., New Haven, Conn., 258.

White, Henry C., 1034 Prospect Avenue, Hartford,
Conn., 83.

Whittemore, Wm. J., A.N.A., 318 West 57th Street,
15.

Wiegand, Gustave, 424 West 146th Street, 30, 34,
45, 107.

Wigand, Otto C., 1947 Broadway, 10.

Wiggins, Carleton, N.A., 1151 Broadway, 205, 244.

Wiggins, Guy C., 1151 Broadway, 54, 189, 227.

Wiles, Irving R., N.A., 106 West 55th Street, 211, 238.

Williams, Fred'k Ballard, 152 West 55th Street, 290.

Williams, Robert F., Mariner Harbor, S. I., N.Y., 333.

Winslow, Eleanor C., 308 West 22d Street, 4.

Woodbury, Charles H., A.N.A., 194 Clarendon Street,
Boston, 7, 42, 142.

Woolf, S. J., 139 West 55th Street, 130, 172, 210.

Yates, Cullen, 939 Eighth Avenue, 44, 59.

Yeto, Genjiro, 6 East 17th Street, 274.

Young, Chas. Morris, 1822 Chestnut Street, Phila-
delphia, Pa., 221.

ENDOWMENT FUND.

The Principal of this Fund is held in trust by the United States Trust Company; the income to be used for the maintenance of the Academy.

SUBSCRIBERS.

MRS. C. B. ALEXANDER,	ADOLPH LEWISOHN,
H. O. ARMOUR,	D. O. MILLS,
S. P. AVERY,	LEVI P. MORTON,
S. D. BABCOCK,	MRS. F. A. MOULTON,
CORNELIUS N. BLISS,	MRS. VIRGINIA R. OSBORN
GEORGE S. BOWDOIN,	OSWALD OTTENDORFER,
S. D. COYKENDALL,	HENRY PARRISH,
R. FULTON CUTTING,	JOHN E. PARSONS,
WM. E. DODGE,	STUART F. RANDOLPH,
DAVID EINSTEIN,	HORACE RUSSELL,
WM. T. EVANS,	J. SANFORD SALTUS,
ROBERT GORDON,	JACOB H. SCHIFF,
J. C. HOAGLAND,	JAMES D. SPEYER,
C. P. HUNTINGTON,	B. STERN,
MORRIS K. JESUP,	ISAAC STERN,
MRS. G. E. JONES,	CORNELIUS VANDERBILT,
W. V. LAWRENCE,	L. G. WOODRUFF,
	PETER B. WYCKOFF.

FELLOWS IN PERPETUITY.

Adams, Edward D.	Gray, Samuel S.	Munson, Walstein
Aiken, Charles W.	Griffith, Matilde R.	E.
Bacon, Francis M.	Havemeyer, Wm. F.	Oliphant, R. M.
Barbey, Mrs. Mary L.	Hicks, Benjamin D.	Parrish, Henry
Belden, Sarah R.	Hitchcock, Thomas	Phoenix, Mrs. M. W.
Brown, John Crosby	Hulburt, Margaret	Randolph, H. C. F.
Caldwell, S. B.	H.	Sheldon, Edwin B.
Caldwell, Susan E.	Jesup, Morris K.	Spencer, Lorillard
Cornell, Birdsall	Kernochnan, Mrs.	Stuyvesant, Ruther-
Crane, Mrs. Dr.	Cath. L.	ford
Denny, John T.	Lawrence, Alice	Thorne, Oakleigh
Dows, Margaret E.	Jerome	Ward, Anna M.
Fellows, Mrs. Laura	Learned, Edward	Webb, Mrs. Henriett
A.	Kernochnan	A.
Foote, Julia Jerome	Ludington, C. H.	Wetmore, William
Ford, Henry Wm.	Lummis, Charles A.	Boerum
Gandy, Sheppard	Lummis, William	Wetmore, Mrs. Wil-
Gelston, Miss M. J.	Miller, George N.	liam Boerum
Gerry, Louisa M.	Morgan, Alex. C.	Wiggins, Carleton
	Morton, Levi P.	

This class is now closed.

It is kindly requested that the Secretary be promptly notified of any change of address.

FELLOWS FOR LIFE.

Adams, Union	Chadwick, John	Field, Cortlandt De
Agnew, A. G.	Cheever, J. H.	Peyster
Alexander, J. A.	Chittenden, S. B., Jr.	Finck, Eugene
Allen, Richard H.	Clark, David C.	Forman, Alexander
Alling, James M.	Clark, George C.	Francis, Louis
Amsinck, G.	Clark, Louis C.	Frederickson, C. W.
Andrews, Mrs. B. L.	Clarke, Thomas B.	Fuller, Mrs. Mary E.
Andrews, Wm. L.	Clews, Henry	
Ashley, L. Seymour	Cochrane, J. W.	Gillet, Joseph
Atterbury, B. B.	Coleman, Emerson	Gilman, Theodore
	Condict, J. Elliott	Goodridge, Mrs. Ezra
Babcock, J. C.	Cook, M. R.	R.
Bacon, Sherman J.	Corlies, B. F.	Goodridge, Mrs. J. C.,
Bailey, W. H.	Cox, Kenyon	Jr.
Baker, Geo. F.	Coykendall, S. D.	Goodwin, James J.
Baldwin, Dr. J. G.	Crane, John A.	Gordon, Henry A.
Barger, Samuel F.	Curtis, Wm. H.	Gordon, Robert
Bassett, Dr. John S.		Gordon, Wm.
Belknap, Thomas	Dana, Samuel B.	Gray, Jno. Clinton
Bell, Miss Cath. Berry	Davis, J. C. Bancroft	Gray, J. W.
Benedict, James	Denny, John	Green, Edward H.
Benjamin, John	De Peyster, Elizabeth	Greene, Malcolm C.
Bishop, Cortlandt	V. R.	Gregory, Charles E.
Field	Dodge, C. C.	Gross, Andrew
Bliss, Cornelius N.	Douglas, Wm. P.	
Bliss, Wm. R.	Duncan, Wm. Butler	Haight, Henry J.
Bond, Frank S.	Durfee, Geo. B.	Haliday, E.
Bonner, G. T.	Dwight, F. A.	Hallgarten, Albert
Borden, M. C. D.	Dwight, Mrs. Eliza L.	Hallowell, Col. N. P.
Bridgman, Wm. H.		Halsted, Wm. M.
Brinckerhoff, Mrs. E.	Edsall, Mrs. M. L.	Hamilton, William G.
A.	Egleston, D. S.	Hammond, E. A.
Brodhead, Eugenia	Egleston, Wm. C.	Harbeck, Henry
Brown, Henry T.	Elliott, D. G.	Harriman, Oliver
Brown, Walston H.	Ely, A. K.	Hatch, A. S.
Bruce, Miss Matilda	Eno, Amos F.	Hawkins, Col. Rush C.
W.	Fahnestock, H. C.	Hawley, D. Edwin

Hawley, E. Judson	Lusk, Graham	Parsons, John E.
Hemmings, George W.	Lusk, William C.	Pearsall, Thomas W., Jr.
Henshaw, Mrs. A. N.		
Herrick, Mrs. F. P.	Macy, Francis H., Jr.	Peckham, Walton N.
Hibbard, George B.	Macy, Miss M. Nor-	Penfold, Edmund
Hienenman, Emil	wood	Penfold, Wm. Hall
Higenbotham, Samuel	Macy, Sylvanus J.	Perkins, Rev. Newton
B.	Maitland, Alexander	Phoenix, Lloyd
Higgins, A. Foster	Maitland, Mrs. Mary J.	Pinchot, Edgar
Hinckley, Henry R.	Maitland, Robert L.	Pinchot, Gifford
Holmes, Samuel	McClure, John	Pinchot, J. W.
Howland, Horace	McCosh, Dr. Andrew	Platt, Miss Alethea H.
Howland, John	J.	Potter, Edward T.
Hoyt, William	McGuire, Fred. B.	Potter, James Brown
Huntington, Charles	McKesson, John, Jr.	Prentice, Fred.
R.	McVickar, Wm. H.	
	Merriam, Charles Col-	Rathbone, A. H.
Isham, Miss Flora E.	lins	Rice, Geo. Sam.
Isham, Wm. B.	Merritt, Edward	Robinson, James A.
	Moore, Joseph T.	Robinson, Mrs. John
James, D. Willis	Morgan, J. Pierpont	A.
Jenkins, G. W. A.	Morrell, Daniel	Rogers, Dr. J. H.
Jones, George H.	Morrell, Wm. H.	
Jones, Mrs. Paul	Morrison, George Aus-	Saltus, J. Sanford
	tin	Sargent, Geo. Henry
Kane, Mrs. Grenville	Moulton, Mrs. F. A.	Schermerhorn, H. A.
Kennard, T. W.	Munn, O. D.	Scovill, Thos. L.
Kennedy, H. Van		Sears, Lt.-Col. C. B.,
Rensselaer	Newton, Mrs. Geo.	U. S. A.
Kennedy, John S.	Newton, Wm. Benja-	Shepardson, Ira A.
Kennedy, Rachel L.	min	Simpson, J. B.
Ketchum, Edward B.	Nichol, Mrs. Benjamin	Slade, John M.
Ketchum, Frank M.	Olmstead, Dwight H.	Sloan, Samuel
Ketchum, Landon	Olyphant, Robert	Smith, Charles S.
King, Edward	Olyphant, Talbot	Smith, Clifford E.
	O'Shaughnessy, Mrs.	Smith, G. W. V.
Larned, Wm. Z.	J. F.	Smith, Henry B.
Lathrop, Francis	Park, Mrs. Edith N.	Smith, Isaac T.
Lefferts, Dr. Geo.	Parkin, W.	Smith, James D.
Morewood	Parkin, W. W.	Smith, Mortimer

Smith, S. Newton	Thorne, William	Wellington, Isaac B.
Smith, Wm. Alex.	Thurber, F. B.	Wells, B. S.
Spalding, Thos. H.	Tows, Coe D.	White, Alfred T.
Speiden, William		White, Andrew D.
Spring, Edward A.	Van Vliet, Benson	White, Wm. A.
Stimson, H. C.	Van Wagenen, James	Whitney, Alfred R.
Stokes, Anson Phelps	A.	Wolfe, Mrs. A. B.
Stokes, James B.	Van Winkle, Miss E.	Wright, Louis B.
Stokes, Thomas	Vassar, George, Jr.	Wright, William P.
Streat, James	Vernon, William	
Sturgis, Russell	Von Hoffman, R.	Zabriskie, Andrew C.
Tailer, Edwin N.	Wakeley, Charles C.	
Thompson, F. F.	Walker, Isaac H.	
Thompson, Frederick	Waller, Frank	
Thorne, Samuel		

This class is now closed.



COPYRIGHTED.

CELEBRATED HATS

FOR

Ladies and Gentlemen

AND

THE DUNLAP SILK UMBRELLA

178 and 180 Fifth Avenue, bet. 22d and 23d Streets, and 567
and 569½ Fifth Avenue (Windsor Arcade); 181 Broadway,
near Cortlandt Street, New York; Palmer House,
Chicago; 914 Chestnut Street, Philadelphia.

GOLD MEDAL AWARDED PARIS EXPOSITION, 1889.

Accredited Agencies in all Principal Cities of the World.

H. W. MILLS

A. L. ROSSELL

ARTISTS' PACKING & SHIPPING CO.

Packers and Movers of
Works of Art

139 WEST 54th STREET
NEAR SIXTH AVENUE

Handling for Exhibitions a Specialty
TELEPHONE: 1149 COLUMBUS

LOUIS KATZ ART GALLERIES

308 Columbus Avenue (74th St.)

CHOICE AMERICAN PAINTINGS

Fine Etchings and Engravings.

Frames and Mirrors.

HENRY SCHULTHEIS

55-57 Vesey Street

New York City

MANUFACTURER OF

**Fine Frames and
Shadow Boxes**

FOR OIL PAINTINGS AND
WATER COLORS

DEALER IN

**Paintings
and
Water Colors**

CARPET CLEANSING

By Compressed Air at our works,
By Vacuum Cars at your home.

T. M. STEWART

ESTAB. 1863

326 7th Avenue, Near 28th Street, New York City

TELEPHONE: $\left\{ \begin{array}{l} 633 \\ 631 \end{array} \right\}$ CHELSEA

SOON TO BE AT 48-42 W. 51st STREET

Established 1873

GEO. F. OF

Telephone
2533 Madison Square

PICTURE FRAMES

Oil Paintings Relined and Restored. Works of Art Framed
with Artistic Judgment

FORTY-FOUR YEARS OF PRACTICAL EXPERIENCE

3 East 28th Street, Near Fifth Avenue
(Formerly at 4 Clinton Place)

NEW YORK

TELEPHONE 2085 BRYANT

M. Segall & A. Milch

Dealers in HIGH GRADE PICTURE FRAMES FRAMES AND FURNITURE REGILDED
122 WEST 45TH STREET, NEW YORK

HERBERT M. SMITH FIRE INSURANCE

Telephone 3820 John

95 William Street, N. Y. City

Paintings insured at Exhibitions and in Studios and Private Residences, also between
all places in transit.

Policies procured where in case of loss by fire the amount insured is taken
as the actual cash value at time of fire

Collecting and Forwarding for Exhibitions a Special
PACKERS, REMOVERS AND SHIPPERS OF PAINTINGS,
BRIC-A-BRAC, FURNITURE, ETC., ETC.

STORAGE

W. S. BUDWORTH & SON

424 W. 52d ST.
NEW YORK

Telephone Connection, 120 Columbus
Agents for the National Academy

PICTURES, ETC., RECEIVED, DELIVERED
TO AND RETURNED FROM ALL NEW YORK CITY EXHIBITIONS

ART DEPARTMENT, ADELPHI COLLEGE

THIS Department occupies six of the largest and best appointed art class rooms in Greater New York. Two sessions daily—9 to 12 M., and 1 to 4 P.M. Antique, Still Life, Portrait and Figure. Best male and female models employed and all mediums used. Modelling in Clay and Composition, \$25 for 20 weeks, all day.

SKETCH CLASS.—Tuesday, 7.30 to 9.30 P.M. Terms, \$3 per year. Lessons commence at any time. Normal Art Course for Teachers.

Lafayette Avenue, Clinton and St. James Place, Brooklyn, N. Y.

G. W. SELLECK

Established 1865
Telephone 300 Chelsea

PACKER, MOVER, AND SHIPPER OF

PAINTINGS, ART OBJECTS, FINE FURNITURE, ETC.

208 West 17th Street, New York

Pictures received, delivered to and returned from all N. Y. City Exhibitions. Collecting and forwarding to all Exhibitions. Picture hanging and storage.

WM. H. POWELL Fine Art Gallery

938 SIXTH AVENUE, NEW YORK

Artists' Materials

New York Agent for
LEFEBVRE-FOINET, OF PARIS

Agent for EDOUARD'S & BLOCKX'S Hand-Ground Permanent French Oil Colors, best in the world, French Canvas and Brushes. Mail Orders have prompt attention. Exhibitions of works of American Artists of note.

Rare Pictures and Fine Frames

J. S. BRADLEY, Jr.

BRYANT BUILDING

NASSAU AND LIBERTY STREETS

New York City

as skillfully prepared. pure and delicious. as

Naylor's CANDIES

THE SAME MAKERS ~ THE SAME EXCELLENCE.

Le Mesurier Artists' Colors



Are the same in first shades, and will produce absolutely the same tints as the best English tube paints. We guarantee our colors to possess all desirable features found in domestic or foreign manufactures, and to excel them in many essential qualities, such as impalpable firmness, freedom from lint and other vexatious substances, and positive uniformity of strength and shade.

NOTICE—Our Single Tubes, with few exceptions, are double the size of any foreign now in the market. Price Lists and Pamphlets, giving opinions of some of the most eminent artists, will be furnished on application. Among others who have used them and attest their merits are:
 D. HUNTINGTON, Pres. N.A. J. H. BEARD, N.A. A. T. BRICHER, N.A.
 JULIAN SCOTT, A.N.A. W. L. SONNTAG, N.A. GEO. INNESS, N. A.
 R. W. HUBBARD, N.A. E. WOOD PERRY, N.A.

John W. Masury & Son,

NEW YORK:
P. O. Box 1012

44 to 50 JAY STREET,
BROOKLYN,
N. Y.

Chicago
St. Louis
Minneapolis

WINSOR & NEWTON'S

Prepared Russian Charcoal

COMPRESSED

MADE IN THE FOLLOWING SEVEN DEGREES

- | | | | |
|--------|---|-------|---|
| No. 00 | The softest and darkest shade. | No. 2 | Harder but darker than No. 1. |
| No. 0 | Soft like 00 but of a lighter shade.
(The No. 0 grade is more easily rubbed out than any of the other grades.) | No. 3 | Harder and lighter in shade than No. 2. |
| No. 1 | Not so soft as Nos. 00 and 0 and even lighter in shade than No. 2. | No. 4 | Harder and lighter in shade than No. 3. |
| | | No. 5 | Harder and lighter in shade than No. 4. |

Put up in one dozen sticks to a box

PRICE PER BOX 75 CENTS

Sold by All Art Dealers

WINSOR & NEWTON, Ltd.

LONDON
NEW YORK

F. W. DEVOE & CO.'S

Artists' Tube Colors

"Highly commended by the most eminent American artists, and the standard colors in all the advanced schools of art in the United States."



F. W. Devoe & Co.'s Prepared Canvas for Oil Paintings

F. W. Devoe & Co.'s Varnishes and Mediums

F. W. Devoe & Co.'s Fine Brushes

F. W. Devoe & C. T. Reynolds Co.

MANUFACTURERS

FULTON @ WILLIAM STS.
NEW YORK

167 RANDOLPH STREET
CHICAGO

Catalogue on Application

