

MAIN BOILER (SECOND SERIES)

3 OFF

TEST PRESSURE 360 LBS PER SQ. INCH.

WORKING PRESSURE 180 LBS PER SQ. INCH.

TO PASS LLOYDS SURVEY.

SCALE 1" & 12" = 1 FOOT.

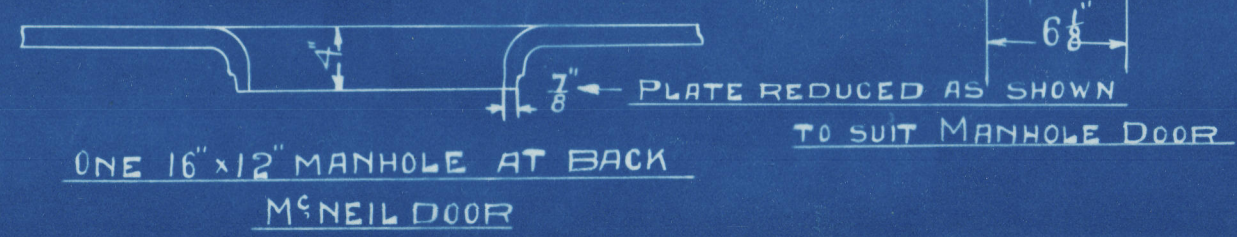
TRACING NO. 7681

SURFACES	ONE BOILER	3 BOILERS
TUBES	2100 #	6300 #
FIREBOX TOP & SIDES	158 "	474 "
" " BACK	82 "	246 "
" " TUBE PLATE	55 "	165 "
FURNACES	161 "	483 "
TOTAL HEATING SURFACE	2556 #	7668 #
GRATE AREA 5-6 BARS	63.3 #	190 #
TUBE AREA	11.65 "	34.95 "
WATER	160 "	480 "
STEAM SPACE	54 #	162 #
GRATE AREA : HEATING SURFACE	1 : 40.4	
" : TUBE	1 : 33.2	
" : WATER	5.43 : 1	
" : STEAM SPACE	1 : 8.1	
1/2 BOILER ABOVE FIREBOX	32.2	
WEIGHT OF WATER	265 TONS	795 TONS

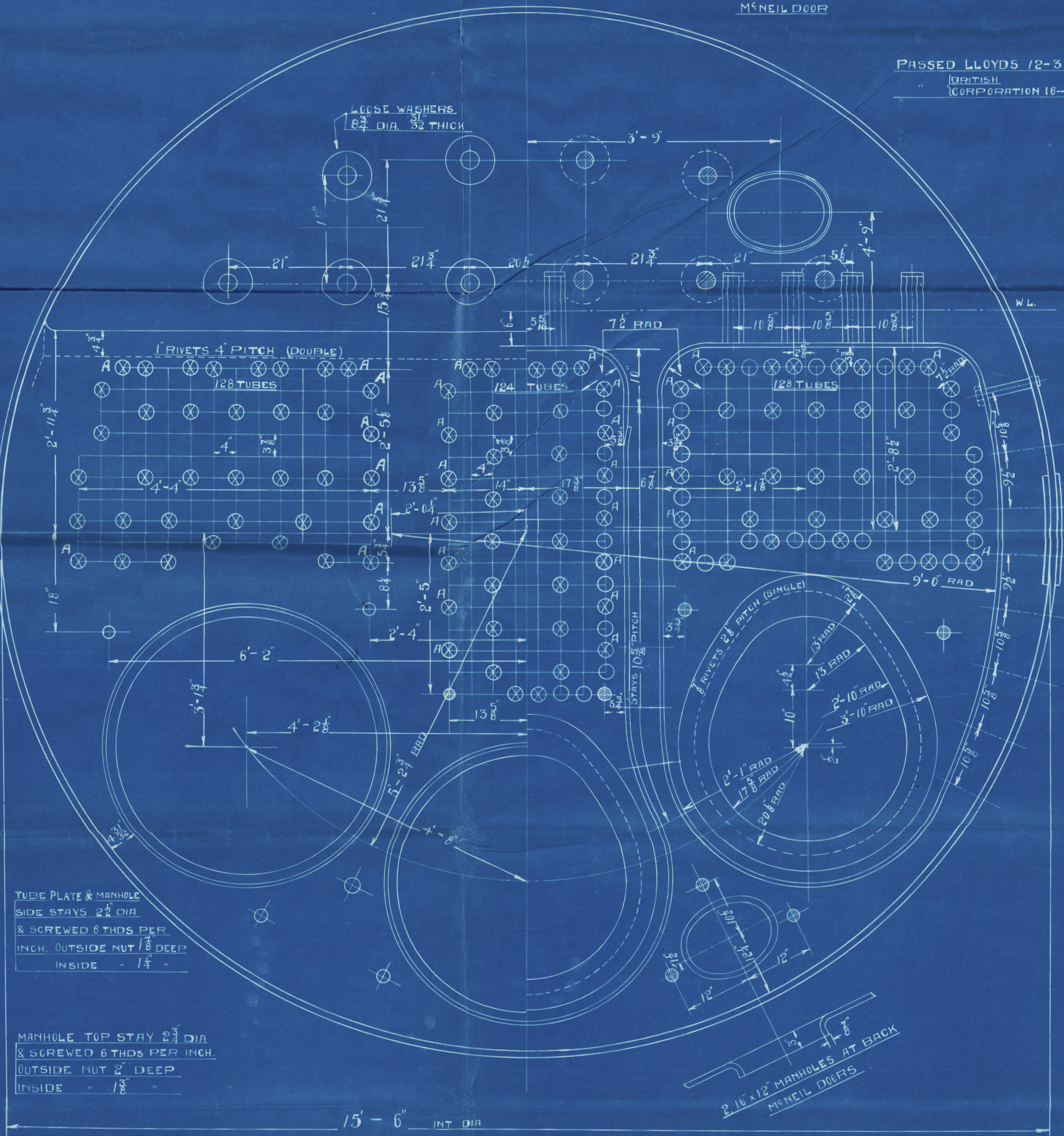
RIVETING			
	LONG	BACK END CIRC	FRONT END CIRC
RIVET HOLE DIA	1 1/8	1 1/8	1 1/8
PITCH	9-12.5	3-5.4	3-1.9
1/4 PLATE	85-6	63	63
1/2 RIVET	88-3	51-9	46-5

LIMITS OF TENSILE STRENGTH & MATERIAL		
SHELL BUTTSTRAPS & GIRDERS	26 TO 32 TONS	SIEMENS MARTIN STEEL
OTHER PLATES	26 - 30 -	
FURNACES	26 - 30 -	
MAIN STAYS	28 - 32 -	
SCREWED STAYS	26 - 30 -	
RIVET BARS	26 - 30 -	

ALL RIVET HOLES DRILLED IN PLACE

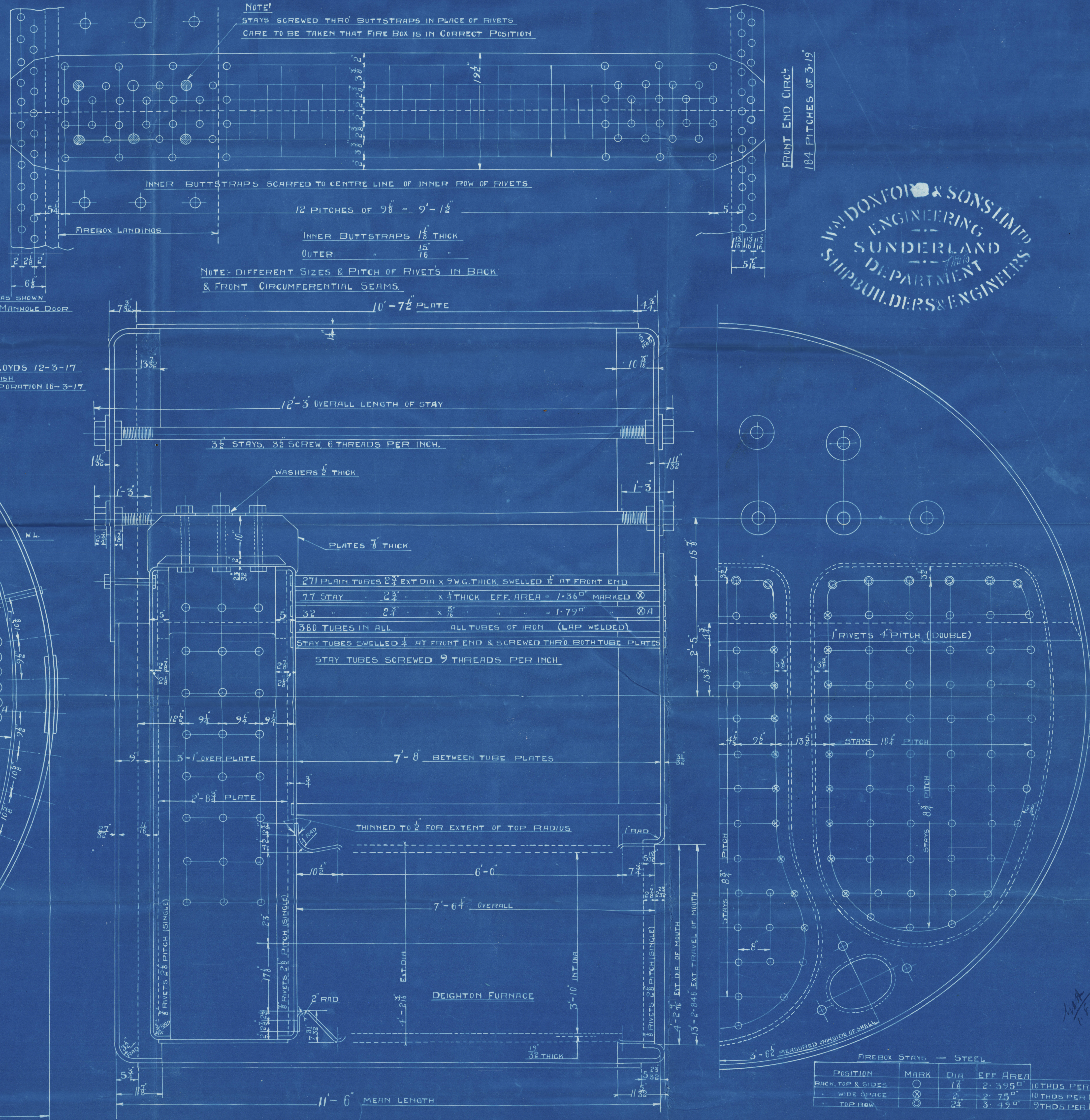
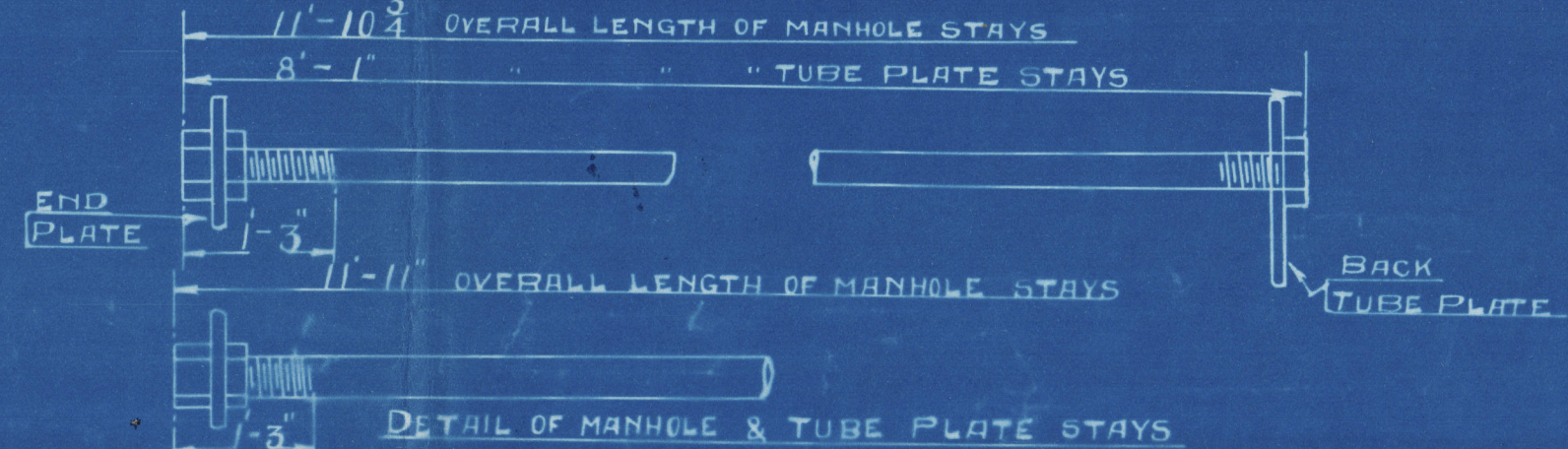


PASSED LLOYDS 12-3-17  
BRITISH LLOYDS CORPORATION 16-3-17



TUBE PLATE & MANHOLE SIDE STAYS 2 1/2 DIA & SCREWED 6 THDS PER INCH. OUTSIDE NUT 1/8 DEEP INSIDE - 1/4 -

MANHOLE TOP STAY 2 1/2 DIA & SCREWED 6 THDS PER INCH. OUTSIDE NUT 1/8 DEEP INSIDE - 1/8 -



FIREBOX STAYS - STEEL				
POSITION	MARK	DIA	EFF. AREA	10 THDS PER INCH
BACK, TOP & SIDES	○	1 1/2	2.3950	10 THDS PER INCH
WIDE SPACE	⊗	2	2.7500	10 THDS PER INCH
TOP ROW	⊙	2 1/2	3.1900	10 THDS PER INCH



Mason Donald Lewis

536

Main Builders ATYM

35E.  
W.P. 180

No. 3616  
LLOYD'S TEST  
360 lbs.  
W.P. 180 lbs  
G.A.H. 10.10.19

Star. +  
Pint - 180

No. 3617  
LLOYD'S TEST  
360 lbs.  
W.P. 180 lbs  
G.A.H. 15.10.19

Centre  
13 1/2

<sup>a</sup> Rokos Vergattis

SUNDERLAND RPT. NO. 27673 1

W115-0038



© 2019

Lloyd's Register  
Foundation