

# NEWS & EVENTS

Rochester Institute of Technology

Vol. 13, No. 31, October 8, 1981

## Annual Homecoming Weekend To Feature Events, Awards

Honoring RIT alumni who have gained distinction in their professional fields will be an important part of Homecoming/Parents Weekend next Friday, Saturday and Sunday, Oct. 16, 17 and 18. Class reunions, sports events and lots of entertainment also are on the program for alumni, parents, students, faculty and staff.

Robert J. Roperti, Printing '66, will receive the Outstanding Alumni Service Award at the President's Recognition Luncheon at 11:30 a.m., Saturday, in the College Alumni Union cafeteria. Members of the Class of 1931 will be especially honored on the 50th anniversary of their commencement at the luncheon.

Each of nine of RIT's colleges will present a Distinguished Alumnus Award to the alumnus who has made a notable contribution to his career field. Ceremonies will begin at 10:30 a.m., Saturday, in Ingle Auditorium. The RIT community is invited to join alumni and parents attending the recognition program.

Receiving awards are: Business, Peter E. Rhodes, Business Administration '64 and MBA '70; Continuing Education, Robert A. Panzer, Business Management '58, Engineering, Alfred N. Gutzmer, Electrical Engineering '61; General Studies, Andrew Thomas, Criminal Justice '74; Graphic Arts and Photography, Arthur Borock, Printing '56; Science, Dr.

# Together 81

Harrison E. Sine, Jr., Chemistry '63; Applied Science & Technology, Stephen D. Sherner, Engineering Technology '73; NTID, Robert J. Green, Art & Design '75 (presentation at 3 p.m., Friday, NTID Theatre). Eisenhower College will name its distinguished alumnus or alumna at the annual Eisenhower Communication Arts Weekend next spring.

Lois S. Sharkey, Food Administration '40, will receive the Sarah Margaret Gillam Memorial Award at another Saturday luncheon in the Hettie L. Shumway Dining Commons.

Induction of four former RIT athletes into the RIT Sports Hall of Fame will follow a reception and buffet dinner at The Party House on Friday evening.

Continued on p. 8



Congratulating Marc Kenward (center), one of 10 Kodak Scholars, is David J. Metz (right), Eastman Kodak vice president. Looking on are President Rose and Mr. and Mrs. Kenward. Kenward is a student in the College of Applied Science and Technology majoring in civil engineering technology. (See story, p. 2)



### EISENHOWER REMEMBERED

Lectures by nationally known historians and writers, a show of silversmith Hans Christensen's work, houseboat cruises, walking tours, and a golf tournament are among the events this weekend during *Eisenhower Remembered*, Oct. 9-11, at Eisenhower College. For further information, call the Office of the Executive Dean, (315) 568-7261, -62 or -63.





*Ascher Temkin on the podium during a recent guest appearance in Czechoslovakia.*

## RIT Philharmonia Tunes Up

You have always wanted to play in an orchestra but couldn't spare the time? Or you have played in one previously and would like to again? Then you are cordially invited to attend the first rehearsal of the RIT Philharmonia, a new community orchestra now being formed on campus.

The RIT Philharmonia is being created as part of the new program in creative arts and complementary learning under the leadership of Dr. William E. Castle, RIT vice president and director of NTID.

Ascher Temkin, recently appointed professor of music and coordinator of music for the College of General Studies, will be the music director and conductor for the Philharmonia. Temkin has conducted major orchestras in Europe, South  
Continued on p. 8

## NEWS & EVENTS

Published weekly on Thursday during the academic year by the Communications Office at Rochester Institute of Technology and distributed free of charge to the Institute community. For information call 475-2750.

## Trip to Far East Produces Faculty Exchange Possibilities

President M. Richard Rose recently returned from a trip to the Far East, where he completed the first stages in the establishment of a faculty exchange program between the Institute and universities in Japan and Taiwan.

Accompanied by John Humphries, professor in the College of General Studies, Rose visited Tokai University in Japan and met with its president, Dr. Shigeyoshi Matsumae. Tokai, a private university of 35,000 students, has 12 campuses in Japan and includes facilities as diverse as an oceanographic research center, a major hospital center and teaching centers in Denmark and Italy. Students and faculty from Tokai University have attended Eisenhower College for several years and RIT officials now look forward to an expanded exchange between additional colleges and faculty of both universities.

A special highlight of Rose's trip to Japan was the reception for 50 RIT alumni and other Institute associates at the Tokai University Club overlooking downtown Tokyo. The reception was attended by representatives of Fuji Trading Co., Minolta Camera Co., Japan Air Lines, Tokai University and by members of the Shigeo Tojo family, who donated the Yasuji Tojo Memorial Garden to RIT.

Following his visit to Japan, Rose delivered the keynote address at the Asian Pacific Conference on Art Education, which was held in Taipei, Taiwan. He had been invited to address the conference by the government of Taiwan, and he and Humphries toured eight colleges while in Taiwan to plan future faculty exchanges.



*President Rose and Dr. Shigeyoshi Matsumae, president of Tokai University, Japan, at the reception for RIT alumni, friends and associates in Japan.*

The first faculty member to participate from Taiwan is Prof. Kuo-Ming Wong, director, industrial engineering, National Tsing Hua University, Hsinchui, Taiwan. Wong is now teaching and conducting research in the College of Engineering. His field of research is in the development of an electrical battery-driven vehicle.

En route back to the United States, Rose and Humphries met with members of the East-West Center in Honolulu and discussed future Institute involvement in the center's activities.

"RIT's diverse programs and emphasis on professional career education make it attractive to foreign universities and faculty members," Rose said. "Our colleges can accommodate the interests of

Continued on p. 8

## Students Named Kodak Scholars

Ten third-year students at RIT are recipients of Kodak Scholar awards. The awards, sponsored by Eastman Kodak Co., are merit scholarships to third-year transfer students. They are made on the basis of a scholastic competition in April. Students selected to participate in the competition have demonstrated high scholastic achievement at their previous colleges.

Among this year's Kodak Scholars are Luanne Burns, Nicholas Ilyadis,

Marc Kenward, Virginia Lewart, and Michael A. Turnick (all of whom are enrolled in the College of Applied Science and Technology); Mary Dausman, Anne Fegadel, and William Gage (College of Business); John Frank (College of Engineering); and Scott Smith (College of Graphic Arts and Photography).

The scholarship winners and their parents were guests at a reception at the home of President and Mrs. M. Richard Rose.



## POLICY & INFORMATION

### Policy Council Agenda for 10/14/81

1) Announcement of the members of the Governance Committee; 2) Presentation of President's report on goals and principles of the Institute; 3) Presentation of report on student housing; 4) Fall 1981 enrollment report—for information; 5) "Thoughts on Optimum Utilization of Summer Quarter" paper—for discussion

### Dean's Meeting 9/29/81

Over the next two months each dean is presenting a briefing session on his/her college. Some information presented at Engineering briefing that probably is not generally known outside the college: 1) Electrical engineering program provides highest amount of laboratory experience of any program in U.S.; 2) A proposal for a micro-electronics program is being developed; 3) Currently conducting a heating test of a Riverknoll apartment using wind generated power; 4) Have collected several years' records of on-campus climatic data—temperature, rainfall, solar incident radiation and wind; 5) Enrollment in new materials science graduate program (with College of Science) is double the estimate; 6) Will host Mini-Baja in 1982, annual meeting of Human Factors Engineers in 1982, annual meeting of the American Society of Engineering Educators in 1983.

### Faculty Council Meeting 10/1/81

1) Approved faculty to serve on tenure committee in NTID, Business, and CCE; 2) Discussed distribution of Faculty Council meeting agendas, minutes and reports; 3) Announced that Dr. Quinn will meet with Faculty Council on 10/29/81; 4) Discussed by-law concerns, primarily definition of faculty, who should be represented, and how representatives are selected; 5) Announced that Faculty Council dues will be collected during October; 6) Approved committee appointments for Off-Campus Student Assoc., Residence Hall and Food Service Board, Traffic Appeals Board and RIT Campus Club; 7) Heard a presentation on benefits, primarily health, insurance and TIAA-CREF

Anyone wishing the source or additional information on any of the above, call 2527.



Sen. Jennings Randolph (left) and Dr. William E. Castle

## Dinnertime For Gourmets

Seniors in the School of Food, Hotel and Tourism Management recently mailed over 500 announcements to the Rochester community, telling past guests that the school's gourmet dinners will begin on Oct. 21.

Scheduled dinner dates and menus are:

Wed., Oct. 21	Captain's Table
Entree:	Seafood-Newburg
Wed., Oct. 28	San Francisco Frolic
Entree:	Filet Mignon and Breast of Chicken
Wed., Nov. 4	The House of Tudor
Entree:	English Mixed Grill
Wed., Nov. 11	Isles of Enchantment
Entree:	Buford Lobster Imperial

Dinners, \$12.50, are served promptly at 6:30 p.m. in the Henry Lomb Room, fourth floor, administration building. Reservations are necessary; phone 2351 for further information. If you would like to be added to the mailing list, contact George Alley, director of the School of Food, Hotel and Tourism Management.

## Senator Receives NTID Citation

Jennings Randolph, U.S. Senator from West Virginia, has received the Distinguished Service Citation from NTID.

"Sen. Randolph richly deserves the citation for his three years of outstanding service as a member of NTID's National Advisory Group (NAG)," said Dr. William E. Castle, vice president of RIT and director of NTID, who recently presented the citation to Randolph at his Senate office in Washington, D.C.

NAG advises the director of NTID in formulating and carrying out policies governing the operation and direction of NTID. NAG consists of professionals concerned with the postsecondary education, technical training, and of general educational needs of the deaf and members of the public familiar with the need for services provided by NTID.

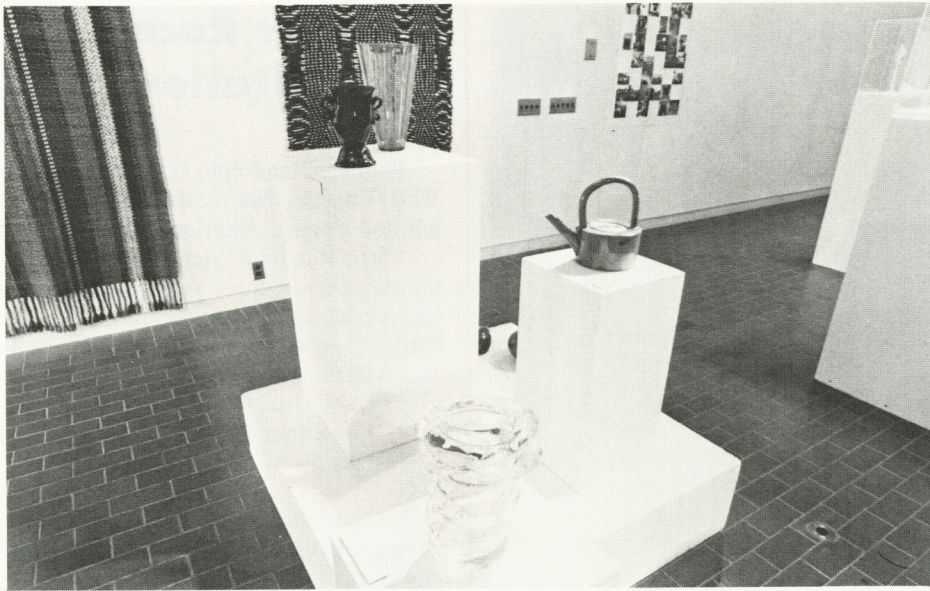
Sen. Randolph, who was elected to his present post in 1958, is a member of the Senate Committee on Labor and Human Resources, chairman of the Sub-committee on the Handicapped, a member of the subcommittees on labor and education, and chairman of the Senate Committee on Environment and Public Work.

He has received the Distinguished Service Award from the President's and the Governor's Committee on Employment of the Handicapped and the President's Award of the National Rehabilitation Association.

### SHAKESPEARE AT NTID

NTID Theatre will present *The Tempest*, by William Shakespeare, on October 16, 17, 23, and 24 at 8 p.m. in the NTID Theatre. A compelling play for all ages, it is a story of young love surrounded by magic, comedy, and mystery. Tickets are \$1 for all students, RIT faculty/staff and senior citizens; \$3 all others. Tickets went on sale Monday, October 5. Call Jeff King in the NTID Box Office at 6254 (TTY) between the hours of 10 a.m. - noon and 1-4 p.m. weekdays.





*"Penland People" will continue in Bevier Gallery through Sunday, Oct. 18, and anyone interested in crafts will find the variety and workmanship in the show exciting.*

## RIT to Host Mini-Baja

The revving of engines and the cheers of racing contestants will resound across the RIT campus this May: the College of Engineering, the defending champion, has received confirmation of its bid to host the 1982 Mini-Baja East competition. The all-terrain vehicle competition will be held on the RIT campus May 13 and 14.

The competition requires engineering students to design and build an all-terrain vehicle, powered by an eight-horse Briggs and Stratton engine. All engineering schools east of the Mississippi are invited. Last year, 29 colleges competed at the Tennessee Technological Institute. RIT won first place in the 1981 competition and second place in 1980.

According to the project coordinator, Dr. Alan Nye, the competition will include acceleration, chain pull, braking land maneuverability, water maneuverability and a 12-mile endurance race.

RIT will again build a car for, in addition to coordinating all aspects of, the competition. Nye says, "We are looking for student volunteers in a number of areas: finance directors, screen printers, art and design majors to design and construct trophies, and numerous volunteers to act as officials during the competition for timing, record keeping and spotting." Those interested should contact Nye at 6663 or the Mechanical Engineering office.

### MATHEMATICS COLLOQUIUM

**Title:** "The Mathematics of Money"  
**Speaker:** Allen Friedman, Sybron Corporation  
**Date:** Wednesday, October 14  
**Place:** Building 08 (Science), Room 2178  
**Time:** Refreshments at 2:45, speech at 3:00 p.m.

## Program to Relate Art and Design

The relationship between art and design will be explored at RIT in a two-day program, "COMMONGROUND: Art and Design," Thursday and Friday, Oct. 15 and 16.

Sponsored jointly by the College of Fine and Applied Arts and the Complementary Education Grant Program, the first of the three events will be "Alvin Lustig Remembered."

A panel discussion of the life and work of the noted designer, who died in 1955, will take place at 3 p.m., Oct. 15, in the television studio of Instructional Media Services (IMS), Wallace Memorial Library. Panel participants are Elaine Lustig Cohen, artist-designer and Lustig's wife and business associate; Arthur Cohen, writer, publisher and collector of early 20th century graphic design works; and Richard DeNatale, widely-known graphic designer who worked with Lustig when Lustig was Visiting Critic in Design at Yale University. DeNatale has a design office in Richfield, Conn. Lawrence W. Belle, director of the Office of Instructional Development, will be moderator.

Elaine Lustig Cohen will talk about her work as it evolved from graphic design to painting in a slide/lecture, "From

Continued on p. 8



*Mohammed Darwish discusses a Jordanian mosaic with RIT Dean, Dr. Robert H. Johnston, during a visit to RIT on Monday, Sept. 28. Darwish is the chief of the Preservation and Restoration section for the Jordanian Dept. of Antiquities. Johnston is widely known for his archaeological work in xeroradiography and his participation in numerous digs, including Bab edh-dhra, Jordan. Since 1956 Darwish has participated in a number of important archaeological excavations in Jericho, Bahrain and Kuwait.*



## Computer Center Hours Extended

To provide additional computing resources over the next academic year, Sigma 9 time sharing and the Ross and Watson User Computer Center hours have been extended. As of Monday, Oct. 5, computer center hours will be: Monday, 8 a.m., through Friday, 7 p.m.; Saturday, 8 a.m. to midnight; Sunday, noon-2 a.m. In other words, both centers will be open 24 hours a day, starting Monday morning at 8 and continuing through Friday evening at 7, and weekend hours also have been increased.

Users running between 2-8 a.m. may notice slow processing periods due to large batch jobs that are allowed to run only during those hours. Also, file back-ups will be run between 3-7 a.m. If a user is running at that time, files that he or she is accessing will not be backed up during that particular run.



*A luncheon at the Liberty Hill home of President and Mrs. M. Richard Rose was the grand finale of a two-day educational trip to Rochester by members of Printing Industries of Metropolitan New York (PIMNY). Together before lunch are (from left) Arthur Borock, president of The Letter Guild of New York City; Walter Campbell, acting director of the School of Printing; Dr. Rose; Dr. Mark F. Guldin, acting dean of the College of Graphic Arts and Photography, and Harry Mallon of Peter F. Mallon, Inc., Long Island City. While in Rochester, members of PIMNY toured Eastman Kodak's Marketing Education Center and Kodak Park as well as RIT's School of Printing.*



*Burt Harris (center), president of People's Cable TV, headquartered in Los Angeles, and Sam Abrams (right) watch as Ted Turner autographs a yachting poster.*

## Turner Talks

With a speech peppered with criticism, humor and a little boasting, Ted Turner entertained more than 500 students, faculty and staff in Webb Auditorium, on Tuesday, Sept. 29. Turner, a millionaire yachtsman, team owner and communications mogul, was in town to help People's Cable TV promote its new acquisition, Turner's own "SuperStation," Ch. 17. Turner also owns Cable Network News (CNN), a project he started five years ago as an alternative to network programming. His visit to RIT was organized by General Studies visiting assistant professor Sam Abrams.

Turner talked briefly about the future of television, but frequently strayed from his topic to blast the three major television networks. "We've let it (television) grow wild, rather than cultivate and manage it and use it as the tremendous resource it is."

Turner, with his two national cable networks, is battling the existing networks for audiences. After losing money since it began, Turner says CNN will break even next year.

Of the networks Turner said, "When you turn our communications resources  
Continued on p. 6



# NEWS & NEWSMAKERS

**Betty Glasenapp**, CCE, has been appointed to the Editorial Board of *Continuum*, the quarterly journal of the National University Continuing Education Association. She was managing editor and editor of *Continuum* while it was published at RIT from 1968 to 1980. She recently returned from an Editorial Board meeting at the University of Oklahoma.

**Nile Root**, associate professor and coordinator of Biomedical Photographic Communications, recently had a one-person show of his work in Finland. The exhibit consisted of 50 color photographs made on a five-day photographic jaunt through Finland in 1979. The images include designs in color of old walls and seaport buildings, architectural details, and scenic views. They were made in various parts of the country including Helsinki, Pori, and Rovaniemi, a small town on the Arctic Circle.

The exhibit was at the Satakunto Museum, the newest and largest museum of art in Finland, in Pori.

**Dr. Julian Yudelson**, associate professor of retailing and marketing, was a featured speaker at the first TriStates Retailing Conference held Sept. 20-23 in Whitehaven, Penn. The conference was sponsored by the New York State Council of Retail Merchants, the Pennsylvania Retail Association, and the

New Jersey Retail Association, and was attended by retailers from the three states. Dr. Yudelson gave an illustrated talk and discussion, "Improving Your Store Layout and Window Display." Representing RIT, he was the only academic representative on the program at the three-day meeting.

**Teresa Miklitsch** has been appointed as a counselor in the Office of Financial Aid. For the past three years she was a financial aid officer for the Consortium of the Niagara Frontier, a joint effort of Niagara University, Canisius College and Daemen College that provides higher education to inmates at the Attica Correctional Facility.

**Marsha Purnell Pickens**, communications coordinator, Eisenhower College, will participate in a panel discussion at the fall meeting of the Central New York College Public Relations Council at Wells College, Oct. 13-14. The panel will discuss "Using Alumni(ae) to Benefit the College."

**Richard L. Harris** has been named director, Office of External Program Development for CCE. He comes to RIT from Grays Harbor College, Aberdeen, Wash., where he has been associate dean for continuing education since 1969. As director of external program development, Harris is responsible for over 100 special courses, non-

credit courses and workshops offered through CCE each year. He holds an Ed.D. from Washington State University.

**Janet Jones** has been elected member-at-large of the New York State Association of Intercollegiate Athletics for Women (NYSIAAW). An instructor in adapted physical education at RIT and women's track coach last year, Jones will serve on the membership and nominating committees of the state organization.

**Thomas Frederick**, Biology Department, attended the meeting of the Electron Microscopy Society of America in Atlanta, Ga. He presented a paper co-authored by Russ Gardner of RIT and two colleagues at the University of Texas Medical School.

RIT was well represented at the 51st Annual International Meeting of the Biological Photographic Association in Toronto in August. A group of 16 faculty, adjunct faculty and students were among the 400 participants at the conference.

**Nile Root**, coordinator of biomedical photographic communications, presented a paper on "Micro Computer Literacy in Biomedical Communications." **Andrew Davidhazy**, associate professor in the School of Photographic Arts and Sciences, gave a paper on "Infrared Investigation of Velasquez Paintings."

---

## Turner

Continued from p. 5

over to reckless, unbridled, irresponsible, free enterprise that just tries to wring as much money out of the system as possible, then you see the stupidest programs, because it's easier to get more attention doing wrong things than it is with right things." His own programming will consist of sports, old movies and what he terms "wholesome shows."

For the future, Turner says there soon will be 100 channel cable carriers that will provide special interest programming for every taste.

Turner also took time to comment on Reaganomics, the baseball strike, nuclear warfare and his days in college.



*There was a time, not very long ago, when RIT wasn't even mentioned on Interstate 390 directional signs. Thanks to RIT's Development Office, however, drivers can now find their way to this otherwise highly visible educational landmark.*



# PROFILE

## Keeping in Touch-With People and Print

"I'm proud of my ability to get acquainted with people," says W. Frederick Craig, associate professor in the School of Printing. Craig contends that no matter where he goes, he finds people he's met before, and he feels everyone should experience this. By asking questions and being inquisitive one can learn a lot about another person.

Craig developed this inquisitive nature during his youth while working with his father on the weekly *Reedy News*, a hand-set newspaper in Reedy, West Virginia, with a circulation of about 600. He spent many hours setting type, gathering information, reporting on events, or, when that became tiring, working in his father's garden.

After high school Craig served in the Navy for a year. Upon his honorable discharge at the end of World War II, he continued working with his father. Two years later he enrolled at West Virginia Institute of Technology, Montgomery, W. Va., where he received his bachelor's degree in printing and publishing. On graduating, he became editor of *The Montgomery Herald*, where he had worked his last semester in college.

Craig worked as a printing plant foreman for Beckley Newspapers Corporation, Beckley, W. Va., and was editor of the *Fayette Tribune*, Oak Hill, W. Va. In 1956 he was asked to return to West Virginia Institute of Technology to teach in the Department of Printing Management. After six years there he came to RIT to teach in the School of Printing and study for his master's in education at the University of Rochester, which was granted him in 1968.

Craig was a major contributor in the establishment of the Newspaper Production Management Program, a four-year program developed to fill the need for highly qualified individuals in this rapidly growing and ever-changing industry. New technology has created a need for trained personnel to manage and coordinate the many facets of the field. Integration of advertising, editorial preparation and production with the use of computers is now the trend in newspaper production.



W. FREDERICK CRAIG

Craig was granted a year's leave of absence from RIT in 1973 by the Gannett Foundation, Inc. to tour newspaper plants in the eastern United States and gather up-to-date information to bring back to RIT in the establishment of the Newspaper Production Management Program. Each plant he visited provided a wide variety of in-plant situations pertinent in developing a newspaper program. They ranged from creating a mailroom system, the building and designing of a plant and circulation procedures and production techniques. From his compilation of information, Craig helped develop the requirements of the curriculum, courses and course content.

Craig still keeps in touch with his hometown. In his spare time he writes articles and has published three books on "the life and times of people in Reedy, W. Va." In his first book he collected news articles published in his father's paper summarizing the previous 50 years in Reedy. He received the support of citizens in Reedy with the donation of photographs and other anecdotes about the town. What makes this accomplishment so unique is that the entire project is a one-man operation. Craig does the

writing, editing, compiling of information, printing and binding of his books.

Craig further delves into the past by collecting historical newspapers. In his possession are some hundred front pages of newspapers with well-known national and international news articles. Several are in metal plate form and hang on the walls of the newspaper production laboratory in the School of Printing.

Craig has a son, Timothy Frederick, 28, employed by Datagraphic Inc., Rochester, and a daughter, Elizabeth "Lissa" Jayne, feature writer for the *Democrat and Chronicle*. His wife Marilyn is a management trainee with Central Trust Banking.

With over 25 years of experience under his belt, 19 at RIT, Craig has a unique philosophy on life: "It's foolish to get tired." Craig quips that this philosophy came from his father in their printing shop. If setting type became tiring, he and his father would rest while weeding their garden. When that became tiring, they would rest while setting more type. Asked what's most important in life, Craig comments, "One should experience life: be inquisitive, ask questions and get to know people."





**Rochester Institute of Technology**

One Lomb Memorial Drive  
Rochester, New York 14623

Institute  
R. I. T.  
COLLECTION  
Publications  
First Class

## Homecoming

Continued from p. 1

They are Charles Bonfiglio, MECH '29, wrestler; Francis J. Beaty, MECH '41, basketball; Donald K. Carlson, PR MGT '74, swimming; and Lynn Fuller, EL '70, track.

Sports events begin at 7:30 a.m., Saturday, with the Homecoming Three-Mile Run on RIT's main track. Alumni, parents, students, faculty and staff are invited to take part. The men's soccer team will play against Nazareth College at 2:30 p.m. The cross country race against Niagara University is expected to finish during half-time of the soccer game.

NTID Theatre will present Shakespeare's *The Tempest* at 8 p.m. both Friday and Saturday evenings. Talisman movies are *Coal Miner's Daughter* and *Taxi Driver*, Friday and Saturday evenings respectively. NTID Rochester alumni and CAB have arranged for a jazz group to play in the Ritskeller.

A variety of dining options will be offered. For those not attending the Sports Hall of Fame dinner, a wine and cheese tasting will begin at 6:30 p.m. Friday in Clark Dining Room. Proceeds will benefit the International Student Scholarship Fund. Food and entertainment with an international flavor will be available from 7 to 9 p.m. Saturday in the College-Alumni Union. The Ritskeller will provide light snacks and beverages from 9 p.m. to 1 a.m., Friday, and an international coffee bar on Saturday from 8:30 p.m. to 1 a.m.

Sign language interpreters will be available for most weekend activities. Tickets for events requiring reservations may be obtained through 4:30 p.m., Friday, Oct. 9, from the alumni office, fourth floor, administration building. Faculty and staff who wish to be hosts are invited to call the alumni office to list times of availability. The registration desk and hospital-ity room will be in the Fireside Lounge, College-Alumni Union.

### LUNCH-HOUR MATINEES: FILM SERIES

- Wed., Oct. 14 "Woody Allen: An American Comedy" (30 min)  
"Scott Joplin" (15 min)
- Wed., Oct. 21 Gardens of San Simeon (Hearst estate) (25 min)
- Wed., Oct. 28 "The Boarded Window" (18 min)  
"The Return" (30 min)  
(Two horror movies)

Films will be shown at no charge in Ingle Auditorium from noon to 1 p.m. The series is sponsored jointly by Staff Training & Development and Instructional Media Services. For additional information, call 6956.

## Art and Design

Continued from p. 4

Design into Painting," at 8 p.m., Oct. 15, in room 02000, administration building.

Arthur Cohen also will use slides to illustrate his commentary on the individuals and the works that have influenced 20th century art, "The Avante Garde in Print," at 10 a.m., Oct. 16, in the Media Production Center television studio.

## Far East

Continued from p. 2

many applied research scientists and teachers, and the interests of our faculty are extremely broad and well suited to exchange programs overseas. We view these exchanges as excellent opportunities for growth for individual faculty members and for the institution as a whole."

## Philharmonia

Continued from p. 2

America, the Caribbean, Mexico and Asia. He is also music director of the internationally known New York Festival and Conductors' Orchestra. A former professional violist and violinist, Temkin has an extensive background and experience in building community orchestras.

The orchestra will be open to all RIT faculty, staff and students and other area college and gifted senior high school and community musicians in the greater Rochester area.

"Even if you have not played in an orchestra or band for awhile, please join us as we work together to build a fine ensemble at RIT," Dr. Castle said.

The first rehearsal will take place on Monday, Oct. 19, from 7:30-10 p.m. in the Fireside Lounge of the College-Alumni Union. Temkin has selected Beethoven's "Symphony No. 1" and "The Italian in Algiers" overture by Rossini for the first rehearsal. Regular rehearsals will continue on Monday evenings.

Temkin began teaching at RIT this fall after a 15-year career as professor of music at the State University of New York at Brockport.

### LOMB LUNCHEONS

- Oct. 13—Barbecued Ribs, Veggies Buffalo Style, Tossed Salad with Dressing, Eclair, or Vegetable Soup, Crab/Cheese Club
- Oct. 15—Curried Rice on Bed of Fluffy Rice, Green Beans, Orange Dessert Square, or Tuna Pockets, Spinach Salad
- Oct. 20—Greek Luncheon: Spanakopita, Greek Dessert with Coconut, or Lentil Soup
- Oct. 22—Yayla Covrashi, Chicken on Cinders, Green Salad, Fruit and Cheese Tray, or Seafood Benedict

The cost is \$2.50. For reservations, call ext. 2351.