

1882-1898 – A. C. KREBS metallic wheel hubs

1896-09-03 - Émile LEVASSOR to A. C. KREBS: "You would kindly give us permission to use your wheel hub system for which, since you say it is very good, it might be worth patenting."



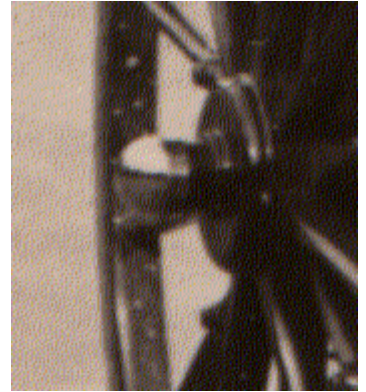
1888 – Krebs steam fire pump



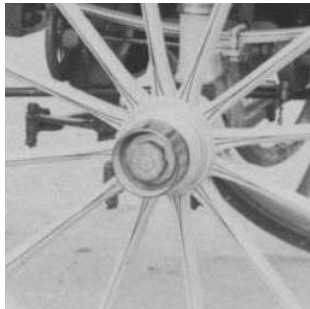
1890 – Krebs hydraulic fan



1899 – Krebs fire electric van



1896 – Krebs system car



1896 – Levassor race car



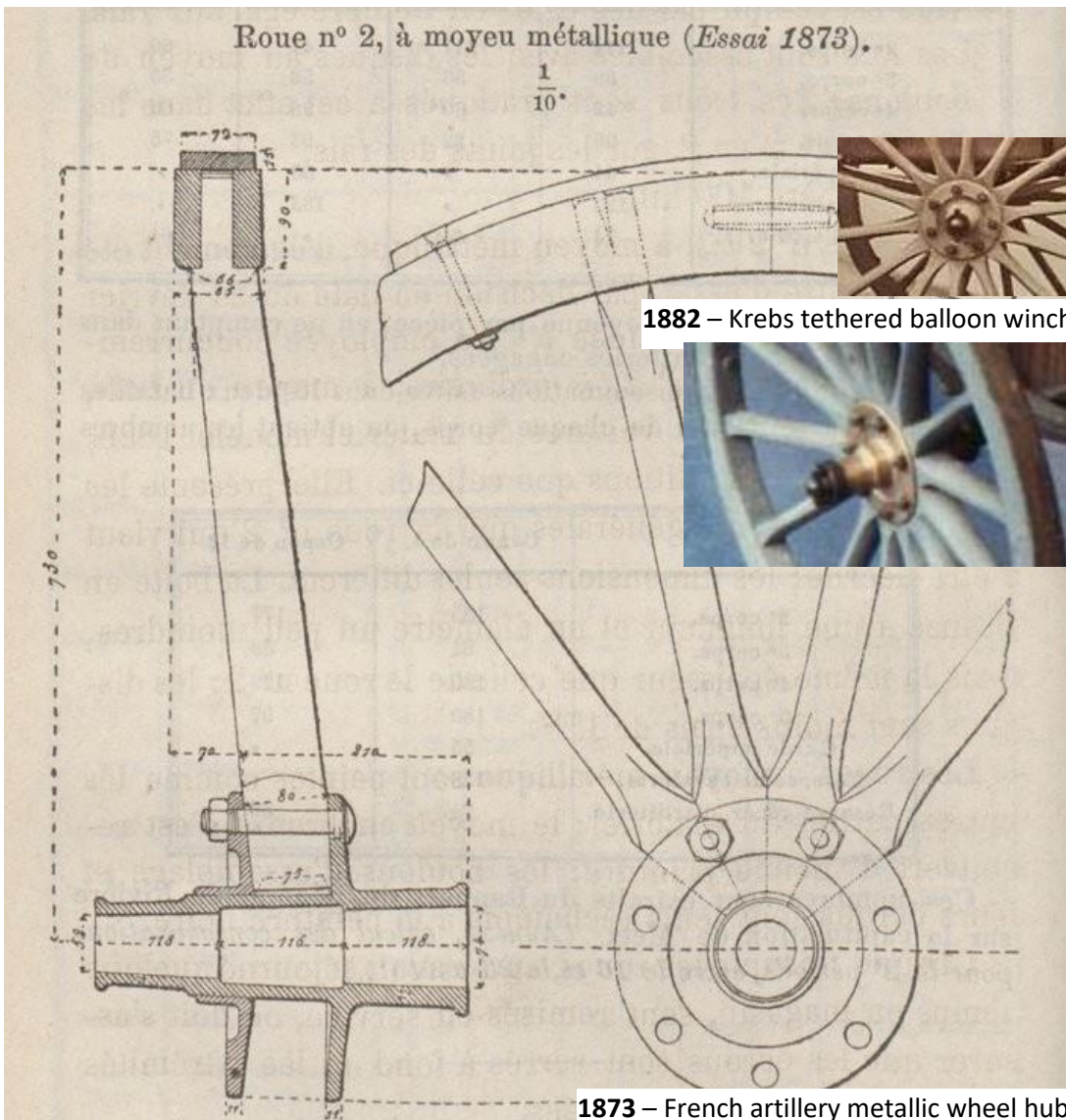
1898 – Krebs Panhard car



1898 – Krebs Panhard race car

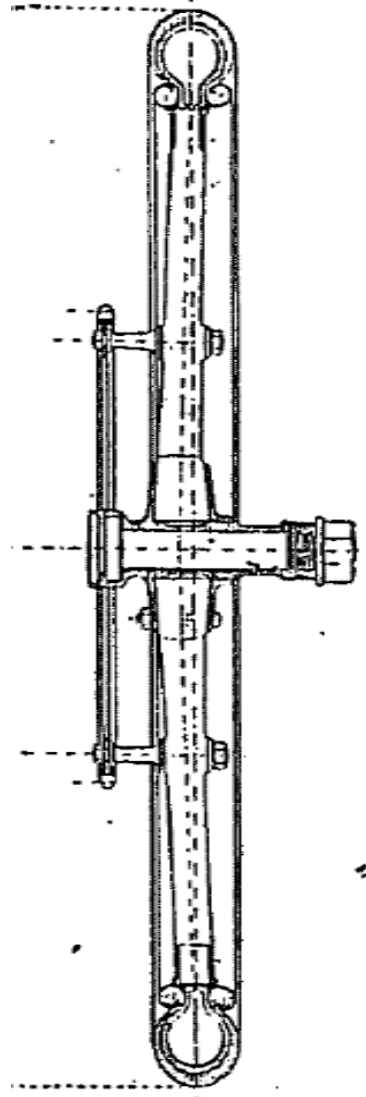


1898 – Krebs Clément-Panhard



1882 – Krebs tethered balloon winch

1873 – French artillery metallic wheel hub



1898 – Krebs Clément-Panhard