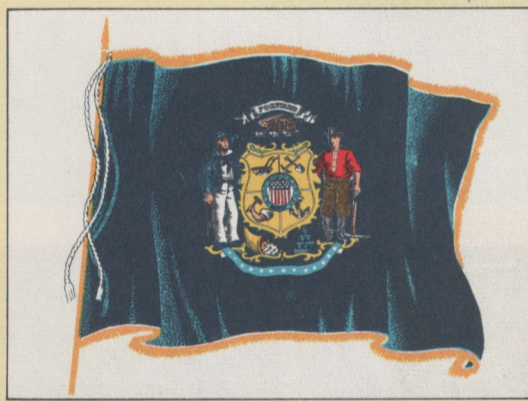


WELCOME TO WISCONSIN

PREVENT FOREST FIRES  
HELP KEEP OUR COUNTRY GREEN  
WISCONSIN CONSERVATION DEPARTMENT



**WISCONSIN VACATIONLAND FOR ALL**  
The Wisconsin Human Rights Statute Sec. 340.75 guarantees full and equal enjoyment of all places of public accommodation or amusement alike to all persons of every race and color.

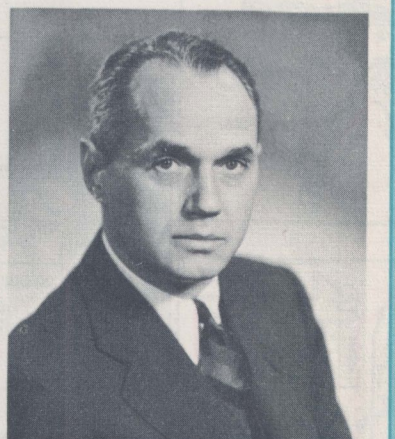
# 1954 WISCONSIN HIGHWAY MAP

OFFICIAL HIGHWAY MAP OF WISCONSIN  
ISSUED 1954

Scale: 1 inch = approximately 14 miles

**CLASSIFICATION OF HIGHWAYS AS TO GROSS WEIGHT OF VEHICLES**  
Pursuant to Section 85.46, Wisconsin Statutes, the state trunk and U. S. numbered highways and connecting streets in Wisconsin shown on this map are designated Class "A" as to limitation of weight of vehicles using such highways, subject, however, to posted seasonal and bridge load restrictions which are or may be imposed pursuant to Section 85.54, Wisconsin Statutes.

- LEGEND**
- As shown on Map
  - As marked on Road
  - U.S. numbered State Trunk Highway
  - Other numbered State Trunk Highway
  - County Trunk Highway—Surfaced
  - County Trunk Highway—Unsurfaced
  - Portland Cement or Bituminous Concrete
  - Bituminous
  - Gravel, Stone
  - Earth
  - Airport
  - Seaplane Base
  - County Seat
  - Community Under 10000
  - City Over 10000
  - Dam
  - Lookout Tower
  - Fish Hatchery
  - Forest Ranger Station
  - National Forest Public Camp and Picnic Grounds
  - State or Federal Institution
  - Wayside
  - Roadside Park
  - County Park
  - State Park, Scenic or Memorial
  - Public Hunting or Fishing Ground
  - Village shown between Towns and Junctions



Wisconsin offers to the traveler and the vacationer a delightfully fascinating blend of the old and the new, enhanced by the ever changing variety of the four seasons.  
Near primeval lakes and forests, one finds thriving towns and a wide choice of excellent tourist accommodations, all connected by fine roads. The beauty of our landscape is matched by the quality of our cities and the hospitality of our people.  
On their behalf, I offer you a most cordial welcome to Wisconsin.  
Sincerely yours,  
*Walter J. Kohler*  
WALTER J. KOHLER  
Governor

PREPARED BY STATE HIGHWAY COMMISSION FOR FREE DISTRIBUTION

WESTERN PRINTING & LITHOGRAPHING CO., RACINE, WIS.

