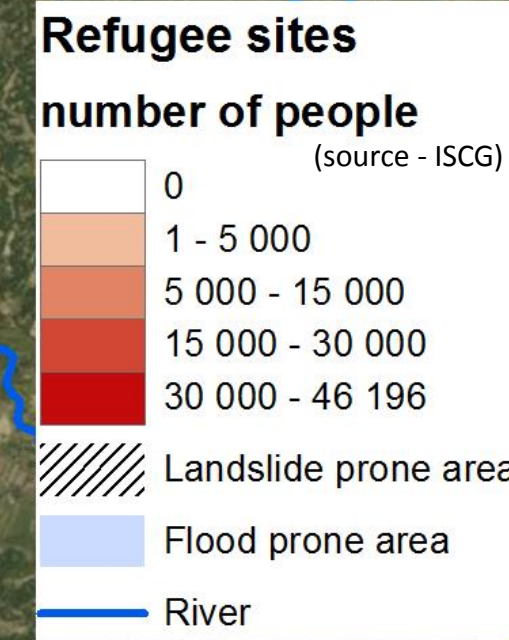
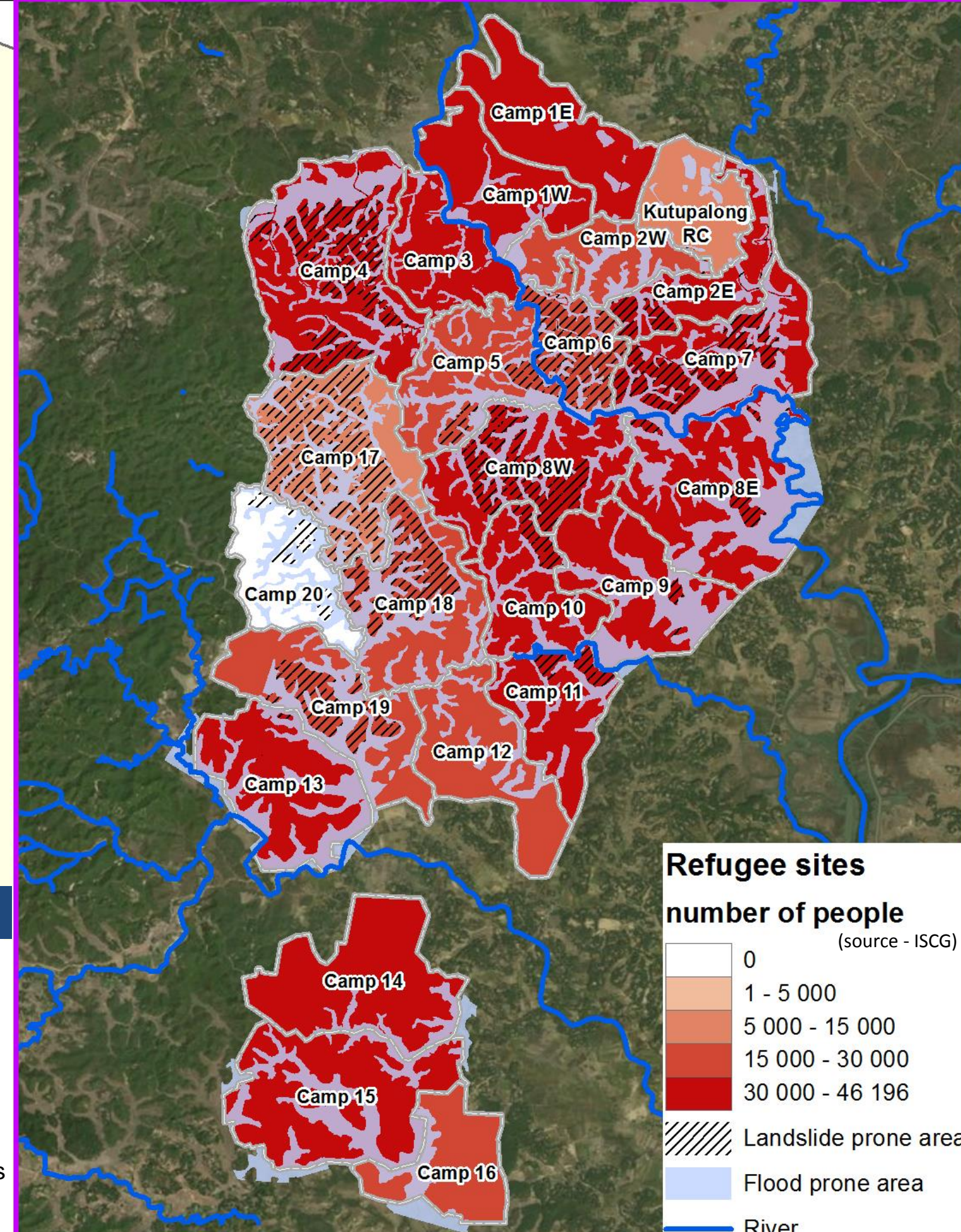


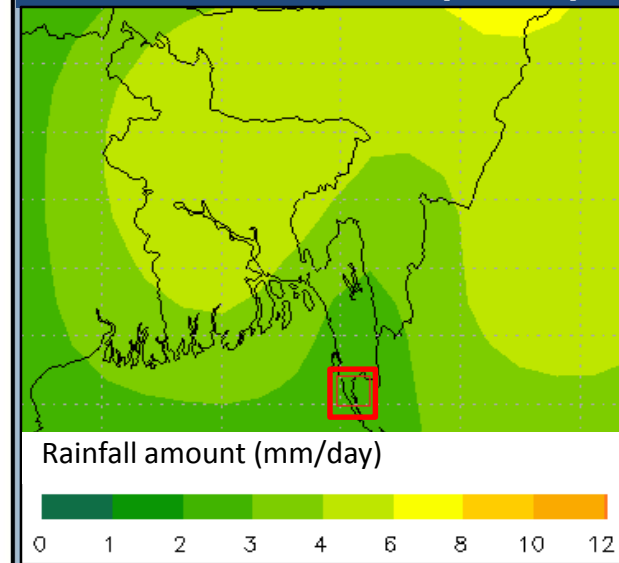
# Bangladesh | Rohingya refugee crisis

## SITUATION OVERVIEW

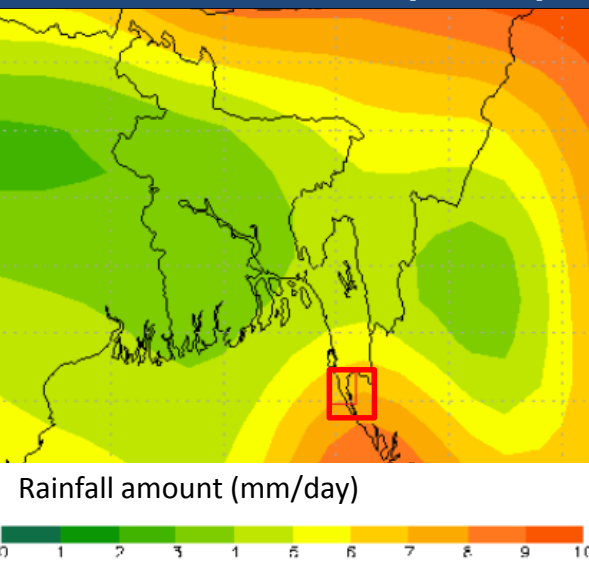
- Close to **900 000 Rohingya refugees** are housed in refugee camps in Cox's Bazar.
- The **monsoon season** starts (officially) on 1 June, but pre-monsoon rains have already started, bringing into focus the acute **vulnerabilities** of the population at risk of floods or landslides.



EXTENDED-RANGE RAINFALL FORECAST  
19 APRIL – 19 MAY 2018 (ECWMF)



LONG-RANGE RAINFALL FORECAST  
MAY – JUNE - JULY 2018 (ECWMF)



REFUGEES SITES  
NUMBER OF PEOPLE (ISCG)



Copyright, European Union, 2018. Map created by ERCC Analytical Team. Sources: Copernicus, ECHO, ECMWF, ESRI, GADM, ISCG, IOM, OSM, UNHCR. The boundaries and names shown on this map do not imply official endorsement or acceptance by the European Union.