

**NINTH ANNUAL  
PHILADELPHIA  
WATER COLOR  
EXHIBITION  
CATALOGUE**



**THE PENNSYLVANIA ACADEMY  
OF THE FINE ARTS MDCCGGXI**



MOST OF THE PICTURES IN THIS EXHIBITION ARE FOR SALE AT STUDIO PRICES. INFORMATION IN REGARD TO SALES MAY BE HAD FROM THE SALESMAN OR FROM ANY ATTENDANT IN THE GALLERIES OR AT THE OFFICE.

DUPLICATE PRINTS OF ETCHINGS CAN, IN MOST CASES, BE SUPPLIED.

The purpose of the Schools of The Pennsylvania Academy of the Fine Arts is the training of professional painters, sculptors and illustrators. The success achieved by the Schools is testified to by the number of artists of great reputation who received their training in them.

The present instructors are: Thomas P. Anshutz, Cecilia Beaux, Hugh H. Breckenridge, Charles Grafly, Henry McCarter, George McClellan, M.D., Frank Miles Day, Joseph T. Pearson, Jr., and Daniel Garber.

Detailed information in regard to the Schools will gladly be furnished to any one interested in the subject. The second term of the present school year begins January 29, 1912, but students may enter at any time.

THE PENNSYLVANIA  
ACADEMY OF THE FINE ARTS  
FOUNDED 1805



THE PHILADELPHIA  
WATER COLOR CLUB

CATALOGUE OF THE NINTH  
ANNUAL PHILADELPHIA WATER  
COLOR EXHIBITION, NOVEM-  
BER 13 TO DECEMBER 17, 1911



PHILADELPHIA  
MCMXI

# MANAGEMENT OF THE PENNSYLVANIA ACADEMY OF THE FINE ARTS

PRESIDENT,

JOHN FREDERICK LEWIS.

VICE-PRESIDENT,

CLEMENT B. NEWBOLD.

HONORARY VICE-PRESIDENT,

E. BURGESS WARREN.

DIRECTORS,

THEOPHILUS P. CHANDLER,  
HERBERT M. HOWE, M.D.,  
GEORGE H. MCFADDEN,  
CLEMENT B. NEWBOLD,  
EDWARD T. STOTESBURY,  
THEODORE N. ELY,

ALFRED C. HARRISON,  
CLARENCE C. ZANTZINGER,  
GEORGE D. WIDENER,  
T. DEWITT CUYLER,  
ARTHUR H. LEA,  
CHARLEMAGNE TOWER,

FRANK H. CAVEN.

TREASURER,

GEORGE H. MCFADDEN.

SECRETARY AND MANAGER,

JOHN E. D. TRASK.

ASSISTANTS,

HARRY P. RHOADS,

JOHN G. DUNLAP.

CURATOR OF SCHOOLS,

CHARLES F. RAMSEY.

SOLICITOR,

JOHN G. JOHNSON.

COMMITTEE ON EXHIBITIONS,

CLEMENT B. NEWBOLD, CHAIRMAN,

GEORGE H. MCFADDEN,

THEODORE N. ELY,

EDWARD T. STOTESBURY,

ALFRED C. HARRISON,

CHARLEMAGNE TOWER.

Officers and Members of the  
Philadelphia Water Color Club  
1911-1912

PRESIDENT,  
CHARLES E. DANA.

VICE-PRESIDENT,  
BLANCHE DILLAYE.

SECRETARY,  
GEORGE WALTER DAWSON.

TREASURER,  
JOHN J. DULL.

EXECUTIVE COMMITTEE,

CHARLES E. DANA,  
BLANCHE DILLAYE,  
GEORGE WALTER DAWSON,  
JOHN J. DULL,

THOMAS P. ANSHUTZ,  
HUGH H. BRECKENRIDGE,  
COLIN CAMPBELL COOPER,  
JESSIE WILLCOX SMITH.

Members

THOMAS P. ANSHUTZ,  
ELENORE PLAISTED ABBOTT,  
ELLEN WETHERALD AHRENS,  
ALEXANDER BOWER,  
SUSAN H. BRADLEY,  
HUGH H. BRECKENRIDGE,  
EDWIN S. CLYMER,  
COLIN CAMPBELL COOPER,  
EMMA LAMPERT COOPER,  
ALICE CUSHMAN,  
CHARLES E. DANA,  
GEORGE WALTER DAWSON,  
BLANCHE DILLAYE,  
JOHN J. DULL,  
ELIZABETH SHIPPEN GREEN ELLIOTT,

\*MAY S. HAYDOCK,  
PAULA B. HIMMELSBACH,  
ELIZABETH H. INGHAM,  
LAURA D. S. LADD,  
JOHN WESLEY LITTLE,  
THORNTON OAKLEY,  
VIOLET OAKLEY,  
AMY OTIS,  
MARGARET REDMOND,  
MARIANNA SLOAN,  
JESSIE WILLCOX SMITH,  
HENRY J. THOURON,  
ELEANOR PALMER WILLIAMS,  
ALBERT PAUL WILLIS,  
LOUISE WOOD WRIGHT.

Honorary Members

\*EDWIN A. ABBEY,  
CECILIA BEAUX,  
FLORENCE ESTE,  
JOHN MCLURE HAMILTON,  
\*DECEASED

ALEXANDER HARRISON,  
JOSEPH PENNELL,  
JOHN S. SARGENT,  
\*MARGARETTE LIPPINCOTT

## Jury of Selection

COLIN CAMPBELL COOPER

HENRY McCARTER

HARRIET SARTAIN

THOMAS P. ANSHUTZ

VIOLET OAKLEY

EVERETT L. WARNER

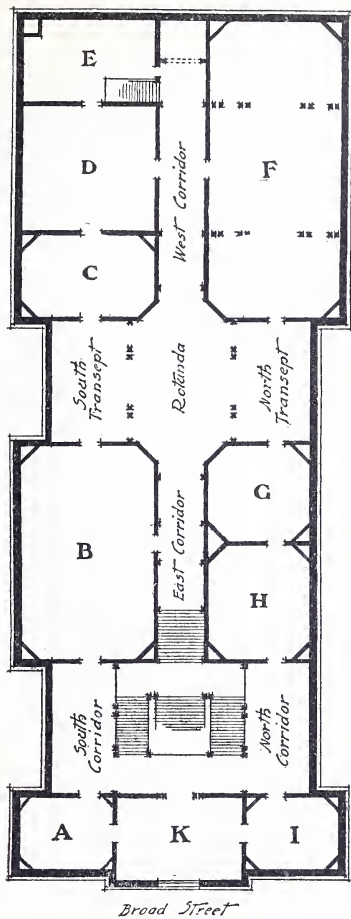
## Hanging Committee

GEORGE WALTER DAWSON

HUGH H. BRECKENRIDGE

VIOLET OAKLEY





PLAN OF THE ACADEMY GALLERIES

## THE BECK PRIZE.



Through the liberality of Mr. Charles W. Beck, Jr., a prize of One Hundred Dollars is awarded this year for the seventh time to the best work in this exhibition, which has been reproduced in color. The award is made by the Jury of Selection. The prize has been previously awarded to Joseph Lindon Smith, Henry McCarter, Elizabeth Shippen Green, Maxfield Parrish, Ernest L. Blumenschein, and N. C. Wyeth.



PORTRAIT. BY THOMAS P. ANSHUTZ.



SNOW TREES. BY GEORGE H. HALLOWELL



BROADWAY FROM THE POST OFFICE. BY COLIN CAMPBELL COOPER





AUTUMN HILLSIDE. BY HUGH H. BRECKENRIDGE.



IN THE HARBOR OF CONCARNEAU. BY F. LE GOUT-GERARD.



THE FIRST SNOW. BY FLORENCE ESTE





MILKMAID: HOLLAND. BY HANS VON BARTELS



ESTUARY OF THE ODET. BY RENE MENARD.



THE CEDAR IN PEMBROKE: BERMUDA. BY TABER SEARS



SUMMER MORNING. BY EDWARD DUFNER



PANDORA. BY WILLIAM M. PAXTON

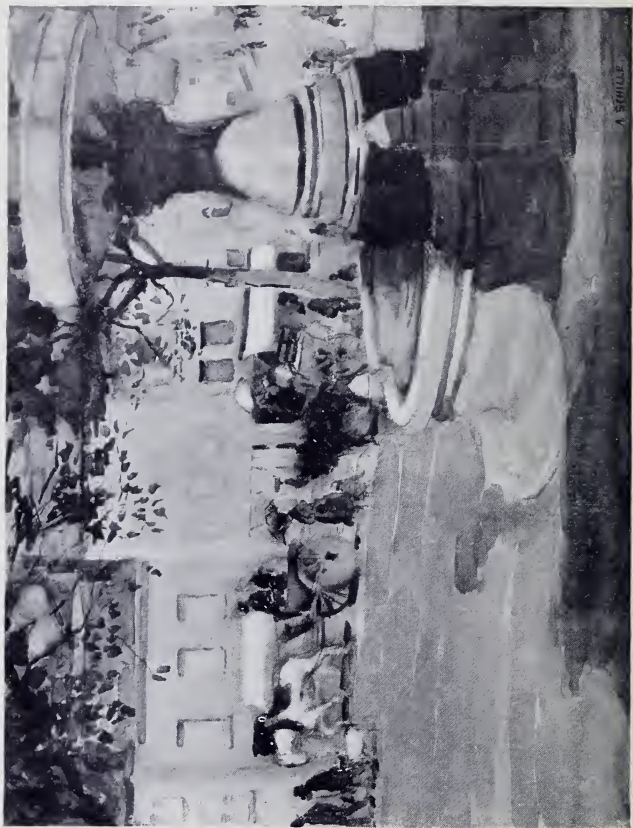




BLUE LAKE. BY CHARLES W. HUDSON



ACROPOLIS FROM PLAREUS, BY PAULA B. HIMMELSBACH



A SCHILLE

SATURDAY MORNING. BY ALICE SCHILLE





THE LITTLE BOSTON GIRL. BY HILDA BELCHER



CHERRY BLOSSOMS. BY LILIAN WESTCOTT HALE

# Catalogue



## GALLERY A.

The Lithographs hung in Galleries A, I, and K were selected for exhibition at The Pennsylvania Academy of the Fine Arts by the Senefelder Club of London, to which organization the Academy makes grateful acknowledgment.

H. TOULOUSE LAUTREC.

- 1 Les Courses.
- 2 Lender Dansant.

CHARLES LÈANDRE.

- 3 Souvenir of Facino Cane.

H. TOULOUSE LAUTREC.

- 4 May Belfort.

W. H. CHARLTON.

- 5 Old Wharf: Moonlight.
- 6 Wharfs.

CHARLES J. WATSON.

- 7 Taankade: Dordrecht.

W. H. CHARLTON.

- 8 The Old Black Swan Inn.
- 9 Mouth of the Tyne and Lord Collingwood Monument.

LITHOGRAPHS.

---

FRANZ HEIN.

10 Lilie.

HELENE LANGE.

11 Pink Roses.

12 Pink Roses.

MAURICE NEUMON.

13 Study of Candlelight

M. BAUER.

14 The Sphinx.

OTTO FISCHER.

15 Meerestrand.

CHARLES LÉANDRE.

16 The Poet's Kiss.

OTTO FISCHER.

17 Meeresbucht.

HELENE LANGE.

18 Chrysanthemums.

MAURICE NEUMON.

19 Study of a Head.

CHARLES LÉANDRE.

20 Le Bon Assureur.

LITHOGRAPHS.

---

OTTO FISCHER.

- 21 Ruine im Rissengebirge.
- 22 Madchenkopf.

HELENE LANGE.

- 23 White Roses.
- 24 Pink Roses.

WILLIAM KNEEN.

- 25 Darning.

OLIVER HALL.

- 26 Study of Free Composition.
- 27 Wensley Dale; Yorkshire.

WILLIAM KNEEN.

- 28 A Window at Westminster School.

OLIVER HALL.

- 29 Barnard Castle; Yorkshire.
- 30 Bridgnorth from the West Side.

WILLIAM KNEEN.

- 31 Lady Seated on Couch.

OLIVER HALL.

- 32 Ludlow Castle.
- 33 Bridgnorth; North Gate.

SIR HUBERT VON HERKOMER.

- 34 German Lithographer.

L. LEGRAND.

35 L'Intrepide.

A. LEGROS.

36 L'orchestra de la Mort.

L. LEGRAND.

37 La Vache a Lait.

38 Sur la Grand Place.

39 Sur la bout du Bane.

40 Portraits.

41 Un Vieux et une Jeune.

42 Hervé.

43 La Fancille.

GEORGE MACCAFFLEY.

44 Grenetto.

SIR HUBERT VON HERKOMER.

45 Portrait of Artist.

THEOPHILE STEINLEN.

46 Miners.

G. SAUTER.

47 The Wetterhorn.

48 The Laucherhorn.

GEORGE MACCAFFLEY.

49 The Fisherman.

LITHOGRAPHS.

---

G. SAUTER.

- 50 Eiger, Monch et Jungfrau.
- 51 The Breithorn.
- 52 Mountains in the Bernese Oberland.

THEOPHILE STEINLEN.

- 53 Misery and Splendour.

G. SAUTER.

- 54 The Schrackhorn.
- 55 Lake of Thun à Niessen.

DANIEL A. WEHRSCHMIDT.

- 56 Alice.

A. LEGROS.

- 57 Mlle. Simpson.

DANIEL A. WEHRSCHMIDT.

- 58 John Silver.

KATHÉ KOLLWITZ.

- 59 The Dying Child.

HARRY BECKER.

- 60 Toppling Peas.
- 61 Building a Bean Sheaf in Holland.

CHARLES STORM VAN'S GRAVESANDE.

- 62 Marée Montante.

HARRY BECKER.

- 63 Hedgers.
- 64 Two Men Gathering Potatoes.

LITHOGRAPHS.

---

CHARLES STORM VAN'S GRAVESANDE.

65 Hamburg.

DANIEL A. WEHRSCHMIDT.

66 The Old Shepherd.

KATHÉ KOLLWITZ.

67 Conspirators.

DANIEL A. WEHRSCHMIDT.

68 The Hedge Cutter.

KATHÉ KOLLWITZ.

69 Death.

ETHEL GABAIN.

70 Waiting for the Tide.

A. LEGROS.

71 Portrait of the Artist.

ETHEL GABAIN.

72 Virgin of the Column.

A. LEGROS.

73 Cardinal Manning.

74 Retour des paysans.

A. BELLEROCHE.

75 Marthe.

76 Sahary Djelli.

77 Madelaine.

78 Portrait.



## GALLERY K.



E. A. HOPE.

- 79 The Wine Taster.
- 80 The Tramp.
- 81 Wayside Musicians.
- 82 Tambour Battant.
- 83 Pan Pipes.
- 84 The Tinker.

JOSEPH PENNELL.

- 85 The Bridge.

A. BELLEROCHE.

- 86 Still Life.

JOSEPH PENNELL.

- 87 The Foundations.

HARRY BECKER.

- 88 Sheep Dipping.

JOSEPH PENNELL.

- 89 The Avenue.

A. S. HARTRICK.

- 90 The Dungeon.

JOSEPH PENNELL.

- 91 The Elevated.

LITHOGRAPHS.

---

HARRY BECKER.

92 Evening.

JOSEPH PENNELL.

93 The Coronation: Westminster.

A. BELLEROCHE.

94 Still Life.

JOSEPH PENNELL.

95 The Castles: Fulton Street.

A. S. HARTRICK.

96 The Hall.

JOSEPH PENNELL.

97 The New Building.

HARRY BECKER.

98 Gathering Potatoes.

JOSEPH PENNELL.

99 Liberty Tower.

ALEX LUNOIS.

100 La Belle Tulipe.

JOSEPH PENNELL.

101 The Precipice: Courtland Street.

HARRY BECKER.

102 End of the Bean Harvest.

JOSEPH PENNELL.

103 The Statue.

LITHOGRAPHS.

---

HARRY BECKER.

104 Cutting a Wayside Hedge.

FRANK BRANGWYN.

105 The Navy, Old and New.

FRANZ HEIN.

106 Das Schwert am Himmel.

FRANK BRANGWYN.

107 Columbus Sighting New World.

108 The Pool: Second Version: Second State.

S. SPENCER PRYSE.

109 St. George.

FRANK BRANGWYN.

110 Homage of the Seas to the Georges.

FRANZ HEIN.

111 Marchen II.

JOHN COPLEY.

112 Pâtisserie.

113 Musicians, 2.

114 In the Bavarian Alps.

115 Carrara.

116 A Lady in the Sunlight.

117 Two Gentlemen Descending to the Stalls.

118 Counsel and a Vendor of Stamps.

119 Musicians, 1.

120 Under the Mountains.

LITHOGRAPHS.

---

KATHÉ KOLLWITZ.

121 Kopf von Arbeiterin.

CARL KAPPSTEIN.

122 Tigerkopf.

ALEX LUNOIS.

123 Les Panaderos.

CARL KAPPSTEIN.

124 In den Capuciner-Catacomben.

125 Teckle (Das schlechte Gewissen).

126 Löwenkopf.

H. TOULOUSE LAUTREC.

127 Le Goulue.

JOHN COPLEY.

128 Interested Spectators.

CHARLES PICKETTS.

129 Design for a Poster.

SAMUEL SPENCER PRYSE.

130 Point-to-Point Races.

SIR HUBERT VON HERKOMER.

131 Dawn.

SAMUEL SPENCER PRYSE.

132 The Workroom.

LITHOGRAPHS.

---

CARRIERÈ.

133 Portrait of Rochefort.

SAMUEL SPENCER PRYSE.

134 They that go up to the Merciful Tower.

135 The Conspirator.

136 Poverty, No. 1.

137 The Kimono.

E. J. SULLIVAN.

138 The Crowning of King George V in  
Westminster Abbey on June 22d.

SAMUEL SPENCER PRYSE.

139 The City of Sleep.

E. J. SULLIVAN.

140 Icarus.

SAMUEL SPENCER PRYSE.

141 The Little Alien.

E. J. SULLIVAN.

142 Awakening of Chaos.

SAMUEL SPENCER PRYSE.

143 Bedelia.

E. MANET.

144 Le Gamin.

145 Guerre Civile.

## GALLERY I.



FANTIN-LATOURE.

146 Duo des Troyens.

FELICIEN ROPS.

147 L'Homme a la Bomb.

148 Le Marchand de Sable.

ETHEL GABAIN.

149 Printing Press.

FELICIEN ROPS.

150 Vieille Garde.

ETHEL GABAIN.

151 Nude.

THOMAS R. WAY.

152 Twilight in the Old Harbour.

CARL KAPPSTEIN.

153 Orang-Utan.

HARRY BECKER.

154 Summer Showers.

FRANZ HEIN.

155 Marchen I.

156 Der Reiter.

CARLOS GRETHE.

157 Fischerboote auf See.

LITHOGRAPHS.

---

A. BELLEROCHE.

158 Portrait Study.

ALEX LUNOIS.

159 Cimitiere.

CHARLES SHANNON.

160 The Sower and the Reaper.

161 The Child.

162 The Bathers.

163 Portrait of the Artist.

164 The Swimmer.

165 An Idyll.

166 The Wayfarers.

167 The Rising Tide.

168 The Bath.

169 The Modeller.

F. ERNEST JACKSON.

170 The Velvet Dress.

171 Portrait of A. F. Peterson, K. C.

172 La Polonaise.

173 Godfrey Evans.

174 Effet de Lumiere.

175 The Pique Dress.

J. KERR-LAWSON.

176 Chelsea Dustman.

177 Portrait of Wm. De Morgan, Esq.

178 Randazzo.

179 Il Ponte.

180 L'Obelisco.

LITHOGRAPHS.

---

CARRIERÈ.

181 Mlle. Carrierè.

CARLOS GRETHE.

182 Lots Versetzen.

CARRIERÈ.

183 A. Rodin.

CARLOS GRETHE.

184 Im Hafen, II.

CARRIERÈ.

185 Le Baiser.

CARLOS GRETHE.

186 Boiges Wetter.

J. KERR-LAWSON.

187 Il Colleone.

188 San Geronimo.

CHARLES J. WATSON.

189 A Leaf from My Sketch Book.

J. KERR-LAWSON.

190 San Giorgio.

191 Portrait of Joseph Pennell, Esq.

J. MCNEILL WHISTLER.

192 Conversation under the Statue.

193 The Tyresmith.

194 The Smith, Passage du Dragon.



LITHOGRAPHS.

---

THOMAS R. WAY.

195 The Sailmaker's Loft.

J. MCNEILL WHISTLER.

196 The Winged Bat.

197 The Canal (Vitre).

A. S. HARTRICK.

198 Portrait.

199 The Rat Catcher.

200 The Old Seamstress.

201 The Warden's Port.

JOHN MCLURE HAMILTON.

202 Portrait of Mr. Gladstone.

203 Sketch.

204 Sketch.

205 Sketch.

206 Portrait of King George V.

207 Tomb in Bath Abbey.

208 Sketch.

209 Sketch.

210 Portrait.

A. S. HARTRICK.

211 The Ex-publican.

212 The College.

213 The Etcher (Joseph Pennell).

214 The Crucifixion.

THOMAS R. WAY.

215 Westminster Abbey.

216 Seagulls at Charing Cross.

217 St. Paul's.

LITHOGRAPHS.

---

J. MCNEILL WHISTLER.

218 Early Morning (2nd state).

THOMAS R. WAY.

219 The Power House : Chelsea.

220 The Lower Pool : Thames.

FANTIN-LATOURE.

221 Manfred.

CARL KAPPSTEIN.

222 Schneppenjager.

FANTIN-LATOURE.

223 Reverie.

224 Prelude de Lohengrin.

FRANK BRANGWYN.

225 The Pool : First Version, Only state.

226 Labour : Second State, Black and Grey.

KARL KAPPSTEIN.

227 Temple in Cjirgenti: Sicilie.

SIR HUBERT VON HERKOMER.

228 Death Mask.

A. LEGROS.

229 Longfellow.

CHARLES STORM VAN'S GRAVESANDE.

230 Crepuscule a Venise.

## NORTH CORRIDOR.



JESSIE WILLCOX SMITH.

231 Little Drops of Water : Little Grains of Sand.

LAWRENCE B. SAINT.

232 Beulah Land.

JESSIE WILLCOX SMITH.

233 The Dogs Delight to Bark and Bite.

234 Illustration for Seven Times One.

SIR FRANK SHORT.

235 The Street Whitestable.

ERNEST L. BLUMENSCHNEIN.

236 In a New York Police Court.

SIR FRANK SHORT.

237 A Yorkshire Dell.

ARTHUR I. KELLER.

238 The Lawn Party.

239 Persuasion.

JESSIE WILLCOX SMITH.

240 A Child's Grace.

241 How Doth the Little Busy Bee.

*WATER COLORS, ILLUSTRATIONS, ETC.*

---

HENRY McCARTER.

242 The Three Hills.

TIMOTHY COLE.

243 The Mother : After Carrierè.

MARY ROLFE.

244 Willows.

ARTHUR I. KELLER.

245 The Eternal Question.

SIR FRANK SHORT.

246 Mont Righi at Dawn.

GEORGE SENSENEY.

247 A Devout Woman.

CHARLES B. KING.

248 Evening : Longprè.

PAULA B. HIMMELSBACH.

249 Parthenon.

H. DEVITT WELSH.

250 Immigrant I.

PAULA B. HIMMELSBACH.

251 Acropolis: From Piræus.

GRACE CORNELL.

252 The River.

*WATER COLORS, ILLUSTRATIONS, ETC.*

---

PAULA B. HIMMELSBACH.

253 Porch of the Erectheum.

GRACE CORNELL.

254 A Sunny Roadside.

255 The Sunny Street.

256 The Shipyard.

F. WALTER TAYLOR.

257 Fête de Nuit.

CHARLES B. KING.

258 The Salute: Venice.

F. WALTER TAYLOR.

259 The Colonnades.

260 The Recitation.

261 The Basin of Saturn.

CHARLES B. KING.

262 The Old Mill: Dixmude.

GRACE CORNELL.

263 Venice.

264 The Appian Way.

LILIAN WESTCOTT HALE.

265 Dogwood.

GRACE CORNELL.

266 Sea and Rocks.

*WATER COLORS, ILLUSTRATIONS, ETC.*

---

LILIAN WESTCOTT HALE.

267 Cherry Blossoms.

GRACE CORNELL.

268 The Bridge.

GEORGE SENSENEY.

269 The Chapel at Montarlot.

CHARLES B. KING.

270 Amsterdam.

H. DEVITT WELSH.

271 Memories.

272 Yea Though I Walk Through the Valley of  
the Shadow.

JOHN M. SWAN.

273 Leopard Gnawing Food.

274 Tiger at Rest.

GEORGE HARDING.

275 The Wreck.

HENRY REUTERDAHL.

276 The Viking.

ELIZABETH SHIPPEN GREEN ELLIOTT.

277 Illustration: The Wings.

278 Illustration: The Wings.

279 Illustration: The Wings.

280 Illustration: The Wings.

*WATER COLORS, ILLUSTRATIONS, ETC.*

---

JOHN M. SWAN.

281 Puma About to Spring.

GEORGE HARDING.

282 The Looters.

HENRY REUTERDAHL.

283 The Fleet in the Caribbean.

THORNTON OAKLEY.

284 Canton : New Year's Day.

GEORGE HARDING.

285 The Fight.

In Galleries G and H are hung the Tenth Annual Exhibition of the Pennsylvania Society of Miniature Painters and the Loan Collection of Miniatures, of which a separate catalogue has been published.



## NORTH TRANSEPT.



ELIZABETH HOWELL INGHAM.

301 What the Mirror Says.

M. M. STRAUS.

302 Prague : Austria.

ELIZABETH HOWELL INGHAM.

303 A Felt Hat.

N. T. OSGOOD.

304 Vintagers.

ELIZABETH F. BONSALL.

305 Just Arrived.

M. M. STRAUS.

306 Bergen : Norway.

JOHN MCLURE HAMILTON.

307 Pastel Drawing : Sketch.

Lent by W. B. Johnson, Esq.

308 Pastel Sketch : Portrait.

309 Portrait of Count Leo Tolstoy.

VIOLET OAKLEY.

310 The Child and Tradition.

JOHN McLURE HAMILTON.

311 Pastel Drawing: Sketch.

312 Pastel Drawing: A Sketch.

GEORGE KOCH.

313 Twilight.

C. VAN H. BEAN.

314 Profile of a Lady.

WILLIAM M. PAXTON.

315 Profile.

ELMER LIVINGSTON MACRAE.

316 A Daughter of Vikings.

GEORGE KOCH.

317 Early Autumn.

C. VAN H. BEAN.

318 Portrait of Little Girl.

VIOLET OAKLEY.

319 The Child and Tradition.

320 The Man and Science.

MAY S. HAYDOCK.

- 321 Currants.
- 322 Wood Lilies.
- 323 Decorative Study : Pansies.
- 324 Decorative Study : Virginia Creeper.
- 325 Wild Carrot.
- 326 Bride Roses.
- 327 Shumac.
- 328 Decorative Study : Rose Pips.
- 329 Pansies.
- 330 Decorative Study : Mullen.
- 331 Chrysanthemum.

CHILDE HASSAM.

- 332 Pont Neuf.

FRANK E. SCHOONOVER.

- 333 Frozen Lake.

CHILDE HASSAM.

- 334 The Squall : Gloucester.

JOHN R. CONNER.

- 335 Winter.

CHILDE HASSAM.

- 336 Broadstairs.
- 337 The Blue Sea.
- 338 Under the Chalk Cliffs : Broadstairs.

JOHN R. CONNER.

- 339 Gray Barns.

MARIANNA SLOAN.

340 Storm Cloud.

JOSEPH DUSHINSKY.

341 The Beech.

VIOLET OAKLEY.

342 The Man and Science.

343 Youth and the Arts.

344 The Child and Tradition.

345 Youth and the Arts.

346 The Man and Science.

347 Youth and the Arts.

PAULA B. HIMMELSBACH.

348 The Erectheum : Sundown.

349 Acropolis.

350 Silhouette : Purple and Gold.

351 Acropolis : Sunrise.

HELENA STURTEVANT.

352 First Signs of Spring.

PAULA B. HIMMELSBACH.

353 Parthenon : Late Afternoon.

MARIE PAULE CARPENTIER.

354 Convent Court : St. Odille.

PAULA B. HIMMELSBACH.

355 Acropolis : In Golden Light.

356 Parthenon.

LOUISA C. STURTEVANT.

357 Garden by the Sea.

PAULA B. HIMMELSBACH.

358 Theseum: Late Afternoon.

359 Hills beyond Athens.

HELEN M. TURNER.

360 Farm Lands.

361 The Winding Road.

MAUD H. SQUIRE.

362 Breton Market.

363 Cottage: Black Forest.

HELEN M. TURNER.

364 The Mountain Village.

JANE PETERSON.

365 La Vieille Rue Dom: Maurice; Quimperle.

366 The Market: Quimperle.

MAUD H. SQUIRE.

367 Farmhouse: Black Forest.

368 After Church: Black Forest.

HELEN M. TURNER.

369 Farm Lands No. 2

CLARA ELSENE PECK and J. SCOTT WILLIAMS.

370 Illustration for Poem.

Lent by Collier's Weekly.

371 Illustration for Poem.

Lent by Collier's Weekly.

## GALLERY F.



ERNEST DAVID ROTH.

401 A Roman Street.

MARGARET JORDAN PATTERSON.

402 Little House: Sluis.

WILLIAM M. PAXTON.

403 Lake Como.

FREDERIC NUNN.

404 The Emerald Sea.

WILLIAM M. PAXTON.

405 Bellagio.

406 View from Como.

407 The End of Lake Como.

FREDERIC NUNN.

408 A New England Beach.

ERNEST DAVID ROTH.

409 Barnyard.

MARGARET JORDAN PATTERSON.

410 The Mill: Rügen.

EMMASITA REGISTER CORSON.

- 411 From the Spanish Pier.
- 412 Snowbound.

WILLIAM M. PAXTON.

- 413 Pandora.

EMMASITA REGISTER CORSON.

- 414 Glow.
- 415 Midwinter.

ALEXANDER MARCETTE.

- 416 On the Dune.

MARIANNA SLOAN.

- 417 Afternoon: St. Ives Beach.

HAROLD M. CAMP.

- 418 Paling Moon: Winter Dawn.
- 419 Clouds Assembling.
- 420 The Morning Mist.

BLANCHE DILLAYE.

- 421 On the Grand Moran.

RICHARD BASELEER.

- 422 Shell Fisher.

HAROLD M. CAMP.

- 423 Barren Hill.
- 424 Midnight Sea.
- 425 The Unknown Shore.



RICHARD BASELEER.

426 North Sea.

MARY RUSSELL FERRELL.

427 Rocks on the Coast of Maine.

S. EDWIN WHITEMAN.

428 Spring Morning.

E. LAMPERT COOPER.

429 A Corner in Laufenberg.

HILDA BELCHER.

430 Alfreda in Blue.

F. LE GOUT-GÉRARD.

431 Nocturne.

CHARLES WARREN EATON.

432 From the Terrace: Bellagio.

FRED WAGNER.

433 Oyster Fleet: Early Morning.

LOUIS KRONBERG.

434 Preparing for the Dance.

JANE PETERSON.

435 The Fête, Villa Serbelloni.

HANS VON BARTELS.

436 The Old Mussel-fishers.

*WATER COLORS, ETC.*

---

S. HARKNESS MCCREA.

437 Near Ridgfield.

F. LE GOUT-GERARD.

438 The Chapel.

CLARA N. MADEIRA.

439 St. Fermin.

CHARLES WARREN EATON.

440 Monté Crocione: Lake Como.

ALEXANDRE NOZAL.

441 Surf at Etretat.

F. LE GOUT-GÉRARD.

442 In the Harbor of Concarneau.

A. H. ANNAN.

443 Sunlight and Shadow.

GEORGE WALTER DAWSON.

444 Sketch: Chrysanthemums and Asters

445 Sketch: Venice.

GEORGE H. HALLOWELL.

446 The Cloud.

FRANK X. FERG.

447 Baldwin's Locomotive Works.

*WATER COLORS, ETC.*

---

GEORGE H HALLOWELL.

- 448 **Forest Fire, No. 2.**  
Lent by Mrs. Charles Sidney Waldo, Jr.
- 449 **Wild Sky.**  
Lent by Mrs. Charles Sidney Waldo, Jr.
- 450 **Snow Trees.**
- 451 **Log Jam.**  
Lent by Mrs. Charles Sidney Waldo, Jr.
- 452 **Forest Fire, No. 1.**  
Lent by Mrs. Charles Sidney Waldo, Jr.
- 453 **Kathadin Basin.**  
Lent by Mrs. Osborne Howes.
- 454 **At Sunrise.**
- 455 **Winter Morning.**

GEORGE WALTER DAWSON.

- 456 **A Venetian.**  
Lent by Mrs. Albert C. Wood.
- 457 **A Ravello Garden.**  
Lent by William Warren Harper.

JOHN J. DULL.

- 458 **Marine.**
- 459 **Autumn.**

JEAN JULIEN LEMORDANT.

- 460 **Old Woman.**

JOHN J. DULL.

- 461 **Wind Clouds.**
- 462 **Landscape.**

TABER SEARS.

463 Harbor of St. Georges : Bermuda.

CHARLES HOPKINSON.

464 Marine.

TABER SEARS.

465 Roofs and Sails: Bermuda.

466 The Cedar in Pembroke : Bermuda.

JOHN MARIN.

467 Near the Clouds: Tyrol.

468 Fifth Avenue, New York.

469 The Big Tree: Delaware River Country.

470 Mountain and Clouds : Tyrol.

471 Looking from Kufstein: Tyrol.

472 The Two Elevators: Weehawken.

473 Crown of the Mountain: Tyrol.

474 Hudson River ; near West Point.

475 Girl Sewing.

476 A Cloud Effect: Tyrol.

477 The Mountain: Tyrol.

478 Wild Flowers.

479 Rolling Land: Delaware River Country.

480 Cascade in the Tyrol.

481 Clouds and Hills: Delaware River Country.

TABER SEARS.

482 The Tropical Sea: 1.

483 Hamilton Garden: Bermuda.

484 The Limestone House: Bermuda.

CHARLES HOPKINSON.

- 485 Study of Winter: Manchester.
- 486 Surf.
- 487 Study of Winter: Manchester.

JEAN JULIEN LEMORDANT.

- 488 Jeune Fille, Costume de fête.

CHARLES HOPKINSON.

- 489 Fishing Village.
- 490 Study of Winter at Manchester.

LUCY S. CONANT.

- 491 On the Palatine.
- 492 Mondragone Cypresses.

FLORENCE ESTE.

- 493 Old Pine Trees.

G. F. ORR.

- 494 Evening.

DODGE MACKNIGHT.

- 495 Sandstone Cliffs: Newfoundland.  
Lent by Desmond Fitz Gerald.
- 496 Sandstone Cliffs: Newfoundland.  
Lent by Desmond Fitz Gerald.
- 497 Sandstone Cliffs: Newfoundland.  
Lent by Desmond Fitz Gerald.
- 498 Sandstone Cliffs: Newfoundland.  
Lent by Desmond Fitz Gerald.
- 499 Sandstone Cliffs: Newfoundland.  
Lent by Desmond Fitz Gerald.
- 500 Sandstone Cliffs: Newfoundland.  
Lent by Desmond Fitz Gerald.

*WATER COLORS, ETC.*

---

FLORENCE ESTE.

501 The First Snow.

ELIZABETH HUNT BARRETT.

502 Birches.

FLORENCE ESTE.

503 The Church at Tremerenc.

J. L. FONGEROUSSE.

504 Doorway in Venice.

RENÈ MENARD.

505 The Estuary of the Odet.

HANS VON BARTELS.

506 Dortrecht Girls.

THOMAS P. ANSHUTZ.

507 Portrait.

F. LUIGINI.

508 The Fireside.

RENÈ MENARD.

509 Sunset on a Rocky Coast.

HANS VON BARTELS.

510 Dutch Interior.

F. LUIGINI.

511 Flemish Canal.

*WATER COLORS, ETC.*

---

ALBERT LECHAT.

512 Street in Beauvais.

HANS VON BARTELS.

513 Milkmaid: Holland.

F. LUIGINI.

514 The Road from Nieuport (aquarelle).

ALBERT LECHAT.

515 La Gloire: Beauvais.

HUGH H. BRECKENRIDGE.

516 An Autumn Meadow.

517 The Orange Tree.

518 The Creek in Autumn.

519 Phlox in Sunlight.

520 Green and Gold.

521 Autumn Hillside.

ARTHUR B. CARLES.

522 The Coming Squall.

FRANK C. MATHEWSON.

523 Cornish Interior.

HAROLD B. WARREN.

524 The Cloud Veil: Lake Louise.



*WATER COLORS, ETC.*

---

FRANK REED WHITESIDE.

525 Moonlight: Zuni Pueblo.

EDWARD DUFNER.

526 Summer Morning.

CHARLES W. HUDSON.

527 The Ship that Passed.

HAROLD B. WARREN.

528 Mists Rising from the Woods.

FRANK REED WHITESIDE.

529 Moonlight in the Cove.

MARY LANGTRY.

530 Ducks Preening their Feathers.

LOUIS PAYRET-DORTAIL.

531 The Pont du Cheval: Bruges.

LUCY S. CONANT.

532 The Campidoglio.

533 S. S. Giovanni e Paulo.

EDWARD DUFNER.

534 Summer Days.

*WATER COLORS, ETC.*

---

LUCY S. CONANT.

535 San Francisco from the Palatine.

536 Convent on the Palatine.

MAURICE B. PRENDERGAST.

537 The Sea Side: St. Malo.

HARRY H. OSGOOD.

538 Mountain Slope.

MAURICE B. PRENDERGAST.

539 The Old Fort: St. Malo.

540 Midsummer: St. Malo.

541 Water and Rocks: St. Malo.

HARRY H. OSGOOD.

542 Mountain Holly.

## GALLERY E.



SIR CHARLES HOLROYD.

601 The Salutè at Sunrise.

EDWARD MCDOWELL.

602 A Little Lady in Pink.

EDITH LUCILE HOWARD.

603 Late Afternoon: Autumn.

HELENA STURTEVANT.

604 Moonlight on the Beach.

J. B. REID.

605 Widcombe Manor: Bath.

MAUD H. SQUIRE.

606 Politics.

SAMUEL HALPERT.

607 View along the Seine.

LEON MARMET.

608 Rogue River.

HENRY J. GLINTENKAMP.

609 A Tenement Window.

THEODORA LINS.

610 Study.

*WATER COLORS, ETCHINGS, ETC.*

DOROTHY STEVENS.

611 Group of Etchings.

A—Ponte Vecchio.

B—Nude.

C—Firenze.

D—Fiesole.

JOSEPH PENNELL.

612 Group of Etchings.

A—The Great Chimneys: Bradford.

B—The Stock Yards: Chicago.

C—The Lake Front: Chicago.

D—The Railway: Bradford.

E—The Great White Cloud: Leeds.

F—Venice: At Work.

MABEL R. WARD.

613 Arnold's Fish House.

DOROTHY STEVENS.

614 Coppelia.

615 Mlle. de Maupin.

H. W. RUBINS.

616 Group of Etchings.

A—The Barge.

B—Harlem River: Coal Elevator.

C—East Side Building.

D—The Gray Entrance.

E—Incoming Steamer.

F—The Far East.

*WATER COLORS, ETCHINGS, ETC.*

---

GEORGE CHARLES AID.

617 St. Nicholas du Chardonnet.

W. A. HOFSTETTER.

618 The Mill : Pleasant Mills.

ANNI VAN WESTRUM.

619 An Old Town.

GEORGE CHARLES AID.

620 Passage des Carmélites.

BROR J. O. NORDFELDT.

621 Group of Etchings.

A—The Night Shift.

B—Illinois Steel Co.

C—My Mother.

D—Smoke : South Deering.

E—Clark Street.

F—Five O'clock.

ERNEST DAVID ROTH.

622 Ponte Vecchio : Morning.

E. K. KENT WETHERILL.

623 Group of Etchings.

A—The Dorms.

B—Library Entrance ; Bryn Mawr College.

ERNEST DAVID ROTH.

624 Group of Etchings.

A—Ponte Vecchio : Evening.

B—A Covered Street : Florence.

C—Along the Arno : Florence.

D—Near the Rialto : Venice.

*WATER COLORS, ETCHINGS, ETC.*

---

FRANK REED WHITESIDE.

625 A Summer Night.

STUART DAVIS.

626 Interior.

MARY ROLFE.

627 Evening.

JOSEPHINE PADDOCK.

628 Munich Roofs.

FRANK M. MOORE.

629 Sunset on the Flats.

630 The Feedbag.

WILLIAM WALTON.

631 The Jinn.

H. MONTAGUE DONNER.

632 The Forsaken Goddess.

WILLIAM WALTON.

633 The Untiring Fury.

DAVID B. MILNE.

634 Group of Etchings.

A—Madison Square: Spring.

B—Whitehall Building.

SEARS GALLAGHER.

635 Appledore: England.

*WATER COLORS, ETCHINGS, ETC.*

---

BERTHA E. JAQUES.

636 The Palazzo Minelli : Venice.

SEARS GALLAGHER.

637 Cedars.

WILL J. QUINLAN.

638 Portrait of an Old Man.

S. DAVIS OTIS.

639 Monotype.

DONALD SHAW MACLAUGHLAN.

640 The Two Pines.

BERTHA E. JAQUES.

641 A Sunny Corner : Ville Franche.

F. W. HARER.

642 Emigrants.

643 At the Piano.

DONALD SHAW MACLAUGHLAN.

644 The Life of the Thames.

WILL J. QUINLAN.

645 Repairing the Damage.

BERTHA E. JAQUES.

646 The Tangle : Chioggia.

WILL J. QUINLAN.

647 The Old Spy Oak.



*WATER COLORS, ETCHINGS, ETC.*

---

DONALD SHAW MACLAUGHLAN.

648 Salute.

H. YOSHIDA.

649 Sketch : Old Cabins.

DONALD SHAW MACLAUGHLAN.

650 The Pool.

H. YOSHIDA.

651 Sketch.

RUDOLPH RUZICKA.

652 St. John's in Varick Street.

DONALD SHAW MACLAUGHLAN.

653 Group of Etchings.

A—A Song of Venice.

B—Lanterbrunnen.

CLARA VIRGINIA RICHARDSON.

654 Digging Clams.

CHARLES HOPKINSON.

655 Study of Winter at Manchester.

LEON DABO.

656 The Cedars: Woodstock.

OLIVER N. CHAFFEE, JR.

657 Grey Day.

FRA NK X. FERG.

658 Sherwood Hills.

*WATER COLORS, ETCHINGS, ETC.*

F. W. HARER.

659 Portrait.

MARJORIE ELLEN WATMOUGH.

660 Jeanne.

F. W. HARER.

661 Scavenger.

WILLIAM M. PAXTON.

662 Lugano.

LEON DABO.

663 The Bay : Evening.

MARION H. BECKETT.

664 Begonias.

EVERETT L. WARNER.

665 Group of Etchings.

A—The Old Library ; Yale University.

B—Dol de Bretagne.

C—Moonlight : Montreuil.

D—The Brooklyn Bridge.

E—Phelps Hall : Yale University.

F—Old Warehouses : Nordlinger.

J. ANDRÉ SMITH.

666 The Reach : Vinal Haven.

WILLIAM LEVY.

667 The Etcher.

RUDOLPH RUZICKA.

668 The East River : New York.

*WATER COLORS, ETCHINGS, ETC.*

---

CHARLES B. KING.

- 669 Near Amsterdam.
- 670 St Marks : Venice.
- 671 Head after Chardin.

J. WILLIAM SERVER.

- 672 Drawing in Charcoal.

DONALD SHAW MACLAUGHLAN.

- 673 Helene.

CHARLES B. KING.

- 674 Furnes.

H. DEVITT WELSH.

- 675 Monotype III: A Portrait.
- 676 Monotype IV: The Lady in the Kimona.

CHARLES B. KING.

- 677 Twilight.

ETTORE CASER.

- 678 The Red Ship.

HARRY A. MATHES.

- 679 Still Life.

ETHEL HERRICK.

- 680 A Pergola in Penllyn.

CLARICE PETREMONT.

- 681 In a Garden.
- 682 Before the Dawn.

*WATER COLORS, ETCHINGS, ETC.*

---

JOHN LA FARGE.

683 Sketch.

Lent by Dr. George Woodward.

THEODORA LINS.

684 Study: Gold Fish.

FEROL SIBLEY.

685 Miss Dick.

SIR CHARLES HOLROYD.

686 Selwyn Image, Esq.

JULIA BOGERT.

687 Old Doorway in Warren.

FRED L. PITTS.

688 Fish Houses at Ogunquit.

ANNIE G. SYKES.

689 Among the Islands.

W. S. HYATT.

690 Cara.

MARY RUSSELL FERREL.

691 Study of a Head.

F. X. LEYENDECKER.

692 The Story Book.

Lent by Collier's Weekly.

*WATER COLORS, ETCHINGS, ETC.*

---

ANNIE G. SYKES.

693 A Rocky Pasture.

HENRY J. PECK.

694 The Whale-walk.

SIR CHARLES HOLROYD.

695 Profile Portrait.

EMMASITA REGISTER CORSON.

696 Pose.

WALTER DOUGLAS.

697 The Fight.

MARY MINNS MORSE.

698 The Pink Cloud.

699 Sewing Circle; Brittany.

R. MAHLER.

700 A Study.

## CENTRAL GALLERY



MORRIS HALL PANCOAST.

701 The Circus Posters.

HELEN M. COX.

702 Portrait Study.

HARRIET SARTAIN.

703 Showery Day : South Penn Square.

LUCY S. CONANT.

704 An Italian Hill Town.

JOHN M. SWAN.

705 Lioness and Cubs Drinking at a Torrent.

M DENEALE MORGAN.

706 Dunes and Windswept Pines.

SEARS GALLAGHER.

707 Foggy Day : Venice.

MAHONRI M. YOUNG.

708 The Brick Yard.

CLARENCE K. CHATTERTON.

709 Kids Paddling.

*WATER COLORS, ETC.*

---

HOWARD GILES.

710 The Models.

HERBERT E. EVERETT.

711 Mrs. Savage's Garden: Newburyport.

OTTO BIERHALS.

712 Street Scene: Rothenburg.

ALICE CUSHMAN.

713 Before the Long Rain.

714 Close of Day.

DAVID WILSON JORDAN.

715 Evening: Amalfi.

JOHANNA M. BOERICKE.

716 Acropolis at Sunset.

HUGH NEWELL.

717 In Spring.

CHARLES MENTE.

718 After a March Rain.

ARRAH LEE GAUL.

719 A Street in St. Jean.

WILL S. BUDWORTH.

720 Meadow Barn.

JOHN C. HUFFINGTON.

721 January Day.

*WATER COLORS, ETC.*

---

CORNELIA PERRIN STONE.

722 Pink Roses.

HERBERT E. EVERETT.

723 Miss Spalding's Garden : Newburyport.

MABEL SCHUMO.

724 A Gleam of Gold.

JOSEPH A. NESMITH.

725 Beech Tree.

ELIZABETH HOWELL INGHAM.

726 Girl in White.

LAURA COOMBS HILLS.

727 The Tea Table.

GEORGIA TIMKEN FRY.

728 Grand Canyon.

JOSEPH NESMITH.

729 Moat Mountain.

JOSEPHINE WOOD COLBY.

730 The Fountain.

HERBERT E. EVERETT.

731 Moseley Garden : Newburyport, Mass.

MABEL SCHUMO.

732 A Wood Nymph.



*WATER COLORS, ETC.*

---

EDWARD C. VOLKERT.

733 Storm Cloud.

JOHN J. DULL.

734 Sunset.

H. L. HOFFMAN.

735 The Ronda Bridge.

GASTON LA TOUCHE.

736 The Sleeper.

737 Alcohol.

ALBERT M. GARRETSON.

738 Venetian Night.

MARIE PAULE CARPENTIER.

739 Old Byway.

ADÈLE WILLIAMS.

740 An Old Fashioned Garden.

CHESTER S. KINGSLEY.

741 August.

CHARLES W. HUDSON.

742 Blue Lake.

HELEN K. MCCARTHY.

743 After Rain.

MARTHA SILSBEE.

744 Monadnock.

*WATER COLORS, ETC.*

---

WILL S. BUDWORTH.

745 Road to Ox Bow Lake.

FRANK REED WHITESIDE.

746 The Sea at Evening.

MOORE SMITH.

747 Venetian Boats.

EVERETT L. WARNER.

748 Moonlight: Dinan.

REBECCA G. ALLEN.

749 Ponte Trinità: Florence.

COLIN CAMPBELL COOPER.

750 Gateway in Brittany.

MARTHA SILSBEE.

751 A Visitor: Holland.

COLIN CAMPBELL COOPER.

752 Broadway from the Post Office.

ATHOS CASARINI.

753 The Singer Tower.

COLIN CAMPBELL COOPER.

754 South Porch: Chartres Cathedral.

MARTHA SILSBEE.

755 Asleep: Holland.

*WATER COLORS, ETC.*

---

EVERETT L. WARNER.

756 Edinburg.

REBECCA G. ALLEN.

757 From a Balcony in Gardone.

MARGARET REDMOND.

758 Capri.

759 On the Marina: Grande Capri.

ADÈLE WILLIAMS.

760 On the Beach.

HELEN MORTON COX.

761 A Bit of the Farm-yard.

MARIANNA SLOAN.

762 Morning: St. Ives Beach.

GEORGIA TIMKEN FRY.

763 Twilight.

FLORENCE ESTE.

764 June Morning.

PHYLLIS W. FOWKES.

765 A Study of Fish.

MARIANNA SLOAN.

766 Porthmeor Beach; St. Ives.

A. H. ANNAN.

767 Old Quebec from the Terrace.

WATER COLORS, ETC.

SUSAN H. BRADLEY.

768 Wharf at Monhegan.

JULIA BOGERT.

769 Garden in Bristol, Rhode Island.

E. LAMPERT COOPER.

770 In a Brittany Town.

FRANK C. MATHEWSON.

771 Early Morning: Provincetown.

CHARLES EMILE HEIL.

772 Midwinter.

E. O. WINGERT.

773 Portrait.

ALBERT PRENTICE BUTTON.

774 Harrowing.

EDITH LUCILE HOWARD.

775 The Moonlit Pool.

CHRISTIAN GEORGE SPOERL.

776 Cliffs near Dover: England.

CLARA MAMIE NORTON.

777 A Bunch of Violets.

L. M. CHURBUCK.

778 Surf: Bass Rocks.

*WATER COLORS, ETC.*

---

MARIANNA SLOAN.

779 The Thames, at Chelsea.

ALBERT PRENTICE BUTTON.

780 Egg Rock Light.

LESLEY JACKSON.

781 The Alhambra : Spain.

BERTHA E. PERRIE.

782 An Old Wharf.

783 A Garden in Annisquam.

CHARLES COPELAND.

784 The Island Pasture.

785 Fishing Boats.

MARY MINNS MORSE.

786 Nassau Harbour.

787 The Blue Channel.

CHARLES H. WRIGHT.

788 A Glimpse of the Sound.

HELEN MORTON COX.

789 Hollyhocks.

MARGARET JORDAN PATTERSON.

790 The Casa Consistorial.

CLARA WEAVER PARRISH.

791 On the Quai.

MARGARET JORDAN PATTERSON

792 The Castle in Spain.

EDWARD MCDOWELL.

793 Types of Breton Peasants.

MARGARET JORDAN PATTERSON.

794 En la Calle: Guipúzcoa.

CLARA WEAVER PARRISH.

795 The Book-worms.

E. NARDI.

796 Fountain in the Villa D'Este: Rome.

WILL S. BUDWORTH.

797 Late Afternoon, Spring.

EDMUND H. GARRETT.

798 Clevedon Court.

799 Berkeley Castle.

SUSAN H. BRADLEY.

800 Mount Desert: Maine.

801 On Brink of Grand Canon in January.

RICHARD BASELEER.

802 The Waif.

SUSAN H. BRADLEY.

803 Garden of the Gods: Colorado.

804 Rising Wind and Clearing Fog.

805 Third Beach: Newport.

*WATER COLORS, ETC.*

---

KATHARINE PATTON.

806 At the Foot of the Cliffs.

FREDERIC NUNN.

807 A Jersey Beach.

ALBERT LECHAT.

808 The Promenade (Doullens).

LOUIS PAYRET-DORTAIL.

809 Evening.

HOWARD SMITH.

810 The North River.

CHARLES W. HUDSON.

811 Pines and Sea.

ALEXANDER MARCETTE.

812 In Holland.

ALBERT LECHAT.

813 Harbor of Boulogne-sur-mer.

CHARLES SARKA.

814 After the Bath.

ANGELA O'LEARY.

815 A French Farm.

ANNE BOSWORTH GREENE.

816 A Valley in the Dunes.

UNA HUNT.

817 Veere from the Dyke.

CHARLES SARKA.

818 Summer Days.

ANGELA O'LEARY.

819 In the Village.

CHARLES COPELAND.

820 Sunlight and Shadow.

A. BRYAN WALL.

821 Edge of the River.

JAMES HENRY MOSER.

822 Morning on the Conewango Creek.

ALEXANDER NOZAL.

823 After a Snow Storm in May at Owants sur  
Montreux.

FRANK X. FERG.

824 Flying Clouds.

WALTER EMERSON BAUM.

825 The Creek in Winter.

JAMES HENRY MOSER.

826 Summer Haze : Lake Placid.

EDWARD DUFNER.

827 Running Water : Pastel.



*WATER COLORS, ETC.*

---

LEON DABO.

828 Jim's Hill.

829 September : The Catskills.

GERTRUDE B. BOURNE.

830 A New England Porch.

R. MAHLER.

831 Spring.

HELEN MORTON COX.

832 First Aid to the Injured.

MARIANNA SLOAN.

833 Tregenna Castle.

ANNE BOSWORTH GREENE.

834 \*Glimpse of the Harbor.

CLARENCE K. CHATTERTON.

835 Along the Hudson.

ARTHUR E. BECHER.

836 Idle Moments.

CLARA N. MADEIRA.

837 Cottage in Moonlight.

GEORGE T. TOBIN.

838 Woodland Road.

R. MAHLER.

839 Head of a Girl.

*WATER COLORS, ETC.*

---

HARRIET SARTAIN.

840 A New Hampshire Moor.

841 Rothenburg Gossips.

ADELAIDE DEMING.

842 A Corner in the Harbor.

WILLIAM P. SILVA.

843 Sunset in Maryland.

HARRIET SARTAIN.

844 Mountain Pasture: Late Afternoon.

845 Ronbtheurg Towers.

FANNY WALLACE TEWKSBURY.

846 Blue Hills.

WILLIAM J. COFFEE.

847 The Castle of Heart's Desire.

BLANCHE DILLAYE.

848 Injun Mountain.

ETHEL LOUISE PADDOCK.

849 Housetops.

DAVID B. MILNE.

850 Bronx River.

ALBERT H. SONN.

851 Von der Donk.

*WATER COLORS, ETC.*

---

H. WINTHROP PEIRCE.

852 Orizaba.

WALTER EMERSON BAUM.

853 Summer Afternoon.

HANS VON BARTELS.

854 Old Peasant Wife; Brittany.

FRANK E. SCHOONOVER.

855 A Friendly Game.

ANTOINETTE DE FOREST MERWIN.

856 Maiden Meditation.

FEROL SIBLEY.

857 In the Capitol Square.

ROSINA EMMET SHERWOOD.

858 Portrait of a Girl.

MARTHA WALTER.

859 Late Afternoon: Madison Square.

AGNES M. WATSON.

860 The City's Winter.

C. C. MASE.

861 The Sea.

LOUIS C. TIFFANY.

862 Street in Algiers.

*WATER COLORS, ETC.*

---

CHARLES MENTE.

863 Palisades near Haverstraw.

H. L. HOFFMAN.

864 Water Carriers of Tangiers.

HELENA STURTEVANT.

865 Second Beach : Newport.

ROSINA EMMET SHERWOOD.

866 The First Born.

MABEL SCHUMO.

867 In the Land of the Palm.

LILLIAN R. REED.

868 A Sunny Stretch.

W. J. AYLWARD.

869 Boston Harbor.

CHARLES WARREN EATON.

870 The Last Gleam : Lake Como.

CHARLES W. HUDSON.

871 Golden Vale : Jamaica.

LILLIAN R. REED.

872 High Pasture.

MARGARET REDMOND.

873 The Wishing Arch.

*WATER COLORS, ETC.*

---

PHILIP L. HALE.

874 *Clytie.*

LAURA COOMBS HILLS.

875 *White Petunias.*

JOHN J. DULL.

876 *The Beach.*

MARION H. BECKETT.

877 *Nude.*

ETTORE CASER.

878 *The Viaticum.*

WALTER N. CLEMENT.

879 *Melancholy.*

MAURICE BRAUN.

880 *Nocturne.*

JOHN J. DULL.

881 *Cloud.*

MARION H. BECKETT.

882 *Nude.*

ETTORE CASER.

883 *The Two Sisters.*

FRED. WAGNER.

884 *Brooklyn Bridge.*

885 *East River; Night.*

WATER COLORS, ETC.

---

M. W. ZIMMERMAN.

886 Sky Study.

WILL H. STEVENS.

887 The Wood's Edge.

EDMOND WEILL.

888 Early Spring.

M. W. ZIMMERMAN.

889 Sky Study.

FRED. WAGNER.

890 Bit of Erie Basin.

891 East River and Brooklyn Bridge.

M. W. ZIMMERMAN.

892 Sky Study.

CONSTANCE A. MEEKS.

893 Old Houses: Gruyère.

ALICE W. DONALDSON.

894 The Meadow.

ALICE SCHILLE.

895 Saturday Morning.

896 The Road to Town.

ANNI VAN WESTRUM.

897 Windmill.

*WATER COLORS, ETC.*

---

JOHN R. CONNER.

898 A New Britain House.

WALTER EMERSON BAUM.

899 Misty Morning in Winter.

MARION H. BECKETT.

900 Crecy Canal.

W. S. HYATT.

901 Note: Grey and Rose.

HENRY C. WHITE.

902 Morning Mists.

903 Winter Afternoon.

JOSEPHINE PADDOCK.

904 Twilight.

FRANK REED WHITESIDE.

905 Indian Summer.

LOUIS PAYRET-DORTAIL.

906 The Mill: Bruges.

W. S. HYATT.

907 Note: Grey and Silver.

LAURA D. S. LADD.

908 Flower Study.

909 Flower Study.

ALICE SCHILLE.

910 The Market Begins.

911 Morning Effect.

LAURA D. S. LADD.

912 Flower Study.

ANNE MERRIMAN PECK.

913 Gossips.

CHARLES EMILE HEIL.

914 Phoebe.

ELIZABETH OTIS.

915 Sketch of Italian Mother and Child.

MARGARET REDMOND.

916 Villa, Mustapha Superior, Algeria.

MARGARET JORDAN PATTERSON.

917 The Canal with Trees.

CHARLES EMILE HEIL.

918 Blue Jay.

MARION H. BECKETT.

919 Primrose.

CHARLES EMILE HEIL.

920 Field Sparrow.

ELIZABETH OTIS.

921 Sketch of Italian Mother and Child.



*WATER COLORS, ETC.*

---

MARGARET REDMOND.

922 The Village.

AMY MALI HICKS.

923 Wild Convolvulus.

ALICE W. DONALDSON.

924 Old Houses.

ALICE SCHILLE.

925 St. Germain-des-Prés at Night.

926 Saint Michel.

N. T. OSGOOD.

927 Players.

ANNE MERRIMAN PECK.

928 Market Women.

FRED. WAGNER.

929 Fishing Boats Drying Sails.

930 Fishing Boats: Grey Dory.

OTTO BIERHALS.

931 Old Well: Rothenburg.

FRED. WAGNER.

932 Park Place: Rainy Night.

933 Near Fulton Market.

EMMASITA REGISTER CORSON.

934 Golden Days.

FRED. WAGNER.

935 Foot of Broadway.

936 Barges at Coenties Slip.

OTTO BIERHALS.

937 Street Scene : Munich.

A. ELIZABETH SAWTELLE.

938 A Misty Morning : Venice.

WILLIAM S. WOOD.

939 The Quarry.

940 Evening.

HAROLD M. CAMP.

941 The Dawn Star.

JOHANNA M. BOERICKE.

942 Acropolis : Evening Light.

FREDERICK BOWER.

943 Perch.

EMMASITA REGISTER CORSON.

944 Cherry Trees.

BERTHA E. PERRIE.

945 Rocks and Pond.

M. W. ZIMMERMAN.

946 Sky Study.

*WATER COLORS, ETC.*

---

CLARA WEAVER PARRISH.

947 An Old Fashioned Lady.

WILLIAM S. WOOD.

948 The White Birch.

CLARA WEAVER PARRISH.

949 Beatrice.

AMY MALI HICKS.

950 Brush Drawing of Sassafras Branch.

CLARA WEAVER PARRISH.

982 Natalie.

ALICE W. DONALDSON.

983 Cotton Blossoms.

CLARA WEAVER PARRISH.

984 Lady in Black.

SIR CHARLES HOLROYD.

985 Nappa Scar : Yorkshire.

## SOUTH TRANSEPT



HILDA BELCHER.

951 The Little Boston Girl.

952 The Fairy Book.

CHARLES MENTE.

953 The Old Farm in Winter.

ELIZABETH A. SAWTELLE.

954 Village Street.

CARL BUERGERNISS.

955 Sylvia: a Portrait.

WILL H. STEVENS.

956 Moon in the Tree.

K. N. RHOADES.

957 Venice.

RICHARD F. MAYNARD.

958 Reading.

PHYLLIS W. FOWKES.

959 Fruit and Old Brass.

MINA FONDA OCHTMAN.

960 An Old Farm.

*WATER COLORS, ETC.*

---

WILLIAM P. SILVA.

961 Afternoon: Shelter Island.

LETTA CRAPO SMITH.

962 A New Bedford Quaker Lady at 89.

CHARLES W. HUDSON.

963 Palms and Cliff.

ALEXANDER MARCETTE.

964 The Herd.

S. HARKNESS MCCREA.

965 After the Winter.

HANS VON BARTELS.

966 La bénédiction de la mer.

CHARLES P. GRUPPE.

967 The River Bank.

F. LE GOUT-GÉRARD.

968 Evening Calm : Brittany.

LILLIAN R. REED.

969 Moonlight.

CLARA J. MACCHESNEY.

970 An Old Lady.

CHARLES W. HUDSON.

971 Hill Top.

*WATER COLORS, ETC.*

---

EDWIN S. CLYMER.

972 Early Spring.

ARTHUR B. WILDER.

973 Vermont Hills in Winter.

HENRY REUTERDAHL.

974 Across the Hudson.

LOUISE WEST.

975 An Interior.

EDITH F. SCHWAB.

976 The White House.

977 Moonlight.

JANE PETERSON.

978 Evening.

ALEXANDER BOWER.

979 Stormy Weather.

ELIZABETH F. BONSALE.

980 Chicken.

H. C. MERRILL.

981 Café Corner: Dinan.

## SOUTH CORRIDOR



JANE PETERSON.

1001 The Sheepfold.

CLIFFORD W. ASHLEY.

1002 The Navigator.

FRANK TENNEY JOHNSON.

1003 At the Crossing of the Trails.

W. J. AYLWARD.

1004 Evacuation of Boston.

WILL. J. QUINLAN.

1005 New York Canyon.

N. C. WYETH.

1006 Three Wise Men.

CHARLES M. RUSSELL.

1007 Disputed Trail.

FRANK TENNEY JOHNSON.

1008 Navajos.

GEORGE HARDING.

1009 Bound to the Wreck.

*WATER COLORS, ILLUSTRATIONS, ETC.*

---

MARJORIE ELLEN WATMOUGH.

- 1010 Old Shack.  
1011 Study of the Nude.  
1012 The Tiger.

LOUIS A. HOLMAN.

- 1013 Fort D'Aunay.

G. WOLFE PLANK.

- 1014 The Introduction.  
Lent by Collier's Weekly.

ADOLPH TREIDLER.

- 1015 The Orange Vender.  
Lent by Collier's Weekly.

ARTHUR I. KELLER.

- 1016 Cornered.

LOUIS A. HOLMAN.

- 1017 The Harvard Gate.

HENRY REUTERDAHL.

- 1018 Seapower.  
1019 Illustration to The Senior Captain.  
Lent by Collier's Weekly.

ANDRÉ CASTAIGNE.

- 1020 The Landing Place: Liverpool.  
Lent by The Century Company.  
1021 An Artist's Fancies of Napoleon.  
Lent by The Century Company.



*WATER COLORS, ILLUSTRATIONS, ETC.*

---

CAROLINE SILVIS.

1022 Willows.

JOHN ROSS KEY.

1023 Sunset: Potomac River.

JESSIE WILLCOX SMITH.

1024 Little Nell and Her Grandfather.

LAWRENCE B. SAINT.

1025 The Shadow Ship.

JESSIE WILLCOX SMITH.

1026 Paul and Florence Dombey.

1027 Tiny Tim and Bob Cratchit.

1028 David Copperfield and Peggotty.

LAWRENCE B. SAINT.

1029 The Castle.

WUANITA SMITH.

1030 In a Golden Glow.

MARY ROLFE.

1031 Sunset.

ANDRÉ CASTAIGNE.

1032 An Italian Type.

Lent by The Century Company.

1033 A Corsican Patriot of the Old Days.

Lent by The Century Company.

*WATER COLORS, ILLUSTRATIONS, ETC.*

---

HENRY MCCARTER.

- 1034 *The Passing of the Kings.*  
Lent by Charles Scribner's Sons.

•  
ANDRÉ CASTAIGNE.

- 1035 *The Arrival.*  
Lent by The Century Company.

LOUIS LOEB.

- 1036 *The Sculptor.*  
Lent by The Century Company.

LAWRENCE B. SAINT.

- 1037 *Rouen from Bonsecours.*

W. GLACKENS.

- 1038 *Back Lot Football.*  
Lent by Collier's Weekly.

LAWRENCE B. SAINT.

- 1039 *Chartres Cathedral.*

LÆTITIA HERR.

- 1040 *The Tiny Tiny Woman.*

WALTER KARL PLEUTHNER.

- 1041 *The Library Lions.*

MARY GREENE BLUMENSCHNEIN.

- 1042 *Picture for Quest of Quesnay.*

A. I. KELLER.

- 1043 *Illustration to The Thespians.*  
Lent by Collier's Weekly.

*WATER COLORS, ILLUSTRATIONS, ETC.*

---

N. C. WYETH.

1044 The Poet.

F. C. YOHN.

1045 Illustration to The Glad Happy Joss.

Lent by Collier's Weekly.

ERNEST L. BLUMENSCHNEIN.

1046 A Boy of Wartime.

F. C. YOHN.

1047 Illustration to As an Aid to Contentment.

Lent by Collier's Weekly.

CHARLES WARREN EATON.

1048 Moonlight: Lake Como.

LOUIS LOEB.

1049 Perhaps You May Be Able to Choose a  
Wife for Me.

Lent by The Century Company.

## EAST CORRIDOR



MAY WILSON PRESTON.

1050 Licked the Creamy Edges.

JAMES PRESTON.

1051 The Old House.

1052 Chatenay.

1053 Chartres.

GEORGE H. LEONARD.

1054 Springtime: Paris.

JAMES PRESTON.

1055 Farm House: Trumble.

MAY WILSON PRESTON.

1056 An Old Man Stood and Knocked at the Door.

ALEXANDER NOZAL.

1057 In the Campagne before St. Briac.

JAMES PRESTON.

1058 Café of the Agile Rabbit.

1059 Bernay.

MAHONRI M. YOUNG.

1060 Graining the Horses.

MAY WILSON PRESTON.

1061 Music! Why I Eat it Up.

JAMES PRESTON.

1062 Paris.

FRANK E. SCHOONOVER.

1063 Maleo Basile: A Trapper.

1064 Indian Boy of Lake Mistassini.

F. W. HARER.

1065 A Corner of Dock Street.

FRANK E. SCHOONOVER.

1066 A Cree Squaw.

1067 Setting the Lynx Trap.

1068 A Bit of Domestic Life.

1069 The Catch of a Fine Martin.

1070 A Day's Trapping.

1071 Pierre Kurtness: A Cree Conjuror.

1072 Marie Awa-sheesh: Trapper.

1073 Esquimaux Breed.

1074 French-Canadian Breed.

EDWARD COMLY TREGO.

1075 The Fur Jacket.

# INDEX TO ARTISTS

## REPRESENTED IN THE PRESENT EXHIBITION

The figures following the address refer  
to the numbers in this Catalogue.

- Aid, George Charles;  
care of Albert Roullier, Esq., 410 South  
Michigan Avenue, Chicago, 617, 620.
- Allen, Rebecca G.,  
132 Marlboro Street, Boston, 749, 757.
- Annan, A. H.,  
Carnegie Hall, New York City, 443, 767.
- Anshutz, Thomas,  
Fort Washington, Pennsylvania, 507.
- Ashley, Clifford W.,  
1616 Rodney Street, Wilmington, Delaware,  
1002.
- Aylward, W. J.,  
51 West Tenth Street, New York City, 869,  
1004.
- Barrett, Elizabeth Hunt,  
Bedford Hills, New York, 501.
- Baseleer, Richard,  
Quai Van Dyck, Antwerp, 422, 426, 802.
- Bauer, M.,  
168 New Bond Street, W., London, 14.
- Baum, Walter Emerson,  
Sellersville, Pennsylvania, 825, 853, 899.
- Bean, C. Van H.,  
48 East Twenty-sixth Street, New York City,  
314, 318.

*INDEX.*

---

- Becher, Arthur E.,  
Ardsley, New York, 836.
- Becker, Harry,  
1 Beaumont Road Studios, West Kensington,  
London, 60, 61, 63, 64, 88, 92, 98, 102, 104, 154.
- Beckett, Marion H.,  
246 Boulevard Raspail, Paris, 664, 877, 882,  
900, 919.
- Belcher, Hilda,  
609 West One Hundred and Twenty-seventh  
Street, New York City, 430, 951, 952.
- Belleruche, A.,  
care of Messrs. Bourlet & Son, 17 Nassau Street,  
Mortimer, N. W., London, 75, 76, 77, 78, 86,  
94, 158.
- Bierhals, Otto,  
26 Reservoir Avenue, Jersey City, New Jersey,  
712, 931, 937.
- Blumenschein, Ernest L.,  
246 Fulton Street, Brooklyn, New York, 236,  
1046.
- Blumenschein, Mary Greene,  
246 Fulton Street, Brooklyn, New York, 1042.
- Boericke, Johanna M.,  
6375 Woodbine Avenue, Philadelphia, 716, 942.
- Bogert, Julia,  
426 Sterling Place, Brooklyn, 687, 769.
- Bonsall, Elizabeth F.,  
3430 Walnut Street, Philadelphia, 305, 980.
- Bourne, Gertrude B.,  
130 Mount Vernon Street, Boston, 830.
- Bower, Alexander,  
Woodcliffe-on-Hudson, New York, 979.
- Bower, Frederick,  
1020 Chestnut Street, Philadelphia, 943.
- Bradley, Susan H.,  
20 Brimmer Street, Boston, 768, 800, 801, 803,  
804, 805.

INDEX.

---

- Brangwyn, Frank,  
Temple Lodge, Queen Street, Hammersmith,  
W., London, 105, 107, 108, 110, 225, 226.
- Braun, Maurice,  
Isis Building, San Diego, California, 880.
- Breckenridge, Hugh H.,  
10 South Eighteenth Street, Philadelphia, 516,  
517, 518, 519, 520, 521.
- Budworth, Will S.,  
615 South Eighth Avenue, Mount Vernon, New  
York, 720, 745, 797.
- Buergerniss, Carl,  
2427 N. College Ave., Philadelphia, 955.
- Button, Albert Prentice,  
44 Boylston Street, Boston, 774, 780.
- Camp, Harold M.,  
287 Quincy Street, Brooklyn, New York, 418,  
419, 420, 423, 424, 425, 941.
- Carles, Arthur B.,  
2508 Brown Street, Philadelphia, 522.
- Carpentier, Marie Paule,  
Rue de Naubeuge 60, Paris, 354, 739.
- Carrierè,  
care of M. A. Trolin, Esq., 27 rue Laffitte, Paris,  
133, 181, 183, 185.
- Casarini, Athos,  
61 Poplar Street, Brooklyn, 753.
- Caser, Ettore,  
15 South Chandler Street, Boston, 678, 878, 883.
- Castaigne, Andre,  
9 rue Falguiere, Paris, 1020, 1021, 1032, 1033,  
1035.
- Chaffee, Jr., Oliver M.,  
Provincetown, Massachusetts, 657.
- Charlton, W. H.,  
Westcliffe, Gosfort Newcastle-on-Tyne, Eng-  
land, 5, 6, 8, 9.



## INDEX.

- Chatterton, Clarence K.,  
Newburgh, New York, 709, 835.
- Churbuck, L. M.,  
Brockton, Massachusetts, 778.
- Clement, Walter M.,  
631 Chestnut Street, Philadelphia, 879.
- Clymer, Edwin S.,  
Lanesville, P. O., Gloucester, Massachusetts,  
972.
- Coffee, William J.,  
723 Walnut Street, Philadelphia, 847.
- Colby, Josephine Wood,  
415 West Twenty-third Street, New York City,  
730.
- Cole, Timothy,  
119 Cannon Street, Poughkeepsie, New York,  
243.
- Conant, Lucy S.,  
82 Beacon Street, Boston, 491, 492, 532, 533, 535,  
536, 704.
- Conner, John R.,  
Point Pleasant, Pennsylvania, 335, 339, 898.
- Cooper, Colin Campbell,  
222 West Fifty-ninth Street, New York City,  
750, 752, 754.
- Cooper, Emma Lampert,  
222 West Fifty-ninth Street, New York City,  
429, 770.
- Copeland, Charles,  
49 Studio Building, Boston, 784, 785, 820.
- Copley, John,  
Yews, Longfield, Kent, England, 112, 113, 114,  
115, 116, 117, 118, 119, 120, 128.
- Cornell, Grace,  
33 Alsop Street, Jamaica, New York, 252, 254,  
255, 256, 263, 264, 266, 268.

INDEX.

---

- Corson, Emmasita Register,  
New Hope, Pennsylvania, 411, 412, 414, 415,  
696, 934, 944.
- Cox, Helen Morton,  
9 East Tenth Street, New York City, 702, 761,  
789, 832.
- Cushman, Alice,  
919 Pine Street, Philadelphia, 713, 714.
- Dabo, Leon,  
108 East Twenty-third Street, New York City,  
656, 663, 828, 829.
- Davis, Stuart,  
1947 Broadway, New York City, 626.
- Dawson, George Walter,  
3715½ Chestnut Street, Philadelphia, 444, 445,  
456, 457.
- Deming, Adelaide,  
Litchfield, Connecticut, 842.
- Dillaye, Blanche,  
1520 Chestnut Street, Philadelphia, 421, 848.
- Donaldson, Alice W.,  
20 Paul Avenue, Trenton, New Jersey, 894, 924,  
983.
- Donner, H. Montague,  
41 Claremont Avenue, New York City, 632.
- Douglas, Walter,  
134 West Twenty-third Street, New York City,  
697.
- Dufner, Edward,  
318 West Fifty-seventh Street, New York City,  
526, 534, 827.
- Dull, John J.,  
Drexel Institute, Philadelphia, 458, 459, 461,  
462, 734, 876, 881.
- Dushinsky, Joseph,  
64 East Ninety-fourth Street, New York City,  
341.

*INDEX.*

---

- Eaton, Charles Warren,  
318 West Fifty-seventh Street, New York City,  
432, 440, 870, 1048.
- Elliott, Elizabeth Shippen Green,  
care of Rhode Island School of Design, 11  
Waterman Street, Providence, Rhode Island,  
277, 278, 279, 280.
- Este, Florence,  
28 Ave de l'Observatoire, Paris, 493, 501, 503,  
764.
- Everett, Herbert E.,  
1632 Latimer Street, Philadelphia, 711, 723, 731.
- Fantin, Latour, Deceased,  
146, 221, 223, 224.
- Ferg, Frank X.,  
2047 South Fifty-eighth Street, Philadelphia,  
447, 658, 824.
- Ferrell, Mary Russell,  
121 W. Johnson Street, Germantown, Philadel-  
phia, 427, 691.
- Fischer, Otto,  
care of Herr Emil Richter, K. Hofkunsthändler,  
Prager Street, Dresden, Germany, 15, 17, 21,  
22.
- Fongerousse, J. L.,  
3 rue Dutot, Paris, 504.
- Fowkes, Phyllis W.,  
119 East Mount Carmel Avenue, Glenside,  
Pennsylvania, 765, 959.
- Fry, Georgia Timken,  
222 West Fifty-ninth Street, New York City,  
728, 763.
- Gabain, Ethel,  
Manor House, Bushey, Herts, England, 70, 72,  
149, 151.
- Gallagher, Sears,  
276 Boylston Street, Boston, 635, 637, 707.

INDEX.

- Garrett, Edmund H.,  
110 Tremont Street, Boston, 798, 799.
- Garretson, Albert M.,  
139 West Fifty-fifth Street, New York City, 738.
- Gaul, Arrah Lee,  
2413 North Twenty-ninth Street, Philadelphia,  
719.
- Giles, Howard,  
9 West Fourteenth Street, New York City, 710.
- Glackens, William J.,  
23 Fifth Avenue, New York City, 1038.
- Glintenkamp, Henry J.,  
704 Terminal Building, Hoboken, New Jersey,  
609.
- Greene, Anne Bosworth,  
Provincetown, Massachusetts, 816, 834.
- Grethe, Carlos,  
care of Herr Emil Richter, Hofkunsthändler,  
Prager Street, Dresden, Germany, 157, 182,  
184, 186.
- Gruppe, Charles P.,  
106 West Fifty-fifth Street, New York City, 967.
- Hale, Lilian Westcott,  
Ashcroft, Dedham, Massachusetts, 265, 267.
- Hale, Philip L.,  
Fenway Studios, Boston, 874.
- Hall, Oliver,  
Egdean Fittleworth, Sussex, England, 26, 27,  
29, 30, 32, 33.
- Hallowell, George H.,  
Jefferson Highlands, New Hampshire, 446, 448,  
449, 450, 451, 452, 453, 454, 455.
- Halpert, Samuel,  
1931 Broadway, New York City, 607.
- Hamilton, J. McLure,  
12 Grove End Road, London, N. W., 202, 203,  
204, 205, 206, 207, 208, 209, 210, 307,  
308, 309, 311, 312.

## INDEX.

---

- Harding, George,  
10 South Eighteenth Street, Philadelphia, 275,  
282, 285, 1009.
- Harer, F. W.,  
908 Filbert Street, Philadelphia, 642, 643, 659,  
661, 1065.
- Hartrick, A. S.,  
75 Clancarty Road, Parsons Green, London,  
S. W., 90, 96, 198, 199, 200, 201, 211, 212, 213,  
214.
- Hassam, Childe,  
130 West Fifty-seventh Street, New York City,  
332, 334, 336, 337, 338.
- Haydock, May S., Deceased,  
321, 322, 323, 324, 325, 326, 327, 328, 329, 330,  
331.
- Heil, Charles Emile,  
Needham, Massachusetts, 772, 914, 918, 920.
- Hein, Franz,  
Hohe Strasse 33, Leipsic, Germany, 10, 106,  
111, 155, 156.
- Herr, Lætitia,  
111 East Fifty-sixth Street, New York City, 1040.
- Herrick, Ethel,  
5407 Chester Avenue, W. Philadelphia, 680.
- Hicks, Amy Mali,  
400 West Twenty-third Street, New York City,  
923, 950.
- Hills, Laura Coombs,  
66 Chestnut Street, Boston, 727, 875.
- Himmelsbach, Paula B.,  
10 South Eighteenth Street, Philadelphia, 249,  
251, 253, 348, 349, 350, 351, 353, 355, 356, 358,  
359.
- Hoffman, H. L.,  
Lyme, Connecticut, 735, 864.

## INDEX.

- Hofstetter, W. A.,  
1445 South Fifty-third Street, Philadelphia, 618.
- Holman, Louis A.,  
201 Columbus Avenue, Boston, 1013, 1017.
- Holroyd, Sir Charles,  
Sturdie House, Walton-on-Thames, England,  
601, 686, 695, 985.
- Hope, E. A.,  
8 St. Albans Studios, St. Albans Road, Kensington,  
London, W., 79, 80, 81, 82, 83, 84.
- Hopkinson, Charles,  
Fenway Studios, Boston, 464, 485, 486, 487,  
489, 490, 655.
- Howard, Edith Lucile,  
524 Walnut Street, Philadelphia, 603, 775.
- Hudson, Charles W.,  
Hyde Park, Massachusetts, 527, 742, 811, 871,  
963, 971.
- Huffington, John C.,  
Darien, Connecticut, 721.
- Hunt, Una,  
5 Chelsea Square, New York City, 817.
- Hyatt, W. S.,  
131 North Twentieth Street, Philadelphia, 690,  
901, 907.
- Ingham, Elizabeth Howell,  
77 Irving Place, New York City, 301, 303, 726.
- Jackson, F. Ernest,  
47 Bedford Square, London, W. C., 170, 171,  
172, 173, 174, 175.
- Jackson, Lesley,  
"The Concord," Washington, D. C., 781.
- Jaques, Bertha E.,  
4316 Greenwood Avenue, Chicago, 636, 641, 646.
- Johnson, Frank Tenney,  
8 East Fifteenth Street, New York City, 1003,  
1008.

INDEX.

---

- Jordan, David Wilson,  
1430 South Penn Square, Philadelphia, 715.
- Kappstein, Carl,  
Unbertusbaderst 23, Greenewald, Berlin, 122,  
124, 125, 126, 153, 222, 227.
- Keller, Arthur I.,  
876 St. Nicholas Avenue, New York City, 238,  
239, 245, 1016, 1043.
- Kerr-Lawson, J.,  
3 Turner Studios, Glebs Place, Chelsea, S. W.,  
London, 176, 177, 178, 179, 180, 187, 188, 190,  
191.
- Key, John Ross,  
517 Corcoran Building, Washington, D. C.,  
1023.
- King, Charles B.,  
814 Jefferson Avenue, Detroit, 248, 258, 262,  
270, 669, 670, 671, 674, 677.
- Kingsley, Chester S.,  
603 West One Hundred and Forty-sixth Street,  
New York City, 741.
- Kneen, William,  
15a Brook Green, London, W., 25, 28, 31.
- Koch, George,  
Mystic, Connecticut, 313, 317.
- Kollwitz, Kathé,  
care of Messrs. Colnaghi and Obach, 168 New  
Bond Street, W., London, 59, 67, 69, 121.
- Kronberg, Louis,  
Boston Art Club, Boston, 434.
- Ladd, Laura, D. S.,  
1710 Chestnut Street, Philadelphia, 908, 909, 912.
- La Farge, John, Deceased, 683.
- Lange, Mme. Helene,  
The Goupil Gallery, 5 Regent Street, London,  
S. W., 11, 12, 18, 23, 24.

INDEX.

- Langtry, Mary,  
241 Ryerson Street, Brooklyn, 530.
- La Touche, Gaston,  
31 Dailly, St. Cloud, France, 736, 737.
- Lautree, H. Toulouse, Deceased,  
1, 2, 4, 127.
- Leandre, Charles,  
59 rue Lepic, Montmartre, Paris, 3, 16, 20.
- Lechat, Albert,  
51 rue Scheffer, Paris, 512, 515, 808, 813.
- Le Gout-Gerard, F.,  
93 rue Quimpere, Paris, 431, 438, 442, 968.
- Legrand, L.,  
care of M. Gustave Pellet, Esq., 51 rue Pele-  
tier, Paris, 35, 37, 38, 39, 40, 41, 42, 43.
- Legros, A.,  
care of Messrs. Colnaghi and Obach, 168 New  
Bond Street, London, 36, 57, 71, 73, 74, 229.
- Lemordant, Jean-Julien,  
31 Boulevard Port Royal, Paris, 460, 488.
- Leonard, George H.,  
17 rue Boissonade, Paris, 1054.
- Levy, William,  
83 Boulevard du Montparnasse, Paris, 667.
- Leyendecker, F. X.,  
care of Collier's Weekly, 416 West Thirteenth  
Street, New York City, 692.
- Lins, Theodora,  
202 Prospect Avenue, New Brighton, New York,  
610, 684.
- Loeb, Louis, Deceased,  
1036, 1049.
- Luigini, F.,  
18 rue Ballu, Paris, 508, 511, 514.
- Lunois, Alex,  
1 rue de Poissy, Paris, 100, 123, 159.



*INDEX.*

---

- MacCaffley, George,  
17 Wentworth Mansions, Hampstead Heath,  
London, N. W., 44, 49.
- MacChesney, Clara,  
27 West Thirty-third Street, New York City, 970.
- MacKnight, Dodge,  
East Sandwich, Massachusetts, 495, 496, 497,  
498, 499, 500.
- MacLaughlan, Donald Shaw,  
80 West Fortieth Street, New York City, 640,  
644, 648, 650, 653, 673.
- MacRae, Elmer Livingston,  
Cos Cob, Connecticut, 316.
- McCarter, Henry,  
Bethayres, Pennsylvania, 242, 1034.
- McCarthy, Helen K.,  
1716 Chestnut Street, Philadelphia, 743.
- McCrea, S. Harkness,  
Darien, Connecticut, 437, 965.
- McDowell, Edward,  
Carnegie Studios, 154 West Fifty-seventh Street,  
New York City, 602, 793.
- Mase, C. C.,  
Cos Cobb, Connecticut, 861.
- Madeira, Clara N.,  
care of Chas. F. Haseltine, Esq., 1822 Chestnut  
Street, Philadelphia, 439, 837.
- Mahler, R.  
939 Eighth Avenue, New York City, 700, 831,  
839.
- Manet, E.,  
care of M. A. Strölin, Esq., 27 rue Laffitte, Paris,  
144, 145.
- Marcette, Alexander,  
63 Avenue de Tervueren, Brussels, 416, 812,  
964.

## INDEX.

---

- Marin, John,  
291 Fifth Avenue, New York City, 467, 468,  
469, 470, 471, 472, 473, 474, 475, 476, 477, 478,  
479, 480, 481.
- Marmet, Leon,  
195 South Division Street, Grand Rapids,  
Michigan, 608.
- Mathes, Harry A.,  
15 East Thirty-eighth Street, New York City,  
679, 699.
- Mathewson, Frank C.,  
318 West Fifty-seventh Street, New York City,  
523, 771.
- Maynard, Richard F.,  
33 West Sixty-seventh Street, New York City,  
958.
- Meeks, Constance A.,  
3621 Broadway, Oakland, California, 893.
- Menard, Renè,  
126 Boulevard Montparnasse, Paris, 505, 509.
- Mente, Charles,  
Congers, New York, 718, 863, 953.
- Merrill, H. C.,  
514 West One Hundred and Thirty-fourth St.,  
New York City, 981.
- Merwin, Antoinette de Forest,  
11 Crestmont Road, Montclair, New Jersey, 856.
- Milne, David B.,  
8 East Forty-second Street, New York City,  
634—A, B, 850.
- Moore, Frank M.,  
939 Eighth Avenue, New York City, 629, 630.
- Morgan, M. De Neale,  
Box 67, Carmel, California, 706.
- Morse, Mary Minns.  
211 Sarin Hill Avenue, Dorchester, Mass., 698,  
786, 787.

INDEX.

---

- Moser, James Henry,  
1814 G Street, Washington, D. C., 822, 826.
- Nardi, E.,  
Rome, Italy, 796.
- Nesmith, Joseph A.,  
Lowell, Mass., 725, 729.
- Neumon, Maurice,  
care of Messrs. Bourlet & Sons, 17 Nassau  
Street, Mortimer Street, W., London, 13, 19.
- Newell, Hugh,  
51 Warren Street, Bloomfield, New Jersey, 717.
- Nordfeldt, Bror J. O.,  
1557 East Fifty-seventh Street, Chicago, 621—  
A, B, C, D, E, F.
- Norton, Clara Mamie,  
33 West Sixty-seventh Street, New York City,  
777.
- Nozal, Alexandre,  
7 Quai de Passy, Paris, 441, 823, 1057.
- Nunn, Frederic,  
Lumberville, Pennsylvania, 404, 408, 807.
- Oakley, Thornton,  
10 South Eighteenth Street, Philadelphia, 284.
- Oakley, Violet,  
"Cogslea," Allen Lane, Mount Airy, Philadel-  
phia, 310, 319, 320, 342, 343, 344, 345, 346, 347.
- Ochtman, Mina Fonda,  
Cos Cob, Connecticut, 960.
- O'Leary, Angela,  
7 Thomas Street, Providence, Rhode Island,  
815, 819.
- Orr, G. F.,  
303 Kirk Avenue, Syracuse, New York, 494.
- Osgood, Harry H.  
18 Harralson Avenue, Atlanta, Georgia, 538,  
542.

INDEX.

---

- Osgood, M. T.,  
18 Harralson Avenue, Inman Park, Atlanta,  
Georgia, 304, 927.
- Otis, Elizabeth,  
10 South Eighteenth Street, Philadelphia, 915,  
921.
- Otis, S. Davis,  
10 South Eighteenth Street, Philadelphia, 639.
- Paddock, Ethel Louise,  
130 West Fifty-seventh Street, New York City-  
849
- Paddock, Josephine,  
130 West Fifty-seventh Street, New York City,  
628, 904.
- Pancoast, Morris Hall,  
Fort Washington, Pennsylvania, 701.
- Parrish, Clara Weaver,  
939 Eighth Avenue, New York City, 791, 795,  
947, 949, 982, 984.
- Patterson, Margaret Jordan,  
Arlington Heights, Massachusetts, 402, 410,  
790, 792, 794, 917.
- Patton, Katharine,  
1522 Chestnut Street, Philadelphia, 806.
- Paxton, William M.,  
Fenway Studios, Boston, 315, 403, 405, 406,  
407, 413, 662.
- Payret-Dortail, Louis,  
43 Avenue Victor-Hugo, Paris, 531, 809, 906.
- Peck, Anne Merriman,  
340 West Eighty-fifth Street, New York City,  
913, 928.
- Peck, Clara Elsene,  
care of Collier's Weekly, 416 West Thirteenth  
Street, New York City, 370, 371.
- Peck, Henry J.,  
Claymont, Delaware, 694.

INDEX.

- Peirce, H. Winthrop,  
36 Morton Street, Andover, Massachusetts, 852.
- Pennell, Joseph,  
3 Adelphi Terrace House, Robert Street  
Strand, London, 85, 87, 89, 91, 93, 95, 97,  
99, 101, 103, 612—A, B, C, D, E, F.
- Perrie, Bertha E.,  
808 Seventeenth Street, Washington, D. C.,  
782, 783, 945.
- Peterson, Jane,  
139 West Fifty-fourth Street, New York City,  
365, 366, 435, 978, 1001.
- Petremont, Clarice,  
Shelton, Connecticut, 681, 682.
- Picketts, Charles,  
care of P. & D. Colnaghi & Obach, 168 New  
Bond Street, London, W., 129.
- Pitts, Fred L.,  
Philadelphia Sketch Club, 235 S. Camac Street,  
Philadelphia, 688.
- Plank, G. Wolfe,  
care of Collier's Weekly, 416 West Thirteenth  
Street, New York City, 1014.
- Pleuthner, Walter Karl,  
Cedarhurst, Long Island, New York, 1041.
- Prendergast, Maurice B.,  
56 Mount Vernon Street, Boston, 537, 539, 540,  
541.
- Preston, James,  
22 West Ninth Street, New York City, 1051,  
1052, 1053, 1055, 1058, 1059, 1062.
- Preston, May Wilson,  
22 West Ninth Street, New York City, 1050,  
1056, 1061.
- Pryse, Samuel Spencer,  
River Court, Hammersmith, W., London, 109,  
130, 132, 134, 135, 136, 137, 139, 141, 143.

## INDEX.

- Quinlan, Will J.,  
51 West Tenth Street, New York City, 638, 645,  
647, 1005.
- Redmond, Margaret,  
Fenway Studios, Boston, 758, 759, 873, 916, 922.
- Reed, Lillian R.,  
1710 Chestnut Street, Philadelphia, 868, 872,  
969.
- Reid, J. B.,  
22 Stratham Park, Rochester, New York, 605.
- Reuterdaahl, Henry,  
Weehawken, New Jersey, 276, 283, 974, 1018,  
1019.
- Rhoades, K. N.,  
618 Fifth Avenue, New York City, 957.
- Richardson, Clara Virginia,  
1430 South Penn Square, Philadelphia, 654.
- Rolfe, Mary,  
100 West Montgomery Avenue, Ardmore, Penn-  
sylvania, 244, 627, 1031.
- Rops, Felicien,  
care of M. Gustave Pellet, Esq., 51 rue le Pele-  
tier, Paris, 147, 148, 150.
- Roth, Ernest David,  
232 West Fourteenth Street, New York City,  
401, 409, 622, 624—A, B, C, D.
- Rubins, H. W.,  
4 Webster Terrace, New Rochelle, New York,  
616—A, B, C, D, E, F.
- Russell, Charles M.,  
Great Falls, Montana, 1007.
- Ruzicka, Rudolph,  
954 Lexington Avenue, New York City, 652,  
668.
- Saint, Lawrence B.,  
340 Walnut Street, Jenkintown, Pennsylvania,  
232, 1025, 1029, 1037, 1039.

INDEX.

---

- Sarka, Charles,  
Green Lake, Fulton County, New York, 814,  
818.
- Sartain, Harriet,  
1430 Penn Square, Philadelphia, 703, 840, 841,  
844, 845.
- Sauter, G.,  
1 Holland Park Avenue, London, W., 47, 48,  
50, 51, 52, 54, 55.
- Sawtelle, A. Elizabeth,  
1925 N Street, Washington, D. C., 938, 954.
- Schille, Alice,  
1166 Bryden Road, Columbus, Ohio,  
895, 896, 910, 911, 925, 926.
- Schoonover, Frank E.,  
1616 Rodney Street, Wilmington, Delaware,  
333, 855, 1063, 1064, 1066, 1067, 1068, 1069,  
1070, 1071, 1072, 1073, 1074.
- Schumo, Mabel,  
880 North Twenty-second Street, Philadelphia,  
724, 732, 867.
- Schwab, Edith F.,  
310 Prospect Street, New Haven, Connecticut,  
976, 977.
- Sears, Taber,  
96 Fifth Avenue, New York City, 463, 465, 466,  
482, 483, 484.
- Senseney, George,  
12 Rue du Pont Neuf, Moret-sur-Loing, France,  
247, 269.
- Server, C. William,  
903 Walnut Street, Philadelphia, 672.
- Shannon, Charles,  
care of P. and D. Colnaghi and Obach, 168 New  
Bond Street, London, 160, 161, 162, 163, 164,  
165, 166, 167, 168, 169.
- Sherwood, Rosina Emmet,  
251 Lexington Avenue, New York City, 858, 866.

INDEX.

- Short, Sir Frank,  
56 Brooke Greene, W., London, 235, 237, 246.
- Sibley, Ferol,  
103 W. Patterson Avenue, Columbus, Ohio,  
685, 857.
- Silsbee, Martha,  
115 Marlboro Street, Boston, 744, 751, 755.
- Silva, William P.,  
1326 New York Avenue, Washington, D. C.,  
843, 961.
- Silvis, Caroline,  
Rosemont, Pennsylvania, 1022.
- Sloan, Marianna,  
Fort Washington, Pennsylvania, 340, 417, 762,  
766, 779, 833.
- Smith, Howard,  
9 East Seventeenth Street, New York City, 810.
- Smith, Jessie Willcox,  
"Cogslea," Allen Lane, Philadelphia, 231, 233,  
234, 240, 241, 1024, 1026, 1027, 1028.
- Smith, J. Andre,  
103 Park Avenue, New York City, 666.
- Smith, Letta Crapo,  
789 Jefferson Avenue, Detroit, 962.
- Smith, Moore,  
172 Elm Avenue, Mt. Vernon, New York, 747.
- Smith, Wuanita,  
1919 Wallace Street, Philadelphia, 1030.
- Sonn, Albert H.,  
89 Sherman Place, Jersey City, New Jersey, 851.
- Spoerl, Christian George,  
325 Pine Street, Philadelphia, 776.
- Squire, Maud H.,  
39 Boulevard St. Jacques, Paris, 362, 363, 367,  
368, 606.
- Steinlen, Theophile,  
care of Goupil Gallery, 5 Regent Street, London,  
46, 53.



INDEX.

---

- Stevens, Dorothy,  
care of M. B. Titcomb, Copley Hall, Boston,  
611—A, B, C, D, 614, 615.
- Stevens, Will H.,  
Vevay, Indiana, 887, 956.
- Stone, Cornelia Perrin,  
Newburyport, Massachusetts, 722.
- Straus, M. M.,  
96 Fifth Avenue, New York City, 302, 306.
- Sturtevant, Helena,  
Newport, Rhode Island, 352, 604, 865.
- Sturtevant, Louisa C.,  
Second Beach Road, Newport, Rhode Island,  
357.
- Sullivan, E. J.,  
18 Hill Road, St. John's Wood, N. W., London,  
138, 140, 142.
- Swan, John M., Deceased,  
273, 274, 281, 705.
- Sykes, Anne G.,  
3007 Vernon Place, Cincinnati, 689, 693.
- Taylor, F. Walter,  
1012 Walnut Street, Philadelphia, 257, 259, 260,  
261.
- Tewksbury, Fanny Wallace,  
67 Harvard Street, Newtonville, Massachusetts,  
846.
- Tiffany, Louis C.,  
27 West Seventy-second Street, New York  
City, 862.
- Tobin, George T.,  
504 West One Hundred and Forty-third Street,  
New York City, 838.
- Trego, Edward Comly,  
Jenkintown, Pennsylvania, 1075.
- Treidler, Adolph,  
care of Collier's Weekly, 416 West Thirteenth  
Street, New York City, 1015

INDEX.

---

- Turner, Helen M.,  
207 East Seventeenth Street, New York City,  
360, 361, 364, 369.
- Van's Gravesande, Charles Storm,  
48 Jan van Nassau Street, The Hague, Holland,  
62, 65, 260.
- Van Westrum, Anni,  
409 W. Maple Avenue, Merchantville, New Jer-  
sey, 619, 897.
- Volkert, Edward C.,  
Williamsbridge, New York City, 733.
- Von Bartels, Hans,  
Pettenkofer strasse 39, Munich, 436, 506, 510,  
513, 854, 966.
- Von Herkomer, Sir Hubert,  
Lululaund, Bushey, Herts, England, 34, 45, 131,  
228.
- Wagner, Fred,  
235 S. Camac Street, Philadelphia, 433, 884,  
885, 890, 891, 929, 930, 932, 933, 935, 936.
- Wall, A. Bryan,  
44 Arch Street, Pittsburgh, 821.
- Walter, Martha,  
15 West Sixty-seventh Street, New York City,  
859.
- Walton, William,  
360 West Twenty-seventh Street, New York  
City, 631, 633.
- Ward, Mabel R.,  
215 West One Hundred and First Street, New  
York City, 613.
- Warner, Everett L.,  
146 West Fifty-fifth Street, New York City,  
665—A, B, C, D, E, F, 748, 756.
- Warren, Harold B.,  
4 Milton Road, Brookline, Massachusetts, 524,  
528.

INDEX.

---

- Watmough, Marjorie Ellen,  
43 South Eighteenth Street, Philadelphia, 660,  
1010, 1011, 1012.
- Watson, Agnes M.,  
126 South Eighteenth Street, Philadelphia, 860.
- Watson, Charles J.,  
19 Girdlers Road, Brook Green, W., London,  
7, 189.
- Way, Thomas R.,  
110 Regents Park Road, Primrose Hill, N. W.,  
London, 152, 195, 215, 216, 217, 219, 220.
- Wehrschmidt, Daniel A.,  
6a Holhein Place, Sloane Square, London,  
S. W., 56, 58, 66, 68.
- Weill, Edmond,  
309 Cornelia Street, Brooklyn, New York, 888.
- Welsh, H. Devitt,  
1432 South Penn Square, Philadelphia, 250,  
271, 272, 675, 676.
- West, Louise,  
"The Montreal," Baltimore, 975.
- Wetherill, E. K. Kent,  
1118 Forty-ninth Street, Brooklyn, 623—A, B.
- Whistler, J. McNeill, Deceased,  
192, 193, 194, 196, 197, 218.
- White, Henry C.,  
1034 Prospect Avenue, Hartford, Connecticut,  
902, 903.
- Whiteman, S. Edwin,  
Mount Washington, Maryland, 428.
- Whiteside, Frank Reed,  
Wyncote, Pennsylvania, 525, 529, 625, 746, 905.
- Wilder, Arthur B.,  
Woodstock, Vermont, 973.

INDEX.

---

- Williams, Adele,  
1009 West Avenue, Richmond, Virginia, 740,  
760.
- Williams, J. Scott,  
care of Collier's Weekly, 416 West Thirteenth  
Street, New York City, 370, 371.
- Wingert, E. O.,  
Willow and Wakeling Streets, Philadelphia, 773.
- Wood, William S.,  
1717 Land Title Building, Philadelphia, 939,  
940, 948.
- Wright, Charles H.,  
Beechmont, New Rochelle, New York, 788.
- Wyeth, N. C.,  
Chadds Ford, Pennsylvania, 1006, 1044.
- Yohn, Frederick C.,  
106 East Twenty-third Street, New York City,  
1045, 1047.
- Yoshida, H.,  
care of Pacific Art Association, Tokio, Japan,  
649, 651.
- Young, Mahonri M.,  
2231 Broadway, New York City, 708, 1060.
- Zimmerman, M. W.,  
235 South Camac Street, Philadelphia, 886,  
889, 892, 946.

—Macbeth Gallery—

Paintings by  
American Artists

Announcements of Special Exhibitions will be mailed on request

*Small Bronzes and Volkmar Pottery*



William Macbeth

405 Fifth Avenue

New York

---

---

**TO PICTURE-LOVERS**

---

---

**I**F you are interested in pictures we wish you would visit our galleries with the same freedom as you would the Academy of the Fine Arts.

We have a representative collection of the best things in the artistic world,—of paintings, water-colors, engravings, etchings, prints in colors. As members of the British Print Sellers' Association we offer the latest publications on the day that they appear in London.

In addition to the modern school we have old prints and etchings of great variety and beauty; French line-engravings; English color-prints after George Morland; old copper-plates by Dürer; etchings by Rembrandt.

---

---

**THE ROSENBACH GALLERIES**

1320 WALNUT STREET

J. B. LIPPINCOTT CO.

PUBLISHERS, PRINTERS,  
AND BOOKBINDERS

227-231 SOUTH SIXTH STREET

---

---



PROGRAMMES AND CATA-  
LOGUES ::: GENEALOGICAL  
AND HISTORICAL PUBLICA-  
TIONS FOR GENERAL OR  
PRIVATE DISTRIBUTION  
FINE LEATHER BINDINGS

---

---

PUBLISHERS OF

Lippincott's Monthly Magazine

227 SOUTH SIXTH ST., PHILADELPHIA

Telephone, Lombard 4100

# The Pennsylvania Academy —of the Fine Arts—

SCHOOLS OF  
PAINTING                      SCULPTURE  
DRAWING                      ILLUSTRATION

## *Faculty*

THOMAS P. ANSHUTZ	CECILIA BEAUX, LL.D.
GEORGE McCLELLAN, M.D.	FRANK MILES DAY
CHARLES GRAFLY	HENRY McCARTER
HUGH H. BRECKENRIDGE	JOSEPH T. PEARSON, JR.
DANIEL GARBER	

Broad and Cherry Streets, Philadelphia

*A Circular of information will be mailed upon request*



“Made in Holland”

## Rembrandt Colors

**N**OTED for their unusual  
brilliancy, permanence  
and easy working qualities.  
Used by many famous  
American and European  
artists, whose testimonials  
are at your disposal.

Ask your dealer. Write for Color Book

**TALENS & SON**, American Branch, IRVINGTON, N. J.

# DIARIES FOR 1912

YEO & LUKENS CO.

Stationery, Blank Books, Printing  
Law and Conveyancing Blanks

23 N. 13th STREET

631 WALNUT STREET

Card Index and Loose Leaf Specialties

ST. LOUIS, MO.

BALTIMORE, MD.

## F. WEBER & CO.

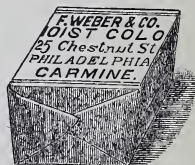
Manufacturers, Importers, and Dealers in  
*Artists' Materials and Drawing Supplies*

1125 Chestnut Street, Philadelphia



Use F. Weber & Co.'s world-renowned Artists' Oil and Moist Water-colors.

Sole agents for the United States for the celebrated "Fabriano" Hand-made Drawing Papers. *Superior in quality to any other hand-made paper on the market. Prices lower.*



Most complete line of Tapestry Painting and Stencil Materials, Pyrography and Brass Craft.

## J. WOLFF, JR.

Florist

1617 N. 19th STREET, PHILADELPHIA

Branch Store and Greenhouses  
SEDGLEY AVE. and 28th ST.

Both Phones



# HAESLER PORTRAITS

*High-class Photographic Work*

*The Negatives used for the Half-Tone Reproductions in this Catalog are from the Haeseler Studios*

Oil Paintings, Water-colors, Statuary, Old Prints, etc., accurately Photographed and faithfully Reproduced.

Old Photographs and Daguerreotypes Copied and Enlarged.

**Haeseler Photographic Studios** 1513 Walnut Street

**S**END FOR OUR BOOKLET ENTITLED "SOME FACTS YOU SHOULD KNOW ABOUT COAL" AND YOU WILL UNDERSTAND WHY YOU ONLY RECEIVE THE BEST FROM

**G. W. Edmonds & Co.**

NINTH and BERKS STREETS

FOUR YARDS { Ninth and Berks Streets  
Tasker Street Wharf  
Ridge Ave. and Noble  
49th and Grays Ave.

SKYLIGHTS

Established 1879

CORNICES

**J. S. Thorn Company**

ARCHITECTURAL SHEET METAL WORKS  
METAL WINDOW FRAMES AND SASH

20TH AND ALLEGHENY AVE., PHILADELPHIA

Ventilating Machinery  
Corrugated Iron Roofs and Siding

Sheet Metal Building Trimmings  
of all Kinds

# WINDOW GLASS

## PLATE GLASS

Best Brands American Window Glass, French Window Glass, German Looking-Glass Plates, Ornamental and Skylight Glass.

Greenhouse Glass, Glass for Conservatories

### BENJAMIN H. SHOEMAKER

205, 207, and 209 NORTH FOURTH STREET  
PHILADELPHIA, PENNA.

## GUARANTEE STORAGE COMPANY

BELL  
PHONE  
Poplar  
2154

KEY-  
STONE  
Park  
4939D



Storing  
Moving  
Packing  
Shipping

### 1317 & 1319 BROWN ST.

PHILADELPHIA

PENNA.

COLLECTING AND FORWARDING FOR  
EXHIBITIONS A SPECIALTY

Packers, Shippers, and Removers of  
Paintings, Bric-a-Brac, Furniture,  
Etc.  
Telephone  
Connection, 120 Columbus

New York Agents for The  
Pennsylvania Academy  
of the Fine Arts

Excellent  
References  
Cheerfully Furnished

W. S. BUDWORTH & SON

ESTABLISHED 1867  
Pictures, etc., received,  
delivered to, and returned from, all  
NEW YORK CITY EXHIBITIONS  
424 WEST 52nd STREET, NEW YORK.

DILL & COLLINS CO.'S



HIGH-GRADE PRINTING PAPERS

HAVE EARNED FOR THEMSELVES THE REPUTATION  
OF BEING THE

BEST MADE

WITH AND WITHOUT A COATED SURFACE  
FOR CATALOGUES, FOLDERS, BOOKS, AND ALL  
ARTISTIC ADVERTISING MATTER

CORRESPONDENCE SOLICITED AND INTELLIGENTLY  
ANSWERED

DILL & COLLINS CO.

PAPER-MAKERS

PHILADELPHIA

N. B.—THE PAPER USED IN THIS CATALOGUE WAS MADE  
BY THIS COMPANY

# The Plastic Club

## Exhibition

of a Loan Collection of the  
Works of

Maxfield Parrish

November 5th to November 17th,  
1911



## Annual Exhibition

of Illustrations, Originals  
and Reproductions

December 1st to December 29th,  
1911

247-249 South Camac St.  
PHILADELPHIA : PENNSYLVANIA

## A. SARTORIUS & COMPANY

Artists' Colors and Material

Send for Illustrated Catalogue and for Circular describing

A. SARTORIUS & CO.'S  
MOIST OLEO COLORS  
(Water Colors)

45 MURRAY STREET :: NEW YORK

## WINSOR & NEWTON'S

(OF LONDON, ENGLAND)

Oil and Water Colors Have Stood the Test  
for 80 Years

THE WORLD OVER

By the Best Artists

Everything manufactured by us is of the First Quality—  
Oil Colors, Water Colors, Brushes, Oils, Vehicles, Varnishes  
and Mediums.

### CANVAS

The Winton, Best Artists, British, Kensington and School  
of Arts. All Sizes.

WINSOR & NEWTON, Ltd.

298 BROADWAY :: NEW YORK

Cable Address, Vangrift  
A B C Code Used

Publishers Vandegrift's U. S. Tariff  
Telephone 1717 L.

*F. B. Vandegrift & Co.*

Custom Brokers and General Forwarders

IMPORT FREIGHT AGENTS

Philadelphia and Reading Railway Company

*Philadelphia: 50 South Fourth Street*

New York, 25 Whitehall St.

Chicago, 315 Dearborn St.

# ART and PROGRESS

A Monthly Illustrated Magazine

PUBLISHED BY  
THE AMERICAN FEDERATION OF ARTS  
1741 NEW YORK AVENUE, WASHINGTON, D. C.

---

## REGULAR FEATURES

SHORT ARTICLES BY AUTHORITATIVE WRITERS  
REVIEWS OF EXHIBITIONS AND BOOKS  
NEWS NOTES AND EDITORIAL COMMENT  
BULLETIN OF EXHIBITIONS AND CONVENTIONS

---

**THE BEST WRITERS**  
**BEAUTIFUL ILLUSTRATIONS**  
**GOOD READING**

---

Among the contributors are : CHARLES H. CAFFIN, ROYAL CORTISSOZ, ELISABETH LUTHER CARY, CLAYTON HAMILTON, FRANK JEWETT MATHER, JR., A. E. GALLATIN, SIR ALFRED EAST, MONTGOMERY SCHUYLER, JAMES BARNES, GLENN BROWN, MAUD HOWE, WILLIAM H. DOWNES, and CHARLES MULFORD ROBINSON.

---

**Subscription Price - - \$1.50 a year**

# Lindsay's Galleries

926 WALNUT STREET

American and Foreign Paintings,  
Water-Colors, and Prints

FRAMING A SPECIALTY



# THE BECK ENGRAVING COMPANY



620-Sansom Street  
Designs and Engraving in  
Black & White and Color for  
all purposes of Illustration

*"ITS PURITY HAS MADE IT FAMOUS"*

Both  
Phones



**GREAT BEAR**  
Spring Water

Naturally  
Pure  
NOT  
"Purified"

Springs—On reforested tract of 450 acres (325,000 trees) set apart for protection of watershed  
Offices and Warehouse: Chestnut and 31st Streets, Philadelphia

SCOTT & FOWLES CO.

*High-Class Paintings*

ALWAYS ON VIEW AT THEIR GALLERIES

590 Fifth Ave., NEW YORK CITY

STATON BROTHERS  
STATIONERY AND ART SHOP



MEZZOTINTS

after

by

REYNOLDS REMBRANDT EDWARDS GULLAND  
ROMNEY NATTIER STEVENSON SKRIMSHIRE

ORIGINAL ETCHINGS

by HAIG, WALKER, AFFLECK

*Hand-carved Frames Specially Designed for Mezzotints,  
Etchings, and Paintings*



5402-04 Germantown Avenue  
PHILADELPHIA





# ANNUAL MEMBERSHIP

IN

## THE PENNSYLVANIA ACADEMY OF THE FINE ARTS

Annual members are such persons as contribute \$10 annually for the maintenance of the Academy.

### LIFE MEMBERSHIP

Life members are those who contribute the sum of \$100.

Annual and life members are admitted to all the public exhibitions and lectures at the Academy, have a right to use its library, subject to the regulations of the institution, and receive an admission ticket. They have all the privileges of stockholders except the right to vote.

Checks may be sent to George H. McFadden, Treasurer, at the Academy.

---

---

### FORM OF BEQUEST

*I give, devise and bequeath to "The Pennsylvania Academy of the Fine Arts".....  
Dollars in trust to invest and keep invested and  
apply the income only to the maintenance of the  
said Academy.*