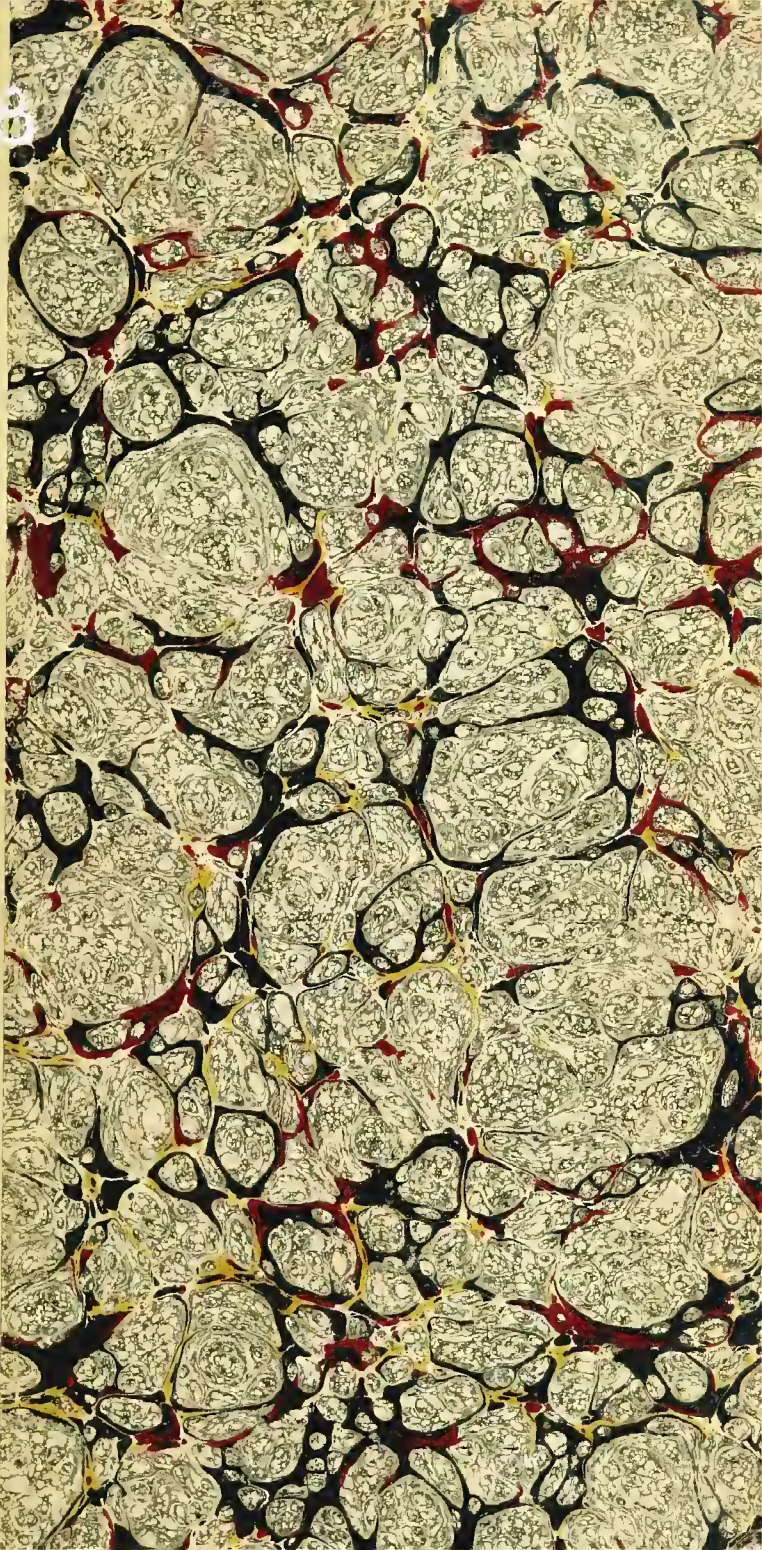


ACC 1028



RNELL  
ERSITY  
RARY

2771 1032  
Z  
6028  
C15A2  
The date shows when this volume was taken.

**HOME USE RULES.**

Books not needed for instruction or research are returnable within 4 weeks.

Volumes of periodicals and of pamphlets are held in the library as much as possible. For special purposes they are given out for a limited time.

Borrowers should not use their library privileges for the benefit of other persons.

Books not needed during recess periods should be returned to the library, or arrangements made for their return during borrower's absence, if wanted.

Books needed by more than one person are held on the reserve list.

Books of special value and gift books, when the giver wishes it, are not allowed to circulate.

|        |
|--------|
| Cor:   |
| Califo |
|        |
|        |
| A.200  |

# CALIFORNIA STATE LIBRARY.

NOVEMBER, 1899.

SPECIAL BULLETIN NO. 1.

## LIST OF PRINTED MAPS

CONTAINED IN THE

## MAP DEPARTMENT.



SACRAMENTO:

A. J. JOHNSTON : : : SUPERINTENDENT STATE PRINTING.

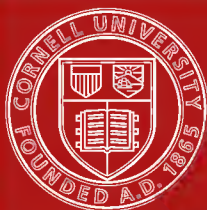
1899.

Cornell University Library  
Z6028.C15 A2

List of printed maps contained in the ma



3 1924 029 591 264



## Cornell University Library

The original of this book is in  
the Cornell University Library.

There are no known copyright restrictions in  
the United States on the use of the text.

# CALIFORNIA STATE LIBRARY.

NOVEMBER, 1899.

SPECIAL BULLETIN NO. 1.

LIST OF

# PRINTED MAPS

CONTAINED IN THE

# MAP DEPARTMENT.



SACRAMENTO:

A. J. JOHNSTON : : SUPERINTENDENT STATE PRINTING.  
1899.

A.200451

## PREFACE.

---

The Board of State Library Trustees have authorized the publication of a series of bulletins.

Beginning with a catalogue of the Map Department, we will publish:—

Finding List of the Unclassified Art and Miscellaneous Books, 2d ed.

Genealogy.

Town and County Histories.

List of Newspapers and Periodicals.

Drama.

Contents of other bulletins to be determined later.

The following bulletin was intended to serve as a finding list of the Map Department, but judging it to be of sufficient value to distribute, we publish it as Special Bulletin No. 1.

Our chief aim has been to secure and preserve all the California county and sectional maps possible, together with such maps of other states and countries as are found necessary.

J. L. GILLIS,  
*State Librarian.*

SACRAMENTO, November, 1899.

## ARRANGEMENT.

---

Maps are arranged chronologically under the following divisions, viz:—

|                       |                          |
|-----------------------|--------------------------|
| THE EARTH.            | UNITED STATES:           |
| EUROPE.               | GENERAL.                 |
| ASIA.                 | PACIFIC STATES.          |
| AFRICA.               | SINGLE STATES, EXC. CAL. |
| SOUTH AMERICA.        | CALIFORNIA:              |
| OCEANICA.             | GENERAL.                 |
| AUSTRALASIA.          | CENTRAL CALIFORNIA.      |
| NORTH AMERICA:        | SOUTHERN CALIFORNIA.     |
| GENERAL.              | SINGLE COUNTIES.         |
| COUNTRIES, EXC. U. S. |                          |

Scale is denoted in statute miles, unless otherwise noted.



# LIST OF PRINTED MAPS.

---

## THE EARTH.

1886. Chart of the world on Mercator's projection, constructed by Hermann Berghaus. Gotha, 1886. [No scale.]
1888. Map showing the location of the diplomatic and consular offices of the U. S., Mar. 1, 1888. Wash., 1888. F.
1888. Tunison's historical, county, railroad, distance, and index map of the world. H. C. Tunison, publisher, [1888]. Scale 50 m. to 1 in.
1896. Rand, McNally & Co.'s library map of the world on Mercator's projection, showing the latest discoveries and every place of commercial importance, [etc.]. Chic., 1896. [No scale.]
1899. New commercial and library map of the world, showing all late political and geographical changes, ocean currents, steamship and cable lines, railroads, and most important cities. Pub. by George F. Cram. N. Y., [c. 1899]. [No scale.]
1899. Rand, McNally & Co.'s universal wall map; showing maps of all continents, special maps of new United States territory, and other maps of general interest. [No scale. 1899.]

### Eastern Hemisphere.

1887. Rand, McNally & Co.'s map of the eastern hemisphere. Educational series. Chic., 1887. (*In case.*)

### Western Hemisphere.

1887. Rand, McNally & Co.'s map of the western hemisphere. Educational series. Chic., 1887. (*In case.*)

## EUROPE.

### General.

1886. Stanford's library map of Europe; constructed by A. Keith Johnston. Lond., 1886. Scale 50 m. to 1 in.
1887. Rand, McNally & Co.'s map of Europe. Educational series. Chic., 1887. Scale [about 85 m. to 1 in.].  
(*In case.*)

### Austria-Hungary.

1885. Karte des Oesterreichisch-Ungarischen Reiches von Joseph Ritter von Scheda, Kaiserl: Königl: Oberst. Verlag u. Eigenthum v. Artaria & Comp: in Wien, 1885. Scale 15 $\frac{3}{4}$  m. to 1 in.

### Belgium.

1884. Carte de la Belgique. Institut cartographique militaire, 1884. Scale 1:160,000.

### Crimea.

1816. Topographical map of the Krima peninsula, constructed and founded on most recent astronomical observations, verified and completed from authentic military surveys by Major-General Mukhin in the year 1816. Engraved and printed in the year 1817. (10 sheets.)

### Denmark.

*See SWEDEN, DENMARK, AND NORWAY.*

### England.

1878. *London.* Metropolitan medical relief map of London. Lond., 1878. folded. O.

### England and Wales.

1882. Stanford's library map of England and Wales. Constructed on the basis of the ordnance survey and the census. Lond., 1882. Scale 6 m. to 1 in.

### France.

1876. *Département de l'Hérault.* Carte géologique et minéralogique, arrondissement de Béziers; dressée conformément au voeu du conseil général, par Paul De Rouville en collaboration avec Émilien Dumas. Paris, 1876. Eschelles métriques 1:80,000.

**EUROPE—Continued.****France—Continued.**

1876. *Département de l'Hérault*. Carte géologique et minéralogique, arrondissement de Lodève; dressée conformément au voeu du conseil général, par Paul De Rouville. Paris, 1876. Eschelles métriques 1:80,000.
1876. *Département de l'Hérault*. Carte géologique et minéralogique, arrondissement de Montpellier; dressée conformément au voeu du conseil général, par Paul de Rouville. Paris, 1876. Eschelles métriques 1:80,000.
1876. *Département de l'Hérault*. Carte géologique et minéralogique, arrondissement de St. Pons; dressée conformément au voeu du conseil général, par Paul de Rouville. Paris, 1876. Eschelles métriques 1:80,000.
1882. Carte orographique, hydrographique et routière de la France. Réduite de la nouvelle carte de France de l'état-major dressée au Dépôt de la Guerre. Publié par E. Andriveau-Goujon. Paris, 1889. Scale 1:1,068,375.
- [no date.] *Paris*. Nouveau plan de Paris, divisé en 20 arrondissements dans un rayon de 10 kilometres. Publié par Aug. Logerot. [No scale. Size about 26 x 40 in.] folded. D.

**German Empire.**

1888. Wandkarte des Deutschen Reiches, bearbeitet von Heinrich Kiepert. 8. Aufl. Revision von Richard Kiepert. Berlin, 1888. Scale 1:750,000.

**Greece.**

1855. Topographical map of Greece, Turkey in Europe, the Archipelago, and part of Asia Minor, from the original map by F. von Weiss. Reproduced by T. B. Jervis. Lond., 1855. (Sheets 1-6, 13-21.)
1885. General Karte des Königreiches Griechenland. Nach Berichtigungs-Daten des k. griech. Oberstlieutenants J. Kokides und revidirt von Dr. H. Kiepert. Bearbeitet von K. K. Militär-Geographischen Institute in Wien. Wien, 1885. Scale 1:300,000.

**EUROPE—Continued.****Ireland.**

1860. Escheated counties; zincographed at the ordnance survey office Southampton, under the direction of A. C. Scott, and Sir H. James, superintendent; certified to be fac-simile by Henry James. [1860. n.t.p.] F.
1886. General map of Ireland. Ordnance survey. New ed., [1886]. Scale 4 m. to 1 in.

**Italy.**

1888. Disegnata da Carlo Cerri. Ditta editrice Artaria di Ferd. Sacchi e Figli. Milano, 1888. Scale 1:864,000.
- 1893-99. *Rome*. Forma urbis Romæ: consilio et auctoritate Regiæ Academiæ Lynceorum. Formam dimensus est et ad modulum 1:1,000 delineavit R. Lanciani. Fasciculus primus (1893)—Septimus (1899). Mediolani, 1893-1899. 42 sheets. 1-15, 17-20, 22-27, 29, 30, 33, 35-37, 39-46.

**Norway.**

See SWEDEN, DENMARK, AND NORWAY.

**Portugal.**

See SPAIN AND PORTUGAL.

**Russia.**

1882. Karte des Russischen Reichs in Europa, bearbeitet von H. Keipert. 5. Aufl. Berlin, 1882. Scale 1:3,000,000.

**Scotland.**

1883. Black's new large map of Scotland. Comp. from the ordnance, admiralty, and other surveys, by John Bartholomew. Edin., [1883]. Scale 4 m. to 1 in.

**Spain and Portugal.**

1889. Spanien und Portugal, von C. Vogel. Gotha, 1889. Scale 1:1,500,000.

**Sweden, Denmark, and Norway.**

1887. General karta öfver Sverige, Norge och Danmark, af August Hahr. Fünfte verbesserte Aufl. Stockholm, 1887. Scale 1:1,000,000.

**EUROPE—Continued.****Switzerland.**

[no date.] Karte der Schweiz; nach dem topographischen atlasse des eidgen össischen Generalstabes. Reduziert unter der Direction des G. H. Dufour. Scale 1:250,000.

**Turkey.**

[no date.] Map of Turkey in Europe. [n. imp. Size 32 x 72 in.] folded. F.

1898. Coloured map with tabular statement showing date of conquest and period of subjection of various Turkish dependencies, by A. Pant. Pub. by G. Philip & Son. Lond., [1898]. folded. D. Scale 200 m. to 1 in.

*See also* GREECE.

**ASIA.****General.**

1882. Stanford's library map of Asia. Constructed by A. Keith Johnston. Lond., 1882. Scale 110 m. to 1 in.

1886. Rand, McNally & Co.'s map of Asia. Educational series. Chic., 1886. Scale [about 160 m. to 1 in.]. (*In case.*)

**Bokhara.**

1843. Map of the Khanate of Bokhara, and a portion of the Kirghiz steppes. Prepared by Col. Baron Meyendorff. Lond., 1843. [No scale.]

**Bombay.**

1843. The Island of Bombay, reduced from the original survey by Capt. Thomas Dickinson, 1812-16. Lond., 1843. Scale 1,200 yds. to 1 in.

**China.**

1898. "Daily Mail" commercial map of China, showing the railway concessions, coal fields, iron mines, navigable waterways and steamship routes. Lond., [1898]. folded. D. [No scale.]

1898. Philip's special map of the Chinese Empire and Japan, showing the recent railway concessions. Lond., [1898]. folded. D. Scale 130 m. to 1 in.

**ASIA—Continued.****India.**

1889. Map of India, shewing the British territories, subdivided into collectorates and including British Burmah. Chiefly comp. from trigonometrical surveys by John Walker. Pub. by W: H. Allen & Co. Lond., 1889. Scale 32 m. to 1 in.

**Japan.**

- [no date.] [No scale. 39 x 69 in.] folded. Q. .
- [no date.] Map of the silk district, [Japan. No scale. 56 x 64 in.] folded. Q.
1879. Stanford's library map of Japan. Principally compiled from Japanese documents by E. Knipping. Lond., 1879. Scale 17.6 m. to 1 in.
1898. Philip's special map of the Chinese Empire and Japan, showing the recent railway concessions. Lond., 1898. folded. D. Scale 130 m. to 1 in.

**Turkey in Asia.**

1884. Nouvelle carte générale des provinces Asiatiques de l'empire Ottoman (sans l'Arabie). Dressée par Henri Kiepert. Dietrich Reimer, éd. Berlin, 1884. Scale [about] 25 m. to 1 in.

**Yedo.**

- [no date.] Map of Yedo. [No scale. 44 x 49 in.] folded. Q.

**AFRICA.****General.**

1886. Rand, McNally & Co.'s map of Africa. Educational series. Chic., 1886. Scale [about 150 m. to 1 in.] (*In case.*) .
1887. Spezial-Karte von Afrika. Entworfen von Hermann Habenicht, bearbeitet von demselben, Bruno Domann und Dr. Richard Lüddecke. 2. Aufl. Gotha, 1887. Scale 1:4,000,000.
1898. Philip's special map of Africa, showing treaty boundaries. Lond., [1898]. folded. D. Scale 266 m. to 1 in.

**AFRICA—Continued.****Abyssinia.**

1887. Carta dimostrativa della regione compresa fra Massaua, Keren, Aksum e Adigrat. Institute Geografico Militaire, 1887. Scale 1:250,000.

**Egypt.**

1898. Philip's special map of the Nile, illustrating the advance on Khartum, with the enlargement of the environs of Omdurman and a general map of the Nile valley. Lond., [1898]. folded. D. Scale 100 m. to 1 in.

**SOUTH AMERICA.****General.**

1881. Stanford's library map of South America; constructed by A. Keith Johnston. Lond., 1881. Scale 83.25 m. to 1 in.
1886. Rand, McNally & Co.'s map of South America. Educational series. Chic., 1886. Scale [about 120 m. to 1 in.]. (*In case.*)

**Argentine Republic.**

- [no date.] Mapa general de la República Argentina y parte de las naciones circunvecinas. Formado bajo la direccion de Mariano Felipe Paz Soldan. Publicado por Felix Lajouane. Buenos-Aires. Scale 1:3,000,000.

**OCEANICA.**

1897. Rand, McNally & Co.'s hydrographic map of the Pacific Ocean, showing also Australia, Malaysia, Melanesia, Polynesia. Chic., [c. 1897]. Scale 350 m. to 1 in.

**AUSTRALASIA.****Australia.**

1885. Map of Australia. Constructed from the most recent official documents furnished by the surveyors-general and from the admiralty surveys. Pub. by Edward Stanford. Lond., 1885. Scale 26 m. to 1 in.

**AUSTRALASIA—Continued.****Victoria.**

- [no date.] Victoria, geologically colored. Alfred R. C. Selwyn, government geologist. Scale 8 m. to 1 in.
1872. Map of Victoria; constructed and engraved at the surveyor-general's office, Melbourne. 1872. Scale 8 m. to 1 in.
1872. *Same.* Colored.

**New Zealand.**

1881. Map of the Middle Island, New Zealand, shewing for the census of 1881 the density of population. Scale 50 m. to  $3\frac{1}{2}$  in.
1881. Map of North Island, New Zealand, shewing for the census of 1881 the density of population. Scale 50 m. to  $3\frac{1}{2}$  in.
1885. Map of New Zealand; constructed and engraved by W. & A. K. Johnston. Edin., 1885. Scale  $18\frac{1}{2}$  m. to 1 in.

**NORTH AMERICA.****General.**

1849. Map of North America, by J. Calvin Smith. [Includes map of the gold region of California.] Pub. by Sherman & Smith. N. Y., 1849. folded. T.
1855. Map of that portion of North America, exhibiting the United States and Territories, the Canadas, New Brunswick, Nova Scotia, and Mexico, also Central America and West India islands. Pub. by Jacob Monk. Balt., 1855. Scale 50 m. to 1 in.
1855. Northern America; British, Russian, and Danish possessions. Pub. by J. H. Colton. N. Y., [c. 1855]. Scale 300 m. to 1 in.
1886. Rand, McNally & Co.'s map of North America. Educational series. Chic., 1886. Scale [about 125 m. to 1 in]. (*In case.*)

**Canada: British Columbia.**

1858. Map showing the different routes of communication with the gold region on Frazer river. Comp. from original notes by Alexander C. Anderson. Pub. by J. J. LeCount. S. F., 1858. [Scale 18 m. to 1 in.] folded. T.



## NORTH AMERICA—Continued.

### Canada: British Columbia—Continued.

1858. Map of the gold regions of the Fraser river and the Washington territory of the western coast of America, by James Wyld. Lond., 1858. folded. S.
1858. Lewis' map of the Fraser river, showing the surrounding country and also the overland routes leading to it. Lith. and pub. by G. W. Lewis. N. Y., 1858. folded. T.
1897. Map of the west division of Kootenay district, and a portion of Lillooet, Yale, and East Kootenay. Comp. by direction of the Hon. G. B. Martin. Victoria, 1897. Scale 8 m. to 1 in.

### Canada: Klondyke.

1897. Map of the Klondyke, Cassiar, Omineca, and Cariboo gold fields, shewing routes. Victoria, 1897. Scale 140 m. to 1 in.

### Canada: Yukon.

1897. Map of the Canadian Yukon and Northern Territory of British Columbia. Comp. for yearbook of British Columbia. Victoria, 1897. 18 m. to 1 in.

*Note.*—In envelope to accompany yearbook of British Columbia.

### Central America.

- [no date.] Birdseye view of the interoceanic canal of Nicaragua and Costa Rica; comp. from official data by Fred'k Leuthner. [n.d.] Julius Bien & Co., lith., N. Y. [No scale.] Size 35 x 19½ in.
1888. Profile of the Nicaragua interoceanic ship canal, 1888. Julius Bien & Co., lith., N. Y. Scale 5½ m. to 1 in.

### Mexico.

- [no date.] Nuevo mapa de Mexico. Publicado por G. B. & C. W. Colton. N. Y., [n.d.]. Scale [about 37 m. to 1 in.]
1848. Mapa de los estados unidos de Mejico. J. Disturnell. N. Y., 1848. Scale 70 m. to 1 in.
1852. Isthmus of Tehauntepec. N. Y., 1852. folded. O.

## NORTH AMERICA—Continued.

## Mexico—Continued.

1864. Nueva mapa de los estados de Sonora, Chihuahua, Sinaloa, Durango, y territorio de la Baja California. Formado por E. de Fleury. Published by A. Gensoul. S. F., 1864. Scale [about 30 m. to 1 in.].
1882. Nueva mapa de Mexico. Pub. by G. W. Colton. N. Y., 1882. folded. D.
1882. Rand, McNally & Co.'s general map of the republic of Mexico, showing completed and proposed railways, steamship routes, and telegraphic communications. Chic., 1882; corrected to 1884. Scale [45 m. to 1 in.].
1882. Resources of the northwest coast of Mexico, presenting its mineral and agricultural lands, railroads, etc.; comp. by J. M. Robertson. S. F., 1882. folded map.
1884. Carta topografica central de los alrededores de Puebla. Secretaria de estado y del despacho de guerra y marina comision geografica de Fomento y Guerra. Bajo la direccion del Ing. A. Diaz. 3<sup>a</sup> ser. Letra A. P. Edicion de 1884. Grabado y imprimado por Erhard ho. Paris. Escala de 1:50,000-1<sup>mm</sup>-50 metros.
1889. Bosquejo de una carta geologica de la Republica Mexicana. Formada por disposicion del Secretario de Fomento, Gral. C. Pacheco, por una Comision especial. Bajo la direccion del profesor A. del Castillo, director de la escuela Nacional de Ingenieros. 1889. Grabado por Erhard ho. Paris. Escala de 3,000,000.
1891. *Same.* Reformada con nuevos datos en 1891. lit. Em. Moreau y ho. Mexico. Escala 1:10,000,000.
- [no date.] Carta agrologica. [n.d.] Gravée, chez Monroq fr. Paris. Escala de 1:3,000,000.
- [no date.] Carta agronomica: Algodon; Cafe; Maiz; Trigo. [n.d.] Gravée, chez Monroq fr. Paris. Escala de 1:3,000,000. (4 sheets.)
- [no date.] Carta altimetrica. [n.d.] Gravée, chez Monroq fr. Paris. Escala de 1:3,000,000.

**NORTH AMERICA—Continued.****Mexico—Continued.**

- [no date.] Carta climatologica. [n.d.] Gravée, chez Monroccq fr. Paris. Escala de 1:3,000,000.
- 1889-92. Carta de la republica Mexicana, a la 100,000<sup>a</sup>. Secretaria de estado y del despacho de fomento comision geografica de Guerra y Fomento. Bajo la direccion del Ing. A. Diaz. 1st ser. Hoja-19-1. M, N, O, S, T. Hoja-19-D. K, P, U, V. Hoja-19-IV. A. Publicada en 1889-92. Escala de 1:100,000-1<sup>mm</sup> 100 metros. (10 sheets.)
1890. Carta general de la Republica Mexicana. Formada en el ministerio de Fomento con los datos mas recientes por disposicion del Secretario del Ramo, Gral. C. Pacheco. 1890. Grabado por Erhard ho. Paris. Escala de 1:2,000,000.
- [no date.] Carta minera de la Republica. Formada por disposicion del Secretario de Fomento Gral. C. Pacheco, por el ingeniero de minas A. Del Castillo. Grabado por Erhard ho. Paris. [n.d.] Escala de 3,000,000.

**UNITED STATES.****General.**

- [no date.] Rand, McNally & Co.'s map of Canada, United States, and Mexico. Educational series. (*In case.*)
1851. A chart giving an ideal section of the successive geological formations, with an actual geological section from the Atlantic to the Pacific ocean; illustrated by characteristic fossils of each formation, by James Hall. Pub. by R. H. Pease. N. Y., [c. 1851]. Size 54 x 72 in.
1859. Dixon & Kasson's map of the overland and ocean mail routes between the Pacific and Atlantic states. Pub. by Hutchings & Rosenfeld. S. F., 1859. [Scale] 1:6,000,000. folded. T.
1865. Military map showing the marches of the military forces under command of Major-General W. T. Sherman, during the years 1863-65. Comp. under direction of W. L. B. Jenney. Drawn by William Kossak and John B. Muller. St. Louis, 1865. Scale 25 m. to 1 in.

**UNITED STATES—Continued.****General—Continued.**

1872. Map of the United States and Territories, showing the extent of public surveys and other details; constructed from plats and official sources of the general land office under the direction of Hon. J. S. Wilson, commissioner, by Joseph Gorlinski. 1872. J. Bien, lith. Scale [about 60 m. to 1 in.].
1873. Map of the United States and Territories, showing the extent of public surveys, Indian and military reservations, and other details. Comp. from the official surveys under the direction of Hon. Willis Drummond, commissioner. 1873. Scale 40 m. to 1 in.
1882. *Same*: 1882. Scale 40 m. to 1 in.
1876. Centennial map of the United States and Territories, showing the extent of public surveys, Indian and military reservations, land grant R. R., railroads, canals, cities, towns, and other details. Comp. from official surveys of the general land office under the direction of Hon. J. A. Williamson, commissioner; by C. Roeser, principal draughtsman. 1876. Scale 20 m. to 1 in.
1876. Williams' copper-plate map of the United States, Mexico, etc. Pub. by E. W. Smith & Co. Phil., [c. 1876. Scale 48 m. to 1 in.].
1880. Congressional district vote map of the United States, by F. B. Perkins. Bost., 1880. folded. S.
1880. Lubrecht's pictorial, county, railroad, and distance map of the United States and part of Canada. Pub. by Haasis & Lubrecht. N. Y., [c. 1880.] [Also illuminated steel-plate map of the world.]
1885. Houghton's historical map of the United States. Pub. by A. H. Andrews & Co. N. Y. and Chic., [1885].
1887. Rand, McNally & Co.'s map of the United States of America, with portions of the Dominion of Canada and of the Republic of Mexico. Chic., 1887. Scale 18 m. to 1 in.

---

**UNITED STATES—Continued.**
**General—Continued.**

1895. *Same*: 1895. Scale 45 m. to 1 in.
1896. *Same*: 1896. Scale 45 m. to 1 in.
1888. Statistical map of the United States. Prepared by James S. Cowdon and James D. Holman, under direction of Hon. John C. Black, commissioner of pensions. July, 1888.
1889. Two grand tours of the unique exhibit train known as California on Wheels under the auspices of the California State Board of Trade and the Southern Pacific Co. Lith. by H. S. Crocker & Co. S. F., 1889. [No scale.] folded. T.
1893. Map of the United States and Territories with adjacent parts of Canada and Mexico, also part of the West India islands; comp. from the official surveys of the general land office and other authentic sources, under the direction of S. W. Lamoreux. 1893. [n.p.] Scale 40 m. to 1 in.
- 1894-99. United States Geological Survey. Geologic atlas of the United States. Folios 1-51, 53. Wash., 1894-99. 52 folios.
- Contents*: 1. Livingston, Mont. 2. Ringgold, Ga., Tenn. 3. Placerville, Cal. 4. Kingston, Tenn. 5. Sacramento, Cal. 6. Chattanooga, Tenn. 7. Pike's Peak, Colo. 8. Sewanee, Tenn. 9. Crested Butte, Colo. 10. Harper's Ferry, Va., Md., West Va. 11. Jackson, Cal. 12. Estillville, Ky., Va., Tenn. 13. Fredricksburg, Va., Md. 14. Staunton, Va., West Va. 15. Lassen Peak, Cal. 16. Knoxville, Tenn. 17. Marysville, Cal. 18. Smartsville, Cal. 19. Stevenson, Ala., Ga., Tenn. 20. Cleveland, Tenn. 21. Pikeville, Tenn. 22. McMinnville, Tenn. 23. Nomini, Md., Va. 24. Three Forks, Mont. 25. Loudon, Tenn. 26. Pocahontas, Va., W. Va. 27. Morristown, Tenn. 28. Piedmont, W. Va., Md. 29. Nevada City, Cal. 30. Yellowstone Nat. Park. 31. Pyramid Peak, Cal. 32. Franklin, W. Va., Va. 33. Briceville, Tenn. 34. Buckhannon, W. Va. 35. Gadsen, Ala. 36. Pueblo, Colo. 37. Downieville, Cal. 38. Butte spec., Mont. 39. Truckee, Cal. 40. Wartburg, Tenn. 41. Sonora, Cal. 42. Nueces, Tex. 43. Bidwell Bar, Cal. 44. Tazewell, Va., W. Va. 45. Boise, Idaho. 46. Richmond, Ky. 47. London, Ky. 48. Tenmile Dist. spec., Colo. 49. Roseburg, Or. 50. Holyoke, Mass., Conn. 51. Big Trees, Cal. 53. Stand-  
ingstone, Tenn.

## UNITED STATES—Continued.

### General—Continued.

1899. Twentieth century commercial and library map of the United States, with all latest information from official sources. Pub. by George F. Cram. N. Y., [c. 1899]. [No scale.]

### Pacific States.

1864. Bancroft's map, of Oregon, Washington, Idaho, and British Columbia. Pub. by H. H. Bancroft & Co. S. F., 1864. Scale 24 m. to 1 in.
1864. Bancroft's map of the Pacific states. Comp. by W: H. Knight. Pub. by H. H. Bancroft & Co. S. F., 1864. Scale 24 m. to 1 in.
1873. *Same.* Scale 24 m. to 1 in.
1882. Northern Transcontinental Survey, R. Pumpelly, director. Maps: Colville region, Washington Ter.; Crazy mountains and vicinity, Montana Ter.; Judith basin, Montana Ter. [2 sheets]; Yakima region, Washington Ter. [2 sheets]. Lith. by J. Bien & Co. N. Y., 1882. Scale 2 m. to 1 in.
1883. Colton's new township map of the Pacific states and territories. N. Y., 1883. Scale 33 m. to 1 in.
- [no date.] New railroad and county map of the Pacific states and territories, and the Rocky mountain region. [n.d.] Scale 18 m. to 1 in.

### Alabama.

1851. Entrance to Mobile bay, from a trigonometrical survey under the direction of A. D. Bache, superintendent of the survey of the coast of the United States. 1851. Scale 1:40,000.

### Alaska.

1899. Post route map of the territory of Alaska, showing post offices, with the intermediate distances on mail routes in operation June 1, 1899. Pub. by order of P. M. Gen'l C: E. Smith; A. von Haake, topographer. 1899. Scale 40 m. to 1 in.

## UNITED STATES—Continued.

## California and Nevada.

1863. New map of the state of California and Nevada territory, exhibiting the rivers, lakes . . . . towns. . . . Also meridian, standard, range, and township lines . . . . added the county boundaries and U. S. land districts. Carefully compiled from the U. S. and other reliable surveys, by Leander Ransom and A. J. Doolittle. 1863. Pub. by W. Holt. Scale 24 m. to 1 in. folded. T.
1865. Topographical and railroad map of the central part of California and Nevada. Comp. from railroad, U. S. public land, U. S. coast, California state geological, and from reliable private surveys, and pub. by C. Bielawski, J. D. Hoffmann, and A. Poett. Britton & Co., lith. 1865. Scale 4 m. to 1 in.
1866. Map of public surveys in California and Nevada, to accompany the report of the commissioner of the general land office. 1866. Scale 18 m. to 1 in.
1866. *Same*: Folded. O.
1869. Map of the states of California and Nevada, carefully comp. from the latest authentic sources. California, by J. H. von Schmidt, A. W. Keddie, and C: D. Gibbes; Nevada, by C: D. Gibbes. Comprising information obtained from the U. S. coast and land surveys, state geological survey by J. D. Whitney, railroad surveys. Pub. by Warren Holt. S. F., 1869. Scale 12 m. to 1 in.
1873. Map of the states of California and Nevada, carefully comp. from the latest authentic sources, by C: D. Gibbes. . . . Pub. by Warren Holt. San Francisco, 1873. Scale 18 m. to 1 in.
1875. *Same*: 1875. Scale 18 m. to 1 in.
1888. *Same*: Pub. by S. B. Linton. Phil., 1888. Scale 12 m. to 1 in.
1874. Map of California and Nevada. State geological survey of California; J. D. Whitney, state geologist. Drawn by F. v. Leicht and A. Craven. 2d ed. Revised by Hoffmann and Crane, and issued by authority of the regents of the University of California, given May 12, 1874. 1874. Scale 18 m. to 1 in.

## UNITED STATES—Continued.

### California and Nevada—*Continued.*

1888. Rand, McNally & Co.'s standard map of California and Nevada. Chic., 1888. Scale 18 m. to 1 in.
1889. *Same*: 1889. Scale 18 m. to 1 in.
1895. New map of California and Nevada, comp. from the latest and most reliable official sources and special surveys. Pub. by Whitaker & Ray Co. S. F., 1895. Scale 12 m. to 1 in.,

*See also*, CALIFORNIA.

### Connecticut.

1851. Hart and City Island, from a survey under the direction of A. D. Bache, superintendent of the survey of the coast of the United States. 1851. Scale 1:20,000. [Also] Sachem's Head harbor. Scale 1:10,000.

### District of Columbia.

1852. Maps of the District of Columbia and city of Washington, and plats of the squares and lots of the city of Washington. Wash., 1852. folded. F.

### Georgia.

1875. Map 1[-5] illustrating the military operations of the Atlanta campaign, 1864. Comp. by authority of the Secretary of War in the office of the chief of engineers, U. S. A. 1875. Scale 1 m. to  $\frac{3}{4}$  in.
1875. Map illustrating the military operations in front of Atlanta, Ga., 1864. Comp. in the office of the chief of engineers, U. S. A. 1875. Scale 4 m. to 1 in.

### Idaho.

1882. Scott's pocket map of the new mining regions of Idaho, showing all the mining tributaries of the Wood river and of the upper Salmon and upper Boise rivers. Comp. by Frank J. Scott. N. Y., 1882. Scale 5 m. to 1 in.

### Illinois.

1891. *Chicago. World's Columbian Exposition, 1893.* Machinery Hall. Orcutt Co., lith. Chic., [1891]. Size 42 x 27 in.
1891. *Chicago. World's Columbian Exposition, 1893.* Official birdseye view of the World's Columbian Exposition, showing grounds and designs of the buildings; from the painting by C. Graham. Chic., [c. 1891]. Size 25 x 40 in.



## UNITED STATES—Continued.

**Maine.**

1851. Richmond's Island harbor, from a trigonometrical survey under the direction of A. D. Bache, superintendent of the survey of the coast of the United States. Pub. in 1851. Scale 1:20,000.

**Massachusetts.**

1895. *Boston Harbor*. Map showing the present depth of water in the channels resulting from dredging; shore line and soundings. Comp. from Mass. harbor commissioners and U. S. coast and geodetic survey. Bost., 1895. Scale 1400 ft. to 1 in. folded. D. (To accompany annual report of Harbor and Land Commissioners of Mass.)

[no date.] Map of the boundary between Massachusetts and New York, showing the ancient colonial and provincial grants and settlements, by Franklin Leonard Pope. [n.d. No scale. Size 14 x 17 in.] folded.

**Michigan.**

1890. Map of the state of Michigan, engraved and printed under the supervision of the commissioner of railroads, J: T. Rich. Pub. by Cram & Stebbins. Chic., 1890. [No scale.] folded. S.

**Montana.**

1886. Official map of the territory of Montana. Drawn for the use of the territorial schools by William P. Snow. 1886. Engraved by G. W. & C. B. Colton & Co., N. Y. Scale 15 m. to 1 in.
1888. New county, township, and railroad map of Montana. Rand, McNally & Co., pub. Chic., 1888. Scale 16 m. to 1 in.

**Nevada.**

1862. Bancroft's map of the Washoe silver region of Nevada territory. Pub. by H. H. Bancroft & Co. S. F., 1862. Scale 1 m. to 1 in. folded. T.
1863. DeGroot's map of Nevada territory, exhibiting a portion of southern Oregon and eastern California, with county boundaries, mining districts, railroad routes, wagon roads, etc. Pub. by W. Holt. S. F., 1863. Scale 12½ m. to 1 in. folded. T.

---

**UNITED STATES—Continued.**
**Nevada—Continued.**

- [no date.] DeGroot's map of the Washoe mines. Pub. by Hutchings & Rosenfeld, S. F. 2d ed. [Scale about 11 m. to 1 in.] folded. T.
1863. Topographical map of Reese river mines located in the vicinity of the town of Austin. Surveyed and drawn by G. F. Allardt. 1863. Lith. Britton & Co., S. F. Scale  $\frac{1}{4}$  m. to 1 in.
1863. Milleson & Washburn's map of the celebrated Humboldt silver mines; drawn by M. Milleson. Lith. by B. F. Butler. S. F., 1863. Scale  $1\frac{1}{2}$  in. per-mile. folded. S.
1868. Map of White Pine district, Lander county, showing the principal mines. S. F., 1868. Scale 2,000 ft. to 1 in. folded. T.
1869. Map and guide to the White Pine mines and the region of country adjacent. Comp. by Allen Cadwalader. S. F., 1869. Scale 4 m. to 1 in. folded. S.
1869. Map showing detailed topography of the country traversed by the reconnaissance expedition through southern and southeastern Nevada, in charge of Lieut. Geo. M. Wheeler. N. Y., 1869. Scale 12 m. to 1 in. folded. O.
1874. Map of the Comstock lode and the Washoe mining claims, embracing the districts of Virginia, Gold Hill, Devil's Gate, Silver Star, and Flowery in Storey and Lyon counties, Nevada. Comp. from official surveys made by T. D. Parkinson. Drawn by Ross E. Browne. [c.1874.] A. L. Bancroft & Co., lith. Scale 600 ft. to 1 in.
1874. Mining claims of the Comstock lode in their relative position. Comp. from actual surveys . . . by Robert H. Goodwin, C.E. Pub. by G. T. Brown & Co., S. F. 2d ed. [c. 1874.] Scale 800 ft. to 1 in.
1886. Map of the state of Nevada. Comp. by John W. Parker . . . from official maps and other reliable data. 1886. Scale 12 m. to 1 in.

**UNITED STATES—Continued.****Nevada—Continued.**

[no date.] The only correct and reliable map of the Washoe mining region. Designed and drawn by R. M. Evans. Britton & Co., lith. S. F., [n.d. Scale about 9 m. to 1 in.] folded. T.

[no date.] Skeleton map of the mines of Virginia City, by R. M. Evans. [n.d.] folded. S.

See also CALIFORNIA AND NEVADA.

**New York.**

1851. Hell Gate and its approaches, from a trigonometrical survey under the direction of F. R. Hassler and A. D. Bache, superintendents of the survey of the coast of the United States. Pub. in 1851. Scale 1:5,000.

1851. Western part of the southern coast of Long Island, from a trigonometrical survey under the direction of F. R. Hassler and A. D. Bache, superintendents of the survey of the coast of the United States. Pub. in 1851. Scale 1:80,000.

[no date.] Map of the boundary between Massachusetts and New York, showing the ancient colonial and provincial grants and settlements; by Franklin Leonard Pope. [n.d. No scale. Size 14 x 17 in.] folded. O.

**Ohio.**

1879. Geological map. N. Y., 1879. Scale 4 m. to 1 in.

**Oregon.**

1874. Habersham's sectional and county map of Oregon. Comp. from the most recent U. S. government maps and surveys. Pub. by J. G. Gill & Co. Portland, 1874. Scale 12 m. to 1 in.

1895. New railroad, township, and educational map of Oregon. Comp. and pub. by Punnett Bros. S. F., 1895. Scale  $6\frac{2}{3}$  m. to 1 in.

**Pennsylvania.**

1876. Map of the battlefield of Gettysburg, 1863. Published by authority of the Secretary of War. Bost., 1876. Scale 1,000 ft. to 1 in. (3 sheets, 1st-3d day.)

1890. Railroad map of Pennsylvania; pub. by the Department of Internal Affairs of Pennsylvania; drawn and comp. by J. S. Wall. [Harrisburg], 1890. Scale 6 m. to 1 in.

---

**UNITED STATES—Continued.**
**Rhode Island.**

1855. Map of the state of Rhode Island and Providence Plantations; by Henry F. Walling. 1855. Scale 1 m. to 1 in. folded. O.

**South Dakota.**

1890. Rand, McNally & Co.'s new sectional map of South Dakota. Chic., 1890. Scale 8 m. to 1 in.

**Tennessee.**

1874. Battlefield in front of Franklin, Tenn., where the U. S. forces under command of Maj. Gen'l J. M. Schofield severely repulsed the Confederate army, commanded by Lt. Gen'l Hood, Nov. 30, 1864. Published by authority of the Secretary of War. 1874. Scale 1 m. to 6 in.
1875. Map of the battlefield of Chattanooga, 1864. Published by authority of the Secretary of War. 1875. Scale 1 m to  $2\frac{5}{8}$  in.
- 1896-7. *Chickamauga and Chattanooga*. Atlas of the battlefields of Chickamauga and Chattanooga and vicinity; prepared under the direction of D. S. Lamont and R. A. Alger by the Chickamauga and Chattanooga National Park Commission. Wash., 1896-7. J. Bien, lith. 7 pl. F.
- [no date.] Topographical map of the approaches and defenses of Knoxville, Tenn., during the siege, 1863-64. Published by authority of the Secretary of War. Scale 1 m. to  $6\frac{3}{8}$  in.

**Texas.**

1882. Colton's new map of the state of Texas, the Indian territory, and adjoining portions of New Mexico, Louisiana, and Arkansas. Comp. by G. W. Colton. Pub. by G. W. & C. B. Colton & Co. N. Y., 1882. Scale 24 m. to 1 in. folded. D.

**Washington territory.**

1875. Map of Puget Sound, Washington territory. Comp. by Edgar M. Morgan, Olympia. S. F., Britton & Rey, lith., 1875. Scale 2 m. to 1 in.

**UNITED STATES—Continued.****Washington state.**

1890. Rand, McNally & Co.'s sectional map of Washington. Chic., 1890. Scale 8 m. to 1 in.

**Washington, D. C.**

- 1797-98. 1. The King plats of the city of Washington, 1803 (reprint). 2. L'Enfant's plan of the city of Washington. 3. Engraved plan of the city of Washington. 4. The Dermott map of the city of Washington, 1797-98 (reprint). F.

**CALIFORNIA.****General.**

1854. Official map of the state of California, approved by an act of the Legislature passed March 25, 1853. Compiled by W. M. Eddy, state surveyor-general. Pub. for R. A. Eddy, Marysville, Cal., by J. H. Colton, N. Y. 1854. Scale 18 m. to 1 in.
1857. Map of the public surveys in California to accompany report of [U. S.] surveyor-general. 1857. [Scale 18 m. to 1 in.]
1886. Rand, McNally & Co.'s new enlarged scale railroad and county map of California, showing every railroad station and post office in the state. Chic., Rand, McNally & Co., 1886. Scale 18 m. to 1 in.
1887. *Same*: 1887. Scale 18 m. to 1 in.
- [no date.] Tunison's indexed railway and township map of California. Pub. by H. C. Tunison, [188-]. Scale 12 m. to 1 in.
- [no date.] United States Geological Survey. [Topographic map sheets.] Alturas, Modoc lava-bed, Lassen Peak, Red Bluff, Honey Lake, Granite Range, Nevada City, and Marysville.
- [no date.] California land claims. (On tracing muslin. 1 v. F.)
1891. Commissioners' official railway map of California, 1891. Scale 15 m. to 1 in.
1891. Preliminary mineralogical and geological map of the state of California; issued by the California State Mining Bureau, W: Irelan, state mineralogist; drawn by J. C. Henkenius. Britton & Rey, lith. S. F., 1891. Scale 12 m. to 1 in.

**CALIFORNIA—Continued.****General—Continued.**

1895. Lentell's new railroad, township, and educational map of the state of California; comp. from the latest official and authentic sources; comp. and pub. by J. N. Lentell. 2d ed. Galloway, lith. S. F., 1895. Scale 10 m. to 1 in.
1895. Willson & Clark's indexed township and county map of California. Compiled and published by F. E. Willson and H. Clark. S. F., 1895. Scale 15 m. to 1 in.
1899. Map of California, showing townships, ranges, railroads, and wagon roads. Pub. by W. B. Walkup & Co. S. F., 1899. Scale 3 m. to 1 in.

*See also* CALIFORNIA AND NEVADA.

**Central California.**

1873. Map of the region adjacent to the bay of San Francisco, 1873. State Geological Survey of California; J. D. Whitney, state geologist. J. Bien, lith. Scale 2 m. to 1 in.  
Embraces in whole or in part the counties of San Francisco, San Mateo, Santa Clara, Santa Cruz, Alameda, Contra Costa, Solano, Sacramento, Napa, Sonoma, and Marin.
1873. Topographical map of central California, together with a part of Nevada. . . . State Geological Survey of California; J. D. Whitney, state geologist. 1873. Scale 6 m. to 1 in.  
Nevada is taken from Clarence King's survey.
1890. Bancroft's map of the bay counties; designed and drawn by W. V. Gray. Bancroft Co., lith. c. 1890. [No scale.] Size 38½ x 30 in.
1890. Map of 100 miles around San Francisco. S. F., 1890. [No scale. Size 20 x 28 in.]
- [no date.] Topographical map of the Yosemite Valley and vicinity; expeditions of 1878-79 under the command of G. M. Wheeler. J. Bien, lith. Scale 1:42,240.
1896. Map of the Sierra Nevada mountains of central California. Published and copyrighted by the Sierra Club. Berkeley, 1896. Walkup, lith. Scale 4 m. to 1 in. [Also] Yosemite valley. Scale 1 m. to 1 in. (Sierra Club pub. no. 12.) folded. O.

**CALIFORNIA—Continued.****Southern California.**

1861. [M. H.] Farley's map of the newly discovered tramontane silver mines in southern California and western New Mexico . . . together with the most practicable route thereto, and a correct table of reference, embracing distances, etc. Compiled from the official maps in the U. S. surveyor-general's office, from the surveys of the U. S. and California boundary commission, and from his own private explorations. I. H. Wildes, draughtsman. Pub. by W. Holt. S. F., [c. 1861]. Scale 18 m. to 1 in.
1886. Map of a part of southern California, accurately compiled from plats of U. S. land surveys, county records, and other reliable sources by [C. H.] Howland and Koeberle, surveyors and draughtsmen. Los Angeles, Cal., 1886. Scale 4 m. to 1 in.  
Comprises the counties of San Diego and Los Angeles, and portions of San Bernardino, Kern, and Ventura counties.
1888. Rand, McNally & Co.'s large scale sectional map of southern California, embracing the counties of Santa Barbara, Ventura, Los Angeles, San Bernardino, and San Diego. Chic., 1888. Scale 6 m. to 1 in.
1888. *Same*: 1888. folded. S.

**Alameda.**

1874. Official map of Alameda county, California. Compiled from official surveys and records and private surveys, and published by authority of the board of supervisors of Alameda county, by G. F. Allardt. S. F., 1874. Scale 40 chains, or  $\frac{1}{2}$  m., to 1 in. (2 cop.)
1889. Official map of Alameda county, California. Compiled by George S. Nusbaumer and W. F. Boardman; drawn by J. C. Henkenius. Adopted by the board of supervisors, Sept. 24, 1888; issued May 1, 1889. Pub. by the Tribune Publishing Co., Oakland. Scale 1 m. to  $1\frac{1}{2}$  in.

**CALIFORNIA—Continued.****Alameda—Continued.**

1894. Map showing portions of Alameda and Contra Costa counties and of the city and county of San Francisco. Compiled from official and private maps, surveys, and data, by Theodore Wagner. Drawn by G. Sandow. Britton & Rey, lith. S. F., 1894. Scale 2 m. to 3 in.

**Amador.**

1866. Official map of Amador county, California. Drawn from actual surveys by J. M. Griffith, county surveyor. Britton & Rey, lith. S. F., 1866. Scale  $1\frac{1}{2}$  m. to 1 in.
1881. Official map of Amador county, California. Compiled by J. A. Brown, county surveyor. S. F., 1881. Scale 60 ch. to 1 in.

**Butte.**

1877. Official map of the county of Butte, California. Carefully compiled from actual surveys. Pub. by James McGann, U. S. deputy surveyor. Britton, Rey & Co., lith. 1877. [Scale 1 m. to 1 in.]
1886. *Same*. 1886. [Scale 1 m. to 1 in.]
- [no date.] Thermalito. [No scale.] Size 23 x 37 in.

**Calaveras.**

1895. Official map of Calaveras county, California. Compiled from U. S. official surveys, from county records and from private surveys, showing mines and mining claims, reservoirs and water ditches, wagon roads, trails, also Mother lode, by State Mineralogist. Pub. by W. B. Walkup. S. F., [1895]. [No scale.]

**Colusa.**

1874. Official map, compiled and drawn from official surveys by J. B. De Jarnatt. Approved . . . . February session, 1874. Scale 100 ch. to 1 in.
1885. Official map of Colusa county, California. Compiled and drawn from official surveys and records by De Jarnatt and Crane, searchers of records, Colusa, Cal. Approved . . . . December, 1885. Britton & Rey, lith. Scale 100 ch. to 1 in.



**CALIFORNIA—Continued.****Contra Costa.**

1871. Topographical map of Contra Costa County. Compiled for the board of supervisors from the State Geological and U. S. surveys. 1871. Britton & Rey, lith. Scale 1 m. to 1 in.
1885. Official map of Contra Costa county, California. By T. A. McMahon, county surveyor, and Wm. Minto, civil engineer, in accordance with an order of the honorable board of supervisors, dated February 4, 1885. Britton & Rey, lith. Pub. by A. J. Leary, S. F. Scale 40 ch. to 1 in.

**El Dorado.**

1873. Map of Georgetown divide, El Dorado county, showing also portions of the Placerville and Forest Hill divide, with the ditches, mines, etc., of the California Water Company, by Amos Bowman. 1873. Scale  $1\frac{1}{7}$  m. to 1 in.  
Accompanies Bowman's report on the properties of the California Water Company. 1874:
1895. Map of the county of El Dorado, California. Compiled from the official records and surveys by Punnett Bros. Approved by the board of supervisors September 3, 1895. Pub. by Punnett Bros. S. F., 1895. Scale 1 m. to 1 in.

**Fresno.**

1874. Map of Fresno county, California. Compiled from the U. S. township maps, the geological surveys, and other authorities, by George H. Goddard, C.E., 1874, for Dixon & Faymonville, Millerton, Fresno county. Britton, Rey & Co., S. F. Scale [4 m. to 1 in.].
1886. Official map of Fresno county, California. Compiled from official surveys and records, by J. C. Shepard and H. B. Choice, 1886. Drawn by J. C. Henkenius. Scale 3 m. to 1 in.
1892. Official map of the county of Fresno, California. Compiled from official surveys and records; pub. by T. Yost & Son; drawn by E. A. Harley. 1892. Scale 2 m. to 1 in.
1898. Official map of the county of Fresno, California. Compiled from official records and latest surveys by Geo. L. Hoxie, 1898. Scale  $1\frac{1}{2}$  m. to 1 in.

**CALIFORNIA—Continued.****Glenn.**

1894. Map of the county of Glenn, California. Compiled from official surveys and records by N. K. Spect & Co. and T. L. Knock; drawn and published by Punnett Bros. S. F., 1894. [No scale.]

**Humboldt.**

1865. Official township map; drawn and published by A. J. Doolittle, 1865. G. T. Brown, lith. Scale 2 m. to 1 in.
1886. Official map of Humboldt county, California. Compiled and drawn by Stanly Forbes, 1886. . . . Britton & Rey, lith. Scale 2 m. to 1 in.
1898. Official map of Humboldt county, California. Compiled and published by J. N. Lentell. 1898. Scale  $1\frac{1}{2}$  m. to 1 in.

**Inyo.**

1884. [Official] map of the county of Inyo, state of California. Carefully compiled by J. B. Treadwell, U. S. deputy surveyor, from . . . surveys by Joseph Seely, county surveyor, 1884. Approved . . . Nov. 17, 1884. Scale 4 m. to 1 in. (2 cop.)

**Kern.**

1875. Official map of Kern county, California. Compiled from official surveys and records, by Ferd. von Leicht and Charles Kaufman, civil engineers. Britton, Rey & Co., lith. 1875. Scale 3 m. to 1 in.
1889. Map of Kern county, California. Compiled from official records and surveys by W. R. Macmurdo, county surveyor, 1888. Approved by the board of supervisors, March 7, 1889. A. J. Leary, print, [S. F.]. Scale 2 m. to 1 in.
1898. Official map of Kern county. Compiled from public records and private surveys by Chas. H. Congdon. Pub. by W. B. Walkup. S. F., 1898. Scale 1 m. to  $\frac{1}{2}$  in.

**Kings.**

1893. Official map of Kings county, California. Drawn by Theo. Binge; published by Frank J. Walker. W. B. Walkup, lith., S. F. Hanford, Cal., 1893. [No scale.]

**CALIFORNIA—Continued.****Lake.**

1892. Official map of Lake County, California. Compiled from the county records, and from actual survey of the county roads, by S. H. Rice. Britton & Rey, lith. S. F., 1892. Scale 100 ch. to 1 in.

**Los Angeles.**

1877. [Official] map, by J. H. Wildy and A. J. Stahlberg. J. Bien, lith. 1877. Scale 2 m. to 1 in.
1888. Official map of Los Angeles county. Compiled by order of the board of supervisors, by W. J. Rowan. 1888. Schmidt Label and Lith. Co., S. F. Scale  $1\frac{1}{2}$  m. to 1 in.
1898. Official map of the county of Los Angeles, California. Compiled from official maps by E. T. Wright. 1898. Drawn by C. N. Perry. Los Angeles Lith. Co. Scale  $1\frac{1}{2}$  m. to 1 in.

**Los Angeles and San Diego.**

1869. Map of private grants and public lands adjacent to Los Angeles and San Diego. Compiled from official surveys and published by Clinton Day, June, 1869. S. F., Britton & Rey, lith. Scale 4 m. to 1 in.

**Madera.**

1898. Official map of Madera county. Compiled from official records and latest surveys, by Frank E. Smith. Drawn and published by Punnett Bros. S. F., 1898. Scale 1 m. to  $\frac{3}{4}$  in.

**Marin.**

1873. [Official] map, compiled by H. Austin. Drawn by F. Whitney. A. L. Bancroft & Co., lith. 1873. Scale 1 m. to 1 in.
1892. Official map of Marin county. Compiled from records and surveys by George M. Dodge. Schmidt Label and Lith. Co., S. F., 1892. Scale 60 ch. to 1 in.

**Mariposa.**

1897. Official map of Mariposa county. Compiled by Geo. E. Washburn from United States surveys and public records. Dakin Pub. Co., S. F., 1897. Scale  $1\frac{1}{2}$  m. to 1 in.

**CALIFORNIA—Continued.****Mendocino.**

1887. Official map of Mendocino county, Mt. Diablo Md. Showing redwood belt. Drawn and compiled by N. B. Brakenridge. S. F., 1887. Scale 2 m. to 1 in.
1890. Official map of Mendocino county. Compiled from the U. S. government surveys, county records, and surveys of the county roads by Rice and Baltzell. Britton & Rey, lith. Ukiah, 1890. Scale 120 ch. to 1 in.

**Merced.**

1874. Official map, compiled by Mark Howell. Drawn by F. von Frankenberg. A. L. Bancroft & Co., lith. 1874. Scale 80 ch. to 1 in.
1888. Official map of the county of Merced. Compiled from the approved surveys of U. S. government, from the records of the office of the county surveyor, county recorder, and the board of supervisors of Merced county, by Chas. D. Martin. Dakin Publishing Co., lith. S. F., 1888. Scale 100 ch. to 1 in.

**Modoc.**

1887. Official map of Modoc county. Compiled by A. A. Smith; D. W. Jenks, principal draughtsman. S. F., Britton & Rey, lith., 1887. Scale 1 m. to 1 in.

**Mono.**

1870. Map of Bodie mining district. Compiled from the latest authentic data by Henry Phillips, and drawn by Wm. P. Humphreys. 1870. Scale 400 ft. to 1 in.
1880. Map of Bodie mining district, Mono county, California. Surveyed and compiled by C. L. Anderson, and illus. and pub. by Edward Eysen. 1880. Scale 300 ft. to 1 in.

**Monterey.**

1877. Map of the county of Monterey. Compiled and drawn by St. John Cox. Approved and declared . . . official, Feb. 9, 1877. Pub. by T. C. Markley, N. Y. Scale [2 m. to 1 in.].
1898. Official map of Monterey county. Compiled by Lou G. Hare from the public records, coast and geodetic survey, government survey of public lands, and private surveys. Pub. by W. B. Walkup & Co. S. F., 1898. Scale 1½ m. to 1 in.

**CALIFORNIA—Continued.****Napa.**

1876. Official map of the county of Napa. Compiled by George G. Lyman and S. R. Throckmorton, jr. 1876. M. Schmidt & Co., lith. Scale 1 m. to 1 in.
1881. Map of the central portion of Napa valley and the town of St. Helena. Compiled by M. G. King and T. W. Morgan from the official surveys and records of Napa county. 1881. Pub. by E. W. Woodward & Co., St. Helena. Scale 15 ch. to 1 in.
1895. Official map of the county of Napa, California. Compiled from official records and latest surveys by O. H. Buckman, 1895. Pub. by Punnett Bros., S. F. Scale 1 m. to 1¼ in.

**Nevada.**

1880. Map of Nevada county, California. Compiled from the latest authentic sources, showing towns, villages, roads, streams, mining ditches, and U. S. land surveys, quartz and placer mining claims, by J. G. Hartwell, county surveyor, 1880. Approved and declared . . . . official . . . . July 26, 1880. W. T. Galloway, lith. Scale 1¼ m. to 1 in.

**Orange.**

1889. Map of Orange county. Compiled by S. H. Finley. 1889. Scale 60 ch. to 1 in.

**Placer.**

1887. Official map of Placer county, California. Compiled from latest authentic sources, showing U. S. land surveys, mining claims, altitudes, roads, ditches, towns, and villages, etc. E. C. Uren, county surveyor. Compiled and drawn by Chas. E. Uren, 1887. Britton & Rey, lith. Scale 100 ch., or 1¼ m., to 1 in.

**Plumas.**

1886. Map of Plumas county, California, and portions of Lassen, Sierra, Nevada, Yuba, Butte, Tehama, and Shasta counties, California, and Roop and Washoe counties, Nevada. Compiled from the most authentic sources by Arthur W. Keddie, U. S. deputy surveyor. Quincy, Cal., 1886. Scale 4 m. to 1 in.

**CALIFORNIA—Continued.****Plumas—Continued.**

1892. Map of Plumas county, California. Compiled and published by Arthur W. Keddie. Quincy, 1892. Britton & Rey, S. F., lith. Scale  $1\frac{1}{2}$  m. to 1 in.

**Sacramento.**

1885. Official map of Sacramento county, California. Compiled by Fred A. Shepherd, Sacramento, Cal. 1885. Britton & Rey, lith. Scale 60 ch. to 1 in.

[no date.] Sutter grant maps. (On tracing muslin. 1 v. F.)

**Sacramento city.**

1889. Official map of Sacramento and vicinity. Compiled and published by James E. Grant. Drawn by J. C. Boyd. 1889. Scale 500 ft. to 1 in.

**Sacramento valley.**

[no date.] Mapa del valle del Sacramento. [No scale.] Size 18 x 24 in. Britton & Rey, lith.

1890. *Same.*

Certified by J. W. Mandeville, U. S. Sur.-Gen'l for California, to be a correct copy of a map on file in his office, in case 147, in the docket of the Board of U. S. Land Commissioners. Nov. 5, 1857.

**San Benito.**

1890. Official map of San Benito county, California; by W. B. Walkup. S. F., 1890. W: K. Brown, delineator. Scale 1 m. to 1 in.
1891. Official map of San Benito county. Compiled by Vic. T. and Harry W. McCray. 1891. Britton & Rey, lith., S. F. [No scale.]

**San Bernardino.**

1892. Official map of San Bernardino county, California. Drawn by T. D. Beasley. S. F., 1892. Scale 3 m. to 1 in.

**San Diego.**

1883. [Official] map of San Diego, California. Compiled by J. C. Fox and H. J. Willey. 1883. Endicott & Co., lith., N. Y. [Scale 3 m. to 1 in.]

**CALIFORNIA—Continued.****San Diego—Continued.**

1886. Sketch map of San Diego county. Showing the position of mines and minerals referred to in the 6th annual report of the state mineralogist of California for the year ending June 1, 1886. Henry G. Hanks, state mineralogist. [No scale.] (*In the Report.*)
1889. Official map of San Diego county, California. Compiled from latest official maps of U. S. surveys, railroad and irrigation surveys, county records, and other reliable sources; drawn by T. D. Beasley under the supervision of J. D. Schuyler, 1889. [S. F., c. 1890.] Scale 3 m. to 1 in.

**San Francisco.**

1847. Map of the town of San Francisco, 1847, by Washington A. Bartlett. [No scale. Photographic copy.]
1850. San Francisco from actual surveys, 1850. Miller's lith., N. Y. [No scale. Size 17 x 24 in.]
1851. Official map of the city of San Francisco, full and complete to present date. Compiled by W. M. Eddy, city surveyor, January 15, 1851. B. F. Butler, lith. Scale 800 ft. to 1 in.  
Commonly known as the "red line" map.
1851. *Same.* Without red line.
1854. New edition of Eddy's map, "complete to Jan. 15, 1854."
1852. Complete map of San Francisco. Compiled from the original map, from the latest surveys, containing all the latest extensions and improvements, new streets, alleys, places, wharves, etc. Published by Cook & Le Count. 1852. Scale 266 varas [nearly 295 yards] to 1 in.
1852. U. S. Coast Survey, A. D. Bache, supt. City of San Francisco and its vicinity, California. From a trigonometrical survey by R. D. Cutts, ass't. Pub. in 1852. Scale 1:10,000.
1854. Map of the city of San Francisco. Compiled from records and surveys by R. P. Bridgens. Respectfully dedicated to the citizens by the publisher, M. Bixby. 1854. Scale 400 ft. to 1 in.

**CALIFORNIA—Continued.****San Francisco—Continued.**

1854. Butler's map of the city of San Francisco, Cal. Compiled from the official map and recent surveys, with all the improvements and additions, showing the streets . . . with the buildings carefully laid down from actual measurement, as well as the dimensions and configuration of each lot. Pub. by Nathaniel Gray. 1854. [c. by B. F. Butler.] Scale 300 ft. to 1 in.
1855. Wheeler's topographical map of San Francisco county, surveyed by Vitus Wackenreuder for Alfred Wheeler. Pub. and copyrighted by Mariott & Wheeler, S. F., 1855. Engr. by W. E. Goldsmith and E. Moody. Scale 2 m. to 1 in.  
Embraces also what is now San Mateo county.
1859. Official map of the city of San Francisco, California. Published by Josiah J. Le Count, S. F. Approved by Geo. R. Turner, city and county surveyor. 1859. Scale 500 varas [nearly 555 yards] to 1 in.
1860. Map of the country 40 miles around San Francisco, exhibiting the county lines and correct plats of all the ranchos finally surveyed and of the public land sectionized. Compiled from U. S. surveys by Leander Ransom. S. F., [c. 1860]. Scale 4 m. to 1 in.
1861. Map of the city and county of San Francisco. Compiled from official surveys and sectionized in accordance with U. S. surveys. Drawn by V. Wackenreuder. 1861. Scale  $\frac{1}{2}$  m. to 1 in.
1864. Map of the city and county of San Francisco. Carefully compiled . . . for the S. F. News Letter and the Pacific Mining Journal by James Butler. 1864. Scale 20 ch. to 1 in.
1865. Map of San Francisco from surveys by the Board of City Engineers, under and by virtue of an act of the Legislature of the state of California, approved April 26, 1862 . . . Pub. by H. H. Bancroft & Co. S. F., 1865. Scale 400 ft. to 1 in.
1867. Index map of the city of San Francisco. Assessor's office, 1867. Arranged by V. Wackenreuder. Scale 1,000 ft. to 1 in.



**CALIFORNIA—Continued.****San Francisco—Continued.**

1870. Official map of the city and county of San Francisco, prepared by William P. Humphreys, city and county surveyor . . . Pub. by Britton & Rey. S. F., 1870. Scale 1,000 ft. to 1 in. (2 cop.)
1888. *Same*: 1888.
1875. Birdseye view of San Francisco and surrounding country. Pub. by Snow & May. [c. 1875. No scale.] Size 34 x 48 in.
1875. *Same*: Key.
1877. New and improved street map of the city of San Francisco, constructed on an entirely new principle, showing: 1. The streets, avenues, courts, lanes, [etc.]; their names, official grades, extent graded, house numbers, fire alarm numbers, position of U. S. mail and Wells, Fargo & Co.'s letter boxes, etc. 2. The public squares, parks, cemeteries, military reservations, fortifications. 3. Railroad depots, railroads, street car lines, distances in operation, ferry connections. 4. Ferry landings, names of wharves, etc. 5. Political wards. 6. Distances of all parts of the city from Lotta's fountain. 7. General directory to the churches, halls, public schools, banks, hotels, theaters, libraries, U. S. offices, municipal offices, etc. Drawn, comp., and pub. by Fred Thomas Newbery, C.E., 1877. [No scale.] Size 28 x 40 in.
1889. Costello & Holt's map of the city and county of San Francisco. Pub. by Holt & Costello, S. F. Drawn by J. C. Henkenius. 1889. McNeil Bros., lith. Scale 800 ft. to 1 in.
1890. Pocket map of 100 miles around San Francisco in mile circles. Compiled and published by the Elliott Publishing Company. S. F., 1890. folded.
1892. [Precinct maps, 1886-92.] Compiled by order of election commissioners of the city and county of San Francisco. [S. F.], 1892. F.
1894. Map of the city and county of San Francisco, by W. B. Walkup. S. F., 1894. Scale 800 ft. to 1 in.

**CALIFORNIA—Continued.****San Francisco and San Pablo bays.**

1875. Map of salt marsh, tide, and submerged lands of San Francisco and San Pablo bays. By T. J. Arnold, by order of the State Harbor Commission. [No date, about 1875.] Scale 1:50,000.

**San Francisco bay and influents.**

1869. Map showing lands of Tide Land Reclamation Co. Compiled and drawn by J. T. Gibbes. 1869. Britton & Rey, lith. Scale 2 m. to 1 in.

**San Joaquin.**

1870. [Official] map, compiled by John Wallace. 1870. Scale 1 m. to 1 in.
1883. Map of the county of San Joaquin, California. Compiled from official sources and the books of R. E. Wilhoit, searcher of records, Stockton, Cal., by John C. Reid. 1883. Engr. by S. B. Linton, Phil. Approved and declared official . . . . Sept. 18, 1882. Scale 1 m. to 1 in.
1894. Map of the county of San Joaquin. Compiled from U. S. surveys by H. T. Compton; lith. by Britton & Rey. S. F., [c. 1894]. Scale 4,000 ft. to 1 in.

**San Joaquin valley.**

1886. California State Engineering Department. Topographical and irrigation map of the San Joaquin valley. Wm. Ham. Hall, state engineer. 1886. Sheets 1-4. Scale 3 m. to 1 in.

**San Luis Obispo.**

1874. Map of the county of San Luis Obispo, California. Carefully compiled from actual surveys and published by R. R. Harris, county surveyor. 1874. Approved and declared . . . . official . . . . September, 1874. Britton, Rey & Co., lith. Scale 2 m. to 1 in.

**CALIFORNIA—Continued.****San Mateo.**

1868. Official map of San Mateo county, including the city and county of San Francisco, with all new additions of cities, towns, and villas, delineating the lines of ranches, private claims, waterworks, railroads, etc. Carefully compiled from actual surveys and pub. by A. S. Easton, county surveyor. 1868. Approved and declared to be the official map by a resolution passed Oct. 3, 1864 [*sic*] by the board of supervisors. Britton & Rey, lith. Scale 40 ch. to 1 in.
1877. Official map of the county of San Mateo, California, showing the new boundary line, and deliniating [*sic*] the lines of cities, towns, private claims, ranches, waterworks, and railroads. Carefully compiled by J. J. Cloud, county surveyor. 1877. Drawn by Walter M. Kerr. Britton, Rey & Co., lith. Scale 50 ch. to 1 in.
1894. Official map of San Mateo county, 1894. Compiled and drawn by D. Bromfield. Engraved and printed by Schmidt Label and Lith. Co. S. F., c. 1894. Scale 40 ch., or  $\frac{1}{2}$  m., to 1 in.

**Santa Barbara.**

1889. Map of the county of Santa Barbara, California. Pub. by Riecker, Huber, and Mench, civil engineers; compiled and drawn by Paul Riecker. 1889. Approved and declared to be the official map, by resolution of the board of supervisors of Santa Barbara county, November, 1888. [Scale about 6 m. to  $\frac{7}{8}$  in.]

With plans of Santa Barbara, Lompoc, and other towns.

**Santa Clara.**

1855. Map of the Cañada de los Capitancillos and adjacent hills and mountains, including the lands of New Almaden. Surveyed by William J. Lewis. Drawn by Vitus Wackenreuder, June, 1855. Printed by Britton & Rey. Scale 20 ch. to 1 in. folded. O.

**CALIFORNIA—Continued.****Santa Clara—Continued.**

1866. Official map of the county of Santa Clara, California. Surveyed and compiled by C: T. Healey, ex-county surveyor. 1866. Pub. by A. Gensoul, S. F. Britton & Rey, lith. Scale  $1\frac{1}{2}$  m. to 1 in.
1887. Map of Santa Clara county, California. Compiled by Bailey and Phillips, San José, 1887. Pub. by the Bancroft Company, S. F. [Scale about 1 m. to 1 in.]
1890. Official map of the county of Santa Clara, California. Compiled from U. S. surveys, county records and private surveys, and the tax list of 1889. Hermann Bros., surveyors; drawn by S. Wislocki. Britton & Rey, lith. S. F., c. 1890. Scale 80 ch. to 1 in.

**Santa Cruz.**

1889. Official map of Santa Cruz county. Compiled and published by A. J. Hatch, S. F., 1889. Scale 50 ch. to 1 in.

**Shasta.**

1884. Official map approved by the board of supervisors, October 6, 1884. Schmidt Label and Lith. Co. [No comp. No scale.] Size 45 x 30 in.
1891. Official map of Shasta county. Compiled by C. R. Briggs & Co. July, 1891. Redding. [Scale  $1\frac{1}{2}$  m. to 1 in.]

**Shasta valley.**

- [no date.] Map, showing all agricultural lands therein . . . for sale or lease by Fs. G. Burke. S. F., Britton & Rey, lith. [n.d.] Scale 1 m. to 1 in.

**Sierra.**

1874. Topographical map. Compiled from official surveys by Charles W. Hendel, U. S. deputy mineral surveyor for California. 1874. Britton & Rey, lith. Scale  $1\frac{1}{2}$  m. to 1 in.

**Siskiyou.**

1887. Official map of Siskiyou county, state of California. Carefully compiled by J. M. Davidson from actual surveys. 1887. Bancroft, lith. [Scale nearly 2 m. to 1 in.]  
With plans of Yreka and other towns.

**CALIFORNIA—Continued.****Solano.**

1872. [Official] map by J. S. Henning. 1872. Britton & Rey, lith. Scale 60 ch. to 1 in.
1890. Official map of the county of Solano, California, showing Mexican grants, U. S. government and swamp land surveys, present private land ownerships, roads and railroads. Compiled by E. N. Eager; app. April 7th, 1890, corr. to July 1st, 1890. Britton & Rey, lith. S. F., [1890]. Scale 60 ch. to 1 in.

**Sonoma.**

1867. Map of Sonoma county, California. Made and published by A. B. Bowers, in accordance with an act of the Legislature approved 28 March, 1863. With add. and corr. to Sept. 1, 1867. 2d edition. E. Fletcher, lith. Scale 1 m. to 1 in.

**Stanislaus.**

1877. Map of the county of Stanislaus, California. Compiled from U. S. and county surveys and public records by G. W. Smith and P. Y. Baker, civil engineers, Visalia, Cal. 1877. Britton, Rey & Co., lith. Scale 80 ch. to 1 in.
1895. Official map of Stanislaus county, California. Compiled from official surveys and records. George Perley, publishers, Modesto, Cal. Adopted by board of supervisors Nov. 14, 1894. Dakin Pub. Co., lith. 1895. [No scale.]

**Sutter.**

1873. Official map of Sutter county, California. Compiled and drawn from official surveys by J. T. Pennington, civil engineer. 1873. Scale 1 m. to 1 in.
1873. Map of Sutter county, California, showing the reclamation land districts. 1873. Prepared by C. W. & C. B. Colton & Co., N. Y. [Scale 2 m. to 1 in.]
1895. Official map of Sutter county, California. Compiled and drawn from official survey and records by Punnett Bros. Pub. by Punnett Bros. S. F., 1895. Scale 5 m. to 1 in.
- [no date.] Levee district no. 5, Sutter county. [n. d.] Geo. H. Baker, lith., S. F. Scale 1½ m. to 1 in.

**CALIFORNIA—Continued.****Tehama.**

1878. Official map of the county of Tehama, California. Carefully compiled from actual surveys by H. B. Shackelford and F. J. Nugent. 1878. Britton & Rey, lith. [No scale.] Size 58 x 35 in. (2 cop.)
1887. Official map of the county of Tehama. Carefully compiled from actual surveys by H. B. Shackelford. 1887. Britton & Rey, lith. Scale 1½ m. to 1 in.

**Trinity.**

1894. Official map of Trinity county, California. Compiled from government and local surveys, by H. L. Lowden and J. F. Johnson. S. F., 1894. Scale 1 m. to 1 in. (2 cop.)

**Tulare.**

1867. Map from surveys by Henry Chapman and J. A. Gordon. 1867. Britton & Rey, lith. Scale 3 m. to 1 in.
1876. [Official] map, by P. Y. Baker. 1876. [Scale nearly 2 m. to 1 in.]
1884. Map of Tulare county, state of California, made by Alfred Bannister, C.E., in accordance with an order of the honorable board of supervisors, dated November 8, 1883. 1884. Scale 2 m. to 1 in.

**Tuolumne.**

1879. Map of the principal quartz and gravel mines in Tuolumne county, California. Taken from government surveys and mining records, by J. P. Dart, Sonora, 1879. Scale 1 m. to 1 in.

**Ventura.**

1897. Official map of Ventura county, California; Geo. W. Power, comp. Published by W. B. Walkup. S. F., 1897. Scale 80 ch. to 1 in.

**Yolo.**

1871. [Official] map, by J. S. Henning. May, 1871. Britton & Rey, lith. [No scale.] Size 51 x 42 in.
1879. Official map of Yolo county, California. De Pue & Co., publishers and compilers, Oakland, Cal. Adopted by the board of supervisors, November 6, 1879. W. T. Galloway, lith., S. F. [No scale.] Size 54 x 54 in.

**CALIFORNIA—Continued.****Yuba.**

[no date.] Official map of Yuba county, California. Compiled and drawn from official surveys by N. Westcott, county surveyor. Britton & Rey, lith. Scale 1 m. to 1 in.

1887. Official map of Yuba county, California. Compiled and drawn from official records and actual surveys by J. M. Doyle, county surveyor. 1887. Britton & Rey, lith. Scale  $\frac{4}{5}$  m. to 1 in.

**Catalina Harbor.**

1852. Reconnaissance by the hydrographic party under command of Lt. James Alden, U. S. N. 1852. Scale 1:15,000. (U. S. Coast survey chart.)

*Note:* With a view.

**Lake Tahoe.**

1874. Topographical map of Lake Tahoe and surrounding country. Compiled from the best authorities by Ferdinand v. Liecht and J. D. Hoffmann. S. F., 1874. Scale 2 m. to 1 in.

**Yosemite Valley.**

1879. Topographical map of Yosemite Valley and vicinity; expeditions of 1878-79, under the command of G. M. Wheeler. J. Bien, lith. Scale 1:42,240.

[no date.] Map of the Sierra Nevada mountains of central California and of the Yosemite valley, by J. N. Le Conte. Scale 1 m. to 1 in. folded. O. (Sierra Club pub. no. 12.)











