

HEWLETT-PACKARD

Preparing for the Future with the HP NewWave Environment

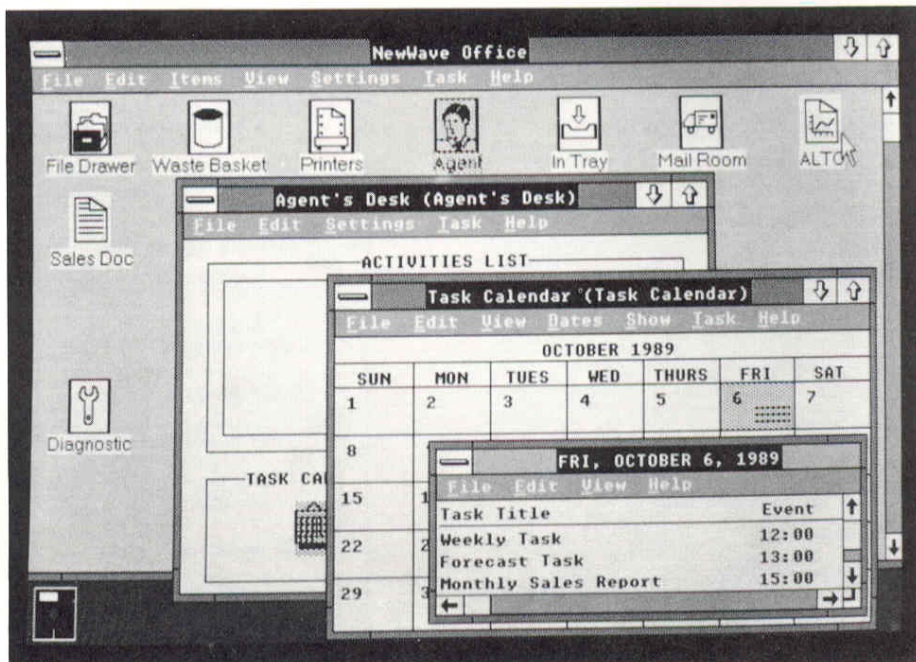
The Hewlett-Packard NewWave environment is an advanced application environment providing a single window, or view, into an organization's entire network of information and computing resources. This environment is based on Microsoft® Windows 2.0, and is designed to allow the end-user to focus on completing tasks rather than learning and using individual applications. Created as an open environment, the HP NewWave environment offers software developers an exciting opportunity to deliver major end-user benefits to their customers.

If you own or manage existing Hewlett-Packard office systems equipment and software, you may be interested to understand how you can grow into the HP NewWave environment. In the following pages, we will provide you with an overview of how to progress from some of HP's most popular office systems products to the HP NewWave environment. For additional details on how you may benefit from the HP NewWave environment, contact your local sales representative or applications engineer.

The Benefits of Growing into the HP NewWave Environment

The HP NewWave environment provides numerous benefits to end-users. Because it connects people with information naturally and effortlessly, the end-user is presented with a fully-integrated, and more productive working environment.

□ **Ease of Use.** The consistent and predictable graphic user interface makes this environment easy to learn and easy to use. The context-



The HP NewWave Office provides a graphic user interface that makes this environment easy to learn and easy to use.

sensitive Help facility and computer-based training also assist users while enabling developers to deliver these services more efficiently.

- **Seamless Integration Across Applications.** People working in the HP NewWave environment can move quickly and easily from one application to another because of the high level of integration. In this way, users can focus on tasks, not the tools used to accomplish them. In fact, the Object Management Facility (OMF) enables end-users to link, combine and manipulate data forms such as text, spreadsheets, graphics, scanned images and voice, creating "compound objects." The OMF also allows these links to be active connections, or "hot-links."
- **Integration with Your Organization's Computing Resources.** The HP NewWave environment provides each end-user transparent access to

information throughout the entire office system network: mainframes, minicomputers, other PCs, shared peripherals and communication links. In effect, the HP NewWave environment is the end-user's view into the organizations computer resources.

- **Agents for Major Productivity Gains.** "Agents" can be used to automate repetitive tasks throughout the network, freeing the end-user to focus on analysis and action rather than on the gathering of data.
- **Built on Industry Standards.** The HP NewWave environment is built on industry standard MS®-DOS and Microsoft Windows 2.0. This means the products are compatible with hardware common in today's business settings. Also, these products provide for a natural evolution to OS/2 and Presentation Manager, when they become available. Hewlett-Packard is

committed to maintaining compatibility with accepted industry standards.

□ **Integration of MS-DOS**

Applications. The HP NewWave environment allows existing MS-DOS applications to run within the environment. "Encapsulation," a technology that allows a shell to be built around an application to make it accessible from within the HP NewWave environment, protects your current investment in software.

The Pathway to Increased Productivity

What paths are available for you to progress into the HP NewWave environment? Following is a brief summary of some of the most popular Hewlett-Packard products and the growth paths available for each.

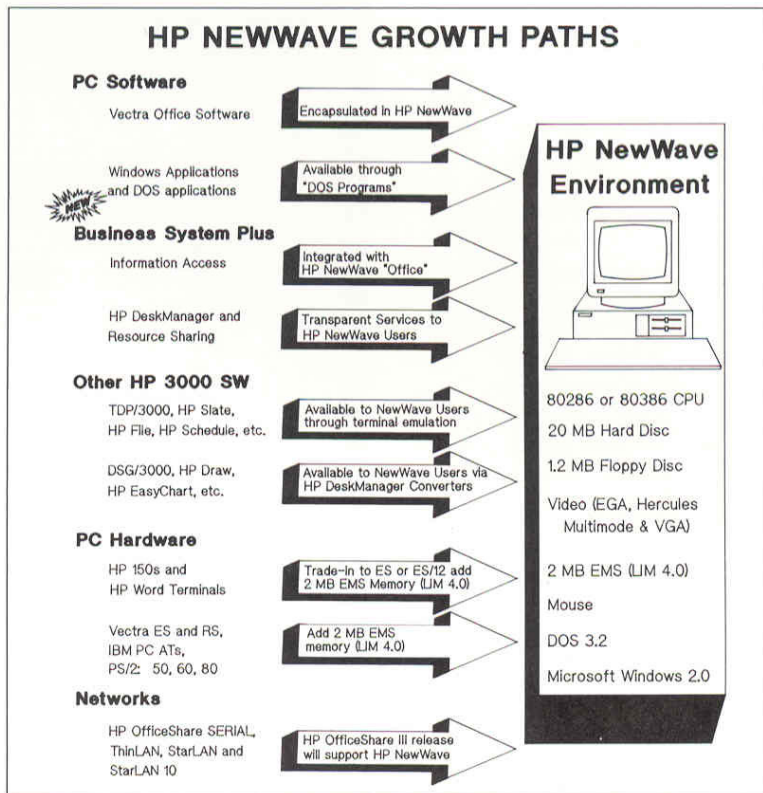
Many products will be able to be used in the HP NewWave environment with no modifications. In some cases, an upgrade to the most recent version of an application, or the addition of some hardware may be required. The following diagram "HP NewWave Growth Paths," illustrates the various ways you can grow into the HP NewWave environment.

PC Software

All Vectra Office software applications will be accessible through encapsulation which allows for familiar, MS-DOS-based programs to be integrated into the HP NewWave environment.

Graphics Gallery and Lotus® 1-2-3® will be highly encapsulated so they can create HP NewWave environment objects.

Executive MemoMaker, Executive Card Manager, and AdvanceWrite



Plus, in addition to many third-party applications, may be executed in a single step by accessing an area called "DOS Programs." This facility also allows users to run Microsoft Windows 2.0 applications, such as PageMaker®, from the HP NewWave environment.

Business System Plus

Information Access will be integrated with the HP NewWave "Office." This will provide end-users with easy access to information on HP 3000s and mainframes.

The print-sharing and PC back-up services of Resource Sharing will continue to appear as transparent services. Also, HP NewWave objects may be shared with other users by converting objects to MS-DOS files.

In fact, the HP NewWave environment will be able to be downloaded from Business System Plus, much as the Vectra Office

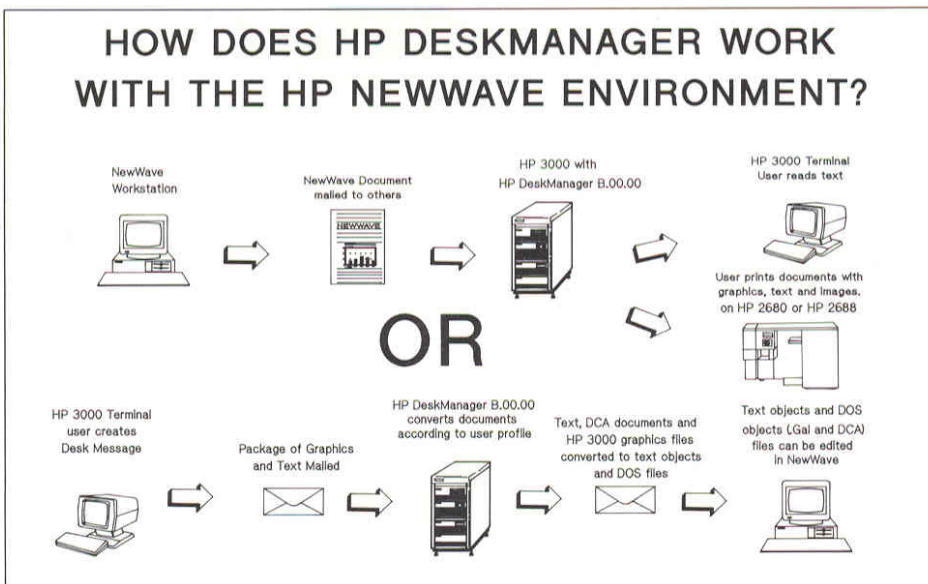
applications are today. This provides greater control and consistency in versions of PC software.

HP DeskManager will continue to provide electronic mail transport services to both HP NewWave environment and existing users. HP NewWave users will be able to read and edit compound documents from other NewWave users.

Today's HP 3000-based terminal users will be able to send and receive mail from the HP NewWave environment. With new converters in HP DeskManager, it will even be possible for HP 3000 terminal-based users to edit some parts of HP NewWave messages. (See the HP DeskManager illustration for details.)

If you currently own HP DeskManager, Resource Sharing, Information Access, or any of the Vectra Office Software Packs, you

HOW DOES HP DESKMANAGER WORK WITH THE HP NEWWAVE ENVIRONMENT?



Networks

The HP NewWave environment is supported by a number of different networks. HP OfficeShare StarLAN, ThinLAN, SERIAL and the recently announced StarLAN 10 networks will all support the HP NewWave environment. These networks will require the use of the new OfficeShare III software on servers and end-user systems. HP OfficeShare III will be available in the Spring of 1988. HP StarLAN 10 will be available in the first half of 1988.

For more details, please contact your local HP application engineer or network specialist.

Your Window to the Future

Take a look at the HP NewWave environment and you'll see an exciting opportunity to be a continuing part of Hewlett-Packard's next generation office system. When you grow into the HP NewWave environment, you can progress beyond your existing system, without leaving your current applications behind.

Progress to the HP NewWave environment along a smooth growth path, without risking your past investments. And, do it at your own pace. You can begin today with Business System Plus. It provides the information access, communication and resource sharing capabilities for today's products as well as for the HP NewWave environment.

Let the Hewlett-Packard NewWave environment be your window to the future. For more information on the HP NewWave environment and related products, you may wish to read the following literature. Additional information is available from your local HP sales representative or application engineer.

should consider growing into the new Business System Plus. Not only will it provide you with added functionality for your HP NewWave environment in the future, but the new Software Materials Subscription service will automatically deliver the latest versions of all your software and reduce your support costs by 10-40% from current contract prices. For details on the exciting new Business System Plus, contact your local Hewlett-Packard sales representative.

Other HP 3000 Software

HP 3000 software such as TDP/3000, HP Slate, HP File, HP Schedule and many other HP 3000 software packages are available to HP NewWave environment end-users through terminal emulation.

DSG/3000, HP Draw and HP Easy-Chart graphics can be converted into Gallery files through the HP DeskManager converters. This protects your investment by facilitating the easy exchange of graphics between the HP NewWave environment and the HP 3000.

PC Hardware

To progress from HP Touchscreens and HP Word Terminals to the HP NewWave environment, we suggest you take advantage of the trade-in programs to the Vectra ES and ES/12. With the addition of 2MB of EMS memory (LIM 4.0), these powerful new systems make excellent NewWave workstations.

If you're using Intel 80286 or 80386 PCs such as the Vectra ES or RS, IBM PC/ATs, PS/2 models 50, 60, or 80, you will need at least 2MB of EMS (LIM 4.0) memory, a 20MB hard disc, a 1.2 MB floppy disc drive, a video subsystem with at least 640 x 350 resolution (EGA, VGA, Multimode and Hercules), a mouse, MS DOS 3.2, and Microsoft Windows 2.0 in order to take advantage of the benefits of the HP NewWave environment.

In addition to the Vectra PCs, all of the most popular HP peripherals such as the HP LaserJet, HP 7550 Plotter, HP PaintJet, etc. are supported in the HP NewWave environment. For more details, see your local applications engineer.

Ordering Information

HP NewWave Brochure	5952-3768
HP NewWave Primer	5952-3755
HP NewWave Data Sheet	5954-9516
HP NewWave General Information Manual	5954-9517
Business System Plus Brochure	5952-3754D
Business System Plus Data Sheet	5954-9993

USA:
Hewlett-Packard
Business Computing Systems
19091 Pruneridge Ave.
Cupertino, CA 95014
For the sales office nearest you call:
(800) 752-0900

Or contact one of the regional offices below:

Hewlett-Packard
4 Choke Cherry Road
Rockville, MD 20850

Hewlett-Packard
5201 Tollview Drive
Rolling Meadows, IL 60008

Hewlett-Packard
5161 Lankershim Blvd.
North Hollywood, CA 91601

Hewlett-Packard
2000 South Park Place
Atlanta, GA 30339

Canada:
Hewlett-Packard (Canada) Ltd.
6877 Goreway Drive
Mississauga, Ontario
Canada, L4V 1M8
For the Canadian sales office nearest
you, call: 800-387-0783

Europe:
Hewlett-Packard S.A.
150 Route du Nant-d'Avril
P.O. Box
CH-1217 MEYRIN 2
Geneva, Switzerland

Australia/New Zealand:
Hewlett-Packard Australia Ltd.
31-41 Joseph Street
Blackburn, Victoria 3130
Australia
(03) 895-2895

Japan:
Yokogawa-Hewlett-Packard Ltd.
29-21, Takaido-Higashi 3-chome
Suginami-ku, Tokyo 168
(03) 331-6111

Far East Area:
Hewlett-Packard Asia Headquarters
47F China Resources Bldg.
26 Harbour Road, Wanchai
Hong Kong
(5) 833-0833

Hewlett-Packard Latin America Headquarters
Monte Pelvoux 111, Lomas de Chapultepec
11000 Mexico D.F.
(905) 595-7933/8077

 **HEWLETT
PACKARD**
BUSINESS SYSTEMS

*Lotus® 1-2-3® and Symphony® are registered trademarks of Lotus
Development Corporation.*

PageMaker® is a U.S. registered trademark of Aldus Corporation.

MS-DOS and Microsoft are registered trademarks of Microsoft Corporation.