

## **Historic, archived document**

Do not assume content reflects current scientific knowledge, policies, or practices.



62.09

1924/25

LIBRARY  
RECEIVED  
JAN 22 1925

*Wholesale Growers*

*ROSE*  
*BUSHES*



*Howard Rose Co.*

*—Incorporated—*

*Hemet, California*





## 1924-1925

The own-root roses we have grown for years, are the most profitable you can handle. Our output multiplies each year, the best possible proof of their superiority. The general assortment this year is better than ever before and we also believe the quality will be improved.

This year we offer a good many varieties grafted, such as do not propagate readily, using Gloire des Rosomanes roots which positively insures them against root-suckers. We know of no better stock for Hybrid Teas and kindred sorts.

While we do not claim to be the largest Rose Growers in the World, we have the facilities and willingness to serve you right.

We do feel you should become better acquainted with "Desert Climate Grown" Roses.

# “Beautiful Roses”

## —AS WE KNOW THEM



**Admiral Ward, H. T. (Pernet-Ducher 1915)**—Large bronzed foliage; full globular flowers free and continuous. Color crimson-red, shaded fiery-red and velvety-crimson.

**America, HT, (Hill's America), (E. G. Hill, 1921)**—Large, rose-pink, fine shaped flowers, sweetly scented, carried on long stems. Deep glossy green foliage; almost thornless.

**American Beauty, HP, (Bancroft, 1886)**—The original Mme. Ferdinand Jamin, but was imported by the historian Bancroft in 1886 and at his suggestion later introduced as American Beauty by a Washington florist. It is deep pink to soft carmine, with delicate veining to dark red on the broad petals. Under proper care it is a strong grower.

**Anna de Diesbach, HP, (Lacharme, 1859)**—Bright, clear pink of largest size, fine bud and open flower. The famous “Glory of Paris.”

**Annie Laurie, HT, (Stuppy Floral Co.)**—Bud large long pointed; flower large, very double; flesh pink, edges deeper, golden yellow base. Foliage abundant, large rich glossy green, disease resistant. Few thorns.

**Anna Mueller.**—See Baby Anna Mullre.

**Angelus, HT.**—Flower large, white, cream tint at center; very fragrant. Foliage dark green, upright and vigorous. Free bloomer.

**Antoine Rivoire, HT, (Pernet-Ducher, 1895)**—Rosy flesh on yellow ground. Large, full and very free.

**Arthur R. Goodwin, Per. (Pernet-Ducher, 1909)**—The buds open in copper mixed with orange-red, later replaced by soft salmon-pink. Always distinct and effective.

**Baby Anna Mueller, P.**—This is very much the same as Crimson Baby Rambler, except in the colors of its flowers, which are a shiny brilliant pink.

**Baby Catherine Zeimet, P.**—Produces pure white flowers in abundance. Fragrance similar to Hyacinths, of free growth and very attractive.

**Baby Cecil Brunner**—See Mme. Cecil Brunner, Pink, Rose, White.

**Baby Doll, P.**—The color is golden-yellow tipped with clear, bright cerise. The buds and flowers are very perfect in form.

**Baby Dorothy, P.**—Clear, brilliant pink; a free and delightful bedding Rose, Maman Levavasseur.

**Baby Echo, P., (Lambert, 1914)**—A greatly improved pink Baby Tausendschoen but of much greater vigor, probably a sport of Tausendschoen as it often reverts.

**Baby Edith Cavell, P., (Jan Spek, 1917)**—Brilliant scarlet, overlaid velvety crimson, with white eye; glistening mildew-free foliage.

**Baby Ellen Paulson, P.**—Dark, brilliant pink and very sweetly scented. Vigorous bushy habit, holding its form fine.

**Baby Erna Tschendorff, P.** (Tschendorff, 1911)—Deep crimson color, flushed with carmine. Resembling color of Gruss an Teplitz.

**Baby Etoile Luisante, (or Baby Herriot), P.**—Just picture to yourself "Cecil Brunner" colored up like "Mme Edouard Herriot", and you will have some conception of the beauty of this little gem. Its color is a shrimp-pink with intense coppery-yellow suffusion, the base of the petals golden-yellow.

**Baby Eugene Lamesch, P.** (Lambert, 1899)—Orange yellow, shaded clear yellow and rose, produced in large clusters.

**Baby George Elger**—See George Elger.

**Baby Greta Kluis, P.** (Kluis and Koning, 1915)—A pretty shade of deep carmine-pink, passing to a dark pink; very free.

**Baby Ideal, P.** (J. Spek, 1922)—Beautiful dark scarlet. A sport from Edith Cavell. Mildew-proof foliage.

**Baby Jessie, P.**, (H. Merryweather & Sons, 1909)—A dependable sort, producing continually bright cherry-crimson flowers which endure well on the plants.

**Baby Joan d'Arc, P.**—Pure white, large trusses of full, well formed flowers; very free.

**Baby La Fayette, P.** (Joseph Guy)—(A Nonin, 1921)—Bright-red. Large, semi-double flowers; good keeper. Very free flowering.

**Baby La Marne, P.**—Semi-double flowers, bright salmon-rose at the edges, rosy-blush inside. It blooms abundantly and continuously in boquets of fifteen to forty flowers. Has keeping qualities.

**Baby Mme. E. Harriott**—See Baby Etoile Luisante.

**Baby Louise Welter, (Welter, 1909), P.**—Identical in color with the popular climbing Tausendschoen a soft tender tone of pink; flowers 1 1-2 to 2 inches in diameter, produced throughout the season in trusses of 10 to 20 flowers each.

**Baby Mme. Gouchalt, P.** (E. Turbat & Company, 1913)—Buds bright vermillion red, shaded clear orange-red; flowers same, passing to a bright, fiery rose which does not fade. Wood and foliage clear.

**Baby Mme. Norbet Lavavesseur, P.** (Bevasseur, 1903)—The first sent out, and is of the utmost value by reason of its compact, habit and its continuous production of rosy crimson flowers during the season.

**Baby Orleans, P** (Levavasseur, 1910)—Bright geranium-pink. Florets not crowded but of beautiful arrangement.

**Baby Phyllis, P.**—Beautiful carmine-pink flowers in large pinnacles, very busy and of branching habit. A novel and most distinct Rose that is without an equal for any purpose.

**Baby Rambler**—See Baby Norbert Lavavasseur.

**Baby Tausendschoen**—See Baby Louise Welter.

**Baby Triomphe Orleanais, P.** (Peauger, 1912)—Flowers large, of a bright cerise-red which is very lasting. A vigorous grower, bearing its blooms profusely in clusters.



**Balduin**—See Helen Gould.

**Baroness de Rothschild, HP, (Pernet, 1867)**—Pale pink large in size and symmetrical in form, as well as fragrant. Each rose is set in a cup of beautiful foliage.

**Bessie Brown, HT, (A Dickson & Sons, 1899)**—Ivory-white blooms of immense size, good substance, and richly perfumed.

**Betty, HT., (A. Dickson & Sons, 1905)**—Are deliciously fragrant, of large size, full and beautiful. The exquisite color being copper, overspread with a golden-yellow, supported by a strong, vigorous bush.

**Black Prince, HP., (W. Paul, 1862)**—Deep crimson, large, full and globular. Free flowering. A fine Rose.

**British Queen, HT., (S. McGredy & Son, 1912)**—Pure white, sometimes slightly flushed rose. Large full flowers of exquisite form, opening freely.

**Candeur Lyonnaise, HP.**—Long oval bud, usually singly on long stem. Flowers very large, having attained six and seven inches in diameter, Color pure white, from Frau K. Druschki of which it has kept all its qualities, and is larger.

**Captain Christy, HP., (Lacharme, 1873)**—Has foliage of rare beauty, dense and deep green in color. The delicate buds together with the very large, full flowers of pale peach color, deepening towards the center, making it of striking appearance. Blooms almost the entire season.

**Captain F. Bald, HT., (A. Dickson & Sons, 1919)**—Velvety black with scarlet-crimson sheet. Very fragrant.

**Captain Hayward, HP., (Bennett, 1893)**—Of largest size. Color glowing crimson very bright and rich. About the best HP. in the entire class.

**Catherine Zeimet**—See Baby Catherine Zeimet.

**Chas. K. Douglas, HT., (H. Dickson, 1919)**—Flaming scarlet, flushed velvety crimson, sweetly scented, vigorous upright grower.

**Cheerful, HT., (S. McGredy & Son, 1915)**—Orange-flame flowers, with heavy orange-yellow markings at base of petals.

**Clara Watson, HT.**—Flesh, with center tinted rose-peach. Good form and rich fragrance.

**Cleveland, HT., (H. Dickson, 1916)**—Old-rose, coppery yellow at base. Large full flowers.

**Clio, HP., (Wm. Paul & Son, 1894)**—Silvery flesh with center shaded clear pink. Large, globular; very fine.

**Clothilde Soupert, P., (Soupert & Notting, 1890)**—Known the world over as one of the very best of all bedding Roses. The only rival of "Hermosa" as a bedder and market pot plant. The color effect is beautiful ivory-white, shading towards the center to bright silver-pink.

**Col. Oswald Fitzgerald, HT.**—Brilliant, velvety-crimson blooms produced in great profusion on erect stems; pure tea perfume. We have no hesitation what-so-ever in describing this variety as excellent.

**Columbia, HT., (Hill, 1917)**—Peach-blow pink, deepening as it opens resembling a perfect Shawyer rather than the other parent, Ophelia. A large rose with

long, stiff stems, nearly thorneless, free from mildew.

**Columbia Silver, HT., (Silver Columbia), (Leonard, 1924)**—Improved Columbia. It is a stronger grower, a larger and better flower, perfectly formed. Color beautiful shade of deep silver pink, deepening in color as the flower opens. Awarded Silver Medal by the American Rose Society.

**Commonwealth, HT., (The Montgomery Co.)**—Bud large, long, pointed; flower large, double and very lasting. Deep pink on medium strong stem, moderate fragrance. Sufficient foliage and disease resistant. Continuous bloomer.

**Comtesse de Cassagne, HT.**—Flowers rich coppery-pink shaded rose; sometimes comes pure yellow; very large, form fine; growth vigorous; fragrant.

**Conrad F. Meyer, HR., (Muller, 1900)**—This Rose is classed by some as a Hybrid Rugosa; it is the best Hybrid Perpetual you have ever known. It is a grand Rose, free bloomer; flowers large, double, cup-shaped. Color deep, bright intense pink, with the penetrating fragrance of the old June Roses.

**Constance, Per., (Pernet-Ducher, 1915)**—Buds streaked with crimson, becoming large, full and globular flowers of shades of yellow.

**Coquette des Alps, HP., (Lacharme, 1868)**—Pure white, delicately tinted blush on first opening. Another of the old-timers that will never be put on the shelf.

**Countess Clanwilliam, HT., (H. Dickson, 1914)**—Buds long and pointed, opening to large, full, high centered flowers of great beauty and refinement. Color peach-pink at the base of the petals, which are heavily edged with deep cherry-red.

**Countess of Gossford, HT., (McGredy, 1906)**—Clear salmon-pink; base of petals suffused yellow; large, well-formed flowers abundantly produced.

**Countess of Warwick, (W. Easlea), HT.**—Color lemon-yellow, edged with pink. Erect growth.

**Covent Garden, HT.**—Deep crimson of splendid form, very full; a most promising red.

**Crimson Chatenay, H. T.**—See Mme. Able Chatenay Crimson.

**Crimson Queen, HT., (A. Montgomery, Jr., 1912)**—A strong, upright grower, with flower large size. Color a rich, bright velvety-crimson. A grand Rose, always in bloom.

**Crusader, HT., (Montgomery Co., 1920)**—A strong growing variety, robust and rugged in every characteristic; the growth is heavy and the flower stems strong. Free flowering; double; color a rich velvety-crimson.

**Daily Mail, HT.**—See Mme. Edouard Harriot.

**Dorothy Page Roberts, HT., (A. Dickson & Sons, 1907)**—Coppery-pink, suffused apricot-yellow; very free and constant. A good Rose.

**Double White Killarney, HT.**—See Killarney Double White.

**Duc d' Rohan, HP.**—Brilliant carmine, large and full; one of the very best Hybrid Perpetuals we have.

**Duchess of Albany, HT., (W. Paul, 1838)**—A deep-colored La France. Sometimes called the red La France.

**Duchess de Brabant, T., (Benede, 1857)**—Light Rose, shaded salmon. Very free, early and late. Another of the old ones that will never go out.

**Duchess of Wellington, HT., (A. Dickson & Sons, 1909)**—Intense saffron-yellow flushed crimson, changing to deep coppery-yellow. Long, pointed buds. Considered by many the best yellow HT.

**Ecarlate, HT., (Boytard, 1907)**—Scarlet-red of extreme brilliancy; higher in color than "Liberty." Medium size, very floriferous, and splendid bedder.

**Edel, HT., (S. McGredy & Son, 1919)**—White flowers that open ivory-white. Strong grower, and free-flowering.

**Earl of Dufferin, HP., (Earl of Dufferin, 1887)**—Rich, brilliant velvety-crimson. Large, full and well formed. A splendid Rose.

**Echo**—See Baby Echo.

**Edith Part, HT., (S. McGredy & Son, 1913)**—Rosy-red with suffusion of deep salmon and coppery-yellow. Very free flowering and fragrant.

**Edith Cavell**—See Baby Edith Cavell.

**Edward Mawley, HT., (S. McGredy & Son, 1911)**—One of the finest of all dark crimson Roses. A true Perpetual flowering Hybrid Tea. Received the much coveted gold medal of the National Rose Society of England.

**Eldorado, HT., (Howard & Smith, 1922)**—Golden yellow with the peculiar tint of the Marechal Neil Rose, at the base of the peals slightly tinted red. Large flowers of distinct formation. Free flowering and very fragrant.

**Ellen Paulson**—See Baby Ellen Paulson.

**E. P. H. Kingma, Per., (Verschuren, 1920)**—Deep apricot and orange yellow. Coloring particularly bright and attractive. Very fine.

**Erna Tschendorff**—See Baby Erna Tschendorff.

**Esme, HT.**—Large flowers of creamy white, flushed carmine on back edge of petals.

**Etoile d'France, HT., (Pernet-Ducher, 1904)**—Rich velvety-crimson center, ruby red, large and double Likes hot weather.

**Etoile Luisante**—See Baby Etoile Luisante.

**Eugene Furst, HP., (Soupert & Notting, 1876)**—Color deep red, shaded crimson. Profuse bloomer. A most charming and superbly grand Rose.

**Eugene Lamesch**—See Baby Eugene Lamesch.

**Evelyn, HT., (Wm. Paul & Son, 1918)**—Large, fragrant flowers, salmon-white shaded and bordered rose.

**Evening Star, Per, (Morse, 1920)**—Golden yellow shaded apricot. A sport of Mme. Ed Harriot. Some claim this variety is a climber but it seems so far to be merely a vigorous grower.

**F. J. Grootendorst, PR, (De Goey, 1918)**—This is a new type which might be called a Rugosa Baby Rambler, being a cross between Rugosa and the crimson Baby Rambler. Imagine a shrub-like Rugosa covered with trusses of crimson Baby Rambler Roses. It

is absolutely hardy and continues in bloom until late in the fall.

**Fischer Holmes, HP., (E. Verdier, 1865)**—Bright crimson scarlet, with long buds, which open into a large flower of fine shape and beauty.

**Francois Levet, HP.**—Deep rose, of large size; very free bloomer; extra fine.

**Frank W. Dunlop, HT, (Dunlop, 1919)**—At the International Flower Show at New York its record was; Winning silver medal for the best new pink Rose in the exhibition. Claimed to be better than Mrs. Charles Russell.

**Frau K. Druschki, HP, (P. Lambert, 1900)**—Pure snow-white; long pointed buds; large, full flowers; free and constant.

**George Arends, HP, (Hinner, 1910)**—Clear, brilliant pink, good bud and perfect form flower. Strong grower and in every way worthy.

**Georges Clemenceau, HT, (Leveque, 1919), Pern.**—Bright Orange shaded carmine. Color splendid. Vigorous, free bloomer. Is either a sport or seedling of Mme. Ed Harriot.

**George Dickson, HP, (A. Dickson & Sons, 1912)**—Color velvety, dark crimson splendid shape and good substance.

**George Elger, P, (E. Turbat & Co., 1912)**—The long-sought-for yellow Cecil Brunner. This, with Cecil Brunner and Perle d'Or are the best corsage varieties. They all have about the same foliage and should not be confused with the other hardy Polyantha "Baby" kinds.

**General Jacqueminot, HP, (Roussel, 1852)**—Crimson-scarlet large full very fragrant. One more of the old ones that will always please your customer.

**General McArthur, HT, (E. G. Hill Company, 1904)**—Bright scarlet, large full and very free. Erect branching habit and very perpetual. One of the finest and most fragrant Roses grown.

**Gen. Sup. A. Janssen, HT, (M. Leenders & Company, 1912)**—Deep, glowing carmine; large, full, deep flowers carried on robust stiff stems; very free.

**General Washington, HP.**—Large full; dark red.

**Gladys Holland, HT, (S. McGredy & Son, 1917)**—Of magnificent form and size. Color buff, shaded orange-yellow; outside of petals pearly-peach. Very free flowering. Awarded a gold medal at National Rose Society of England.

**Gloire de Margottin, HP.**—Brilliant scarlet-crimson, fine petals, free and perpetual. Sometimes classed with the climbers.

**Glory of Paris**—See Anna d' Diesbach.

**Gloire des Rosamanes**—See Ragged Robin.

**Glow Worm, Per., (Easlea, 1919)**—Single or nearly so. Scarlet suffused coppery orange. On the order of Isobel but coloring more intense, often as brilliant as Austrian Copper. Abundant and continuous bloomer. Flowers large.

**Golden Emblem, Per, (S. McGredy & Son, 1917)**—A clear yellow Rose, showing buds with flames of light crimson on outer petals, upright stems, of good substance and mildew resistant.

**Golden Ophelia, HT.**—See Ophelia Golden.

**Golden Sun**—See Perle d' Or.

**Gorgeous, HT, (H. Dickson, 1915)**—Flowers are large and full. Deep orange yellow and heavily veined with reddish copper, the most charming and gorgeous coloring which has yet been introduced.

**Greta Kluis**—See Baby Greta Kluis.

**Gruss an Teplitz, HT, (Geschwind, 1897)**—Brightest scarlet-crimson, growing freely and flowering profusely. Quite hardy even in cold sections.

**H. V. Machin, HT, (A. Dickson & Sons, 1914)**—Scarlet-crimson, shaded darker, well shaped blooms on strong-growing plants with good foliage. An English Gold-Medal Rose.

**Hadley, HT, (Montgomery Co., 1914)**—Deep velvety-crimson, retaining its color at all seasons. Buds well formed, large, full and free, with most delicate fragrance.

**Harry Kirk, T, (A. Dickson & Sons, 1907)**—Deep sulphur-yellow with edges of petals lighter. Well formed, full, free and vigorous.

**Heinrich Munch, HP, (Munch & Haufe, 1911)**—Soft pink very large and full, vigorous. Took the sweepstakes prizes at the Boskoop Rose Exhibition in June, 1913. This is without doubt the finest of all Hardy Pink Roses. It is a true Pink Druschki.

**Helen Gould, (Baldwin) HT, (Lambert, 1898)**—Bright watermelon-red, very free vigorous and strong. One of the best red Roses.

**Helen Taft, HT.**—A rich cerise-pink. Flowers very large. A free bloomer and will become as famous as a bedding Rose as is the variety President Taft. Growth very strong.

**Henriette, HT, (H. Merryweather & Sons, 1915)**—One of the finest in existence for bedding, garden and cut-flower purposes; blooms erect on long stems; buds long and pointed. Color fiery orange-crimson, changing to soft coral-salmon. Very hardy; free in habit. Semi-double.

**Hermosa, C, (Marcheseau, 1840)**—Pleasing shade, clear pink. Another of the old ones that will always be in demand, Vigorous, hardy and favorably known.

**His Majesty, HP, (McGredy, 1908)**—Dark crimson, shaded vermillion.

**Hoosier Beauty, HT, (F. Dorner & Sons, 1915)**—Color glowing, deep crimson with darker shadings. Upright, strong, free, good form and texture.

**Hortulanus Budde, Per.**—Color, dark red of fine shade. Blooms in great profusion throughout the summer; semi-double.

**Hortulanus Fiet, Per. (M. Leenders & Co.)**—Flower salmon-rose, buds long, apricot yellow, with coppery edges. Growth medium, very floriferous. A fine garden Rose.

**Hugh Dickson, HP, (H. Dickson, 1904)**—Intense crimson, shaded scarlet. Very large, full and magnificent form. Very pronounced sweet fragrance.

**Hugonis, (Rosa Hugonis)**—Single, yellow and fragrant. A natural species.

**Ideal**—See Baby Ideal.

**Irish Elegance, HT, (A. Dickson & Sons, 1905)**—Beautiful Irish single Rose fine form, long and pointed. Color bronzy-orange to pink, shaded to apricot.

**Irish Fireflame, HT, (A. Dickson & Sons, 1914)**—It makes beautiful buds that remain in shape a long time, having great substance. It comes with long stems. The color is old gold or coppery-yellow, flamed with ruddy crimson. Certainly a most glorious Rose.

**Isobel, HT, (S. McGredy & Son, 1916)**—Crimson, flushed orange-scarlet, faint copper shading and yellow center. Large, single fragrant flowers; freely produced.

**Janet, HT, (A. Dickson & Sons, 1915)**—Large globular, cupped blooms of salmon-flesh, developing to fawn; fragrant. Splendid habit; good autumn bloomer.

**J. B. Clark, HP, (H. Dickson, 1905)**—Intense, deep scarlet, heavily shaded blackish-crimson; large, full with immense petals.

**John Hopper, HT, (Ward, 1862)**—Large shapely blooms, sweetly scented and of rosy red, changing to carmine.

**Jon J. L. Mock, HT, (M. Leenders & Co., 1909)**—Bright cherry-red, inside petals silvery white. Large full, with high pointed center.

**Jubilee, HP, (Walsh, 1897)**—A pure crimson with shadings of maroon. Strong, vigorous and good in any location.

**Jessie**—See Baby Jessie.

**Joan d'Arc**—See Baby Joan d' Arc.

**Juliet, Per, (Wm. Paul & Son, 1909)**—The petals outside are old-gold, and inside vary from scarlet to crimson. Beautiful in bud and half-open stage. Always fragrant. A vigorous summer bloomer.

**Kaiserin A. Victoria, HT., (P. Lambert, 1891)**—Creamy-white flowers of immense substance, smooth and nicely arranged.

**K of K, (Kitchener of Khartoum), HT, (A. Dickson & Sons, 1917)**—A startling, dazzling semi-single rose of interset scarlet of absolutely pure color. Its huge petals are velvet, sheened solid scarlet throughout. Awarded Gold Medal, National Rose Society.

**Killarney Brilliant, HT, (A. Dickson & Sons, 1914)**—Same growth and style as Killarney, and like it varies considerable in color. Shady weather it is almost deep crimson.

**Killarney Double White, HT, (J. A. Budlong & Son Company, 1913)**—A pure white sport from White Killarney; has a much larger bud; has many more petals than its parent. A great forcing Rose.

**Killarney Pink, HT, (A. Dickson & Sons, 1898)**—Deep shell-pink, long pointed buds with large flowers. Very free and perpetual.

**Killarney White, HT, (Waban Rose Conservatories, 1909)**—A sport from Killarney. It is pure white in color, long in bud, of fine form.

**King George V, HT, (H. Dickson, 1912)**—Deep blackish crimson; large, full and well-formed; free and constant bloomer.

**Lady Ashtown, HP, (A. Dickson & Sons, 1904)**—Carmine-pink, shading to golden yellow at base of petals. Blooms are large, globular, and well formed, higher in the center than at the edge.

**Lady Battersea, HT, (W. Paul, 1901)**—Deep cherry-red, long, pointed flowers, moderately full, freely and abundantly produced.

**Lady Hillingdon, T, (Lowe & Shawyer, 1910)**—Deep orange-yellow, good size long and pointed bud; excellent for cutting.

**Lady Ursula, HT, (A. Dickson & Sons, 1908)**—Large, well-formed blooms with thick petals, flesh-pink, without much shading, good fragrance.

**La Detroit, HT, (Hopp, 1905)**—Shell-pink, shading to soft-rose. Large, full, upright and strong.

**La France, HT, (P. Guillot, 1867)**—Bright satin-pink with silver reflex. This variety will always be a heavy seller.

**La Marne**—See Baby La Marne.

**La Somme, Per, (Barbier & Co., 1919)**—Vigorous shrub with large foliage, deep green. Round bud, orange red, and deep copper. Flowers large, form of Caroline Testout, deep coral red with coppery reflects passing to bright salmon.

**Laurent Carle, HT, (Pernet-Ducher, 1907)**—Deep rosy-carmine, large, full, very free and constant.

**Lillian Moore, HT, (H. Dickson, 1917)**—This Rose won in open competition with Roses from all countries of the world the much-coveted One-Thousand-Dollar Trophy offered by the 'Panama-Pacific Exposition for the best new seedling Rose not in commerce; was named in honor of the wife of the president of the exposition. Color deep, pure Indian-yellow with slightly deeper center; long buds; free bloomer.

**Los Angeles, Per, (Howard & Smith, 1916)**—One of the finest Roses ever introduced. The growth is vigorous, and produces a long stemmed flower of a luminous flame-pink, toned with coral and shaded with translucent gold at the base of the petals. The buds are long and pointed.

**Louise C. Breslau, Per, (Pernet-Ducher, 1912)**—Long oval buds of coral-red shaded with chrome-yellow, developing into fragrant, globular flowers which present other novel shades. The plant is a vigorous grower and robust constitution.

**Louise Welter**—See Baby Louise Welter.

**Ludwig Moller, HP, (H. Kiese & Co., 1914)**—This is the wonderful Yellow Druschki. It has all the good qualities of Frau Karl Druschki. Vigorous grower, free bloomer, and has light yellow flowers.

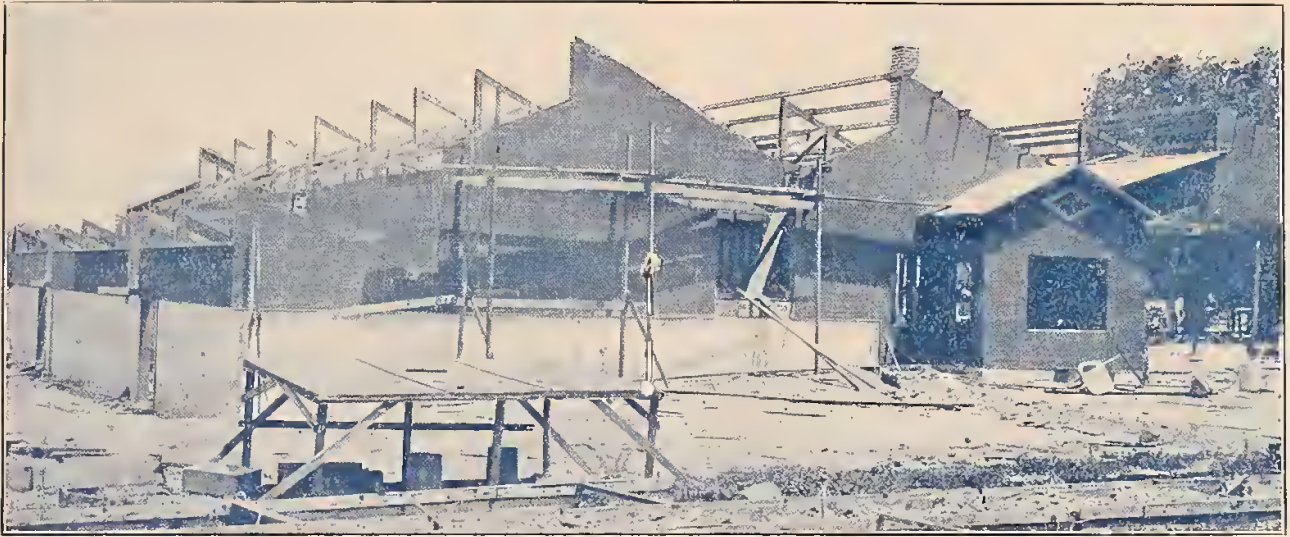
**Magna Charta, HP, (Wm. Paul & Son, 1876)**—Bright rose, very large and double. Of good form and fragrant.

**Maidens Blush**—See Wm. R. Smith.

**Marjorie Buckeley, HT.**—Strong, free branching growth; buds long, opening into buff heavily flushed with rose, and finishing into silvery-pink, of ideal habit, opening freely in all kinds of weather. Good garden Rose, awarded Gold Medal.







THIS SNAP-SHOT TAKEN WHILE WE GO TO PRESS SHOWS WHAT WE ARE DOING TO MAKE IT POSSIBLE TO DELIVER PLANTS TO YOU IN PERFECT CONDITION.

THIS BUILDING CONTAINING NINE THOUSAND SQUARE FEET CELLAR SPACE BESIDES THE SECOND STORY, IS TO REPLACE THE ONE BURNED LAST FEBRUARY. LATER WE WILL SHOW THIS COMPLETED.

**Maman Cochet Pink, T, (Cochet, 1892)**—Light pink, shaded with salmon-yellow and outer petals splashed rose. Large and full, fine to cut.

**Maman Cochet White, T, (J. Cook, 1896)**—Cream White, with edges flushed rose. Otherwise same as the Pink from which it is a sport.

**Maman Lavavessur**—See Baby Dorothy.

**Mary Countess of Ilchester, HT, (A. Dickson & Sons, 1909)**—Crimson-carminé a shade difficult to describe, of great size, with large, smooth, circular petals, delicately scented.

**Miss Amelia Gude, HT, (Fred H. Lemon & Co.)**—A cross between Columbia and Sunburst. Bud long, pointed; flower medium size, deep yellow center shading to cream; fragrant. Foliage handsome dark green. Vigorous, free bloomer.

**Miss Lolita Armour, Per, (Howard & Smith, 1919)** In 1921 it won the Bagatelle (Paris) prize. Its fragrant blooms develop from well-shaped buds, chrome-yellow at the base, shading to orange and copper hues on the reverse of the petals, and with much of the copper and shrimp-pink tints in its make-up. Free blooming.

**Miss Wilmot, HT, (S. McGredy & Son, 1919)**—One of the most refined and charming Roses. The color is practically a uniform soft light-cream with the faintest flush towards the edges. In shape and form this Rose is a model of perfection; every flower comes perfect and produced with a freedom that is marvelous. Gold medal, N R S.

**Mme. Able Chatenay Crimson, HT, (H. Merryweather & Sons, 1915)**—More vigorous than its parents, and producing freely the same imbricated and fragrant blooms, but in bright crimson.

**Mme. Able Chatenay, HT, (Pernet-Ducher, 1894)**—Carmine-rose, shaded salmon. Large, full, free and strong. Flowers early and late.

**Mme. Butterfly, HT, (E. G. Hill Co., 1918)**—A sport of Ophelia, showing better growth, with more and larger flowers, in a brilliant pink, suffused apricot and gold. The plant is free and fine in growth and habit.

**Mme. Cecil Brunner, Pink, P, (Mme. Ducher, 1881)**—Bright rose, shaded salmon-pink. The best of the miniature Roses.

**Mme. Cecil Brunner Rose, P.**—Same as Cecil Brunner except it is deep-rose. It is decidedly darker than Cecil from which it no doubt originated. Named Pink Gem.

**Mme. Cecil Brunner White, P.**—Same as Cecil Brunner except color is white, tinted flesh.

**Mme. Chas. Wood, HP, (E. Verdier, 1861)**—Bright cherry-red, free bloomer. A good garden Rose. This is the same Rose as Dinsmore.

**Mme. Caroline Testout, HT, (Pernet-Ducher, 1890)**—Clear, bright satiny-pink. The Rose that helped make Portland, Oregon, famous.

**Mme. Caroline Testout White, HT, (Bide & Son, 1911)**—Same as Testout except color is pure white.

**Mme. Edouard Harriot, Per, (Pernet-Ducher, 1913)**—Deep terra-cotta or reddish-copper. Free and strong. The "Daily Mail" Rose.

**Mme. Jenny Gillemot, HT, (Pernet-Ducher, 1905)**—Deep saffron-yellow with golden shadings. Upright, strong, with beautifully formed buds and flowers.

**Mme. Ferdinand Jamin**—See American Beauty.

**Mme. Jules Grolez, HT, (P. Guillot, 1897)**—Red K A Victoria. Bright China rose large, full, high center flower with nice reflex petals.

**Mme. Jules Gouchalt**—See Baby Mme. Jules Gouchalt.

**Mme. Leon Pain, HT, (P. Guillot, 1904)**—Silvery flesh-pink, center yellowish orange, large, full and free.

**Mme. Norbert Lavavesseur**—See Baby Mme. Norbert Lavavesseur.

**Mme. Pernet-Ducher, HT.**—A good yellow Rose. Vigorous and quite Hardy.

**Mme. Plantier, N, (Plantier, 1835)**—Extremely hardy; completely hides itself in June with its lovely pure white, sweet scented flowers; fine.

**Mrs. Aaron Ward, HT, (Pernet-Ducher, 1907)**—Center Indian-yellow with edge primrose. Medium size flowers, free and full.

**Mrs. A. R. Waddell, HT, (Pernet-Ducher, 1908)**—Scarlet buds, opening to deep reddish saffron. Semi-double flowers, freely produced. Strong grower.

**Mrs. Calvin Coolidge, H. T. (F. R. Pierson, 1924)**—A sport from Ophelia, bright yellow, changing to deep orange as the flower develops. Does not lose its color when cut, but deepens to rich orange.

**Mrs. Charles Bell, HT, (Mrs. Charles Bell, 1917)**—A shell-pink sport of Radiance. It has no characteristics which make it distinct from Radiance except that it is shell-pink. Mrs. Chas. Bell, Red Radiance and Radiance offer a range of color that will be welcome and there are no finer garden Roses for America than these three.

**Mrs. Charles Russell, HT, (A. Montgomery, 1913)**—A grand forcing Rose. Stems three feet long, stiff and surmounted by grand rosy-pink blooms of largest size and build.

**Mrs. Charles Lamplough, HT, (S. McGredy & Son, 1920)**—Large lemon-yellow flowers of fine quality.

**Mrs. Farmer, Per, (Pernet-Ducher, 1919)**—Inside reddish apricot, outside deep coral.

**Mrs. H. D. Green, Per**—Color Reddish bronze, opening to flame and copper-pink; exceedingly free and fragrant; ample foliage of rich color, flowers on stiff, erect stems.

**Mrs. H. R. Darlington, HT.**—A Gold Medal variety of the British N R S. Color creamy-yellow; fragrant and very free. Perfect in form; a good grower.

**Mrs. Henry Morse, Per, (S. McGredy & Son, 1919)**—Of vigorous habit; of a lively pink, shaded salmon, deeper at base, with distinct Tea scent.

**Mrs. Henry Winnett, HT, (J. H. Dunlop, 1917)**—A seedling Rose of Canadian origin in color it is a bright shade of crimson, not so dark as Hadley and not so light as Richmond. The buds are long and well formed; a superb red Rose.

**Mrs. John Laing, HP, (Bennet, 1887)**—Soft pink, large, full, perfectly formed, free and perpetual. One of the very best H P Roses.

**Mrs. P. L. Baudet, HT.**—Color carmine-rose flecked with salmon-yellow, center darker. Flowers large and full; vigorous in growth; continuous in bloom. A unique two-tone Rose.

**Mrs. S. K. Rindge, Per.** (Howard & Smith, 1919)—Bud large, long-pointed, stained cadmium-red; flower large, cupper, semi-double, on long stem; lasting fragrant. Color deep golden-yellow, without tint of copper; becomes suffused with soft pink with age instead of fading. Foliage sufficient, large, leathery, glossy light green. Growth vigorous.

**Mrs. Taft**—See Antoine Rivoire.

**Mrs. Wm. C. Egan, HT,** (Howard & Smith, 1922)—The flower is pink in color—reverse of petals a pleasing tone of soft light pink, the interior deep flesh with a golden line at base of petals. Flowers very large, of good form. Vigorous grower, flowering profusely and continuously.

**My Maryland, HT,** (J. Cook, 1908)—Clear salmon-pink blooms of excellent form and fragrance, on strong and productive bushes.

**Old Gold, HT,** (S. McGredy & Son, 1913)—Vivid reddish-orange, with coppery-red and apricot shadings; strong mildew proof and free. Medium size; semi-double.

**Ophelia Golden, (Golden Ophelia), HT,** (B. R. Cant & Sons, 1919)—Yellow in center, paling slightly at the outer petals. A seedling of Ophelia possessing many of its characteristics.

**Ophelia Pink, (Wm. Paul & Son, 1912)**—Outdoors as well as in the green house this Rose has taken a high rank. Its blooms are large in size, full and perfect in form and appearance, and of attractive light salmon-flesh coloring shading to yellow. The plant is vigorous, reliable and persistent.

**Ophelia Supreme, HT.**—Ros-pink sport of Ophelia, with darker shading in center and yellow at base of each petal.

**Ophelia White, HT.**—Pure white sport. Growth somewhat stronger than pink Ophelia. Grand Rose.

**Orleans**—See Baby Orleans.

**Othello, HP.**—Deep crimson with maroon shading, strong and free. Another H P that's here to stay.

**Papa Gontier, T,** (Nabonnand, 1883)—Rosy-crimson; fine, long bud; free and strong.

**Paul Neyron, HP,** (Levet, 1869)—Deep rose, immense size, hardy and vigorous.

**Perle d' Or, P,** (Dubreuil, 1883)—Nankeen-yellow with orange center. Buds perfect.

**Phyllis**—See Baby Phyllis.

**Pink Frau K. Druschki**—See George Ahrends.

**Pink Gem**—See Mme. Cecil Brunner Rose.

**Premier, HT,** (E. G. Hill Co., 1918)—Dark pink flowers of full size, fine form, and pleasing fragrance, borne singly on stiff, thornless stems from a vigorous and robust plant.

**President Taft, HT,** (McCullough, 1908)—Deep, shining pink; large, full and upright.

**President Wilson, Per,** (Easlea, 1918)—A most delightful shade of shrimp-pink, reminding one of Willowmere. The flowers are very large, and they are freely produced upon vigorous, erect growths.

**Prince C de Rohan, HP,** (E. Verdier, 1861)—Rich, dark maroon-crimson; large full and vigorous.

**Prince d Bulgarie, HT, (Pernet-Ducher, 1902)**—Silver-flesh, delicately shaded salmon and coppery-yellow; full flowers, very freely produced.

**Prince E. C. de Arenberg, HT, (Soupert & Notting, 1909)**—Brilliant scarlet with dark shadings; full, free, large and upright.

**Queen Alexandra, Per, (McGredy, 1918)**—Faces of petals are vermilion with a deep orange base; reverses are deeply shaded old gold. An entirely new color combination. Free bloomer and fragrant.

**Queen Beatrice, HT, (Bissett, 1907)**—One of the very best bright pink Roses, the color being very clear, much the shade of Mrs. Robert Garrett.

**Radiance Pink, HT, (J. Cook, 1908)**—Brilliant, rosy opaline-pink; large, free and beautiful form, with sweet fragrance.

**Radiance Red, HT, (Gude Bros., 1916)**—The Washington Red Radiance. A glowing crimson sport of Radiance with all the magnificent qualities of the parent.

**Ragged Robin, or Gloire des Rosamones, C. (Vibert, 1825)**—Deep crimson, semi-double, free and constant. Free from disease. Used extensively for hedges and budding stock.

**Rainbow, T.**—Deep pink beautifully splashed and striped crimson. Long pointed bud same as Papa Gontier from which is sported.

**Red K A Victoria**—See Mme. Jules Grolez.

**Red La France**—See Duch Albany.

**Red Letter Day, HT, (A. Dickson & Sons, 1914)**—An exceedingly beautiful Rose of infinite grace and charm. Its velvety, brilliant, scarlet-crimson buds and fully opened flowers never fade. Awarded S. G. medal, NRS.

**Red Radiance**—See Radiance Red.

**Rhea Reid, HT, (Hill, 1908)**—Flower large and double; dark velvety red, a good garden Rose.

**Rose Marie, HT, (F. Dorner & Sons, 1918)**—This is a grand Rose of the very highest merit. A rich red that has come to stay, best described as a bright water-melon red.

**Sarfano, T, (Beauregard, 1879)**—Bright apricot with darker shadings in the bud, which is long and pointed. Free, upright and vigorous. Another of the old ones that will never go out.

**Sensation, HT, (Jos. Hill, 1924)**—Color of Hoosier Beauty with growth of Premier. As free as Premier.

**Shell Pink Radiance**—See Mrs. Charles Bell.

**Silver Columbia**—See Columbia Silver.

**Sir Thomas Lipton, HR, (Van Fleet, 1900)**—The best pure white Rugosa Rose. Strong and vigorous. Flowers perfectly double, pure snow-white. Fragrant.

**Soliel d' Or, Per, (Pernet-Ducher, 1900)**—Changing from orange-yellow to reddish-gold and nasturtium-red. Strong, upright growth.

**Souv de Chas. Laemmel, Per, (Guillot, 1919)**—Golden Yellow shaded pink. Flowers large and fragrant. Vigorous, free blooming and hardy.

**Souvenir de Claudius Pernet, Per, (Pernet-Ducher, 1920)**—Awarded the Bagatelle prize. Its color is a

definite and lovely sunflower-yellow, deepening in the center, and it retains this color indoors and outdoors, in bud and open bloom. The plants are of branching habit, with brilliant green foliage and few thorns, and the buds are produced on long, stiff stems.

**Souvenir de George Pernet, Per, (Pernet-Ducher, 1921)**—Very large, blooms Orient-red with carmine and yellow shadings. Vigorous in growth.

**Souvenir de Georges Beckwith, Per, (Pernet-Ducher, 1919)**—A greatly improved Lyon Rose, with its shrimp-pink, chrome-yellow and deeper yellow shades. Vigorous.

**Souvenir de H. A. Verschuren, HT, (H. A. Verschuren & Sons, 1922)**—Color is deep golden yellow. Flowers double, intensely fragrant, and come on long strong stems. A splendid addition to the yellow class.

**Souvenir de President Carnot, HT, (Pernet-Ducher, 1894)**—Rosy flesh, shaded white; large, fine form; semi-double.

**Star of France**—See Etoile d France.

**Sunburst, HT, (Pernet-Ducher, 1912)**—Deep cadmium-yellow with orange yellow center; large, full and beautiful form.

**Theresa, HT.**—Deep orange-apricot, passing to madder-pink with carmine splashes. As the flower expands it becomes veined flesh-pink, passing to silvery-pink.

**Tipperary, HT, (S. McGredy & Son, 1916)**—Clear yellow of "Melody" tone; pointed buds opening to a full rosette; long stiff stems. An Irish seedling of Mrs. Aaron Ward.

**Tip-Top**—See Baby Doll.

**Triomphe Orleanais**—See Baby Triomphe Orleanais.

**Ulrich Brunner, HP, (Levet, 1881)**—Cherry-red, very large and fine form. Large petals.

**Victory, HT.**—Glowing scarlet; bloom large, pointed on long stems; semi-double; a fine free-growing bedder; Gold Medal N R S.

**Viscountess Folkstone, HT, (Bennett, 1886)**—Large, perfectly formed flowers of creamy white and salmon-pink, slightly darker in the center. Free-flowering and excellent.

**Virginia Coxe**—See Gruss Teplitz.

**Wellsley, HT, (Waban Conservatories, 1905)**—Bright, soft pink; outer petals rose; reflex silver-pink. Fine form, upright.

**White Caroline Testout**—See Mme. C. Testout White.

**White Killarney**—See Killaney White.

**White Maman Cochet**—See Maman Cochet White.

**White Ophelia**—See Ophelia White.

**Willowmere, Per, (Pernet-Ducher, 1913)**—Color rich shrimp-pink, shaded yellow in the center, and toning to carmine-pink towards the edges of the petals. Vigorous growth, and erect, branching habit. Long carmined coral bud on long, stout flower stalks.

**Wm. F. Dreer, Per, (Howard & Smith, 1920)**—A beautiful Rose in all stages of development; is at its

best in the half-expanded flower. In expanding, are of a delicate silvery-pink. The base of the petals are of a rich golden-yellow which, at certain stages, give a golden suffusion to the entire flower, particularly brilliant early and late in the season. As we know this Rose in Hemet, it requires little imagination to classify it along with other good yellows.

**William Notting, HT, (Soupert & Notting, 1904)**—Bright rosy-cerise with deeper center. Large, full, free, with pronounced fragrance.

**William R. Smith, T, (Smith, 1908)**—Creamy-white with shadings of pink; a seedling from Maman Cochet and Kaiserin Augusta Victoria; beautiful in form and colors.

**Winnie Davis, HT, (Nanz, 1902)**—Brilliant apricot-pink with reflex lighter tints, making very handsome semi-double, graceful Rose. Buds long, fine form. Foliage clear, bright green. One of the best HT Roses grown.

### CLIMBERS

**Alida Lovett, HW, (Van Fleet, 1905)**—Bright shell-pink, with shadings of rich sulphur at the base of petals. It resembles Dr. W. Van Fleet but is of a much darker color and the foliage is even more beautiful; mildew proof.

**American Pillar, HM, (Dr. W. Van Fleet, 1902)**—Large single flowers, rosy-pink approaching brilliant carmine, white at center and golden-yellow stamens.

**Aviateur Bleriot, HW, (Fauque & Sons, 1910)**—Exquisite buds of saffron-yellow shaded apricot, opening a lighter shade, and with delightful magnolia fragrance. Blooms in clusters on plants of good growth, with fine glossy foliage.

**Banksia White**—Small white flowers in great profusion, making one of our most popular climbers.

**Banksia Yellow**—Same as the white except the color is clear yellow.

**Bess Lovett, HW, (Van Fleet, 1905)**—One of the best Roses grown by Dr. Van Fleet. Produces many large and fragrant flowers of clear, bright crimson double, full, cupper, and of lasting quality. Though resembling Climbing American Beauty, it is much superior to that variety by reason of its brighter color and its habit of not holding its dead blooms.

**Boquette d' Or**—Foreign description says "Clear yellow, copper center, full, free and hardy. A fine variety of Gloire de Dijon type." Free from mildew.

**Cherokee Pink**—About the same in form and size as White Cherokee. Color bright, clear pink.

**Cherokee Ramona**—A better grower than the pink. Outer side of petals quite red when first opening.

**Christine Wright, HW, (Hoopes Bro. & Thomas Co., 1909)**—Heavy dark green foliage which is exempt from disease. Large, full flowers borne singly and in clusters; perfect in form; beautiful in bud and in full expanded flower; color bright, wild-rose pink.

**Crimson Rambler, P, (Turner, 1893)**—Too well-known to need description.

**Cibg Able Chatenay, HT, (Howard Rose Company, 1918)**—Is a strong growing sport from the well-known bush variety with flowers and foliage identical.

**Cibg American Beauty, HW, (Hoopes, Bro. & Thomas Co., 1909)**—Heavy, strong grower, hardy everywhere. Color rich red, passing to crimson. Very popular.

**Cibg Baby Rambler, P, (Messman, 1911)**—A very strong, heavy grower with same style foliage and color as the well-known and popular bush Baby Rambler.

**Cibg Belle Seibrecht, HT.**—Imperial pink, large and beautifully formed. Very prolific bloomer and with sweet fragrance.

**Cibg Cecil Brunner, P.**—One of the strongest growing Roses we know of and it is a sport from the dwarf bush variety of this name. Style of foliage clear pink; baby size flowers so popular with June and color throughout same as the bush. Bright, brides.

**Cibg Caroline Testout, HT.**—Another strong grower with foliage and flowers same as bush, from which it is a sport.

**Cibg Duchess of Wellington, HT., (Howard Rose Co., 1924)**—Same as bush every way.

**Cibg Etoile de France, HT, (Howard Rose Co., 1916)**—Very vigorous. Always in flower throughout the heat of the summer and undoubtedly the best hot-climate climber on the list.

**Cibg General McArthur, HT, (Howard Rose Co., 1918)**—True sport from the popular variety and destined to be a very desirable red climber.

**Cibg Gruss an Teplitz, HT, (Storrs & Harrison, 1911)**—A perfect sheet of crimson when in bloom. It's the same as the bush Teplitz.

**Cibg Hadley, C. T.**—Same as the bush variety so widely known. A true sport.

**Cibg Hoosier Beauty, C. T., (Howard Rose Co., 1918)**—Deep crimson with darker shadings just like the bush variety and is strong and vigorous. We believe this is one of the very best Hybrid Tea climbers ever produced.

**Cibg Jon J. L. Mock, HT, (Howard Rose Co., 1923)**—A strong climbing sport of a wonderful variety. Destined to be very popular.

**Cibg K. A. Victoria, HT, (A. Dickson & Sons, 1897)**—Pure white, shading at base of petals to primrose. A strong grower with same style of foliage as the bush.

**Cibg Killarney, HT, (Geo. Reinberg, 1908)**—Same as the bush. Too well-known to repeat.

**Cibg Lady Hillingdon, T.**—We have seen this variety two years in the field and believe it is a vigorous grower and in every way as desirable as the bush.

**Cibg Louise C. Breslau, A. B.**—True climbing sport of a variety that has won its way to the very top rank. Flowers are identical with the bush variety coral overlaid with orange.

**Cibg Maman Cochet, T. (Howard Rose Co., 1918)**—Another true sport of the bush variety so well

known. Fortunately this sport is a strong grower.

**Cibg Maman Cochet White, T, (Needle, 1911)**—Same as the bush. White, tinted pink. Where heavy foliage is desired use this variety.

**Cibg Mrs. Aaron Ward, HT, (A. Dickson, 1922)**—A climbing sport of this well know yellow variety. Vigorous and remarkable free blooming. Flowers identical with the bush variety in all respects.

**Cibg Mrs. George Shawyer, HT, (Howard Rose Company, 1918)**—A peach-pink climber of this beautiful variety will always be in great demand on the Pacific Coast and in the South. Flowers and foliage same as the bush.

**Cibg Ophelia, HT.**—The exact counterpart of Ophelia except it is a vigorous climber, and one destined to become a favorite for outdoor planting.

**Cibg Safrano**—See Reve d' Or.

**Cibg Souv Wooton, HT, (Dingee, 1899)**—A rampant climber with deep crimson flowers of large size.

**Cibg Sunburst, HT, (Stuart, Low & Co., 1914)**—Same as the well-known bush. It's strong and vigorous and quite hardy. Recommend it to your customers every time.

**Cibg Wellesley, (Howard Rose Co., 1920)**—Another choice pink climber that will always be in demand.

**Cibg Winnie Davis, HT, (California Rose Co.)**—Same as the bush. Strong grower with heavy foliage.

**Cibg Wm. F. Dreer, HT.**—Same as the bush variety.

**Dorothy Perkins pink, W, (Perkins, 1902)**—Beautiful deep pink. Too well-known for further description.

**Dorothy Perkins Red**—See Excelsa.

**Dorothy Perkins White, W.**—Same as Dorothy except color clear white. Fills a long felt want for hardy white climber.

**Dr. Van Fleet, H. W. (Van Fleet, 1910)**—Flowers measure four inches and over in diameter. The center is built high, petals beautifully undulated and cupped. The color is a delicate shade of flesh-pink on the outer surface, deepening to rosy flesh in the center.

**Duchess d' Auerstaedt, CT, (Bernaix, 1887)**—A very desirable large, full, perfectly double, strong growing variety. Color vivid Nankeen-yellow. In some sections it is considered a better Rose than Marechal Niel.

**Emily Gray, HW, (Williams, 1918)**—With golden yellow buds, long, tapering and elegant, opening to semi-double flowers of large size, fragrant and a delightful buff shade. The foliage, glossy and crinkled. The young shoots deep reddish brown.

**Excelsa, W, (Red Dorothy Perkins), (Walsh, 1908)**—Color intense deep crimson. Called the Red Dorothy Perkins.

**Flower of Fairchild, HM, (Ludorf, 1908)**—A counterpart of Crimson Rambler in every respect, except that it shows ever blooming tendencies.



**Gold of Ophir, or Beauty of Glazenwood, HN, (Fortune, 1845)**—Color combination of copper, carmine and salmon. A most beautiful combination. One of the popular climbers in Southern California.

**Hiawatha, HW, (Walsh, 1904)**—Single flowers of deep, intense crimson, shading to celar white at the base of the petals, and lasting long, as well as coming late, on a vigorous plant, attractive, glossy, light green foliage.

**Lamarque, N, (Marechal, 1830)**—White, slightly shaded lemon. Large, full, very sweetly scented. One of the best climbers for heavy foliage.

**Lady Gay, HW, (Walsh, 1905)**—Delicate pink, slightly larger than Dorothy Perkins which it greatly resembles.

**Miss Messman**—See Clbg Baby Rambler.

**Marechal Neil, C. N, (Pradel, 1864)**—Immense deep golden-eylow; very fragrant climber.

**Mary Wallace, HW, (Dr. W. Van Fleet)**—Large, glossy foliage, blooming with great freedom in Spring and bearing a considerable number of fine buds in summer and fall. Flowers very large, well formed, semi-double, of a bright clear rose-pink, with salmon base.

**Mme. Alfred Carriere, N.**—Pure white, slightly tinted yellow at base. Very free, very fragrant and very strong. Here they make splendid tree Roses.

**Mrs. Robert Peary**—See Clbg K A Victoria.

**Pauls Scarlet Climber, HW, (Wm. Paul & Son, 1916)**—The most brilliant Rose known because of its clear, vivid shining scarlet in large, semi-double flowers which remain unusually long and in good condition on the plants. The flowers never turn blue, but retain their intense coloring until the petals fall. May be used either as an ordinary climber or effective pillars which are a flame of scarlet.

**Red Cherokee**—Cherokee Red.

**Reine M. Henriette, Cl T, (Lecet, 1878)**—Rich and glowing crimson, retaining color in heat of summer. About our best climibng red.

**Reve d' Or, CN, (Ducher, 1869)**—Buff yellow, free bloomer, very pretty. Strong grower; will do well in any situation.

**Roserie, HM, (Witterstatetter, 1917)**—Like Tausendschoen in form, thornless plant and habit of growth, blooms of an even shade of deep pink or carmine.

**Shower of Gold, HW, (Paul & Son, 1910)**—Deep golden-yellow, very double, free and lasting. Glossy bronze foliage.

**Silver Moon, HW, (Van Fleet, 1910)**—Pure white with clear yellow stamens large, free. Glossy bronze-green foliage.

**Tausendschoen, HM, (Schmidt, 1906)**—Soft pink, flowering freely in large clusters; vigorous and almost free from thorns.

**Thousand Beauties**—See Tausendschoen.

**White Banksia**—See Banksia White.

**Wm. A. Richardson, CN, (Mme. Ducher, 1878)**—Copper-yellow, flushed carmine. One of the very popular yellow climbing varieties.

**Yellow Banksia**—See Banksia Yellow.

## ABBREVIATIONS USED

Hybrid Perpetual, HP; Hybrid Rugosa, HR; Moss, M; Bourbon, B; Dwarf Polyantha or Baby Rambler, DP; Teas, everblooming, T; Banksian or Lady Banks, Bks; China or Bengal, C; Hybrid China or Bengal, HC; Polyantha or Fairy, Pol; Hybrid Polyantha, H. Pol; Hybrid Teas, everblooming, HT; Climbing Polyantha or Ramblers, CP; Climbing Hybrid Teas, CHT; Trailing, Tr; Climbing Tea, CT; Hybrid Wichuraiana, HW; Climbing China or Bengal, CC; Climbing Hybrid or Bengal, CHC; Climbing Hybrid Polyantha, CH Pol; Climbing Bourbon, CB; Hybrid Tea Wichuraiana, HTW; Climbing Noisettes, CN; Climbing Hybrid Noisette, CHN.









