



SYDNEY WOOL SELLING BROKERS' ASSOCIATION CONTAINING THE MARKET REPORTS OF ALL THE MEMBERS OF THE FAT STOCK SALESMEN'S ASSOCIATION OF SYDNEY
And the Only Trade Journal Officially Recognised by them.

No. 457.—Vol. IX.

SYDNEY, FRIDAY, JANUARY 6, 1899.

Registered at the General Post Office, Sydney, for Transmission by Post as a Newspaper.

THE LEADING FIRE OFFICE IN AUSTRALIA. ANNUAL INCOME - £1,841,528
J. ST. VINCENT WELCH, Underwriter

COMMERCIAL UNION

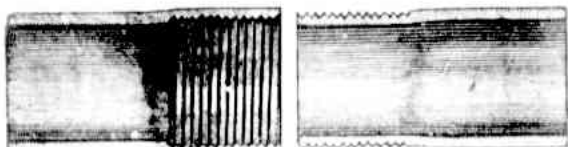
HUNTER ST., SYDNEY. **MARINE and FIRE ASS'CE CO. LTD**

A. & J. STEWART & MENZIES, LIMITED,

STEWART'S "RUSSIAN" BRAND

GLASGOW and LONDON.

LAP-WELDED STEEL PIPES.



ARTESIAN WELL-BORING TUBES.

GAS, WATER, AND STEAM



TUBES AND FITTINGS.



For Water Mains. All sizes to 36in. dia.

LARGE STOCKS OF TUBES AND FITTINGS AND STEEL PLATES HELD IN SYDNEY.

Representatives in Australia: **MACWILLIAM & DENOVAN, 82 Pitt-st., Sydney.**

SALT FOR SHEEP.

STOCKS IN SYDNEY, NEWCASTLE,

EMU BRAND.

ADELAIDE, MELBOURNE, BRISBANE.

HENRY BERRY & CO., Sussex St., Sydney.

THE O'DWYER PATENT TANK SCOOPS

Clean all Tanks and Dams at Threepence the Cubic Yard

Sole Agent: **G. N. GRIFFITHS, 389 GEORGE STREET, SYDNEY.**

Apply for Illustrated Descriptive Pamphlet.

GIBSON, BATTLE & Co.,

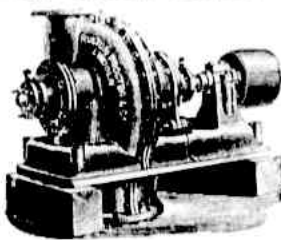
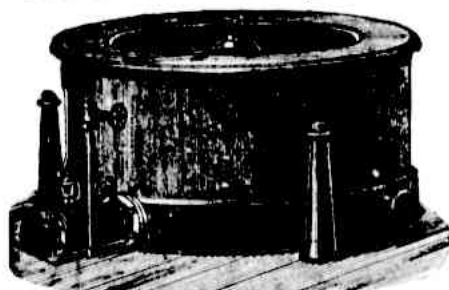
82 PITT STREET, SYDNEY, Sole Agents for

BROADBENT'S

Direct Steam-driven

HYDRO-EXTRACTORS

FOR DRYING WOOL, SKINS, MEAT-REFUSE, SUGAR, &c.



RUSTON, PROCTOR & CO., LTD.,
ENGINES
CENTRIFUGAL PUMPS.

PORTABLE. FIXED. TRACTION.

PEELE AND CO., Telephone No 358.
Bank Chambers, Jamieson Street, Sydney,
Pastoralists' Agents in Every Branch of the Industry.

ADVANCES ARRANGED AGAINST WOOL CLIPS.

LOANS on FREEHOLDS and Station Properties negotiated at Lowest Current Rates.

LAKESIDE WOOL SCOURING COMPANY.

WRIGHT & ABBOTT, Commission Wool Scourers and Felmongers, 5 Spring Street, Sydney. The Lakeside Works, which are entirely new, are situated on the Botany Water Reserve, the former sole source of water supply for the City of Sydney. Water in unlimited quantity, and of magnificent and unvarying quality is thus ensured. The washing appliances include an Eastwood and Abbott's Patent Wool-washing machine (the only one in the colonies), and Quirk and Abbott's Patent Spray System, which leaves all wool large and lofty, light and flaky after treatment, and turns out the largest lots in the quickest possible time. All wools carefully sorted and Graded by experts prior to washing. Special Attention being given to unsightly and faulty lots. All consignments fully insured while in course of treatment. Special rates quoted for Felmongering large parcels of Sheepskins. Correspondence Solicited and Consignors in particular invited. Bankers—Union Bank Australia.

Holdsworth, Macpherson, and Co.

- Silver and Electroplate
- China and Glassware
- Sports and Pastimes
- Fancy Leather
- Basketware
- Cutlery
- Tools
- &c., &c.



CHRISTMAS PRESENTS.

NEW YEAR PRESENTS.

Station Requirement
Squatters' Supplies
Farming Implements
AND Harvest Machinery.

WRITE FOR CATALOGUES, SPECIFYING CLASS OF GOODS REQUIRED. Post Free on Application.

HOLDSWORTH, MACPHERSON, & CO.,
General Ironmongers,
252 GEORGE STREET, SYDNEY.

FRY'S MALTED COCOA. More Strengthening than Any Other.