

中華民國二十五，二十六，二十七年

西歷一千九百三十六年，七年，八年

上海盲童學校報告

校址 上海虹橋路二百九十號

創辦人

傅蘭雅博士

基金保管委員會

郝萊師先生

費吳生先生

華峯春先生

畢禮克會計師

執行校董會

郝廉先生

奧利福先生

力宣德先生

巴師克先生

陸梅僧先生

朱少屏先生

陳鶴琴先生

朱恆璧醫師

喬文南南夫人

(美國婦女會代表)

陳梁佩琳夫人

(中國婦女會代表)

費萊德克夫人

(英國婦女會代表)

施博羣先生

(上海扶輪會代表)

總辦公處職員

傅步蘭先生 (校長兼英文書記)

何子健先生 (副校長)

汪鏡潤先生 (福啞學校副校長)

傅羅蘭女士 (校長室助理員兼教員)

徐玉潔先生 (辦公處助理員兼教員)

鄭俊先生 (舍務及膳務管理員)

毛詠月女士 (保姆)

教務處

范福寶先生 (教務主任)

傅仕德先生 (英文教員)

王得寶先生 (教員)

昌導予先生 (音樂主任)

吳少榮先生 (音樂教員)

上海圖書館藏書



A541 212 0012 3699B

一九三六年校長報告

二

本年度正爲 敝人服務盲人教育二十五年之期回憶在一九一一年六月間奉先君之命籌備創設本校惟自知對於此種專科學識素鮮研討何敢冒昧從事以遺誤他人子弟而負先君之意因特入美國加尼福尼亞州盲啞學校實習六個月承克司先生與富南虛博士熱心指導能在此短時間內對此種教育略有心得惟恐所見不廣因再赴阿弗不羅克地方盲人學校繼續見習五個月承校長培力特博士逾格指導再後又赴波司頓城潘金司盲人學校考查三星期得識校長愛倫博士並因特殊機會得與若干從事盲人教育多年富有經驗之人十交接受益無盡而樹立本校念五年成績之基礎焉

惟本校至一九一二年十一月始正式成立則明年爲本校創設念五年紀念之期深盼屆時舉行一次擴大而隆重的典禮以留永久之紀念

今歲校內各部均有顯著之進展尤以工藝部爲最此皆因承各界人士所給之熱烈扶助與深切之同情所鼓勵而成也

教職員 今年爲促進工效起見職員方面略有變更宿舍管理員汪努一先生已離職新聘教員陳女士宋恭父先生更希望能在最近期間再聘一相當教員使小學更見完備

在上年報告中曾經言過如加收新生念五人經費所需增加之數亦無多而本年度盲人人數較上年間反缺一人

其情形如下深望在明年舉行紀念典禮時人數能達預期之目的

一九三六年正月 人數九十一人 新生 男八人 女三人 工藝部三人 共十四人

離校 男七人 女一人 工藝部七人 共十五人

現在校之男生三十六人女生二十六人工藝部十八人盲教員及工作者十人

校舍 現因一部份校舍爲福啞學校所用因此有種種問題發生深望在下半年暑假後能爲啞校別謀安置之法至部收回爲盲校使用則更便利矣

校舍建築未久而地板攔柵已見腐朽經李錦沛建築師考查報告因地基潮濕過重所致若添設溝渠所費過巨因於牆脚添闢氣洞以資盲達全部門窗牆壁外表均加以油漆粉刷地板修建加高並將西南走道放寬爲求啞生出入安全起見由租界工部局於校門兩傍樹立車輛慢行標記以免危險

健康 一部學生除不易治療之凍瘡外並被瘧疾及流行感冒所侵襲幸均安全惟因校中無正式醫室之設備及專門護士人才故管理員對多數學生患病時不無困難有學生一人患肺病已送醫院診治另一幼年學生不幸患心弱症去世校醫蘭斯曾爲全體學生檢驗身體惜因其赴美未竟全功倘學生能有機會施行身體檢查則此不幸事件當可避免矣承工部局醫生來校爲全體學生佈種牛痘

訓育 本校學生均係住讀故每一宿舍必有一管理員負訓育指導課餘一切事宜之責與課程並重



教育 本校編製自幼稚園至初中課程悉照部訂其他學校相等現有學生六十二人一年級九人二年級六人四年級十一人五年級甲九人五年級乙十人

初中二年級五人特別班學生十二人在去年畢業小學之七人除其中一人歸家另覓工作外餘均轉入工藝部此級之畢業典禮於今年春季展覽會時補行請吳鐵城市長夫人給憑以前畢業生中現有數人以算命爲業據云渠等曾受數年教育故學習時進步極快卽對命理亦較他人易於領悟故數年教育對彼等助益甚大云

音樂 盲人對於藝術祇有音樂與文學二科易學而性近本校學生課外對音樂最感興趣本校對此甚爲重視本年有五十九人學習唱歌二十九人學習風琴四人學習鋼琴其外尚有十二人樂隊一班另初習者六人笛鼓隊一班計十人本校樂器有風琴十四架鋼琴兩架收音機兩架留聲機一架樂隊樂器二十一件而唱詩班最有成績爲各界所稱許吳少榮君本年考取英倫三一音樂院高級榮譽文憑本年承鄧巴登夫人贈箱式風琴一架中西女中奧立夫女士借給音樂書多種強生女士爲唱詩班檢選相當歌譜

圖書室 性靜之學生對圖書室視爲樂園年來學生對於課外讀書已成普遍之習慣一年中在室中讀者不計外有六十人借出書籍計一千有另冊而流通部借給南京上海蘇州青島漢口福州雲南香港甘肅等地讀者二十二入本年書籍略增現計有美國點字書一七五種計二百七十四冊英國點字書一〇四種計三百十六冊中文點字書五五七本音樂書五十五種九十六冊本年承贈送書籍者之台銜列下英國潘金司官啞學校盲字報一一六本

西格那報以陸明烈特報警者消息報利得爾待及司特報二份基督科學報又紐約盲人事業雜誌盲人事業雜認盲人教員雜誌英國套區報及其他各種盲人書報與愛倫先生贈書十四本傅仕德先生贈音樂字典一部英國抄書會贈書三冊並承英美兩國圖書館借給各種書籍

宗教 本校學生對於宗教深感興趣每日早晨及禮拜日之禮拜照舊外禮拜一二五之祈禱會及勉勵會大部學生均自動加入而女生在其自己之宿舍內每晚另有一個祈禱會本校盼望在來年能請得為基督工作熱心人士來校對學生作有係統之演講教義之工作

盲人事業欲使社會人士普遍的認識而感到興趣乃本校宣傳工作主要目的之一故在本年外出表演計二十一次供獻給一萬人以上觀覽其他募捐日春季遊藝會秋季展覽會聖誕節臨時販賣部及參加英國婦女會英國兒童會展覽以上各種宣傳表演均需相當時日之籌備與練習然本校教職員平常工作極多已無餘暇而學生又須防礙課業時間雖有種種困難均為師生們熱誠精神所克服殊堪傾佩也文字宣傳方面印有各種關於盲人事業之單張及小冊分贈各界並贈去一九三五年報告書二千冊此種工作不但在中國即對英美兩國亦收穫相當之效果也

來賓 來賓中不但為上海中西人士並有中國各省與各國遊歷團共團體六十二計一二六五人個人參觀者計一一五八人上列人數未將遊藝展覽等會到會人數計入在中外貴賓中所要特別提起者為美國紐約盲人事業

界巨子(燈塔會會長)梅特爾夫婦對本校工作成績深加贊許

本年春季遊藝會係假座靜安寺路中國總會舉行到上海中外各界聞人約五百人並請吳鐵城市長夫人補行盲啞兩校畢業生給憑禮秋季展覽會則在本校分二日舉行第一日招待平日贊助本校之各界人士到者五百餘人第二日到團體與個人一千五百餘人此次展覽除將盲啞學校成績陳列於各教室並在茶會之後表演音樂體育等節目以饗來賓

工藝品臨時販賣部 在聖誕節前承哈同夫人將南京路一九一處市房免費借給本校工藝部臨時販賣出品共售出一千餘元時間爲十二月十二日至十六日並蒙贊助諸君協助辦理一切

啞校 雖在擁擠逼狹情形之下啞校因無相當校舍仍居盲校現有男女學生六十四人但凡來參觀者對於啞生之工作亦深感興趣惜因人才與校舍及儀器所限未能盡量發展即如啞生缺少藝術作業室最爲顯著之一倘能啞校移至合適之校址則兩校之發展或可更進一步也

慶祝聖誕 今年聖誕給與學生最大之興趣者莫如美國海軍第四艦隊官兵於聖誕前一日請盲啞全體學生吃西餐而餐時由該軍軍樂隊奏世界名譜尤以爲幸者浦賴耶大佐親自蒞場招待也此外如扶輪會仍循舊例贈玩具及糖美國學校及禮拜堂贈玩具及衣服中西女中贈數十件衣服聖瑪利亞贈購菜肴之款

大夏大學社會學院 該院最近兩年曾由步蘭擔任盲啞教育課程這種工作對本校宣傳方面很有功效惟因步

蘭無暇兼顧已於今夏中止希望能有餘暇將所教之講義加以整理成冊以供做爲將來之課本
調查全國盲啞學校及團體 是種工作對於推進盲啞教育深有功效且可連絡同工者之情感雖第一次難免無
遺漏深望閱者之指正以求下次更見完備所印之三百冊已寄贈所需要此種調查記錄之團體與個人此次印刷
費係由舊金山友人所捐贈

工藝部 今年工藝部已顯現開展之曙光全年營業售出品價值在一萬元以上存貨尚有六一九四元得工資之
盲工九人全年得工資一千零五元此外尙有學習盲生九人不久亦可照得工資矣全年贏利在二千左右惟管理
部及水電未計算在內希望能設法添辦數種新的工藝使多數盲人均有工作可做則可達到成爲一近代式之中
心工藝部矣現所最需要者爲等待已久之售品專用之房屋

點字印書部 點字禮拜週刊及燈塔月刊兩種雜誌仍照常寄贈各省市之盲人團體或個人閱讀此種刊物人
數約千餘人據彼等來函均認爲精神上最需要之糧食云本年計印點字書籍八八九本售出六一九本計價一百
七十二元一角新製之大小鉛板目錄如下

孔子故事三十七頁

暗中之光二十一頁

聖道工作 九頁

暗中摸索一百二十四頁

初級風琴練習三十頁

唱歌集四十四頁

共製鉛版大三百十九小五百九十八共用紙大號三萬零四百七十一張小紙七萬九千一百三十九張其外又爲福警會代印席勝魔記九千八百張又製成點字普天頌讚版六十首並着手譯印歷史故事

誌謝 本校因承中西各界仕女直接與間接所給與之愛護與贊助始能進步至今日若欲一一舉以誌謝實有所不能惟有銘諸五衷耳在今年遊藝會展覽會募捐日聖誕臨時販賣部等會期中承各界光臨指導及中西童子軍與工部局中西巡捕之贊助而臨時販賣部承哈同夫人電力公司遠東清潔公司捐贈各費及其他惠贈衣履用品舊雜誌食物等均感謝同深

一九三七年校長報告

本年上半年本校一切工作均照常且很順利進行全校師生均極其興奮用其全部精力預備於十月末舉行本校二十五週年紀念典禮屆時當將本校念五年來之成績供獻於社會及熱誠愛護本校各界人士之前至六月底暑假期屆凡有家庭或能以歸去之男女生均已離校尙有男女盲生四十餘人留校今歲本校成立念五週紀念在敝人尤感興奮尙有二事適逢其會其一爲愚夫婦結婚正值念五週又爲敝人六十賤辰及來華之時期也

本校工藝部期待已久之陳列室因美國舊金山之友人爲記念其尊人特捐一部份建築費得償宿願於六月底全部完工內中陳列了最新式優良精美爲盲人所製成各種傢俱及籃子等

啞校校址建築之計劃已成具體化卽以盲校女生部南面之餘地再添購東面之地皮三畝以爲基址所需建築費承啞生家長担任代募三分之二其餘三分之一則由本校校董會小組委員會担任之擬於盲校紀念會期前勸募完成

暑假期間曾將本校一部分校舍借給上海女青年會做爲該會所辦之夏令工女讀書營成績美滿給與若干青年工女一種精神上之調濟與娛快也本校下學期一切計劃已爲八一三之炮聲所毀滅而槍炮與飛機炸彈等之聲響給與吾人精神上之紀念當終身難忘且租界各馬路上數千失去所有一切的逃難者之困頓情形怵目傷懷可悲實甚因領事館與巡捕房之勸告於八月杪將女生移至中西女中暫住承該校代理校長概允借屋甚可感也愚夫婦亦同時移居於海格路惟間日仍赴虹橋路儘可能辦理應辦之事時適暑假教員均休假在家尙有管理員與男生仍住校中在此種危險難困之境地給盲人一種精神上之安慰工作殊不易也

不幸內子忽得嚴重之痢疾症雖盡我們所能盡之醫藥的責任然天意難迴渠於十月二十五日竟與世長辭享受他永久之安息矣時局嚴重在喪期中亦無暇爲死者悲緣戰區已於次日延至本校之區域當將留校之盲人於緊急中移入租界以至彼等祇能攜帶最簡單隨身衣履幸承內地會主幹格浦先生立允以房屋數間爲盲人寄居之所而副校長何子健先生仍冒險攜三校役留居校中至三日後已有炮彈降落時始忍痛與可寶貴之校舍別離將其命運付諸主宰之神矣

在此星期六日原爲本校預定舉行念伍週年紀念典禮之期是日下午愚於租界西區高處瞭望本校之屋頂與牆壁已彈洞累累日期未改變而吾人所擬以此日爲盲啞事業最新發展之初期恰反成爲念五年來艱悴所成就之根基的毀滅之期耶

兩星期後始得經過防線回至校中察看見有三十三枚炮彈穿過各部房屋並有五十餘枚落於園中擊爲深潭此種慘境雖屬可惜但倘能立時由吾人自行管理則所受之損失不過些微外表而已然不久爲軍隊所佔據其後之損失則十百倍於爲炮彈所毀損者矣

此後曾數度回校探視至環境許可時請由巡捕房派二司閹印捕前往看守房屋將四週籬笆及能以關閉之窗門加以整理至聖誕節後一日愚離華赴美一以休息疲乏之身且謀爲本校籌募復興之經費

聖誕前一日美國第四艦隊仍循舊例以豐富之西餐宴請盲人而盲人在此逃難之時得此享受使之知世界尙有光明之境地故感謝之忱較諸往歲更深切也

在這危困時期承各界種種之扶助未克一一誌謝至以爲歉尙希恕宥至於本校此次雖損失重大但深信有諸君之愛護必能於遺留之根基上再創新世界而光大之以爲中國盲啞謀幸福也

記 念

尤不幸在這一年中本校董事有四人先後去世

裴迪克女士

龐富灼博士

唐紹儀博士

王一亭先生

裴迪克女士爲本校最忠誠之基金董事之一在念六年過程中對於本校之事業無時去懷

龐富灼博士爲董事會二十年之老會員對本校事業指導所受之助力極多

唐紹儀博士爲本校最先之董事在創立時所供意見至多爲一熱心盲啞教育者

王一亭先生爲最著名之大慈善家他爲世界殘廢與不幸者之救星因其對於盲啞之熱誠使同仁受到深刻之感

動茲不幸與世長辭世界更從何處得再見如此長者耶

一九二八年校長報告

一一一

在去年下半年可謂是我們生命過程中最危險最難困之時代想諸君必有同感自秋初不幸事件在上海發生而本校僻居滬西且有一部女生留居在校幸承中西女子中學代理校長慨允將該校宿舍一部借為本校學生暫時避難之所至十月間戰事日近當將尙留居在校之男盲生移入租界時間可稱確屬間不容髮因不數日校舍及校園已大部為炮火所毀損矣至十一月間所殘留之房屋被軍隊所佔據後內中所有物件無論為盲生或同人者非被摧毀即無蹤跡矣在本年起始時凡無家或有家歸不得之男女盲生承內地會總幹事之愛心讓一部份房屋為棲身之所而該會中西人士均仁愛的對盲人寄以同情使之得到很多的安慰而學生們雖住在這很狹小並且無床鋪的光滑水門汀上桌椅均無被褥也很缺少幸有少許稻草墊於下面這也可稱慶幸的了其時食物昂貴異常飲食方面不無困難然而在校之師生處斯境地似無更求進步之可能然一部份之課程並未因此而中斷

因內地會收回房屋之故經董事長商諸同仁第二醫院院長麥克那根博士承其允以一座大屋之一部份讓盲生遷入居住即於七月廿八日移居當購置帆布床及棹橙等用具地方既寬暢生活即較舒適一切均可繼續進行矣去年十一月應上海瞽目院董事會之請代為照看該院十個盲人緣該院本在南市被迫離其居所當在極司非而路賃屋一幢並將本校工藝部盲工十人一同遷入藉此稍減在內地會之擁擠至本年十月三十一日此一部份亦

遷併於白利南路三十七號同住矣

本校爲滿足盲人求智之志願起見於十一月一日起儘可能簡單的恢復了他們大部份的學業除原留校之男女生並有一部份去年暑假歸去之學生亦再來校肄業因此本校已建立了將來工作之中心基礎矣而工藝部亦已小規模的復業因此十二個盲工本依此爲生今即使每日祇有一二小時之工作亦較終日閑居爲佳也

本校茲又重建新的生命我們很相信有我們的熱誠的董事會諸位董事及同情我們的各界人士之贊助在這一年半以來所失去的一切在不久的將來當能恢復舊觀而無疑

因募捐事於一九三七年十二月二十六日由華赴美美國爲期約九個月初由滬直達舊金山在家姐處住六個星期作身體上必要之修養及參觀盲啞學校與機關後至紐約晤老友海倫克拉博十承其允許出名具函爲本校募捐因此募捐之舉已樹立堅強之基礎即轉道赴英倫晤小女羅蘭渠因蒙英國皇家盲人事業會幹事依格西先生之介紹入英倫盲人學校見習最新之盲人教育時適三月之期告滿留居月餘後攜之回至紐約

時美國顧問會幹事愛迪格魯已代將募捐函及關於本校一切事業與所需要者之圖畫小冊印成更承數所同情中國盲人事業之募捐機關供給應寄函之人名與地址計共發出一萬三千份結果募得美金八千餘元除一切印刷郵資手續等費所餘足敷校舍之修理及校具之置備

依此次之經驗深知英美兩國無論團體或個人對於中國盲人教育都是熱烈的同情與誠懇的贊助故能得此良

果因此對於協助募捐之人士及機關實深感謝予現正擬對於美國各盲啞學校發出一封呼籲之函希能募得今年不敷之經費

校舍因戰事所受損壞之情形 本校所受炮火損壞之情形極重凡行經虹橋路之人士經過校門即可一目了然損壞程度之嚴重矣在一九三八年正月由克那克及惠賴兩君費旬日之時間詳查之下其結果所具之報告如下「學校之地址正居於火線之內在調查時殘餘之房屋正被軍隊所佔據其損壞原因如下

A 軍隊佔住之問題 此屋因爲軍隊據爲特殊之用途

B 因炮火損壞情形 每座房屋均曾爲炮彈所擊中共計三十五枚之多以至屋頂牆壁走廊等或洞穿或傾斜此外從場地上所見之彈片更證明有多數槍炮彈及炸彈落於各屋左近以至未壞之牆壁與窗門亦均破損不堪

C 受搜索之影響 以至一切廚櫃均被毀壞開啓內藏各物狼藉遍地

D 因氣候與水之關係 因風雨由破壞之屋頂牆壁門窗浸入以至樓板與地板均須大多修理

E 因無人管理 爲缺乏通常之整理以至易於加重損壞之程度校園中約有五十餘槍炮彈之遺跡然其加諸樹木花園之破損極微而大部係被人工有意之摧殘如任意伐樹爲燃料等則非有巨款不易恢復舊觀也云云」

校舍之修理 現校舍及花園已大概修理完成惟油漆與粉刷當俟諸春假之後此次據營造者之報告屋瓦用去七千張以上玻璃用去三千餘塊由此可見損壞之巨矣其賬略如下

課室廚房及第三宿舍 一千八百六十四元一角一分

辦公室 一千六百四十元

清除垃圾工資 一百二十五元

電燈路線修理 一千四百三十四元

配置電燈具 二百元

除上列以外之房屋其餘各部房屋內外修理及籬笆八千七百四十七元

上項部份加賬 三百九十一元

自來水管修理估計 一百元

校園整理清潔估計 一百元

全部油漆粉刷 五千元

看守空屋印捕工資 一千四百四十元

修理爐灶 一百元

總計二萬一千一百四十二元一角一分

全部用具及儀器大部份已損失即存者亦多破壞估計修理添置及盲人自有者在內約需六千元

衛生 本年度因宿舍不良關係不無影響於健康致有數人患痧子而傷風與發熱人數亦超過往年患脚氣者有十五人內以杭州天主堂修道院送來習工者一人爲較重已送至上海天主教醫院診治矣代管之瞽目院有兩老人則因痢疾死於工部局醫院更有杭州省立救濟院送來兩女生因患肺病其一已去世其一現在同仁第二醫院肺病院內治療而本年度因經濟關係每日祇兩粥一飯雖足以維持生命而營養力難免不足此亦多病原因之一我們十分感謝內地會及同仁第二醫院諸位醫師對於本校有病學生之治療及種牛痘與打傷寒針同防疫針在十二月間有一女生患輕性天花當送入工部局醫院治療經過良好更幸並無第二人患此

教職員 雖留校者人數很少然而對於薪水除何先生與毛師母外都未克付全薪而應做之工作並未停頓在事諸君辦事之精神甚可佩也范先生在家教普通學生傅先生與吳少榮亦得同樣之工作而教職員在虹橋路損失去所有的一切深望董事會能補償之因渠等既無薪水又遭損失其經過這一時期是非常困難

盲人 本年度盲人數大爲減少且有數人因戰事失去了家庭與家人隔絕年初在校者五十八人內女生十三人男生十五人盲工人十四人印書部二人瞽目院十人盲教員四人至於本年離校及來校情形如下來校新男生三人瞽目院一人回校之男生七人女生四人回校盲教員二人另有一畢業生因避難來校總計十八人離校者瞽目院一人赴青島盲校就職者一人盲工人一人印書部一人死者瞽目院二人女生一人共計七人兩較計增加十一人現在校者計女生十六人男生廿三人瞽目院八人盲工十三人印書部一人盲教員五人回校三人總計六十九人

教育 學生課業雖年半來並未中斷然亦無新的成功而體育與音樂均已停止至十一月份起始正式恢復了一切課程

印書部 此部最重要之兩架製版機及印書機幸尚保存惟因久未使用均已生銹至原有製成之書藉鉛版非被毀壞及被用以釘於窗上以代破碎之玻璃所有印成之書及紙張亦均多撕毀不全矣承美國依弗耳城盲人印書公司主任巴耳先生捐贈美金一百元以爲整理之費至感盛意現擬將一部製版機移至白利南路先行恢復本部所出之月刊與週刊及已經着手而爲各處教會盲人日日等待之普天頌讚之譜詞得以早日完成也

工藝部 所有製成價值約二千餘元之籐製棹椅箱籃等家具均被搶去即遺留若干件亦均毀損無完好者幸原料籐竹木尚有存者現已移至白利南路暫行恢復工作此輩工人已年餘未有工作現即使每日能有一小時之工作亦爲渠等所歡迎也

本部此次所遭犧牲之重大非短期間所能復原不但房屋與成品損失即顧主亦因以生重大影響也

啞生部 滬戰發生適在暑假內學生全部歸去至九月間由汪鏡淵副校長十分努力籌劃於哈同路賃屋上課有學生十餘人後因新舊生要求入學者日衆校舍不能容乃於今歲遷至戈登路有學生四十人該校勉力自給惟課至過於窄小當以另行設法爲宜惟使啞校不至工作中斷汪先生年來堅苦奮鬥之精神殊堪贊許也
聖誕節 承美國第四艦隊仍循舊例於十二月二十三日作第九次宴請盲生之舉計有六十六盲人入席由瞽目

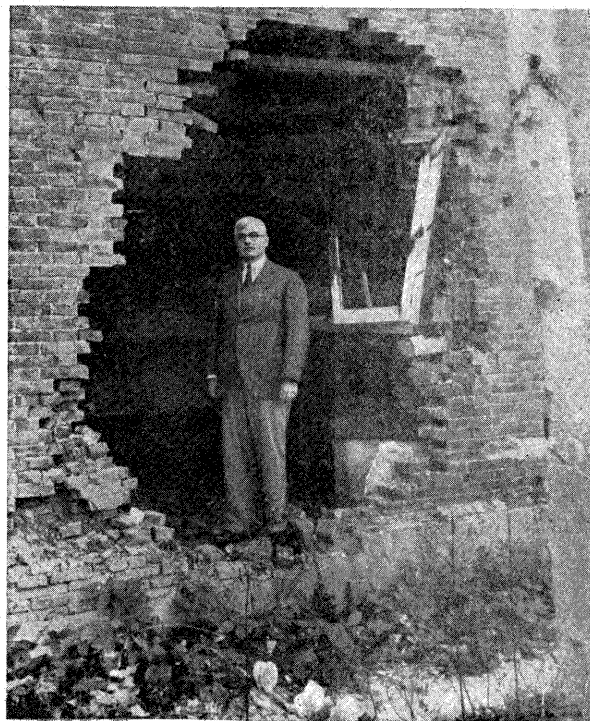
院董事長羅培德主教爲之祝福扶輪會捐款一百元並贈冰棒及兒童玩具美國禮拜堂之聖誕慶祝委員會捐二十五元並牛奶及糖果而學生於聖誕日下午仍有一個慶祝會之組織雖無往年之熱烈精彩然亦可稱許也

誌謝 在本校籌謀恢復之工作中承多數同情盲人事業之人士不惜犧牲於多方面加以贊助始能達到本校預期之目的對諸君之熱情實深感謝尤其是美國紐約及各地人士此次慷慨捐助使本校能完成修理校舍之工作及維持本校延續之經濟而海倫克拉博士慨許出名具函與愛迪克魯壽劃一切及其他贊助指導之諸君此爲本校所永誌不忘者現本校雖如處幽暗山谷但深信諸君必能給與不斷的熱烈同情使本校進入光明的平坦大道而美國友人仍繼續的惠贈書報使盲人得能於特殊的環境中平安渡過美國第四艦隊在聖誕宴請本校盲人時承商團總會王君借給一切用品美國禮拜堂各組委員會不但在聖誕即平時亦承關注也承內地會主幹及諸同仁在危急之時慨允將一座房屋借爲本校男女生避難之所且經過半年之久而畢女士與米師母包牧師夫婦諸君個人對於盲人之熱情使得盲人受得很深的感動而同仁第二醫院院長麥克那根允借一部房屋及各位醫師爲本校學生治療各種病痛又英國婦女會所贈藥物均爲本校感謝不盡者其他各界所贈之書籍紙張用品食物等不及一一縷述併以誌謝

現已進入新的年度我們確信本校一切之願望不但中國人士必能充分的給與贊助即世界各國人士亦必與以同情也



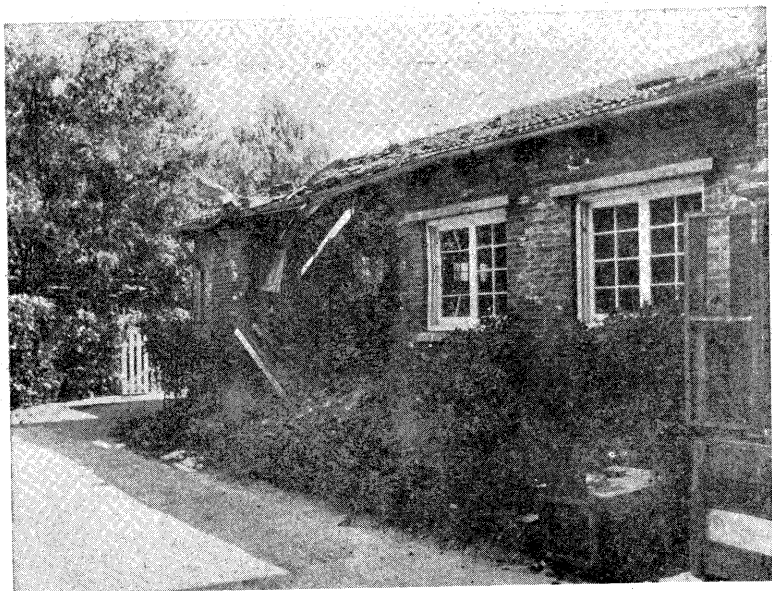
After the Bombardment
劫後旗桿



A Direct Hit
小學宿舍之殘餘



Front Gate
規餘之校門



New Show Room Nov. 1939
一九三九年十一月之工藝新陳列室

Report of Superintendent 1936

The year that has just come to a close has seen the completion of twenty-five years of service of your Superintendent. It was in June 1911 that I undertook to build up this Institution along the lines suggested by my father. As I knew very little about the education or care of the Blind I spent six months in the California school for the Deaf and Blind under Mr. Keith and Dr. French, five months in the Overbrook School under Dr. Burritt and three weeks at Perkin's Institution in Boston under Dr. Allen. It was through this exceptional opportunity of my daily contact with these veterans of the work and their capable associates that I was able to obtain an intimate knowledge of the best systems and methods used and the invaluable ideas gained through years of devoted service, that I was able to lay the foundation upon which this Institution has been built. Its success has been largely due to this year of preparation.

The Institution itself was not however opened until November 1912 so that next year 1937 will be our twenty-fifth jubilee. We hope to make it a special occasion and one that will long be remembered.

In presenting my report for the year I should like to call your attention to the success that has been manifest in every department, especially in the Blindart Workshop. We have been distinctly encouraged by the wider interest and deeper sympathy one and all have shown by the addition of many new friends whose kind interest has been a valuable source of inspiration.

STAFF.—We have been forced to make a readjustment in the Staff in the Boarding Department and have had to reluctantly disperse with one of our house-fathers, Mr. Louis Wang. We have engaged a new gymnasium teacher, Miss Cheng and a new teacher Mr. K. F. Soong. Our need is still urgent for a seeing teacher for the Lower Primary as it is impossible to carry on in an efficient manner with our present staff of blind graduate teachers.

BLIND POPULATION.—During the year we have admitted eight blind boys and three blind girls, also three new apprentices in the Industrial Department. Seven blind boys and one blind girl have left also seven in the Industrial Department, making a nett loss of one in our population. I mentioned in our last report that we could absorb at least twenty-five more in the School Department with very little additional expense. Let us endeavour to go over the hundred mark during our Jubilee in 1937.

Number on January 1936				91
Admitted				
New pupils, boys	8			
New pupils, girls	3			
Industrial Dept.	3	14		
	—			
Left				
Boys	7			
Girls	1			
Industrial Dept.	7	15	1	
	—	—	—	
				90
				—
Present population				
Boys	36			
Girls	26			
Industrial	18			
Teachers and helpers	10			90
	—			—

BUILDING AND GROUNDS.—The Institution for the Deaf still occupy some of our buildings and our attendant problems are increasing. I am hoping to be able to make other arrangements for the Deaf School after June 1937, so that we may once more have the full use of our own buildings.

The windows and doors in several buildings have been repainted, walls white-washed and roofs repaired, gutters and drain-pipes repainted. Several floors have been entirely renewed and raised and more ventilators cut. A survey was made by Mr. Poy Lee, the Architect as to the cause of the deterioration of the floor and in his report he lays the cause to dry rot through insufficient ventilation and dampness of soil. A system of drainage will be very expensive so he suggests we keep them repaired as best we can.

The western cement walk has been widened by a strip of cinder path and drains placed in the southern end. A new sign has been placed at the front gate and old signs repainted. The S. M. C. Police have erected two School Zone signs so that dangers from motor-cars has been considerably lessened. The three new buildings are still urgently required, especially the sales-room for the workshop products.

MEDICAL.—We have had rather a serious outbreak of Malaria and Influenza besides a large number of difficult Chilblain cases. As we have no regular clinic or nursing staff this has been a distinct hardship on our matrons and others. One boy suddenly

developed T. B. and had to be removed to the hospital and one small boy died of heart failure. Dr. Nance started an examination of our pupils but this had to be discontinued on his departure for America. If this could be completed it would prevent a re-occurrence of such a tragedy and a good deal of unnecessary suffering. The Health Department of the S. M. C. has very generously vaccinated 124 against Small-Pox, the majority of which have taken very well.

BOARDING DEPARTMENT.—All of our pupils are boarders and they are given as much care out of the class-rooms as in it. Each cottage has a house-father or mother and a great deal is done to keep the pupils busy and train them for a life of usefulness.

EDUCATION.—Our school courses extend from the Kindergarten through the Junior Middle School and the standard is equal to that of the best government or municipal primary schools. We have now sixty-two pupils in all, first year, nine, second year, six, fourth, eleven, fifth, nine, fifth B. 10, Second year Junior Middle School five, and special pupils twelve. Last year seven graduated from the sixth year and Madam Wu Teh-Chen, wife of the Mayor of Greater Shanghai, very graciously presented the diplomas at our Spring Entertainment. Six of these graduates have been transferred to the Workshop and one has returned home to take up other work. Several of our ex-pupils have taken up fortune-telling. They find a few years education is very advantageous and they are able to advance with greater rapidity and understanding than those who have not been so fortunate.

MUSICAL.—Our pupils are all given a thorough musical education in addition to that obtained in the ordinary class-rooms. The blind only have two aesthetic doors open to them, music and literature. During the year fifty-nine have received instruction in singing, twenty-nine on the organ, and four on the piano. Besides this there are twelve in the Brass Band and six learners, also ten in the Drum and Fife Band. We have now fourteen organs, two pianos, two radios, one victrola, twenty-one band instruments and a musical library of fifty-five volumes. Our chorus work has improved greatly and is much in demand. They have increased their number of songs. Our star pianist Wu Shao Yung passed his Senior Trinity Examination with honours to the intense satisfaction of his teacher Mr. Gerald Sidney, and all of us. We have the pleasure of expressing our grateful thanks to Mrs. Dumbarton for the gift of a small folding organ, to Miss Olive of McTyiere for the loan of music and the Misses Jansen for advice in regard to suitable pieces for our chorus work.

LIBRARY.—The Library is a safe retreat for those who wish to read or study quietly. More pupils seem to be developing a reading habit which is very satisfactory. Nearly one thousand books have been borrowed by sixty readers in the school besides twenty-two readers in Shanghai, Soochow, Nanking, Tsingtao, Hankow, Foochow, Yunnan, Hongkong and Kansu.

We have had several additions to the number of books during the year, so we now have one hundred and seventy-five in American Braille, 274 vols; 104 in English Braille, 316 volumes; Chinese Braille, 557 volumes, and 55 in music, 96 volumes.

We greatly appreciate the following gifts to the Library. 116 magazines from Miss Burnham, Perkin's Institution, Boston, Matilda Ziegler Magazine, Illuminator, Messenger to the Sightless, Reader's Digest 2 copies, Christian Science Magazine, the Outlook for the Blind and Teacher's Forum from the American Foundation for the Blind, The Torch from England and various other magazines. We have received gifts of books from Mr. Michael Aylum 14 books, Mr. Fu Musical Notation and Braille Union 3 books. We have also been loaned books from the New York Public Library, the National Library, London, and the Braille Circulating Library Richmond, Virginia.

RELIGIOUS WORK.—Great interest has been manifested in our religious work. We have carried on our daily morning and Sunday services, Christian Endeavour and Wednesday evening prayer meetings. The girls' School have daily evening prayers in their own cottage. We are hoping this next year to have a series of talks by interested friends from Shanghai.

PUBLICITY.—The education of the public is still one of our chief concerns. We aim to have as many as possible "Blind minded." During the year we gave twenty-one demonstrations away from the school before over ten thousand interested spectators. Our Tag Day, Spring Entertainment, Autumn Demonstration and Christmas Sale have been wonderful means of publicity, besides our usual Stalls in the B. W. A. advertising exhibition and the M. C. L. Bazaar. These exhibitions for publicity's sake are a difficult undertaking for our depleted and overworked staff as well as for our pupils, and seriously interferes with our regular routine. The work of preparation for these demonstrations and entertainments is enormous and great credit is due to those who have uncomplainingly born the brunt of extra work.

We have distributed our usual number of leaflets and pamphlets as well as our two thousand copies of our 1935 Report which was

found to be most interesting and useful to the general public and those engaged in the work for the Blind all over the world.

VISITORS.—Sixty-two different groups representing 1265 people have been shown the work at the Institution besides 1158 individual visitors. This does not include the two thousand who came out to our Autumn Demonstration. The groups and individual visitors have come from all over China and many parts of the world.

Mr. and Mrs. Rufus S. Mather of the Light House, New York visited the Institution during June. They were much interested in all phases of the work, were entertained in Shanghai by the American Consulate-General, and gave a talk at the Chinese Y. M. C. A. in regard to their work in America.

ENTERTAINMENTS.—The Spring Entertainment and Reception was held at the International Recreation Club in May. It was a great success and was attended by at least five hundred interested friends of all races and religions. A short programme was given by the pupils of the Deaf School as well as by our own and diplomas were graciously presented to the graduates of both schools by Madam Wu Teh-Chen.

The Autumn Demonstration was held at the Institution grounds during November. About five hundred attended on Saturday afternoon and fifteen hundred on Sunday afternoon. A continuous demonstration was given by the pupils on the lawn and a short programme of gymnasium work and singing at 4 p.m., after which tea was served by the members of the Ladies' Committee. The Institution Brass Band played during the tea hour and there was an exhibition of work by both schools in the various buildings throughout the afternoon.

CHRISTMAS SALE OF WORK.—A Christmas sale of the products of the Blindart Workshop was held on December 12—16. Through the courtesy of Mrs. Liza Hardoon the Sale was held at No. 190 Nanking Road. It attracted a great deal of attention and over a thousand dollars' worth of work made by the pupils was sold. We are very grateful to all of those who assisted us and made the sale possible.

SCHOOL FOR THE DEAF.—The School for the Deaf has continued to occupy our buildings notwithstanding the crowded condition and inconveniences for work. All visitors are much interested in what the Deaf can do. There are in all sixty-four pupils, both boys and girls, from many parts of China and as far south as Singapore and Penang. The work is the same as is done in other

schools but our lack of trained teachers, suitable apparatus and space for industrial work are some of the inconveniences we have to put up with. It is hoped that separate quarters will soon be found for them as both schools suffer on account of the crowded condition and lack of room for expansion.

CHRISTMAS ACTIVITIES.—The spirit of Christmas was most evident this year. The chief event was the sumptuous dinner given to the deaf and blind pupils by the U. S. Fourth Marines. Col. Price himself attended and the Band played many well known selections during the meal. The Rotary Club sent toys and sweets as usual and the American Community Church and School toys and clothing. McTyiere School several bundles of clothing and St. Mary's Hall a donation for a feast.

LECTURE COURSE AT GREAT CHINA UNIVERSITY.—This course which I have given for two years on the education and care of the Deaf and Blind was discontinued at the end of June. It was difficult to prepare but was very useful from a publicity standpoint. I have been asked to prepare my notes for publication in book form which could be used as a text-book for future occasions.

DIRECTORY OF WORK FOR THE BLIND AND DEAF.—This survey has been completed and 300 copies printed in pamphlet form. These have been sent where they will do the most good but further copies are available for those who wish them. The cost of printing was made possible through a friend in San Francisco. As this is the first attempt at compiling a directory it naturally needs revising in view of additional information received after printing.

BLINDART WORKSHOP.—This year has been a most successful one as we have made a profit of nearly two thousand dollars, water, light and overhead expenses not taken into consideration. The assets are now valued at \$6194.00. During the year we have had nine regular workers who earned \$1005.00 and nine apprentices who will be put on the regular staff as soon as they can reach the required standard. Over \$10,000.00 has been received through sales, and the future prospects of this Blindart Workshop are very encouraging. When more trades are available and more blind workers in training we shall have the nucleus of a thoroughly up-to-date workshop. We are hoping to be able to engage the services of a competent full time manager and that we shall also be able to build our urgently needed Salesroom for which we have been waiting so long.

PRINTING PRESS.—The Sunday Chat weekly 10 pages, and the Beacon monthly 12 pages have been published throughout

the year. These magazines have been sent free to all the blind in China who can read them and are much appreciated by the thousand or more readers.

During the year we have printed 889 volumes and sold 619 volumes, realizing \$172.10.

NEW BOOKS STEREOTYPED.

Stories of Confucius	Chinese Braille	37 pages
What God Wants me to do ...	do	9 "
Life of Dr. Mary Niles	do	21 "
Hitting the Dark Trail	do	124 "

MUSICAL BRAILLE.

Organ Manual for Beginners		30 "
Songs, words and music		44 "

We have stereotyped 319 large zinc plates, 598 small zinc plates, using 30,471 sheets of large paper and 79,139 sheets of small paper. Besides this we have reprinted Pastor Hsi for the Braille Literature Association 9,800 pages. We have also completed 60 hymns on the new hymnal and started stories from history in Chinese Braille.

ACKNOWLEDGMENTS.—There are so many friends that we have to thank for their kind assistance and help during the past year that it will be impossible to enumerate them all. We certainly feel very grateful to all for their generosity and deep sympathy without which we should not have been able to carry on. Besides those who have helped us so greatly and mentioned in the main body of the report we have to thank the great number of both Chinese and foreigners who gave so generously various contributions towards our work throughout the year. The large number of ladies and the boy scouts of the Sixth Shanghai Group who so kindly donated their services during our Christmas Sale, Tag Day and exhibitions. Mrs. Liza Hardoon for the loan of No. 190 Nanking Road for our Christmas Sale, the Shanghai Power Co. for installing electrical lights, for the loan of same and a donation for the cost of electric current consumed, the Far Eastern Sanitary Co. for cleaning the premises completely free of charge and to the S. M. C. Police for their kind assistance at the doors.

Many have given us donations of clothing, food, magazines for writing Braille, and other useful and necessary assistance. There is a bright future for the work of the Blind and Deaf in China but without the kind assistance and deep sympathy of the public and friends we could not begin to accomplish what we are trying to do.

GEO. B. FRYER.
Superintendent.

INSTITUTION FOR THE CHINESE BLIND
(Accounts of the Board of Trustees)
SHANGHAI

REPORT
ON EXAMINATION OF ACCOUNTS
FOR THE TWO YEARS ENDED
DECEMBER 31, 1936

Accountants' Certificate

Institution for the Chinese Blind:

We have made an examination of the statement of assets and liabilities as governed by the Board of Trustees of the Institution for the Chinese Blind, Shanghai, as of December 31, 1936 and 1935, and of the related statement of income and expenses for the years ended those dates. In connection therewith, we made a review of the accounting methods and examined or tested accounting records of the Trustees and other supporting evidence in a manner and to the extent which we considered appropriate.

We did not examine the fixed asset accounts prior to January 1, 1934, nor did we ascertain the adequacy of the reserves for depreciation of these assets.

Except for the annual depreciation provisions, the Trustees' accounts are maintained on a cash basis, hence no accruals have been taken up on the books nor in the accompanying statements for interest on investments.

In our opinion, based upon such examination and subject to comments in the two preceding paragraphs, the accompanying statement of assets and liabilities as governed by the Board of Trustees and the related statement of income and expenses fairly present such assets and liabilities (exclusive of the assets and liabilities of the Institution's Administrative and Industrial departments) as of December 31, 1936, and the results of the Trustees' operations for the years ended those dates.

HASKINS & SELLS.

Shanghai,
March 29, 1937.

INSTITUTION FOR THE CHINESE BLIND
(Accounts of the Board of Trustees)
SHANGHAI

STATEMENT OF ASSETS AND LIABILITIES AS OF
DECEMBER 31, 1936 AND 1935, AND COMPARISON
(Stated in Chinese National Currency Dollars)

	ASSETS		
	December 31 1936	1935	Increase Decrease
FIXED ASSETS—AT COST:			
Land	\$ 75,273.26	\$ 75,273.26	
Buildings	143,419.65	143,419.65	
Equipment	3,118.94	3,118.94	
Furniture and fixtures ..	2,774.74	2,774.74	
Total	<u>\$224,586.59</u>	<u>\$224,586.59</u>	
Less reserves for depreciation:			
Buildings	\$ 11,473.56	\$ 8,605.17	\$ 2,868.39
Equipment	623.80	467.85	155.95
Furniture and fixtures	554.96	416.22	138.74
Total	<u>\$ 12,652.32</u>	<u>\$ 9,489.24</u>	<u>\$ 3,163.08</u>
Fixed assets—Net	<u>\$211,934.27</u>	<u>\$215,097.35</u>	<u>\$ 3,163.08</u>
INVESTMENTS—AT COST (valuation based on market quotations as of December 31, 1936—\$163,308.32) ..	<u>\$138,829.63</u>	<u>\$132,417.13</u>	<u>\$ 6,412.50</u>
CURRENT ASSETS:			
Cash on deposit	\$ 210.18	\$ 2,345.05	\$ 2,134.87
Accrued interest on secur- ities purchased	64.64	254.21	189.57
Total current assets	<u>\$ 274.82</u>	<u>\$ 2,599.26</u>	<u>\$ 2,324.44</u>
DEFICIT—RECOVERABLE FROM THE INSTITU- TION'S ADMINISTRA- TIVE DEPARTMENT:			
Balance carried forward from previous years	\$ 15,683.90	\$ 15,420.02	\$ 263.88
Less excess of income over expenses for the year, per accompanying statement of income and expenses	924.98	263.88	1,188.86
Deficit—Net	<u>\$ 14,758.92</u>	<u>\$ 15,683.90</u>	<u>\$ 924.98</u>
TOTAL	<u>\$365,797.64</u>	<u>\$365,797.64</u>	

LIABILITIES

	December 31		
	1936	1935	Increase Decrease
ENDOWMENTS AND BEQUESTS:			
Permanent endowment fund	\$ 69,930.07	\$ 69,930.07	
Building and equipment fund	13,986.01	13,986.01	
Dr. Fryer's donation for purchase of land ...	11,816.78	11,816.78	
Dr. Fryer's bequest to the girls' institute ..	77,451.42	77,451.42	
Lester bequest	69,930.07	69,930.07	
	<u>243,114.35</u>	<u>243,114.35</u>	
Total endowments and bequests ..	<u>\$243,114.35</u>	<u>\$243,114.35</u>	
CAPITAL SURPLUS:			
Profit on sale of Edinburgh Road property	\$119,483.76	\$119,483.76	
Bonus shares and profit on realization of in- vestments—Net	3,199.53	3,199.53	
	<u>122,683.29</u>	<u>122,683.29</u>	
Total capital surplus	<u>\$122,683.29</u>	<u>\$122,683.29</u>	
TOTAL	<u>\$365,797.64</u>	<u>\$365,797.64</u>	

Note: The above statement does not include the accounts of the Institution's Administrative and Industrial departments.

INSTITUTION FOR THE CHINESE BLIND
(Accounts of the Board of Trustees)
SHANGHAI

STATEMENT OF CASH RECEIPTS AND DISBURSEMENTS
FOR THE YEARS ENDED DECEMBER 31, 1936
AND 1935, AND COMPARISON
(Stated in Chinese National Currency Dollars)

	Year Ended December 31, 1936	1935	Increase Decrease
CASH ON DEPOSIT AT THE BEGINNING OF THE YEAR (overdraft in red)	\$ 2,345.05	\$ 173.39	\$ 2,518.44
ADD RECEIPTS FOR THE YEAR:			
Interest and dividends on investments:			
Institution's investments,	\$ 6,885.41	\$ 6,148.30	\$ 707.11
Girls' institute investments	2,146.28	1,400.38	745.90
Dr. Fryer's bequest to girls' institute—U.S.\$3,000.00		10,050.25	10,050.05
Interest on bank deposit ..	13.64		13.64
Sundry		27.97	27.97
Total receipts	\$ 9,015.33	\$ 17,626.90	\$ 8,611.57
Total	\$ 11,360.38	\$ 17,453.51	\$ 6,093.13
LESS DISBURSEMENTS FOR THE YEAR:			
Annual grant to Institution	\$ 4,200.00	\$ 4,300.00	\$ 100.00
Securities purchased during the year:			
Cost	6,412.50	9,720.00	3,307.50
Accrued interest	115.46	254.21	138.75
Prokerage and transfer fees	35.52	48.60	13.08
Legal and consular charges	106.00	6.78	99.22
Insurance premiums	240.72	240.72	
Final payment to buildings contractor		489.50	489.50
Interest paid on bank overdraft		8.65	8.65
Land management fee	40.00	40.00	
Total disbursements	\$ 11,150.20	\$ 15,108.46	\$ 3,958.26
REMAINDER—REPRESENTED BY CASH ON DEPOSIT AT THE END OF THE YEAR	\$ 210.18	\$ 2,345.05	\$ 2,134.87

Note: The above statement does not include the accounts of the Institution's Administrative and Industrial departments.

INSTITUTION FOR THE CHINESE BLIND

(Accounts of the Board of Trustees)

SHANGHAI

STATEMENT OF INCOME AND EXPENSES FOR THE YEARS
ENDED DECEMBER 31, 1936 AND 1935, AND COMPARISON
(Stated in Chinese National Currency Dollars)

	Year Ended December 31, 1936	1935	Increase Decrease
INCOME:			
Interest and dividends on investments:			
Institution's investments	\$ 6,855.41	\$ 6,148.30	\$ 707.11
Girls' institute investments	1,841.25	1,367.68	473.57
Total interest and dividends on investments ..	\$ 8,696.66	\$ 7,515.98	\$ 1,180.68
Interest on bank deposit ..	13.64	8.65	22.29
Miscellaneous		27.97	27.97
Total	\$ 8,710.30	\$ 7,535.30	\$ 1,175.00
EXPENSES:			
Annual grant to the Institution	\$ 4,200.00	\$ 4,300.00	\$ 100.00
Fire insurance	240.72	240.72	
Land management fee	40.00	40.00	
Brokerage etc.	35.52	48.60	13.08
Legal expense, consular charges, etc.	106.00	6.78	99.22
Depreciation:			
Buildings (2% per annum)	2,868.39	2,868.39	
Equipment (5% per annum)	155.95	155.95	
Furniture and fixtures (5% per annum)	138.74	138.74	
Total	\$ 7,785.32	\$ 7,799.18	\$ 13.86
EXCESS OF INCOME OVER EXPENSES	\$ 924.98	\$ 263.88	\$ 1,188.86

Note: The above statement does not include the accounts of the Institution's Administrative and Industrial departments.

INSTITUTION FOR THE CHINESE BLIND
(Administrative, Boarding, Educational,
Publicity and Printing Departments)
SHANGHAI

REPORT
ON EXAMINATION OF ACCOUNTS
FOR THE YEAR ENDED
DECEMBER 31, 1936

Accountants' Certificate

Institution for the Chinese Blind:

We have made an examination of the statement of assets, liabilities, and deficit of your Administrative, Boarding, Educational, Publicity and Printing departments as of December 31, 1936, and of the related summary of income and expenses of these departments for the year ended that date. In connection therewith we made a review of the accounting methods and examined or tested the accounting records of the departments and other supporting evidence in a manner and to the extent which we considered appropriate.

In accordance with the scope of our engagement we did not refer the accounts receivable to the debtors for confirmation.

In our opinion, based upon such examination and subject to the comment in the preceding paragraph, the accompanying statement of assets, liabilities, and deficit of the Institution's Administrative, Boarding, Educational, Publicity and Printing departments and the related summary of income and expenses fairly present the financial condition of such departments as of December 31, 1936, and the results of operations for the year ended that date.

HASKINS & SELLS.

Shanghai,

March 29, 1937.

INSTITUTION FOR THE CHINESE BLIND
(Administrative, Boarding, Educational,
Publicity and Printing Departments)
SHANGHAI

STATEMENT OF ASSETS, LIABILITIES, AND DEFICIT
AS OF DECEMBER 31, 1936
(Stated in Chinese National Currency Dollars)

ASSETS

CASH ON DEPOSIT AT THE HONGKONG & SHANGHAI BANKING CORPORATION:		
Institution's account	\$ 1,898.71	
Honorary Treasurer's account	100.00	\$ 1,998.71
DUE FROM COMPRADORE		194.50
ACCOUNTS RECEIVABLE		1,814.77
Total assets		\$ 4,007.98

EXCESS OF LIABILITIES OVER ASSETS
(deficit):

Balance carried forward from previous years	\$25,418.75	
Less excess of income over expenses for the year ended December 31, 1936, as shown in the accompanying statement of income and expenses	3,050.20	22,368.55
TOTAL		\$26,376.53

LIABILITIES

ACCOUNTS PAYABLE		\$ 2,193.60
LOANS PAYABLE:		
Trustees of the Institution	\$14,758.92	
Industrial department of the Institution	1,067.00	
G. B. Fryer	8,357.01	24,182.93
TOTAL		<u>\$26,376.53</u>

Note: The above statement does not include the accounts of the Institution's Industrial department nor the accounts of the Trustees of the Institution.

INSTITUTION FOR THE CHINESE BLIND

(Administrative, Boarding, Educational,

SHANGHAI

Publicity and Printing Departments)

SUMMARY OF INCOME AND EXPENSES FOR THE YEAR

ENDED DECEMBER 31, 1936

(Stated in Chinese National Currency Dollars)

INCOME:

Donations	\$18,801.09
Grant from the Board of Trustees	4,200.00
Pupils' fees (for boarding)	2,882.37
House rent	1,920.00
Printing department income—Subscriptions, dona- tions, and sale of braille books	445.87
Transfer of net income of the Trustees for the year,	924.98
Sundry	15.00
	<hr/>
Total	\$29,189.31
EXPENSES—PER ACCOMPANYING SCHEDULE ..	26,139.11
	<hr/>
EXCESS OF INCOME OVER EXPENSES	<u>\$ 3,050.20</u>

Note: The above statement does not include the accounts of the Institution's Industrial department nor the accounts of the Trustees of the Institution.

INSTITUTION FOR THE CHINESE BLIND
(Administrative, Boarding, Educational,
Publicity and Printing Departments)
SHANGHAI

STATEMENT OF EXPENSES, BY DEPARTMENTS,
FOR THE YEAR ENDED DECEMBER 31, 1936

(Stated in Chinese National Currency Dollars)

	DEPARTMENTS					
	Total	Administrative	Boarding	Educational	Publicity	Printing
Salaries:						
Superintendent	\$ 4,200.00	\$ 4,200.00				
Sighted	3,716.43	1,177.00	\$ 1,367.60	\$ 1,003.33		\$ 168.50
Blind	2,696.00			2,310.00		386.00
Wages	1,822.25	838.00	822.25	162.00		
Board—Net	5,852.78	502.50	4,432.78	676.00		241.50
Repairs	1,131.64	1,080.64				51.00
Entertaining and traveling	1,364.61	638.77			\$ 725.84	
Printing matter, exhibitions, etc.	776.80				776.80	
Light, taxes, and water	884.95		395.84		489.11	
Telephone	222.72	222.72				
Stationery and postage	308.94	242.03			66.91	
Sundry supplies	1,140.71			439.98		552.61
Clothing, pupils' expenses, etc.	353.54		353.54			
Medical fees	203.28	56.50	149.78			
Interest—Net	567.52	567.52				
Refund to the Trustees of memorial funds received prior to 1932	559.79	559.79		8.05	39.34	102.98
Miscellaneous expenses	334.15	158.78	25.00	8.05	39.34	102.98
Total	\$26,139.11	\$10,244.25	\$ 7,694.91	\$ 4,599.36	\$ 2,098.00	\$ 1,502.59

Note: The above statement not include the accounts of the Institution's Industrial department nor the accounts of the Trustees of the Institution.

INSTITUTION FOR THE CHINESE BLIND
(Industrial Department)
SHANGHAI

REPORT
ON EXAMINATION OF ACCOUNTS
FOR THE YEAR ENDED
DECEMBER 31, 1936

Accountants' Certificate

Institution for the Chinese Blind:

We have made an examination of the statement of net assets and surplus of your Industrial department as of December 31, 1936, and of the related statement of income and expenses for the year ended that date. In connection therewith, we made a review of the accounting methods and examined or tested the accounting records of the department and other supporting evidence in a manner and to the extent which we considered appropriate.

In accordance with the scope of our engagement, we did not refer the accounts receivable to the debtors for confirmation.

In our opinion, based upon such examination and subject to the comment in the preceding paragraph, the accompanying statement of net assets and surplus of the Institution's Industrial department and the related statement of income and expenses fairly present, respectively, the financial condition of such department as of December 31, 1936, and the results of operations for the year ended that date.

HASKINS & SELLS.

Shanghai,

March 29, 1937.

INSTITUTION FOR THE CHINESE BLIND
(Industrial Department)
SHANGHAI

STATEMENT OF NET ASSETS AND SURPLUS
AS OF DECEMBER 31, 1936
(Stated in Chinese National Currency Dollars)

ASSETS:

Cash on deposit at the Hongkong & Shanghai Bank- ing Corporation	\$1,472.58	
Due from compradore	125.01	
Accounts receivable:		
Due from the Institution's administra- tive department	\$1,067.00	
Customers	640.20	1,707.20
Stocks on hand:		
Finished stock—Rattan furniture	\$1,336.70	
Materials and supplies	1,552.66	2,889.36
Total	\$6,194.15	
Less accounts payable	164.50	

REMAINDER—NET ASSETS

	\$6,029.65
--	------------

REPRESENTED BY:

Surplus carried forward from previous years	\$4,082.17	
Add excess of income over expenses for the year ended December 31, 1936, as shown in the accompanying statement of in- come and expenses	1,947.48	\$6,029.65

Note: The above statement does not include the accounts of the Administrative, Boarding, Educational, Publicity, and Printing departments nor the accounts of the Trustees of the Institution.

INSTITUTION FOR THE CHINESE BLIND
(Industrial Department)
SHANGHAI

STATEMENT OF INCOME AND EXPENSES FOR THE YEAR
 ENDED DECEMBER 31, 1936
 (Stated in Chinese National Currency Dollars)

INCOME:

Sales—Rattan furniture, bamboo, etc.	\$10,797.14	
Interest on bank balances	9.61	
Sundry	26.70	
Total		\$10,833.45

EXPENSES:

Cost of sales:

Inventories, January 1, 1936	\$2,130.14	
Add purchases for the year ..	5,299.98	
Total	\$7,430.12	
Less inventories, December 31, 1936	2,889.36	\$ 4,540.76

Overhead, etc.:

Salaries and wages	\$3,315.46	
Boarding expenses	,540.20	
Accounts receivable written off	11.50	
General expenses	478.05	4,345.21

Total

8,885.97

EXCESS ON INCOME OVER EXPENSES \$ 1,947.48

Note: The above statement does not include the accounts of the Administrative, Boarding, Educational, Publicity, and Printing departments nor the accounts of the Trustees of the Institution.

List of Donations for the Year 1936

Anonymous	\$ 1,064.50	Brondal, Mr. A.	10.00
Ashley, Miss Madge (scholarship)	65.00	Boone Road Primary School, The 達路小學	8.09
I Guen Primary School, The	18.30	British Forces, Y. M. C. A.,	27.48
American Express Co., Inc., The	10.00	Barker, Mr. K. C.	5.00
Allen Memorial Church	10.00	Browett, Mr. and Mrs. H.	5.00
Allman, Mr. F. N.	10.00	Chinese Blind Asylum, Scholarships	1,812.00
Abraham, Mr. D. E. J.	10.00	Chinese Women's Club, The 中國婦女會	500.00
Anderson, Mr. and Mrs. G. A.	10.00	China National Amateur Athletic Fed.	300.00
Avazeri, Mr. A.	1.30	Community Church Benevolent Sunday	240.47
Ault & Wiborg Co., The	20.00	Community Church Sunday School Special donation for milk	79.80
Besant School for Girls 培成女學	190.32	Community Church Sunday School Junior Dept.	60.00
Earrie, Dr. H. G.	55.00	Community Church S. S. 6 grade boys	15.00
Blaker, Mr. B. O.	25.00	Chia Ming Primary School 覺民小學	206.90
Borden Co., The	25.00	Committee of Management of the Children' year Association Per Mr. C. P. Tsiang	100.00
B. W. A. Children's Party	23.40	上海市兒童年實施委員會	100.00
Bridgeman Memorial School, The 裨文女學	20.00	Cunningham Road Primary School 克能海路小學	79.85
Banque Belge Pour L'Entranger, The	20.00	Chun, Mr. Y. C.	76.00
Beauce, Rev. E.	20.00	Chen Hwa Paints Mfg. Co. The	76.00
Bailey, Mr. R.	20.00	China Soap Co Ltd.,	50.00
Barker, Prof. and Mrs. Alfred F.	20.00	Chang, Mrs. K. F.	50.00
Burdick, Miss S. M.	18.20	Chen, Mr. J. H.	38.00
Bridgeman School, The Students 裨文女中	16.00	Chen Hsin Primary School	25.39
Bubbling Well Primary School, The 靜安小學	12.50	Cheng, Mr. John T. Y.	25.00
Benevolent Industrial Institution Middle and Primary Schools 貧兒教養院	10.63	Cantonese Missionary Society 振新小學	45.00
Brennemann, Mr. J. J.	10.00	Ching, Mr. C. H.	20.30
Bryson, Rev. Arnold G.,	10.00	Chang, Mr. L. Y.	20.00
Bridges, Mrs. F. S.	10.00	Commercial Press, Ltd., 商務印書館	20.00
Black, Mr. Adam	10.00		
Balzer, Mr. A.	10.00		
Booth, Mr. and Mrs. H.	10.00		

Chu, Mr. M. S.	20.00	Ellis Kadoorie Public School for Chinese 育才中學	79.28
Chih Hsin Primary School 知行小學	17.28	Espey, Mrs. J. M.	10.00
Chang, Mr. S. N.	15.00	Ely, Mr. and Mrs. John A.	20.00
Chinai & Co., Messrs. J. C.	15.00	Edgar, Dr. J.	25.00
Chien Ngi Primary School	11.81	Eastern District Society of Shai,	.76
Chingkiang Missionary Association	10.00	Friend, a Chinese	359.00
Calder, Mr. A. Bland	10.00	Friends, two	50.00
China Travel Service Bureau 中國旅行社	10.00	Fleming, Dr. E. E.	5.00
Ching Tseng Primary School	10.00	Fourth Marine Church	70.85
Chang, Mr. K. W.	10.00	Friend, A.	50.00
Chu, Mr. 朱先生	10.00	Fistere, Mr. J.	10.00
Chang, Mr. H. T.	10.00	Fearn, Dr. Anne Walter	25.00
Chang Yuan Chi, Mr.	10.00	French, Mr. C. H.	76.00
Chen Hsi Primary School 振西小學	9.53	Fitch, Mr. George A.,	25.00
Chien Te Primary School 建德小學	8.54	Friedman, Mr. Max	10.00
Chi Mei Primary School	8.00	Funatsu, Mr. T. M.	38.00
Chow, Mr. and Mrs. J. L.	5.00	Good friends	17.00
Chiang Hai Primary School 江海小學	4.43	Grant, Mr. R. J.	10.00
China Industrial Second Primary School 中國實業第二小學	2.06	Graves, Rt. Rev. F. R.	10.00
Children of Daily Vacation Bible School 夏令兒童會	1.00	Gale, Dr. E. M.	10.00
Dodds, Miss	5.00	Ging Ngi Primary School	38.88
Dupont de Numours Co., Messrs. E. J.	10.00	Gutbezahl, Mr. M. L.	20.00
Drewett, Miss J. (Tag Day Collections)	18.00	Gray, Mr. Wm. N.	5.00
Dablestein, Mrs. Harriet	10.00	Graves, Miss Lucy J.	20.00
Deng Hwa Primary School	15.00	Geere, Mr. E. P.	40.00
Dieterle, Miss E. G. & friends	15.00	Horbaca, Mrs. J. B.	5.00
Douglass, Mr. C. W.	20.00	Huang, Mr. L. C.	100.00
Davis, Miss	10.00	Hsieh Chin School 協進中小學	168.29
Dunn, Mr. F. S.	10.00	Hai Tao Primary School 海濤小學	8.10
Damri, Mr. E. D.	50.00	Han Te Primary School 涵德小學	5.60
Donation box	109.78	Hsi Hsia Primary School 西霞小學	1.25
		Holy Trinity Cathedral Sunday School	60.00
		Hoste, Mr. D. E.	10.00
		Hopkins, Mr. P. S.	25.00
		Hoehnke, Mr. F.	25.00
		Hudec, Mr. L. E.	38.00
		Hicks, Mr. S. J.	10.00
		Hupun Primary School	19.22

Hoan Primary School 和安小學	84.74	Kelhofer, Mr. E.	15.00
Hai Shan Primary School	16.85	Kwangtung Primary School 廣東小學	32.36
Hsu, Mr. and Mrs. Jabin 許建屏先生	20.00	Kien Kou Primary School	0.60
Huang, Mr. Siu Feng 黃秀峯先生	58.00	Kao Chong Primary School	3.00
Huang, Mr.	40.00	Kwang Kung Primary School	15.00
Howard, Miss Francis P.	10.00	Kann, Mr. E.	10.00
Hunt, Mrs. Theodore A.	1.00	Lee, Mr. James H. 李先生	76.00
Hing, Mr. H. M.	10.00	Lin Jen Primary School 立人小學	6.45
Harkson, Mr. U. S.	20.00	Lee, Mr. 李先生	10.00
I Shen Primary School 頤生小學	31.36	Lawler, Miss E. B.	10.00
I Chao Primary School 儀昭小學	14.78	Loh, Mr. C. P. 樂振藻先生	20.00
International Club of Shanghai 萬國體育會	50.00	Lindner, Mr. J.	10.00
Irvine, Miss Elizabeth	10.00	Low, Dr. C. W.	10.00
Jue Kiang Primary School	10.00	Li Ming, Mr. 李銘先生	5.00
Joscelyne, Mr. R. A.	38.00	Liu, Dr. C. S.	5.00
Joseph, Mrs.	10.00	Li Ching Mai, Lord	10.00
Joseph, Mr. S. M.	15.00	Lee, Mrs. Dorothy,	20.00
Japanese W. C. T. U.	5.00	Lee, Dr. T. H. 李登輝博士	76.00
Kao Vong Dz, Mr. 高鳳池先生	15.00	Ly, Dr. J. Usang, 黎照環博士	5.00
Kutzschback, Mr. Arthur H.	25.00	Lalcaca, Mr. B. P.	10.00
Kuang Ho Primary School 光禾小學	1.00	Lee, Mr. I. Yao	25.00
Kopelman, Mrs. Helen	72.00	Lee, Mr. and Mrs. K. S. 李觀森先生及夫人	200.00
Kuang Hsih Primary School 光實小學	4.91	Lichia, Mr. D. L.	50.00
Kinchow Road Primary School 荊州路小學	14.58	Lee, Mr. Poy G. 李錦沛先生	10.00
Kuang Shao Second Primary School 廣肇小殿	4.95	Miao Feng Zei, Mr. 繆鳳瑞先生	5.00
Kuehn, Mr. Karl	5.00	Mokanshan Sunday School	10.43
Keswick, Mr. W. J.	5.60	Moore Memorial Church 慕爾堂	40.00
Kuo Yueh, Miss 顯或女士	30.00	do Young Women's Group	40.00
Kuo Ming Ming, Miss 顧金銘女士	30.00	Myers, Mr. and Mrs. C. M.	50.00
Kadaira, Mr. H.	5.00	Marv Farnham School 清心女中	200.00
King, Mr. I. H.	38.00	MacRae, Dr. and Mrs. C. F.	15.00
Koo, Mr. Dawson	10.00	Mablove, Mrs.	5.00
Kent, Mr. N. E.	10.00	Marshall, Mrs. A. B.	20.00
		Men Tan Kindergarten 夢貝幼稚園	13.63
		Mokrejs, Mr. J. J.	10.00
		Ma, Mr. P. H.	5.00
		Milward, Mr. Walter	10.00

Ming Tze Primary School	24.10	Phei Hung Primary School	10.00
Mather, Mr. and Mrs. R. G.	178.62	Parsons, Mr. E. E.	5.00
Ministering Children's League,	231.85	"P." Mr.	5.00
Maxwell, Dr. and Mrs. J. L.	10.00	Perrin, Mr. C. M.	15.00
Middleton, Mr. H. E.	3.00	Pon Ming Fan Mr.	100.00
Myers, Mr. and Mrs. D. F.	20.00	Poate, Mr. and Mrs. F. W.	20.00
Mission to the Blind in Heathen and Bible Lands, £10.0.0	165.51	Quick, Mrs.	5.00
Moshier, Mrs.	10.00	Quayle, Mr. J. A.	5.00
McTyiere School 中西女中	27.00	Reader-Harris, Mr. M.	70.00
McGregor, Mrs. Anne	40.00	Riggio, Mr. L.	10.00
Mason, Mr. and Mrs. Y. Lewis, 陸協曾先生及夫人	20.00	Rotary Club of Shanghai	100.00
Noeltings, Mr. F. A. M.	7.00	Roberts, Mr. Donald,	10.00
National Child Welfare Assn. 中華慈幼協會	90.00	Standard Vacuum Oil Co., 美孚洋行	25.00
Navv Y. M. C. A. collections	15.70	Shanghai Race Club 上海跑馬總會	1,250.00
Nieh Cheh Kwei School 聶中丞中學	27.56	Solomon, Mr. H. H.	5.00
Nash, Mr. E. T.	15.00	Schumacher, Mr. A. E.	15.00
Nan Hse Primary School	3.41	Smith, Rev. H. Maxcy,	10.00
Nazer, Mrs. Florence,	10.00	Sze Yu Fong, Mr.	6.00
Nieh, Madam Tseng 聶老太太	20.00	Shan, Madame, 單老太太	200.00
"J. N."	30.00	Shanghai Fire Insurance Association & Shanghai Insurance Assn. Joint Committee	25.00
Prevot, Mr. P. H.	5.00	Shanghai Parsee Cemetery Trust Fund	31.00
Pan, Mr. J. C.	1.00	Shanghai Parsee Cemetery Trust Fund King George V. Silver Jubilee Fund	119.00
Public School for Chinese 華童中學	96.00	Starr, Miss Nellie Vander	50.00
Polytechnic School for Chinese 格致中學	56.00	St. Mary's Hall,	10.00
Pei Yu Primary School 培育小學	1.06	Sellett, Mr. George,	10.00
Pei Chu Primary School 培初小學	4.58	Sheng Hwo Primary School	11.96
Ping Ming Primary School 平民小學	0.98	Stops & Aryton, Misses	10.00
Percival, Mr. A. J.	10.00	Shanghai Flour Stock Exchange 雜糧麵粉交易所	100.00
Panney, Mr. C. D.	10.00	Stockton, Mr. & Mrs. G. C.	28.25
Patton, Dr. C. E.	10.00	Siemens, Mr. F. W.	76.00
Pflug, Mr. W. H.	10.00	Stansfield, Mr. B. J.	10.00
Page, Mr. H. E.	5.00	Soulevich, Mr. Morris I.	5.00
Pearson, Mr. C. D.	10.00	Shanghai Waterworks Co. Ltd.,	50.00
Pieh Tuh Primary School	17.20	Spurling, Miss Edith	10.00
		Sheppard, Rev. G. W.	10.00

Shimosato, Mr. Y.,	10.00	Tyao, Dr. E. S. 刁醫師	25.00
Sassoon Banking Co., Messrs. E. D.	100.00	Tan Enn Hwa, Mr.	5.00
Siu Tuh Primary School	38.68	Tan, Mr. W. H.	50.00
Sze Jung Primary School	10.00	Tsing Sing Wei, St. Mary's Hall 聖瑪利亞女中清心會	20.00
Sze Hwa Primary School	12.00	Tong, Madame,	10.00
Shanghai Primary School 上海小學	62.08	Tod, Mr. C. T.	10.00
Shen Tao Primary School	20.00	Tobias, Mr. H.	20.00
Si Chen Primary School	103.21	Tam Yung-Poo, Mr.	10.00
Shien Yu Primary School	11.00	A Friend	15.00
Shen Wen Primary School	30.00	Torresani, Mr. U.	50.00
Shu Kie Primary School	36.56	Tseng I Primary School	3.94
Shyn Kwan Primary School	10.68	Tai Hua Primary School 太華小學	38.95
Stori, Mr. E.	38.00	Tung Shan Primary School 同善小學	9.03
St. Mary's Hall, Senior B. Pupils 聖瑪利亞女中	10.00	Tyau, Mr. M. T. Z.	10.00
Shah, Mr. and Mrs. K. F. 夏偕復先生及夫人	20.00	Tag Day Collections	2,785.71
Sale of Seals	6.00	Threlkeld, Mr. J. H. G\$25.00	83.16
Shroff, Mr. P. B.	15.00	Tucker, Mr. Ellis N.	10.00
Shanghai Ladies' Society	100.00	Tsang, Mr. J. T.	10.00
Shroff, Mr. R. F.	11.00	Tseng Siu Primary School	15.10
St. Andrew's Church, Singapore,	19.28	Tao Chung Primary School	45.26
Spence Robinson & Partners,	20.00	Tan Hua Primary School	15.61
Secondary School for Chinese Girls 工部局女子中學	151.38	Tsiang, Mr. C. P.	22.69
Suffert, Mr. P. H.	25.00	Tao, Mr. Z.	5.00
St. Elizabeth's Hospital 廣仁醫院	26.00	University of Shanghai 滬江大學	15.00
Sawyer, Mr. and Mrs. J. B.	10.00	University of Shanghai Sunday School	5.00
Soochow Guild Primary School 蘇州旅滬公學	8.45	Viloudaki, Mr. N. A.	10.00
A Sympathizers Collection Box	24.78	Vella, Mr. J. F.	10.00
Smith, Miss A. Viola	10.00	Votaw, Mr. Maurice E.	10.00
Sinza Road Primary School 新開路小學	130.11	Van Tsoh Primary School 萬竹小學	120.00
St. Peter's Church 聖彼得堂	50.00	"H. de V."	20.00
Tang Wen Primary School	18.23	Wong, Mr. Sivi C.	10.00
Tseng Ru Primary School	4.00	Wilbur, Mr. H. A.	30.00
Tsu, Dr. Y. Y. 朱友瀛博士	10.00	Wilkinson, Mr. E. S.	76.00
Thomson, Miss A. P.	30.00	Ward, Mr. F. S.	20.00
		Ward, Mr. W. J.	10.00
		Wells, Mr. Ralph C.	7.50
		Wen Wei Primary School 文蔚小學	4.08

Wayside Road Primary School for Girls 工部局東區小學	41.62	Yangtszepoo Cotton Mill in memory of Mr. J. Harrop	204.00
Wagner, Mrs. E.	4.00	Young China Academy & Primary School 青華中小學	4.10
Wu Shang Primary School 務商小學	4.84	Yao, Mr. T. S.	20.00
Ward Road Primary School 華德路小學	4.10	Yee Tsoong Tobacco Distributors Ltd.,	150.00
Wolston, Mr. J. B.	20.00	Yang Tseng Primary School	11.00
Wong Lee Sing, Miss 王麗絢女士	30.00	Yin Shie Primary School	3.00
Wong I Ting, Mr. 王一亭先生	100.00	Yen, Dr. H. L. 顏逢良醫師	30.00
Wolfe, Mr. S. W.	101.41	Yu Tso Ting, Mr 俞佐庭先生	100.00
Williams, Dr. Medicine Co.	20.00	Young, Dr. Arthur N.	10.00
Wong, Mr. T. P.	25.00	Yah Tsing Middle & Primary School	11.00
Wing On & Co. (Shanghai) Ltd., 永安公司	20.00	Yang Wei Ping, Mr.	76.00
Wise, Mrs. E. S.	20.00	Young, Mr. and Mrs. R. C.	20.00
Welles, Dr. Henry H.	10.00	Zeng Kwang Ben, Mr.	2.00
Wei Feng Primary School	10.00	Zea Zoong Bing, Mr.	25.00
Wu Soong Primary School	5.00	Zeng Chung Primary School	10.00
Wong, Mr. H. N.	10.00	Zimmerman, Mrs. Freda,	10.00
Wilkinson, Mr. H. V.	15.00		
Walker, Mr. A. F.	4.00	Total amount	\$ 18,943.85
Ward Road Primary School 華德路小學	14.00	Less amount paid to Printing Dept.	142.76
Yu Dao Tsiu, Mr. 俞道就先生	25.00		
Yang Ching Tsiang, Mr. 楊慶祥	2.00	Total amount	\$ 18,801.09

Report of Superintendent for 1937

The work of the Institution was carried on as usual during the first six months of the year. All of our energies were devoted to preparations for the celebration of the Twentieth—Anniversary of the Opening of the Institution, which was to have been held on the Institution grounds towards the end of October. The school was closed at the end of June for the summer holidays and all who had homes and could return did so. We have had a very successful half year and were all looking forward to the time when we could show our many guests the results of our twenty-five years of work and the wonderful advance we had made during that period. It was to have been a three fold celebration, the Twenty-fifth Jubilee of the Institution, the Twenty-fifth anniversary of the marriage of Mrs. Fryer and myself and the sixtieth anniversary of my birth and incidentally of my arrival in China.

At the end of June we had just completed our long awaited Show and Sales Room. The building of it was made possible by the kind gift of a friend from San Francisco in memory of her father. Our Blindart Workshop had done well and the room was full of beautiful furniture and baskets as the picture will show.

Plans had been made for the building of the school for the Deaf on the property to the south of Girl's Building. More land was to be purchased and suitable buildings erected. A drive for funds was already inaugurated and we expected to have the majority of the amount collected before our anniversary celebration. Parents of the deaf pupils had agreed to raise two-thirds of the required amount and the sub-committee would endeavour to raise the balance.

During the summer months we had allowed the Y. W. C. A. Industrial Section to use one of our buildings and grounds as a summer camp. It was a wonderful success and the girls returned home greatly benefited by the short time of their study and work in the country.

Our plans were however all thwarted by the outbreak of hostilities on the 13th of August. The incessant sound of guns and bursting of bombs from air-planes will never be forgotten and the thousands of refugees fleeing from their homes to a place of safety in the Settlement filled the streets with heart rendering sights. The end of August at the earnest request of the British Consul and the Police we evacuated the girls to McTyiere School through the courtesy of the Acting Principal and Mrs. Fryer and I spent our nights in the Settlement coming out nearly every day to carry on the work as best we could. The teachers were all home for the

holidays and the Supervisors and blind boys and men who remained were in great need of encouragement. It was a dangerous and nerve-racking work.

Then came the sad catastrophe. Mrs. Fryer was taken ill with a bad case of Dysentery and although all was done for her that medical science could do she passed away to her well earned rest on the 25th of October. We had no time to mourn her loss as the day after the funeral the hostilities suddenly veered to our district and it was necessary to evacuate hurriedly our boys and men with such clothing and bedding as could be hastily collected together and moved into the Settlement. The Superintendent of the China Inland Mission Mr. Gibbs, very generously allow us to occupy some rooms in their hostel. Mr. Ho our Assistant Superintendent and three servants remained in the buildings on Hungjao Road for three days but when the shells began to drop they were also forced to evacuate and leave the buildings to their fate.

The following Saturday, the very day we had planned to hold our Jubilee celebration, I watched the shells fired and fall on our buildings tearing great gashes in the roofs and walls, an entirely different afternoon from which we had planned for so long. It was to have been the beginning of a larger and more useful period for the work for the Deaf and Blind.

It was two weeks before I was able to get through the lines to see what was left of our beautiful buildings and grounds. Thirty-three shells had penetrated the buildings and fifty more made craters on the grounds. It was really a terrible sight but it might have been much worse as the damage seemed to be mostly superficial. Had we been able to take possession of the buildings at that time our losses would have been comparatively small, but it was soon occupied by troops and the damage they did was to a great extent worse than the shelling.

I was able to visit the buildings several times afterwards and as soon as possible installed two Indian watchmen who patched up the fence and fastened such doors and windows as could be shut. I left for America the day after Christmas for a much needed rest and endeavour to present an appeal for funds for repairing the buildings and replacing the damaged and missing equipment.

The day before Christmas the American Fourth Marines gave us their usual elaborate Christmas Dinner. It was a bright day for our refugee blind folk and all thoroughly enjoyed themselves. We certainly wish to thank the Marines for their continued generosity which is greatly appreciated by all of our pupils,

There are a great many acknowledgments for thanks that we should mention at this time, but we are very grateful to all of our friends who helped us over this trying ordeal. I wish I could enumerate them all but we trust they will take this general appreciation for what they had so kindly done for us during the past year. We have suffered a great loss but we sincerely hope that upon the foundations of the past we shall be able to build our larger and more useful structure for the benefit of the blind and deaf in China.

GEO B. FRYER
Superintendent.

* * *

**The heaviest burden of the Blind
is not blindness but idleness.**
Helen Keller

* * *

Shanghai,

G. B. Fryer, Esq.,
Superintendent,
Institution for the Chinese Blind,
290 Hungjao Road.

Dear Sir,

Enclosed please find my cheque for
Shanghai \$..... as a donation towards the General
Funds of the Institution for 1939,

Yours faithfully,

.....

.....

Please make cheques payable to Hon. Treasurer, Institution for the Chinese Blind.



New Show Room June 1937
一九三七年六月落成之工藝陳列室

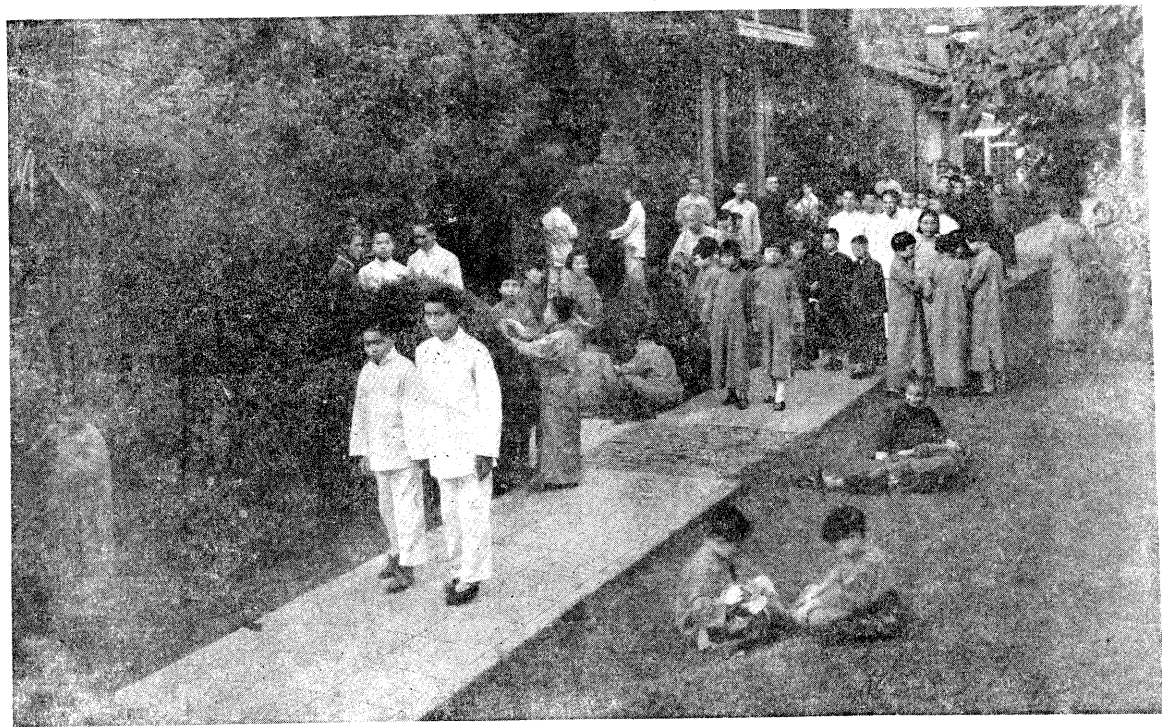


LEONTINE FORD SMITH FRYER

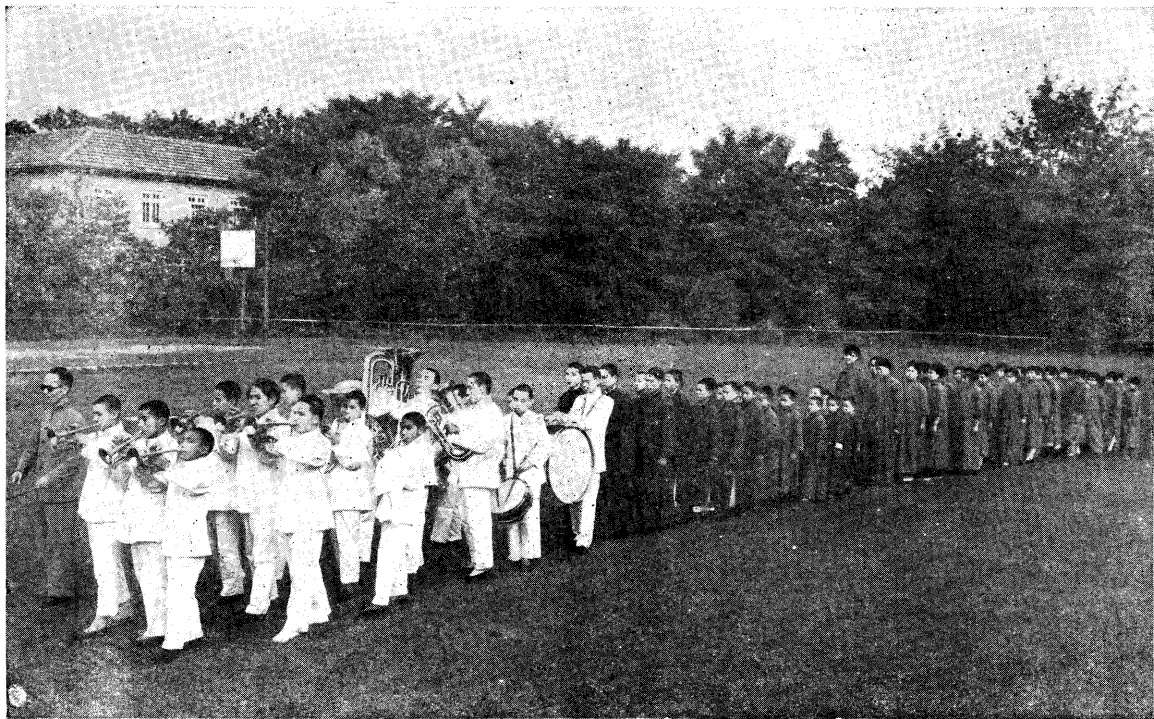
IN MEMORIAM

In memory of Leontine Ford Smith
Fryer, for over twenty-five years Co-
Superintendent of this Institution.

A true wife, a devoted mother
and a sincere friend of the Deaf and
Blind.



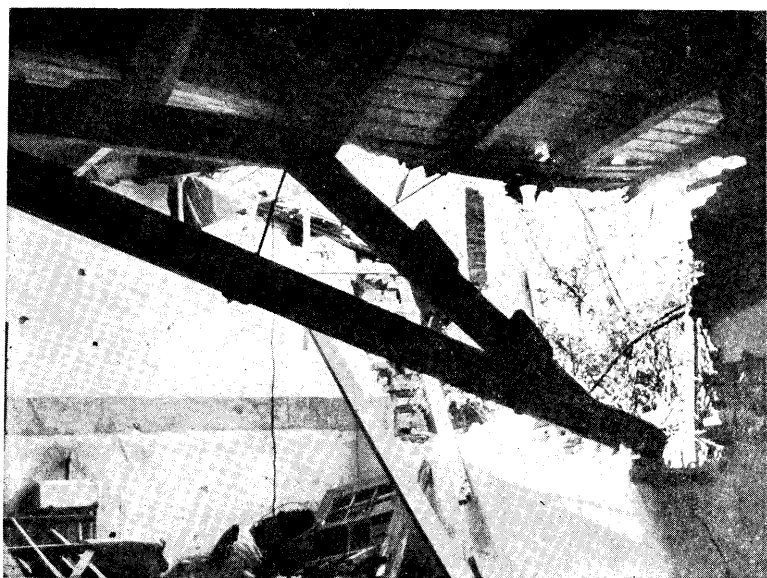
Recess Time
課餘小憩



Out for a Walk
春 遊



Girls Dormitory
女生宿舍



A Shell through Wall and Roof
全部毀滅了

INSTITUTION FOR THE CHINESE BLIND

(Trustees Account)

A. REVENUE ACCOUNT

FOR YEAR ENDED 31st. DECEMBER 1937

EXPENDITURE

To <i>Institution</i>			
Payments to Hon. Treasurer ...	\$6,200.00		
Mr. G.B. Fryer-Reduction of Loan	462.49		
Payment from Burjor Bequest ..	110.00		6,772.49
„ Land Management Fee			40.00
„ Legal & Consular Charges			13.50
„ Brokerage & Transfer Fees			186.56
„ Depreciation for Year Written off			
Buildings	2,868.39		
Furniture & Fittings	138.74		
Equipment	155.95		3,163.08
„ <i>Balance, Surplus for Year Carried to Institution Account ..</i>			197.17
			\$10,372.80

INCOME

By <i>Interest on Investments</i>			
(a) <i>Institution</i>			
S.M.C. Debs. 6% 1945	\$ 650.35		
S.M.C. Debs. 5%	547.50		
Shanghai Waterworks Co. Shares	3,298.09		
Shanghai Waterwork Co. Debs. 6%	2,097.90		
Bank Interest	66.28	\$6,660.12	
(b) <i>Girl's Institute</i>			
Shanghai Land Invest Co. Debentures	1,136.46		
S.M.C. Debentures 5%	192.29		
S.M.C. Debentures 6%	41.96		
Shanghai Power Co. Debentures 5½%	972.23		
Shanghai Telephone Co. Debentures 6%	597.87		
Anglo-French Land Co. Debentures 6%	143.02		
French Mnicipal Council Debentures 6%	18.59		
French Mnicipal Council Debentures 5%	166.44		
G. E. Marden & Co. Ltd.	333.82	3,602.68	
Debentures 6%			
(c) <i>Dady Burjor Bequest</i>			
Shanghai Power Co. Debs. 5½%	110.00	10,372.80	
		\$10,372.80	

B. BALANCE SHEET

as at

31st. DECEMBER 1937

LIABILITIES

Capital Account

Endowment Fund	\$ 69,930.07	
Building Fund	13,986.01	
Dr. Fryer's Donation for Purchase of Land	11,816.78	
Capital Accretions	3,199.53	
<i>Less:</i> Loss on Conversion S.M.C. Debs. 1925	38.46	3,161.07
Profit on Sale of Edinburgh Road Property	119,483.76	\$218,377.69
<i>Lester Bequest</i>		69,930.07
<i>Dr. Fryer's Bequest-Girls Institute</i>		
As at 1st January 1937	\$ 77,451.42	
Add: Further distribution of Estate U.S.\$16,750	55,975.72	133,427.14
<i>Dady Burjor Bequest</i>		1,870.00
		\$423,604.90

ASSETS

I. <i>Land Hungjao Road</i>		
As at 1st January 1937		\$ 75,273.26
II. <i>Buildings</i>		
Cost	\$143,419.65	
<i>Less:</i> Depreciation Written off to 31st December 1936	11,473.56	
	131,946.09	
<i>Less:</i> Depreciation Year to 31st Dec. 1937 2% on Original Cost	2,868.39	129,077.70
III. <i>Furniture and Fittings</i>		
Cost	2,774.74	
<i>Less:</i> Depreciation Written off to 31st December 1936	554.96	
	2,219.78	
<i>Less:</i> Depreciation Year to 31st Dec. 1937 5% on Original Cost	138.74	2,081.04
Forward		\$206,432.00

	Forward	\$206,432.00
IV. <i>Equipment</i>		
Cost	3,118.94	
Less: Depreciation Written off to 31st December 1937	623.80	
	<hr/> 2,495.14	
Less: Depreciation Year to 31st Dec. 1937	155.95	2,339.19
	<hr/>	
V. <i>Investments</i>		
A. Institution		
105 Shares Shanghai Waterworks Co.	40,699.30	
S.M.C. 5% Loan 1937 \$21,900	21,681.00	
Shanghai Waterworks Fittings Co. 792 Shares	1,107.69	
Shanghai Waterworks Co. 1932 6% Debentures ¥25,000	34,965.04	
B. Girls' Institute		
Shanghai Land Invest Co. Debs. 6% 1926 ¥13,100	18,393.00	
Shanghai Land Invest. Co. Debs. 5% 1931 ¥1,100	1,323.07	
S.M.C. Debs. 1934 5% \$5,000	4,950.00	
S.M.C. Debs. 1937 5% \$1,500	1,485.00	
Shanghai Power Co. Debs. 5½% \$19,000	17,682.50	
Shanghai Telephone Co. Debs. 6% \$23,000	22,625.00	
Anglo French Land Co. Debs. 6% ¥2,000	2,797.20	
G. E. Marden & Co. Ltd. Debs. 6% 1930 ¥6,000	8,139.86	
F.M.C. Debs. 1931 6% ¥700	988.81	
F.M.C. Debs. 1934 5% \$18,000	17,010.00	
C. Dady Burjor Bequest		
Shanghai Power Co. Debs. 5½% \$2,000	1,870.00	195,717.47
	<hr/>	
VI. <i>Institution Loan Account</i>		
Balance at 1st January 1937	\$ 14,758.92	
Less: Surplus on Revenue a/c 1937	197.17	14,561.75
	<hr/>	
VII. <i>Hongkong & Shanghai Banking Corporation</i>		
Current Account		3,054.49
VIII. <i>Sundry Debtor</i>		
Institution Advance on a/c of 1938 ...		1,500.00
		<hr/>
		<u>\$423,604.90</u>

INSTITUTION FOR THE CHINESE BLIND

Hon. Treasurer's Accounts 1937.

RECEIPTS:

Balance forward 1936	\$ 100.00	
Received from Hon. Treasurer Trustees	6,200.00	
Received 1938 Account	1,500.00	
Received Girls' School account	110.00	
Shanghai Power Co. Bonus	630.00	
Donations 1937	307.50	
Bank interest	7.33	
Transfer from Supt.'s account	371.60	\$ 9,226.43

DISBURSEMENTS:

Superintendent's salary 1937	\$ 4,200.00	
Superintendent's 1938 advance	525.00	
Advance Supt.'s account	2,100.00	
Advance 1938 account	1,500.00	
Hungjao Area Association sub.	10.00	
Wages Sikh Watchmen, December	60.00	
Balance carried forward	831.43	\$ 9,226.43

Assets and Liabilities 1937.

ASSETS:

Cash on hand	\$ 9.70	
Bills receivable, Deaf School	1,167.00	
Bills receivable, Industrial Dept.	33.00	
Mr. Fryer	50.00	
	1,259.70	
Excess of liabilities over assets	25,257.43	\$26,517.13

LIABILITIES:

Mr. Fryer, loan	\$ 8,563.08	
Trustees' loan	14,561.75	
Kathleen Morrison Fund	350.00	
Ellis Kadoorie Athletic Fund	209.79	
G. B. Fryer allowances	300.00	
Loan from Industrial Dept.	2,420.48	
Home for the aged blind	22.60	
Memorial fund Mrs. Fryer	60.00	
G. B. Fryer	2.00	\$26,517.13

INSTITUTION FOR THE CHINESE BLIND
Receipts and Expenditures 1937 Supt. Account.

RECEIPTS:

Bank cash forward 1936	\$ 1,898.71	
Compradore cash forward	194.50	
Received from Hon. Treasurer	2,100.00	
Received account 1938	1,500.00	
Donations 1937	7,227.93	
Fees & Tuition 1937	1,865.73	
Rent from Deaf School	960.00	
Loan repaid	15.00	
Industrial Dept. Loan	2,420.48	
Memorial Fund Mrs. Fryer	60.00	
Bills receivable	614.77	
Loan payable Mr. Fryer interest	668.56	\$19,525.68
		<hr/>

DISBURSEMENTS:

Transportation	\$ 1,011.50	
Salaries sighted	3,182.90	
Salaries blind	1,925.10	
Wages	1,414.48	
Electricity	336.32	
Telephone	162.27	
Publicity	782.94	
Supplies etc.	819.11	
Board for teachers & pupils	4,650.33	
Medical	220.35	
Printing Dept. Deficit	277.32	
Printing & postage	171.22	
Equipment & repairs	148.23	
Water	306.41	
Interest insurance & taxes	719.70	
Girl's dept.	525.93	
Refund to Mr. G.B. Fryer	48.00	
Home for aged blind	49.40	
Bills payable	2,392.88	
Balance transferred to Hon. Treas. A/c.	371.60	
Cash balance on hand	9.70	\$19,525.68
		<hr/> <hr/>

List of Donations for the Year 1937.

<p>January Chinese Blind Asylum \$ 954.00</p> <p>February Community Church 339.33 Community Church S. S. 18.50 Mr. & Mrs. Killery 40.00 Mr. & Mrs. R. F. Shroff 11.00 Mr. N. G. Harris 25.00 Mr. Yu Dao Tsin 俞道就先生 15.00</p> <p>March Mrs. David Yu 余章日夫人 100.00 Mr. A. J. Hughes 10.00 Mrs. A. N. Young 25.00 Anon 15.00 Mr. Wu Liang Chun 10.00 British Forces Y.M.C.A. 8.48 Rev. Arnold Bryson 5.00 Donation Box 5.00 Tag Day Mary Farnham School 200.00</p> <p>April Mr. W. J. Keswick 5.00 Mr. Ernest Hayes 10.00 Community Church 3.50 Tag day anon 11.70 Mr. William Kleim 10.00 Mr. Lu Tse Puh 25.00 Tag Day Public School for Chinese 100.00 Mrs. Florence Nazar 10.00 Rev. C. F. MacRae 25.00 A Chinese friend 25.00 Mr. & Mrs. E. Lester Arnold 20.00 Miss Madge Ashley 20.00 Tag Day Ellis Kadorie School 55.83 Tag Day Miss Ashley 25.13 Mr. & Mrs. Rayden 15.00 Ching Hai Girls' School 10.00 Miss S. M. Burdick 10.00 Dr. C. E. Patton 10.00 Tag Day N. C. Daily News 19.00 Navy Y.M.C.A. 15.00 Mrs. F. B. Spengler 12.32 Anon 5.00 Tag Day Collections 1,934.21 Tag Day Nieh Chih Kwei School 135.20</p> <p>May Mr. Sung Kyih Ching 20.00</p>	<p>Donation Box 12.78 Tag Day Polytechnic School 26.32 Mr. Eric G. Clarke 15.00 Tag Day Collections Mr. Hayes 70.00 Tag Day Mrs. Lee 10.35 Dr. H. L. Yen 30.00 Ministering Children's League 211.00 Miss Beulah Chang 10.00 Madam Tong 9.50 Fourth Marine Church 65.25 June Two Friends \$ 10.00 Anon 100.00 Cathedral Sunday School 50.00 Staff of S.M.C. Eastern District Girls' School 10.00 Nor. District Prim. School 22.00 Ward Road Prim. School 30.00 Boone Road Prim. School 20.00 Students of S.M.C. E. District Girls' School 46.15 Ward Road Prim. School 10.63 Kinchow Rd. Prim. School 47.32 Isheng Prim. School 8.00 E. Well Rd Prim. School 10.70 Sinza Rd. Prim. School 108.29 Chinese Women's Club 200.00 Community Church 1.00 Mr. W. J. Keswick 20.00 Shanghai Race Course 400.00 Anon 10.00 July Chinese Blind Asylum 974.00 British Force Y.M.C.A. 8.74 Donation Box .60 Mr. Siu Feng Huang 58.00 August Donation Box 20.70 December Girls' Friendly Society in Memory Col. T.E. Trueman 5.00 Miss H.A.E. Willis 25.00 Mr. M. Votav 10.00 Chinese Blind Asylum 200.00 Miss L. J. Graves 20.00 Ladies of Children's Refuge 10.00</p> <p style="text-align: right;">Total \$7,227.93</p>
---	---

IN MEMORIAM.

It is with deep regret that we have to record the passing on of four revered members of our Committee of Management during 1938.

MISS SUSIE M. BURDICK

Dr. FONG F. SEC

DR. TANG SHAO YE

MR. WANG I TING

MISS SUSIE M. BURDICK—A faithful Trustee since the foundation of the Institution. Her twenty-six years of devotional, self-sacrificing service on the Committee of Management will never be forgotten.

DR. FONG F. SEC.—An energetic member of the Committee for nearly twenty years. His valuable advice and deep sympathy have done much for the welfare of the Institution.

DR. TANG SHAO YE.—One of our oldest friends and advisors. He was always ready to give the blind and deaf any assistance within his power.

MR. WANG I TING.—A noted philanthropist and genuine friend of the handicapped and unfortunate. His keen interest in the Deaf and Blind was always a source of inspiration to us. His loss can never be replaced.

Superintendent's Report 1938.

The year 1938 will always be remembered as the most critical and most disastrous year of our existence. Early in the Autumn of 1937 it was imperative that the blind girls be evacuated, the Acting Principal of McTyiere School kindly allowing us to use rooms in their vacant dormitory. Towards the end of October we were obliged to evacuate the blind boys and men owing to the sudden veering of hostilities to the Hungjao area. It is well we did so for our buildings during the next few days, suffered a severe bombardment which badly damaged the buildings and grounds. During part of November troops occupied such of our buildings as were useable and when they left we found that a great deal of our equipment and personal effects had either been damaged or had disappeared entirely. The personal effects of our blind population and a good deal of my own property were missing.

January of this year therefore found all those who had no homes or who were unable to get to them, safely housed in quarters very kindly loaned by the Director of the China Inland Mission. We were cramped and crowded with no equipment or furniture. A few chairs and tables were purchased, but as we had no beds the blind boys and girls had to sleep on the bare cement floor with but little bedding. Fortunately a little rice straw could be obtained which was used in place of mattresses and which was certainly appreciated. The members of the China Inland Mission were kindness itself and did all they could to make us as comfortable as possible, reading, writing and classes were carried on to some extent but neither teachers nor pupils had any heart or ambition to do much. Food was scarce and very expensive but all managed to exist and were thankful to be in a safe place and well looked after.

On July the 28th, as the China Inland Mission required the rooms we occupied in their hostel for other purposes, we moved to St. Luke's Refugee Hospital No. 2 on Brenan Road. This was made possible through our chairman and the generosity of Dr. J. C. McCracken who kindly allowed us the use of a part of one of their buildings. Camp beds were purchased as well as extra tables and stools. We were therefore able to carry on in more comfortable and convenient quarters.

In November 1937 we took over the care of the ten men from the Chinese Blind Asylum who had been forced to evacuate their premises in the native city. A building was rented on Jessfield Road for their occupation and ten of our industrial workers moved over to the same building which relieved to a certain extent the

overcrowding of the rooms in the China Inland Mission. On November the 3rd, 1938, these men were also moved to our present quarters on Brenan Road.

On November the 1st we reopened the School Department on a small scale. We found several of our pupils, who had returned to their homes a year before and who were most desirous of returning, and these with the boys and girls we were already caring for will form a nucleus of a school we hope to have in the near future. The Blindart Workshop was also reopened in a very humble way in order to give our twelve industrial workers, who depend upon this work for their livelihood, occupation for an hour or two each day instead of having to spend their whole time in enforced idleness.

We have thus made a beginning again with the assurance that with the help and sympathetic interest of each member of the Committee and our many friends we shall soon be able to recover the ground and business that we had been forced to lose during the past year and a half.

MR. FRYER'S FURLOUGH.—I left Shanghai on the 26th of December 1937 and was absent a little over eight months. I proceeded to San Francisco, there I spent about six weeks with my sister, for a much needed rest and recuperation. I then went to New York making several stops on the way, visiting schools and work for the blind and deaf. In New York I made several valuable contacts and laid the necessary foundation for our appeal for funds to cover the temporary repairs of the buildings and the replacement of equipment and effects. I met my old friend Dr. Helen Keller and she very kindly promised to write and sign our letters of appeal. I spent over a month in England and returned to New York with my daughter who had been for three months studying the systems and methods used in the education of the Blind, in a school for the Blind in London. This arrangement was made through the courtesy of Mr. Eagar, Secretary-General of the National Institute for the Blind of that city.

The secretary of the American Advisory Committee, Mr. Edgar H. Rue had prepared and printed a leaflet containing photographs and information in regard to the Institution and its present urgent needs. That pamphlet with Dr. Helen Keller's letter of appeal was sent to thirteen thousand addresses which several organization in connection with the work for the Blind or interested in helping us to raise funds for the Blind in China had very kindly allowed us to use. The total returns so far amount to a little over U.S.\$8,000.00, and after paying our necessary heavy expenses in connection with the printing and forwarding these letters of appeal we will have a

little more than sufficient to pay for the necessary repairs on our buildings and replacement of much needed equipment.

The keen interest manifested in China and a sincere desire to assist us in this our most critical time was very apparent everywhere I went in America or England. We are certainly extremely grateful to these of our friends who have given so generously to this fund and assisted in the organization of the campaign.

I am now preparing a further appeal to the different institutions for the Deaf and Blind in America whereby I hope to realize sufficient funds to cover our deficit in running expenses during 1939.

DAMAGE TO BUILDINGS AND GROUNDS CAUSED BY HOSTILITIES.—The damage to buildings and grounds caused by shell fire was considerable and the general impression on viewing the buildings from the road was that the place and buildings were in ruins. A thorough survey was very kindly gratuitously made by Mr. N. W. B. Clarke and Mr. N. C. Wheeler who spent several arduous days in preparing it in January 1938. Their report is as under:—

“During the period of active hostilities in and around Shanghai from approximately August 1937 to the date of this report, measured in January 1938, all buildings have been occupied by military forces and the district has come within the area of active fighting.

Damage has occurred by the following causes:—

(a) Military Occupation:

During which period all buildings have been put to abnormal usages.

(b) By shot, shell and bombs:

Each building has suffered from direct hits by shells, resulting in structural damage. Roofs had been sprung by shock and vibration which has broken the original setting between walls, beams and the roof members and coverings. Walls have been holed and windows and glass shattered.

Approximately thirty-five heavy missiles have registered direct hits on walls and roofs.

In addition, Bombs and Shells have fallen in the grounds and compounds, and in close proximity to the buildings. The masonry and structure show defacement from splinters and shrapnel and direct evidence of shock, and movement and fracture.

(c) By Military Searching Parties:

Doors had been forced or broken: built-in cupboards and fittings had been broken open and all contents searched and left on the floors.

(d) By weather and water:

Water has entered through holes in the roofs, walls, and shattered windows and has percolated through all stories causing overhaul of all ceiling, walls and floors to be necessary.

(e) By waste through neglect:

A general deterioration of the fabric has resulted through water, dampness, absence of winter heating and omission of regular attention and cleansing.

Gardening:

Approximately fifty shells or bombs have cratered the center playing ground, compound and garden areas but the active damage to trees, shrubs and lawns is not extensive. Waste by neglect and destruction by misuse and injury to growth by the tearing of trees for firewood accounts for the major cost of reinstatement.

REPAIRS TO BUILDINGS.—Repairs to the buildings and grounds are now nearly completed with the exception of painting and whitewashing which will probably not be done until late spring. It will be interesting to note that the contractor used over seven thousand new tiles on the roofs and replaced over three thousand panes of glass. The following is an estimated cost for repairs and war relief expenses.

Repairs to School Building, C Dormitory & Kitchen ...	\$ 1,864.11
Repairs to Administration Building	1,640.00
Labour in clearing debris	125.00
Electrical repairs wiring etc.	1,434.00
New bulbs and shades required and fittings	200.00
Repairs to the insides and outsides of buildings except those mentioned above, including fences etc.	8,747.00
Extras not included in the above contract	391.00
Water system repairs, estimated	100.00
Garden and clearing debris from grounds etc. estimated	100.00
Painting and white-washing interior & exterior of buildings	5,000.00
Watchmen's wages during hostilities	1,440.00
Repairs to kitchen stoves	100.00
	<hr/>
	\$21,141.11

REPLACEMENT OF EQUIPMENT ETC.—A great deal of equipment and apparatus was destroyed or is missing. Estimated repairs and replacement will be in the neighbourhood of six thousand dollars, which includes personal losses of the blind population, but not personal losses of the Superintendent.

MEDICAL—The health of the pupils has not been up to the usual standard. At the China Inland Mission it was necessary for them to sleep on the bare cement floor and the available dormitory space was much crowded. We had several cases of measles and the number of those having colds or fevers was unusually high. We had fifteen cases of Beri Beri, one case being that of an industrial worker sent by the Catholic Sisters. He was eventually moved to their hospital. There were two cases of Dysentery in the Blind Asylum house both of which proved fatal. We had, two cases of Tuberculosis among the girls from Hangchow and one unfortunately proved fatal and the other is still in a serious condition in the Tuberculosis Department of St. Luke's Hospital. As we were short of funds the pupils have had only one full meal a day with congee in the morning and evening. While this has been sufficient to sustain life it has proved insufficient for growing children and a number seem to have suffered from deficiency. Our sincere thanks are due to the doctors of the C. I. M. and St. Luke's Hospital for their care of the more serious cases throughout the year. All have been vaccinated against small pox and cholera. In the beginning of December we had a mild case of small pox but the patient was at once removed to the Municipal Isolation Hospital and fortunately no other cases have developed.

STAFF.—Our depleted staff has worked very hard and a great deal of credit is due to their interest and devotion to the pupils. Mr. Ho remained with full salary, the others receiving but a portion. Our blind graduates on the teaching staff, received no salary during the emergency. Mr. Van remained at home and was able to support himself by tutoring seeing pupils. Mr. Fu and Mr. Wu Shao-yung were also able to procure seeing pupils. Our teachers lost nearly all of their belongings at Hungjao Road and I trust that the Committee will be able to compensate them. With no salary and with the loss of clothes etc. they have had a very serious time of it.

BLIND POPULATION.—Our blind population has suffered to no small extent since the beginning of hostilities. Many have lost their homes and families and all their clothes and personal effects. At the beginning of the year we had in all fifty-eight, as under: girls 13, boys 15, industrial workers 14, printing workers 2, Blind Asylum adults 10, teachers 4, total 58. During the year our population has increased or diminished as under: admitted boys 3, blind Asylum adult 1, returned pupils, boys 7, girls 4, returned teachers 2, returned graduate 1, total 18. Left the Institution, Asylum adult

1, teacher loaned to Tsingtao School, 1, industrial worker 1, printing worker 1, Died, Asylum adults 2 and 1 girl from T. B. total 7, making a net increase of 11. We have now 16 girls, 23 boys, 8 Blind Asylum adults, 13 industrial workers, 1 printing worker, 5 teachers and 3 returned students, making in all 69.

EDUCATIONAL.—Studies had been carried on throughout the year but very little new work has been accomplished and practically nothing has been done in the musical, physical or industrial lines. We now have 39 pupils in the School Department, regular work having started on November the 1st.

PRINTING PRESS.—Our two stereotyping machines seem to be intact though rusty from not being used. The Press is also in fairly good condition. A number of zinc plates were destroyed by shells and others used to cover broken window panes. The stock of books and paper has been seriously damaged. I hope to be able to have a stereotyping machine removed to Brennan Road so that we can carry on with our monthly and weekly magazines besides the hymn book which we have already started. The generous gift of G.\$100.00 from Mr. Barr, the Chairman of the American Printing House for the Blind was greatly appreciated and will probably be used to reinstate this department and assist us in carrying on.

BLINDART WORKSHOP.—Our entire stock of chairs, furniture and baskets was either looted or destroyed. A few baskets have been found in a damaged condition, but our stock of reed and rattan is in fairly good order as well as our lumber. On November the 1st. I moved the rattan and baskets to Brennan Road where work on a small scale has commenced. Our industrial workers had been idle for over a year so that a chance to work even for an hour or as a day is very welcome. It will take us a long time to recover from the serious losses we have sustained not only in damage to our building and material but also in our business.

SCHOOL FOR THE DEAF.—The hostilities commenced during the summer holidays so that nearly all of our deaf pupils were at their homes. When the time came for the reopening of the school in September Mr. C. Y. Wang, the Principal, was able, after a great deal of inconvenience, to collect about ten pupils and start a small school in rented quarters on Hardoon Road. Many more have applied for admission and the school was removed to larger quarters on Gordon Road. There are now over forty pupils and the school is still self-supporting. The rooms are however too small and unhygienic, and it is hoped that other accommodations will be found in the near future. A great deal of credit is due to Mr. Wang for his untiring efforts in regard to the school for the Deaf which has enabled it to carry on in spite of the most trying circumstances.

CHRISTMAS FESTIVITIES.—The chief event of the Christmas festivities was as usual the annual dinner given the pupils by some of the United States Fourth Marines. This is the ninth year of this generosity on their part and it is very greatly appreciated by the participants. This year the dinner was held on Brennan Road on Friday, the 23rd of December. Sixty-six blind people sat down to the very sumptuous repast. Bishop Roberts, Chairman of the Trustees of the Chinese Blind Asylum was present and very kindly offered the blessing. The Shanghai Rotary generously sent us one hundred dollars and a number of toys for our smaller children, also frozen sweets for all. The Community Church White Christmas sent twenty-five dollars, some milk and some cereal. On Christmas afternoon the pupils gave their usual programme. It however was not as interesting as in former years but it was quite a creditable effort since they all had had a year's enforced idleness.

ACKNOWLEDGMENTS.—Our grateful thanks and appreciation are due to all who have assisted, often through no small sacrifice to themselves, in our work of recuperation this year. That we have been able to complete the year with much satisfaction and recover so much of our old spirit is due to the deep sympathy and encouragement of all our friends. We especially wish to let our supporters in New York and other places in America know how appreciative we are of their generous response to our appeal for funds, to be used for repairing our buildings replacement of equipment and carrying on of our daily expenses, and work. To our old friend Dr. Helen Keller for her very kind letter and Mr. Edgar H. Rue for so ably organizing the appeal we are especially grateful, and all others who through their sympathy and advice have made possible the success of the undertaking. We are confident we can rely in their continued help until we are on our own feet once more and can safely emerge from our valley of shadows. Our American friends have also continued their gifts of Braille magazines and literature which has enabled us to pass many a lonely hour.

It is once more our pleasant duty to thank the U. S. Fourth Marines for their sumptuous dinner and Mr. Wang the S. V. C. Caterer for loaning the dishes and cutlery for the occasion, also the Rotary Club for their continued generous support and the Community Church, in all its branches, for remembering us at Christmas and other times.

The Director and members of the China Inland Mission for their forbearance in allowing us to occupy their rooms for such a long period, and Miss Bissett, Miss McFarlane, Mr. Bourne and others for their timely sympathy and assistance in our hour of need. Their personal and unselfish interest has made a very great impression on our pupils.

Dr. McCracken and staff of St. Luke's Hospital has been most generous in allowing us the use of one of their buildings and in looking after us especially in hospital care and medical aid.

The Trustees of the Chinese Blind Asylum for their continued help with scholarships and much appreciated advice, and finally all who have sent in donations of money, old magazines, Braille literature, and other articles, not forgetting the B. W. A. Hospital Section for much needed bandages and supplies.

We enter this new year full of hope for the future with the additional assurance of much needed assistance and sympathy from our friends not only in China but all over the world.

GEO. B. FRYER
Superintendent.

List of Donations 1938.

Community Church Shanghai American School	\$ 20.00
Dr. T. Z. Kaung	50.00
Anonymous	25.00
Anon.	10.00
Mr. and Mrs. G. A. Anderson	20.00
Moore Memorial Church 慕爾堂	30.00
St. Marie' School, Tientsin	17.00
Mrs. MacGregor	40.00
Associated Foreign Charities	200.00
Mr. and Mrs. W. E. Sauer	10.00
Shanghai Ladies' Society	100.00
Mr. Hwang Sieu Fong 黃秀峯券生	58.00
The Hwa Cha Co., 華茶公司	100.00
Rev. Arnold Bryson	6.00
Readers of Evangelist Christian	27.80
Mr. Julian	25.00
Mr. S. M. Joseph	15.00
Shanghai Rotary Club	100.00
Dr. C. E. Paton	10.00
Trustees Parsee Cemetery	171.50
Foreign Missions, Australia	50.00
Mr. P. A. Molloy	50.00
Community Church	25.00
Community Christmas	25.00
St. Mary's Hall	10.02
	<hr/>
	\$1,195.32
	<hr/>

INSTITUTION FOR THE CHINESE BLIND
(Trustees Account)

A. REVEUNE ACCOUNT
FOR YEAR ENDED 31st DECEMBER 1938

EXPENDITURE

<i>To Institution</i>			
Payments to Hon. Treasurer	\$8,750.00		
Payments to Superintendent .	1,500.00		
Fire Insurance	34.75	\$10,284.75	
<i>„ Depreciation</i>			
Buildings	2,868.39		
Furniture & Fittings	138.74		
Equipment	155.95	3,163.08	
			\$13,447.83

INCOME

<i>By Interest on Investments</i>			
<i>(a) Institution</i>			
S.M.C. Debs. 5%	\$1,095.00		
Shanghai Waterworks Co. Shares	3,190.91		
Shanghai Waterworks Co. Debs.			
6%	2,097.90		
Bank Interest	61.29	\$6,445.10	
<i>(b) Girl's Institute</i>			
Shanghai Land Invest. Co. 6%			
Debs.	1,099.30		
Shanghai Land Invest. Co. 5%			
Debs.	76.92		
S.M.C. Debs. 5% 1934	250.00		
S.M.C. Debs. 5% 1937	75.00		
Shanghai Power Co. Debs. 5½%	1,045.00		
Shanghai Telephone Co. Debs. 6%	1,380.00		
Anglo-French Land Co. Debs.			
6%	167.84		
F.M.C. Debentures 6%	58.74		
F.M.C. Debentures 5%	900.00		
G. E. Marden Co. Ltd. Debs.			
6%	503.50	5,556.30	
<i>(c) Dady Burjor Bequest</i>			
Shanghai Power Co. Deb. 5½%	110.00	12,111.40	
<i>„ Balance, Deficit for Year Carried</i>			
<i>to Institution Account</i>			
		1,336.43	
			\$13,447.83

B. BALANCE SHEET AS AT 31ST DECEMBER 1938

LIABILITIES:

I. <i>Capital Account</i>			
Endowment Fund	\$	69,930.07	
Buildings Fund		13,986.01	
Dr. Fryer's Donation for Purchase of Land		11,816.78	
Capital Accretions		3,161.07	
Profit on Sale of Edinburgh Road. Pro- perty		119,483.76	\$218,377.69
<hr/>			
II. <i>Lester Bequest</i>			69,930.07
III. <i>Dr. Fryer's Bequest Girl's Institute</i> As at 1st January 1938			133,427.14
Add: Further distribution of Estate	U.S.\$	1,995.00	
IV. <i>Dady Burjor Bequest</i>			1,870.00
V. <i>Special War Relief Fund Donation</i> ..		1,020.37	
Received from Committee in New York U.S.\$1,000		5,373.74	6,394.11
<hr/>			
Received from Committee in New York U.S.\$3,990.00			
Add: Bank Interest 3.54		3,993.54	
<hr/>			
	U.S.	\$5,988.54	\$429,999.01
<hr/> <hr/>			

ASSETS

I. <i>Land Hungjao Road</i>			\$ 75,273.26
II. <i>Buildings</i>			
Cost	\$	143,419.65	
Less: Depreciation Written off to 31st Dec. 1937		14,341.95	
<hr/>			
		129,077.70	
Less: Depreciation Year to 31st Dec. 1938 2% on Original Cost		2,868.39	126,209.31
<hr/>			
III. <i>Furniture and Fittings</i>			
Cost		2,774.74	
Less: Depreciation Written off to 31st Dec. 1937		693.70	
<hr/>			
		2,081.04	
Less: Depreciation Year to 31st Dec. 1938 5% on Original Cost		138.74	1,942.30
<hr/>			
IV. <i>Equipment</i>			
Cost		3,118.94	
Less: Depreciation Written off to 31st Dec. 1937		779.75	
<hr/>			
		2,339.19	
<i>Equipment</i>			
Less: Depreciation Year to 31st Dec. 1938		155.95	2,183.24
<hr/>			

V. *Investments*

A. *Institution*

105 Shares Shanghai Waterworks Co.	40,699.30	
S.M.C. 5% Loan 1937 \$21,900	21,681.00	
Shanghai Waterworks Fittings Co. 792 Shares	1,107.69	
Shanghai Waterworks Co. 1932 6% Debentures ¥25,000	34,965.04	

B. *Girl's Institute*

(a) Shanghai Land Invest. Co. Debs. 6% 1926 & 1931 ¥13,000	18,393.00	
Shanghai Land Invest. Co. Debs. 5% ¥1,100	1,323.07	
S.M.C. Debs. 1934 5% ¥5,000	4,950.00	
S.M.C. Debs. 1937 5% \$1,500	1,485.00	
Shanghai Power Co. Debs. 5½% \$19,000	17,682.50	
Shanghai Telephone Co. Debs. 6% \$23,000	22,625.00	
Anglo French Land Co. Debs. 6% ¥2000	2,797.20	
G. E. Marden & Co. Ltd. Debs. 6% ¥6,000	8,139.86	
F.M.C. Debentures 1931 6% ¥700 ..	988.81	
F.M.C. Debentures 1934 5% \$18,000	17,010.00	
(b) War Loan £400 3½% U.S.\$1,895.40		

C. *Dady Burjor Bequest*

Shanghai Power Co. Debs. 5½% \$2,000	1,870.00	195,717.47
--	----------	------------

VI. *Institution Loan Account*

Balance at 1st January 1938	14,561.75	
Add: Deficit on Revenue a/c 1938	1,336.43	15,898.18

VII. *Special War Relief Fund*

Expenditure on Repairs etc.		8,746.34
-----------------------------	--	----------

VIII. *Hongkong & Shanghai*

Banking Corporation

U.S.\$ account	U.S.\$4,093.14	
Chinese Dollars		4,028.91
	U.S. \$5,988.54	\$429,999.01

INSTITUTION FOR THE CHINESE BLIND

Assets and Liabilities Supt.' Account 1938.

ASSETS:

Balance cash on hand, Bank	\$ 828.82	
Balance cash on hand, Cash	63.09	
Bills receivable, Deaf School	1,167.00	
Bills receivable Industrial dept.	33.00	
War relief expenses to be refunded	1,880.98	
	\$ 3,572.89	
Excess of liabilities over assets	25,601.99	\$29,174.88

LIABILITIES:

G. B. Fryer loan	\$ 9,248.13	
Trustees' loan	15,898.18	
Industrial loan	2,420.48	
Kathleen Morrison Fund	350.00	
Ellis Kadoorie Athletic Fund	209.79	
G. B. Fryer May & June 1937 allowances	300.00	
G. B. Fryer balance salary 1937	748.30	
	748.30	\$29,174.88

INSTITUTION FOR THE CHINESE BLIND

Hon. Treasurer's Account for Receipts and Disbursements 1938.

RECEIPTS:

Balance brought forward		
Bank	\$ 831.43	
Cash	9.70	\$ 841.13
Donations		
General	1,195.32	
Scholarships & fees	2,500.00	3,695.32
Sale of rattan ware		61.75
Received from Trustees		10,250.00
Bills payable		748.30
Received from Chinese Blind Asylum		
Trustees	1,639.00	
Board Ind. workers	543.00	
	543.00	\$ 2,182.00
		\$17,778.50

DISBURSEMENTS:

Balance from Trustees' A/c. 1938		\$ 1,500.00
Clothing		194.69
Food		
Rice	1,058.84	
Vegetables etc.	1,554.67	2,613.51
	<hr/>	
Fuel etc.		288.38
Laundry		98.26
Lighting electricity		72.72
Medical expenses and supplies		275.87
Outstanding accounts		1,358.65
Printing & stationery		56.11
Postage & petties		15.60
Sundries		403.75
Salaries		
Sighted	1,731.00	
Blind	164.00	1,895.00
	<hr/>	
Salary Superintendent		3,675.00
Wages servants		213.86
Water		81.10
Telephone		45.65
Publicity		150.00
Transportation		300.00
Blindart Workshop expenses		177.23
Chinese Blind Asylum expenses		1,990.23
Balance carried forward		
Suspense A/c. war relief expenses ..	1,880.98	
Bank	428.82	
Cash	63.09	2,372.89
	<hr/>	
		<u>\$17,778.50</u>

**Every dollar you spend
 on a Blindart chair
 Provides a blind worker
 with his daily fare.**



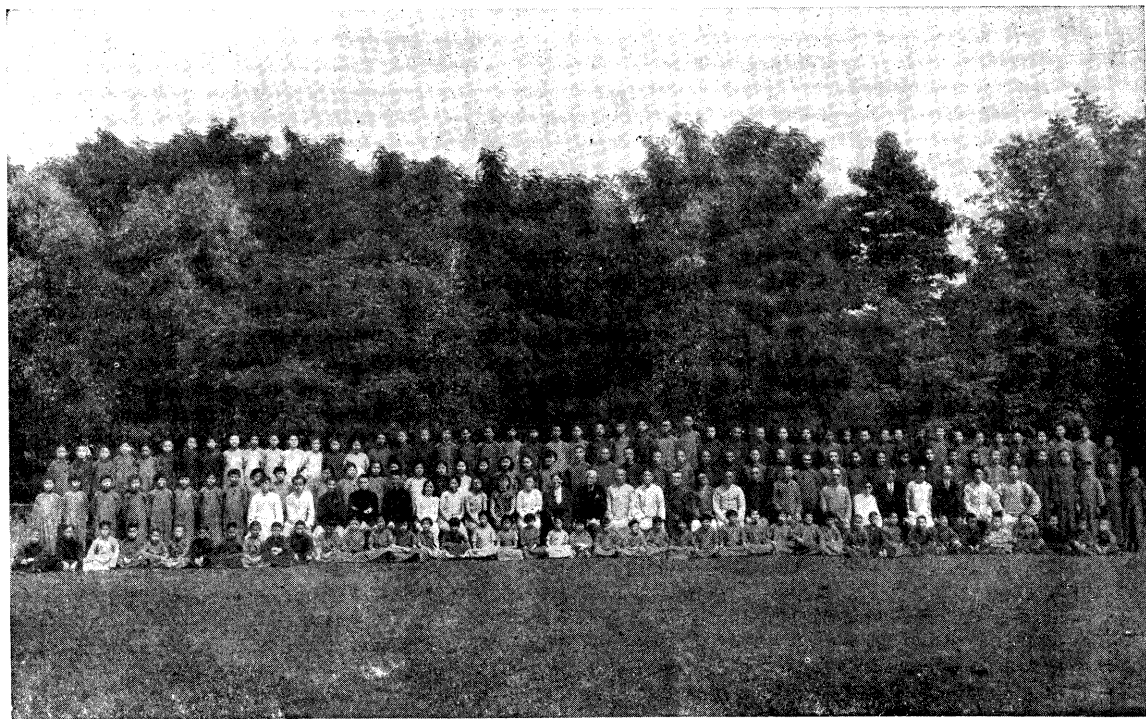
Teachers of Deaf and Blind Schools
全體職教員



Blind Girls
盲女生



上海图书馆藏书



Our Family June 1937

盲啞一家

Institution for the Chinese Blind

Founder

DR. JOHN FRYER

Board of Trustees

MR. M. READER HARRIS, *Chairman*
MR. ERIC G. CLARKE, *Hon. Secretary*
MR. ADAM BLACK, C. A., *Hon. Treasurer*
MR. GEORGE A. FITCH

Committee of Management

MR. L. C. HEALEY	MR. Y. LEWIS MASON
MR. J. C. OLIVER	MR. P. K. CHU
DR. CARLETON LACY	MR. H. C. CHEN
MR. A. S. BASKETT	DR. H. P. CHU

MRS. P. W. GIOVANNINI, *Representing American Women's Club*
MRS. B. K. CHUN *Representing Chinese Women's Club*
MRS. N. A. VILODAKI, *Representing British Women's Association*
MR. FRED C. SZE, *Representing Shanghai Rotary Club*

Officers

GEO. B. FRYER, *Superintendent and Secretary*
HO CHIH TSEN, *Assistant Superintendent*
WONG GING YUEN, *Assistant Superintendent, Deaf School*
MISS R. A. FRYER, *General Assistant*
DJENG CHING, *Supervisor and Steward*
N. C. HSU, *Assistant in Office & Teacher*
MRS. MAO, *Matron*

School Department

*VAN FOO BAO, *B. A. Head Teacher*
*FOO TSE TEH, *Teacher of English*
*WONG TEH BAO, *Teacher*
*CHANG LIEN CHENG, *Director of Music*
*WU SHAO YUNG, *Teacher of Music*

*Blind.

INSTITUTION
FOR THE
CHINESE BLIND

盲 童 學 校
MANG T'UNG HSIOH HSIAO

290 Hungjao Road
Shanghai,
China.

Annual Reports
1936-1937-1938