

N·E·W·S & E·V·E·N·T·S

Jets, Band, Ribbons and Speeches Welcome Air Force ROTC to RIT



RIT will honor the U.S. Air Force as the latest of the military services to offer a Reserve Officer Training Corps (ROTC) program when the Air Force ROTC program officially opens its doors on Thursday, Sept. 12.

President M. Richard Rose will present welcoming remarks at 10:30 a.m., followed by guest speaker General Andrew P. Iosue, commander, Air Training Command, Randolph Air Force Base,

Tex. Events of the day, to be held in the circle in front of the College-Alumni Union, will include an Air Force officer career van, open from 8 a.m. to 2 p.m., a concert by the Air Force Band at 9:30 a.m., with ceremonies and speakers at 10:30 a.m. In addition, A-10 Thunderbolt II jets in close formation will fly over the campus during the ceremonies.

A ribbon cutting ceremony officially opening the new ROTC offices and facilities will be held at 1 p.m. on the third floor of the George Eastman Memorial Building.

Air Force Lt. Col. James W. Jacobs, Jr., has been assigned command of the new program. "We are very excited and happy to have our program at RIT," said Jacobs. "We feel our presence on the campus will have many mutual benefits for both the Air Force and RIT. We are offering many full scholarship opportunities as well as guaranteed employment and exciting career challenges for students.

"Nationwide, more than 1,500 cadets have full scholarships covering tuition, textbooks, fees and living expenses. The awards are based on 'the whole person

concept,' in which academics plays a significant part," Jacobs added. He believes that the financial incentives are the primary reason for ROTC's popularity.

RIT and the University of Texas at San Antonio were selected last fall to join the 150 universities across the country that host Air Force ROTC programs. According to Jacobs, RIT was selected because of its numerous programs in the sciences, engineering, computer science, microelectronic engineering, as well as its business programs.

The Army ROTC program at RIT has enrolled 3,000 students over the past 15 years. RIT students also participate in the Navy ROTC program at the University of Rochester, which was established in 1947.

Interest in ROTC training among college students has grown dramatically in the last decade. During the era of the anti-war movement in the early 1970s, about 6,000 students were enrolled in Air Force ROTC across the nation. More than 26,000 are currently enrolled.

President Rose Presents State of the Institute

Dr. Thomas Plough, provost and vice president for Academic Affairs, has announced the following schedule for the September 3, opening day for 1985-86 academic year.

All members of the faculty and professional staff are invited to a coffee hour to begin at 8:00 a.m. in the Fireside Lounge. At 8:30 a.m., President Rose will give his annual State of the Institute address in Ingle Auditorium. Important announcements regarding upcoming activities also will be made.

The day will conclude with a reception, hosted by Dr. Plough and the Faculty Council, at 3:30 p.m. in the 1829 Room.

At 3:00 p.m. in Ingle Auditorium Dr. Rose will repeat his State of the Institute address for other members of the RIT community.

AVI Lands Disc Contract in LA

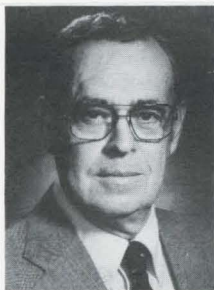
The American Video Institute Videodisc and Optical Publishing Laboratory (AVI) at RIT has been awarded a contract to design a videodisc system for the city and county of Los Angeles. The system, containing two million images, will be the largest collection of randomly accessible video images in the world.

AVI director John Ciampa says that work has already begun on the design phase of the project. "The challenge of the design is the layout and orientation for the user," says Ciampa. "It will be designed so that at no time will a user be lost in this morass of images."

The system will provide an electronic "window" in which a user can examine aerial and ground images anywhere in Los Angeles County. Ciampa noted that among those using the system will be city planners; public agencies; tax assessors; realtors; and police, fire, street maintenance, and public transit personnel.

AVI has licensed the technology to a company based in Dayton, Ohio, called Landisc Systems Inc., which will collect the images using equipment designed by AVI.

Rice Named McGhee Professor; Nationally Known Photofinisher



James E. Rice

James E. Rice has been named the James E. McGhee Professor in Photographic Management in the School of Photographic Arts and Sciences. Rice will also serve as chairman of the photographic processing and finishing management department.

"Jim Rice brings a wealth of experience in the photofinishing industry to RIT and

a contagious interest in the education of students," says Dr. Thomas R. Plough, provost and vice president for Academic Affairs. "He is a welcome addition to our nationally known faculty in the photographic processing and finishing management program."

Thomas P. Iten, director of the School of Photographic Arts and Sciences, says of the appointment, "Jim Rice is well-respected throughout the industry. His knowledge of the industry will help this already excellent program become even better."

Rice hopes to place increased emphasis on the business management aspect of the program. "What I want to do is position graduates so they have more business acumen. It's important to know production and photography, but you also need to know how to handle the dollars and

cents," he says. He plans to work closely with the College of Business to develop an "interdisciplinary bridge" between his programs and the photographic marketing program in the College of Business.

A 1951 graduate of Cornell University, where he received a degree in marketing, Rice joined Eastman Kodak Company in 1955 and was most recently director of photofinishing equipment sales. He retired from Kodak this year.

From 1980 to 1982 he was co-director of the Disc Camera Program Launch. He was responsible for devising equipment packages that would help photofinishers process and print disc films, and for training Kodak personnel and customers. He also held positions as district sales manager, training coordinator, instructor and technical sales representative during his tenure at Kodak.

Rice replaces Ellsworth (Mac) McCune, who retired from the position this spring.

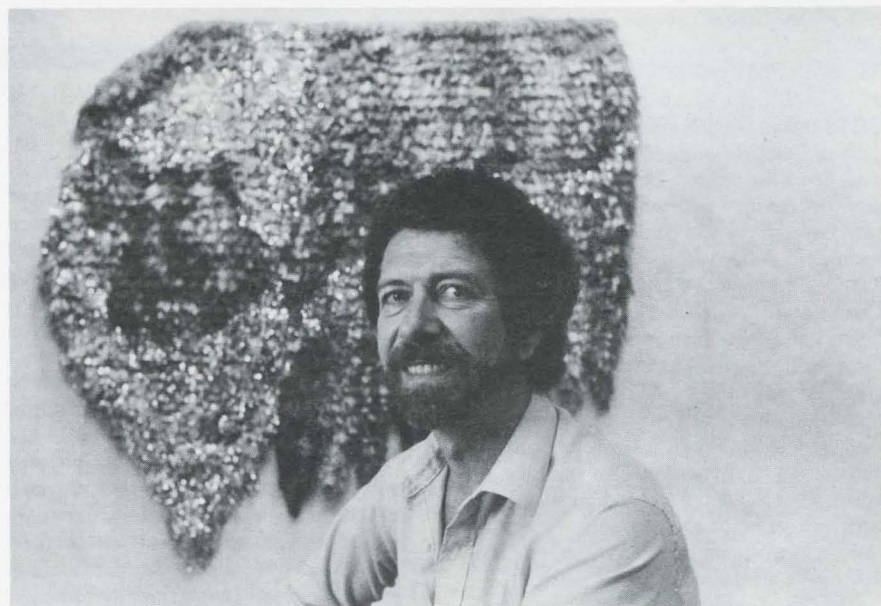
The James E. McGhee Professorship was established in 1967 by the U.S. photographic processing and marketing industry in anticipation of its own future needs for highly trained personnel. The chair honors the late James E. McGhee, who was long acknowledged as an innovating force in the field of photography during his 45-year association with Eastman Kodak Company.

Co-op and Placement Office Gets New Name

There's a new name on the door at the north end of the George Eastman Memorial Building. It says, "Office of Cooperative Education and Placement" and more accurately reflects the purpose of that office, says James G. Miller, associate vice president, Institutional Advancement.

According to Miller, "The name was changed from the Center for Cooperative Education and Career Services—with input from the center staff, the administrative committee and others—to more clearly identify the role of the center for people at RIT and for employers and other off-campus groups."

The Office of Cooperative Education and Placement is under the direction of Beverly Cudney.



VIP COMMISSION...Fabric artist Max Lenderman, College of Fine and Applied Arts, is shown with "Escarpment," a tapestry created for the private office of John S. Kobacker, president of The Kobacker Co. in Columbus, Ohio. Woven on a linen warp, the tapestry utilizes handspun Greek wool, rayon and mylar in a process interlocking weft tapestry with 15,000 rya knots. Depicting nature scenes of both New York and California, the tapestry's hand-dyed yarns in rusts, pinks, melon and orange are complemented by copper and gold mylar threads.

Registration Under Way For Part-time Programs

Those interested in registering in any of the 400 continuing education courses offered by RIT this fall may do so from 9 a.m. to 8:30 p.m., Monday through Thursday, and from 9 a.m. to 3 p.m., Fridays, now through August 30 at the registrar's office in the George Eastman Memorial Building.

Open registration will take place in the main gym Wednesday, Sept. 4.

Day student registration is 9 a.m. until 8:30 p.m., Monday, Sept. 9, on the first floor of the George Eastman Memorial Building. First day of classes is Monday, Sept. 9.

Physics Professor to Spend Fall And Winter Quarters in England

Being a visiting faculty member at one institution in England isn't enough for Dr. F. Kingsley Elder, who has been awarded concurrent appointments by two institutions in central England for the 1985-86 academic year.

Elder, a physics professor in the College of Science, will be overseas for the Fall and Winter quarters to pursue an intensive study of the British curriculum and teaching methods followed in the bachelor's degree programs in pure and applied physics.

He will be Honorary Visiting Lecturer in Physics in the Department of Mathematics and Physics at the University of Aston, a technological university in Birmingham, and a Visiting Research Fellow in the Department of Applied Physical Sciences at Lanchester Polytechnic in Coventry. Of particular interest to Elder will be the "sandwich courses" of the two institutions, which have much in common with RIT's cooperative work-study program. In the British applied physics curriculum a full year of industrial or similar work is "sandwiched in" between the second and third academic years of the curriculum.

Since the two institutions are only 20 miles apart, Elder also will be able to take on limited teaching responsibilities at each. Their central location will allow him to make brief visits to Scotland and other areas of England to become acquainted with other types of colleges and universities.

Elder has served for many years as chairman of the College of Science and Department of Physics curriculum committees. He also has been the college's representative on the Inter-College Curriculum Committee.

Laurel Scholarships Awarded to Students

Three outstanding students in the School of Printing were awarded the 1985 Laurel Printing Inc. scholarships. This is the third year the scholarships have been awarded. The scholarships are given on the basis of academic achievement and based on superior contributions to printing.

Norman S. Bernstein, a third-year printing student, and Kenneth Marks, a second-year student, each received \$900. Jeffrey Sorensen, a second-year printing student, received \$1,200.

"This kind of scholarship is an excellent incentive to our students," said Dr. Mark F. Guldin, dean of the College of Graphic Arts and Photography. "It is a once in a lifetime chance for students to be recognized by an outside organization. They are all exceptional students, and well deserving of this award."

Laurel Printing Inc. is located in Elmsford, N.Y., 25 miles north of New York City. A quality commercial printing plant, Laurel counts among its clients the Metropolitan Museum of Art, Tiffanys, General Foods, IBM, the Smithsonian Institution and Reader's Digest.



FACULTY COUNCIL OFFICERS... Newly elected Faculty Council officers for 1985-86 greeted one another before a luncheon meeting with President M. Richard Rose. From left is treasurer, Victoria Robinson, NTID; chairperson, Charles Haines, College of Engineering; operations officer, Paul Ferber, College of Liberal Arts; and vice chairperson, Laura Cann, Counseling Center. James Hammerton, College of Applied Science and Technology, was elected communication officer.

Important Dates For Fall Quarter

August 19	Class Schedules mailed to new and returning students who participated in the pre-registration process
September 5	Day College Open Registration—New Students
September 6	Day College Open Registration—Returning Students

Undergraduate Students

Undergraduate students register according to the first letter of their last name.

LETTER	TIME	LETTER	TIME	LETTER	TIME
A,B	11:00 am	H,I	9:00 am	P	2:00 pm
C	10:30 am	J,K,L	8:30 am	Q,R	2:30 pm
D,E	10:00 am	M	1:00 pm	S,T	3:00 pm
F,G	9:30 am	N,O	1:30 pm	U,V,	3:30 pm
				W,X,	
				Y,Z	

Graduate Students

Graduate students may register September 5 from 8:30-11:30 a.m., 1-4 p.m., or 5-7 p.m., or September 6, 8:30-11:30 a.m. or 1-4 p.m.

Important Dates for Fall Quarter

September 7	Saturday Classes Begin
September 9	Day and Evening Classes Begin
September 9	Day College Registration for Non-Matriculated Students
September 9	Late Registration (\$25 late fee effective)
Sept. 16*	LAST DAY TO ADD OR DROP A COURSE
September 16	Last Day to Change From Credit to Audit or Audit to Credit

*Please note that the new six-day Drop/Add period begins with the first day of classes and is effective Fall Quarter 1985-86.

New Center Focuses On Office Automation



Maria C. Duell

Training people to fully recognize and use the capabilities of their office automation systems is the express focus of the College of Continuing Education's newly equipped and manned Computer Applications Training Center. The center opens Sept. 16, and an open house is planned for Oct. 18.

Dr. Charles Layne, director of training in CCE, says, "The training center is comprehensive. We're providing business and industry with one-stop shopping for computer training. That means every kind of training, everything from the basics of computer literacy through the use of common software, word processing and data management to the use of technical software—the use of computer-aided design, computer-aided manufacturing and computer-aided engineering. We will ultimately provide a training program for the computer-based part of electronic publishing."

The center, located on the fifth floor of RIT's City Center campus, houses 14 IBM-PC-AT (enhanced) models, 10 DEC Rainbows, 10 Apple IIs and the availability of both basic and sophisticated CAD-CAM equipment. Maria C. Duell, president of Duell Training and Development, will direct the center. Her company has developed office automation and trained personnel in the use of many dedicated and micro systems for such clients as Xerox, Tad Services, the City School Center and the Urban League.

On line are workshops, seminars and the capabilities for custom on-site training. "To make the workshops effective for each individual involved," Duell says, "we are arranging evaluation sessions both before and after training. We want to know what skills the individual has and which skills he or she may lack. When the session is over, we want to reevaluate and make sure all the skills are in place."

"We're providing a 'hot line' for use should the individual run into a problem back on the job, and we will be checking at specific times to see if additional skills are needed. Our goal is to develop fully both the user's and the system's potential."

"We also will go into a company and plan and design automation and the training to go with it."

Most one-day workshops will provide reference manuals and two take-home discs, a program disc and a personal data disc. A continental breakfast and lunch are provided. Automated office seminars, Saturdays from 10 to 1 p.m., are planned to improve the technical and interpersonal abilities needed in the modern automated office. Free evaluations will be given to assess individual skill levels and the training needed.

Dr. Layne asks RIT faculty and staff, who have training expertise in computer applications and are interested in participating, to contact him at 262-2709. "If any academic department needs access to computer facilities, we will be glad to reserve the facilities for them. We would like the rest of the campus to participate with us."

Workshops in basic and advanced Multimate word processing, Displaywrite word processing, Word Perfect, Lotus, Symphony, and d base, will be given September through November. Free literacy workshops, an introduction to the IBM/PC, will be given Sept. 16, 21, and 27 to those registering for the one-day workshops. One-day courses in hard disc management are planned for Oct. 7, 21, and Nov. 11., and a one-day course in the effective use of a personal computer is set for Sept. 16.

For more information, call Maria Duell, 262-6271; for registration, call Diane Reed, 475-2141.

Teach Them to Swim While They're Young

Registration is now open for children's swim lessons in the Department of Physical Education, Intramurals and Recreation. Classes begin Sept. 14 in the Edith Woodward Memorial Pool at a cost of \$30. Half-hour lessons for children two years and older are conducted one-on-one between the hours of 10 a.m. and 1 p.m. Registration and fee must be paid in advance at the Physical Education office. A valid RIT ID card is required at time of registration.

Swim lessons for faculty and staff are being offered this fall at a fee of \$10. Classes will be held from 4:30 to 5:30 p.m., Sept. 17-19 and Sept. 24-26, in the Edith Woodward Memorial Pool. For further details contact the Physical Education office at 2620.

RIT's Recruiter Spells Name R-i-t



Rit Fuller

Rit Fuller has been appointed director of Admissions at RIT. The appointment, effective August 12, was made by James G. Miller, associate vice president, Institutional Advancement.

According to Miller, "Fuller has played a pivotal role in moving the Institute's recruitment efforts forward and improving the effectiveness of Admissions operations."

"His insight into the admissions process, specifically the successful admissions program that has been developed, coupled with his commitment and dedication to the advancement of RIT, make his appointment a special pleasure for me," said Miller. Fuller has been associate director of Admissions for the last three years.

He replaces David Finney, who left the Institute to assume a similar post in admissions at New York University.

Christened Richard, Fuller says his mother never liked any of the nicknames associated with Richard and began calling him Rit from the time he was two. "Every time RIT appeared in a newspaper headline when I was older, my mother sent me a clipping, so I was very familiar with the place before I ever came here," he says.

A graduate of Ithaca College, Fuller completed his graduate work at Bowling Green University and came to RIT as an admissions counselor in 1978.

(continued on page 3)

Workguide Cites Institute Efforts

Workguide, a health association program that provides transitional employment for persons who have been psychiatric patients and those with learning disabilities, honored nine RIT staff members for their roles in the vocational rehabilitation program.

Recognized at a June luncheon for "providing sensitive, caring and supportive supervision enabling participants to become reacquainted with the world of work" were James Papero, associate director of Personnel; James Murphy and John McCormick, Accounting; Valerie Liotta, Payroll; Arthur D'Angelo, Mail Services; Gladys Taylor, archivist, Wallace Memorial Library; and Cheryl Herdklotz, Scott Sevensma and Claudia Stata, all of Instructional Media Services.

Papero, also Institute affirmative action officer and instrumental in initiating the

readjustment programs at RIT, said this is the seventh year RIT has participated in Workguide, formerly Work and Social Adjustment. "But Workguide," he adds, "is only one of several programs that RIT has initiated with social agencies over the years. We provide a summer training program for learning disabled students from the Board of Cooperative Education Services in Fairport. We work with the Association of Retarded Citizens, the Al Sigl Center and other Health Association programs such as the Mental Health Chapter and National Council on Alcoholism.

"RIT benefits as well as the persons working toward readjustment," Papero says. "We get needed employees, and they get an opportunity to work. We get the satisfaction of restoring individuals through work. We've had great success in

matching clients from agencies with sensitive managers. RIT is known in the community as an institution that cares."

That sense of caring has prevailed at the Institute for many years. In 1975, Papero developed and continues to coordinate RIT's Employee Assistance Program (EAP), which serves to rehabilitate employees whose lives are troubled because of alcoholism, drug abuse, emotional, financial or marital problems. RIT was the second college in the nation to start such a program.

Papero points out that "EAP helps employees, restores them to full productivity and reduces RIT's employment costs."

Institute efforts on behalf of clients of community agencies needing training and employment and of its own employees resulted in national recognition. In 1981, RIT received the Employer of the Year Award from the National Mental Health Association and, in 1980, RIT was the first institution to receive the Employer of the Year Award from the President's Committee on the Employment of the Handicapped.

Graduate Co-op Program Approved For Quality/Statistics Center

Continuing its emphasis on easing the shortage of applied statisticians in the manufacturing world, the Center for Quality and Applied Statistics in the College of Continuing Education has initiated a co-op program at the graduate level in applied and mathematical statistics. The program was approved by the New York State Board of Education in April.

According to Dr. John D. Hromi, director of the center, the cooperative education approach to training master's level statisticians is directed toward filling the need for well-grounded applied statisticians who have an appreciation of the problems and opportunities for the application of quality control, engineering and market research in industry.

"We will work closely with participating companies to ensure a high degree of relevancy in the educational experience," Hromi states. "Our graduates should become the company's in-house experts to whom those with less training may turn for assistance.

"We hope the development of the cooperative program will lead to even stronger ties between the Center for Quality and Applied Statistics and industry, business and government."

Participating organizations may sponsor an employee or a student.

Admission to the program is granted to holders of a baccalaureate degree who have acceptable mathematics credits. Co-op students will attend RIT full time in alternate quarters.

RIT's Merritt Puts His 'Pots in Space'

What's a potter doing in a planetarium?

Elemental, my dear Watson, elemental. Stephen Merritt, ceramist in the College of Continuing Education, says carbon-based molecules under tremendous heat and pressure were the elements that formed the heavens and life itself and that the same elements are present in pottery. Therefore a pot is a microcosm of a celestial body, and it's not at all strange that a show of Merritt's vessels, "Pots in Space," will be at the Strasenburgh Planetarium through Sept. 3.

The large, open saucers and thin-stemmed containers, hovering over their own bases, are aptly named "Orb," "Deep Space," "Space Warp," "Celestial Maze," and "Luna." Their space motif works. Merritt says, "These vessels are meant to function...to carry the imagination into space."

"Pots in Space" is open to the public from 10 a.m. to 4:30 p.m., Monday through Friday, and noon to 4:30 p.m., Saturday and Sunday. There is no admission fee.

Science Honors Chemistry Scholars with Awards

Dr. Terence Morrill, head of the Department of Chemistry in the College of Science, has announced the recipients of the 1985 Outstanding Chemistry Student awards:

Traci Hopkins, the Freshman Chemistry Achievement Award, sponsored by Chemical Rubber Company Press; Yvonne Selbig, the Undergraduate Analytical Chemistry Award, sponsored by the Analytical Chemistry Division of the American Chemical Society; Scott Coapman and Laurie Feurer, the Undergraduate Organic Chemistry Award, sponsored by Merck & Co. Inc.; Judith Bose, the Outstanding Senior Chemistry Student, sponsored by the American Institute of Chemists; and Boris Chrnyk, the Outstanding Teaching Assistant Award, sponsored by the College of Science.



RIT HONORS R. T. FRENCH COMPANY...President M. Richard Rose, center, recently unveiled a plaque honoring the R. T. French Company for its continued support of the School of Food, Hotel and Tourism Management in the College of Applied Science and Technology. The plaque is mounted in the school's lobby on the fourth floor of the George Eastman Memorial Building. On right is Donald Hewitt, president of R. T. French Company, and on left, George Alley, director of the school.

Photo Names Spaul, Root As Chairmen

Assistant Professor Malcolm Spaul has been named chairman of the Film and Television Department and Associate Professor Nile Root has been named chairman of the Biomedical Photographic Communications Department, both in the School of Photographic Arts and Sciences.

Spaul, who holds a master of fine arts degree from RIT in motion picture and video production, joined the faculty in 1979. He is widely known for his work as a documentarian and animator and has received numerous awards for his work as a filmmaker.

His film *The Walnut and the Carpenter*, based on Lewis Carroll's poem, has won a national student Academy Award, a Cine Eagle award and a gold plaque from the Chicago International Film Festival. Many of his films have been seen at film festivals around the world. Spaul replaces Martin Rennalls, who retired this spring.

Root has been coordinator for 11 years of the biomedical photographic communications program, upgraded to department status this summer. He has received numerous awards for his scientific photographs, including 28 in international competitions. He holds a master's degree in instructional technology from RIT. A fellow of the Biological Photographic Association (BPA), he is a past member of the BPA Board of Governors. His biography was recently included in *Who's Who in the World*.

LDC Program Offers SAT Review

Courses designed to familiarize high school juniors and seniors with the Scholastic Aptitude Tests (SAT) will be offered this fall on Saturdays by RIT's Learning Development Center, starting Sept. 12.

The courses are designed to help students do well on both the practice SAT (PSAT) and SAT examinations. A math section course will review the algebra and geometry concepts needed to solve the

math problems, and a verbal section course helps develop reading comprehension and rate, word knowledge and the ability to solve analogies.

The courses will be offered on Saturdays, Sept. 14, 21 and 28, and Oct. 5 and 12. Cost is \$90 for each course.

For more information, call Barbara Young, Learning Development Center, 6682, between 8:30 a.m. and 4:30 p.m., Monday to Friday.

RIT Hall of Famer Sherman Hagberg Dies



Sherman B. Hagberg

Sherman B. Hagberg, former department chairman in the Mechanical Department and the Institute's first director of Athletics, passed away August 10 after a lengthy illness.

A native of Ackley, Penn., Hagberg came to the Institute in 1919 as an instructor in the Mechanical Department. In 1931 he assumed the dual role of professor and director of Athletics, positions he held until 1959. He retired in 1961.

Hagberg graduated from the University of Rochester in 1921 and later received master's degrees in engineering from both U of R and RIT.

In 1969 Hagberg, along with Mark Ellingson, Harold Brodie and A. Leo Fox became the first inductees into the RIT Sports Hall of Fame. Hagberg was instrumental in starting the Institute's wrestling program, guided during the early years by Ellingson who later became Institute president. Brodie also taught at the Institute and served as basketball faculty manager for 50 years. Fox coached bas-

ketball in the 1950s, including a perfect 17-0 season in 1955-56.

President Emeritus Ellingson says, "Sherman Hagberg devoted his entire life to RIT. He was not only its first director of Athletics, he was active in the promotion of all athletic affairs at RIT. He made a great contribution, and his memorial will be in what he did for RIT and its students through its athletic programs."

Hagberg and his wife of 61 years, Mary Perkins, resided in East Rochester where he spent his leisure time in gardening, landscaping and swimming.

Contributions in his memory may be made to the First Presbyterian Church or the Volunteer Ambulance Corps. in East Rochester.

R-i-t Fuller

(continued from page 2)

In the course of carrying out his recruitment and admissions responsibilities, he has worked directly with many of the Institute's colleges. During the past year he coordinated the Admissions staff's transfer recruitment efforts and in that capacity worked with many faculty and staff who are involved with and instrumental in the recruitment of transfer students.

"This is a great opportunity for me to direct a successful admissions program with an excellent staff, one that constantly strives to maintain our history of success," says Fuller. "It is exciting to be able to represent an institution with high-quality programs responsive to the needs of present and future students.

NEWSMAKERS

● **Lin McQuade-Johnson**, new manager of the Ritskeller, was one of three persons in a seven-state region chosen to attend The Leadership Institute organized by the National Association of College and University Food Services (NACUFS).

● **Jennifer Singer**, senior communications coordinator, Communications, has been elected to the board of directors of the Shipping Dock Theater.

● Two faculty members in the School of Photographic Arts and Sciences were honored by the Photographic Society of America at its international convention in Seattle this month. **Dr. Leslie Stroebel**, chairman of the Technical Photography Department, and **Andrew Davidhazy**, associate professor, were named associates of the society, an honor reserved for those who have made outstanding contributions to PSA. Only 600 of the 14,000 members of the society have been named associates. During the convention, Davidhazy gave a presentation on infrared and ultraviolet photography.

Andrew Davidhazy is co-author of a major article on polarizing filters in the July issue of *Modern Photography* magazine. A novel camera design by Davidhazy was described in the April issue of *Imaging Technology* magazine, the official publication of the Society of Photographic Scientists and Engineers.

● **Dr. Edward G. Schilling**, chairman of graduate statistics in the Center for Quality and Applied Statistics, CCE, presented a paper, "The Development of New ANSI/ASQC Sampling Schemes," at the 1985 American Statistical Association annual meeting in Las Vegas. **Richard Freund**, curricula and contract planning consultant for the Center for Quality and Applied Statistics, presented a paper, "Review of ISO/TC 69 Standardization Activities," at the same meeting. Dr. Schilling's paper, "New ANSI Versions of MIL-STD-414 and MIL-STD-105D," was published in ASQC Quality Congress Transactions and in the *Naval Research Logistics Quarterly*.

● **William Frizelle**, associate director, School of Engineering Technology, **Harriet Friedstein**, associate director in the College of Continuing Education, and **Dr. Edward Stockham**, associate director, School of Food, Hotel and Tourism Management, attended the Northeast Regional Meeting of the American Chemical Society and participated in a symposium on the "Chemistry of Everyday."

● **Dr. Richard L. Harris**, associate professor, College of Continuing Education, has been elected president of the Rochester branch of The English-Speaking Union for the 1985-87 term. The Rochester branch has 277 members who are either born in England, married to Englishmen, have ancestral ties to England or have an intense interest in English culture.

● **Mary Dean Brewer**, a development officer for the College of Applied Science and Technology, has been appointed to the editorial board of the *Journal of Cooperative Education*. Her most recent contribution to the board included a book review of "A Vision of the Future" by Mortimer J. Adler in the Spring 1985 issue.

● **Michael Lutz**, chairman of undergraduate studies, School of Computer Science and Technology, College of Applied Science and Technology, has reviewed "The UNIX Programming Environment" by Brian Kernighan and Rob Pike for publication in the book review column of a recent issue of *IEEE Software*.

● **Kevin Foley**, chairman of the Civil Engineering Technology Department in the School of Engineering Technology, has been elected to the board of directors of the Empire State Chapter of Associated Builders & Contractors, Inc. He will serve as secretary-treasurer for the chapter. Foley has also been appointed to the Upstate New York Construction Users Council, a part of the national business roundtable.

● **Robert and Diane Mowers**, music teachers in the Performing Arts Department at NTID, were the featured speakers at the 4th International Symposium of Music Rehabilitation and

Human Well-Being. The symposium, a worldwide gathering of medical doctors, therapists, and music educators seeking improved techniques for education of the handicapped, was held in New York City at Goldwater Memorial Hospital.

● **Don Beil's** latest book, *Symphony First* (Reston/Prentice Hall), was among the 10 best selling computer books during the early summer, according to a recent article in *USA Today*. Beil is associate professor in NTID's Data Processing Department.

● **Dr. Stephen T. Riley**, associate professor of economics, College of Liberal Arts, conducted an Economic Education Workshop for high school teachers in the Monroe County area during July.

● **Dr. Edward A. Maruggi**, associate professor in the School of Science and Engineering Careers at NTID, presented a workshop entitled "Time Management: Work Smarter, Not Harder" at the 93rd Annual Conference of the American Society for Engineering Education at Georgia Institute of Technology in Atlanta.

● **Drs. Charles Layne and Joanne Subtelny**, faculty members of the Educational Specialist Program conducted by NTID and the University of Rochester's Graduate School of Education and Human Development (GSEHD), were honored at the GSEHD's diploma ceremony in May. They were recognized for their significant contributions as faculty of the program since its inception in 1980. Layne is director of business and arts, CCE, and Subtelny is a senior research associate in the Department of Communication Research at NTID and an adjunct professor at the Eastman Dental Center and Nazareth College.

● **Dr. Bruce A. Austin**, associate professor in the College of Liberal Arts, presented his paper, "Cinema Screen Advertising: An Old Technology with New Promise for Consumer Marketing," at the Association for Education in Journalism and Mass Communication conference, Advertising Division, in Memphis. A revised version of the paper will be published in the *Journal of Consumer Marketing*.

Food Service Resumes Regular Hours in Sept.

The College-Alumni Union Cafeteria will reopen on Monday, August 26, from 7:00 a.m. until 4 p.m.

The Ritskeller will remain open through Friday, August 23.

The College Union Food Service facilities will be closed Labor Day weekend.

All College Union Food Service facilities will resume regular serving hours for fall quarter as follows: Cafeteria reopens Monday, August 26; Ritskeller reopens Saturday, September 7; Clark Dining Room reopens Monday, September 9.

News & Events Returns To Biweekly Schedule

Summer is over and that means News & Events will return to its regular schedule, beginning Sept. 12, publishing every two weeks. Material submitted for News & Events should be sent to the Communications Department, the Thursday before publication.

Staff Sign Seminars Slated

The Communication Training Department at NTID will offer the following courses in sign/simultaneous communication for faculty and staff and intern instruction during fall quarter. Registration will end August 30, and you are encouraged to register as early as possible. Registrations are accepted on a first-come, first-served basis, and each class has a limited enrollment. Registrants will be notified during the first week of September regarding confirmation of enrollment.

All regular courses will run from Sept. 9-Nov. 1. Locations will be announced. Evaluation week is Nov. 4-8.

Basic Sign Communication I
12-1 M,T,W,TH,F
3-4:30 M,T,W,TH

Basic Sign Communication II
12-1 M,T,W,TH,F
3-4:30 M,T,W,TH

Basic Sign Communication III
12-1 M,T,W,TH,F
3-4:30 M,T,W,TH

Basic Simultaneous Communication
11-12 M,W,TH,F
2-3 M,W,TH,F

Intermediate I
8:30-10 M,W
12-1 M,W,F
1-2 M,W,TH

Intermediate II
8:30-10 T,TH
1-2 M,W,TH

Intermediate III
11-12 M,W,TH
1-2 M,W,TH

American Sign Language I
8:30-10 T,TH

American Sign Language II
8:30-10 M,W

Seminars

These seminars are intended to provide concentrated practice in specifically focused areas of sign skill development. They have been identified by faculty and staff as particularly important. Due to the nature of these topics and the short duration of the instruction, enrollment will be limited, and daily attendance will be required. Please register early. **Please note that the dates for the seminar courses vary.**

Effective Fingerspelling
Sept. 16-27 M,T,W,TH,F 12-1
Sept. 9-Oct. 11 M,W 12-1

Center for Quality Receives Grants

The Center for Quality and Applied Statistics in the College of Continuing Education has received a \$5,000 grant from the Ellis R. Ott Foundation and \$1,000 from the Midwest Conference Board of the American Society for Quality Control for the Mason E. Wescott Laboratory.

The grant from the Ellis R. Ott Foundation has been used for the purchase of instructional video tape equipment and an IBM personal computer system. Dr. John D. Hromi, director of the center, says the equipment purchased through the gifts "will help our students become proficient in the application of computer hardware and software to quality-related problems and to problems in need of statistical solutions."

Practicing Appropriate Sign Choice
Sept. 30-Oct. 11 M,T,W,TH,F 12-1
Oct. 14-Nov. 15 M,W 12-1

Class registrations and questions regarding classes should be directed to Karin Blood, LBJ Building, room 3139; phone 6497.

Hopkins to Direct NTID Career Division

Karen Ann Hopkins has been named director of the Division of Career Opportunities at NTID. She will be responsible for NTID admissions and placement activities and will direct the work done by the Division of Career Outreach and Admissions and the National Center on Employment of the Deaf.

A member of the NTID staff since 1979, Hopkins was manager of the Training and Media Services Department.

N·E·W·S & E·V·E·N·T·S

Non-Profit Org.
U.S. Postage
PAID
Permit 626
Rochester, N.Y.

Rochester Institute of Technology

One Lomb Memorial Drive
Post Office Box 9887
Rochester, NY 14623-0887



J WILSON

JOY
LIBRARY