

Historic, Archive Document

Do not assume content reflects current scientific knowledge, policies, or practices.



Catalogue 1911
OF PLANTS, VINES
AND TREES
FOR SALE BY

GREEN'S NURSERY CO.
ROCHESTER, N. Y.

CAPITAL OVER \$100,000.00
ESTABLISHED 32 YEARS.

"GREEN'S TREES GROW"



INDIANS CANOEING GREEN'S TREES TO HUDSON BAY. GREEN'S TREES, TRUE TO NAME, HAVE GONE INTO THE MOST REMOTE, AS WELL AS THE MOST POPULOUS, SECTIONS. GREEN'S TREES STARTED ORCHARD BOOMS IN PECOS VALLEY TEXAS; AND HOOD RIVER, OREGON AND ELSEWHERE.

THIS IS OUR ONLY SALESMAN

In presenting this edition of our catalog we wish to extend thanks for past patronage and to assure our customers prompt and careful attention to all inquiries and orders they may favor us with.

THE CASH WITH ORDER WAY

Why Pay Agents Commissions.

Why Pay Other People's Bad Debts.

You get trees so much cheaper from us because our way of dealing direct with the planter, and saving middlemen's expenses and commissions enables us to sell quality trees at almost half the price that tree agents ask.

HOW TO ORDER.—Please make out your order on detachable order sheet in back of catalog. **Send payment with order.** Procure a Money Order at your post-office or express office, or a draft at the nearest bank or send cash in a registered letter. **Mail all to us in the enclosed self addressed envelope.** Follow directions "HOW TO ORDER" on order sheet as closely as possible and make directions very plain as this will prevent any mistakes occurring. If directions are omitted we will forward according to our own judgment. Small orders will go cheaper by express, large orders by freight. **Always state sizes desired.**

ORDER EARLY, as our orders are shipped in the rotation they are received—**First come first served.** We cannot delay orders received first for orders coming later requiring immediate attention. If for any special reason it is necessary that an order be shipped on a specified date make a note on the order and we will comply with the request if possible. Our regular shipping season opens in the Spring about March 15th and in the Fall about October 1st.

PACKING.—We do not charge for packing, boxing or delivering to freight or express companies at Rochester. We do not prepay any charges, unless goods are to be delivered to a prepaid station, as all our prices and quotations are **Free On Board cars at our nurseries.** If you have no agent at your station and shipment **has to be prepaid** notify us and we will prepay and bill charges to you after shipment.

OUR TREES are Clean, Healthy, Hardy, and Thrifty. Finest grown. It is an established fact that in no other part of the country do fruit trees attain the perfection of those grown in Rochester and vicinity. Not one nurseryman in a thousand buds or grafts his own trees as we do. Our trees are grown and cared for by men who have been in our employ from 25 to 30 years. They know how and do turn out the finest fruit trees possible. Our stock is all first class of the different sizes as specified. We do not handle any second class trees. **All poor trees or culls go into the brush heap.**

There never has been any San Jose Scale found in or near our nurseries. Our trees are inspected by state authorities every year and an official certificate of their freedom from diseases accompanies each shipment.

OUR GUARANTEE.—We guarantee our stock **TRUE TO NAME.** While we exercise the greatest care to have our stock genuine and reliable, we agree to replace, on proper proof all that may prove untrue to name as labeled, and it is hereby mutually agreed that our replacing it or offer to replace shall operate as a liquidation of all damages.

OUR RESPONSIBILITY.—See any commercial agency, banker or postmaster at Rochester. Our trees are sold by pleased customers recommending us to their friends. We cannot afford to give unsatisfactory service to our patrons. **IF WE PLEASE YOU TELL YOUR FRIENDS. IF NOT TELL US.**

RATES.—Less than ten of a variety always at single rates.

Over ten and less than 30 of the same variety at 10 rates. 10 rate will not be given on a lot of 10 or more composed of several varieties. The 10 must all be of the same variety.

Over 30 and less than 300 of the same variety at 100 rates. 100 rate will not be given on a lot of 30 or more composed of several varieties. The 30 must all be of the same variety.

Over 300 of the same variety at 1,000 rates. 1,000 rate will not be given on a lot of 300 or more composed of several varieties. The 300 must all be of the same variety. Where no 1,000 rate is given the 100 rate always governs.

EXAMPLE.—In an order of 5 Baldwin, 8 Northern Spy, 9 Ben Davis, 10 Fameuse, 20 Early Harvest, 40 Fall Pippin apples, 200 Cuthbert, 200 Kansas Raspberry, and 400 Eldorado Blackberry, the 400 Eldorado would go at 1,000 rates, the 200 Cuthbert, the 200 Kansas and the 40 Fall Pippin would go at 100 rates, the 20 Early Harvest and 10 Fameuse would go at 10 rates and the 9 Ben Davis, 8 Northern Spy and 5 Baldwin would go at single rates.

COLLECTIONS.—We cannot make any changes in our collections for they are selected and bundled before our busy shipping season and the valuable time saved by doing this makes it possible for us to offer these collections at such a reduced price.

IF WE PLEASE YOU TELL YOUR FRIENDS. IF NOT TELL US

Why Can Green's Nursery Co. Sell Plants, Vines and Trees for Less Than Half the Price That Tree Agents Get?

A DIRECT ANSWER TO THIS QUESTION.

We sell high grade quality trees etc., at less than half the price asked by tree agents. This is a fact. Why we are able to do so is as follows: We deal directly with the planter. There are no middlemen to take their profits and expenses and make you pay for them. Selling trees through agents who canvas every township is expensive. Green's way avoids all of this expense. Green pays no salaries to tree agents. Green's catalog takes place of the tree agent. We place our catalog before you and you select what you want and send in the order and we do the rest.

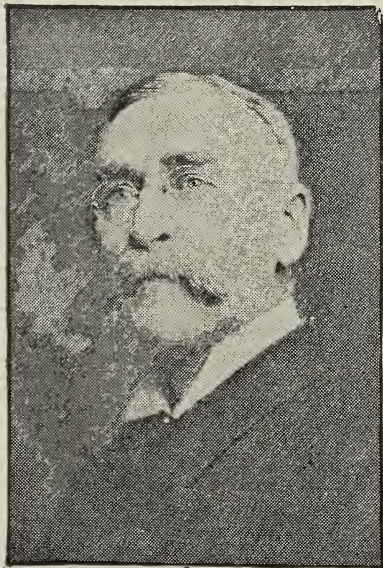
You save at least half your money by *buying in Green's way*. We have the largest business of this kind, a mail order business, in the world. We have 30 years experience, and a reputation secured by 30 years of square dealing with our patrons, who may be found in every region and township over this broad country.

We invite you to come to Rochester and look over our trees and notice their high quality. Our trees are better this year than ordinarily for we have had one of the best growing seasons ever known, with frequent showers.

While you save half your money in buying direct of us that is not the principal advantage in buying Green's Rochester trees. The great advantage is in securing high quality trees that are true to name. Another reason why we can sell high grade trees for almost wholesale prices is that we have no bad debts. Our patrons pay for what they buy. You do not have to make up for the bad debts of others when you deal with us.

If you see trees offered at a lower price than ours, rest assured that those are fake trees, such as you would not buy if you saw them before ordering.

BIRTH OF THE MAIL ORDER NURSERY



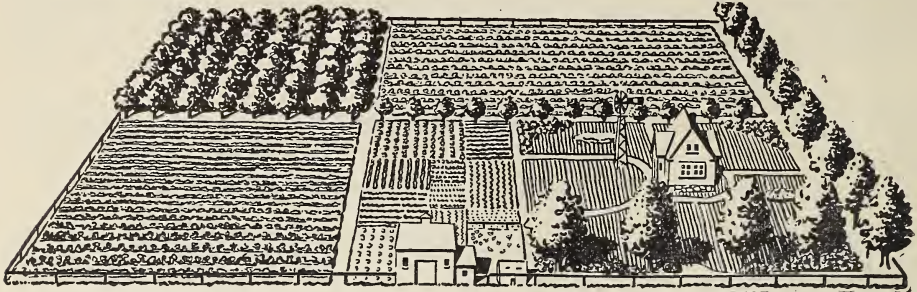
CHAS. A. GREEN
President and Founder

Over 30 years ago C. A. Green, the pioneer of the mail order nursery business, realized that the man who could get the highest quality trees into the people's hands at the most reasonable prices would be the most successful. He saw that the only way to do this was to grow his own trees and sell through a catalog direct to the planter, on a cash with order basis and save all agent's expenses and bad debts.

To establish a business of this kind it was necessary to gain the absolute confidence of the general public and this could be done only by satisfying every customer or giving, "fair play and half the road," and sometimes more than "half the road." But this rule has always been strictly adhered to, as it is this more than any thing else that made it possible for C. A. Green to establish "the largest mail order nursery in the world." Absolute responsibility and honesty, highest quality trees, most reasonable prices, trees true to name, satisfaction to customers, are the corner stones of our business.

We are the largest and oldest retail "mail order nursery" in the country, have a capital of over \$100,000.00, are rated among the highest by all mercantile agencies; grow the highest quality trees, absolutely true to name, budded or grafted from bearing orchards of our own. Sell at the most reasonable prices by dealing direct with the planter at the least expense. Give satisfaction to all customers. We realize that our satisfied customers are our best advertisement.

C. A. Green's Plan for Laying Out a 10 Acre Fruit Farm



A GOOD REPUTATION

This is what Charles A. Green has been working for the past thirty years. When he started this business he found difficulty in selling his trees but as soon as people found that his trees were TRUE TO NAME he could hardly grow enough to supply the demand. We are compelled each year to increase our capacity, our force of laborers and packers to keep pace with our increasing business. "We have heard from our friends that you are reliable and a firm dealing fair and we want your trees" write many people. "We want your trees, plants and vines because they prove TRUE TO NAME when fruiting."



CHAS. A. GREEN recommends the following list of apples for planting in different States named below. Other varieties succeed there, but those named are the leaders:

For New England, New York, Pennsylvania, New Jersey, Indiana and Michigan.

- | | |
|-----------------|-----------------|
| American Blush | Jonathan, |
| Banana, | King, |
| Bismarck, | Lord Nelson, |
| Baldwin, | Northern Spy, |
| Ben Davis, | Red Astrachan, |
| Dutchess, | R. I. Greening, |
| Fanny, Fameuse, | Sutton Beauty, |
| Grimes Golden, | Wagner, |
| Gravenstein, | Wealthy. |

For Illinois, Wisconsin, Missouri, Kansas, Minnesota, Iowa and Nebraska, all hardy:

- | | |
|--------------------|---------------------|
| American Blush, | N. W. Greening, |
| Ben Davis, | Rome Beauty, |
| Dutchess, Fameuse, | Shiawassee Beauty, |
| Hubbardston, | Stark, |
| Jonathan, | Willow Twig, |
| Maiden's Blush, | Yellow Transparent, |
| McIntosh, | York Imperial. |

For Delaware, Maryland, Virginia, West Virginia, Kentucky and Tennessee.

- | | |
|--------------|---------------------|
| Ben Davis, | Northern Spy, |
| Dutchess, | Stark, Wealthy, |
| Gravenstein, | Yellow Transparent, |
| Jonathan, | York Imperial. |

For North and South Dakota, Wyoming and Montana, all hardy:

- | | |
|-----------------|---------------------|
| Dutchess, | Pewaukee, |
| Fameuse, | Wealthy, |
| N. W. Greening, | Yellow Transparent. |

A MISTAKEN IDEA. Some prospective buyers of trees have an idea that nothing but the largest size trees are fit to plant, that all other sizes are poor trees. Small trees are not third-class, but first-class of their size, and while we do not recommend the small planter, or one who plants a few trees, to select the small size for his planting, we do recommend the medium and small sizes to the orchardist.

WHAT A BANKER SAYS ABOUT US

CAPITAL AND SURPLUS \$1,000,000

The Traders National Bank
Rochester, N. Y.

November 19, 1907-

To whom it may concern:
I take great pleasure in saying that I consider Green's Nursery Company entirely reliable, a house of many years' standing, and with undoubted business integrity and honesty.
I believe in any merchandise purchased from them will be found strictly according to contract, and true to name.
We have known the officers for many years past, and our business relations have been entirely satisfactory. The company has ample capital for the business done, and we take pleasure in most heartily recommending them to anyone desiring to purchase trees, shrubbery or other nursery stock. Very truly yours,
HENRY C. BREWSTER, President.

NUMBER OF TREES ON AN ACRE

| | |
|------------------------------|------|
| 40 feet apart each way | 28 |
| 30 feet apart each way | 50 |
| 25 feet apart each way | 70 |
| 20 feet apart each way | 110 |
| 18 feet apart each way | 135 |
| 15 feet apart each way | 205 |
| 12 feet apart each way | 300 |
| 10 feet apart each way | 435 |
| 8 feet apart each way | 680 |
| 6 feet apart each way | 1210 |
| 5 feet apart each way | 1745 |
| 4 feet apart each way | 2725 |
| 3 feet apart each way | 4840 |

To ascertain the number of plants required for an acre at any given distance, divide 43,560 (the number of sq. ft. in an acre) by the distance between the plants in the row, multiplied by the distance between the rows.

Example: Plants set in rows 4 ft. apart with the plants 2 ft. apart in the rows, gives each plant 8 sq. ft.; 43,560 divided by 8 gives 5545 plants per acre.

HINTS ON TRANSPLANTING, ETC.

It is very easy to transplant trees successfully if these directions are followed.

With "Green's Quality Trees" the most inexperienced men can set out orchards with the highest degree of success. Experience has taught us that 90% of the trees that die do so because the persons who planted them did not have directions for transplanting to follow, or did not follow the ones they had. Were it possible for us to plant and care for the stock we sent out we would willingly insure the growth of every tree and plant. These directions are invaluable to you, for if they are followed your trees, plants, etc., can be set out with the surety of a reasonable degree of success.

PREPARATION OF THE SOIL.—Prepare a rich, deep bed of mellow soil, and have the land sufficiently drained to relieve the roots from standing water. To insure a fine growth, land should be in as good condition as required for a crop of wheat, corn or potatoes.

PREPARATION OF TREES OR OTHER STOCK.—We use great care in digging or packing, but the loss of some small roots and fibers is unavoidable. If stock is properly prepared before it is planted, no permanent injury will result from this, but the preservation of the natural balance between top and roots renders a *vigorous cutting back of the former absolutely necessary* in some cases. And, therefore, prune off broken ends of roots, if any (a smooth cut root granulates or makes ready to extend sooner than one broken off), cut back the tops to the extent of about one-half the previous season's growth, taking care at all times to prune in such a manner as will tend to develop a well-formed head, sufficiently open to admit air and light freely. Evergreen and other ornamental trees, the beauty of which depends on preserving their natural form, should be pruned very little. Hence, great care should be taken in planting and caring for these. If not ready to plant when the stock arrives, "heel it in" by placing the roots in a trench and covering them with mellow earth, *well packed*.

PLANTING.—Make the holes large enough to admit the roots without any cramping or bending, and deep enough to bring the tree to its natural depth. The fine surface soil should be used in covering the roots, and this should be carefully worked among them. If the ground is dry it is well to pour in some water when the hole is partially filled. *See that the ground is firmly and solidly packed over all parts of the roots by exerting the full weight of the planter upon it*, so that there will be no opportunity for dry air or frost to enter and destroy roots deprived of the full benefit of their natural protection. Omission to pack the earth solidly is a most frequent cause of failure in planting nursery stock. Fill the holes even enough to be even with the surrounding surface after the fresh

earth settles. Always remove the label when planting. If this is left until the tree is grown, the connecting wire often cuts into and destroys the tree or branch to which it may be attached. *Never use wire in contact with roots*. When planting dwarf trees set them low enough to cover the stock upon which they are budded, but not lower. Large standard trees should be staked and tied so that the wind will not loosen the roots. This should be so done that the bands will not chafe the trees. It is a very good way to drive two stakes and confine the trees between straw or hay bands stretched from stake to stake.

MULCHING.—When trees or bushes are planted, they should be mulched or covered with a layer of coarse manure or litter three to six inches deep for a space of say, two feet more in diameter than the extent of the roots. This keeps the earth moist and even temperature.

AFTER-CULTURE.—Grass should not be allowed to grow about young trees or plants. The ground should be cultivated for a space of at least a foot outside the roots. If the ground is poor it should be enriched with surface applications of manure. Pruning should be varied according to the condition of the tree and the purpose of the planter. It should be done regularly each spring before the buds swell any. In this way the removal of large branches will be avoided.

FALL PLANTING.—When planted in the fall, all trees should be banked up at least one foot high until spring. This overcomes the tendency of trees to heave out, protects them from mice and prevents the roots from freezing before they have taken hold of the soil. In planting roses, shrubs, vines and other delicate stock in the fall, *the tops should be nearly or quite buried with mellow earth during the first winter*. The surplus earth should be removed early in the spring.

If trees are received in a frozen state, place the package unopened in a cellar, away from the frost and heat, until thawed out and then unpack. If partially dried from long exposure, bury entirely in the ground or place in water from 12 to 24 hours.

Green's Bargain Collections

CHERRY COLLECTION No. 1

26 Trees for \$3.48

- 5 Early Richmond. Early sour.
 - 10 Montmorency. Medium early sour.
 - 5 English Morello. Late sour.
 - 2 Gov. Wood (White). Earliest sweet.
 - 2 Green's Black Tartarian. Medium sweet.
 - 2 Napoleon (White). Late sweet.
- All first class, medium size trees two years old.

Bargain Price, All for \$3.48

(Catalogue Price, \$4.20)

CHERRY COLLECTION No. 2

10 of the best Sour Cherries for \$1.95
Green's Special Sour Cherry Collection

First Class Largest Two-Year Trees
1 Dyehouse 3 Early Richmond
5 Montmorency 1 English Morello

10 Trees Special Price \$1.95

(Catalogue Price, \$2.25)

CHERRY COLLECTION No. 3

Six Grand Sweet Cherries for \$1.20
Green's New Sweet Cherry Collection

Largest Two-Year Trees, 6 to 7 Feet

- 2 Green's Tartarian 1 Gov. Wood
- 1 Napoleon 1 Windsor
- 1 Schmidt's Bigarreau

6 Trees, Special Price, \$1.20

(Catalogue Price, \$1.50)

Green's Bargain Plum Collection

- 1 Abundance 1 Burbank 1 Gueii
- 2 Lombard 2 York State
- 2 Shropshire Damson
- 2 Niagara 1 Bradshaw

**12 Trees all largest size best stock,
Special Price for Spring 1911, \$2.35**

(Catalogue Price, \$3.60)

Green's Special Plum Tree Collection

6 TREES FOR \$1.00

- Six Selected for the Home Garden
- 1 Abundance 1 Burbank
- 1 Niagara 1 Lombard
- 1 Bradshaw 1 York State Prune

All first-class medium size trees.

Green's Special Prices, \$1.00

(Catalogue Price, \$1.50)

Surprise Collection in Shrubs

3 Flowering and Foliage Shrubs and Vines

- 2 Althea, 2 Spireas, 2 Deutzias,
 - 1 Weigela, 1 Purple Berberry
 - 1 Golden Elder, 1 Snowball, 1 Yucca,
 - 1 Golden Willow, 1 Clematis Paniculata.
- 3 Extra Strong Specimens ready for blooming 1st season.

Bargain Price for Spring 1911 is \$1.60

(Catalogue Price, \$3.00)

Green's New Rose Collection

6 ROSE BUSHES FOR 98 CENTS

Red, White, Pink and Yellow: 1 New Yellow Soleil d'or, 1 Live Forever Pink Rose, 1 General Jack, 1 Dorothy Perkins, 1 Magna Charta, 1 Crimson Rambler. All large 2-year-old bushes which will bloom the coming summer. Regular price \$1.40. **Special Bargain Price 98c.**

Green's New Quince Collection

8 First-class Trees—3 to 4 Feet High
All for \$1.98.

- 3 Orange 3 Champion
- 1 Meech's Prolific
- 1 Missouri Mammoth.

All trees used in this collection, first-class 3 to 4 feet high.

Bargain Price, All for \$1.98

(Catalogue Price \$2.40)

Green's New Peach Collection

10 First Grade, 5 to 6 feet Trees for \$2.18

- 1 Niagara, 3 Elberta, 2 Crawford Early,
- 2 Crawford Late, 1 Hill's Chili, 1 Crosby.

All trees in this collection—First-class, Extra size, 5 to 6 feet high.

Bargain Price, All For \$2.18

(Catalogue Price, \$2.55)

GREEN'S NEW GRAPE VINE BARGAIN

10 VINES FOR 98c.

Our offer is 2 Brighton Early Red; 2 Concord, black; 1 Moore's Early, black; 1 Regal, red; 2 Niagara, white; 1 Worden Black; 1 Green's New Black Grape; all 2 year-old, first-class grape vines for 98 cents.

(Catalogue Price, \$1.35)

THE QUALITY OF OUR TREES CANNOT BE EXCELLED.

CHERRY TREES

The cherry thrives best on a sandy or gravelly soil, and there attains its highest perfection, but it will do well in any situation except a wet one. It is one of the most ornamental of all fruit trees. With its delicious and refreshing fruit it is very desirable for planting near the dwelling, where beauty and shade as well as fruit are much sought for and so desirable.

We divide cherries into two classes; "Hearts and Bigarreaus," and "Dukes and Morellos." The first are strong and vigorous growers, making large, open spreading heads or tops, and are the best suited for the purpose of shade and produce large heart shaped, sweet fruit. The Dukes and Morellos are all of slower growth, more hardy and less liable to get injured by bursting of the bark. They generally produce acid fruit.

A good bearing orchard 8 to 10 years old, providing that the fruit sold at the average price, should bring about \$450 per acre. The trees begin to bear very young and produce fruit every year, for which there is an abundant market.

CHERRY COLLECTION No. 1

26 Trees for \$3.48

- 5 Early Richmond. Early sour.
 - 10 Montmorency Medium early sour.
 - 5 English Morello. Late sour.
 - 2 Gov. Wood (White). Earliest sweet.
 - 2 Green's Black Tartarian. Medium sweet.
 - 2 Napoleon (White). Late sweet.
- All first class, medium size trees two years old.

Bargain Price, All for \$3.48

(Catalogue Price, \$4.20)

CHERRY COLLECTION No. 2

10 of the best Sour Cherries for \$1.95
Green's Special Sour Cherry Collection

First Class Largest Two-Year Trees

- 1 Dyehouse 3 Early Richmond
- 5 Montmorency 1 English Morello

10 Trees Special Price \$1.95

(Catalogue Price, \$2.25)

CHERRY COLLECTION No. 3

Six Grand Sweet Cherries for \$1.20
Green's New Sweet Cherry Collection

Largest Two-Year Trees, 6 to 7 Feet

- 2 Green's Tartarian 1 Gov. Wood
- 1 Napoleon 1 Windsor
- 1 Schmidt's Bigarreau

6 Trees, Special Price, \$1.20

(Catalogue Price, \$1.50)

CHERRY COLLECTION No. 4

10 ONE YEAR OLD CHERRY

To introduce our splendid 1 year old cherry trees

We offer ten first-class 1 year trees 4 to 5 feet for \$1.75. All the largest size, best, sweet.

- 2 Green's Tartarian, 2 Napoleon,
- 2 Gov. Wood, 2 Windsor,
- 1 New Bing, 1 New Lambert.

Ten Trees, Bargain Price \$1.75

(Catalogue Price \$2.20)



ORDER OF RIPENING

Hearts and Bigarreaus (Sweet)— Gov. Wood, Greens Tartarian, Yellow Spanish, Napoleon, Lambert, Schmidt's Bigarreau, Centennial, Bing, Windsor, Dyehouse, Early Richmond, Ostheime, Montmorency, Wragg, English Morello.

One year cherry trees are very scarce in many of the leading nurseries of the cherry growing localities of the west. Two-year old trees will be scarce and much higher in price next fall and spring, so we advise all who want to plant a cherry orchard to buy now when the prices are lower than ever before. Early Richmond, Montmorency, Green's Tartarian, and Napoleon are very profitable varieties and will make money for all who plant them. Cherry trees are better and cheaper this year than they have been for some time past or will be for some time to come. You cannot afford not to buy now.

A two-year old cherry tree will bear a gallon of cherries and one ten-year-old tree will bear from 100 to 200 pounds. One acre will grow 100 trees and figuring 150 pounds to the tree will yield 15,000 pounds, which if sold at 20 cents per pound only, will bring a return of \$3,000 per acre.

READ INSIDE FRONT COVER BEFORE PLACING YOUR ORDER.

Prices of All Varieties of Cherries—All 2 to 3 Year Old

| | Each | 10 | 100 |
|---|----------|--------|---------|
| First-class Largest Size - - - - - | 25 cents | \$2.00 | \$15.00 |
| First-class Medium or Orchard Planting Size - - - - - | 20 " | 1.50 | 11.00 |
| First-class Smaller Size, Branched - - - - - | 15 " | 1.00 | 8.00 |

NOTE:—Our prices are the same on all varieties of 2 to 3 year old cherry trees, both "Hearts and Bigarreaus," (Sweet) and "Dukes and Morellos," (Sour.)

ONE YEAR OLD CHERRY TREES—

For those who prefer planting 1 year cherry trees we offer the following sweet varieties. (We haven't any 1 year sour varieties to sell.) Bing, Green's Tartarian, Gov. Wood, Lambert, Napoleon, Windsor. **SWEET EXTRA NICE, Heavy cherry trees, 1 year old, well branched, 4 to 5 feet, each 22c, \$2.00 per 10, \$12.50 per 100.**

Consider the desirability of planting a cherry orchard of Early Richmond and Montmorency if you wish to add materially to your farm revenue. In any event plant a few trees of both sweet and sour for home use. You will never regret it.

**CHERRY COLLECTION No. 4
10 ONE YEAR OLD CHERRY**

To introduce our splendid 1 year old cherry trees

We offer ten first-class 1 year trees 4 to 5 feet for \$1.75. All the largest size, best, sweet.

- 2 Green's Tartarian, 2 Napoleon,
- 2 Gov. Wood, 2 Windsor,
- 1 New Bing, 1 New Lambert

Ten Trees, Bargain Price \$1.75

(Catalogue Price, \$2.20)



The above drawing illustrates the best method of setting out a cherry orchard so as to utilize all available space to the best advantage. Cherry trees are usually planted from 18 to 20 feet apart and strawberries, currants, raspberries and other varieties of small fruits are planted between the rows of trees in the orchard.

There are few trees more attractive to the homemaker and fruit grower than cherries. The sweet cherries are especially desirable for the garden or lawn, on account of their foliage, attractive blossoms, and fruit. The sour cherries are planted by thousands for home use and market. It is only recently that fruit growers have learned of the big profits made in an orchard of cherries.

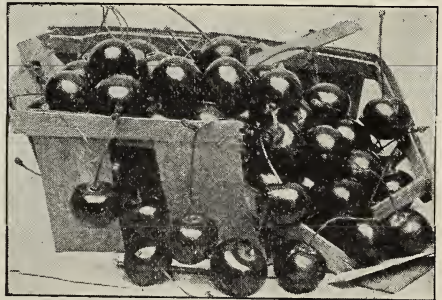
THE QUALITY OF OUR TREES CANNOT BE EXCELLED.

DUKE AND MORELLO CHERRIES (Sour)



EARLY RICHMOND CHERRY—This is a hardy cherry, fruiting on young trees soon after planting. We have at Green's fruit farm quite an orchard of Early Richmond cherry trees that are heavily loaded with fruit almost every year. The fruit does not rot upon the trees, and can be left without picking longer than most varieties. The trees bear fruit regularly each year, and the orchard has been highly profitable. We allow the trees to branch near the ground so that it will not require long ladders to gather the fruit. This is a great convenience. By driving a wagon between the rows a large amount of fruit can be picked from the platform of such wagon. Early Richmond is a great favorite throughout the West and Northwest, where only hardy varieties succeed. The tree is a free grower; hardy, healthy and very productive. One of the best. "If I could plant but one cherry it would be Early Richmond," says *American Agriculturist*. "For Illinois, Early Richmond can be relied upon for market. It is a safe, reliable, worthy favorite. Fruit, medium size, round, dark red flesh, melting, juicy and acid, unsurpassed for hardiness and cooking purposes, a great bearer. June.

DYEHOUSE—A hardy and valuable cherry. Unquestionably the earliest cherry, ten days earlier than Richmond, fine quality, its early bearing remarkable as its great hardiness. Often bears at two years old, and has the appearance of being covered with a scarlet cloth, such is the abundance of the fruit. Has the smallest pit of any cherry known; a splendid keeper and free from knots. For tarts, pies, and especially for canning, it has no superior among cherries. June.



WE ARE GROWING THE BEST STRAINS OF THE OLD STANDARD SORTS AND MAKING A CAREFUL SELECTION OF NEW VARIETIES.

DUKE AND MORELLO CHERRIES (Sour)

MONTMORENCY—(See cut on opposite page.) King of the hardy cherries. Large, bright, shining red, acid, late, valuable. Hardy and productive. Canning houses demand this variety. You cannot make a mistake in planting it. "For home use and market the Montmorency is valuable." It is a safe, reliable, worthy favorite. More money has been made with Montmorency than with any other. No one sees a glut in the market of the large showy Montmorency. Eighty per cent. of our new orchard will be Montmorency. We have grown hundreds of bushels. The Montmorency brings twice the usual price in market. Plant Montmorency.

Montmorency Cherry is not surpassed in value by any other cherry in the world. It ripens rather late in the season when cherries are scarce. The past season I saw a row of Montmorency cherry trees planted by the roadside. These trees were branched low, which makes picking easy with short ladders. The trees were so densely filled with the bright red fruit they were as handsome as rose bushes. I never before saw such a beautiful sight in the way of cherries. This cherry and all cherries are attracting more attention each year. Cherry orchards are found to be profitable. There is no more attractive tree for the home ground than the cherry in bloom and fruit.

(See Cut of Montmorency on Opposite Page)

CHERRY COLLECTION No. 2
 10 of the best Sour Cherries for \$1.95
 Green's Special Sour Cherry Collection
First Class Largest Two-Year Trees
 1 Dyehouse 3 Early Richmond
 5 Montmorency 1 English Morello
10 Trees Special Price \$1.95
 (Catalogue Price, \$2.25)

ADDITIONAL VARIETIES

In addition to the varieties of cherries described in catalog we have a limited supply of the following: **Bates, Baldwin, Centennial, Late Duke and Wragg.**

MAY DUKE—An old, well known variety, large; dark red, juicy and rich. Tree hardy and productive, ripens a long time in succession. Middle of June.

CHERRY COLLECTION No. 1

26 Trees for \$3.48

5 Early Richmond. Early sour.
 10 Montmorency. Medium early sour.
 5 English Morello. Late sour.
 2 Gov. Wood (White). Earliest sweet.
 2 Green's Black Tartarian. Medium sweet.
 2 Napoleon (White). Late sweet.
 All first class, medium size trees two years old.

Bargain Price, All for \$3.48.

(Catalogue Price, \$4.20)



MORRELLO CHERRY ORCHARD AT
 ROCHESTER, NEW YORK

LARGE ENGLISH MORELLO CHERRY—Without doubt one of the most valuable of this class. Easily grown, generally producing a heavy crop. Fruit dark red, quality good, with a rich, acid flavor; late. Tree very hardy, and recommended for extremely cold latitudes. Very reliable bearer and good money maker. August.

OLIVET—Large; skin dark red; tender, rich, vinous, with mild sub-acid flavor. Productive. A pleasant cherry to eat out of the hand and when canned surpasses anything we have tasted.

OSTHEIME—Large, heart-shaped, nearly black when ripe, juicy and rich; fine for dessert and cooking.

CERTIFICATE

This is to certify that the stock in the nursery of Green's Nursery Co., of Rochester, County of Monroe, State of New York, was duly examined in compliance with the provisions of Section 305, of the Agricultural Law, and it was found to be apparently free from any contagious or infectious disease or diseases, or San Jose scale or other dangerously injurious insect pest or pests. This certificate expires Sept. 1, 1911.

Dept. of Agriculture, Albany, N. Y. R. A. PEARSON, Commissioner of Agriculture.
 Dated Sept. 1, 1910



PLANT MONTMORENCY HARDY RED CHERRY

HEARTS AND BIGGAREAUS (Sweet)



GREEN'S TARTARIAN CHERRY—Fruit of the largest size, frequently measuring an inch in diameter; flesh dark, half tender, with a peculiar liver-like consistency, rich, nearly destitute of acid, of fine flavor. The vigorous growth and great productiveness of the tree, and the large size and mild, sweet flavor of the fruit, render this variety a general favorite. This grand reliable sweet cherry is a great favorite. You should not fail to plant Green's Tartarian black cherry. Good for eating fresh from tree, canning and market. In front of our Rochester house are two trees which are a wonder to all who see them. They never fail to bear a heavy crop of fine fruit. The trees are forty years old. They have reached an age when most cherry trees begin to fail and to become unproductive, but these trees are as productive as in their earlier years. A notable peculiarity of the fruit upon these trees is that it remains on the trees in an eatable condition for nearly three weeks. I have never known cherries to remain so long upon the trees. The fruit from these trees sells in the market more readily than any other fruit we are acquainted with. It is accepted by our market-men as the Black Tartarian. It has much the same appearance as the Black Tartarian, and yet we have never known that good old variety to remain so long in perfect condition upon the trees, which is a desirable feature in prolonging the season for family use. We call it Green's Tartarian Cherry, not to indicate that it is a new variety, but to indicate that it is what we represent it to be—a superior strain of the Black Tartarian.—First of July.

LAMBERT CHERRY—(New). One of the largest of the sweet cherries. So far productive. Color, dark red; flesh solid; an excellent shipper. New.

YELLOW SPANISH—Large, pale yellow, with light red cheek; firm and delicious. Late June.

BING—This new and superior sweet cherry originated near Portland, Oregon, and is one of very large size, almost black in color when ripe, of fine quality, very productive, a good shipper. New.

CHERRY COLLECTION No. 3

Six Grand Sweet Cherries for \$1.20

Green's New Sweet Cherry Collection

Largest Two-Year Trees, 6 to 7 Feet

2 Green's Tartarian 1 Gov. Wood

1 Napoleon 1 Windsor

1 Schmidt's Bigarreau

6 Trees, Special Price \$1.20.

(Catalogue Price, \$1.50)

WE DO NOT CLAIM TO FURNISH THE CHEAPEST TREES IN THE WORLD, BUT WE DO CLAIM THAT NO BETTER OR HEALTHIER TREES ARE GROWN THAN OURS.



SCHMIDT'S BIGARREAU—Fruit large size, of a deep mahogany color; flesh dark, tender, very juicy, with a fine rich flavor. Grows in clusters. An excellent shipper being firm and most attractive. Tree very hardy, a strong and vigorous grower. A cherry of quality. Stone very small. First of July.

MONEY IN CHERRIES—Out in Oregon they have a cherry orchard which last year gave a crop worth \$1,100 an acre. The same man had a peach orchard three years old which returned \$800 an acre. Another farmer in the Rogue river district got \$14,000 worth of fruit off seven acres, then sold the seven acres for \$35,000.—Scientific Farmer.

We offer Cherry Trees by mail postpaid see mail pages at end of catalogue.

WINDSOR CHERRY—Tree upright, vigorous and rapid grower; leaves large. Fruit large, roundish, oblong, very firm, juicy, mottled red; flesh pinkish, sometimes streaked. Quality good, heavy bearer. It hangs a long time and does not rot badly. No cherry of recent years has attracted more attention, owing to its large size, beautiful, dark color, almost black; its firmness; its qualifications as a shipper, and its excellent eating qualities. The variety has been recommended by Willard and others of the most prominent fruit growers of the country who have given it a thorough trial, and have found it unexcelled by any variety for home use and for market. It originated in the cold, severe climate of Canada. There is no question about the value of the cherry.

CHERRY COLLECTION No. 4
10 ONE YEAR OLD CHERRY
 To introduce our splendid 1 year old cherry trees
 We offer ten first-class 1 year trees 4 to 5 feet for \$1.75. All the largest size, best, sweet.
 2 Green's Tartarian, 2 Napoleon,
 2 Gov. Wood, 2 Windsor,
 1 New Bing, 1 New Lambert
Ten Trees, Bargain Price \$1.75
 (Catalogue Price, \$2.20)



NAPOLEON BIGARREAU (Royal Ann)—Is one of the best of the firm-fleshed Cherries; it is one of the largest size, often measuring an inch in diameter; well flavored, handsome and productive; skin pale yellow, becoming amber in the shade, richly dotted with deep red, and with a fine marbled, dark crimson cheek; flesh very firm, juicy, with a good flavor; profitable for marketing. June.

GOVERNOR WOOD—A rich and delicious large red cherry that hangs well on the tree. Very popular. June. Its color is clear bright red. It is tender, delicious and hangs well on the tree. This is one of those famous varieties that has made cherry growing popular. The tree itself is an ornament for any home, owing to its shade and beautiful blossoms, and the beauty of its fruit, to say nothing of the charms of fruit itself for eating.



GOV. WOOD SWEET CHERRY

AN INFERIOR TREE IS DEAR AT ANY PRICE.

PLUM TREES

Plums and prunes are indispensable for the home garden and orchard and have proven to be a source of large income to the commercial orchardist.

There should be six or more plum trees in every garden or orchard. Plums are not difficult to cultivate, and they are among the hardiest of our orchard fruits. Taking all into consideration, the best soil for plums is a loose, deep, gravelly loam, with an open sub-soil, such as is suited for apples or potatoes, although almost any soil may be used provided it is well drained.

The **York State Prune** and the **Shropshire Damson** with the Japan varieties are now attracting more than usual attention owing to the large returns that have been realized from the fruit of these varieties the past two or three seasons.

The trees can be planted much closer together than apple or pear, and yet in field cultivation it is not best to crowd any kind of fruit trees; but in gardens plums will fruit well when planted ten or twelve feet apart. Plum trees bear at an early age. The yield of plums from an acre is surprising. Plum trees are usually planted when two years old from the bud, although some of the strong growing kinds, Burbank, Abundance and other Japan kinds, especially, may be planted a year old with good results. Plum trees are planted as far apart as peaches; that is, from 15 to 18 feet apart each way. Many growers prefer to plant closer one way than the other, and eventually to stop cultivation in one direction. If this system is used they may be placed 18 or 20 feet apart one way, and from 10 to 12 feet the other way.

Prices of Plum Trees

EXCEPT WHERE OTHERWISE NOTED

| | Each | 10 | 100 |
|---|------|--------|---------|
| First-class Largest Size | 25 | \$2.50 | \$18.00 |
| First-class Medium or Orchard Planting Size | 25 | 2.00 | 14.00 |
| First-class Smaller Size, Branched | 20 | 1.50 | 10.00 |

All trees carefully graded. The lighter grades are clean, nice trees, with good roots, well branched.

We offer also a select lot of one-year trees of the following varieties: Abundance, Burbank, Climax, Red June, Shiro, and Wickson Japan, and Thanksgiving Prune one year trees; 4 to 5 ft. at 20c each, \$1.75 per 10, \$13 per 100; 3 to 4 ft. at 15c each, \$1.40 per 10, \$12 per 100.

List of Plums offered given in order of ripening:

Red June, Abundance, Climax, Bradshaw, Niagara, Moore's Arctic, Imperial Gage, Shiro, Burbank, Lombard, Shipper's Pride, Gueii, Pond's Seedling, Reine Claude, Lincoln, Yellow Egg, Beauty of Naples, Coe's Golden, Wickson's, Grand Duke, Monarch, Green Gage, German Prune, Italian Prune-York State, Shropshire Damson, Thanks, giving.

Green's Bargain Plum Collection

1 Abundance 1 Burbank 1 Gueii
 2 Lombard 2 York State
 2 Shropshire Damson
 2 Niagara 1 Bradshaw
**12 Trees all largest size best stock,
 Special Price for Spring 1911, \$2.35
 (Catalogue Price, \$3.60)**

"After many years' experience in growing fruit for market we have come to the conclusion that Plum trees are a good investment, especially the Shropshire Damsons and York State Prunes. Year after year our trees have been loaded with fruit."

I have concluded that Green's is the place to trade. Will send in a larger order next spring. Yours very truly,

E. J.—N. Y.

Received trees in fine condition, will have a large order for spring shipment.

E. V. S.—Ohio.

For 30 years I have preached and persuaded people to plant orchards and fruit gardens. Now it is proven that there is no method of occupying the soil so profitably as by planting trees, berry bushes or grapevines.—C. A. GREEN.



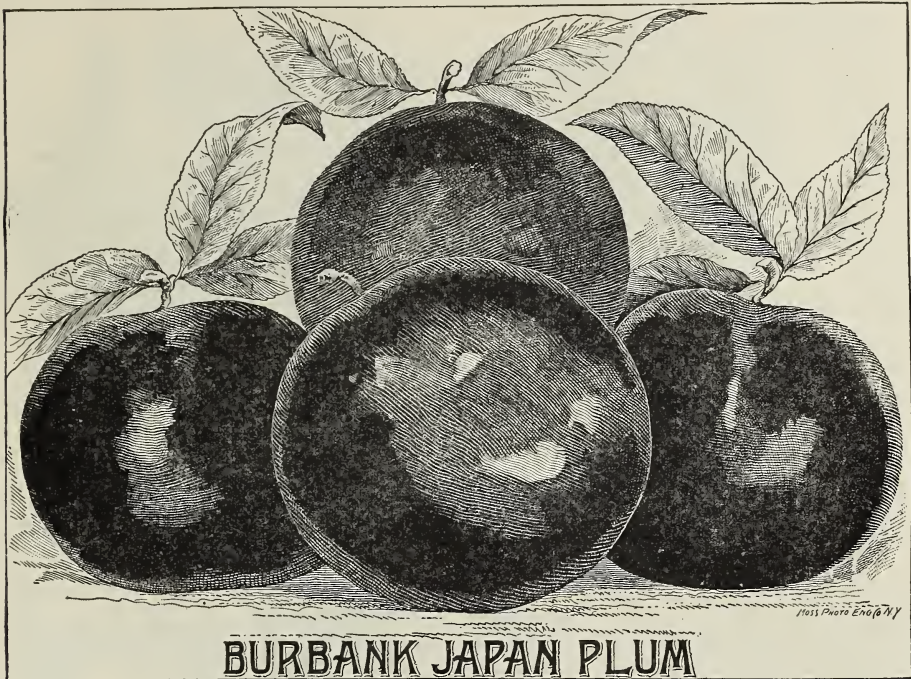
SHIPPERS PRIDE (REDUCED)

SHIPPER'S PRIDE—Large, dark purple, very showy, often measuring two inches in diameter; fine, juicy and sweet. A beautiful and valuable variety. Sept.

Green's Nursery Co.,

I received the trees O. K. last Thursday in perfect condition. J. W. C., Carbondale, Pa.

READ INSIDE FRONT COVER BEFORE PLACING YOUR ORDER.



THE BURBANK PLUM

Burbank is one of the best of Japan Plums. Unsurpassed for beauty and productiveness, as well as great hardiness of tree, with a foliage so perfect as to contribute in an essential degree to its health. Fruit large, oval, often with a slight neck; skin reddish purple; flesh yellow, juicy and good. Its beauty and value as a market variety is unsurpassed.

It ripens later than the Abundance. There are few or none of the Japanese plums so far generally tested, that have proven of so much worth as the Burbank. It is an abundant bearer, and several years' trial has proved it to be hardy in almost the entire United States.

Burbank plums are making a good record over a large extent of this country, even in the Rocky Mountain region. They bear abundantly at an early age. The fruit is exceedingly beautiful, of fair quality, and is especially desirable for canning. These Japan plum trees bear so abundantly they overflow the market during a season when plum orchards are bearing heavy crops. The Japan plums do not rot so easily at Green's fruit farm as the other varieties. We can pick them a week before fully ripe. They have the faculty of ripening up nicely after being thus early picked, and are not so liable to rot when picked very early. See

illustration. We offer 1 year trees of this variety as well as the regular 2 year, etc., in following pages.

Extracts from Letters (Showing profit in Plums.)

I had 16 Japanese plum trees that netted me \$100, or a little more than \$6 per tree. This is one of the surest crops we have, and bids fair to become one of the leading varieties of fruit planted in this section in the future.

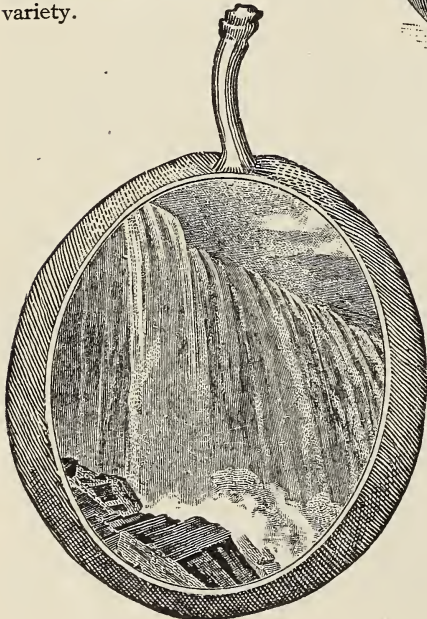
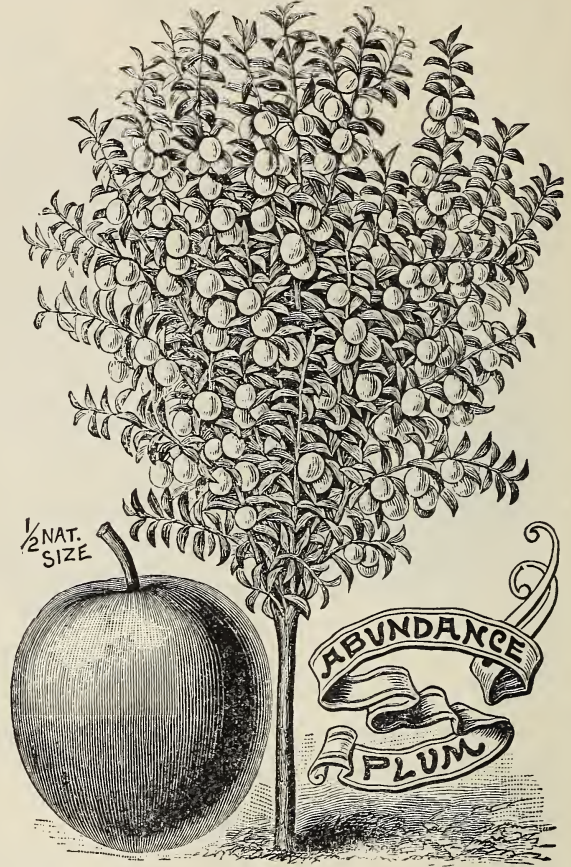
"I had quite a crop of plums. From 150 trees, I shipped 3,992 eight pound baskets, 31,936 pounds of fruit. On the same ground, between the trees, I have 1,200 currant bushes, from which I picked 956 quarts of currants. The plums and currants netted me \$650—all from 1 $\frac{3}{4}$ acres of ground. The plum trees have been set five years, and the currants four years."

"About half of our 100 trees are Lombards, the remainder are Yellow Egg, Moore's Arctic, Shropshire Damsons, Imperial Gage, Bradshaws and Gueii (we have since added the later varieties, but they have not come into bearing.) *We have already harvested two hundred bushels of fine plums and have forty-four bushels ordered, and have still enough plums on the trees to fill orders and have refused to take orders for almost two hundred bushels that we had calls for.*"

A SAFE RULE IS "NOT THE CHEAPEST BUT THE BEST."

ABUNDANCE JAPAN PLUM—Fruit large, showy, beautiful. Amber, turning to a rich, bright cherry color, with a decided white bloom, and highly perfumed. Flesh light yellow, exceedingly juicy and tender, of a delicious sweetness, impossible to describe. Stone small and parts readily from flesh. For canning it is of greatest excellence. Its season is very early, ripening in advance of other plums, thus adding to its special value.

The Abundance plum at Green's fruit farm is a sight to behold. The Abundance is well named. The editor of *The Rural New Yorker* writes: "From one little Abundance tree we picked ten pecks of fruit. The quality is excellent. When fully ripe they are full of juice. The flesh is tender, and there is mingled with the plum a peach flavor that is refreshing and agreeable." We offer 1 year trees as well as 2 year in this variety.

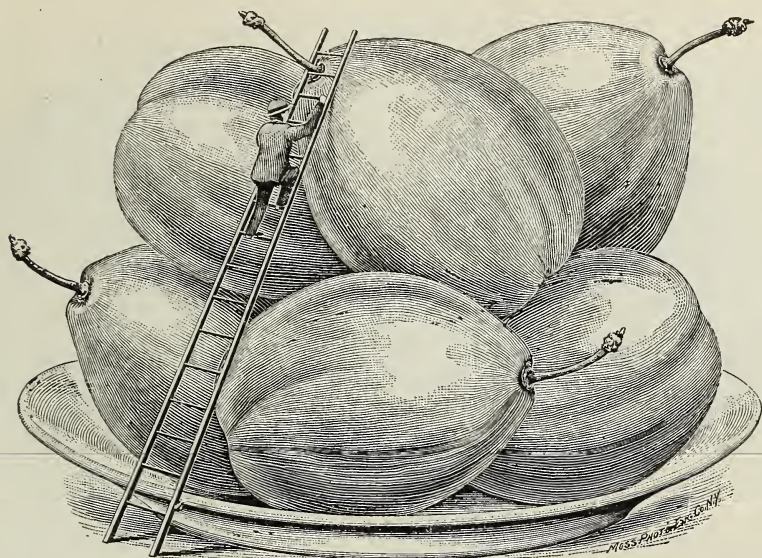


NIAGARA PLUM

NIAGARA PLUM—This plum has become exceedingly popular through Western New York, where it originated. It is a very early plum, and valuable for this reason. It is red, large size, making an attractive appearance in market, and possesses good shipping qualities. It bears enormous crops of fruit with great regularity. No one will be disappointed in planting the Niagara plum, either for home use or for market. The tree is an upright grower, vigorous and healthy.

GUEII—(Blue Magnum Bonum)—This is one of the newer varieties originating in New York State. Season of ripening rather late. The color is dark purple. The flesh is firm, sub-acid and agreeable. Size large. It would be difficult to select a larger or more attractive plum for the garden or orchard than this. A leading plum grower of Geneva, New York, picked and marketed in one season 40,000 eight pound baskets of plums. September.

Tree planting involves years of outlay, care and waiting, and no planter can afford to handicap himself by beginning with inferior specimens.



York State Prune. Large, Beautiful and of Superior Quality.

YORK STATE is one of the largest, best in quality and most productive of all prunes or plums. Size large; color dark blue, covered with purple bluish; flesh yellow and delicious; freestone, ripening the last week in September, at Rochester, N. Y. This prune originated at Dansville, N. Y., where it has been grown largely by the Germans, who are great fruit growers. It is a seedling of the German Prune and has been sold by these Germans for German Prune to Buffalo fruit buyers in large quantities at profitable prices. It resembles Fellemberg more than it does German Prune. York State Prune is a vigorous grower, and is healthy and hardy here at Rochester. A former president of the American Association of Nurserymen writes: "The York State Prune is unquestionably a seedling of German Prune. It is larger than German Prune, resembling in size more nearly the Fellemberg. It is prune shaped, good size and a splendid seller. I never saw a handsomer sight than an orchard of York State Prunes in full bearing at South Byron, N. Y." September.

PROFIT IN GROWING PRUNES—There is no easily grown fruit that gives greater or more certain profit than the prune. The best varieties were introduced in this country by Germans many years ago, and for a time these furnished the only market for them. But the prune as a fruit for drying has entirely surpassed the plum, and though it is always dried whole, the seed is not troublesome to the eater. The Pacific

Coast States have furnished most of the prunes for commerce. But it is a fruit that succeeds equally well in the East, with the advantage that if more grown near our large cities, there will be considerable demand for the fruit for eating when ripened, but not dried.

GERMAN PRUNE—Medium oval purple or blue, juicy, rich, fine. Tree vigorous and very productive. One of the best. September. Sells for higher prices in market on account of high quality. A leading favorite. There is no easily grown fruit that gives greater or more certain profit than the German Prune.

Price of all Prunes the same as for plums.

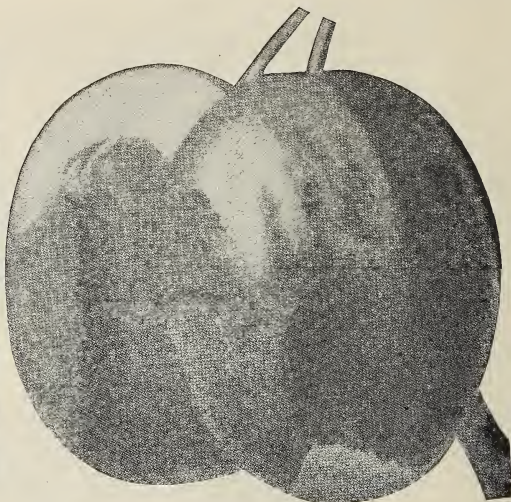
FELLEMBERG—(Italian or French Prune)—Medium, dark blue, juicy, sweet and delicious; parts from the stone; fine for drying. Last of Sept.

THE THANKSGIVING HARDY PLUM—A sweet rich quality, variety introduced by us some years ago. Tree an extra strong grower. Fruit remarkable for its keeping quality, and tree for its hardiness. The fruit has been kept in good condition a month or more after picking. Season latest of all plums and prunes. We offer one year trees as well as two year trees of the variety.

POND—(Hungarian Prune)—A magnificent plum, red, changing to violet. One of the most attractive. Sept.

YELLOW EGG—Very large, egg shaped, productive; excellent for cooking. Aug.

PRUNUS PISSARDI—An ornamental plum, producing fruit. The most striking ornamental fruit tree grown. Price, 5 to 6 ft., 35c. each. See description in ornamental pages.



SHROPSHIRE DAMSON PLUM—This Damson is being planted by the thousand. Growers have not been able to furnish enough trees to supply the demand, in such esteem it is held by those who are looking for big returns for labor and money invested.

The Shropshire Damson is a splendid market plum. It is a small, blue plum, and rather coarse to suit the writer's taste, but it sells well and is a very prolific bearer. This is the best of the Damsons. These are smallish plums, produced in thick clusters or groups, almost hiding the branches from view. It is highly prized for canning and for preserving. The tree is not a rapid grower in the nurseries and is difficult to propagate, therefore trees are always in short supply.

IMPORTANT NOTICE

Those who receive plants, vines or trees of us, who have complaint to make regarding the condition or grading must notify us within six days after receiving the trees, etc. It is not fair to us to make complaints months or possibly a year after the trees were received. Therefore, unless complaints are made within six days after the receipt of the trees no attention will be given to those complaints.

All shipments travel at the risk and cost of purchaser.

All orders subject to shortage caused by fire, flood or other causes over which we have no control. We will replace free or refund the amount paid us for any stock not true to name, but are not liable for any other damages.

Green's Nursery Co. Mich. Oct. 22, 1910

I have the finest cherry orchard of E. Richmond's and Montmorency's which I bought of Green's Nursery, Rochester, N. Y. ten years ago,

John A. Evits.

BRADSHAW PLUM—A very large and fine early plum, dark violet red, juicy and good. Trees erect and vigorous; very productive; valuable for market. The tree is very hardy and vigorous. As regards productiveness it is unequaled by any plum we have ever fruited. To produce the finest fruit, heavy thinning should be practiced. The quality is excellent, and it is destined to become one of the most popular of all plums for canning, while its attractive color, good quality and shipping properties will cause it to be sought for as a market variety. It ripens ten days to two weeks later than Abundance. This plum resembles Niagara in size, color and general good qualities. It is becoming better known each year, and it is a grand variety, and no collection is complete without it.

RED JUNE JAPAN PLUM—A vigorous hardy, upright, spreading tree, as productive as Abundance; fruit medium to large, deep vermilion-red, with handsome bloom, very showy; flesh light lemon-yellow, slightly sub-acid, of good and pleasant quality; half cling; pit small. Of immense value for its very early ripening. It is best in quality of any of the early Japanese varieties and is exceptionally free from rot. Tree strong and spreading, immensely productive and comes into bearing in two or three years.

Green's Special Plum Tree Collection

6 TREES FOR \$1.00

Six Selected for the Home Garden

- | | |
|-------------|--------------------|
| 1 Abundance | 1 Burbank |
| 1 Niagara | 1 Lombard |
| 1 Bradshaw | 1 York State Prune |

All first-class medium size trees.

Green's Special Prices, \$1.00

(Catalogue Price, \$1.50)

GREEN GIVES "FAIR PLAY AND HALF THE ROAD."



THE WONDERFUL, LOMBARD PLUM TREES

LOMBARD PLUM. Hardy and Productive—Lombard is a great favorite for the following reasons: The tree adapts itself to any locality; it is extremely hardy, producing good crops where many varieties will not grow; it is a strong growing tree—trees on our grounds five years of age being as large again as some varieties planted the same year; it is exceedingly productive. My experience has been that it outyields most other varieties, and yet all varieties of plums are remarkably productive. It is not equal to some varieties in quality, yet it is enjoyable eaten out of hand, desirable for canning and other domestic purposes. The fruit usually hangs so thick on the limbs that we are compelled to thin out one half. The more you thin it, the larger, brighter and better the remaining fruit will be. It is a handsome reddish plum, flesh yellow, juicy and pleasant. It is an excellent variety, and should be planted in all gardens and orchards. It can be relied upon for a crop often when some other varieties fail. August.

GENERAL LIST OF PLUMS OFFERED

CLIMAX—Abundantly productive of its very large, heart shaped fruits, which are a deep rich red, fragrant, sweet fleshed and fine in every way. One of the earliest of all plums to ripen. The tree is strong, thrifty and hardy. Large Japan variety. July.

COES GOLDEN DROP (or Silver Prune)—Large Yellow; a great favorite. Season late. September.

GRAND DUKE—Color of Bradshaw; fruit very large, of fine quality, free from rot; very productive. Tree moderate grower, one of the best, largest size. Last Sept.

IMPERIAL GAGE—Large, pale green, juicy, sweet, rich and excellent. Aug.

LINCOLN—A large reddish blue variety. Good quality, very attractive. Season medium.

MOORE'S ARCTIC—Small, purplish-black, juicy, sweet; immense bearer; one of the hardiest in bud and bloom. Sept.

MONARCH—Very large, roundish oval; dark purplish blue, freestone, of excellent quality. An abundant bearer. Season Oct.

WICKSON—(Japan)—Fruit remarkably handsome, very large, long, heart-shaped, color deep maroon red, covered with white bloom; flesh firm and meaty, yellow, rich and aromatic; cling; pit small. Tree an upright vigorous grower. Excellent keeper and shipper, is being planted largely for market. Early Sept.

SHIRO—(Japan)—A strong grower, wood hardy and wiry, ripening early. Fruit is produced in profusion, medium to large, clear light yellow with thin white bloom, so transparent the pit can be seen through the flesh, which is firm, juicy, rich, pleasant and sub-acid.

BEAUTY OF NAPLES—This plum is of good medium size, of purple color, with slight bloom covered with yellow dots. It is a valuable variety for home use or for market.

REINE CLAUDE—(Bavay's Green Gage) Very large, greenish, fine flavor. Not surpassed in quality, beauty and size. Sept.

ITALIAN PRUNE—Good size, purple, juicy, delicious, fine for drying. Sept.

THE TEST OF A PUDDING IS IN EATING IT, AND OF TREES BY BUYING A FEW.

APPLE TREES

Prices of Apples and Crabs

Except where otherwise noted. All prices subject to change without notice.

| | Each | 10 | 100 |
|--|----------|--------|---------|
| First-class Largest Size, | 30 cents | \$2.75 | \$25.00 |
| First-class Medium or Orchard Planting Size, | 25 " | 2.25 | 20.00 |
| First-class Smaller Size, Branched, | 20 " | 1.75 | 15.00 |

All trees carefully graded. The lighter grades are clean nice trees, with good roots, well branched, for practical purposes equal to the heavier grades.

RARE VARIETIES. McINTOSH and WINTER BANANA.

| Price, | Largest Size, | Each | Per 10 |
|--------|---------------|------|--------|
| | 40 cents | | \$3.50 |
| " | Medium " | 30 " | 2.50 |
| " | Smaller " | 25 " | 2.00 |

See mailing pages of this catalog for prices on apple trees and other items by mail.

SUMMER AND AUTUMN APPLES



YELLOW TRANSPARENT APPLE

If you want the best and most productive yellow summer apple, plant Yellow Transparent. It has succeeded well at Green's fruit farm, where it has borne fruit in nursery rows and on orchard trees the second year planted. It is something like Early Harvest in appearance. It is a stronger, more upright grower and as great a bearer. We had a photograph taken of an orchard tree, laden with fine specimens, borne two years after planting. It has been tested in almost every state in the Union, and has been found hardy, productive, vigorous and desirable in every way. Its quality is superior and this, with its great beauty and wonderful productiveness, makes it a favorite summer apple the world over.

FANNY—A late summer, red apple, superior in beauty and quality, best of its season.

SWEET BOUGH—Large, light yellow, tender, sweet and excellent for baking.

find Duchess the best commercial variety, free from blight, a sure cropper, hardy as an oak, having survived in some instances, when all others died (except Wealthy), and all in all a wonderful variety.

MAIDEN'S BLUSH APPLE—Hardy and productive, succeeding not only in Eastern states but throughout many of the Western states. September.

FALL PIPPIN—The old favorite, large, light colored fall variety without which no home orchard is complete.

GRAVENSTEIN—Large, striped, fine quality, one of the best fall sorts.

EARLY HARVEST—Medium pale yellow, tender juicy.

FAMEUSE (Snow)—Medium, deep crimson, flesh white, of best quality.

GOLDEN SWEET—Large, yellow; a superior sweet apple. August to September.

RED ASTRACHAN APPLE—This hardy early variety is well known. A lengthy description is not necessary. Its merits are conceded in nearly every state in this country. Always demands a ready sale at paying prices, if grown for market, and is indispensable for home use. August.



DUCHESS OF OLDENBURG

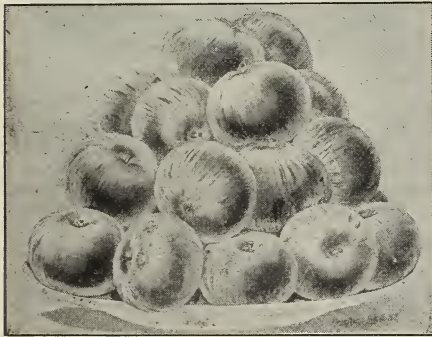
DUCHESS OF OLDENBURG—A large, beautiful, hardy apple; roundish, streaked red and yellow; tender, juicy, pleasant; a kitchen apple of best quality, esteemed by many for dessert. Tree a vigorous, fine grower, and an early and abundant bearer. September. Succeeds well in east and northwest. The hardiest good fall apple. We

WINTER APPLES



YORK IMPERIAL— (Johnson's Fine Winter)— Medium, white, shaded with crimson in the sun, juicy, crisp, mild sub-acid; tree moderately vigorous and productive. November to February. This is a large and beautiful red winter apple, originating in Pennsylvania, where it is a great success. It comes into bearing early and succeeds over a wide extent of country, bearing regular and heavy crops. Its foliage and fruit are free from scab; its skin is yellow covered with bright red and striped; it is a good shipper, bringing the highest price. The peculiarity of **YORK IMPERIAL** is that though beautiful in form it is a little lop-sided. Its bright red color sells the fruit. What orchardists are continually seeking is a red apple the trees of which are productive and thrifty. Red apples always sell well. Here is a bright red apple which will attract any buyer who visits your orchard. This is the leading variety for Pennsylvania. It is very hardy and suited to any part of the country.

NO FARM CROP, on the average, will produce one-fourth as much income per acre as will a good apple orchard.



BEN DAVIS—Large, handsome, striped; a valuable late keeper. December to March. It is hardy and attractive, succeeds wherever apples are grown. The market men like it, and the customers do too, else they would not continue to buy it. There is no apple that has more favor on account of its hardness, productiveness, beauty and endurance in shipping. It is excellent for cooking. There are better apples, but where Ben Davis succeeds one can be sure of success, owing to its regular and heavy bearing.

The price of barreled apples is bound to go up.

The production of apples in the United States in 1896 amounted to 67,000,000 barrels. The crop has steadily decreased every year since 1896 until it amounts to less than 35,000,000 barrels this year, and during this time the apple consuming population of the country has increased over 20 millions. For these reasons the orchard industry is sure to be immensely profitable for those who plant orchards now. You can't afford to hesitate—Buy now.



1 2 3
Photo of
Apple Trees
No. 1, 1st cl., large
No. 2, 1st cl., med
No. 3, 1st cl., smaller

THE CAREFUL DIGGING AND CARE OF TREES AND PACKING IS IMPORTANT.



NORTHERN SPY APPLE

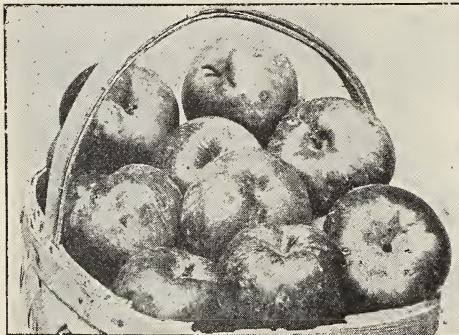
This superior big, red winter apple originated near Rochester, N. Y. It has no superior for beauty and quality. When at its best it is of large size, and is an abundant bearer. The fruit is held on a long, slender stem, which sways in the wind, therefore the Spy does not blow off from the tree. It is a good keeping apple. Season, December to February. This is one of the leading if not the best variety next to Baldwin for New York, Pennsylvania, New Jersey, Indiana, Michigan, and the New England States.

BISMARCK APPLE—An attractive apple in color and shape, the skin being a bright yellow, covered with bright carmine. One feature of the Bismarck which recommends it to many people is that it bears fruit at a very early age. On a transplanted two-year-old standard tree we counted 26 handsome apples. The fruit is of large size, specimens having been grown weighing nearly two pounds each. The flesh is yellow, tender.

APPLE TREES BY MAIL—We offer a good assortment of 25,000 trees by mail post-paid. See list and prices in mail pages at back of this catalog.



STARK—A hardy winter apple; tree a good grower, upright and spreading; good bearer, and much valued as a late keeper and fine market sort; fruit large greenish yellow, shaded and striped with dark red and sprinkled with brown dots; good to best, January to June. The Stark is now recognized as a leading variety for commercial orchards. In New York State and in New England especially it is being planted in large lots.



MCINTOSH RED—A hardy Canadian variety. Medium size, nearly covered with dark red. Flesh white, fine, very tender, juicy and refreshing with attractive quince-like flavor. A good annual bearer. A very hardy variety, fruit of which is very attractive in appearance, of deep red color, good size, the flesh very tender and delicious. It is especially desirable for fancy trade. It comes into bearing young, yielding large crops of good fruit almost annually. 40c each for largest size trees, 30c for medium size, 25c for smaller size.

KING (King of Tompkins Co.)—A red winter apple. When you see in the market apples of extraordinary size, beautiful red in color, specimens that attract the attention of everybody who passes by, you may know that these are the King apple, an appropriate name since it is of the largest size and possessed of the greatest beauty. The market is never fully supplied with this variety, since its size and beauty make it in great demand. Tree a vigorous grower, good bearer and hardy. It is also attractive, is always in great demand in the market. Last year dealers were looking everywhere for Kings. Do not fail to plant King Apple.

READ INSIDE FRONT COVER BEFORE PLACING YOUR ORDER.



WEALTHY—VERY HARDY, EARLY WINTER APPLE.

WEALTHY APPLE—This is a beautiful hardy winter apple, originating in Minnesota. It is gaining in popularity each year on account of beauty and quality, as well as its hardiness. It is productive and an acquisition anywhere. Fruit large, roundish; skin smooth, oily, covered with a dark red. Flesh white, tender, juicy, vinous, sub-acid; quality very good. This is one of the most desirable varieties for Minnesota, Wisconsin, Iowa, Nebraska, as well as the Eastern and Middle states. In season it differs according to locality; in New York and neighboring states its season is December to February and earlier in others.

WILLOW TWIG—Medium size, light yellow, shaded and marbled with dull red and sprinkled with russet dots; flesh yellowish-green, not very tender, pleasant, sub-acid.

BLenheim PIPPIN — (Blenheim Orange)—Large, roundish, deep orange, dark red stripes next sun, often mixed with russet; white flesh, crisp, and juicy. November and February.

QUEBEC SWEET—Medium, yellow, with red cheeks; splendid quality and very hardy; new and valuable. Dec. to March.

STAYMAN'S WINESAP—This is a large reddish apple of superior quality. It has a delightful flavor, and tender flesh. It is a great favorite throughout the west.

JONATHAN — Medium, roundish, yellow, nearly covered with red, fine grained, tender and finely flavored. Tree slender and spreading with light colored shoots. Great apple of the west and northwestern states. Succeeds at East also. Most beautiful of Apples. Season November to April.



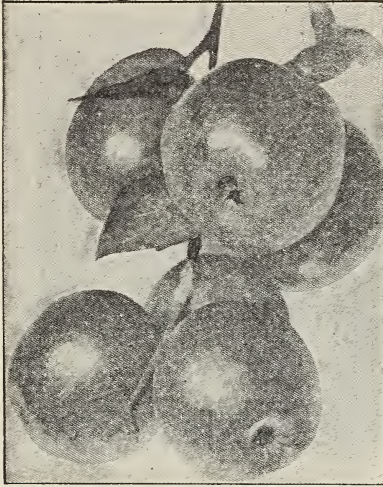
RAMBO—Medium, round and flat, yellowish-white in the shade, streaked and splashed with pale yellow and red in the sun. Oct. to Jan.

WINE SAP—Large, roundish, oblong; deep red color, with a few streaks and a little yellow ground appearing on the shady side; flesh yellow, firm, crisp, with a rich, high flavor; quality very good, and highly esteemed in the South and Southwest. Dec. to May.

GANO—Somewhat resembling Ben Davis, but a great improvement on that variety. Very valuable for the middle west and south, western states and a variety that will help sell the orchard every time. Very productive. Dark red in color.



NORTHWESTERN GREENING—A Wisconsin seedling of great value; has stood the most trying tests and found to be equal to Wealthy in point of hardiness; fruit large, smooth, greenish yellow; flesh fine grained, juicy, firm, good quality. January to April.



BALDWIN—(Red Winter Apple)—What the Bartlett pear is to pears, the Baldwin is to apples for the Eastern and Middle States. While sufficiently hardy for these sections, it will not endure the severe climate of the Northwest. In Western New York the advice used to be in planting a thousand trees, plant nine hundred and ninety-nine Baldwins, and plant the other tree a Baldwin also. No variety yields larger crops or bears shipment better, or is more attractive in color and size and shape, than the Baldwin. It is esteemed as an eating apple, and for cooking. Thousands of barrels of this fruit are exported to England annually. For a commercial orchard it can be relied upon. Large, bright red, crisp, juicy, and rich; tree vigorous, upright, and productive. In New England, New York, Ontario and Michigan, this is one of the most popular and profitable sorts for table or market.

GREEN'S IMPROVED BALDWIN — Brighter and better quality than old Baldwin. Tree more vigorous grower. Discovered by C. A. Green. Flesh tender, delicious. A long keeper.



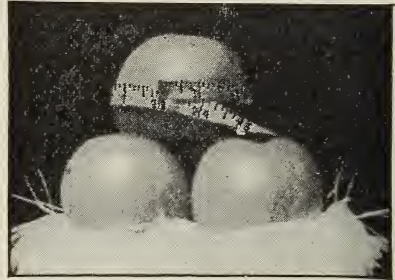
Buy of successful men. They could not have been successful had they not given their patrons a fair deal.

Deal with successful men, they usually have earned their success by fair dealing.

ROXBURY RUSSET—Medium to large. Surface rough, greenish covered with russet. Tree free grower, spreading; a great bearer. Keeps until June.

AMERICAN BLUSH—Here is an apple that is not surpassed the world over for large size, great beauty of color, or for excellent quality. It is an apple that should be growing in every garden and orchard. Fruit large, roundish; color bright red on yellow skin; flesh yellow, with a fine, rich, aromatic flavor, sub-acid. The tree is a vigorous grower, exceedingly productive. Season, November to March.

TOLMAN SWEET—Medium size; color, light yellow; flesh white, firm, rich, and very sweet. Excellent for winter baking. November to April. This is the old favorite, highly prized for baking, etc. Productive, an early bearer, long keeper, bearing shipment well.



GREENING, RHODE ISLAND—Large, green; tender, rich, sub-acid; productive, very popular. December to April. This large and superior winter apple is famous over a large extent of country, more highly prized for cooking and eating than any other. A good keeper. Beautiful yellow in color when ripe, a most abundant yielder, producing immense crops.

Some More Apples

(In limited supply.)

Grimes Golden, Garden Royal, Hyslop Crab, Minkler, North Star, Spitzenburg, Walbridge, Wismers Dessert.

Green's New Collection

8 Apple Trees all Largest Size

2 of the Large Wolf River, 1 of the popular Wealthy, 1 of the Winter York Imperial 1 Pewaukee, 1 Ben Davis, 1 Transcendent Crab and 1 Winter Banana.

Special Price for Spring 1911, \$2.00

(Catalog Price, \$2.50)

DON'T OVERLOOK THE POULTRY OFFER ON LAST INSIDE PAGE OF COVER.



WOLF RIVER BOXED FOR MARKET

WOLF RIVER—Hardy, originating in Wisconsin, and for many years has successfully stood that rigorous climate. Fruit is very large, some specimens weighing 27 ounces; round, flattened, conical, highly colored red. An excellent cooking fruit. We know of no other variety that should bring the orchardist in more money than Wolf River.

PLANT APPLES—Don't hesitate to plant new trees. Every farmer owes it to himself and to his children to set out at least one orchard in his lifetime. How else is the number of apple trees on his farm to be kept good? Order of a nursery, the owner of which you know to be a reliable man, and have them carefully dug in spring and set out in some lot that has been under cultivation for the past year or two.

YELLOW BELLFLOWER—Season winter. Hardy, large size, beautiful golden color, often with red blush; conical in shape. Flesh very tender and fine grained, crisp, juicy, sub-acid, of excellent quality. November to April.

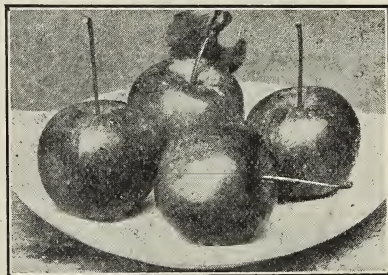
Lima, N. Y., May 10, '09.

Messrs:—Received trees to-day. Largest, most thrifty trees I ever bought. Thank you for 3 extras.
E. B. R.

SUTTON BEAUTY APPLE—Medium to large, roundish; waxen, yellow, striped with deep carmine; flesh white, sub-acid; tender, juicy, good. A long keeper. January to February.

ROME BEAUTY APPLE—This is a hardy, large and handsome apple, almost entirely covered with bright red; of high quality. Dec. to Mar.

HUBBARDSTON—(Nonesuch). Large; striped yellow and red; tender, juicy and fine; strong, good bearer. The Hubbardston has long been a popular early winter apple, growing to the largest size, always of good size. It is a handsome red apple, far superior in quality. Hubbardston has become more popular recently than ever before, since it has been discovered that its leaves have great power to resist attacks of the apple scab fungus.



TRANSPARENT CRAB

TRANSCENDENT CRAB APPLE—This is one of the best of all crab apples, is popular over the entire country. It is perfectly hardy everywhere, and an immense bearer, yielding large crops every year. It is also a rapid grower and often bears fruit three years after planting. The color of this crab apple is as bright as the brightest red rose. As I have been driving by these trees in farmers' yards, filled with fruit, from a distance they seemed to look like red roses. These trees were beautiful objects when thus laden with bright red apples. The fruit of this crab is held in great esteem by housewives for making jelly, pickles and preserves. They can be dried, cooked, canned, or preserved with the skin on, saving a great amount of trouble. September.

IN MAILING SIZE APPLE TREES—See pages we offer American Blush, Baldwin, Banana, Bismarck, Duchess of O, Green's Baldwin, Hubbardstons, King, McIntosh, Tolman Sweet, Wealthy and Yellow Transparent.

Price of these Mailing size trees is, each 15 cents, \$1.40 per 10, all delivered to you postpaid.

PLANT CHERRY TREES FOR BEAUTY AND PROFIT.



Illustration represents a branch of Winter Banana Apple tree, 5 years planted in orchard. Our trees often produce fruits at from two to five years planted. Twenty years ago farmers did not plant orchards because they expected to have to wait 20 years before seeing a crop. Now it is different.

WINTER BANANA— Very handsome; golden yellow, with tint of red on the sunny side; flesh yellowish-white; excellent sub-acid flavor resembling a Banana. January to July. It is of better quality than Swaar, says C. A. Green and Prof. H. E. Van Deman. The tree is vigorous and hardy. It is a great bearer, the fruit is uniformly fair and handsome, the color of pure gold, with red blush. The fruit is large and keeps all winter. It smells and tastes like a banana. Plant the Banana Apple tree. A friend told me that three year old trees bore fruit last fall. Banana is an early fruiting variety. We have been growing Banana apple at Green's fruit farm for many years. The tree is a good grower. No orchardist should feel satisfied without having the Banana in his orchard. Dec. to Apr. 40c for largest size trees, 30c for medium size, 25c for smaller size.

WAGENER (Red Winter Apple)— Wagener is a beautiful winter apple. It is supposed to be a seedling of the Northern Spy. It is of the highest quality, the flesh being crisp, tender and aromatic. It succeeds well

East and West. All successful fruit growers desire such an apple as the Wagener, not only for their own eating, but as an attractive fruit to market at home or abroad. Medium to large; deep red in the sun; flesh firm, sub-acid and excellent. Tree a vigorous, handsome upright grower, and very productive; an excellent variety. C. A. Green.



WAGENER RED WINTER APPLE

A BARGAIN IN APPLES

10 Splendid 2-year Trees for \$1.50

2 Northern Spy, 2 York Imperial,
1 Winter Banana, 2 Wolf River,
2 Wealthy, 1 Yellow Transparent.

10 TREES: First class, 4 feet high and well branched.

Special Bargain Price for 1911 is \$1.50

(Catalogue Price, \$2.00)

THE APPLE IS "KING OF FRUITS" wherever it may be successfully grown. No other fruit succeeds over so wide a range of territory and under such diversified climatic conditions, and no other fruit brings so sure a return to the grower in proportion to time and money expended upon its production. With proper selection of varieties, location of soil, and subsequent intelligent management, there can be but little risk in planting the apple, which is now no longer a luxury but a staple article of food. The apple has few rivals among cultivated fruits. Its mild and pleasant acid is a panacea for many of the ills that the human race is heir to. What fruit can be more pleasant to the palate or more beautiful to the eye than the rich ripe apple when plucked fresh from the tree, or what more luscious and healthful when cooked? Who does not remember with extreme delight the delicious baked apples served with sugar and cream or the apple dumpling or apple pie "that mother used to make?"

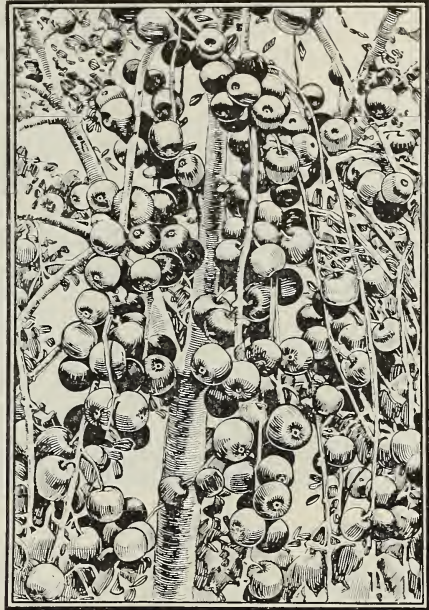
Select an elevated site for any kind of orchard in preference to low ground, unless the low ground is located near a large body of water, which protects it from frost. In planting an apple or other orchard the best method is to mark out the land with an ordinary corn marker, the same as for planting corn: then locate the trees in every fifth row, if that is the distance you desire. In this way your trees will form rows from every point of view, without any trouble in sighting or sticking stakes.

THE STRAWBERRY BED IS AS ATTRACTIVE AS THE BED OF ROSES.



PEWAUKEE—Raised from the seed of Oldenburg. Fruit medium to large, roundish oblate; skin bright yellow, striped and splashed with dark red; flesh white, tender, juicy, sub-acid. Esteemed especially for cold climates, on account of its hardiness. We are often asked to supply a red winter apple that is hardy enough for Iowa, Minnesota, Maine and Vermont. Pewardkee is that variety. Its parentage tells the story. It is like Oldenburg in hardiness. Tree is healthy and long-lived, comes into bearing early and is a reliable cropper, often yielding heavy crops of fruit annually. It is especially valuable for sections where hardiness and productiveness are the chief objects. November to May.

POUND SWEET—A late fall and early winter apple, highly prized for eating or for baking.



MAMMOTH BLACK TWIG—Resembles a large Winesap. Dark red. A very profitable variety to plant for market. It is productive and a long keeper. If a late winter apple is desired you will make no mistake in adding it to your list. Season, Dec. till April.

DWARF APPLES

Dwarf apples commence bearing fruit the second year after planting and as they do not attain as large a size as standard trees, they are especially desirable for village or city gardens. They can be headed low and will give satisfaction as specimen trees. We do not recommend their planting for commercial purposes.

Price of Dwarf Apples,—each 40c, \$3 per 10

These dwarf apple trees are first-class, well branched, but are not so large as standard trees.

The Varieties Offered are: Banana, Fameuse, Twenty Ounce, Baldwin, McIntosh, Wealthy, C. Red June, Red Astrachan, Yellow Transparent, Duchesse of O, Sweet Bough.

Green's Quality Trees.—140,000 apple trees for sale, also 115,000 peach trees, 65,000 pear, 100,000 cherry, 135,000 plum, 50,000 quince trees, 130,000 grape vines, 135,000 currants, 350,000 raspberry, 150,000 ornamental plants, vines and trees. See our prices before buying. Send for illustrated catalog, also Mr. Green's Book on Fruit Growing. \$100,000 capital. Est. 30 years.



DWARF APPLE TREES

OUR PRICES ARE REASONABLE AS CAN BE MADE FOR HIGH CLASS STOCK.

STANDARD PEAR TREES

(On Pear Roots)

Prices of Standard Pears

| | Each | 10 | 100 |
|---|----------|--------|---------|
| First-class Largest Size | 30 cents | \$2.75 | \$24.00 |
| First-class Medium or Orchard Planting Size | 25 " | 2.25 | 20.00 |

All trees carefully graded. The lighter grades are clean, nice trees, with good roots, well branched, for practical purposes equal to the heavier grades.



ANJOU—(*Beurre d'Anjou*) — Standard and Dwarf. A large, handsome pear, buttery and melting, with sprightly, vinous flavor; keeps into mid-winter. Tree a vigorous grower and a good bearer.

Many claim that this is the greatest of late autumn pears. It keeps until January with special care. It is beautiful in shape and color. It is of superior quality. A dessert pear. This is President Marshall P. Wilder's favorite pear. He introduced it here from France.

Green's List of Standard Pears given in order of ripening: Wilder Early, Koonce, Gans, Clapp's Favorite, Bartlett, Louise Bonne, Seckel, Flemish Beauty, Sheldon, Vermont Beauty, Worden Seckel, Anjou, Duchesse, Kieffer, Lawrence.

KIEFFER HARDY WINTER PEAR— The Kieffer has many admirers on account of its great productiveness each year, splendid growth and selling well in market. For the home market it will be a favorite for canning. Some like the fruit for eating out of hand. Everybody admires the tree, which is as good an ornamental tree as ever graced a lawn or dooryard. One fruit grower said: "Owing to the question of quality he thought it would not sell, but the past season buyers ran after him and sought the Kieffer." Its looks sell it. He has 1,600 trees. Those ten years from the bud, were bearing abundantly. The fruit hangs on well, is not liable to be blown off, and is good to handle because it is hard when fit to pick. The Kieffer succeeds best as a standard. We are now learning how to ripen Kieffer. When well ripened it is a good and beautiful pear.



DUCHESS PEAR—(*Angouleme*) — Standard and Dwarf. Trees of the Duchess are great yielders, and being vigorous growers are money makers. What the Bartlett pear is as a standard, the Duchess pear is as a Dwarf. The Duchess tree has a vigorous and healthy growth, and bears uniformly heavy crops of large and attractive fruit. There is no pear in existence which outyields the Duchess. The fruit is prized as a dessert fruit or for cooking.



READ INSIDE FRONT COVER BEFORE PLACING YOUR ORDER.



SCENES IN GREEN'S BARTLETT PEAR ORCHARD

BARTLETT PEARS, KING OF MARKET PEARS

BARTLETT PEAR—Successful as Standard or Dwarf. A veteran fruit grower near Rochester, N. Y., has planted 5,000 Bartlett pear trees. They may be kept in cold storage, and sold when there is no other fruit in the market. They can be grown about as cheap as apples. Dwarf Bartlett pears in C. A. Green's garden only 5 feet high were filled with beautiful specimens. What the Concord is among grapes, the Baldwin among apple, the Crawford among peaches, is the Bartlett among pears. It is the most popular pear, both for home use and market, that the world has ever known. It is buttery and melting, with a rich flavor. The tree is vigorous in growth. Many people remove half of the fruit in August, ripening this for market, thus relieving the tree of its strain and securing larger fruit from that which remains on the tree. As the Bartlett is liable to overbear, nearly half of the fruit should be removed early in the season when about the size of a hickory nut. If this is done and the trees are kept in cultivated soil and well fertilized, they will bear profitable crops of the finest specimens. All pears

should be picked before fully ripe to secure best qualities. Season September.

CLAPP'S FAVORITE PEAR—Standard and Dwarf. Season earlier than Bartlett. This



is without doubt the most productive pear in cultivation. Every limb is a veritable rope of large reddish pears. A splendid pear resembling Bartlett and ripening a few days earlier. A cross between Bartlett and Flemish Beauty;

the tree is hardy and vigorous, either as standard or dwarf. Care should be taken to pick the fruit ten days before it ripens upon the tree. This pear is very large, remarkably beautiful and a prolific bearer. No collection is complete without it. Larger than Bartlett and has a handsome red side. August.

For 30 years I have preached and persuaded people to plant orchards and fruit gardens. Now it is proven that there is no method of occupying the soil so profitably as by planting trees, berry bushes or grapevines.—C. A. GREEN.



We have supplied all classes from John D. Rockefeller and Ex-president Theodore Roosevelt to Bill Nye.

THIS SEASON HAS GIVEN US SOME OF THE FINEST BLOCKS OF NURSERY STOCK WE HAVE EVER GROWN.

DWARF PEAR TREES

Dwarf pears budded on quince roots do not grow high or branch wide, therefore dwarf pear trees are particularly desirable for small gardens. They bear fruit at once after planting. The finest specimens can be grown on dwarf pear trees, therefore it is a good way to test varieties. Dwarf pear trees are attract-

ive in the garden and are worth planting for an ornament alone. All the pears offered as dwarfs we have as standards. Sheldon pear does not grow as dwarf. Chas. Green considers the dwarf pear one of the wonders of nature. Little trees 3 feet high often bear big loads of beautiful fruit.

Prices of Dwarf Pear Trees

| | | | | |
|--|-----------|----------|--------|---------|
| First-class Largest Size | - - - - - | Each | to | 100 |
| First-class Medium Orchard Planting Size | - - - - - | 25 cents | \$1.75 | \$14.00 |
| | | 20 " | 1.50 | 11.00 |

For description of varieties of some dwarf pear see standard pears on previous page.

All trees carefully graded. The lighter grade are clean nice trees with good roots, well branched, for practical purposes equal to the heavier grade.



DUCHESS PEAR—(Duchess d' Angouleme). The Duchess dwarf pear trees give uniformly large crops of pears of marvelous size and good quality. The Duchess is grown more largely than any other, several growers having from three to ten acre orchards, and they find it a profitable fruit. Trees of the Duchess are great yielders, and being vigorous growers are money makers. What the Bartlett pear is as a standard, the Duchess pear is as a Dwarf. The Duchess tree has a vigorous and healthy growth, and bears uniformly heavy crops of large and attractive fruit. There is no pear in existence which outyields the Duchess. The fruit is prized as a desert fruit or for cooking. Like all Dwarf pears, it should have the branches of the last season's growth cut back at least one-half every fall or in the spring before the growth begins.

VERMONT BEAUTY—This beautiful new pear originated in Vermont, thus it can be relied upon for hardiness. It is medium in size. Its color is bright yellow, covered with crimson, making it indeed a beauty. Its flesh is melting and sprightly. It is of the best quality and is remarkably productive.

WORDEN-SECKEL PEAR—This beautiful and delicious pear attracted wide attention when introduced recently. In quality it is rated very high. In size it is much larger than Seckel. It is shaped like Bartlett but is not so large as Bartlett. A tree of this beautiful pear is an object of beauty on the home ground when laden with the beautiful specimens. But it is when you come to eat the fruit that you get the greatest delight.

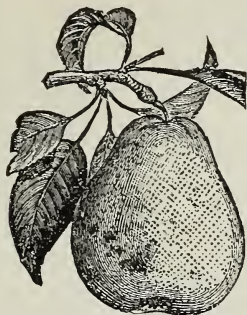
GANS EARLY PEAR—New.—This valuable summer pear was sent us by the originator, who is an old friend and patron, six years ago. This has given us time to fruit the pear at Green's fruit farm and to test its merits. Our C. A. Green is greatly pleased with it. It is a valuable early variety of high quality. Ellwanger & Barry describe it as follows: "A fine early pear, ripening just after Tyson and a week or ten days before Bartlett." A surprise is in store for you in the Gans pear. It is not only surprisingly early but is splendid to eat, and is of good size.



SECKEL PEAR—Standard and Dwarf. The standard of excellence in the pear, small, but of the highest flavor and production. Small Seckels sell better than large, if smooth and fair. Sept.

We have 500,000 Dwarf Pears Trees. For prices and full list see following pages.

READ INSIDE FRONT COVER BEFORE PLACING YOUR ORDER.



FLEMISH BEAUTY, DELICIOUS, PRODUCTIVE.
SEPT, AND OCT.

FLEMISH BEAUTY—A large, beautiful, melting, sweet pear. Tree very hardy, vigorous and fruitful; succeeds well in most parts of the country. Needs an open sunny location on well drained soil for best results. Those who have not eaten Flemish Beauty pears have a rich treat in store. Flesh is tender, juicy and highly flavored.—C. A. Green. Season September and October.

LAWRENCE—Late Winter Pear—Stand-ard and Dwarf.—Size, medium to large, obovate, golden yellow, flesh melting, with a pleasant aromatic flavor. Tree a moderate grower and abundant bearer. I consider this the best long keeping winter pear.—C. A. Green.

Green's Trees Better Than Ever.—The trees we sell are always good because carefully graded, I have just been looking over the apple, pear, peach, plum, quince, cherry and other trees and am proud of them. No matter whether you order the large size, the medium, or the small size, you will get good trees. Take my word for it.—C. A. GREEN.

Green's list of varieties of DWARF PEAR TREES offered, given in the order in which they ripen. For description of varieties see standard pears on preceding pages.

WILDER EARLY, Vermont Beauty,
Gan's Seed Early, Worden Seckel,
CLAPP'S FAVORITE, ANJOU,
BARTLETT, DUCHESS (Angouleme),
SECKEL, KIEFFER,
FLEMISH BEAUTY, LAWRENCE.

Green's Nursery Co.

Trees arrived on the 3rd inst. in First-Class Condition. The best value I ever received.

E. B. York, Pa.

Green's Nursery Co.

Trees received in Good Condition.

H. R., Swan, Ind.



Farmer says to tree agent, "No sir, you can't sell me trees at \$1.00 each, when I can buy better ones of Green's Nursery Co. for 25 cents. Buy through the new way direct of Green the producer and save your money."

WILDER EARLY PEAR—Pleases all because beautiful, red and yellow. It is a good grower. Second, it produces a crop early. Two-year grafts at the nursery and trees four years old produce a lot of fruit. Third, the quality of the fruit is the best. Fourth, one does not have to wait until frost to get it. This is the pear that I discovered in Ohio. I am its godfather. I introduced it years ago. It is of better quality than Bartlett. Season early August. C. A. GREEN.

GREEN'S GARDEN ROW DWARF PEAR TREES—I advise you to plant dwarf pear trees in your gardens and in your village or city lots. These trees occupy but little space. I plant dwarf pear trees three feet apart in a single row through my kitchen garden. There is room for fifty or one hundred trees thus planted in a row. I cut back the new growth severely each year. These trees begin to bear fruit at once. The row of trees are an ornament to the place and attract much attention. I planted in this row many of the leading kinds of pears. I have picked nearly a bushel of pears from a single dwarf tree thus planted. They bear fruit ready to eat nearly every week of summer.

I call this pear row a **DWARF PEAR HEDGE**. These bear fruit at once and delight all who see them, yielding the largest fruit and an abundance of it. They may be planted in place of a fence on line between village lots.—C. A. Green.

Green's Nursery Co.

Everything unpacked in Splendid Condition.

Wm. H., Guy's Mills, Pa.

THE QUALITY OF OUR TREES CANNOT BE EXCELLED.

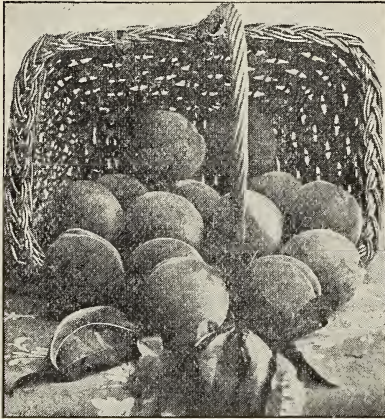
PEACH TREES

Cut off all branches on peach trees when planting them, leaving only a straight trunk two feet high. Don't fail to do this. Plant on elevated land if possible, keep the soil cultivated or mulched.—C. A. Green.

Prices of Peach Trees Except Where Otherwise Noted

| | Each | 10 | 100 |
|---|----------|--------|---------|
| First-class Largest Size - - - - - | 20 cents | \$1.75 | \$15.00 |
| First-class Medium or Orchard Planting Size - - - - - | 15 " | 1.35 | 12.00 |
| First-class Smaller Size, Branched - - - - - | 14 " | 1.25 | 10.00 |

All trees carefully graded. The lighter grades are clean nice trees, with good roots, well branched, for all practical purposes equal to the heavier grades.



CRAWFORD LATE PEACHES

GOLD DROP—Large, good quality, hardy; a profitable market sort; follows Crawford Late.



HILL'S CHILI—Fruit medium size, oblong; skin yellow, shaded with dark red; flesh yellow, very rich and sweet; freestone.

CROSBY FROST-PROOF PEACH—A fine, handsome yellow peach with remarkably small pit,



that bears regular crops north of the peach belt. Quality delicious; season follows quickly after Early Crawford.

Crosby is now so well known that it will be no experiment planting it. It has been planted in nearly all peach-growing states, and is spoken of in the highest terms. Many large orchards of this variety have been planted the past season. The strongest claim for its superiority made over other varieties is the frost-proof character of its fruit buds.

GREENSBORO—A good, very early, white-fleshed, red-cheeked peach, hardy, productive and a favorite at Green's fruit farm. The largest and most beautiful colored of all the early varieties.

CRAWFORD'S LATE—A superb yellow peach, very large, productive, and good; ripens here about the close of the peach season. Season last of September. Not a very late peach—its season is just right. The largest of all the older kinds at Green's fruit farm. It does not overbear, thus does not need thinning. Its quality is superb.

Ten Reasons why you should buy Green's Trees.—1 They are high quality trees. 2 You save agent's profit and expense. 3 You save nearly half your money by buying of Green. 4 Trees are carefully grown, dug and packed and will grow. 5 They are hardy north grown. 6 Rochester, N. Y. trees are known for quality. 7 Trees are sent without delay. 8 Established 30 years. 9 Capital \$100,000. 10 Green has a personal reputation to sustain.

FITZGERALD—Grows similar to Crawford and ripens between Early and Late Crawford; flesh rich, deep golden yellow, with high character; certainly a very fine peach. The tree commences bearing young, is productive, and in Canada and Michigan has proven one of the hardiest.

Does money grow on trees? Yes, also health and contentment.



ELBERTA PEACH--LARGE AND PRODUCTIVE

The best authority on peaches in the United States, planted 60,000 Elberta. Why? Because he well knew its value. This most excellent variety will be called for by the thousand.

Orders should be sent in early while our stock is large.

ELBERTA PEACH—Unsurpassed as a valuable, large, beautiful peach of good quality. The best orchard variety. Valuable for planting in garden. A friend has planted fifteen acres entirely to Elberta. Elberta is hardier in bud than many varieties, therefore a uniform cropper. Elberta is large, yellow, with red cheek, juicy and high flavored, flesh yellow; freestone. Season medium early, following quick upon Early Crawford.



CRAWFORD'S EARLY—A magnificent large yellow peach of good quality. Tree vigorous and prolific; its size, beauty, and productiveness make it one of the most popular varieties. Season beginning of September. This valuable peach has long been a favorite for large size, beauty and quality of fruit. Most people when they buy peaches ask for Crawford's, knowing but little about any other variety. In past years this was the earliest peach, but now much earlier kinds are known, hence it is about mid-season in ripening. Everybody who plants peach trees plants Crawford's Early. It should not be omitted.

GREEN OFFERS TO REPLACE FREE OF CHARGE ANY TREES HE SELLS THAT DO NOT PROVE TRUE TO NAME.



NIAGARA PEACHES—PACKED FOR MARKET

NIAGARA PEACH—A new variety, but fully tested by extensive orchard planting near Rochester, N. Y. It may be called the new Elberta, since in appearance it is like Elberta. It has the desirable qualities of Elberta with none of its defects. One defect of Elberta is that the foliage is liable to be affected with fungus that causes leaf curl, while the foliage of Niagara peach cannot be surpassed in healthfulness and for its ability to resist fungus, being almost of the character of leather. Another reason is that while Elberta is of good fair quality, Niagara is superb in quality. Niagara ripens one week earlier than Elberta, ripening here September 1st. It is free from yellows and leaf curl. Prof. Van Deman says: "I have heard the Niagara peach spoken of in the highest terms. Those who have fruited it are enthusiastic over Niagara peach. I have seen and eaten Niagara. It is of large size, beautiful, and better in quality than Elberta."

PRICES FOR NIAGARA PEACH

| | Each | 10 | 100 |
|---|----------|--------|---------|
| First-class largest size | 30 cents | \$2.50 | \$17.50 |
| First-class medium or orchard planting size | 25 " | 2.00 | 15.00 |
| First-class smaller size branched | 20 " | 1.50 | 12.00 |

THE VARIETIES OF PEACHES WE OFFER RIPEN IN THE FOLLOWING ORDER—Mayflower, Sneed, Carman, Early Rivers, Greensboro, Champion, Mt. Rose, Early Crawford, Niagara, Old Mixon, Crosby, Fitzgerald, Elberta, Hill's Chili, Crawford Late, Golden Drop, Chair's Choice, Beer's Smock.

Green's New Peach Collection

10 First Grade, 5 to 6 feet Trees for \$2.18

1 Niagara, 3 Elberta, 2 Crawford Early, 2 Crawford Late, 1 Hill's Chili, 1 Crosby.

All trees in this collection—First-class, Extra size, 5 to 6 feet high.

Bargain Price, All For \$2.18

(Catalogue Price, \$2.55)



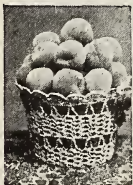
EARLY RIVERS—Large, creamy white, with pink cheek, juicy and melting. August.

Green's Nursery Co.

Peach tree collection arrived all right; will want more in the spring.

E. M., Danielson, Conn.

Ours is a Guaranty Nursery Company.



CHAMPION—Fruit, large, sweet, rich and juicy; skin creamy white, with red cheek, free-stone and a good shipper. Ripens early. Hardy and productive.

Green's Nursery Co.

I received trees all right, am well pleased.

P. B., Dover, Pa.

THE QUALITY OF OUR TREES CANNOT BE EXCELLED.

QUINCE TREES—Fruit of Gold

The Quince is well known and highly esteemed for cooking and preserving. It thrives best in a deep, rich soil, and is benefited by clean, high cultivation. It is improved by the application of manure as a mulch.

It is not difficult to grow quinces in abundance. It pays well to grow quinces. No kind of fruit is more certain to produce crops. If quinces are grown in a single row the trees can be set as near or as far apart as the planter may choose, but in setting an orchard 12 feet apart each way will be found all right, as the distance apart will warrant space for cross-cultivation and harvesting the fruit. The quince is known for its excellence as a canning fruit, for marmalades and jellies. It possesses a flavor peculiar to itself and unknown in all other fruits.

PRICES, ALL VARIETIES

| | Each | 10 | 100 |
|--|----------|--------|---------|
| First-class, 4 to 5 feet high, - - - - - | 35 cents | \$3.00 | \$25.00 |
| First-class, 3 to 4 feet high, - - - - - | 30 " | 2.50 | 20.00 |
| First-class, 2 to 3 feet high, - - - - - | 25 " | 2.00 | 15.00 |



CHAMPION—LARGE AND PROLIFIC

THE BURGEAT QUINCE bears at an early age, producing large crops of exceedingly large and handsome fruit, of a rich golden color. While it ripens soon after the Orange it keeps till midwinter, or it is ready to use at once on maturity. It has proved to be free from leaf blight, the leaves keeping green until killed by frost.

MEECH'S PROLIFIC—Pale, bright orange, with a thin fuzz, fruit large and in shape ranges from nearly apple shape, to short pear shape somewhat furrowed at the top. Very fragrant, good flavor. Bears young. Productive. Supposed to have originated in Connecticut. Midseason.

MISSOURI MAMMOTH—Rich and aromatic, one of the largest and handsomest, bears young, very prolific. Always brings highest prices.

CHAMPION—Fruit very large fair and handsome, surpassing other varieties in this respect; bears abundantly while young; flesh cooks as tender as an apple and without hard spots or cores; flavor delicate imparting an exquisite quince taste and odor to any fruit with which it is cooked, and most excellent for making preserves, jellies, marmalades, etc. The trees are vigorous growers and bear heavy crops of superior fruit. It yields fruit on very young trees soon after planting. The fruit keeps well and ships well. Notice that quince trees are scarce this year all over the country. A good keeper. In a test at Cornell University Agricultural Experiment Station (New York) in 1892-93-94 including Orange, Champion, Rea's and Meech—the Champion averaged the most productive, with Orange a close second. Of American origin. Season late.

Green's New Quince Collection

8 First-class Trees—3 to 4 Feet High
All for \$1.98.

- 3 Orange 3 Champion
- 1 Meech's Prolific
- 1 Missouri Mammoth.

All trees used in this collection, first-class 3 to 4 feet high.

Bargain Price, All for \$1.98
(Catalogue Price \$2.40)



READ INSIDE FRONT COVER BEFORE PLACING YOUR ORDER.



ORANGE QUINCE—VERY PRODUCTIVE

ORANGE QUINCE, Sometimes called **Apple Quince**—Large, roundish, bright golden yellow, cooks tender and is of very excellent flavor. Valuable for preserves or flavoring, very productive, the most popular and extensively cultivated of the old varieties. The surface only moderately fuzzy. Fruit variable in size and shape, but in the ideal or original form is distinctly flattened at both ends, like an apple. Everyone is acquainted with the Orange quince, a good old variety that never disappoints the planter—good for home use and for market, and more largely planted than any other variety. Its large, golden yellow fruit of fine quality is to be seen in more or less quantities in nearly every garden or orchard every season, as it rarely fails to produce a crop.

The quince never suffers from late frosts, as it is so late in blossoming that there is no danger from that source. If the quince trees have been sprayed often enough there is sure to be a paying crop every year, which commends it to the average farmer more than a fruit which only brings a crop one year in three.

It is not difficult to grow quince trees and have an abundance of this fruit. Its price is always a paying one, and no kind of fruit is more certain to produce a full crop. A quince orchard in blossom the first of June is a beautiful sight, and hardly less so are the same trees loaded with their golden fruit in September and October.

Green's Nursery Co.,

Trees and bushes arrived in GOOD CONDITION on Wednesday, November 9th.

J. S. C., Norway, Mass.

COME TO ROCHESTER AND SEE OUR QUALITY TREES.

NUT TREES

Nut culture in the United States is in its infancy. Great strides are being made both in the number of nut trees planted and the improvement in variety and quality.

Most farms contain land that would pay better planted in nut bearing trees than in anything else; the nuts, in many cases, paying better than farm crops or fruit, while the trees are growing into valuable timber.



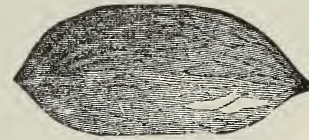
AMERICAN SWEET CHESTNUT—It is a native of the Atlantic coast states, but has come into favor so much that it is planted North and in some of the Western states with success. It succeeds best if transplanted when young. We have several rows that bore a good crop when five years old, and we have no hesitancy in stating that it would be one of our best paying crops had we enough in bearing to make marketing necessary. Price of trees 4 to 5 feet, 50c each, \$4 per 10, 3 to 4 feet, 30c each, \$2.50 per 10, 2 to 3 foot trees, 25c each, \$2 per 10.

ENGLISH OR PERSIAN WALNUT—One of the largest, most delicious, meaty and desirable nuts. Not entirely hardy, but trees are bearing nuts in open ground at Rochester, N. Y. It is safe to plant it as far north as Philadelphia, Pa. Price 3 to 4 feet, 50c each.

Why? that is the question. Why should you buy Green's trees? First: Because of our national reputation of thirty years standing. Second: Because they are the best grown. Third: Because they are true to name. Fourth: They are hardy north grown trees. Fifth: They go safely packed. Sixth: They are honestly graded.

HAZELNUT (Filbert)—This is the sort usually sold in the fruit stores. Price of Hazelnut, strong bushes, 35c each.

PECANS—Are harder than English Walnuts, but will not succeed far north. This nut is very productive and delicious.



Price of Pecans, 2 to 3 foot trees, 35c each.

BLACK WALNUT—The common, well-known Black Walnut, the wood of which is most beautiful and valuable. It is very productive in nuts, which are much liked by many. Price of Black Walnut trees, 4 to 5 feet, 35c each, 3 to 4 feet, 25c each.

BUTTERNUT—A fine native tree producing a large longish nut, which is prized for its sweet, oily, nutritious kernel. Price of Butternut trees, 3 to 4 feet, 35c each, \$3 per 10, 2 to 3 feet 30c each, 2.50 per 10.

JAPAN WALNUT, (Sieboldi)—Perfectly hardy, rapid grower, handsome form, immense leaves; bears young and abundantly; one of the finest ornamental trees. Nuts produced in clusters; resembles Butternut in shape and quality; smaller with smooth and thinner shell. Worthy of extensive planting. Price, 5 to 6 feet 50c each. 4 to 5 feet, 35c each.

Herbert W. Collingwood, editor Rural New Yorker, in the issue of December 25th, 1909, says: "Nut growing is a business which I am sure is to be a great feature of future farming. We are to get a good share of muscle making food from trees. Prices of meat are soaring, and thousands of people find each year that they can keep up their strength and do more and better work when they substitute nuts for meat in part or entirely. I am not trying to argue for vegetarianism but merely stating facts. The demand for nuts is sure to increase. If you plant a nut grove to-day, before it comes in bearing you will find demand ahead of supply. A few men realize what is coming and are interesting themselves in improved varieties of nuts, as hickories, chestnut or pecans."



RASPBERRY BUSHES



THE CUTHBERT RED RASPBERRY. Large, Productive, Attractive. — This is a valuable variety well tested throughout the country. It has given good results both for home use and market. When it was introduced the demand for plants was far beyond the capacity of any one to supply. It marked a new era in raspberry growing. Previous to the Cuthbert, red raspberries were a novelty in the market and sold at from fifteen to twenty-five cents per quart. Cuthbert was largely planted and it succeeded well. The last year or two there has been a great scarcity of red raspberries, and the price has again advanced so that

this year the price opened at twenty cents per quart, and did not go lower than fifteen cents per quart even at Rochester, where red raspberries are largely grown. Cuthbert is a good vigorous grower and possesses vitality necessary for a popular variety. It yields bountifully of large and beautiful bright red berries, which are easily picked and command good prices. No fruit grower can afford to omit planting Cuthbert, and surely no person who has a garden should attempt to get along without red raspberries. Price: 50c per 10, \$1.25 per 100, \$10 per 1,000.



KANSAS BLACK RASPBERRY—Is of the largest size, vigorous, healthy and productive. It is a leading favorite at Green's fruit farm. When I was a boy I delighted to gather the wild black raspberries, but in those days I never met with anything like the Kansas. Fruit is large and excellent in quality. We have fruited it several seasons and find it an excellent variety.—C. A. Green. Price: 50c per 10, \$2 per 100, \$13.50 per 1,000.



RUBY RED RASPBERRY—A large and productive variety which we have been testing for several years. It originated on the Hudson River, N. Y., where it has proved to be a great favorite. This variety has become a great favorite. The fruit stands up well in the box and is very showy. In bush it is hardy and robust. Price, 50c for 10, \$2 per 100.

READ INSIDE FRONT COVER BEFORE PLACING YOUR ORDER.



PLUM FARMER BLACK RASPBERRY

This very large and productive black raspberry has been thoroughly tested in western New York where it is a great favorite for market or home use. It is covered with a grayish bloom, like the bloom on a grape, which makes it very attractive in appearance. It ripens early and quickly. The fruit is of enormously large size, often measuring an inch in diameter. It sells at the highest price. Black raspberries are easily grown and produce fruit in abundance. The berries are delightful when made into pies or preserved. When a child I picked wild berries from the fence corners which my mother made into a jam for my special use, storing it in a broken-nosed china pot. Don't fail to plant the black raspberry. A fruit grower of national reputation says of this variety, "I feel very grateful to you that you introduced the Plum Farmer Raspberry. I bought 100 of you three years ago and have fruited it twice and have an acre of them to fruit this year. It is the greatest raspberry on earth." Price 50c per 10, \$2 per 100, \$15 per 1,000.



CUMBERLAND— The largest of all Black-caps. A healthy, vigorous grower, throwing up stout, stocky well branched canes that produce immense crops of magnificent berries. Fruit very large, firm, quality about the same as Gregg, keeps and ships as well as any of the blacks. It is a profitable market variety. Mid-season. Price, 50c per 10, \$2 per 100, \$15 per 1,000.

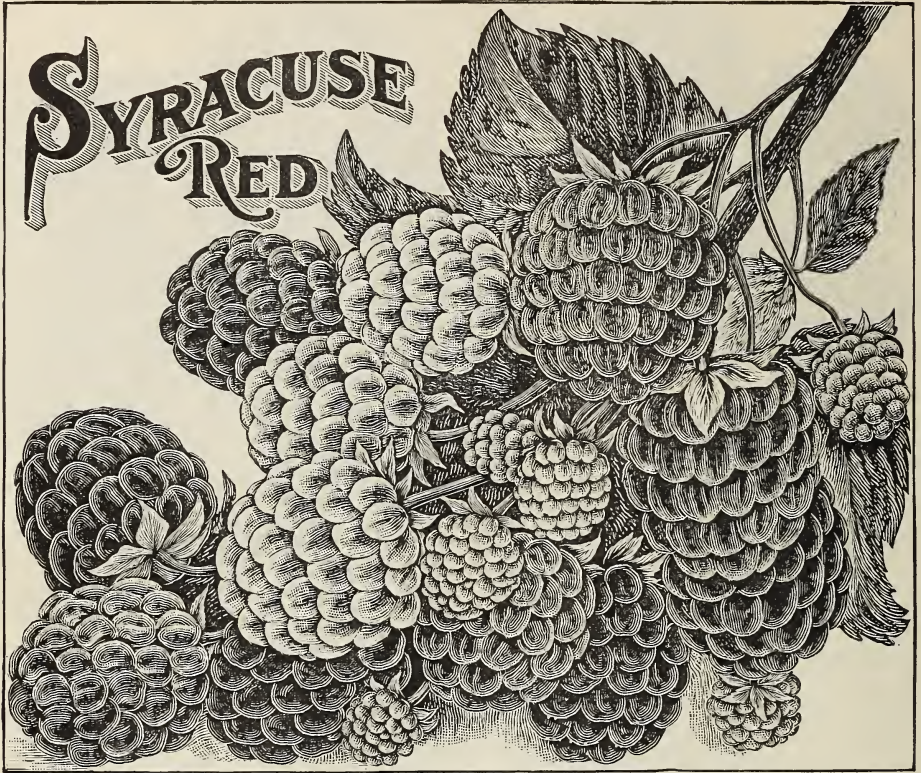


COLUMBIAN RASPBERRY Is a purple variety much resembling Shaffer in growth of bush and fruit. A strong grower, unexcelled for productiveness and desirable for canning. At Green's Fruit Farm nine rows, 150 feet long, yielded 66 bushels. Color of berry purple, like Shaffer. Price, 50c per 10, \$2 per 100, \$15 per 1,000.

RUBY RED RASPBERRY—This is an attractive name for an attractive berry. Think of eating rubies. We have tested this variety at Green's Fruit Farm and find it a valuable variety in every respect, both for market and home use. For a single ruby stone you might have to pay a thousand dollars but you can buy one hundred Ruby Red raspberry plants for \$2, and these plants will really do you better service than the more costly gem. Ruby raspberry originated in the Hudson River valley, N. Y. It has been growing there for many years and the fruit has been marketed in New York City. Do not fail to plant the Ruby.

KING RED RASPBERRY—A beautiful, good early red berry; strong grower, productive and hardy; good market sort. Price, 50c per 10, \$1.50 per 100, \$12 per 1,000.

BUY TREES DIRECT FROM THE PRODUCER AND SAVE HALF YOUR MONEY.



THE SYRACUSE RED RASPBERRY

This is the largest and most productive of all red raspberries. It is very hardy, never requiring protection at Rochester, N. Y., though the thermometer has gone down to twenty degrees below zero. It is also a vigorous grower and continues to fruit during six weeks of summer, from July first to the middle of August.

It does not sucker freely, therefore it has taken us many years to secure a supply of plants. This is greatly in its favor since its vitality goes to the production of fruit and not to useless suckers. The quality is of the highest character. Its color is a beautiful bright crimson; its flesh is firm. It is double the size of Cuthbert and remains much longer in bearing. Do not expect a low price for plants, since it is hard to propagate, multiplying very slowly.

C. A. Green says that this is the greatest and most valuable raspberry the world has ever seen. It is the largest of all bright red raspberries. Its flavor is of the highest grade. It is remarkably attractive and continues in bearing for over a month, but best of all it is perfectly hardy in Rochester during the most severe winters we have known.

Price 30c for each strong well rooted plant, or \$2 for 10 plants, \$13.50 per 100. One big plant given free with every \$5 order.

Green's Nursery Company: We are in receipt of the sample of your new red raspberry named Syracuse, and regard it as most promising, it being large and handsome and of good quality. ELLWANGER & BARRY.

IMPORTANT—Read the premium offers we are making for early orders on the slip enclosed in this catalog. In connection with which we are offering specimen plants of this wonderful berry for experimental purposes, See enclosed slip.

READ INSIDE FRONT COVER BEFORE PLACING YOUR ORDER.

BLACKBERRY BUSHES



ELDORADO BLACKBERRY—The hardest and sweetest blackberry at Green's fruit farm this variety has never winter-killed or failed to produce a full crop of the finest fruit. The vines are very vigorous and hardy. Berries are very large, jet black, borne in large clusters, and ripen well together; are very sweet, melting, pleasing to the taste, have no hard core, and keep eight to ten days. C. A. GREEN.

"The Eldorado is the most promising of the newer hardy blackberries. It appears to be as hardy as Snyder, and is larger and of better quality."—*Ohio Experiment Station.*

"From last year's experience I can say that Eldorado is an immense producer, the berry ripens evenly and is very sweet, medium in size, second early. The yield was much greater than that of any other variety on our grounds last year."—*Geo. C. Butz, Horticulturist State College, Pa.* Price, 60 cents per 10, \$3 per 100, \$20 per 1,000.

Quince Growing Profitable

"The quince is in such great demand in all large cities that it should stimulate farmers and fruit growers to greater efforts to succeed with the trees they set out. Quinces do best in deep, cool soil, though in dryish places they will do fairly well if mulched. Quinces begin to bear in three years, and never fail of a crop. Quinces are as sure bearers as apples or pears. Cold winters do not injure them if their roots, which grow very near the surface of the ground, are covered late in the fall with strawy manure. This mulch should be three or four inches thick, and extend around the trees as far as the branches spread. A small quantity of wood ashes put around the trees against the trunk early in the spring helps to keep borers away.

SNYDER BLACKBERRY—This popular, hardy and profitable blackberry is known everywhere and planted largely. Where other varieties have entirely failed it proved itself entirely hardy. It is also grown in localities where hardness is not the first consideration because of its productiveness and general adaptability to all locations. It is the blackberry for every fruit grower desiring to make a start in blackberries, who has not the means to buy the high-priced varieties. Keep the soil rich with barnyard manure and wood ashes and no one will complain of the size of the Snyder. We have grown it for twenty years and shall continue to plant it, as it gives a good picking where many other varieties have failed. This is the standard early sort for the North and Northwest, and is very popular. This was the first of the hardy kinds that made a sensation over the country. With good culture it is large enough to satisfy all. Like old dog Tray, it is ever faithful. The severest frost does not bite it. Season early; oblong oval in form; quality good. Price, 50 cents per 10, \$2 per 100, \$15 per 1,000.



SNYDER

Average Yield Per Acre

The average yield per acre of a good orchard under intelligent management, without irrigation and with mature trees, is placed as follows:

| | |
|--|-----------|
| Apples, 500 boxes at \$1.50 | \$ 750.00 |
| Pears, 500 boxes at \$1.25 | 625.00 |
| Prunes, 720 crates at \$0.75 | 540.00 |
| Plums, 720 crates at \$0.75 | 540.00 |
| Peaches, 600 crates at \$0.80 | 480.00 |
| Crabs, 720 boxes at \$1.25 | 900.00 |
| Cherries (sour) 19,200 lbs. at 8 cts. | 1,536.00 |
| Cherries (sour) 15,000 lbs. at 20 cts. | 3,000.00 |

The smaller fruits under the above conditions yield as follows:

| | |
|------------------------------------|----------|
| Raspberries, 5,625 qts. at 10 cts. | \$562.50 |
| Strawberries, 5,000 qts. at 8 cts. | 400.00 |
| • Currants, 3,750 qts. at 6 cts. | 225.00 |
| Gooseberries, 3,125 qts. at 6 cts. | 187.50 |

Last year one valley in Oregon sold 60 per cent of its output in apples, roughly speaking 100,000 boxes, to one man for \$375,000.00. As apples are packed 100 in a box these apples sold in lots of 10,000,000 at 3¾ cents apiece and are being retailed today two and three apples for 25 cents.

A SAFE RULE IS "NOT THE CHEAPEST BUT THE BEST."

STRAWBERRY PLANTS



Strawberries grown in double hedge row, from one acre. Jacob Miller near Rochester, N. Y., gathered 5,650 quarts of strawberries notwithstanding a severe drought at the date of ripening.

CORSICAN, biggest berry on earth— This is C. A. Green's favorite strawberry. We have sent it out by the hundred thousands to every postoffice from the Atlantic to the Pacific oceans. It is a great strawberry for many reasons. First, it is the biggest berry; second, it is the brightest and best in color; third, it is a great yielder, and producer; fourth, and most important of all, the foliage is exceedingly vigorous and leathery, resisting fungus, drought, weed and even neglect of cultivation. **Price of Corsican layer plants, 25c per 10, 75c per 100, \$6 per 1,000.**

SENATOR DUNLAP—At Green's fruit farm it has no superior as an early variety. It is an all around, rough and ready producer, sturdy plant and heavy cropper of best quality berries, with clean, healthy foliage which has no tendency to rust. The berries are very large, roundish conical, regular, with slight neck. In color, they are glossy crimson, with the meat firm and solid, deep crimson throughout, and good in quality. **Price of Senator Dunlap, layer plants, 25c per 10, 75c per 100, \$6 per 1,000.**



BRANDYWINE—A very late and firm berry, a good shipper; good canner; a good all around strawberry. This strawberry is being largely planted. In plant it is a luxuriant grower, healthy and very productive; blossom perfect, fruit large, of good form, bright red all over, and good quality. **Price of Brandywine, layer plants, 25c per 10, 75c per 100, \$6 per 1000.**

GREEN'S PINEAPPLE FLAVORED STRAWBERRY—If you want a good flavored strawberry, one of the greatest yielders of large and beautiful fruit, plant Pineapple flavored strawberry. It was introduced by us. We are confident you will be surprised and pleased with this variety when you see it fruiting upon your place. **Price of Green's Pineapple Flavored Strawberry, Layer plants, 25c per 10, 75c per 100, \$6 per 1,000.**

ADDITIONAL VARIETIES—Jessie, an old favorite. Glen Mary, the good medium early. **Price 25c per 10, 75c per 100, \$6 per 1,000.**

Mr. G. H. Adams of Flathead, Montana reports a yield of \$715.00 from one acre and a half of strawberries. These berries come on the market later than any other variety, and, by reason of their superiority bring a higher price even on the local market than any other berry grown in the Northwest.

CURRENT BUSHES

RED CROSS CURRANT is sweet. It is natural to connect sourness with all red currants, since, as a rule, red currants are exceedingly acid, but Red Cross currant is an exception to the ordinary rule, being the sweetest currant ever produced. I know of no more appetizing or healthful dish than a dish of Red Cross currants at the table to be eaten the same as strawberries, or other sweet fruit. This qualification of sweetness and palatableness has not been properly emphasized. In making currant jellies, or in preparing currants in other ways, remember the Red Cross currant requires only half the sugar that many other currants require owing to its natural sweetness and fine flavor.

Prof. Maynard, of Amherst College, Mass., says Red Cross currant averages larger than Fay's Prolific, and is more vigorous. Jacob Moore, the originator, to whom we paid \$1250.00, says it is twice as large as Victoria, will yield twice as much as Cherry, and is of better quality than any of the older varieties. He says that the clusters are longer and that the size of the berry holds out larger to the end of cluster than Fay. C. M. Hooker says that Red Cross currant is larger than Fay's with longer fruit stems. He says the growth is remarkably vigorous, and the plants healthy and free from fungus. Green's receipts from one-half acre Red Cross in 1903, \$537.00; 1904, \$482.88.

Price of Red Cross, strong, 2-year-old bushes 60 cents per 10, \$5.00 per 100, \$45.00 per 1000. Strong 2-year-old, No. 2 bushes, and strong 1-year-old bushes 50 cents per 10, \$4.00 per 100, \$35.00 per 1000.



FAY'S PROLIFIC CURRANT—One of the largest currants, very productive. This has long been a favorite. Price of Fay's strong 2-year old, No. 1 bushes, 60c per 10, \$5 per 100, \$45 per 1000, strong 2-year, No. 2 bushes, 50c per 10, \$4 per 100, \$35 per 1000.



CHAMPION BLACK CURRANT—This is the best of the largest black currants, so popular with our English friends and many others. Price, strong 2-year old, No. 1 bushes, 60c per 10, \$5 per 100, \$45 per 1,000. Strong 2-year old No. 2 bushes, 50c per 10, \$4 per 100, \$35 per 1,000.

There is no San Jose Scale in the locality where Green's Nurseries are located, which is 12 miles southwest of Rochester, N. Y. There are no orchards in that locality infested with this scale.

WHITE GRAPE CURRANT—This is the best of all white currants and it should be planted in every garden owing to the great beauty of the fruit as compared with the other red varieties. Price, 2-year old No. 1 bushes, 60c per 10, \$5 per 100, \$45 per 1,000. Strong 2-year old, No 2 bushes, 50c per 10, \$4 per 100, \$35 per 1,000.

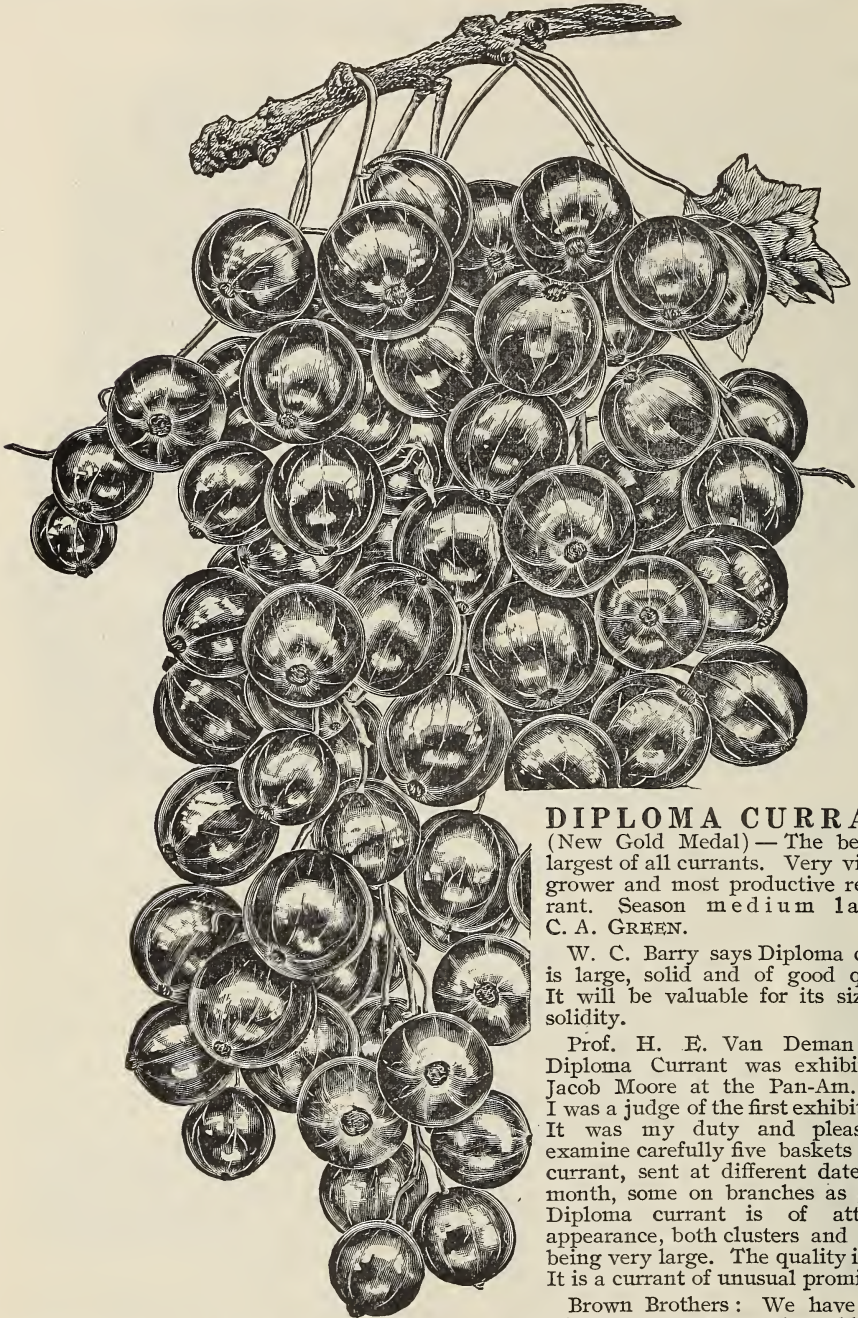


WILDER CURRANT—This is a new variety, very productive and valuable owing to its being the latest currant we have. It sells high when other currants have ripened and are sold. Price, strong 2-year old No. 1 bushes, 60c per 10, \$5 per 100, \$45 per 1,000. Strong, 2-year, No. 2 bushes, 50c per 10, \$4 per 100, \$35 per 1,000.

CHERRY CURRANT—This is the oldest large red currant. Not so vigorous as Red Cross. Price, strong 2-year old, 60c per 10, \$5 per 100, \$45 per 1,000.

VICTORIA—Red, vigorous, productive, Price 2-year, 50c per 10, \$4 per 100.

PERFECTION CURRANT—It is an upright, strong grower, thickly covered with clusters of fruit that reminds one of bunches of grapes, so large and perfect are they. New Price 20c each, \$1.50 per 10.



DIPLOMA CURRANT

(New Gold Medal) — The best and largest of all currants. Very vigorous grower and most productive red currant. Season medium late.—
C. A. GREEN.

W. C. Barry says Diploma currant is large, solid and of good quality. It will be valuable for its size and solidity.

Prof. H. E. Van Deman says: Diploma Currant was exhibited by Jacob Moore at the Pan-Am., 1901. I was a judge of the first exhibit there, It was my duty and pleasure to examine carefully five baskets of this currant, sent at different dates for a month, some on branches as grown. Diploma currant is of attractive appearance, both clusters and berries being very large. The quality is good. It is a currant of unusual promise.

Brown Brothers: We have tested Diploma currant on the table with sugar, and find it of delicious flavor. Considering its extra large size, productiveness and quality, it must become a valuable variety.

Price, 1 year old, 8c each, 60c per 10, 100 for \$5; 2 year old, 10c each, 80c for 10, 100 for \$7.

THERE HAS NEVER BEEN ANY SAN JOSE SCALE FOUND IN OUR NURSERIES.

GOOSEBERRY BUSHES



DOWNING GOOSEBERRY is the largest and best of all native American varieties; This valuable variety originated with Charles Downing, greatest of all pomologists. The value of Downing lies in its large size, fine quality, beautiful appearance, vigorous growth, and freedom from mildew. It is recommended as proof against mildew. Downing is free from spines, of a transparent color, tending to yellow; bush upright, keeping the fruit from the sand. Downing is enormously productive. Since plants of Downing can be produced in America, and plants of foreign varieties cannot, Downing plants can be sold at a lower price, which is another inducement for planting. An acre of Downing can be made to yield \$500. It is unsurpassed for canning. It is easily harvested by stripping the branches with a gloved hand, enabling the picker to gather many bushels in a day. The winnowing of leaves is done by an ordinary fanning mill, the same as beans. They can be shipped from Maine to California like marbles.—C. A. Green. **Price of Downing Gooseberry: 2-year-old bushes, first-class, 12c each, \$1 per 10, \$8 per 100. 1-year strong, well rooted, 8c each, 70c per 10, \$6 per 100.**

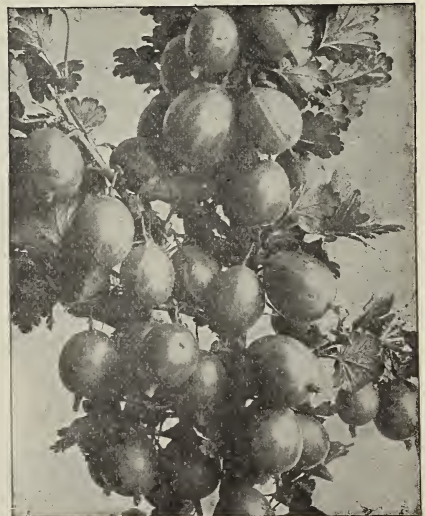
RED JACKET—An American seedling of large size, smooth, prolific and hardy, of best quality. Has been well tested over a wide extent of territory by the side of all the leading varieties, and so far the most free from mildew, both in leaf and fruit, of them all. A wonderful cropper. **Price of Red Jacket, 2 year, 15c each, \$1 per 10, \$8 per 100. 1-year, strong, well rooted, 8c each, 70c per 10, \$6 per 100.**

CHAUTAQUA GOOSEBERRY—Very large, one of the best. Superior quality and very productive. **Price: 20c each, \$1.75 per 10.**

INDUSTRY—Large red. **Price 20c each, \$1.75 per 10.**

Lest You Forget

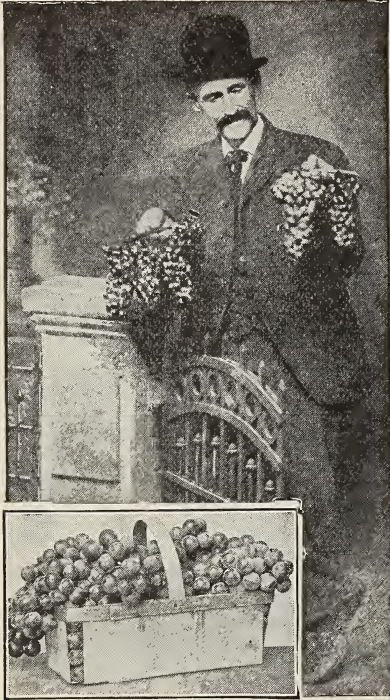
In addition to the 2,000,000 or more Apple, Peach, Cherry, Pear, and Quince trees that we have for sending by Freight and Express, we have 100,000 trees to send by mail, postpaid. An exceptionally large lot of Apple and Peach trees. See last page of this catalog.



RED JACKET

OUR PRICES ARE REASONABLE AS CAN BE MADE FOR HIGH CLASS STOCK.

GRAPE VINES



WORDEN GRAPE—If you fail to plant Worden grape you will make a mistake. When it was first introduced it was claimed to be the same as Concord, since it resembles Concord in many respects. It is, however, much earlier than Concord in ripening and larger in size of berry. Its earliness of ripening is a strong point over Concord. It will not ship, however, so well as Concord, being tender in skin, but for home use I know of no grape of greater value.

Everyone plants it. It is an enormous cropper and its vines are vigorous enough to ripen such crops, but the more fruit a vine carries the later will it ripen its fruit. Worden is ripe and gone before Concord comes in. It is an early black grape, very large in cluster and berry, of good quality. **Price: Strong vines, 2 year, 10c, each, 80c per 10, \$5 per 100, \$35 per 1,000.**

GREEN'S NEW GRAPE VINE BARGAIN

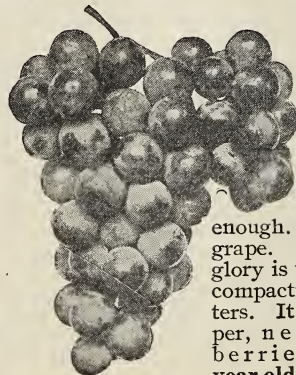
10 VINES FOR 98c.

Our offer is 2 Brighton Early Red; 2 Concord, black; 1 Moore's Early, black; 1 Regal, red; 2 Niagara, white; 1 Worden Black; 1 Green's New Black Grape; all 2 year-old, first-class grape vines for 98 cents.

(Catalogue Price, \$1.35)



DIAMOND WHITE GRAPE—This is our choice in white grapes. It is an excellent variety for those having only a small garden or those desiring to plant for market. In growth of vine it is marvelous and seems adapted to all localities where grapes are grown. It is a diamond among grapes. Extremely hardy; vine a vigorous grower; foliage large and healthy. Very prolific in bearing; cluster large and handsome. **Price: Strong 2-year vines, 15c each, \$1.25 per 10, \$10 per 100.**



THE LUCILE GRAPE—An early red market grape, hardy, healthy and desirable at the north where many varieties will not ripen early enough. It is a sweet grape. Its crowning glory is the the size and compactness of its clusters. It is a good shipper, never drops its berries. **Price for 2-year old vine, 30c each.**

READ INSIDE FRONT COVER BEFORE PLACING YOUR ORDER.



**THE CHAS. A. GREEN
NEW WHITE GRAPE—**

After fruiting this new white grape for several seasons at my Rochester place I am satisfied that it is a valuable variety, a vigorous grower, and an enormous yielder of very large and beautiful clusters of excellent fruit. This variety was sent to me by F. W. Loudon, Janesville,

Wis., the originator of Loudon red raspberry, Jessie Strawberry, Janesville grape and other valuable fruits. He named it the C. A. Green grape, wishing to honor me for having done him a service in introducing Loudon raspberry and the Jessie Strawberry. **Price: Strong 2-year-old vines, 30c each, \$2 per 10.**



NIAGARA GRAPE

**NIAGARA
HARDY WHITE
GRAPE—**

Popular everywhere. Bunch very large and handsome, often shouldered, compact; berries large, round; skin thin, tough, does not crack and carries well; has not much pulp when fully ripe, melting, sweet, with a flavor and aroma peculiarly its own, and

agreeable to most tastes; ripens with Concord, sometimes a little earlier. Vine very vigorous and productive, succeeding well in all sections. Is largely planted by vineyardists. **Price of 2-year-old vines, 10c each, 80c per 10, \$5 per 100, \$35 per 1,000.**



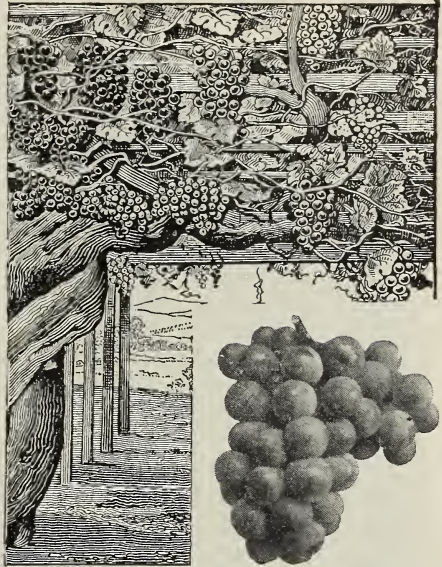
**REGAL LONG KEEP-
ING RED GRAPE—**

If you want the longest keeping grape, one that you can eat during fall and winter months, plant the Regal. Its quality is equal to Catawba or Ulster. Regal grape

keeps well owing to its tough skin and persistent nature, keeping in fine condition late in the season. I believe it will be a good shipper. **Price of 2-year vines, 10c each, 80c per 10, \$5 per 100.**

ADDITIONAL VARIETIES

- Agawam—Large, early, red.
- Hartford—Early, large, black.
- Isabella—Early, large, black.
- Wildner—Large, black, ripens with Concord.



**CONCORD—Monarch of Hardy
Grapes.**

CONCORD GRAPE—This hardy black grape is decidedly the most popular grape in America, and deservedly so. Bunch large, shouldered, compact, berries large, covered with a rich bloom; skin tender, but sufficiently firm to carry well to distant markets; flesh juicy, sweet pulp, tender; vine a strong grower, very hardy, healthy and productive. For general cultivation the most reliable and profitable variety. **Price: 2 year, 10c each, 80c per 10, \$5 per 100, \$35 per 1,000.**



MOORE'S EARLY

—Clusters of medium size; berries large, round, black, with heavy blue bloom. Desirable for market on account of its earliness,

well suited for Canada and northern portions of the United States. **Price: 2 years, 15 cents each, \$1.25 per 10, \$7 per 100.**

ADDITIONAL VARIETIES GRAPES

- Campbell's Early—2 yr. vine 20 cents each.
- Brighton Red Early—best quality.
- Delaware Red Earliest—very sweet and good
- Diamond White—superior quality.
- Wing—long keeper.
- McPike, black, very large—largest in berry, early.
- Eaton, black—black early fine.

Price of all "Additional Varieties" for strong 2-year vines, 15c each, \$1.25 per 10, \$7.50 per 100, \$60 per 1,000.

ASPARAGUS



PALMETTO ASPARAGUS—This is a large growing variety particularly delicious in quality. No home garden can be complete without it. Asparagus is one of the greatest garden delicacies, coming in at a season when there is no competitor.

When once planted this will continue to produce abundantly for life. The plants late in the season are objects of great beauty, and are worth growing for their beauty. Palmetto Asparagus is valuable for its health-giving properties. It is also appetizing and is a rare delicacy for any table. **Price of Palmetto Asparagus: Strong 2 year plants 25c per 10, 75c per 100, \$5 per 1,000.**

CONOVER'S COLOSSAL ASPARAGUS

—No vegetable that is so attractive to the delicate appetite of the epicure as the first delicious cuttings of this early asparagus. No vegetable is more beneficial as an appetizer to persons of sedentary habits. It is difficult to account for its cultivation being neglected. In country gardens it is rarely to be found, although so healthful and nutritious; yet everyone should have an asparagus bed. This good old variety is known everywhere; is of large size, rapid in growth and of good quality. **Price: Large 2 year plants, 25c per 10, 75c per 100, \$5 per 1,000.**

GENESEE ASPARAGUS, (new) — A large, tender and delicious variety. A rapid grower and desirable in every respect. Offered by us now for the first time. **Price: 30c per 10, \$1 per 100, \$6 per 1,000.**

RHUBARB OR PIEPLANT



LINNAEUS RHUBARB

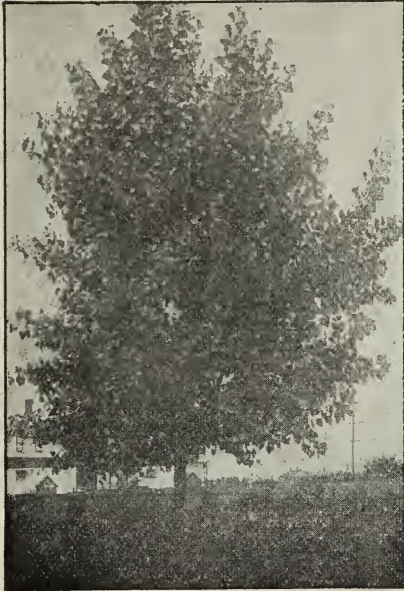
SAGE—Holt's Mammoth)—Price, large bushy plants that have been grown in the nursery row, 10c each, 80c per 10, \$5 per 100.

LINNAEUS RHUBARB—We have millions of well-rooted Rhubarb plants for sale. When spring opens the human system needs an acid. Fruits have not yet supplied these acids, therefore rhubarb, or pieplant, is the only source. Those who eat pieplant pie and sauce freely are greatly benefitted. Do you realize what excellent sauce can be made of rhubarb? Set 12 to 18 inches apart in the row. For ornament alone it pays to plant it. This is the best variety. **Price of strong Pieplant roots, lower than ever before, 10c each, 80c per 10, \$5 per 100.**

HORSE RADISH—Will stand a great deal of hardship and persist in soil year after year. Plant in deep, rich, cool soil. The yield will vary according to the soil and treatment. As high as ten tons have been secured from an acre. **Price: Strong Sets, 25c per 10, 75c per 100, \$5 per 1,000.**

A VERY SLIGHT DIFFERENCE IN FIRST COST MAY MAKE A WORLD OF DIFFERENCE IN RESULTS.

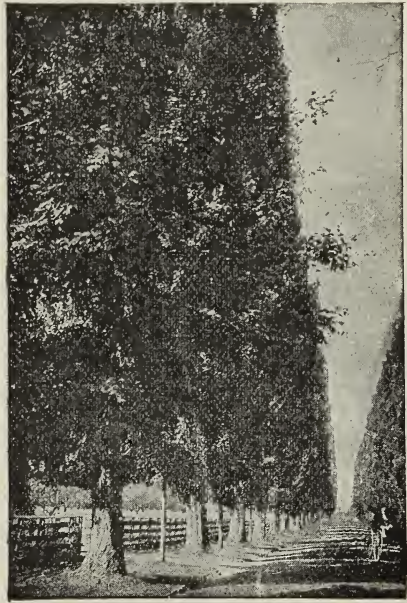
ORNAMENTAL TREES



CAROLINA POPLAR

THE NEW LARGE LEAVED CAROLINA POPLAR takes front rank among the best of poplars. It is one of the most rapid growers among shade trees, frequently growing 8 feet during one season and thus making fine avenues in a few years. Its branches spread just enough to give it a symmetrical, commanding form of elegant appearance. It is very desirable at the roadside, in parks, along rivers and streams for the protection of the banks. *It has advantages over other shade trees because it will grow in any kind of soil, swampy or muck, light or heavy.* Its roots penetrate the hardest soil; it stands all hardships and thrives in places where others fail to live. It is easily started and gives shade in a short time. Don't forget the Carolina Poplar. For a quickly growing shade tree there is no tree which equals the Carolina Poplar. It is broadly pyramidal in form, very robust in growth, with large, glossy, deep green leaves. It stands the smoke and dust of the city streets better than any other shade tree. Very useful for planting as a screen to shut out unattractive buildings.

| Prices: | Each | Per 10 | Per 100 |
|-----------|-------|--------|---------|
| 4-5 ft. | \$.08 | \$.70 | \$ 5.50 |
| 5-6 ft. | .10 | .85 | 7.50 |
| 6-8 ft. | .15 | 1.25 | 10.00 |
| 8-10 ft. | .20 | 1.50 | 12.00 |
| 10-12 ft. | .30 | 2.50 | 15.00 |



LOMBARDY POPLAR

POPLAR, LOMBARDY—This is an old favorite. Well known and remarkable for its erect, rapid growth, and tall, spiral form. Indispensable in landscape gardening, to break the ordinary and monotonous outlines of most other trees.

| Prices : | Each | Per 10 | Per 100 |
|----------|-------|--------|---------|
| 4-5 ft. | \$.15 | \$1.25 | \$10.00 |
| 5-6 ft. | .20 | 1.75 | |
| 8-10 ft. | .30 | 2.50 | 20.00 |

THE CUT-LEAVED WEEPING BIRCH—This noble tree is not only the most popular of weeping trees, but it is decidedly the best. Its tall, slender, yet vigorous growth, graceful, drooping branches, silvery white bark, and delicately cut foliage, present a combination of attractive characteristics rarely met with in a single tree. It thrives in any soil, and is very hardy, needs no protection. As single specimens on the lawn or employed as avenue trees, they are very imposing and handsome. If one ornamental tree only, plant the Cut-Leaved Weeping Birch. Price, \$1.00 each.

PURPLE LEAF BEECH—This blood-leaved tree possesses all the qualifications of an ordinary beech, and in addition has beautiful red leaves which continue red throughout the season. Price, 3 to 4 feet, 75c each.

READ INSIDE FRONT COVER BEFORE PLACING YOUR ORDER.

THE MAPLES



ASH LEAVED MAPLE or BOX ELDER—A fine rapid-growing variety, with handsome, light green foliage and spreading head; very hardy; desirable for street planting and succeeds in many sections where other varieties do not thrive.

| | | |
|-----------------|--------|---------|
| Prices : | Each | Per 100 |
| 5-6 ft. | \$.25 | \$2.00 |
| 6-8 ft. | .40 | 3.00 |
| 8-10 ft. | .50 | 4.00 |

NORWAY MAPLE—This is one of the hardiest ornamental shade trees, and one of the most beautiful. It makes more of a wide spreading tree than the sugar maple. A noble variety both in growth and form. Very popular for shade and ornament. This maple, with its broad, showy leaves has many admirers, and nurserymen generally have quite a difficulty in supplying all demands.

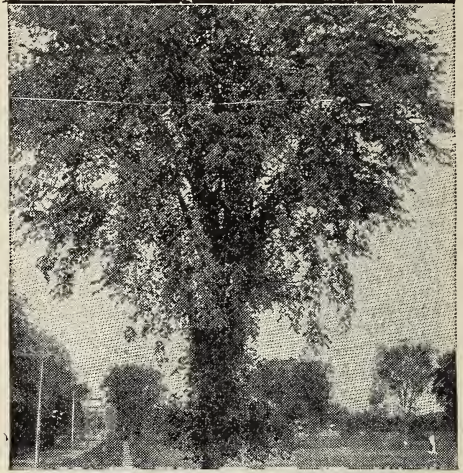
| | | |
|-----------------|--------|--------|
| Prices : | Each | Per 10 |
| 6-8 ft. | \$.60 | \$5.00 |
| 8-10 ft. | .75 | 6.50 |
| 10-12 ft. | 1.00 | |

SUGAR OR ROCK MAPLE—This native tree of ours is a universal favorite for street planting, and desirable everywhere.

| | | |
|----------------|--------|--------|
| Prices: | Each | Per 10 |
| 8-10 ft. | \$.60 | \$5.00 |
| 10-12 ft. | .75 | 6.50 |

SILVER MAPLE—It is beautifully ornamental if given room to develop, and is particularly useful on wide streets and avenues. Foliage is of an attractive silvery tinge. Price, 6 to 8 feet, 50c each, \$4 per 10. Extra large transplanted trees \$1 each.

SCHWEDLERII—(Red Leaved Maple)—Very distinct and attractive foliage, very showy in the early spring and summer. Price, 4 to 5 feet trees, 75c each, 6 to 8 feet trees, \$1 each.



AMERICAN ELM—The most admired of all American trees. It is very attractive in any suitable location, is entirely hardy and easily transplanted. There are more Elm trees planted along our streets and highways than any other one variety. This on account of its dense green foliage, which spreads out from overhead, covering a suitable space of ground in proportion to the size of the tree, which makes it the finest shade tree in the world. We have a large stock of these handsome and most beautiful trees.

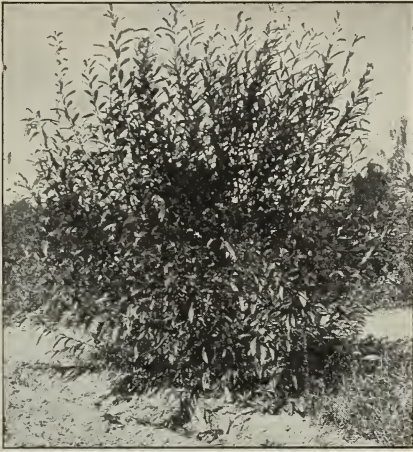
| | | |
|-----------------|--------|--------|
| Prices : | Each | Per 10 |
| 8-10 ft. | \$.50 | \$4.00 |
| 10-12 ft. | .75 | 6.50 |

P. PISSARDI, (Purple Leaved Plum)—There is no hardy foliage tree grown that can compare with the Prunus Pissardi. There is nothing that will please you as well as will foliage trees. It is the most beautiful foliage tree extant. The finest purple-leaved tree. The young branches are a very dark purple; the leaves, when young are lustrous crimson, changing to a dark purple, and retain this.

| | | |
|-----------------|--------|--------|
| Prices : | Each | Per 10 |
| 4-5 ft. | \$.35 | \$3.00 |
| 5-6 ft. | .50 | 4.00 |

WIER'S CUT-LEAVED MAPLE—One of the most remarkable and beautiful trees, with beautiful cut foliage. Price, 6 to 8 feet, 60c each, \$5 per 10.

MONEY GROWS ON TREES ALSO HEALTH AND HAPPINESS.



GOLDEN WILLOW—By all means plant it. Very desirable among the shrubbery when cut back. It also makes a handsome tree. Conspicuous at all seasons, but particularly in the winter on account of its yellow bark.

| | | |
|----------|--------|--------|
| Prices : | Each | Per 10 |
| 2—3 ft. | \$.15 | \$1.25 |
| 4—5 ft. | .25 | 2.00 |

AMERICAN LINDEN OR BASSWOOD—A rapid growing, large sized, beautiful native tree, with very large leaves and fragrant flowers. Price 6 to 8 feet, 50c each.

THORN, DOUBLE WHITE—Has small, double white flowers. A highly ornamental variety, on account of both foliage and flowers. Makes a very striking contrast when planted with the double scarlet. Strong trees. Price 35c each.

PAUL'S DOUBLE SCARLET THORN APPLE—Flowers bright carmine red. Superior to any of its color. Strong trees. Price, 35c each.



FLOWERING THORN



HARDY CATALPA—One of the most showy flowering trees. The flowers have a pleasant fragrance, and a tree in bloom attracts the sense of smell and sight. It makes a beautiful object on the lawn and should be in everyone's dooryard.

This desirable and attractive tree is now widely known. It is planted for shade, also for its blossoms, and on account of its value as a timber tree. Whole tracts of land have been planted in the West for this purpose, as it is a very rapid grower, and found to be very desirable for railroad ties, etc. Prof. Hussman, of the Missouri State Hort. Society, describes it as follows: "Massive in all its proportions, straight and rigid, it looks like a production of the tropical zone, yet it seems to be entirely hardy, with its immense leaves, sometimes lobed, velvety brown when they first appear, and changing into dark green; followed by immense panicles of flowers, containing sometimes between three and four hundred buds and blossoms, contrasting finely with its dark, massive foliage; it may be truly called a "regal tree." Catalpa trees 4 years old and more, planted on our grounds blossom profusely every summer. No one sees them without enquiring what they are, and ending in leaving an order for one or more trees.

| | | |
|----------|--------|--------|
| Prices : | Each | Per 10 |
| 4—5 ft. | \$.25 | \$2.25 |
| 5—6 ft. | .35 | 3.00 |
| 6—7 ft. | .50 | 4.00 |

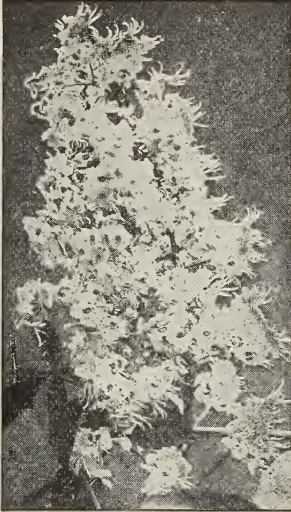
ASH, MOUNTAIN—Bears clusters of bright red berries in autumn, which are conspicuous and handsome. Price, 5 to 6 foot trees, 50c each, 4 to 5 foot trees, 35c each.

DOUBLE FLOWERING PLUM (*Prunus Triloba*)—Hardy, very attractive. A great improvement on the flowering almond. Strong 2 to 3 foot trees, 50c each.

READ INSIDE FRONT COVER BEFORE PLACING YOUR ORDER.

WHITE FLOWERING HORSE CHESTNUT—Beautiful when in bloom.

In early spring these trees are completely covered with flowers. We think there are but few who realize how beautiful are the flowers of the horse chestnut. When autumn comes, the large red nuts cover the ground, to the delight of the children.



| Prices : | Each | Per 10 |
|----------|--------|--------|
| 4—5 ft. | \$.35 | \$3.00 |
| 5—6 ft. | .40 | 3.50 |
| 6—8 ft. | .50 | 4.50 |

RUSSIAN MULBERRY—Desirable for ornament and shade. A favorite on account of its beautiful cut foliage and fruit. Price, 4 to 5 foot trees, 35c each, \$3 per 10.



EUROPEAN WHITE BIRCH—A graceful tree, with silvery bark and slender branches. Erect when young, but after four or five years assumes an elegant drooping habit. Very desirable. Prices, 5 to 6 feet, 50c each; 8 to 10 feet, 60c each.

EVERGREEN TREES

NORWAY SPRUCE, the Leading, the Best Evergreen—*This is the most desirable evergreen for all purposes, and it is the most popular.*



It is extremely hardy. It is desirable for specimens on the lawn, in the front yard, the back yard or anywhere where an evergreen is desired. It is of rapid growth and pyramidal form. When the tree reaches a height of 15 or 20 feet the branches assume a graceful, drooping habit, which is particularly pleasing. This splendid evergreen is not injured by heavy falls of snow, as the branches bend with the weight and present a beautiful sight. It is also the best evergreen for

hedging, more satisfactory in every way than any other hedge plant. An orchard or fruit garden enclosed with an evergreen hedge made of Norway Spruce will in cold states yield double the crop of sound fruit than if left to the bleak and cutting blasts of winter.

Price, selected, 2 to 3 feet, 25c each, \$2.25 per 10. 18 inch to 2 feet, 20c each, \$1.75 per 10. Hedging plants (transplanted) 12 to 18 inches, \$1.25 per 10, \$10 per 100. Extra size 3 to 4 feet, 35c each, \$3 per 10.

THE AMERICAN ARBOR VITAE—is a favorite evergreen. Its growth is not so rampant as to be objectionable, and yet it soon assumes a condition of great beauty, being attractive from the moment it is planted. The foliage is feathery and spray-like, becoming more dense after each pruning with shears. This evergreen seems to adapt itself to all locations but does especially well where the soil is moist. We make a specialty of individual specimens and offer also stock for hedges. Price, selected, 2 to 3 feet, 25c each, \$2.25 per 10, 18 inch to 2 feet, 20c each, \$1.75 per 10; Hedging plants (transplanted) 12 to 18 inches, \$1.25 per 10, \$10 per 100.

CONFIDENCE IS AT THE BOTTOM OF ANY GREAT BUSINESS SUCCESS.

HEDGE PLANTS



CALIFORNIA PRIVET FOR HEDGING—The best of all hardy hedge plants. The City of Rochester, N. Y., is one of the most beautiful in the world. On almost every lot California Privet hedges are planted to divide one lot from another. This Privet hedge is also planted in front of most houses adjacent to the street. The Privet hedge is easily kept at any height desired. In many cases the hedge is not allowed to grow over 2 feet high; in other cases the hedge may grow as high as 4 to 6 feet. It has no thorns, does not sucker from the roots and is not objectionable in any way. This hedge holds its foliage nearly all winter. It is almost an evergreen.

Price of California Privet, heavy 2 year, well branched, \$3.50 per 100, \$30 per 1,000. Extra heavy, 10c each, 80c per 10, \$5 per 100.

The California Privet

California Privet Hedge.— This photograph of a hedge of California Privet, with pear and apple trees and grape vines behind hedge, was taken by C. A. Green at Rochester, N. Y.

A Question Asked

What to plant for a hedge? Our answer is: "California Privet is the best and the most popular of all hedging plants." Millions are planted every season. There are other suitable shrubs and also evergreens. Spirea Van Houttei, Purple Leafed and Thunbergii, Berberry and Japan Quince in shrubs, and Norway Spruce and Am. Arbor Vitae or cedar in evergreens make fine hedges.

THE LIVE-FOREVER ROSE is another grand bush for a hedge row. We have rows hundreds of yards in length. It will not disappoint you.

LIVE-FOREVER ROSE—A hedge row of Live-Forever Roses is a beautiful sight in summer. Imagine a row 500 feet in length containing 500 bushes set 1 foot apart three years ago and each bush showing an average of 1000 buds and blossoms, and you can get some idea of one of our attractive hedge rows last summer. The bush is very hardy, standing our severe winters without any protection. We recommend this with confidence for your hedge. Many of our patrons have planted this hardy sure blooming rose in hundred lots for hedge.

Price of Live-Forever Rose for hedging, 1 year No. 1, \$7 per 100. Extra heavy 2 year, \$1.25 per 10, \$12 per 100.

Green's Nursery Co.,

The plants came in fine Friday and are **JUST SPLENDID**, just like everything that comes from Green's Nursery. G. P.

Willow Springs, Mo.



HEDGE ROW OF LIVE-FOREVER ROSES. (FROM PHOTOGRAPH)

READ INSIDE FRONT COVER BEFORE PLACING YOUR ORDER.

ORNAMENTAL SHRUBS



LILACS IN BLOOM



SPIRÆA VAN HOUTTEI

SPIRÆA

NEW HARDY VARIETIES, LILACS—These are beautiful shrubs, indispensable in every collection, which we offer in double and single blossoms. *In colors we have double and single white, double and single purple, double and single violet, pink and other colors.* Price of New Hardy Lilac Bushes, imported from France, 35c each, \$3.25 per 10.

LILAC OLD HOMESTEAD—There are no flowering plants more highly prized than this beautiful pink lilac. The Old Homestead Lilac is not claimed to be a new variety. It is a choice variety found in an old garden at Green's fruit farm. Large size plants. Price 25c.

LILAC, PURPLE—The well-known variety, one of the best. A good grower; flowers and young wood fragrant; purple. Price, large size plants, 25c each.

LILAC, WHITE—A very desirable contrast to the purple; those who have one should have the other. Price, large size plants, 25c.

DWARF BARBERRY, B. Thunbergii—Very attractive, neat and dense in growth, yet graceful because of its drooping branches. The yellow flowers are followed by scarlet fruits borne in dense profusion on the long stems and clinging through most of the winter; the leaves color to scarlet and gold in autumn. Price 25c each, for hedge \$9 per 50.

NOTE: Our shrubs are extra large and strong, will bloom the same year planted.

SPIRÆA—Elegant low shrubs of easy culture, very hardy and indispensable in every shrubbery. Very satisfactory for single or clumping effect and planted more largely than any other flowering shrub. We make a specialty of the following varieties and grow them by the thousand. 25c each.

Spiræa Van Houttei—The grandest of all the Spiræas; it is a beautiful ornament of the lawn at any season, but when in flower it is a complete fountain of white bloom, the foliage hardly showing. *This is undoubtedly the best of the spiræas.* The accompanying cut is a fair one, and shows it in blossom. The blossoms are white. 25c each.

Spiræa Callosa Rosea—Has large panicles of deep rosy blossoms; grows freely and blooms nearly all summer; fine, 25c each.

Spiræa Prunifolia (Bridal Wreath)—Blooms in May with pure white double flowers. Makes showy specimen plants for lawn. 25c each.

Spiræa Anthony Waterer—Makes a dwarf bush 15 to 18 inches high, covered from spring till late in the fall with large heads of crimson flowers. Perfectly hardy. 25c each.

Spiræa Bumalda—A spreading, low bush, with dark leaves brightened by corymbs of pretty, light pink flowers in May, and at intervals all summer. 25c each.

PURPLE LEAVED BARBERRY—A beautiful shrub with violet purple foliage; showy, small yellow flowers, and beautiful red berries in pendulous clusters. Price, strong bushes, 25c each.

READ INSIDE FRONT COVER BEFORE PLACING YOUR ORDER.

HARDY HYDRANGEA (*Paniculata Grandiflora*)—We urge our friends to plant the Hydrangea. There is nothing that will gratify you, who love beautiful objects more. Plant it for the following reasons: It is hardy, enduring the severest winters out doors without protection. It is easily transplanted, not one in a thousand dying; *it never fails to blossom the first year planted*; no matter how small the plant, it immediately buds out in great profusion of flowers, many of them as large as the head of a full grown child. It is thus attractive immediately after planting, gaining in beauty for ten or twenty years if properly pruned. It remains in blossom the longest of any flower, a single blossom remaining in beauty for a month. When the specimens first open they are a greenish white, later they turn to a pure white, and still later to a delicate pink. The Hydrangea should be cut back at least one-half of each season's growth in order to get the largest specimens. If the branches of the bush are cut down nearly to the ground, the most beautiful specimens will be produced the same season. It can be grown in tree form. To get the best results, make the soil rich, it will grow anywhere and on any soil. There is no plant on earth that I can recommend with greater confidence than the Hydrangea. —C. A. GREEN. Price 25c each, extra large, 35c each.

FORSYTHIA VIRIDISSIMA (Golden Bell)—From China. A fine, hardy shrub of spreading habits and straggling growth. It comes into bloom early, and flowers are of a bright orange-yellow. Price, large, 25c.

MOCK ORANGE—Flowers white, deliciously perfumed. Derives its name owing to flowers resembling orange blossoms; a delightful substitute for that noble flower. Price, 25c each.

JAPAN QUINCE (*Cydonia Japonica*)—A popular and very valuable showy shrub. They are hardy and enduring, and form a beautiful bush or hedge. The prevailing and most desirable color, we think, is the deep crimson. Blossoms in early spring, and produces considerable fruit, which increases its value as an ornamental. Price, strong, 25c.



Plant a few Japan Quinces John.



A BED OF HARDY HYDRANGEA, PURPLE FRINGE OR SMOKE TREE—Should be in all collections. Unlike any other flowering shrubs, blossoms resemble a cloud of smoke. Much admired and conspicuous in flower, and also pretty on account of its foliage in autumn. Price, strong, 25c.

WHITE FRINGE—A popular and much admired shrub of moderate growth and rounded form, with large, dark green, glossy leaves, and long drooping panicles of beautiful white fringe-like flowers. Price, strong plants, 25c each.

TREE CRANBERRY—This is an attractive and profitable shrub. Hardy as a rock and most desirable, combining the ornamental with the useful. The blossoms are white, single and very showy and its beautiful fruit clings to the branches in winter, making it very desirable for single specimen or for the shrubbery. Price, large bushes, 25c each.

GOLDEN-LEAFED ELDER—The best of all the colored shrubs. A plant of this bush in a bed, or a border, or on the lawn, is a conspicuous feature, the foliage being as yellow as gold. Price strong plants, 25c each.

Millbrooks, N. Y., Nov. 3, 1909

Dear Sir—Nursery stock received in excellent condition. I must say it was the biggest bargain I ever struck. In future my orders go to Green's Nursery Co.—F. H.

Chas. A. Green's selection of 50 large, ready to bloom shrubs, for \$7.50.

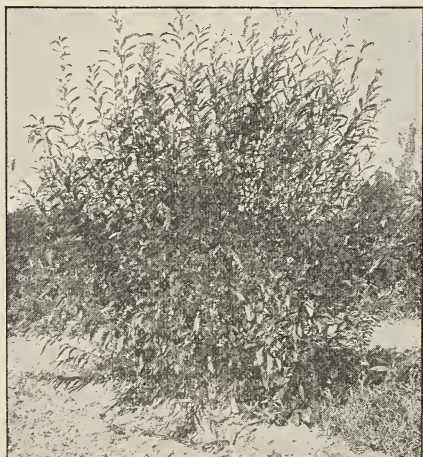


DEUTZIA—Fine companion shrubs for the Spiraea and Weigela. Good in every way; a delight to all. Hardy, easy to cultivate and sure bloomers. We grow them in large lots and make a specialty of the described varieties.

DEUTZIA CRENATA ROSEA—Double flowered—A variety having double flowers, which are white tinged with pink, and which are produced in racemes from 4 to 5 inches long in great profusion.

DEUTZIA CANDIDA WHITE—White flowering, very attractive and should be included in every collection

Prices of the above varieties of Deutzias, large-flowering bushes, 25c each.



GOLDEN WILLOW

GOLDEN WILLOW—Very desirable for the shrubbery on account of its showy golden bark. Price bushy plants 2 to 3 ft. 15c each.



ALTHEA (Rose of Sharon)—One of the most showy flowering shrubs; strong, erect growing, with large bell-shaped, double flowers of striking color, borne abundantly in August and September, when most other shrubs are out of bloom. *We have pink and white, purple, white, red and pink blossoming*, all of which are imported and grafted, blossoms being double and fine in every way. One good quality of the Altheas is that they keep their foliage fresh well into autumn, when the leaves of many other shrubs are dried up or blighted by fungus. They are very hardy, easily cultivated, and will bloom until their growth is cut short by frost. Grown in standard form they make good specimens, 8 to 10 feet high, resembling small flowering trees; planted thickly they are popular for flowering hedges, as they will endure considerable pruning. This should be given in winter. Price, heavily branched, well-rooted bushes, 2½ to 4 feet, 25c each.

Surprise Collection in Shrubs

13 Flowering and Foliage Shrubs and Vines

2 Althea, 2 Spireas, 2 Deutzias,
1 Weigela, 1 Purple Berberry,
1 Golden Elder, 1 Snowball, 1 Yucca,
1 Golden Willow, 1 Clematis Paniculata.
13 Extra Strong Specimens ready for
blooming 1st season.

Bargain Price for Spring 1911 is \$1.60
(Catalogue Price, \$3.00)

PRIVET (California)—Very popular both, for single specimen and for hedging. Vigorous in growth, thick glossy foliage and nearly evergreen. Blossoms white (See Hedge Plants for price of hedging.) Single specimens selected, 3 to 4 feet each. 15c each, \$1.25 per 10.

READ INSIDE FRONT COVER BEFORE PLACING YOUR ORDER.



WEIGELA IN BLOOM

THE WEIGELA—The Weigela is one of the most charming shrubs in cultivation; it cannot be too highly recommended; the flowers are large trumpet shaped and are borne in great profusion. We offer them in colors, red, pink, and white. **Price, strong plants 25c.**

Let everyone who owns a home in city or country plant intelligently a number of ornamental trees and shrubbery, and thus increase the value of the property 25 to 50 per cent.

**Surprise Collection in Shrubs
3 Flowering and Foliage Shrubs and Vines**

- 2 Althea, 2 Spireas, 2 Deutzias,
- 1 Weigela, 1 Purple Berberry,
- 1 Golden Elder, 1 Snowball, 1 Yucca,
- 1 Golden Willow 1 Clematis Paniculata
- 3 Extra Strong Specimens ready for blooming 1st season.

Bargain Price for Spring 1911 is \$1.60.
(Catalogue Price, \$3.00)



SNOWBALL (Viburnum)—A well known favorite shrub, with globular clusters of white flowers the latter part of May. This good old early and sure flowering shrub is planted perhaps more extensively than any other. It is found in every collection in the gardens of the rich as well as the poor. We have a fine lot of plants, strong 2 to 3 feet. **Price 25c each.**

We Make a Specialty of growing Deutzia, Spirea Weigela, Japan Quince and other leading hardy shrubs. The plants we offer are large, ready for blooming the first season. We will make special prices on large orders. If you want 50 to 100 shrubs write for prices.



**BEAUTIFY THE HOME GROUNDS,
SEE HOW IT WORKS.**

Have you seen a dwelling, the grounds of which are barren of trees and vines? Have you seen a farm upon which there is no orchard, or fruit bearing trees? Have you seen these homes and farms after they



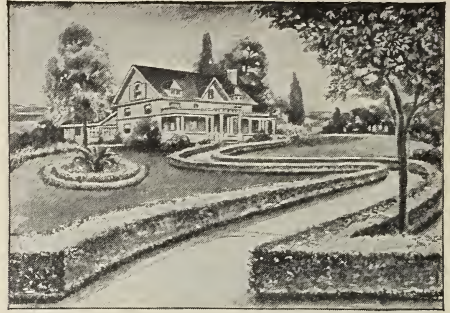
have been beautified and made fruitful and profitable by the judicious planting of ornamental trees and shrubs? Bring these two pictures to your mind, one representing a house about which no trees or shrubs have been planted, the other showing the same place after planting. The first is a picture of desolation. The planting of one tree would relieve the barren appearance. The planting of fruit trees in the rear, and a few shrubs and trees in the front yard, or at one side, would create a transformation. Plant plum or peach trees to beautify a barren home and supply fruit for the table. Duty to your family urges you to plant.

DEAL WITH SUCCESSFUL MEN, THEY USUALLY HAVE EARNED THEIR SUCCESS BY FAIR DEALING.



YUCCA FILAMENTOSA—I know of no flowering plant more showy. It looks like the Century plant, and is mistaken for many for the Century plant. It is a gorgeous grower and endures the most severe winters without protection. It blossoms year after year, for a lifetime, as shown in the above illustration, and its blossoms look like white lily blossoms. They are pure white, and remain a long time in bloom. Sometimes the blossom stalk is thrown up to the height of 6 feet, making one of the most showy and conspicuous flowering plants in existence. The Yucca is a rare plant, is easily transplanted and should be in every selection. **Price of strong plants, 25c each, \$2 per 10.**

PERENNIAL PHLOX—Finest autumn flowers. Plant roots of the Phlox in fall or spring and those roots will continue to send up flower shoots each spring for twenty years. The bunch of roots however, will after four or five years become so large as to be improved by dividing the cluster of roots, making, perhaps, a dozen transplants from one cluster, planting these out in a new bed, or a new row. Nothing transplants easier and there is no flower grown which can be produced in abundance with so little trouble. I plant the Phlox in a row along the border of the roadway, in a bed made up of several rows, or in a round bed on the lawn, or in single clumps here and there among the flower beds, or in the shrubbery. Every one who visits Mr. Green's place admires these beautiful plants of Phlox. It is hardy and succeeds everywhere, and on all soils. We offer three colors: pink, white and red. **Price of strong plants, 15c each, \$1.25 per 10, \$12 per 100.**



Showing a driveway with California Privet on either side trimmed low. Note the beautiful effect.

C. A. Green says, do not fail to plant California Privet hedge plants. It is not so rank a grower as locust or spruce, and does not spread so wide or occupy so much ground as many hedges. Therefore it is popular in city and village planted on the streets or between small building lots.

Another grower says: "Of all ornamental hedge-plants this is the most highly prized. If cut to the ground one or two years after planting, it makes a very thick hedge right from the bottom, sending up many strong shoots. The leaves are a rich green, and will remain on the plants up to Christmas, and if they are a little sheltered they will keep green almost all winter. This is especially the case if the hedge has attained some age and has frequently been trimmed. Though it is a strong grower, it can be kept to a low size by frequent trimming." See prices of California Privet next page.

Shrubs for Hedge. Strong bushes, Spirea Van Houttei, Purple Barberry, Thunbergii, Berberry, Japan Quince. **Price, \$1.75 per 10, \$15 per 100.**

Evergreens—Norway Spruce and Am. Arbor Vitae. **Price, strong transplanted 12 to 18 inch, \$1.25 per 10, \$10 per 100.**

DAHLIAS—A good assortment in colors. **Price 15c each, \$1.25 per 10.**

When making out your order for border and shrubbery plants, don't overlook the new blue flower, the Anchusa (The Heavenly Blue Flower). It is very attractive.

East McKeesport, Pa., Apr. 10, 1909.

Dear Sir:—I am very much pleased with the plants, they are simply grand. They are really the nicest I ever saw and I am surprised at the nice large trees for the small price. Yours very truly, Mrs. H. B.

Lewes, Del., Nov. 16, 1909.

Sirs:—The case of trees came to hand the 13th inst., and are as fine as I ever saw in my life. Yours truly, T. C. W.

READ INSIDE FRONT COVER BEFORE PLACING YOUR ORDER.



A CLUMP OF PAEONIES

PAEONIES—(*The Queen of Spring Flowers*)—The Paeony can be planted in the spring or fall. Very popular everywhere, being very hardy in root and more easily cultivated than many flowering plants. No one need pine after the tender Rhododendron when Paeonies can be had in abundance and in a variety of colors. Their flowers are very lasting; some of them are finely finished and exquisitely colored. Plant in deep, rich, well prepared soil, covering the bulbs but an inch or two. Do not expect too much of them the first year. We plant them in beds and in clumps. They rival the rose in beauty and fragrance. **Price and colors of Paeonies—Red, pink, and pink and white, best varieties, strong roots, (that will flower the coming summer) 25c each, \$2 per 10.**

OSTRICH PLUME—The New Ornamental Grass (*Eulalia*) (*Gracillima Univittata*).—Is nearly as beautiful as ostrich plumes when in blossom. Plumes will keep for months or years, drying like feathers. Valuable for decoration for mantle piece, side board or piano. This is one of the most attractive ornaments to any garden or lawn, and one of the most easily secured and least expensive. There is nothing in all nature more graceful than the stalks of this beautiful ornament. C. A. Green introduces this with fine effect in various places on his Rochester place. A single plant in a flower bed, or on a lawn, is an object which will attract attention. It is most attractive planted in a row bordering the drive, or to separate one part of the yard from another, or among flowers and shrubs. Is easily transplanted and grows rapidly. One plant at the end of the year's growth may be divided to make twelve or more strong plants. **Price, strong plants, 10c. each, 80c per 10.**

BEAUTIFUL STRIPED GRASS—Fine for borders or clumps. **Price 10c per set, 90c per 10.**

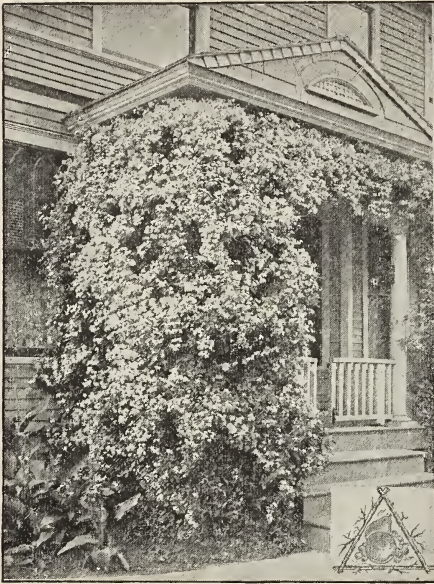
GLADIOLUS—Do not fail to plant from 12 to 100 bulbs. This is one of the best for summer flowering. It is a flower anyone can grow. **Price of bulbs, fine mixed colors, 15c per 6, 20c per 10, \$1.10 per 100.**

ANCHUSA—(*The Heavenly-Blue-Flower*)—This is one of the very choicest hardy border plants, "*The Heavenly-Blue-Flower*," as it has been aptly called. Its flowers are a **pure blue** in color, like the lovely Gentian. It is very hardy, growing from 4 to 6 feet with good culture. It is fully covered with pure blue flowers an inch in diameter, which, in the evening, are of a surpassing beauty and loveliness. It flowers in May, lasting about two months in bloom. We offer strong blooming plants. **Price 35c each, \$3 per 10, by mail or express.**

GOLDEN GLOW—This beautiful yellow blooming perennial plant was unknown to most people until a recent date. I know of no flowering plant that has attained such great popularity in so short a time. In order to be popular, a plant must be able to thrive in all localities without nursing and this is just what Golden Glow does. Like Phlox it stands out doors all winter. The foliage, which dies back every fall, springs up vigorously in the spring and grows to the height of 5 or 6 feet. It you do not wish the plants to grow so high, nip them off when they are a foot or two high, and they will branch out lower and be more desirable for certain localities. The blossoms appear in large numbers, hundreds of them on a single plant, and they succeed one another and remain long in bloom, giving the place an animated and brilliant appearance. Don't fail to plant Golden Glow. **Price of strong plants 5c each, 40c per 10.**

HAVE YOU TESTED THE QUALITY OF GREEN'S TREES? IF NOT GIVE THEM A TRIAL. THEY SPEAK FOR THEMSELVES.

FLOWERING VINES



CLEMATIS PANICULATA IN BLOSSOM

CLEMATIS PANICULATA—This beautiful Clematis fills a long felt want for a rapid growing, hardy, easy-to-transplant flowering vine. Its beauty is indescribable. It commences to grow very early in the spring and blooms profusely in the late fall. If you can plant only one vine, plant the Clematis Paniculata. *A remarkably beautiful climbing plant.* Flowers pure white, star-shaped, about one inch in diameter, borne in large clusters; will last several days as cut flowers, retaining their freshness and fragrance. Plant is a strong, quick grower, has broad, healthy foliage, seldom attacked by insects. CHAS. A. GREEN'S choice for an easily transplanted sure blooming plant. **Price 25c each.**

AMPELOPSIS VEITCHII (Boston Ivy)—This is one of the most beautiful ivies and the latest acquisition. It is a rapid grower and clings tenaciously to brick or stone walls, requiring no artificial fastening or training. A single vine may in time cover the entire side of a house or church. It is hardy and thrives almost everywhere. **Price, strong vines, 35c each.**

HALL'S JAPAN HONEYSUCKLE—An almost evergreen honeysuckle of the greatest value, being hardy and of strong growth. The flowers are fragrant, of a pure white changing to yellow, resembling a Cape Jasmine in odor, and produced in profusion from May to December. **Price, strong plants, 25c each.**

Flowering Vines and Ornamental Creepers fill a position that no other plant can. They add a charm to the building and make it look homelike. We frequently see houses covered with Ampelopsis V., (Boston Ivy,) and others, where the Wistaria, the Clematis and the Honeysuckle running on trellises of wire, lath, are strung or kept in place with tacks, and these homes always look cheerful. Again, we note others that look more like a prison, not a vine to change the monotony of the building material. Not only are vines suitable for climbing up and over buildings, but they are desirable for garden ornamentation. A good trellis for the Clematis is made by nailing lath to a stake, forming this trellis any shape desired. A more natural effect is produced by planting the vines near fences or the like and letting them ramble as they please.

CLEMATIS CLIMBERS

The Clematis ranks highest as a flowering climber, needing little care and one that gives noble returns for a little outlay. It is a rapid climber and profuse in blossoms. We have counted 100 blossoms at one time on a 3-year old plant. It is hardy, and nowhere can be found a greater number of blossoms to the amount of vine than in the Clematis. We plant them in the open garden and fix a trellis for them to and near the buildings, or near the base of the trees as practicable, allowing them to run amongst the branches and everywhere. They are exceedingly beautiful.

JACKMANNI CLEMATIS—Flowers, when fully expanded, are from 4 to 6 inches in diameter; intense violet purple, with a rich velvety appearance. **Price of strong plants 35c each.**

HENRYI CLEMATIS—A vigorous grower and free bloomer, producing its large, pure white flowers constantly during the summer and early autumn. **Price 35c each.**

TRUMPET FLOWER—A grand old favorite, hardy climbing plant, with large, trumpet shaped, scarlet blossoms in August. Fine for covering old tree stumps and verandas, or for growing as single specimens. It is very hardy and will thrive everywhere. **Price 25c, strong 2-year vines.**

CHINESE WISTARIA—One of the most elegant and rapid growing of all climbing plants; attains an immense size, growing at the rate of 15 to 20 feet in a season. Has long pendulous clusters of pale blue flowers in May and June and in autumn. **Price 25c each.**

VIRGINIA CREEPER (American Ivy)—The good hardy native American Ivy. Fine for trellises where a rapid growing vine is needed. **Price 25c each.**

READ INSIDE FRONT COVER BEFORE PLACING YOUR ORDER.

ROSE BUSHES



MAGNA CHARTA IS C. A. GREEN'S FAVORITE OF THE OLDER ROSES

How easily one can succeed with the Rose. It will grow almost anywhere and under all circumstances. Although it has its likes and dislikes, it will not fail to blossom anywhere. It is easily transplanted and commences to blossom a few weeks after planting. It is true that they give best results if planted in a rich loamy soil. We protect ours during the winter by bending the bushes to the earth and cover up the whole bush with strawy litter or covering the bush with evergreens. Pruning should not be overlooked. Roses will blossom from June to November with management. For an abundance of early blossoms prune the bush immediately spring opens, and for late flowering the bush should be severely pruned after the June flowering.

Two Year Bushes Ready for Immediate Effect—The bushes we send by express or freight are two year old (mostly on their own roots) and bushes that will blossom the first season. The bushes we send by mail are one year strong or two year nice and ninety-nine out of every hundred should blossom the first season planted.

The Climbing Roses, with their mass of blossoms, are beautiful indeed for trellises, fences, etc. No garden should be without two or three.

Roses by Mail—Please note that we make a specialty of small size hardy out door roses by mail, postpaid, at prices offered. These roses are cut back so as to facilitate the mailing, but are cut back only as they should be for best results when planting.

Out Door Grown Roses—Every rose bush that we send out has been grown out doors and is hardy. They are all dormant; do not expect roses from us with the foliage on like small indoor roses received from florists. These hardy roses as grown by us are the ones to plant in the flower bed or beside the house or along the walks. They need no petting and do not need taking up and storing in cellar in winter.

Prices of Roses, general variety, (see following pages.) Each 25c. Special varieties, Frau Karl Druschki White and Soliel d'Or Yellow, each 35c.



The Beautiful Soliel d' Or

The New Yellow Rose

SOLIEL D'OR—Yellow is the one desirable color that has been lacking in hardy Roses. This new Rose is the result of a cross between Persian Yellow and Antoine Ducher. It is a fine, strong grower, producing superb, conical-shaped buds varying from gold and orange-yellow to reddish gold shaded with nasturtium-red. The flower is very full, large and globular, the petals in the center being well incurved. It is a robust, vigorous grower, with brownish wood and beautiful bright green foliage. It was awarded first prize at the Paris Exposition and numerous gold medals throughout Europe. Price, strong No. 1 bushes, 35c each \$3 per 10.

We have 20,000 Rose bushes to send by mail in addition to the heavy bushes that we send by express and freight.

READ INSIDE FRONT COVER BEFORE PLACING YOUR ORDER.



THE SNOW QUEEN ROSE

FRAU KARL DRÜSCHKI (Snow Queen)—The finest white Hybrid Perpetual Rose, with large, full flowers of splendid form. It is marvelous in its beauty in half open bud and in the pure white of the full opened bloom. In a bed of a dozen plants there is seldom a day during the summer when blooms cannot be cut, and during the spring and fall it blooms in profusion. It is the ideal rose for cemetery planting both North and South. It holds its foliage well and is healthy and vigorous and in hardiness it equals any of the Hybrid Perpetuals. **Strong No. 1 bushes, 35c each, \$3 per 10. Strong bushes by mail 25c each.**

COQUETTE DES ALPS—White, slightly shaded with carmine; strong grower and a great favorite. This variety is very valuable; it continues to give a profusion of blossoms for weeks after general varieties have finished. **Price 25c each, \$2 per 10.**

COQUETTE DES BLANCHES—Pure white, of fine form. Free bloomer and a very fine rose for late blossoms. **25c each, \$2 per 10.**

ANNE DE DIESBACH—Carmine, a beautiful shade; very large. A superior garden sort; fragrant; one of the hardiest. **Price, 25c, \$2 per 10.**

PAUL NEYRON—Flower of immense size, one of the largest roses grown and one of the finest; color deep shining rose, very fresh and pretty. A strong grower and remarkably free bloomer. **Price, 25c each, \$2 per 10.**

BALTIMORE BELLE (Climber)—Pale blush, large, very double; one of the best climbers. **Price, 25c each, \$2 per 10.**

MAMAN COCHET—An excellent pink Rose, with rich, healthy foliage and large flowers on long, straight stems; color, deep rosy pink, the inner side of petals silvery rose. Equally valuable for pot culture or outdoor planting. **Price, 25c each, \$2 per 10.**

MOSS ROSES—Red, pink and white. Much admired for the beautiful, moss-like covering of the buds. **Price, 25c each, \$2 per 10.**

BABY RAMBLER—(Everblooming) A dwarf (Bush) form of Crimson Rambler, and furthermore, Ever-blooming. Will bloom continuously throughout the summer if planted out-of-doors. Has the same bright crimson color as the climbing Crimson Rambler, and blooms in clusters of 20 to 40 flowers at one time on plants of fair size. "Baby Rambler" is one of the best Roses for bedding. **Price strong No. 1 bushes, 25c each, \$2 per 10.** So sure are we that this is the rose that will more than please every one who plants it, that we have grown an extra nice lot. In addition to those for Express orders, we have a select lot for the mail orders.

*Baby Rambler suitable for outdoor or indoor blooming*

IN PLANTING FOR THE HOME DO NOT OMIT THE SMALL FRUITS.



MAGNA CHARTA—A general favorite, prized on account of its strong, upright growth, and bright, healthy foliage, as well as for its magnificent bloom. The color is beautiful pink, suffused with carmine. This rose is one of Chas. A. Green's favorites. It is surprising the wealth of blossoms produced by one bush, and a bed or a row of this fine, hardy rose is a delight for an unusually long season. We recommend it as the best large pink rose. Price, 25c each, \$2 per 10.

Chas. A. Green plants **MAGNA CHARTA** Roses as single specimens, in beds, and in rows. It is a grand hardy rose, more prolific in blossom than any other rose.

CLIO, vig.—Flowers large, in clusters, of fine globular form, flesh-color shaded in the center with rosy pink; growth vigorous; handsome foliage. One of the best roses. Price, 25c each, \$2 per 10.

LADY GAY—(Climber)—A seedling of **Crimson Rambler** which it closely resembles in habit of bloom and vigor of growth. The flowers (in large loose clusters) are of a delicate cherry-pink color, fading to soft tinted white. The effect of a plant in full bloom with the combination of soft white flowers, cherry-pink buds and deep green of the foliage is indeed charming. It is perfectly hardy and unsurpassed for climbing work. Price, 25c each, \$2 per 10.

WHITE RAMBLER—Resembles **Crimson Rambler** in foliage and habit; flowers pure white. Price, 25c each, \$2 per 10.

GENERAL JACQUEMINOT—The leading rose. Deep, brilliant shaded crimson, with large petals, globular with high center. A well known favorite; one of the best and planted by all who plant roses. Price, 25c each, \$2 per 10.

LA FRANCE—Delicate silvery rose; very large, full flowers, with a faint tea odor.



CRIMSON RAMBLER—A climbing rose of unusual attractions. Very hardy, having withstood to degrees below zero without covering. Vigorous in growth, having grown 8 to 10 feet in a season. Produces a profusion of blossoms, having been known to produce 300 blossoms on one shoot. The **Crimson Rambler** is especially adapted for covering trellises. Its clustered form, its brilliancy, the abundance of its bloom, and the great length of time the flowers remain on the plant without falling or losing their brilliancy, are qualities which make this rose an assured favorite. Price of bushes, 2 years, 25c each, \$2 per 10.

DOROTHY PERKINS—(Climber) A most valuable Pink Rambler Rose. Of a most beautiful shell-pink color. In hardiness, nothing more could be desired. Flowers are very double, of large size, usually two inches across and borne in loose clusters. The petals are very prettily rolled back and crinkled; the buds are remarkably handsome, being pointed in shape and of just right size for the buttonhole. Price 25c each, \$2 per 10.

LIVE-FOREVER-ROSE—A bug-proof, hardy Rose. If you have tried growing roses and failed, try once more, for we have discovered a rose which lives long and is proof against insects and diseases. It is as easy to grow this variety as lilacs, corn or sunflowers. Price, 15c each, \$1.25 per 10 for large 2 year bushes; one year old for **Rose Hedge**, \$7 per 100. This rose is especially good for a hedge.

ADDITIONAL ROSES—John Keynes, Pink Rambler, Yellow Rambler. Price, 25c each.

Price of roses, (unless otherwise priced) 25c each, \$2 per 10.

PLANTS AND TREES BY MAIL POST PAID

(Safe Delivery Guaranteed)

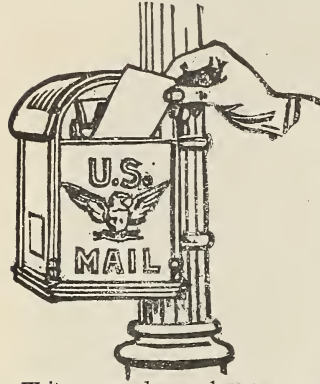
We Make a Specialty of Mailing the fruit trees, plants, etc. named on this and the following pages.

Safe Delivery.—It is especially to meet the needs of those who live in distant states that our mail order department has been planned. We have so satisfactorily served our patrons during the past twenty-five years, that this line of patronage is rapidly increasing.

No Matter How Distant your home may be from Rochester, we can serve you well.

We Have Thousands of well pleased patrons who have received through the mail, postage paid by Green, trees and plants from Green's nurseries.

In The Pacific Coast States and in every distant state where trees can be grown will be found orchards and gardens planted with trees from our nurseries that were received by mail.



Write your order, enclose money order or registered currency, address it to Green's Nursery Co., Rochester, N. Y. Drop it in the box, we do the rest.

send your order and specify this when sending it, and the order will be filled accordingly (except perhaps strawberries, which go later.) Send 10c for sample tree and you will want more.

Our Specialty this spring is **APPLE TREES** and **PEACH TREES**, Syracuse Red Raspberry and Diploma Red Currant.

THOUSANDS OF APPLE TREES BY MAIL POST PAID

Varieties of Apples Offered by Mail

Grown especially for our mail trade, fine one-year-old-trees. The varieties we offer are:—American Blush, Winter Banana, Baldwin, Bismarck, Green's Baldwin, McIntosh Red, Tolman Sweet, Wealthy, Duchess of Oldenburg, Hubbardston, King, Yellow Transparent. Descriptions of these found in preceding pages.

Prices (postpaid) for all varieties 15c each, \$1.40 per 10, \$12 per 100.

These thrifty, well-rooted one-year-old apple trees have been popular with our patrons for many years, especially with those who live far away or who are not near railroads or

express offices who desire the trees to come by mail without any charge to the buyer for safe delivery at their door.

RASPBERRIES

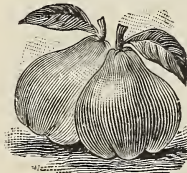


SYRACUSE—Largest and best quality red berry in the world. See cover for colored plate. Price, 30c each, \$2.10 per 10.

CUTHBERT AND RUBY, Red—5c each, 40c per 10, \$1.50 per 100.

KANSAS AND PLUM FARMER, black, 5c each, 40c per 10.

COLUMBIA PURPLE, 5c each, 50c per 10.



QUINCE TREES—

Champion and Orange. Nice one year trees.

Price 25 cents each, \$2.25 per 10.

PEAR TREES

Ade Anjou, Bartlett, (Std.), Clapp's Favorite, Flemish Beauty. Price strong 1 year trees, 20c each, \$1.80 per 10.

READ INSIDE FRONT COVER BEFORE PLACING YOUR ORDER.

THOUSANDS OF PEACH TREES BY MAIL POST PAID

PEACH TREES come into bearing earlier than any other fruit tree. With average success the planter should have fruit the second season after planting. Nothing in the line of trees that we have sent by mail has given more satisfaction than the superior, clean little Junebudded or one year peach trees.

Grown Especially for our mail orders, first class in every particular, clean, healthy and strong. We have mailed these in years past to valleys of the western mountains, and other distant sections, where their success has led to the planting of thousands of acres of trees in regions where it was not known that peaches could be grown.

Testimonials by the hundred have been sent us by those who have received our peach trees through the mails.

We Offer Six Varieties.—Carman, Champion, Crawford Late, Elberta, Greensboro and Niagara. For full description of all these selected varieties see pages devoted to peaches in this catalogue. (See we offer Niagara peach this spring by mail.)

Price of these peach trees (postpaid), 12c each, \$1.10 per 10, \$10 per 100. **Price of Niagara** 15c each, \$1.25 per 10, \$12.50 per 100.

CURRENTS BY MAIL

Currants are one of the most profitable fruits to grow.



DIPLOMA CURRANT

A new, late red currant, largest of any variety that I have seen.—C. A. GREEN.

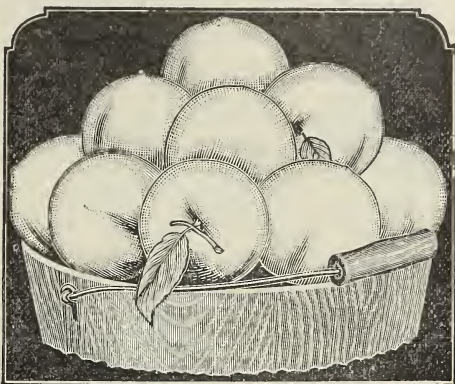
A Commission House in McKeesport, Pa. wrote us: "We have seen your Diploma Currants in Pittsburg. We can use 30 bushels per day of Diploma."

Price of Diploma Currant, strong bushes 10c each, 90c per 10.

RED CROSS CURRANT

We grow it by the acre for home and market. We marketed \$1,085.00 worth off less than 2,000 bushes in three seasons. **Price of Red Cross Currant, 6c each, 55c per 10, \$4.50 per 100 postpaid.**

GOOSEBERRIES—Downing 12 cents, \$1 per 10. Industry 20 cents each.



A CHOICE DISH OF PEACHES

The Elberta Peach

ELBERTA is the Leading Market Variety, the Money Making Variety. It is a yellow peach, large to very large in size, the peach that dealers like to handle, a variety that never lacks a buyer. It is a very valuable, handsome peach, desirable for home or market. Every planter plants some Elberta. Orchardists plant this variety in hundred and thousand lots. One large peach grower planted 60,000 Elberta trees in one season. **Price of Elberta, 12c each, \$1.10 per 10, \$10 per 100 postpaid.**



GRAPES

We have a car load of nice grapevines of the following varieties, that can be sent by mail:—Worden, Niagara, Brighton, Concord, Delaware, and Moore's Early. **Price of strong vines, 12c each, \$1 per 10.**

Moqui, Colorado, Nov. 8, 1910.

Gentlemen:—

The \$60.00 order you filled for us by mail is *simply fine*. Please find enclosed \$5.00 for ———. Will need more of your stock by mail in the spring.

Very truly, R. B.

CHERRIES



We have anticipated the needs of our mail order patrons by providing as nice a lot of 1 year cherries as ever grew. The varieties are Bing, Green's Tartarian, Gov. Wood, Lambert, Napoleon, Royal Ann, Early Richmond, Montmorency and English Morello.

PRICE OF CHERRIES—(postpaid by Green)—20 cents each, \$1.80 per 10.

STRAWBERRY PLANTS BY MAIL—

We mail many thousands every season. We guarantee arrival in good condition, Corsican Brandywine and Pineapple flavored. Price of Strawberry Plants, 25c per 10, \$1.30 per 100.



NUTS—Black Walnuts and Butternuts. Price, postpaid by us, 10c each, 90c per 10.

ROSE BUSHES BY MAIL



ROSES—The roses we offer are hardy, outdoor grown. We offer a varied assortment. Red, Pink, White. For full description of roses see the rose pages in this catalogue. These are good ones. *Frau Karl Druschki, Baby Rambler, Crimson Rambler,*

Dorothy Perkins, Paul Neyron. We would mail you ten in assorted colors, postpaid for \$1.80. Price of roses by mail 20c each, *Soliel d'or, the New Yellow rose,* 40c each postpaid by Green.

GLADIOLUS BULBS—The best of summer flowering bulbs. It is a flower anyone can grow. There is no limit to the range of color—pink, scarlet, yellow, crimson, white and a host of other colors. **Gladiolus Bulbs, mixed colors, Price, 15c per 5, 25c per 10, \$1 per 100.**



GOLDEN GLOW—A beautiful vigorous blooming perennial, which thrives in all localities. Price of Golden Glow, strong plants, 5c each, 40c per 100.

PERENNIAL PHLOX.—A delightful flower for one and all. You plant the roots and it blooms forever after, forming large clumps which can be separated and replanted. Price of Perennial Phlox, assorted colors, 15c each, \$1.35 per 10.



ASPARAGUS—We send many thousand by mail—never knew of a root being spoiled on way to the buyer. Everyone who has a garden should have an asparagus bed. **Palmetto and Conover's Colossal,** 20c per 10, 95c. per 100.

RHUBARB—10c each, 90c per 10.

HORSE RADISH—Sets 15c per 10, 60c per 100.

SAGE (Holt's Mammoth)—Strong plants. 10c each, 90c per 10.

AMPELOPSIS VEITCHI, Price 35c each.

HALL'S HONEYSUCKLE, 25c each.

LIVE FOR EVER ROSE—Hardy and Bug Proof. See page 61 of this catalogue for description and illustration and price for bushes by express or freight. This beats the world for a rose that needs no nursing yet blooms marvelously every year. **Special Price, 1-year, strong, 10c each, 90c per 10.**



Illustration shows Live-Forever Rose grown as a hedge.

CLEMATIS *Paniculata, White,* 25c each; *Clematis Henryii White,* and *Clematis Jackmanni, Purple,* Price, 35c each.

Our Spring 1911 Wonder Mail Collection

All by mail postpaid, for \$2.35

8 APPLES: 2 Banana, 1 Baldwin, 1 Duchesse, 1 Red Astrachan, 1 Wealthy, 1 American Blush, 1 Yellow Transparent.
8 PEACHES: 4 Elberta, 1 Greensboro, 1 Late Crawford, 1 Champion, 1 Carman.
2 Diploma New Red Currant,
2 Syracuse New Red Raspberry.
1 Baby Rambler Rose, 1 Live-Forever Rose, 1 Clematis *Paniculata.*

ALL FOR \$2.35 (Catalogue Price, \$3.70)

OUR FRUIT GROWERS' SUPPLY DEPARTMENT

OFFERS EVERYTHING NEEDED FOR PLANTING, GROWING AND MARKETING FRUIT, INCLUDING

| | | | | | |
|----------------|---------------|-----------------|-----------------|----------|----------------|
| Sprayers | Slicers | Pruning Knives | Grape Vine | Plows | Weeders |
| Spray Supplies | Bleachers | Pruning Saws | Holders | Harrows | Cultivators |
| Baskets | Evaporators | Pruning Hooks | Grafting Knives | Rollers | Horse Muzzles |
| Barrel Headers | Fruit Dryers | Snagging Shears | Grafting Wax | Planters | Garden tools |
| Fruit Parers | Fruit Presses | Budding Knives | Raffia | Seeders | Catalogue Free |

YOU SAVE at least one profit by ordering from us and avoid the trouble of ordering from more than one place. We have everything needed and the best.

SHIPPING POINTS—We can, by special arrangement, ship direct from the factory or from various distributing points throughout the country and save freight and express charges, and are thereby able to make lower prices than others do.

Order trees, plants and vines, tools and supplies, sprayers and spray materials all from us and save time and money, and get the best.



IMPROVED BRASS BARREL SPRAY PUMP

Best barrel spray pump on earth for the price. Its valves seats, plunger and cylinder are of brass. It is very powerful. Agitator stirs solution making it impossible to clog. Nothing to get out of order. Complete for use.

Price: of above pump No. 5 with Mechanical Agitator, \$7.98.

Send for complete Spray Pump Catalogue.

LIME SULPHUR SPRAY

All leading orchardists now use Lime Sulphur. It is the best spray on market for peaches and many use it for apple trees.

In summer use 20 gallons of water, one gallon of Lime Sulphur. In winter use half as much water. We sell Lion Brand—the strongest and best of all Lime Sulphur.

1 gallon 98 cents, 5 gallons \$3.98, 50 gallon barrel \$13.00.



A MAN WITH A MASTER'S PLANT SETTER

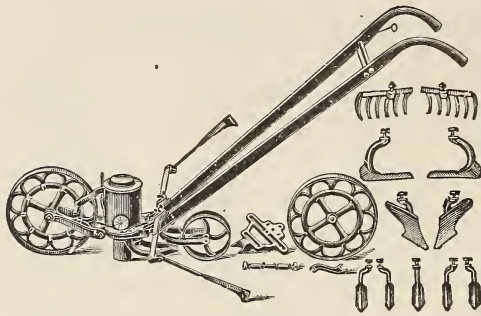


will set, water and fertilize 10,000 plants per day. Every plant securely set by absorption—nature's own way. No blanks—no stooping—no more lame backs—no damage by cut worms.

Don't wait for showers, but keep the planter going every day, and by using water or liquid fertilizer you will produce the best stand of plants seen for many a day.

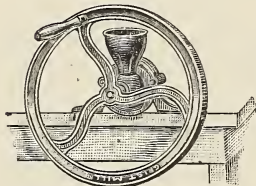
For cabbage, tomatoes, tobacco, celery, etc.

Price \$3.75 F. O. B. at Rochester, N. Y.



MATTHEUS NEW UNIVERSAL GARDEN TOOL

Illustration shows complete implement with all the attachments furnished including seeder, hoe, cultivator, plow, rake and marker No. 19. Each implement is entirely separate from the other and the only parts used in each, the wheels and handles, are changed from one frame to another by only two bolts. Price, boxed, No. 19, \$10.00. Send for complete catalogue of New Universal Tools.



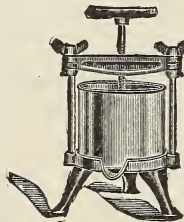
GREEN'S FAMILY GRIST MILL

Make your own graham flour, corn meal for table use and cracked corn for poultry. Weight 23 pounds. Hand wheel 19-2 in. in diameter.

Price, ready to use, \$2.45.

A well-made and handsome Press for making cider, wines, jellies, lard, syrups, etc. It has double curbs.

SENSIBLE WINE AND CIDER PRESS



PRICE :

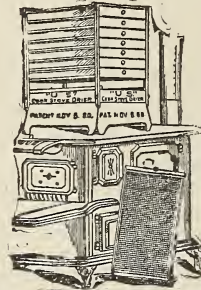
- Four quart curbs, weight 30 lbs. - \$2.95
- Ten quart curbs, weight 40 lbs. - \$3.95

GREEN'S HOME EVAPORATORS

Thoroughly tested and approved. Latest, cheapest, best. Can be used on any stove, dries any fruit.

Price \$6.00

Special Price, \$4.75



READ THIS : To introduce our Home Evaporator and our No. 1 Parer, Corer, and Slicer (see description at top of page), we offer both for only \$5.50.

Weight less than thirty pounds; can go by express or freight at very small cost. Just think of it! A Parer, Corer and Slicer with a Fruit Evaporator, all for only \$5.50.

YOU CANNOT AFFORD TO LOSE THIS OFFER

Dear Sir—I found the Cook Stove Drier which I bought of you last fall just as represented and I think the world of it; it really paid for itself last fall. I dried 400 pounds of dried apples with it and it did its work perfectly.

Yours respectfully,
CHARLES B. REES

BEST GRADE BERRY BASKETS

U. S. STANDARD SIZE

Quarts, Close Quarts and Oblong Pints

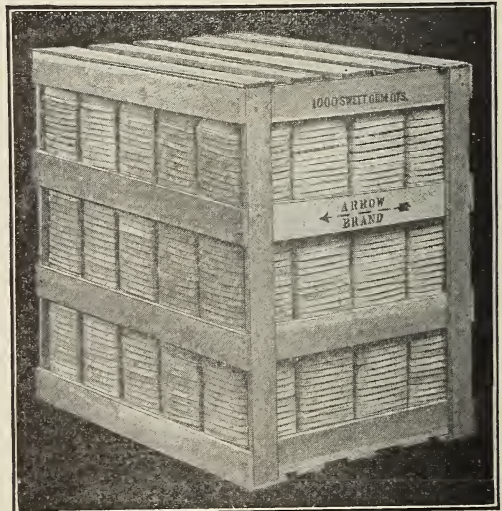
"ARROW BRAND"

Sweet Gum

You should be careful to get only the "Arrow Brand" Baskets, which are superior in quality to other makes. Made of Sweet Gum, and securely crated 1,000 in a crate.

Price per 1,000, \$3.50

Orders entered NOW for Future Shipment.



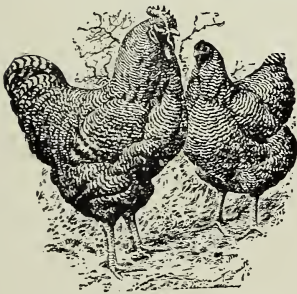
READ INSIDE FRONT COVER BEFORE PLACING YOUR ORDER.

CATALOG INDEX

| | | | |
|--------------------------|---------------------|----------------------------|---------------------|
| Apples | pages 18 to 25 | Nuts | page 35 |
| Blackberries | page 39 | Ornamentals | pages 47 to 58 |
| Cherries | pages 5 to 11 | Peaches | pages 30 to 32 |
| Currants | pages 41 and 42 | Pears, Standard | pages 26 and 27 |
| Evergreens | page 58 | Pears, Dwarf | page 17 |
| Gooseberries | page 43 | Plums and Prunes | pages 12 to 17 |
| Grapes | pages 44 and 45 | Poultry | Inside Back Cover |
| Garden Roots | page 46 | Quinces | page 33 and 34 |
| Garden Tools | pages 65 to 66 | Raspberries | pages 36, 37 and 38 |
| Hedge Plants | page 51 | Roses | pages 59, 60 and 61 |
| Mailing Trees and Plants | pages 62, 63 and 64 | Strawberries | page 40 |

Green's Poultry Department

Cockerels, Pullets, and Eggs for Hatching for Sale



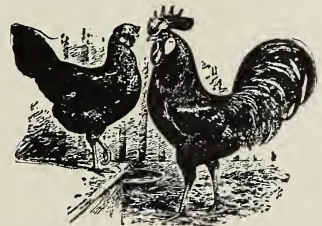
BARRED PLYMOUTH ROCKS

Barred Plymouth Rocks—This breed is as solid as its name and is often called the "Farmer's Friend," the "All Round Fowl," the "Old Reliable." It is the bird for business, and deemed by many the best fowl for farm and home raising. It is not only a good layer, but is quick to develop for the early market. As a far sighted farmer once said to us, "When you kill one you've got something."

PRICE OF BIRDS OF ALL BREEDS—Cockerels, \$2.50, \$3.00 and \$5.00 each; Pullets, \$2.00, \$2.50 and \$3.00 each; Trios, \$6.00, \$8.00, \$10.00. Whatever price you pay I will see that you get good value.

C. A. GREEN, Prest. Green's Nursery Co.

Single Comb Brown Leghorns—The acknowledged queen of the practical egg laying breeds is the Leghorn, when judged by the standard of the greatest number of marketable eggs produced at least cost. Not only are the hens persistent layers, but they are extremely active foragers and waste no time in setting. Like a good milch cow they put little fat upon their bones, but devote all surplus nourishment to steady production. They eat less than the heavy breeds, but whatever they consume is put to good purpose.



**SINGLE COMB BROWN
LEGHORNS**

PRICE OF EGGS FOR HATCHING FOR BOTH BREEDS—From good breeding pens, \$1.00 per 13; from our best breeding pens, \$2.00 per 13. While we do not guarantee the fertility of our eggs we are willing to replace all settings from which the purchasers receive less than six chicks, at half the price paid.

CHERRY COLLECTION No. 1

26 Trees for \$3.48

- 5 Early Richmond. Early sour.
 - 10 Montmorency. Medium early sour.
 - 5 English Morello. Late sour.
 - 2 Gov. Wood (White). Earliest sweet.
 - 2 Green's Black Tartarian. Medium sweet.
 - 2 Napoleon (White). Late sweet.
- All first class, medium size trees two years old.

Bargain Price, All for \$3.48.

(Catalogue Price, \$4.20)


CHERRY COLLECTION No. 4 10 ONE YEAR OLD CHERRY

To introduce our splendid 1 year old cherry trees

We offer ten first-class 1 year trees 4 to 5 feet for \$1.75. All the largest size, best, sweet.

- 2 Green's Tartarian, 2 Napoleon,
 - 2 Gov. Wood, 2 Windsor,
 - 1 New Bing, 1 New Lambert
- Ten Trees, Bargain Price \$1.75**

(Catalogue Price, \$2.20)

 Be sure and Place YOUR Address Here.

Name

Post Office

State

Put Stamp
Here.

GREEN'S NURSERY CO.,

ROCHESTER,

N. Y.



GREEN'S NURSERY COMPANY

ROCHESTER, N. Y.

Dear Friend and Patron:

Are you aware that this catalog may prove more valuable to you than any book you have ever received?

Owing to frequent showers throughout the past season it has been one of the most favorable for plant and tree growth ever known here and in consequence our trees and plants are better than ever.

Do you know that you can trebble the income of your farm or home by planting fruit trees, vines and berry bushes? In this way you can make it so attractive that with the addition of a few ornamental trees and shrubs you will be able to sell your place for a far better price than at present. The rich men of your state are making money from fruit growing. Why not you? The supply of fruit last year was not half equal to the demand. Do not say that your land won't grow fruit. No matter how poor your land may be it can be made to yield good profits by the planting of some kinds of fruits.

If you live in the village or city, or on the farm, the value of your property can be doubled by planting a fruit garden, and by planting ornamental trees, vines and plants around the lawn; thus decorating your home grounds and making them attractive to your own people and others. Notice the homes that look the most attractive and you will find that they are invariably the ones that have a background of trees and shrubs. Ten dollars worth of ornamental trees and flowering shrubs will add hundreds of dollars to the salable value of your home.

Why you should buy Green's plants and trees: We are the oldest, largest and most responsible financially, of any mail order nursery in the world. When you buy of us you are dealing direct with the planter and producer, saving all expenses incurred by agents. In buying of us you are getting your stock at practically wholesale prices, and you can be sure of getting varieties that are TRUE TO NAME, as are trees are grown from our bearing orchards. All stock sent out by us is guaranteed TRUE TO NAME. This is one of the most important features of the nursery business, and of greatest importance to the planter that trees should be as represented. We have men in our employ who have been with us thirty years. By their aid and by scientific methods we produce the hardiest, cleanest, thriftiest and best shaped trees that can be grown. Our nurseries are inspected by state officials and every tree that leaves our place contains a certificate of freedom from disease.

Please turn at once to pages 6 and 12 and notice our prices for cherry and plum trees. We have a big supply of them to sell and are able to offer them at very low prices.

Remember all orders are filled in the rotation in which we receive them. Sit down now and make out your order on the order sheet found in back of our catalog. Take advantage of our premiums. Now! Tonight! And thank us at your leisure.

Respectfully yours,

C. A. GREEN, Pres.
Green's Nursery Co.

DIPLOMA

LARGEST AND BEST
RED CURRANT

PRICE OF
TWO YEAR OLD PLANTS

80¢ PER 10



SYRACUSE NEW RED RASPBERRY. GREEN'S SPECIALTY

VERY LARGE, HARDY, MOST PRODUCTIVE, PRICE OF PLANTS \$2.00 PER 10
TWO PLANTS GIVEN FREE WITH EACH \$5.00 ORDER FOR TREES ETC.