









# AIRCRAFT ACTION REPORT

RESTRICTED  
(Reclassify when filled out)

(OMIT THIS SHEET IF NO ATTACK WAS MADE)

**SECRET**

REPORT No. 19

## XI. ATTACK ON ENEMY SHIPS OR GROUND OBJECTIVES (By Own Aircraft Listed in II Only).

- (a) Target(s) and Location(s) Target Areas 216 R and S, Iwo Jima (b) Time Over Target(s) 1340-1350 (Zone) -10  
(FOR SHIPS INCLUDE ALL IN AREA UNDER ATTACK)
- (c) Clouds Over Target 10/10 at 3,000 feet.  
(BASE IN FEET, TYPE AND TENTHS OF COVER)
- (d) Visibility of Target Clear (e) Visibility 15 Miles  
(CLEAR, HAZY, PARTIALLY OBSCURED BY CLOUDS, ETC.) (MILES)
- (f) Bombing Tactics: Type Glide Bombing Bomb Sight Used Mark 8  
(LEVEL, GLIDE OR DIVE) (TYPE)  
Bombs Dropped per Run 10 100# or 2 500# Spacing Select Altitude of Bomb Release 1,200  
(NUMBER) (FEET) (FEET)
- (g) Number of Enemy Aircraft Hit on Ground: Destroyed None Probably Destroyed None Damaged None

(h) AIMING POINT	(i) DIMENSIONS OR TONNAGE	(j) NO. A/C ATTACKING (k) SQUADRON	(l) BOMBS AND AMMUNITION EXPENDED, EACH AIMING POINT	(m) NO. HITS On Aiming Point	(n) DAMAGE (None, slight, serious, destroyed or sunk)
1 Target areas 216 R and S,	400 Yds. X	8 VI-45	Eight 500# G.P. Forty 100# G.P.	8 40	Serious
2 especially area surrounding	400 Yds.		Sixty-four Mk. 146 rockets	64	
3 outcropping of rock with caves					
4 in it.					
5					
6					
7					
8					

(o) RESULTS: (For all hits claimed on ship targets and for land targets of special interest, draw diagram, top or side view or both, as appropriate, showing type and location of hits. For all targets give location and effect of hits, and identify by numbers above. Use additional sheets if necessary).

The eight torpedo planes were instructed by the Air Coordinator to drop all bombs and launch all rockets in target areas 216, R and S where it was believed the enemy had hidden artillery positions. Several planes made dry runs observing the area and could see no artillery positions, but did observe an outcropping of rock about 100 feet high in the center of the assigned area with caves in it and small reinforced openings around it. (See photos attached). The attack was made, therefore, on that promontory and the area immediately surrounding it. The planes dropped their bomb loads on and around this promontory on their first run and fired their rockets on a second run. Bombs and rockets exploded at mouth of main cave and in area adjacent to promontory. Serious damage was done to any installations in these areas, but the nature of such installations is not known.

(p) Were Photographs Taken? Yes Photographs of Damage, When Taken, Should Be Attached By Staple.







# AIRCRAFT ACTION REPORT

RESTRICTED  
(Reclassify when  
filled out)

**SECRET**

REPORT No. 19

**XIII. MATERIAL DATA.** (Comment freely on performance or suitability, following check list at left.  
Use additional sheets if necessary).

**ARMAMENT**

Guns, Gunsights  
Turrets  
Ammunition  
Bombs, Torpedoes  
Bomb Sights  
Bomb Releases

**COMMUNICATIONS**

Radio, Radar  
Homing Devices  
Visual Signals  
Codes, Ciphers

**RECOGNITION**

IFF  
Signals  
Battle Lights  
Procedures

**PROTECTION**

Armor; Points and Angles  
of Fire Needing Further  
Protection  
Leak Proofing

**EMERGENCY EQUIPMENT**

Parachutes  
Life Belts, Life Rafts  
Safety Belts  
Emergency Kits  
Rations, First Aid

**NAVIGATIONAL EQUIPMENT**

Compasses  
Driftsights  
Octants  
Automatic Pilots  
Charts  
Field Lighting

**INSTRUMENTS**

Flight  
Power Plant

**OXYGEN SYSTEM**

**CAMOUFLAGE AND  
DECEPTION DEVICES**

**STRUCTURE**

Airframe  
Control Surfaces  
Control System  
Dive Flaps  
Landing Gear  
Heating System  
Flight Characteristics  
At Various Loadings

**POWER PLANT**

Engines  
Engine Accessories  
Propellers  
Lubricating System  
Starters  
Exhaust Dampers

**HYDRAULIC SYSTEM**

**ELECTRICAL SYSTEM**

Auxiliary Plant  
Lights

**FUEL SYSTEM**

**FLIGHT CLOTHING**

**MAINTENANCE**

**BASE FACILITIES**

Plane Servicing Equipment  
Personnel Facilities

REPORT PREPARED BY:

APPROVED BY:

**Nalcoln I. RUDDOCK, Lt. (j.g.) USNR,**

SIGNATURE

**A.C.I. Officer**

RANK AND DUTY

**J. G. FIGGARI, Lieut., USNR,**

SIGNATURE

**Commanding Officer**

RANK AND DUTY

**25 Feb. 1945**

DATE



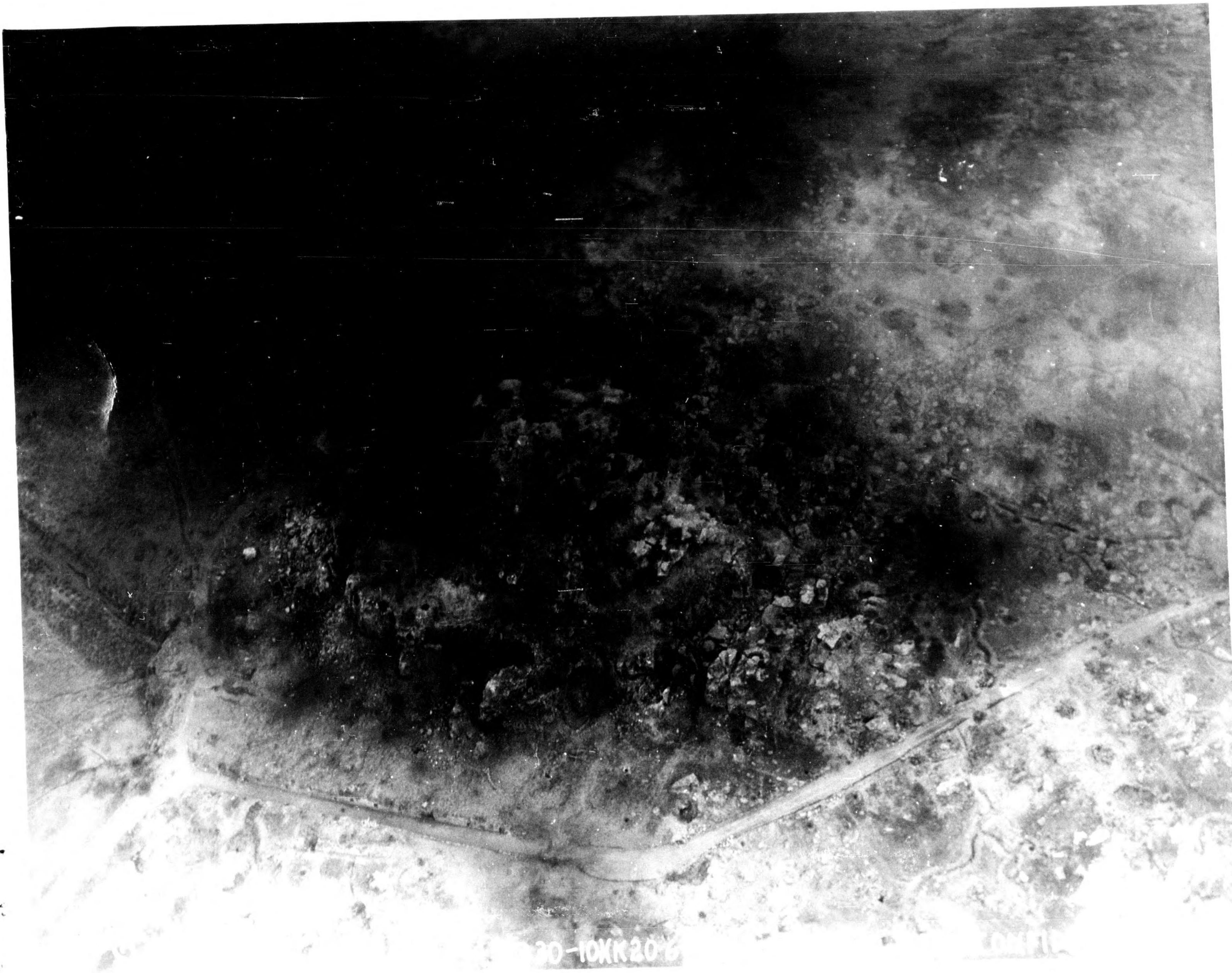


A

1-7

(SAN JAC 54)(21, FEB, 1945, 1330-10)(K20 6 3/8 VAR, OBL)(IWO JIMA)(CONFIDENTIAL)



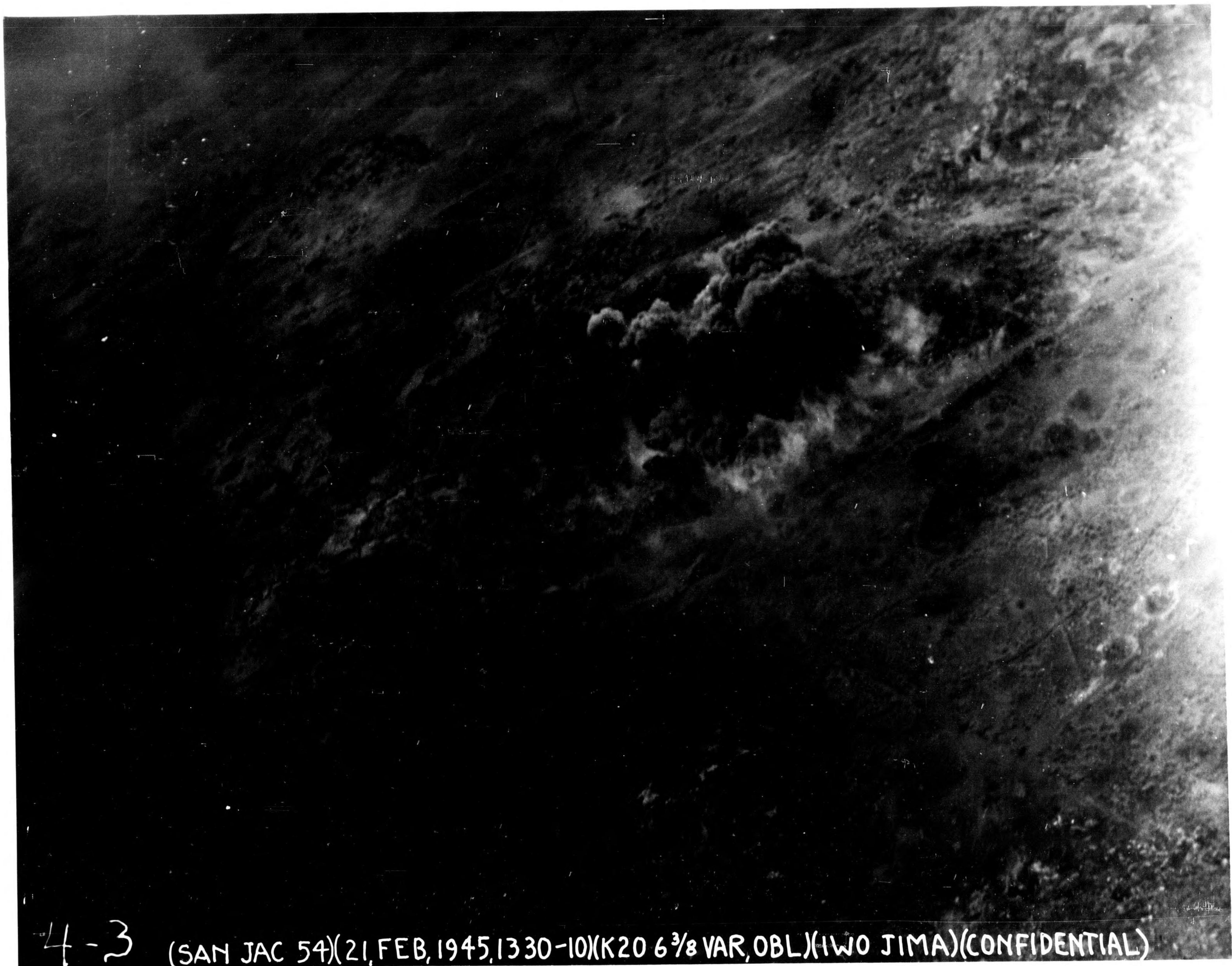


B

20-10XK20-6

0011





U

4-3 (SAN JAC 54)(21, FEB, 1945, 1330-10)(K20 6<sup>3</sup>/<sub>8</sub> VAR, OBL)(IWO JIMA)(CONFIDENTIAL)