

Historic, Archive Document

Do not assume content reflects current scientific knowledge, policies, or practices.

62.09

1.75

CALIFORNIA GROWN

Holland BULBS



1917 CATALOGUE
 BULBS & SWEET PEAS

COTTAGE GARDENS NURSERIES, Inc.
 EUREKA, HUMBOLDT COUNTY, CALIFORNIA

American Grown Holland Bulbs

For many centuries the Dutch Burghers of Holland have had a practical monopoly of growing and trading in Tulips, Narcissus, Hyacinths, Crocus, etc., which have become known as Dutch or Holland Bulbs. Exhaustive experiments conducted at great expense of time and labor by the United States Government at Bellingham, Washington, have demonstrated that bulbs of fully as good, even much better quality can be grown on the Pacific Coast as are furnished by the Holland growers.

We are the largest growers of Holland Bulbs in America.

Our stock of American grown Holland Bulbs is second to that of no other American firm, either in quantity, quality, size of bulbs or selection of varieties suitable for growing in the Western Hemisphere.

The advantages of Pacific Coast grown bulbs are many.

First—The Pacific Coast grown bulbs ripen some six weeks before the bulbs grown in Holland begin to ripen.

Second—They ripen during a uniformly rainless season and their ripening is not interrupted by unseasonable rains nor by undue wet conditions in the soil under which the bulbs are growing.

Third—While the soil in which our bulbs are grown is light and friable in texture and is thoroughly drained during our winter rainy season, it retains its moisture for a long period after the dry season sets in; in consequence of which our bulbs ripen slowly, evenly, continuously and thoroughly, growing to the maximum in size and solidity.



Narcissus Incomparable Great
Warley
Natural size

CULTURAL DIRECTIONS

Most Desirable Soils for Growing Bulbs

The soil for all Holland Bulbs should be well drained. Hyacinths do best in rather old, somewhat sandy soils enriched with plenty of old, well-decomposed cow manure. Narcissus and Tulips do well in rather heavier loamy soils but require an abundance of well-decayed humus. All bulbs are impatient of dense heavy clays and especially of sour wet situations. If the soils are too heavy and wet Hyacinths become diseased and decay, while Tulips and Narcissus produce small, inferior bulbs.

Compost for Potting Up Bulbs for Forcing should be composed of free open soil of good substance, enriched by adding one-fifth in bulk of thoroughly decomposed cow manure and chopped sods to furnish the necessary humus and mechanical condition.



The Narcissus

This popular and satisfactory flower has come into greater demand each year and is now considered one of the most valuable of all flowering bulbs. Being perfectly hardy they do well planted in almost any location and if left undisturbed they will increase in size and flower year after year, making it one of the most valuable bulbs for naturalizing. The varieties we offer are choice, distinct types of the different groups.

CULTURAL DIRECTIONS

The Narcissus prefers a deep, rather moist loam. Do not use stable manure, as it is injurious. Fine bone meal is the best and hydrated lime may be used to great advantage in all acid soils. Apply bone meal at the rate of 2,000 lbs. to the acre three or four weeks before planting, and rake into the soil thoroughly. About a week before planting, apply lime at the rate of a ton to the acre, then spade up the soil and mix the lime thoroughly to a depth of one foot. Plant the bulbs 3 inches deep, the crown of the bulb 3 inches under the surface of the soil.



Narcissus Fields, Cottage Gardens Bulb Farms, Humboldt County, California

Narcissus

NOVELTIES AND RARE VARIETIES

In England Novelty Narcissus are eagerly sought by men of large means, owners of the great English baronial estates. Fabulous prices are often paid for single bulbs of varieties of great merit. Indeed in some instances the entire stock of a Novelty is purchased by a single owner who keeps it all to satisfy his own pleasure.

Below we list a few Novelties of sterling merit all of which have been fully tested at our Eureka proving grounds.



Giant Trumpet Narcissus
IMPERATOR
2/3 natural size
See outside front cover for
natural size bloom

NEW AND RARE VARIETIES

New Giant White Trumpet Narcissus **IMPERATOR** Rightfully Named the Emperor of All Daffodils

The largest flowered of the white trumpet varieties; as yet without a rival in size and beauty; an immense, elegantly recurved and handsomely fluted trumpet and broad rounded fleshy perianth. The growth vigorous and sturdy. It is a late bloomer, among the last to flower, which adds much to its value. 5 bulbs only to offer at \$200.00 each.

Peter Barr—Another splendid variety of the Ajax White Trumpet class. A grand variety in all respects, second only to **Imperator**. Called the King of White Daffodils. Beautiful bold bloom, with pure white perianth and trumpet. \$4.00 each.

Cleopatra—Ajax Yellow Trumpet. A magnificent variety in every respect. Very large flower; very broad clear yellow perianth and bold deep yellow trumpet. One of the very best of the recent novelties. \$4.00 each.

Cornelia—Ajax Yellow Trumpet. Very large well formed bloom; fine soft canary yellow throughout. Large well expanded trumpet with broad smooth perianth. Height 18 inches. Splendid variety for pot culture as well as for the outdoor border. 50 cents each.

King Alfred—Ajax Yellow Trumpet. One of the most valuable varieties of recent introduction. A remarkably handsome daffodil. Strongly recommended for all purposes, forcing as well for border culture, and commercial cut flower growing; flowers of splendid size, on grand 18 to 20 inch stems, of great substance and refined finish. Of a uniform, clear, rich golden yellow color. 25 cents each, \$2.50 per dozen.

Shakespeare—Ajax Yellow Trumpet. Erect, bold beautiful flower. Large broad sulphur yellow perianth and large golden yellow trumpet. 25 cents each, \$2.50 per dozen.

Van Waverens Giant—Ajax Yellow Trumpet. Flowers of immense size; largest of all the yellow trumpet daffodils; perianth campanulate in form; primrose yellow; huge bright orange yellow trumpet with very broad mouth. Exceptionally tall grower. 50 cents each, \$6.00 per dozen.

Duke of Bedford—Ajax Bicolor. Magnificent flower, $4\frac{1}{2}$ inches across; pure white broad perianth of great substance. Large clear soft yellow trumpet. Exceptionally early. 60 cents each, \$5.00 per dozen.

Glory of Noordwijk—Ajax Bicolor. One of the grand bicolor varieties. Large clear yellow trumpet, long and broad at mouth. Perianth sulphur white. 25 cents each, \$2.50 per dozen, \$20.00 per 100.

Wearedale Perfection—Ajax Bicolor. Very large white perianth, trumpet soft sulphur. A splendid variety, exceedingly handsome. Awarded many first class certificates. 50 cents each, \$5.00 per dozen.

MISCELLANEOUS VARIETIES

Red Beacon—Barri. A lovely attractive flower; broad ivory white perianth of great substance, slightly shaded sulphur yellow at the base; cup large, prettily fluted and the most intense, brilliant fiery orange red. Strong grower. Height 17 inches. \$2.00 each.

Masterpiece—Barrii. Magnificent new variety. Perfect form; snow white petals of great substance. Cup glowing orange scarlet. An exquisite bloom. \$4.00 each.

Gloria Mundi—Incomparabilis. A grand flower; large clear yellow perianth, with broad well-expanded orange scarlet cup. Royal Horticultural Society certificate. 10 cents each, \$1.00 per dozen, \$8.00 per 100.



Giant Yellow Trumpet Narcissus
CLEOPATRA

Great Warely—Incomparabilis. A giant Bicolor Sir Watkin. The largest Incomparabilis variety ever produced. Broad massive snow white perianth; clear yellow crown, measuring $1\frac{1}{2}$ inches across. The finest of all the Incomparabilis. \$5.00 each.

Wills Scarlet—Incomparabilis. Fiery orange; wide open cup, pure white perianth. Very striking and effective. First class certificate R. H. S. \$2.00 each.

Poeticus Cassandra—A gigantic Noble Poeticus. Large blooms of great substance. Broad white perianth; cup deeply rimmed with dark red. Award Merit R. H. S. A splendid variety. 15 cents each, \$1.50 per dozen, \$10.00 per 100.

Campnell Odorus Regulosus Maximus—Beautiful flower; ideal form; color deep rich golden yellow. Twice the size of old Regulosus. Many certificates. \$5.00 each.

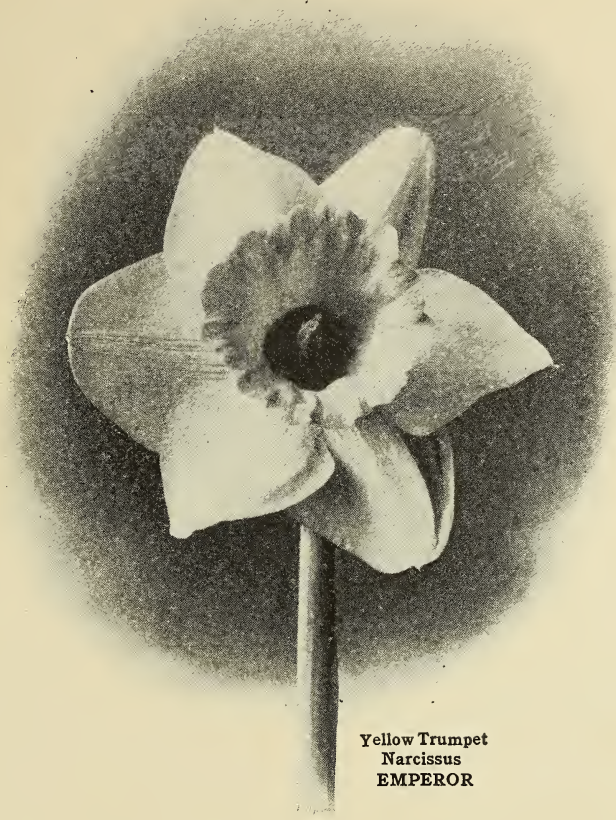
Narcissus

AJAX YELLOW TRUMPET

Commonly known as Yellow Daffodils

Distinguished by their large bloom, and prominent broad, long trumpets and clear, pleasing, yellow colors. Plants are very vigorous; blooms borne on strong, long, erect stems; such varieties as Emperor, Golden Spur, King Alfred, Henry Irving are forced in enormous quantities by commercial florists.

All Yellow Trumpet Narcissus
8 cents each. 75 cents per dozen,
except where noted.



Yellow Trumpet
Narcissus
EMPEROR

Cleopatra—\$4.00 each.

See Novelties, page 3.

Cornilia—50 cents each.

See Novelties, page 3.

Emperor—Large golden yellow trumpet, deep primrose perianth; very free flowering and produces flowers of great substance; large bulbs.

Glory of Leiden—Trumpet full yellow, perianth soft yellow; a very large and perfect flower. 15 cents each, \$1.50 per dozen.

Golden Spur—Uniform deep golden yellow; the most popular of the single narcissus owing to its earliness and the substance and beauty of its flowers.

Henry Irving—Golden yellow; one of the earliest; a grand flower.

King Alfred—25 cents each, \$2.50 per dozen.
See Novelties, page 3.

Major (Trumpet Major)—Pure yellow; a popular and much planted variety.

Maximus—Golden yellow trumpet fluted and beautifully recurved; the darkest yellow.

Minimus—Rich full yellow; very small and dwarf.

Monarch—Golden yellow; one of the largest.

Obvallaris—Pure yellow; very early.

Queen of Holland—Golden yellow trumpet and perianth; the flower looks like "Golden Spur" but is larger and later.

Shakespeare—25 cents each, \$2.50 per doz.
See Novelties, page 4.

Van Waverens Giant—60 cents each, \$6.00 per dozen.
See Novelties, page 4.

Narcissus

AJAX TRUMPET BICOLOR

All Narcissus 8 cents each, 75 cents per dozen,
except where noted.

- Duke of Bedford**—50 cents each, \$5.00 per dozen.
See Novelties, page 4.
- Empress**—Pure white perianth, deep yellow trumpet, extra large bulb.
- Grandis**—White perianth, yellow trumpet; later than Empress.
- Glory of Noordwijk**—25 cents each, \$2.50 per dozen, \$20.00 per 100.
- Horsfieldii**—White perianth, yellow trumpet; one of the earliest.
- J. B. M. Camm**—White perianth, soft yellow trumpet; beautiful shaped flower.
- Madame Plemp**—Pure white perianth, golden yellow trumpet; a bold vigorous flower.
- Mrs. Walter T. Ware**—Pure white perianth, golden yellow trumpet frilled at the brim; very free flowering and early.
- Princeps**—Primrose perianth, yellow trumpet.
- Victoria**—Creamy white perianth, rich yellow fluted trumpet; one of the most free flowering varieties; large.

POLYANTHUS VARIETIES

Sometimes characterized as Bunch Flowered Narcissus; produce large clusters of small, crowned blooms. They are as a rule very sweet scented and are valuable as cut blooms. Millions of the large flowered Paper White Polyanthus are annually forced by the florists of America.

All Polyanthus Narcissus 6 cents each, 60 cents per dozen,
except where noted.

- Bazleman Major**—Pure white, deep yellow cup, large bloom, strong stems.
- Grand Monarque**—Large white flower with primrose yellow cup.
- Grand Primo**—White, yellow cup.
- Grand Soleil D'or**—Clear yellow, deep orange cup, large truss, long stems, very fragrant, good for forcing.
- Janne Supreme**—Pure yellow blooms, orange cup.
- Lord Canning**—Fine large, extra yellow flowers.
- Mont Cenis**—Pure white with pretty yellow cup.
- Paper White Grandiflora**—Snow white, large blooms; large trusses, long, strong stems, very fragrant; splendid for forcing.
- White Pearl**—Large clear white blooms in large trusses borne on medium length strong stems; very fragrant. 8 cents each, 75 cents per dozen.

Narcissus

AJAX WHITE TRUMPET

The most chaste and pleasing of the trumpet varieties; not very well known in America as yet; should be much more extensively grown.

8 cents each, 75 cents per dozen except where noted.



Narcissus White Trumpet
PETER BARR

Albicans—White perianth, primrose trumpet passing to white; very early.

Imperator—\$200.00 each.
See Novelties, page 3.

Madame De Graaff—Perianth pure white, trumpet very pale primrose passing to pure white and rolled back at the brim; a very elegant flower. 15 cents each, \$1.50 per dozen, \$10.00 per 100.

Mrs. Camm—Pure white perianth, large creamy white trumpet; very fine.

Peter Barr—\$4.00 each.
See Novelties, page 3.

William Goldring—White with drooping habit; very fine.

W. P. Milner—Pale sulphur; very pretty.



Visitors come by thousands to view the grand display of blooms at the Cottage Gardens Bulb Farms on Daffodil Day

NARCISSUS BARRII

Varieties belonging to this group are crosses between yellow trumpets and poeticus. The crown is usually not over one-third the length of the perianth segments.

6 cents each, 60 cents per dozen,
except where noted.

Conspicuous—Large soft yellow perianth; short cup edged orange scarlet; very bright and showy; fine for naturalizing. **Firebrand**—Creamy white perianth; intense fiery cup; a very distinct and beautiful variety. 10 cents each, \$1.00 per dozen.

Dorothy E. Wemyss—Large white perianth; canary yellow cup edged orange scarlet; a strong vigorous grower; extra fine. **Flora Wilson**—Pure white perianth; cup lemon, heavily stained orange scarlet; a very handsome flower.

Masterpiece—\$4.00 each.
See Novelties, page 4.

Red Beacon—\$2.00 each.
See Novelties, page 4.

DOUBLE NARCISSUS

The well-known Double Daffodils. Always popular and exceedingly useful for cut blooms and naturalizing in mild climates.

All double Narcissus 6 cents each, 60 cents per dozen,
except where noted.

Alba Pleno Odorato—Pure white; a splendid cut flower; sweet-scented. 20 cents each, \$2.00 per dozen. **freely large handsome flowers of elegant form; fine for borders or pot culture** 20 cents each, \$2.00 per dozen.

Incomparabilis—(Butter and eggs) yellow, orange colored towards the center; very effective in clumps and masses. **Primrose Phoenix**—Soft lemon yellow; large double rose shaped flowers borne on a long stem; valuable as a cut flower.

Orange Phoenix—(Eggs and bacon) orange and yellow; large flowers on long stem. **Sulphur Phoenix**—Silvery white; splendid variety for cutting; the flower is rose shaped of a most pleasing shade.

Plenipo—Full double yellow, primrose and white; of sturdy and erect habit bearing **Van Sion**—Golden yellow; very double; a splendid popular variety.

NARCISSUS INCOMPARABILIS

This group differs from the *Barrii* as the crowns are larger, sometimes being three-quarters of the length of a perianth segment. The color of the perianth is either white or yellow.

6 cents each, 60 cents per dozen, except where noted.

Beauty—Sulphur perianth; large yellow cup margined orange scarlet; a bold strong flower; vigorous grower.

C. J. Backhouse—Yellow perianth; long orange scarlet cup; very beautiful and showy.

Frank Miles—Large soft clear yellow flower, elegantly twisted.

Gloria Mundi—10 cents each, \$1.00 per dozen, \$8.00 per 100.

See Novelties, page 4.

Great Warley—\$5.00 each.

See Novelties, page 4.

Queen Sophie—Sulphur perianth; large spreading frilled cup stained orange scarlet; very showy.

Sir Watkin—Sulphur perianth; crown yellow, tinged bright orange; large handsome flower; very popular as a cut flower.

Wills Scarlet—\$2.00 each.

See Novelties, page 4.

NARCISSUS LEEDSII

In this group the crowns are as large as those of the *Barrii* and *Incomparabilis* varieties but the perianths are always white and the crowns are mostly white or light yellow.

6 cents each, 60 cents per dozen postpaid.

Minnie Hume—Large white perianth, cup passing from fine lemon to white; very fine flowers.

White Lady—Broad white perianth, dainty cup shaded soft lemon, beautifully crinkled; a very pretty flower and good bloomer.

Mrs. Langtry—Pure white perianth, large white cup edged yellow; excellent for cutting and naturalizing.

White Queen—Large pure white perianth, citron cup passing off white; an excellent variety.

NARCISSUS POETICUS

Varieties belonging to this group always have a pure white perianth with short but wide mouthed cups which are always more or less deeply rimmed orange or scarlet.

6 cents each, 60 cents per dozen,
except where noted.

- Almira**—Snow white petals and a beautiful shaped cup, canary yellow bordered red; superior to the well known "Ornatus."
- Grandiflorus**—Perianth pure white, cup large, suffused crimson; very large flowers on tall strong stems.
- Cassandra**—15 cents each, \$1.50 per dozen, \$10.00 per 100.
See Novelties, page 4.
- Ornatus**—Perianth pure white, cup yellow margined scarlet; one of the most popular of all; an excellent variety for cutting.
- Recurvis (Common Poeticus)**—Pure white perianth, scarlet cup; late.

NARCISSUS POETAZ

By crossing Poeticus and Polyanthus varieties this new perfectly hardy strain of Narcissus was obtained. Besides being hardy this class does not have the strong, rather disagreeable scent of the Polyanthus varieties. The flowers are produced in clusters.

10 cents each, \$1.00 per dozen, postpaid, except where noted.

- Alsace**—Petals pure white with yellow eye, edged slightly reddish; broad large flowers; one of the earliest.
- Aspasia**—Pure white with yellow eye; flowers borne on very tall stems; a strong and vigorous grower.

NARCISSUS POETAZ—Continued

Elvira—Pure white with yellow eye; large flower of good substance; a good keeper; extra free flowering.

Ideal—Pure white with dark orange eye; very large truss.

Irene—Perianth sulphur yellow with orange eye; large broad truss; very pleasing color.

Jaune A'Merveille—Yellow perianth with deep golden yellow eye; the largest yellow variety in its class. 15 cents each, \$1.50 per dozen, postpaid.

JONQUILS AND CAMPERNELS

These are small flowering Narcissus, very easily grown and much prized for their golden-yellow, sweet-scented blossoms which are produced in the greatest profusion.

The double varieties are especially valuable for cut flowers. Valuable for naturalizing in California.

5 cents each, 50 cents per dozen, postpaid.

Camperneli Odorus—Yellow; small flowers growing in clusters.

Camperneli Odorus Rugulosus—Self-colored dark yellow; very free flowering and the best for cutting or naturalizing.

Camperneli Odorus Rugulosus Flore Pleno—Golden yellow; a very tall, free flowering variety.

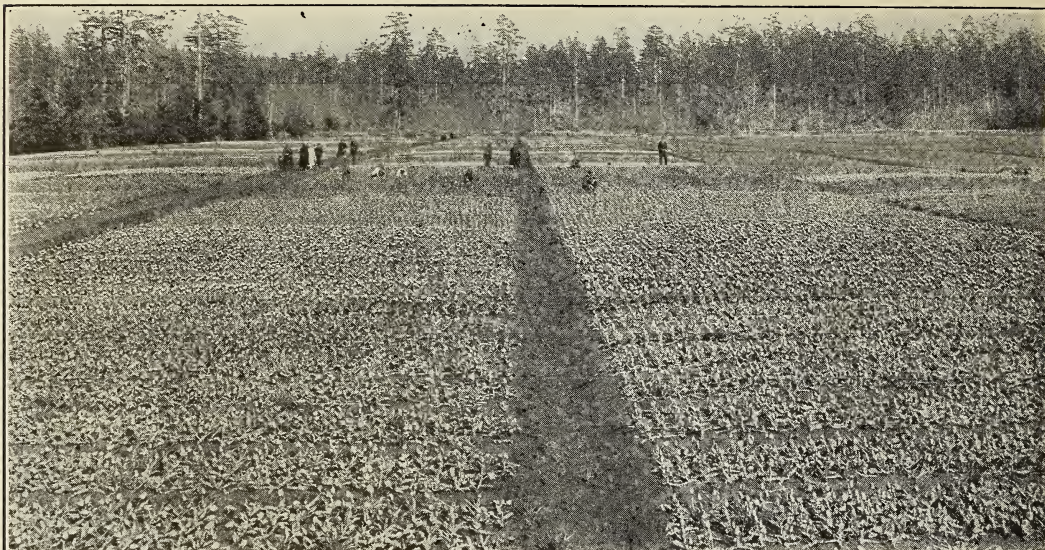
Camperneli Odorus Regulosus Maximus—\$5.00 each.

See Novelties, page 4.

Jonquilla—The small sweet-scented Jonquil so well known.

Jonquilla Flore Pleno—(The Double Jonquil) very fragrant.

Nelsoni Major—Perianth pure white, cup bright yellow; dwarf variety.



Tulip Fields, Cottage Gardens Bulb Farms, Humboldt County, California

The Tulip

Is one of the most satisfactory of Holland Bulbs to grow on the Pacific Coast. It is also forced in immense quantities by the leading American florists for sale either as a cut bloom or in pots or pans.

Whether planted in masses or small beds Tulips produce a handsome and striking effect. As a bedding plant it affords wonderful displays of brilliant attractive colors. For those who desire a continuous display during April and May the Darwins and May-Flowering varieties should be planted to follow the early single and double varieties. Tulips are of easy culture and will succeed in practically any ordinary garden soil, but will respond handsomely to generous culture.

The outdoor culture of Tulips is identical with the culture of Hyacinths in every respect. Keep all bulb beds free from weeds but do not bruise the foliage when working around the plants, as this leads to disease and the loss of bloom and finally destroys the more tender varieties of bulbs.

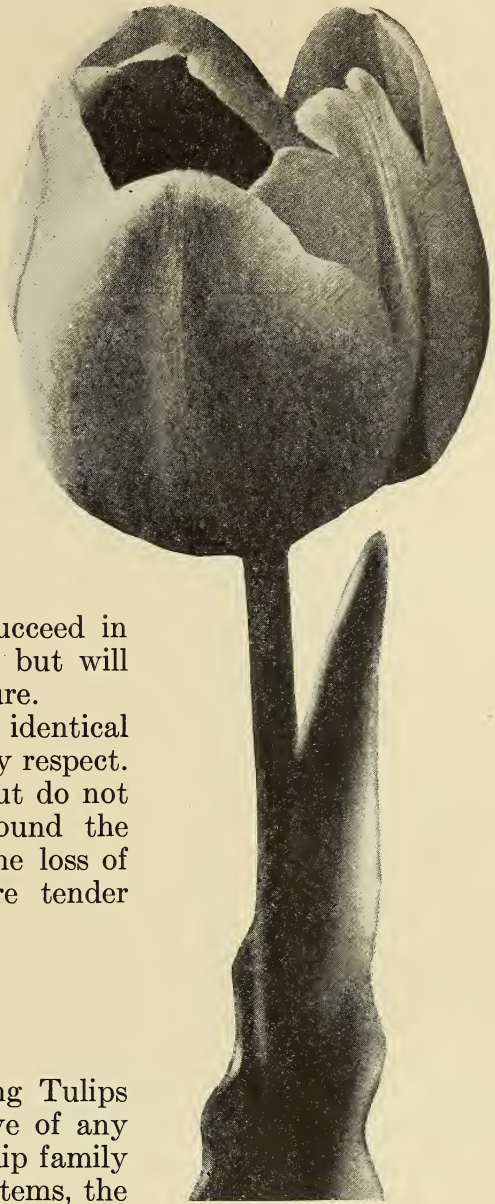
DARWIN TULIPS

This strain of midseason flowering Tulips is beyond question the most attractive of any of the strains into which the great Tulip family has been classified. The strong, long stems, the immense and most brilliant and often curiously colored blooms are the wonder and delight of every amateur as well as professional gardener.

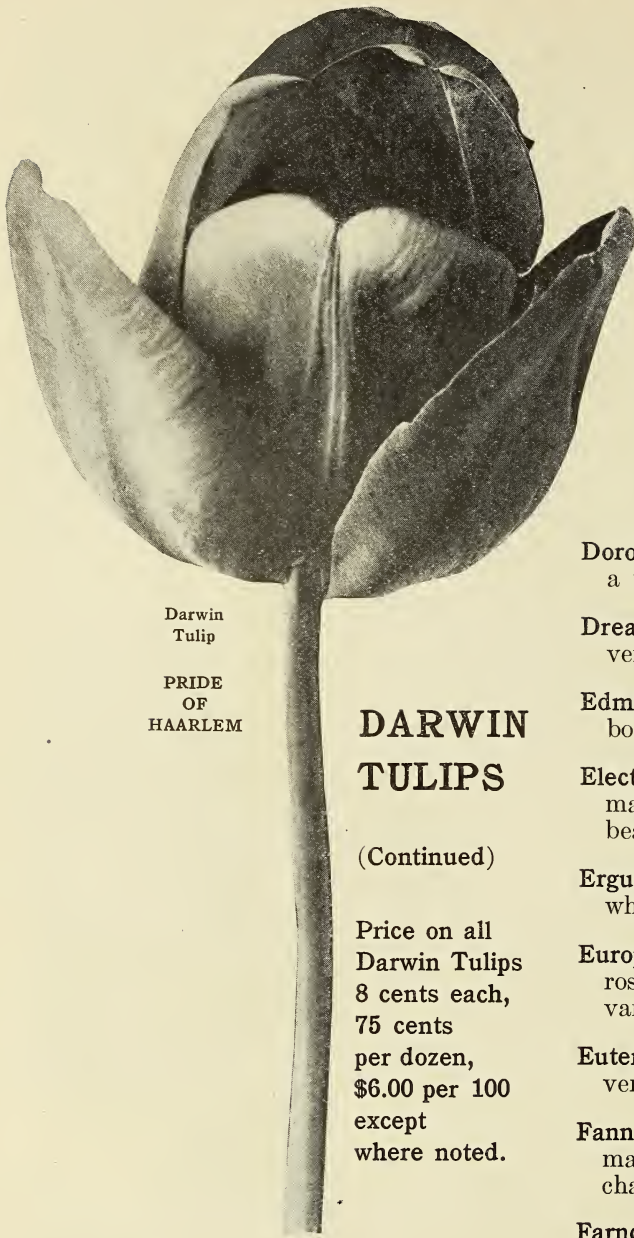
When one adds to these qualities the great durability of the blooms and their adaptability for cut flower purposes, one wonders why ten times the number now annually sold are not used.

The chief characteristics of Darwins are the perfect cup shape of the flowers, substantial petals, extra tall stems and bright colors, ranging from white through all the shades of pink and red to purple, violet and almost black. They are excellent for beds or borders and are much used and well adapted for cutting for table decoration.

Our collection is the best selected and choicest collection of Darwins offered in America.



Darwin Tulip
Sieraad Van Flora



Darwin
Tulip

PRIDE
OF
HAARLEM

DARWIN TULIPS

(Continued)

Price on all
Darwin Tulips
8 cents each,
75 cents
per dozen,
\$6.00 per 100
except
where noted.

Anton Roozen—Vivid rose pink with white base; an enormous flower of great beauty.

Ariande—Brilliant rosy scarlet with blue base; an enormous cup shaped flower on a strong tall stem; one of the showiest bedders.

Baronne De la Tonnaye—Vivid pink margined blush; a beautifully shaped long flower; the leading bedding variety.

Bartigon—Fiery crimson; a showy variety which we highly recommend.
10 cents each, \$1.00 per doz., \$8.00 per 100.

Carl Becker—Soft rose flushed salmon; a large flower of remarkable beauty; particularly adapted for border planting.

Centenaire—Rich violet rose with large blue center; enormous perfect shaped flowers; extra fine.

City of Haarlem—Very beautiful dark scarlet; a flower of enormous size and perfect shape; very fine.
10 cents each, \$1.00 per doz., \$8.00 per 100.

Clara Butt—Delicate salmon pink; a perfect shaped flower much planted and one of the best of its class.

Dorothy—Blush white shaded soft heliotrope; a very fine variety for borders.

Dream—Beautiful soft lilac; large flower; very tall.

Edmee—Vivid cherry rose with lighter border; extra large flowers of great beauty.

Electra—Soft rosy lilac with a broad grayish margin; flowers of distinct shape; very beautiful.

Erguste—Deep heliotrope flushed silvery white, darker inside; very beautiful.

Europe—Glowing salmon scarlet shaded rose; very fine for borders and a splendid variety for pot culture.

Euterpe—Brilliant lilac; extra large flower; very beautiful.

Fanny—Clear rose pink with white center marked blue; a very exquisite flower of chaste beauty.

Farncombe Saunders—Brilliant dark rosy red with a clear white base; one of the largest and most beautiful of the Darwins; perfect shaped flower.

Faust—Deep purple maroon, large and brilliant; very large and well formed flower on tall stem. 10 cents each, \$1.00 per dozen, \$8.00 per 100.

Feu Brilliant—Bright vermilion, blue and white base; one of the most effective bedders.

Flambeau—Rosy scarlet with blue base; a well formed flower; very showy for border work.

DARWIN TULIPS

(Continued)

Price on all Darwin Tulips,
8 cents each, 75 cents per dozen, \$6.00 per 100
except where noted.

Flamingo—Delicate shell pink; a perfect shaped magnificent flower.

Fra Angelico—Dark purplish brown; exceedingly early.

Frans Hals—Blue violet; enormous flower.

Glory—Brilliant scarlet; an excellent bedding variety.

Glow—Dazzling vermilion scarlet, base dark blue, margined white; one of the finest Darwins for bedding or borders.

Gretchen—Outside delicate flesh color, interior soft pink; excellent for cutting.

Gryphus—Dark violet purple; very brilliant; a remarkably handsome, well formed flower.

Gustave Dore—Blush pink, edged silvery rose; large flower on graceful stem; very handsome for pots.

Harry Veitch—Brilliant blood red on strong tall stem; one of the finest for beds or borders.

Isis—Fiery crimson scarlet with blue base; one of the showiest bedders; large and beautiful flower on tall stem.

Kate Greenaway—White, slightly flushed lilac rose; very beautiful; late.

King George V—Dazzling scarlet; immense flower; very handsome.

King Harold—Deep glossy mahogany red; superb variety for the border because of its rich color.

La Fiancee—Outside bright pink, inside salmon pink; its enormous flowers are of perfect shape and unsurpassed substance; tall stem. 10 cents each, \$1.00 per dozen, \$8.00 per 100.

Lantern—Pale silvery lilac passing into white, inside clear lilac with white base; flower of extremely beautiful form; excellent for borders.



Darwin Tulip
CLARA BUTT

La Tristesse—Slaty purple inside, dull slaty blue outside shading to white at the edges; a very distinct Darwin. 10 cents each, \$1.00 per dozen, \$8.00 per 100.

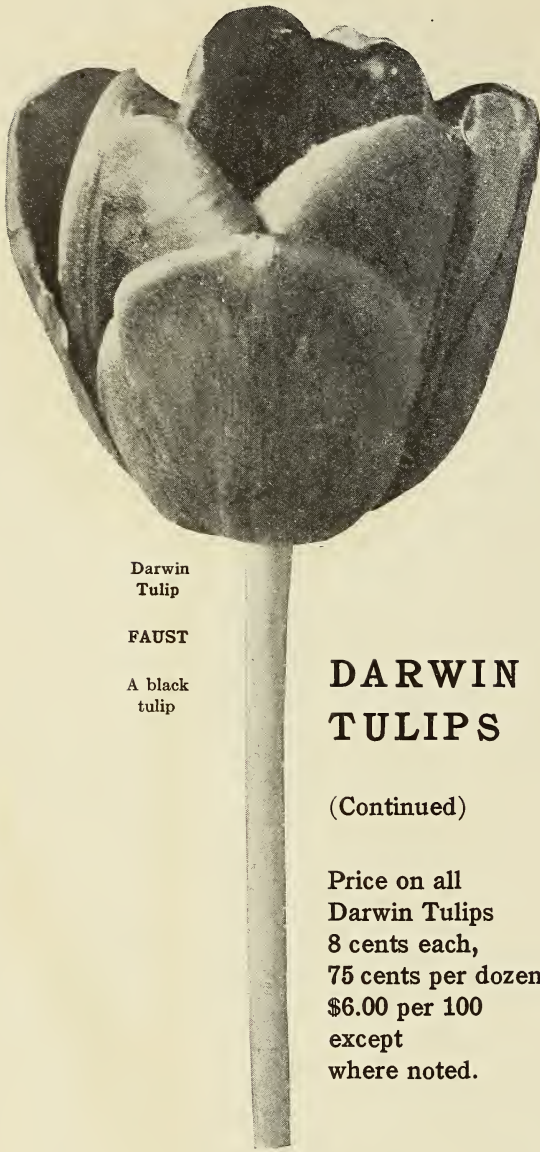
La Tulipe Noire—(The Black Tulip.) This variety comes nearest of all to black; very large flower of fine form. 10 cents each, \$1.00 per dozen, \$8.00 per 100.

La Ingenue—Very delicate rosy pink with a broad border of rosy white; very large flowers of great beauty on tall stem.

Loveliness—Soft carmine rose; a very beautiful tulip suitable for any outdoor position.

Madame Krelage—Soft lilac rose with a broad margin of blush pink; a splendid variety for borders and one of the best for pots.

Massachusetts—Vivid pink with white center; large flowers; of splendid form and color.



Darwin
Tulip

FAUST

A black
tulip

DARWIN TULIPS

(Continued)

Price on all
Darwin Tulips
8 cents each,
75 cents per dozen,
\$6.00 per 100
except
where noted.

May Queen—Soft lilac rose; very long large flower; fine for borders or for planting among shrubs.

Melicette—Lavender, edged violet mauve; one of the most beautiful pure lavender Darwins in existence; very attractive for beds.

Mrs. Cleveland—Beautiful delicate flesh color, suffused old rose; extra fine.

Mrs. Stanley—Large purplish rose with bright blue base; an excellent bedding variety. 10 cents each, \$1.00 per dozen, \$8.00 per 100.

Mystery—Brilliant brown black; large flower; very beautiful. 25 cents each, \$2.50 per dozen.

Nauticus—Glowing dark cerise rose, center dark violet shaded bronze; large and handsome flower on tall stem.

Nora Ware—Silvery lilac; darker towards the center of the petals; extremely beautiful.

Orange Perfection—Brilliant salmon rose; very fine.

Orion—Brilliant dark scarlet with blue center; enormous flower.

Ouida—Bright crimson scarlet; unsurpassed for bedding; very large flower on strong tall stem; lasts a long time.

Painted Lady—Creamy white, faintly tinged soft heliotrope when opening; a beautiful flower on a dark stem; fine for beds or borders.

Pales—Lilac, white center.

Palisa—Dark violet purplish, blue center.

Petrus Hondius—Bright carmine rose; a variety of great brilliancy unsurpassed for bedding. 10 cents each, \$1.00 per dozen, \$8.00 per 100.

Philippe De Comines—Velvety dark purple; large flowers on a stiff stem making it an excellent variety for bedding or borders.

Pride of Haarlem—Brilliant rosy carmine with blue base; a very large flower of superb form; a wonderful tulip unsurpassed for borders; sweet scented.

Princess Elizabeth—Pink; an excellent bedding variety.

Princess Juliana—Salmon scarlet, blue base; a most remarkable and beautiful flower.

Prince of the Netherlands—Glowing cerise red; an extra large flower of striking color and vigorous habit; superb for bedding. 10 cents each, \$1.00 per dozen, \$8.00 per 100.

Professor Francis Darwin—Crimson scarlet with blue base; large bold flower; splendid for borders.

Professor Rauwenhoff—Deep cherry rose; enormous flower of great substance on a strong stem; excellent for border planting. 10 cents each, \$1.00 per dozen, \$8.00 per 100.

Psyche—Rich rose with pale blue base; large handsome flower; fine for pot culture and an ideal cut flower.

Rev. Ewbank—Silvery heliotrope darkening toward the base; good sized flower of remarkably beautiful color; very fine for borders.

Ronald Gunn—Clear violet with white center; very distinct shade; effective among white flowering shrubs.

Scylla—Brilliant scarlet with white base.

Sieraad Van Flora—Vivid rosy red; large flower; early; one of the best. 10 cents each, \$1.00 per dozen, \$8.00 per 100.

Sir Joseph Hooker—Deep scarlet; very showy flower.

Sophrosine—Soft rose lilac, bordered silvery white, blue base; very handsome flower.

Suzon—Delicate rose with blush white margin; large erect flower; very handsome in the border.

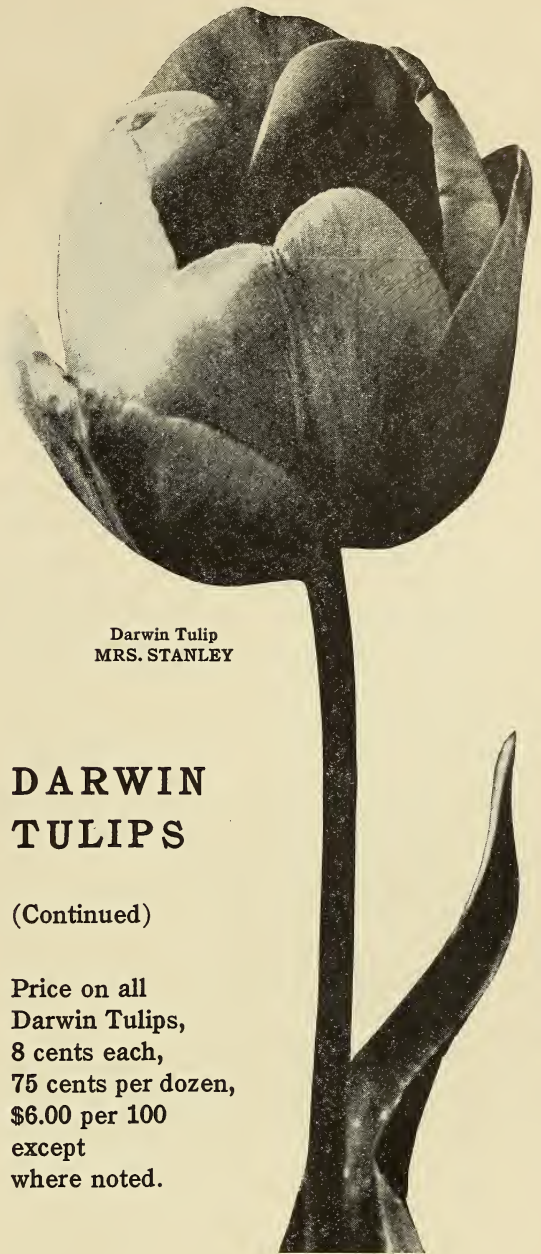
Therese Schwartz—Silvery white with delicate lilac on center of petals; very fine.

Washington—Violet rose with white base marked blue; large and striking flower; excellent for growing in pots. 10 cents each, \$1.00 per dozen, \$8.00 per 100.

Wedding Veil—Silvery white flushed lilac with white base; an extra fine variety.

White Queen—White; it opens rosy white but passes off pure white; a very fine and popular variety.

William Copeland—Lilac rose flowers produced on a long stem; very early.



Darwin Tulip
MRS. STANLEY

DARWIN TULIPS

(Continued)

Price on all
Darwin Tulips,
8 cents each,
75 cents per dozen,
\$6.00 per 100
except
where noted.

William Pitt—Brilliant dark scarlet; large flower of distinct color and great beauty; an excellent bedding variety. 10 cents each, \$1.00 per dozen, \$8.00 per 100.

Yolande—Bright rosy pink, shaded salmon; a beautiful colored, perfectly shaped flower on a tall stem. 20 cents each, \$2.00 per dozen.

Zulu—Rich purple black; large egg-shaped flower of a very distinct shape; fine for border and pot culture. 10 cents each, \$1.00 per dozen, \$8.00 per 100.

SINGLE EARLY TULIPS

We offer only the most distinct and pleasing sorts, all of which have been thoroughly tried out in California, Oregon, Washington and many other states.

- Price of all early Tulips, except where noted, 6 cents each, 60 cents per dozen, postpaid.**
- Artus**—Brilliant scarlet with clear yellow center; a splendid bedder.
- Belle Alliance**—Scarlet; large; sweet scented.
- Brilliant Star**—Brilliant vermilion scarlet; very early; enormous size. 8 cents each, 75 cents per dozen.
- Buttercup**—Golden yellow; the earliest of all yellow tulips; the flower is long and narrow with pointed petals.
- Canary Bird**—Golden yellow; very early.
- Cardinal's Hat**—Dark brownish red; fine for bedding.
- Chrysolora**—Pure golden yellow; very good for bedding.
- Cottage Maid**—White bordered with pink; very fine.
- Couleur Cardinal**—Brilliant crimson; very large with a tall strong stem; one of the finest bedding varieties. 8 cents each, 75 cents per dozen.
- Crimson Brilliant**—Scarlet; produces a perfect flower.
- Cullinan**—Yellowish white with delicate rose border; a splendid bedder.
- De Wet**—Orange yellow; large flower of erect habit. 20 cents each, \$2.00 per dozen.
- Duchesse De Parma**—Orange red margined deep yellow on a very tall strong stem.
- Dusart**—Carmine scarlet; very large wide open flower; good bedder and keeps its color well.
- Flamingo**—White flaked carmine rose; very artistic flower with more or less crinkled petals.
- Golden Queen**—Golden yellow; produces fine shaped large flowers on long strong stems; very suitable for bedding.
- Gold Finch**—Deep yellow; an excellent variety.
- Ibis**—Dark brilliant pink; extra large; very fine.
- Jenny**—Beautiful silky carmine rose; one of the most brilliant for bedding.
- Joost Van Vondel**—Deep cherry red feathered white; long large flower of beautiful shape; an excellent variety for beds or borders.
- Keizerskroon**—Carmine scarlet with broad yellow border; a bed of these big showy flowers on their strong tall stems is a glorious sight; one of the finest varieties.
- King of the Yellows**—Deep golden yellow; one of the earliest yellows; the flowers are egg shaped on long stems; excellent for cutting.
- Lady Boreel**—Intense white; the largest of the white early tulips; very desirable for bedding.
- La Reine**—White, slightly shaded rose; one of the best and most used of the early tulips.
- La Reine Maximus**—White, faintly flushed pale rose; a fine bedding variety; extra large flowers. 8 cents each, 75 cents per dozen.
- La Riante**—Most lovely bright pink shaded with carmine rose; one of the most attractive tulips and a grand bedder; early.

SINGLE EARLY TULIPS—Continued.

- Le Matelas**—Deep rose pink, tipped creamy white; one of the earliest varieties.
- Maes**—Bright scarlet of immense size; an excellent variety for bedding purposes.
- McKinley**—Inside orange red, outside rosy red, shaded orange; a very unique color; a very showy bedding variety. 8 cents each, 75 cents per dozen.
- Mon Tresor**—Golden yellow; much used for growing in pots and pans; an excellent variety.
- Pelican**—Pure white; an elegant flower of enormous size.
- Pink Beauty**—Vivid cherry rose, center of petals white; a flower of unsurpassed size and beauty; a grand bedding variety. 8 cents each, 75 cents per dozen.
- Pottebakker Scarlet**—Rich scarlet with a yellow center; long stem; very effective.
- Pottebakker White**—Pure white; very early; large cup-shaped flower.
- Pottebakker Yellow**—Pure yellow; long stem.
- Primrose Queen**—Soft primrose; on the outside clear yellow, inside entirely different from other yellow varieties; very effective.
- Prince of Austria**—Brilliant orange scarlet, yellow base; large and very showy flower; deliciously scented; an excellent variety which we highly recommend.
- Proserpine**—Bright rose suffused with purple; an enormous flower of full globular shape; very handsome; deliciously scented.
- Prosperity**—Most delicate rose pink; a splendid new variety; very handsome. 8 cents each, 75 cents per dozen.
- Queen of the Netherlands**—Very delicate blush pink; large globe-shaped flower; an excellent bedder.
- Rising Sun**—Golden yellow; a flower of enormous size grown on very tall strong stems; beautiful for bedding. 20 cents each, \$2.00 per dozen.
- Rose Aplatie**—Blush white, edged pale rose; delicately colored.
- Rose Grisdelin**—Rose flushed with pink; fine shaped flowers.
- Rose Luisante**—Dark silky rose; one of the most popular varieties for growing in pots and pans; strong stem which holds the big flower up perfectly.
- Rose Precoce**—Light rose producing a long loose flower; fine for pot culture; extra early. 8 cents each, 75 cents per dozen.
- Sir Thos. Lipton**—Brilliant crimson; very handsome; large cup-shaped flower of great brilliancy. 8 cents each, 75 cents per dozen.
- Thos. Moore**—Dull rosy terra cotta shading at edges to dull orange yellow; the most popular of the odd colored tulips; fine shaped flower; we highly recommend this variety.
- Van Berghem**—Deep cherry flushed white; a grand bedding tulip.
- Vermilion Brilliant**—Brilliant scarlet with yellow base; this is one of the showiest bedders of the early tulips; produces very large well-shaped flowers. 8 cents each, 75 cents per dozen.
- White Beauty**—Pure white; the most beautiful and best white tulip; splendid when planted in combination with Pink Beauty. 15 cents each, \$1.50 per dozen.
- White Hawk**—Pure white; very large globular flowers of great substance well formed with crinkled petals; a grand bedding variety.
- White Swan**—Pure white; large handsome egg-shaped flower; makes an excellent cut flower.
- Yellow Prince**—Rich yellow; very sweet scented.

DOUBLE EARLY TULIPS

The following selection of Double Early Tulips comprise the most distinct varieties which have been tested out under Pacific Coast conditions.

8 cents each, 75 cents per dozen, except where noted.

- Boule De Neige**—White; large peony like flower; fine for growing in pots.
- Cocheneal**—Fiery scarlet; good keeper; semi-double flower.
- Couronne D'or**—Yellow flushed orange; produces a large magnificent flower; fine for cutting or pot culture.
- El Toreador**—Reddish brown with buff yellow border; one of the most conspicuous of the double tulips; very strong stem; excellent for pot culture.
- Golden King**—Soft canary yellow shaded deeper yellow; very large and beautiful flower of superb effect for bedding.
- Imperator Rubrorum**—Glowing scarlet; a much used and excellent variety.
- La Candeur**—Pure white; very fine bedder; remains in flower a long time.
- Lac Van Haarlem**—Brilliant rosy violet; very unique double showy flower; good bedder.
- Leo XIII**—Red and yellow conspicuous flower.
- Matador**—Glowing scarlet with purple on the outside of the petals; one of the most handsome of the red tulips; excellent for cutting.
- Mr. Van Der Hoef**—Golden yellow; a beauty which holds its beautiful pure yellow color as long as the flowers last. Splendid novelty. \$1.00 each.
- Mr. Van Tubergen**—Beautiful golden yellow; an excellent variety. Grand novelty. \$1.00 each.
- Murillo**—Beautiful blush pink; very popular variety; excellent for bedding.
- Peach Blossom**—Bright rose; the largest and most perfect of all double tulips; very attractive. One of the finest novelties, \$1.00 each.
- Pieneman**—Brilliant brownish red with yellow border; very large and double; a splendid variety.
- Rex Rubrorum**—Scarlet; an excellent bedding sort.
- Rubra Maxima**—Deep red; splendid early bedding variety; very attractive.
- Salvator Rosa**—Beautiful deep rose; extra fine; highly recommended.
- Schoonoord**—Snow white; one of the best double white tulips.
- Tea Rose**—Soft pale yellow; a very distinct color in double tulips; excellent for bedding or for pot culture.
- Thalia**—Scarlet; very double; produces immense flowers.
- Virginia**—Beautiful deep pink; the earliest and one of the largest double tulips.
- Vuurbaak**—Brilliant scarlet with slight flush of orange when fully open; one of the best scarlets and particularly adapted for bedding owing to its strong stem and sturdy growth.

MAY-FLOWERING OR COTTAGE TULIPS

The Cottage Tulips are much used for bedding and massing in the perennial border and if left undisturbed will increase from year to year. All colors imaginable are found in this group and are unsurpassed for garden decoration. They are long stemmed and keep remarkably well, making them excellent cut flowers.

We offer a very select collection of the most distinct and desirable sorts. Our Bulbs will be found unusually large and of exceptional quality.

Prices on all Cottage Tulips 6 cents each, 60 cents per dozen, except where noted.

- Bouton D'or**—Golden yellow with black anthers; a very showy bedder and excellent for cutting.
- Carnation**—Snow white turning to rose; extra fine.
- Columbus**—Bright yellow with scarlet stripes and pointed petals; an exceedingly showy flower.
- Crested Crown**—Bright red with yellow and green stripes crested on the outside; a very distinct flower.
- Ellen Willmott**—Primrose yellow; one of the finest May-flowering tulips; the flower is long and narrow on a very tall straight stem.
- Fulgens**—Dark scarlet; long recurving petals; very tall.
- Gesneriana Lutea**—Golden yellow; one of the finest tulips for garden decoration; the flowers are enormous of purest golden yellow carried on a strong stem; excellent for bedding.
- Gesneriana Lutea Pallida**—Pale yellow; enormous flower; extra fine.
- Gesneriana Spathulata**—Dazzling scarlet with blue base; very showy.
- Glare of the Garden**—Dazzling scarlet; a real giant among the late tulips; very long stems. 10 cents each, \$1.00 per dozen.
- Golden Crown**—Yellow, bordered and feathered orange red.
- Inglescomb Pink**—Soft rose with a salmon flush; a very popular variety for bedding and considered one of the finest of the Cottage Tulips.
- Inglescomb Scarlet**—Brilliant scarlet with black base; extra large flower; very showy.
- Inglescomb Yellow**—Canary yellow; a large globe shape; very beautiful flower. (Called the Yellow Darwin).
- Isabella**—Creamy white shaded salmon rose; long flower on medium sized stem; it makes the best showing when planted by itself.
- La Candeur**—White, changing to soft rose; large globe-shaped flower.
- La Merveille**—Orange cherry flushed rose with yellow base; very attractive.
- Leghorn Bonnett**—Chrome yellow; loose shape; very beautiful.
- Moonlight**—Soft yellow; extra large; exceedingly handsome.
- Mrs. Moon**—Golden yellow; one of the most beautiful of all late tulips; petals slightly reflexing forming a large and beautiful flower on a strong stem. 8 cents each, 75 cents per doz.

MAY-FLOWERING OR COTTAGE TULIPS

(Continued)

- Parisian Yellow**—Bright yellow with a deeper center; pointed petals.
- Picotee**—White, margined rose pink; medium sized flower with gracefully reflexing petals; one of the most popular late tulips for cutting and bedding.
- Pride of Inglescomb**—White, edged carmine rose; long pointed flower; beautiful. 10 cents each, \$1.00 per dozen.
- Retroflexa**—Yellow; elegantly reflexing petals; very handsome, and splendid for cutting.
- Royal White**—Pure white with primrose center; largest late white tulip.
- The Fawn**—Pale rosy fawn changing to blush rose; the flower is egg shaped on a good stem; large and very beautiful.
- Vitellina**—Light sulphur yellow becoming almost white; large beautiful flower on a strong stem.
- Walter T. Ware**—Very dark yolk-yellow, the darkest yellow color; a wonderful flower. 20 cents each, \$2.00 per dozen.
- Waterlilly**—Pure white nymphaea like flower; tall and handsome. 20 cents each, \$2.00 per dozen.
- Yellow Picotee**—Light rose with soft yellow in center of petals; very fine. 20 cents each, \$2.00 per dozen.

The Crocus

The Crocus is one of the earliest flowers to open in the spring. They are perfectly hardy and may be left in the ground for several years without being disturbed. A very striking effect may be had by planting in masses of one or more colors; another effective method is to scatter them over the lawn by digging up a small piece of sod here and there and placing one or two bulbs in each spot. They also may be used for growing in pots or pans. We list below some of the finest and most beautiful varieties grown.

All Crocus bulbs 20 cents per dozen,
\$2.00 per 100

Blue Varieties

- Albion**—Large purple.
- Baron Van Brunow**—Purplish mauve.
- Maxmiliaan**—Pure porcelain blue; largest of all.
- President Lincoln**—
- Purpurea Grandiflora**—Purple; one of the best.

Striped

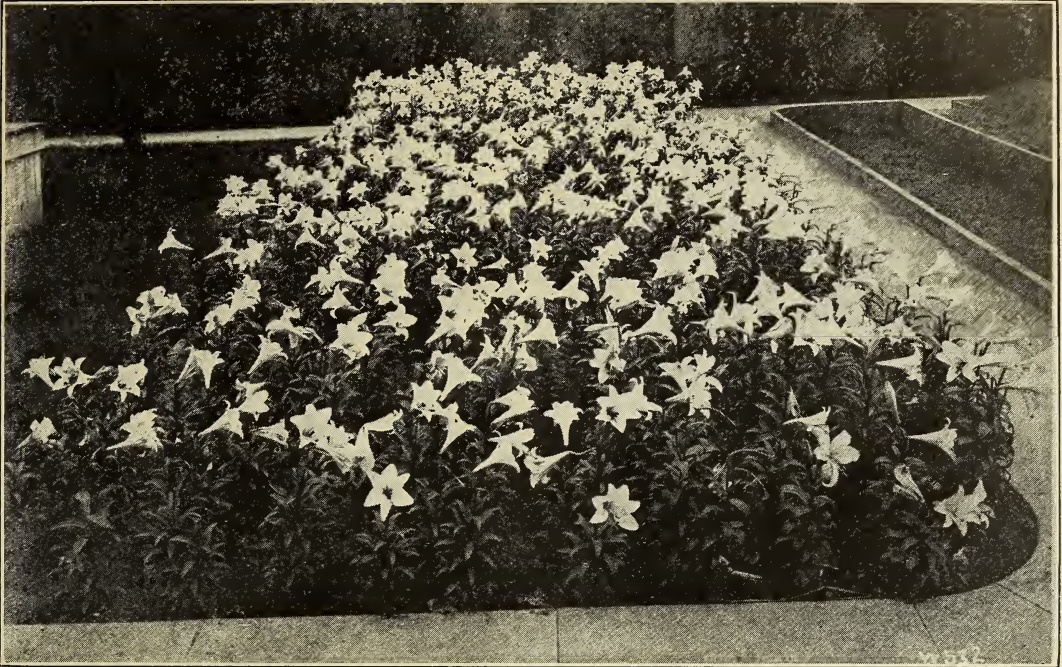
- La Majestueuse**—White, striped purple.
- Melpomene**—One of the largest striped varieties.
- Sir Walter Scott**—White, striped purple; very large.

White

- King of the Whites**—The best and largest white.
- Montblanc**—An excellent pure white variety.

Yellow

- Large Yellow**—Beautiful yellow; very large.



Lilium Harissii, as Grown at the Cottage Gardens Bulb Farms, Eureka, California

Easter Lillies

The Bermuda variety of *Lilium Longiflorum*, commonly known as the Easter Lily, is usually grown exclusively as a florist's flower for forcing. In the mild climates of the Pacific Coast and along the Gulf of Mexico, it is perfectly hardy and can be easily naturalized and will increase in size and beauty for many years.

Lilium Longiflorum, Bermuda Variety—
Hardy on the Pacific Coast and south of
the Ohio River. 25 cents each, \$2.50 per
dozen.

Lilium Formosum Gigantum—Black stem
variety. 25 cents each, \$2.50 per dozen.

Japanese Lillies

Lilium Lancifolium

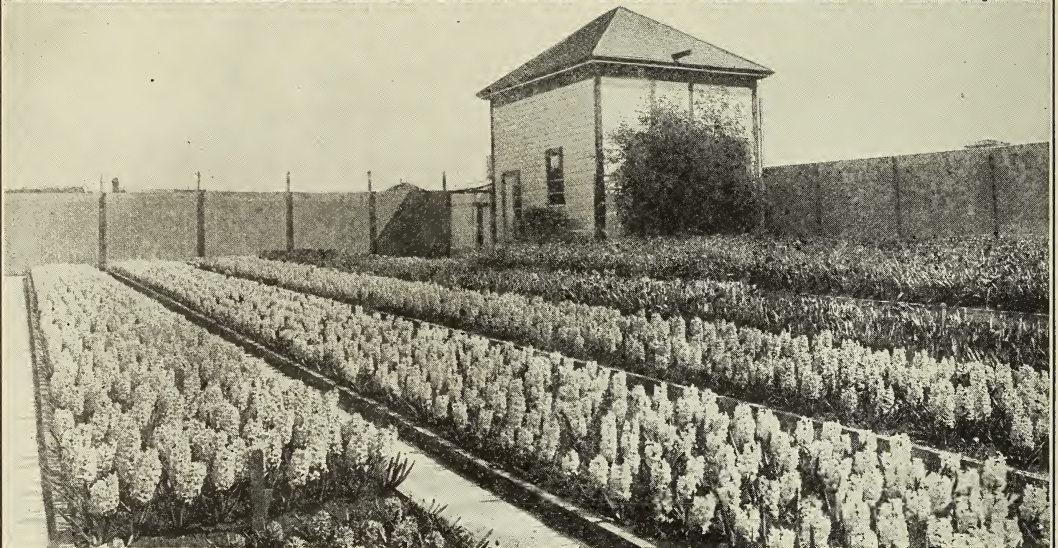
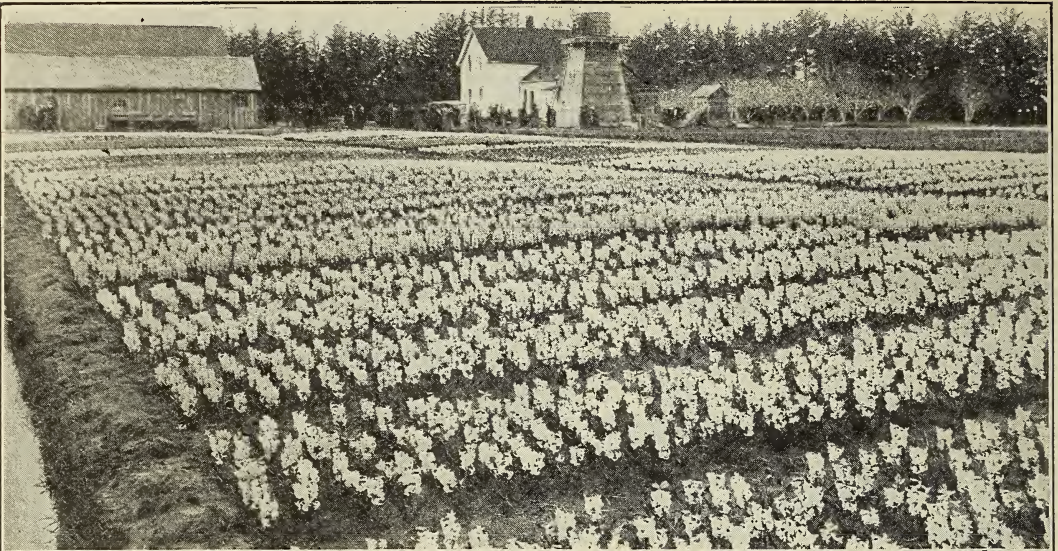
The varieties of *Lilium Lancifolium* are the hardiest and most persistent of the Japanese section of the lily family. They are vigorous, healthy growers, profuse bloomers and the flowers are striking and richly colored. The best of all the large flowering lillies for naturalizing. Hardy throughout the United States.

Album—20 cents each, \$2.00 per dozen.

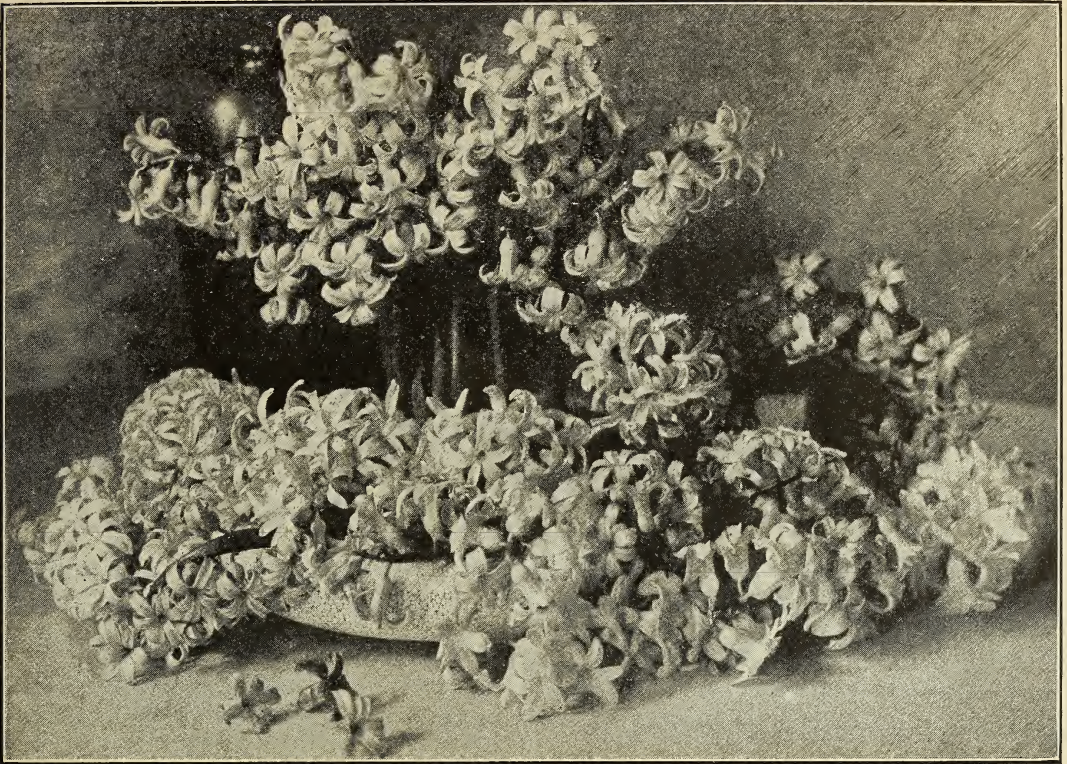
Rubrum—20 cents each, \$2.00 per dozen.

Roseum—20 cents each, \$2.00 per dozen.

All the *Lancifolium* varieties are very hardy and exceedingly free bloomers.



Hyacinth Fields, Cottage Gardens Bulb Farms, Humboldt County, California



Hyacinths

For formal effect in beds no flower can compare with the Hyacinth. The wonderful beauty of their dainty wax like flowers produced on immense trusses in various colors and shades of pink, red, blue, lavender, yellow and white are a never-ending delight to all who see them. In addition to their suitability for outdoor planting they are also much used and well adapted for growing in pots or glasses indoors. The extra choice varieties we grow and offer are large solid first-size bulbs that will produce those handsome compact blossoms so much desired.

Forcing Hyacinths in Pots

In potting Hyacinths a quarter of an inch of sharp sand under the base of the bulb may be used to advantage; after placing the bulb in position, fill up around the bulb, firming the soil moderately. When finished the top of the bulb should just appear above the surface of the soil. After potting place the pots in a cold situation, an open shed or cold frame where the pots are well protected from the sun's heat is best. Water them well and when the top of the pots are fairly dried out cover with a foot of clean, coarse ashes, cocoanut fiber or pulverized Belgian Peat. Place an inverted 3-inch flower pot over the crown of each Hyacinth bulb to prevent rotting and discoloration of the tips of the foliage through contact with the covering material. Allow the pots to stand six weeks undisturbed, then examine, and those which are well rooted may be moved to cold frame or cool greenhouse, placed close to the glass, until the foliage becomes green, after which they may be moved to warmer quarters for forcing. If the heat is increased

gradually day by day and the forcing proceeds slowly with plenty of ventilation during the warmer portions of the day, larger and better colored blooms and stronger stems and spikes will be secured.

Hyacinth Culture in Beds and Borders

Hyacinths should be planted 4 inches deep in very light sandy soils, 3 inches deep in the heavier loamy soils; that is, the top or crown of the bulb should be 3 to 4 inches below the surface of the soil, in squares about 6 inches apart each way. After planting, firm the soil moderately, then round off the surface of the bed to facilitate the running off of heavy rains. Cover the beds with a mulching of coarse litter to protect from severe weather and to prevent high winds blowing off the soil and exposing the bulbs.

SINGLE BLUE

Prices of all Hyacinth Bulbs 20 cents each, \$2.00 per dozen, \$15.00 per 100 except where noted.

- Bismark**—Bright blue; one of the earliest and best of the blue Hyacinths. 25 cents each, \$2.50 per dozen.
- Electra**—Light silvery blue; flowers of enormous size; stands up straight and makes an excellent bedder.
- Enchantress**—Porcelain blue; extra large spike on a strong stem.
- Grand Maitre**—Deep lavender blue; extra large perfect shaped truss; fine for bedding.
- Johan**—Porcelain blue; splendid bedder; extra large truss.
- King of the Blues**—Rich dark blue; one of the largest flowers existing and very compact.
- Marie**—Dark purplish blue; very early; good for bedding.
- Potgieter**—Very light blue; fine truss; good for forcing.
- Queen of the Blues**—Lovely pale porcelain; large spike; splendid flower.
- Schotel**—Light blue; large bells and spike.

SINGLE RED AND ROSE

- Cardinal Wiseman**—Dark pink; splendid for growing in pots; very compact.
- Garibaldi**—Brilliant red; very early; large compact truss.
- General De Wet**—Light pink; splendid for bedding as well as for forcing; forms a perfect spike. 25 cents each, \$2.50 per dozen.
- Gertrude**—Dark pink; one of the most popular hyacinths; very large truss; fine for pot culture.
- Gigantea**—Blush pink; immense flower; very beautiful.
- Jacques**—Rose pink; enormous spike of perfect shape; excellent for bedding.

Lady Derby—Light rose pink; a leader as a pot hyacinth; produces a perfect flower of a most lovely shade of pink. 25 cents each, \$2.50 per dozen.

La Victoire—Brilliant light red; the best of the new red varieties; excellent for bedding.

Maria Cornelia—Blush pink; very early forcer.

Moreno—Waxy pink; one of the earliest pinks; large bells; fine flowers.

Queen of the Pinks—Brilliant pink; one of the finest pink hyacinths which we strongly recommend. 25 cents each, \$2.50 per doz.

Rose A'Merveille—Bright pink; an excellent variety for bedding.

SINGLE WHITE

Arentine Arendsen—Snow white; well-filled perfect shaped spike; very early. 25 cents each, \$2.50 per dozen.

Baroness Van Tuyl—Pure white; large truss; an excellent variety.

British Queen—Pure white; large flower; very early.

Grandeur A'Merveille—Blush white; large handsome truss; splendid for bedding.

La Grandesse—Snow white; the queen of the white hyacinths; very large.

L'Innocence—Pure white; very early; extra large truss.

Mr. Plimsoll—Blush white; large; extra fine.

SINGLE YELLOW

City of Haarlem—Golden yellow; one of the best yellows; large truss well formed. 25 cents each, \$2.50 per dozen.

MacMahon—Pure yellow; large broad spike. 25 cents each, \$2.50 per dozen.

Yellow Hammer—Golden yellow; very popular yellow; compact; ball shaped truss; early. 25 cents each, \$2.50 per dozen.

Herbaceous Peonies

Within the past ten years this magnificent section of hardy herbaceous flowering plants has been brought into very prominent notice because of the general improvement in varieties of comparatively recent origin. In these newer sorts the flowers have attained immense proportions, reaching in some instances the large size of seven to nine inches in diameter and five to six inches in depth. The range of color is also so varied that almost every tint of pink, white, red, crimson and even yellow is comprised in the list. The vigor and habit of the plants have been so improved that stems two and one-half to four feet in length, and sufficiently strong to properly support the immense blooms, are now grown. There is an element of practical, permanent value in the Peony; that is, the plants, once purchased and planted in suitable soil, continue to increase in size and profusion of bloom, and pay a generous annual dividend in the way of an enormous crop of magnificent, deliciously fragrant blooms that are unsurpassed for decorating purposes. The popular use of Peonies for decorative purposes is amply evidenced by the greatly increasing sale of the cut blooms in the large cities, where thousands of splendid flowers find a ready market at handsome prices. This increased demand may be accounted for by the introduction of more recent varieties, which are wonderful improvements over the older sorts.

Preparation of Soil for Peonies, and Culture

The Peony is a gross feeder and the richest soil is none too good. They furnish the strongest stems and the largest and most desirable flowers when planted in situations where the soil retains a moderate degree of dampness, and they are particularly adapted to planting in the vicinity of ponds or along the borders of streams where capillary attraction will furnish the roots with a steady supply of moisture. They should, however, be planted sufficiently far away from the border of streams or ponds to avoid flooding, or water standing upon the plants, and the soil should be so drained as to avoid any tendency of swampy nature.

Where the finest flowers are desired, the soil for the Peony bed should be prepared as follows: An excavation the full size of the bed should be made two or three feet in depth, according to the character of the subsoil. If the subsoil is of a loamy nature, and of such texture as will retain moisture nicely, and admit of the growth of an abundant root system, the bed may be excavated to the depth of two feet, and a layer six inches in thickness of thoroughly well-rotted cow manure should be spread on the bottom, and well spaded in. If the soil taken out is of a stiff, clayey nature it should be lightened by the addition of sand, leaf mold and thoroughly well-rotted manure, using in bulk one-third of the sand, leaf mold, and manure to two-thirds soil. This should be turned over two or three times, so that all of the ingredients will become evenly mixed and incorporated throughout the mass. Then fill up the excavation with this prepared soil, rounding it up at the center, which should stand about four inches above the level of the lawn. In setting the plants, abundant room to allow them to develop into large clumps must be given. Each plant should be afforded a space equaling a circle of three feet in diameter for its development. In setting the plants, space the crowns two and one-half to three inches below the surface of the soil, and firm the earth well around the roots. After the bed is planted it should be mulched with three or four inches of coarse, strawy manure, or that which contains a large proportion of forest leaves. In case the soil at the bottom of the bed is of a very light, sandy nature, or a dense, stiff clay, or coarse, rocky gravel, the excavation should be continued to three feet, and this poor soil discarded and the entire bed filled with the prepared compost.

Time for Planting Peonies

On the Pacific Coast Peonies may be planted any time from the beginning of the rainy season to the middle of January. East of the Rocky mountains the best time for planting is from the 25th of August to the middle of September.

After Cultivation

There is no plant that will thrive, increasing in strength and beauty every year, with as little attention as the Peony. The third year after planting the ground will be entirely occupied and densely shaded by the foliage, so that comparatively few weeds will grow, and these may be easily removed. Each fall, the tops of the Peonies should be cut off about three inches above the soil, and may be thrown back upon the bed to serve as mulching during the winter time. This should be augmented by a liberal dressing of coarse manure. In the spring this mulching should be shaken up and the coarse parts removed from the bed, and the remaining fine stuff spaded into the soil to the depth of five or six inches, and the surface stirred around the crowns of the plants, care being taken not to break, mar or disturb the dormant crown buds.

During the seasons of extreme drought in California, the growth of the Peony plants may be much improved by drenching the beds thoroughly with water once or twice a week. The hose can be turned onto the bed and allowed to run until the soil is saturated to the depth of twelve or fourteen inches.

- Boule de Neige**—Calot, 1862. Milk white, flecked with crimson. Very large, globular and compact; tall, erect growth; early midseason. (Similar to but earlier than Mons. Dupont). 50 cents each.
- Baroness Schroeder**—Kelway. Flesh white fading to milk white. Large, globular, rose type; very fragrant; tall, strong. Midseason. \$1.00 each.
- Couronne d'Or**—Calot, 1873. Pure white, tipped with carmine; large flat rose type; medium height. Late. 50 cents each.
- Delicatissima**—Very pale lilac rose; large rose type; very strong vigorous growth; medium height. Midseason. 50 cents each.
- Duchesse de Nemours**—Guerin, 1840. Clear violet, center shaded lilac. Midseason. \$1.00 each.
- Edulis Superba**—Lemon, 1824. Dark pink, even color; large, loose, flat when fully open; fragrant; strong upright growth. Early. 50 cents each.
- Festiva Maxima**—Miellez, 1851. Paper white with crimson markings in center. Very large and full, rose type; very tall, strong growth. Early. 50 cents each.
- Lamartine**—Calot, 1860. (Also called Gigantea.) Pale lilac rose, darker center; very large, loose, irregular, rose shape; very fragrant. Early. 75 cents each.
- Livingstone**—Crousse, 1879. Pale lilac rose, silver tipped, some carmine spots; large, compact, rose type; tall; very strong stems. Late. 50 cents each.
- Marie Lemoine**—Calot, 1869. Pure white with cream white center; large, very compact, rose type; pleasing fragrance; medium height; extra strong stems. Very late. 50 cents each.
- Mme. Calot**—Miellez, 1856. Very pale pink center, shaded darker, silver tint. Very large, rose type; very fragrant; tall, strong, upright. Early. 50 cents each.
- Mme. Crousse**—Calot, 1866. Pure white with faint crimson markings; large globular crown type; fragrant; medium height. Midseason. 50 cents each.
- Mme. de Verneville**—Crousse, 1885. Pure white, center tipped with carmine; very large, full, bomb shape; fragrant; medium height; strong growth. Early. 50 cents each.
- Mme. Forel**—Crousse, 1881. Violet rose, silver tipped center; very large, compact, rose type; fragrant; tall, strong growth. Late. 50 cents each.
- Mons. Jules Elie**—Crousse, 1888. Pale lilac rose, silvery reflex; very large, compact, globular; very fragrant; tall, vigorous growth. Early. 75 cents each.
- Octave Demay**—Calot, 1867. Very pale pink, collar almost white; very large, flat, crown type; fragrant; very dwarf plant with strong, thick stems. Early. \$1.00 each.
- Pierre Dessert**—Dessert & Michin, 1890. Dark purplish crimson; very large, compact rose type; tall, strong stems. Early. \$1.00 each.
- Venus**—Kelway. Very delicate pale pink, lighter collar. Very large, high, compact crown; very fragrant; tall, erect. Midseason. 75 cents each.



Sweet Pea Illuminator, as Grown at the Cottage Gardens Nurseries, Eureka, California

Sweet Peas

All the praise that can be showered on all other flowers is richly deserved by the Sweet Pea alone as grown in Eureka, California. Just think of it, ye Sweet Pea Enthusiasts, outdoor-grown Sweet Peas, with flower stems twelve to eighteen inches long, three and four blooms to the stem, blooms often two to two and one-quarter inches in diameter—a sheet of color growing on vines twelve to twenty feet in height—grown outdoors, mind you! How do we do it? Why, just plant them and take care of them—

that's all. Nature does the rest. Nearly every house-yard in Humboldt County, be it ever so humble, boasts of brilliantly-colored Sweet Peas in profusion.

SWEET PEA CULTURE

Soil

Any deep, rich, well-drained garden soil will grow Sweet Peas successfully.

Fertilizers

Cow manure dug deeply into the bottom of a trench 18 inches wide and one foot deep gives excellent results. Raw bone dust scattered over the surface on a strip 2 feet wide so as to thoroughly whiten the ground and then worked in 4 to 6 inches deep, gives best results of all concentrated fertilizers. Do not over fertilize. Avoid a too rank, succulent growth.

Fall Sowing

In California the best results are obtained by sowing the seed about the middle of October up to November 1st. November 15th, even December 1st, is not too late. Early fall sowing produces a much stronger, firmer growth and larger blooms of better substance on much longer, stronger stems, and far greater profusion of bloom. The plants are deeper rooted, will stand drought and heat better and remain longer in bloom.

In the Northern States

Seeds may be sown in November before the ground freezes for the winter. Then cover the frozen soil with a heavy mulching of rough litter, leaves, coarse manure, etc. The seed will barely germinate, the young plants remaining dormant till spring, when they will start an early vigorous growth. The litter must be removed very early in the spring.

Wintering Fall-Sown Seed Under Narrow Frames

Where winters are not too severe, seed sown about October 10th to 20th may be protected with narrow board frames covered with glass. The seed will germinate and plants be well above ground before severe freezing weather sets in, at which time the glass should be put on. During bright sunshine days give air whenever possible to insure stocky growth and avoid drawing the plants. Remove the glass during first mild spring days. This treatment secures a fine stand of strong, vigorous plants and assures a long flowering season.

In the Southern States

Sow the early flowering varieties in all frostless sections the latter part of September. They will commence blooming in December, continuing till May.

In Southern California, October and November sowing of early varieties will bloom from early March till August by preventing all setting of seeds on the *vines*.

Irrigation

Is most important in any climate where dry, protracted warm spells occur. Run a stream of water in a narrow ditch about a foot away from the base of the plants. Soak the ground thoroughly once a week whenever the weather is dry. Keep the flowers cut. Allow no seeds to form. Thin

the plants from 12 to 16 inches apart according to richness of soil. Do not allow the plants to wilt from lack of moisture. If the plants show lack of food, work in a light dressing of sheep manure along the irrigation ditch. Keep the surface of the soil lightly cultivated. You will be surprised with the size of blooms, length and strength of stems, and the long duration of blooming period.

Supporting the Vines

Chicken wire, one to one and one-half inch mesh, 5 to 6 feet high, makes the best support for Sweet Pea vines. Stretch taught on 2 by 4 posts, set two and one-half feet in the ground; the end posts being well braced. If the vines are extra vigorous it will be necessary to tie them to the wires with raffia or strong twine.

If the blooms are cut regularly, allowing no seed to form, and the plants supplied with enough water to keep them growing, the vines will reach the tops of the 6-foot trellis in most any temperate climate.

We have grown the common garden peas 10 feet in height at Eureka, and our Spencer Sweet Peas grow uniformly to the height of 12 feet, some varieties making 16 to 20 feet growth in favorable seasons.

We offer only a select list of Spencer varieties. All have been tested by two to three years' culture in our trial grounds.

PINK SHADES

Margaret Atlee—Warm salmon-pink suffused over a cream ground, deepening to bright buff at base of standard and wings. An entirely new shade of pink. Blooms extra large, 2 to 2½ inches across, often duplexed. Usually 4 blooms on exceptionally strong stems, 12 to 18 inches and occasionally 20 inches long at Eureka. Profuse bloomer; habit extra strong, vigorous and healthy. A worthy rival of New Miriam Beaver with us. Pkt., 10 cents; oz., 40 cents.

Hercules—We consider this the most vigorous grower, profuse bloomer, strongest and longest stemmed of all the Pink Spencer Sweet Peas. Flowers unusually large. Nearly always 4 to the stem, which are 14 to 18 and 20 inches long under ordinary good culture. Color clear pink evenly distributed over both standard and wings. Pkt., 10 cents; oz., 35 cents.

New Miriam Beaver—One of the daintiest and most pleasing shades of pink. Soft salmon on a delicate cream ground. Very evenly colored; very large nicely waved blooms—sometimes duplexed. Stems very long—12 to 18 inches at Eureka. Usually 4 blooms to the stem. Profuse and persistent bloomer. Strong grower; healthy, vigorous plant. Pkt., 10 cents; oz. 40 cts.

Mrs. Hugh Dickson—The best of all the cream pink Spencers. Color light salmon-pink on a delicate cream ground. Very

large blooms, usually 4 on an exceptionally strong stem, 12 to 18 inches long. Profuse, persistent bloomer. Pkt., 10 cents; ounce, 30 cents.

ORANGE AND SALMON SHADES

Illuminator—Brilliant, sparkling orange-salmon. Best of all the salmon type. Large blooms, 3 and 4 on extra fine 12 to 18-inch stems. Vigorous, healthy grower, one of the most profuse bloomers of all Spencers and the most pleasing color of all. Pkt., 10 cents; oz., 40 cents. (See cut)

Helen Lewis—Fine orange-salmon with very bright orange standard. Very large blooms, 3 and 4 on strong 12 to 16-inch stems. Strong, healthy; very vigorous grower; profuse bloomer. Pkt., 10 cents; oz., 30 cents.

SCARLET SHADES

Thomas Stevenson—Brilliant orange-scarlet. Sometimes bleaches in hot sun. At Eureka this is the most profuse bloomer of all the Spencer type. Blooms are large, stems 14 to 18 inches; 3 to 4 blooms to the stem. If planted in a partially shaded situation or shaded with cheesecloth the color is unsurpassed. Pkt., 10 cents; oz., 35 cents.

Vermilion Brilliant—The best brilliant scarlet. Splendid formed bloom, 3 and 4 on 12 to 16-inch stems. Vigorous, healthy habit. A perfect sheet of scarlet the season through. Pkt., 10 cents; oz., 40 cents.

CARMINE, CRIMSON AND RED SHADES

Geo. Herbert Spencer—Bright, rosy crimson, suffused with deeper shades. The color at Eureka may be described as a brilliant rich carmine. Very large blooms, 3 to 4 on 12 to 16-inch strong stems. Healthy, vigorous grower; profuse, persistent bloomer. The best carmine of all. Pkt., 10 cents; oz. 30 cents.

King Edward Spencer—By far the best sun-proof pure red Spencer. Exceptionally large blooms with immense wings. Usually 4 on an extra strong 12 to 16-inch stem. Very vigorous, healthy grower; profuse bloomer. The best of all reds. Pkt., 10 cents; oz., 30 cents.

Marie Corelli—Bright glowing crimson. Large beautifully waved bloom; 3 and sometimes 4 on 12 to 16-inch stems. Exceptionally healthy, vigorous habit; profuse bloomer. Pkt., 10 cents; oz., 50 cents.

Rosabelle—Bright, glowing crimson with white at base of standard and wings. Better than Marie Corelli, which it resembles. The blooms are large, usually 4 on longer, stronger stems. The habit is most vigorous and healthy. Profuse in bloom. We are inclined to name this variety as the best of its class. Pkt., 10 cents; oz., 30 cents.

BLUE

Wedgewood—Deepest blue and best of all the blue Spencers. Sometimes a faint tinge of mauve in the standard. Color brightens as the flower ages. Vigorous grower; profuse bloomer; 3 to 4 large fine frilled blooms on splendid 12 to 16-inch stems. Pkt., 10 cents; oz., 45 cents.

LAVENDER SHADES

Asta Ohn—Soft pinkish lavender self; large beautifully waved blooms, 3 to 4 on stout 12 to 14-inch stems. A charming variety and a most profuse and persistent bloomer. Habit vigorous, healthy and clean. Stands first among the lavenders. Pkt., 10 cents; oz., 30 cents.

New Margaret Madison—Nearly a true lavender. Blooms very large and bold; usually 4 on a very stout 12 to 16-inch stem. Very vigorous habit; profuse and persistent bloomer. Pkt., 10 cents; oz., 40 cents.

WHITE

King White—Easily the best of all the White Spencers. Pure, immaculate white; largest blooms, 3 and 4 on the longest and strongest stems of any white Spencer; most vigorous, healthy grower, unsurpassed bloomer. The 12-foot hedge in our trial grounds was a perfect snow-bank the entire blooming season. Outclasses all other white Spencers. Pkt., 10 cents; oz., 40 cents.

Constance Hinton—Immense creamy white bloom; usually 4 on the strongest of all stems, 12 to 14 inches. Very vigorous and healthy; exceedingly promising. Pkt., 10 cents; oz., 45 cents.

VARIOUS SHADES

Nubian—Deep, rich chocolate maroon. The best of the very dark flowered Spencers. Immense bold flowers, invariably 4 on unusually stout 12 to 18 and sometimes 20-inch stems. The most profuse and persistent bloomer and healthiest grower of all the dark Spencers. Pkt., 10 cents; oz., 40 cents.

Apple Blossom Spencer—Large, bold flowers on extra fine 12 to 16-inch stems, 3 and sometimes 4 blooms. Standard bright rose; wings primrose fading to blush white. A unique color combination; habit exceptionally robust and healthy; profuse, persistent bloomer. The best of its class. Pkt., 10 cents; oz., 30 cents.

Dobbie's Royal Purple—The only true purple that holds its color true. The most vigorous grower of all the Sweet Pea family. More vigorous than Hercules; color rich royal purple; stems 12 to 18, often 20 inches; extra strong, carrying 4 immense blooms as a rule. The strongest grower and an unsurpassed bloomer. Covered with a sheet of flowers the season through. In our judgment the only purple to grow. Pkt., 15 cents, oz., \$1.00.

SPECIAL MIXTURE OF THE ABOVE VARIETIES

This is a well-balanced mixture of the above named varieties which we can highly recommend to those who wish large quantities of bloom both for cutting and garden effect. The stock has been grown under our own personal supervision. No better obtainable. Pkt., 10 cents; oz., 30 cents; lb., \$2.50.

ORDER on this page HOLLAND BULBS

Cottage Garden Nurseries, Inc. give no warranty, express or implied, as to description, quality, productiveness, or any other matter of any seeds, bulbs, plants or trees they send out, and will be in no way responsible for the crop. If the purchaser does not accept goods on these terms, they are at once to be returned.

Cottage Garden Nurseries, Inc.

HUMBOLDT COUNTY
EUREKA, CALIFORNIA

Your Name (MR., MISS) Street Address or No. Rural Delivery Post Office County State Forward this Order by Station or Express Office (Only if different from P. O.)	Date 191..... Amount Enclosed P. O. Order - \$..... Postage Stamps \$..... Draft or Check \$..... Coin - - - \$..... <hr style="border: 1px solid black;"/> Our Order No.
---	--

Whenever you write us, always give your full name and address. Write name **very plainly**. State how to forward—whether by freight, express or mail.

ALL BULBS AND SEEDS POSTPAID BY MAIL

We mail and pay postage on all seeds in PACKETS, OUNCES, and ¼ POUNDS purchased from this Catalogue, also on all bulbs except when otherwise noted.

NUMBER	BULBS ONLY	PRICE
Amount carried forward,		

Post Office Department

No. _____

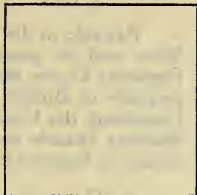
THIRD ASSISTANT POSTMASTER GENERAL

DIVISION OF MONEY ORDERS

Stamp of Issuing Office

The Postmaster
will insert

DOLLARS	CENTS



here _____
the office drawn on, when the office named by
the remitter in the body of this application is not a Money Order Office.

Spaces above this line are for the Postmaster's record, to be filled in by him.

Application for Domestic Money Order

Spaces below to be filled in by purchaser, or, if necessary,
by another person for him.

Amount

_____ Dollars _____ Cents

Pay to
Order of }

COTTAGE GARDENS NURSERIES, Inc.

(Name of person or firm for whom order is intended)

POST OFFICE BOX 48

Whose
Address
is }

No. _____ **2301 C STREET** _____ Street

Post
Office }

EUREKA, HUMBOLDT COUNTY

State _____ **CALIFORNIA**

Sent by _____
(Name of Sender)

Address
of
sender } No. _____ Street

PURCHASER MUST SEND ORDER AND COUPON TO PAYEE

Fees for Domestic Money Orders

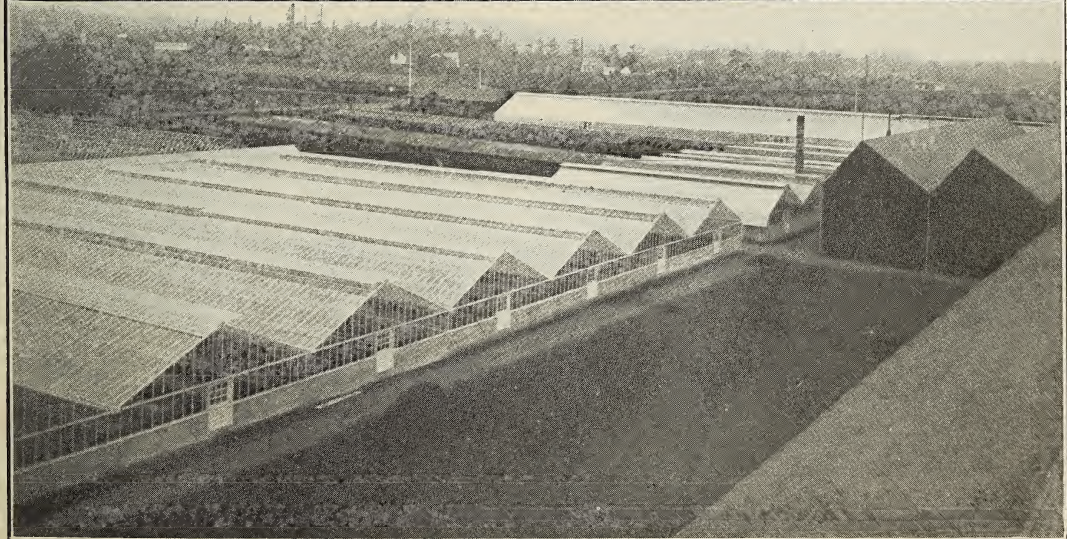
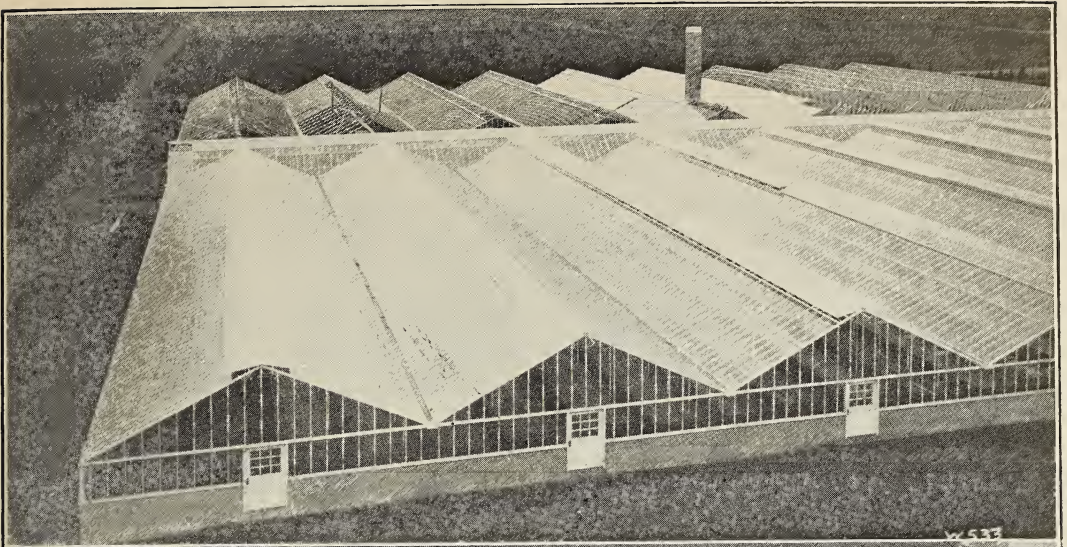
Payable in the United States (which includes Hawaii and Porto Rico) and its possessions comprising the Canal Zone (Isthmus of Panama), Guam, the Philippines and Tutuila, Samoa; also for Orders payable in British Guiana, British Honduras, Canada, Cuba, Newfoundland, the United States Postal Agency at Shanghai (China), the Bahama Islands and certain other Islands in the West Indies mentioned in Register of Money Order Post Offices.

For Orders From \$ 0.01 to \$ 2.50	3 cents.
From \$ 2.51 to \$ 5.00	5 cents.
From \$ 5.01 to \$ 10.00	8 cents.
From \$10.01 to \$ 20.00	10 cents.
From \$20.01 to \$ 30.00	12 cents.
From \$30.01 to \$ 40.00	15 cents.
From \$40.01 to \$ 50.00	18 cents.
From \$50.01 to \$ 60.00	20 cents.
From \$60.01 to \$ 75.00	25 cents.
From \$75.01 to \$100.00	30 cents.

Memoranda of Issuing Postmaster:

NOTE—The Maximum amount for which a single Money Order may be issued is \$100. When a larger sum is to be sent additional Orders must be obtained. Any number of Orders may be drawn on any Money Order office; but, if Orders are drawn in excess of \$200 on any one day upon an office of the 4th class, notice of the fact by letter [or Form 6037] is to be promptly sent the Department by the issuing Postmaster so that provision may be made for payment.

Applications must be preserved at the office of issue for four years from date of issue.



Views in the Cottage Gardens Nurseries, Eureka, Humboldt County, California

California Grown Holland

BULBS



A Basket of Narcissus—SIR WATKIN

COTTAGE GARDENS NURSERIES, Inc.

HUMBOLDT COUNTY

EUREKA, CALIFORNIA