



DUKE
UNIVERSITY



LIBRARY



Digitized by the Internet Archive
in 2015

<https://archive.org/details/coloradospringsm01stiv>

Colorado Springs, Manitou Springs,

AND VICINITY.

ILLUSTRATED AND DESCRIPTIVE.

COPYRIGHTED, 1889, BY JOHN O. STIVERS,
COLORADO SPRINGS.

NEGATIVES BY JOHN O. STIVERS,
COLORADO SPRINGS, COLO.
ILLUSTRATIONS AND LETTER PRESS
FROM
LITHOTYPE PUBLISHING CO.
GARDNER, MASS.

INDEX.

1. PIKE'S PEAK AVENUE, COLORADO SPRINGS.
2. GREEN MOUNTAIN FALLS.
3. THE GATEWAY, GARDEN OF THE GODS.
4. SIGNAL STATION, PIKE'S PEAK.
5. COLORADO COLLEGE, COLORADO SPRINGS.
6. ENTRANCE TO BLACK CANON.
7. "GRANDMA" MONUMENT PARK.
8. J. G. HEISTAND'S JEWELRY AND MINERAL ESTABLISHMENT,
MANITOU SPRINGS.
9. SEVEN FALLS.
10. EL PASO CLUB, COLORADO SPRINGS.
11. RAINBOW FALLS, UTE PASS.
12. CURRECANTI NEEDLE.
13. BEAR AND SEAL ROCKS, GARDEN OF THE GODS.
14. THE "ANTLERS," COLORADO SPRINGS.
15. PRESBYTERIAN CHURCH, COLORADO SPRINGS.
16. D. & R. G. STATION, COLORADO SPRINGS.
17. BLACK CANON.
18. GRAVE OF HELEN HUNT JACKSON ("H. H."), CHEYENNE
MOUNTAIN.
19. WELLES & SHIELDS' CARRIAGE REPOSITORY, COLORADO
SPRINGS.
20. IRON SPRING COMPANIES HOTEL AND PAVILIONS, MANITOU
SPRINGS.
21. RUXTON HOUSE, MANITOU SPRINGS.
22. ACACIA PARK AND NEVADA AVENUE.
23. GARFIELD SCHOOL, COLORADO SPRINGS.
24. UTE PASS.
25. MANITOU STAGE AT OURAY.
26. IN THE BLACK CANON.
27. SOUTH CHEYENNE FALLS.
28. DEAF AND DUMB COLLEGE, COLORADO SPRINGS.
29. THE ROYAL GORGE.
30. D. & R. G. R'Y STATION AT MANITOU SPRINGS.
31. DUTCH WEDDING, MONUMENT PARK.
32. CHIPPEETA FALLS, BLACK CANON.
33. MOUNTAIN TRAIN AT CIMARRON.
34. SODA SPRING PAVILION, MANITOU SPRINGS.
35. CLIFF HOUSE, MANITOU SPRINGS.
36. SODA BATH HOUSE, MANITOU SPRINGS.
37. THE AMPHITHEATRE, WILLIAMS CANON.
38. CHEYENNE MOUNTAINS.
39. BALANCED ROCK, GARDEN OF THE GODS.
40. GUNNISON RIVER, BLACK CANON.
41. GRACE CHURCH (EPISCOPAL), COLORADO SPRINGS.
42. OLD LOG CABIN, NORTH CHEYENNE CANON.
43. HOTEL RAMONA, CASCADE CANON.
44. QUEEN OF THE CANON FALLS, CASCADE CANON.
45. IRON SPRING PAVILION AND LOVER'S WALK, CASCADE CANON.
46. ANVIL ROCK, MONUMENT PARK.
47. ELECTRIC LIGHT STATION, COLORADO SPRINGS.
48. THE "ROOKERY," GARDEN OF THE GODS.
49. EMIGRANT TRAIN FROM OKLAHOMA.
50. "NATIVES."

INTRODUCTION.

THERE is no State in this country that has the scenic attractions and general health-giving qualities of Colorado ; the tourist in search of pleasure and the invalid in quest of health find the location of Colorado Springs and Manitou Springs equalled by no other places in the great west. Colorado Springs enjoys the distinction of being the most beautiful and attractive city in the Rockies, while Manitou Springs, as its name indicates, has numerous mineral springs, with charms and attractions that are not artificial. These places are located within easy access of Pike's Peak, Ute Pass, Cheyenne Mountains, Cascade, Green Mountain Falls, and hundreds of green and picturesque cañons with streams stocked with an abundance of trout, plenty of game for the sportsman, and an endless variety of mineral specimens for the mineralogist. Persons desiring an equalized climate find it here ; the winters being warm, and the summers mild and beautiful. Too much cannot be said of the health-giving qualities of this portion of the State.

The altitude of Colorado Springs is 5,982 feet. On the north and east are the broad prairie lands and on the south and west are the Rockies, presenting views that are variegated, extensive, and beautiful. The population is about 12,000, and every year these places are visited by over ten thousand tourists.

The city is furnished with electric lights, has an abundance of the finest of spring water for drinking, has tramway, and already plans are under way for an electric road to carry tourists to the attractive points in the immediate vicinity.

The public schools are a pride of the city and its aim is to have the best instructors that can be secured. The school buildings are the finest in the State.

The State Deaf and Dumb institution is located here, and has met with such marked success that additional buildings are in course of construction.

Every religious denomination has a fine building to worship in, several of them being of stone and erected at a considerable cost.

The scenic attractions in this immediate vicinity are numerous and include the Garden of the Gods, with wonderful rock formations of different colors, and a gateway springing from the level of the plain 330 feet high, while within the garden the spectator is kept busy looking for resemblances to figures of beasts and birds. Ute Pass, the famous old Indian trail over the Rockies in its winding way through a picturesque cañon, gives one a good idea of mountain scenery, and at Cascade Cañon the scenery is of a varied character. From this place starts the famous wagon road to Pike's Peak, which was completed in the fall of '88 at a cost of over \$30,000. Green Mountain Falls is a quiet, secluded, and charming spot, and just the place for camping out.

The Denver & Rio Grande Railway runs through the State, giving the tourist an opportunity to see the grandest scenery of the world. The scenes in the Royal Gorge, Black Cañon, Marshall Pass, and Veta Pass, are almost beyond description and the tourists who come to this wonderland should avail themselves of the advantages offered by the "Scenic Line of the World" in their trip "around the circle."



PIKES PEAK AVENUE—COLORADO SPRINGS.

GREEN MOUNTAIN FALLS.

THIS famous Summer and Winter Resort is situated in the midst of the "Rockies" in the historic Ute Pass. It is fifteen miles from Colorado Springs, and having ample railroad facilities, is of easy access.

The climate is salubrious, the scenery is gorgeous, and the fine Boating and Drives make the place very attractive. The Foliage is abundant, there are Mammoth Rocks and Shady Rills and an abundance of pure water.

The company furnishes Cottages and tents, nicely carpeted and furnished and they have recently completed a new hotel that is one of the finest in the West.

The Invalid and the Tourist will find this a beautiful place.

F. E. DOW, President.

Dr. M. H. SMITH, Vice President.

I. J. WOODWORTH, Secretary.

CHARLES SPRAGUE, General Manager.

Colorado Springs Office, 112 Pike's Peak Avenue.



GREEN MOUNTAIN FALLS.

GARDEN OF THE GODS.

THERE is certainly very little within the garden to justify its name, for it is anything but garden-like; but by a stretch of imagination one can conceive that some of these curious rock formations may be petrified Gods of the Norse Mythology. At the eastern entrance these monoliths reach the height of over three hundred feet. These monumental pyramids are composed of terra-cotta-colored sandstone, with an occasional one of gypsum. The visitor to this place is both charmed and astonished as he views the odd and grotesque formations, and curious freaks of nature. Within the gates stands the remarkable Balanced Rock resting its three hundred tons upon a scanty base of a few feet. Fitzhugh Ludlow in describing this place says, "one of the red rocks resembles the Statue of Liberty standing by her escutcheon with the usual Phrygian Cap in her hand."



SCENE ON D. & R. G. R. R.

THE GATEWAY—GARDEN OF THE GODS.



SIGNAL STATION, PIKE'S PEAK.



COLORADO COLLEGE—COLORADO SPRINGS.

BLACK CAÑON.

THE Denver & Rio Grande Railroad takes the tourist through some wonderful country, but there is no spot in the Rockies more beautiful and sublime than the ever-changing scenery of the Black Cañon, the Grand Gorge of the Gunnison. For miles the train glides along, following the beautiful waters of the Gunnison River, past walls of solid rock that look toward the heavens thousands of feet, and so close together that sometimes it seems as though the daylight would be shut out. At one place in the cañon a spacious amphitheatre is passed, in the centre of which stands, solitary and alone, a towering monument of solid stone, at an estimated height of over two thousand feet. The tourist who views these scenes from the observation car, can never forget the wonders of nature's works.



SCENE ON D. & R. G. R. R.

ENTRANCE—BLACK CANON

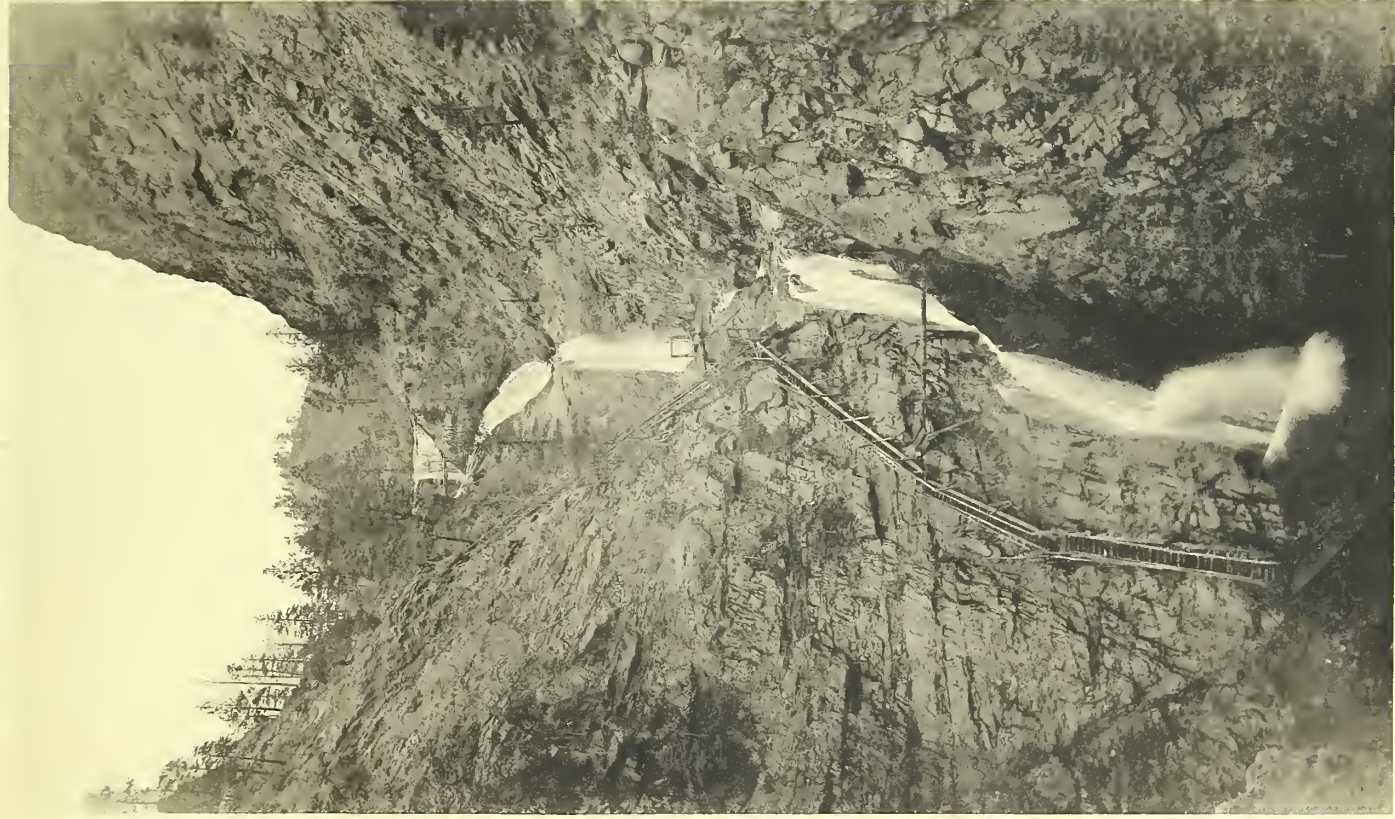


"GRANDMA"—MONUMENT PARK.



J. G. HEISTAND'S JEWELRY AND MINERAL ESTABLISHMENT—MANITOU SPRINGS.





SEVEN FALLS.



EL PASO CLUB—COLORADO SPRINGS.



RAINBOW FALLS—UTE PASS.

CURRECANTI NEEDLE.

(BLACK CAÑON.)

IN the middle of the cañon, high above the rocks, stands the wonderful formation that is known as Currecanti Needle; towering toward the clouds upwards of two thousand feet, with the crystal waters of the Gunnison rushing, thrashing, bubbling past its base, and presenting a grand and beautiful picture. On either side of the Needle are gulches that none but well-armed men ever enter, as this is the home of the Mountain Lion, Black Bear and other wild beasts; and this spot is well named the sportsman's paradise. On July 4th, 1888, one of the employees of the Denver & Rio Grande Railroad scaled the rocky sides of the Needle and planted the American flag on its peak, a feat that few men would dare try to accomplish.



SCENE ON D. & R. G. R. R.

CURICANTI NEEDLE



BEAR AND SEAL ROCKS—GARDEN OF THE GODS.



THE "ANTLERS"—COLORADO SPRINGS.





PRESBYTERIAN CHURCH—COLORADO SPRINGS.



D. & R. G. STATION—COLORADO SPRINGS.



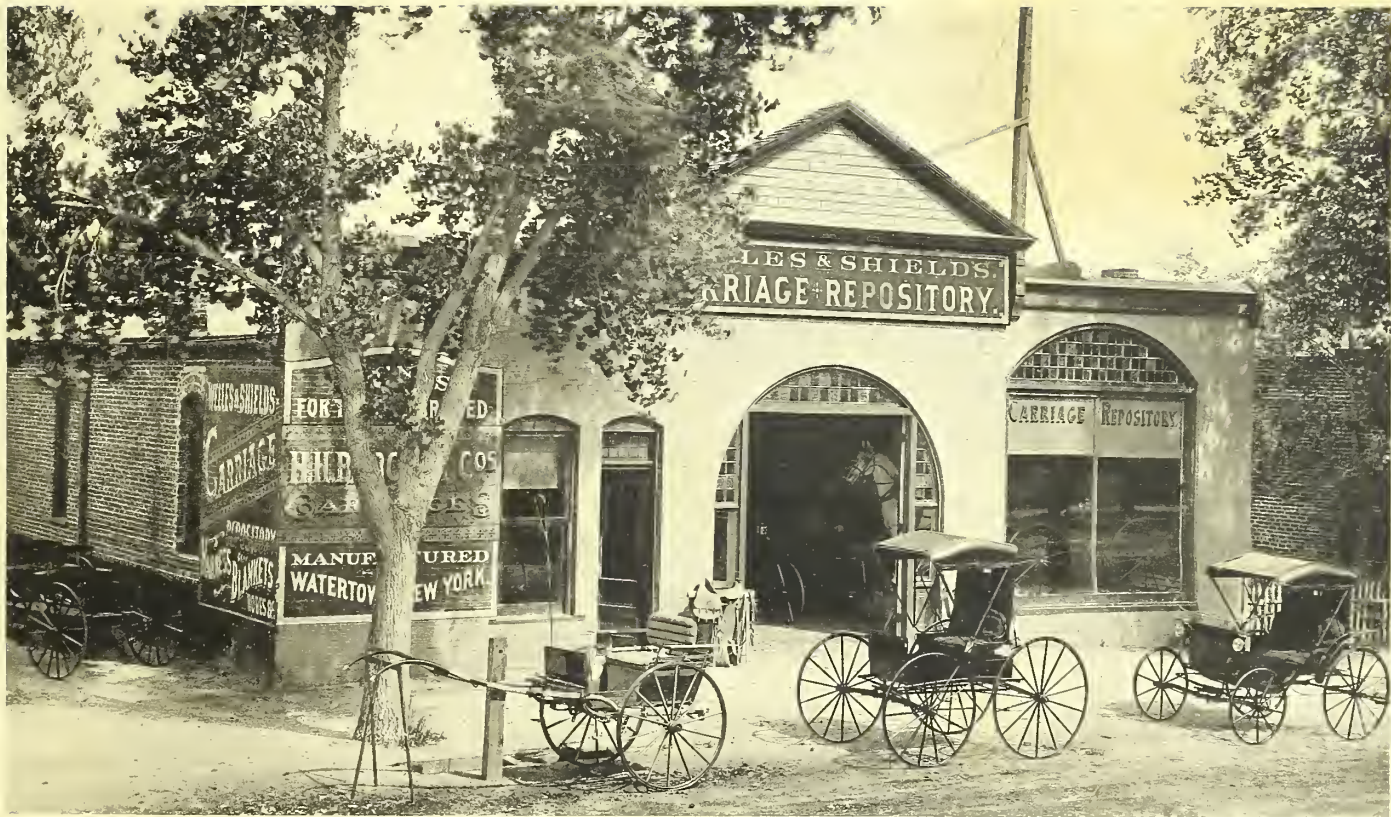
SCENE ON D. & R. G. R. R

BLACK CANON



GRAVE OF HELEN HUNT JACKSON ("H H")—CHEYENNE MOUNTAIN.





WELLES & SHIELDS' CARRIAGE REPOSITORY—COLORADO SPRINGS.



IRON SPRING COMPANY'S HOTEL AND PAVILIONS—MANITOU SPRINGS.



RUXTON HOUSE—MANITOU SPRINGS.



ACACIA PARK.



NEVADA AVENUE.





GARFIELD SCHOOL—COLORADO SPRINGS.



UTE PASS.





CONNECTING WITH THE D. & R. G. R. R.

MOUNTAIN STAGE AT OURAY



SCENE ON D. & R. G. R. R.

IN THE BLACK CANON



SOUTH CHEYENNE FALLS.





DEAF AND DUMB COLLEGE—COLORADO SPRINGS.



SCENE ON D. & R. G. R. R. R.

THE ROYAL GORGE.





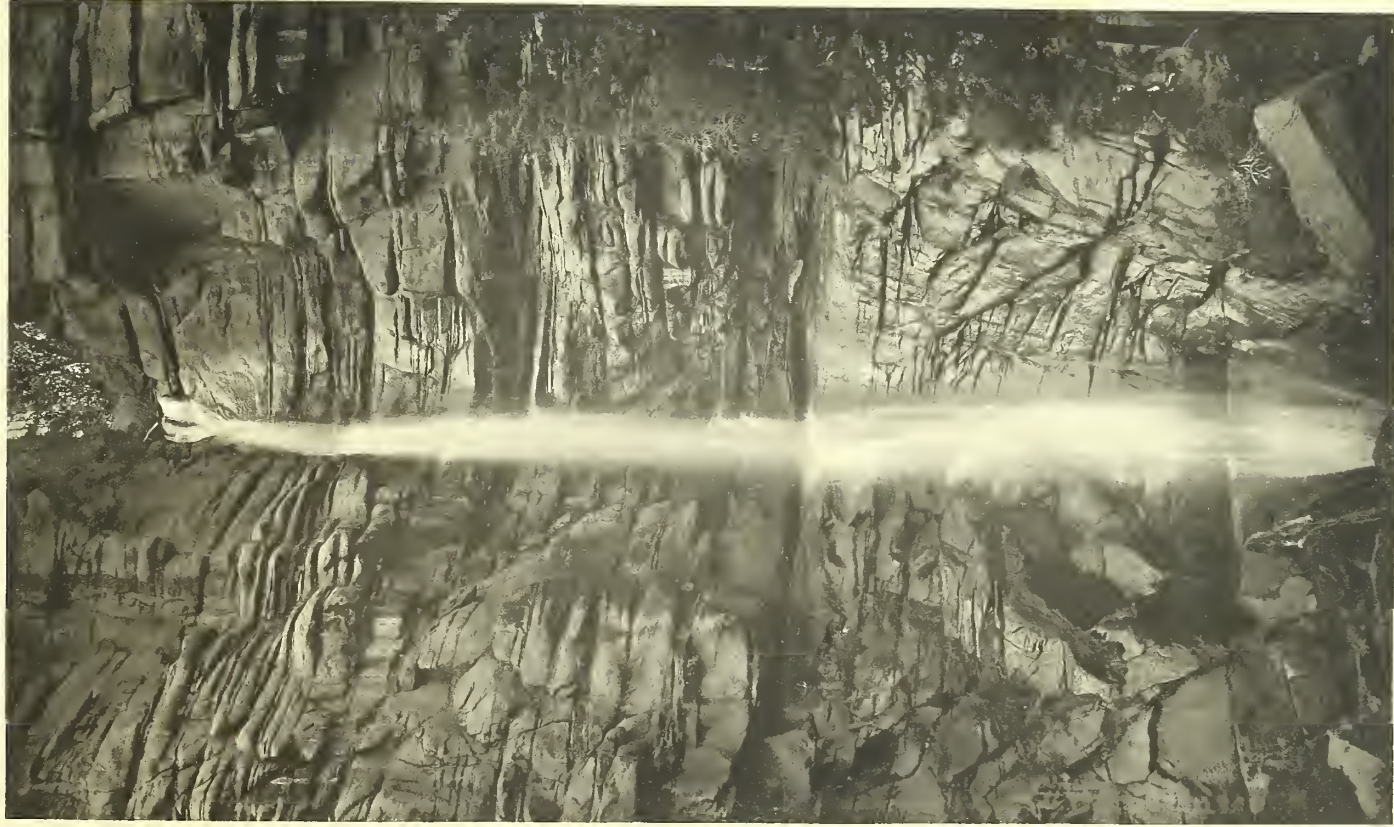
D. & R. G. RAILWAY STATION—AT MANITOU SPRINGS.



DUTCH WEDDING—MONUMENT PARK.

CHIPPETA FALLS.

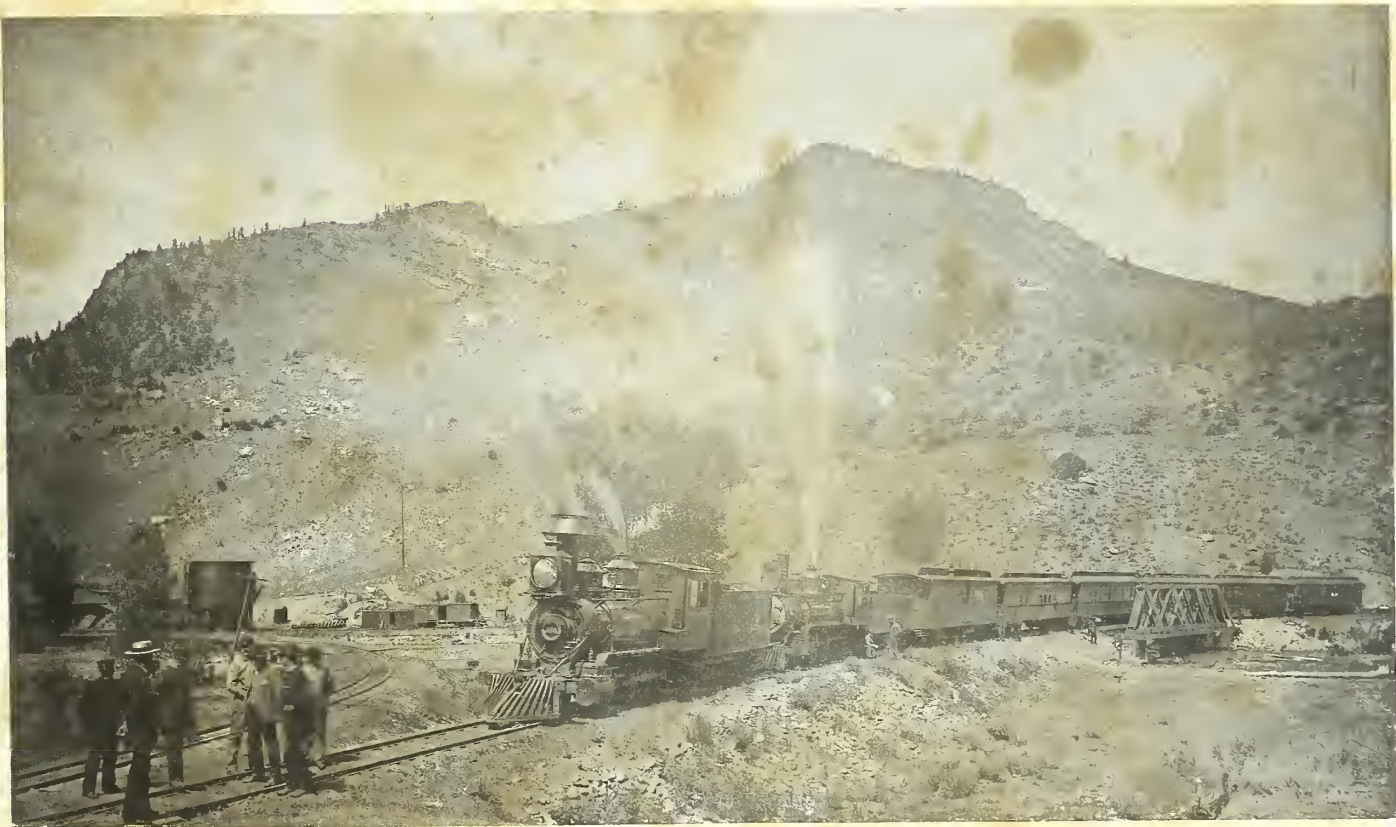
IN the centre of the Black Cañon, where the rocks are the highest, and the railroad winds around the river bed like a serpent hunting for prey, above the river, at a point where it seems to be resting from its labors, can be seen the beautiful and picturesque Chippeta Falls, tumbling over the top of mountain of rocks, and falling in gentle spray a distance of two hundred feet into the bosom of the Gunnison, as it glides silently past, at the base of the great pyramid of rocks. The falls were discovered by the Uncompahgre Ute Indians, who pitched their tepees at its head waters. The Indians were so charmed with this silver stream that they gave it the name of the wife of their great chief. It is said that while other streams and falls have been known to run dry, this one has never yet failed.



SCENE ON D. & R. G. R. R.

CHIPPETA FALLS—BLACK CANON.





SCENE ON D. & R. G. R. R.

MOUNTAIN TRAIN AT CIMARON.



SODA SPRING PAVILION—MANITOU SPRINGS.



CLIFF HOUSE—MANITOU SPRINGS.





SODA BATH HOUSE—MANITOU SPRINGS.





AMPHITHEATRE—WILLIAM CANON.



CHEYENNE MOUNTAINS.

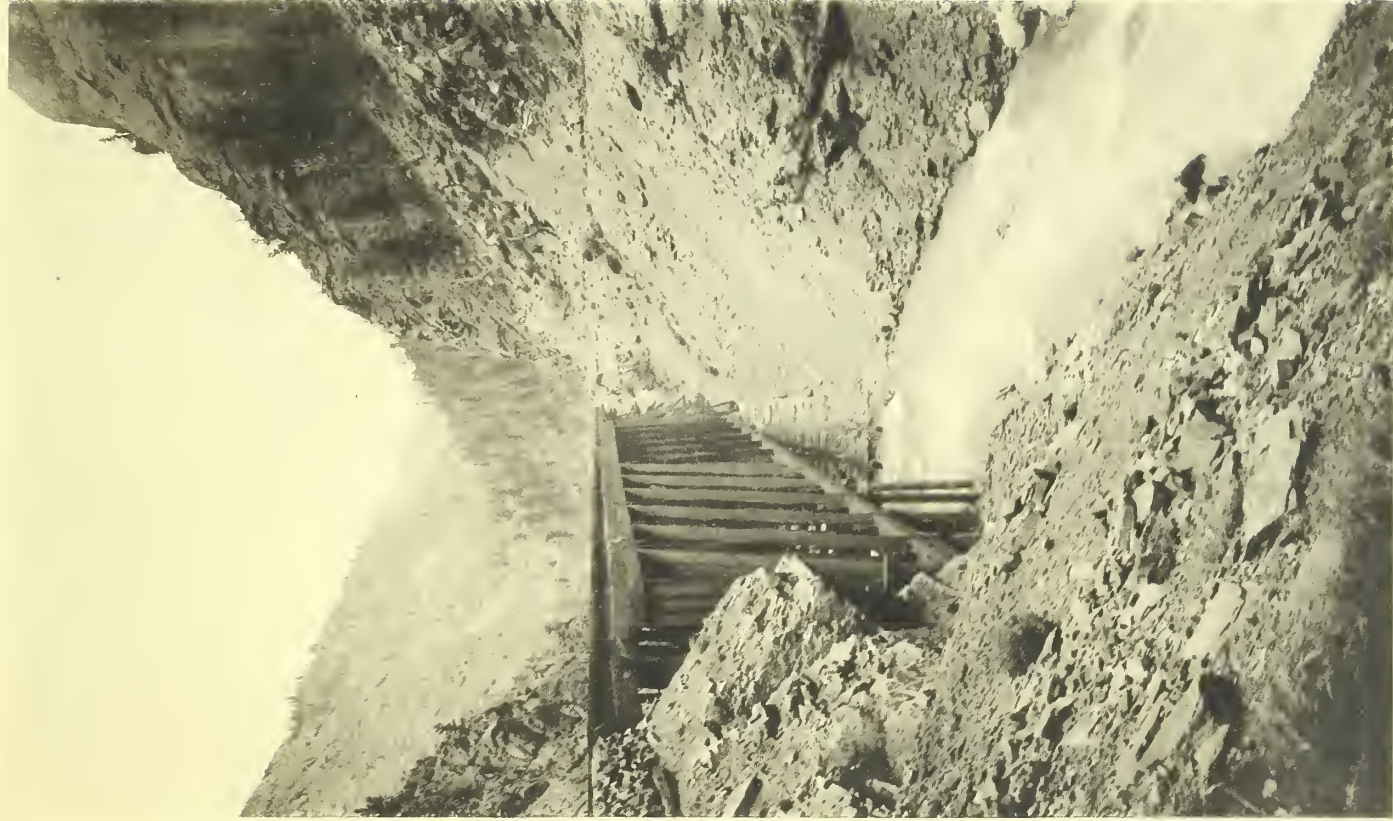


BALANCED ROCK—GARDEN OF THE GODS.

GUNNISON RIVER.

(BLACK CAÑON.)

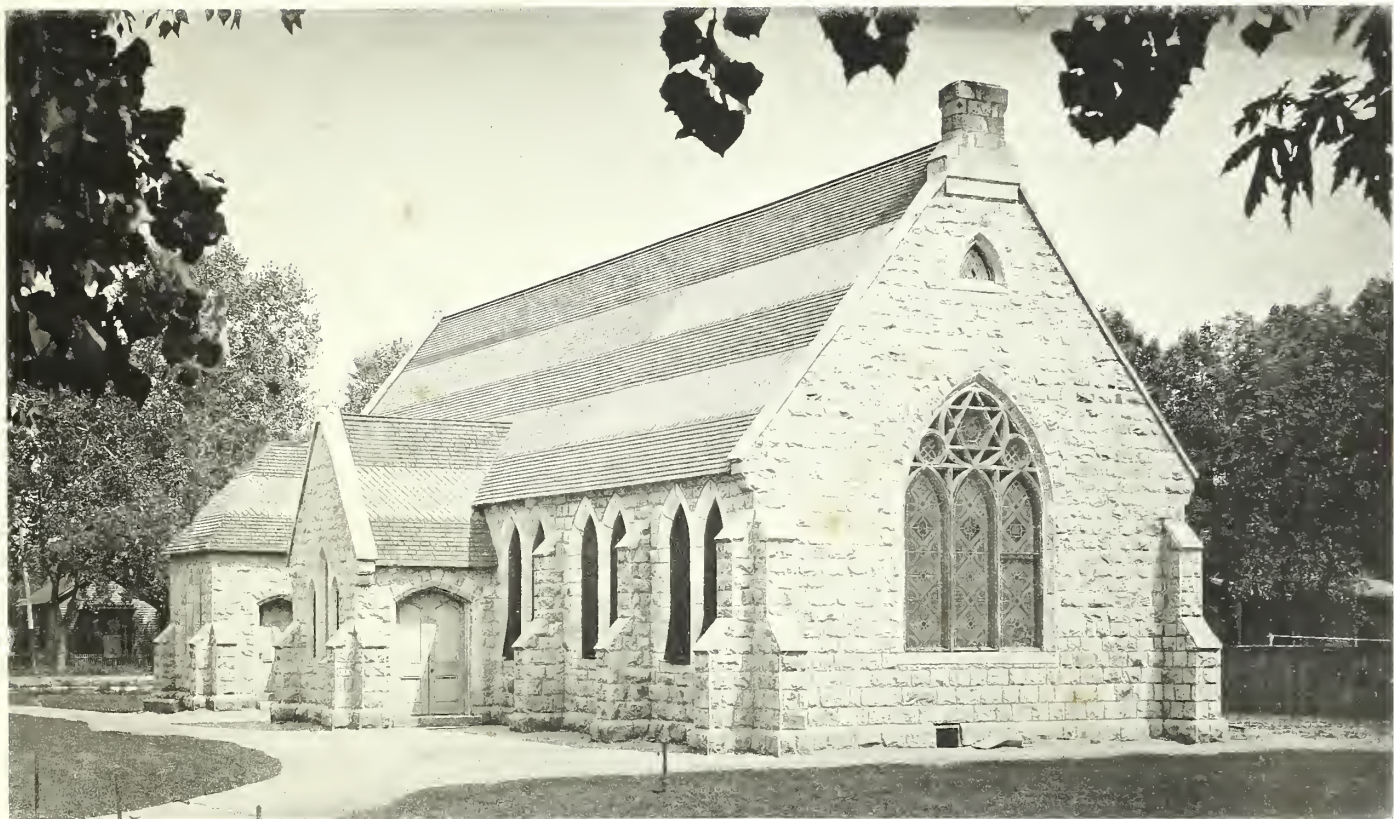
THERE is no river in Colorado that presents more changes in its course than the Gunnison. To those who have been to its head waters, on the divide, a small crystal stream, no thought is given as to what a wonderful river it forms as it rushes madly and furiously through the cañons, over rocks, and again gliding along as noiselessly as when in its infancy. In portions of the river its force is so terrific as it dashes through the narrow passes and over great rocks, that it lashes itself into perfect foam that is as white as snow. The river abounds in trout and the sportsman finds an abundance of game in this vicinity.



SCENE ON D. & N. G. R. R.

GUNNISON RIVER—BLACK CANON





GRACE CHURCH (EPISCOPAL)—COLORADO SPRINGS.



OLD LOG CABIN—NORTH CHEYENNE CANON.

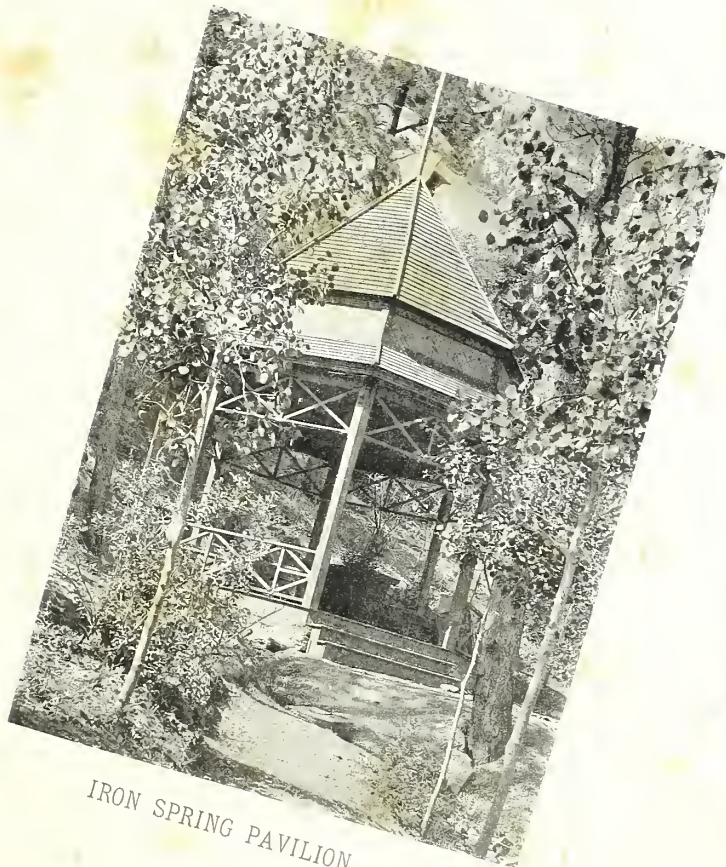




HOTEL ROMONA—CASCADE CANON.



QUEEN OF THE CANYON FALLS—CASCADE CANYON.



IRON SPRING PAVILION.

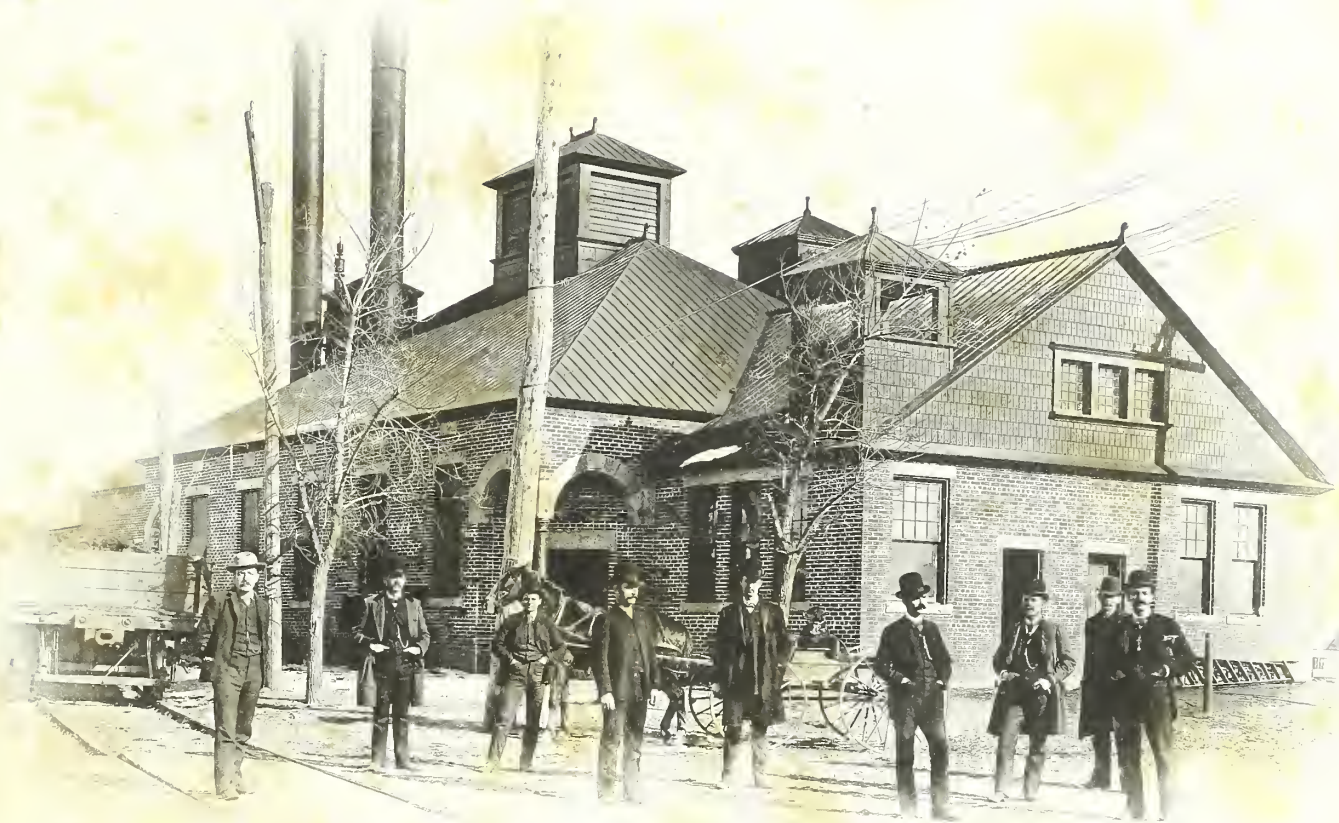


LOVERS' WALK.

CASCADE CANON.



ANVIL ROCK—MONUMENT PARK.



ELECTRIC LIGHT STATION—COLORADO SPRINGS.



THE "ROOKERY"—GARDEN OF THE GODS.



EMIGRANT TRAIN FROM OKLOHOMA.





"NATIVES"

Duke University Libraries



D00390529S

