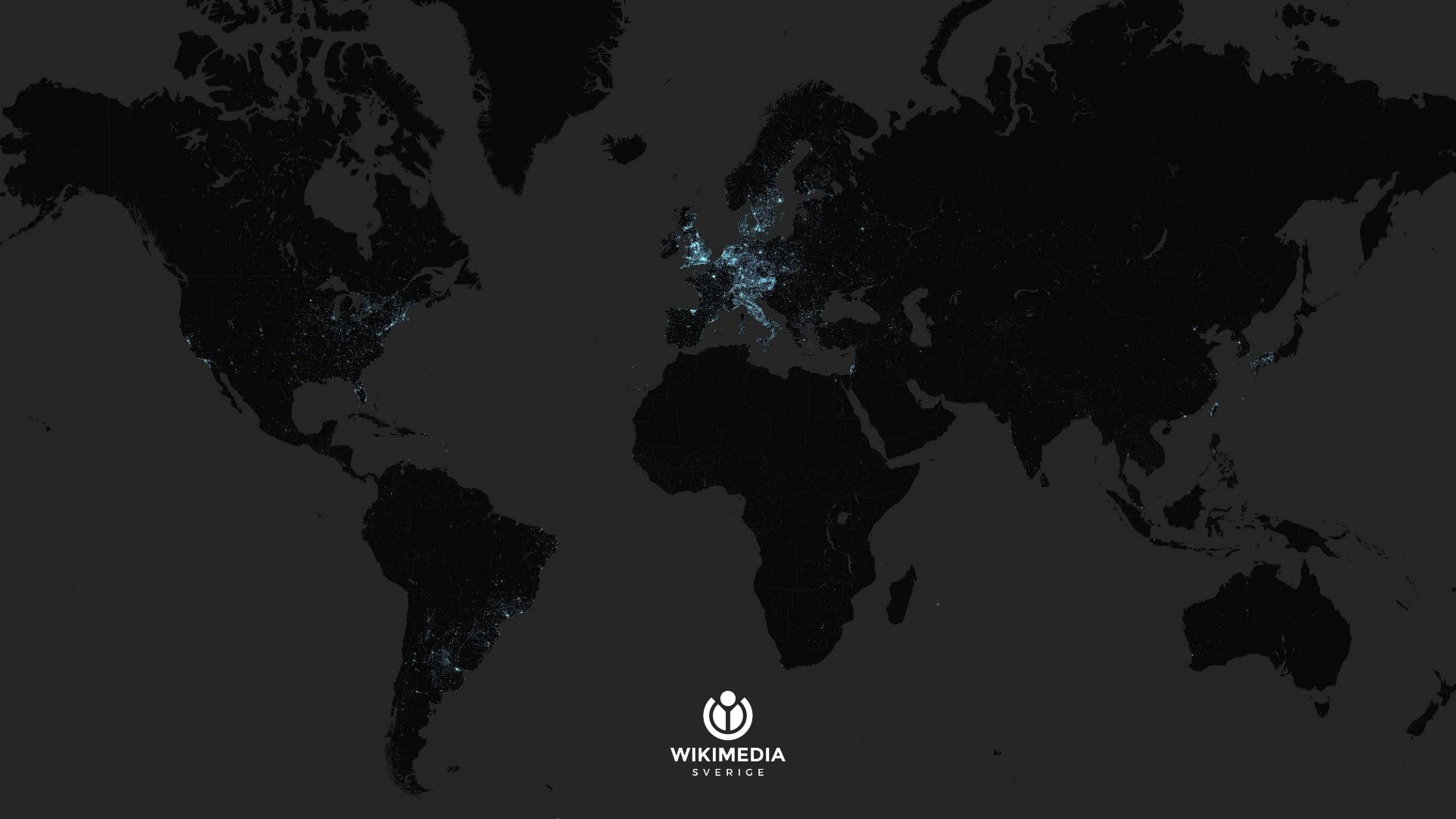


Ensuring visibility for your country's GLAM institutions on the Wikimedia projects

Alicia Fagervig
alicia.fagervig@wikimedia.se



Wikimania 2019
2019-08-16
Stockholm, Sweden



**Imagine a world, in
which every GLAM
has a Wikidata item**



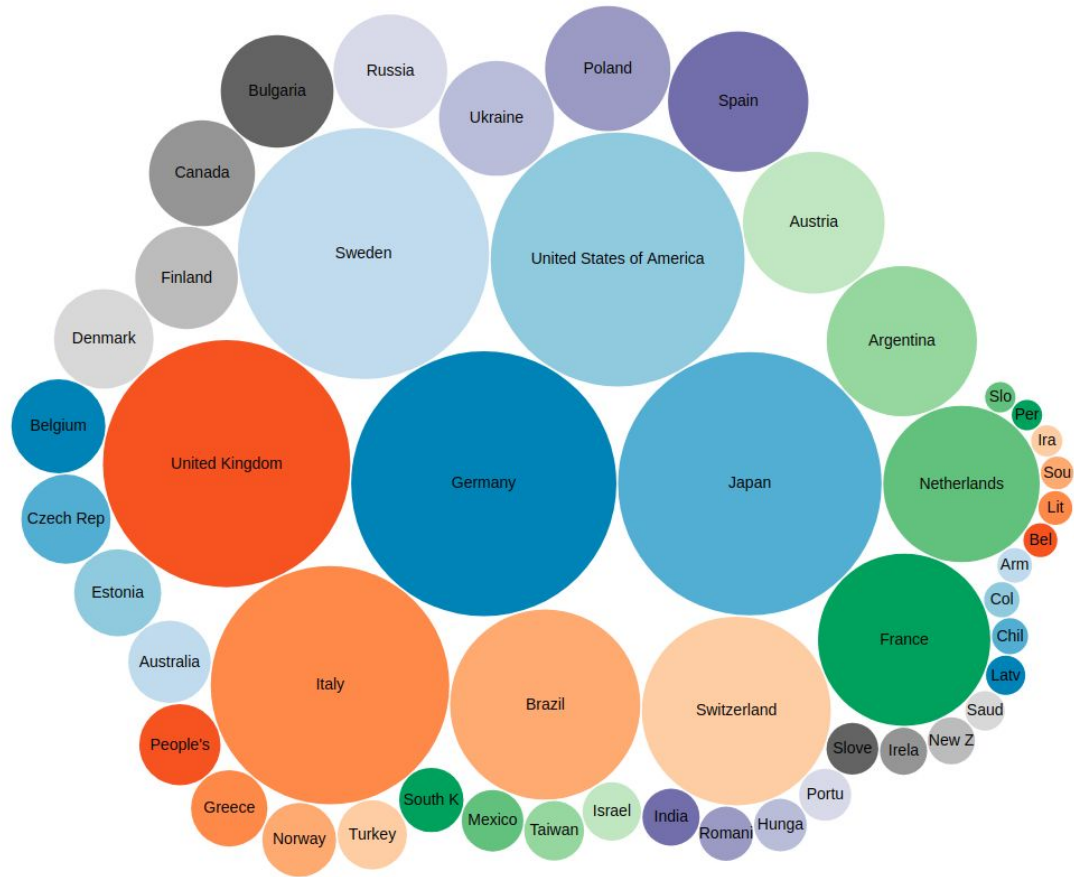
FindingGLAMs

Collecting information about the world's GLAMs and their collections on the Wikimedia projects – available for free, for everyone, to use and improve

<https://meta.wikimedia.org/wiki/FindingGLAMs>

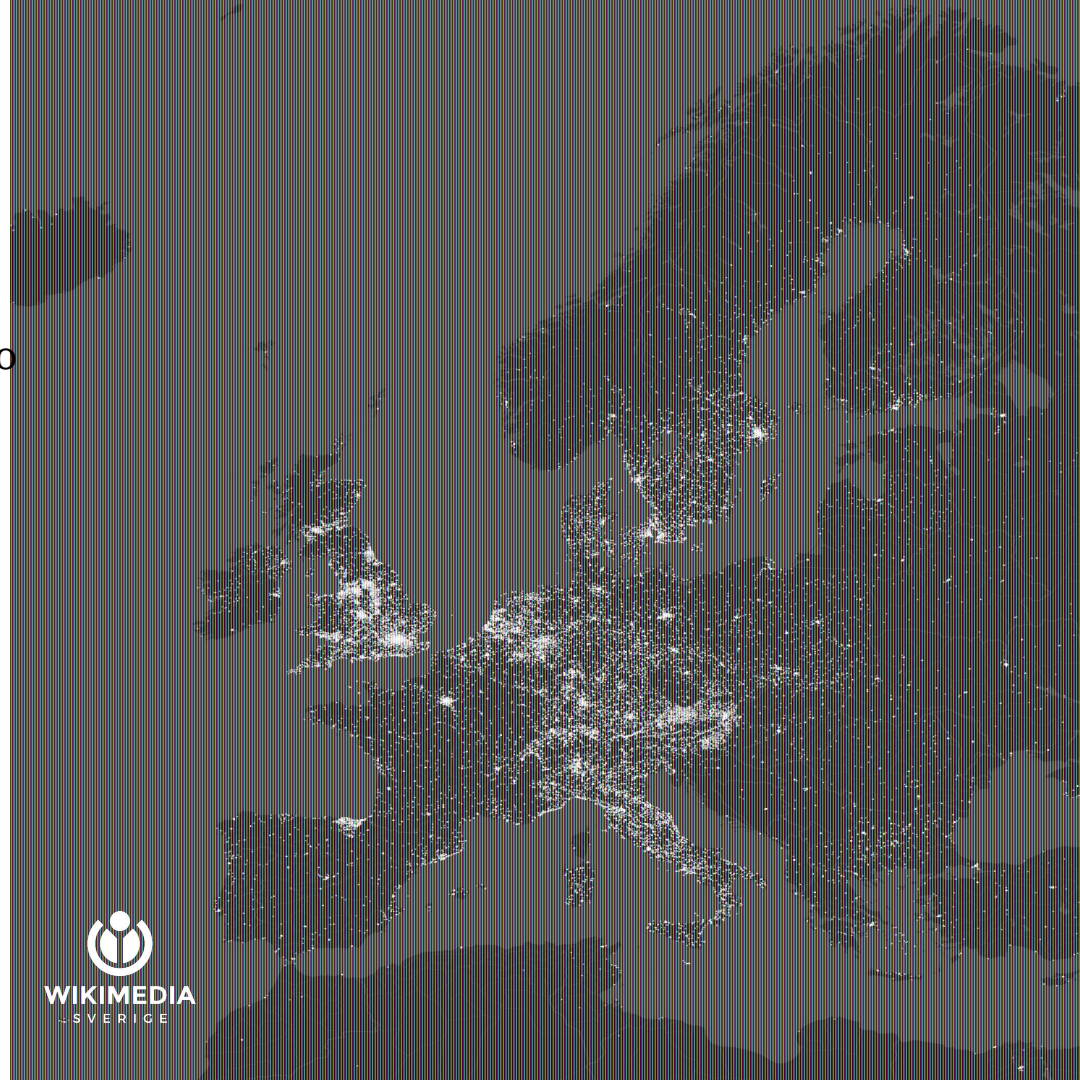
GLAMs in numbers

- 88,000 museums, libraries and archives on [Wikidata](#)
- Does not represent the world accurately
- IFLA estimates 2,5 million [libraries](#) in the world – 31,000 on [Wikidata](#)
- [Museum Data Files](#) has 30,000 museums in the USA – 3,700 on [Wikidata](#)



Why?

- Get a clearer picture of what needs to be done
- Engage new contributors in your local community
- Widen and strengthen your contact network with GLAMs
- Contribute to developing tools and methods to work with GLAMs and the general public



Contribute to the list of datasets

- https://meta.wikimedia.org/wiki/FindingGLAMs/GLAM_datasets
- Helps everyone get an overview of existing information
- Knowing what doesn't exist is equally important
- A starting point to make contacts and discuss data licensing



| | | | | |
|---------|--|----------------------|---|--|
| Belgium | ISIL list of Belgium | here | | International Standard Identifier for Libraries (P791) |
| Czechia | Evidence knihoven | here | | |
| Czechia | ADR – Centrální adresář knihoven a informačních institucí v ČR | here | Database of Libraries & Information Centers in the Czech Republic (Q20427786) | Libraries & Information Centers in the Czech Republic ID (P6574) |
| Czechia | Adresář muzeí a galerií ČR | here | | |
| Denmark | ISIL list of Denmark | here | | International Standard Identifier for Libraries (P791) |
| Germany | ISIL list of Germany | here | | International Standard Identifier for Libraries (P791) |

What sort of data are we looking for

- Lists, databases etc. of cultural heritage institutions (e.g. database of all libraries in a country)
- Machine-readable, downloadable format (csv, json...) better than a website or search form
- Published by an identifiable source – so that we can include them in our contact network

FindingGLAMs Campaign portal

https://meta.wikimedia.org/wiki/FindingGLAMs_Campaign

Translate this page

Other languages: [English](#) • [norsk bokmål](#) • [svenska](#)



FindingGLAMs

Crowdsource cultural heritage data around the world

Welcome!

About the project

Participate

Resources

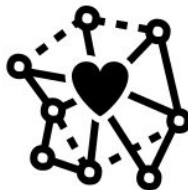
Progress

Connect with us

Help us put cultural heritage institutions on the map!



Contribute to a collaborative database of cultural heritage institutions around



Make knowledge accessible to millions of users on the Wikimedia projects –



Make your first contribution today – it only takes a



What have we achieved

Translate into
your language

FindingGLAMs Campaign portal

https://meta.wikimedia.org/wiki/FindingGLAMs_Campaign

Translate this page

Other languages: English  • norsk bokmål  • svenska 



FindingGLAMs

Crowdsource cultural heritage data around the world

Welcome!

About the project

Participate

Resources

Progress

Connect with us

Your favorite
resources about
Wikidata for
beginners?

Help us put cultural heritage institutions on the map!

Improve
instructions for
participants



Contribute to a collaborative database
of cultural heritage institutions around

Make knowledge accessible to millions
of users on the Wikimedia projects –

Make your first contribution
today – it only takes a

What have we achieved

Encouraging GLAM staff to contribute

- They have the most up-to-date knowledge
- They have an interest in spreading information about their institution
- They know about Wikipedia and understand why being there is beneficial



Encouraging GLAM staff to contribute

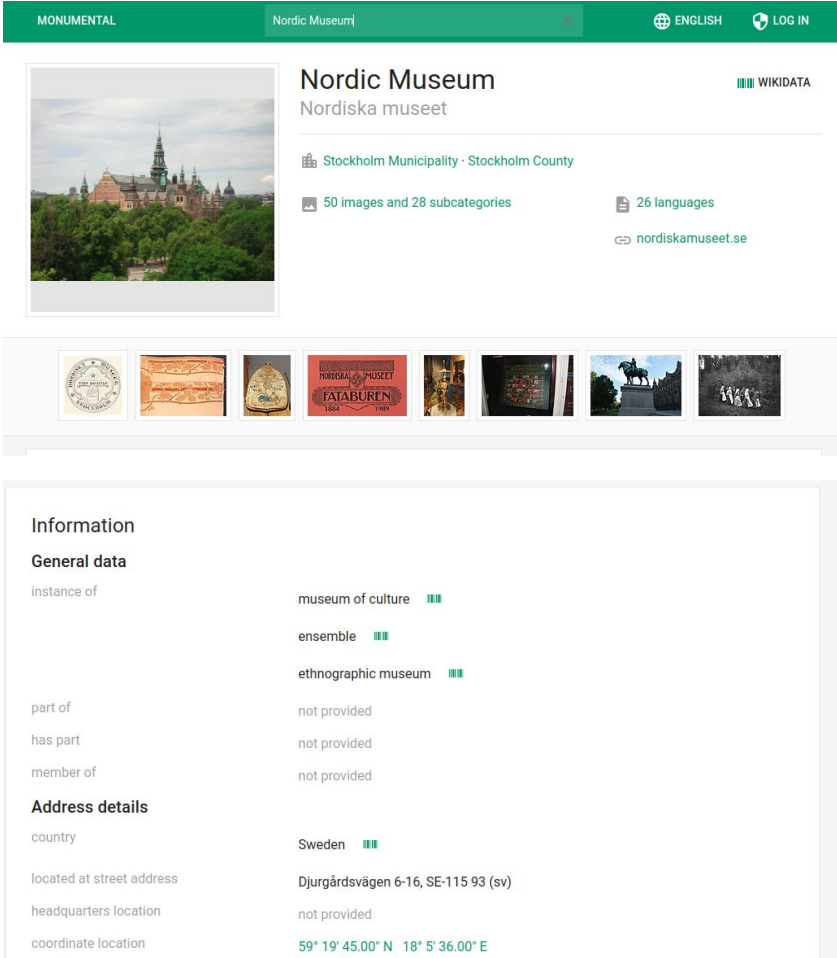
- Wikidata is not as well-known as Wikipedia
- Yet the concept of a database is understandable
- Wikidata is harder for new editors – training needed before constructive editing can start
- Special tools are an alternative



Monumental – a tool to edit GLAM data on Wikidata

- <https://tools.wmflabs.org/monumental-glam/>
- Based on Wiki Loves Monuments tool
- Find institutions around you
- User does not have to guess properties
- Display resources from Wikidata, Wikipedia, Wikimedia Commons

MONUMENTAL Nordic Museum ENGLISH LOG IN



Nordic Museum WIKIDATA
Nordiska museet

Stockholm Municipality · Stockholm County

50 images and 28 subcategories 26 languages
nordiskamuseet.se

Information

General data

| | |
|-------------|---|
| instance of | museum of culture ensemble ethnographic museum |
| part of | not provided |
| has part | not provided |
| member of | not provided |

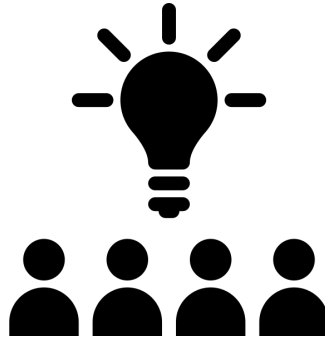
Address details

| | |
|---------------------------|---|
| country | Sweden |
| located at street address | Djurgårdsvägen 6-16, SE-115 93 (sv) |
| headquarters location | not provided |
| coordinate location | 59° 19′ 45.00″ N 18° 5′ 36.00″ E |

Crowdsourcing GLAM data



Spread the message via
social media



People add information
about the GLAMs they
know



Wikidata gets new
contributors – and new
content

How you too can participate

- Translate FindingGLAMs Campaign portal into your language:
meta.wikimedia.org/wiki/FindingGLAMs_Campaign
- Add datasets from your country:
https://meta.wikimedia.org/wiki/FindingGLAMs/GLAM_datasets
- Give feedback or report bugs in Monumental
- Organize an event in your community
- Crowdsourcing data

FindingGLAMs crowdsourcing campaign

- https://meta.wikimedia.org/wiki/FindingGLAMs_Campaign
- October 8–29, 2019
- Reach out to GLAM staff via social media etc.
- Do you want to be be part of it?
- alicia.fagerving@wikimedia.se

Let's talk!

- Challenges in your country?
- Have you worked on importing any databases of GLAMs?
- Have you convinced data providers to release their data as CC0?
- How to encourage GLAM people to contribute to Wikidata? What's your experience?
- Are tools like Monumental the right way to go? What other tools would be useful?