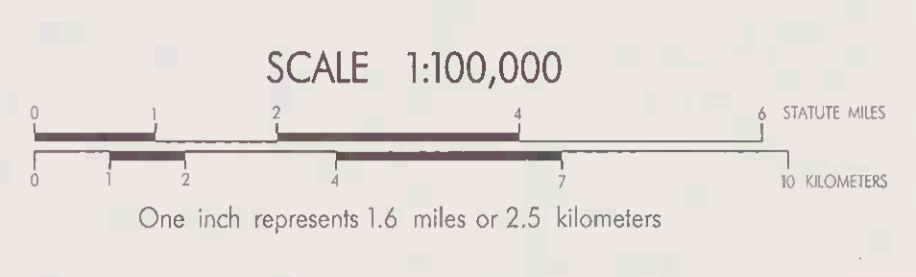


Historic, archived document

Do not assume content reflects current scientific knowledge, policies, or practices.

US FOREST SERVICE
ALASKA REGION
CENTRAL PRINCE OF WALES

ALTERNATIVE 5 Map to Draft Environmental Impact Statement
October, 1992

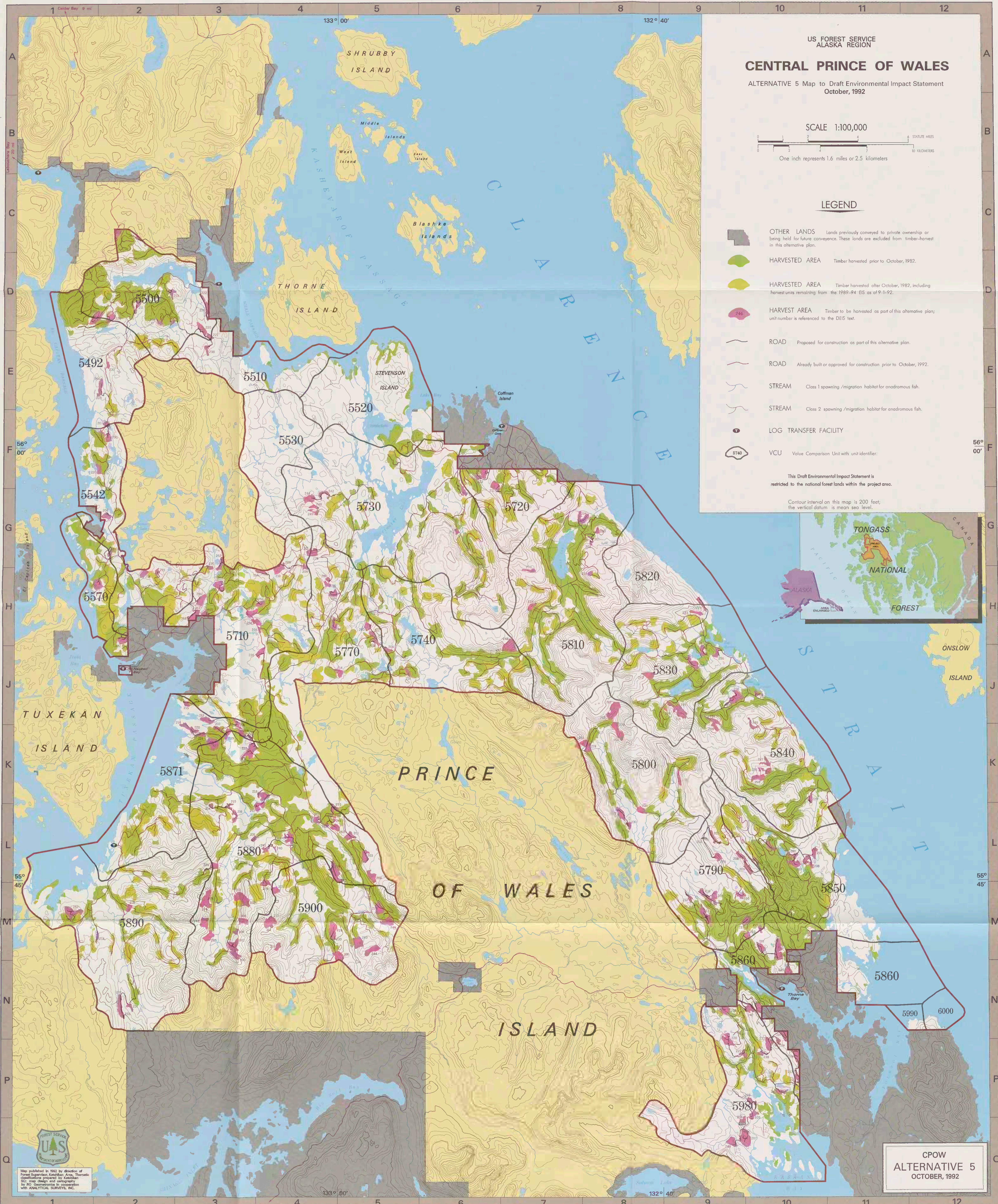
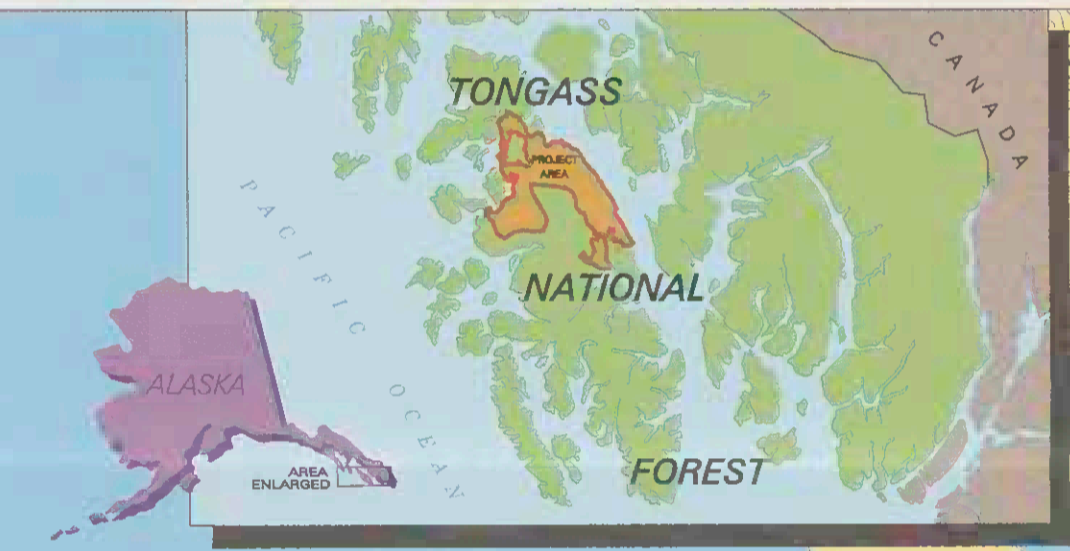


LEGEND

- OTHER LANDS Lands previously conveyed to private ownership or being held for future conveyance. These lands are excluded from timber-harvest in this alternative plan.
- HARVESTED AREA Timber harvested prior to October, 1992.
- HARVESTED AREA Timber harvested after October, 1992, including harvest units remaining from the 1989-94 EIS as of 9-1-92.
- HARVEST AREA Timber to be harvested as part of this alternative plan; unit number is referenced to the DEIS text.
- ROAD Proposed for construction as part of this alternative plan.
- ROAD Already built or approved for construction prior to October, 1992.
- STREAM Class 1 spawning/migration habitat for anadromous fish.
- STREAM Class 2 spawning/migration habitat for anadromous fish.
- LOG TRANSFER FACILITY
- VCU Value Comparison Unit with unit identifier.

This Draft Environmental Impact Statement is restricted to the national forest lands within the project area.

Contour interval on this map is 200 feet; the vertical datum is mean sea level.



Map published in 1992 by direction of Forest Supervisor, Ketchikan Area, Thermal, Mechanical, and Milling Division, U.S. Forest Service, U.S. Department of Agriculture. SOI map design and cartography by R.D. Gougeon and Associates in cooperation with ANALYTICAL SURVEYS, INC.

CPOW
ALTERNATIVE 5
OCTOBER, 1992