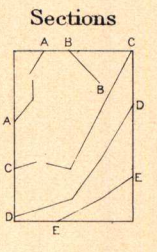


LEGEND
(continued)

IGNEOUS ROCKS
(Areas of igneous rocks are shown by patterns of triangles and rhombs.)

- b** Basalt
- rh** Rhyolite
- pt** Porphyrite
- dp** Diorite-porphyrity
- di** Diorite
- an** Andesite
- bbr** Basic andesitic breccia and flows
- gr** Granite
- Dikes of augite-porphyrity, syenite, etc.
- Dikes of diabase and peridotite

Faults

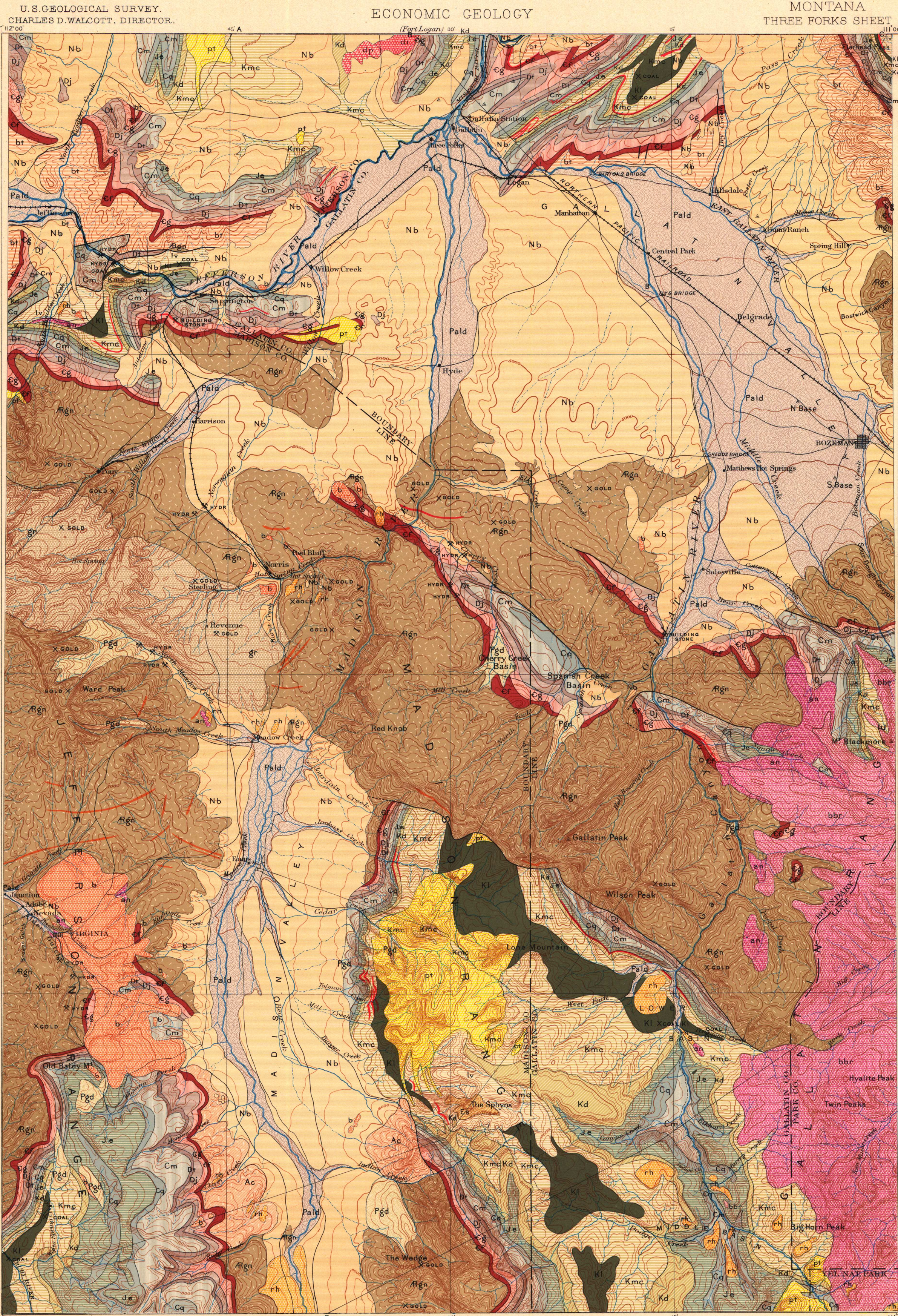


Known productive formations

- Coal**
- Quartzite** (building stone)

SPECIAL SYMBOLS

- Mines and quarries**
- Prospects**
- HYDR Hydraulic gold mines**



LEGEND

SURFICIAL ROCKS
(Areas of Surficial rocks are shown by patterns of dots and circles.)

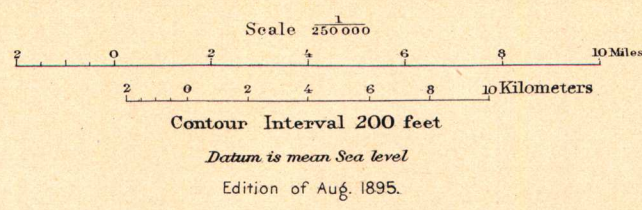
- Pald** Alluvium and drift
- Pgd** Glacial drift and moraines

SEDIMENTARY ROCKS
(Areas of Sedimentary rocks are shown by patterns of parallel lines. Metamorphism is indicated by short dashes combined with the parallel lines.)

- Nb** Bozeman lake beds (sand, conglomerate, limestone clay, and volcanic clay)
- Es** Sphynx conglomerate
- lv** Livingston formation (conglomerate, sandstone, and andesitic tuff)
- Kl** Laramie formation (sandstone and clay with areas of coal)
- Kmc** Montana and Colorado formations (sandstone, limestone, and shale)
- Kd** Dakota formation (conglomerate, quartzite, sandstone, and shale)
- Je** Ellis formation (sand and clay, limestone, and quartzite)
- Cq** Quadrant formation (shale and magnesian limestone)
- Cm** Madison limestone
- Dt** Three Forks formation (shale and magnesian limestone)
- Dj** Jefferson limestone (possibly including Starbuck at base)
- Cg** Gallatin formation (limestone and shale)
- Cf** Flathead formation (limestone, shale, and quartzite)
- bt** Belt formation (conglomerate, sandstone, and magnesian limestone)
- Ac** Cherry Creek formation (marble, mica-schist, and gneiss)
- Rgn** Gneiss and schist

Henry Gannett, Chief Geographer.
A.H. Thompson, Geographer in charge.
Triangulation by J.H. Renshawe and E.M. Douglas.
Topography by the Northern Transcontinental Survey and Frank Tweedy.
Surveyed in 1886.

N.T. Survey
F. Tweedy



Geology by A.C. Peale.
Surveyed in 1883-89.