

#33878356

ID 88066626

HD  
243  
.07  
L354  
1992  
c. 2

BLM LIBRARY  
  
 88066626

U.S. Department of the Interior  
Bureau of Land Management



Lakeview District Office  
1000 Ninth Street South  
Lakeview, Oregon 97630-0055

March 1992



# Lakeview District Planning Update



HD  
243  
.07  
L354  
1992  
c. 2



As the Nation's principal conservation agency, the Department of the Interior has responsibility for most of our nationally owned public lands and natural resources. This includes fostering the wisest use of our land and water resources, protecting our fish and wildlife, preserving the environmental and cultural values of our national parks and historical places, and providing for the enjoyment of life through outdoor recreation. The Department assesses our energy and mineral resources and works to assure that their development is in the best interest of all our people. The Department also has a major responsibility for American Indian reservation communities and for people who live in Island Territories under U.S. administration.

BLM Library  
Denver Federal Center  
Bldg. 50, OC-521  
P.O. Box 25047  
Denver, CO 80225

**BLM-OR-EA-92-09-1792**





March 1992



# Planning Update

## *Introduction -*

This is the second annual Lakeview Resource Area Planning Update. We initiated this effort last year as part of the BLM's continued commitment to keep you, the public informed and involved in the day to day management of the public lands. We are also hoping it will help you to understand land management decisions and proposals involving the BLM.

This report summarizes the accomplishments made by the Lakeview Resource Area in Fiscal Year 1991 (October 1, 1990-September 31, 1991) and outlines what we hope to accomplish this year. It will also highlight some of the more interesting projects and initiatives in which the Resource Area is involved.

This report is not intended to be a comprehensive statement of all of the activities which were completed, but rather a summary report.

## ■ What You Can Find In This Document

*Mailers like this one will be developed annually. While a flexible format will be maintained for the mailer, major sections similar to those described below will be included in each edition.*

**Feature Report:** Reports in this section highlight topics of concern or interest in the Lakeview Resource Area. This might include major projects completed the previous year or upcoming events.

**Summary of Work:** This section identifies the work accomplished in each program by the resource area last year and highlights areas which will be emphasized in the coming year.

**Environmental Assessment Register:** Listed in this section are those environmental assess-

ments (EA's) which may be started and in some cases completed in fiscal year 1992. This section is included to improve public participation in the process used to analyze potential impacts of actions on the ground.

---

*This mailer should bring you up-to-date with activities completed and planned by the Lakeview Resource Area. Any comments regarding the format or content of the mailer should be sent to The Bureau of Land Management, Lakeview District, P.O. Box 151, Lakeview, OR 97630.*

---



Prineville District

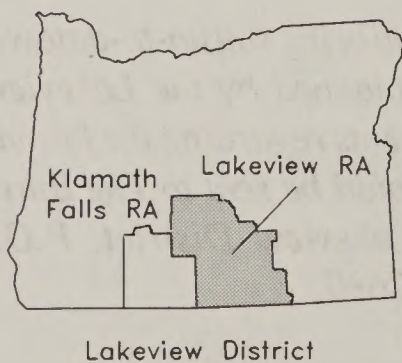
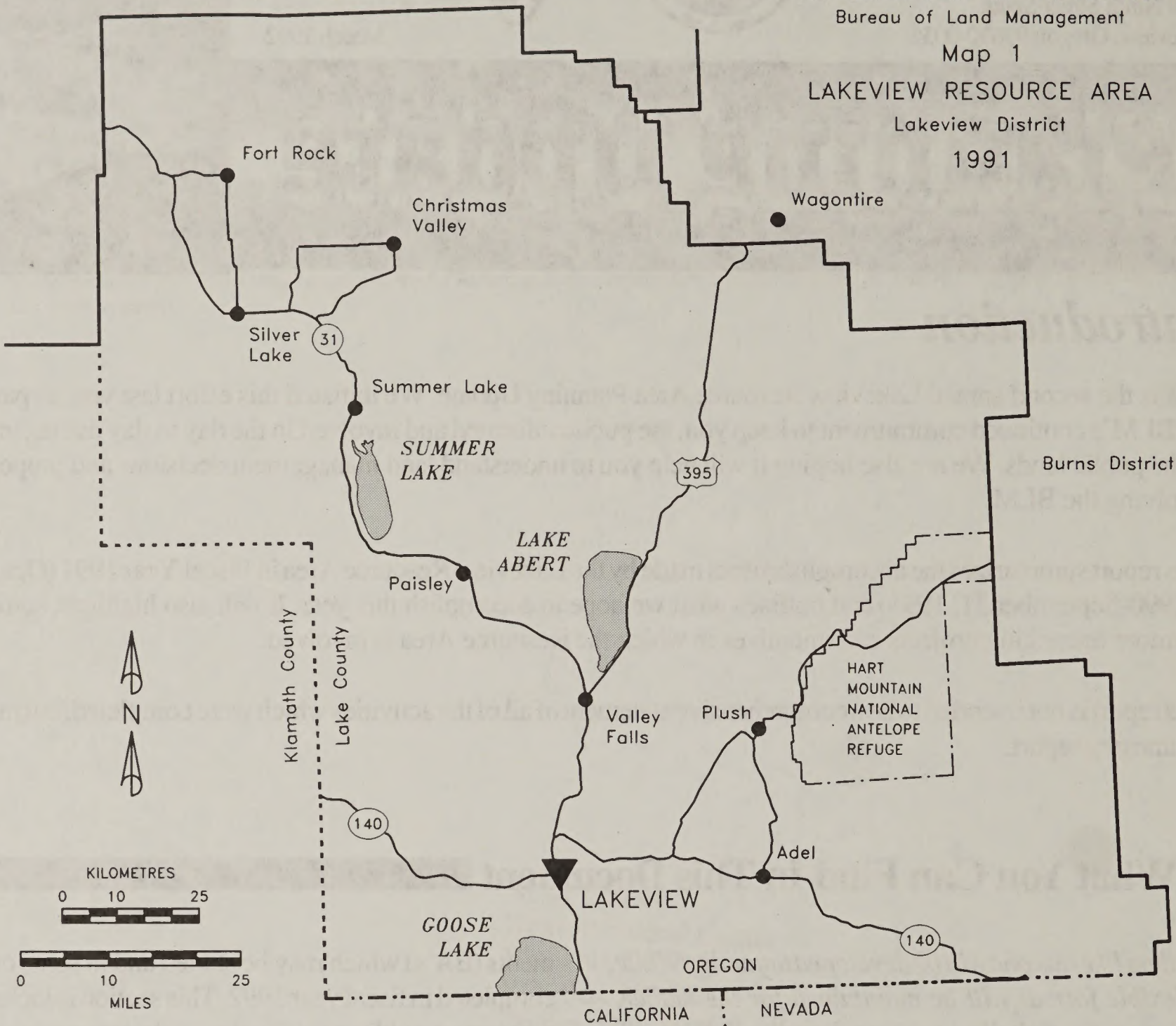
U.S. DEPARTMENT OF THE INTERIOR  
Bureau of Land Management

Map 1

LAKEVIEW RESOURCE AREA

Lakeview District

1991



LEGEND	
	District Office
	District Boundary
	State Boundary
	County Boundary
	National Park Service Boundary
	U.S. Highway
	State Highway



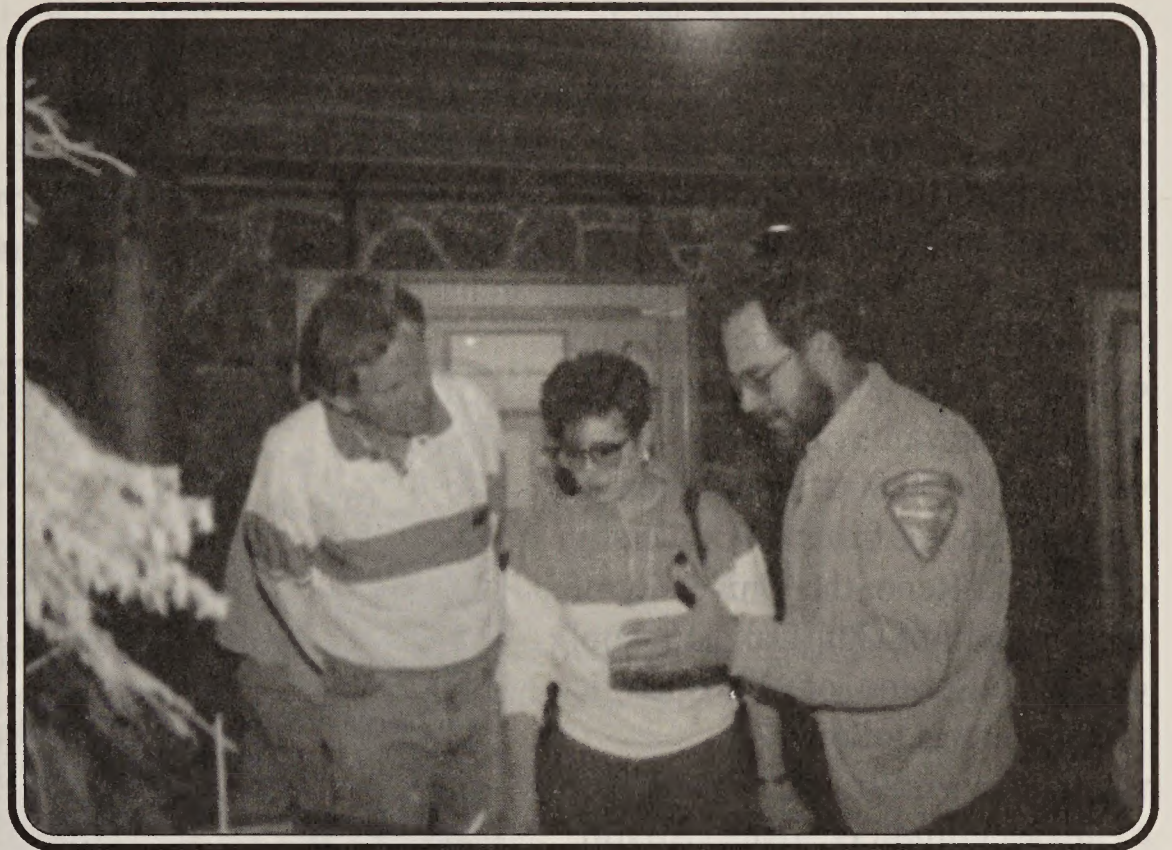
---

---

## *Adventures in the Past:*

# Great Basin Tribute

In the United States the BLM manages more than 150,000 archaeological and historical sites; more than any other agency in the nation. In 1989 the Adventures in the Past program was developed to provide focus and exposure to the BLM's ongoing efforts to educate the public about the country's archaeological and historic resources. Through Adventures in the Past, the BLM is developing partnerships with public and private groups, industry, Native Americans and individual volunteers. These partners work with the BLM in managing archaeological and historic resources and in making resources increasingly available to the public for recreational and educational purposes.



*Visitors view "Peoples of the Sage" Exhibit at the High Desert Museum.*

Some good examples of partnerships have been developed in the Lakeview Resource Area. Cooperative agreements are in place with the University of Nevada-Reno and the University of Oregon to provide training in cultural resources management to students in exchange for important new information on the cultural resources of the area. Last year alone four individual volunteers spent a combined total of twenty weeks completing valuable inventory, recording, and analysis on cultural sites. There is also a community group in the formative stages which is interested in public education focusing on site vandalism, artifact collection, and understanding the importance of cultural resources.

In addition to partnerships, the BLM is holding tributes to the regional archaeology of the west. Last year's event was the Great Basin Tribute and the Lakeview Resource Area was actively involved in the festivities. The kickoff event for the Great Basin

Tribute was the opening at the High Desert Museum in Bend, Oregon of an exhibit entitled "Peoples of the Sage". This exhibit was viewed by more than 150,000 people from April through November and was designed in a cooperative effort between the Lakeview Resource Area and the High Desert Museum. Another exhibit was designed and built by the resource area entitled "Ducks in the Dunes". This exhibit interpreted what we know about the food sources of prehistoric native peoples and was displayed at the original Nevada Capitol Building in Carson City, Nevada, the Lake County Museum and the Lakeview District and Klamath Falls Resource Area offices.

The Great Basin Tribute is now over but our goal of increasing the public's use and enjoyment of the BLM's archaeological and cultural resources, of showing we are a good steward of those resources, and reducing their destruction will continue on into the future.



---

---

# *The Lakeview Resource Area Volunteer Program*

The Lakeview Resource Area has had an active volunteer program for a number of years. In 1991 a total of 47 volunteers worked on projects such as litter cleanup, site planning for the Doherty Slide hang gliding launch site, sign installation, rock art inventory and analysis, and mapping, testing and evaluating archaeological sites. When all of the benefits and expenses were tallied at the end of the year, the value of the work done exceeded \$150,000. In addition to the field schools from the University of Nevada-Reno, the University of Oregon and the South Dakota School of Mines, some of the specific projects are as follows:

- One volunteer from Austin, Texas spent 8 weeks assisting with rock art inventory, archaeological site surveys, reports and cataloguing artifacts.
- Mary Ricks, a student at Portland State University, spent two weeks assisting with field schools and rock art inventory work.
- Alanah Woody came from the University of Nevada-Reno for 4 weeks to record rock art, assist with the field schools and other projects.
- Desna Davis, another volunteer from the University of Nevada-Reno spent 6 weeks recording rock art sites and assisting with the field schools.
- The Eugene Chapter of the Izaak Walton League joined forces with individual volunteers from Lakeview to build a mile of fence on the Camas Creek riparian project.

- Members of the Pacific Northwest Four Wheel Drive Association spent Memorial Day Weekend on their annual volunteer project in Christmas Valley constructing a trail and vehicle barricade at Crack-In-The-Ground.



*Volunteer from the Eugene Chapter of the Izaak Walton League work on riparian fence project.*

Every year the Lakeview Resource Area has opportunities for individuals or groups who would like to volunteer. If you are interested, please contact Lisa Swinney at the Lakeview District office for further information about the volunteer program.



---

---

# Recreation Program

## *1991 Accomplishments*

The Northern Great Basin Interpretive Project, referred to as the "Oregon High Desert Discovery" began to take shape this past year involving a team of representatives from the BLM's Lakeview and Burns Districts and the Hart Mountain and Malheur National Wildlife Refuges. Themes, site drawings, and mock-ups for interpretive facilities which are to be located along the route from Lakeview to Burns via the Warner Wetlands Area of

Critical Environmental Concern, Hart Mountain National Antelope Refuge, Steens Mountain, Diamond Craters Outstanding Natural Area and Malheur National Wildlife Refuge have been developed and introduced for public comment. It is hoped the project will coordinate the interpretive plans identified in each agency's land use plan thus creating an exceptional experience for visitors.

---

---

## *Warner Sucker Passage*

The federally listed Warner sucker was the recipient of a lot of attention from the Bureau of Land Management, U.S. Fish and Wildlife Service, the Oregon Department of Fish and Wildlife and The Nature Conservancy last year. As part of intensive rescue effort, eighty of the fish were captured, held in temporary holding ponds at the Summer Lake Wildlife Refuge and then shipped to the National Fish Hatchery in Dexter, New Mexico.

edge of the dam. Baffles in the chute slow the speed of the water enough to allow fish to swim up and over the dam.

This was the first fishway built specifically with Warner suckers in mind. The effectiveness of the design will be evaluated and if it is successful, there are tentative plans to build more fishways on other streams in the Warner Valley.

Then last fall, all of the groups mentioned before and the adjacent private landowner, Don Robinson, joined forces to construct a fishway on Twentymile Creek. The fishway bypasses a thirty year old irrigation structure which blocked Warner suckers and native redband trout from swimming upstream to spawn. The project was the culmination of four years of planning and design. In order to build the fishway itself, the top of the dam had to be leveled and the downstream face had to be redone. The fishway itself is a long chute along the outer



*Construction of the Twentymile Creek Fishway.*



---

---

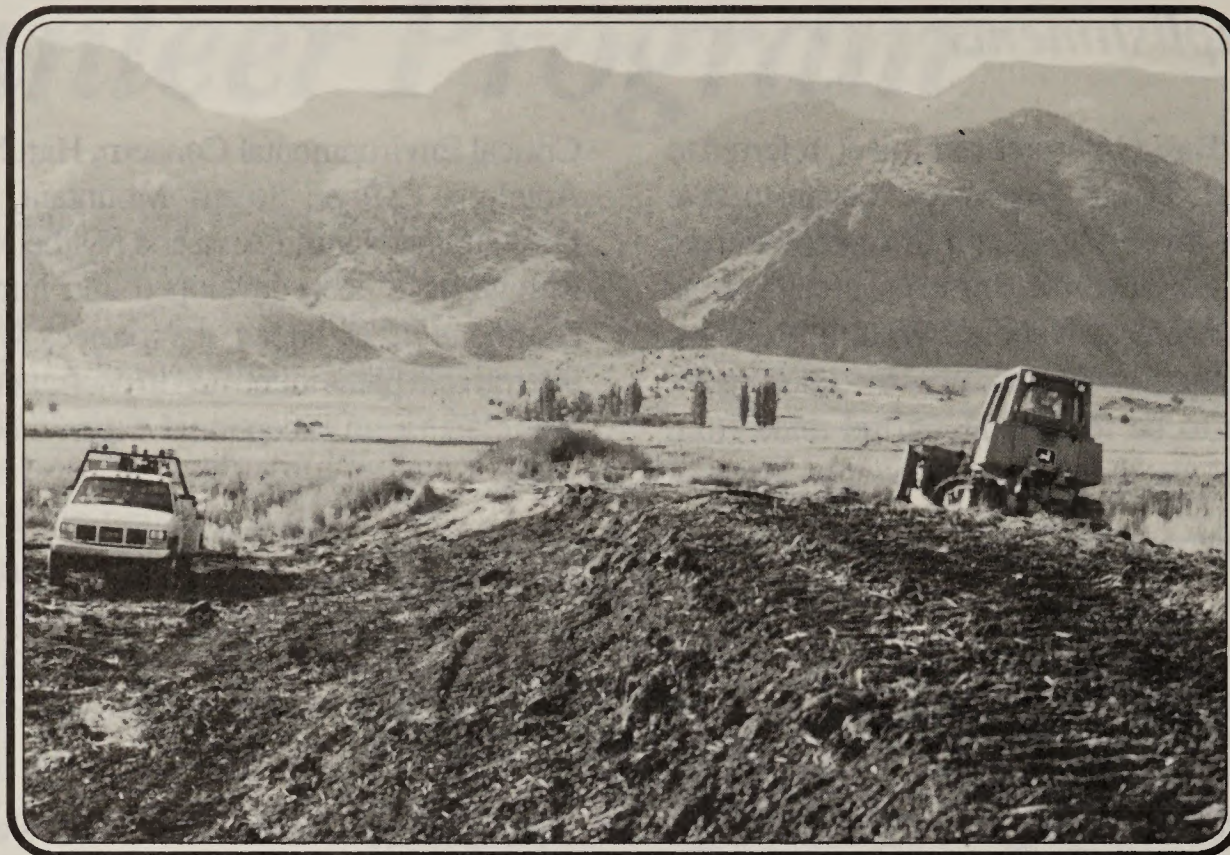
# Dirt Work in the Wetlands

The Warner Valley is an area of rich and diverse wetlands about 35 miles east of Lakeview. In 1989 the Lakeview Resource Area completed a management framework plan amendment which designated about 50,000 acres as the

Warner Wetlands Area of Critical Environmental Concern (ACEC) to be managed primarily for waterfowl habitat. The following year an activity plan was completed which set management direction in the ACEC for years to come.

Through the assistance of The Nature Conservancy, about 7500 acres of privately owned land was acquired by the BLM within the boundary of the ACEC in 1989. At one time most of the acquired land was irrigated hay fields, but over the years, the system of irrigation dikes and water control structures had fallen into disrepair and was essentially unusable to control water for irrigation.

Specialists believe that in the past, water from Hart Lake would spill out into the area north of Hart Bar creating marsh habitat and areas of open water which were important to waterfowl for nesting, feeding and raising their young. Land use changes have modified the natural flow so that except in high water years, lake water does not spill over into the area. In an attempt to simulate what is thought used to occur naturally,



*Dike construction in the Warner Wetlands.*

specialists determined it was desirable to irrigate about 3200 acres of the area which used to flood nearly every year. This was no easy task given the condition of the existing irrigation system.

In 1990 Ducks Unlimited, through a chal-

lenge grant program, gave the BLM \$35,000. This was enough to set up a high volume irrigation pump to pump water from Hart Lake. In 1991 the resource area received a \$215,000 grant from the North American Wetlands Conservation Council for work in the wetlands. This was just the boost needed to get the work on the irrigation system itself done.

Starting in late summer last year, the BLM force account crew either constructed or reconstructed 26 miles of dike and installed 56 water control structures. When all the work was done, the crew had moved nearly a half million cubic yards of dirt. That is about the same as piling dirt onto a football field about 300 feet deep. Work in the Warner Wetlands is continuing. At the present time the BLM is in the process of obtaining permits to drill an irrigation well to supplement water from Hart Lake so waterfowl will have the habitat they need to raise their young in all but the most serious drought years.



---

---

# *Program Summaries, 1991*

## *Accomplishments,*

## *Work Planned for 1992*

This section of the Lakeview Resource Area planning Update provides a general description of each of the area's natural resource programs. Program descriptions are followed by the major accomplishments from last year and what we plan to accomplish this year.

This planning update will also serve as a Rangeland Program Summary for the purpose of identifying affected interest status for future projects. If you believe that any of the future actions indicated in this update may affect your interests please contact the District Manager in writing by April 30, 1992. Please be specific about those actions which are of concern to you. Note the allotment or allotments involved and your reason for believing that you have an interest which could be affected by future actions. The district manager will provide those determined to be an affected interest with an opportunity to participate in grazing management plans in the affected allotments.

**Botany** The botany program ensures that special plant habitats are protected in the operation of the BLM's multiple use programs. This is achieved by conducting plant surveys on public lands, monitoring population trends of sensitive species and developing habitat management plans to ensure protection of sensitive species.

### *1991 Program Accomplishments*

- Botanical inventories amounting to 200 plots over 10,000 acres were completed in the Warner Wetlands.
- 13,000 acres were inventoried in areas including Table Rock, Lone Mountain, Hogback Butte, Elk Butte, Chicago Valley and Stateline Canyon.
- Botanical clearances in support of other programs were completed over 4,000 acres.
- The following sensitive species were monitored: *Gratiola heterosepala*, *Rorippa columbiae*, *Ivesia rhypara* and *Eriogonum prociduum*.
- Completed a challenge cost share project with the Nature Conservancy in the North Sinks and Benjamin Lakes area; no special status plant species were found.
- A travelling display "How Native Plants Survive in the

Desert" was developed and displayed at 5 different fairs and the Lakeview District Office.

- Monitoring exclosures were built at Foley and Featherbed Lakes to evaluate impacts from livestock on Columbia cress.
- A guidebook to the special status plant species of the Lakeview Resource Area was prepared.
- Project clearances and botanical inventories from 1979-1991 were mapped.
- The Lakeview Resource Area General Plant list was updated and computerized.

### *1992 Program Plans*

- Enter into a challenge cost share agreement with The Nature Conservancy to identify potential ACEC's and Research Natural Areas with botanical values in the Lakeview Resource Area.
- Analyze the botanical inventory data collected in the Warner Wetlands in 1991.
- Revise the Black Hills Habitat Management Plan.
- Complete a habitat management plan for *Gratiola heterosepala*.
- Construct a monitoring exclosure at the *Gratiola heterosepala* site.
- Continue monitoring the following sensitive plant species: *Gratiola heterosepala*, *Rorippa columbiae*, *Ivesia rhypara*, *Eriogonum cusickii*, *Eriogonum prociduum*, and *Eriogonum crosbyae*.
- Complete botanical clearances on 14,500 acres for 19 projects.

### *Cultural/Paleontological*

**Resources** BLM's cultural and paleontological resource management programs identify, plan the appropriate use of, and manage cultural and paleontological resources on public land. These programs must comply with federal and state law governing preservation as well as the principles of multiple use. The programs strive to protect cultural and paleontological resources on public lands for scientific and research purposes as well as for future generations.



---

---

## ***1991 Program Accomplishments***

- Once again cooperated with the University of Nevada-Reno and the University of Oregon to operate two university field schools. Through this program the students get needed field experience and the BLM gains valuable information on the cultural resources of the area.
- Cooperated with the South Dakota School of Mines in a two week field class on paleontology in the Fossil Lake area from which the BLM gained valuable inventory information.
- Designed and built a travelling display entitled "Ducks in the Dunes" which was exhibited in the Lake County Museum, the original Nevada Capitol building in Carson City, Nevada and the Lakeview District and Klamath Falls Resource Area offices.
- In cooperation with the Oregon High Desert Museum in Bend, OR designed and built the "Peoples of the Sage" exhibit which was on display in the High Desert Museum from April through November and which was viewed by an estimated 150,000 people.
- Four volunteers spent a combined total of 20 weeks completing work such as rock art inventory, recording and analysis, site surveys and reporting and cataloguing artifacts.
- Completed clearance work in support of other programs.
- In cooperation with the U.S. Forest Service, Oregon Division of State Lands and the Oregon State Patrol conducted a public meeting to inform the public of the legal statutes relating to collection of artifacts.

## ***1992 Program Plans***

- Continue to cooperate with the University of Nevada-Reno, the University of Oregon, and the South Dakota School of Mines in their field school programs.
- Continue an active clearance program in support of other resource programs.
- Work with a community ad hoc committee interested in public education specific to cultural site vandalism, artifact collection, and an understanding of the importance of cultural resources.

**Fire/Aviation** BLM's fire and aviation programs are important support programs. Fire management has two major focus programs, suppressing wild fires and prescribed burns to benefit mainly the wildlife and range management programs. The aviation program supports

various activities including firefighting and wildhorse and wildlife census surveys.

## ***1991 Program Accomplishments***

- Responded to a total of 47 fires in the Lakeview Resource Area totaling 5 acres.
- Due to prolonged drought, increased fire prevention and outreach activities.
- Conducted a fire prevention day with students from A.D. Hay Elementary School in Lakeview.
- Participated in an interagency fire prevention symposium for grade school students in Lakeview, Adel, Plush, Paisley and Bly, Oregon.
- Both helicopters and fixed wing aircraft were used to monitor water sources for wildhorses as the drought continued.

## ***1992 Program Plans***

- Continue to respond to all reports of wildfires.
- Support the range and wildlife programs in planning and implementation of prescribed burns.
- Participate in interagency fire prevention programs with students.

**Forestry** The forestry program in the Lakeview Resource Area is almost solely limited to sales of fuelwood. The objective of the program is to meet the public's demand for fuelwood without negative impacts to other resource values.

## ***1991 Program Accomplishments***

- Completed a programmatic environmental assessment for firewood cutting.
- Issued 6 fuelwood cutting permits for a total of 18 cords.

## ***1992 Program Plans***

- Continue to issue fuelwood permits to meet the public demand.

## **Hazardous Materials**

**Management** Protecting public health and safety and the environment is the priority of the hazardous materials management program. A major part of the pro-



---

---

gram is the investigation and cleanup of public land sites contaminated with hazardous materials in conformance with federal and state laws.

### ***1991 Program Accomplishments***

- Cooperated with the Oregon Department of Environmental Quality (ODEQ) in monitoring and testing to determine the extent of contamination at the Alkali Lake Chemical Disposal Site.
- Cleanup and investigation of 6 unauthorized household material dumpsites.
- Completed a Corrective Action Plan (CAP) for the Lakeview BLM Warehouse underground fuel and waste oil storage tank removal.
- Completed a contract cleanup of unidentified chemical storage barrels at the Lakeview Warehouse and Fort Rock Guard Station.

### ***1992 Program Plans***

- Continue coordination efforts with ODEQ for public safety and cleanup efforts at the Alkali Lake Chemical Disposal Site, including fencing about 640 acres of the site for public and livestock safety.
- Complete unauthorized dump cleanup and investigations as they arise.
- Continue to implement the CAP at the Lakeview Warehouse Site.

**Lands and Realty** The lands and realty programs complete lands actions in support of BLM resource management programs and authorizes public land uses by the public sector. These actions could include specific land use authorizations, direct land sales, land acquisitions and control of unauthorized use and occupancy.

### ***1991 Program Accomplishments***

- Completed the sale of 320 acres to Sam Dinsdale.
- Granted permits for access for brine shrimp fishing on Abert Lake and a haystack in Christmas Valley.
- Issued the Horse Ranch occupancy lease.
- Issued one right-of-way for private land access, two for Bonneville Power Administration powerline facilities and three to the Lake County Road Department.

### ***1992 Program Plans***

- Continue to work on a land exchange with the State of Oregon in the Warner Valley involving 1494 acres of public lands administered by the State and 1610 acres administered by the BLM.
- Continue work on the Lynch Exchange involving 3536 acres of private land and 4790 acres of land administered by the BLM.
- Complete the 241.26 acre Porter Sale.
- Continue work on the 80 acre Vloedman Sale and the 40 acre Pettis Sale.
- Resolve one agricultural and one occupancy trespass.
- Issue an estimated 10 rights-of-way.

**Law Enforcement** As the caretaker of public land in Lake and a portion of Harney Counties, BLM is mandated by law to manage and protect the land and its resources. In FY 1991 the Lakeview District hired its first law enforcement ranger. Since then the major emphasis has been on continued coordination with local law enforcement agencies, and preventing destruction of cultural and archaeological resources and theft and destruction of public property.

### ***1991 Program Accomplishments***

- Focused on-the-ground patrols around the Christmas Valley Back Country Byway, hunting season in the Beaty Butte area and protection of cultural resources in the Warner Valley.
- Canceled the Law Enforcement Agreement with Lake County.
- Assisted with public meetings addressing theft and vandalism of cultural resources and public property.

### ***1992 Program Plans***

- The district law enforcement ranger will be relocated to Lakeview thus allowing for considerably more patrol time in the Lakeview Resource Area.
- The District Law Enforcement Plan will be completed.
- Develop a community action plan to address vandalism problems.

**Minerals** The Lakeview Resource Area minerals program focuses on administration of mining claims, mainly for sunstones; leasable minerals such as sodium and geothermal resources; and saleable minerals, such as sand and gravel on public lands.



---

---

## 1991 Program Accomplishments

- Processed 6 Notices for sunstone prospecting.
- Processed 1 Notice for perlite prospecting to Atlas Precious Metals, Inc.
- Issued 2 Free Use Permits to Lake County and the Oregon Department of Transportation for a total of 4,000 cubic yards of gravel.
- Processed 15 mineral material sales for a total of 5,000 cubic yards of sand, gravel and cinders.
- Issued Canadian Occidental Petroleum, LTD. two sodium prospecting permits for sampling on Abert Lake.
- Completed a total of 30 compliance inspections on mining claim notices and prospecting permit operations.
- Completed 6 mineral reports which examine the mineral potential of an area in support of 2 land sales and 1 land use permit for the BLM and land exchanges and Wild and Scenic River Studies for the U.S. Forest Service.

## 1992 Program Plans

- Over the counter activity such as prospecting permits, Free Use Permits and mineral material sales are anticipated to occur at about the same level as in 1991.
- Continue to perform compliance inspections on permitted activities.
- Continue to complete mineral reports in support of other programs.

**Range Management** BLM's range management program administers livestock grazing activities on about 3.2 million acres of land in Lake and Harney Counties. Each year the Lakeview Resource Area issues grazing licenses authorizing animal unit months (AUM's) on 127 public land allotments. A percentage of the grazing fees collected goes into the U.S. Treasury, but most is returned to the county or district to be used for range improvement projects designed to benefit wildlife and watershed resources while improving conditions for livestock grazing.

The range program also collects inventory data and monitors range conditions on public lands. Information on vegetation utilization levels and trend are collected and evaluated to determine whether allotment goals and objectives are being met.

## 1991 Program Accomplishments

- In fiscal year 1991 the following projects were completed:
  - Guano Fence - this fence created a riparian pasture in O'Keefe Individual Allotment #0216. It increases the management options for Guano Creek.
  - Rogers Seeding - this crested wheatgrass seeding was mitigation for the Deep Creek Riparian Exclosure. It encompasses 400 acres in the Greaser Drift Allotment #0205. It will be used as a winter use area.
  - Greaser Seeding - this crested wheatgrass seeding was mitigation for Greaser Slough Wetland Exclosure. It encompasses 800 acres in the Greaser Drift Allotment #0205. It is used for trailing and gathering only.
  - Wheatgrass Waterhole - this waterhole is located in the East Jug Allotment #0433 and will provide water in a newly fenced pasture that previously had no water.
  - Camas Reservoir - this reservoir is located in Hickey Individual Allotment #0202 and is mitigation for seasonal water lost due to Camas Riparian Pasture.
  - Brim Burn - this burn was seedbed preparation for a crested wheatgrass seeding for improved management and gathering facilities. (See feature article)
  - Button Springs Well - this well was funded by Lake County range improvement funds and provides water to a newly created pasture.
  - Button Springs Pasture Fence - this fence created a fourth pasture to be used in a rest rotation grazing system.
  - Button Springs Prescribed Burn - this burn was conducted to reduce invading juniper and to improve vegetative conditions of the native grasses.
  - West Cinder Butte Prescribed Burn - this prescribed fire was conducted to improve vegetative conditions along an important mule deer transition area. Bitterbrush was also seeded to improve the existing stands.
- Resolved one grazing trespass case.
- Licensed a total of 80,328 AUM's.
- Collected a total of \$152,636 in grazing fees.
- Monitored 75 grazing allotments.
- Administered a noxious weeds spray agreement and contract with Lake County amounting to about \$5,000.

## 1992 Program Plans

- Allotment management plans will be completed for the Abert Seeding, Silver Creek and East Green Mountain allotments.
- Allotment evaluations will be completed on the follow-



ing allotments; Hickey Individual, Sagehen, Schadler, Fisher Lake, Hickey, Paisley Flat, X.L., Northeast Warner, North Bluejoint, Coyote-Colvin, Silver-Bridge Creek, Ward lake, Murdock, Oatman Flat, South Poverty, Corn Lake and Hogback Butte.

- Monitor 75 allotments.
- East Jug Fence - Build about 2 miles of 3-strand barbed wire fence in order to improve livestock distribution.
- East Jug Southwest Pasture Pipeline Extension - (see EA register #92-3).
- Roger's Fence - Create an individual use area within the Greaser Drift Allotment #0205 as mitigation for the Deep Creek riparian enclosure.
- Brim Fence - Construct 2 miles of 3-strand fence to create a new pasture for improved livestock management in the ZX Christmas Lake Allotment #0103.
- Boundary Spring - Reconstruct an existing spring development in the Upper Bridge Creek Allotment #0701 to improve flow and water storage.
- Begin work on a study to assess seeding native grasses to rehabilitate rangeland dominated by shrubs and annual grasses.
- Continue to administer a noxious weeds spraying contract with Lake County.

**Recreation Resources** Public lands in the Lakeview Resource Area offer a wide variety of recreation opportunities. The program strives to provide quality recreation while protecting sensitive resources, expanding visitor services and interpretation, and enhancing outdoor

recreation through partnerships. Initiatives such as Back Country Byways and Watchable Wildlife provide focus and funding to increase recreation opportunities.

## *1991 Program Accomplishments*

- Built a trail and vehicle barricade at Crack-In-The-Ground.
- Installed Christmas Valley Back Country Byway entry signs.
- Upgraded campsites at Duncan Reservoir.
- Replaced and installed Back Country Byway directional signs on the Christmas Valley and Lakeview to Steens byways.
- Constructed the foundation pad for the Hart Bar Visitor contact site in the Warner Wetlands.
- Cooperated with the Lake County Chamber of Commerce and the Fremont National Forest in construction of the new Lakeview Welcome Center.
- Cooperated with the Lake County Chamber of Commerce and the Fremont National Forest in designing and printing the Lakeview Hang Gliding brochure.
- Placed visitor orientation maps at Duncan Reservoir, Crack-In-The-Ground and the Lost Forest.
- Coordinated activities with the U.S. Forest Service on the Desert Intertie Trail.

## *1992 Program Plans*

- Install 2 Back Country Byway Kiosks on the Christmas Valley Back Country Byway.
- Construct parking and launch facilities at the Doherty Slide Hang Gliding launch site.
- Install Watchable Wildlife Interpretive signs at Abert Lake and the Warner Wetlands.
- In cooperation with the U.S. Forest Service, construct an interpretive kiosk in the town of Paisley.
- Install two restrooms at Hart Bar Visitor Contact Site in the Warner Wetlands.



*Volunteers from the Pacific Northwest For Wheel Drive Association work on their annual volunteer project.*



- Install interpretive signing at the Highway Well Rest Area.
- Install signs marking the boundary of the Warner Wetlands Area of Critical Environmental Concern.
- Continue coordination and development efforts associated with the Oregon High Desert Discovery Tour Route (See feature article)

## Riparian/Wetland

**Management** The Lakeview Resource Area is responsible for the care of about 100,000 acres of wetlands and 131 stream miles of riparian habitat. In 1989 the Warner Lakes Plan Amendment for Wetlands and Associated Uplands was completed. Subsequent Activity Plans have since been finished which address specific management actions in the Warner Wetlands. The major emphasis of these programs is now to implement those plans and to continue to inventory the ecological conditions of riparian corridors, develop or revise grazing, wildlife and related activity plans within priority habitats, and monitoring management actions across the resource area.

The riparian and wetland management programs do not have individual funding accounts. This means that work accomplished in those areas is funded through a combination of range, wildlife and watershed monies.

## 1991 Program Accomplishments

- Received a \$215,000 grant from the North American Wetlands Conservation Council for work in the Warner Wetlands.
- Rebuilt 5 miles of dike and 5 water control structures as part of an effort to reconstruct the irrigation system on 3500 acres in the Warner Wetlands.
- Completed 22 miles of stream survey.
- In order to improve watershed quality and riparian habitat, eradicated a total of about 250 acres of invasive juniper at Juniper and South Springs and Moss and Mill Creeks.
- Constructed 4 miles of fence for the Guano Creek Riparian Pasture.
- Reconstructed 4 miles of fence around the Twelve Mile Creek riparian enclosure.
- Constructed 2 miles of fence for the Rabbit Creek riparian pasture.
- With the help of volunteer labor from the Eugene Chapter of the Izaak Walton League and local individuals constructed 1 mile of fence and cut juniper in the Camas Creek riparian pasture.

## 1992 Program Plans

- Complete 4,000 acres of wetland habitat inventory.
- Horse Creek Fence - Construct about 3.5 miles of fence in the Rahilly-Gravelly Allotment to allow for better riparian management.
- Parsnip Fence - build about 1/2 mile of fence at the mouth of Parsnip Creek Canyon to allow for better riparian management.
- Duncan Riparian Pasture - construct about 5 miles of fence around Duncan Reservoir and Duncan Creek to allow for better riparian management of the creek and lakeshore as well as for controlling livestock in the Duncan Reservoir Recreation Site.
- Duncan Juniper Management - Cut about 35 acres of juniper for riparian and aspen stand management.
- Hill Camp Juniper Management - Cut about 123 acres of juniper for improved aspen stand management.
- Beaty Butte Spring Enclosures - In a cooperative effort with Oregon Department of Fish and Wildlife, fence 13 springs in the Beaty Butte area to exclude or manage livestock.
- Geo and Sage Hen Spring Development Projects - development of springs to gain better distribution of livestock in order to enhance nearby riparian area.
- Reconstruct 5 waterholes to increase their water storage capacity.
- Boundary Spring - Reconstruct an existing spring development to supply reliable water to bighorn sheep and livestock.
- Complete maintenance work on 13 spring and riparian protection fences.
- Complete reconstruction work on the Warner Wetlands irrigation system amounting to 20 miles on new or reconstructed dikes and 46 water control structures.

## Wilderness

The wilderness program in the Lakeview Resource Area is now focused on Interim Management. In 1991 the BLM in Oregon completed the Wilderness reporting process. As a part of this process recommendations on 12 wilderness study areas in the Lakeview Resource Area totalling 423,270 acres were signed by the Secretary of the Interior and have been forwarded to the President. Until Congress acts on final designation of any of these areas as wilderness they will be managed so as not to impair their wilderness values. The following table shows the acreage recommendations which were forwarded.



WSA Name	Acres		
	Suitable	Non-Suitable	Total
Devil's Garden Lava Bed	28,160	1,520	29,680
Squaw Ridge Lava Bed	21,010	7,330	28,340
Four Craters Lava Bed	9,100	3,500	12,600
Sand Dunes	0	16,440	16,440
Diablo Mountain	85,470	27,650	113,120
Orejana Canyon	14,800	9,800	24,600
Abert Rim	23,760	0	23,760
Fish Creek Rim	11,920	4,700	16,690
Guano Creek	10,350	0	10,350
Spaulding	0	69,530	69,530
Hawk Mountain	69,640	0	69,640
Sage Hen Hills	0	8,520	8,520
Totals	274,210	148,990	423,270

## 1991 Program Accomplishments

- Completed monthly monitoring inspections of all wilderness study areas.

## 1992 Program Plans

- Continue interim management on all wilderness study areas including monthly monitoring inspections as a minimum.

**Wild Horses and Burros** The focus of the wild horse and burro program is to manage two Wild Horse Herd Management Areas on the Paisley Desert and near Beaty Butte. The goal of the program is to manage these areas in such a way as to maintain the natural habitat in a thriving ecological balance.

## 1991 Program Accomplishments

- Completed a herd census for both the Beaty Butte and Paisley Desert herd management areas to see how current numbers fit within allowable herd management guidelines. The following table shows the most recent census results and the maximum and minimum herd number thresholds as set by the herd management plans.
- Completed two monitoring flights to determine the status of available water for horses.
- Hauled water for horses to supplement available natural water sources.

Herd Area	1991	maximum	minimum
Beaty Butte	250	250	100
Paisley Desert	169	110	60

## 1992 Program Plans

- Complete two environmental assessments for proposed wildhorse gathers in the fall of 1992.
- Continue aerial monitoring of available water sources and supplement by waterhauling if necessary.
- Install 3 cattleguards within the Paisley Desert Wild Horse Herd Management Area in order to reduce instances of open gates which allows horses to move out of designated areas.

**Wildlife and Fisheries** The wildlife and fisheries program ensures that fish, wildlife and special status species habitats are protected in the operation of BLM's multiple use programs. This is achieved by conducting habitat and animal surveys on public lands, developing habitat management plans and other special purpose plans to ensure protection of critical wildlife values, designing habitat enhancement projects and monitoring of wildlife and other program activities to determine their effectiveness.

## 1991 Program Accomplishments

- Through cooperation and assistance with the Oregon Department of Fish and Wildlife constructed a wildlife guzzler on Big Juniper Mountain.
- Cooperated with the Peregrine Fund and the Oregon Department of Fish and Wildlife to release peregrine falcons in the Warner Valley.
- Through extensive cooperation with The Nature Conservancy, U.S. Fish and Wildlife and the Oregon Department of Fish and Wildlife the following work was completed in support of the Warner Sucker:
  - continued population studies
  - construction of a fishway on Twentymile Creek with the additional cooperation of Don Robinson.
  - constructed temporary holding ponds at the Summer Lake Wildlife refuge for Warner suckers
  - captured 80 suckers and transported them to the National Fish Hatchery in Dexter, New Mexico
- Continued cooperation with the Oregon Department of Fish and Wildlife as part of the Southeastern Oregon Elk Collar Study.



## 1992 Program Plans

- Monitor the South Warner Aquatic, South Warner Lakes, Warner Wetlands, and Silver Lake/Fort Rock habitat management plans.
- Work on the Devil's Garden elk habitat project, a challenge cost share project with The Rocky Mountain Elk Foundation which entails burning and seeding about 600 acres and constructing water developments.
- Construct 1/2 mile of fence in the Coglan Buttes which will create a 2000 acre big-horn sheep management area.
- Complete a challenge cost share agreement with The Nature Conservancy and the Oregon Department of Fish and Wildlife to do a study of waterfowl and shorebird use of Abert Lake.
- Continue coordination efforts with The Peregrine Fund and the Oregon Department of Fish and Wildlife for further peregrine falcon releases in the Warner Valley.



*Volunteers work on bighorn sheep guzzler project.*

- Continue coordination efforts with The Nature Conservancy, U.S. Fish and Wildlife Service and the Oregon Department of Fish and Wildlife with respect to the Warner sucker.
- Continued cooperation with the Oregon Department of Fish and Wildlife and the Southeastern Oregon Elk Collar Study.

# Environmental Assessment Register

The National Environmental Policy Act (NEPA) requires that an environmental analysis of the potential effects be completed for any on-the-ground actions before their approval. NEPA also requires such analysis be open to the public.

During fiscal year 1992, the Lakeview Resource Area will analyze several on-the-ground actions which may occur either this year or sometime in the future. A register of the environmental assessments (EA's) anticipated for completion in 1992 is provided below to facilitate public involvement in this process.

To receive any of the listed EA's, please notify the District Planning & Environmental Coordinator in writing at the Lakeview District Office. To make sure you identify the correct EA, indicate the EA Register Number and the Project Name when making your request. Because schedules and priorities are constantly changing it is important to let us know of your interest as early as possible to give the specialists time to fully consider your input.

District Register Number	Project Name	Proposed Action	Location	Critical Elements	Completion Date and Project Leader
91-16	North Bluejoint well and pipeline	Drill a water well and construct about 3 miles of pipeline to provide reliable water for livestock in the North Bluejoint Allotment. This would facilitate better livestock distribution in the allotment.	40 miles north-east of Plush, OR		EA-summer 1992; project spring 1993; Willie Street



District Register Number	Project Name	Proposed Action	Location	Critical Elements	Completion Date and Project Leader
91-17	Mac's Fence and Cattleguard	Construct 1.5 miles of 3-strand fence in Corn Lake Allotment. Implements rest rotation system and separates previously burned area from unburned area.	30 miles northeast of Lakeview		EA-summer 1992; project summer 1993; Willie Street
92-2	XL Division Fence	Construct about 12 miles of 3-strand barbed wire fence to implement a grazing system. The fence will also improve management around Abert Lake.	3 miles west of Abert Lake paralleling the shoreline for 12 miles in Allotment #0427		FONSI-10/24/91; project planned 8/93; Steve Beverlin
92-3	East Jug Southwest Pasture Pipeline Extension	Construct about 1 mile of water pipeline and associated water troughs in a newly developed pasture	7 miles west of Highway Well Rest Stop on Highway 395 in Allotment #0433.		FONSI-11/12/91; project planned 3/92; Steve Beverlin
92-4	Hope Well Pipeline	Construct 8 miles of pipeline in a crested wheatgrass seeding for improved livestock distribution for increased flexibility in management on west shore of Abert Lake.	45 miles north of Lakeview in the XL Allotment #0427		EA- Spring 1992; project planned 1993; Steve Beverlin
92-6	Hillcamp West Pasture Prescribed Burn	Prescribe burn about 40-80% of a 10,000 acre pasture in the Hillcamp Allotment. Will release native grasses and forbs, and reduce the amount of sagebrush. Will improve habitat for some wildlife species.	48 miles southeast of Lakeview along the Nevada border in the Hillcamp Allotment #0215.		EA Spring 1992; project planned-1993; Steve Beverlin
92-8	Paisley Wild Horse Herd Management Area wild horse gather	Remove about 100 horses from the management area for maintenance of ecological balance	35 miles north of Lakeview	possibly Diablo Wilderness Study Area	EA- Spring 1992; Gather Fall 1992; Steve Beverlin
92-10	Round Mountain Juniper Management	Cut about 300 acres of invasive juniper for improved spring and stream flow and to increase native herbaceous vegetation.	35 miles southeast of Lakeview in the Round Mountain Allotment		EA-summer 1992; project planned 1993; Steve Beverlin
92-13	Hillfield Waterholes	Construct a waterhole which will provide reliable water for bighorn sheep and livestock.	Hillfield Allotment, 3 miles west of Paisley		EA-summer 1992; project planned 1993; Steve Beverlin



District Register Number	Project Name	Proposed Action	Location	Critical Elements	Completion Date and Project Leader
92-15	Vloedman Sale	A direct sale of 80 acres of public land near Fort Rock.	T. 27 S., R. 16 E., Section 7, E1/2NW1/4		EA-March 1992; Sale-spring 1992; Dan Stewardson
92-16	Deep Creek Fence	Construct about 4 miles of fence to create a riparian pasture for improved management on Deep Creek.	Deep Creek, about 25 miles east of Lakeview		EA-spring 1992; project summer 1992; Alan Munhall
92-17	Beaty Butte Wild Horse Gather	Gather and remove about 200 horses from the Beaty Butte Wild Horse Herd Management Area to maintain an ecological balance.	60 miles east of Lakeview		EA-spring 1992; project-fall 1992; Willie Street
92-18	Lakeview District Geothermal Leasing EA	Supplement the Summer Lake, Warner Valley and Lakeview District geothermal leasing EA's.	Lakeview Resource Area-wide	Foskett Spring, Warner Valley, Summer Lake	begin scoping summer 1992
92-19	EA and MFP Amendment for Juniper Management in Riparian Areas	Manage juniper invasion in riparian areas and associated sites on about 13,000 acres. The Plan Amendment will allow control of juniper in areas closed to control in the MFP.	Deep Creek, 12 Mile Creek, 20 Mile Creek and Camas Creek Canyons	Fish Creek Rim Wilderness Study Area	EA-scoping to begin spring 1992; Alan Munhall
92-20	Lone Grave Prescribed Burn	Burn about 45% of a 2100 acre area to increase native grasses and forbs in the Beaty Butte Allotment in order to maintain biodiversity.	60 miles east of Lakeview	Adjacent to Spaulding Wilderness Study Area	EA-summer 1992; project-fall 1993; Willie Street
92-21	West Bluejoint fence	Construct about 4.5 miles of 3-strand barbed wire fence to close gaps in an allotment boundary fence.	75 miles northeast of Lakeview at the north end of the Warner Valley		EA-summer 1992; project-fall 1993; Willie Street
92-22	Corporation Draw Pipeline	Construct 4 miles of water pipeline from an existing well for better distribution of livestock on an existing seeding.	60 miles north-east of Lakeview in the Corn Lake Allotment #0514		EA-summer 1992; project-spring 1993; Willie Street
92-23	Langdon Spring Fence and Seeding	Realign a pasture boundary. Construct 3-wire fence on south boundary of the allotment (1.75 miles). Interseed about 250 acres with basin wildrye.	five miles northeast of Christmas Valley		EA-summer 1992; project fall 1992; Rick Fritz
92-24	Northeast Hogback prescribed burn	Prescribe burn about 640 acres to increase native bunch grasses and forbs; rejuvenate bitterbrush; reduce juniper invasion and sagebrush.	6 miles north of Fort Rock Guard Station		EA-summer 1992; project-fall 1993; Rick Fritz







**UNITED STATES**  
**DEPARTMENT OF THE INTERIOR**  
**BUREAU OF LAND MANAGEMENT**  
LAKEVIEW DISTRICT OFFICE  
1000 NINTH STREET SOUTH  
LAKEVIEW, OREGON 97630-0055

**OFFICIAL BUSINESS**  
**PENALTY FOR PRIVATE USE, \$300**

Forwarding and Return Postage Guaranteed,  
Address Correction Requested

**FIRST CLASS**  
**POSTAGE & FEES PAID**  
Bureau of Land Management  
Permit No. G-76