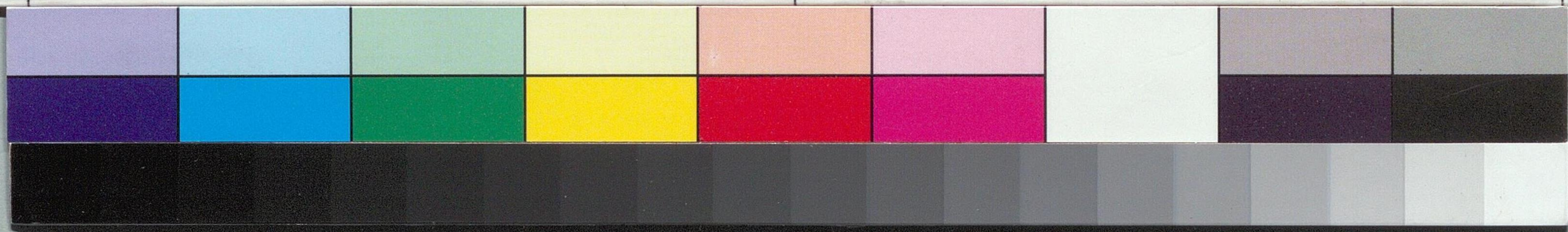
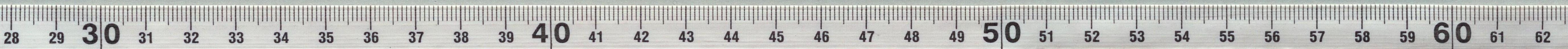
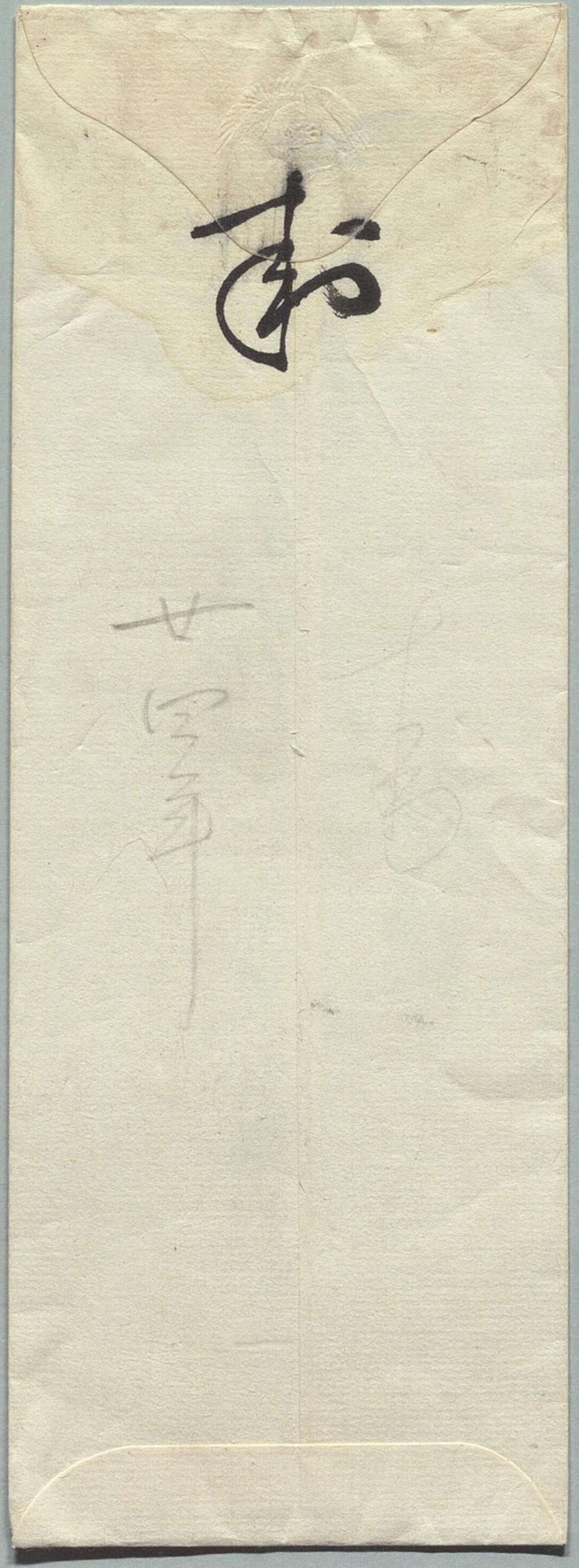


尾崎三良波

お増

柳屋お光



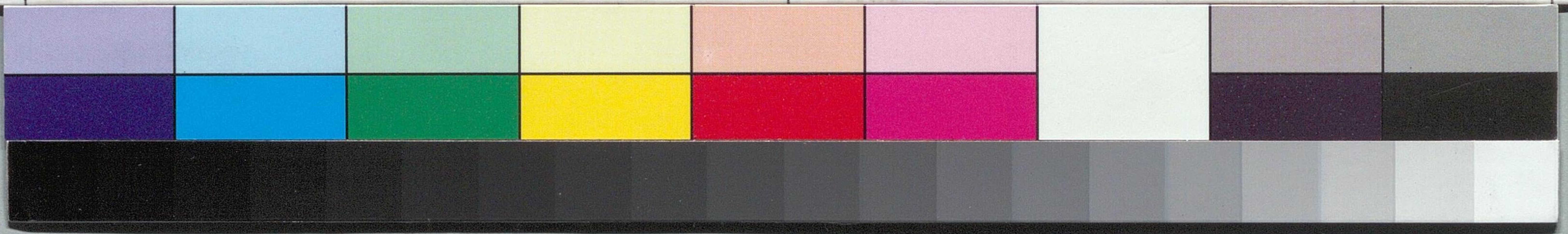


封

+

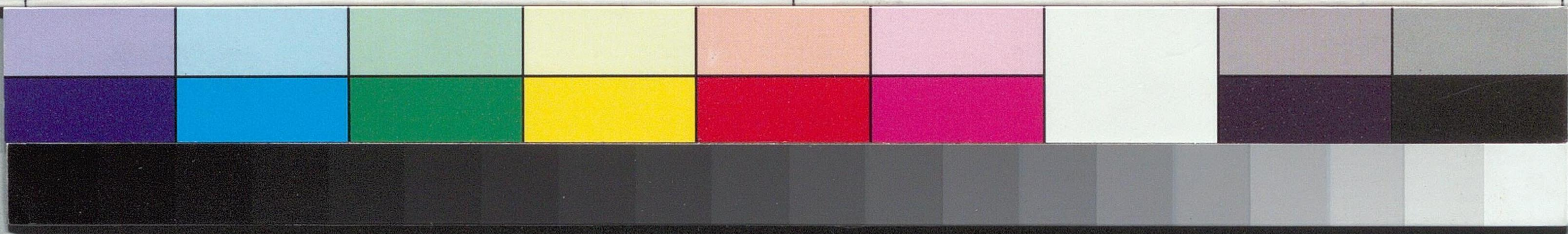
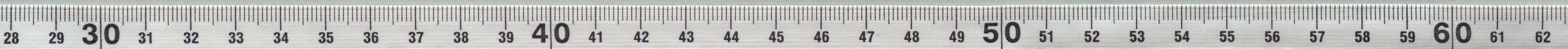
尾崎

三良



国立国会図書館 尾崎三良関係文書 106-6

Handwritten Japanese text on a vertical strip of paper, likely a document or letter. The text is written in cursive (sōsho) style. The characters are difficult to decipher but appear to include names and possibly a date or location. The strip is oriented vertically and is placed against a ruler for scale.



生年相傳入り多相違

席次表ハ生年相違ハ所考ニ在

之儀ハ以表ハ生年相違

初度ノ席次表ニ在

由者ハ生年相違ニ在

反ハ股節表又ハ生年相違

次表ナリ生年相違ニ在

了ルルハ生年相違

也

亦日甘

前光

尾崎三良

