

APPROVED LLOYD'S 4/6/23.
30/12/24 C. 2607

THE NORTH EASTERN MARINE ENGINEERING CO. LTD.

WALLSEND-ON-TYNE.

SCALE - 1 INCH = 1 FOOT.

BOILER

30/4/26

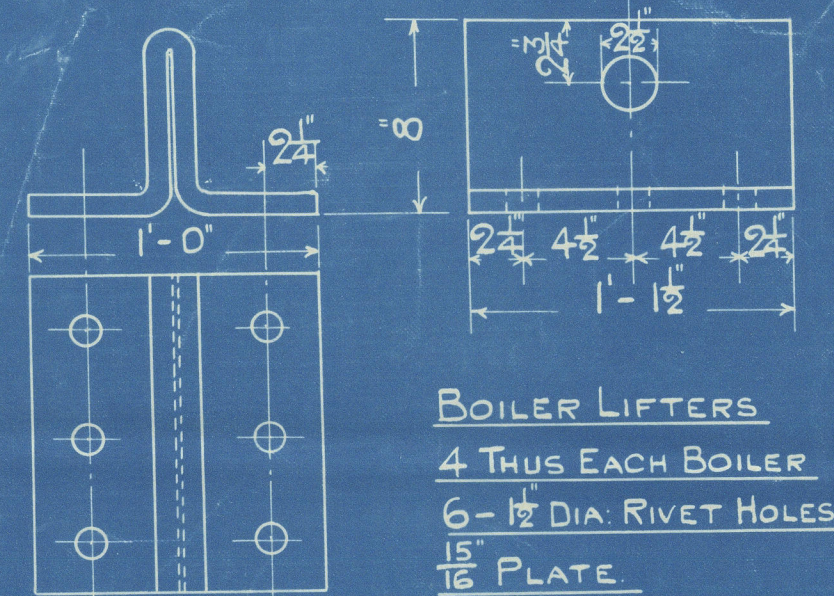
TO LLOYD'S REQUIREMENTS.

HEATING SURFACE	TUBES	1298	sq
	ELSEWHERE	360	
	TOTAL	1658	PER BOILER

WORKING PRESSURE = 180 LBS.
TEST = 320 "

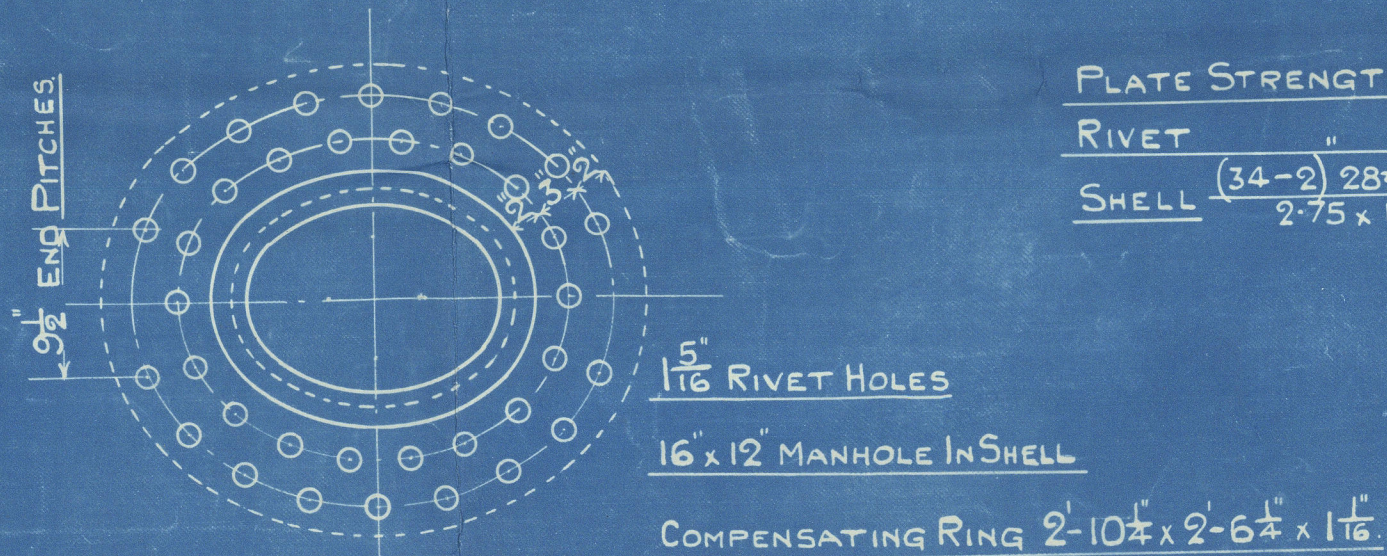
ALL PLATES, STAYS & RIVETS STEEL. SMOKE TUBES WROG IRON.
TENSILE STRENGTH OF SHELL PLATES 28 $\frac{1}{2}$ TO 32 $\frac{1}{2}$ TONS PER SQ IN.
GIRDER PLATES & LONGITUDINAL STAYS 28 TO 32 TONS PER SQ IN.
OTHER PLATES & SCREWED 26 - 30

ALL HOLES DRILLED IN PLACE AFTER PLATES ARE BENT.

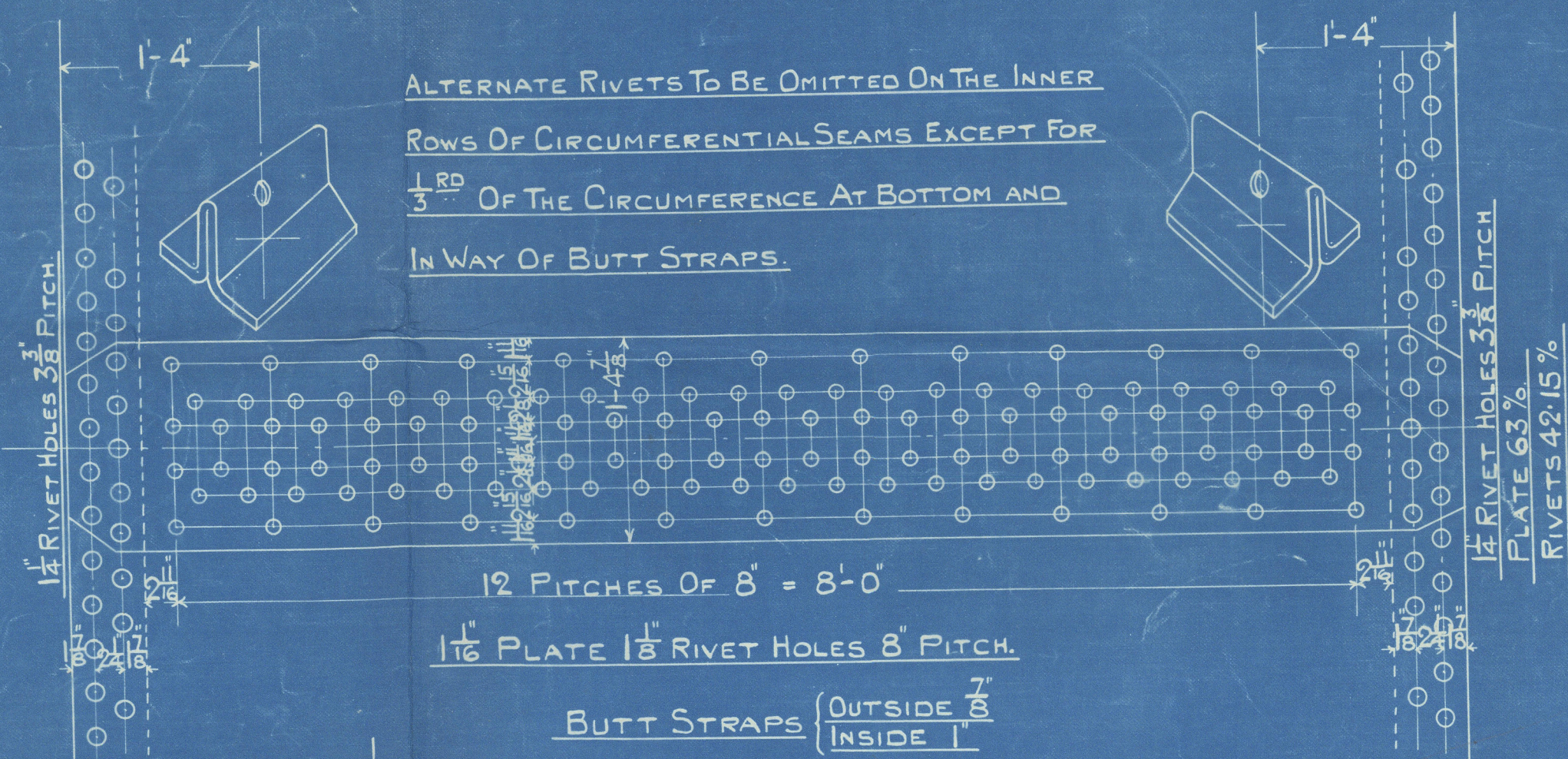


BOILER LIFTERS
4 THUS EACH BOILER
6-1/2 DIA RIVET HOLES
1/2 PLATE

PLATE STRENGTH 85.93%
RIVET 88.7
SHELL 2.75 x 156.875 181.8

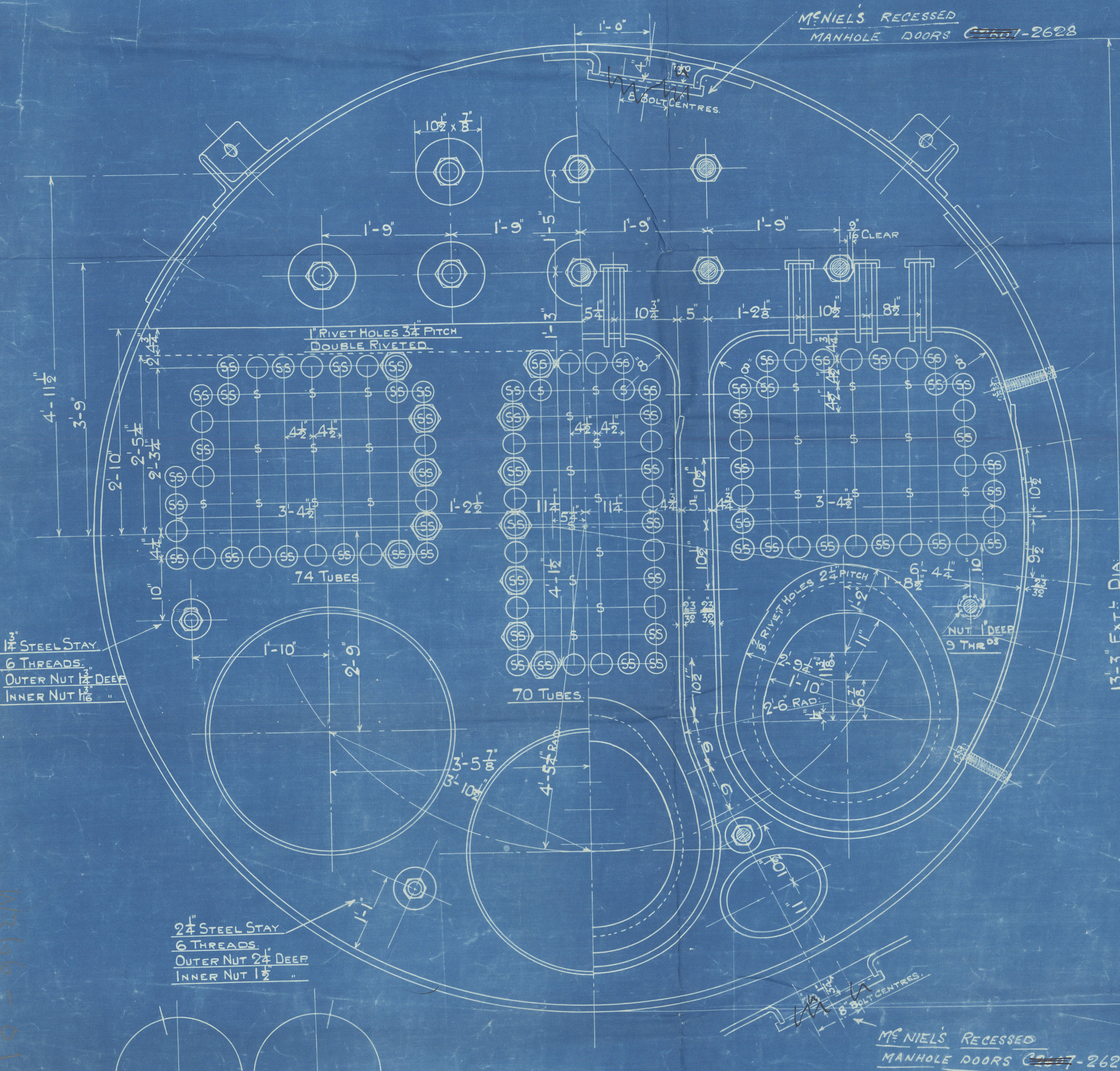


1/2 RIVET HOLES
16 x 12 MANHOLE IN SHELL
COMPENSATING RING 2'-10 1/2 x 2'-6 1/2 x 1 1/2

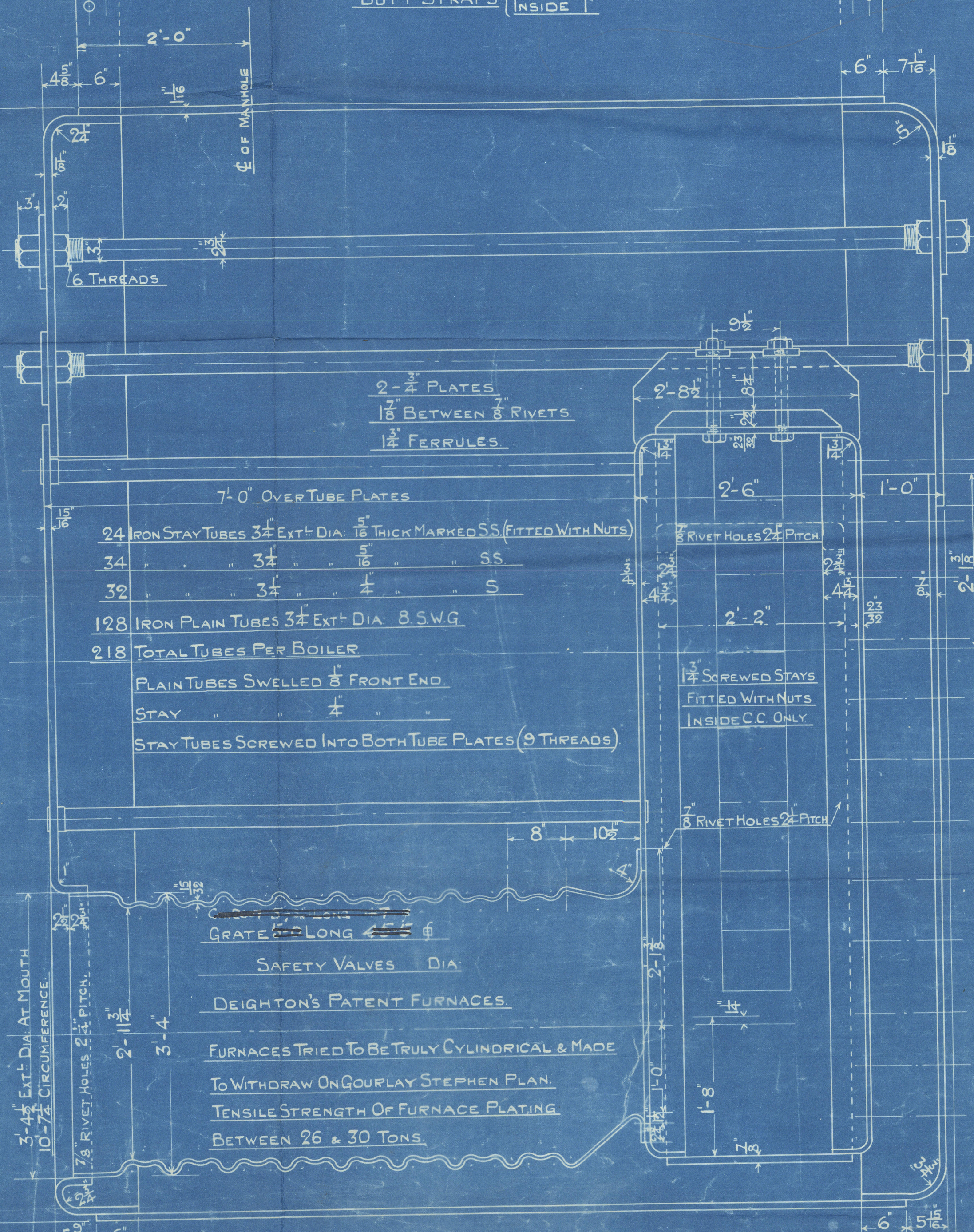


ALTERNATE RIVETS TO BE OMITTED ON THE INNER ROWS OF CIRCUMFERENTIAL SEAMS EXCEPT FOR 1/3RD OF THE CIRCUMFERENCE AT BOTTOM AND IN WAY OF BUTT STRAPS.

12 PITCHES OF 8" = 8'-0"
1/2 PLATE 1 1/2" RIVET HOLES 8" PITCH.
BUTT STRAPS (OUTSIDE 7/8" INSIDE 1")

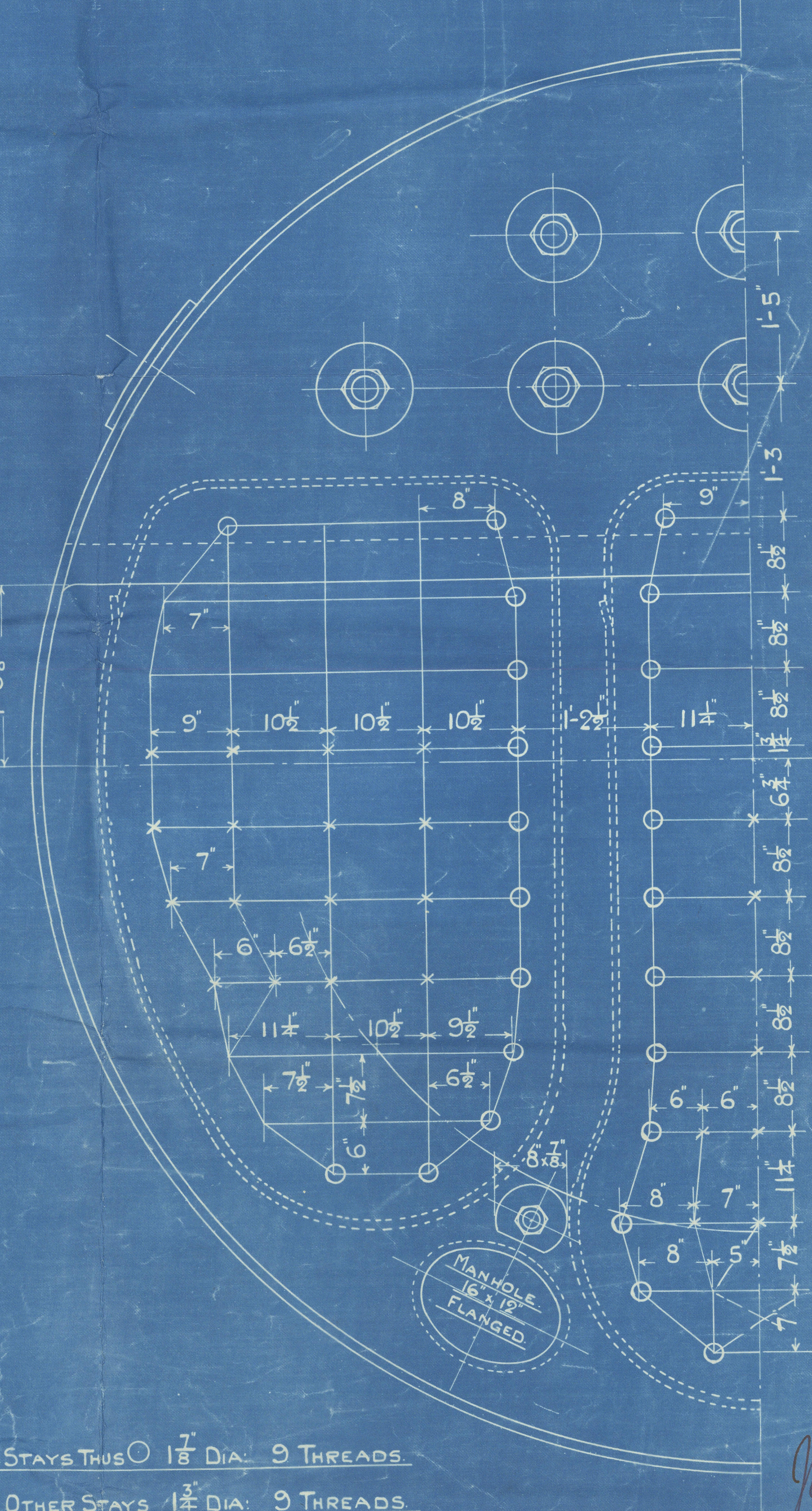


MCNIEL'S RECESSED MANHOLE DOORS C 2627-2628



2-1/2" PLATES
1 1/2" BETWEEN RIVETS
1/2" FERRULES
7'-0" OVER TUBE PLATES
24 IRON STAY TUBES 3/4" EXT. DIA. 1/8" THICK MARKED SS (FITTED WITH NUTS)
34 " 3/4" " 1/8" " SS
32 " 3/4" " 1/8" " S
128 IRON PLAIN TUBES 3/4" EXT. DIA. 8 SWG
218 TOTAL TUBES PER BOILER
PLAIN TUBES SWELLED 1/8" FRONT END.
STAY TUBES SCREWED INTO BOTH TUBE PLATES (9 THREADS)
1 1/2" SCREWED STAYS FITTED WITH NUTS INSIDE C.C. ONLY

GRATE 6" LONG
SAFETY VALVES DIA.
DEIGHTON'S PATENT FURNACES.
FURNACES TRIED TO BE TRULY CYLINDRICAL & MADE TO WITHDRAW ON GOURLAY STEPHEN PLAN.
TENSILE STRENGTH OF FURNACE PLATING BETWEEN 26 & 30 TONS.



STAYS THUS 1 1/8" DIA. 9 THREADS.
OTHER STAYS 1 1/4" DIA. 9 THREADS.
ALL SCREWED STAYS FITTED WITH NUTS BOTH ENDS.
3" NUTS 7/8" DEEP 1 1/8" NUTS 1" DEEP

PRO'S STAY NUT PROTECTORS FITTED INSIDE COMBUSTION CHAMBERS WHERE MARKED THUS X

J.R.B. 29/1/26



TRACING N^o 665 2628
CONTRACT

TWO THUS.
FOR POSITION OF MANHOLES SEE SMALL VIEW

LLOYD'S 29/1/26

RETAIN



© 2019

Lloyd's Register
Foundation

C2628.

NORTH EASTERN MARINE ENGINEERING CO. LD.

MAIN BOILERS.

180 LBS D²

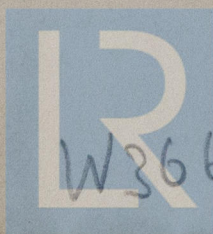
Appd. 30.4.26.

S. S. BRIXTON.

S.S. "BRIXTON"
NEWCASTLE ON TYNE.

Report No. 81578.

RETAIN



© 2019

W366

Lloyd's Register
Foundation