

LIBRARY OF THE
JOHN G. JOHNSON COLLECTION
CITY OF PHILADELPHIA



ON FREE PUBLIC VIEW

9 A.M. UNTIL 6 P.M.

AT THE AMERICAN ART GALLERIES

MADISON SQUARE SOUTH, NEW YORK

FROM SATURDAY, MARCH 31st, UNTIL

THE DATE OF SALE

VALUABLE PAINTINGS

TO BE SOLD AT UNRESTRICTED PUBLIC SALE

FOR ACCOUNT OF

SEVERAL ESTATES AND

PRIVATE OWNERS

ON WEDNESDAY AND THURSDAY EVENINGS


APRIL 4th AND 5th, 1917

IN THE GRAND BALLROOM OF

THE PLAZA

FIFTH AVENUE, 58th TO 59th STREET

BEGINNING PROMPTLY AT 8.15 O'CLOCK



Digitized by the Internet Archive
in 2013

<http://archive.org/details/valuablepainting00amer>

ILLUSTRATED CATALOGUE
OF THE
VALUABLE PAINTINGS

BY PROMINENT ARTISTS OF THE
FRENCH, AMERICAN, ENGLISH AND DUTCH
SCHOOLS

TO BE SOLD
AT UNRESTRICTED PUBLIC SALE

BY DIRECTION OF
L. T. HAGGIN, MARGARET V. HAGGIN, ALLAN McCULLOH
AND H. ESK MOLLER, EXECUTORS OF THE LATE

MR. JAMES B. HAGGIN

THE EXECUTORS OF THE ESTATE OF THE LATE

MR. MATTHEW ADDY
OF MOUNT AUBURN, CINCINNATI

MR. OREN WESTCOTT
OF PROVIDENCE, RHODE ISLAND

AND

MESSRS. WILDER, EWEN & PATTERSON
ATTORNEYS

IN THE GRAND BALLROOM OF
THE PLAZA
ON THE EVENINGS HEREIN STATED

THE SALE WILL BE CONDUCTED BY
MR. THOMAS E. KIRBY
AND HIS ASSISTANT, MR. OTTO BERNET, OF
THE AMERICAN ART ASSOCIATION

MADISON SQUARE SOUTH
NEW YORK

1917



THE AMERICAN ART ASSOCIATION
DESIGNS ITS CATALOGUES AND DIRECTS
ALL DETAILS OF ILLUSTRATION
TEXT AND TYPOGRAPHY

CONDITIONS OF SALE

1. **Any bid** which is merely a nominal or fractional advance may be rejected by the auctioneer, if, in his judgment, such bid would be likely to affect the sale injuriously.

2. **The highest bidder** shall be the buyer, and if any dispute arise between two or more bidders, the auctioneer shall either decide the same or put up for re-sale the lot so in dispute.

3. **Payment** shall be made of all or such part of the purchase money as may be required, and the names and addresses of the purchasers shall be given immediately on the sale of every lot, in default of which the lot so purchased shall be immediately put up again and re-sold.

Payment of that part of the purchase money not made at the time of sale shall be made within ten days thereafter, in default of which the undersigned may either continue to hold the lots at the risk of the purchaser and take such action as may be necessary for the enforcement of the sale, or may at public or private sale, and without other than this notice, re-sell the lots for the benefit of such purchaser, and the deficiency (if any) arising from such re-sale shall be a charge against such purchaser.

4. **Delivery** of any purchase will be made only upon payment of the total amount due for all purchases at the sale.

Deliveries will be made on sales days between the hours of 9 A. M. and 1 P. M., and on other days—except holidays—between the hours of 9 A. M. and 5 P. M.

Delivery of any purchase will be made only at the American Art Galleries, or other place of sale, as the case may be, and only on presenting the bill of purchase.

Delivery may be made, at the discretion of the Association, of any purchase during the session of the sale at which it was sold.

5. **Shipping**, boxing or wrapping of purchases is a business in which the Association is in no wise engaged, and will not be performed by the Association for purchasers. The Association will, however, afford to purchasers every facility for employing at current and reasonable rates carriers and packers; doing so, however, without any assumption of responsibility on its part for the acts and charges of the parties engaged for such service.

6. **Storage** of any purchase shall be at the sole risk of the purchaser. Title passes upon the fall of the auctioneer's hammer, and thereafter, while the Association will exercise due caution in caring for and delivering such purchase, it will not hold itself responsible if such purchase be lost, stolen, damaged or destroyed.

Storage charges will be made upon all purchases not removed within ten days from the date of the sale thereof.

7. **Guarantee** is not made either by the owner or the Association of the correctness of the description, genuineness or authenticity of any lot, and no sale will be set aside on account of any incorrectness, error of cataloguing, or any imperfection not noted. Every lot is on public exhibition one or more days prior to its sale, after which it is sold "as is" and without recourse.

The Association exercises great care to catalogue every lot correctly, and will give consideration to the opinion of any trustworthy expert to the effect that any lot has been incorrectly catalogued, and, in its judgment, may either sell the lot as catalogued or make mention of the opinion of such expert, who thereby would become responsible for such damage as might result were his opinion without proper foundation.

AMERICAN ART ASSOCIATION,
American Art Galleries,
Madison Square South,
New York City.

CATALOGUE



FIRST EVENING'S SALE

WEDNESDAY, APRIL 4, 1917

IN THE GRAND BALLROOM OF
THE PLAZA

BEGINNING PROMPTLY AT 8.15 O'CLOCK

Catalogue Nos. 1 to 75, inclusive

Philibert Léon Couturier

FRENCH: 1823—

1—*CHICKENS*

(Panel)

Height, 6¼ inches; length, 10½ inches

A RED rooster and a white rooster approach each other very slowly, a few short steps apart, with heads erect and beaks open and haughty glaring eye—a brown hen stepping cautiously behind and very close to the white cock.

Signed at the lower right, P. L. COUTURIER.

Property of the Estate of the late MR. JAMES B. HAGGIN.

Joseph Van Severdonck

FLEMISH: CONTEMPORARY

2—SHEEP

(Panel)

Height, 7 inches; length, 9¾ inches

THREE sheep, two lying down and one standing, and a lamb also lying down, are represented on the low bank of a pond in which a duck is swimming, while a shepherd and flock appear in the far distance.

Signed at the lower right, F. VAN SEVERDONCK, ft., 1872.

Property of the Estate of the late MR. JAMES B. HAGGIN.

Joseph Van Severdonck

FLEMISH: CONTEMPORARY

3—CHICKENS

(Panel)

Height, 7 inches; length, 10 inches

A GAME cock and hen, with white and black hens, chicks, pigeons and ducks, are shown on a broad farm-land knoll between a conical haystack and the edge of a pond.

Signed at the lower left, J. VAN SEVERDONCK, ft., 1872.

Property of the Estate of the late MR. JAMES B. HAGGIN.

Georges Michel

FRENCH: 1763—1843

4—LANDSCAPE

Height, 8 inches; length, 11¾ inches

ON an eminence in the right foreground is a wind-mill; a road runs from the right into the middle of the picture and beyond are indicated a strip of water and a stretch of country lying dark under the gray clouded sky.

To be sold to close an Estate.

E. Sanchez-Perrier

SPANISH: 1853—1907

5—ON THE ALCALA, SPAIN

(Panel)

Height, 7 inches; length, 11¾ inches

IN the foreground are the placid waters of the stream reflecting the shrubbery and herbage of a hill-side which traverses the picture. Amid the foliage is a building with white walls and red-tiled roof and rowing along the edge of the stream is a man in a punt. Sky overhead of blue with a few white clouds.

Signed at the lower left, E. SANCHEZ-PERRIER, ALCALA.

The Estate of the late MATTHEW ADDY.

F. Vos

GERMAN :

6—MASTER'S FAITHFUL GUARDIANS

(Panel)

Height, 9½ inches; length, 12 inches

A BROWN hound, lying down on the floor, a black poodle seated behind him, and two white shaggy lap dogs are left in charge of a man's plumed hat and gilt-handled sword, and his gloves, in the corner of a room. All are keenly awake save a sleepy puppy. The white dogs lie on a green drapery over a red sofa.

Signed at the lower left, Vos.

Property of the Estate of the late MR. JAMES B. HAGGIN.

Charles Émile Jacque

FRENCH: 1813—1894

7—POULTRY

(Panel)

Height, 8½ inches; length, 13 inches

THREE hens, with white, black and brown plumage, one seated and two standing on either side of her, in the straw of a stable. Light descends from the left, where there is a ladder leading to the floor above, and a large green jar appears in the background.

Signed at the lower right, CH. JACQUE.

By order of MESSRS. WILDER, EWEN & PATTERSON, Attorneys.

Jean L. A. Théodore Géricault

FRENCH: 1791—1824

8—SADDLE HORSE

Height, 13 inches; width, 9½ inches

A PICTURE of a dark chestnut horse, with black markings, standing by a wall. He is not tied and the bridle has no reins. On his back is a Moorish saddle with high pommel and ornamented back.

To be sold to close an Estate.

William B. Baird

CONTEMPORARY

9—A HORSE DEAL

(Panel)

Height, 10½ inches; length, 13¾ inches

IN a picturesque corner of an old French town an old man and a younger one are dickering over a horse sale, with two fine animals, a sorrel and a black, standing back of them. Two other men stand in a neighboring doorway and more horses are seen in the square beyond.

Signed at the lower right, WILLIAM BAIRD, Paris.

On the back (in French), "Horse Market in Brittany," and "W. B. Baird, rue de l'Abbaye, 12," and in English: "Coming to Terms—Scene in a horse market at Pont Aven, Brittany; Wm. B. Baird, Paris, 1875."

Property of the Estate of the late MR. JAMES B. HAGGIN.

Victor Florence Pollet

FRENCH: 1811—1882

10—*BIRTH OF VENUS*

(Water-Color)

Height, 9¾ inches; length, 12½ inches

THE full-length nude figure of Venus appears in the center of the composition reclining on a conch-shell, buoyed up by the waters of the sea. A multitude of little cupids are depicted flying about her and overhead. The background consists of white clouds with small spaces of blue and in a larger space, which appears in the right upper portion of the composition, a star is gleaming.

Signed at the lower right, V. POLLET.

Purchased from the William Schaus Galleries.

By order of MESSRS. WILDER, EWEN & PATTERSON, Attorneys.

Arthur F. Tait, N.A.

AMERICAN: 1819—1905

11—*DEER*

Height, 10 inches; length, 14 inches

ON the soft grass at the sunny edge of a green wood a yellow doe is seen, standing athwart the view, bending down to lick the head of a spotted fawn which lies on the grass, while a second fawn stands at her side.

Signed at the lower left, A. F. TAIT, N. Y., '74.

Property of the Estate of the late MR. JAMES B. HAGGIN.

Théophile de Bock

DUTCH: 1850—1904

12—*A HOLLAND CHURCH*

Height, 9½ inches; length, 14 inches

A STRETCH of greensward fills the foreground. On the left beyond, amid a group of trees, is a country church with square tower and steep red roofs. On the left a belt of trees; sky of gray and white clouds.

Signed at the lower left.

To be sold to close an Estate.

Émile Lambinet

FRENCH: 1815—1878

13—*ON THE OISE*

Height, 11 inches; length, 15 inches

THE headwaters of the River Oise fill the left foreground, where some ducks are swimming. Across the stream is a stretch of country with farm buildings and masses of trees. Smoke is rising from one of the low-roofed buildings, and overhead is a luminous sky of white clouds with small horizontal spaces of blue.

Signed at the lower left, and dated 1877.

Property of MR. OREN WESTCOTT.

Jules Worms

FRENCH: 1832—

14—*A CUP OF CHOCOLATE*

(Panel)

Height, 15 inches; width, 11¼ inches

WITHIN a well-lighted, gray-walled room with wood furnishings a priest sits reading, with one foot on the broad stand of a brazier. He turns from his book to look at a young woman in brilliant peasant dress, who has brought him a refreshing cup.

Signed at the lower left, J. WORMS.

Property of the Estate of the late MR. JAMES B. HAGGIN.

William H. Beard, N.A.

AMERICAN: 1825—1900

15—*THE INTERRUPTED PICNIC*

Height, 13 inches; length, 16½ inches

A GENEROUS basket luncheon of a picnic party in a tangled green wood is being appropriated by a she bear and two cubs, their surroundings showing evidence of the precipitate flight of the picnickers.

Signed at the lower left, W. H. BEARD, 1872.

Property of the Estate of the late MR. JAMES B. HAGGIN.

Jean L. A. Théodore Géricault

FRENCH: 1791—1824

16—IN THE STABLE

Height, 11½ inches; length, 15½ inches

THREE horses standing at their manger, the center of interest being one whose coat is pale sorrel tinged with gray. On his right, the hindquarters only shown in the picture, is a black horse, and on the left the rump of a bay. In the lower left-hand corner on the straw lies a cavalier's hat with white feather.

Property of MR. OREN WESTCOTT.

Jan Asselyn

DUTCH: 1610—1660

17—GOING TO MARKET

Height, 11 inches; length, 17 inches

AN Italian landscape with a broad roadway in the foreground. On the left a group of trees; on the right high rocks and shrubbery; in the middle distance a stretch of country with a bridge over a river, and in the distance a range of blue mountains; a summer sky of blue with white clouds. In the foreground a peasant is advancing with a pack-train of mules.

Signed at the lower center with monogram.

Property of MR. OREN WESTCOTT.

T. Rosierse

DUTCH:

18—REFRESHMENT AT EVENING

Height, 13 inches; width, 10 inches

A COMELY serving maid, carrying a tray on which are a decanter and glasses, a bottle under her right arm, and holding a lighted candle, is advancing toward the right through an apartment which shows a hall settee with a gentleman's high hat and walking stick. The illumination of this three-quarter-length figure is produced by the light of the candle.

Signed at the lower left, T. ROSIERSE.

The Estate of the late MATTHEW ADDY.

Eugène L. Poitevin

FRENCH: CONTEMPORARY

19—SHORE VIEW

(Millboard)

Height, 13 inches; length, 16 inches

THE foreground shows a steep piece of seashore with the hull of a sailboat resting keel up and the thatched roofs of fishermen's cottages. On the left is a part of a larger vessel, with two or three figures, and a house with white walls and slate roof in the distance; overhead a sky of gray clouds.

Signed with monogram at the lower right.

To be sold to close an Estate.

H. Heckler

CONTEMPORARY

20—VENICE

(Water-Color)

Height, 13¼ inches; length, 18¼ inches

PALACES and other buildings on the left, whose colorful window shades and balconies of greenery tint the pale blue water with their reflections, boatmen on the canal, and on the right mercantile buildings over whose roofs appear the domes of the Salute.

Signed at the lower left, H. HECKLER, '97.

Property of the Estate of the late MR. JAMES B. HAGGIN.

Carlton T. Chapman, N.A.

AMERICAN: 1860—

21—THE INLET

(Water-Color)

Height, 13½ inches; length, 19½ inches

BRILLIANT blue water of an inlet puts in from the right, between a sandy foreground shore with patches of grass and a farther shore lined with low trees. Idle boats are in the stream, and boat houses and other buildings along shore in the middle distance.

Signed at the lower right, CARLTON T. CHAPMAN.

Property of the Estate of the late MR. JAMES B. HAGGIN.

Alonso Perez

SPANISH: CONTEMPORARY

22—*THE TOAST*

(Panel)

Height, 13 $\frac{3}{4}$ inches; length, 19 $\frac{3}{4}$ inches

IN a garden outside a tile-roofed cottage with dormer windows, among slender trees whose green foliage has touches of light yellow, the wedding breakfast has been set, and the company, in brilliant attire, have glasses raised ready for the toast which the young bridegroom has risen to propose.

Signed at the lower right, ALONSO PEREZ.

Property of the Estate of the late MR. JAMES B. HAGGIN.

Frank Meyers Boggs

AMERICAN: 1855—

23—*AT HONFLEUR*

Height, 15 inches; length, 21 $\frac{3}{4}$ inches

IN the harbor basin at Honfleur a cargo steamer with masts and yards is seen near the center of the picture. Her cargo has been unloaded so that she floats high in the water showing the red paint of the lower hull. On the landing at the right side are a few little figures, and on the opposite side of the basin, at the left, another steamer is tied up. Farther away, masts and funnels are indicated where other shipping lies. Black smoke is rising from the funnel of the steamer in the middle of the composition and the sky shows tints of blue and gray.

Signed at the lower left.

To be sold to close an Estate.

John Califano

AMERICAN: CONTEMPORARY

24—SWISS MOUNTAINS

Height, 13¾ inches; length, 21¾ inches

IN the foreground is a humble cottage at the edge of a brook, with a figure standing beside it, at the foot of fresh green slopes that descend in sunshine from the right. Beyond them are mountain shadows, and as ranges of rugged peaks recede in the distance they appear as in a haze, beneath a pale blue sky with numerous clouds.

Signed at the lower right, J. CALIFANO.

Property of the Estate of the late MR. JAMES B. HAGGIN.

Joseph Nicolas Robert-Fleury

FRENCH: 1792—1892

25—PORTRAIT OF M. RUDE

Height, 16 inches; width, 13 inches

A VERY interesting portrait-head of the great French sculptor, François Rude. The face is seen in full view, the head being turned to the spectator over the subject's left shoulder, which is draped with a blouse of white. The light coming from the left strongly illuminates the features and casts dark shadows on the other side of the head.

To be sold to close an Estate.

Eugène de Blaas

BELGIAN: CONTEMPORARY

26—MY SWEETHEART

Height, 16½ inches; width, 14 inches.

THE head of a comely young woman in *profil perdu*, the head turned to the spectator's right. Her dark brown hair is dressed in a heavy coil on the back of her neck and her shoulders are covered by a pale yellow handkerchief figured with roses.

Signed at the right center.

To be sold to close an Estate.

Antonio Tamburini

ITALIAN: 1843—

27—IN THE WINE CELLAR

Height, 15½ inches; length, 20¼ inches

A GRIZZLED monk in brown habit and carrying a scarlet umbrella is seated before a great wine cask, empty glass in hand, in happy and beguiling converse with a blond young woman in blue, who is seated on a bench with cauliflower and carrots beside her. Another huge vat is in the rear and *fiaschi* lie on the floor.

Signed at the upper left, A. TAMBURINI, FIRENZE.

Property of the Estate of the late MR. JAMES B. HAGGIN.

Johannes H. L. De Haas

BELGIAN: 1830—1880

28—*CATTLE*

(Panel)

Height, 14½ inches; length, 20½ inches

A PICTURE of two steers, one black and white, the other dark red, locking horns in play. They are depicted on a grassy eminence overlooking a stretch of country with a sky of gray clouds and some spaces of blue in the upper part.

Signed at the lower right, J. H. L. DE HAAS, and dated 1868.

Purchased from the Artist's Executors.

The Estate of the late MATTHEW ADDY.

Godfried Schalcken

DUTCH: 1643—1706

29—*BACKGAMMON*

(Panel)

Height, 17 inches; width, 13 inches

A GROUP of four figures, three men and a young woman, in a richly furnished interior. The young woman in pink and blue is playing backgammon with a young man with blue coat and breeches and pink waistcoat. The head and shoulders of an older man, who is watching the game, appear between them, and another man in blue, with a cocked hat, looks over the back of the lady's chair.

To be sold to close an Estate.

Alfons Spring

GERMAN: 1843—

30—MUSIC IN THE CLOISTERS

Height, 18 inches; width, 13½ inches

A GROUP of three monks, of whom two robed in white are seated at a table with glasses of wine before them. The third, who is clad in dark brown, is playing on a large old-fashioned lute for the delectation of the other two. The *mise-en-scène* shows a comfortable room with a high oaken cupboard in the corner.

Signed at the lower right, and dated 1876.

To be sold to close an Estate.

William Morris Hunt

AMERICAN: 1824—1879

31—SUNLIGHT AND SHADOW

Height, 18 inches; width, 14 inches

A LANDSCAPE with sunlight playing over the grass and herbage of a gentle slope, and a few trees casting shadows. In the upper half of the canvas the foliage of the trees is relieved against a sky with turbulent white and gray clouds.

Signed at the lower left, W. H.

To be sold to close an Estate.

Antonio Casanova y Estorach

SPANISH: 1847—1896

32—*SUCCULENT OYSTERS*

Height, 18 inches; width, 15 inches

A HEAD and bust picture of a monk, with brown cowl and a white apron tied around his neck, eating oysters from a plate on a table before him. He is about to slip an oyster, which he holds in his right hand, into his open mouth. The other hand is pressed against the napkin.

Signed at the upper left, ANTONIO CASANOVA Y ESTORACH, and dated, PARIS, 1888.

Purchased direct from the Artist.

The Estate of the late MATTHEW ADDY.

Jean Léon Gérôme

FRENCH: 1824—1904

33—*THE DUET*

Height, 17 inches; width, 13½ inches

A TURKISH soldier is depicted sitting on a stone bench playing a lute and singing, while on the floor before him is a tame crow which seems to be joining in the song. The soldier's costume consists of black outer-jacket and hood, purple-pink under-jacket and voluminous white skirts. His legs are wrapped with black puttees and his feet are bare. On the white wall above his head hangs a long Moorish rifle in its case of scarlet cloth.

Signed at the left, on the bench of the seat, J. L. GÉRÔME.

By order of MESSRS. WILDER, EWEN & PATTERSON, Attorneys.

Jaroslav Věšín

POLISH: 1859—

34—SLEIGHING IN RUSSIA

Height, 16½ inches; length, 24 inches

A LUSTY man and a plump young maid are out for a fine ride in an old-fashioned rustic bob sleigh half-filled with straw, drawn by a dark brown team coming at a good clip down a mountain road deep in snow. The man is in brown, the maid in green with brown cloak and red head covering, and both are smiling happily as she clings close. He is keeping taut rein, ready for a swift turn at the edge of a low log bridge, and houses in the background are half buried in snow-drifts.

Signed at the lower right, JAROSLAV VĚŠÍN. MCH.

Property of the Estate of the late Mr. JAMES B. HAGGIN.

Giuseppe Palizzi

ITALIAN: 1812—

35—FOREST INTERIOR

Height, 21¾ inches; width, 18 inches

THE trunks of several trees in the foreground receive a gleam of sunlight coming from the right, which also illumines a little clearing in the middle distance. The bark of a birch tree, with splashes of white, forms the high note of the picture. Beyond the tree trunks, on the other side of the clearing, masses of green foliage are partly illumined by the sunlight and, in the upper half of the canvas, foliage and branches are seen in shadow.

Signed at the lower right.

Property of Mr. OREN WESTCOTT.

Charles Louis Müller

GERMAN: 1815—1892

36—IN THE SALON

Height, 16 inches; length, 26 inches

INTERIOR of a spacious palace hall with pillars of rich marble and richer hangings, with light flooding in from one direction and veiled by stained-glass windows at the farther end. The polished floor of tinted marbles reflects vaguely the brilliant costumes of men and women standing or strolling about.

Signed at the lower left, C. MÜLLER, 1903.

Property of the Estate of the late MR. JAMES B. HAGGIN.

L. Charbonnel

FRENCH: CONTEMPORARY

37—THE CONSULTATION

Height, 22 inches; width, 18 inches

IN the gray-walled office of a writer of letters for the illiterate, a young woman in a blue dress decorated with flowers is seen facing the spectator, thoughtfully describing to the writer at his red-covered table what she wishes him to indite for her.

Signed at left center, L. CHARBONNEL, 1873.

Property of the Estate of the late MR. JAMES B. HAGGIN.



**George Henry Boughton,
N.A., R.A.**

AMERICAN: 1834—1905

38—*PRISCILLA*

(Panel)

Height, 24 inches; width, 16 inches

A CHARMING picture of a young girl wearing a brown dress, light yellow-gray cape and hood of black with white facing, holding a clasped book in her left gloved hand, pressed against her breast, as she walks through the snow toward a village which appears in the middle distance on the shores of the sea.

Signed with initials G. B. at the lower left.

From the Murietta Collection, London.

The Estate of the late MATTHEW ADDY.

Frederik Hendrik Kaemmerer

DUTCH: 1839—1892

39—COMING HOME FROM THE FAIR

Height, 21½ inches; width, 18 inches

A GENTLEMAN in early nineteenth century garb, with green gloves and green umbrella, comes toward the spectator accompanied by a young lady in a gauzy dress of pearl gray and a young girl wearing a white frock and pantalettes and a pink sash. They cling lightly to his either arm, each carrying purchases from a traveling fair whose booths and shows, with numerous figures, extend across the background.

Signed at the lower right, F. H. KAEMMERER.

Property of the Estate of the late MR. JAMES B. HAGGIN.

Jean Léon Gérôme

FRENCH: 1824—1904

40—BASHI-BAZOUK SINGING

Height, 18 inches; length, 26 inches

ON the right of the picture, seated on a masonry oven, is a Bashi-Bazouk with head-dress, skirts and leggings of dark red. His underskirt and shirt of white, and a broad leather belt in which his swords and daggers are stuck, complete the costume. He is depicted playing on a mandolin and singing, while before him on the floor are a hookah and a bird-cage with a crow sitting on the top of it. In the background are his companions, three men, seated on a bench, listening to his lay. In the upper left-hand corner a latticed window.

Signed on the oven at the lower right, J. L. GÉRÔME.

Purchased from Goupil & Co., Paris.

By order of MESSRS. WILDER, EWEN & PATTERSON, Attorneys.

Florent Willems

BELGIAN: 1823—1905

41—"SPEAK!"

(Panel)

Height, 22¼ inches; width, 15½ inches

A SILKEN-HAIRED lapdog "sitting up" on the floor, with fore paws held out, looks up dumbly at a tall, mature woman who stands beside a table, leaning over and looking down at him with a smiling command to bark. She is in a décolleté gown of white satin, and a black velvet jacket trimmed with fur. Fruit is on the table and a still-life painting on the wall.

Signed at the lower right, F. WILLEMS.

Property of the Estate of the late MR. JAMES B. HAGGIN.

Mlle. Rosa Bonheur

FRENCH: 1822—1899

42—KING OF THE JUNGLE

Height, 19 inches; length, 26 inches

A MOST impressive study of a lion, standing and seen in side view with head turned somewhat to the left. The animal is depicted in full color and some harmonizing color is on the canvas around the feet and legs. In the margin of bare canvas surrounding the lion are six drawings, executed with the brush in brown color—three showing heads of a lion and a lioness are on the left; the three on the right show a full figure of a lioness and the hind quarters of two other lions.

Signed at the lower right, ROSA BONHEUR.

*On the back of the stretcher is the seal of the
VENTE ROSA BONHEUR, 1900.*

Purchased from the William Schaus Galleries, New York.

By order of MESSRS. WILDER, EWEN & PATTERSON, Attorneys.



Georges Michel

FRENCH: 1763—1843

43—*LANDSCAPE: NEAR MONTMARTRE*

Height, 20 inches; length, 27 inches

LEVEL lands in the foreground are traversed by a road in the right center where a wayfarer is hobbling along accompanied by his dog. In the middle distance are groups of trees and houses and beyond rises a range of hills, dark under the great black clouds which appear in the sky on the right.

To be sold to close an Estate.

Georges Michel

FRENCH: 1763—1843

44—WOODLAND LANDSCAPE

Height, 20 inches; length, 26¼ inches

A WANDERING, untraveled road through an aged forest enters the view in the right foreground, and passing back along the left loses itself in the distance. To right of it the trees are thick, while to left a single rugged sentinel stands near the foreground, in sunshine which mellows its aged trunk and the rich foliage of the massed trees opposite.

From the David C. Lyall Collection, New York, 1903.

Property of the Estate of the late MR. JAMES B. HAGGIN.

Karl Bodmer

SWISS: 1805—1883

45—IN THE FOREST OF FONTAINEBLEAU

Height, 23½ inches; length, 28½ inches

THE trunks of three great trees in the left foreground and the trunk of another, with wide-spreading branches, on the right. Between them is a forest glade with two other large trees; a ray of sunlight falling from the left illuminating portions of the green foliage. The figure of a peasant woman, with blue blouse and red cap, appears kneeling in the grass at the top of the slope. In the upper part of the picture, through the interstices of branches and foliage, is a summer sky of pale blue and white.

Signed at the lower left.

Property of Mr. OREN WESTCOTT.

William Bradford, A.N.A.

AMERICAN: 1830—1892

46—IN THE ARCTIC REGIONS

Height, 20 inches; length, 30 inches

A BROAD expanse of gently ruffled water fills the foreground and is lost in the distance at the right. In the middle distance high and jagged white icy peaks mount skyward from the water, and sturdy fishing boats with colorful sails are seen about them, the white glare from the ice peaks and the reflected hues of the sails giving the water a warm glow, to which the flanks of great land mountains on the left contribute.

Signed at the lower right, WM. BRADFORD, N. Y.

Property of the Estate of the late Mr. JAMES B. HAGGIN.

Gabriel Cornelius von Max

GERMAN: 1840—

47—YOUNG WOMAN

Height, 32½ inches; width, 22 inches

A HALF-LENGTH picture of a young woman with blond hair and dark eyes, wearing a sumptuous robe of white trimmed with shoulder knots of dull pink ribbon. The head is seen in full face view and the body is turned somewhat to the spectator's right. The right hand appears in the lower right corner of the canvas.

Signed at the lower left.

To be sold to close an Estate.

Léon Bazile Perrault

FRENCH: 1832—

48—AFTER DINNER

Height, 25¼ inches; length, 30 inches

HAVING lingered to the point of drowsiness over nuts and raisins, cake and cheese, a plump and pink checked golden haired little girl has fallen asleep at the table, head resting on her chubby arm. She is in a high backed red chair and wears a frock with puffed shoulder sleeves edged with lace.

Signed at the upper right, L. PERRAULT, '71.

*From the Osborne-Chapin-Thorne Sale, New York, 1893; No. 53.
Property of the Estate of the late MR. JAMES B. HAGGIN.*

Alonso Perez

SPANISH: CONTEMPORARY

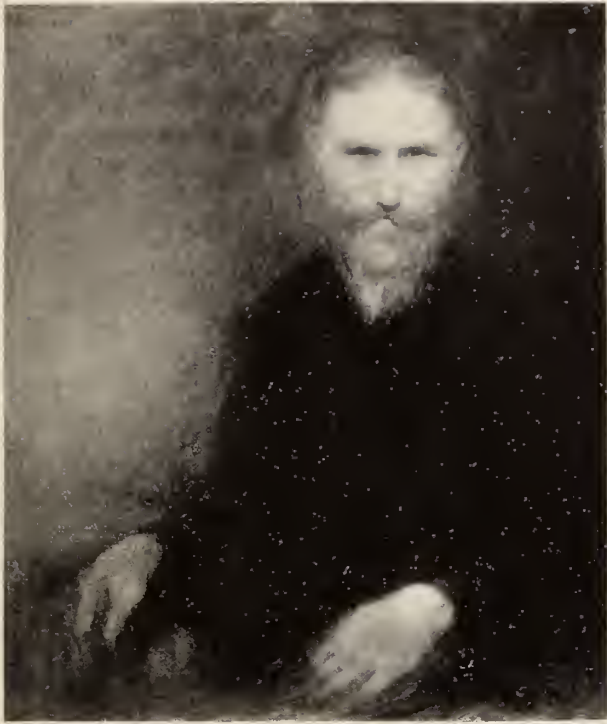
49—THE SURPRISE

Height, 25½ inches; length, 31¾ inches

MERRY and gay are a party of bewigged young gentlemen and brilliantly gowned ladies, in a courtyard, with saddle horses and dogs standing near, and hunting horns worn on sundry shoulders; the object of their merriment being a young gallant and a pretty maid, surprised, straw covered and unrepentant, in a tryst. The surprise is equally great on the part of the company.

Signed at the lower right, ALONSO PEREZ.

Property of the Estate of the late MR. JAMES B. HAGGIN.



Hugh Blaker

BRITISH: CONTEMPORARY

50—*PORTRAIT OF GEORGE BERNARD SHAW*

Height, 30 inches; width, 25½ inches

A HALF-LENGTH portrait of the noted Irish man of letters. The head is placed in the right upper half of the canvas, and the hands are shown as if resting on the arms of a chair at the bottom. The face is painted in light blond tints, as are also the fair hair and beard.

Signed at the upper left.

To be sold to close an Estate.

Paul Wagner

GERMAN: CONTEMPORARY

51—*THE YOUNG GENERAL*

(Panel)

Height, 33 inches; width, 20 inches

A THREE-QUARTER-LENGTH figure of a chubby boy, in full face view to the spectator, wearing a black hat, holding the hilt of a sword in his right hand.

Signed at the upper left, PAUL WAGNER, MÜNCHEN.

The Estate of the late MATTHEW ADDY.

Jules Worms

FRENCH: 1832—

52—*DEPARTURE OF THE BRIDE*

(Panel)

Height, 25 inches; length, 35½ inches

WITHIN a patio where the softly diffused daylight scarcely throws a shadow nine figures appear, among them a man with a guitar throwing a parting kiss toward a young lady seated on a tall mule, while a girl with a tambourine looks on, and the lady's escort on a proud charger looks back haughtily: in the foreground a man is loading fruits into saddlebags, which his mount, a small donkey, stolidly awaits.

Signed at the lower right, J. WORMS.

Property of the Estate of the late MR. JAMES B. HAGGIN.

Rev. W. Gilpin, M. A.

ENGLISH: 1724—1804

53—DERBYSHIRE LANDSCAPE

Height, 24 inches; length, 32 inches

A LANDSCAPE depicting a wide stretch of rolling country diversified by patches of forest, meadows, houses and barns. In the immediate foreground, on the right, are two cows lying down, and on the left a tree reaching up to the top of the canvas spreads its foliage before a summer sky, depicted with warm tints of grayish pink and yellow with pale blue on the right.

Property of MR. OREN WESTCOTT.

Edward Moran, A.N.A.

AMERICAN: 1829—1901

54—MONT ST. MICHEL

Height, 30 inches; width, 25 inches

A VIEW of the famous Mont St. Michel on the Normandy coast of France, at low tide. The foreground and middle distance show the flats extending from the mainland to the Mont with fisher-folk crossing the sands. Mont St. Michel itself appears in the middle distance shrouded in the mists and somewhat dimly illuminated by the light of the setting sun. In the distance, on the left, the horizon line shows the expanse of the ocean dotted with white sails. The sunset sky, with warm-tinted clouds in the lower portion, shows blue with white cirrus clouds at the top.

Signed at the lower left, EDWARD MORAN.

The Estate of the late MATTHEW ADDY.



Eugène Joseph Verboeckhoven

BELGIAN: 1799—1881

55—SHEEP AND LAMBS

Height, 24 inches; length, 32½ inches

Two full-fleeced ewes and two lambs, in a comfortable stable with a window on the left giving a view of landscape. One of the ewes is standing in the middle of the picture and facing the spectator; the other is lying down on the right of her companion, with two lambs nestling near her head. On her left a black hen is picking her way across the straw which lies on the ground and bunches of straw are seen piled up on the right.

Signed at the right, and dated 1858.

The Estate of the late MATTHEW ADDY.



Émile Jean Horace Vernet

FRENCH: 1789—1863

56—*THE THOROUGHBRED*

Height, 25½ inches; length, 32 inches

A PICTURE of a dappled gray horse, in side view, haltered and tied in his box-stall. Over his back is thrown a folded brown blanket. The spirited looking animal holds his head erect and his gaze is fixed upon something he sees on the left and outside of the picture.

Signed with initials H. V. at the lower right.

To be sold to close an Estate.

Félix François Ziem

FRENCH: 1821—1911

57—VENICE

Height, 26 inches; length, 32 inches

A BRILLIANT Venetian scene with boats with yellow and white sails in the right foreground and a gondola scudding along on the left, as it is propelled by the gondolier whose shirt makes a bright note of scarlet. In the middle distance, bordering the blue waters, are the buildings and domes of Venice, with St. Mark's and the Campanile appearing near the middle of the composition. The picture is completed by a high sky of tempered blue.

Signed at the lower left.

Purchased by the late owner direct from the artist.

The Estate of the late MATTHEW ADDY.



Edouard Joseph Stevens

BELGIAN: 1822—1892

58—A YOUNG DOE

Height, 25½ inches; length, 36½ inches

A STRONGLY painted study of a young doe lying down with the left forefoot and both hind feet, doubled under her, appearing on the forward side of the body. The head, at the left, is raised and the ears laid back. The brown and whitish coat, with black markings, is relieved against a background of dull greens.

Signed with monogram at the lower left, and dated 1841.

To be sold to close an Estate.

Attributed to James Baker Pyne

ENGLISH: 1800—1870

59—THE FESTIVAL

Height, 28¾ inches; length, 36½ inches

NEAR the center of the background a group of classical buildings surmounts a broad eminence, the confines vague in a light haze, and crossing the foreground a lively procession in single file moves toward it, the paraders showing much red in their costumes and passing before and around a clump of trees and brush in warm coloring.

Property of the Estate of the late MR. JAMES B. HAGGIN.



Jean Léon Gérôme

FRENCH: 1824—1904

60—WOMEN AT THE BATH

Height, 28 inches; length, 39 inches

THE setting for the picture is the interior of a sumptuous bath in Constantinople. In the foreground appears a part of a circular bathing pool, with the water heating apparatus in the immediate right foreground. Seated on the marble pavement at the edge of the pool, in the left portion of the picture, is a young woman nude, who, with her left hand, is using a flesh brush on her right foot. Back of her, also seated, is another young woman, and on the right of the picture, partly obscured by the smoke and vapor arising from the heating apparatus, are several other women. In the upper portion of the composition are the tiled walls, pillars and arches of the baths.

*Signed at the left on the upper rim of the bathing pool, J. L.
GÉRÔME.*

By order of MESSRS. WILDER, EWEN & PATTERSON, Attorneys.

Adrien Moreau

FRENCH: 1843—1906

61—AT THE FERRY

Height, 29 inches; length, 36¼ inches

Two young peasant girls in quietly brilliant attire have come down to a small landing within the bend of a blue and silvery river, its surface warmed by faint cloud reflections. One stands with milk cans in both hands, while her companion is seated on a provision basket, and a young man who has just rowed up pushes his primitive ferry boat against the reeds, at the edge of the green and flowery bank.

Signed at the lower left, ADRIEN MOREAU.

Property of the Estate of the late MR. JAMES B. HAGGIN.

Paul Delamain

FRENCH: CONTEMPORARY

62—AN ALGERIAN INN

Height, 23½ inches; length, 43½ inches

THE *motif* of the picture is a building with white stucco walls and white dome, which occupies the middle of the composition. The effect is in strong sunlight and the gleam of the white walls is set off by the dark foliage of tropical trees which rise above the roofs of the building and are in relief against a Southern sky of strong blue. Before the door-way of the building, which is seen to be somewhat dilapidated, are the figures of two vendors—the one seated, and the other, a young woman, leaning against the wall—who have two heaps of green melons spread on a rug. On the right of the picture, where there is a horse trough against the walls of the building, a man is watering two Arab steeds.

Signed near the lower left center.

Property of MR. OREN WESTCOTT.

Eugène Joseph Verboeckhoven

BELGIAN: 1799—1881

63—ON THE FARM

(Panel)

Height, 27 inches; length, 40½ inches

LYING on the soft grass at the edge of a duck pond, in the foreground, two lambs nestle against the ewe, and a solemn donkey stands nearby, while more sheep are seen in the fields, and off at the right is a group of thatch-roofed buildings. A brilliant blue sky is banked with gray and gold-tipped rain clouds, the vapor lying low over the distant landscape and the atmosphere charged with moisture.

Signed at the lower right, EUGÈNE VERBOECKHOVEN ft. 1853.

Property of the Estate of the late MR. JAMES B. HAGGIN.

Florent Willems

BELGIAN: 1823—1905

64—THE PROPOSAL

Height, 47 inches; width, 24 inches

WITHIN a palace portico overlooking formal gardens, with flowering vines around the pillars and rich hangings between them, a gallant gentleman presses the waist of a tall and smiling lady to whom he has presented a ring, which she holds up, his pledge of love, confirmed by confident smile. She is in white satin, décolleté, and he in green velvet, slashed, and a rich black cloak; adorning his hat are curling yellow plumes.

Signed at the lower right, FLORENT WILLEMS.

Property of the Estate of the late MR. JAMES B. HAGGIN.

Étienne Bosch

DUTCH: CONTEMPORARY

65—*SANTA MARIA DELLA SALUTE, VENICE*

Height, 30 inches; length, 39½ inches

THE church, with its façades and domes, occupies the central portion of the picture, while passing in the waters before it in the foreground are several gondolas. On the right are other buildings of the town, separated from the church by a narrow street, in which are seen numerous small figures; overhead a mid-day sky of tempered blue.

Signed at the lower right.

To be sold to close an Estate.



Richard Norris Brooke

AMERICAN: 1847—

66—*A HAPPY PICKANINNY*

Height, 45 inches; width, 35 inches

A SEATED, life-sized figure of a negro boy with a bell-metal kettle held between his knees while, with a spoon, he scrapes from the bottom the jam that has been left after his mother has emptied the vessel. On the left of the picture is a wooden cupboard with a blue Delft plate on the shelf, and on the right against the white wall hangs a bunch of ears of seed corn.

Signed at the lower left.

To be sold to close an Estate.

A. A. Anderson

AMERICAN: 1847—

67—*STILL LIFE: GAME*

Height, 30¼ inches; length, 49¾ inches

HANGING against a stone wall and lying on a long narrow table are pheasants, wild ducks, a peacock, small game birds and a hare, with the leg of a deer in view at one end, proofs of sportsmen's marksmanship and freshly brought down. On the ledge of an open, iron-grated window, a black cat looks in with blazing green eyes.

Signed at the lower center, A. A. ANDERSON.

Property of the Estate of the late MR. JAMES B. HAGGIN.

Vincente Palmaroli

ITALIAN: 1835—1896

68—*THE APPROACHING STORM*

(Panel)

Height, 54¼ inches; width, 25 inches

A YOUNG matron and her small daughter, out to enjoy the sea from a broad sandy beach, are driven homeward by a black storm rapidly overtaking them.

Signed at the lower right, V. PALMAROLI.

Property of the Estate of the late MR. JAMES B. HAGGIN.

Charles Louis Müller

GERMAN: 1815—1892

69—*HAPPY PARENTS*

Height, 49½ inches; width, 38¾ inches

STANDING under an apple tree and appearing at three-quarters length are a smiling young mother and father, with their chubby infant, whom the mother supports on a garden seat in front of her, while the father, standing back of her, holds one hand above the baby's head and in the other extends, teasingly, an apple, waiting for the youngster's choice. The child, inclining toward the fruit, seeks the mother's eyes in appeal.

Signed at the lower left, C. L. MÜLLER.

Property of the Estate of the late MR. JAMES B. HAGGIN.

Achille François Oudinot

FRENCH: 1820—

70—BORDERS OF THE RIVER LEPTÉ

Height, 36 inches; length, 51 inches

A LANDSCAPE suggesting the manner of Corot, the composition showing a stretch of placid water in the foreground where near the shore is a punt with two figures, a boy and a girl, and on the right sloping banks with trees in summer foliage and the ruined tower of a castle rising above. A pollard willow grows on the shore in the left foreground and beyond is a bit of the farther shore and a faint indication of a distant line of hills; overhead a sky of blue with white clouds.

Signed at the lower left.

To be sold to close an Estate.



Simon Mathurin Lantara

FRENCH: 1729—1778

71—*YOUTH*

Height, 39½ inches; length, 49 inches

A CLASSICAL landscape with figures. On the left, in the foreground, a young man is passing with a young woman who has set her water-jar on the ground. Near by another young woman is about to dip water from the stream which flows through the foreground, proceeding from a wood and hill on the right of the picture. In the foreground also is another figure, reclining on a rock at the edge of the stream, and some sheep are pasturing under the trees. In the left middle distance is a castle, perched on the hillside, and the buildings of a town appear somewhat farther away below. Beyond is a range of mountains and overhead a sky filled with clouds except for a space of blue at the top of the canvas.

To be sold to close an Estate.



Elizabeth Gardner

(Madame W. A. Bouguereau)

72—MOTHER AND CHILDREN

Height, 48 inches; width, 42 inches

A FULL-LENGTH, seated figure of a comely young French peasant mother, holding her baby boy on her lap and with her little girl standing at her knees, with her hands clasped. The setting for the group is a cottage interior with a window on the left.

Signed at the lower right.

Painted to order for Mr. Addy.

The Estate of the late MATTHEW ADDY.



Hector Leroux

FRENCH: 1829—1900

73—THE ADORATION OF THE GODDESS MINERVA POLLADE BY THE MAIDENS OF ATHENS

Height, 35 inches; length, 54 inches

THE scene depicted is on the Acropolis of Athens at a time when this celebrated hill was bare of those great monuments which were erected later and many of which still exist. Herodotus relates that, when the City of Athens was founded, the people were in doubt what name to choose for it. Neptune and Minerva were both disputing the honor, and the gods decided that the preference should be given to the one who could bestow upon mankind the most valuable gift. Neptune, with a stroke of his trident, presented the war horse, while Minerva created an olive branch, the symbol of peace, and she was awarded the victory.

Signed at the lower left, and dated 1878.

Exhibited in the Salon of the Society of French Artists (known in America as the "Old Salon"), 1878.

Property of Mr. OREN WESTCOTT.

George Loring Brown

AMERICAN: 1814—1889

74—VIEW OF ARTRANI, NEAR AMALFI, GULF OF SALERNO

Height, 34½ inches; length, 60½ inches

A ROAD bordered by a protecting stone wall appears in the left foreground and leads around the side of a hill into the middle of the picture where, on a headland, are numerous buildings standing close together. Buildings also are perched on the hillside at the left. Still farther away, in the right center, is an island with other buildings. In the right foreground and stretching away to the distant horizon lies the sea. Sailboats dot its surface and a fleet of them is seen near the middle of the picture, lying inshore. High above the town rises a range of mountains and beyond is a summer sky of blue with warm-tinted white clouds. A peasant woman and a little boy are seen in the roadway on the left.

Signed at the lower left, and dated 1871.

To be sold to close an Estate.

J. L. Eugène Isabey

FRENCH: 1803—1886

75—ON THE COAST

Height, 59 inches; length, 81 inches

A GRANDIOSE composition, showing an inlet of the sea on the right, and great rocky cliffs on the left, extending up to the top of the picture. In the left foreground a piece of the mast of a sailing vessel with blocks and cordage which has been washed up on the sands; on the right, tossed about by the waves, is the hull of a wrecked galleon. In the middle of the picture, in an open space between the rocks, sunlight shining through from the left illumines the turgid waters. In the upper portion of the canvas, a stormy sky with heavy black clouds.

Property of MR. OREN WESTCOTT.



SECOND AND LAST EVENING'S
SALE

THURSDAY, APRIL 5, 1917

IN THE GRAND BALLROOM OF
THE PLAZA

BEGINNING PROMPTLY AT 8.15 O'CLOCK

Catalogue Nos. 76 to 151, inclusive

Eugen Klimsch

GERMAN: CONTEMPORARY

76—*IN THE GARDEN*

(Water-Color)

Height, 5½ inches; width, 4 inches

IN a formal garden or great park, with aged trees and plentiful shrubbery, a small group of people, including two fond couples, are listening to a young woman playing the lute.

Signed at the lower right, EUGEN KLIMSCH, 1875.

Property of the Estate of the late MR. JAMES B. HAGGIN.

J. G. Meyer von Bremen

GERMAN: 1813—1886

77—MOTHER AND CHILD

(Panel)

Height, 7¼ inches; width, 6⅛ inches

In a dimly lighted cottage room with brown beams and gray walls a young mother is seated, seen in profile to the right, holding on her lap her chubby young son, who wears a white smock. The mother is in dark blue, brown and black, and both are smiling and caressing.

Signed at the upper right, MEYER VON BREMEN.

From the William Schaus Galleries, New York, 1898.

Property of the Estate of the late Mr. JAMES B. HAGGIN.

Charles Émile Jacque

FRENCH: 1813—1894

78—SHEEPFOLD

(Panel)

Height, 4¼ inches; length, 5½ inches

In a faintly shadowed corner of a sheepcote two gray sheep are standing, turned slightly toward the left and with backs to the spectator, feeding at a rack. A soft light slanting in from above glints from glossy surfaces of their fleece, and gives a greenish-golden note to the straw on the floor, where a white hen is pecking.

Signed at the lower left, CH. JACQUE.

From the William Schaus Galleries, New York, 1898.

Property of the Estate of the late Mr. JAMES B. HAGGIN.

Adolf Schreyer

GERMAN: 1828—1899

79—AT THE OASIS

(Panel)

Height, 7 inches: length, 9½ inches

LITTLE figure of an Arab warrior, garbed in green, red, white and brown, on a restless black charger with white feet and yellow and red trappings. More vaguely treated, in the middle distance, are two other horsemen, dismounted, before a background of familiar monumental piles.

Signed at the lower left, AD. SCHREYER.

From the William Schaus Galleries, New York, 1898.

Property of the Estate of the late MR. JAMES B. HAGGIN.

Martin Rico

SPANISH: 1850—1908

80—VENICE GARDEN

(Panel)

Height, 11¾ inches: width, 6½ inches

ALONG the right extends the balconied walk of the garden, looking down over starch-blue water gently rippled, and brightly clad figures are seen on the walk, against a background of rich greenery. Others appear in gondolas at the foot of the wall, and in the distance is seen the top of the Campanile.

Signed at the right, on the wall, RICO.

From the William Schaus Galleries, New York, 1897.

Property of the Estate of the late MR. JAMES B. HAGGIN.



Charles Émile Jacque

FRENCH: 1813—1894

81—INTERIOR WITH SHEEP

(Panel)

Height, 12¾ inches: width, 9½ inches

A HALF dozen or more sheep, with three lambs, are here depicted in their fold. A ladder on the right leads up to a hay-loft, and a woman is seen in the farther part of the stable busy mixing feed.

Signed at the lower right, CH. JACQUE.

By order of MESSRS. WILDER, EWEN & PATTERSON, Attorneys.



Jean Jacques Henner

FRENCH: 1829—1905

82—ANDROMEDA CHAINED TO THE ROCK

Height, 13½ inches; width, 7¾ inches

A FULL-LENGTH nude figure of Andromeda, in side view, facing to the left. Her hands are shackled to the tall dark rock which forms a background to the brilliantly illuminated figure. Her auburn hair streams outward from her back on the right as it is blown by the wind, and the picture is completed by a stretch of the blue sea, on the right, with a tender blue sky above.

Signed at the lower left, J. J. HENNER.

Purchased from Messrs. R. & M. Vose, Boston.

By order of MESSRS. WILDER, EWEN & PATTERSON, Attorneys.

Martin Rico

SPANISH: 1850—1908

83—ALONG THE RIVER

(Water-Color)

Height, 7½ inches; length, 15¼ inches

A BROAD and placid river whose surface is a pearly gray in a light haze winds about a low, grassy point, on which ducks are wandering, one of which a girl has captured. In the distance a city.

Signed at the lower left, Rico.

From the William Schaus Galleries, New York, 1897.

Property of the Estate of the late MR. JAMES B. HAGGIN.

N. V. Diaz de la Peña

FRENCH: 1807—1876

84—IN THE FOREST

(Panel)

Height, 6¾ inches; length, 10 inches

IN the central portion of the composition is a clearing in the forest, presumably that of Fontainebleau, with a pathway leading through the herbage and boulders between the trees, which appear on either side.

Signed at the lower right with the seal VENTE DIAZ.

Sold at the sale of the artist's effects in Paris.

The Estate of the late MATTHEW ADDY.

Charles François Daubigny

FRENCH: 1817—1878

85—1 VILLAGE STREET

(Panel)

Height, 9½ inches; length, 13¾ inches

From the foreground a lane winds through a little French village, with a country cemetery on the left and some houses over-shadowed by the foliage of a great tree. A peasant woman is walking in the roadway. An evening sky with tints of blue in the upper portion shows yellow and pink, qualified with gray, at the horizon.

Signed at the lower right.

To be sold to close an Estate.

Léon Bazile Perrault

FRENCH: 1832—

86—TÊTE DE JEUNE FEMME

(Panel)

Height, 12¼ inches; width, 9 inches

HEAD and shoulders portrait of a young woman, figure to the left and face turned three-quarters front, her hazel eyes looking directly at the observer quietly, with a smile ready on full pink lips. She is in white and blue, with a white scarf over her yellowish-chestnut hair, and is seen against a dark mahogany background.

Signed at the upper left, L. PERRAULT.

Property of the Estate of the late MR. JAMES B. HAGGIN.



Jules Adolphe Grison

FRENCH: 1845—

87—*RÉDACTION D'UN PAMPHLET*

(Panel)

Height, 12¾ inches; width, 10½ inches

THREE men are assembled at a table in the corner of a room, before a well stocked sideboard which has already contributed liquid cheer to the table. They are in richly colored and embroidered coats and white stockings, and are intent in the study and consideration of a brochure which one with his back to the spectator is preparing, his pen at his side.

Signed at the lower left, GRISON.

From the Salon of 1892.

Property of the Estate of the late Mr. JAMES B. HAGGIN.

Attributed to David Teniers

88—DUTCH HOMELY LIFE

(Panel)

Height, 9½ inches; length, 13½ inches

AN old peasant woman in a blue waist, with white kerchief about her head and white neckerchief, is seated on a low bench in a court corner peeling apples. A parrot sits on a perch above her head, and chickens are feeding near a pig sty, beyond which a young man in a green blouse appears, pushing open a stable door.

Property of the Estate of the late MR. JAMES B. HAGGIN.

P. L. N. Grolleron

FRENCH: 1848—1901

89—FRENCH GUARD

(Panel)

Height, 13 inches; width, 9¼ inches

A FRENCH infantryman in uniform is seated on an overturned tub, in a barracks yard, cleaning his gun, in weary attitude.

Signed at the lower left, P. GROLLERON.

Property of the Estate of the late MR. JAMES B. HAGGIN.



Antoine Vollon

FRENCH: 1833—1900

90—A FRENCH VILLAGE

Height, 9 inches; length, 15 inches

A FISHING village, the houses having gray and white walls and reddish-brown roofs, occupies the center of the picture. From the village the ground slopes toward the foreground where there is a piece of water reflecting the blue and white of the sky.

Signed at the lower right.

Property of Mr. OREN WESTCOTT.



Charles François Daubigny

FRENCH: 1817—1878

91—*FRENCH TUG-BOAT*

(Panel)

Height, 8¼ inches; length, 18 inches

A TUG-BOAT is seen in the middle of the picture, ploughing through the waters and drawing after it a boat, the bow of which appears at the bottom of the picture. An engineer, with blue blouse and cap, is seen standing on the boat and from its funnel, as well as from another funnel farther away on the left, black smoke drifts across the sky. In the distance a strip of shore shows tints of dark, dull green, contrasting effectively with the general gray tone of the picture. A strip of red paint on the tug-boat gives an accenting note of value.

Signed at the lower left, VENTE DAUBIGNY.

To be sold to close an Estate.

Mlle. Rosa Bonheur

FRENCH: 1822—1899

92—SHEEP

(Panel)

Height, 13½ inches; length, 14 inches

Portrait of a fine large sheep, standing across the picture, facing to the right and slightly forward. It is within a gray sheepcote and stands on a light strewing of golden straw, near a brown feed or water tub, with a soft light slanting across its rich yellowish-gray wool.

Signed at the lower left, ROSA BONHEUR.

On the back, the official seal: VENTE ROSA BONHEUR, 1900.

Property of the Estate of the late Mr. JAMES B. HAGGIN.

Jan Miense Molenaer

DUTCH: 1610—1668

93—THE TAVERN

(Panel)

Height, 13 inches; length, 14¾ inches

In a sombre interior with timber posts supporting the roof and a large hooded fireplace on the right, a party of Dutch peasants are gathered about an improvised table, consisting of a plank supported on tubs, engaged in a game with cards and dice. On the floor at the right lies a black and white dog. Other figures are seen gathered about the fire-place, and behind the group of gamblers.

To be sold to close an Estate.

Jean L. A. Théodore Géricault

FRENCH: 1791—1824

94—A HORSE

Height, 13 inches; length, 16 inches

A WHITE horse in side view with his head in his manger. In the lower right hand corner on the floor of the stable are some accoutrements. In the sombre light, the coat of the horse appears gray, except where a beam of light illumines the upper part of his tail.

To be sold to close an Estate.

Jehan Georges Vibert

FRENCH: 1840—1902

95—A BEAUTY OF SPAIN

(Panel)

Height, 16 inches; width, 12 inches

IN the corner of a patio a Titian-haired Spanish lady of generous proportions is seated beside a table on which rests a large bouquet of rich red roses, on a rug of warmer red striped with blue and gray-white. Other reds, including cardinal tones and a pale pink, stand out in her lively attire, and she leans back, smiling, with elbow resting on the back of her chair.

Signed at the lower right, J. G. VIBERT.

Property of the Estate of the late Mr. JAMES B. HAGGIN.



Alfons Spring

GERMAN: 1843—

96—MOTHER'S HELPERS

Height, 13½ inches; length, 16 inches

IN a humble cottage interior, with a rude fireplace and oven, built of stone and mortar, an elderly woman is seated, on the left, preparing vegetables for the family soup. Nearby, on the right of the picture, a little girl and a little boy, who are both barefooted, have brought some kindling wood and are tending the fire.

Property of MR. OREN WESTCOTT.

F. V. Eugène Delacroix

FRENCH: 1798—1863

97—CAESAR VIEWING THE BODY OF POMPEY

Height, 14 inches; length, 16 inches

CAESAR is depicted standing near the middle of the composition looking down upon the body of Pompey, which is supported by a man seated on the ground. The setting for the figures is on the seashore with the wreckage of a vessel beyond the group of figures, and a dramatic sky which shows, with the blue, tints of glowing pink on the left.

Signed at the lower right, E. D.

Property of Mr. OREN WESTCOTT.

John Califano

AMERICAN: CONTEMPORARY

98—CARING FOR THE FLOCK

(Panel)

Height, 17¾ inches; width, 12½ inches

SUNSHINE brightens the creamy gray walls of a stable and sheepcote, and illumines patches of cloud vapor floating in a light blue sky seen over a corner of the heavily thatched roof. On the green grass in an angle of the yard a flock of gray sheep and lambs are gathered, and a peasant woman is giving them attention, at a low doorway.

Signed at the lower right, J. CALIFANO.

Property of the Estate of the late Mr. JAMES B. HAGGIN.

Alexandre Gabriel Decamps

FRENCH: 1803—1860

99—*THE BAY OF ALGIERS*

Height, 13½ inches; length, 19¾ inches

IN the foreground is a circular natural sea-basin with some sailboats and figures, the entrance to the basin appearing in the left middle distance; beyond it lies the expanse of the sea. Rocky cliffs appear on the left of the picture and beyond is an island with some buildings. A few sails dot the waters, and the sky shows strong yellow tints in the lower portion with blue and a horizontal white cloud above.

To be sold to close an Estate.

Madame Peyrol (Juliette Bonheur)

FRENCH: 1830—

100—*SHEEP IN THE HIGHLANDS*

Height, 14½ inches; length, 17½ inches

SHAGGY-HAIRED sheep, brown sheep and sheep yellow-gray, are lying on the moist green grass of a steeply sloping hillside in the highland country, their shepherd also lazily lolling on the turf near a ledge of rock. Rock outcroppings spot the green with brown and gray, and a bluish mist or haze veils the valleys and lower crests of the distance.

Signed at the lower right, PEYROL.

Property of the Estate of the late MR. JAMES B. HAGGIN.



J. Francis Murphy, N.A.

AMERICAN: 1853—

101—*SUMMER SUNSHINE*

Height, 14 inches: length, 20 inches

THE foliage of a willow overhangs a little brook on the right of the picture and casts shadows on the grass; on the left a field and garden; in the middle distance a house, its roof brightly shining in the sun and the chimney casting a strong shadow, and a clump of thickly foliaged trees. In the upper part of the canvas, on the left and on the right, are the tints of a summer sky.

Signed at the lower left.

To be sold to close an Estate.

D. Caliga

CONTEMPORARY

102—IN THE LOUVRE

(Water-Color)

Height, 14½ inches; length, 18½ inches

AN end and portions of the side walls of a gallery of the Louvre are shown, with a French artist dressed in black and wearing a silk hat copying one of the pictures in a corner, and two ladies in green and blue standing in the opposite corner.

Signed at the lower right, DIO CALIGA, 1875.

Property of the Estate of the late MR. JAMES B. HAGGIN.

F. V. Eugène Delacroix

FRENCH: 1798—1863

103—HEAD OF A CHILD

Height, 18 inches; length, 15 inches

A FULL-FACE life-size bust portrait of a child with black hair and black eyes, wearing a head-dress of red and black, and yellow-brown drapery about the neck. The background shows a landscape composition with tints of crimson at the horizon and a dark sombre mass above.

Signed at the lower left.

To be sold to close an Estate.

Frank Meyers Boggs

AMERICAN: 1855—

104—*ST. VAAST-LA-HOAGE*

Height, 15 inches; length, 22 inches

A SEA-SHORE view with the Normandy highlands in the foreground overlooking the ocean. On the left is a schooner lying high and dry and keeled over to the right, with a dory beside it. In the right center, in relief against the gray sky, are buildings and sheds. The color scheme is cast entirely in grays with a note of red near the middle of the picture.

Signed at the lower left, and dated '82.

To be sold to close an Estate.

Attributed to Jacob Van Ruisdael

DUTCH: 1628?—1682

105—*WOODLAND STREAM*

Height, 16½ inches; length, 20 inches

Low trees with scraggly branches partly bare stand on a bank at the left, the ground beneath them flooded with sunlight, through a brief clearing beyond, while much of their foliage and the greater part of the picture are shadowed. In the foreground a brook tumbles down the bank, broadening into a placid stream along which a shepherd is driving some sheep.

Property of the Estate of the late MR. JAMES B. HAGGIN.



Johan Barthold Jongkind

DUTCH: 1822—1891

106—*MOONLIGHT: ROTTERDAM*

Height, 15 inches; length, 18½ inches

THE waters of a canal fill the foreground, illumined by the rising moon. The banks, with trees, buildings and towers appear on either side, and boats with bare masts are seen near the quays. The sky shows tints of blue, gray and pink, with clouds of darkish brown.

Signed at the lower left, and dated 1870.

Property of MR. OREN WESTCOTT.

Louis Gabriel Eugène Isabey

FRENCH: 1803—1886

107—*BIRTH OF LOUIS TREIZE, AT FONTAINEBLEAU PALACE, ON THE 27TH OF SEPTEMBER, 1601*

Height, 21¾ inches; width, 18 inches

A HISTORICAL composition in the style of Rubens. Sitting in a regal arm-chair, the Queen, with head turned to the right, Marie de Médicis, wife of Henri Quatre, regards her new-born son, who is being placed by Justice in the arms of the genius of Health, a nude male figure with blue drapery about the loins and his emblem, a serpent coiled around his left arm. Behind the Queen stands Fortune. On the left of the composition, Fecundity presents the Queen emblematically with the other five children who shall spring from her as from a basket of flowers. Back of this group is an angel with blue wings, drawing aside a large piece of red drapery. In the sky, at the upper left, Apollo is seen driving the chariot of the sun.

To be sold to close an Estate.

Jean Léon Gérôme

FRENCH: 1824—1904

108—A JOURNEY THROUGH ALGERIA

(Panel)

Height, 16½ inches; length, 24¾ inches

CROSSING the view in the middle distance is a three-arched bridge over a stream, and on it a long line of camels and people afoot, the head of the line having already turned to come forward down an inclined path along an arm of the stream which puts into the foreground. Tramping majestically through the shallow water of this arm a second procession of camels comes forward, its leaders now turning toward the left. Along the left bank of the stream and across the background are lines of palmettos and dense shrubbery, with bushes in blossom near a white building a corner of which appears in the left foreground.

Signed at the lower left, J. L. GÉRÔME.

Property of the Estate of the late MR. JAMES B. HAGGIN.



Alexandre Gabriel Decamps

FRENCH: 1803—1860

109—*LANDSCAPE AND FIGURES*

Height, 14¾ inches; length, 24½ inches

RESTING, close together, on grass-grown boulders on a stretch of lowland between mountains and the sea are a handsome, pensive young woman in a warm buff dress, and a young peasant in a rose tunic, who holds a pipe and is in serious thought. They occupy the center of the foreground with a dog curled up at the maid's feet and a water jug and baskets lying around. In the distance on the right is the blue sea and on the left a range of blue mountains, and figures are to be seen at the water's edge and on the slopes.

Signed at the lower right, DECAMPS.

*At extreme lower right, the stamp:
VENTE DECAMPS.*

Property of the Estate of the late MR. JAMES B. HAGGIN.

Charles Louis Müller

GERMAN: 1815—1892

110—*THE PALACE STUDIO*

Height, 16 inches; length, 26 inches

IN a palace hall with marbled walls, gilt sconces and paintings of woodland nymphs, an uncompleted painting of another nymph is unveiled on an easel, and in a corner three bewigged gentlemen, one serious and the others with wise smiles, confer, elbow to elbow.

Signed at the lower left, C. MÜLLER.

Property of the Estate of the late MR. JAMES B. HAGGIN.

François Louis Français

FRENCH: 1814—1897

111—*A MOUNTAIN STREAM*

Height, 21¾ inches; width, 18 inches

A BROOK emerges from a thicket of trees and brush at the foot of a steep slope, and forms a clear shallow pool, reflecting the cool colors of the woodland. On a boulder in the pool a barelegged boy stands fishing, and on a natural bridge above him a man and another boy with a fish-pole are seen looking down.

Signed at the lower right, FRANÇAIS, 1886.

Property of the Estate of the late MR. JAMES B. HAGGIN.

Émile Van Marcke

FRENCH: 1827—1890

112—*COWS DRINKING*

Height, 17¼ inches; length, 22¼ inches

LUSH and deep the grasses of a meadow, bounded afar by hills on the right and nearer at hand by lines of trees toward the left, and wandering cattle grazing among them in sunshine or in the shadows. In a pool in the foreground a white cow stands in the sunlight, and a black cow with a white face, her head lowered to the water, stands in shadow, both looking toward the spectator in a pause in their drinking.

Signed at the lower left, EM. VAN MARCKE.

Property of the Estate of the late MR. JAMES B. HAGGIN.

Constant Troyon

FRENCH: 1810—1865

113—*STUDY OF A WHITE COW*

Height, 19¾ inches; length, 27½ inches

A FINE white cow with a red ear and black-tipped horns walks sedately across the foreground, toward the right, over green herbage tufted with brown, followed by a blue-bloused young man carrying a stick. Both eye the onlooker. Sunshine glosses the white coat, on shoulder and back, and the flank exhibits subtle and interesting shadows. In a middleground stream a woman is washing linen, and the landscape of the distance is low, with some trees.

At the lower left, the stamp: VENITE TROYON.

Property of the Estate of the late MR. JAMES B. HAGGIN.

William Bradford, A.N.A.

AMERICAN: 1830—1892

114—*FISHING FLEET AMONG THE ICEBERGS*

Height, 18 inches; length, 30 inches

WHITE and cold green mountains of ice rise from rippling waters, and before them fishing boats with dull-colored sails ride closely grouped. In the foreground on the right fishermen are hauling a net, off a low point of land, and in the middle distance lies a brigantine with white sails, and men aboard, near to one of the bergs.

Property of the Estate of the late MR. JAMES B. HAGGIN.



Émile Van Marcke

FRENCH: 1827—1890

115—*SHEPHERD AND FLOCK*

Height, 18 inches; length, 28 inches

IN the level foreground pastures, standing in the sunlight, is a shepherd in blue with his cloak on his arm and accompanied by his two dogs. Farther away his flock is grazing and in the distance is a belt of trees, traversing the canvas, and a range of hills. A gray sky tempered with blue completes the picture.

Signed at the lower left, EM. VAN MARCKE.

By order of MESSRS. WILDER, EWEN & PATTERSON, Attorneys.



Frank Meyers Boggs

AMERICAN: 1855—

116—*AFTER THE RAIN*

Height, 26 inches; width, 20 inches

A STRIKING picture of a French provincial town, showing a street passing over a bridge of a canal in the foreground and leading into the middle of the composition, where there is a mediæval church with a tall tower and spire. Other buildings line the street and on the right, in the canal, is moored a fishing boat. A market-cart and numerous pedestrians, some of them carrying umbrellas, are seen in the street, the pavement of which reflects the buildings and sky on its wet surface after the rain.

Signed at the lower left.

Property of MR. OREN WESTCOTT.



Franz von Lenbach

GERMAN: 1836—1904

117—A LADY OF QUALITY

(Pastel—Oval)

Height, 24½ inches; width, 21½ inches

A HEAD and bust picture of a young woman with dark hair and eyes, in nearly full face view, the head turned slightly to the spectator's left. A collar of pearls is indicated around her neck and the shoulders are covered by cloud-like white drapery.

Signed at the lower right, and dated 1898.

To be sold to close an Estate.



Jules Duprè

FRENCH: 1812—1889

118—*THE COMING STORM*

Height, 22 $\frac{3}{4}$ inches: length, 28 $\frac{3}{4}$ inches

A RICHLY toned landscape with a group of great oaks in the central part of the composition and a cottage partly hidden by the foliage. A gleam of sunlight strikes the walls and illumines a little space of the ground in front of the cottage. The foreground, with a marshy pool on the right, is in deep shadow. The sky, with spaces of strong blue and clouds accented with bright bits of color which receive the sunlight, forms an effective foil for the warm rich tints of the foliage of the great trees.

Signed at the lower right.

To be sold to close an Estate.



Jean Léon Gérôme

FRENCH: 1824—1904

119—*SALE OF A CIRCASSIAN SLAVE*

Height, 25½ inches; width, 22 inches

A FULL-LENGTH nude figure of a young woman appears as the central feature of this composition. On the left is the auctioneer in robes of red and white who, from his tribune, with his left hand extended, seems to be praising the beauty of the young female slave as he addresses the crowd in the background. Some of these are holding up their hands as they bid.

Signed on the tribune at the left, J. L. GÉRÔME.

Purchased from Boussod, Valadon & Co., Paris.

By order of MESSRS. WILDER, EWEN & PATTERSON, Attorneys.

N. V. Diaz de la Peña

FRENCH: 1807—1876

120—CUPIDS' FESTIVAL

Height, 23¼ inches; length, 29 inches

A SYLVAN idyl in which five nymphs of the woodland appear, surrounded by twice as many playful and whispering cupids, in a secluded open place in a rich forest, with a pool in the foreground and wild flowers growing in the grass. The young women are half nude, with rich garments over the lower body, three reclining, one standing, and one seated with back to the observer, and they have generous masses of golden, red and mahogany hair. Red notes tinge the green foliage, and through the umbrageous vistas creamy white clouds appear floating in a green-blue sky.

Signed at the lower left, N. DIAZ, '70.

At the lower left, the stamp: VENTE DIAZ.

From the David C. Lyall Collection, New York, 1903; No. 74.

Property of the Estate of the late MR. JAMES B. HAGGIN.



Jehan Georges Vibert

FRENCH: 1840—1902

121—MONSIGNOR HAVING REFRESHMENTS

Height, 22½ inches; length, 29¼ inches

AFFABLE and rotund, the favored of the Church and the ladies is seated comfortably below the corner of a marble mantel, facing front, and holds up in one hand his cup for some sugar from his hostess in pink, while a visitor in dark blue velvet and plumaged hat rises to offer him at the same time a dish of sweetmeats.

Signed at the lower left, J. G. VIBERT.

Property of the Estate of the late MR. JAMES B. HAGGIN.



Adolf Schreyer

GERMAN: 1828—1899

122—ARABIAN HORSEMEN

Height, 21¾ inches; length, 32¾ inches

EMERGING from a hazy background on the left a turbaned cavalcade on prancing steeds wheels across the foreground and turns back toward a massive and low-domed architectural pile standing on a broad hillside in the middle distance on the right, beneath palm trees. An advance guard already has arrived below the walls.

Signed at the lower right, AD. SCHREYER.

Property of the Estate of the late MR. JAMES B. HAGGIN.





Jean Leon Gerôme

FRENCH: 1824—1904

123—DEPARTURE FROM THE MOSQUE

Height, 21½ inches; length, 31 inches

A LONG procession of Sheiks and common citizens are descending the stone staircase in the middle of the composition, which leads from the arched doorways of a Mosque into a courtyard in the foreground. The foremost figure is a young man in blue and the next is an elderly man who seems to be blind, as he taps with his staff on the pavement and rests his left hand on the head of a child who serves as his guide. Other figures, in vari-colored costumes, are descending the steps and advancing from the interior of the building.

*Signed on the mounting-block at the foot of the stairway,
near middle of picture, J. L. GÉRÔME.*

By order of MESSRS. WILDER, EWEN & PATTERSON, Attorneys.

Georges Michel

FRENCH: 1763—1843

124—DUTCH LANDSCAPE

Height, 21½ inches; length, 28¾ inches

HIGH and rolling pasture land along the bank of a broad river lies in transparent cloud shadow in the foreground, while flat fields dotted with occasional buildings stretch far away in a soft hazy light beyond the stream. On a foreground knoll a cow is lying down, another stands beyond her, and dogs drawing a cart laden with milk cans are resting on a level patch of the ground.

*From the William H. Fuller Sale, New York, 1898; No. 3.
Property of the Estate of the late MR. JAMES B. HAGGIN.*

Early English School

(Style of Thomas Gainsborough, R.A.)

ENGLISH: 1727—1788

125—LANDSCAPE

Height, 24¾ inches; length, 31¼ inches

THE canvas pictures a retired spot, of rough and broken ground, in a partly open space near the edge of a thick forest. Warm light from a sunset sky enters through a screen of younger trees, and throws into relief blasted trunks and a group of figures beyond a knoll.

Property of the Estate of the late MR. JAMES B. HAGGIN.



Frank Meyers Boggs

AMERICAN: 1855—

126—HONFLEUR

Height, 23½ inches; length, 32 inches

A VIEW of the entrance to the port of Honfleur with the town occupying the middle distance lying beyond. In the foreground the waters of the sea, at low tide, occupy the right of the picture and stretch away between the sands and the walls of the harbor. On the left, the white tower of a harbor light is relieved against the distant view of part of the town, lying blue-gray under a sky filled with clouds, except for some spaces of blue.

Signed at the lower left, and dated '87.

To be sold to close an Estate.



Joseph Melin

FRENCH: CONTEMPORARY

127—HUNTSMAN AND HOUNDS

Height, 26 inches; length, 36½ inches

A HUNTSMAN, with red coat and waistcoat, black breeches and black velvet cap and white leggins, with a *cor-de-chasse* over his shoulder and around his body, advances in the foreground of the picture with his whip held in his right hand, raised high in the air, as he leads an eager pack of some twenty-five foxhounds who crowd around him and follow on. The landscape setting shows a country roadway leading through a gap in the hills which are crowned with clumps of trees in relief against a misty morning sky of gray.

Signed at the lower left.

To be sold to close an Estate.

Adolf Schreyer

GERMAN: 1828—1899

128—ARAB CAVALIERS

Height, 26 inches; length, 32 inches

Two Arab tribesmen, one mounted on a gray steed and the other on a chestnut roan, are crossing a shallow stream in the foreground. In the middle distance lies a wide stretch of North African country with a sky showing gray clouds and at the horizon tints of pink and yellow where the sun has set.

Signed at the lower left.

The Estate of the late MATTHEW ADDY.



Thomas Gainsborough, R.A.

ENGLISH: 1727—1788

129—*THE EDGE OF THE COMMON*

Height, 25 inches; length, 30 inches

A PATH through a common of great diversity of surface winds across the middle distance, back of a central hillock which slopes roughly to the foreground and in front of a dense forest. Another dense growth of trees edges into the picture on the right near the foreground, and between these two woods the light from a clouded but still luminous sky falls upon the hillock, is reflected into the nearer shadows, and brings into effective relief the figures of idle men and an anciently felled tree trunk on the slope, and a farmer and pack-horses following the winding path. A landscape rich and warm in color, charming in the light distribution and in the fine complexity of composition.

“A fine example of the rather rare landscape-art of Thomas Gainsborough.”—*Morning Post*, London, November 10, 1890.

*From the William H. Fuller Collection, New York, 1898; No. 15.
Property of the Estate of the late Mr. JAMES B. HAGGIN.*

**School of Sir Thomas Lawrence,
P.R.A.**

ENGLISH: 1769—1830

130—*DUKE OF WELLINGTON*

Height, 30 inches; width, 25 inches

HALF-LENGTH portrait of the great Duke, against a dark neutral background of deep olive note. With figure very slightly turned to his left he is facing almost full to the front, his glance slightly downward. He wears a blue coat, and a dark olive greatcoat with green-blue lining, both thrown slightly open, as is his white waistcoat, and he wears a white stock, below which the red ribbon of an order appears.

Property of the Estate of the late MR. JAMES B. HAGGIN.

**Attributed to
Meindert Hobbema**

DUTCH: 1638—1709

131—*WOODLAND LANDSCAPE*

Height, 26 inches; length, 30 $\frac{3}{4}$ inches

AN old gray mill with red tiled roof stands in sunlight at the left, at the edge of a dark wood, and in a clearing on the right in the background is a group of dwellings, also in the sunlight. Two figures walk toward a bridge over the mill stream, and in the foreground a man is pushing a wheelbarrow.

Property of the Estate of the late MR. JAMES B. HAGGIN.

Pierre Mignard

FRENCH: 1610—1695

132—*PORTRAIT OF A LADY OF THE LOUIS XIV PERIOD*

(Oval)

Vertical diameter, 34¼ inches; horizontal, 27½ inches

THREE-QUARTER-LENGTH standing figure of a smiling lady in young maturity, in a low-cut gown of deep golden yellow lined with pale old rose, the corsage edged with white, and a rich blue velvet cloak lightly draped about her and held at one shoulder by a jeweled clasp. Companion to the "Portrait of a Gentleman" by the same artist.

Property of the Estate of the late Mr. JAMES B. HAGGIN.



Pierre Mignard

FRENCH: 1610—1695

133—*PORTRAIT OF A GENTLEMAN OF THE LOUIS XIV PERIOD*

(Oval)

Vertical diameter, 34 $\frac{1}{4}$ inches; horizontal, 27 $\frac{1}{2}$ inches

THREE-QUARTER-LENGTH standing figure of a dignified but affable gentleman in a great periwig, face nearly full to the front and figure turned toward the right. Left arm akimbo, his right hand is brought across his breast and held in a gesture, the index finger raised and the second finger brought to the tip of the thumb. His gray coat is gold embroidered, pink lined, and shows a white *jabot*, and over his arm is a black robe lined with red. A companion to the "Portrait of a Lady" by the same artist.

Property of the Estate of the late MR. JAMES B. HAGGIN.



Paulus Moreelse

DUTCH: 1571—1638

134—*PORTRAIT OF A LADY*

Height, 44 inches; width, 32¼ inches

THREE-QUARTER-LENGTH standing figure of a handsome and smiling young Dutch lady of the seventeenth century, facing very slightly toward the left and looking frankly at the spectator, her right hand resting on the back of a chair. In her left hand, dropped by her side, she holds gloves with ornate gauntlets. Her black gown is richly ornamented, her lace ruff and cuffs are of intricate pattern, and pearls and other gems adorn her hands and headdress. At the upper right appears a coat of arms, with an inscription beginning "Mari" and bearing the date 1629.

Property of the Estate of the late MR. JAMES B. HAGGIN.



**School of
Michiel Janszen Van Mierevelt**

DUTCH: 1567—1641

135—*PORTRAIT OF A LADY*

(Panel)

Height, 46¼ inches; width, 34 inches

THREE-QUARTER-LENGTH standing figure of a young Dutch lady of serene beauty, with cleanly chiseled features and large, brilliant eyes, placid but with ready smile. She is facing left, three-quarters front, with left arm hanging at her side and right hand slightly projected in front of her and holding a feather fan. She wears a rich dark greenish-black dress with globular metal buttons, a stiff white ruff and characteristic white tight headdress. At the upper left are two lines of lettering, "Ætatis" and "Anno 1617" appearing.

Property of the Estate of the late MR. JAMES B. HAGGIN.



Attributed to Pierre Mignard

FRENCH: 1610—1695

136—*PORTRAIT OF A NOBLE LADY*

Height, 51¼ inches; width, 36¾ inches

A YOUNG lady of easy curves and cheery expression, magnificently gowned, stands erect before a formal background of landscape with incidental architecture. She faces front, turned slightly toward the left, and holds out in one hand some freshly gathered flowers. She has delicately rose-tinged cheeks, warm lips and large blue eyes, and a wealth of dark hair worn in ringlets. Her white satin gown is low, the tightly fitting bodice and the front of the skirt are intricately embroidered in white and gold and munificently adorned with pearls, and her lace-edged short sleeves are set off with jewels of rich color. A scarf of blue and gold entwines her.

Property of the Estate of the late MR. JAMES B. HAGGIN.



Unknown Artist

(In the style of Antoine Vestier)

FRENCH: 1740—1824

137—PORTRAIT OF A LADY

Height, 50 inches; width, 40 inches

Portrait of a handsome, mature young woman, seen at three-quarters length standing, or caught momentarily in a brisk but gentle walk, against a landscape background of hillside and tree. She is in a rich white silk gown of creamy and pearly tones, with loose, short sleeves and loosely draped low corsage. Her fair hair is left largely free, she wears a broadly flaring hat adorned with white plumes, and from her shoulders hangs a flowing green-blue mantle, while in one hand she carries a red rose and in the other a white ostrich feather.

Property of the Estate of the late MR. JAMES B. HAGGIN.



Early Dutch School

138—*LANDSCAPE WITH CATTLE*

(Panel)

Height, 33½ inches; length, 45¼ inches

ON the left the edge of a wood rises boldly against the sky, which away on the right is filled with white clouds whose light is reflected in a shallow stream along the wood's edge and brings out in strong relief a low sloping bank on the right. Cows and sheep are in the water and on the bank, and back of a knoll two men are resting.

Property of the Estate of the late MR. JAMES B. HAGGIN.

Dutch School

(In the style of Govaert Flincke and Ferdinand Bol)

139—*PORTRAIT OF A LADY*

Height, 42 inches; width, 34½ inches

THREE-QUARTER-LENGTH figure of a lady in youthful maturity, facing the left, three-quarters front, observed against a dark neutral background of vague spaces and dimly discernible drapery. She wears a low-cut gown of dark reddish-orange with slashed puff sleeves, lace over her shoulder and drooping from her hat, which is adorned with rich plumes of varied color, and pearl ear-drops and necklace. Jewels sparkle from her hat and a corsage clasp, and strings of pearls bind her reddish-golden hair. Her cheeks are warm, and a mellow light plays on face and the liberally exposed breast.

Property of the Estate of the late MR. JAMES B. HAGGIN.



Jan Van Essen

DUTCH: 1857

140—*AMONG THE DUNES*

Height, 27½ inches; length, 41 inches

A LANDSCAPE showing the dunes of Holland, depicted with tempered tints of green, brown, white and gray. In the middle right center are two small figures seated, which serve by comparison to show the wide expanse of the landscape of the dunes; overhead a sky of gray and white clouds with a space or two of grayish-blue.

Signed at the lower right.

To be sold to close an Estate.

Sir Laurence Alma-Tadema, R.A.

ENGLISH: 1836—1912

141—*TRIUMPHAL ENTRY OF SIR WILLIAM VAN TAEFTINGEN, AFTER THE BATTLE OF THE GOLDEN SPURS*

Height, 38 inches; width, 26 inches

FULL in a soft, warm and mellow light, falling within the precincts of huge stone arches and columns, devoted followers bear the man triumphant on their shoulders, he and various of the followers wearing chain mail, in addition to soft robes of rich color. The fourteenth century procession moves impressively toward the right, eight figures appearing.

Signed at the top, to right of center, L. ALMA-TADEMA, 1860.

Property of the Estate of the late MR. JAMES B. HAGGIN.

Joseph Alvarez

SPANISH: CONTEMPORARY

142—*THE CARDINAL'S RECEPTION*

Height, 25 inches; length, 39¾ inches

IN a resplendent hall of an episcopal palace, crimson, green and gold, with marble floor and a canopied throne, a distinguished company has gathered, lay and ecclesiastical, a churchman is saluting the cardinal's ring, and the ladies and gentlemen seated and standing around are in apparel rivaling in richness the garb of the Church.

Signed at the lower right, J. ALVAREZ, ROMA.

Property of the Estate of the late MR. JAMES B. HAGGIN.

Jean Gustave Jacquet

FRENCH: 1846—1909

143—*AFTERNOON REFRESHMENT*

Height, 38¾ inches; length, 49¼ inches

ON a terrace beside a lake bordered by great trees in a palace park, with the corner of a portico in view on the right, a goodly company in brilliant costumes has gathered for amusement and refreshment. Young people all, they are grouped about a table, and at the moment chiefly interested in the approach of a patrician young woman attended by an eager suitor, whom they await with garlands and music, beverages and luscious fruits.

Signed at the lower left, G. JACQUET.

Property of the Estate of the late MR. JAMES B. HAGGIN.

George Inness, N.A.

AMERICAN: 1825—1894

144—MILKING TIME

Height, 29½ inches; length, 45 inches

IN the level pastures of the foreground a maid is seated milking a dark red cow, standing in side view, and there are four other cows nearby, in the left-hand portion of the picture. In the middle distance, from the right to the left center, is a belt of trees in thick summer foliage. On the extreme left are one or two farm buildings. A sunset sky shows strong qualified tints of red at the horizon, on the left, and through an opening in the trees, and gradates into warm yellow-blue above, with dark clouds at the top of the canvas.

Signed at the lower right, G. INNESS.

From the Maynard Collection, Boston.

Painted to order for Mr. Maynard.

Property of the Estate of the late MATTHEW ADDY.



Vaczlav von Brožík

BOHEMIAN: 1852—1901

145—*THE INTERESTING LETTER*

Height, 35½ inches; length, 47½ inches

AN elderly gentleman in black velvet and his wife in blue, both with wide collars, are seated in a great room richly furnished, a small grandson leaning against the woman's knee, all listening intently to the reading of a letter by a young lady in pink who is seated opposite. Behind her stands a dark young woman in blue, and two young men converse over a cup near a neighboring doorway.

Signed at the lower right, V. BROŽÍK, 1880.

Property of the Estate of the late MR. JAMES B. HAGGIN.



William Adolphe Bouguereau

FRENCH: 1825—1905

146—*AFTER THE BATH*

Height, 51¼ inches; width, 30 inches

A FULL-LENGTH, seated nude figure of a young girl with light brown hair falling loosely over her shoulders, her head turned to the spectator's left. Resting on her knee she holds her right foot, which she is drying with a white drapery. She is seated on a cloth of purple-blue which lies on a grassy bank, and at her feet, on either side, are jonquils growing. The background above shows a wooded slope with green foliage and a little patch of sky at the left upper corner.

Signed at the lower left, and dated 1891

Purchased direct from the artist.

The Estate of the late MATTHEW ADDY.



Félix François Ziem

FRENCH: 1821—1911

147—UNE FÊTE À VENISE

Height, 32¾ inches; length, 53½ inches

HOLDING the center of the scene is the gorgeous state barge, with red oars, creamy-white and opalescent sails and brilliant pennants, which carried the Doge to celebrate the marriage of Venice with the Adriatic. She is crowded, and sailors mount along the yards. The smoke of a saluting cannon appears astern, gondolas are moving in the lagoon and the shore is lined with people garbed in rich, soft colors. The most familiar buildings of the city appear on either hand, and sky and water are blue and fair, adding joyousness to the festal occasion.

Signed at the lower left, ZIEM.

*From the Charles A. Dana Collection, New York, 1898; No. 588.
Property of the Estate of the late MR. JAMES B. HAGGIN.*



Jean Léon Gérôme

FRENCH: 1824—1904

148—*THE DEATH OF CAESAR*

Height, 32½ inches; length, 57 inches

THE scene is laid in the Roman Senate Chamber. The Senators, in white togas, form a group in the middle of the composition as they retreat, after the murder, through the halls leading out of the building, their arms raised high as they brandish their daggers. In the immediate foreground, on the left, lies the body of the dead Caesar. His chair on his throne is overturned and on the right of the picture are the empty seats of the Senators. An impressive composition and known as one of the principal classical works of Gérôme.

Signed at the lower left, J. L. GÉRÔME, with date in Roman numerals.

Purchased from Boussod, Valadon & Co., Paris.

By order of MESSRS. WILDER, EWEN & PATTERSON, Attorneys.





Théophile de Bock

DUTCH: 1850—1904

149—*THE POND*

Height, 39 inches; length, 54¾ inches

A LANDSCAPE of impressive general effect, showing a pond in the right foreground amid green meadows which stretch across to the left of the composition, where a clump of bushes and trees show their white trunks and foliage reaching up to the top of the canvas; on the right, in the middle distance, the meadows are bordered by a belt of trees, and a church spire rises above them against a high summer sky of blue with some gray and white clouds

Signed at the lower left.

To be sold to close an Estate.



Frederick W. Watts

BRITISH:

150—*OLD MILL NEAR TUNBRIDGE, KENT*

Height, 36 inches; length, 52 inches

AN English pastoral landscape showing a mill with white walls and thatched roof, nestled amid the trees in a glade, its wheel slowly turning as water runs on it from the mill-race. The water of the stream runs into the middle foreground between banks covered with greensward, ferns, and other herbage. On the banks of the slopes, on either side above, are groups of trees, and on the right a hillside stretches high upward to the sky, which is filled with cumulus clouds except for spaces of blue near the top of the canvas.

Property of Mr. OREN WESTCOTT.

Charles François Daubigny

FRENCH: 1817—1878

151—ON THE FRENCH COAST

Height, 39½ inches; length, 75 inches

A LANDSCAPE of great breadth, and rich and varied feeling, sympathetically studied and freely and generously expressed—land, sea and the heavens, and distant shipping on the deep. In the foreground a plateau of rich verdure sweeping across the picture, the herbage dotted with field flowers and shrubs and wind-swept trees. Beyond, the blue-gray, gray-green sea in ceaseless, easy motion, under a sky of active clouds which shroud a reddened sun and yield but glimpses of the deep azure behind them.

Signed at the lower left, DAUBIGNY.

Property of the Estate of the late MR. JAMES B. HAGGIN.



LIST OF ARTISTS REPRESENTED
AND THEIR WORKS

LIST OF ARTISTS REPRESENTED
AND THEIR WORKS

CATALOGUE
NUMBER

ALMA-TADEMA, SIR LAURENCE, <i>R.A.</i>	
Triumphal Entry of Sir William van Taef- tingen, after the Battle of the Golden Spurs	141
ALVAREZ, JOSEPH	
The Cardinal's Reception	142
ANDERSON, A. A.	
Still Life: Game	67
ASSELYN, JAN	
Going to Market	17
BAIRD, WILLIAM B.	
A Horse Deal	9
BEARD, WILLIAM H., <i>N.A.</i>	
The Interrupted Picnic	15
BLAAS, EUGÈNE DE	
My Sweetheart	26
BLAKER, HUGH	
Portrait of George Bernard Shaw	50
BOCK, THÉOPHILE DE	
A Holland Church	12
The Pond	149

	CATALOGUE NUMBER
BODMER, KARL	
In the Forest of Fontainebleau	45
BOGGS, FRANK MEYERS	
At Honfleur	23
St. Vaast-la-Hoage	104
After the Rain	116
Honfleur	126
BONHEUR, M ^{lle} . ROSA	
King of the Jungle	42
Sheep	92
BOSCH, ÉTIENNE	
Santa Maria della Salute, Venice	65
BOUGHTON, GEORGE HENRY, <i>N.A., R.A.</i>	
Priscilla	38
BOUGUEREAU, WILLIAM ADOLPHE	
After the Bath	146
BRADFORD, WILLIAM, <i>A.N.A.</i>	
In the Arctic Regions	46
Fishing Fleet among the Icebergs	114
BROOKE, RICHARD NORRIS	
A Happy Pickanimy	66
BROWN, GEORGE LORING	
View of Artrami, near Amalfi, Gulf of Salerno	74
BROŽÍK, VACZLAV VON	
The Interesting Letter	145

	CATALOGUE NUMBER
CALIFANO, JOHN	
Swiss Mountains	24
Caring for the Flock	98
CALIGA, D.	
In the Louvre	102
CASANOVA Y ESTORACH, ANTONIO	
Succulent Oysters	32
CHAPMAN, CARLTON T., N.A.	
The Inlet	21
CHARBONNEL, L.	
The Consultation	37
COURTURIER, PHILIBERT LÉON	
Chickens	1
DAUBIGNY, CHARLES FRANÇOIS	
A Village Street	85
French Tug-boat	91
On the French Coast	151
DECAMPS, ALEXANDRE GABRIEL	
The Bay of Algiers	99
Landscape and Figures	109
DE HAAS, JOHANNES, H. L.	
Cattle	28
DELACROIX, F. V. EUGÈNE	
Caesar Viewing the Body of Pompey	97
Head of a Child	103

	CATALOGUE NUMBER
DELAMAIN, PAUL An Algerian Inn	62
DIAZ DE LA PEÑA, N. V. In the Forest Cupids' Festival	84 120
DUPRÉ, JULES The Coming Storm	118
DUTCH SCHOOL (In the style of Govaert Flincke and Ferdinand Bol) Portrait of a Lady	139
EARLY DUTCH SCHOOL Landscape with Cattle	138
EARLY ENGLISH SCHOOL (Style of Thomas Gainsborough, <i>R.A.</i>) Landscape	125
FRANÇAIS, LOUIS FRANÇOIS A Mountain Stream	111
GAINSBOROUGH, THOMAS, <i>R.A.</i> The Edge of the Common	129
GARDNER, ELIZABETH (Madame W. A. Bouguereau) Mother and Children	72
GÉRICAUT, JEAN L. A. THÉODORE Saddle Horse In the Stable A Horse	8 16 94

	CATALOGUE NUMBER
GÉRÔME, JEAN LÉON	
The Duet	33
Bashi-Bazouk Singing	40
Women at the Bath	60
A Journey through Algeria	108
Sale of a Circassian Slave	119
Departure from the Mosque	123
The Death of Caesar	148
GILPIN, REV. W., M.A.	
Derbyshire Landscape	53
GRISON, JULES ADOLPHE	
Rédaction d'un Pamphlet	87
GROLLERON, P. L. N.	
French Guard	89
HECKLER, H.	
Venice	20
HENNER, JEAN JACQUES	
Andromeda Chained to the Rock	82
HOBBEEMA, MEINDERT (<i>Attributed to</i>)	
Woodland Landscape	131
HUNT, WILLIAM MORRIS	
Sunlight and Shadow	31
INNESS, GEORGE, N.A.	
Milking Time	144
ISABEY, J. L. EUGÈNE	
On the Coast	75

ISABEY, LOUIS GABRIEL EUGÈNE	
Birth of Louis Treize, at Fontainebleau Palace, on the 27th of September 1601	107
JACQUE, CHARLES ÉMILE	
Poultry	7
Sheepfold	78
Interior with Sheep	81
JACQUET, JEAN GUSTAVE	
Afternoon Refreshment	143
JONGKIND, JOHAN BARTHOLD	
Moonlight: Rotterdam	106
KAEMMERER, FREDERIK HENDRIK	
Coming Home from the Fair	39
KLIMSCH, EUGEN	
In the Garden	76
LAMBINET, ÉMILE	
On the Oise	13
LANTARA, SIMON MATHURIN	
Youth	71
LAWRENCE, SIR THOMAS, <i>P.R.A.</i> (<i>School of</i>)	
Duke of Wellington	130
LENBACH, FRANZ VON	
A Lady of Quality	117

LEROUX, HECTOR	
The Adoration of the Goddess Minerva Polliade by the Maidens of Athens	73
MAX, GABRIEL CORNELIUS VON	
Young Woman	47
MELIN, JOSEPH	
Huntsman and Hounds	127
MEYER VON BREMEN, J. G.	
Mother and Child	77
MICHEL, GEORGES	
Landscape	4
Landscape: Near Montmartre	43
Woodland Landscape	44
Dutch Landscape	124
MIGNARD, PIERRE	
Portrait of a Lady of the Louis XIV Period	132
Portrait of a Gentleman of the Louis XIV Period	133
MIGNARD, PIERRE (<i>Attributed to</i>)	
Portrait of a Noble Lady	136
MOLENAER, JAN MIENSE	
The Tavern	93
MORAN, EDWARD, <i>A.N.A.</i>	
Mont St. Michel	54
MOREAU, ADRIEN	
At the Ferry	61

	CATALOGUE NUMBER
MOREELSE, PAULUS	
Portrait of a Lady	134
MÜLLER, CHARLES LOUIS	
In the Salon	36
Happy Parents	69
The Palace Studio	110
MURPHY, J. FRANCIS, N.A.	
Summer Sunshine	101
LOUDINOT, ACHILLE FRANÇOIS	
Borders of the River Lepté	70
PALIZZI, GIUSEPPE	
Forest Interior	35
PALMAROLI, VINCENTE	
The Approaching Storm	68
PEREZ, ALONSO	
The Toast	22
The Surprise	49
PERRAULT, LÉON BAZILE	
After Dinner	48
Tête de Jeune Femme	86
PEYROL, MADAME (Juliette Bonheur)	
Sheep in the Highlands	100
POITEVIN, EUGÈNE L.	
Shore View	19
POLLET, VICTOR FLORENCE	
Birth of Venus	10

	CATALOGUE NUMBER
PYNE, JAMES BAKER (<i>Attributed to</i>)	
The Festival	59
RICO, MARTIN	
Venice Garden	80
Along the River	83
ROBERT-FLEURY, JOSEPH NICOLAS	
Portrait of M. Rude	25
ROSIERSE, T.	
Refreshment at Evening	18
SANCHEZ-PERRIER, E.	
On the Alcala, Spain	5
SCHALCKEN, GODFRIED	
Backgammon	29
SCHREYER, ADOLF	
At the Oasis	79
Arabian Horsemen	122
Arab Cavaliers	128
SPRING, ALFONS	
Music in the Cloisters	30
Mother's Helpers	96
STEVENS, ÉDOUARD JOSEPH	
A Young Doe	58
TAIT, ARTHUR F., N.A.	
Deer	11
TAMBURINI, ANTONIO	
In the Wine Cellar	27

	CATALOGUE NUMBER
TENIERS, DAVID (<i>Attributed to</i>) Dutch Homely Life	88
TROYON, CONSTANT Study of a White Cow	113
UNKNOWN ARTIST (In the style of Antoine Vestier) Portrait of a Lady	137
VAN ESSEN, JAN Among the Dunes	140
VAN MARCKE, ÉMILE Cows Drinking Shepherd and Flock	112 115
VAN MIEREVELT, MICHIEL JANSZEN (<i>School of</i>) Portrait of a Lady	135
VAN RUISDAEL, JACOB (<i>Attributed to</i>) Woodland Stream	105
VAN SEVERDONCK, JOSEPH Sheep Chickens	2 3
VERBOECKHOVEN, EUGÈNE JOSEPH Sheep and Lambs On the Farm	55 63
VERNET, ÉMILE JEAN HORACE The Thoroughbred	56

	CATALOGUE NUMBER
VĚŠÍN, JAROSLAV	
Sleighing in Russia	34
VIBERT, JEHAN GEORGES	
A Beauty of Spain	95
Monsignor Having Refreshments	121
VOLLON, ANTOINE	
A French Village	90
VOS, F.	
Master's Faithful Guardians	6
WAGNER, PAUL	
The Young General	51
WATTS, FREDERICK W.	
Old Mill near Tunbridge, Kent	150
WILLEMS, FLORENT	
"Speak!"	41
The Proposal	64
WORMS, JULES	
A Cup of Chocolate	14
Departure of the Bride	52
ZIEM, FÉLIX FRANÇOIS	
Venice	57
Une Fête à Venise	147

FOR INHERITANCE TAX

AND OTHER PURPOSES

THE AMERICAN ART ASSOCIATION

IS EXCEPTIONALLY WELL EQUIPPED
TO FURNISH

INTELLIGENT APPRAISEMENTS

OF

ART AND LITERARY PROPERTY
JEWELS AND PERSONAL EFFECTS OF EVERY
DESCRIPTION

IN CASES WHERE
PUBLIC SALES ARE EFFECTED
A NOMINAL CHARGE ONLY WILL BE MADE

THE AMERICAN ART ASSOCIATION
MADISON SQUARE SOUTH
NEW YORK
TELEPHONE. 3346 GRAMERCY

COMPOSITION, PRESSWORK
AND BINDING BY





