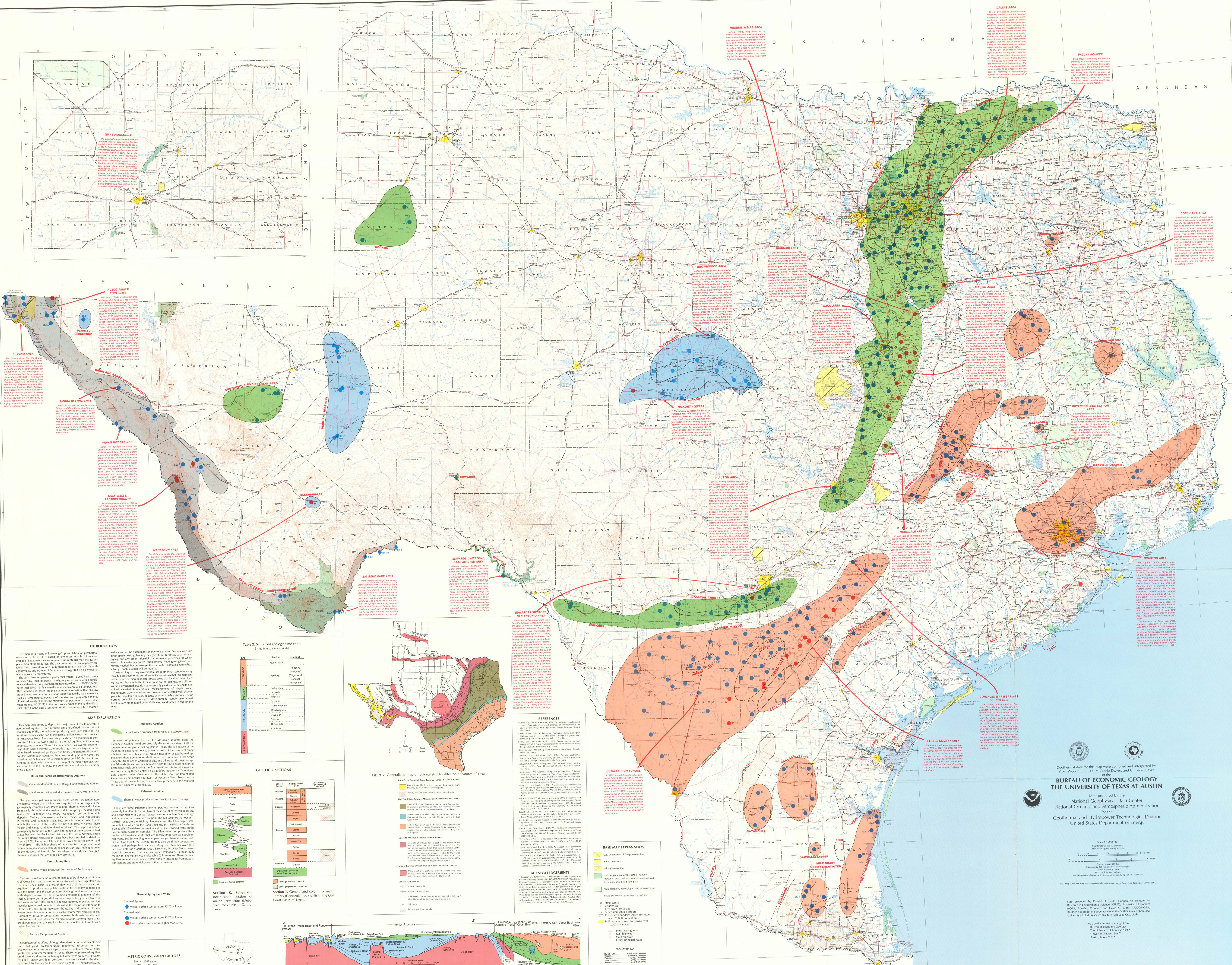
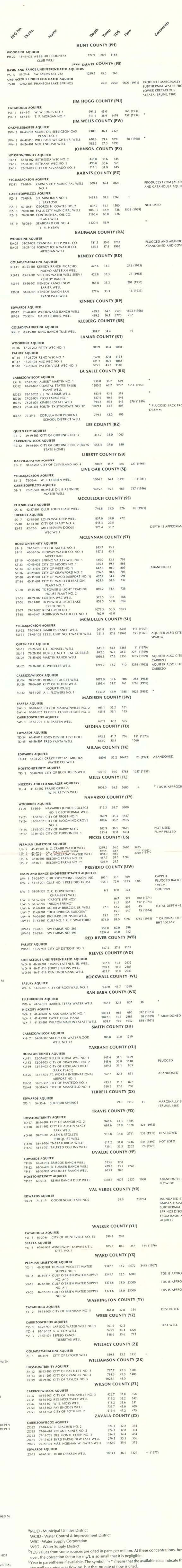


Table 1. Selected thermal wells and springs of Texas.
Data presented in this table are representative of the geothermal resources of Texas. Each well is listed as a 5-digit number.
These codes refer back to the table and to a legend for more information on geothermal resources of Texas. The data were collected from the Geothermal Resources of Texas: Geographical Summary Report, published by the Texas Department of Water Resources, Austin, Texas, 1982.

Well No.	County	Latitude	Longitude	Depth (ft)	Temperature (°F)	Flow Rate (gpm)	Notes
101	DALLAS	32°50'N	96°50'W	100	100	100	...
102	DALLAS	32°50'N	96°50'W	100	100	100	...
...

Figure 3. Texas state well numbering convention (modified from Texas Department of Water Resources).



INTRODUCTION

This map is a "generalized" presentation of geothermal resources of Texas. It is based on the most reliable information available to date. It is intended to provide a general overview of the geothermal resources of Texas. It is not intended to provide detailed information on the geothermal resources of Texas.

MAP EXPLANATION

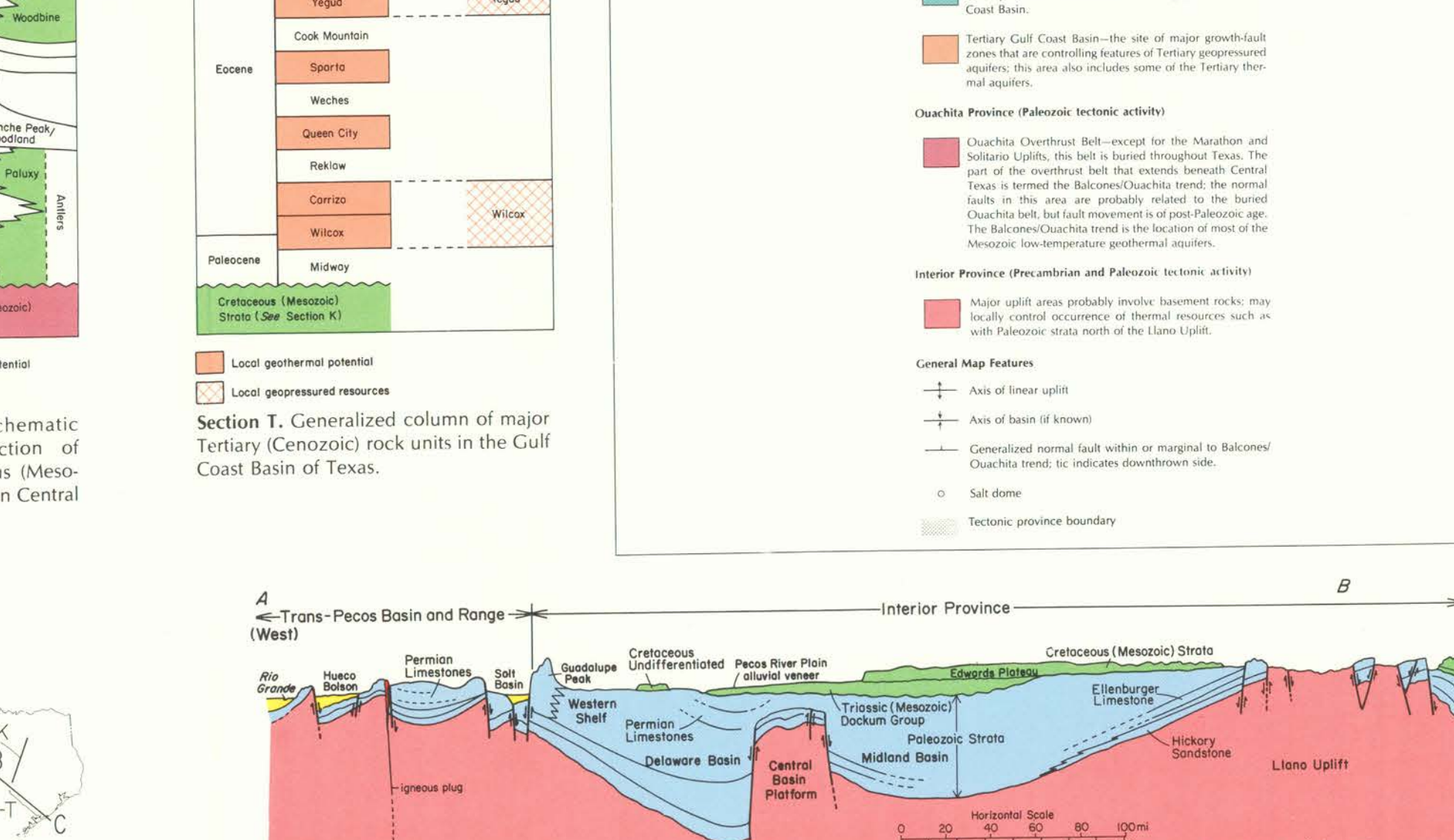
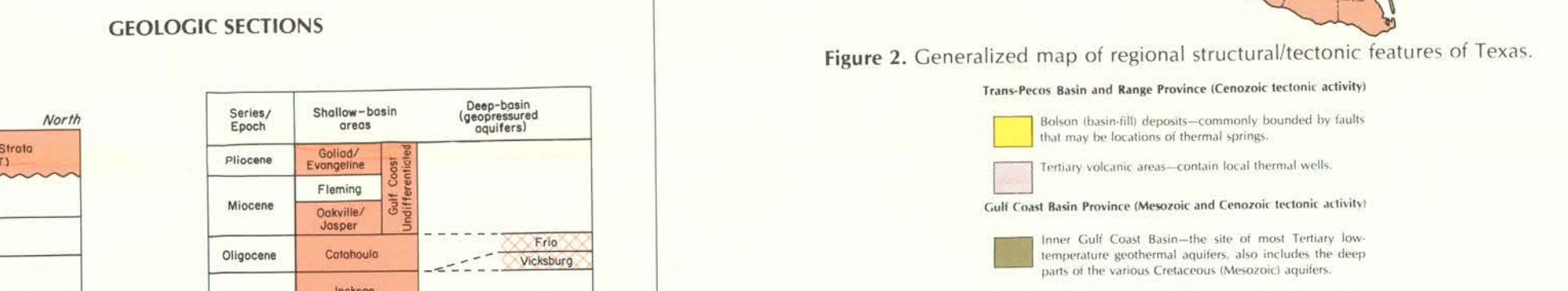
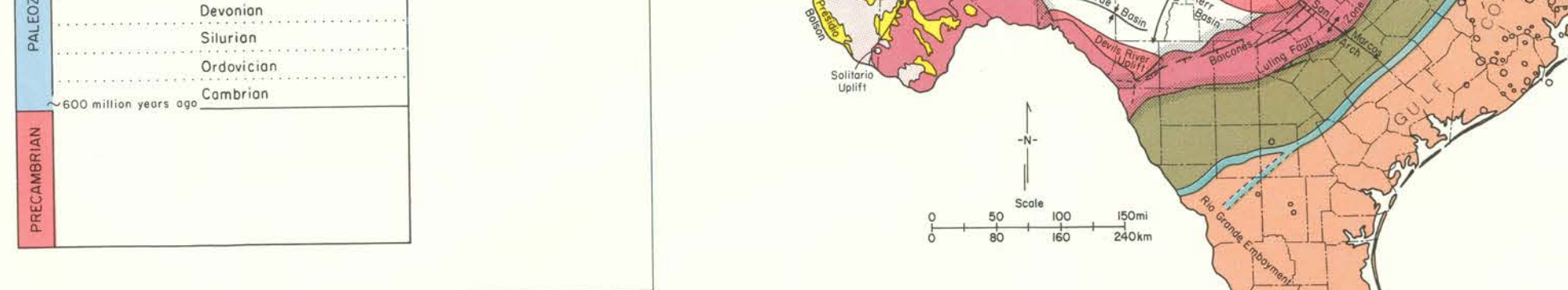
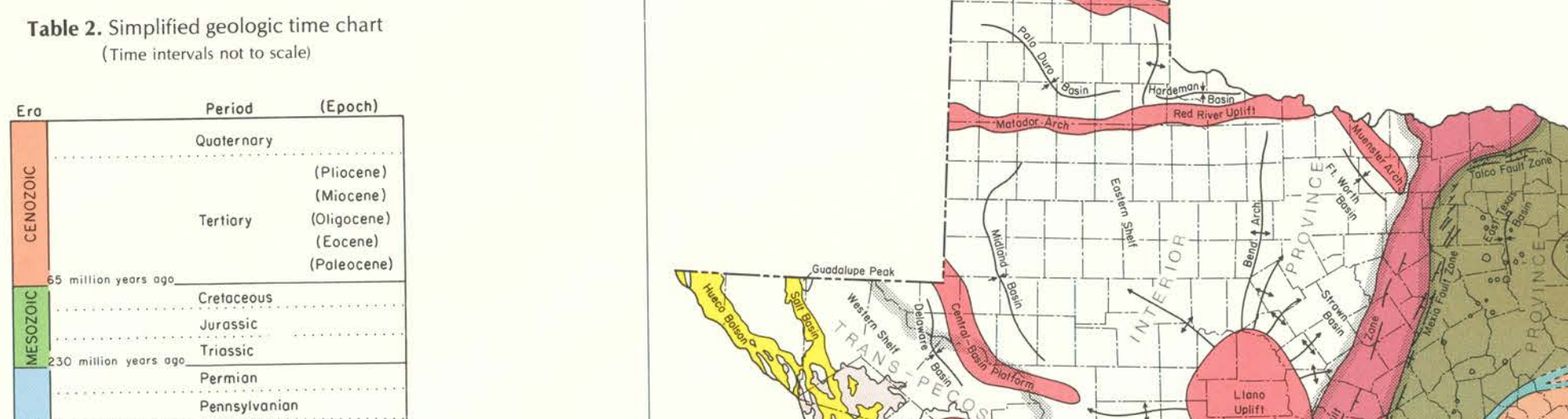
Thermal Wells and Springs
 • Green circle: Thermal well
 • Red circle: Spring
 • Blue circle: Thermal well or spring (unclassified)

Geothermal Resource Areas
 - Green: Central Basin
 - Blue: Big Bend
 - Orange: East Texas
 - Yellow: Permian Basin
 - Red: Gulf Coast

MAP EXPLANATION

Basal and Range Unidentified Aquifers
 - Grey: General extent of Basin and Range Unidentified Aquifers
 - Red: Local areas having well-developed geothermal potential

Geological Sections
 - Green: Paleozoic
 - Blue: Mesozoic
 - Orange: Tertiary



INTRODUCTION

This map is based on the most reliable information available to date. It is intended to provide a general overview of the geothermal resources of Texas. It is not intended to provide detailed information on the geothermal resources of Texas.

REFERENCES

1. American Association of Petroleum Geologists, 1978. Geology of Texas. Houston, Texas: AAPG.

2. Bureau of Economic Geology, University of Texas at Austin, 1982. Geothermal Resources of Texas: Geographical Summary Report. Austin, Texas: BEG.

3. ...

BASE MAP EXPLANATION

Geological Features
 - Yellow: Major fault
 - Green: Major fault
 - Red: Major fault
 - Blue: Major fault

Geographical Features
 - Red: Major fault
 - Green: Major fault
 - Blue: Major fault

ACKNOWLEDGMENTS

This map was prepared by the Bureau of Economic Geology, University of Texas at Austin. It is based on the work of many geologists and geographers. We thank them for their contributions.

Geothermal data for this map were compiled and interpreted by C.A. Woodruff, Jr., Basin Geology Division and Christine Carter, Bureau of Economic Geology, University of Texas at Austin.

Map prepared by the National Geophysical Data Center National Oceanic and Atmospheric Administration Geothermal and Hydrogeology Technologies Division United States Department of Energy

Scale 1:500,000
 1 centimeter equals 16.093 meters
 1 inch equals 2.54 centimeters

Map produced by the Bureau of Economic Geology, University of Texas at Austin. It is based on the work of many geologists and geographers. We thank them for their contributions.