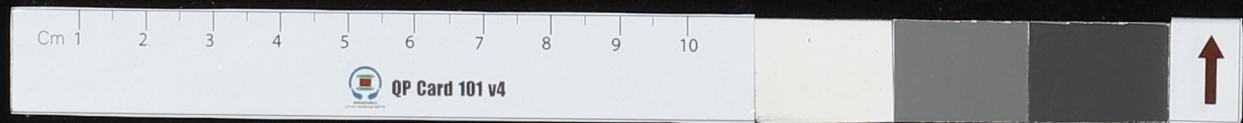


① Pangulem &
Hyang Khma

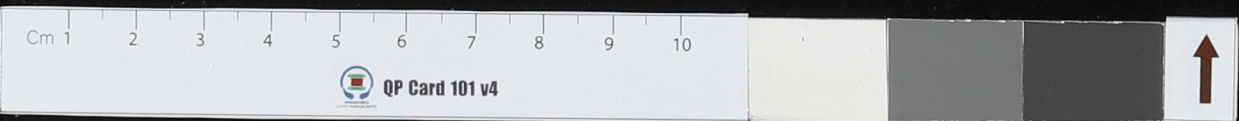
Handwritten text in Khmer script on the left side of the palm leaf.

Handwritten text in Khmer script on the right side of the palm leaf.



Handwritten text on a palm leaf manuscript strip, likely in an ancient script. The text is arranged in two columns. A small white label with the word "Samskrtva" is attached to the left edge.

Handwritten text on a second palm leaf manuscript strip, continuing the script from the first strip. It is also arranged in two columns.

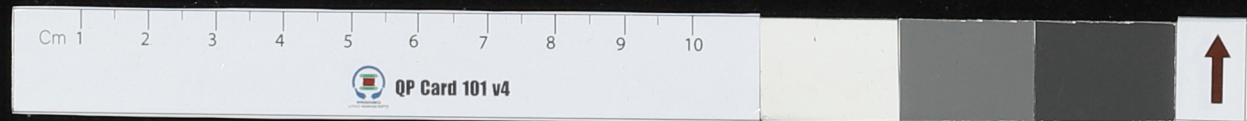


Handwritten text in an ancient script on a palm leaf, likely from the Tamil region. The text is arranged in approximately four lines.

Handwritten text in an ancient script on a palm leaf, likely from the Tamil region. The text is arranged in approximately four lines.

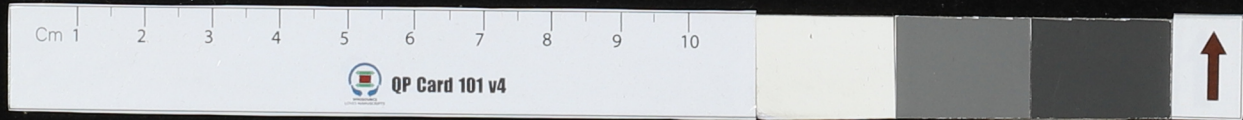
Handwritten text in an ancient script on a palm leaf, likely from the Tamil region. The text is arranged in approximately four lines.

Handwritten text in an ancient script on a palm leaf, likely from the Tamil region. The text is arranged in approximately four lines.



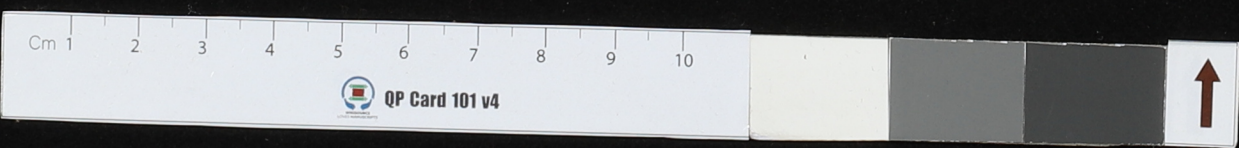
Handwritten text in two columns on a palm leaf strip. The script is an ancient form of a South Asian script, likely Grantha or Tamil. The text is arranged in approximately 10 lines across the two columns.

Handwritten text in two columns on a palm leaf strip. The script is an ancient form of a South Asian script, likely Grantha or Tamil. The text is arranged in approximately 10 lines across the two columns.



Handwritten text on a palm leaf manuscript strip, consisting of two columns of script.

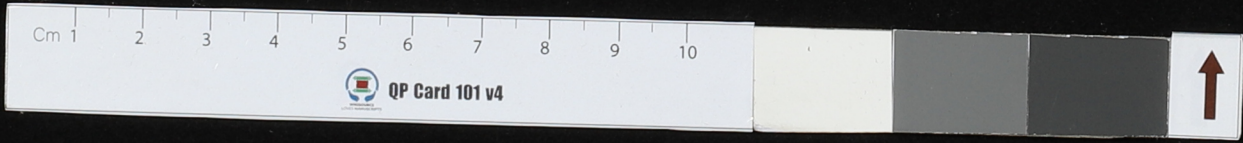
Handwritten text on a second palm leaf manuscript strip, also consisting of two columns of script.



QP Card 101 v4

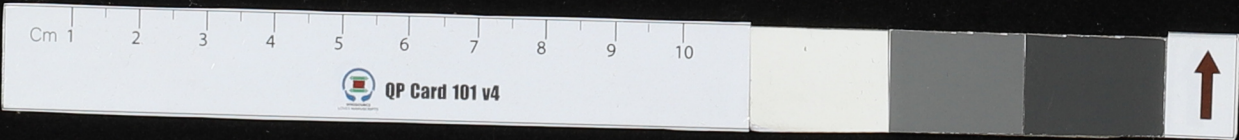
9
...
...
...
...

...
...
...
...



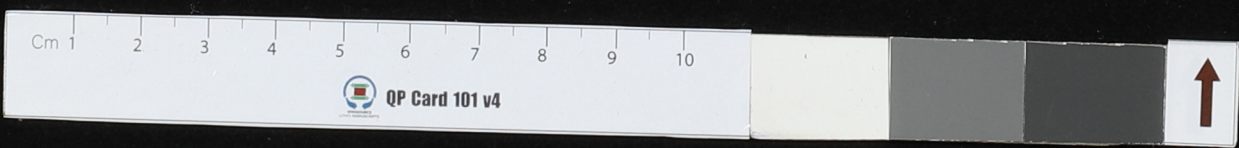
Handwritten text on a palm leaf manuscript strip, consisting of two columns of script.

Handwritten text on a second palm leaf manuscript strip, also consisting of two columns of script.



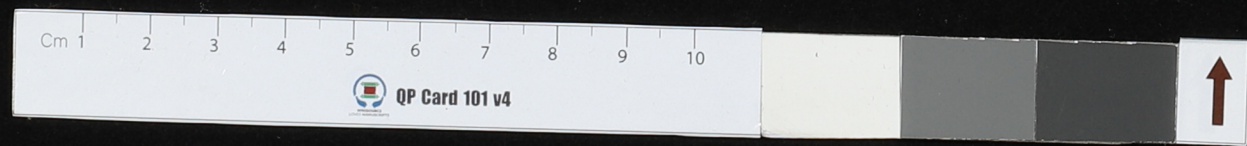
Handwritten text on a palm leaf manuscript strip, consisting of two columns of script.

Handwritten text on a second palm leaf manuscript strip, also consisting of two columns of script.



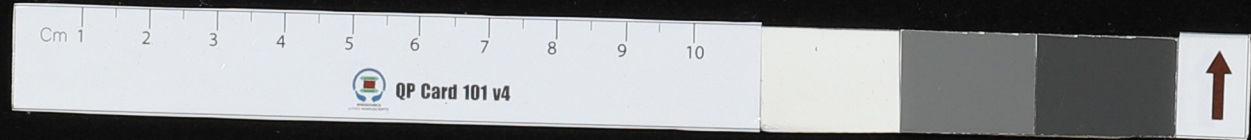
Handwritten text in two columns on a palm leaf fragment. The script is an ancient form of Tamil, likely from the Sangam period. The text is arranged in approximately four lines per column, with some characters appearing to be in a different script or dialect than the main body of text.

Handwritten text in two columns on a palm leaf fragment, similar to the one above. The script is consistent with the first fragment, showing a mix of characters and some distinct symbols. The layout is also in two columns with four lines each.



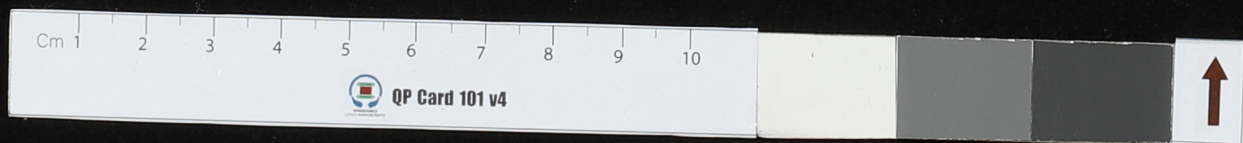
Handwritten text in an ancient script, likely Brahmi, on a palm leaf. The text is arranged in two columns, with a hole visible on the right side of the leaf. The script is finely etched into the surface of the dried leaf.

Handwritten text in an ancient script, likely Brahmi, on a palm leaf. The text is arranged in two columns, with a hole visible on the right side of the leaf. The script is finely etched into the surface of the dried leaf.



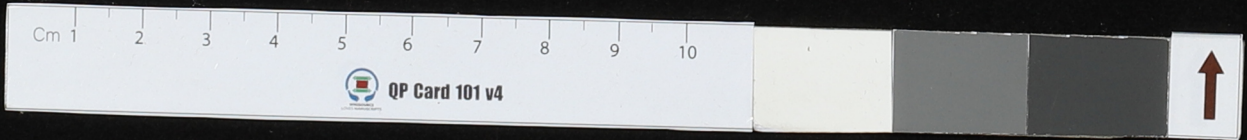
Handwritten text on a palm leaf manuscript strip, consisting of two columns of script.

Handwritten text on a palm leaf manuscript strip, consisting of two columns of script.

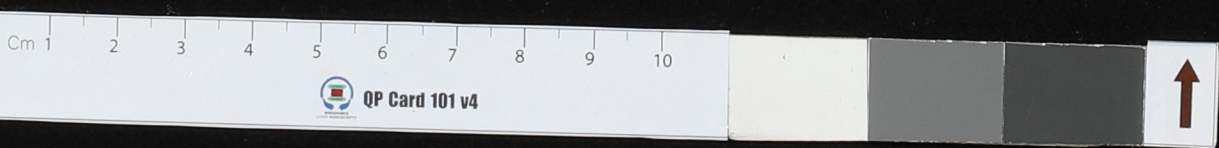


Handwritten text on a palm leaf strip, consisting of two columns of script. The script is a form of South Indian Brahmic script, likely Grantha or Tamil. The text is arranged in approximately 10 lines across the strip.

Handwritten text on a second palm leaf strip, also consisting of two columns of script. The script is similar to the one on the first strip. The text is arranged in approximately 10 lines across the strip.



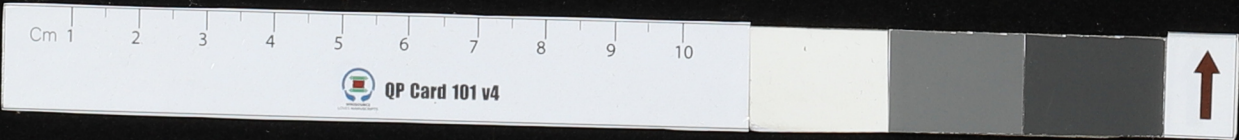
Handwritten text on a palm leaf strip, consisting of two columns of script.



Handwritten text on a second palm leaf strip, also consisting of two columns of script.

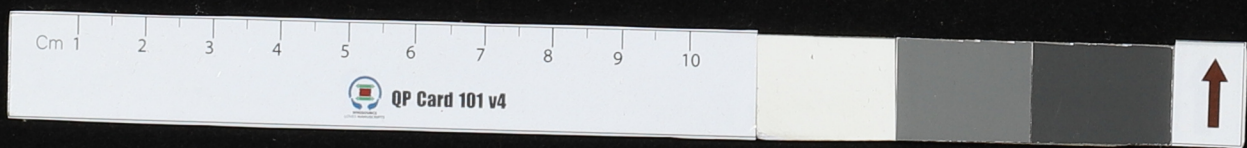
Handwritten text on a palm leaf manuscript strip, consisting of two columns of script.

Handwritten text on a second palm leaf manuscript strip, also consisting of two columns of script.



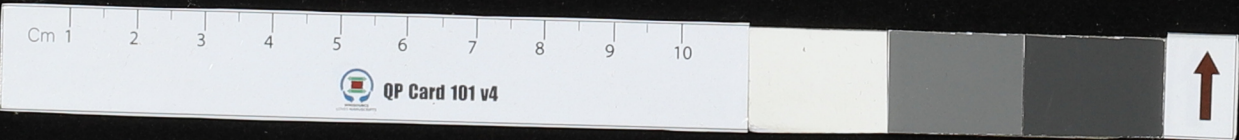
Handwritten text on a palm leaf manuscript strip, consisting of two columns of script.

Handwritten text on a second palm leaf manuscript strip, also consisting of two columns of script.



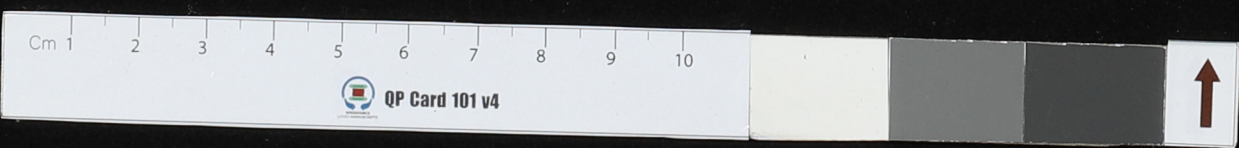
Handwritten text on a palm leaf manuscript strip, consisting of two columns of script.

Handwritten text on a second palm leaf manuscript strip, also consisting of two columns of script.



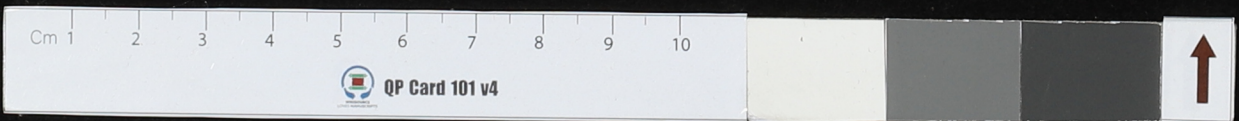
Handwritten text in Devanagari script on a palm leaf manuscript. The text is arranged in two main sections. The first section on the left contains approximately 15 characters. The second section on the right contains approximately 25 characters. There are two circular holes visible on the leaf, one on the left and one on the right, used for binding.

Handwritten note: ३-४-१९६५ = K. K. K.



Handwritten text on a palm leaf manuscript, likely in an Indic script. The text is arranged in several lines across the length of the leaf. A small white label is attached to the left end, and a circular metal fastener is visible near the center.

① Ponglom
Miyang Shun



Handwritten text in Devanagari script on a palm leaf manuscript. The text is arranged in two lines across the length of the leaf. A white string is tied around the center of the leaf to hold it together.

3-2-1965 = 1965

