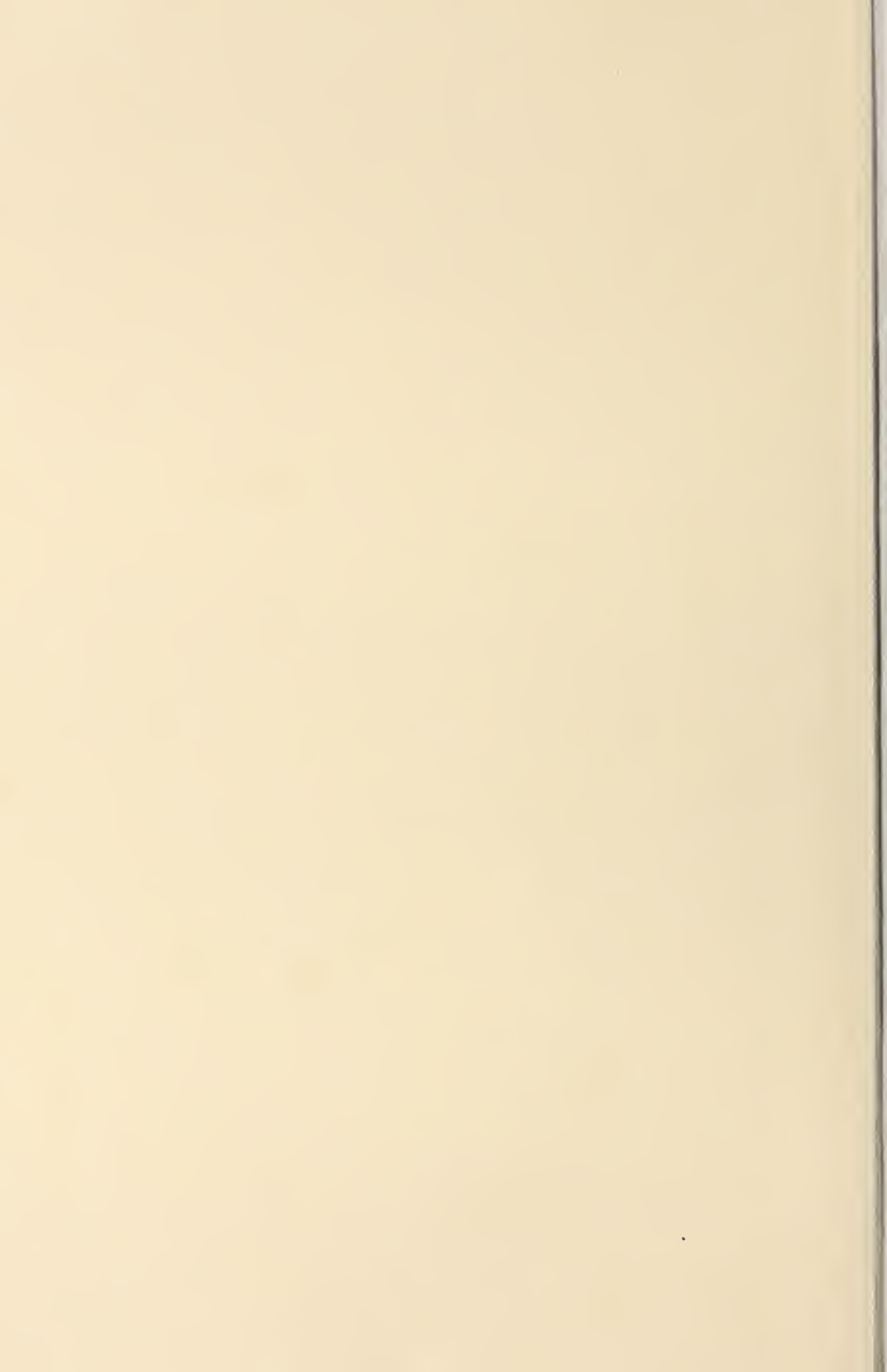


Historic, Archive Document

Do not assume content reflects current scientific knowledge, policies, or practices



68.60

Wyatt's Garden Book

FALL
1930

SEEDS, PLANTS, BULBS
GARDEN SUPPLIES



LIBRARY
RECEIVED
★ OCT 1 1930 ★
U.S. Department of Agriculture

It will require 200 bulbs to reproduce the above planting.
Special price \$7.95 delivered.

Clara Butt (Pink) 60c doz.; \$4.25 per 100
Mrs. Potter Palmer (Purple) 75c per doz.;
\$5.75 per 100

Inglescombe Yellow, 60c doz.; \$4.50 per 100
Pride of Haarlem (Rose) 60c doz.; \$4.50
per 100

THE LEADING SEED HOUSE OF THE CAROLINAS

JOB P. WYATT & SONS COMPANY

Established 1881

RALEIGH, N. C.



EMPRESS NARCISSUS
15c each, \$1.50 per dozen, \$9.00 per 100.

Giant Trumpet Varieties, Including New and Rare Sorts

Emperor. Midseason. A magnificent sort. The entire flower is a rich yellow; trumpet of immense size and petals so broad that they overlap. Three of these bulbs planted in a 6-inch pot will make a splendid show. Large bulbs, each 15c, dozen \$1.50, \$9.00 per 100.

Glory of Leiden. Trumpet and perianth deep yellow. Each 15c, dozen \$1.20, \$8.00 per 100.

Golden Spur. Extra early. A tall, vigorous, golden yellow flower, with healthy green foliage. Fine for beds or pots. Very early. Large bulbs. Each 12c, dozen \$1.20, \$3.00 per 100.

King Alfred. Midseason. "The King of Yellow Daffodils." Tall, vigorous, golden yellow flower, of elegant form. The expanded trumpet measures $2\frac{1}{2}$ inches in diameter, the perianth proportionately large and segments gracefully twisted. Height 24 inches. Mammoth bulbs. Each 20c, dozen \$2.25, \$16.00 per 100.

Olympia. Early. A giant flower rivaling Van Waveren's giant in size; sulphur yellow perianth, handsome yellow frilled trumpet. Each 20c, dozen \$2.25, \$16.00 per 100.

Treserve. Early. Very large canary-yellow trumpet, broad at the mouth and deeply flanged; primrose-yellow perianth. Each 25c, dozen \$2.75, \$20.00 per 100.

Narcissi or Daffodils

In order to have a beautiful bulb-garden, Narcissi should be planted very freely. They thrive in practically any climate in the United States and it is small wonder that the demand is doubling every year. They are not only excellent for outdoors, but millions are used every year for forcing indoors. We have compiled a list (as short as we could make it) of the best and most attractive varieties for indoor, outdoor, and exhibition purposes, and it is complete and easy to select from.

Culture. The same as Tulips, although they should be planted as close as possible in the open or pans. After active growth commences, give plenty of water.

Culture Outdoors. They should be planted so that the top of the bulb is at least 5 inches beneath the soil. A little protection should be given during severe winter weather, although they are perfectly hardy.

In our descriptions we use the following terms: **Perianth**—the outer petals of the flower. **Trumpet**—the long cup- or trumpet-shaped center. **Crown** or **Cup**—the short or flat center.

Trumpet Bicolor

Empress. Midseason. This makes a fitting companion to Emperor. We think is one of the finest of bicolors. The trumpet is of a rich yellow, with perianth of snow white petals; flowers bold and erect. Large bulbs. Each 15c, doz. \$1.50, \$9.00 per 100.

Victoria. Large, erect flowers; creamy white perianth and rich yellow trumpet; forces easily. The earliest of bicolors. First size dozen \$1.20, \$8.00 per 100.

Giant Princes Sulphur colored perianth, with rich yellow trumpet; early variety. 2 for 25c, dozen \$1.25, \$8.00 per 100.

Madame De Graaff. Wonderful flower, almost pure white. Each 15c, dozen \$1.50, \$11.00 per 100.

Vanilla. This is a grand, tall-growing and very handsome variety, having a fine, bold trumpet of deep yellow, with a paler perianth, and possessing the added charm of a most pleasing and delicate odor. It flowers the same time as Emperor, and is a good variety for forcing. Height 20 ins. Each 15c, dozen, \$1.20, \$8.00 per 100.

Van Waveren's Giant. Early. This is the largest of all Narcissi; the flowers are of huge dimensions, perianth primrose with bright yellow trumpet; it is a splendid forcer and we strongly recommend our customers to give it a serious trial, as it is sure to catch the public's attention on account of its gigantic appearance. Being a vigorous grower, we consider it one of the best propagators of all Narcissi. Each 30c, dozen \$3.00.

Jonquil Camparnel Odorus Rugulosus.

Rich yellow. The single sweet-scented Jonquil. Beautiful star-shaped flowers borne in clusters of four to six on a stem. \$1.20 per dozen, \$8.00 per 100.

Jonquil Camparnel Rugulosus Flora

Plena. The double sweet-scented Jonquil Clusters of double rich yellow flower, very fragrant, and prized for cutting. \$1.25 per dozen, \$9.00 per 100.

NARCISSUS POETAZ HYBRIDS

These are very strong scented and bear clusters of flowers resembling the Poet's Narcissus.

Elvira. Pure white, yellow eye, large flower, 3 to 4 flowers on a stem, very free-flowering. Dozen \$1.40, \$10.50 per 100.

Laurens Koster. Early. Pure white; large orange yellow cup. Dozen \$1.25, \$8.00 per 100.

Medium Trumpet Narcissi, or Daffodils

This is also a very popular type or rather types of the Narcissus or Daffodil family. Splendid for garden culture, in pots or pans, or in flats, for cut-flowers.



Poeticus Ornatus.

The Poet's Narcissi *Narcissus poeticus*, *Poeticus Recurvus* (Pheasant's Eye). Late. Pure white, orange red cup; sweet-scented. Dozen \$1.25, \$9.00 per 100.

Poeticus Ornatus. Midseason. Larger and earlier than above. Double nosed bulbs. Dozen 90c, \$7.50 per 100.

Crocus

One of the earliest flowers to bloom in the Spring outdoors. In the border plant them in groups of at least 25 of one color, setting the bulbs 2 inches deep and not more than 2 inches apart. Large mass plantings produce a gorgeous display of bright colors. They will come again year after year—and die down out of the way after blooming. Crocus also is adapted to growing indoors.

Baron Von Brunow. Dark blue.

Mont Blanc. Largest pure white.

King of the Whites. Best pure white.

Giant Striped. Very strikingly variegated colors—white with blue stripes; large.

Purpurea Grandiflora. Dark glossy purple.

King of the Blues. Large, rich blue.

Sir Walter Scott. White, striped with purple. Above varieties all at 45c per dozen; \$3.00 per 100, delivered.

Mammoth Yellow. Extra large flowers of rich yellow, very attractive in the lawn. Large bulbs, 50c per dozen; \$3.75 per 100.

ALL COLORS MIXED. Large flowering. 40c per dozen; \$2.50 per 100; \$22.00 per 1000, prepaid.

Barrii Conspicuus. Midseason. Yellow perianth, short cup, edged orange. Dozen \$1.00, \$7.50 per 100.

Lucifer (Incomparabilis). Midseason. Perianth sulphur-white, with long, well-rounded petals; cup chrome-yellow, with intense orange-scarlet suffusions. A bold, showy flower for outdoors, holding its color well, and splendid for exhibition. Height 18 inches. Each 15c, dozen \$1.25, \$9.00 per 100, \$80.00 per 1,000.

White Lady Leedsii. Midseason. Broad round overlapping perianth, pale canary cup, very fine. Each 10c, dozen \$1.00, \$7.00 per 100.

Sir Watkin. A well-known Daffodil, excellent for large plantings, or growing in pots. Full perianth of pure yellow with large rich golden trumpet. Large size. Dozen \$1.25, \$9.00 per 100, \$85.00 per 1,000.

DOUBLE NARCISSI

Alba Plena Odorata (Double Poeticus)

Pure white, resembling a Gardenia; sweet-scented. Likes partial shade and heavy moist soil. Dozen \$1.25, \$8.00 per 100.

Orange Phoenix (Eggs and Bacon).

Double, white and orange; beautiful. Dozen \$1.25, \$9.00 per 100.

Sulphur or Silver Phoenix. Creamy white; beautiful flower; splendid. Dozen \$1.25, \$9.00 per 100.

Von Sion. Pure yellow, large expanded trumpet, excellent for forcing. Dozen \$1.50, \$11.00 per 100.



Wyatt's Giant Crocus.

Wyatt's Superb Darwin Tulips

A great many of the varieties will force to good advantage and may be had in bloom during March. They thrive in the Southern States better than the early Tulips.

Afterglow. Deep orange suffused with salmon and salmon edge. Height 26 inches. \$1.00 per doz., \$7.75 per 100.

Baron de La Tonnaye. Vivid pink, margined blush rose, long, large flower. Height 26 ins. Dozen 60c, \$4.50 per 100.

Bartigon. Dazzling scarlet, big strong stem; large flower. Dozen 65c, \$4.75 per 100.

Clara Butt. Clear pink, flushed salmon rose. Height 21 ins. Dozen 60c, \$4.25 per 100.

Dream. (25 inches.) Pale violet changing to lavender, with lighter edge, clear blue base. Dozen 65c, \$4.95 per 100.

Europe. Glowing salmon scarlet shaded rose. Height 22 inches. Dozen 60c, \$4.50 per 100.

Euterpre. Silvery lavender edged pale lilac. Base white and blue. A long flower of beautiful shape; the finest lavender to plant with bronze Breeder tulips. Dozen 70c, \$5.00 per 100.

Faust. Black violet. One of the best Tulips. Doz. \$1.00, \$7.50 per 100.

Farncombe Sanders. Brilliant scarlet. A very handsome large flower of intense coloring. Height 25 inches. Dozen 65c, \$4.50 per 100, \$43.00 per 1000.

Inglescombe Yellow. Glossy canary yellow. The large globular flower has the true shape of the Darwin Tulip, hence it is called the Yellow Darwin. Dozen 60c, \$4.50 per 100, \$40.00 per 1000.

Isis. Fiery crimson scarlet; one of the most popular. Height 24 ins. Dozen 75c, \$5.50 per 100.

La Tulipe Noire. Very large; almost black—unique coloring. Dozen 80c, \$6.00 per 100.

Le Notre. Pink, with paler margin. Dozen 75c, \$6.00 per 100.

La Candeur (White Queen). Almost pure white when mature, at first tinged pale rose, medium size flower. Height 24 inches. Doz. 65c, \$4.95 per 100.



Prince of the Netherlands.

Prince of the Netherlands. Brilliant rosy scarlet, shaded deep salmon rose. A very large handsome variety of stately bearing. Height 30 inches. Dozen 65c, \$5.50 per 100.

La Fiancee. Deep rose, shading to old-rose and delicate pink at the edges, with blue base. A splendid variety of large size, and very effective when planted with mauve and dark lavender sorts. Height 30 inches. Dozen \$1.10, \$7.50 per 100.



Wyatt's Special Darwin Assortment.

12 Bulbs
60c

25 Bulbs
\$1.10

50 Bulbs
\$2.00

100 Bulbs
\$3.75

Wyatt's Giant Darwin Tulips (Continued)

Mrs. Potter Palmer. Bright purplish violet. Dozen, 75c, \$5.75 per 100.

Madame Krelage. Lilac rose; extra fine. Height 28 inches. Dozen 70c, \$5.25 per 100.

Massachusetts. Soft rose, tinted carmine, pink edges, pink inside, white base. Height 24 inches. Dozen 70c, \$5.00 per 100.

Painted Lady. Creamy white and heliotrope. Dozen 65c, \$4.50 per 100.

Pride of Haarlem. Rosy carmine. A very brilliant large flower and one which we can recommend highly. 25 inches. Dozen 60c, \$4.50 per 100, \$40.00 per 1,000.

Princess Juliana. Salmon-orange scarlet, a remarkable and beautiful flower. Dozen 75c, \$5.75 per 100.

Princess Elizabeth (Syn. Julie Vinot). (26 inches.) Large flower; soft rich rose toning to silvery-rose at edges. Inside deep rose, white base. Highly recommended. Dozen 65c, \$4.50 per 100.

Philippe de Comines. Velvety dark purple. Dozen 70c, \$5.00 per 100.

REMBRANDT TULIPS

The Rembrandt Tulips are simply striped and feathered Darwin Tulips. 75c dozen, \$6.00 per 100.

Psyche. Rich rose silvery pink shaded; very fine. 28 inches. Dozen 65c, \$4.75 per 100.

Rev. H. Ewbank. Vivid heliotrope lilac, with light tint at the margin. 20 inches. Dozen 65c, \$4.50 per 100.

Sieraad Van Flora. (24 inches.) Bright rosy pink flower, shaded with lilac; blue base. Very effective. Dozen 70c, \$5.00 per 100.

The Sultan. Rich maroon black, small flower of a good form. Dozen 65c, \$4.50 per 100.

Valentine. The finest soft heliotrope Darwin tulip. 85c per dozen, \$6.00 per 100.

William Copland. Light lilac; lovely color; early. Dozen 70c, \$5.00 per 100.

William Pitt. Very dark crimson, with purplish bloom on the outer petals. Of great size and beauty. Height 24 inches. Dozen 70c, \$5.00 per 100.

Zulu. Velvety violet black; flower egg-shaped. 26 inches. Dozen 70c, \$5.00 per 100.

Peat Moss

Peat Moss is wonderful for enriching soil and mulching plants. Large Bales, \$5.00, Raleigh, 5 bales at \$4.75 each. 10 bales at \$4.60 each.



Old English Cottage Tulips (May Flowering)

The tulips belonging to this class owe their name to the fact that many of them had been found growing about country houses and cottages in England and France generations ago. All imaginable colors are now represented in this class. They all have long stems and very graceful formation and are therefore unsurpassed for the garden and excellent for cutting. In planting, the bulbs should be set a little deeper than ordinary tulips, a covering of 4 inches being about right.

Bouton d'Or. 16 inches. Round, shapely blooms of the purest gold. Dozen 65c, \$4.50 per 100, \$38.00 per 1,000.

Gesneriana Major, or

Spathulata. 24 inches. Dazzling crimson scarlet with violet black center, large flowers. Does exceptionally well in Raleigh. Dozen 70c, \$4.50 per 100.

Gesneriana Lutea. 20 inches. A very shapely bloom of the purest yellow; distinctly sweet scented. Dozen 70c, \$4.50 per 100, \$40.00 per 1,000.

Inglescombe Pink. 24 inches. A most lovely tulip with a large flower of bright rose pink. Dozen 70c, \$4.50 per 100.

Inglescombe Scarlet. Brilliant scarlet; enormous flower. Doz. 75c, \$5 per 100.

Inglescombe Yellow. 18 inches. Color a full rich yellow; sometimes called the Yellow Darwin. Dozen 60c, \$4.50 per 100, \$40.00 per 1,000.

La Merveille. A magnificent variety, with large, sweet-scented, orange red flowers. Dozen 65c, \$4.50 per 100.

Double Early Tulip. All leading sorts and colors. 60c to \$1.50 per dozen.

Single Early Tulips 60c to \$2.00 per dozen.



Gesneriana Major, or Spathulata.

Mrs. Moon. 30 inches. The finest late yellow tulip in existence. The blooms are long and pointed; the outer petals reflexed. Distinctly perfumed. Doz. 75c, \$6.50 per 100, \$70.00 per 1,000.

Orange King. Beautiful bright orange, very large flower. Dozen 70c; \$5 per 100.

Picotee, or Maiden's

Blush. Long; clear white; the petals, which are pointed and elegantly reflexed, are beautifully margined and penciled on edges with bright pink. Dozen 65c, \$4.50 per 100, \$40.00 per 1,000.

Picotee Yellow. Flowers are clear yellow with a narrow border of crimson, which suffuses the flower as it ages. A lovely graceful variety. Dozen 70c, \$4.75 per 100.

Sirene. One of the Lily-shaped varieties of exquisite beauty. Glistening satiny rose with paler edges. Height, 16 inches. Dozen 90c, \$6.50 per 100.

Superb Mixture of Cottage Tulips.

Dozen 55c, \$4.00 per 100.

WYATT'S MIXED DAFFODILS

Extra Mixture of Best Trumpets, \$7.00 per 100, \$65.00 per 1,000.

Selected Mixture Best Incomparabilis, Ledsi and other varieties, \$6.75 per 100, \$62.50 per 1,000.

Old Dutch Breeder Tulips

Breeder Tulips are very similar in habit to the Darwins, and flower at the same time. Their chief characteristic is their immense blooms, borne on strong, stiff stems, many of them longer than the most gigantic Darwins. The revival of the taste for art colors has made these Tulips strong favorites with American enthusiasts, who find in their bronze, buff, and brown shades excellent material for contrasting with the light and bright colors of the Darwins. They require same cultural treatment as the Darwins.

Apricot. Dull, bronzy buff, shaded ruddy apricot base. Dozen 90c, \$6.50 per 100.

Bronze Queen. 28 ins. Beautiful flowers on long stems; soft buff tinged with golden bronze. Dozen 70c, \$5.00 per 100.

Cardinal Manning. Dark rosy violet. Dozen 85c, \$6.00 per 100.

Chestnut. Very dark brown, almost black. 85c per doz., \$6.50 per 100.

Copernicus. Fine dull bronze-buff, shaded dark apricot, olive base. Dozen \$1.10, \$8.00 per 100.

Dom Pedro. The finest deep coffee brown with narrow edge of golden brown. Dozen \$1.00, \$7.00 per 100.

Golet Parfait. 30 ins. Bright violet, with white base, very large flower. Dozen \$1.10, \$7.50 per 100.

Fantasy. The marvelous pink Parrot tulip. A sport of Clara Butt with the same base color, height, strong stem and time of flowering. It has, in addition, encrustations of apple green on the backs of the petals which are lacinated in the characteristic manner of the Parrot tulips. This is the gorgeous new variety that created so much comment at the Flower Show last season. \$1.25 each; \$13.00 per dozen.

Baughgro

THE IDEAL PLANT FOOD
for
Lawns, Flower, Gardens,
Trees.

Baughgro is a well balanced food for all vegetation and assures a bountiful, healthy plant, rich in color, sturdy and prolific of fruit and flower.

Easy to apply and odorless. Descriptive information on request.

- 5-lb. bag \$0.50
- 25-lb. bag 1.75
- 50-lb. bag 3.00
- 100-lb. bag 5.00



Hyacinth Glasses

In three colors—Green, Blue and White, in low and high patterns; for forcing Hyacinths to bloom in water. 45c each; \$4.80 per dozen. Parcel post, 10c each extra.



Tye Shape.



Belgian.

Louis XIV. 16 ins. An immense flower, rich purple, with golden bronze margin; inside bronzy purple. A gigantic and very handsome Tulip. Dozen \$1.00, \$7.00 per 100.

Marie Louise. Rose, shaded salmon; edged bronze orange. Height 23 ins. Dozen 75c, \$5.75 per 100.

Medea. Salmon Carmine; one of the largest Tulips in cultivation. Doz. 75c, \$5.75 per 100.

Prince of Orange. Orange red, light border. Dozen \$1.00, \$7.00 per 100.

Yellow Perfection. Light bronze yellow, edged golden. Doz. 75c, \$5.50 100.

Wyatt's Special Mixture Breeder Tulips

An excellent collection of this popular class of Tulips, including many rare colors. Dozen 60c, \$4.25 per 100, \$42.50 per 1,000.

STIM-U-PLANT

A highly concentrated odorless fertilizer for the vegetable and flower garden, shrubs and house plants. The analysis is guaranteed 11 per cent nitrogen, 12 per cent phosphoric acid, 15 per cent potash, an ample amount of each plant food to insure a quick and strong growth of all plants. 10-tablet pkg. 1 c; 30-tablet pkg. 25c; 100-tablet pkg. 75c; 1000-tablet pkg. \$3.50, postpaid.



RICHMOND STLYE CEDAR PLANT TUBS

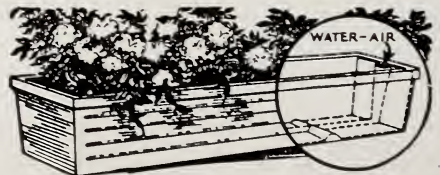


Richmond Style

- Size No. 4. Each.....\$0.75
- Size No. 5. Each..... .85
- Size No. 6. Each..... 1.05
- Size No. 8. Each..... 1.65
- Size No. 9. Each..... 1.90
- Size No. 10. Each..... 2.10

We can also supply other styles and sizes of Plant Tub.

THE PERFECTO FLOWER BOX Self-Irrigating, Air-Circulating, Drainage FINISH: Old Ivory, Red or Green



Prices

- 20 in. long, 6 in. deep, 7 in. wide.....\$1.25
- 26 in. long, 6 in. deep, 7 in. wide..... 1.75
- 32 in. long, 6 in. deep, 7 in. wide..... 2.25
- 38 in. long, 6 in. deep, 7 in. wide..... 2.75
- 44 in. long, 6 in. deep, 7 in. wide..... 3.50

Wyatt's Selected Hyacinths

The culture of Hyacinths is very easy. For early spring blooming out of doors the bulbs should be planted 5 inches deep. After planting give the beds a covering of well rotted leaves or litter, or well-rotted manure.

FOR POT CULTURE

Hyacinths are excellent for indoor growing. See that the pots are well drained and use the best soil possible. Plant the bulbs about an inch below the surface. Water thoroughly and put away in a dark cellar, or stand them out of doors and cover pot and all with about 8 to 10 inches of sand, dirt or ashes. Let them stand this way about 6 or 7 weeks or longer if necessary. The tops should be 4 inches before brought in the house to the light. If brought in sooner the Hyacinths will make short, inferior flowers. A 4-inch pot will hold a good sized single bulb, and a 6- to 8-inch pot will hold 3 to 5 bulbs.

YELLOW

Yellow Hammer. Pure yellow, beautiful truss, very recommendable; early.

City of Haarlem. Golden-yellow. Late.

King of the Yellows. Extra medium early.

DARK AND LIGHT BLUE

Grand Maitre. Deep lavender blue, medium.

General Van Der Heyden

Lavender with darker lilac shading, fine bells and well filled spike.

King of the Blues. Dark blue, compact truss; late.

Queen of the Blues. Azure blue, large spike, very beautiful.

WHITE

La Grandesse. The showiest pure white; fine bells; extra for exhibition; late.

L'Innocence. Pure white, large truss, the best all-around white Hyacinth; early.



L'Innocence Hyacinths.

French White Roman Hyacinths

Roman Hyacinths are fine to grow in pots for early bloom. Can also be planted out of doors. To have best results with Roman Hyacinths plant 4 to 6 bulbs in a 5 to 7 inch pot. Afterwards put these in a dark cellar or put them out of doors and cover them, pots and all, with about 8 inches of sand and let stand until tops are about 2 or 3 inches high. Then bring them in the house and they will soon bloom. 20c each, \$2.25 per dozen, post-paid. \$15.00 per 100.

EARLY PINK ROMAN HYACINTHS. First size bulbs (12 to 15 cm.). 15c each, \$1.50 doz., \$8.00 per 100.

EARLY LIGHT BLUE ROMAN HYACINTHS. First size bulbs (12 to 15 cm.). 15c each, \$1.50 per doz., \$8.00 per 100.



French Roman Hyacinths

RED AND ROSE

Gertrude. Rosy pink, large compact trusses; early.

Gigantea. Blush pink, compact; fine spike.

King of Roses. Salmon rose.

Lady Derby. Bright rose pink, very fine large spike, excellent for pot culture.

La Victoire. Bright glistering carmine rose, extra large spike; early.

Queen of the Pinks. Beautiful rosy pink, extra bells and long spike, late.

PRICES

Top Size Exhibition Bulbs—2 for 45c, \$2.00 per dozen, \$13.00 per 100.

First Size Bulbs—20c each, \$1.75 per dozen, \$11.50 per 100.

Second Size Bulbs—15c each, \$1.50 per dozen, 10.00 per 100.

Bedding Size Bulbs—2 for 25c, \$1.20 per dozen, \$7.50 per 100.

Double Hyacinths

Wonderful trusses of double flowers. Best planted out of doors. Mammoth bulbs in following colors: **Crimson, Dark Blue, Light Blue, White, Rose, Yellow, Pink, Mixed.** Price, 20c each, \$2.25 per dozen.

Miscellaneous Bulbs



Blue Grape Hyacinths.

MUSCARI

(Grape Hyacinth)

The foliage of this plant is very similar to that of Scilla, but the flowers are of an entirely different form—grapelike clusters closely set—and are wonderful cut-flowers. Always exquisite when naturalized.

Botryoides. Blue. 45c per doz., \$3.50 per 100, \$25.00 per 1,000.

Blue Bird. An immense improvement over the former variety, the flowers being twice as large and growing taller, and of a delightful heavenly blue. \$1.00 per doz., \$7.00 per 100, \$60.00 per 1,000.

Chionodoxa (Glory of the Snow)

One of our loveliest spring flowers, when established its sheets of blue in very early spring are a great attraction in borders, dotted over bulb beds, or massed on rockwork. Once planted it comes up year after year, the flower spikes increasing in size and beauty. Excellent in pots. Prices include postage.

Lucillae. Bright blue with large clear white center. Dozen 50c, \$3.00 per 100, \$22.00 per 1,000.

Sardensis. Intense deep blue. Dozen 60c, \$3.50 per 100, \$25.00 per 1,000.

OXALIS

Mixed Colors. 1 dozen 50c, \$3.25 per 100.

Ranunculus

The bulbs of Ranunculus resemble tiny clumps of dahlia roots. The flowers are extremely double, almost globular, regular in outline, often exceeds 2 inches in diameter. Dozen 75c, \$5.50 per 100.

LILY-OF-THE-VALLEY

Ready for Delivery in November

Lily-of-the-Valley. This well-known little favorite produces strong spikes about 15 inches high, bearing from 12 to 20 beautiful little bells of purest white which are delightfully fragrant. Strong, well developed Pips—Dozen \$1.00, 25 for \$1.90, \$6.50 per 100, postpaid. For outdoor planting, strong clumps, each 50c, dozen \$4.50.

AMARYLLIS HIPPEASTRUM

(Will Grow Outdoors in Our Climate)

Giant American Hybrid. There is nothing that will give the amateur greater pleasure for the window garden than these giant-flowering Amaryllis that are so easily managed. The strain we offer is the finest that has ever been produced in this country, strong bulbs throwing vigorous stems with from four to six gigantic blooms of the most perfect form, ranging in color from pure white grounds with varied markings of rose, red and crimson to the richest self colors as scarlet, crimson, bright red, cherry, and almost maroon. We can supply them in mixture only. Delivery from November until April. Large, strong bulbs. Each 60c, 10 bulbs \$5.00, 100 bulbs \$45.00.

SNOWDROPS (Galanthus)

Everybody knows the Snowdrops; with its little white bells coming through the snow very early in the spring—practically the first flower to show itself after the dreariness of winter. It is a wonderful bulb for naturalizing and for every garden.

Navalis (Single). 45c per doz., \$3.50 per 100, \$30 per 1,000.

Navalis (Double). 60c per doz., \$4.50 per 100, \$40 per 1,000.

SCILLA (Squills)

Scilla Campanulata. One of the prettiest bulbs. Blue, Rose and White. Dozen 60c, \$4.00 per 100.

Scilla Sibirica naturalize splendidly, are cheap and so can be planted liberally, and everyone who has a garden should provide for the time when they will be excluded.

Sibirica Blue. 55c per dozen, \$4.00 per 100, \$35.00 per 1,000.

Sibirica, Sky Blue. A trifle lighter blue than the former with large flowers of a most beautiful heavenly blue color. \$1.00 per dozen, \$7.00 per 100.



Lily of the Valley Growing in Prepared Fibre.

Send Us Your Order for Fruit Trees and Shrubs



Paper-White Grandiflora Narcissus.

FREESIAS

Freesia Purity. This charming flower is one of the most satisfactory bulbs that can be forced.

	Doz.	100	1,000
Selected Bulbs, 1/2 to 3/4 inch....	\$0.30	\$2.25	\$20.00
Mammoth Bulbs, Extra 3/8 to 1/2 in.	.50	3.75	33.75

General Pershing. Extra robust grower, 3 ft. in height, with 4 to 5 long side laterals, large open flowers of lavender pink, yellow lip and somewhat of a bronze cast. Dozen 85c, \$6.50 per 100, \$55.00 per 1,000.

POLYANTHUS NARCISSI

Bunch-Flowering

VARIETIES FOR EARLY INDOOR GROWING

Beautiful, free flowering, deliciously sweet-scented flowers of the easiest culture; suitable for forcing or for growing in water in the same way as the Chinese Sacred Lilies. Their tall spikes of bloom bear from 6 to 12 flowers each.

Grand Soleil d'Or This popular bunch-flowering variety of the Polyanthus type is as easy to grow in pebbles and water as in soil or Wyatt's Bulb Fiber. The flowers are a clear sunny yellow, with bright orange cups. \$1.50 per doz., \$11.00 per 100, \$100.00 per 1,000.

Paper-White Grandiflora. The popular, bunch-flowering pure white Narcissus, frequently having thirty individual blooms and splendid decorative foliage from a single bulb. We offer two sizes, each suitable for growing indoors in pebbles and water or in our Bulb Fiber.

	Doz.	100	1,000
First-Size Bulbs	\$0.60	\$4.75	\$45.00
Jumbo Bulbs75	5.50	50.00

Chinese Sacred Narcissus. The Chinese Joss Lily. For growing in pebbles and water; can also be grown in soil or fibre. **Mammoth Bulbs**—Each 20c, 2 for 30c, \$1.50 per dozen, \$11.00 per 100.

GLASS BOWLS, for one bulb of Chinese Lily. 35c each, \$3.50 per doz., for 6 bulbs, 50c each, \$5 per doz., not prepaid.

PEBBLES. Carefully screened and selected. Per quart box 20c, 2 boxes for 35c, not prepaid.

COLORLED BOWLS, green, blue, yellow, etc. 50c, 75c, \$1.00, \$1.25, and \$1.50 each.

GROW BULBS IN YOUR OWN HOME IN WYATT'S PREPARED BULB FIBRE

1 qt. 25c, 2 qts. 40c, 3 qts. 55c, 5 qts. 85c, 10 qts. \$1.50, postpaid.

OUTDOOR FALL BULB CULTURE

FOR OPEN-GROUND PLANTING.—Most of the suitable sorts should be planted in the fall, and they will flower the following season, commencing in March or earlier with Snowdrops, Crocus, etc., which are followed with Hyacinths, Tulips, Daffodils, and a host of other bulbous beauties.

TIME TO PLANT.—Remember that the "fall" is the time to plant all spring flowering bulbs. They

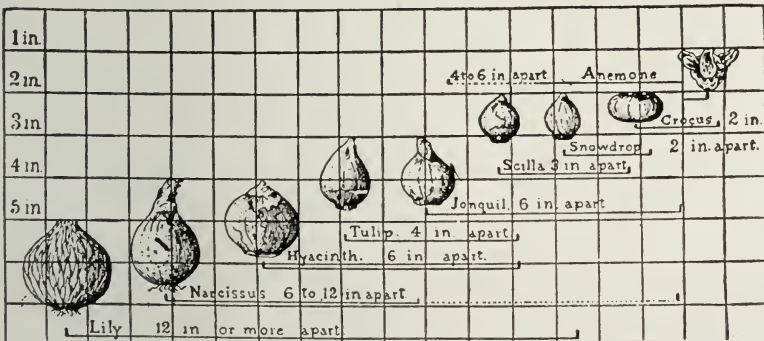
may be put in almost any time from October first until the ground freezes; in fact, we have succeeded with even later planting, but earlier planting brings best success.

HOW TO PLANT.—The soil should be well spaded, and the surface of the beds slightly raised at the center, so that no water will stand, but soak the bed good with water when first put in, then later if it

dries out. The soil will be better if enriched with well-rotted manure or bone dust.

AFTER TREATMENT.—All bulbs like a sunny exposure, and if protected from the north will bloom earlier. The bulbs do well for a number of years, without lifting or replanting. When through flowering the beds may be planted with shallow-rooted annuals, as nasturtiums, petunias, verbenas, etc. If necessary the bulbs may be taken up when the leaves begin to ripen, to be replanted the coming fall.

DIAGRAM SHOWING DEPTH TO PLANT OUTDOORS



Bulbs indoors do not require such deep planting as indicated in the diagram, there being no danger from freezing and thawing to guard against.

Hardy Garden Lilies



Regal Lily.

Lilium Myriophyllum (Regal Lily)

Probably One of the Best of the Newer Hardy Lilies for Our Carolina Soil and Climate.

A new and very rare Lily from China. The flowers are white, shading to yellow in the center, with a pink tinge on the outer edges. A strong grower, we have grown them 4½ feet tall with 12 blossoms on a stalk. It is deliciously scented, and its extreme hardiness makes it a valuable Lily for outdoor planting. June-July flowering. Each 30c, dozen \$3.25.

Tigrinum, Single. (Single Tiger Lily). Orange-red, spotted black. 25c each, \$2.40 per dozen, \$20.00 per 100. July flowering.

Tigrinum, Double (Double Tiger Lily). 25c each, \$2.40 per doz., \$20.00 per 100. July flowering.

CALLA LILIES

White Calla (Richardia Aethiopica).

The White Calla, or Lily of the Nile, is a well known plant of easy culture, and in Winter is one of our best window plants. To aid profuse blooming keep them dormant from the middle of June until the last of August; repot in good, rich soil, using 6 to 8 inch pot; give water, light and heat.

	Each	Doz.	100	
Selected Bulbs\$0.25	\$2.25	\$18.00	
Mammoth Bulbs30	3.25	24.00

Godfrey Everblooming. This is a great improvement over the ordinary white Calla. The flowers, while a trifle smaller, are of purer white and delicately scented. Strong flowering bulbs, each 25c, dozen \$2.40.

Yellow Calla (Elliothiana). The flowers are a magnificent deep golden yellow and the green foliage is spotted creamy white. Unquestionably the most beautiful of the Calla Lilies.

	Each	Doz.	100	
Select Bulbs\$0.25	\$2.50	\$18.00	
Extra Select Bulbs30	3.50	22.50

VARIETIES OF DUTCH ROMAN HYACINTHS
 Crimson (Garibaldi). Light Blue (Schotel).
 Rose Pink (Moreno). Deep Blue (Grand Maitre).
 White (Albertina). Mixed Colors.

Price, 10c each, 80c per doz., \$5.50 per 100.

We especially recommend deep planting, say, from 6 to 8 inches; varieties like Speciosums require at least 8 inches, with an ample amount of sand beneath the bulb to insure proper drainage.

For color, fragrance, beauty, and variety of form, nothing can equal these grand flowers; whether grown in pots or grouped in the hardy plant border, where their hardiness makes them so desirable, they are always an object of beauty.

Lily bulbs, being of late maturity, are not ready before November and December (the best time to plant them).

Candidum. Annunciation or Madonna Lily. Has been for a long time one of the most popular of the hardy garden Lilies. Has a clear, white flower with rich perfume. Plant outdoors where it will remain undisturbed for several years. 25c each, \$2.40 per doz., \$15.00 per 100, postpaid.

Lilium Auratum (the Gold-Banded

Lily of Japan). Flowers white, dotted crimson, with a clear golden band running through the center of each petal; very fragrant. A splendid lily for pots, or for planting out in the shrub or plant borders. Blooms in July. Mammoth bulbs. Each 50c, dozen \$4.75.

Speciosum. "Japan Lily." The varieties of this class are magnificent border plants, and also excellent for pot culture. All are perfectly hardy, and are among the most satisfactory Lillies to grow.

Speciosum Album. Pure white, very fragrant. Large Bulbs, 8 to 9 inches, each 50c, dozen \$4.75, \$35.00 per 100.

Lilium Speciosum Magnificum. Rich ruby-carmine, margined white, massive flowers, measuring fully 8 inches across the petals and carried on a strong stout stem with dark green leaves. This variety is by far the most magnificent in color, form and size of all the Speciosum Lillies. Mammoth size. 50c each, \$4.75 per dozen, \$45.00 per 100.

Speciosum Rubrum or Roseum.

White, suffused and spotted with crimson. Large Bulbs, 8 to 9 inches, each 35c, dozen \$3.50, \$27.50 per 100.

Superbum (Our Native Turk's Cap

Lily). Rich orange red petals, tipped red and dark spotted. 4 to 6 feet high. Blooms July and August. Each 25c, dozen \$2.25.

Set of 8 Hardy Garden Lilies, \$3.00



Lilium Speciosum Magnificum.

Wyatt's Old North State Sweet Peas

These are almost hardy enough to live out over winter and they make their best growth in the cool part of the season. The only way to have them last at all, once the hot weather comes, is to have them deeply rooted by that time. Frosts will not hurt them. Cultivate thoroughly, plant about ½ inch apart in rich ground; give plenty of water as soon as plants are up. Can be sown in the Fall, November being a good time.

**INOCULATE THIS
SEED WITH
STIMUGERM**

SPENCER or STANDARD SWEET PEAS

White

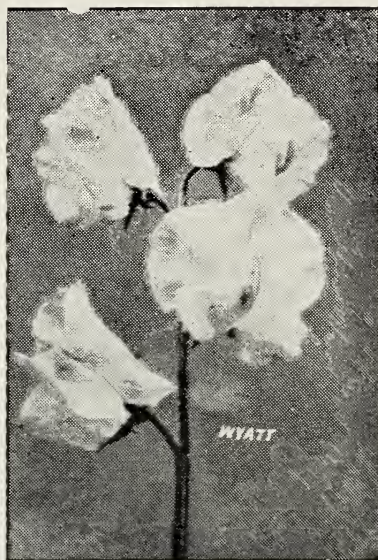
CONSTANCE HINTON. Large; white; black seeded.
WHITE SPENCER. (Re-selected). Pure white.
ETTA DYKE. White.

Pink Shades

ELFRIDA PEARSON. Light pink, with paler shadings.
HEBE. Large bright pink.
HERCULES. Clear pink; very large.
VALENTINE. Large blush pink.

Cream-Pink Shades

COMRADE. Cream pink, shaded apricot.
MARGARET ATLEE. Deep cream pink.
MATCHLESS. Lovely cream color.
MARY PICKFORD. Cream pink suffused with salmon.
PICTURE. Cream pink, suffused apricot.



Mary Pickford Sweet Peas.

Rose and Light Pink Bicolor

BLANCHE FERRY. Pink and white.
DRS. CUTHBERTSON. Giant; rose and light pink.

Primrose Shades

DOBBIE'S CREAM. Extra deep; selected stock.
WHAT JOY. Primrose yellow shading to cream.
YOUTH. White edged with a delicate soft rose pink.

Orange and Salmon Pink

HAWLMARK CERISE. Brilliant orange.
HAWLMARK SALMON PINK. Rose pink flushed deep salmon.
MISS CALIFORNIA. Salmon pink.
ROBERT SYDENHAM. Bright orange salmon.
TANGERINE IMPROVED. Salmon orange.
THE PRESIDENT. Brilliant orange.

Lavender Shades

ASTA OHN. Pinkish lavender.
AUSTIN FREDERICK IMPROVED. Giant lavender.
FLORENCE NIGHTINGALE. Large and fine rich lavender; great favorite.
F. R. FELTON. Exquisite, soft lavender blue with slight suffusion of rose. Flowers of largest size.

Price, all named Spencer Sweet Peas: Pkt. 10c; oz. 30c; ¼ lb. 75c; lb. \$2.50.

Red Shades

CAMPFIRE. Brightest scarlet.
CRIMSON KING. A rich deep crimson, the best red, does not burn. Oz. 30c; pkt. 10.
DOREEN. Large carmine.
FIERY CROSS. Bright red orange cerise.
KING EDWARD SPENCER. Large blood red.
MORSE'S SUNPROOF SCARLET. The brightest scarlet Sweet Pea.
ROYAL SCOT. Brilliant scarlet.

Maroon, Purple, Blue

BLUE MONARCH. Dark blue.
COMMANDER GODSALL. Violet blue.
CAPTAIN OF THREE BLUES. Purplish maroon standard and bluish wings.
GLENEAGLES. Immense pale blue lavender.
LORD NELSON or BRILLIANT BLUE. Deep navy blue.
MRS. TOM JONES. Deep amethyst blue, very fine form, the best of the deep blues.
OTHELLO. Deep velvety maroon. Best of the dark colored Spencers.
ROYAL PURPLE. Rich purple.
WARRIOR. Giant Maroon.

Spencer Mixed Sweet Peas

A very fine assortment of colors; including the best varieties. Pkt. 10c; oz. 25c; ¼ lb. 60c; lb. \$2.00, postpaid.

Wyatt's Special Mixture

No other sweet pea mixture can surpass "Wyatt's Special Mixture." Pkt. 10c; oz. 20c; ¼ lb. 50c; lb. \$1.50, postpaid.

Fancy Grandiflora Sweet Peas

DOROTHY ECKFORD. Best white of this type.
KING EDWARD VII. Crimson scarlet.
LADY GRISEL HAMILTON. The largest and lightest of lavender; standard light mauve, hooded form.
MRS. ROUTZAHN. Color buff, suffused yellow pink.
PRIMA DONNA. Lovely soft pink.

Price, all Grandiflora varieties: Pkt. 10; oz. 20c; ¼ lb. 50c; lb. \$1.50.

**INOCULATE THIS
SEED WITH
STIMUGERM**

Sow Perennial Flower Seeds in the Fall

For best results sow the seed in August, September or October, cover lightly through the Winter, and transplant in the Spring when the plants have made sufficient growth.

Perennial plants set out in the Fall make a wonderful root growth before Spring.

Larkspur

These handsome Larkspurs are very effective in borders and planted amongst shrubs. Sow seed in the open border either in early Spring or late Fall so germination may take place very early in the Spring.

STOCK FLOWERED

Ageratum Blue
Rose-Scarlet
Dark Blue
Dark Rose
Violet
Shell-Pink

Lustrous Carmine
(Newport Pink).

Plant some of the
new Larkspurs this
Fall.

Exquisite. Soft Pink.
very beautiful.
Flesh-Pink.
Lilac
Sky-Blue
White

Each of the above: $\frac{1}{8}$ oz. 25c; pkt. 10. Mixed, all colors. Oz. \$1.00; $\frac{1}{4}$ oz. 30c; pkt. 10.

WYATT'S SPECIAL MIXTURE. (Annual Larkspurs). A charming mixture containing all the bright and delicate shades. Oz. \$1.00; $\frac{1}{4}$ oz. 30c; pkt. 10c.

Delphinium—Perennial Larkspur

One of the Most exquisite blue-tinted flowers that we have.

MIXED CHINESE VARIETIES. This mixture contains a great variety of shades, from pure white to gentian blue. Pkt. 10c; $\frac{1}{4}$ oz. 35c.

BELLADONNA HYBRIDS. Lovely shades of blue. Pkt. 10c; $\frac{1}{4}$ oz. 80c.

GOLD MEDAL HYBRIDS. Pkt. 10c; $\frac{1}{8}$ oz. 40c.

Wyatt's Giant Strain Fancy Pansies

Plant Pansy Seed in the Fall for Best Results

Immense flowers; wonderful colorings. They require rich soil and quantities of water to do their best.

WYATT'S GIANT FANCY MIXED. A very fancy strain, all colors. Pkt. 10c; $\frac{1}{4}$ oz. \$1.00, oz. \$5.00.

LARGE FLOWERING MIXED. Many standard varieties. Pkt. 10c; $\frac{1}{4}$ oz. 50c; oz. \$2.00.

PANSY PLANTS in season. 50c per dozen, postpaid; \$3.50 per 100 by express. Seedlings. \$1.25 per 100.



Soft Pink.
Exquisite
Larkspur.

VIOLA CORNUTA (Tufted Pansies.) Pkt. 10c; $\frac{1}{4}$ oz. 75c.
COREOPSIS. Flowers are large, deep yellow, cup-shaped. Blooms all summer. Pkt. 10c. Strong Plants \$2.25 dozen.

Sweet William

Old-time hardy perennial with dense heads of many colored flowers.

DOUBLE MIXED, SINGLE MIXED ANNUAL VARIETY.

Each, pkt. 10c; $\frac{1}{4}$ oz. 35c.

NEWPORT PINK. Pkt. 10c;

$\frac{1}{4}$ oz. 35c.

ROSEUS. Pkt. 10c; $\frac{1}{4}$ oz. 35c.



Wyatt's Giant Fancy Mixed Pansies.

Poppies—Papaver

Very hardy and can be sown as early in the Fall as ground is in working order.

SHIRLEY MIXED. The very finest strain of single Poppies all colors, from white to deep scarlet. Pkt. 10c; $\frac{1}{4}$ oz. 25c; $\frac{1}{2}$ oz. 35c; oz. 65c.

Pure White American Legion.
Blue Shades. Orange scarlet.
Rose Pink. Shirley Scarlet.
Deep Apricot. Double Shirley Eldorado
Eldorado Salmon. Pink.

GOLDEN CALIFORNIA POPPY. Pkt. 10c, oz. 40c.
PEONY-FLOWERED. Very double and fine. All colors. Pkt. 10c; $\frac{1}{2}$ oz. 25c; oz. 45c.

ORIENTAL (Perennial). This is extremely hardy and once established lasts for years. It produces immense single scarlet flowers, 4 inches across in early summer, and makes a gorgeous display. Pkt. 10c; $\frac{1}{2}$ oz. 25c; oz. \$1.50.

LAMARCKIANA (Tall Evening Scented Primrose). Pkt. 10c; $\frac{1}{4}$ oz. 30c.

PRIMULA VULGARIS (Dwarf Common English Yellow Primrose or Cowslip). Pkt. 10c; $\frac{1}{8}$ oz. \$1.20; $\frac{1}{4}$ oz. \$2.00.

FOXGLOVE. Long, bell-shaped flowers, on stems 2 to 3 feet high; very showy. Pkt. 10c. Strong Plants \$2.25 doz.

HIBISCUS OR MALLOW. The plant grows 4 to 5 feet high, covered with single flowers 6 to 8 inches across, from pure white to deep rose in color. Pkt. 10c. Plants \$2.25 doz.

HOLLYHOCK. Shades of yellow, crimson, rose, pink, orange, white, etc. Pkt. 10c. Plants, \$2.25 dozen.

HARDY PINKS. Greatly varied in color and are deliciously fragrant. Pkt. 10c. Plants, \$2.25 dozen.

PERENNIAL PHLOX. They range from pure white to the richest crimson and purple, and from soft rose and salmon to bright coral-red, all having a delicate fragrance. Pkt. 15c. Plants \$2.25 doz.

STOKESIA CYANEA (Cornflower Aster). Grows from 18 to 24 inches high; lavender-blue, centaurea-like blossoms, which measure from 4 to 5 inches across. Pkt. 10c.

SHASTA DAISY. Large white flowers increasing in beauty each year. Pkt. 10c. Strong plants, \$2.25 doz.

1930

JOB P. WYATT & SONS CO.

Established 1881

RALEIGH, NORTH CAROLINA

"The Leading Seed House of the Carolinas"

Forwarded by { State on this line whether wanted }
 { by Mail, Express or Freight }

Your Name

Post Office **R. F. D. No.**

County **State**

Street **P. O. Box**

Express or Freight Office { if different }
 { from P. O. / }

Date....., 193.....

State Amount Enclosed	
Post Office Order	\$.....
Postal Note
Express Money Order
Bank Draft
Cash, Notes and Silver
Postage Stamps
Total	\$.....

While we exercise the greatest care in selecting our Seeds, Bulbs and Plants, we cannot give any guarantee as to growth of same. If the purchaser does not accept the goods on these terms they are at once to be returned.

Quantity	ARTICLES WANTED	Price
	Do not forget to order perennial and annual flower seeds for Fall sowing. (12—10c pkts. 75c)	
	IRIS COLLECTION Extra Special—100 Blooming size roots. 10 Varieties, \$6.00 Delivered.	Amount Carried Forward

Quantity	ARTICLES WANTED	Price
	Amount Brought Forward	

Indestructo Metal Plant and Tree Labels



No 62
1 1/8 x 3 1/2 inches
\$3.25 per doz.



No. 51
8 inches
\$1.75 per 100

No. 52
10 inches
\$2.00 per 100

No. 53
15 inches
\$2.50 per 100



No. 1
3/4 x 3 3/4 inches
\$1.35 per 100

No. 2
1 1/8 x 5 inches
\$1.75 per 100

Tree Labels

Copper-wired. 3/2-inch wood; for trees, shrubs and plants. 60c per 100; \$4.50 per 1000.

Pot Labels

Wood Painted			
	Per 100		Per 100
4-inch	\$0.40	8-inch	\$1.25
5-inch	.50	10-inch	1.50
6-inch	.60	12-inch	1.90

Hot Bed Mats, Sash and Glass

HOTBED MATS. Burlap covered, 40 x 76 size, covers one sash. \$2.00 each; 76x76 covers two, \$3.25 each. Price subject to change. Express or freight.



HOTBED GLASS. Box of 90 panes, 8 x 10, \$4.75; 60 panes, 10 x 12, \$4.75. We can also supply 6 x 8 glass. Price subject to change. Express or freight.

HOT BED SASH. Made to hold either 24 or 28 8 x 10 panes. These the panes slide in and butt one against the other. \$2.65. Price subject to change.

sashes are grooved so that butt one against the other. change. Express or freight.

Please write below the names and addresses of a few of your friends who are interested in and Buyers of Bulbs, Seeds, and Plants

Name	Post Office	County	State

PLEASE DO NOT WRITE IN THIS SPACE

Route Shipped by..... Date Shipped.....

In.....Pkgs.,Bundles,Boxes,Crates,Baskets,Bbls.

Laid Out by..... Checked by..... Reply Required by.....

Wyatt's Tested Garden Seed for Fall Planting

Broccoli

EARLY WHITE CAPE. The heads are white, compact and hard, and it is a hardy, vigorous, and easily grown sort. Pkt. 10c; ½ oz. 35c; oz. 65c.

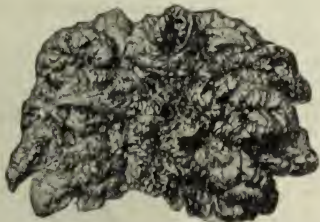
BROCCOLI SALAD, or SPROUTING. This variety has become very popular in the Eastern part of North Carolina. It is planted in the fall, and in growth somewhat resembles the Seven Top Turnip. In the spring it sends up sprouts, which are cut and bunched for market. Try some without fail; it is a good yielder and of excellent quality. Culture—Same as for turnips. One ounce is sufficient for 100 feet of drill, 1½ to 2 pounds to an acre. Something comparatively new, that will meet with approval. Pkt. 10c; oz. 15c; ¼ lb. 50c; lb. \$1.50, postpaid.



Italian Green Sprouting Broccoli.

ITALIAN GREEN SPROUTING. An imported strain that may be sown from July 1st until November 1st. In habits and culture it is similar to cauliflower and forms a good sized center head with from four to six heads which can be cut later. When cooked it has a delicious flavor. Pkt. 10; oz. 50c; ¼ lb. \$1.75; lb. 6.50, postpaid.

	Pkt.	Oz.	¼ lb.	Lb.
Cabbage, Early Jersey Wakefield	.10	.25	.75	2.25
Charleston Wakefield	.10	.25	.65	2.25
Early Flat Dutch	.10	.25	.60	2.25
Early Drumhead	.10	.25	.60	2.25
Copenhagen Market	.10	.25	.75	2.65
Henderson's Succession	.10	.25	.65	2.25
All Season	.10	.25	.65	2.25
Chinese Pe-Taai	.10	.25	.75	2.25
Carrot, Chantenay	.10	.15	.35	1.00
Danvers Half Long	.10	.15	.35	1.00
Kale, Siberian Curled	.10	.15	.30	.75
Green Curled Scotch	.10	.15	.30	.75
Mustard, Southern Giant Curled	.10	.15	.25	.60
Chinese Broad Leaf	.10	.15	.25	.60



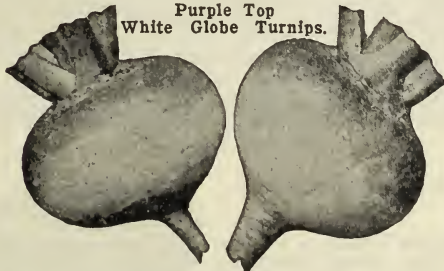
Norfolk Savoy or Bloomsdale Spinach

Lettuce

MORSE'S No. 5084 SPECIAL STRAIN NEW YORK IMPROVED. Also called "Los Angeles" and "Wonderful." Produces immense heads 15 to 18 inches across, and as solid as a cabbage. Blanches beautifully. The largest heading Lettuce of all. This is the so-called "Dark Iceberg" of commerce, but not the true Iceberg. It frequently weighs 2 or 3 lbs. The heart is very solid, of pleasing light green color. The leaves are large and crumpled. As an example of its "standing" properties, perfect Lettuces were cut from the same bed for upwards of seven weeks. For an outdoor all season variety it stands unrivaled. Pkt. 10, ½ oz. 15c, oz. 25c, ¼ lb. 75c, lb. \$2.25. Write for quantity prices.

	Pkt.	Oz.	¼ lb.	Lb.
Lettuce, Wayahead	.10	.25	.50	1.25
Big Boston	.10	.15	.45	.90
Iceberg	.10	.20	.50	1.40
Parsley, Champion Moss Curled	.10	.15	.40	1.00
	Pkt.	Lb.	10 lbs.	
Peas, Thomas Laxton	.10	.30	1.75	
Alaska	.10	.30	1.50	
Write for quantity prices.				
	Pkt.	Oz. <td>¼ lb.</td> <td>Lb.</td>	¼ lb.	Lb.
Radish, Rose China Winter	.10	.15	.25	.85
Chinese or Celestial Winter	.10	.15	.25	.85
Spinach, Norfolk Savoy or				
Bloomsdale	.05	.10	.25	.40
Long Standing	.05	.10	.25	.40

Purple Top White Globe Turnips.



Turnip, Extra Early White Milan	.05	.10	.25	.65
E. E. Purple Top Milan	.05	.10	.25	.65
Early White Flat Dutch	.05	.10	.25	.65
Red or Purple Top				
Strap Leaf	.05	.10	.25	.65
Purple Top Globe	.05	.10	.25	.65
Long White Cowhorn	.05	.10	.25	.65
Large White Norfolk Globe	.05	.10	.25	.65
Pomeranian White Globe	.05	.10	.25	.65
Purple Top Yellow				
Aberdeen	.05	.10	.25	.65
Golden Ball or Orange				
Jelly	.05	.10	.25	.65
Southern Prize	.05	.10	.25	.65
Seven Top	.05	.10	.25	.65
Ruta Baga, Improved Purple Top				
Yellow	.05	.10	.25	.65

Morse's No. 5084
Strain of New
York, or
Los Angeles.



Wyatt's Evergreen Mixed Lawn Grass

In the South we often have trouble in getting good lawns because it has been found that no one grass will give satisfactory results at all seasons and on all soils. By careful experiments we have succeeded in getting a combination of grasses that will produce an evergreen lawn, giving permanency and beauty of sward. By the use of Wyatt's Evergreen Mixed Lawn Grass Seed a rich, velvety lawn can be made and maintained. One pound will sow a space of 10 by 25 feet or 250 square feet; 75 to 90 pounds to an acre. Lb. 50c; 5 lbs. at 45c per lb.; 10 lbs. or over at 40c per lb.; 25 to 50 lbs. at 38c per lb.; 100 lbs. at 35c per lb. By mail, postpaid, lb. 50c.



Planting of Wyatt's Evergreen Lawn Grass.

Flower Pots and Saucers

Special Prices to Florists Using Large Quantities

Charge will be made for packing at 25c for orders amounting to \$2.50 or less. On larger orders, add 10 per cent to amount of order. This barely covers the cost. We pack carefully, but will not be responsible for breakage.



Standard Pots

Diameter	Each	Doz.	100
2 inches	\$0.05	\$ 0.30	\$ 1.75
4 inches	.10	.60	4.00
5 inches	.15	1.10	7.50
6 inches	.25	2.25	15.00
7 inches	.35	2.90	20.00
8 inches	.40	3.50	25.00
10 inches	.60	6.50	50.00
12 inches	1.20	12.75	98.00
14 inches	1.65	19.20	131.00

Shallow Pots

Similar to the ordinary flower pot, but shallower, being only 4 1/2 to 5 inches deep. Just the thing for bulbs, ferns, etc.

Prices same as Standard Pots.

Saucers

Diameter	Each	Doz.	100
3 inches	\$0.04	\$0.40	\$ 3.00
5 inches	.06	.55	3.60
6 inches	.10	1.00	6.50
8 inches	.15	1.40	9.75
10 inches	.25	2.40	16.75
12 inches	.35	3.25	24.00
14 inches	.40	4.50	35.00

Dunham Water-Weight Rollers

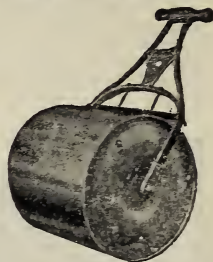
All Dunham Rollers are painted green on body and ends, with red handles, and always bear the name Dunham. Rollers weigh 50 per cent more when filled with sand. Water is more convenient.

WITH ROLLER BEARINGS

Nos.	5	7	9
Diam.	18 in.	24 in.	24 in.
Length	24 in.	24 in.	32 in.
Weight, Empty	85 lbs.	110 lbs.	130 lbs.
Filled, water	265 lbs.	420 lbs.	565 lbs.
Each	\$20,	\$23,	\$26.

WITH PLAIN BEARINGS

Nos.	2	4
Diam.	14 in.	18 in.
Length ...	24 in.	24 in.
Weight, Empty ..	68 lbs.	82 lbs.
Filled, Water ..	175 lbs.	265 lbs.
Each	\$13.50	\$16.00



Adco

Converts leaves, straw and refuse into artificial manure. 25-lb. bags, \$2.25; 100 lbs. \$8.00; 150 lbs. \$11.50. Send for special circular.

Vigoro, a Swift product, is a complete plant food for vegetable and flower gardens, lawns, pot plants, shrubbery and trees. It gives the plants and grass a good start and keeps them in vigorous condition. The first application should be at the rate of 4 lbs. to 100 sq. feet; for later applications, use half this quantity. 12 oz. 10c; 5 lbs. 50c; 25-lb. bag \$1.75; 50 lbs. \$3.00; 100 lbs. \$5.00. All prices f. o. b. Raleigh.



Fertilizers

SHEEP MANURE (Pulverized)

A pure natural manure, unequalled for mixing with potting soil, for lawns, general vegetable and flower gardens or for making liquid manure. 2 lb. pkg. 20c; 5 lbs. 40c; 10 lbs. 65c; 25 lbs. \$1.00; 50 lbs. \$1.75; 100 lbs. \$3.25; 500 lbs. \$15.00; 1000 lbs. \$26.00; ton, \$50.00.

CATTLE MANURE. Same price as Sheep Manure

PURE BONE MEAL

Excellent for rose culture and lawns. It decomposes rapidly and is quickly effective. Should be applied at the rate of 400 to 500 pounds to the acre 10 lbs. 60c; 50 lbs. \$2.50; 100 lbs. \$4.25; 200 lbs. \$8.00; 500 lbs. \$18.00; 1000 lbs. \$34.00; 2000 lbs. \$65.90.

NITRATE OF SODA

Fifteen per cent nitrogen, equivalent to over 18 per cent ammonia. Lb. 15c; 5 lbs. 40c; 10 lbs. 75c; 25 lbs. \$1.50; 50 lbs. \$2.50; 100 lbs. \$4.50. Write for quantity prices.

Strawberry Plants

Prices of Strawberries—By mail, postpaid: \$1.25 per 100, \$7.50 per 1,000. By express, \$1.00 per 100, \$6.50 per 1,000.

KELLOGG'S PREMIER BRANDYWINE BIG JOE KLONDYKE GANDY IUPTON'S LATE MISSIONARY, ETC.

EVERBEARING STRAWBERRY. (Progressive Everbearing). The best variety. Price, 25 for 75c; 50 for \$1.25; 100 for \$2.50; 500 for \$10.00; \$17.50 per 1,000.

Use **FRAIM'S TREE DRESSING** and give your trees a chance to live their natural life. 1 qt. \$1.00; 1 gallon \$3.00; 5 gallons \$14.75.

Lime for garden, lawns, and farms, 75c per 100 lbs.; \$12.00 per ton. Special price on large lots.

PREMIER BRAND PULVERIZED POULTRY MANURE. 10 lbs. 65c; 25 lbs. \$1.00; 50 lbs. \$1.75; 100 lbs. \$3.25; 500 lbs. \$15.00.

Celery Plants

GOLDEN SELF-BLANCHING AND OTHER VARIETIES. 75c per 100, \$6.00 per 1,000.

CAULIFLOWER PLANTS. 75c per 100, \$6.00 per 1,000.

COLLARD PLANTS. 25c per 100; \$2.25 per 1,000.

FLOWER PLANTS AND BULBS. All varieties. Send list for prices.

LETTUCE PLANTS. Best varieties. 30c per 50; 50c per 100; \$4.00 per 1,000. Quantity prices on request.

Cabbage Plants

We can supply these throughout the winter and spring season.

VARIETIES: Early Jersey Wakefield, Charleston, Large Type Wakefield, Succession, Early Flat Dutch, Copenhagen Market and other varieties.

Prices by parcel post, postage paid, 50c per 100; 200 or more at 35c per 100. By express, buyer paying charges, 1000 to 4000 at \$2.50 per 1000; 5000 to 8000 at \$2.40 per 1000; 10,000 and over at \$2.25 per 1000. Write or wire for quantity prices. Terms, cash with order.

Asparagus Roots

	Doz.	100	1000
Palmetto (Green Stalks)	\$0.30	\$1.40	\$10.00
Washington (Dark Green Stalks)....	.50	2.00	15.00

If wanted by mail add 10 to doz.; 15c to 100; 35c per 1000.



Missionary Strawberries.

Perennial Flower Plants

Most satisfactory for permanent flower borders.

Partial list of what we can supply:

- ACHILLEA Roseum.** Hardy; good for this climate.
- ACHILLEA FL. PL., The Pearl.**
- ALYSSUM, Goldentuft.**
- ANCHUSA.** Light blue, 4-5 ft.
- AQUILEGIA, Columbine.**
- ASTERS.** Hardy.
- CANTERBURY BELLS.** Mixed.
- DIANTHUS, or HARDY PINK.**
- DIGITALIS, or FOXGLOVE.** All colors.
- IBERIS.** Hardy Candytuft.
- DWARF BLUE PHLOX.**
- FUNKIA.** Plantainily.
- HELIANTHUS, Hardy Sunflower.**
- LUPINUS.** Mixed colors.
- LEMON LILY.** Fragrant yellow flowers.
- PHLOX.** Separate colors. Majestic spikes of color.
- PHYSALIS, Chinese Lantern Plant.**
- RUDEBECKIA, or GOLDEN GLOW.**
- SWEET WILLIAM.** All colors, including Newport pink.

Prices, all varieties, 20c each, \$2.25 per dozen. Send us your perennial list for quotation. We usually can supply all varieties, including named Phlox.

Onion Sets

The following varieties of Onion Sets are the best to plant in the fall.

EGYPTIAN, or RED PERENNIALS. These we sell largely in the fall. Planted then, they produce very early green onions. Pt. 20, qt. 35c, 1/2 pk. 65c, pk. \$1.00, bu. \$3.50.

SILVERSKIN. Lb. 25c (postpaid 35c) 5 lbs. 85c, 10 lbs. \$1.50.

YELLOW DANVERS. Lb. 25c (postpaid 35c), 5 lbs. 85c, 10 lbs. \$1.50.

RED WETHERSFIELD. Lb. 25c (postpaid 35c), 5 lbs. 85c, 10 lbs. \$1.50.

EXTRA-EARLY WHITE PEARL. Recommended for fall planting. Lb. 25c (postpaid 35c), 5 lbs. 85c, 10 lbs. \$1.50.

CRYSTAL WHITE WAX BERMUDA SETS. Lb. 30c, 8 lbs. (peck) \$1.75, postpaid. By express, not prepaid, 32 lbs. (bushel) \$4.00.

YELLOW BERMUDA SETS. Lb. 25c, 8 lbs. (peck) \$1.25, postpaid. By express, not prepaid, 32 lbs. (bushel) \$3.75.

WHITE MULTIPLIER and YELLOW POTATO SETS in season. Truckers write for quantity prices on Onion Sets.

NEW JAPANESE BUNCHING ONION. 50c per oz. Wonderful. Try some.



Onion Sets.

Wyatt's Pure Grass Seed

CANADA BLUE GRASS (*Poa compressa*). Useful for sowing on hardy clay and poor soils. Weight 14 lbs per bushel. Lb. 45c, 10 lbs. \$3.75, 100 lbs. \$26.00

CRESTED DOGTAIL (*Cynosurus cristatus*). 30 pounds to the acre. Lb. 55c, prepaid. Not prepaid, bu. (21 lbs.) \$8.40, 100 lbs. \$33.00.

ENGLISH RYE GRASS, PERENNIAL RYE (*Lolium perenne*). Sow 60 pounds to the acre. Lb. 30c, prepaid. Not prepaid, bu. (24 lbs.) \$4.50, 100 lbs. \$15.00.

ITALIAN RYE GRASS (*Lolium italicum*). Valuable for pasture mixtures. 50 lbs. to the acre. Lb. 25c, prepaid. Not prepaid, bu. (18 lbs.) \$2.70; 100 lbs. \$12.00.

KENTUCKY BLUE GRASS (*Poa pratensis*). Sow 35 to 40 pounds to the acre. Lb. 45c, prepaid. Not prepaid, lb. 45c, 10 lbs. at 38c per lb., 100 lbs. at 30c per lb.

MEADOW FESCUE (*Festuca pratensis*). English Blue Grass or Sweet Grass. Sow 40 pounds to the acre. Lb. 35c, prepaid. Not prepaid, bu. (22 lbs.) \$4.40, 100 lbs. at 18c per lb.

ORCHARD GRASS (*Dactylis glomerata*). One of the most valuable of the pasture grasses. Sow 3 bushels to the acre. Lb. 30c, prepaid. Not prepaid, bushel (14 lbs.) \$3.50, 100 lbs. \$21.00.

PACEY'S IMPROVED SHORT RYE GRASS. Superior for lawn purposes. Sow, if alone, 50 to 60 pounds per acre. Lb. 35c, prepaid. Not prepaid, 10 lbs. or more at 25c per lb.

RED or CREEPING FESCUE (*Festuca rubra*). For lawns it is unsurpassed and should be included in all shade mixtures. Lb. 60c, 10 lbs. \$5.50, 100 lbs. \$40.00.

RED TOP or HERD'S GRASS (*Agrostis alba*). Sow 3 to 4 bus. per acre for lawns; for pastures, 1½ to 3 bus. per acre. Lb. 45c, postpaid. Not postpaid, 10 lbs. \$4.00, sack of 50 lbs. \$12.50, 100 lbs. \$19.00.

RHODE ISLAND BENT (*Agrostis tenuis*). One of the best grasses for lawns. Weight 14 lbs. per bushel. Lb. \$1.25, 10 lbs. at \$1.15 per lb., 100 lbs. at 95c per lb.

TALL MEADOW OAT GRASS (*Avena elatior*). Sow 50 pounds to the acre. Lb. 30c, prepaid. Not prepaid, bu. (10 lbs.) \$2.50, 100 lbs. \$21.00.

TIMOTHY (*Phleum pratense*). Thrives best on heavy, moist soils; should not be sown on light, dry land. Lb. 20c, 10 lbs. at 15c per lb., bu. (45 lbs.) \$4.50.

Pasture and Grass Mixtures

WYATT'S DEPENDABLE GRASS MIXTURE No. 1, FOR HAY or PASTURE. Recommended for light, loamy or medium upland, for either hay crop or grazing purposes. Composed of Orchard Grass, Perennial Rye Grass, Tall Meadow Oat Grass, Red Clover, Alfalfa, etc. Sow 30 to 35 lbs. to the acre. Lb. 35c, 10 lbs. at 30c per lb., 100 lbs. \$24.00.

WYATT'S DEPENDABLE GRASS MIXTURE No. 2, FOR HAY or PASTURE. Recommended for stiff, heavy or low lands. Composed of Kentucky Blue Grass, Alsike Clover, Herd's Grass, White Dutch Clover, Meadow Fescue, etc. Sow 30 to 35 lbs. to the acre. Lb. 35c, 10 lbs. at 30c per lb.; 100 lbs., \$24.00.

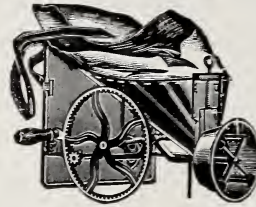
Prices subject to market changes. Ask for our current farm seed prices, stating quantities wanted.

Dwarf Essex Rape

Makes Splendid, Nutritious Pasturage for Cattle, Sheep, Hogs and Poultry

Highly recommended for pasturage for cattle, sheep, and hogs, furnishing most rich and nutritious pasturage within six to eight weeks. The fattening properties of Rape are said to be much better than those of clover. It also makes splendid green feed for poultry. Rape is best sown in drills, at the rate of 3 to 5 pounds per acre, or it can be broadcast, when 10 lbs. per acre should be used. Lb. 25c, 5 lbs. at 18c, 10-lb. lots and over at 16c per lb., 50-lb. lots and over at 14c per lb., 100 lbs. \$12.00.

Cahoon Seed Sower



Will sow any kind of seeds that are to be sown broadcast, and will do it better than you can by hand; much faster and more evenly. You can average 4 to 6 acres an hour with a Cahoon. No experience necessary; just follow directions. \$5.00, prepaid. Not prepaid, \$4.75.

GARDEN BOOKS

The Book of Shrubs, by Hottes.....\$3.15
 Wayside Marketing, by Arnold..... 1.65
 Practical Vegetable Culture, by Wilkinson.. 2.15
 Foundation Planting, by Johnson..... 3.65
 The Book of Perennials, by Hottes..... 1.65
 The Complete Home Landscape, by Jennings. 2.65

1001 GARDEN QUESTIONS ANSWERED By Prof. Alfred C. Hottes

A unique guide book of garden operations for each day, answering thoroughly and in an easily understood manner over 1,000 questions on the growing and care of flowers, fruits, vegetables, trees, shrubs, lawns, etc.; in fact every phase of home gardening. 320 pages, well illustrated and carefully indexed. Paper, \$1.65; cloth, \$2.10.

For complete list and descriptions write for our book leaflet.

HOME VEGETABLE GARDENING FROM A TO Z

A valuable book by Adolph Kruhm. The discussion of each vegetable is practical and complete from sowing seeds to what kinds to grow in different soils and sections. About 300 pages, more than 200 photographic reproductions, and 32 four-color illustrations. Bound in cloth, \$2.00, postpaid.



More Live Stock and Pastures Will Help Southern Farms and Farmers

Our 1931 Garden Guide will be ready in January—Order Your Free Copy Today.

Wyatt's Selected Seed Grain

(Prices Subject to Market Changes)

Beardless Barley

BEARDLESS. A wonderful hardy feed crop. Bushel \$2.50, 5 bus. at \$2.25. Write for quantity prices.

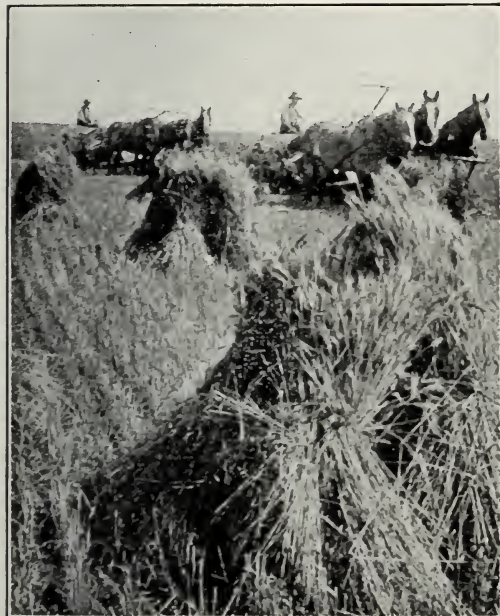
SELECTED SEED OATS

Virginia Gray Winter or Turf Though a winter oat, it also succeeds well if sown in the spring, making surest crop if sown by March 15. Sow 1/4 to 2 bushels to the acre. Bushel \$1.50, 10 bus. at \$1.40.

Red Rust-Proof. A very desirable early variety for heavy soils and low, moist grounds where rust attacks other varieties. Yields abundantly of large heavy grain. Sow 2 bushels to the acre. Present price, bushel \$1.10, 5 bus. \$5.00, 25 bus. at 95c per bus.

Appler. An early, large red Oat, similar to the Rust-Proof, but is hardier and yields more grain. Present price, bus. \$1.20, 10 bus. at \$1.10.

Fulghum. Our Fulghum Oats are Carolina grown from the very best seed stock. They are extra heavy and will produce a great crop of grain and feed. Present price, bushel \$1.20, 5 bus. \$5.50, 10 bus. at \$1.00, 50 bus. at 95c.



Leap's Prolific Wheat.

SEED WHEAT

Our seed wheat is selected for this section of the country, and if planted on land that will make a good corn crop, a favorable yield will be assured.

Leap's Prolific. A variety largely grown in the Piedmont Section.

Purple Straw. The old reliable sort for Wake County and Eastern Carolina.

Red May. Medium grain, very prolific.

Fultz. Large head, very free from disease.

Prices, 1/2 pk. 40c, 1 pk. 75c, bushel \$2.40.

Write for special prices in quantity lots. Sack lots at \$2.20 per bushel.

(While we only list Smooth or Beardless varieties we can supply the Bearded sorts on special order.)



Wyatt's Abruzzi Rye (Selected Strain)

SEED RYE

Wyatt's Selected Strain Abruzzi Rye.

Best for winter and early spring grazing. This variety was brought to this country some years ago by the U. S. Department of Agriculture from Italy and is ideally adapted to the South. It is said to be fully a week or ten days earlier than ordinary rye and to yield almost twice as much per acre. It stools quicker and heavier and provides double the grazing. Can be pastured fully a month before other varieties. Peck 75c, bushel \$2.25, 5 bus. at \$2.20.

Southern Rye. Bushel \$2.00, 5 bus. at \$1.90.

Winter Rye. Bushel \$1.85, 5 bus. at \$1.80.

Rosen Rye. Finest Michigan grown. Bushel \$1.90. Write for quantity prices.

Prevent Smuts With

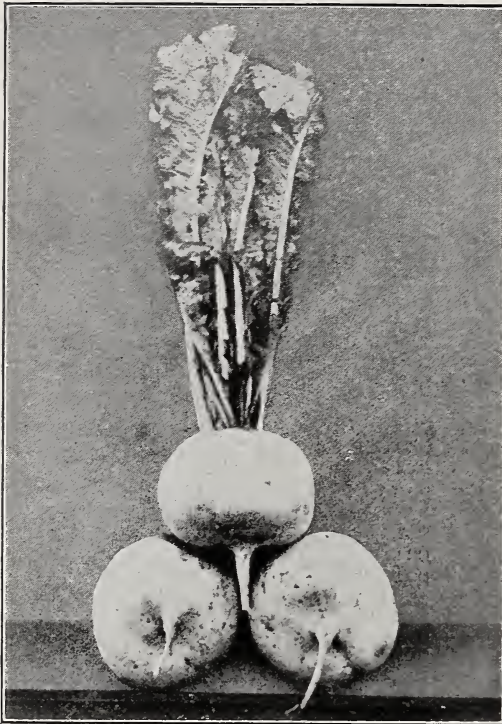
CERESAN



Stop your grain losses from smut by treating your seed with Ceresan before sowing. Ceresan controls such destructive diseases as bunt or stinking smut of wheat and loose and covered smuts of oats. Use it, too, to prevent seedling blight caused by scab infection of the seed. Use only 2 oz. per bushel of wheat, 3 oz. per bushel of oats.

Easy to apply. Does not corrode or clog drill.
 8 oz. \$0.50 5 lbs. \$3.00
 1 lb.75 25 lbs. 12.50
 100 lbs. \$49.00
 For Seed Wheat—Seed Oats

Treat your wheat with Formalin or Blue Stone.
COPPERCARB FOR TREATING SEED WHEAT AND GRAIN. 5 lb. package \$2.25.



Sakata's Foliage Turnip.

SAKATA'S FOLIAGE TURNIP (Dry Weather Type). The best for southern planting. The tops, which are carried upright, giving the plant unusual resting qualities against insect pests, are mild in flavor and of extremely tender texture. Most desired by canners. The root is pure white, globe shaped, tender and mild. Pkt. 10c, oz. 15c, ¼ lb. 40c, lb. \$1.40.

MUSTARD SPINACH. We believe that this tender fast growing Mustard, so similar to Spinach is destined to become a most important Market Vegetable. It can be planted throughout the entire season and is ready for the market in about three weeks. Pkt. 10; oz. 15c; ¼ lb. 35c; lb. \$1.15.

Paradichlorobenzene
(Paracide)

FOR PEACH TREE BORERS

Apply in September and October, also in Spring. 1 lb. 50c, 5 lbs. \$2.25, 10 lbs. \$4.00, \$25 lbs. \$8.75, 75 lbs. at 30c, 100 lbs. at 27½c.

SPRAY PUMPS, GARDEN TOOLS, GARDEN FURNITURE, INSECTICIDES. Send for special catalog and prices.

Copper Sulphate (Blue Stone or Blue Vitriol). Used for early spraying and in making Bordeaux Mixture, also for treating seed wheat. Will keep indefinitely. Special prices quoted on large quantities. By express, 1 lb. 20c, 10 lb. lots at 18c per lb., 50 lb. lots at 15c per lb.



Superior House Plant Food

A wonderful food for ferns and plants. 25c, 50c and \$1.00 boxes.



Legume Inoculator PRICES

Vetch and Austrian W. Peas

Size	Retail
½ bu.....	\$.30
1 bu.....	.50
3½ bu.....	1.40
5 bu.....	1.75

Soy Beans and Cow Peas

Size	Retail
1 bu.....	\$.40
2 bu.....	.70
5 bu.....	1.50
10 bu.....	2.50

Alfalfa, All Clovers, Peas, Beans

¼ bu.....	\$.40	1 bu.....	\$1.00
½ bu.....	.60	5 bu.....	4.75

Always state kind of seed — Legumes only

Legume Inoculators Must Be Fresh!

Legume Germs are perishable. To protect the farmer as well as the Dealer against undated inoculators, which may be old and worthless, NITRAGIN—for many years—has DATED its labels to guarantee fresh, live legume germs each year. Every NITRAGIN Dealer is granted the annual exchange privilege.



All legume germs need air and moisture to remain fresh and active. In the preparation of NITRAGIN, pure cultures, selected and tested strains of legume germs only, are mixed with a finely ground black soil-like substance, and packed in ventilated tins. This keeps NITRAGIN in a moist healthy condition.

Treat Your Bulbs With SEMESAN



2 oz.....	\$0.50.
1 lb.....	\$2.75
5 lbs.....	\$13.00

(Not mailable.)

SEMESAN PREVENTS DISEASES
Excellent for all Vegetable and Flower Seeds

Guard against diseases which may rot your bulbs or retard their growth and vigor. Cleanse them of harmful disease organisms by treating with Semesan before you plant this fall. Especially effective against tulip blight and narcissus root rot. Simply soak in easily made Semesan solution. Directions with each package. Give your crocus, hyacinth, jonquill, narcissus and tulip bulbs this disease protection.

JOB P. WYATT & SONS CO. gives no warranty, express or implied, as to description, quality, productiveness or any other matter of any seeds, bulbs or plants they send out, and will not be in any way responsible for the crop. If the purchaser does not accept the goods on these terms, they are at once to be returned.

POP CORN FOR POPPING. Lb. 12c; 5 lbs. 55c; 10 lbs. \$1.10; 100 lbs. \$10.00. If wanted by mail, add 5c per lb. for postage.

CORN POPPERS. 15c, 25c and 50c, each. Postage 10c extra.



What B-K Does for the Farmer and Why

It destroys at once on contact the germs of disease and loss in live stock and poultry and the bacteria that contaminate and spoil milk and other dairy products.

It helps to prevent diseases of live stock and poultry, thus adding profits.

It helps to produce highly pure milk and cream and more of it—makes the pay check bigger.

It is Clean—Can be used anywhere. Leaves things clean, purified, odorless. Leaves no odor of itself to contaminate.

10 oz. bottle\$0.60 1 gal.\$3.00
 1 qt.1.25 5 gals.12.50

Electric Non-Kinkable Hose



ELECTRIC GARDEN HOSE. 25 ft. \$4.25, 50 ft. \$8.50, including all couplings.



BLACKSNAKE GARDEN HOSE. 5/8 inch. 25 ft. \$3.25; 50 ft. \$6.25, with standard couplings.

Spray Hose, Couplings, Washers, Repair Parts and Supplies, Lawn Sprinklers from 50c up.

NARCISSI in Mixture for Naturalizing

We offer a mixture of many delightful types and colors. This mixture is particularly good for naturalizing in the perennial borders, terraces or on the lawn. For best results plant in masses and leave undisturbed. 65c per doz.; \$4.50 per 100; \$40.00 per 1000.

Special CROCUS Mixture

We offer a very fine assortment, containing a wide range of colors and shades. 35c per doz.; \$2.50 per 100; \$23.00 per 1000.

Hyacinths by Color—Special Prices

Large bulbs, your selection of color, our selection of names, thus enabling us to use "left overs" at lower prices. 18c each; \$1.80 per doz.; \$12.50 per 100. Specify colors when ordering.

Bedding Hyacinths

Fifteen to 16 centimeter bulbs for bedding purposes, in Red, White, Pink, Blue, and Yellow. These bulbs are grown in quantity, especially for garden use rather than for potting. Your selection of color, \$1.25 per doz.; \$8.00 per 100.

The Rain King

This is strikingly different from any other Sprinkler ever made. A wonderful combination: Circular or stationary spray; circular or fine, fast or slow, large or small lawn, trees, shrubs, flower beds—takes care of them all. Price, \$3.50.



Feed Your Lawn, Flowers and Plants

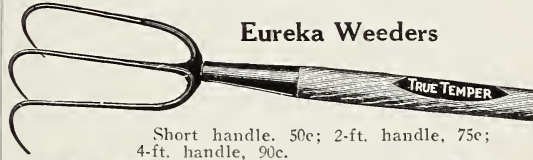


100-lb. bag\$5.00
 50-lb. bag 3.00
 25-lb. bag 1.75
 5-lb. pkg.50
 Not prepaid.

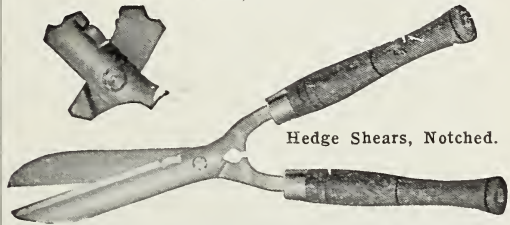
WYATT'S GARDEN TOOLS

Send for Complete List

Eureka Weeders



Short handle, 50c; 2-ft. handle, 75c; 4-ft. handle, 90c.



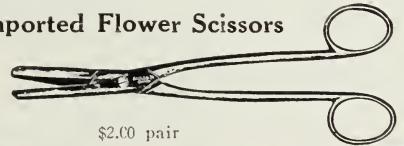
Hedge Shears, Notched.

6 inch, \$1.50; 8-inch, \$2.25; 9-inch, \$2.50; 10-inch, \$2.75.

SERRATED EDGE SHEARS. 6-inch, \$2.00; 8-inch, \$2.30; 9-inch, \$2.60.

TRIMSNIP HEDGE SHEARS. 6-inch, \$2.20; 8-inch \$2.60; 9-inch, \$3.00.

Imported Flower Scissors



\$2.00 pair



Wiss Hedge Shears

These shears are made to meet the demand for a better balanced, easier cutting, and more durable hedge clipper.

Size.....6 1/4 7 1/4 8 9 10
 Price, each\$2.75 \$3.00 \$3.25 \$3.50 \$4.00



Heavy Garden Mattock, \$1.50

True Temper Speedy Cultivator, \$1.25



Books for Better Gardens

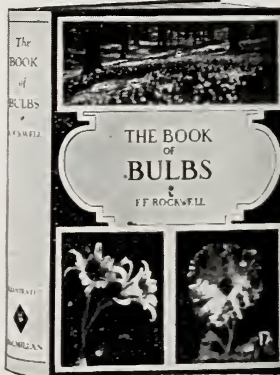
AMATEUR'S BOOK OF THE GARDEN SERIES.

- Per volume \$2.00.
- Flower Growing.** Revised and adapted from I. M. Bennett "The Flower Garden" by Leonard Barron.
- House Plants.** By Parker T. Barnes.
- Lawn-Making.** By Leonard Barron.
- Planting Your Garden.** By W. S. Rogers.
- How to Grow Roses.** Pyle-McFarland-Stevens.
- Vegetable Garden, The.** By Adolph Kruhm.
- THE PRUNING MANUAL** (Bailey). Principles and practices of pruning and training. \$2.50.
- THE PRACTICAL FLOWER GARDEN** (Helena R. Ely). Ill., 232 pp. \$2.50.
- TREES IN WINTER** (A. F. Blakeslee and C. D. Jarvis). Ill., 446 pp. \$2.50.
- VEGETABLE GARDENING** (Watts). An authentic book covering every phase of the subject. \$2.50.
- A SIMPLE GUIDE TO ROCK-GARDENING** (by Sir J. L. Cotter). Tells briefly how to build rock, wall, and bog gardens. 126 pp. \$1.00.
- AROUND THE YEAR IN THE GARDEN** (by F. F. Rockwell). Gives seasonable directions for caring for the garden each week. Ill., 350 pp. \$2.50.
- CONTINUOUS BLOOM IN AMERICA** (Stelton). Solves the problem of how to keep a garden in flower from early spring to late autumn. \$3.50.
- CULTIVATED EVERGREENS** (L. H. Bailey). A practical aid to the nurseryman, forester, farmer, and property owner in cultivation and management of evergreens. Ill., 434 pp. \$3.00.
- CYCLOPEDIA OF HORTICULTURE** (Bailey). A monumental work covering every phase of horticulture in a thorough manner. New edition in 3 volumes, per set \$25.00.

- CULTIVATED EVERGREENS** (L. H. Bailey). A practical aid to the nurseryman, forester, farmer, and property owner in cultivation and management of evergreens. Ill., 434 pp. \$3.00.
- EVERGREENS FOR THE SMALL PLACE** (by F. F. Rockwell). All the information you need to make the best use of evergreens. 84 pages. \$1.00.
- FERTILIZERS** (Voorhees). The source, character and composition of natural home-made and manufactured fertilizers and how to use them. \$2.50.
- FLOWER GARDEN, THE PRACTICAL** (Mrs. Ely). Illustrated, new edition, just issued. \$2.50.
- FRUIT GROWING, PRINCIPLES OF** (Bailey). Revised new edition. \$2.50.

GARDEN GUIDE (Amateur Gardener's Handbook). Tells how to plan, plant and maintain the home grounds, how to grow vegetables, fruits, flowers, etc. \$1.

THE BOOK OF BULBS, by F. F. Rockwell. Pictures and text take you into the garden and show the almost limitless possibilities that bulbs offer. Complete information on growing and propagation. Ill., 272 pp. \$3.00.



- ONE THOUSAND AND ONE GARDEN QUESTIONS ANSWERED** (Prof. A. C. Hottes). A book of 320 pages, copiously illustrated. \$2.00.
- ROCK GARDEN AND ALPINE PLANTS.** 33 illustrations. 560 pages. \$6.00.
- ROCK GARDENS.** By Rockwell. \$1.00.

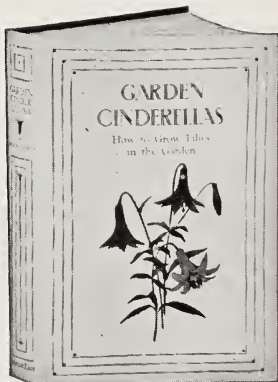
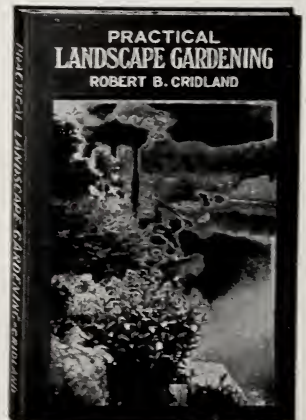
PRACTICAL LANDSCAPE GARDENING (Cridland). Of particular value to the owner of the moderate-sized suburban home, nicely illustrated. \$2.50.

PERENNIALS, LITTLE BOOK OF (Hottes). Devoted to the general principles of growing, using and propagating old-fashioned hardy perennial plants \$1.50.

THE DESIGN OF SMALL PROPERTIES.

(M. E. Bottomley). 265 pp. \$3.

TURF FOR GOLF COURSES (By Piper and Oakley). Care Fertilizers, Turf Grass, Soils, etc. Illustrated; 262 pp. \$2.60.



GARDEN CINDERELLAS—How to Grow Lilies in the Garden (by Helen M. Fox). 269 pp.; 4 color plates, 29 half tones, 18 line drawings; 6 x 8 3/4 in.; cloth. \$5.00.

HOME FLOWER-GROWING (by E. C. Volz). This book is a real flower garden encyclopedia! 364 pp., 151 illustrations. \$3.50.

LAW FOR THE HOME OWNER (J. B. Green). All the pitfalls that await the unwary

purchaser of property and builder of homes can be avoided. 418 pp. \$2.50.

LAWNS BY ROCKWELL. \$1.00.

LANDSCAPING THE HOME GROUNDS. By L. W. Ramsey. \$2.00.

MANUAL OF VEGETABLE GARDEN DISEASES (by Chupp). 391 pp.; \$3.00, postpaid \$3.25.

MANUAL OF GARDENING (Bailey). A guide to the making of home grounds, the growing of flowers, fruits and vegetables. \$3.00.

MANUAL OF TREE AND SHRUB INSECTS (E. P. Felt). Ill., 382 pp. \$3.50.

MANUAL OF TREE DISEASES (W. H. Rankin). Ill., 398 pp. \$3.25.

Nursery Stock Department

Prices quoted are for strong, field-grown plants from nursery, or you may call at our store and we will have the plants at the proper time.

APPLES. Early Harvest, Grimes Golden, Horse, Delicious, Winesap, York Imperial. Also other varieties. Strong trees, 75c each; \$6.50 per 10.

PEACHES. Elberta, Belle of Georgia, etc. Strong trees, 50c each; \$4.50 per doz.

PEARS. Kieffer, Pineapple, etc. Strong trees, \$1.00 each; \$8.50 per 10.

CHERRIES. Early Richmond, etc. \$1.25 each.

APRICOTS. \$1.25 each.

FIGS. 75c each; \$6.75 per 10. Large plants, each \$1.50.

GRAPES (Bunch). Concord, etc. 35c each; \$3.00 per 10.

GRAPES. Scuppernon and James. 75c each; \$6.00 per 10.

JAPANESE PERSIMMONS. \$1.25 each.

PLUMS. Abundance, etc. \$1.00 each.

CURRENTS. 35c each.

GOOSEBERRIES. 35c each.

BLACKBERRIES. \$1.50 per doz

DEWBERRIES. \$1.50 per doz.

RASPBERRIES. \$1.20 per doz.

Ornamental Evergreens

ARBORVITAE (American). This species is very hardy. 12-18 in. \$1.50; 2-3 ft. \$2.50 each.

ARBORVITAE (Dwarf Golden). 12-18 in., \$1.75 each.

CHINESE PYRAMIDAL ARBORVITAE (Biota Orientalis Pyramidalis). This variety is compact, upright, pyramidal in form, green and very desirable. 12 in. \$1.50 each; 18 in. \$2.00 each; 2 ft. \$2.50; 2½ ft. \$3.00.

DOUGLAS SPRUCE. A rapid grower; foliage somewhat resembles Hemlock; leaves a bright green above, glaucous below. Conical form, branches spreading; light and graceful. 12 in. \$1.50 each; 24 in. \$3.00 each; 30 in. \$3.50 each; 36 in. \$4.00 each.

Hedge Plants

PRIVET (Amoor River). The evergreen Privet. 8-12 in. \$6.00 per 100; 18-24 in. \$8.00 per 100.

PRIVET (California). 8-12 in. 6.00 per 100; 18-24 in. \$8.00 per 100.



Pyramidal
Arborvitae.

SPECIAL—Eight Popular Shrubs That Bloom All Summer

Forsythia Fortunei, Deutzia, Spirea Van Houttei, Syringa Mock Orange, Honeysuckle Red Tartarian, Weigela Rosca, Spirea Anthony Waterer, Hydrangea P. G.
**ABOVE COLLECTION OF EIGHT
 FLOWERING SHRUBS, \$4.50.**

Lawn and Garden Supplies

While we do not have room in this Catalogue to mention the many useful and necessary articles and supplies you need, yet we have them in stock—Lawn Rakes, Lawn Sprinklers, Hedge Shears, Edgers, Lawn Mowers, (Hand and Power), Rollers, Raffia, Grafting Tools and Wax, Hose, Tree Pruners and Saws, Wheelbarrows, Ladders, Trowels, Dibbles, Plant Labels, and many other articles.



Norway Maple.

CREPE MYRTLE. Pink, red, white. 75c, \$1.00, \$1.25 each.

FORSYTHIA (Golden Bell). 50c each; \$4.50 per 10.

HYDRANGEA PANICULATA GRANDIFLORA. 75c each.

JAPAN QUINCE. Among our choicest shrubs. Produces large brilliant scarlet flowers. Among the first to bloom. Nice plants 60c each.

LILAC. Purple white. 60c each; \$5.50 per 10.

SALVIA Greggii. Hardy everblooming shrub, which is a mass of red flowers the greater part of the season. Highly recommended for the shrub border. 2-year, 75c each, \$6.50 for 10.

SPIREA Van Houttei. 50c each; \$4.50 per 10.

SPIREA Thunbergii. 60c each; \$5.50 per 10.

SPIREA, Bumalda, Anthony Waterer. Free-flowering. Crimson blooms in dense corymbs, from June to frost if kept growing and old heads clipped. 75c each, \$6.50 per 10.

SPIREA, Callosa Alba. White flowers in dense corymbs. June to September. 60c each, \$5.00 per 10.

WEIGELA. White, pink, red. 75c each.

CORNUS Florida Rubra. (Red-Flowering Dogwood). Flowers bright pink. 2-3 ft., each \$3.00; 3-4 ft., each \$4.00.

Shade Trees

MAPLES, O A K S, LINDENS, etc. 4-5 ft. \$2.00; 6-8 ft. \$2.50; 8-10 ft. \$3.50.

Deciduous Shrubs

ALTHEA (Rose of Sharon). 50c each.

BARBERRY (Japanese). 40c each; \$3.00 per 10.

BUTTERFLY BUSH. 50c ea.; \$4.50 per 10.

CALYCANTHUS (Sweet Shrub). 50c each.

CORALBERRY. 50c each; \$4.00 per 10



Hydrangea Paniculata
Grandiflora.

Broad-Leaf Evergreens

ABELIA GRANDIFLORA. One of the most beautiful and satisfactory plants for landscape planting. 12-18 in. \$1.00; 2 ft. \$1.50 each.

AZALEA HINODEGIRI. A bright scarlet form of the well-known and charming Azalea Amoena. 6-8 in. bushy, \$1.75 each; 8-10 in. bushy. \$2.25 each.

BOXWOOD (Tree or Dwarf). 4-6 in. 35c each; 6-8 in. 50c each; 8-10 in. 75c each. Special prices on larger sizes.

MAGNOLIA GRANDIFLORA. \$2.50 each.

LIGUSTRUM JAPONICUM (Japanese Privet). A beautiful broad-leaved evergreen shrub of dense and symmetrical outline. Grows 10 to 15 ft. tall. 2-3 ft., each \$1.50; \$13.50 per 10; 3-4 ft., each \$2.00; 18-50, per 10. 4-5 ft., each \$3.50; \$32.50 per 10.

LIGUSTRUM LUCIDUM. Large, thick, dark, shiny green leaves. 12-18 in., each \$1.75; \$15.00 per 10. 18-24 in., each \$2.50; \$22.50 per 10. 2 to 2½ ft., each \$3.50; \$32.50 per 10.

PYRACANTHA COCCINEA (Crataegus Pyracantha). Fiery Thorn. 12-18 in. \$1.50; 2 ft. \$2.50.

Wyatt's Selected Irises

A PERENNIAL SUITED
TO ALL GARDENS



Lord of June and Lent A. Williamson.

Flag Iris or Fleur de Lis IRIS GERMANICA

The Iris is one of the finest, if not the finest, of our hardy plants. Not particular as to soil or location, but asking only that the sun shine on it, it throws up spikes of bloom that are marvelous in their delicacy of structure and the colorings which are exquisitely dainty and wonderful in their blendings and variety. Give Irises plenty of lime.

They are very effective planted in groups, and if used for borders are particularly desirable in that the foliage remains fresh and upright after the blossom stalks are removed.

Do not cover the rhizomes (roots) too deeply.

S mean standards or upper petals; F means falls or lower petals.

ALCAZAR. S. Light violet shaded deeper. F. Dark pansy violet. Largest and finest. 40c each, \$3.00 dozen.

ARCHEVEQUE. S. Purple violet. F. Deep purple violet, large deep color. 35c each, \$3.00 dozen.

BALARUC (Denis). S. and F. Cream white with red-purple markings at base; orange beard. Each \$1.00.

BLUE JAY. S. Bright, clear blue. F. Intense, dark blue. Tall; late. 35c each, 3 or more 30c ea.

BELCOLOR. Creamy yellowish white veined gold 60c each.

CAPRICE. Rosy red.

CELESTE. Azure blue, slightly deeper falls; mid-season; 30 ins.

COLONEL CANDELLOT (Millet). S. bronze, overlaid with red-lavender; F. rich velvety crimson-purple, reticulated white at the base. 40c each.

'RIMSON KING. Rich claret purple; 24 in.

DAWN. A light sulphur-yellow bronze veined at the throat Beard orange. Early. 27 in. 35c each, \$3.00 per doz.

'ATMARIUS. Smoky violet.

DOROTHEA (Caparne). White and lilac. Wonderful flowers. Height, 15 to 18 ins. Each 35c.

ELDORADO. S. Bronze yellow. F. Raisin purple bronzed. Unusual. 35c each, \$2.50 dozen.

FAIRY. S. Opalescent white with blue. F. clear blue; very dainty. 30c each, 6 for \$1.25.

GRACCHUS. S. White. F. Crimson; late.

HELGE. Pale lemon yellow, early, sweet scented.

HIAWATHA. Lavender and purple; tall.

INGEBORG. Pure white; very large flowers of handsome form. 20c each, \$2.00 dozen, \$10.00 per 100.

INNOCENZA. White.

IRIS KING. S. Old gold. F. Velvety garnet brown, orange beard. 35c each, \$2.50 dozen.

JEANNE D'ARC. S. Ruffled white edged blue. F. Bright lilac. Beautiful.

JUNIATA (Farr). S. and F. clear blue, deeper than Pallida Dalmatica. Large fragrant flowers; tall vigorous grower. Each 35c, \$2.50 dozen.

KEDIVE. Soft violet showy orange beard.

LADY BYNG (Bliss). Clear pale lavender with a slight suffusion of rose. A good, late blooming Iris. Height 36 ins. Each 75c.

LORD OF JUNE (Yeld). S. light lavender-blue; F. deep lavender-blue reticulated brown at base. Very tall plants with very large blooms. Each 50c, \$4.00 dozen.

LENT A. WILLIAMSON. Lavender violet to deep purple all suffused with yellow. Immense flowers, tall vigorous grower. 50c each, \$4.00 dozen.

MARGARET MOOR. Rose to red lilac. 35c each.

L'AVENIR. Satin blue.

MADAM CHEREAU. White, edged blue.

MARY GARDEN. Variegated, pale yellow flushed lavender. 75c each.

MRS. ALAN GRAY. S. Light phlox rose purple. F. Phlox purple, beard white tipped yellow. Each 35c, \$3.00 dozen.

MIDNIGHT. Very dark, deep purple.

MONSIGNOR. Rich violet. 35c each, \$3.00 dozen.

MRS. H. DARWIN. White, veined purple.

OLIVER PERTHUIS (Millet). Tall bloom stalks of lavender blue, suffused mauve, with purple violet and white throat. Beautiful. \$1.00 each, \$7.20 doz.

PALLIDA DALMATICA. (Cultivated before 1600.) S. Pale violet. F. Lighter violet. Large, general favorite. 35c each, \$2.50 dozen, \$18.00 per 100.

PARISIANNA. S. Purple violet, spotted white. F. White, spotted purple, effect of polka dots. Unusual. 35c each, \$3.50 dozen.

PALLIDA SPECIOSA. Large; purple; tall. 35c each.

POCAHONTAS (Farr) S. and F. pure white, bordered pale violet. Midseason.

Price all varieties except where noted: 20c each, \$1.90 per dozen, \$12.50 per 100. Blooming size Rhizomes.

Various Iris

ENGLISH IRIS. \$2.40 per dozen.

SPANISH IRIS. \$1.50 per dozen.

DUTCH IRIS. \$2.40 per dozen.

Formalin or Formaldehyde.

Disinfectant
for Grain, etc.

1 lb. 50c, 10 lbs. \$4.75.

Special Offer

12 Monthly Blooming Roses or 12 Climbing Roses.
All different, our selection, for.....\$6.00



Ambassadeur Iris.

AMBASSADEUR. 40 ins. S. Smoky bronze. F. Dark velvety maroon. A strong grower, carrying its large flowers well disposed on its stalks; petals of great substance. Each 75c, 3 for \$1.35.

WYOMISSING. S. Whitish pink. F. Pink lavender, veined red brown. 30c each, \$2.40 doz.

YUONNE PELLITIER. Lavender blue shaded darker, tall. 50c each, \$4.00 dozen.

ZWANENBURG. Early, large flower. Greenish yellow, Striped maroon, an exquisite flower. 50c each, \$4.00 dozen.

ZUA. Lavender blue, highly ruffled. 50c each, \$4.00 dozen.

ZOUAVE. Light lilac to white veined and dotted violet. 50c each, \$4.00 dozen.

MOTHER OF PEARL (Sturtevant). S. and F. pale bluish-lavender, with a faint creamy undertone. Large flowers of perfect form and exceptional substance. The creamy undertone of this exceptional substance often assumes the luster and iridescence which we see in the beautiful lining of sea shells which produce Mother of Pearl. 50c each, \$3.50 doz.

IRIS FILIFOLIA (Early Iris)

DAVID TENIERS. Porcelain-blue; falls yellow. \$2.00 doz., \$10.00 per 100.

HART NIBBRIG. Brilliant clear blue. \$1.50 doz., \$7.50 per 100.

IMPERATOR. Blue. \$1.50 doz., \$7.50 per 100.

JAPANESE IRIS

GOLD BOUND. Double, Pure white. One of the best. 35c each, \$3.50 doz.

INDO—Sgl.—Broad wavy petals of great size, color dark rich blue, only slightly veined. The yellow central blotch is unusually bright. \$2.00 doz, \$15.00 per 100.

LA FAVORITE—Dbl.—White freely veined blue with a rich purple center. \$3.50 doz, \$25.00 per 100.

MOUNT HOOD—Dbl.—Light blue shaded darker, bright orange center. \$2.00 doz, \$15.00 per 100.

PYRAMID—Dbl.—Violet purple veined white in center of each petal. \$1.75 doz, \$12.50 per 100.

IRIS, JAPANESE. Purple, lavender, blue, and mixed. \$1.80 doz., \$11.00 per 100.

SIBERIAN IRIS

PERRY'S BLUE. Large, well formed flowers of a wonderful shade of skyblue. Each 60c, 3 for \$1.25.

PURPLE. The deep rich purple flowers contrast sharply with the bright green foliage. 15c each; 3 for 40c, 6 for 75c, 12 for \$1.40, 50 for \$5.00.

SNOW QUEEN. Snow-white flowers borne in clusters of from 5 to 8 blooms on slender stems. 25c each, 3 for 70c, 6 for \$1.35, 12 for \$2.50, 50 for \$9.00.

GERMAN IRISES—Continued

PROF. SEILIGER. A fine bordeaux wine red, Free blooming. 50c ea., \$3.00 doz.

PURPLE KING. Purple. 25c each, \$2.40 doz.

QUEEN OF MAY. Rose. 50c each, \$4.00 doz.

QUEEN ALEXANDER. Fawn to lilac to bronze, large ruffled. 25c each, 60c for 3, \$2.00 doz.

RUBY QUEEN. Distinct ruby toned flower. 50c each, 3 for \$1.25.

RHEIN NIXE. White to violet bordered bluish white. 35c each, \$2.50 doz.

RUGAJO. Brilliant red toned variety. 75c each, 6 for \$3.50.

ROTURUA. Light blue tone, good for large plantings. 40c each, \$4.00 doz.

TITUS. Early, bright pink toned variety. \$1.00 each, 3 for \$2.50.

TOM TIT. Small, deep blue, for ground planting. 50c each, \$4.00 dozen.

WESTERN DREAM. Large lavender, blue bicolor. \$1.00 each, 6 for \$4.00.

WALHALLA. Standards light bluish lavender, falls violet purple. 30c each, \$2.40 doz.



May Allison (Double Iris).

May Allison (1920). Cool azure blue, floriferous, six standards and three falls double Germanica. (only one in existence). A wonderful flower. Limited number. \$3.00 each, prepaid.

PECANS SCHLEY.

There is no better nut grown than the Schley Pecan. It is a good cropper and invariably brings high prices. Shell thin.

STUART.

Nut large; 1 3/4 to 2 1/8 inches long; thin shell, very good quality, heavy bearer.

SUCCESS.

Size large shell moderately thin; kernel usually plump; rich flavor.



Schley.

Prices All Varieties.

	Each.	10.	100.
3 to 4 feet.....	1.25	1.15	1.00
4 to 5 feet.....	1.50	1.35	1.25
5 to 6 feet.....	1.75	1.60	1.40
6 to 7 feet.....	2.35	2.20	2.00



Wyatt's Special Pruning Shears,
\$1.50 per pair.

Wyatt's Fragrant Peonies, Aristocrat of Flowers

Planted This Fall Will Bloom Next Spring

The gorgeous flowers which rival the finest roses in size, form and color, are produced in great abundance. Avoid planting too deeply, 2 or 3 inches over the crown is sufficient.

Postage on Peony Roots, 10c each, or 40c per dozen.

ALEXANDRE DUMAS. Light violet-rose; creamy white collar of narrow petals. 65c each, \$6.50 dozen.

COURONNE D'OR. Pure white; tuft of center petals tipped carmine. 65c each, \$6.50 per doz.

DUCHESSE DE NEMOURS. White crown; sulphur-white collar. 75c each, \$7.50 per doz.

DOUBLE UN-NAMED PEONIES. White, red, or pink. Each 50c, \$4.80 per doz.

DUC DE CAZES. Dark pink, center salmon rose. 60c each, \$6.00 dozen.

EDULIS SUPERBA. One of the earliest. Color is a bright clear mauve-pink, with silvery reflex. Flowers large and fragrant. Each 50c, \$5.00 doz.

FELIX CROUSSE. Large, globular, typical bomb type. Brilliant red. 75c each, \$7.50 per doz.

FESTIVA MAXIMA. Large globular type; pure white, center prominently flecked crimson. Popular variety for cut flowers. 60c each, \$6.00 per doz.

GRANDIFLORA RUBRA. Rosy red; immense flat, rose type; very fragrant. 75c each.

JEANNE D'ARC. Lilac rose, collar cream white, center yellow. 60c each, \$6.00 per doz.

LA TULIPE. Blush white, red markings, fragrant. 65c each, \$6.50 per doz.

MME. CALOT. Pale hydrangea-pink; center shading darker; collar tinged silver. \$1.00 each, \$10.00 per doz.



Edulis Superba.



Festiva Maxima Peonies.

PEONY COLLECTION

One each, red, white and pink, \$1.35 delivered.

MME DE VERNEVILLE. Blush when opening, fading pure white; prominent carmine specks. 75c each, \$7.50 per doz.

MARECHAL VALLIANT. Immense flowers, dark mauve pink, very tall, late. 75c each, \$7.50 per dozen.

MONS. JULES ELIE. (Crousse 1888.) Very large; pale lilac-rose, collar lighter shaded amber-yellow at the base. Strong growth. Early. Extra. 90c each, \$8.75 per dozen.

OFFICINALIS RUBRA. Red. A large, round bloom of vivid crimson. This is the old deep bright red peony of the old-time garden. Earliest of all good peonies. \$1.00 each.

RICHARD CARVEL. New, rare, deep crimson, \$4.50 each.

Send us list of other varieties wanted. We can fill your order at market prices.

Use Soiltex for testing soil—it tells you amount of lime to apply. \$1.00 pkg., prepaid.

Wyatt's Hardy Field-Grown Everblooming Roses



Pink Radiance.

PINK ROSES

- JONKEER J. L. MOCK.** Deep carmine pink shaded to silver white, strong.
- KILLARNEY.** An exquisite shade of carmine-pink; large in bud and flower and very fragrant. A great favorite wherever grown.
- MRS. ARTHUR ROBERT WADDELL.** HT. Long reddish copper buds of finest shape. The open flowers are coppery gold, but change to soft pink as the flower ages. \$1.00 each.
- MRS. CHAS. BELL.** HT. A sport of the well-known Radiance; similar to it in habit and foliage, but a light shell pink in color.
- OPHELIA.** HT. Flesh pink; blooms large and of perfect shape; flowers produced on long stems.

Prices, all varieties: Strong, 2-year-old plants \$1.00 each, \$9.00 per dozen. Specimen plants \$1.75 each, Smaller plants 75c each, \$7.50 dozen.

Climbing Roses

- Prices, all Climbing Roses: \$1.00 each, 6 for \$4.50, 12 for \$9.00. (Extra size plants, \$1.75 to \$5.00.)
- CLIMBING LADY ASHTOWN.** CHT. Soft rose colored, large blooms; one of the most free-flowering of all climbing roses, producing a steady succession of blooms from June until frost.
- CLIMBING KILLARNEY.** CHT. (Reinberg, 1908.) Sparkling buds of delightful form and large, attractive, widespread flowers of clear, light pink.
- CLIMBING SUNBURST.** CHT. A climbing sport of the yellow rose; strong grower and free bloomer; very large flowers, beautiful either in bud or flower.
- CHRISTINE WRIGHT.** HW. Wildrose pink, strong climbing plant which produces occasional flowers in summer and fall.
- MARY LOVETT.** Waxy white.
- MARY WALLACE.** Bright pink.
- MARECHAL NIEL.** CN. Golden yellow flowers exhaling the most exquisite Tea fragrance. This is the old standby of the South; flowers large.

- PINK MAMAN COCHET.** Soft pink, general favorite.
- PAUL NEYRON.** Clear pink shaded rose. Largest of blooms.
- PINK RADIANCE.** Silver pink outside, deep rose inside.

White Bush Roses

- FRAU KARL DRUSCHKI.** The largest White American Beauty.
- K. A. VICTORIA.** Creamy white shaded to primrose.
- WHITE KILLARNEY.** HT. Pure snow white in color; b'ooms of perfect form; very free-flowering.
- WHITE MAMAN COCHET.** Creamy white flowers faintly tinged with blush.

Yellow Roses

- GOLDEN OPHELIA.** Golden yellow shading light.
- HUCONIS.** (Species.) The Golden Rose of China.
- IRISH FIREFLAME.** Single rose of old gold splashed crimson.
- LADY HILLINGDON.** Apricot yellow.
- SUNBURST.** Cadmium yellow, beautiful both bud and flower.
- TALISMAN.** Beautiful blending of vivid pink, orange and gold; \$2.50 each.

Red Roses

- ETOILE DE FRANCE.** Lighter crimson, long pointed buds.
- HADLEY.** Bright red, strong.
- MAGNA CHARTER.** HP. Bright rose.
- RED RADIANCE.** Deep red, strong beautiful buds.
- RED-LETTER DAY.** HT. Fiery scarlet; single.

Polyantha Roses

- CATHERINE ZEIMET.** P. Double white flowers throughout the entire season.
- CECILE BRUNNER.** (H. Pol.) This is the popular Baby Pink or "Sweetheart" rose. Color blush, shaded light salmon-pink; distinct and desirable.
- PERLE D'OR.** P. Yellow, orange center, very double and exquisitely perfumed.
- MME. NORBERT LEVAVASSEUR.** DP. The first red Baby Rambler, rosy crimson flowers.

THE ROSE IN AMERICA, by J. Horace McFarland. A complete guide to successful growing, based on Mr. McFarland's own experience and the exchange of ideas with other enthusiasts while acting as editor for the American Rose Society. Contains the newest information on cultivation, pest control, and varieties. 66 illustrations, 233 pages. \$3.00.

- PAUL'S SCARLET CLIMBER.** HW. Blooms vivid scarlet shaded crimson. One of the most brilliant and satisfactory of all the climbing roses; vigorous habit; wonderful foliage; blooms persist a long time.
- SILVER MOON.** Creamy white.
- TAUSENDSCHON OR THOUSAND BEAUTIES.** CP. The flowers upon first opening are the most delicate shade of pink ever seen in a rose, being white, delicately flushed pink.
- DR. W. VAN FLEET.** A Rose which, on account of its dainty color and exquisitely shaped buds and flowers, has become a great favorite. The long, pointed buds are of a rich flesh-pink on stems 12 to 18 inches long. One of the very best of the climbing Roses. Splendid for cutting.

ROSE SPECIAL

Our selection, 12 Bush or Climbing Roses
 Prepaid\$6.00

Wyatt's Tested Clover and Alfalfa Seed



Crimson Clover.

CRIMSON CLOVER

(*Trifolium incarnatum*)

An annual variety providing large crops of green forage, or, if cut while in bloom, will make excellent hay. Seed should be sown in August, September, October and November; 20 to 30 pounds per acre broadcast. Lb. 25c, 3 lbs. 60c, prepaid. Not prepaid, 10 lbs. or more at 15c per lb., \$7.50 per bu.

VETCHES

Sand, Hairy or Winter.

Sow from July to December, preferably in spring or fall. 25 lbs. will hold the Vetch off the ground. Sow 25 lbs. to the acre with grain. Lb. 20c, 10 lbs. \$1.60, 50 lbs. \$7.50, 100 lbs. \$14.00, 220 lbs. at 12½c per lb.

Oregon or Spring.

May be sown either in spring or fall. 25 lbs. to the acre with 2 bushels of oats or 1 bus. barley, which will make excellent early hay. Lb. 20c, prepaid. Not prepaid, lb. 12½c, 100 lbs. \$10.00, 500 lbs. at 9c per lb.

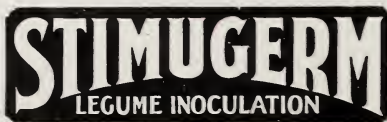
Austrian Winter Peas.

Grows 2½ to 3 feet high; very hardy; has yielded seven tons (green weight) per acre. Recommended for fall sowing. By mail postpaid. lb. 20c, 5 lbs. 85c, 10 lbs. \$1.60, 25 lbs. \$3.75, 50 lbs. \$6.50.

Not prepaid, lb. 15½c, 10 to 25 lbs. 14c per lb., 25 to 50 lbs. 13c per lb., 50 lbs. and over 11c per lb. No charge for bags.

The best inoculation for all legume seeds. Means better crops, better soil, less fertilizer expense.

For Alfalfa, Clover, Beans, Peas, Vetch, etc.



When ordering be sure to specify crop and amount of seed you wish to inoculate—Jelly Type or Humus Culture

PRICES ARE LOW. For small seeds—Clovers, Sweet

Clovers, Alfalfa, etc.:			
½-bu. size	\$0.35	1 -bu. size	\$1.00
⅓-bu. size60	2½-bu. size	2.25
10-bu. size.....	\$8.00		

ALFALFA or LUCERNE

Alfalfa, or Lucerne, will produce from 5 to 7 tons of hay an acre each year in the South. Lime should be applied at the rate of 1,500 pounds to the acre. Inoculate seed before sowing if Alfalfa has never been grown on the soil you are to sow. 20 to 30 pounds per acre. Lb. 35c, 10 to 30 lbs. at 30c per lb., bu. (60 lbs.) \$17.40, sack lots at 28½c lb.

ALSIKE or HYBRID CLOVER

(*Trifolium hybridum*)

A long-lived perennial and very hardy, thriving equally well on wet or dry soils. Sow at the rate of 8 to 12 pounds to the acre. Lb. 45c, 3 lbs. \$1.20, prepaid. Not prepaid, 10 lbs. or more at 35c per lb., 100 lbs. \$27.00.

BURR CLOVER

Can only be sown in the summer and fall. For the South it is a most valuable winter grazing crop. Price, seed in the burr. Lb. 20c, 10 lbs. or more at 16c per lb. Recleaned Hulled Seed: Lb. 30c, 10 lbs. at 22c per lb.

RED CLOVER

(*Trifolium pratense*)

This is the common red or "old-fashioned" Clover so largely grown; 10 to 15 pounds per acre. Lb. 45c, 3 lbs. \$1.30, prepaid. Not prepaid, 10 lbs. or more at 35c per lb., \$27.50 per 100 lbs.

MAMMOTH or PEAVINE CLOVER

(*Trifolium pratense perenne*)

Also known as Sapling Clover. This grows much taller than Red medium, with large leafy stalks; 10 to 15 pounds of seed per acre. Lb. 45c, 3 lbs. \$1.35, prepaid. Not prepaid, 10 lbs. or more at 35c per lb., \$28.50 per 100 lbs.

WHITE DUTCH CLOVER

Is especially valuable and largely used in lawn and pasture mixtures. Lb. 50c, 5 to 10 lbs. at 45c per lb., \$37.50 per 100 lbs.

WHITE BLOSSOM SWEET CLOVER

(*Melilotus alba*)

Biennial. Also known as Bokhara Clover. Plants grow 4 feet during the first season and 6 to 12 feet the second year; 20 to 30 pounds per acre sown broadcast. Lb. 25c, 3 lbs. 70c, prepaid. Not prepaid, 10 lbs. or more at 20c per lb., \$14.00 per 100 lbs.

STIMUGERM is economical and easy to use. Full directions for use accompany each package. STIMUGERM is dated and guaranteed for a full year.

PRICES ON CULTURES. For large size seeds—

Soy Beans, Cowpeas, Beans, Vetches, etc.:			
½-bu. size	\$0.35	5-bu. size	2.25
2-bu. size	1.10	1-bu. size	\$0.60
Special Garden Size for Garden Peas, Beans and sweet peast, 25c.			