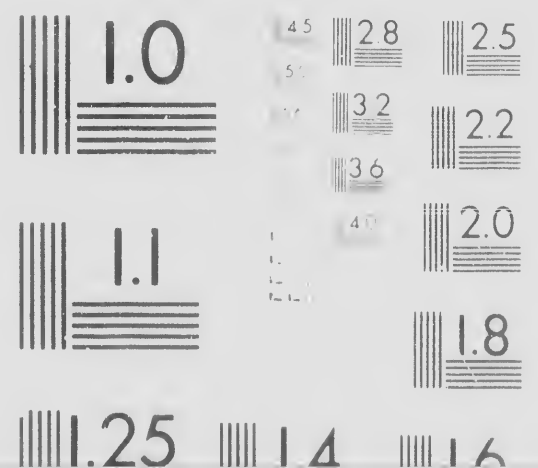
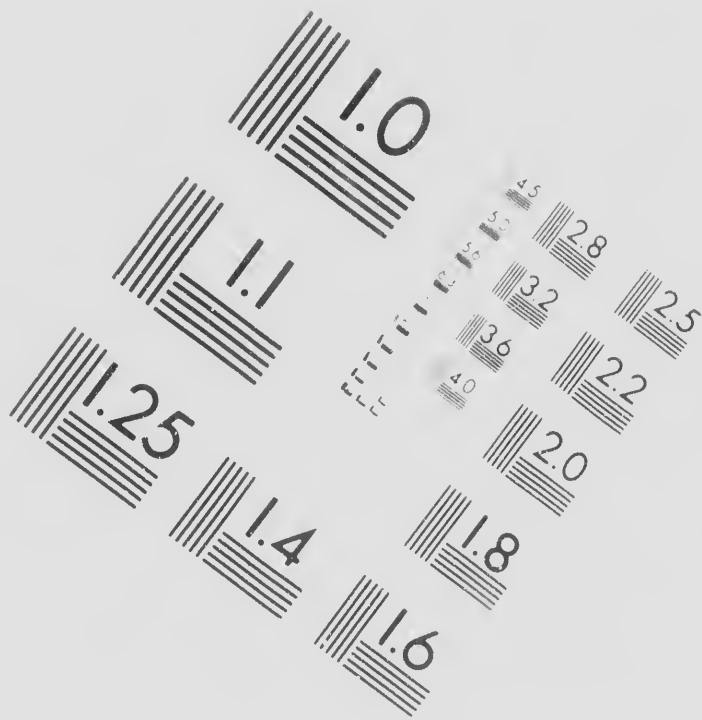


## IMAGE EVALUATION TEST TARGET (MT-3)





**CIHM/  
Microf  
Series.**

**ICMH**  
**che**

**CIHM/ICMH**  
**Collection de**  
**microfiches.**



-  
c  
c  
v  
r  
t

[

[

[

[

[

[

[

[

Technical and Bibliographic Notes/Notes techniques et bibliographiques

The Institute has attempted to obtain the best original copy available for filming. Features of this copy which may be bibliographically unique, which may alter any of the images in the reproduction, or which may significantly change the usual method of filming, are checked below.

- Coloured covers/  
Couverture de couleur
- Covers damaged/  
Couverture endommagée
- Covers restored and/or laminated/  
Couverture restaurée et/ou pelliculée
- Cover title missing/  
Le titre de couverture manque
- Coloured maps/  
Cartes géographiques en couleur
- Coloured ink (i.e. other than blue or black)/  
Encre de couleur (i.e. autre que bleue ou noire)
- Coloured plates and/or illustrations/  
Planches et/ou illustrations en couleur
- Bound with other material/  
Relié avec d'autres documents

L'Institut a microfilmé le meilleur qu'il lui a été possible de se procurer de cet exemplaire qui sont peut-être de ce point de vue bibliographique, qui peuvent être une image reproduite, ou qui peuvent nécessiter une modification dans la méthode normale de filmage, sont indiqués ci-dessous.

- Coloured pages/  
Pages de couleur
- Pages damaged/  
Pages endommagées
- Pages restored and/or laminated/  
Pages restaurées et/ou pelliculées
- Pages discoloured, stained or foxed/  
Pages décolorées, tachetées ou jaunies
- Pages detached/  
Pages détachées
- Showthrough/  
Transparence
- Quality of print varies/  
Qualité inégale de l'impression
- Includes supplementary material/  
Comprend du matériel supplémentaire

xemplaire  
er. Les détails  
e uniques du  
euvent modifier  
ent exiger une  
nale de filmage

**The copy filmed here has been reproduced thanks to the generosity of:**

**Library of Congress  
Photoduplication Service**

**The images appearing here are the best quality possible considering the condition and legibility of the original copy and in keeping with the filming contract specifications.**

ted/  
lées

**Original copies in printed paper covers are filmed beginning with the front cover and ending on the last page with a printed or illustrated impression, or the back cover when appropriate. All other original copies are filmed beginning on the first page with a printed or illustrated impression, and ending on the last page with a printed or illustrated impression.**

foxed/  
u piquées

ial/  
mentaire

**Maps, plates, charts, etc., may be filmed at different reduction ratios. Those too large to be entirely included in one exposure are filmed beginning in the upper left hand corner, left to right and top to bottom, as many frames as**

L'exemplaire filmé fut reproduit grâce à la  
générosité de:

Library of Congress  
Photoduplication Service

Les images suivantes ont été reproduites avec le  
plus grand soin, compte tenu de la condition et  
de la netteté de l'exemplaire filmé, et en  
conformité avec les conditions du contrat de  
filmage.

Les exemplaires originaux dont la couverture en  
papier est imprimée sont filmés en commençant  
par le premier plat et en terminant soit par la  
dernière page qui comporte une empreinte  
d'impression ou d'illustration, soit par le second  
plat, selon le cas. Tous les autres exemplaires  
originaux sont filmés en commençant par la  
première page qui comporte une empreinte  
d'impression ou d'illustration et en terminant par  
la dernière page qui comporte une telle  
empreinte.

Les cartes, planches, tableaux, etc., peuvent être  
filmés à des taux de réduction différents.

Lorsque le document est trop grand pour être  
reproduit en un seul cliché, il est filmé à partir  
de l'angle supérieur gauche, de gauche à droite,





Sir,

I informed you in my letter of the  
of shipments," particularly of flour and  
sufficient cause for detention of the vessel  
been added to the list. But he has given  
forcibly to that object. As it was the gr  
power of detention, he considers it his du  
the Embargo Laws. He recommends,  
for a place where they cannot be wanted  
no necessity at present, for the transport  
the Chesapeake and its waters, to another  
port whatever to ports in the Chesapeake  
port such articles. And in order to prev

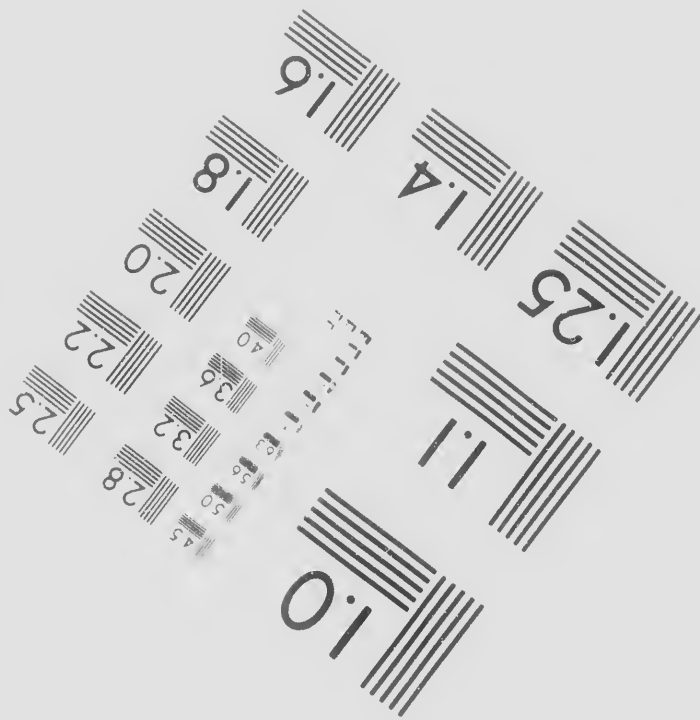
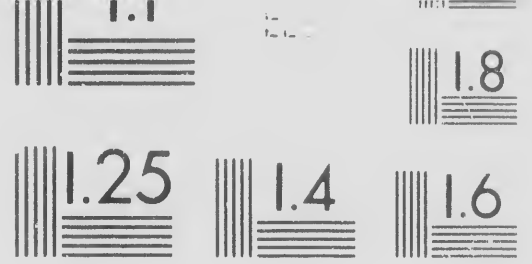
RCULAR.)

TREASURY DEPARTMENT,

MAY 6TH, 1808.

28th ultimo, that the President considered "unusu-  
other provisions, of lumber, and of naval stores, as  
; pot and pearl ashes and flax seed ought to have  
it in charge to me to call your attention still more  
at leading object of the legislature in giving the  
y in the execution of it to give complete effect to  
herefore, that every shipment of the above articles  
for consumption should be detained. He perceives  
ation of flour and similar articles, from one port of  
port on the waters of the same bay; or from any  
Delaware or Hudson, or to other places which ex-  
nt the inconveniencies which the want of a sufficient



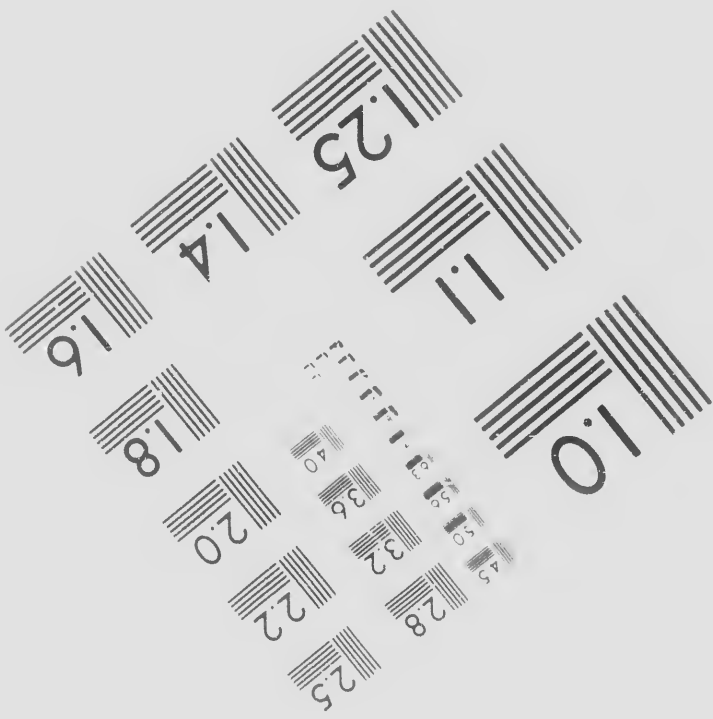


Photographic  
Sciences  
Corporation

23 WEST MA  
WEBSTER, N  
(716) 87



Canadian Institute for Historical



N STREET  
Y. 14580  
2-4503



Microreproductions / Institut canadien de microreproductions historiques

**1986**



TH  
C



- Planches et/ou illustrations en couleur  
 Bound with other material/  
 Relié avec d'autres documents
- Tight binding may cause shadows or distortion  
 along interior margin/  
 La reliure serrée peut causer de l'ombre ou de la  
 distorsion le long de la marge intérieure
- Blank leaves added during restoration may  
 appear within the text. Whenever possible, these  
 have been omitted from filming/  
 Il se peut que certaines pages blanches ajoutées  
 lors d'une restauration apparaissent dans le texte,  
 mais, lorsque cela était possible, ces pages n'ont  
 pas été filmées.
- Additional comments: / CIHM no. 60559  
 Commentaires supplémentaires:
- Quality of print varies/  
 Qualité inégale de l'impression
- Includes supplementary mate  
 Comprend du matériel supplé
- Only edition available/  
 Seule édition disponible
- Pages wholly or partially obsc  
 slips, tissues, etc., have been  
 ensure the best possible imag  
 Les pages totalement ou parti  
 obscurcies par un feuillet d'er  
 etc., ont été filmées à nouvea  
 obtenir la meilleure image pos

This item is filmed at the reduction ratio checked below/  
 Ce document est filmé au taux de réduction indiqué ci-dessous.

10X		12X	14X	16X	18X	20X	22X	24X	26X	28X									

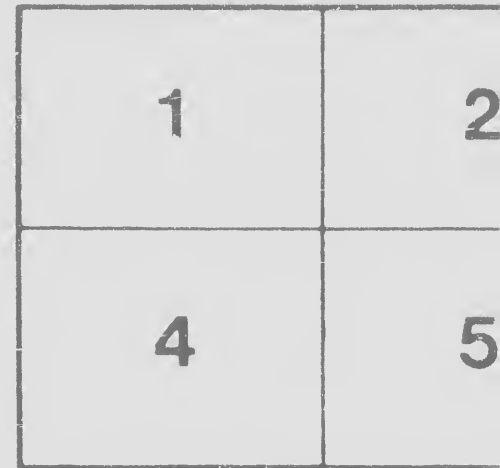
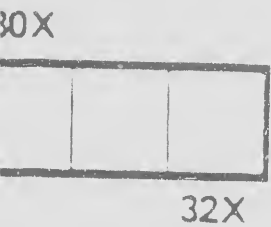
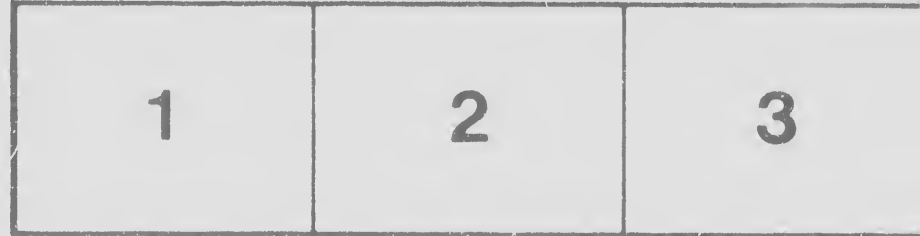
*(Note: The 12X and 14X boxes in the original image are crossed out with an 'X')*



al/  
netaire

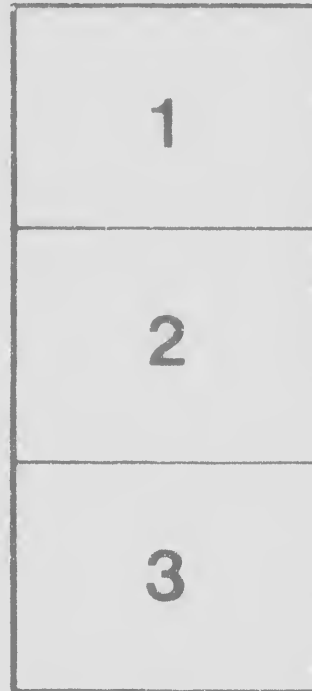
maps, plates, charts, etc., may be filmed at different reduction ratios. Those too large to be entirely included in one exposure are filmed beginning in the upper left hand corner, left to right and top to bottom, as many frames as required. The following diagrams illustrate the method:

ured by errata  
efilmed to  
/  
llement  
ata, une pelure,  
de facon à  
sible.



Les cartes, planches, tableaux, etc., peuvent être filmés à des taux de réduction différents.

Lorsque le document est trop grand pour être reproduit en un seul cliché, il est filmé à partir de l'angle supérieur gauche, de gauche à droite, et de haut en bas, en prenant le nombre d'images nécessaire. Les diagrammes suivants illustrent la méthode.





the Chesapeake and its waters, to another port whatever to ports in the Chesapeake port such articles. And in order to prevent supply might occasion in some states, he shire, Massachusetts, South-Carolina, G enclosed for your information.

In order that he may also be enabled instructions are carried into effect, you w a statement of the vessels laden with artic from the district during the week, shewi of destination. Vessels not masted or de bonds, and those employed in carrying f not be inserted in the statement.

The Collector of

or consumption should be detained. He perceives  
tion of flour and similar articles, from one port of  
port on the waters of the same bay; or from any  
Delaware or Hudson, or to other places which ex-  
ent the inconveniencies which the want of a sufficient  
has written a letter to the Governors of New-Hamp-  
orgia and Orleans, copy of which is, by his order,

d to judge of the manner in which the law and his  
ll be pleased to transmit weekly to this department,  
es of domestic produce, which shall have departed  
g the species and quantity of articles, and the port  
ked, packets and ferry-boats, vessels which give no  
ce wood, manure, stones and similar articles, need

I am, very respectfully,

Sir,

Your obedient servant,

