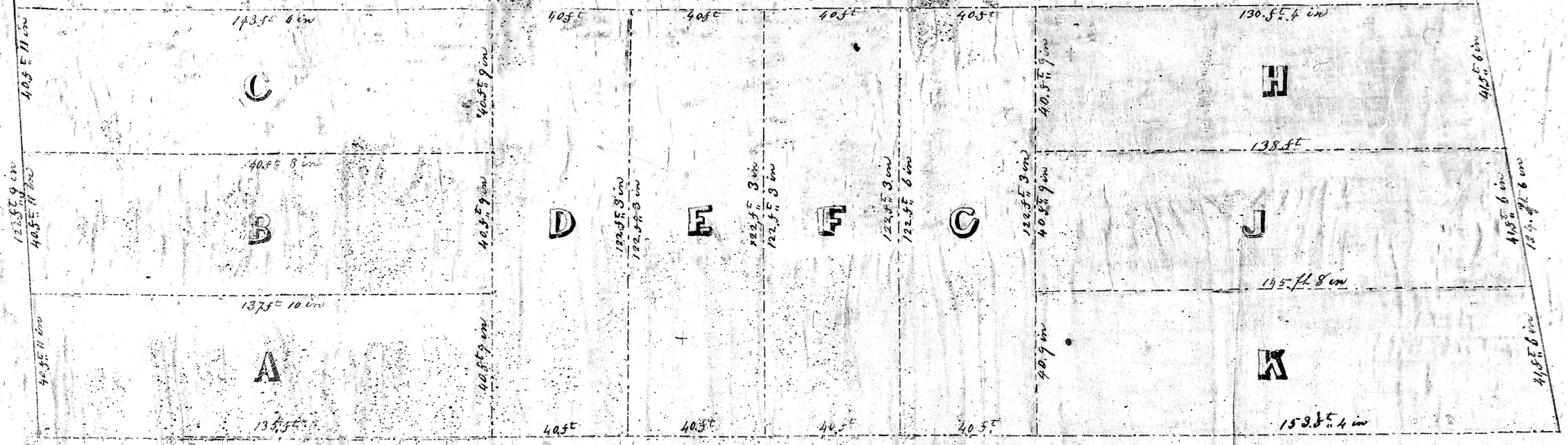


Mount Street 66 Feet wide.

B. L. Gadsden Esq^r



Long Hill Street 50 Feet wide.

Court private for the sole use of the Lots fronting on it 25 Feet wide

M^{rs} M. S. Bee.

PLAT

of a lot of Land situate in Ward No 8 City of Charleston
belonging to the Esh of M^{rs} E. S. Gadsden subdivided into
10 lots according to the directions of the Executors

Surveyed June, 1856 By

Scale 20 Feet per inch.

John A. Michell

C. S. S. Surveyor

Meine Conveyance Office
Charleston S.C. is to wit
I certify that the above
is a correct copy of a plat
lodged 15 March 1867

M. A. Bee